

Report By:

National TAB
1329 E. KEMPER ROAD
SUITE 4210
CINCINNATI, OH 45246



Report: TAB REPORT
Function: Test, Adjust, & Balance
Date: 09/23/2025
Completed By: National TAB

PROJECT

Namaste Market (Sunnyvale, CA)

415 Mary Avenue

Sunnyvale, CA 94085

Client

Martinico & Sons, Inc.

1776 S. 7th St.

San Jose, CA 95112

National TAB

Project: Namaste Market (Sunnyvale, CA)

Table Of Contents

Section	Page #
Certification	3
Equipment Calibrations	4
Abbreviations	5
GRD	6
AHU/RTU	7
FAN - Exhaust	18



CERTIFICATION

PROJECT: Namaste Market (Sunnyvale, CA)

The data presented in this report is a record of system measurements and final adjustments that have been obtained in accordance with the current edition of the NEBB *Procedural Standards for Testing, Adjusting, and Balancing of Environmental Systems*. Any variances from design quantities, which exceed NEBB tolerances, are noted in the Test-Adjust-Balance Report Project Summary.

The air distribution system has been tested and balanced and final adjustments have been made in accordance with NEBB standards and the project specifications.

NEBB TAB FIRM: National TAB-Southeast

REGISTRATION NO: 3755

CERTIFIED BY: J. Scott Springer 23312

DATE: 9/26/2025

The hydronic distribution system has been tested and balanced and final adjustments have been made in accordance with NEBB standards and the project specifications.

NEBB TAB FIRM: National TAB-Southeast

REGISTRATION NO: 3755

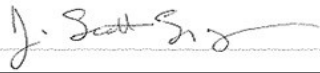
CERTIFIED BY: J. Scott Springer 23312

DATE: _____

Submitted and Certified by:

NEBB TAB FIRM: National TAB-Southeast

TAB PROFESSIONAL: J. Scott Springer

SIGNATURE: 

REGISTRATION NO: 3755 (NTAB) / 23312

CERTIFICATION EXP: 12/31/2025





National TAB

Testing, Adjusting, and Balancing Equipment



Function		Range	Minimum Accuracy	Instrument Information	Calibration Date	Date Due
AIR	AIR PRESSURE	0 in wg to 10 in wg	2% +/- 0.001 in wg	Shortridge ADM-880C S/N M05066	10/15/2024	10/15/2025
	AIR VELOCITY INSTRUMENT	50 fpm to 3900 fpm	+/- 5 % +/- 7 fpm	Shortridge ADM-880C S/N M05066	10/15/2024	10/15/2025
	DIRECT HOOD READING	100 cfm to 2000 cfm	+/- 3 % +/- 7 cfm	Shortridge Flow Hood	10/15/2024	10/15/2025
TEMPERATURE	AIR METER	-20 F to 240 F	+/- .5 % 2 F	Cooper ATKINS - SRH77A S/N 081820093	10/15/2024	10/15/2025
	AIR PROBE	-20 F to 240 F	+/- .5 % 2 F	Cooper ATKINS - PD1388 7-6 S/N 5028	10/15/2024	10/15/2025
	IMMERSION METER	-20 F to 240 F	+/- .5 % 2 F	Cooper ATKINS - SRH77A S/N 081820093	10/15/2024	10/15/2025
	IMMERSION PROBE	-20 F to 240 F	+/- .5 % 2 F	Cooper ATKINS - PD1388 7-6 S/N 1075	10/15/2024	10/15/2025
	CONTACT METER	-20 F to 240 F	+/- .5 % 2 F	Cooper ATKINS - SRH77A S/N 081820093	10/15/2024	10/15/2025
	CONTACT PROBE	-20 F to 240 F	+/- .5 % 2 F	Cooper ATKINS - PD1388 7-6 S/N 4011	10/15/2024	10/15/2025
HUMIDITY	HUMIDITY PROBE	10 % RH to 90 % RH	3% of reading	Cooper ATKINS - SRH77A S/N 090315046	10/15/2024	10/15/2025
ELECTRICAL	VOLTAGE MEASUREMENT	0 VAC to 600 VAC	2 % reading +/- 5 digits	Dwyer CM-1 - S/N 190800099	10/15/2024	10/15/2025
	AMPERAGE MEASUREMENT	0 Amperers to 100 Amperes	2 % reading +/- 5 digits	Dwyer CM-1 - S/N 190800099	10/15/2024	10/15/2025
ROTATION	ROTATION MEASUREMENT	60 rpm to 5000 rpm	2 % reading 2 rpm	Dwyer TAC-L - S/N S1100123	10/15/2024	10/15/2025
HYDRONIC	PRESSURE MEASUREMENT	-30 in Hg to 200 psi	±2% of reading +/- 1 psi	Shortridge HDM 250 - S/N W25059	6/18/2025	6/18/2026
	DIFFERENTIAL PRESSURE MEASUREMENT	0 psi - 80 psi	±2% of reading +/- 1 psi	Shortridge HDM 250 - S/N W25059	6/18/2025	6/18/2026
DALT	DUCT LEAKAGE	-10" - +10" wc	±1% of reading +/- 0.004" wc	Kanomax DALT 6900 S/N: 080439	3/7/2025	3/7/2026

Abbreviation List

A = Area (ft ²)	S.F. = Service Factor
AHU = Air Handling Unit	SF = Supply Fan
A _k = Effective Area	SP = Static Pressure
BHP = Brake Horsepower (IP) HP	SR = Supply Register
Btu = British Thermal Unit	T = Temperature
Btu/h = Btuh = BTUH = BTU/Hour	T _{ma} = Mixed Air Temperature
CL = Center Distance (used in belt formula)	T _{oa} = Outside Air Temperature
CD = Ceiling Diffuser	T _{ra} = Return Air Temperature
CF = Correction Factor	H = Head (in wc, ft wc, psi)
CFM = Volumetric Flow: Cubic Feet Per Minute	h = Enthalpy
CO ₂ = Carbon Dioxide	HP = Horsepower
CO = Carbon Monoxide	hr = Hour
C _v = Flow Constant	K _v = Flow constant (SI)
d = Diameter (in.) IP	kW = Kilowatt = 1000 Watts
Δ = Difference or Change (Final - Initial)	LAT = Leaving Air Temperature
DB = Dry Bulb	lb = Pounds
EA = Exhaust Air	LWT = Leaving Water Temperature
EAT = Entering Air Temperature	ma = Mixed Air
EF = Exhaust Fan	MIN = Minimum
Eff = Efficiency	MAX = Maximum
EG = Exhaust Grille	N/A = Not Applicable
ESP = External Static Pressure	NA = No Access
EWT = Entering Water Temperature	NL = Not Listed
°F = Degrees Fahrenheit, °F	NPSHA = Net Positive Suction Head Available
FPB = Fan Powered Box	NS = Not Specified
FLA = Full Load Amps	OA = Outside Air
fpm = Feet per Minute (fpm)	OAT = Outside Air Temperature
ft = Foot	PD = Sheave Pitch Diameter
gal = Gallons	P.D. = Pressure Drop
GPM = Gallons Per Minute (GPM)	PF = Power Factor
h = Enthalpy (BTU/lb dry air)	SG = Supply Grille
P = Pressure	SR = Supply Register
ppm = parts per million	TP = Total Pressure
psi = Pounds Per Square Inch	T _{ra} = Return Air Temperature
psid = PSI Differential	TS = Tip Speed (fpm) IP, (m/s) SI
r = Radius (in)	TSP = Total Static Pressure
% _{ra} = % of Return Air	V = Velocity
RA = Return Air	VAV = Variable Air Volume
RAT = Return Air Temperature	VD = Volume Damper
RF = Return Fan	VFD = Variable Frequency Drive
RG = Return Grille	W = Watt
RH = Relative Humidity	WB = Wet Bulb
RPM = Revolutions Per Minute	wg = wc = water gauge = water column
RTU = Roof Top Unit	WHP = Water Horsepower (IP)
SA = Supply Air	ω = Humidity Ratio

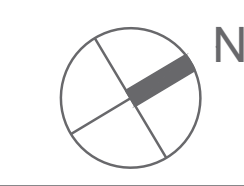
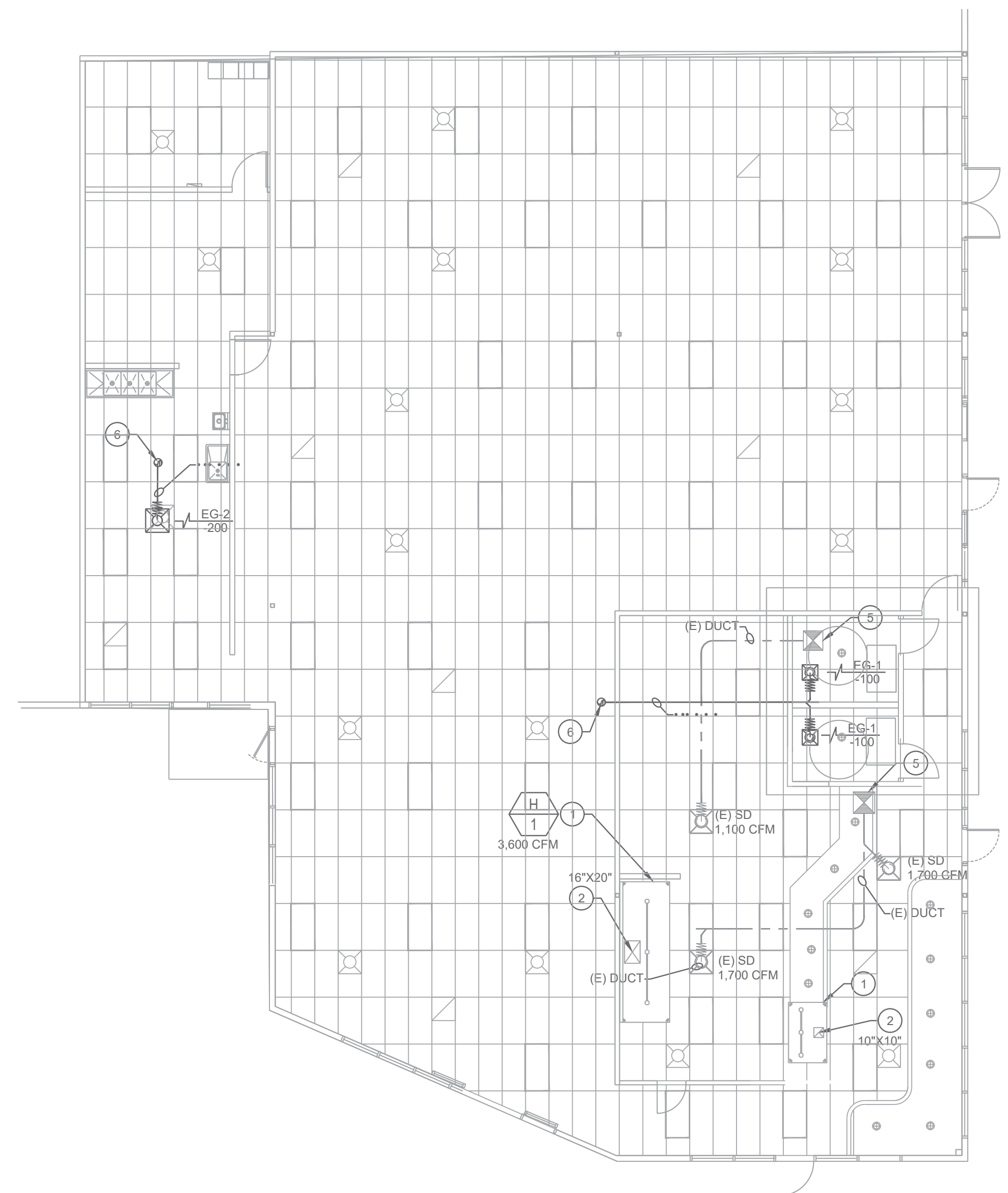
Reviewed for Code Compliance
NOV 18 2024
CSG CONSULTANTS, INC.



GAMA
 DRAFTING & ENGINEERING
 37625 SYCAMORE ST NEWARK, CA 94560
 gamadrafting@gmail.com (510) 861-1319

KEYED NOTES

- ① EXISTING TYPE I HOOD, SUSPENDED FROM STRUCTURE ABOVE. CAPTIVE AIR.
- ② (E) GREASE DUCT UP THROUGH ROOF.
- ③ (E) MAKE-UP AIR CEILING GRILLE.
- ④ NOT USED.
- ⑤ NOT USED.
- ⑥ EF ON ROOF.



KITCHEN VENTILATION FLOOR PLAN SCALE 1/4" = 1'-0" 1

GENERAL NOTES

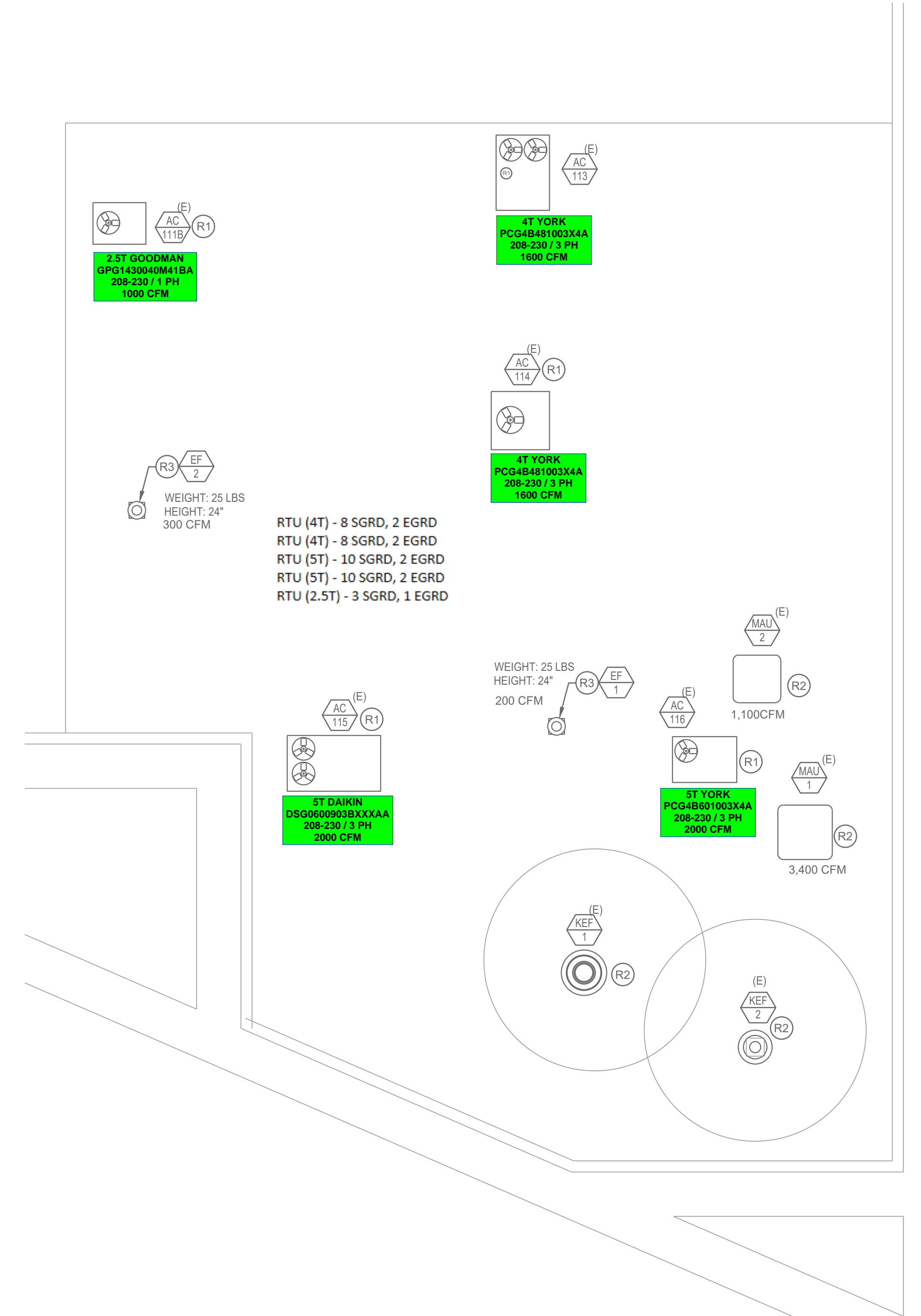
- 1. TERMINATION OF THE GREASE EXHAUST FAN/DUCT SYSTEM SHALL MEET ALL THE REQUIREMENTS OF SEC. 510.9, 2022 CALIFORNIA MECHANICAL CODE.
- 2. EXISTING ROOFTOP UNITS SHALL BE EQUIPPED WITH A SMOKE DETECTOR LOCATED IN THE MAIN SUPPLY AIR DUCT.
- 3. ALL AIR SUPPLYING UNITS SHALL BE SHUTDOWN GLOBALLY WHEN ANY OF THE SMOKE DETECTORS IS ACTIVATED.

KEYED NOTES

- (R1) EXISTING ROOFTOP UNITS TO REMAIN. PROVIDE SMOKE DETECTOR.
- (R2) EXISTING KITCHEN VENTILATION EQUIPMENT. CLEAN AND LEAVE IN "LIKE NEW CONDITIONS".
- (R3) CURB MOUNTED, DOWN-BLAST CONFIGURATION, EXHAUST FAN. LOCATE FAN MINIMUM 10 FEET AWAY FROM ANY FRESH AIR INTAKE OPENING. SEE DETAIL 3M6.2.



MECHANICAL ROOF FLOOR PLAN SCALE 1/4" = 1'-0" 2



RTU (4T) - 8 SGRD, 2 EGRD
 RTU (4T) - 8 SGRD, 2 EGRD
 RTU (5T) - 10 SGRD, 2 EGRD
 RTU (5T) - 10 SGRD, 2 EGRD
 RTU (2.5T) - 3 SGRD, 1 EGRD

WEIGHT: 25 LBS
 HEIGHT: 24"
 200 CFM

1,100CFM

3,400 CFM

T.I. - NAMASTE PLAZA
 415 MARY AVENUE
 SUNNYVALE CA 94085

Date: 10/11/23

Drawn: HP

Sheet:

M-2

National TAB

Project: Namaste Market (Sunnyvale, CA)
System/Unit: AHU/RTU



Asset: (E)AC-113

AREA:

Unit Data		
	Design	Actual
MFG	NA	YORK
Serial Num	-	W2M2141875
Model Num	NA	PCG4B481003X4A
Configuration	VERTICAL	VERTICAL
Num OA Filters 1	-	1
OA Filter Size 1	-	13X12
Num PreFilter 1	-	2
PreFilter Size 1	-	15X20X1

Test Data		
	Design	Actual
SF CFM	1600	1511
SF RPM	-	1400
RA CFM	1280	1194
OA CFM	320	317
RL Voltage	208	204
RL Amperage	5.4	5.3
OA Damper Position	-	20%
Brake Horse Power	-	0.98

Motor Data		
	Design	Actual
Motor MFG	-	BROAD-OCEAN
Frame	-	NL
Horsepower	-	3/4
Motor Rpm	-	1400
Phase	1	1
Rated Voltage	208-230	208-230
Rated Amperage	-	5.4
Service Factor	-	NL

Performance Data		
	Design	Actual
MA Plenum SP	-	-0.27"
Fan Suction SP	-	-0.43"
Fan Discharge SP	-	0.32"
Total ESP	-	0.59"
Fan Total SP	-	0.75"

Completed By: Zack Eismin on 09/23/2025

Unit Data - PHOTO LOG



National TAB

Project: Namaste Market (Sunnyvale, CA)

AHU/RTU



Diffuser Supply (GRD)

(E)AC-113/

Asset							
Asset Name	Location	Type	Size	DESIGN CFM	CFM(1)	FINAL CFM	% to design
113-1	BOH	SG	NL	200	181	181	90.5
113-2	BOH	SG	NL	200	187	187	93.5
113-3	BOH	SG	NL	200	185	185	92.5
113-4	BOH	SG	NL	200	199	199	99.5
113-5	BOH	SG	NL	200	196	196	98.0
113-6	BOH	SG	NL	200	191	191	95.5
113-7	BOH	SG	NL	200	185	185	92.5
113-8	BOH	SG	NL	200	187	187	93.5
Total				1600	1511	1511	94.44%

Diffuser Ret/Exh (GRD)

(E)AC-113/

Asset								
Asset Name	Location	Type	Size	DESIGN CFM	AK	CFM(1)	FINAL CFM	% to design
R113-1	BOH	RG	NL	640	1	603	603	94.2
R113-2	BOH	RG	NL	640	1	591	591	92.3
Total				1280		1194	1194	93.28%

Completed By: Zack Eismin on 09/23/2025

National TAB

Project: Namaste Market (Sunnyvale, CA)
System/Unit: AHU/RTU



Asset: (E)AC-114

AREA:

Unit Data		
	Design	Actual
MFG	NA	YORK
Serial Num	-	W2M2141850
Model Num	NA	PCG4B481003X4A
Configuration	VERTICAL	VERTICAL
Num OA Filters 1	-	1
OA Filter Size 1	-	12X13
Num PreFilter 1	-	2
PreFilter Size 1	-	15X20X1

Test Data		
	Design	Actual
SF CFM	1600	1541
SF RPM	-	1400
RA CFM	1280	1248
OA CFM	320	293
RL Voltage	208-230	204
RL Amperage	5.4	5.3
OA Damper Position	-	20%
Brake Horse Power	-	0.74

Motor Data		
	Design	Actual
Motor MFG	-	BROAD-OCEAN
Frame	-	NL
Horsepower	-	3/4
Motor Rpm	-	1400
Phase	3	3
Rated Voltage	208-230	208-230
Rated Amperage	-	5.4
Service Factor	-	NL

Performance Data		
	Design	Actual
MA Plenum SP	-	-0.24"
Fan Suction SP	-	-0.44"
Fan Discharge SP	-	0.29"
Total ESP	-	0.53"
Fan Total SP	-	0.73"

Completed By: Zack Eismin on 09/23/2025

Unit Data - PHOTO LOG



09/22/2025

National TAB

Project: Namaste Market (Sunnyvale, CA)

AHU/RTU



Diffuser Supply (GRD)

(E)AC-114/

Asset							
Asset Name	Location	Type	Size	DESIGN CFM	CFM(1)	FINAL CFM	% to design
S114-1	SALES FLOOR	SG	NL	200	191	191	95.5
S114-2	SALES FLOOR	SG	NL	200	189	189	94.5
S114-3	SALES FLOOR	SG	NL	200	193	193	96.5
S114-4	SALES FLOOR	SG	NL	200	199	199	99.5
S114-5	SALES FLOOR	SG	NL	200	191	191	95.5
S114-6	SALES FLOOR	SG	NL	200	201	201	100.5
S114-7	SALES FLOOR	SG	NL	200	186	186	93.0
S114-8	SALES FLOOR	SG	NL	200	191	191	95.5
Total				1600	1541	1541	96.31%

Diffuser Ret/Exh (GRD)

(E)AC-114/

Asset								
Asset Name	Location	Type	Size	DESIGN CFM	AK	CFM(1)	FINAL CFM	% to design
R114-1	SALES FLOOR	RG	NL	640	1	632	632	98.8
R114-2	SALES FLOOR	RG	NL	640	1	616	616	96.3
Total				1280		1248	1248	97.5%

Completed By: Zack Eismin on 09/23/2025

National TAB

Project: Namaste Market (Sunnyvale, CA)
System/Unit: AHU/RTU



Asset: (E)AC-115

AREA:

Unit Data		
	Design	Actual
MFG	NA	DAIKIN
Serial Num	-	1709439050
Model Num	NA	DSG0600903BXXXAA
Configuration	VERTICAL	VERTICAL
Num OA Filters 1	-	2
OA Filter Size 1	-	17X12.5
Num PreFilter 1	-	4
PreFilter Size 1	-	14X20X2

Test Data		
	Design	Actual
SF CFM	2000	1851
SF RPM	-	934
RA CFM	1600	1460
OA CFM	400	391
RL Voltage	208-230	204/204/204
RL Amperage	3.3	2.48/2.48/2.48
OA Damper Position	-	20%
Brake Horse Power	-	0.75

Motor Data		
	Design	Actual
Motor MFG	-	MARATHON
Frame	-	143T
Horsepower	-	1
Motor Rpm	-	1760
Phase	3	3
Rated Voltage	208-230	230
Rated Amperage	-	3.3
Service Factor	-	1.15

Performance Data		
	Design	Actual
MA Plenum SP	-	-0.27"
Fan Suction SP	-	-0.55"
Fan Discharge SP	-	0.42"
Total ESP	-	0.69"
Fan Total SP	-	0.97"

Drive Data	
	Actual
Motor Sheave Size	VL40
Motor Bore Size	7/8"
Motor Sheave SetPt	2 TURNS OPEN
Fan Sheave Size	6"
Fan Sheave Bore	1"
Belt CL Distance	20"
Num of Belts	1
Belt Size	AX52

Completed By: Zack Eismin on 09/23/2025

Unit Data - PHOTO LOG



09/22/2025

National TAB

Project: Namaste Market (Sunnyvale, CA)

AHU/RTU



Diffuser Supply (GRD)

(E)AC-115/

Asset							
Asset Name	Location	Type	Size	DESIGN CFM	CFM(1)	FINAL CFM	% to design
115-1	FOH	SG	NL	200	181	181	90.5
115-2	FOH	SG	NL	200	180	180	90.0
115-3	FOH	SG	NL	200	183	183	91.5
115-4	FOH	SG	NL	200	185	185	92.5
115-5	FOH	SG	NL	200	182	182	91.0
115-6	FOH	SG	NL	200	186	186	93.0
115-7	FOH	SG	NL	200	192	192	96.0
115-8	FOH	SG	NL	200	180	180	90.0
115-9	FOH	SG	NL	200	197	197	98.5
115-10	FOH	SG	NL	200	185	185	92.5
Total				2000	1851	1851	92.55%

Diffuser Ret/Exh (GRD)

(E)AC-115/

Asset								
Asset Name	Location	Type	Size	DESIGN CFM	AK	CFM(1)	FINAL CFM	% to design
R115-1	FOH	RG	NL	800	1	741	740	92.5
R115-2	FOH	RG	NL	800	1	719	720	90.0
Total				1600		1460	1460	91.25%

Completed By: Zack Eismin on 09/23/2025

National TAB

Project: Namaste Market (Sunnyvale, CA)
System/Unit: AHU/RTU



Asset: (E)AC-116

AREA:

Unit Data		
	Design	Actual
MFG	NA	YORK
Serial Num	-	W2L2104389
Model Num	NA	PCG4B601003X4A
Configuration	VERTICAL	VERTICAL
Num OA Filters 1	-	1
OA Filter Size 1	-	12.5X14
Num PreFilter 1	-	2
PreFilter Size 1	-	15X20X1

Test Data		
	Design	Actual
SF CFM	2000	1834
SF RPM	-	1400
RA CFM	-	1445
OA CFM	400	389
RL Voltage	208-230	204
RL Amperage	7.0	6.9
OA Damper Position	-	~20%
Brake Horse Power	-	0.99

Motor Data		
	Design	Actual
Motor MFG	-	BROAD-OCEAN
Frame	-	NL
Horsepower	-	1
Motor Rpm	-	1400
Phase	3	1
Rated Voltage	208-230	208-230
Rated Amperage	-	7.0
Service Factor	-	NL

Performance Data		
	Design	Actual
MA Plenum SP	-	-0.31"
Fan Suction SP	-	-0.54"
Fan Discharge SP	-	0.41"
Total ESP	-	0.72"
Fan Total SP	-	0.95"

Completed By: Zack Eismin on 09/23/2025

Unit Data - PHOTO LOG



09/22/2025

National TAB

Project: Namaste Market (Sunnyvale, CA)

AHU/RTU



Diffuser Supply (GRD)

(E)AC-116/

Asset							
Asset Name	Location	Type	Size	DESIGN CFM	CFM(1)	FINAL CFM	% to design
116-1	FOH	SG	NL	200	182	182	91.0
116-2	FOH	SG	NL	200	185	185	92.5
116-3	FOH	SG	NL	200	181	181	90.5
116-4	FOH	SG	NL	200	185	185	92.5
116-5	FOH	SG	NL	200	181	181	90.5
116-6	FOH	SG	NL	200	183	183	91.5
116-7	FOH	SG	NL	200	183	183	91.5
116-8	FOH	SG	NL	200	189	189	94.5
116-9	FOH	SG	NL	200	182	182	91.0
116-10	FOH	SG	NL	200	183	183	91.5
Total				2000	1834	1834	91.7%

Diffuser Ret/Exh (GRD)

(E)AC-116/

Asset								
Asset Name	Location	Type	Size	DESIGN CFM	AK	CFM(1)	FINAL CFM	% to design
R116-1				800	1	728	724	90.5
R116-2				800	1	719	721	90.1
Total				1600		1447	1445	90.31%

Completed By: Zack Eismin on 09/23/2025

National TAB

Project: Namaste Market (Sunnyvale, CA)
System/Unit: AHU/RTU



Asset: (E)AC-111B 1

AREA:

Unit Data		
	Design	Actual
MFG	NA	GOODMAN
Serial Num	-	1708200056
Model Num	NA	GPG1430040M41BA
Configuration	VERTICAL	VERTICAL
Num OA Filters 1	-	1
OA Filter Size 1	-	11X4.5
Num PreFilter 1	-	1
PreFilter Size 1	-	16X25X2

Test Data		
	Design	Actual
SF CFM	1000	921
SF RPM	-	1050
RA CFM	800	728
OA CFM	200	193
RL Voltage	208-230	204
RL Amperage	3.8	3.6
OA Damper Position	-	20%
Brake Horse Power	-	0.47

Motor Data		
	Design	Actual
Motor MFG	-	BROAD-OCEAN
Frame	-	NL
Horsepower	-	0.5
Motor Rpm	-	1050
Phase	1	1
Rated Voltage	208-230	208-230
Rated Amperage	-	3.8-3.6
Service Factor	-	NL

Performance Data		
	Design	Actual
MA Plenum SP	-	-0.17"
Fan Suction SP	-	-0.31"
Fan Discharge SP	-	0.24"
Total ESP	-	0.41"
Fan Total SP	-	0.55"

Completed By: Zack Eismin on 09/23/2025

National TAB

Project: Namaste Market (Sunnyvale, CA)

AHU/RTU



Diffuser Supply (GRD)

(E)AC-111B 1/

Asset							
Asset Name	Location	Type	Size	DESIGN CFM	CFM(1)	FINAL CFM	% to design
111-1	MEAT DEPT	SG	NL	333	307	307	92.2
111-2	MEAT DEPT	SG	NL	333	309	309	92.8
111-3	MEAT DEPT	SG	NL	334	305	305	91.3
Total				1000	921	921	92.1%

Diffuser Ret/Exh (GRD)

(E)AC-111B 1/

Asset								
Asset Name	Location	Type	Size	DESIGN CFM	AK	CFM(1)	FINAL CFM	% to design
R111-1	MEAT DEPT	RG	NL	800	1	728	728	91.0
Total				800		728	728	91%

Completed By: Zack Eismin on 09/23/2025

National TAB

Project: Namaste Market (Sunnyvale, CA)
System/Unit: FAN - Exhaust



Asset: EF1

AREA:

Unit Data		
	Design	Actual
MFG	NA	GREENHECK
Model Num	NA	G-090-VG-1-17-X
Serial Num	-	26485111
Configuration	CRE	CRE

Test Data		
	Design	Actual
CFM	250	254
Fan RPM	-	1575
Fan Rotation	-	CCW
Motor RPM	-	1575
System SetPt	-	9
RL Voltage	-	NA
RL Amperage	-	NA
Total ESP	0.35	0.23"
Fan Inlet SP	-	-0.23"

Motor Data		
	Design	Actual
Motor MFG	-	VARI-GREEN
Frame	-	NL
Horsepower	-	0.1
Motor Rpm	-	1750
Phase	-	1
Voltage (rated)	-	115
Amperage (rated)	-	1.38
Service Factor	-	NL

Completed By: Zack Eismin on 09/23/2025

Unit Data - PHOTO LOG



09/23/2025

National TAB

Project: Namaste Market (Sunnyvale, CA)
System/Unit: FAN - Exhaust



Asset: EF2

AREA:

Unit Data		
	Design	Actual
MFG	NA	GREENHECK
Model Num	NA	G-080-D-1-17-X
Serial Num	-	26485106
Configuration	CRE	CRE

Test Data		
	Design	Actual
CFM	300	289
Fan RPM	-	1550
Fan Rotation	-	CCW
Motor RPM	-	1550
System SetPt	-	SINGLE SPEED
RL Voltage	-	NA
RL Amperage	-	NA
Total ESP	0.30	0.29"
Fan Inlet SP	-	-0.29"

Motor Data		
	Design	Actual
Motor MFG	-	MCMILLAN
Frame	-	NL
Horsepower	-	1/15
Motor Rpm	-	1550
Phase	-	1
Voltage (rated)	-	120
Amperage (rated)	-	1.2
Service Factor	-	NL

Completed By: Zack Eismin on 09/23/2025

Unit Data - PHOTO LOG



09/23/2025