

**Report By:**

National TAB  
1329 E. KEMPER ROAD  
SUITE 4210  
CINCINNATI, OH 45246



**Report: TAB**

**Function: Test, Adjust, & Balance**

**Date: 09/23/2025**

**Completed By: National TAB**

# PROJECT

## Namaste Market (Sunnyvale, CA)

415 Mary Avenue

Sunnyvale, CA 94085

### Client

Martinico & Sons, Inc.

1776 S. 7th St.

San Jose, CA 95112

# National TAB

Project: Namaste Market (Sunnyvale, CA)

## Table Of Contents

| Section       | Page # |
|---------------|--------|
| AHU/RTU       | 3      |
| FAN - Exhaust | 17     |

# National TAB

Project: Namaste Market (Sunnyvale, CA)  
System/Unit: AHU/RTU



Asset: (E)AC-113

AREA:

| Unit Data        |          |                |
|------------------|----------|----------------|
|                  | Design   | Actual         |
| MFG              | NA       | YORK           |
| Serial Num       | -        | W2M2141875     |
| Model Num        | NA       | PCG4B481003X4A |
| Configuration    | VERTICAL | VERTICAL       |
| Num OA Filters 1 | -        | 1              |
| OA Filter Size 1 | -        | 13X12          |
| Num PreFilter 1  | -        | 2              |
| PreFilter Size 1 | -        | 15X20X1        |

| Test Data          |         |        |
|--------------------|---------|--------|
|                    | Design  | Actual |
| SF CFM             | 1600    | 1511   |
| SF RPM             | -       | 1400   |
| RA CFM             | 1280    | 1194   |
| OA CFM             | 320     | 317    |
| RL Voltage         | 208-230 | 204    |
| RL Amperage        | -       | 5.3    |
| OA Damper Position | -       | 20%    |
| Brake Horse Power  | -       | 0.98   |

| Motor Data     |         |             |
|----------------|---------|-------------|
|                | Design  | Actual      |
| Motor MFG      | -       | BROAD-OCEAN |
| Frame          | -       | NL          |
| Horsepower     | -       | 3/4         |
| Motor Rpm      | -       | 1400        |
| Phase          | 3       | 1           |
| Rated Voltage  | 208-230 | 208-230     |
| Rated Amperage | -       | 5.4         |
| Service Factor | -       | NL          |

| Performance Data |        |        |
|------------------|--------|--------|
|                  | Design | Actual |
| MA Plenum SP     | -      | -0.27" |
| Fan Suction SP   | -      | -0.43" |
| Fan Discharge SP | -      | 0.32"  |
| Total ESP        | -      | 0.59"  |
| Fan Total SP     | -      | 0.75"  |

| Drive Data         |        |
|--------------------|--------|
|                    | Actual |
| Motor Sheave Size  | DD     |
| Motor Bore Size    | DD     |
| Motor Sheave SetPt | DD     |
| Fan Sheave Size    | DD     |
| Fan Sheave Bore    | DD     |
| Belt CL Distance   | DD     |
| Num of Belts       | DD     |
| Belt Size          | DD     |

Completed By: Zack Eismin on 09/23/2025

## Unit Data - PHOTO LOG



09/22/2025

# National TAB

Project: Namaste Market (Sunnyvale, CA)

## AHU/RTU



**Diffuser Supply (GRD)**

(E)AC-113/

| Asset      |          |      |      |            |        |           |             |
|------------|----------|------|------|------------|--------|-----------|-------------|
| Asset Name | Location | Type | Size | DESIGN CFM | CFM(1) | FINAL CFM | % to design |
| 113-1      | BOH      | SG   | NL   | 200        | 181    | 181       | 90.5        |
| 113-2      | BOH      | SG   | NL   | 200        | 187    | 187       | 93.5        |
| 113-3      | BOH      | SG   | NL   | 200        | 185    | 185       | 92.5        |
| 113-4      | BOH      | SG   | NL   | 200        | 199    | 199       | 99.5        |
| 113-5      | BOH      | SG   | NL   | 200        | 196    | 196       | 98.0        |
| 113-6      | BOH      | SG   | NL   | 200        | 191    | 191       | 95.5        |
| 113-7      | BOH      | SG   | NL   | 200        | 185    | 185       | 92.5        |
| 113-8      | BOH      | SG   | NL   | 200        | 187    | 187       | 93.5        |
| Total      |          |      |      | 1600       | 1511   | 1511      | 94.44%      |

**Diffuser Ret/Exh (GRD)**

(E)AC-113/

| Asset      |          |      |      |            |    |        |           |             |
|------------|----------|------|------|------------|----|--------|-----------|-------------|
| Asset Name | Location | Type | Size | DESIGN CFM | AK | CFM(1) | FINAL CFM | % to design |
| R113-1     | BOH      | RG   | NL   | 640        | 1  | 603    | 603       | 94.2        |
| R113-2     | BOH      | RG   | NL   | 640        | 1  | 591    | 591       | 92.3        |
| Total      |          |      |      | 1280       |    | 1194   | 1194      | 93.28%      |

Completed By: Zack Eismin on 09/23/2025

# National TAB

Project: Namaste Market (Sunnyvale, CA)  
System/Unit: AHU/RTU



Asset: (E)AC-114

AREA:

| Unit Data        |          |                |
|------------------|----------|----------------|
|                  | Design   | Actual         |
| MFG              | NA       | YORK           |
| Serial Num       | -        | W2M2141850     |
| Model Num        | NA       | PCG4B481003X4A |
| Configuration    | VERTICAL | VERTICAL       |
| Num OA Filters 1 | -        | 1              |
| OA Filter Size 1 | -        | 12X13          |
| Num PreFilter 1  | -        | 2              |
| PreFilter Size 1 | -        | 15X20X1        |

| Test Data          |         |        |
|--------------------|---------|--------|
|                    | Design  | Actual |
| SF CFM             | 1600    | 1541   |
| SF RPM             | -       | 1400   |
| RA CFM             | 1280    | 1248   |
| OA CFM             | 320     | 293    |
| RL Voltage         | 208-230 | 204    |
| RL Amperage        | -       | 5.3    |
| OA Damper Position | -       | 20%    |
| Brake Horse Power  | -       | 0.74   |

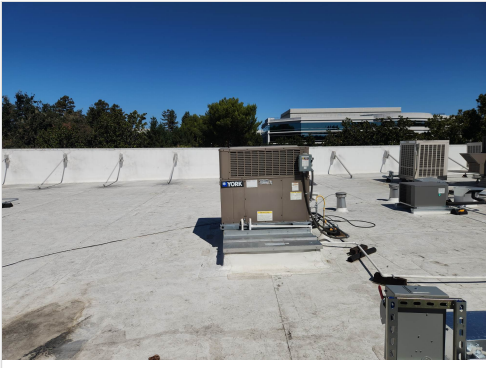
| Motor Data     |         |             |
|----------------|---------|-------------|
|                | Design  | Actual      |
| Motor MFG      | -       | BROAD-OCEAN |
| Frame          | -       | NL          |
| Horsepower     | -       | 3/4         |
| Motor Rpm      | -       | 1400        |
| Phase          | 3       | 3           |
| Rated Voltage  | 208-230 | 208-230     |
| Rated Amperage | -       | 5.4         |
| Service Factor | -       | NL          |

| Performance Data |        |        |
|------------------|--------|--------|
|                  | Design | Actual |
| MA Plenum SP     | -      | -0.24" |
| Fan Suction SP   | -      | -0.44" |
| Fan Discharge SP | -      | 0.29"  |
| Total ESP        | -      | 0.53"  |
| Fan Total SP     | -      | 0.73"  |

| Drive Data         |        |
|--------------------|--------|
|                    | Actual |
| Motor Sheave Size  | DD     |
| Motor Bore Size    | DD     |
| Motor Sheave SetPt | DD     |
| Fan Sheave Size    | DD     |
| Fan Sheave Bore    | DD     |
| Belt CL Distance   | DD     |
| Num of Belts       | DD     |
| Belt Size          | DD     |

Completed By: Zack Eismin on 09/23/2025

## Unit Data - PHOTO LOG



09/22/2025

# National TAB

Project: Namaste Market (Sunnyvale, CA)

## AHU/RTU



**Diffuser Supply (GRD)**

(E)AC-114/

| Asset      |             |      |      |            |        |           |             |
|------------|-------------|------|------|------------|--------|-----------|-------------|
| Asset Name | Location    | Type | Size | DESIGN CFM | CFM(1) | FINAL CFM | % to design |
| S114-1     | SALES FLOOR | SG   | NL   | 200        | 191    | 191       | 95.5        |
| S114-2     | SALES FLOOR | SG   | NL   | 200        | 189    | 189       | 94.5        |
| S114-3     | SALES FLOOR | SG   | NL   | 200        | 193    | 193       | 96.5        |
| S114-4     | SALES FLOOR | SG   | NL   | 200        | 199    | 199       | 99.5        |
| S114-5     | SALES FLOOR | SG   | NL   | 200        | 191    | 191       | 95.5        |
| S114-6     | SALES FLOOR | SG   | NL   | 200        | 201    | 201       | 100.5       |
| S114-7     | SALES FLOOR | SG   | NL   | 200        | 186    | 186       | 93.0        |
| S114-8     | SALES FLOOR | SG   | NL   | 200        | 191    | 191       | 95.5        |
| Total      |             |      |      | 1600       | 1541   | 1541      | 96.31%      |

**Diffuser Ret/Exh (GRD)**

(E)AC-114/

| Asset      |             |      |      |            |    |        |           |             |
|------------|-------------|------|------|------------|----|--------|-----------|-------------|
| Asset Name | Location    | Type | Size | DESIGN CFM | AK | CFM(1) | FINAL CFM | % to design |
| R114-1     | SALES FLOOR | RG   | NL   | 640        | 1  | 632    | 632       | 98.8        |
| R114-2     | SALES FLOOR | RG   | NL   | 640        | 1  | 616    | 616       | 96.3        |
| Total      |             |      |      | 1280       |    | 1248   | 1248      | 97.5%       |

Completed By: Zack Eismin on 09/23/2025

# National TAB

Project: Namaste Market (Sunnyvale, CA)  
System/Unit: AHU/RTU



Asset: (E)AC-115

AREA:

| Unit Data        |          |                  |
|------------------|----------|------------------|
|                  | Design   | Actual           |
| MFG              | NA       | DAIKIN           |
| Serial Num       | -        | 1709439050       |
| Model Num        | NA       | DSG0600903BXXXAA |
| Configuration    | VERTICAL | VERTICAL         |
| Num OA Filters 1 | -        | 2                |
| OA Filter Size 1 | -        | 17X12.5          |
| Num PreFilter 1  | -        | 4                |
| PreFilter Size 1 | -        | 14X20X2          |

| Test Data          |         |                |
|--------------------|---------|----------------|
|                    | Design  | Actual         |
| SF CFM             | 2000    | 1851           |
| SF RPM             | -       | 934            |
| RA CFM             | 1600    | 1460           |
| OA CFM             | 400     | 391            |
| RL Voltage         | 208-230 | 204/204/204    |
| RL Amperage        | -       | 2.48/2.48/2.48 |
| OA Damper Position | -       | 20%            |
| Brake Horse Power  | -       | 0.75           |

| Motor Data     |         |          |
|----------------|---------|----------|
|                | Design  | Actual   |
| Motor MFG      | -       | MARATHON |
| Frame          | -       | 143T     |
| Horsepower     | -       | 1        |
| Motor Rpm      | -       | 1760     |
| Phase          | 3       | 3        |
| Rated Voltage  | 208-230 | 230      |
| Rated Amperage | -       | 3.3      |
| Service Factor | -       | 1.15     |

| Performance Data |        |        |
|------------------|--------|--------|
|                  | Design | Actual |
| MA Plenum SP     | -      | -0.27" |
| Fan Suction SP   | -      | -0.55" |
| Fan Discharge SP | -      | 0.42"  |
| Total ESP        | -      | 0.69"  |
| Fan Total SP     | -      | 0.97"  |

| Drive Data         |              |
|--------------------|--------------|
|                    | Actual       |
| Motor Sheave Size  | VL40         |
| Motor Bore Size    | 7/8"         |
| Motor Sheave SetPt | 2 TURNS OPEN |
| Fan Sheave Size    | 6"           |
| Fan Sheave Bore    | 1"           |
| Belt CL Distance   | 20"          |
| Num of Belts       | 1            |
| Belt Size          | AX52         |

Completed By: Zack Eismin on 09/23/2025

## Unit Data - PHOTO LOG



09/22/2025

# National TAB

Project: Namaste Market (Sunnyvale, CA)

## AHU/RTU



**Diffuser Supply (GRD)**

**(E)AC-115/**

| Asset      |          |      |      |            |        |           |             |
|------------|----------|------|------|------------|--------|-----------|-------------|
| Asset Name | Location | Type | Size | DESIGN CFM | CFM(1) | FINAL CFM | % to design |
| 115-1      | FOH      | SG   | NL   | 200        | 181    | 181       | 90.5        |
| 115-2      | FOH      | SG   | NL   | 200        | 180    | 180       | 90.0        |
| 115-3      | FOH      | SG   | NL   | 200        | 183    | 183       | 91.5        |
| 115-4      | FOH      | SG   | NL   | 200        | 185    | 185       | 92.5        |
| 115-5      | FOH      | SG   | NL   | 200        | 182    | 182       | 91.0        |
| 115-6      | FOH      | SG   | NL   | 200        | 186    | 186       | 93.0        |
| 115-7      | FOH      | SG   | NL   | 200        | 192    | 192       | 96.0        |
| 115-8      | FOH      | SG   | NL   | 200        | 180    | 180       | 90.0        |
| 115-9      | FOH      | SG   | NL   | 200        | 197    | 197       | 98.5        |
| 115-10     | FOH      | SG   | NL   | 200        | 185    | 185       | 92.5        |
| Total      |          |      |      | 2000       | 1851   | 1851      | 92.55%      |

**Diffuser Ret/Exh (GRD)**

**(E)AC-115/**

| Asset      |          |      |      |            |    |        |           |             |
|------------|----------|------|------|------------|----|--------|-----------|-------------|
| Asset Name | Location | Type | Size | DESIGN CFM | AK | CFM(1) | FINAL CFM | % to design |
| R115-1     | FOH      | RG   | NL   | 800        | 1  | 741    | 741       | 92.6        |
| R115-2     | FOH      | RG   | NL   | 800        | 1  | 719    | 719       | 89.9        |
| Total      |          |      |      | 1600       |    | 1460   | 1460      | 91.25%      |

Completed By: Zack Eismin on 09/23/2025

# National TAB

Project: Namaste Market (Sunnyvale, CA)  
System/Unit: AHU/RTU



Asset: (E)AC-116

AREA:

| Unit Data        |          |                |
|------------------|----------|----------------|
|                  | Design   | Actual         |
| MFG              | NA       | YORK           |
| Serial Num       | -        | W2L2104389     |
| Model Num        | NA       | PCG4B601003X4A |
| Configuration    | VERTICAL | VERTICAL       |
| Num OA Filters 1 | -        | 1              |
| OA Filter Size 1 | -        | 12.5X14        |
| Num PreFilter 1  | -        | 2              |
| PreFilter Size 1 | -        | 15X20X1        |

| Test Data          |         |        |
|--------------------|---------|--------|
|                    | Design  | Actual |
| SF CFM             | 2000    | 1834   |
| SF RPM             | -       | 1400   |
| RA CFM             | -       | 1445   |
| OA CFM             | 400     | 389    |
| RL Voltage         | 208-230 | 204    |
| RL Amperage        | -       | 6.9    |
| OA Damper Position | -       | ~20%   |
| Brake Horse Power  | -       | 0.99   |

| Motor Data     |         |             |
|----------------|---------|-------------|
|                | Design  | Actual      |
| Motor MFG      | -       | BROAD-OCEAN |
| Frame          | -       | NL          |
| Horsepower     | -       | 1           |
| Motor Rpm      | -       | 1400        |
| Phase          | 3       | 1           |
| Rated Voltage  | 208-230 | 208-230     |
| Rated Amperage | -       | 7           |
| Service Factor | -       | NL          |

| Performance Data |        |        |
|------------------|--------|--------|
|                  | Design | Actual |
| MA Plenum SP     | -      | -0.31" |
| Fan Suction SP   | -      | -0.54" |
| Fan Discharge SP | -      | 0.41"  |
| Total ESP        | -      | 0.72"  |
| Fan Total SP     | -      | 0.95"  |

| Drive Data         |        |
|--------------------|--------|
|                    | Actual |
| Motor Sheave Size  | DD     |
| Motor Bore Size    | DD     |
| Motor Sheave SetPt | DD     |
| Fan Sheave Size    | DD     |
| Fan Sheave Bore    | DD     |
| Belt CL Distance   | DD     |
| Num of Belts       | DD     |
| Belt Size          | DD     |

Completed By: Zack Eismin on 09/23/2025

## Unit Data - PHOTO LOG



09/22/2025

# National TAB

Project: Namaste Market (Sunnyvale, CA)

## AHU/RTU



**Diffuser Supply (GRD)**

**(E)AC-116/**

| Asset      |          |      |      |            |        |           |             |
|------------|----------|------|------|------------|--------|-----------|-------------|
| Asset Name | Location | Type | Size | DESIGN CFM | CFM(1) | FINAL CFM | % to design |
| 116-1      | FOH      | SG   | NL   | 200        | 182    | 182       | 91.0        |
| 116-2      | FOH      | SG   | NL   | 200        | 185    | 185       | 92.5        |
| 116-3      | FOH      | SG   | NL   | 200        | 181    | 181       | 90.5        |
| 116-4      | FOH      | SG   | NL   | 200        | 185    | 185       | 92.5        |
| 116-5      | FOH      | SG   | NL   | 200        | 181    | 181       | 90.5        |
| 116-6      | FOH      | SG   | NL   | 200        | 183    | 183       | 91.5        |
| 116-7      | FOH      | SG   | NL   | 200        | 183    | 183       | 91.5        |
| 116-8      | FOH      | SG   | NL   | 200        | 189    | 189       | 94.5        |
| 116-9      | FOH      | SG   | NL   | 200        | 182    | 182       | 91.0        |
| 116-10     | FOH      | SG   | NL   | 200        | 183    | 183       | 91.5        |
| Total      |          |      |      | 2000       | 1834   | 1834      | 91.7%       |

**Diffuser Ret/Exh (GRD)**

**(E)AC-116/**

| Asset      |          |      |      |            |    |        |           |             |
|------------|----------|------|------|------------|----|--------|-----------|-------------|
| Asset Name | Location | Type | Size | DESIGN CFM | AK | CFM(1) | FINAL CFM | % to design |
| R116-1     |          |      |      | 800        | 1  | 728    | 724       | 90.5        |
| R116-2     |          |      |      | 800        | 1  | 719    | 721       | 90.1        |
| Total      |          |      |      | 1600       |    | 1447   | 1445      | 90.31%      |

Completed By: Zack Eismin on 09/23/2025

# National TAB

Project: Namaste Market (Sunnyvale, CA)  
System/Unit: AHU/RTU



Asset: (E)AC-111B 1

AREA:

| Unit Data        |          |                 |
|------------------|----------|-----------------|
|                  | Design   | Actual          |
| MFG              | NA       | GOODMAN         |
| Serial Num       | -        | 1708200056      |
| Model Num        | NA       | GPG1430040M41BA |
| Configuration    | VERTICAL | VERTICAL        |
| Num OA Filters 1 | -        | 1               |
| OA Filter Size 1 | -        | 11X4.5          |
| Num PreFilter 1  | -        | 1               |
| PreFilter Size 1 | -        | 16X25X2         |

| Test Data          |         |        |
|--------------------|---------|--------|
|                    | Design  | Actual |
| SF CFM             | 1000    | 921    |
| SF RPM             | -       | 1050   |
| RA CFM             | 800     | 728    |
| OA CFM             | 200     | 193    |
| RL Voltage         | 208-230 | 204    |
| RL Amperage        | -       | 3.6    |
| OA Damper Position | -       | 20%    |
| Brake Horse Power  | -       | 0.47   |

| Motor Data     |         |             |
|----------------|---------|-------------|
|                | Design  | Actual      |
| Motor MFG      | -       | BROAD-OCEAN |
| Frame          | -       | NL          |
| Horsepower     | -       | 0.5         |
| Motor Rpm      | -       | 1050        |
| Phase          | 1       | 1           |
| Rated Voltage  | 208-230 | 208-230     |
| Rated Amperage | -       | 3.8-3.6     |
| Service Factor | -       | NL          |

| Performance Data |        |        |
|------------------|--------|--------|
|                  | Design | Actual |
| MA Plenum SP     | -      | -0.17" |
| Fan Suction SP   | -      | -0.31" |
| Fan Discharge SP | -      | 0.24"  |
| Total ESP        | -      | 0.41"  |
| Fan Total SP     | -      | 0.55"  |

| Drive Data         |        |
|--------------------|--------|
|                    | Actual |
| Motor Sheave Size  | DD     |
| Motor Bore Size    | DD     |
| Motor Sheave SetPt | DD     |
| Fan Sheave Size    | DD     |
| Fan Sheave Bore    | DD     |
| Belt CL Distance   | DD     |
| Num of Belts       | DD     |
| Belt Size          | DD     |

Completed By: Zack Eismin on 09/23/2025

# National TAB

Project: Namaste Market (Sunnyvale, CA)

## AHU/RTU



**Diffuser Supply (GRD)**

(E)AC-111B 1/

| Asset      |           |      |      |            |        |           |             |
|------------|-----------|------|------|------------|--------|-----------|-------------|
| Asset Name | Location  | Type | Size | DESIGN CFM | CFM(1) | FINAL CFM | % to design |
| 111-1      | MEAT DEPT | SG   | NL   | 333        | 307    | 307       | 92.2        |
| 111-2      | MEAT DEPT | SG   | NL   | 333        | 309    | 309       | 92.8        |
| 111-3      | MEAT DEPT | SG   | NL   | 334        | 305    | 305       | 91.3        |
| Total      |           |      |      | 1000       | 921    | 921       | 92.1%       |

**Diffuser Ret/Exh (GRD)**

(E)AC-111B 1/

| Asset      |           |      |      |            |    |        |           |             |
|------------|-----------|------|------|------------|----|--------|-----------|-------------|
| Asset Name | Location  | Type | Size | DESIGN CFM | AK | CFM(1) | FINAL CFM | % to design |
| R111-1     | MEAT DEPT | RG   | NL   | 800        | 1  | 728    | 728       | 91.0        |
| Total      |           |      |      | 800        |    | 728    | 728       | 91%         |

Completed By: Zack Eismin on 09/23/2025

# National TAB

Project: Namaste Market (Sunnyvale, CA)  
System/Unit: FAN - Exhaust



Asset: EF1

AREA:

| Unit Data     |        |                 |
|---------------|--------|-----------------|
|               | Design | Actual          |
| MFG           | NA     | GREENHECK       |
| Model Num     | NA     | G-090-VG-1-17-X |
| Serial Num    | -      | 26485111        |
| Configuration | -      | VERTICAL        |

| Test Data        |        |        |
|------------------|--------|--------|
|                  | Design | Actual |
| CFM              | 250    | 254    |
| Fan RPM          | -      | 1575   |
| Fan Rotation     | -      | CCW    |
| Motor RPM        | -      | 1575   |
| System SetPt     | -      | 9      |
| RL Voltage       | -      | NA     |
| RL Amperage      | -      | NA     |
| Total ESP        | 0.35   | 0.23"  |
| Fan Inlet SP     | -      | -0.23" |
| Fan Discharge SP | -      | ATM    |

| Motor Data       |        |            |
|------------------|--------|------------|
|                  | Design | Actual     |
| Motor MFG        | -      | VARI-GREEN |
| Frame            | -      | NL         |
| Horsepower       | -      | 0.1        |
| Motor Rpm        | -      | 1750       |
| Phase            | -      | 1          |
| Voltage (rated)  | -      | 115        |
| Amperage (rated) | -      | 1.38       |
| Service Factor   | -      | NL         |

Completed By: Zack Eismin on 09/23/2025

## Unit Data - PHOTO LOG



09/23/2025

# National TAB

Project: Namaste Market (Sunnyvale, CA)  
System/Unit: FAN - Exhaust



Asset: EF2

AREA:

| Unit Data     |        |                |
|---------------|--------|----------------|
|               | Design | Actual         |
| MFG           | NA     | GREENHECK      |
| Model Num     | NA     | G-080-D-1-17-X |
| Serial Num    | -      | 26485106       |
| Configuration | -      | VERTICAL       |

| Test Data        |        |              |
|------------------|--------|--------------|
|                  | Design | Actual       |
| CFM              | 300    | 289          |
| Fan RPM          | -      | 1550         |
| Fan Rotation     | -      | CCW          |
| Motor RPM        | -      | 1550         |
| System SetPt     | -      | SINGLE SPEED |
| RL Voltage       | -      | NA           |
| RL Amperage      | -      | NA           |
| Total ESP        | 0.30   | 0.29"        |
| Fan Inlet SP     | -      | -0.29"       |
| Fan Discharge SP | -      | ATM          |

| Motor Data       |        |          |
|------------------|--------|----------|
|                  | Design | Actual   |
| Motor MFG        | -      | MCMILLAN |
| Frame            | -      | NL       |
| Horsepower       | -      | 1/15     |
| Motor Rpm        | -      | 1550     |
| Phase            | -      | 1        |
| Voltage (rated)  | -      | 120      |
| Amperage (rated) | -      | 1.2      |
| Service Factor   | -      | NL       |

Completed By: Zack Eismin on 09/23/2025

### Unit Data - PHOTO LOG



09/23/2025