

| KITCHEN HOOD SCHEDULE (EXISTING) | | | | | | | | | | | | | | |
|----------------------------------|-------------------------------|------|--------------|-----------------|--------------|-------------|-------------|--------|------|---------|-----------|------|---------|---------|
| SYMBOL | FIXTURES UNDER HOOD | TYPE | MFGR. | MODEL | SIZE | EXHAUST CFM | COLLAR/DUCT | | | FILTERS | | | | REMARKS |
| | | | | | | | SIZE | SQ.FT. | FPM | SIZE | FREE AREA | QTY. | SP | |
| | PIZZA OVEN, STOCK, DEEP FRYER | I | CAPTIVE AIRE | S424 ND-2-PSP-F | 12'-0"X3'-6" | 3,600 | 16X25 | 2.22 | 1620 | 20"X20" | 1.69 | 7 | -0.462" | 1,2 |
| | PIZZA OVEN, STOCK, DEEP FRYER | I | CAPTIVE AIRE | S424 ND-2-PSP-F | 5'-0"X3'-6" | 1,250 | 12X20 | 1.54 | 1728 | 20"X16" | 1.73 | 9 | -0.462" | 1,2 |

1. UL LISTED, UL-710, W/ ANSUL SYSTEM INTERLOCKED W/ KEF-1, MUA-1 2. HOOD HANGING WEIGHT = 642 LBS.

| MAKE UP AIR UNIT SCHEDULE (EXISTING) | | | | | | | | | | |
|--------------------------------------|----------------------|-------------------|----------|--------------------|----------------------------------|----------------|------------------------|--------------------|------------------------------|---------|
| EQUIP. TAG | MANUFACTURER & MODEL | AREA SERVED | LOCATION | SUPPLY FAN SECTION | | | | | ELECTRICAL SERVICE (V/ph/Hz) | REMARKS |
| | | | | SUPPLY AIR (cfm) | EXTERNAL STATIC PRESSURE (in wc) | REV./MIN (rpm) | MOTOR HORSE POWER (hp) | FULL LOAD AMPS (A) | | |
| | FRIGIKING FS 650 | KITCHEN HOOD, H-1 | ROOF | 3400 | 0.65 | 408 | 3/4 | 5.8 | 120/1/60 | 1-3 |
| | PHOENIX DB801 | KITCHEN HOOD, H-2 | ROOF | 1100 | 0.5 | 1307 | 2.0 | 6.1 | 208/3/60 | 1-3 |

1. EXISTING ROOF MOUNTED MAKE-UP AIR UNIT. 3. PROVIDE SMOKE DETECTOR IN THE SUPPLY AIR DUCT
2. CLEAN UNIT AND REPLACE BELTS.

| KITCHEN EXHAUST FAN SCHEDULE (EXISTING) | | | | | | | | | | | | | |
|---|---------------------------------|-----------------------|----------|----------------|---------------------------------|-------------------------|-------------------------|-------------------------|------------------------|-----|------------------------------|---------|--|
| EQUIP. TAG | MANUFACTURER & MODEL | SERVICE | LOCATION | AIR FLOW (cfm) | TOTAL STATIC PRESSURE (in w.c.) | FAN REVOL./MINUTE (rpm) | MOTOR REVOL./MIN. (rpm) | BREAK HORSE-POWER (bhp) | MOTOR HORSE-POWER (hp) | FLA | ELECTRICAL SERVICE (V/ph/Hz) | REMARKS | |
| | PENN VENTILATORS FUMEX FX27B | TYPE I KITCHEN HOOD 1 | ROOF | 3600 | 1.25 | 804 | - | 1.45 | 2.0 | - | 208/1/60 | 1,2,3 | |
| | PENN VENTILATORS FUMEX FX13BHFT | TYPE I KITCHEN HOOD 1 | ROOF | 1250 | 1.25 | 1180 | - | 0.65 | 0.75 | - | 208/1/60 | 1,2,3 | |

1. EXISTING ROOF MOUNTED EXHAUST FAN 3. PROVIDE NEW GREASE CONTAINMENT
2. CLEAN UNIT AND REPLACE BELTS.

| EXHAUST FAN SCHEDULE | | | | | | | | | | | | | |
|----------------------|----------------------|-----------------|----------|----------------|---------------------------------|-------------------------|-------------------------|-------------------------|------------------------|-----|------------------------------|------------------------|-------------|
| EQUIP. TAG | MANUFACTURER & MODEL | SERVICE | LOCATION | AIR FLOW (cfm) | TOTAL STATIC PRESSURE (in w.c.) | FAN REVOL./MINUTE (rpm) | MOTOR REVOL./MIN. (rpm) | BREAK HORSE-POWER (bhp) | MOTOR HORSE-POWER (hp) | FLA | ELECTRICAL SERVICE (V/ph/Hz) | OPERATING WEIGHT (lbs) | REMARKS |
| | GREENHECK G-090-D | RESTROOMS | ROOF | 250 | 0.35 | 1390 | - | 0.04 | 1/20 | - | 115/1/60 | 30 | 1,2,3,4,5,6 |
| | GREENHECK G-090-VG | MEAT DEPARTMENT | ROOF | 300 | 0.30 | 1,131 | - | 0.03 | 1/10 | - | 115/1/60 | 30 | 1,2,3,4,5,6 |

1. CURB MOUNTED SPUN TYPE FAN
2. PROVIDE NEMA 3R DISCONNECT SWITCH.
3. MOTOR WITH THERMAL OVERLOADS
4. CONTROLLED BY A PROGRAMMABLE TIMER
5. SPEED CONTROLLER.
6. PROVIDE BACK-DRAFT DAMPER

| AIR DEVICE SCHEDULE | | | | | | | | | | | |
|---------------------|-----------|---|--------|---------|------|--------|--------|---------|-------|-----------|-----------|
| MARK | NECK SIZE | DIFFUSER FACE OR CEILING GRID SIZE (in) | MOUNT | | | DUTY | | | MFG. | MODEL NO. | REMARKS |
| | | | LAY IN | SURFACE | DUCT | SUPPLY | RETURN | EXHAUST | | | |
| EG-1 | 10"x10" | 12"x12" | - | X | X | - | - | X | TITUS | 50F | 1,3,4,5,6 |
| EG-2 | SEE PLANS | 24"X24" | X | - | - | X | - | - | TITUS | PAR | 1,2,3,6 |

1. TYPE AND CFM INDICATED ON PLANS. 4. HARD CEILING BORDER TYPE
2. MANUAL VOLUME DAMPER 5. OPPOSED BLADE DAMPER
3. COLOR OF DIFFUSERS TO MATCH CEILING. REFER TO ARCHITECTURAL DRAWINGS 6. SQUARE TO ROUND ADAPTER

GENERAL NOTES

- THE INSTALLATION SHALL COMPLY WITH ANY AND ALL REQUIREMENTS OF THE LEGALLY CONSTITUTED AUTHORITIES HAVING JURISDICTION.
- CONSTRUCTION TO CONFORM:
 - 2022 CALIFORNIA BUILDING CODE, WITH LOCAL AMENDMENTS
 - 2022 CALIFORNIA MECHANICAL CODE, WITH LOCAL AMENDMENTS
 - 2022 CALIFORNIA PLUMBING CODE, WITH LOCAL AMENDMENTS
 - 2022 CALIFORNIA ELECTRICAL CODE, WITH LOCAL AMENDMENTS
 - 2022 CALIFORNIA FIRE CODE, WITH LOCAL AMENDMENTS
 - 2022 CALIFORNIA ENERGY CODE, WITH LOCAL AMENDMENTS
 - 2022 CALIFORNIA ENERGY STANDARDS.
- PROVIDE ALL MATERIALS AND EQUIPMENT AND PERFORM ALL LABOR REQUIRED TO INSTALL COMPLETE AN OPERABLE MECHANICAL SYSTEMS AS INDICATED ON THE DRAWINGS.
- ALL INDICATED DIMENSIONS ARE APPROXIMATE AND ARE GIVEN FOR ESTIMATE PURPOSES ONLY. BEFORE PROCEEDING WITH THE WORK, THIS CONTRACTOR SHALL CAREFULLY CHECK AND VERIFY ALL DIMENSIONS, SIZES, REQUIRED CLEARANCES, AND SHALL ASSUME FULL RESPONSIBILITY FOR THE FITTING OF ALL EQUIPMENT AND MATERIALS HEREIN REQUIRED TO OTHER PARTS OF THE WORK AND TO THE WORK OF OTHER TRADES.
- CONTRACTOR SHALL COMPLY WITH ALL CONTRACT DOCUMENTS IN LAYING OUT HIS WORK AND EQUIPMENT OR SPECIALTIES REQUIRING READINGS, ADJUSTMENT, INSPECTION, REPAIRS, REMOVAL OR REPLACEMENT SHALL BE CONVENIENTLY AND ACCESSIBLY LOCATED WITH REFERENCE TO THE FINISHED BUILDING.
- DUCTWORK SHALL BE FABRICATED AND INSTALLED IN ACCORDANCE WITH CHAPTER 6 OF THE UMC, 2001 EDITION AND 1995 SMACNA EDITION.
- ALL BRACING OF DUCTS AND PIPING SHALL BE INSTALLED IN ACCORDANCE WITH "SMACNA" GUIDELINES AS FOR SEISMIC RESTRAINTS OF MECHANICAL AND PLUMBING SYSTEMS. WHERE BRACING DETAILS ARE NOT SHOWN ON DRAWINGS OR IN THE GUIDELINES, THE FIELD INSTALLATION SHALL BE TO THE APPROVAL OF THE ARCHITECT AND THE STRUCTURAL ENGINEER.
- ALL FRESH AIR INTAKES SHALL BE LOCATED A MINIMUM OF 10'-0" FROM ANY SANITARY VENT, EXHAUST FAN DISCHARGE AND FLUE OF OTHER FURNACES. WHEN NECESSARY EXTEND VENT OR PROVIDE ADDITIONAL FRESH AIR INTAKE DUCTWORK AS DIRECTED BY THE ENGINEER.
- THE INSTALLATION OF VALVES, THERMOMETERS, GAUGES, CLEANOUTS, DAMPERS, DUCT ACCESS DOORS OR OTHER INDICATING EQUIPMENT OR SPECIALTIES REQUIRING READING, ADJUSTMENT, INSPECTION, REPAIRS, REMOVAL OR REPLACEMENT SHALL BE CONVENIENTLY AND ACCESSIBLY LOCATED.
- WHERE ANCHORAGE DETAILS ARE NOT SHOWN ON THE DRAWINGS, THE FIELD INSTALLATION SHALL BE SUBJECT TO THE APPROVAL OF THE STRUCTURAL ENGINEER.
- THE SIZES, WEIGHTS AND CAPACITIES OF ALL EQUIPMENT SCHEDULES ON THE DRAWING HAVE BEEN CAREFULLY COMPUTED. SHOULD EQUAL ITEMS BUT DIFFERENT MANUFACTURERS BE SUBMITTED FOR APPROVAL, ALL SUCH SUBMITTALS SHALL INCLUDE 1/4" SCALE SHOP DRAWINGS SHOWING METHOD OF INSTALLATION. PROVIDE LOAD RATINGS AND SEISMIC CALCULATIONS AS APPROVED BY A REGISTERED STRUCTURAL ENGINEER WITH EACH SUBMITTAL.
- THE CONTRACTOR SHALL COORDINATE HIS WORK WITH ALL TRADES AT THE SITE. ANY COST TO INSTALL WORK TO ACCOMPLISH SAID COORDINATION WHICH DIFFERS FROM THE WORK AS SHOWN ON THE PLANS SHALL BE INCURRED BY THE CONTRACTOR. ANY DISCREPANCIES, AMBIGUITIES OR CONFLICTS SHALL BE BROUGHT TO THE ATTENTION OF THE ARCHITECT DURING BID TIME FOR CLARIFICATION. ANY SUCH CONFLICTS NOT CLARIFIED PRIOR TO BID SHALL BE SUBJECT TO THE INTERPRETATION OF THE ARCHITECT AT NO ADDITIONAL COST TO THE OWNER.
- AFTER ALL REQUIREMENTS OF THE SPECIFICATIONS AND/OR THE DRAWINGS HAVE BEEN FULLY COMPLETED, REPRESENTATIVES OF THE OWNER WILL INSPECT THE WORK. THE CONTRACTOR SHALL PROVIDE COMPETENT PERSONNEL TO DEMONSTRATE THE OPERATION OF ANY ITEM OR SYSTEM, TO THE FULL SATISFACTION OF EACH REPRESENTATIVE. FINAL ACCEPTANCE OF THE WORK WILL BE MADE BY THE OWNER AFTER RECEIPT OF APPROVAL AND RECOMMENDATION OF ACCEPTANCE FROM EACH REPRESENTATIVE.
- IT SHALL BE THE CONTRACTOR'S RESPONSIBILITY TO DO ALL CORING, SAW CUTTING, PATCHING AND REFINISHING OF EXISTING WALLS AND SURFACES WHEREVER IT IS NECESSARY FOR HIM TO PENETRATE FOR HIS WORK. ALL OPENING SHALL BE SEALED TO MEET THE FIRE RATING OF THE PARTICULAR WALL, FLOOR OR CEILING PENETRATED.
- WHEREVER A DISCREPANCY IN QUANTITY OR SIZE OF MECHANICAL EQUIPMENT MATERIAL ARISES ON THE DRAWINGS AND/OR SPECIFICATIONS, THE CONTRACTOR SHALL BE RESPONSIBLE FOR PROVIDING AND INSTALLING ALL MATERIAL AND SERVICES REQUIRED BY THE STRICTEST CONDITIONS NOTED ON DRAWINGS AND/OR IN THE SPECIFICATION TO ENSURE COMPLETE AND OPERABLE SYSTEMS AS REQUIRED BY THE OWNER AND ENGINEER.
- PENETRATION OF PIPES, CONDUITS, ETC., IN WALLS REQUIRING PROTECTED OPENING SHALL BE FIRE STOPPED. FIRE STOP MATERIAL SHALL BE A U.L. TESTED AND APPROVED ASSEMBLY APPROVED BY THE STATE FIRE MARSHALL.
- INSTALLATION INSTRUCTIONS FOR ALL LISTED EQUIPMENT SHALL BE MADE AVAILABLE TO THE BUILDING INSPECTOR AT THE TIME OF INSPECTION. (CMC 394.0)
- ROOFTOP UNITS IN COMBINATION OR GREATER THAN 2000 CFM DUCT DETECTORS AND AUTO SHUT OFF ARE REQUIRED.
- COORDINATE DUCT DETECTORS AND AUTO SHUT OFF WITH THE FIRE ALARM SYSTEM. IF APPLICABLE
- ALL UNITS SHALL BE SHUTDOWN GLOBALLY WHEN ANY OF THE SMOKE DETECTORS IS ACTIVATED.

MECHANICAL SYMBOLS

| SYMBOL & ABBREVIATION | DESCRIPTION |
|-----------------------|--|
| | SUPPLY AIR (RISE/DROP) |
| | RETURN AIR DUCT (RISE/DROP) |
| | EXHAUST AIR DUCT (RISE/DROP) |
| | CEILING DIFFUSER/SUPPLY REGISTER (ARROWHEAD REPRESENTS NUMBER OF THROW) (4-WAY TYPICAL IF NO ARROWS) |
| | RETURN REGISTER/GRILLE |
| | EXHAUST REGISTER/GRILLE |
| | RECTANGULAR DUCT ELBOW WITH TURNING VANES |
| | FLEXIBLE CONNECTION |
| | MANUAL VOLUME DAMPER |
| | FIRE DAMPER |
| | DUCT LINING (1" THICK UNLESS OTHERWISE NOTED) |
| | SINGLE LINE DUCT BRANCH TAKE-OFF |
| | DUCT TRANSITION (RECTANGULAR TO ROUND) |
| | FLEXIBLE DUCT (5'-0" MAXIMUM) |
| | PROGRAMMABLE THERMOSTAT |
| | TEMPERATURE SENSOR |
| | DUCT SMOKE DETECTOR |
| | FIRE DAMPER |
| | COMBINATION FIRE/SMOKE DAMPER |
| | ZONE DAMPER |
| | CONDENSATE DRAIN |
| | DIAMETER |
| | DOOR LOUVER |
| | DOOR UNDERCUT (3/4" MINIMUM) |
| | FURNISHED AND INSTALLED BY MECHANICAL CONTRACTOR |
| | FURNISHED AND INSTALLED BY ELECTRICAL CONTRACTOR |
| | FURNISHED BY MECHANICAL CONTRACTOR AND INSTALLED BY ELECTRICAL CONTRACTOR |
| | AIR DEVICE DESIGNATION NUMBER SIZE IN INCHES (N-NEW, E-EXISTING) AIR QUANTITY IN CFM |
| | MECHANICAL EQUIPMENT DESIGNATION DESIGNATED NUMBER |
| AFF | ABOVE FINISHED FLOOR |
| A/C, AC | AIR CONDITIONING |
| BDD | BACK DRAFT DAMPER |
| CB | CIRCUIT BREAKER |
| CLG. | CEILING |
| CONN. | CONNECT/CONNECTION |
| CONT. | CONTINUATION |
| CONTR. | CONTRACTOR |
| CFM | CUBIC FEET PER MINUTE |
| DET. | DETAIL |
| DISC. | DISCONNECT |
| EF | EXHAUST FAN |
| (E) | EXISTING |
| E.S.P. | EXTERNAL STATIC PRESSURE |
| FD | FIRE DAMPER |
| GA. | GAGE/GAUGE |
| GC | GENERAL CONTRACTOR |
| HVAC | HEATING, VENTILATING, AND AIR CONDITIONING |
| MCA | MINIMUM CIRCUIT AMPACITY |
| MFR. | MANUFACTURER |
| MECH. | MECHANICAL |
| MOCP | MAXIMUM OVERCURRENT PROTECTION |
| (N) | NEW |
| OA/OSA | OUTSIDE AIR |
| OBD | OPPOSED BLADE DAMPER |
| PH | PHASE |
| S/S | STAINLESS STEEL |
| SENS. | SENSIBLE |
| TEMP. | TEMPERATURE |
| TYP. | TYPICAL |
| UON | UNLESS OTHERWISE NOTED |
| V | VOLTS |

Reviewed for Code Compliance
NOV 18 2024
CSG CONSULTANTS, INC.

| SHEET INDEX | |
|-------------|--|
| SHEET NO. | DESCRIPTION |
| M-1 | HVAC LEGEND, GENERAL NOTES AND SCHEDULES |
| M-2 | HVAC FLOOR PLANS |
| M-3 | KITCHEN HOOD - T24 FORMS |
| M-4 | MECHANICAL - T24 FORMS |

| REV. DATE | NO. |
|---------------------|-----|
| PLAN CHECK 02/19/24 | 1 |



GAMA
DRAFTING & ENGINEERING
37625 SYCAMORE ST NEWARK, CA 94560
gamadrafting@gmail.com (510) 861-1319

REVISIONS

| NO. | DATE | DESCRIPTION |
|-----|----------|-------------|
| 1 | 02/19/24 | PLAN CHECK |

T.I. - NAMASTE PLAZA
415 MARY AVENUE
SUNNYVALE CA 94085

Date: 10/11/23

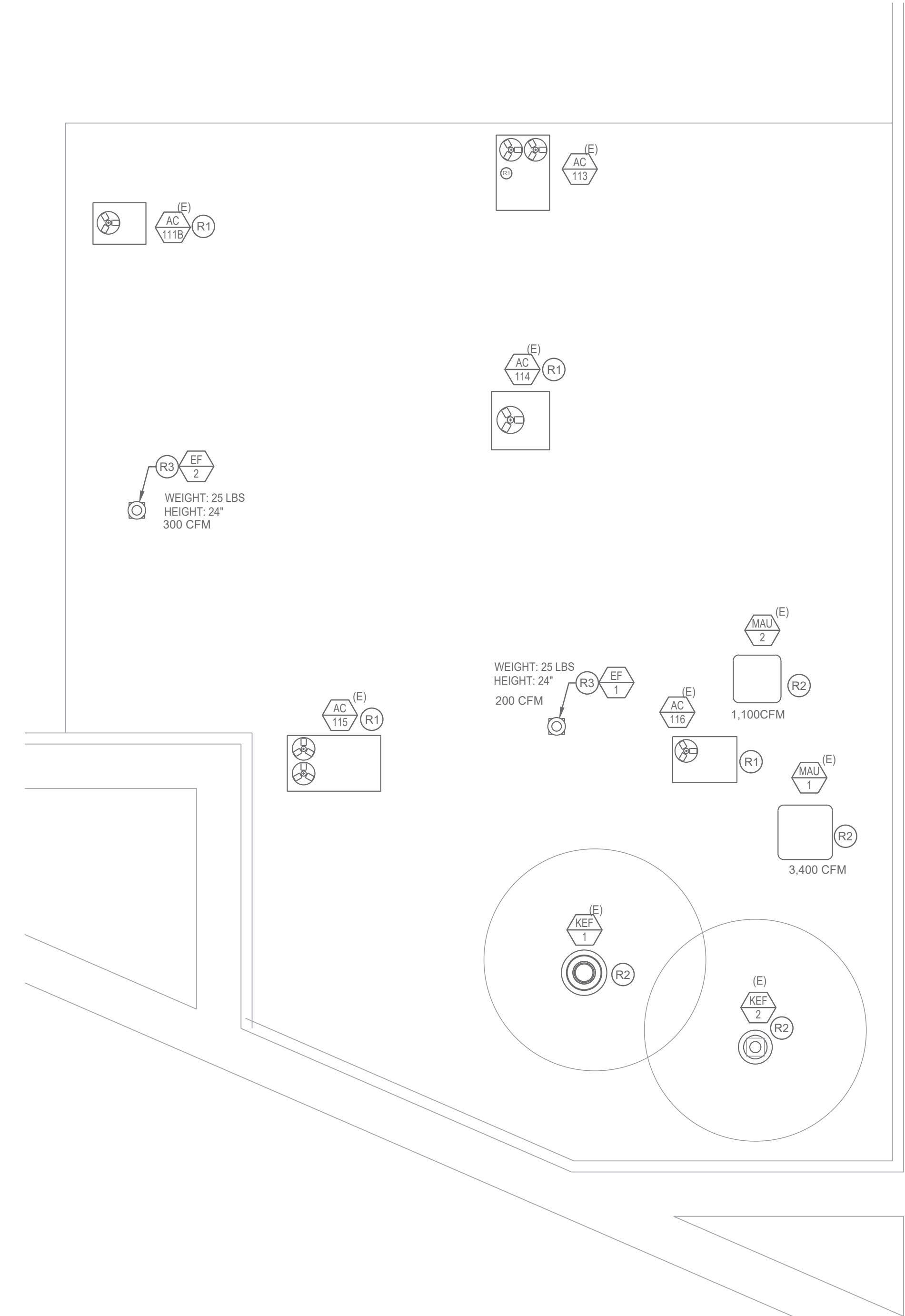
Drawn: HP

Sheet: M-1

Reviewed for Code Compliance
NOV 18 2024
CSG CONSULTANTS, INC.



GAMA
 DRAFTING & ENGINEERING
 37625 SYCAMORE ST NEWARK, CA 94660
 gamadrafting@gmail.com (510) 961-1319



GENERAL NOTES

1. TERMINATION OF THE GREASE EXHAUST FAN DUCT SYSTEM SHALL MEET ALL THE REQUIREMENTS OF SEC. 510.9, 2022 CALIFORNIA MECHANICAL CODE.
2. EXISTING ROOFTOP UNITS SHALL BE EQUIPPED WITH A SMOKE DETECTOR LOCATED IN THE MAIN SUPPLY AIR DUCT.
3. ALL AIR SUPPLYING UNITS SHALL BE SHUTDOWN GLOBALLY WHEN ANY OF THE SMOKE DETECTORS IS ACTIVATED.

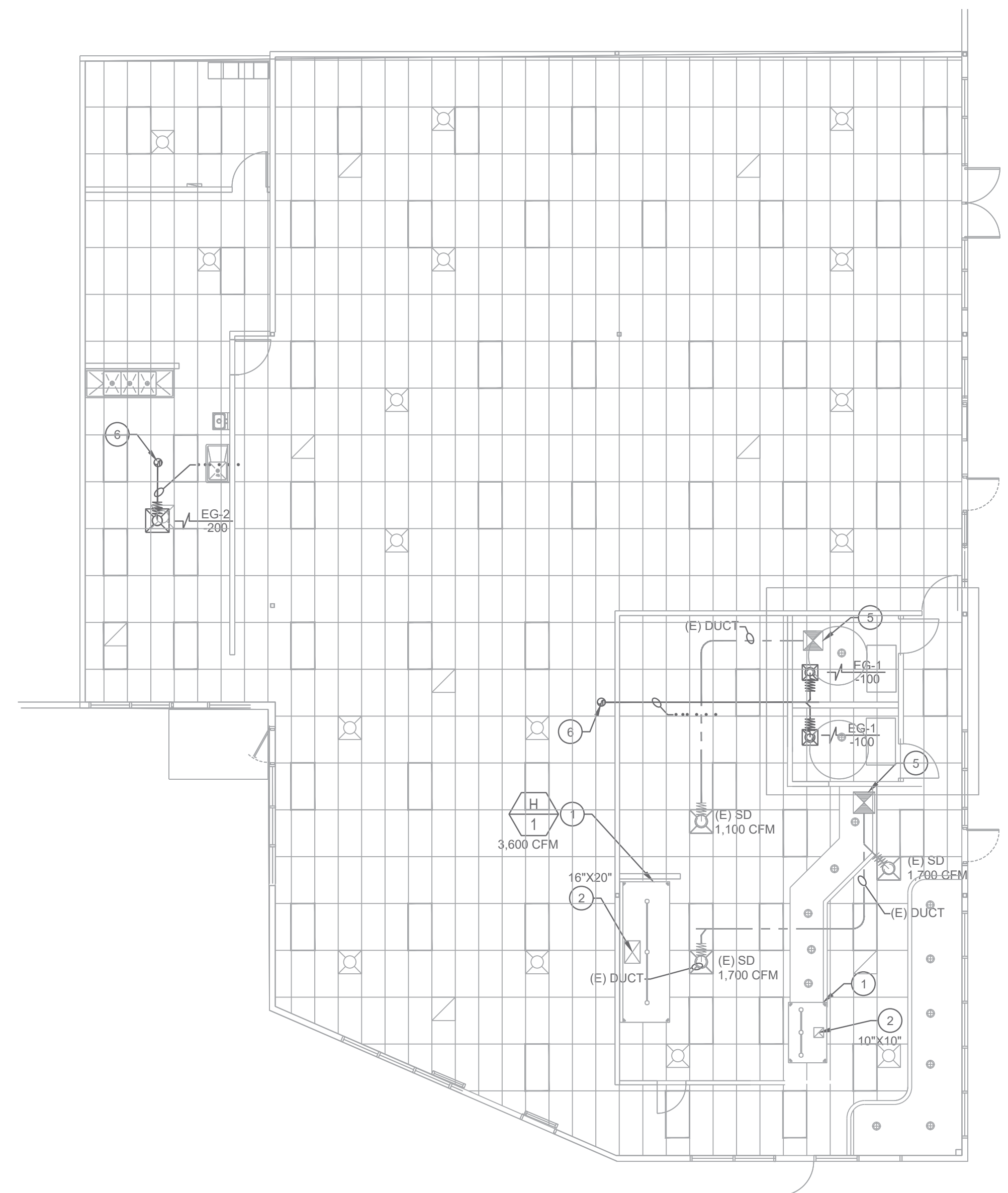
KEYED NOTES

- (R1) EXISTING ROOFTOP UNITS TO REMAIN. PROVIDE SMOKE DETECTOR.
- (R2) EXISTING KITCHEN VENTILATION EQUIPMENT. CLEAN AND LEAVE IN "LIKE NEW CONDITIONS".
- (R3) CURB MOUNTED, DOWN-BLAST CONFIGURATION, EXHAUST FAN. LOCATE FAN MINIMUM 10 FEET AWAY FROM ANY FRESH AIR INTAKE OPENING. SEE DETAIL 31M6.2.



MECHANICAL ROOF FLOOR PLAN

SCALE
 1/4" = 1'-0"
2



KEYED NOTES

- 1 EXISTING TYPE I HOOD, SUSPENDED FROM STRUCTURE ABOVE. CAPTIVE AIRE.
- 2 (E) GREASE DUCT UP THROUGH ROOF.
- 3 (E) MAKE-UP AIR CEILING GRILLE.
- 4 NOT USED.
- 5 NOT USED.
- 6 EF ON ROOF.



KITCHEN VENTILATION FLOOR PLAN

SCALE
 1/4" = 1'-0"
1

T.I. - NAMASTE PLAZA
 415 MARY AVENUE
 SUNNYVALE CA 94085

Date: 10/11/23

Drawn: HP

Sheet:

M-2