

EXHAUST FAN INFORMATION - JOB#7406279

FAN UNIT NO	TAG	QTY	FAN UNIT MODEL #	MANUFACTURER	CFM	ESP	RPM	MOTOR ENCL	HP	BHP	PHASE	VOLT	FLA	DISCHARGE VELOCITY	WEIGHT (LBS)	SONES
1		1	EADU180H	ECON-AIR	2700	1.200	1158	TEFC, PREMIUM	2.000	1.1520	3	208	7.3	624 FPM	199	13.9

MUA FAN INFORMATION - JOB#7406279

FAN UNIT NO	TAG	QTY	FAN UNIT MODEL #	BLOWER	HOUSING	MIN CFM	DESIGN CFM	ESP	RPM	MOTOR ENCL	HP	BHP	PHASE	VOLT	FLA	MCA	MDCP	WEIGHT (LBS)	SONES
2		1	EA-A1-15D	ISMF-1-MOD	A1	-	2160	0.500	1983	DDP, PREMIUM	1.500	1.2380	3	208	4.4	5.5A	15A	271	27.5

FAN OPTIONS

FAN UNIT NO	TAG	QTY	DESCRIPTION
1		1	GREASE BOX
		1	2 YEAR PARTS WARRANTY
2		1	SIZE 1 UNTEMPERED COMMERCIAL DOWN DISCHARGE FOR DIRECT DRIVE AHUS
		1	2 YEAR PARTS WARRANTY

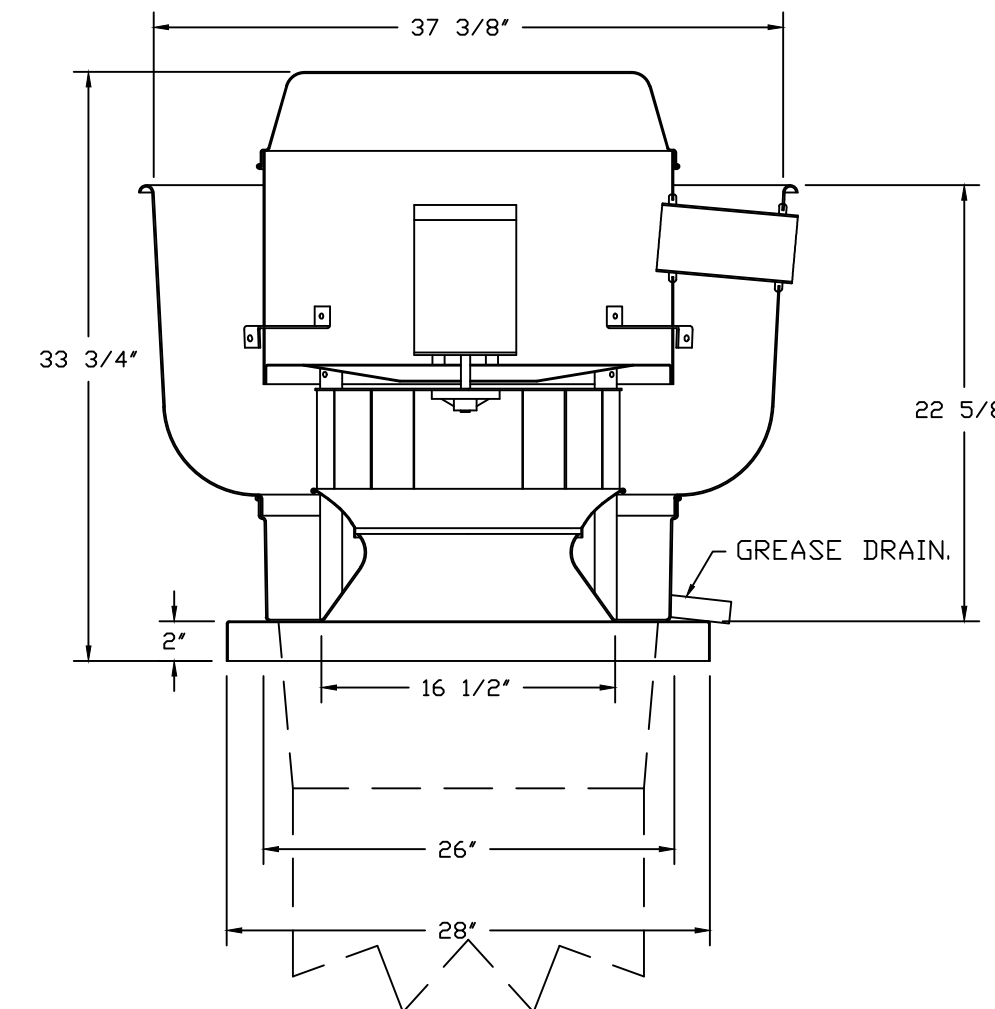
FAN ACCESSORIES

FAN UNIT NO	TAG	EXHAUST				SUPPLY			
		GREASE CUP	GRAVITY DAMPER	WALL MOUNT	SIDE DISCHARGE	GRAVITY DAMPER	MOTORIZED DAMPER	WALL MOUNT	
1		YES							

CURB ASSEMBLIES

NO	ON FAN	WEIGHT	ITEM	SIZE
1	# 1	52 LBS	CURB	26.500"W X 26.500"L X 24.000"H VENTED HINGED.
2	# 2	29 LBS	CURB	21.000"W X 21.000"L X 20.000"H.

FAN #1 EADU180H - EXHAUST FAN



FEATURES:

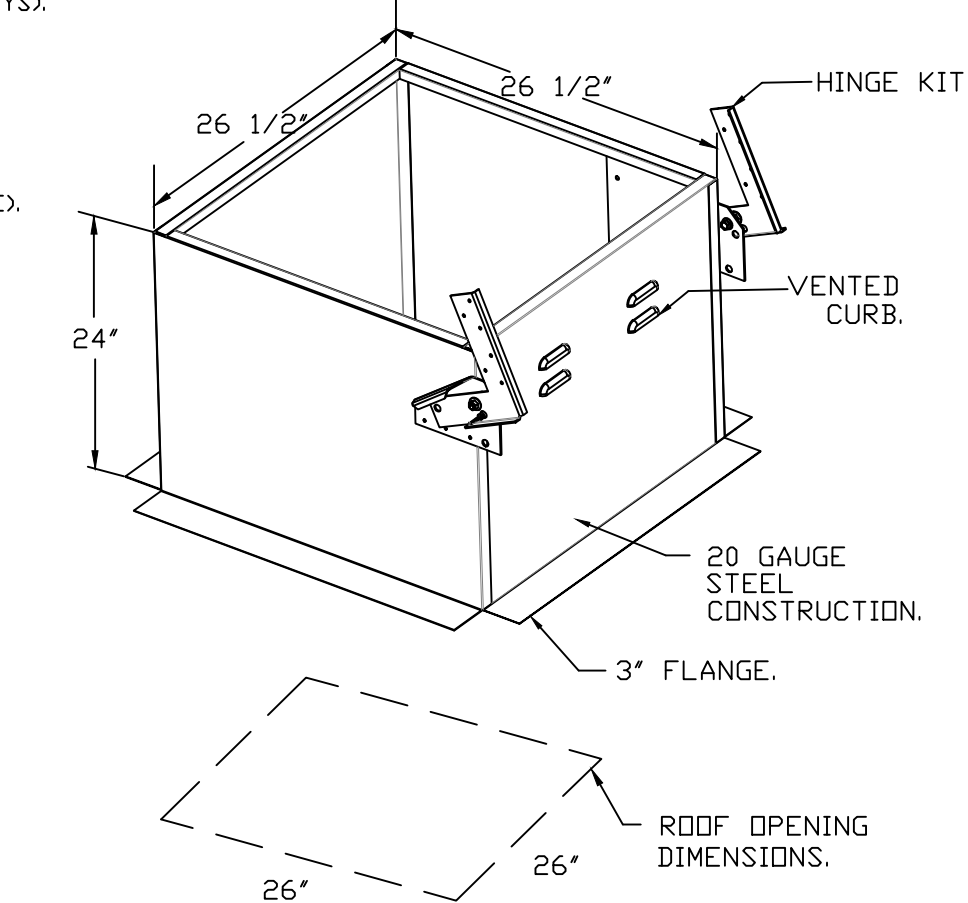
- DIRECT DRIVE CONSTRUCTION (NO BELTS/PULLEYS).
- ROOF MOUNTED FANS.
- RESTAURANT MODEL.
- UL705 AND UL762 AND ULC-S645
- VARIABLE SPEED CONTROL.
- INTERNAL WIRING.
- THERMAL OVERLOAD PROTECTION (SINGLE PHASE).
- HIGH HEAT OPERATION 300°F (149°C).
- GREASE CLASSIFICATION TESTING.
- NEMA 3R SAFETY DISCONNECT SWITCH.

NORMAL TEMPERATURE TEST
EXHAUST FAN MUST OPERATE CONTINUOUSLY WHILE EXHAUSTING AIR AT 300°F (149°C) UNTIL ALL FAN PARTS HAVE REACHED THERMAL EQUILIBRIUM, AND WITHOUT ANY DETRIMENTARY EFFECTS TO THE FAN WHICH WOULD CAUSE UNSAFE OPERATION.

ABNORMAL FLARE-UP TEST
EXHAUST FAN MUST OPERATE CONTINUOUSLY WHILE EXHAUSTING BURNING GREASE VAPORS AT 600°F (316°C) FOR A PERIOD OF 15 MINUTES WITHOUT THE FAN BECOMING DAMAGED TO ANY EXTENT THAT COULD CAUSE AN UNSAFE CONDITION.

- OPTIONS**
- GREASE BOX.
 - 2 YEAR PARTS WARRANTY.

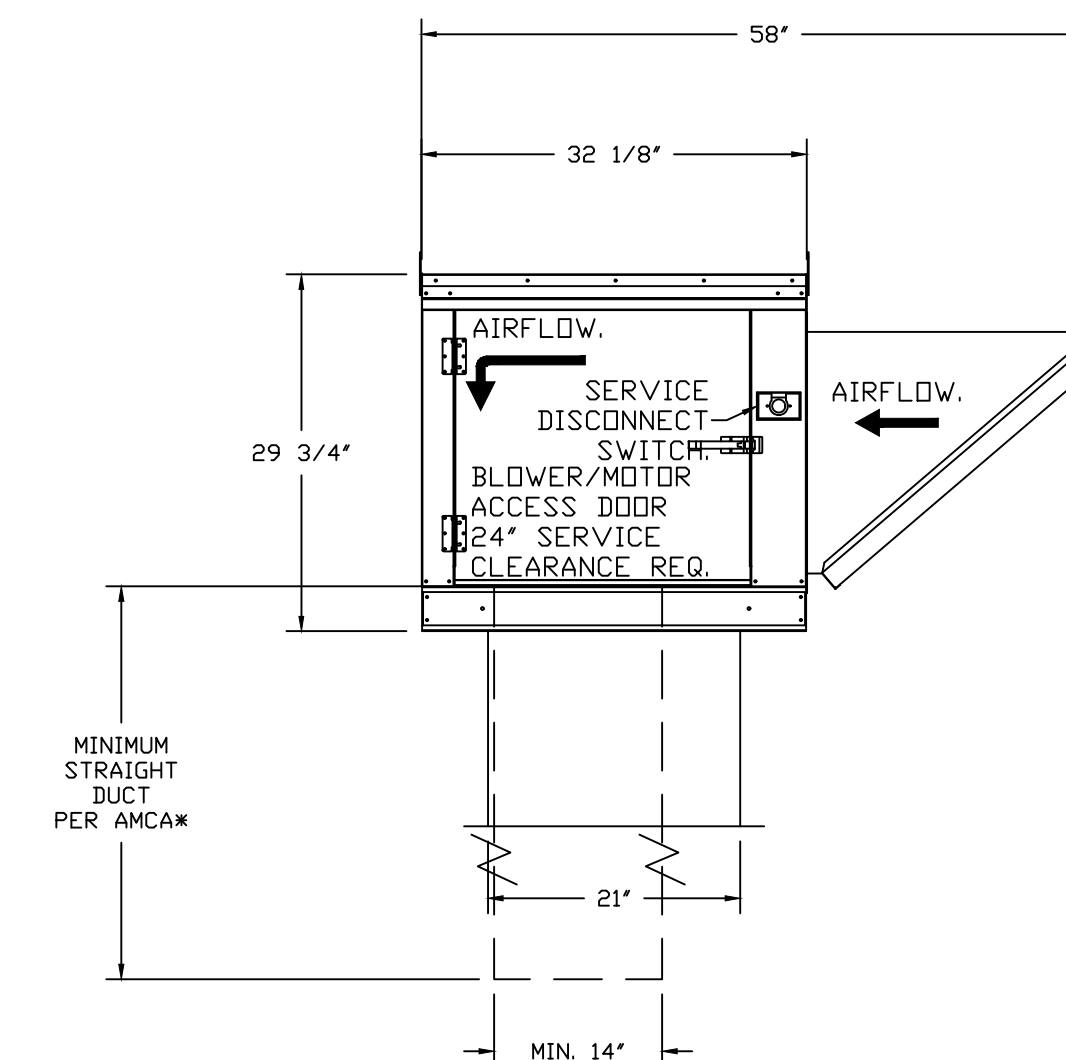
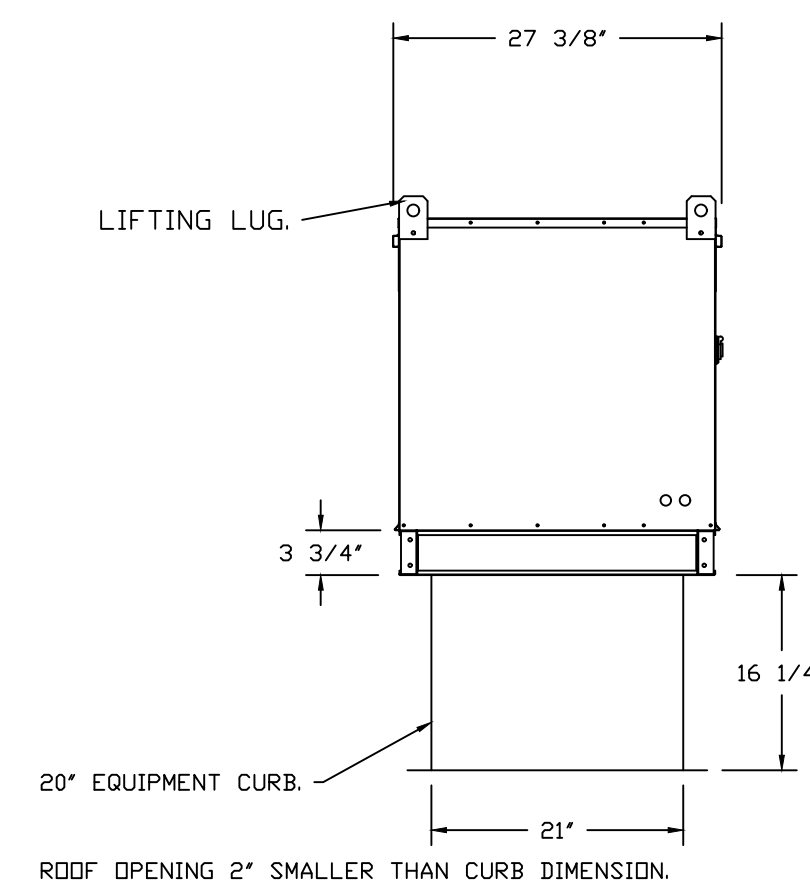
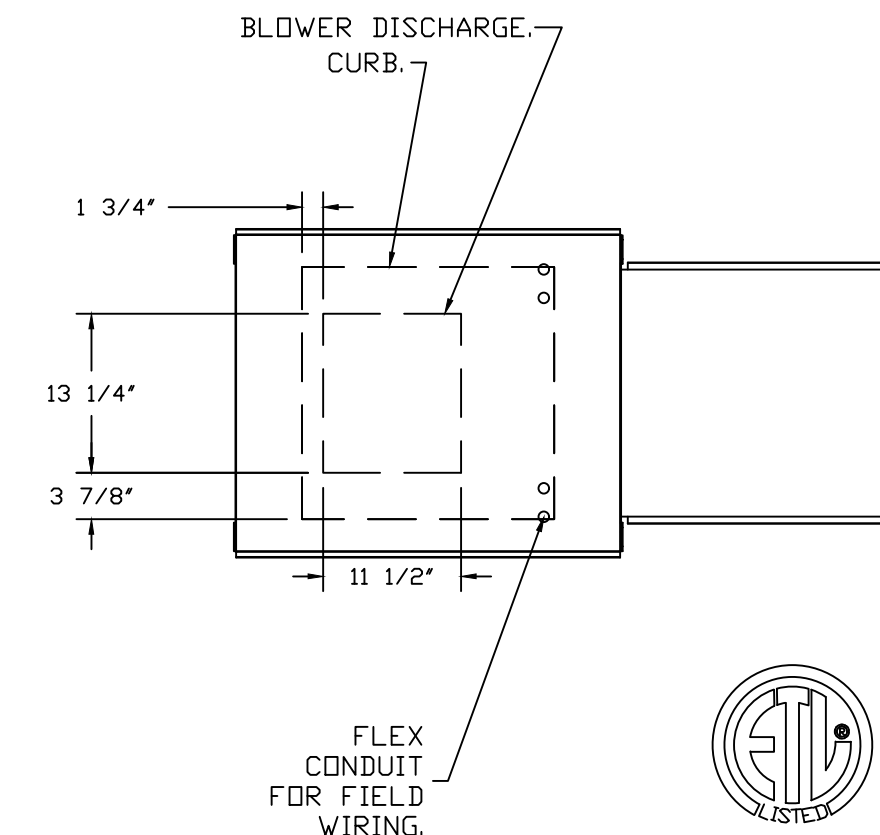
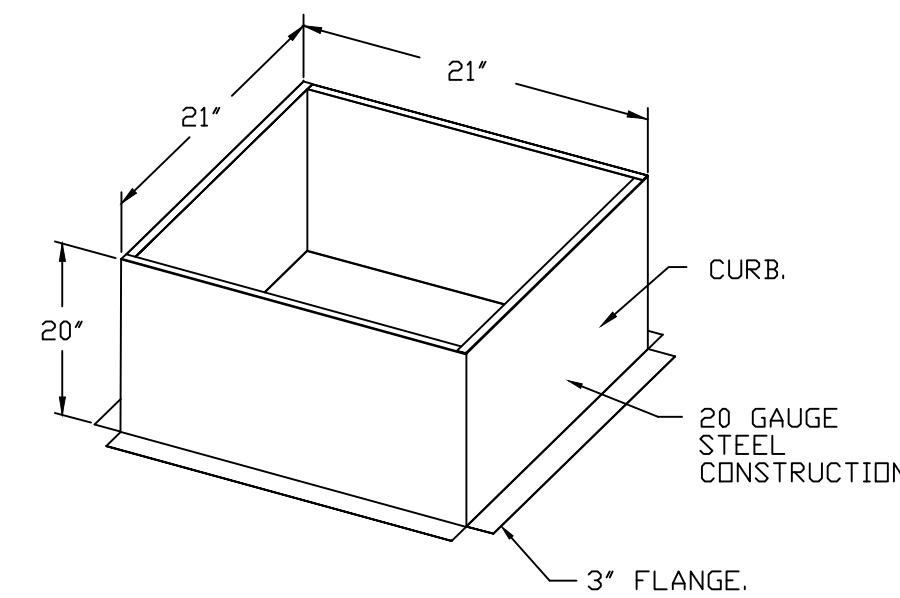
Install exhaust fan so the grease drain is on the opposite side away from the hinges. install the grease cup on the side of the roof curb (not on the fan base)



FAN #2 EA-A1-15D - SUPPLY FAN

1. UNTEMPERED SUPPLY UNIT WITH 15" MIXED FLOW DIRECT DRIVE FAN IN SIZE #1 HOUSING.
2. INTAKE HOOD WITH EZ FILTERS-LOW CFM.
3. DOWN DISCHARGE - AIR FLOW RIGHT -> LEFT.
4. DOWN DISCHARGE CONSTRUCTION FOR SIZE 1 UNTEMPERED DIRECT DRIVE AHUS.
5. HINGED DOUBLE WALL INSULATED DOOR ASSEMBLY (BURNER/BLOWER SECTION).
6. 2 YEAR PARTS WARRANTY.

*NOTE: SUPPLY DUCT MUST BE INSTALLED TO MEET SMACNA STANDARDS. A MINIMUM STRAIGHT DUCT LENGTH MUST BE MAINTAINED DOWNSTREAM OF UNIT DISCHARGE AS OUTLINED IN AMCA PUBLICATION 201. WHEN USING RECTANGULAR DUCTWORK, ELBOWS MUST BE RADIUS THROAT, RADIUS BACK WITH TURNING VANES. FLEXIBLE DUCTWORK AND SQUARE THROAT/SQUARE BACK ELBOWS SHOULD NOT BE USED. ANY TRANSITION AND/OR TURNS IN THE DUCTWORK WILL CAUSE SYSTEM EFFECT. SYSTEM EFFECT WILL DRASTICALLY INCREASE STATIC PRESSURE AND REDUCE AIRFLOW. DO NOT RELY ON UNIT TO SUPPORT DUCT IN ANY WAY. FAILURE TO PROPERLY SIZE DUCTWORK MAY CAUSE SYSTEM EFFECTS AND REDUCE PERFORMANCE OF THE EQUIPMENT. SUGGESTED STRAIGHT DUCT SIZE IS 14" x 14".



SYSTEM DESIGN VERIFICATION (SDV)

IF ORDERED, CAS SERVICE WILL PERFORM A SYSTEM DESIGN VERIFICATION (SDV) ONCE ALL EQUIPMENT HAS HAD A COMPLETE START UP PER THE OPERATION AND INSTALLATION MANUAL. TYPICALLY, THE SDV WILL BE PERFORMED AFTER ALL INSPECTIONS ARE COMPLETE.

ANY FIELD RELATED DISCREPANCIES THAT ARE DISCOVERED DURING THE SDV WILL BE BROUGHT TO THE ATTENTION OF THE GENERAL CONTRACTOR AND CORRESPONDING TRADES ON SITE. THESE ISSUES WILL BE DOCUMENTED AND FORWARDED TO THE APPROPRIATE SALES OFFICE. IF CAS SERVICE HAS TO

RESOLVE A DISCREPANCY THAT IS A FIELD ISSUE, THE GENERAL CONTRACTOR WILL BE NOTIFIED AND BILLED FOR THE WORK. SHOULD A RETURN TRIP BE REQUIRED DUE TO ANY FIELD RELATED DISCREPANCY THAT CANNOT BE RESOLVED DURING THE SDV, THERE WILL BE ADDITIONAL TRIP CHARGES.

DURING THE SDV, CAS SERVICE WILL ADDRESS ANY DISCREPANCY THAT IS THE FAULT OF THE MANUFACTURER. SHOULD A RETURN TRIP BE REQUIRED, THE GENERAL CONTRACTOR AND APPROPRIATE SALES OFFICE WILL BE NOTIFIED. THERE WILL BE NO ADDITIONAL CHARGES FOR MANUFACTURER DISCREPANCIES.

REFER TO FAN MANUALS REGARDING PROPER STARTUP AND INSTALLATION

CAPTIVEAIRE EQUIPMENT ON THESE SUBMITTALS IS OWNER PROVIDED

REVISIONS

DESCRIPTION	DATE

CAPTIVEAIRE
REGOFFICE
ADDRESS

WINGSTOP SALINAS CA #AA103 #4043
1598 NORTH SANBORN ROAD,
SUITE 200C3
SALINAS, CA, 93905

DATE: 3/14/2025

DWG.#: 7406489

DRAWN BY: WDM-45

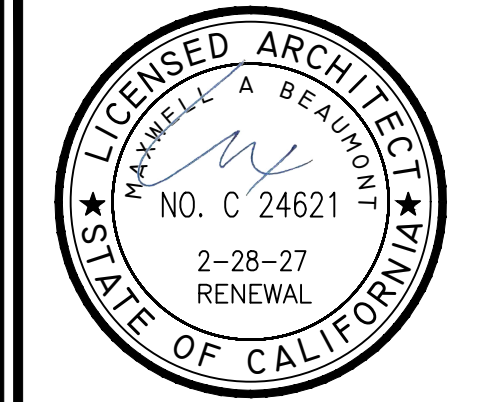
SCALE: 3/4" = 1'-0"

MASTER DRAWING

SHEET NO. 5

CONSULTANT:

ARCHITECT:
BEAUMONT & ASSOCIATES
MAXWELL A. BEAUMONT,
ARCHITECT
EMERYVILLE, CA
design@acute-consulting.com



CLIENT:



15505 WRIGHT BROTHERS DRIVE
ADDISON, TX 75001
TELEPHONE: (972) 686-6500
FAX: (972) 686-6502

DISCLAIMER:
THESE DRAWINGS, IDEAS, SPECIFICATIONS AND DESIGNS ARE EXCLUSIVE PROPERTY OF WINGSTOP RESTAURANTS, INC. NO PART OF THESE DRAWINGS MAY BE COPIED, REPRODUCED, OR OTHER STRUCTURES BUILT FROM SUCH WITHOUT THE WRITTEN CONSENT OF WINGSTOP RESTAURANTS, INC.

COPYRIGHT © 2013
WINGSTOP RESTAURANTS, INC.
ALL RIGHTS RESERVED.

PROJECT INFORMATION:

WINGSTOP
BORONDA PLAZA
1598 N. SANBORN ROAD, SUITE C
SALINAS, CA 93905
STORE GL#AA103

SEAL:

PROJECT NO.:
DRAWN BY: EAL
CHECKED BY:
ISSUE: DATE:
PERMIT & BID SET 03/14/2025

REVISION	DATE

PROJECT LOCATION:
SALINAS, CA

SHEET NUMBER / TITLE:
M H5
CAPTIVE AIRE HOOD DRAWINGS

Factory Built Double Wall Grease Duct Specification

Furnish double wall, factory built grease duct for use with Type I kitchen hoods, which conforms to the requirements of NFPA-96. Products shall be ETL listed to UL-1978 and UL-2221 for venting air and grease vapors from commercial cooking operation. Models DW-2R, 3R and 3Z are used for grease duct applications when installed in accordance with these instructions and National Fire Protection Association "NFPA 96", Standard for Ventilation Control and Fire Protection of Commercial Cooking Operations. Double wall grease ducts are listed for a continuous internal temperature of 500 degrees F and intermittent temperatures of 2000 degrees F.

The duct sections shall be constructed of an inner duct wall and an outer wall with insulation in between. The inner duct wall shall be constructed of .036 inch thick, 430 type stainless steel and be available in diameters 8" through 24". The outer wall shall be constructed of stainless steel at a minimum of .024 inch thickness. The duct, based on model number, shall include layers of Super Wool 607 Plus insulation between the inner and outer wall. Grease duct joints shall be held together by means of formed V clamps and sealed with 3M Fire Barrier 2000+. The duct wall assembly shall be tested and listed at 3/4" or zero inch clearance, according to classifications.

Classifications and Clearances

UL 2221: Standard for Fire Resistive Grease Duct Enclosure Assemblies. Chapter 7 of this standard references a test labeled Internal Fire Test. Section 7.1.1 references two installation conditions, Condition A and Condition B. Condition A represents all installation condition except for installation within non-ventilated combustible enclosures. Condition B represents installation within a non-ventilated combustible enclosure.

Model DW-3Z is classified under UL2221 (Test of Fire Resistive Duct Enclosure Assemblies) as an alternate to 2-Hr. fire resistive shaft enclosures with a minimum zero clearance to combustibles (sizes 8" to 24" diameter). Model 3Z is listed in accordance with the requirements for duct enclosure Condition A and B.

Model DW-3R is classified under UL2221 (Test of Fire Resistive Duct Enclosure Assemblies) as an alternate to 2-Hr. fire resistive shaft enclosures with a reduced clearance to combustibles (sizes 8" to 24" diameter). Model 3R is listed in accordance with the requirements for duct enclosure Condition B.

Model DW-2R is classified under UL2221 (Test of Fire Resistive Duct Enclosure Assemblies) as an alternate to 2-Hr. fire resistive shaft enclosures with a reduced clearance to combustibles (sizes 8" to 16" diameter). Model 2R is listed in accordance with the requirements for duct enclosure Condition B.

DUCT MODEL	INNER DIAMETER (ID)	OUTSIDE DIAMETER	CLEARANCE TO COMBUSTIBLES	CLEARANCE TO NON-COMBUSTIBLES
DW - 2R	8" - 16"	ID + 4	3/4"	0"
DW - 3R	8" - 24"	ID + 6	3/4"	0"
DW - 3Z	8" - 24"	ID + 6	0"	0"

*DW - 2R: 3/4" clearance to combustibles from the surface of the duct outer shell; zero inch clearance from combustibles from the tip of the outer V Band.

**DW - 3R: 3/4" clearance to combustibles from the surface of the duct outer shell; zero inch clearance from combustibles from the tip of the outer V Band.

Classifications and Clearances

Through floor fire stop support assembly are used to support duct sections that penetrate a fire resistant floor(s). The full support ring is installed under the double V band; the struts are connected to the support ring with supplied 5/16-18 hardware. Once the struts have been connected they are secured to the floor using appropriate type and size fasteners supplied by others. When duct systems penetrate a fire resistance rated floor, ceiling and/or a wall, a fire stop kit is used to retain the fire resistance rating on the floor and/or wall. The double wall grease duct (2R, 3R and 3Z) and the fire stop assemblies detailed below have achieved 2-hour ratings for integrity, insulation and stability. Testing was conducted in accordance with the applicable requirements UL 2221, Test of Fire Resistive Grease Duct Enclosure Assemblies.

DUCT MODEL	INNER DIAMETER	OUTER DIAMETER	SQUARE / ROUND OPENING MIN/MAX
DW - 2R	8"	12"	14" - 15"
DW - 2R	10"	14"	16" - 17"
DW - 2R	12"	16"	18" - 19"
DW - 2R	14"	18"	20" - 21"
DW - 2R	16"	20"	22" - 23"
DW - 3R / 3Z	8"	14"	16" - 17"
DW - 3R / 3Z	10"	16"	18" - 19"
DW - 3R / 3Z	12"	18"	20" - 21"
DW - 3R / 3Z	14"	20"	22" - 23"
DW - 3R / 3Z	16"	22"	24" - 25"
DW - 3R / 3Z	18"	24"	26" - 27"
DW - 3R / 3Z	20"	26"	28" - 29"
DW - 3R / 3Z	24"	30"	32" - 33"

Double Wall Grease Duct shall be installed in accordance with the manufacturer's "Installation, Operation and Maintenance Manual," ETL listing, state codes and local codes. Fans shall be supported independently from the grease duct sections. Protect grease duct from twisting or movement caused by fan torque or vibration.

Additional Information Available

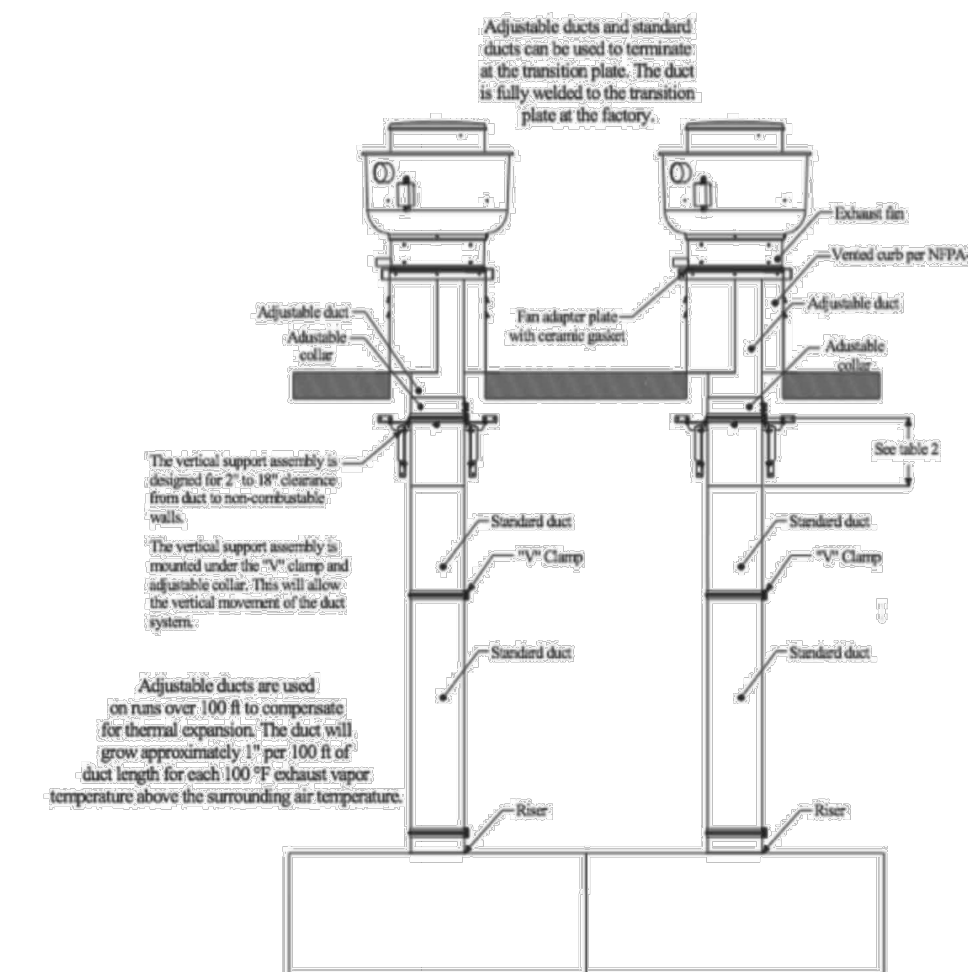
Operation, Installation, and Maintenance Manual

Copy of the manual is sent with every duct order from our manufacturing facility. Additional copies, if needed, are available for download at: <https://www.captiveaire.com/CATALOGCONTENT/DUCTWORK/INSTALLATION.ASP?catId=308&Model=GREASE+DUCT> Available also at the link above are recommendations for vertical and guy line support guides.

Grease Duct Design Guide

The Grease Duct Design Guide gives specifics for all parts available for order including Elbows, Straight Pieces, etc. Formulas and other information to calculate static pressure through a pre-engineered system is also available. Design Guide is available for download at <https://www.captiveaire.com/catalog/genpart/Catalog.asp?catId=306> or as a hard copy from your local CaptiveAire sales office.

Sample Duct Drawing



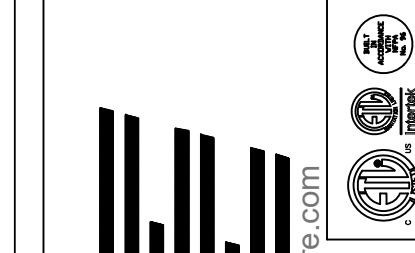
Certifications

The DW Series has been certified by ITS. This certification mark indicates that the product has been tested to and has met the minimum requirements of a widely recognized (consensus) U.S. and Canadian products safety standard, that the manufacturing site has been audited, and that the applicant has agreed to a program of periodic factory follow-up inspections to verify continued performance.

Model Double Wall Series is ETL Listed and complies with UL Listings

REVISIONS

DESCRIPTION	DATE



15505 WRIGHT BROTHERS DRIVE
ADDISON, TX 75001
TELEPHONE: (972) 686-6500
FAX: (972) 686-6502

DISCLAIMER:
THESE DRAWINGS, IDEAS, SPECIFICATIONS AND DESIGNS ARE EXCLUSIVE PROPERTY OF WINGSTOP RESTAURANTS, INC. NO PART OF THESE DRAWINGS MAY BE COPIED, REPRODUCED, OR OTHER STRUCTURES BUILT FROM SUCH WITHOUT THE WRITTEN CONSENT OF WINGSTOP RESTAURANTS, INC.

COPYRIGHT © 2013 WINGSTOP RESTAURANTS, INC. ALL RIGHTS RESERVED

PROJECT INFORMATION:

WING-STOP
BORONDA PLAZA
1598 N. SANBORN ROAD, SUITE C
SALINAS, CA 93905
STORE GL#AA103

WINGSTOP SALINAS CA #AA103 #4043
1598 NORTH SANBORN ROAD,
SUITE 200C3
SALINAS, CA, 93905

DATE: 3/14/2025

DWG.#: 7406489

DRAWN BY: WDM-45

SCALE: 3/4" = 1'-0"

MASTER DRAWING

WRI-TRAD_v102 SPB 2025.03

PROJECT LOCATION:
SALINAS, CA

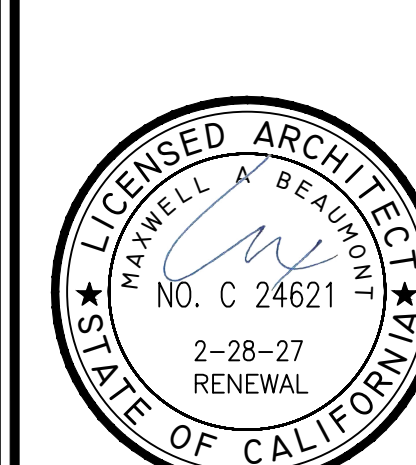
SHEET NUMBER / TITLE:
M H6

SHEET NO. 5

CAPTIVE AIRE HOOD DRAWINGS

CONSULTANT:

ARCHITECT:
BEAUMONT & ASSOCIATES
MAXWELL A. BEAUMONT,
ARCHITECT
EMERYVILLE, CA
design@acute-consulting.com



15505 WRIGHT BROTHERS DRIVE
ADDISON, TX 75001
TELEPHONE: (972) 686-6500
FAX: (972) 686-6502

DISCLAIMER:
THESE DRAWINGS, IDEAS, SPECIFICATIONS AND DESIGNS ARE EXCLUSIVE PROPERTY OF WINGSTOP RESTAURANTS, INC. NO PART OF THESE DRAWINGS MAY BE COPIED, REPRODUCED, OR OTHER STRUCTURES BUILT FROM SUCH WITHOUT THE WRITTEN CONSENT OF WINGSTOP RESTAURANTS, INC.

COPYRIGHT © 2013 WINGSTOP RESTAURANTS, INC. ALL RIGHTS RESERVED

PROJECT INFORMATION:

WING-STOP
BORONDA PLAZA
1598 N. SANBORN ROAD, SUITE C
SALINAS, CA 93905
STORE GL#AA103

WINGSTOP SALINAS CA #AA103 #4043
1598 NORTH SANBORN ROAD,
SUITE 200C3
SALINAS, CA, 93905

DATE: 3/14/2025

DWG.#: 7406489

DRAWN BY: WDM-45

SCALE: 3/4" = 1'-0"

MASTER DRAWING

WRI-TRAD_v102 SPB 2025.03

PROJECT LOCATION:
SALINAS, CA

SHEET NUMBER / TITLE:
M H6

SHEET NO. 5

CAPTIVE AIRE HOOD DRAWINGS