

Report By:

National TAB
1329 E. KEMPER ROAD
SUITE 4210
CINCINNATI, OH 45246



Report: TAB Report
Function: Test, Adjust, & Balance
Date: 10/30/2025
Completed By: National TAB

PROJECT

10-20-25 WAWA #8084 SPRINGFEILD, PA

675 BALTIMORE PIKE

SPRINGFIELD, PA 19064

Client

Wawa
260 West Baltimore Pike

Wawa, PA 19063

National TAB

Project: 10-20-25 WAWA #8084 SPRINGFEILD, PA

Table Of Contents

Section	Page #
Summary	3
Issue Data	4
Balance Schedule	6
Checklist Data	7
AHU/RTU	18
FAN - Exhaust	25
GRD Layout	30



National TAB

Project: 10-20-25 WAWA #8084 SPRINGFEILD, PA
Function: Test, Adjust, & Balance

Project Summary

Project Summary

The summary below provides a quick understanding of our scope of work and general testing procedures. Enclosed in the report is further detail about your building performance including recommendations, asset data, and pictures. Our focus is to work with the trades to remedy any issues or deficiencies during the actual field balancing and not after the balancing has occurred to achieve a positive environment and outcome. The level of success is determined by the availability of the trades, possible parts needed, or time constraints.

RTU's (Roof Top Units) w/ Diffusers

Each of the RTU's were measured at their terminal devices or via traverse to establish a total flow for that unit. Each RTU was adjusted to within tolerance of the engineer's design flow. Each outlet was then adjusted to within tolerance of the design flow. Outside air was measured by reading the intake air opening with a velocity grid and multiplying by the free area. The outside air damper was adjusted until the airflow was within the design requirements. Any equipment that fell outside of that tolerance is noted throughout the report.

General Exhaust Fans w/ Grilles

The general exhaust fans were measured by reading each air device with a flow hood. The total airflow for each fan is equivalent to the sum of these readings. Fan speed was then adjusted so that the airflow was within tolerance of design. Each terminal device was balanced to within tolerance of the design volume using the installed volume dampers. Any equipment that fell outside of this tolerance is noted throughout the report.

Ceiling Exhaust Fans

The ceiling exhaust fans were measured using a flow hood. If speed adjustment was provided, the fan speed was adjusted to within design tolerance. Any equipment that fell outside of this tolerance is noted throughout the report.

Final Building Tests

After completing the test and balance the final building pressure was measured. It was confirmed that the building pressure fell within acceptable tolerances and that the pressure measurement coincides with the actual and design net airflow. Any deviations from these standards are noted throughout the report

Issue List

- RTU-1 Missing Return Grille and Grille out of place

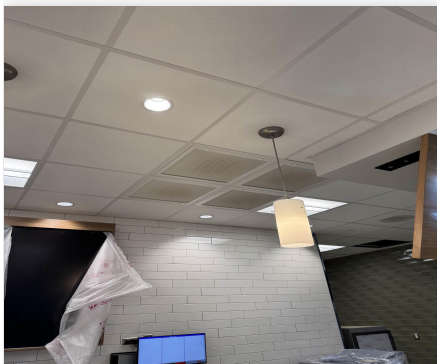


10-20-25 WAWA #8084 SPRINGFEILD, PA

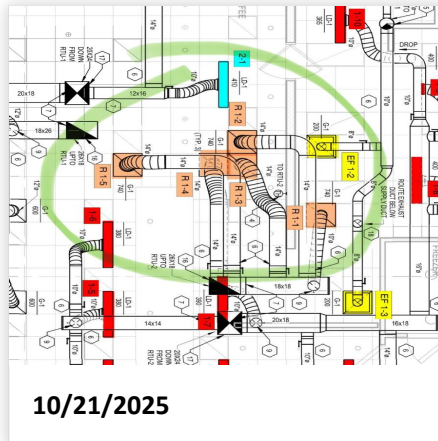
Project Issue Information

Issue Name : RTU-1 Missing Return Grille and Grille out of place
Description : The return grilles for RTU-1 do not match design. There is one grille missing, and another not placed where intended by design. Recommend adding the the missing grille and organizing the grilles within planned design.
Created By : National TAB **Assigned To :** National TAB - Will Turnbough
Status : Open
Priority : Medium **Asset Tag :**
Originated Date : 10/21/2025 - Ryan Ash - National TAB

Project Issue File Details



10/21/2025



10/21/2025

AIR BALANCE SCHEDULE

UNIT	AREA SERVED	HVAC SUPPLY		HVAC RETURN		HVAC OUTDOOR		OA %		HOOD MAKE-UP		HOOD EXHAUST		GENERAL EXH.	
		DESIGN	ACTUAL	DESIGN	ACTUAL	DESIGN	ACTUAL	DESIGN	ACTUAL	DESIGN	ACTUAL	DESIGN	ACTUAL	DESIGN	ACTUAL
RTU-1	CORE	4000	4124	3600	3732	400	392	10.0%	9.5%						
RTU-2	DELI	4000	3998	3700	3695	300	303	7.5%	7.6%						
RTU-3	RETAIL	3000	3117	2700	2809	300	308	10.0%	9.9%						
EF-1	HOOD FAN											500	520		
EF-2	RESTROOM													200	201
EF-3	METER ROOM													60	62
TOTALS		11000	11239	10000	10236	1000	1003			0	0	500	520	260	263

NET BUILDING AIRFLOW CALCULATION

TOTALS	DESIGN	ACTUAL
TOTAL OA	1000	1003
TOTAL EXHAUST	760	783
NET AIRFLOW	240	220

DOOR TESTED	BUILDING PRESSURE MEASUREMENTS (IN. H2O)
FRONT	0.0045
SIDE	0.0018
REAR	0.0045
AVERAGE	0.0036

FINAL CHECKS

- ACTUAL NET AIRFLOW COINCIDES WITH DESIGN: ✓

- MEASURED PRESSURES COINCIDES WITH ACTUAL NET AIRFLOW: ✓

- PRESSURE FALLS WITHIN IMC TOLERANCE OF +/-0.02" W.C. ✓

NOTES:

CheckList List

- 01: RTU's/AHU's
- 02: LENNOX SETUP PARAMETERS
- 03: SENSOR WIRING (LENNOX)
- 04: EF'S
- 05: CLOSEOUT CHECKS



10-20-25 WAWA #8084 SPRINGFEILD, PA

CheckList Information

Name :	01: RTU's/AHU's	Status :	Completed
Assigned Organization :	National TAB	Asset :	
Requesting Organization :	National TAB		
Created Date :	10/15/2025 - Tyce Fox - National TAB		
Completed Date :	10/21/2025 - Ryan Ash - National TAB		

CheckList Item Details

RTU's/AHU's

All diffusers and grilles are installed and match design?	Pass
--	------

Comment:

Clean filters installed?	Pass
---------------------------------	------

Comment:

Economizers are assembled and functional?	Pass
--	------

Comment:

Motors are all operating below the FLA rating?	Pass
---	------

Comment:

Are belts tight?	N/A
-------------------------	-----

Comment:

If direct drive unit is the speed controller working?	Pass
--	------

Comment:

Is gas piping installed and valves turned on?	Pass
--	------

Comment:

Condensate drains are installed?

Pass

Comment:

Unit free of noticeable noise and vibration

Pass

Comment:

Final outside air damper position is marked with permanent marker?

Pass

Comment:

No alarms present?

Pass

Comment:

Any noticeable duct leakage?

Pass

Comment:

Total supply and OA flows are balanced within +/-5% and supply & return diffusers within +/-10%?

Pass

Comment:

Adjust side wall diffusers on spiral duct that blow towards the coffee island drop-in to prevent issues with it staying at temperature. Fan out of the deflector blades or reduce airflow as necessary to prevent drafting.

Pass

Comment:

IN TEST MODE, TEST THE FOLLOWING:

Cooling mode is operational? Record EAT/LAT for each unit:

Pass

Comment:

RTU-1 EAT:72F/LAT:52F RTU-2 EAT:68F/LAT:50F RTU-3 EAT:72F/LAT:51F

Heating mode is operational? Record EAT/LAT for each unit:

Pass

Comment:

RTU-1 EAT:72F/LAT:82F RTU-2 N/A RTU-3 EAT:70F/LAT:85F

Dehumidification mode is operational? (Feel dehumidification coil with your hand. Is it hot?) Record EAT/LAT for each unit:

Pass

Comment:

RTU-1 EAT:73F/LAT:68F RTU-2 EAT:66F/LAT:53F RTU-3 EAT:71F/LAT:54F



10-20-25 WAWA #8084 SPRINGFEILD, PA

CheckList Information

Name : 02: LENNOX SETUP PARAMETERS **Status :** Completed
Assigned Organization : National TAB **Asset :**
Requesting Organization : National TAB
Created Date : 10/15/2025 - Tyce Fox - National TAB
Completed Date : 10/21/2025 - Ryan Ash - National TAB

CheckList Item Details

UNIT ID CONFIGURATIONS

BACNET CONFIGURATION: GO TO SETTINGS>GENERAL>CONFIGURATION ID1 POSITION 5 SET TO "N". Pass

Comment:

NETWORK CONFIGURATION: GO TO SETUP>NETWORK INTEGRATION, SET TO BACNET IP Pass

Comment:

CONTROL MODE: SET CONTROL MODE TO ROOM SENSOR: CO2, TEMP & HUMIDITY (PER UNIT, AS NEEDED). Pass

Comment:

INDIVIDUAL PARAMETER CONFIGURATIONS (MECHANICAL CONTRACTOR TO DEFINE / AS APPLICABLE):

PARAMETER 105 DEHUMID MODE: 7 NO CONDITIONS Pass

Comment:

PARAMETER 106 DEHUMID SETPOINT: 50, THIS IS A CENTERED SET POINT (+/-) Yes

Comment:

PARAMETER 107 DEHUMID DEADBAND: 3 (DEFAULT) THIS IS THE ACTUAL +/- VALUE Pass

Comment:

PARAMETER 117 CO2 DAMPER MAX OPEN: 50%

Pass

Comment:

PARAMETER 118 CO2 START OPEN PPM: 1500

Pass

Comment:

PARAMETER 119 CO2 MAX OPEN PPM: 1500

Pass

Comment:

PARAMETER 137 OCCHET SET POINT: 68 (BACK UP)

Pass

Comment:

PARAMETER 131 SET TO THE SAME % AS THE MINMIUM OA DAMPER SETPOINT

Pass

Comment:

PARAMETER 139 OCC COOLING SET POINT: 72 (BACK UP)

Pass

Comment:

PARAMETER 154 OCC BLOWER MODE: ON-CONTINUOUS 1

Pass

Comment:

CFM VALUES / MSAV FAN SPEEDS (AIR BALANCER TO DEFINE / IF APPLICABLE):

OA DAMPER SET TO SAME POSITION IN ALL FAN SPEEDS?

Pass

Comment:

ALL FAN SPEEDS SET TO THE SAME CFM VALUE (ENTER SETPOINTS BELOW)

Pass

Comment:

RTU-1 80% RTU-2 82% RTU-3 65%

HEAT CFM VALUE: PER THE HVAC SCHEDULE

Pass

Comment:

RTU-1 21% RTU-2 18% RTU-3 13%

HIGH COOL CFM VALUE: THE HIGH COOL CFM VALUE

Pass

Comment:

LOW COOL CFM VALUE: MATCH THE HIGH COOL CFM VALUE

Pass

Comment:

VENTILATION CFM VALUE: MATCH THE HIGH COOL CFM VALUE

Pass

Comment:



10-20-25 WAWA #8084 SPRINGFEILD, PA

CheckList Information

Name : 03: SENSOR WIRING (LENNOX) **Status :** Completed

Assigned Organization : National TAB **Asset :**

Requesting Organization : National TAB

Created Date : 10/15/2025 - Tyce Fox - National TAB

Completed Date : 10/21/2025 - Ryan Ash - National TAB

CheckList Item Details

COMBINATION TEMPERATURE/HUMIDITY SENSOR

Sensors are installed where shown on the drawing? Pass

Comment:

2 conductor shielded cable has one wire landed to Vin, one to GND, and the shield wire is not connected. Pass

Comment:

For second shielded cable, one wire is landed to Vout and the shield wire is not connected. Pass

Comment:

Verify that the CORE or Prodigy controller is sensing a relative humidity (record the reading) Pass

Comment:

RTU-1 34% RTU-2 33% RTU-3 34%



10-20-25 WAWA #8084 SPRINGFEILD, PA

CheckList Information

Name : 04: EF'S **Status :** Completed

Assigned Organization : National TAB **Asset :**

Requesting Organization : National TAB

Created Date : 10/15/2025 - Tyce Fox - National TAB

Completed Date : 10/21/2025 - Ryan Ash - National TAB

CheckList Item Details

EF's

Rotation is correct?	Pass
----------------------	------

Comment:

Belts are tight (if applicable)?	N/A
----------------------------------	-----

Comment:

Speed controller installed and functional (if applicable)?	Pass
--	------

Comment:

There is no major leakage around base of fan?	Pass
---	------

Comment:

Is the motor operating below the motor FLA rating?	Pass
--	------

Comment:

Back draft damper installed and can it fully open?	Pass
--	------

Comment:

Unit free of noticeable noise and vibration?	Pass
--	------

Comment:

Total exhaust flow balanced within +/-5% and grilles are within +/-10%?

Pass

Comment:



10-20-25 WAWA #8084 SPRINGFEILD, PA

CheckList Information

Name : 05: CLOSEOUT CHECKS **Status :** Completed

Assigned Organization : National TAB **Asset :**

Requesting Organization : National TAB

Created Date : 10/15/2025 - Tyce Fox - National TAB

Completed Date : 10/21/2025 - Ryan Ash - National TAB

CheckList Item Details

SPACE COMFORT

Is space free of drafting? Pass

Comment:

Is space comfortable in all areas? Pass

Comment:

Is the space free of ventilation noise? Pass

Comment:

BUILDING PRESSURE

Do actual net building airflow, design net building airflow, and pressure coincide? If not why? (All three should either be positive or negative) Pass

Comment:

FRONT: 0.0045" BACK: 0.0045" SIDE: 0.0018"

National TAB

Project: 10-20-25 WAWA #8084 SPRINGFEILD, PA

System/Unit: AHU/RTU



Asset: RTU1

AREA: CORE

Unit Data		
	Design	Actual
MFG	LENNOX ENLIGHT	LENNOX ENLIGHT
Serial Num	-	5625D02344
Model Num	LGT120H4E	LGT120H4E
Type	RTU	RTU
Configuration	VERTICAL	VERTICAL
Num OA Filters 1	-	2
OA Filter Size 1	-	14X23
Num Final Filter 1	-	4
Final Filter Size 1	-	20X25X2

Motor Data		
	Design	Actual
Motor MFG	-	EBMPAPST
Frame	-	NL
Horsepower	3.75	3.8
Motor Rpm	1780	1780
Phase	3	3
Rated Voltage	208	200
Rated Amperage	8.0	8.0

Test Data		
	Design	Actual
SF CFM	4000	4124
SF RPM	-	1424
RA CFM	3600	3732
OA CFM	400	392
RL Voltage	-	215.1/214.4/215.0
RL Amperage	-	4.5/4.5/4.4
SF Rotation	-	CW
SF System SetPt	-	80%
RA Damper Position	-	MECHANICAL LINKAGE
Min OA Damper Position	-	21%
Min OA Damper Type	-	ECONOMIZER

Performance Data		
	Design	Actual
MA Plenum SP	-	-0.42"
Fan Suction SP	-	-0.97"
Fan Discharge SP	-	0.68"
Total ESP	0.5"	1.10"
Fan Total SP	-	1.65"

General	
	Actual
Fan Rotation Correct	YES
Unit Filters Clean	YES
Condensate Drain Installed	YES

Completed By: Ryan Ash on 10/21/2025

Notes:
[1] RTU-1 on the return side is missing a Grille and one Grille is out of place. See Issue.

Written By: Ryan Ash on 10/21/2025

National TAB

Project:10-20-25 WAWA #8084 SPRINGFEILD, PA

AHU/RTU



Diffuser Supply (GRD)

RTU1/CORE

Asset									
Asset Name	Location	Type	Size	DESIGN CFM	AK	CFM(1)	CFM(2)	FINAL CFM	% to design
SGRD1	ELECTRICAL	CD1	12"	550	1	661	628	567	103.1
SGRD2	FOOD SERVICE	LD1	10"	365	1	423	402	378	103.6
SGRD3	FOOD SERVICE	LD1	10"	390	1	310	295	398	102.1
SGRD4	FOOD SERVICE	LD1	10"	380	1	471	448	397	104.5
SGRD5	FOOD SERVICE	LD1	10"	380	1	492	467	400	105.3
SGRD6	FOOD SERVICE	LD1	10"	380	1	351	333	395	103.9
SGRD7	FOOD SERVICE	LD1	10"	390	1	553	525	401	102.8
SGRD8	BACKROOM	LD1	10"	400	1	343	326	407	101.8
SGRD9	BACK ROOM	LD1	10"	400	1	314	298	401	100.3
SGRD10	WASHROOM	LD1	10"	365	1	460	437	380	104.1
Total				4000		4378	4159	4124	103.1%

Diffuser Ret/Exh (GRD)

RTU1/CORE

Asset									
Asset Name	Location	Type	Size	DESIGN CFM	AK	CFM(1)	CFM(2)	FINAL CFM	% to design
EGRD1	FOOD SERVICE	G1	10"	740	1	0	0	0	0.0
EGRD2	FOOD SERVICE	G1	14"	740	1	939	939	939	126.9
EGRD3	FOOD SERVICE	G1	14"	740	1	796	796	796	107.6
EGRD4	FOOD SERVICE	G1	14"	740	1	768	768	768	103.8
EGRD5	FOOD SERVICE	G1	14"	740	1	828	828	828	111.9
Total				3700		3331	3331	3331	90.03%

Completed By: Ryan Ash on 10/21/2025

National TAB

Project: 10-20-25 WAWA #8084 SPRINGFIELD, PA

System/Unit: AHU/RTU



Asset: RTU2

AREA:DELI

Unit Data		
	Design	Actual
MFG	LENNOX ENLIGHT	LENNOX ENLIGHT
Serial Num	-	5625D02350
Model Num	LGT120H4E	LGT120H4E
Type	RTU	RTU
Configuration	VERTICAL	VERTICAL
Num OA Filters 1	-	2
OA Filter Size 1	-	14X23
Num Final Filter 1	-	4
Final Filter Size 1	-	20X25X2

Motor Data		
	Design	Actual
Motor MFG	-	EBMPAPST
Frame	-	NL
Horsepower	3.75	3.8
Motor Rpm	1780	1780
Phase	3	3
Rated Voltage	208	200
Rated Amperage	8.0	8.0

Test Data		
	Design	Actual
SF CFM	4000	3998
SF RPM	-	1460
RA CFM	3700	3695
OA CFM	300	303
RL Voltage	-	213.6/214.4/214.3
RL Amperage	-	4.7/4.8/4.8
SF Rotation	-	CW
SF System SetPt	-	82%
RA Damper Position	-	MECHANICAL LINKAGE
Min OA Damper Position	-	18%
Min OA Damper Type	-	ECONOMIZER

Performance Data		
	Design	Actual
MA Plenum SP	-	-0.13"
Fan Suction SP	-	-0.88"
Fan Discharge SP	-	0.78"
Total ESP	0.5"	0.91"
Fan Total SP	-	1.66"

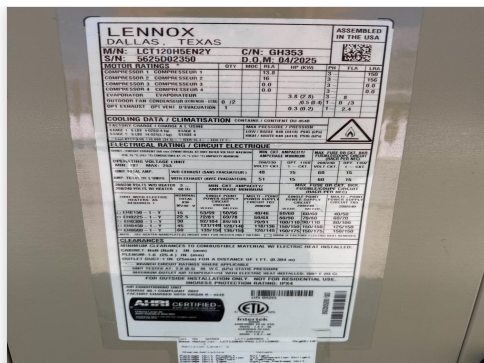
General	
	Actual
Fan Rotation Correct	YES
Unit Filters Clean	YES
Condensate Drain Installed	YES

Completed By: Ryan Ash on 10/21/2025

Unit Data - PHOTO LOG



10/20/2025



10/20/2025



10/20/2025

National TAB

Project: 10-20-25 WAWA #8084 SPRINGFEILD, PA

AHU/RTU



Diffuser Supply (GRD)

RTU2/DELI

Asset									
Asset Name	Location	Type	Size	DESIGN CFM	AK	CFM(1)	CFM(2)	FINAL CFM	% to design
SGRD1	COFFEE	LD1	10"	410	1	548	468	439	107.1
SGRD2	COFFEE	LD1	10"	410	1	390	413	421	102.7
SGRD3	COFFEE	LD1	10"	410	1	415	429	429	104.6
SGRD4	COFFEE	LD1	10"	410	1	438	455	455	111.0
SGRD5	ASSOCIATES	CD1	8"	150	1	276	146	153	102.0
SGRD6	RETAIL	LD1	10"	410	1	341	383	383	93.4
SGRD7	RETAIL	LD1	10"	410	1	524	429	429	104.6
SGRD8	RETAIL	LD1	10"	415	1	381	385	385	92.8
SGRD9	RETAIL	LD1	10"	415	1	322	413	363	87.5
SGRD10	RETAIL	LD1	10"	410	1	370	381	385	93.9
SGRD11	OFFICE	CD1	8"	150	1	177		156	104.0
Total				4000		4182	3902	3998	99.95%

Completed By: Ryan Ash on 10/21/2025

National TAB

Project: 10-20-25 WAWA #8084 SPRINGFEILD, PA

System/Unit: AHU/RTU



Asset: RTU3

AREA:RETAIL

Unit Data		
	Design	Actual
MFG	LENNOX ENLIGHT	LENNOX ENLIGHT
Serial Num	-	5625D02343
Model Num	LGT092H4E	LGT092H4E
Type	RTU	RTU
Configuration	VERTICAL	VERTICAL
Num OA Filters 1	-	2
OA Filter Size 1	-	14X23
Num Final Filter 1	-	4
Final Filter Size 1	-	20X25X2

Motor Data		
	Design	Actual
Motor MFG	-	EBMPAPST
Frame	-	NL
Horsepower	3.75	3.8
Motor Rpm	1780	1780
Phase	3	3
Rated Voltage	208	200
Rated Amperage	8.0	8.0

Test Data		
	Design	Actual
SF CFM	3000	3117
SF RPM	-	1157
RA CFM	2700	2809
OA CFM	300	308
RL Voltage	-	214.6/213.8/214.2
RL Amperage	-	2.8/2.8/2.7
SF Rotation	-	CW
SF System SetPt	-	65%
RA Damper Position	-	MECHANICAL LINKAGE
Min OA Damper Position	-	13%
Min OA Damper Type	-	ECONOMIZER

Performance Data		
	Design	Actual
MA Plenum SP	-	-0.01"
Fan Suction SP	-	-0.60"
Fan Discharge SP	-	0.64"
Total ESP	0.5"	0.65"
Fan Total SP	-	1.24"

General	
	Actual
Fan Rotation Correct	YES
Unit Filters Clean	YES
Condensate Drain Installed	YES

Completed By: Ryan Ash on 10/21/2025

Unit Data - PHOTO LOG



10/20/2025



10/20/2025



10/20/2025

National TAB

Project: 10-20-25 WAWA #8084 SPRINGFEILD, PA

AHU/RTU



Diffuser Supply (GRD)

RTU3/RETAIL

Asset									
Asset Name	Location	Type	Size	DESIGN CFM	AK	CFM(1)	CFM(2)	FINAL CFM	% to design
SGRD1	REAR VESTIBULE	CD3	6"	100	1	161	153	107	107.0
SGRD2	RESTROOM	CD	6"	75	1	34	32	76	101.3
SGRD3	RESTROOM	CD	6"	75	1	123	117	73	97.3
SGRD4	HALLWAY	CD1	8"	150	1	428	407	157	104.7
SGRD5	RETAIL	LD1	10"	350	1	57	54	384	109.7
SGRD6	RETAIL	LD1	10"	350	1	393	373	383	109.4
SGRD7	RETAIL	LD1	10"	350	1	455	433	361	103.1
SGRD8	RETAIL	LD1	10"	350	1	272	259	347	99.1
SGRD9	RETAIL	CD1	10"	450	1	470	447	468	104.0
SGRD10	RETAIL	CD1	10"	450	1	517	491	476	105.8
SGRD11	FRONT VESTIBULE	CD2	10"	300	1	413	393	285	95.0
Total				3000		3323	3159	3117	103.9%

Completed By: Ryan Ash on 10/21/2025

National TAB

Project: 10-20-25 WAWA #8084 SPRINGFEILD, PA

System/Unit: FAN - Exhaust



Asset: EF1

AREA:HOOD FAN

Unit Data		
	Design	Actual
MFG	PENNBARRY	PENNBARRY
Model Num	DX10Q	DX10Q
Serial Num	-	26970458
Type	DOWNBLAST	DOWNBLAST
Configuration	VERTICAL	VERTICAL

Motor Data		
	Design	Actual
Motor MFG	-	GREENHECK
Frame	-	48Y
Horsepower	1/6	0.25
Motor Rpm	-	1725
Phase	1	1
Voltage (rated)	120	115 A
Amperage (rated)	-	3.1 A
Service Factor	-	1.00

Test Data		
	Design	Actual
CFM	500	520
Fan RPM	-	NA
Fan Rotation	-	CCW
Motor RPM	-	NA
System SetPt	-	MARKED ON DIAL
RL Voltage	-	NA
RL Amperage	-	NA
Total ESP	0.250"	0.47"
Fan Inlet SP	-	-0.47"
Fan Discharge SP	-	ATM

Completed By: Ryan Ash on 10/21/2025

Unit Data - PHOTO LOG



10/20/2025



10/20/2025



10/20/2025

National TAB

Project: 10-20-25 WAWA #8084 SPRINGFIELD, PA

FAN - Exhaust



Diffuser Ret/Exh (GRD)

EF1/HOOD FAN

Asset									
Asset Name	Location	Type	Size	DESIGN CFM	AK	CFM(1)	CFM(2)	FINAL CFM	% to design
EGRD1	STAGING	G1	6"	100	1	155	167	102	102.0
EGRD2	BACKROOM	G1	8"	200	1	262	281	214	107.0
EGRD3	BACKROOM	G1	8"	200	1	457	462	204	102.0
Total				500		874	910	520	104%

Completed By: Ryan Ash on 10/21/2025

National TAB

Project: 10-20-25 WAWA #8084 SPRINGFEILD, PA

System/Unit: FAN - Exhaust



Asset: EF2

AREA:RESTROOM

Unit Data		
	Design	Actual
MFG	PENNBARRY	PENNBARRY
Model Num	DX08Q	DX08Q
Serial Num	-	26970459
Type	DOWNBLAST	DOWNBLAST
Configuration	VERTICAL	VERTICAL

Test Data		
	Design	Actual
CFM	200	201
Fan RPM	-	NA
Fan Rotation	-	CCW
Motor RPM	-	NA
System SetPt	-	MARKED ON DIAL
RL Voltage	-	NA
RL Amperage	-	1.0 A
Total ESP	0.125"	0.17"
Fan Inlet SP	-	-0.17"
Fan Discharge SP	-	ATM

Motor Data		
	Design	Actual
Motor MFG	-	GREENHECK
Frame	-	NL
Horsepower	1/6	1/30
Motor Rpm	-	1550
Phase	1	1
Voltage (rated)	120	115
Amperage (rated)	-	1.1
Service Factor	-	NL

Completed By: Ryan Ash on 10/21/2025

Unit Data - PHOTO LOG



10/20/2025



10/20/2025



10/20/2025

National TAB

Project: 10-20-25 WAWA #8084 SPRINGFEILD, PA

FAN - Exhaust



Diffuser Ret/Exh (GRD)

EF2/RESTROOM

Asset									
Asset Name	Location	Type	Size	DESIGN CFM	AK	CFM(1)	CFM(2)	FINAL CFM	% to design
EGRD1	RESTROOM	G3	8"	100	1	107	104	104	104.0
EGRD2	RESTROOM	G3	6"	100	1	95	97	97	97.0
Total				200		202	201	201	100.5%

Completed By: Ryan Ash on 10/20/2025

National TAB

Project: 10-20-25 WAWA #8084 SPRINGFEILD, PA

System/Unit: FAN - Exhaust



Asset: EF3

AREA:METER ROOM

Unit Data		
	Design	Actual
MFG	PENNBARRY	PENNBARRY
Model Num	Z3H	Z3H
Type	INLINE	INLINE
Configuration	VERTICAL	VERTICAL

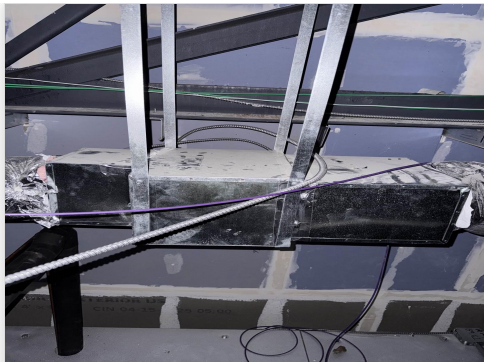
Test Data		
	Design	Actual
CFM	60	62
System SetPt	-	MARKED ON DIAL [HIGHEST SPEED]

Completed By: Ryan Ash on 10/21/2025

Unit Data - PHOTO LOG



10/21/2025



10/21/2025

