

HOOD INFORMATION - JOB#4837527

HOOD NO	TAG	MODEL	MANUFACTURER	LENGTH	MAX COOKING TEMP	TYPE	APPLIANCE DUTY	DESIGN CFM/FT	TOTAL EXH CFM	EXHAUST PLENUM RISER(S)				HOOD CONSTRUCTION	HOOD CONFIG		
										WIDTH	LENG	HEIGHT	DIA		CFM	VEL	SP
1	HD 1	5412 SND-2	CAPTIVEAIRE	15' 10"	600 DEG	I	HEAVY	206	3262	4'	14'	1631	1526	-0.424'	430 SS WHERE EXPOSED	ALONE	ALONE

HOOD INFORMATION

HOOD NO	TAG	FILTER(S)				LIGHT(S)			
		TYPE	QTY	HEIGHT	LENGTH	EFFICIENCY @ 7 MICRONS	QTY	TYPE	WIRE GUARD
1	HD 1	SS BAFFLE WITH HANDLES	12	16"	16"	30%	6	L55 SERIES E26	NO

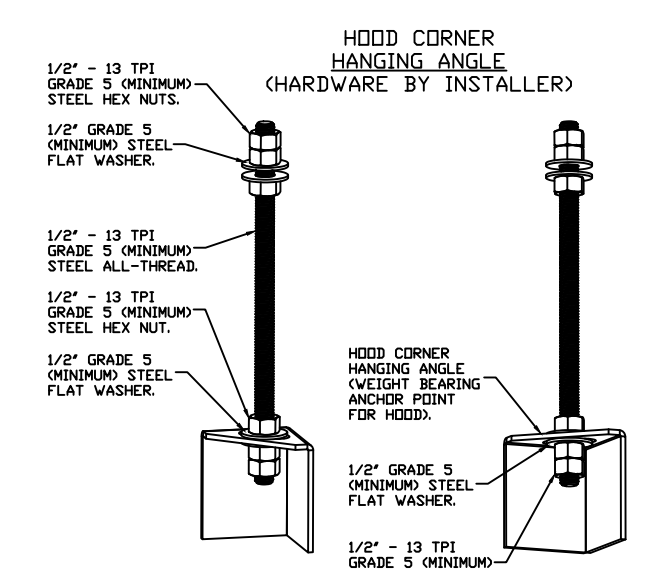
LOCATION	SIZE	UTILITY CABINET(S)		FIRE SYSTEM	ELECTRICAL	SWITCHES	FIRE SYSTEM PIPING	HOOD HANGING WEIGHT
		TYPE	SIZE					
							YES	788 LBS

HOOD OPTIONS

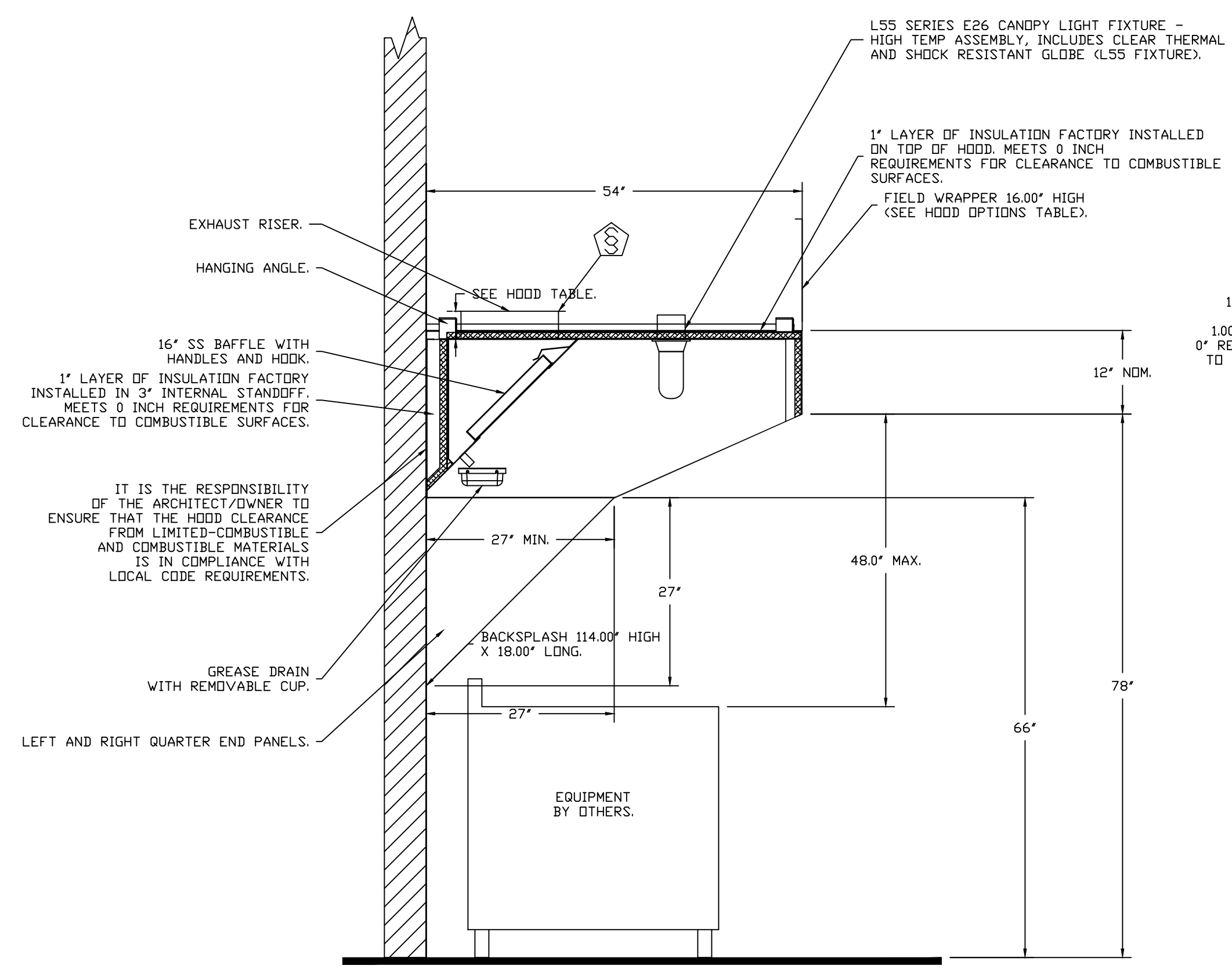
HOOD NO	TAG	OPTION
1	HD 1	FIELD WRAPPER 16.00" HIGH FRONT, LEFT, RIGHT. BACKSPLASH 113.00" HIGH X 228.00" LONG 430 SS VERTICAL. BACKSPLASH 114.00" HIGH X 18.00" LONG 430 SS VERTICAL. BACKSPLASH 114.00" HIGH X 18.00" LONG 430 SS VERTICAL. BACKSPLASH - INSIDE CORNER 66.00" HIGH X 2.00" LEG LENGTH 430 SS VERTICAL. BACKSPLASH - INSIDE CORNER 66.00" HIGH X 2.00" LEG LENGTH 430 SS VERTICAL. RIGHT END STANDOFF(FIN/SLP) 1" WIDE 54" LONG INSULATED. LEFT END STANDOFF(FIN/SLP) 1" WIDE 54" LONG INSULATED. RIGHT QUARTER END PANEL 27" TOP WIDTH, 0" BOTTOM WIDTH, 27" HIGH 430 SS. LEFT QUARTER END PANEL 27" TOP WIDTH, 0" BOTTOM WIDTH, 27" HIGH 430 SS. INSULATION FOR TOP OF HOOD. INSULATION FOR BACK OF HOOD. SENSOR-CV.

CAPTIVE-AIRE HOODS ARE BUILT IN COMPLIANCE WITH UL 710 AND NFPA 96 AND ARE RECOGNIZED BY ONE OR MORE OF THE FOLLOWING:
ETL SANITATION LISTED
ETL LISTED FILE# 3054804-001

HOOD SYSTEM IS FABRICATED & DESIGNED PER UL-710 STANDARDS



ASSEMBLY INSTRUCTIONS
HANGING ANGLE MUST BE SUPPORTED WITH 1/2" - 13 TPI GRADE 5 (MINIMUM) ALL-THREAD. SANDWICH HANGING ANGLES AND CEILING ANCHOR POINTS WITH 1/2" GRADE 5 (MINIMUM) STEEL FLAT WASHERS AND 1/2" - 13 TPI GRADE 5 (MINIMUM) HEX NUTS AS SHOWN. MUST USE DOUBLED HEX NUT CONFIGURATION BENEATH HOOD HANGING ANGLES AND ABOVE CEILING ANCHORS. MAINTAIN 1/4" OF EXPOSED THREADS BENEATH BOTTOM HEX NUT. TORQUE ALL HEX NUTS TO 57 FT-LBS.



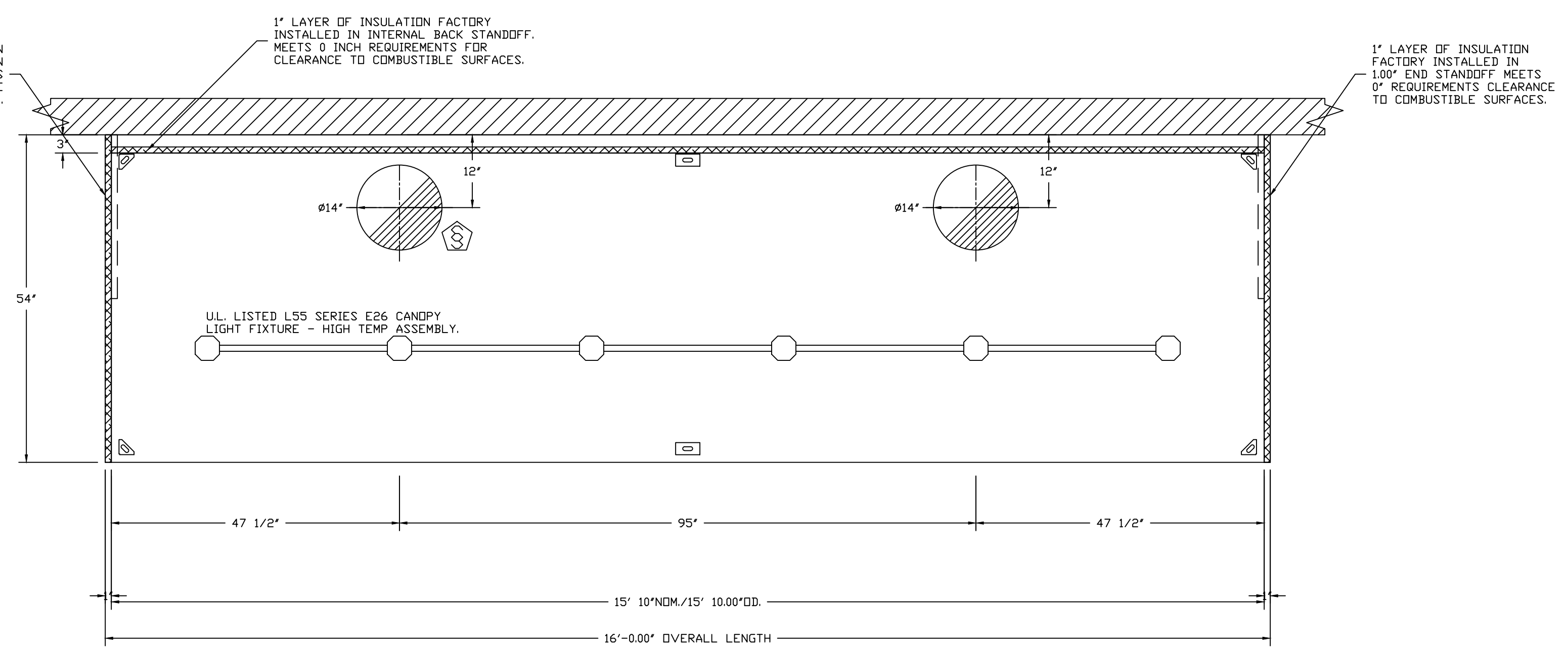
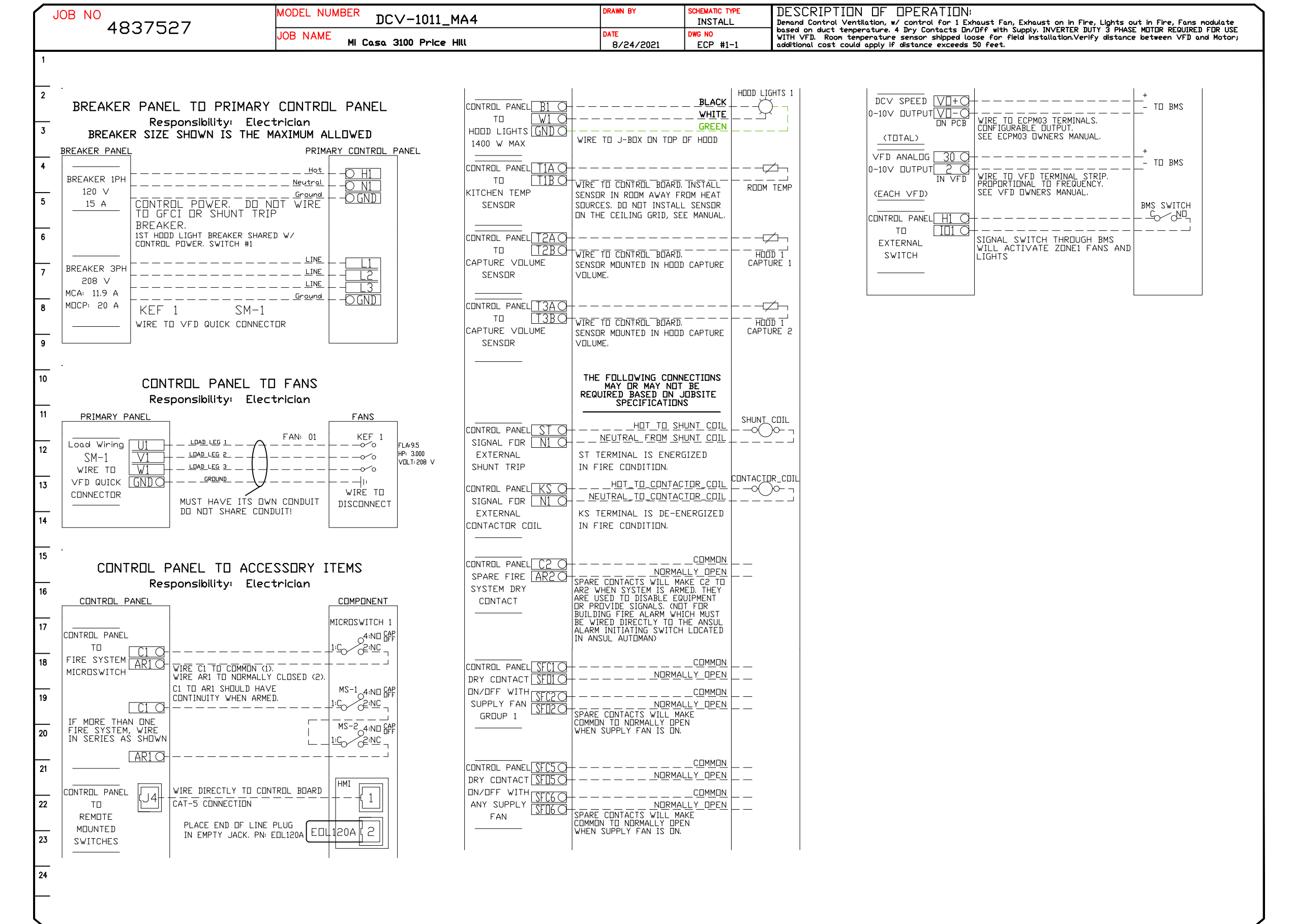
SECTION VIEW - MODEL 5412SND-2
HOOD - #1 (HD 1)

PATENT NUMBERS

EXHAUST HOODS ND-2/BD-2/SND-2 (CANADA) - CA PATENT 2520435 C.

ELECTRICAL PACKAGE - JOB#4837527

NO	TAG	PACKAGE #	LOCATION	SWITCHES		OPTION	FANS CONTROLLED					
				LOCATION	QUANTITY		FAN TAG	TYPE	Φ	HP	VOLT	FLA
1	EP 1	DCV-1011_MA4	WALL MOUNT IN SS BOX	02" FACE MOUNT RIGHT SIDE OF HOOD HOOD # 1	1 LIGHT 1 FAN	SMART CONTROLS DCV	KEF 1	EXHAUST	3	3,000	208	9.5



PLAN VIEW - HOOD #1 (HD 1)
15' 10.00" LONG 5412SND-2
NOTE: ADDITIONAL HANGING ANGLES PROVIDED FOR HOODS 12' AND LONGER.

REVISIONS

DESCRIPTION	DATE



Mi Casa 3100 Price Hill
3100 Price Ave,
Cincinnati, OH, 45205

DATE: 8/24/2021
DWG.#: 4837527
DRAWN BY: jcirilli
SCALE: 3/4" = 1'-0"
MASTER DRAWING

SHEET NO. 1

EXHAUST FAN INFORMATION - JOB#4837527

FAN UNIT NO	TAG	QTY	FAN UNIT MODEL #	MANUFACTURER	CFM	ESP	RPM	MOTOR ENCL	HP	BHP	PHASE	VOLT	FLA	DISCHARGE VELOCITY	WEIGHT (LBS)	SDNES
1	KEF 1	1	USB118DD-RM	CAPTIVEAIRE	3262	1.400	1463	DDP,PREMIUM	3.000	1.7730	3	208	9.5	1672 FPM	438	23
3	KEF2-DVN	1	DU33HFA	CAPTIVEAIRE	600	0.450	1215	TEAD-ECM	0.333	0.1080	1	115	4.3	297 FPM	63	10.2
4	EF3-MEN	1	CFA-S110-CA	CAPTIVEAIRE	75	0.300	938	GENERALPURPOSE	0.042	0.0320	1	115	0.3		12	3.3
5	EF4-WOMEN	1	CFA-S110-CA	CAPTIVEAIRE	75	0.300	938	GENERALPURPOSE	0.042	0.0320	1	115	0.3		12	3.3

FAN OPTIONS

FAN UNIT NO	TAG	QTY	DESCRIPTION		
1	KEF 1	1	UTILITY SET GREASE CUP.		
		1	B118 - 24" DISCHARGE EXTENSION.		
		1	B1 - DISCHARGE ORIENTATION VERTICAL UPPER LEFT - CW INLET SIDE.		
		1	B118 - INLET CONNECTION STANDARD 20" FLANGED GREASE DUCT.		
		1	UTILITY SET - SPRING VIBRATION ISOLATORS - B118 / EQUIVALENT SIZED UTILITY SET - INDOOR/OUTDOOR USE.		
		1	B118DD - HIGH TEMPERATURE HEAT & SMOKE OPTION.		
		1	B118 - INLET SERVICE DUCT CONNECTION. USED TO CONNECT TO STANDARD 20" GREASE DUCT OR FIELD WELDED DUCT. INCLUDES (2) 7" RISERS BOLTED TO STANDARD INLET RISER.		
		1	2 YEAR PARTS WARRANTY.		
		2	DDAS-RTU1	1	SINGLE POINT ELECTRICAL CONNECTION FOR RTU. QNTY 1 750VA TRANSFORMER USED. IF A NON-DCV PREWIRE CONTROLS THIS UNIT, THE #28, #47, *MA*, OR *E2* OPTION PREWIRE MUST BE SELECTED. DO NOT PROVIDE SUPPLY STARTER IN PREWIRE.
				1	CASLINK BUILDING MONITORING SYSTEM - INTERNET OR CELLULAR CONNECTION REQUIRED.
1	2" MERV 13 FILTERS FOR SIZE 3 RTU. QTY 4.				
1	OVERHEAT STAT.				
1	TOTAL CFM MONITORING FOR DDAS.				
1	VFD FACTORY MOUNTED AND WIRED IN COMMERCIAL CONTROL VESTIBULE FOR RTU.				
1	INLET PRESSURE GAUGE, 0-35".				
1	MANIFOLD PRESSURE GAUGE, 0 TO 10" WC, 1 FURNACE.				
1	SIZE 3 RTU CURB HANGER.				
1	RETURN MOUNTED SMOKE DETECTOR FOR RTU. COMPLETE WITH DETECTOR AND SAMPLING TUBE. FACTORY INSTALLED.				
1	OCCUPIED SCHEDULING.				
1	15 TON MODULATING COOLING OPTION, 208/230V. R410A REFRIGERANT, VARIABLE SPEED COMPRESSOR, ECM CONDENSING FANS.				
1	15 TON MODULATING REHEAT OPTION. SPACE DEWPOINT CONTROL.				
1	RTU MANUAL INTAKE/RETURN DAMPER CONTROL VIA HMI.				
1	RTU SIZE 3 DOWN RETURN.				
1	VAV PACKAGE W/ MANUAL/DDC CONTROL (571 VFD INCLUDED).				
1	LINE REACTOR MOUNTED IN FAN.				
1	RTU SIZE 3 SIDE DISCHARGE.				
1	5 YEAR ENTIRE UNIT PARTS WARRANTY, 10 YEAR ENTIRE UNIT PARTS WARRANTY WITH REMOTE MONITORING AND CAPTIVEAIRE SERVICE CONTRACT, 25 YEAR STAINLESS STEEL FURNACE PARTS WARRANTY (SEE ADDITIONAL DETAILS).				
3	KEF2-DVN			1	ECM WIRING PACKAGE - MANUAL OR 0-10VDC REFERENCE SPEED CONTROL (TELCO MOTOR), CCW ROTATION.
		1	2 YEAR PARTS WARRANTY.		
4	EF3-MEN	1	ROOF CAP - SLOPED, PAINTED STEEL W/ 6" DUCT COLLAR.		
		1	FAN CONTROL - 3 AMP WHITE SPEED CONTROL FOR CFA CEILING FAN.		
5	EF4-WOMEN	1	ROOF CAP - SLOPED, PAINTED STEEL W/ 6" DUCT COLLAR.		
		1	FAN CONTROL - 3 AMP WHITE SPEED CONTROL FOR CFA CEILING FAN.		

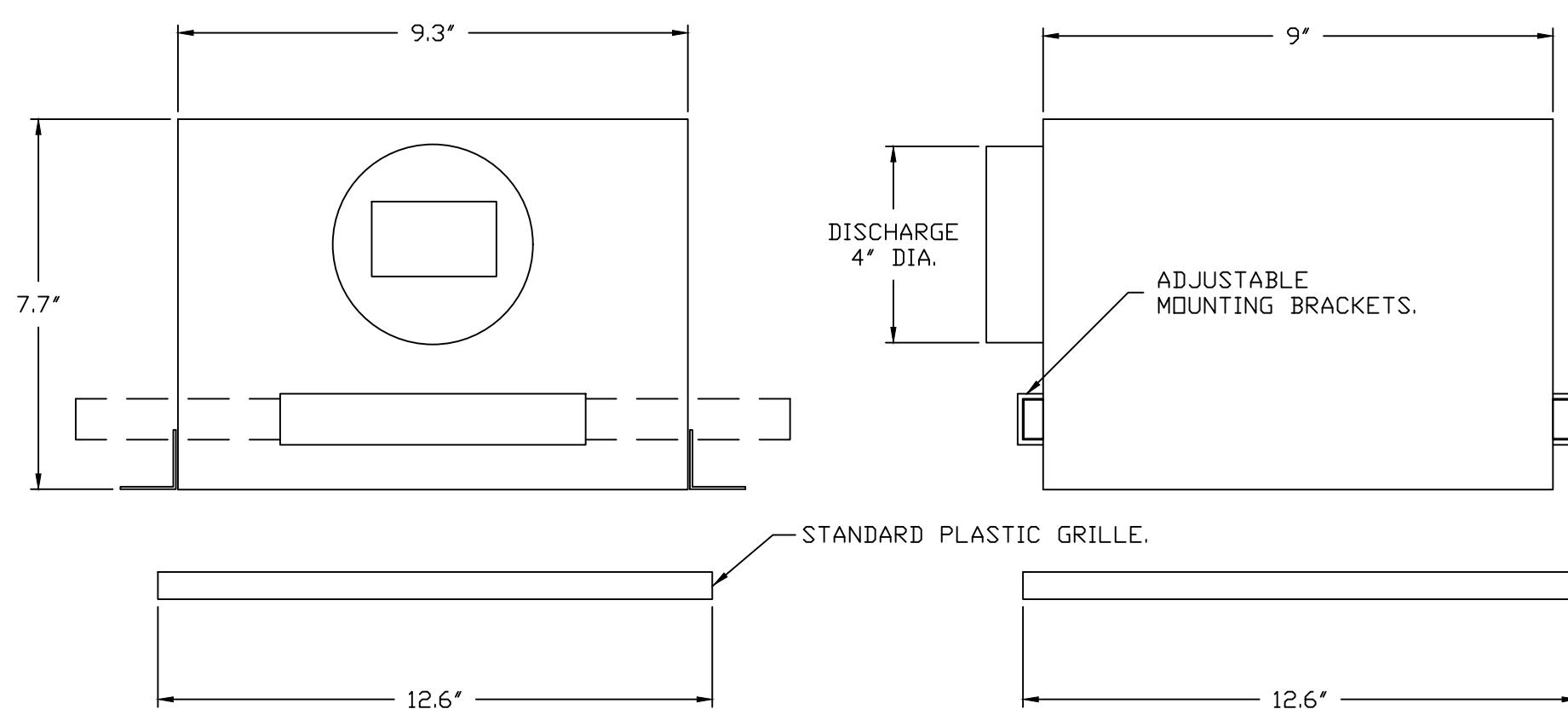
FAN ACCESSORIES

FAN UNIT NO	TAG	EXHAUST				SUPPLY		
		GREASE CUP	GRAVITY DAMPER	WALL MOUNT	SIDE DISCHARGE	GRAVITY DAMPER	MOTORIZED DAMPER	WALL MOUNT
1	KEF 1	YES						
3	KEF2-DVN							
4	EF3-MEN							
5	EF4-WOMEN							

CURB ASSEMBLIES

NO	DN FAN	TAG	WEIGHT	ITEM	SIZE
1	# 1	KEF 1	50 LBS	RAIL	4.000"W X 48.000"L X 24.000"H 1.000:12.000 PITCH ALONG WIDTH, COMES AS A SET OF 2.
2	# 2	DDAS-RTU1	68 LBS	CURB	59.500"W X 91.000"L X 12.000"H 1.000:12.000 PITCH ALONG WIDTH, RIGHT INSULATED.
3	# 3	KEF2-DVN	24 LBS	CURB	19.500"W X 19.500"L X 18.000"H ALONG LENGTH, RIGHT HINGED.
4		SUPPLY CURBS	33 LBS	CURB	26.500"W X 26.500"L X 18.000"H 1.000:12.000 PITCH ALONG LENGTH, RIGHT INSULATED.

FANS #4 (EF3-MEN), #5 (EF4-WOMEN) - CFA-S110-CA EXHAUST FAN



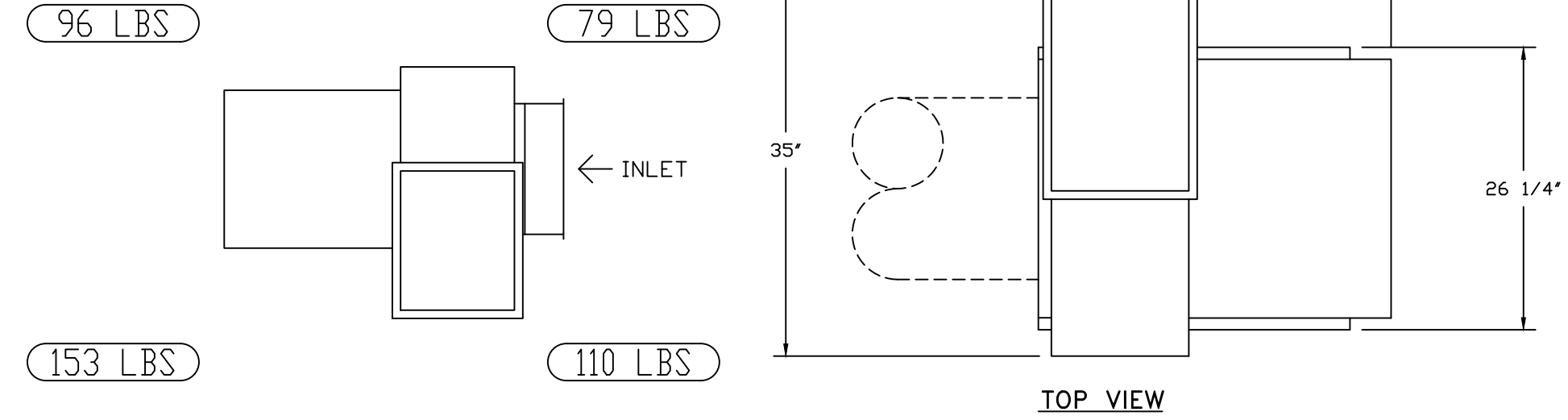
- FEATURES:**
- 20 GA. GALVANIZED STEEL HOUSING.
 - PLUG TYPE DISCONNECT.
 - BUILT IN AUTOMATIC BACKDRAFT DAMPER.
 - UL LISTED.
 - MOUNTING BRACKETS.

- OPTIONS**
- ROOF CAP - SLOPED, PAINTED STEEL W/ 6" DUCT COLLAR.
 - FAN CONTROL - 3 AMP WHITE SPEED CONTROL FOR CFA CEILING FAN.
 - 2 YEAR PARTS WARRANTY.

FAN #1 USB118DD-RM - EXHAUST FAN (KEF 1)

CORNER WEIGHTS ARE CALCULATED BASED ON VERTICAL DISCHARGE. SUPPORT DUCT PROPERLY BEFORE FAN TO ENSURE CORNER WEIGHTS ARE NOT AFFECTED.

UNIT PLAN VIEW CORNER WEIGHTS:



TOP VIEW

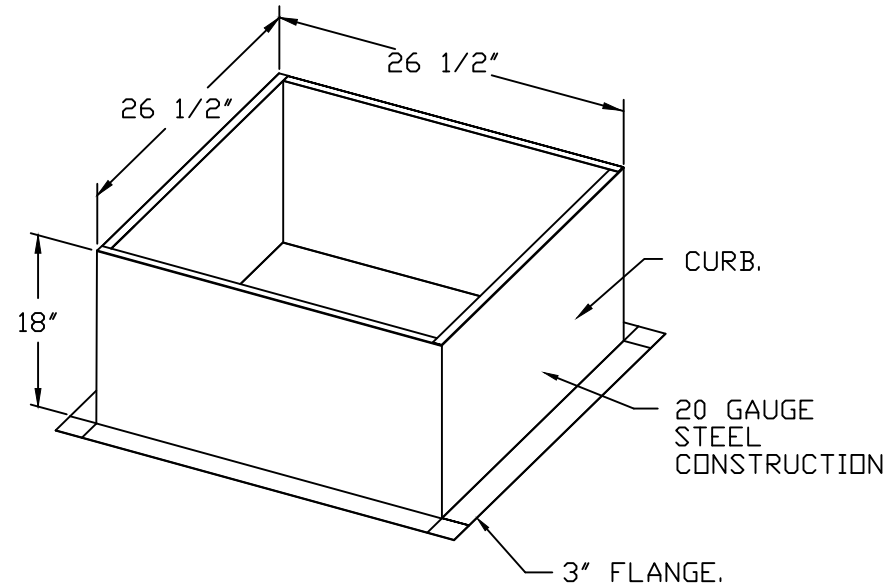
FEATURES:

- ROOF MOUNTED FANS.
- UL705.
- UL752 AND ULC-S645 (RESTAURANT MODEL).
- HIGH HEAT OPERATION DIRECT DRIVE 350°F (176°C).
- HEAT SLINGER.
- NEMA 3R SAFETY DISCONNECT SWITCH.
- GREASE CLASSIFICATION TESTING.
- 2" DRAIN.
- MOTOR WEATHER COVER.
- FULLY SEALED SCROLL HOUSING.
- SCROLL ACCESS DOOR.
- FLANGE 1 1/4".

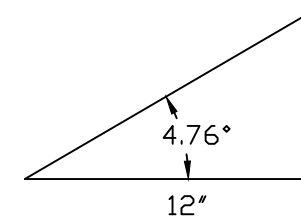
OPTIONS

- UTILITY SET GREASE CUP.
- B118 - 24" DISCHARGE EXTENSION.
- B1 - DISCHARGE ORIENTATION VERTICAL UPPER LEFT - CW INLET SIDE.
- B118 - INLET CONNECTION STANDARD 20" FLANGED GREASE DUCT.
- UTILITY SET - SPRING VIBRATION ISOLATORS - B118 / EQUIVALENT SIZED UTILITY SET - INDOOR/OUTDOOR USE.
- B118DD - HIGH TEMPERATURE HEAT & SMOKE OPTION - 572°F CONTINUOUS.
- B118 - INLET SERVICE DUCT CONNECTION. USED TO CONNECT TO STANDARD 20" GREASE DUCT OR FIELD WELDED DUCT. INCLUDES (2) 7" RISERS BOLTED TO STANDARD INLET RISER.
- 2 YEAR PARTS WARRANTY.

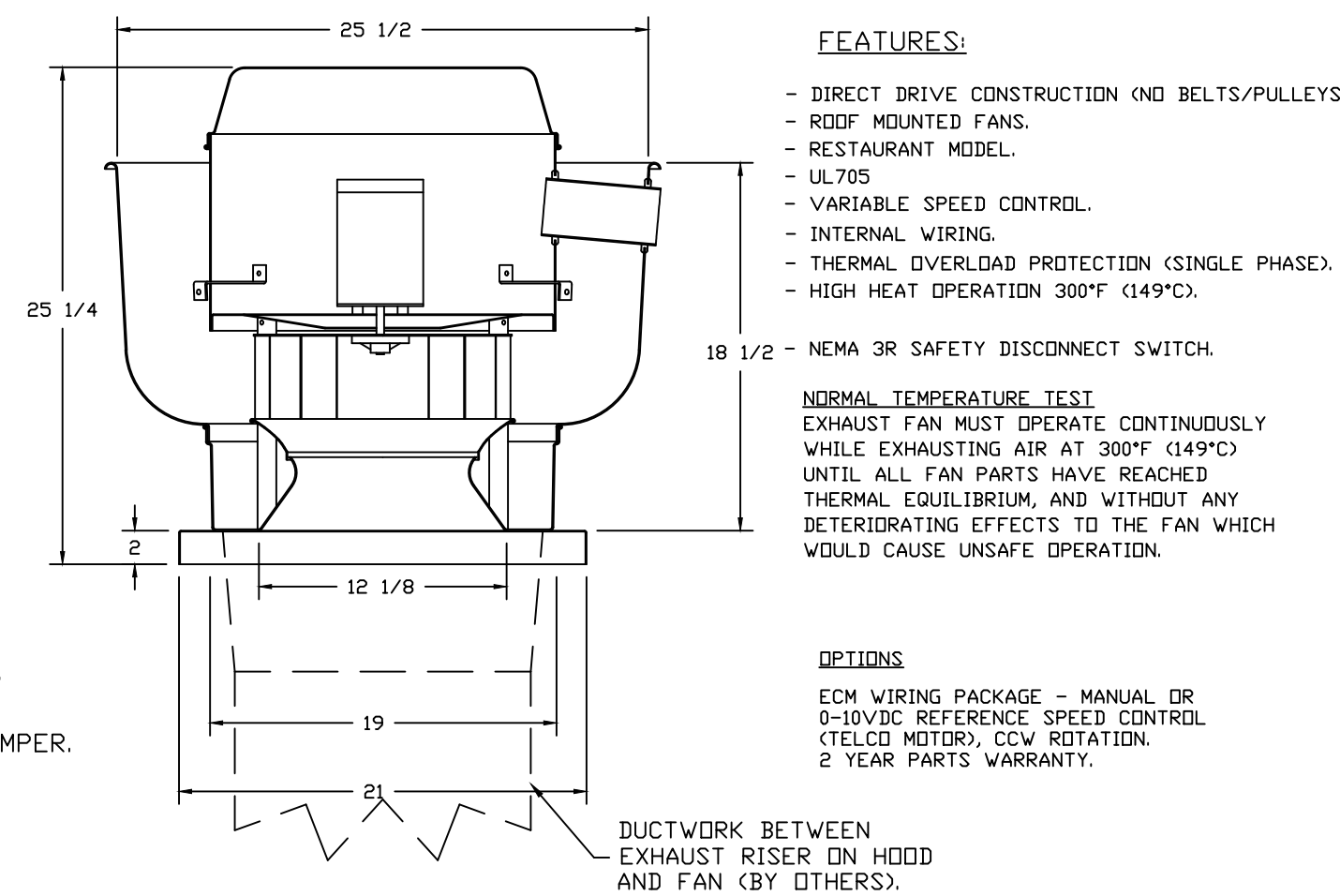
CURB #4 (SUPPLY CURBS) CRB26.5X18E



1"/12" PITCH = 4.76° SLOPE



FAN #3 DU33HFA - EXHAUST FAN (KEF2-DVN)



FEATURES:

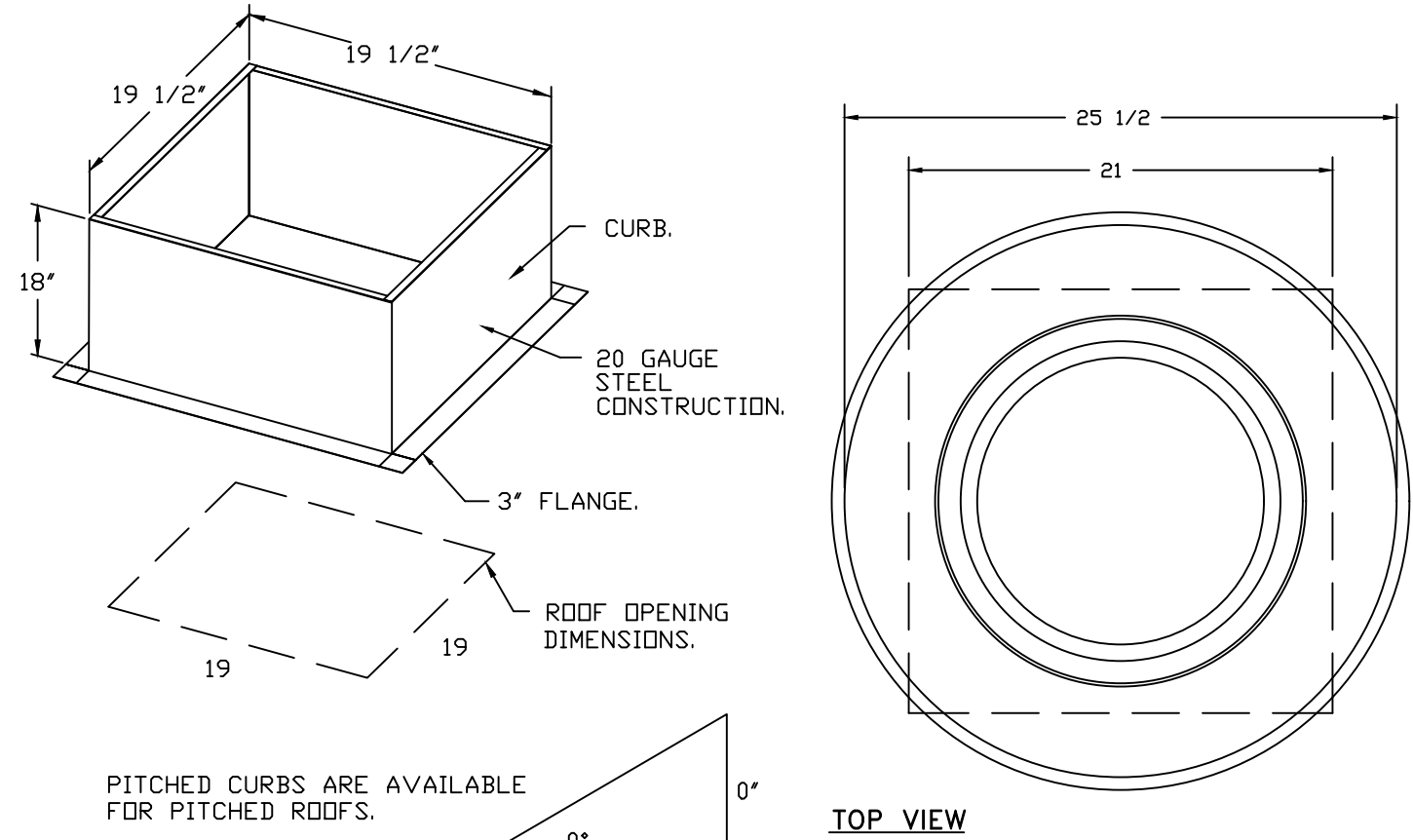
- DIRECT DRIVE CONSTRUCTION (NO BELTS/PULLEYS).
- ROOF MOUNTED FANS.
- RESTAURANT MODEL.
- UL705
- VARIABLE SPEED CONTROL.
- INTERNAL WIRING.
- THERMAL OVERLOAD PROTECTION (SINGLE PHASE).
- HIGH HEAT OPERATION 300°F (149°C).
- NEMA 3R SAFETY DISCONNECT SWITCH.

NORMAL TEMPERATURE TEST
EXHAUST FAN MUST OPERATE CONTINUOUSLY WHILE EXHAUSTING AIR AT 300°F (149°C) UNTIL ALL FAN PARTS HAVE REACHED THERMAL EQUILIBRIUM, AND WITHOUT ANY DETERIORATING EFFECTS TO THE FAN WHICH WOULD CAUSE UNSAFE OPERATION.

OPTIONS

- ECM WIRING PACKAGE - MANUAL OR 0-10VDC REFERENCE SPEED CONTROL (TELCO MOTOR), CCW ROTATION.
- 2 YEAR PARTS WARRANTY.

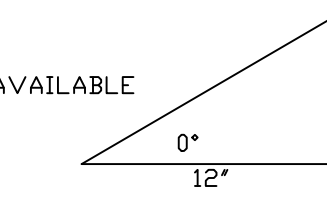
DUCTWORK BETWEEN EXHAUST RISER ON HOOD AND FAN (BY OTHERS).



TOP VIEW

PITCHED CURBS ARE AVAILABLE FOR PITCHED ROOFS.

SPECIFY PITCH:
EXAMPLE: 7/12" PITCH = 30° SLOPE.



REVISIONS

DESCRIPTION	DATE

CAPTIVEAIRE

Air Solutions

1329 East Kemper Rd., Ste. 4210, Cincinnati, OH, 45246 PHONE: (513) 860-5555 EMAIL: reg12@captivaire.com

Mi Casa 3100 Price Hill
3100 Price Ave,
Cincinnati, OH, 45205

DATE: 8/24/2021
DWG.#: 4837527
DRAWN BY: jcirilli
SCALE: 3/4" = 1'-0"
MASTER DRAWING

DOAS/RTU FAN SCHEDULE - JOB#4837527

FAN UNIT NO	TAG	QTY	DOAS/RTU MODEL #	MANUFACTURER	BLOWER	RETURN AIR CFM	MAX OUTSIDE AIR CFM	TOTAL CFM	ESP	HP	BHP	PHASE	VOLT	MCA	MDCP	WEIGHT (LBS)
2	DDAS-RTU1	1	CASRTU3-I.500-20-15T-DDAS	CAPTIVEAIR	20P-3	811	3939	4750	0.700	5.000	3.7600	3	208	70.3A	80A	2519

DOAS/RTU COOLING SCHEDULE

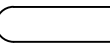
FAN UNIT NO	TAG	COMPRESSOR			OUTDOOR FAN				INDOOR COIL		OUTSIDE AIR DB TEMP	OUTSIDE AIR WB TEMP	MIXED AIR DB TEMP	MIXED AIR WB TEMP	LEAVING DB TEMP	LEAVING WB TEMP	LEAVING DP TEMP	TOTAL CAPACITY	SENSIBLE CAPACITY	LATENT CAPACITY	REHEAT LEAVING DB TEMP	REHEAT LEAVING WB TEMP	DESIRED REHEAT CAPACITY	MAX REHEAT CAPACITY	REHEAT LEAVING RELATIVE HUMIDITY	MOISTURE REMOVAL RATE	IEER
		TONNAGE	VOLTAGE	PHASE	MOTOR VOLTAGE	MOTOR Ø	MOTOR FREQUENCY	MOTOR QTY	ROWS	FACE AREA																	
2	DDAS-RTU1	15	190-240	3	200-240	3	60	2	6	11.9 SQFT	89.0°F	74.0°F	86.6°F	72.2°F	63.7°F	60.3°F	58.4°F	186.0 MBH	112.4 MBH	73.6 MBH	71.0°F	62.8°F	37.2 MBH	129.6 MBH	64	66.9 LBS/HR	18.8

DOAS/RTU HEATING SCHEDULE

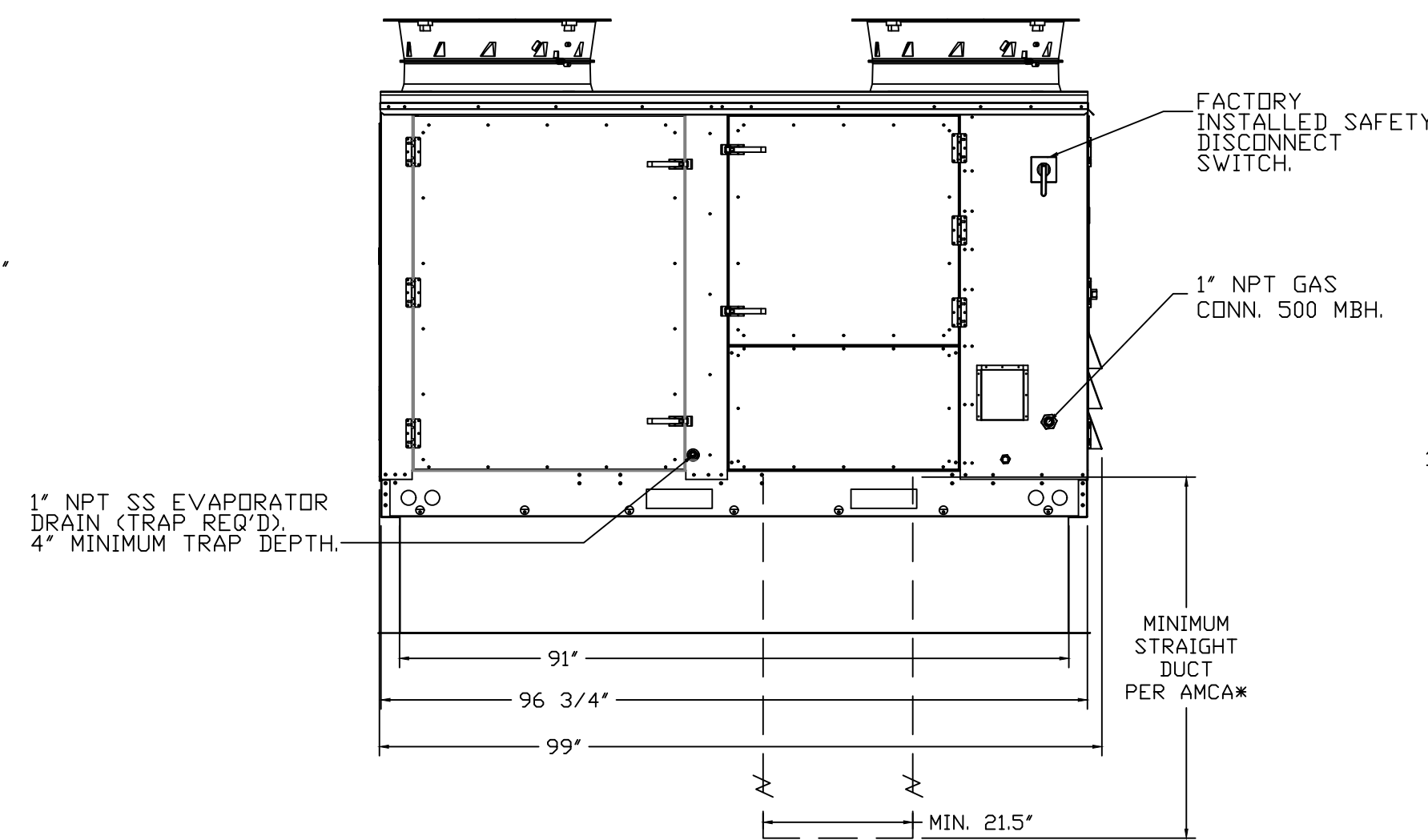
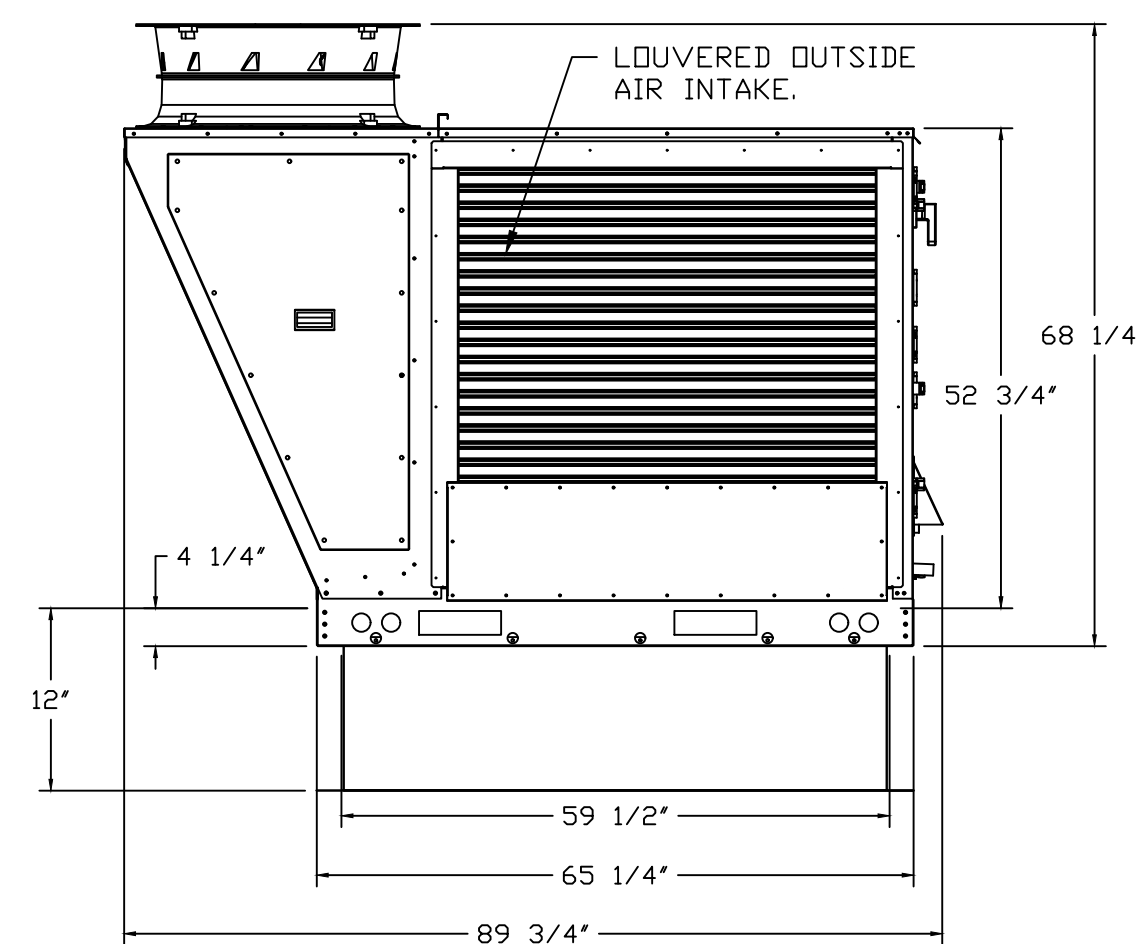
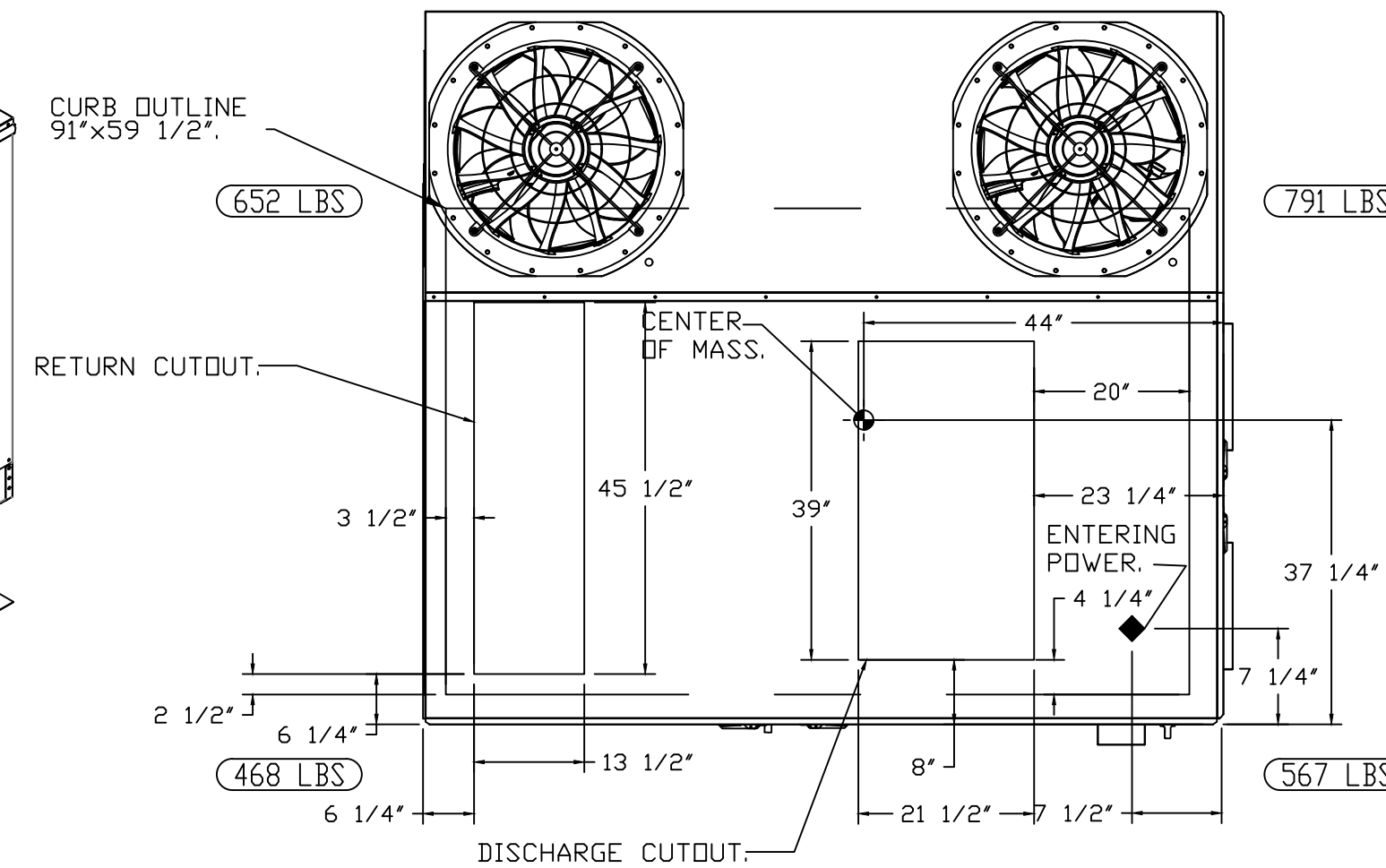
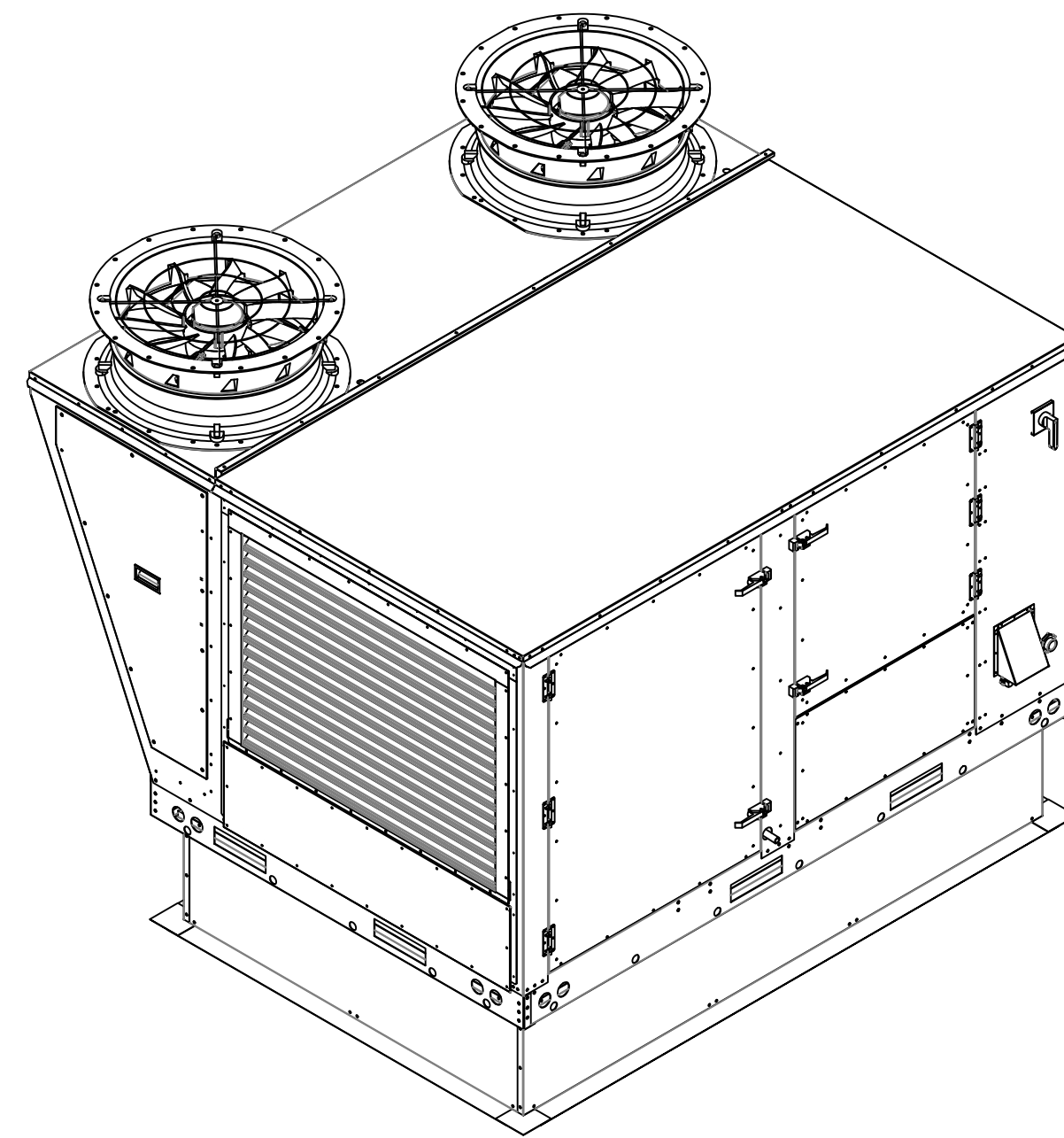
FAN UNIT NO	TAG	INPUT BTUs	OUTPUT BTUs	TEMP RISE	REQUIRED INPUT GAS PRESSURE	GAS TYPE	BURNER EFFICIENCY(%)
2	DDAS-RTU1	490199	392159	70°F	7 IN. W.C. - 14 IN. W.C.	NATURAL	80

FAN #2 CASRTU3-I.500-20-15T-DDAS - HEATER (DDAS-RTU1)

NOTES:

- DO NOT OBSTRUCT OUTSIDE AIR INLET, OUTSIDE AIR COIL OR OUTSIDE AIR FAN.
-  DENOTES CORNER WEIGHT.
- ROOF OPENING MUST BE 2" SMALLER THAN CURB DIMENSIONS IN BOTH DIRECTIONS.

*NOTE: SUPPLY DUCT MUST BE INSTALLED TO MEET SMACNA STANDARDS. A MINIMUM STRAIGHT DUCT LENGTH MUST BE MAINTAINED DOWNSTREAM OF UNIT DISCHARGE AS OUTLINED IN AMCA PUBLICATION 201. WHEN USING RECTANGULAR DUCTWORK, ELBOWS MUST BE RADIUS THROAT, RADIUS BACK WITH TURNING VANES. FLEXIBLE DUCTWORK AND SQUARE THROAT/SQUARE BACK ELBOWS SHOULD NOT BE USED. ANY TRANSITION AND/OR TURNS IN THE DUCTWORK WILL CAUSE SYSTEM EFFECT. SYSTEM EFFECT WILL DRASTICALLY INCREASE STATIC PRESSURE AND REDUCE AIRFLOW. DO NOT RELY ON UNIT TO SUPPORT DUCT IN ANY WAY. FAILURE TO PROPERLY SIZE DUCTWORK MAY CAUSE SYSTEM EFFECTS AND REDUCE PERFORMANCE OF THE EQUIPMENT. SUGGESTED STRAIGHT DUCT SIZE IS 21.5" x 39".



OPTIONS

- SINGLE POINT ELECTRICAL CONNECTION FOR RTU. QNTY 1 750VA TRANSFORMER USED. IF A NON-DCV PREWIRE CONTROLS THIS UNIT, THE #28, #47, "MA", OR "E2" OPTION PREWIRE MUST BE SELECTED. DO NOT PROVIDE SUPPLY STARTER IN PREWIRE.
- CASLINK BUILDING MONITORING SYSTEM - INTERNET OR CELLULAR CONNECTION REQUIRED.
- LOW AMBIENT COOLING OPERATION.
- RTU SIZE 3 DOWN DISCHARGE.
- 2" MERV 13 FILTERS FOR SIZE 3 RTU. QTY 4.
- OVERHEAT STAT.
- TOTAL CFM MONITORING FOR DOAS.
- VFD FACTORY MOUNTED AND WIRED IN COMMERCIAL CONTROL VESTIBULE FOR RTU.
- INLET PRESSURE GAUGE, 0-35".
- MANIFOLD PRESSURE GAUGE, 0 TO 10" WC, 1 FURNACE.
- SIZE 3 RTU CURB DUCT HANGER.
- RETURN MOUNTED SMOKE DETECTOR FOR RTU. COMPLETE WITH DETECTOR AND SAMPLING TUBE. FACTORY INSTALLED.
- OCCUPIED SCHEDULING.
- 15 TON MODULATING COOLING OPTION, 208/230V. R410A REFRIGERANT, VARIABLE SPEED COMPRESSOR, ECM CONDENSING FANS).
- 15 TON MODULATING REHEAT OPTION. SPACE DEWPOINT CONTROL.
- RTU MANUAL INTAKE/RETURN DAMPER CONTROL VIA HMI.
- RTU SIZE 3 DOWN RETURN.
- VAV PACKAGE W/ MANUAL/DDC CONTROL (571 VFD INCLUDED).
- LINE REACTOR MOUNTED IN FAN.
- 5 YEAR ENTIRE UNIT PARTS WARRANTY, 10 YEAR ENTIRE UNIT PARTS WARRANTY WITH REMOTE MONITORING AND CAPTIVEAIR SERVICE CONTRACT, 25 YEAR STAINLESS STEEL FURNACE PARTS WARRANTY (SEE ADDITIONAL DETAILS).

REVISIONS

DESCRIPTION	DATE



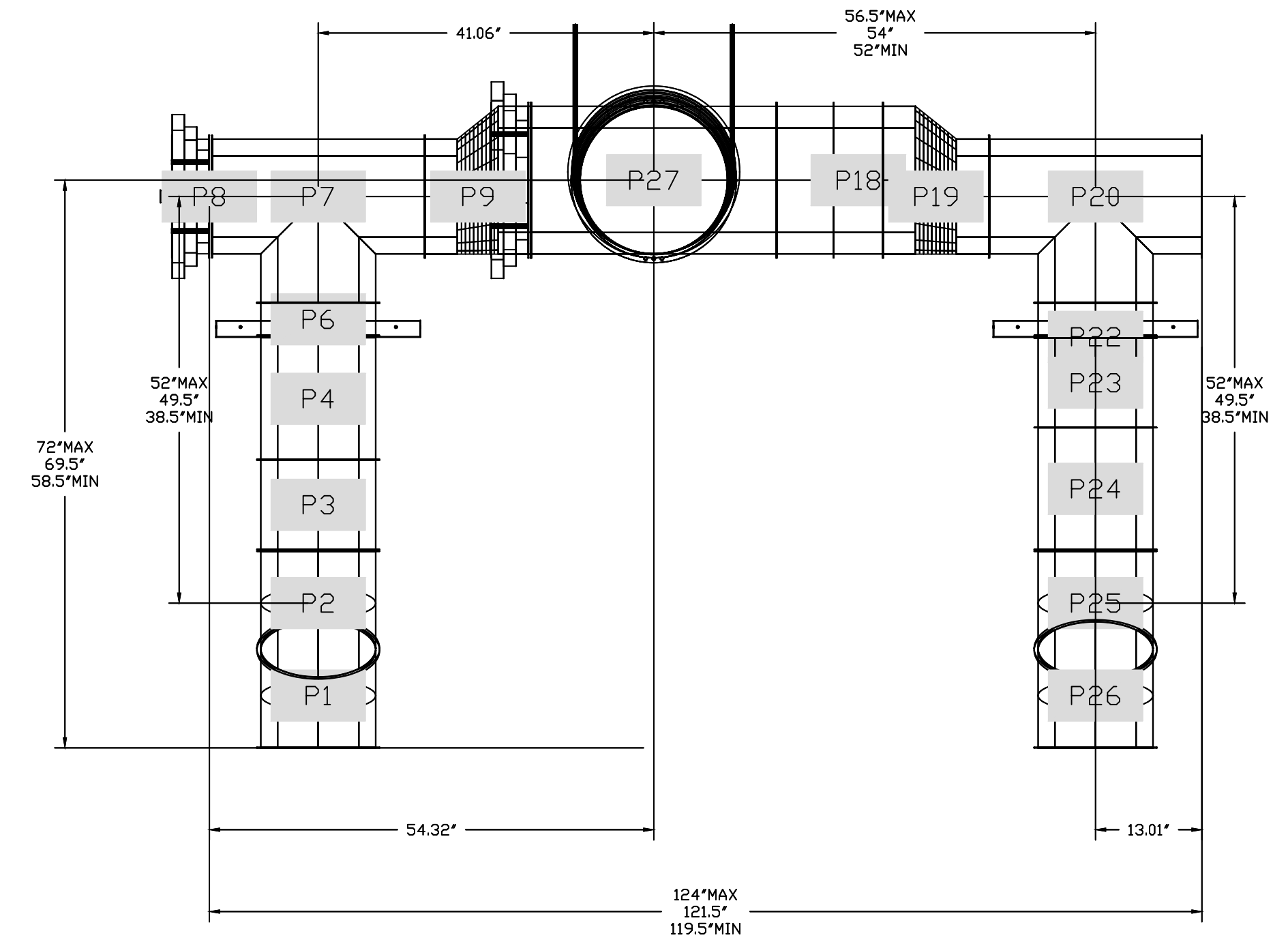
Mi Casa 3100 Price Hill
3100 Price Ave,
Cincinnati, OH, 45205

DATE: 8/24/2021
DWG.#: 4837527
DRAWN BY: jcirilli
SCALE: 3/4" = 1'-0"
MASTER DRAWING

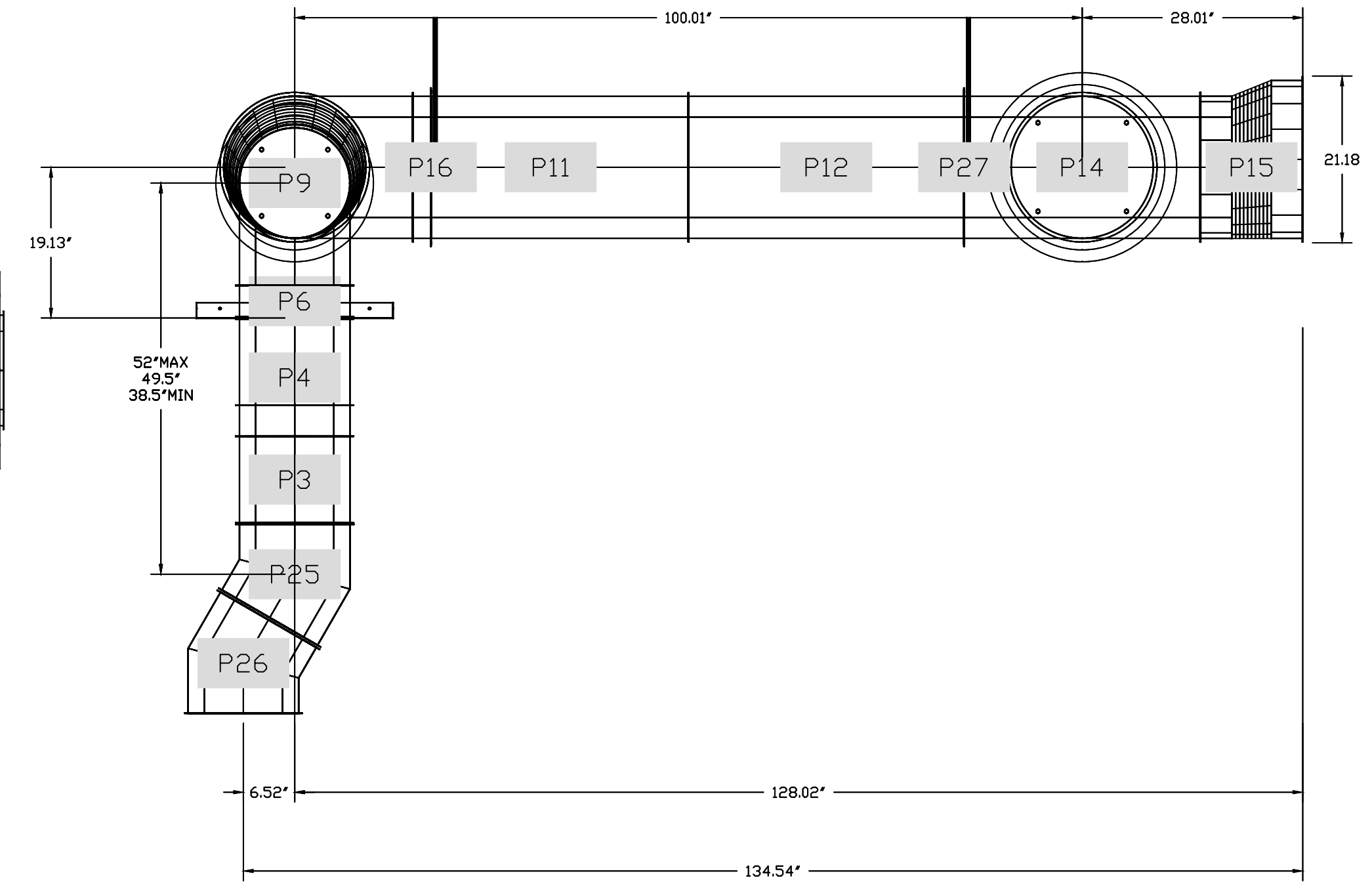
DUCTWORK #1 PARTS - JOB#4837527 DUCT RUN

TAG	PART #	CFM	GPM	ZONE	COVEREDBY	SP	WEIGHT	VELOCITY	QTY	DESCRIPTION
P1	DW1430ASY	1631				-0.0298	6.28	1525.70	1	SINGLE WALL DUCT 30 DEGREE ELBOW, 14" DUCT, ASSEMBLY.
P2	DW1430ASY	1631				-0.0197	6.28	1525.70	1	SINGLE WALL DUCT 30 DEGREE ELBOW, 14" DUCT, ASSEMBLY.
P3	DW1411LT	1631				-0.0038	5.46	1525.70	1	SINGLE WALL DUCT 14" DIAMETER, 11" LONG, FLANGE AT BOTH ENDS. STAINLESS STEEL.
P4	DW1424AJDKIT	1631				-0.0052	14.56	1525.70	1	SINGLE WALL DUCT ADJUSTABLE, 14" DIAMETER, 23.5" LONG, FLANGE AT ONE END WITH A 14" ADJUSTABLE COLLAR - STAINLESS STEEL.
P5	ASSEMBLED W/P4,P6						14.65	1525.70	1	DUCT TO CURB TRANSITION DOWN TURN, 23.50" CURB TO 14" DUCT, 16 GA ALUMINIZED. NOT FOR USE WITH EXHAUST FANS.
P6	ASSEMBLED W/P5					-0.001	2.25	1525.70	1	SINGLE WALL DUCT 14" DIAMETER, 4" LONG, FLANGE AT BOTH ENDS. STAINLESS STEEL.
P7	ASSEMBLED W/P8			1		-0.109	15.95	1525.70	1	SINGLE WALL DUCT TEE, 14" DUCT, ASSEMBLY.
P8	ASSEMBLED W/P7 D=S						13.89		1	DUCT ACCESS DOOR - INSULATED - USED WITH 14" DUCT - GREASE DAM INCLUDED - ASSEMBLY.
P9	DW1418ADPEC	1631				-0.032	7.50	1525.70	1	SINGLE WALL DUCT ADAPTER, 14" DUCT DIA TO 18" DUCT DIA, ECCENTRIC ASSEMBLY.
P10	DW18TEASY			1		-0.0503	22.75		1	SINGLE WALL DUCT TEE, 18" DUCT, ASSEMBLY.
P11	DW1835LT						21.00		1	SINGLE WALL DUCT 18" DIAMETER, 35" LONG, FLANGE AT BOTH ENDS. STAINLESS STEEL.
P12	DW1835LT						21.00		1	SINGLE WALL DUCT 18" DIAMETER, 35" LONG, FLANGE AT BOTH ENDS. STAINLESS STEEL.
P13	ASSEMBLED W/P14			1			22.75		1	SINGLE WALL DUCT TEE, 18" DUCT, ASSEMBLY.
P14	ASSEMBLED W/P13 D=T						19.40		1	DUCT ACCESS DOOR - INSULATED - USED WITH 18" DUCT - GREASE DAM INCLUDED - ASSEMBLY.
P15	DW1820ADPEC						13.20		1	SINGLE WALL DUCT ADAPTER, 18" DUCT DIA TO 20" DUCT DIA, ECCENTRIC ASSEMBLY.
P16	DW18SUBRASY						3.38		1	DUCT SUPPRT BRACKET KIT, 18" DUCT, USED FOR HANGING DUCT. 12 GA STEEL, CLEAR ZINC COATING. - 2 RINGS, 4 BRACKETS, & HARDWARE BAG 2.
P17	DW1807LT						4.66		1	SINGLE WALL DUCT 18" DIAMETER, 7" LONG, FLANGE AT BOTH ENDS. STAINLESS STEEL.
P18	DW1815AJDKIT						18.31		1	SINGLE WALL DUCT ADJUSTABLE, 18" DIAMETER, 14.50" LONG, FLANGE AT ONE END WITH A 18" ADJUSTABLE COLLAR - STAINLESS STEEL.
P19	DW1418ADPEC						7.50		1	SINGLE WALL DUCT ADAPTER, 14" DUCT DIA TO 18" DUCT DIA, ECCENTRIC ASSEMBLY.
P20	DW14TEASY			1		-0.0085	15.95		1	SINGLE WALL DUCT TEE, 14" DUCT, ASSEMBLY.
P21	ASSEMBLED W/P22					-0.001	2.25	1525.70	1	SINGLE WALL DUCT 14" DIAMETER, 4" LONG, FLANGE AT BOTH ENDS. STAINLESS STEEL.
P22	ASSEMBLED W/P21,P23						14.65	1525.70	1	DUCT TO CURB TRANSITION DOWN TURN, 23.50" CURB TO 14" DUCT, 16 GA ALUMINIZED. NOT FOR USE WITH EXHAUST FANS.
P23	ASSEMBLED W/P22					-0.0038	5.46	1525.70	1	SINGLE WALL DUCT 14" DIAMETER, 11" LONG, FLANGE AT BOTH ENDS. STAINLESS STEEL.
P24	DW1424AJDKIT					-0.0052	14.56	1525.70	1	SINGLE WALL DUCT ADJUSTABLE, 14" DIAMETER, 23.5" LONG, FLANGE AT ONE END WITH A 14" ADJUSTABLE COLLAR - STAINLESS STEEL.
P25	DW1430ASY					-0.0197	6.28	1525.70	1	SINGLE WALL DUCT 30 DEGREE ELBOW, 14" DUCT, ASSEMBLY.
P26	DW1430ASY					-0.0298	6.28	1525.70	1	SINGLE WALL DUCT 30 DEGREE ELBOW, 14" DUCT, ASSEMBLY.
P27	DW18SUBRASY						3.38		1	DUCT SUPPRT BRACKET KIT, 18" DUCT, USED FOR HANGING DUCT. 12 GA STEEL, CLEAR ZINC COATING. - 2 RINGS, 4 BRACKETS, & HARDWARE BAG 2.
	3M-2000PLUS						0.80		8	DUCT - 3M FIRE BARRIER 2000 PLUS SILICONE - USED AS SEALANT TO SEAL DUCT JOINTS.
	DW14CLASY						1.06		14	DUCT "V" CLAMP WITH NEW DESIGN 14 GA BRACKETS, 14" DUCT, ASSEMBLY.
	DW18CLASY						1.30		9	DUCT "V" CLAMP WITH NEW DESIGN 14 GA BRACKETS, 18" DUCT, ASSEMBLY.
	DW20CLASY						1.41		1	DUCT "V" CLAMP WITH NEW DESIGN 14 GA BRACKETS, 20" DUCT, ASSEMBLY.
TOTAL WEIGHT							343.93			

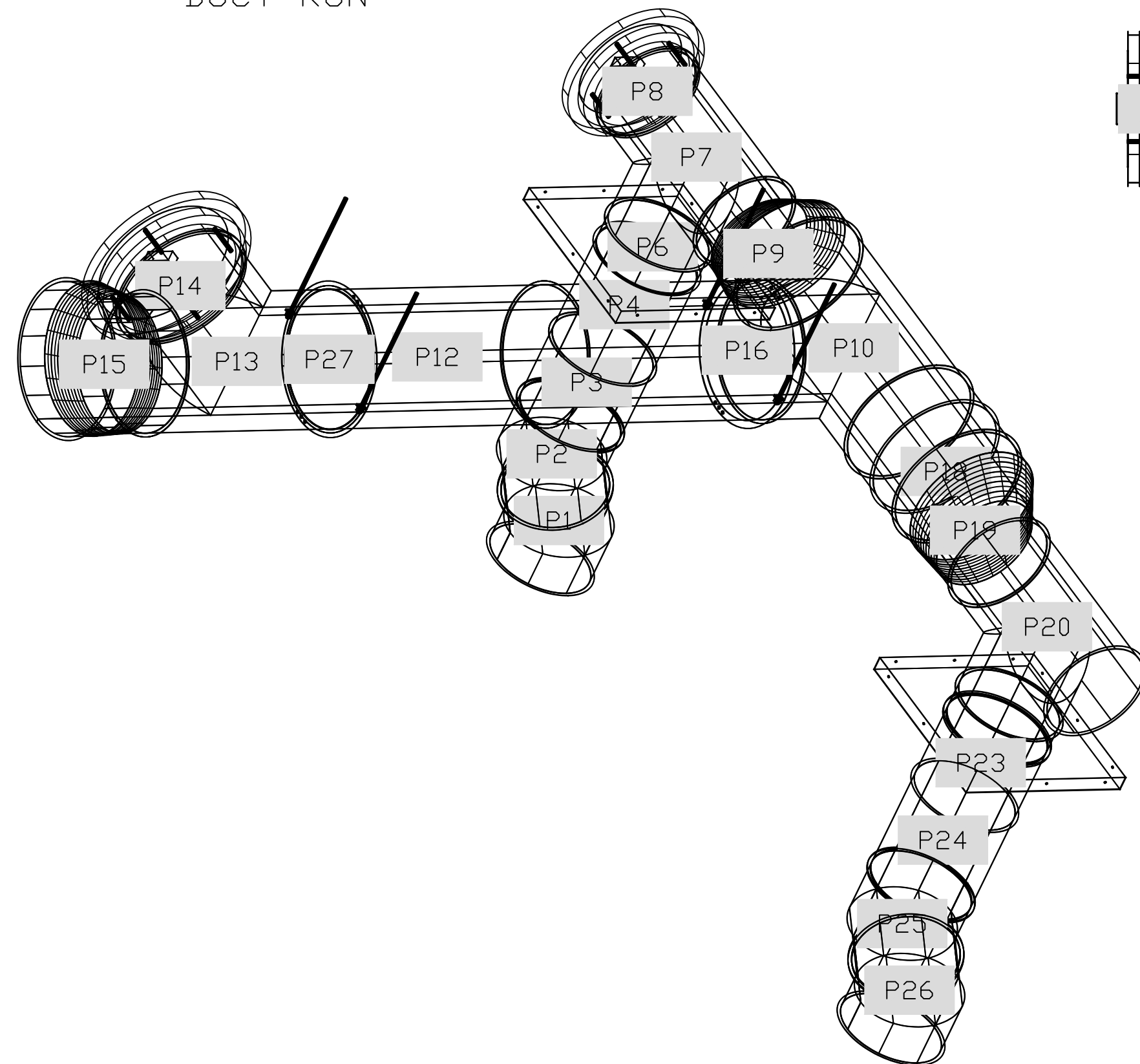
DUCTWORK #1 FRONT VIEW
DUCT RUN



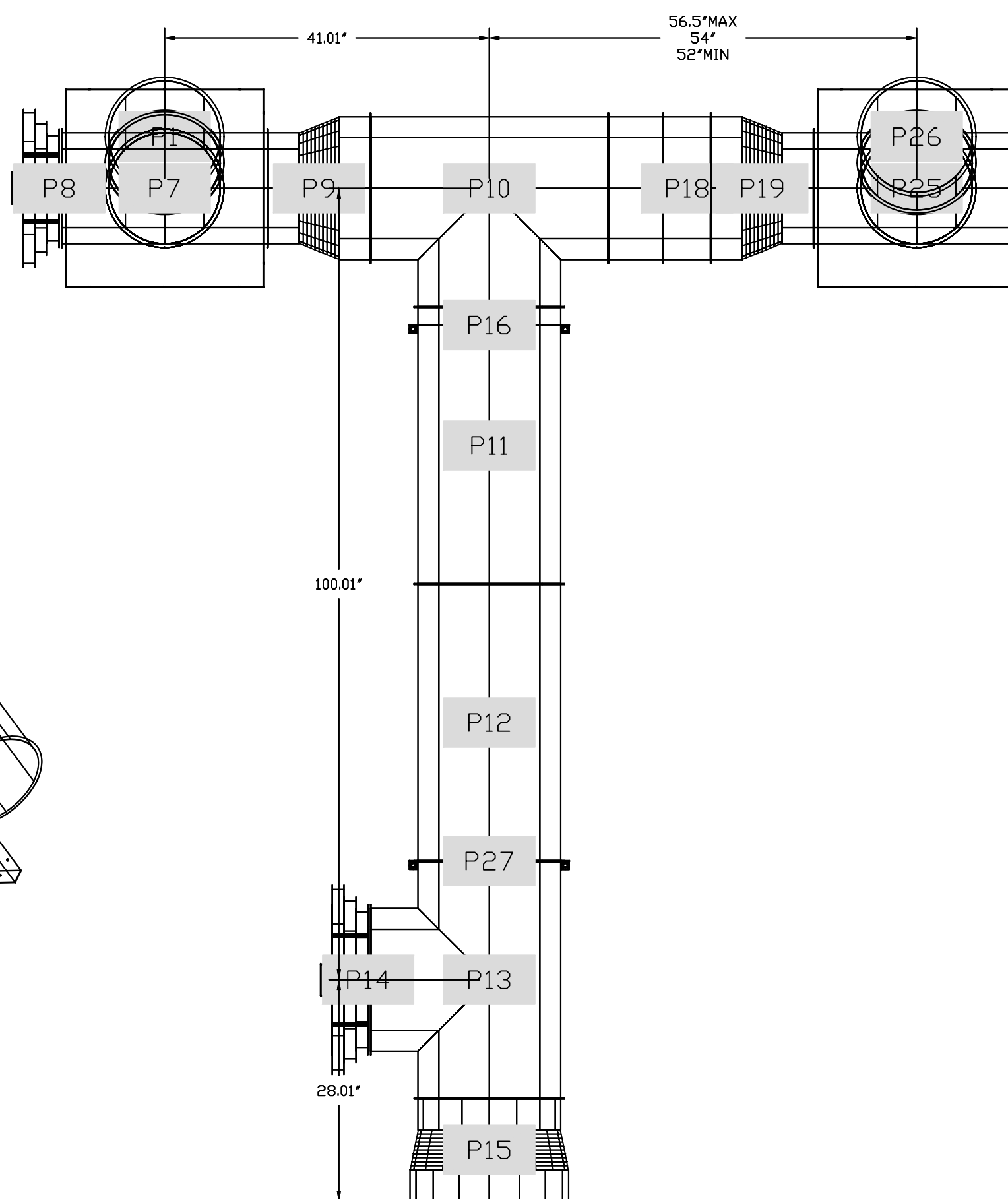
DUCTWORK #1 SIDE VIEW
DUCT RUN



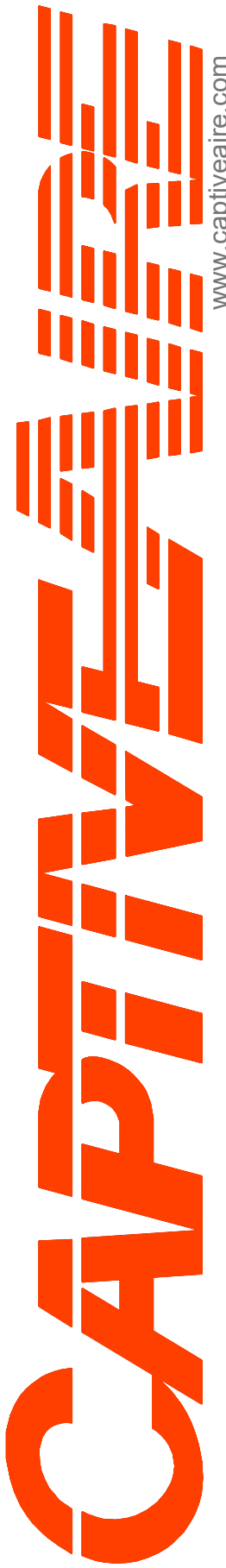
DUCTWORK #1 SE VIEW
DUCT RUN



DUCTWORK #1 TOP VIEW
DUCT RUN



REVISIONS	
DESCRIPTION	DATE


CAPTIVE
 Air Solutions
 1329 East Kemper Rd., Ste. 4210, Cincinnati, OH, 45246 PHONE: (513) 860-5555 EMAIL: reg12@captivair.com

Mi Casa 3100 Price Hill
 3100 Price Ave,
 Cincinnati, OH, 45205

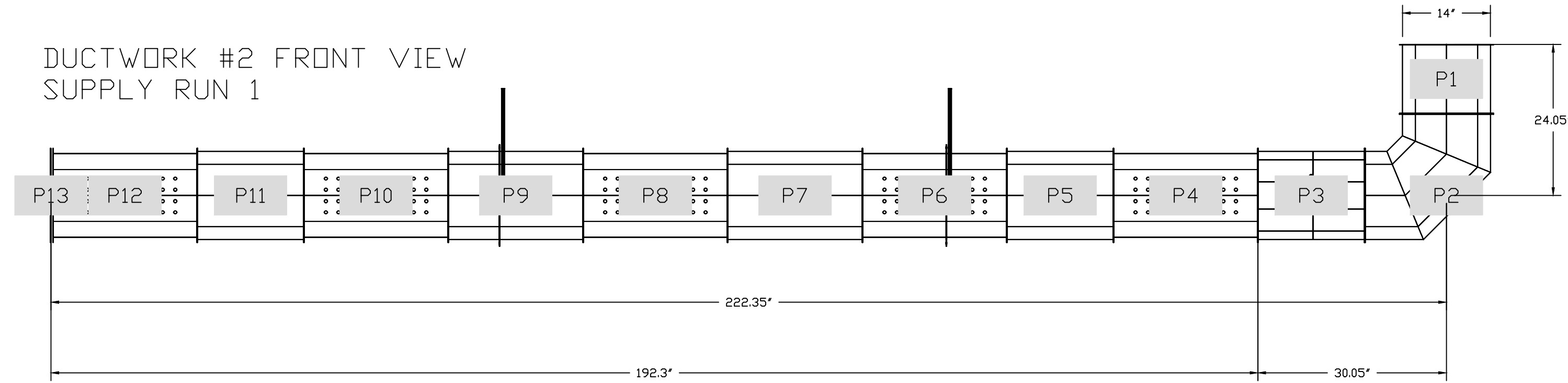
DATE: 8/24/2021
DWG.#: 4837527
DRAWN BY: jcirilli
SCALE: 3/4" = 1'-0"
MASTER DRAWING

SHEET NO.
5

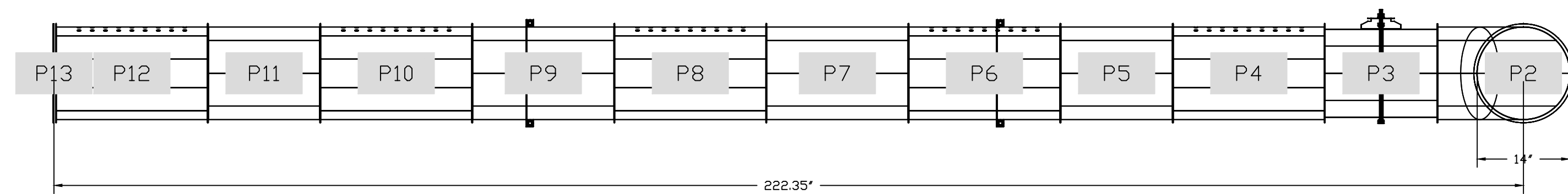
DUCTWORK #2 PARTS - JOB#4837527 SUPPLY RUN 1

TAG	PART #	CFM	GPM	ZONE	COVEREDBY	SP	THRDW	WEIGHT	VELOCITY	QTY	DESCRIPTION
P1	DW1411LT-S	1300						3.64	1216.07	1	SINGLE WALL SUPPLY DUCT 14" DIAMETER, 11" LONG, FLANGE AT BOTH ENDS. STAINLESS STEEL.
P2	DW1490ASY-S	1300						7.08	1216.07	1	SINGLE WALL SUPPLY DUCT 90 DEGREE ELBOW, 14" DUCT, ASSEMBLY.
P3	DW1417DAMPER-MNL	1300						0.00	1216.07	1	UNAVAILABLE PART OR IT IS MISSING FROM THE PARTS LIST.
P4	DW1423LT-S0	1300						7.31	1216.07	1	SINGLE WALL SUPPLY DUCT 14" DIAMETER, 23" LONG, FLANGE AT BOTH ENDS. STAINLESS STEEL.
P5	DW1417LT-S	1040						5.48	972.86	1	SINGLE WALL SUPPLY DUCT 14" DIAMETER, 17" LONG, FLANGE AT BOTH ENDS. STAINLESS STEEL.
P6	DW1423LT-S0	1040						7.31	972.86	1	SINGLE WALL SUPPLY DUCT 14" DIAMETER, 23" LONG, FLANGE AT BOTH ENDS. STAINLESS STEEL.
P7	DW142150LT-S	780						6.85	729.64	1	SINGLE WALL SUPPLY DUCT 14" DIAMETER, 21.5" LONG, FLANGE AT BOTH ENDS. STAINLESS STEEL.
P8	DW1423LT-S0	780						7.31	729.64	1	SINGLE WALL SUPPLY DUCT 14" DIAMETER, 23" LONG, FLANGE AT BOTH ENDS. STAINLESS STEEL.
P9	DW142150LT-S	520						6.85	486.43	1	SINGLE WALL SUPPLY DUCT 14" DIAMETER, 21.5" LONG, FLANGE AT BOTH ENDS. STAINLESS STEEL.
P10	DW1423LT-S0	520						7.31	486.43	1	SINGLE WALL SUPPLY DUCT 14" DIAMETER, 23" LONG, FLANGE AT BOTH ENDS. STAINLESS STEEL.
P11	DW1417LT-S	260						5.48	243.21	1	SINGLE WALL SUPPLY DUCT 14" DIAMETER, 17" LONG, FLANGE AT BOTH ENDS. STAINLESS STEEL.
P12 ASSEMBLED W/P13	DW1423LT-S0	260						7.31	243.21	1	SINGLE WALL SUPPLY DUCT 14" DIAMETER, 23" LONG, FLANGE AT BOTH ENDS. STAINLESS STEEL.
P13 ASSEMBLED W/P12	DW1415AD							2.40		1	DUCT ACCESS DOOR WITH HANDLE, FOR 14" DUCT USE 15" DOOR. STAINLESS STEEL.
P14	HF3-LG-20FT-EACH							2.00		1	SUPPLY DUCT CABLE SUSPENSION SYSTEM - UL APPROVED - GRIPPLE NO.3 (200 LBS) SINGLE LOOP HANGER - GALVANIZED STEEL.
P15	HF3-LG-20FT-EACH							2.00		1	SUPPLY DUCT CABLE SUSPENSION SYSTEM - UL APPROVED - GRIPPLE NO.3 (200 LBS) SINGLE LOOP HANGER - GALVANIZED STEEL.
	20100MNE+9485PC-BLACK							0.50		2	SUPPLY DUCT GASKET - LIGHT DUTY BLENDED EPDM FOAM GASKET - 20100MNE + 9485PC BLACK 1/8" X 1/2" X 50'.
	DW14CLASY							1.06		13	DUCT "V" CLAMP WITH NEW DESIGN 14 GA BRACKETS, 14" DUCT, ASSEMBLY.
TOTAL WEIGHT								93.11			

DUCTWORK #2 FRONT VIEW
SUPPLY RUN 1



DUCTWORK #2 TOP VIEW
SUPPLY RUN 1



REVISIONS

DESCRIPTION	DATE

Mi Casa 3100 Price Hill
3100 Price Ave,
Cincinnati, OH, 45205

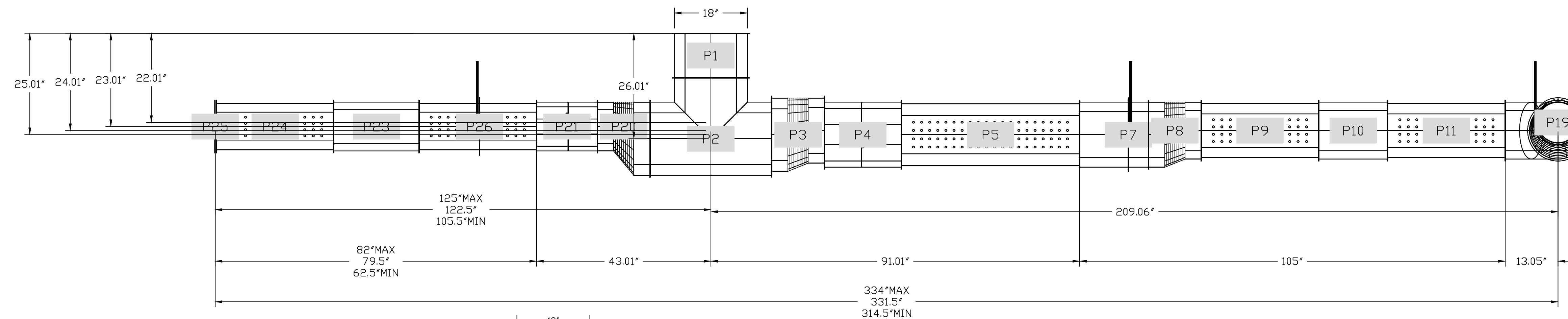
DATE: 8/24/2021
DWG.#: 4837527
DRAWN BY: jcirilli
SCALE: 3/4" = 1'-0"
MASTER DRAWING

SHEET NO.
6

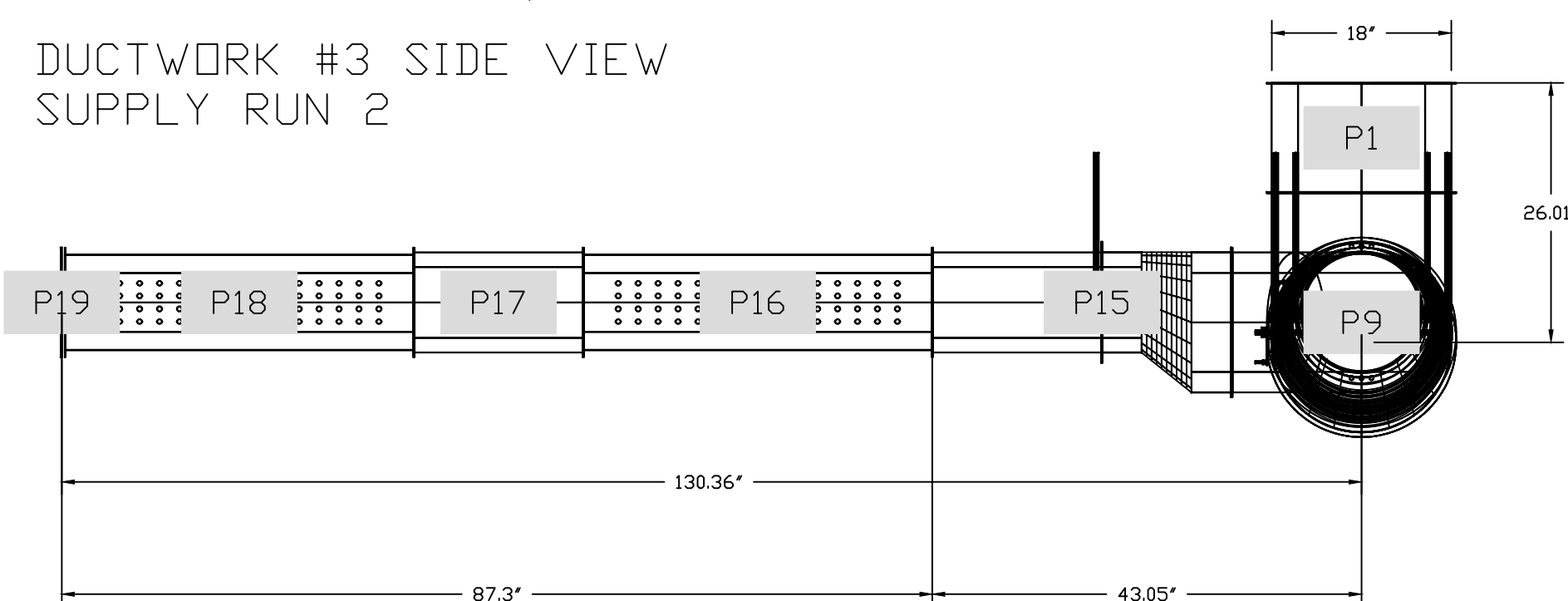
DUCTWORK #3 PARTS - JOB#4837527 SUPPLY RUN 2

TAG	PART #	CFM	GPM	ZONE	COVEREDBY	SP	THROW	WEIGHT	VELOCITY	QTY	DESCRIPTION
P1	DW1811LT-S	2050						4.66	1160.06	1	SINGLE WALL SUPPLY DUCT 18" DIAMETER, 11' LONG, FLANGE AT BOTH ENDS. STAINLESS STEEL.
P2	DW18TEASY-S	2050		1				15.17	1160.06	1	SINGLE WALL SUPPLY DUCT TEE, 18" DUCT, ASSEMBLY.
P3	DW1618ADPEC	1548						7.81	1108.64	1	SINGLE WALL DUCT ADAPTER, 16" DUCT DIA TO 18" DUCT DIA, ECCENTRIC ASSEMBLY.
P4	DW1619DAMPER-MNL	1548						0.00	1108.64	1	UNAVAILABLE PART OR IT IS MISSING FROM THE PARTS LIST.
P5	DW1644LT-S0	1548						16.59	1108.64	1	SINGLE WALL SUPPLY DUCT 16" DIAMETER, 44' LONG, FLANGE AT BOTH ENDS. STAINLESS STEEL.
P6	DW1617LT-S	1130						6.16	809.01	1	SINGLE WALL SUPPLY DUCT 16" DIAMETER, 17' LONG, FLANGE AT BOTH ENDS. STAINLESS STEEL.
P7	HF3-LG-20FT-EACH							2.00		1	SUPPLY DUCT CABLE SUSPENSION SYSTEM - UL APPROVED - GRIPPLE NO.3 (200 LBS) SINGLE LOOP HANGER - GALVANIZED STEEL.
P8	DW1416ADPEC	1130						7.50	1056.67	1	SINGLE WALL DUCT ADAPTER, 14" DUCT DIA TO 16" DUCT DIA, ECCENTRIC ASSEMBLY.
P9	DW1429LT-S0	1130						9.08	1056.67	1	SINGLE WALL SUPPLY DUCT 14" DIAMETER, 29' LONG, FLANGE AT BOTH ENDS. STAINLESS STEEL.
P10	DW1417LT-S	879						5.48	821.85	1	SINGLE WALL SUPPLY DUCT 14" DIAMETER, 17' LONG, FLANGE AT BOTH ENDS. STAINLESS STEEL.
P11	DW1429LT-S0	879						9.08	821.85	1	SINGLE WALL SUPPLY DUCT 14" DIAMETER, 29' LONG, FLANGE AT BOTH ENDS. STAINLESS STEEL.
P12	DW1490ASY-S	628						7.08	587.04	1	SINGLE WALL SUPPLY DUCT 90 DEGREE ELBOW, 14" DUCT, ASSEMBLY.
P13	DW1014ADPEC	628						6.17	1150.59	1	SINGLE WALL DUCT ADAPTER, 10" DUCT DIA TO 14" DUCT DIA, ECCENTRIC ASSEMBLY.
P14	DW1017LT-S	628						3.85	1150.59	1	SINGLE WALL SUPPLY DUCT 10" DIAMETER, 17' LONG, FLANGE AT BOTH ENDS. STAINLESS STEEL.
P15	HF3-LG-20FT-EACH							2.00		1	SUPPLY DUCT CABLE SUSPENSION SYSTEM - UL APPROVED - GRIPPLE NO.3 (200 LBS) SINGLE LOOP HANGER - GALVANIZED STEEL.
P16	DW1035LT-S0	628						7.85	1150.59	1	SINGLE WALL SUPPLY DUCT 10" DIAMETER, 35' LONG, FLANGE AT BOTH ENDS. STAINLESS STEEL.
P17	DW1017LT-S	314						3.85	575.30	1	SINGLE WALL SUPPLY DUCT 10" DIAMETER, 17' LONG, FLANGE AT BOTH ENDS. STAINLESS STEEL.
P18 ASSEMBLED W/P19	DW1035LT-S0	314						7.85	575.30	1	SINGLE WALL SUPPLY DUCT 10" DIAMETER, 35' LONG, FLANGE AT BOTH ENDS. STAINLESS STEEL.
P19 ASSEMBLED W/P18	DW1011AD							1.29		1	DUCT ACCESS DOOR WITH HANDLE, FOR 10" DUCT USE 11" DOOR. STAINLESS STEEL.
P20	DW1218ADPEC	502						8.04	639.22	1	SINGLE WALL DUCT ADAPTER, 12" DUCT DIA TO 18" DUCT DIA, ECCENTRIC ASSEMBLY.
P21	DW1215DAMPER-MNL	502						0.00	639.22	1	UNAVAILABLE PART OR IT IS MISSING FROM THE PARTS LIST.
P22	DW1229LT-S0	502						7.79	639.22	1	SINGLE WALL SUPPLY DUCT 12" DIAMETER, 29' LONG, FLANGE AT BOTH ENDS. STAINLESS STEEL.
P23	DW1230AJDKIT	251						15.04	319.61	1	SINGLE WALL DUCT ADJUSTABLE, 12" DIAMETER, 29.5' LONG, FLANGE AT ONE END WITH A 12" ADJUSTABLE COLLAR - STAINLESS STEEL.
P24 ASSEMBLED W/P25	DW1229LT-S0	251						7.79	319.61	1	SINGLE WALL SUPPLY DUCT 12" DIAMETER, 29' LONG, FLANGE AT BOTH ENDS. STAINLESS STEEL.
P25 ASSEMBLED W/P24	DW1213AD							1.80		1	DUCT ACCESS DOOR WITH HANDLE, FOR 12" DUCT USE 13" DOOR. STAINLESS STEEL.
P26	HF3-LG-20FT-EACH							2.00		1	SUPPLY DUCT CABLE SUSPENSION SYSTEM - UL APPROVED - GRIPPLE NO.3 (200 LBS) SINGLE LOOP HANGER - GALVANIZED STEEL.
	20100MNE+9485PC-BLACK							0.50		2	SUPPLY DUCT GASKET - LIGHT DUTY BLENDED EPDM FOAM GASKET - 20100MNE + 9485PC BLACK 1/8" X 1/2" X 50'.
	DW10CLASY							0.82		5	DUCT *V* CLAMP WITH NEW DESIGN 14 GA BRACKETS, 10" DUCT, ASSEMBLY.
	DW12CLASY							0.94		5	DUCT *V* CLAMP WITH NEW DESIGN 14 GA BRACKETS, 12" DUCT, ASSEMBLY.
	DW14CLASY							1.06		5	DUCT *V* CLAMP WITH NEW DESIGN 14 GA BRACKETS, 14" DUCT, ASSEMBLY.
	DW16CLASY							1.18		4	DUCT *V* CLAMP WITH NEW DESIGN 14 GA BRACKETS, 16" DUCT, ASSEMBLY.
	DW18CLASY							1.30		4	DUCT *V* CLAMP WITH NEW DESIGN 14 GA BRACKETS, 18" DUCT, ASSEMBLY.
TOTAL WEIGHT								190.95			

DUCTWORK #3 FRONT VIEW
SUPPLY RUN 2



DUCTWORK #3 SIDE VIEW
SUPPLY RUN 2



REVISIONS

DESCRIPTION	DATE

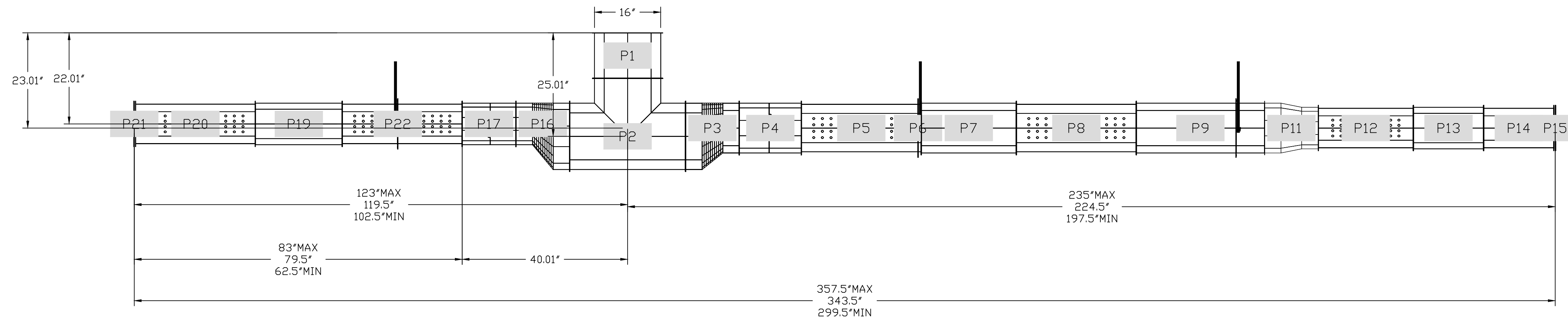
Mi Casa 3100 Price Hill
3100 Price Ave,
Cincinnati, OH, 45205

DATE: 8/24/2021
DWG.#: 4837527
DRAWN BY: jcirilli
SCALE: 3/4" = 1'-0"
MASTER DRAWING

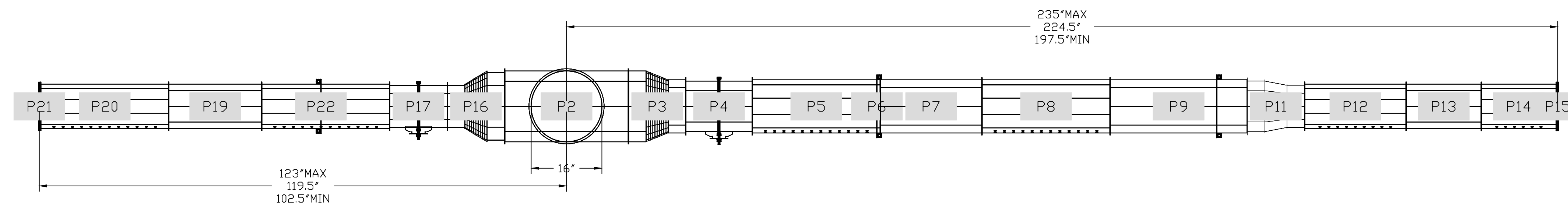
DUCTWORK #4 PARTS – JOB#4837527 SUPPLY RUN 3

TAG	PART #	CFM	GPM	ZONE	COVEREDBY	SP	THROW	WEIGHT	VELOCITY	QTY	DESCRIPTION
P1	DW1611LT-S	1500						4.11	1074.30	1	SINGLE WALL SUPPLY DUCT 16" DIAMETER, 11' LONG, FLANGE AT BOTH ENDS. STAINLESS STEEL.
P2	DW16TEASY-S	1500		1				12.82	1074.30	1	SINGLE WALL SUPPLY DUCT TEE, 16" DUCT, ASSEMBLY.
P3	DW1216ADPEC	929						6.56	1182.29	1	SINGLE WALL DUCT ADAPTER, 12" DUCT DIA TO 16" DUCT DIA, ECCENTRIC ASSEMBLY.
P4	DW1215DAMPER-MNL	929						0.00	1182.29	1	UNAVAILABLE PART OR IT IS MISSING FROM THE PARTS LIST.
P5	DW1229LT-S0	929				2.8047	351.9963	7.79	1182.29	1	SINGLE WALL SUPPLY DUCT 12" DIAMETER, 29' LONG, FLANGE AT BOTH ENDS. STAINLESS STEEL.
P6	HF3-LG-20FT-EACH							2.00		1	SUPPLY DUCT CABLE SUSPENSION SYSTEM - UL APPROVED - GRIPPLE NO.3 (200 LBS) SINGLE LODP HANGER - GALVANIZED STEEL.
P7	DW1223LT-S	643						6.27	818.51	1	SINGLE WALL SUPPLY DUCT 12" DIAMETER, 23' LONG, FLANGE AT BOTH ENDS. STAINLESS STEEL.
P8	DW1229LT-S0	643				2.7947	351.366	7.79	818.51	1	SINGLE WALL SUPPLY DUCT 12" DIAMETER, 29' LONG, FLANGE AT BOTH ENDS. STAINLESS STEEL.
P9	DW1248AJDKIT	357						22.74	454.73	1	SINGLE WALL DUCT ADJUSTABLE, 12" DIAMETER, 47.5" LONG, FLANGE AT ONE END WITH A 12" ADJUSTABLE COLLAR - STAINLESS STEEL.
P10	HF3-LG-20FT-EACH							2.00		1	SUPPLY DUCT CABLE SUSPENSION SYSTEM - UL APPROVED - GRIPPLE NO.3 (200 LBS) SINGLE LODP HANGER - GALVANIZED STEEL.
P11	DW1012ADP	357						6.17	654.81	1	SINGLE WALL DUCT ADAPTER, 10" DUCT DIA TO 12" DUCT DIA, ASSEMBLY.
P12	DW1023LT-S0	357				2.7877	350.9242	5.13	654.81	1	SINGLE WALL SUPPLY DUCT 10" DIAMETER, 23' LONG, FLANGE AT BOTH ENDS. STAINLESS STEEL.
P13	DW1017LT-S	143						3.85	261.92	1	SINGLE WALL SUPPLY DUCT 10" DIAMETER, 17' LONG, FLANGE AT BOTH ENDS. STAINLESS STEEL.
P14 ASSEMBLED W/P15	DW1017LT-S0	143				2.7857	350.7978	3.85	261.92	1	SINGLE WALL SUPPLY DUCT 10" DIAMETER, 17' LONG, FLANGE AT BOTH ENDS. STAINLESS STEEL.
P15 ASSEMBLED W/P14	DW1011AD							1.29		1	DUCT ACCESS DOOR WITH HANDLE, FOR 10" DUCT USE 11" DOOR. STAINLESS STEEL.
P16	DW1016ADPEC	571						0.00	1047.69	1	UNAVAILABLE PART OR IT IS MISSING FROM THE PARTS LIST.
P17	DW1013DAMPER-MNL	571						0.00	1047.69	1	UNAVAILABLE PART OR IT IS MISSING FROM THE PARTS LIST.
P18	DW1029LT-S0	571				2.7957	351.4291	6.50	1047.69	1	SINGLE WALL SUPPLY DUCT 10" DIAMETER, 29' LONG, FLANGE AT BOTH ENDS. STAINLESS STEEL.
P19	DW1030AJDKIT	286						12.22	523.85	1	SINGLE WALL DUCT ADJUSTABLE, 10" DIAMETER, 29.5" LONG, FLANGE AT ONE END WITH A 10" ADJUSTABLE COLLAR - STAINLESS STEEL.
P20 ASSEMBLED W/P21	DW1029LT-S0	286				2.7877	350.9242	6.50	523.85	1	SINGLE WALL SUPPLY DUCT 10" DIAMETER, 29' LONG, FLANGE AT BOTH ENDS. STAINLESS STEEL.
P21 ASSEMBLED W/P20	DW1011AD							1.29		1	DUCT ACCESS DOOR WITH HANDLE, FOR 10" DUCT USE 11" DOOR. STAINLESS STEEL.
P22	HF3-LG-20FT-EACH							2.00		1	SUPPLY DUCT CABLE SUSPENSION SYSTEM - UL APPROVED - GRIPPLE NO.3 (200 LBS) SINGLE LODP HANGER - GALVANIZED STEEL.
	20100MNE+9485PC-BLACK							0.50		2	SUPPLY DUCT GASKET - LIGHT DUTY BLENDED EPDM FOAM GASKET - 20100MNE + 9485PC BLACK 1/8" X 1/2" X 50'.
	DW10CLASY							0.82		9	DUCT *V* CLAMP WITH NEW DESIGN 14 GA BRACKETS, 10" DUCT, ASSEMBLY.
	DW12CLASY							0.94		6	DUCT *V* CLAMP WITH NEW DESIGN 14 GA BRACKETS, 12" DUCT, ASSEMBLY.
	DW16CLASY							1.18		4	DUCT *V* CLAMP WITH NEW DESIGN 14 GA BRACKETS, 16" DUCT, ASSEMBLY.
TOTAL WEIGHT								139.62			

DUCTWORK #4 FRONT VIEW
SUPPLY RUN 3



DUCTWORK #4 TOP VIEW
SUPPLY RUN 3



REVISIONS	
DESCRIPTION	DATE



 www.captiveair.com
 Air Solutions
 1329 East Kemper Rd., Ste. 4210, Cincinnati, OH, 45216 PHONE: (513) 860-5555 EMAIL: req12@captivair.com

Mi Casa 3100 Price Hill
 3100 Price Ave,
 Cincinnati, OH, 45205

DATE: 8/24/2021
DWG.#: 4837527
DRAWN BY: jcirilli
SCALE: 3/4" = 1'-0"
MASTER DRAWING

SHEET NO.
 7