

HOOD INFORMATION - JOB#4837527

HOOD NO	TAG	MODEL	MANUFACTURER	LENGTH	MAX CQNG TEMP	TYPE	APPLNCE DUTY	DESIGN CFM/FT	TOTAL EKH CFM	EXHAUST SCREEN (SCREENS)	HOOD CONSTRUCTION	END TO END ROW
1	HD 1	5412 SMO-2	CAPTIVE/ARE	15' 10"	600 DEG	1	HEAVY	206	2662	4'	14' 1631	1536
											430 SS	ALDNE

HOOD INFORMATION - FILTERS

HOOD NO	TAG	TYPE	QTY	HEIGHT	LENGTH	EFFICIENCY @ 7 MICRONS	QTY	TYPE	WIRE GUARD	LOCATION	SIZE	TYPE	UTILITY CABINET(S)	ELECTRICAL	SWITCHES	FIRE SYSTEM	HOOD WEIGHT (LBS)
1	HD 1	SS BAFFLE WITH HANDLES	12	16"	16'	30%	6	LSS SERIES E26	NO							YES	799

HOOD OPTIONS

HOOD NO	TAG	FIELD	WRAPPER	16.00"	HIGH	FRONT, LEFT, RIGHT
BACSGRASH 113.00" HIGH X 228.00" LONG 430 SS VERTICAL. BACSGRASH 114.00" HIGH X 18.00" LONG 430 SS VERTICAL. BACSGRASH 114.00" HIGH X 18.00" LONG 430 SS VERTICAL. BACSGRASH - INSIDE CORNER 66.00" HIGH X 2.00" LEG LENGTH 430 SS VERTICAL. BACSGRASH - INSIDE CORNER 66.00" HIGH X 2.00" LEG LENGTH 430 SS VERTICAL. BACSGRASH - INSIDE CORNER 66.00" HIGH X 2.00" LEG LENGTH 430 SS VERTICAL. RIGHT END STANDBY (CFM/VS) 1" WIDE 54" LONG INSULATED LEFT END STANDBY (CFM/VS) 1" WIDE 54" LONG INSULATED RIGHT QUARTER END PANEL 27" TOP WIDTH, 0" BOTTOM WIDTH, 27" HIGH 430 SS LEFT QUARTER END PANEL 27" TOP WIDTH, 0" BOTTOM WIDTH, 27" HIGH 430 SS INSULATION FOR TOP OF HOOD. INSULATION FOR BACK OF HOOD. SENSER-CV.						

DOAS/RTU FAN SCHEDULE - JOB#4837527

UNIT NO	TAG	QTY	MANUFACTURER	CFM	ESP	RPM	MOTOR ENCL	HP	BHP	PHASE	VOLT	FLA	DISCHARGE VELOCITY	WEIGHT (LBS)	SONES
1	KEF 1	1	US180DR-RM	3862	1.400	1463	DIP-PREMIUM	3.000	1.7280	3	208	9.5	1672 FPM	438	23
3	KEF2-DVN	1	DUJ3-FA	500	0.450	1215	TEAD-ECM	0.333	0.1080	1	115	4.3	297 FPM	63	10.2
4	EF3-WEN	1	CF4-S10-CA	75	0.200	938	GENERALPURPOSE	0.042	0.0280	1	115	0.3		12	3.3
5	EF4-WDMEN	1	CF4-S10-CA	CAPTIVE/ARE	75	0.200	938	GENERALPURPOSE	0.042	0.0280	1	115	0.3	12	3.3

DOAS/RTU FAN SCHEDULE - JOB#4837527

UNIT NO	TAG	QTY	MANUFACTURER	CFM	ESP	RPM	MOTOR ENCL	HP	BHP	PHASE	VOLT	FLA	DISCHARGE VELOCITY	WEIGHT (LBS)	SONES
2	DDAS-RTU1	1	CASRTU3-1500-20-151-DDAS	CAPTIVE/ARE	20P-3	738		4.012	4.750	3	208	70.9A	80A	2519	

DOAS/RTU COOLING SCHEDULE

FAN UNIT NO	TAG	COMPRESSOR	OUTDOOR FAN	INDOOR COIL	FACE AREA	OUTSIDE AIR DB TEMP	OUTSIDE AIR WB TEMP	MIXED AIR DB TEMP	MIXED AIR WB TEMP	LEAVING DB TEMP	LEAVING WB TEMP	TOTAL CAPACITY	SENSIBLE CAPACITY	LATENT CAPACITY	REHEAT LEAVING DB TEMP	REHEAT LEAVING WB TEMP	DESIRED REHEAT CAPACITY	MAX REHEAT CAPACITY	REHEAT HUMIDITY RATIO	HEER
2	DDAS-RTU1	15	19P-240	3	200-240	60	74.0F	70.6F	60.6F	58.4F	57.1F	185.0 MBH	118.3 MBH	67.7 MBH	71.0F	62.1F	53.3 MBH	129.6 MBH	61	61.5 LBS/HR

DOAS/RTU HEATING SCHEDULE

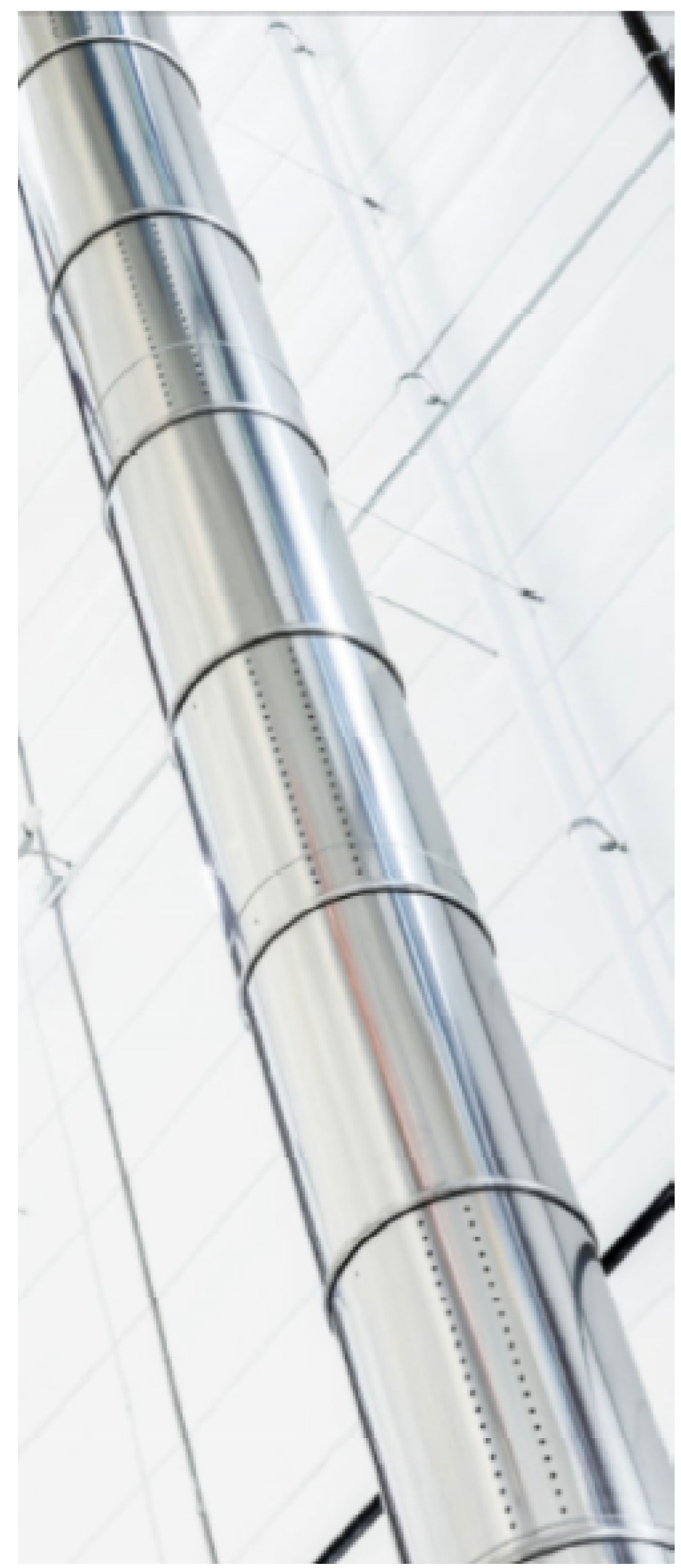
FAN UNIT NO	TAG	INPUT DUCT/RTU	TEMP RISE	REQUIRED INPUT GAS PRESSURE	GAS TYPE	BURNER EFF (EFFECTIVE)
2	DDAS-RTU1	490/99	392/159	70F	7 IN. W.C. - 14 IN. W.C.	NATURAL

FAN ACCESSORIES

FAN UNIT NO	TAG	EXHAUST	SUPPLY
1	KEF 1	GRAVEST GRAPITY CAP DAMPER	WALL DISCHARGE DAMPER
3	KEF DVN	WALL DISCHARGE DAMPER	MOTORIZED WALL DAMPER

AIR DEVIATE SCHEDULE

TAG	MODEL	SIZE	RETURN GRILLE	ALUMINUM	1/2" X 1/2" X 1/2" GRID CORE	FRAME AND BORDER FOR SURFACE MOUNTING.
RTU/1						



SUPPLY DUCT DETAIL

AR BALANCE SCHEDULE

TAG	ROOM SERVED	O.A. CFM	EXHAUST CFM
KEF1	KITCHEN HOODS	-	- 2382
KEF2	OPEN	-	- 200
EF3	MEN'S RESTROOM	-	- 75
EF4	WOMEN'S RESTROOM	-	- 75
DOAS/RTU (1)	KITCHEN/DINING	+ 402	
		+ 100 CFM	

KITCHEN TO MAINTAIN A SLIGHTLY NEGATIVE PRESSURE OVERALL BUILDING PRESSURE TO BE BETWEEN -0.02" TO -0.07" WC PER AISC COMMERICAL RECOMMENDATIONS

(1) DOAS UNIT IS A SPECIALTY DESIGNED UNIT THAT CONDITIONS THE ENTIRE SPACE & SUPPLIES AIR TO ROOMS. IT IS NOT A STANDARD UNIT. IT IS NOT TO BE INSTALLED IN THE KITCHEN. THE OUTSIDE AIR DAMPER IS INTERLOCK WITH HOOD SYSTEM TO OPEN UP WHEN HOOD EXHAUST FAN IS ON.

FireMaster® FastWira® XL Commercial Kitchen Grease Duct Enclosure System Air Ventilation Duct Enclosure System 1 or 2 Hour Shaft Alternative / Zero Clearance to Combustibles

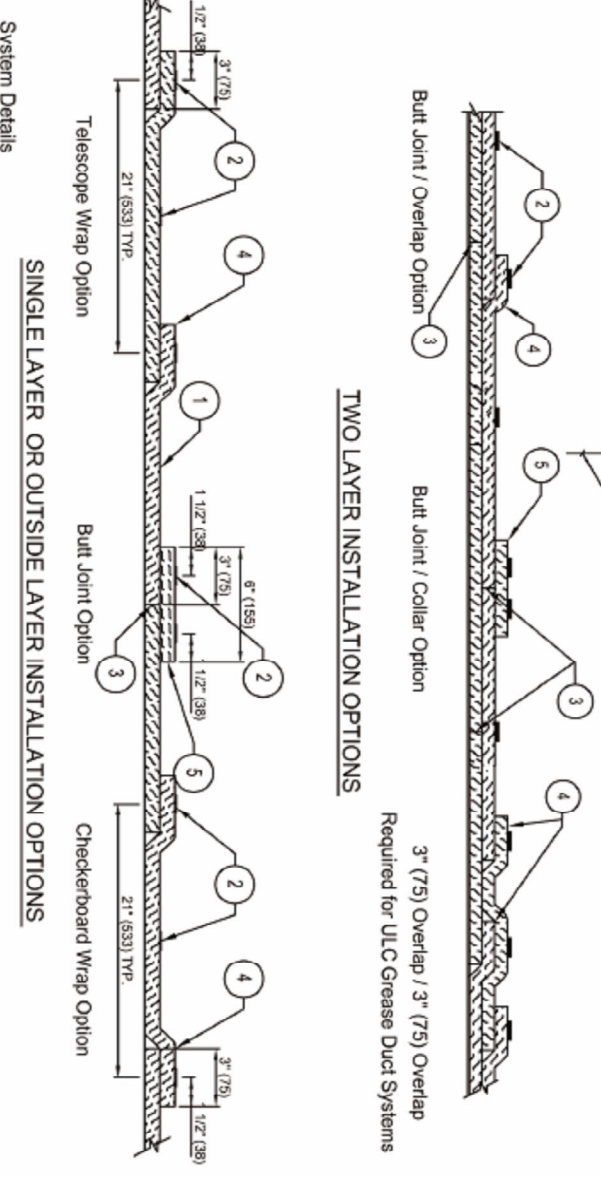
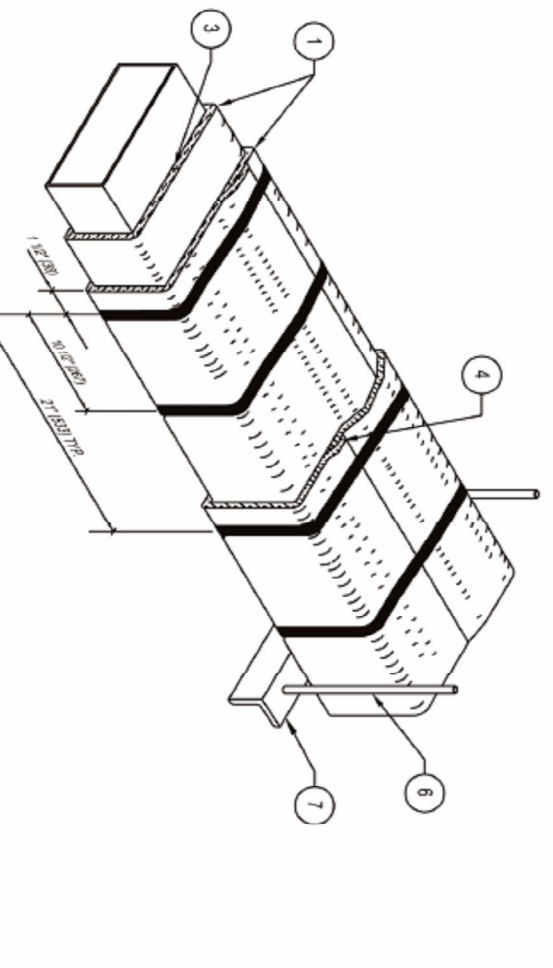


FIGURE 1

- Two Layers of FireMaster® FastWira® XL Barrier for Grease Duct Enclosures
- One Layer of FireMaster® FastWira® XL Barrier for Air Ventilation Duct Enclosures
- Light wall joint on inner layer (L.C. Grease Duct requires 3" (75) overlap)
- Min. 3" (75) overlap on perimeter and between adjacent channels on outside layer
- Options of FireMaster® FastWira® XL color
- 1-Hour Rating
- 2-Hour Rating
- 3-Hour Rating
- 4-Hour Rating
- 5-Hour Rating
- 6-Hour Rating
- 7-Hour Rating
- 8-Hour Rating
- 9-Hour Rating
- 10-Hour Rating
- 11-Hour Rating
- 12-Hour Rating
- 13-Hour Rating
- 14-Hour Rating
- 15-Hour Rating
- 16-Hour Rating
- 17-Hour Rating
- 18-Hour Rating
- 19-Hour Rating
- 20-Hour Rating
- 21-Hour Rating
- 22-Hour Rating
- 23-Hour Rating
- 24-Hour Rating
- 25-Hour Rating
- 26-Hour Rating
- 27-Hour Rating
- 28-Hour Rating
- 29-Hour Rating
- 30-Hour Rating
- 31-Hour Rating
- 32-Hour Rating
- 33-Hour Rating
- 34-Hour Rating
- 35-Hour Rating
- 36-Hour Rating
- 37-Hour Rating
- 38-Hour Rating
- 39-Hour Rating
- 40-Hour Rating
- 41-Hour Rating
- 42-Hour Rating
- 43-Hour Rating
- 44-Hour Rating
- 45-Hour Rating
- 46-Hour Rating
- 47-Hour Rating
- 48-Hour Rating
- 49-Hour Rating
- 50-Hour Rating
- 51-Hour Rating
- 52-Hour Rating
- 53-Hour Rating
- 54-Hour Rating
- 55-Hour Rating
- 56-Hour Rating
- 57-Hour Rating
- 58-Hour Rating
- 59-Hour Rating
- 60-Hour Rating
- 61-Hour Rating
- 62-Hour Rating
- 63-Hour Rating
- 64-Hour Rating
- 65-Hour Rating
- 66-Hour Rating
- 67-Hour Rating
- 68-Hour Rating
- 69-Hour Rating
- 70-Hour Rating
- 71-Hour Rating
- 72-Hour Rating
- 73-Hour Rating
- 74-Hour Rating
- 75-Hour Rating
- 76-Hour Rating
- 77-Hour Rating
- 78-Hour Rating
- 79-Hour Rating
- 80-Hour Rating
- 81-Hour Rating
- 82-Hour Rating
- 83-Hour Rating
- 84-Hour Rating
- 85-Hour Rating
- 86-Hour Rating
- 87-Hour Rating
- 88-Hour Rating
- 89-Hour Rating
- 90-Hour Rating
- 91-Hour Rating
- 92-Hour Rating
- 93-Hour Rating
- 94-Hour Rating
- 95-Hour Rating
- 96-Hour Rating
- 97-Hour Rating
- 98-Hour Rating
- 99-Hour Rating
- 100-Hour Rating

The Weight of FireMaster and FastWira is listed in the table below.

Product	Weight (lb/ft)	Weight (lb/ft)	Weight (lb/ft)	Weight (lb/ft)	Weight (lb/ft)
Grease Duct - per ULTC Product	Min. 2.7(50) X 2.5(50) X 1.1(16) @ 1/2" depth	Min. 2.7(50) X 2.5(50) X 1.1(16) @ 1/2" depth	Min. 2.7(50) X 2.5(50) X 1.1(16) @ 1/2" depth	Min. 2.7(50) X 2.5(50) X 1.1(16) @ 1/2" depth	Min. 2.7(50) X 2.5(50) X 1.1(16) @ 1/2" depth
Grease Duct - per ULTC Product	Min. 2.7(50) X 2.5(50) X 1.1(16) @ 1/2" depth	Min. 2.7(50) X 2.5(50) X 1.1(16) @ 1/2" depth	Min. 2.7(50) X 2.5(50) X 1.1(16) @ 1/2" depth	Min. 2.7(50) X 2.5(50) X 1.1(16) @ 1/2" depth	Min. 2.7(50) X 2.5(50) X 1.1(16) @ 1/2" depth
Grease Duct - per ULTC Product	Min. 2.7(50) X 2.5(50) X 1.1(16) @ 1/2" depth	Min. 2.7(50) X 2.5(50) X 1.1(16) @ 1/2" depth	Min. 2.7(50) X 2.5(50) X 1.1(16) @ 1/2" depth	Min. 2.7(50) X 2.5(50) X 1.1(16) @ 1/2" depth	Min. 2.7(50) X 2.5(50) X 1.1(16) @ 1/2" depth
Grease Duct - per ULTC Product	Min. 2.7(50) X 2.5(50) X 1.1(16) @ 1/2" depth	Min. 2.7(50) X 2.5(50) X 1.1(16) @ 1/2" depth	Min. 2.7(50) X 2.5(50) X 1.1(16) @ 1/2" depth	Min. 2.7(50) X 2.5(50) X 1.1(16) @ 1/2" depth	Min. 2.7(50) X 2.5(50) X 1.1(16) @ 1/2" depth
Grease Duct - per ULTC Product	Min. 2.7(50) X 2.5(50) X 1.1(16) @ 1/2" depth	Min. 2.7(50) X 2.5(50) X 1.1(16) @ 1/2" depth	Min. 2.7(50) X 2.5(50) X 1.1(16) @ 1/2" depth	Min. 2.7(50) X 2.5(50) X 1.1(16) @ 1/2" depth	Min. 2.7(50) X 2.5(50) X 1.1(16) @ 1/2" depth
Grease Duct - per ULTC Product	Min. 2.7(50) X 2.5(50) X 1.1(16) @ 1/2" depth	Min. 2.7(50) X 2.5(50) X 1.1(16) @ 1/2" depth	Min. 2.7(50) X 2.5(50) X 1.1(16) @ 1/2" depth	Min. 2.7(50) X 2.5(50) X 1.1(16) @ 1/2" depth	Min. 2.7(50) X 2.5(50) X 1.1(16) @ 1/2" depth
Grease Duct - per ULTC Product	Min. 2.7(50) X 2.5(50) X 1.1(16) @ 1/2" depth	Min. 2.7(50) X 2.5(50) X 1.1(16) @ 1/2" depth	Min. 2.7(50) X 2.5(50) X 1.1(16) @ 1/2" depth	Min. 2.7(50) X 2.5(50) X 1.1(16) @ 1/2" depth	Min. 2.7(50) X 2.5(50) X 1.1(16) @ 1/2" depth
Grease Duct - per ULTC Product	Min. 2.7(50) X 2.5(50) X 1.1(16) @ 1/2" depth	Min. 2.7(50) X 2.5(50) X 1.1(16) @ 1/2" depth	Min. 2.7(50) X 2.5(50) X 1.1(16) @ 1/2" depth	Min. 2.7(50) X 2.5(50) X 1.1(16) @ 1/2" depth	Min. 2.7(50) X 2.5(50) X 1.1(16) @ 1/2" depth
Grease Duct - per ULTC Product	Min. 2.7(50) X 2.5(50) X 1.1(16) @ 1/2" depth	Min. 2.7(50) X 2.5(50) X 1.1(16) @ 1/2" depth	Min. 2.7(50) X 2.5(50) X 1.1(16) @ 1/2" depth	Min. 2.7(50) X 2.5(50) X 1.1(16) @ 1/2" depth	Min. 2.7(50) X 2.5(50) X 1.1(16) @ 1/2" depth
Grease Duct - per ULTC Product	Min. 2.7(50) X 2.5(50) X 1.1(16) @ 1/2" depth	Min. 2.7(50) X 2.5(50) X 1.1(16) @ 1/2" depth	Min. 2.7(50) X 2.5(50) X 1.1(16) @ 1/2" depth	Min. 2.7(50) X 2.5(50) X 1.1(16) @ 1/2" depth	Min. 2.7(50) X 2.5(50) X 1.1(16) @ 1/2" depth
Grease Duct - per ULTC Product	Min. 2.7(50) X 2.5(50) X 1.1(16) @ 1/2" depth	Min. 2.7(50) X 2.5(50) X 1.1(16) @ 1/2" depth	Min. 2.7(50) X 2.5(50) X 1.1(16) @ 1/2" depth	Min. 2.7(50) X 2.5(50) X 1.1(16) @ 1/2" depth	Min. 2.7(50) X 2.5(50) X 1.1(16) @ 1/2" depth
Grease Duct - per ULTC Product	Min. 2.7(50) X 2.5(50) X 1.1(16) @ 1/2" depth	Min. 2.7(50) X 2.5(50) X 1.1(16) @ 1/2" depth	Min. 2.7(50) X 2.5(50) X 1.1(16) @ 1/2" depth	Min. 2.7(50) X 2.5(50) X 1.1(16) @ 1/2" depth	Min. 2.7(50) X 2.5(50) X 1.1(16) @ 1/2" depth
Grease Duct - per ULTC Product	Min. 2.7(50) X 2.5(50) X 1.1(16) @ 1/2" depth	Min. 2.7(50) X 2.5(50) X 1.1(16) @ 1/2" depth	Min. 2.7(50) X 2.5(50) X 1.1(16) @ 1/2" depth	Min. 2.7(50) X 2.5(50) X 1.1(16) @ 1/2" depth	Min. 2.7(50) X 2.5(50) X 1.1(16) @ 1/2" depth
Grease Duct - per ULTC Product	Min. 2.7(50) X 2.5(50) X 1.1(16) @ 1/2" depth	Min. 2.7(50) X 2.5(50) X 1.1(16) @ 1/2" depth	Min. 2.7(50) X 2.5(50) X 1.1(16) @ 1/2" depth	Min. 2.7(50) X 2.5(50) X 1.1(16) @ 1/2" depth	Min. 2.7(50) X 2.5(50) X 1.1(16) @ 1/2" depth
Grease Duct - per ULTC Product	Min. 2.7(50) X 2.5(50) X 1.1(16) @ 1/2" depth	Min. 2.7(50) X 2.5(50) X 1.1(16) @ 1/2" depth	Min. 2.7(50) X 2.5(50) X 1.1(16) @ 1/2" depth	Min. 2.7(50) X 2.5(50) X 1.1(16) @ 1/2" depth	Min. 2.7(50) X 2.5(50) X 1.1(16) @ 1/2" depth
Grease Duct - per ULTC Product	Min. 2.7(50) X 2.5(50) X 1.1(16) @ 1/2" depth	Min. 2.7(50) X 2.5(50) X 1.1(16) @ 1/2" depth	Min. 2.7(50) X 2.5(50) X 1.1(16) @ 1/2" depth	Min. 2.7(50) X 2.5(50) X 1.1(16) @ 1/2" depth	Min. 2.7(50) X 2.5(50) X 1.1(16) @ 1/2" depth
Grease Duct - per ULTC Product	Min. 2.7(50) X 2.5(50) X 1.1(16) @ 1/2" depth	Min. 2.7(50) X 2.5(50) X 1.1(16) @ 1/2" depth	Min. 2.7(50) X 2.5(50) X 1.1(16) @ 1/2" depth	Min. 2.7(50) X 2.5(50) X 1.1(16) @ 1/2" depth	Min. 2.7(50) X 2.5(50) X 1.1(16) @ 1/2" depth
Grease Duct - per ULTC Product	Min. 2.7(50) X 2.5(50) X 1.1(16) @ 1/2" depth	Min. 2.7(50) X 2.5(50) X 1.1(16) @ 1/2" depth	Min. 2.7(50) X 2.5(50) X 1.1(16) @ 1/2" depth	Min. 2.7(50) X 2.5(50) X 1.1(16) @ 1/2" depth	Min. 2.7(50) X 2.5(50) X 1.1(16) @ 1/2" depth
Grease Duct - per ULTC Product	Min. 2.7(50) X 2.5(50) X 1.1(16) @ 1/2" depth	Min. 2.7(50) X 2.5(50) X 1.1(16) @ 1/2" depth	Min. 2.7(50) X 2.5(50) X 1.1(16) @ 1/2" depth	Min. 2.7(50) X 2.5(50) X 1.1(16) @ 1/2" depth	Min. 2.7(50) X 2.5(50) X 1.1(16) @ 1/2" depth
Grease Duct - per ULTC Product	Min. 2.7(50) X 2.5(50) X 1.1(16) @ 1/2" depth	Min. 2.7(50) X 2.5(50) X 1.1(16) @ 1/2" depth	Min. 2.7(50) X 2.5(50) X 1.1(16) @ 1/2" depth	Min. 2.7(50) X 2.5(50) X 1.1(16) @ 1/2" depth	Min. 2.7(50) X 2.5(50) X 1.1(16) @ 1/2" depth
Grease Duct - per ULTC Product	Min. 2.7(50) X 2.5(50) X 1.1(16) @ 1/2" depth	Min. 2.7(50) X 2.5(50) X 1.1(16) @ 1/2" depth	Min. 2.7(50) X 2.5(50) X 1.1(16) @ 1/2" depth	Min. 2.7(50) X 2.5(50) X 1.1(16) @ 1/2" depth	Min. 2.7(50) X 2.5(50) X 1.1(16) @ 1/2" depth
Grease Duct - per ULTC Product	Min. 2.7(50) X 2.5(50) X 1.1(16) @ 1/2" depth	Min. 2.7(50) X 2.5(50) X 1.1(16) @ 1/2" depth	Min. 2.7(50) X 2.5(50) X 1.1(16) @ 1/2" depth	Min. 2.7(50) X 2.5(50) X 1.1(16) @ 1/2" depth	Min. 2.7(50) X 2.5(50) X 1.1(16) @ 1/2" depth
Grease Duct - per ULTC Product	Min. 2.7(50) X 2.5(50) X 1.1(16) @ 1/2" depth	Min. 2.7(50) X 2.5(50) X 1.1(16) @ 1/2" depth	Min. 2.7(50) X 2.5(50) X 1.1(16) @ 1/2" depth	Min. 2.7(50) X 2.5(50) X 1.1(16) @ 1/2" depth	Min. 2.7(50) X 2.5(50) X 1.1(16) @ 1/2" depth
Grease Duct - per ULTC Product	Min. 2.7(50) X 2.5(50) X 1.1(16) @ 1/2" depth	Min. 2.7(50) X 2.5(50) X 1.1(16) @ 1/2" depth	Min. 2.7(50) X 2.5(50) X 1.1(16) @ 1/2" depth	Min. 2.7(50) X 2.5(50) X 1.1(16) @ 1/2" depth	Min. 2.7(50) X 2.5(50) X 1.1(16) @ 1/2" depth
Grease Duct - per ULTC Product	Min. 2.7(50) X 2.5(50) X 1.1(16) @ 1/2" depth	Min. 2.7(50) X 2.5(50) X 1.1(16) @ 1/2" depth	Min. 2.7(50) X 2.5(50) X 1.1(16) @ 1/2" depth	Min. 2.7(50) X 2.5(50) X 1.1(16) @ 1/2" depth	Min. 2.7(50) X 2.5(50) X 1.1(16) @ 1/2" depth
Grease Duct - per ULTC Product	Min. 2.7(50) X 2.5(50) X 1.1(16) @ 1/2" depth	Min. 2.7(50) X 2.5(50) X 1.1(16) @ 1/2" depth	Min. 2.7(50) X 2.5(50) X 1.1(16) @ 1/2" depth	Min. 2.7(50) X 2.5(50) X 1.1(16) @ 1/2" depth	Min. 2.7(50) X 2.5(50) X 1.1(16) @ 1/2" depth
Grease Duct - per ULTC Product	Min. 2.7(50) X 2.5(50) X 1.1(16) @ 1/2" depth	Min. 2.7(50) X 2.5(50) X 1.1(16) @ 1/2" depth	Min. 2.7(50) X 2.5(50) X 1.1(16) @ 1/2" depth	Min. 2.7(50) X 2.5(50) X 1.1(16) @ 1/2" depth	Min. 2.7(50) X 2.5(50) X 1.1(16) @ 1/2" depth
Grease Duct - per ULTC Product	Min. 2.7(50) X 2.5(50				

DATE: 09/20/21

DRAWN BY: JAH

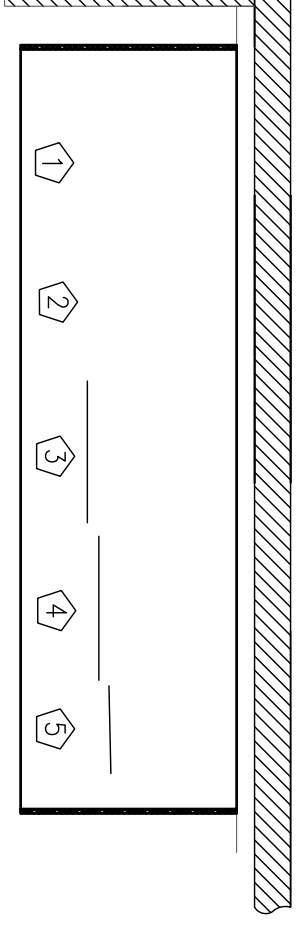
SCALE: NONE

REVISION: DATE

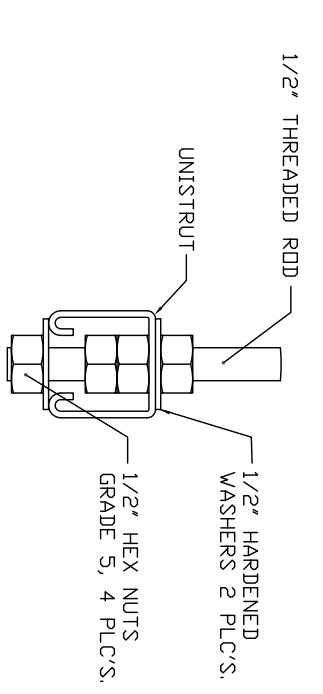
REVISION: DATE

- 1 Range
- 2 Griddle
- 3 Charbroiler
- 4 Electric Rotary
- 5 Gas Fryer

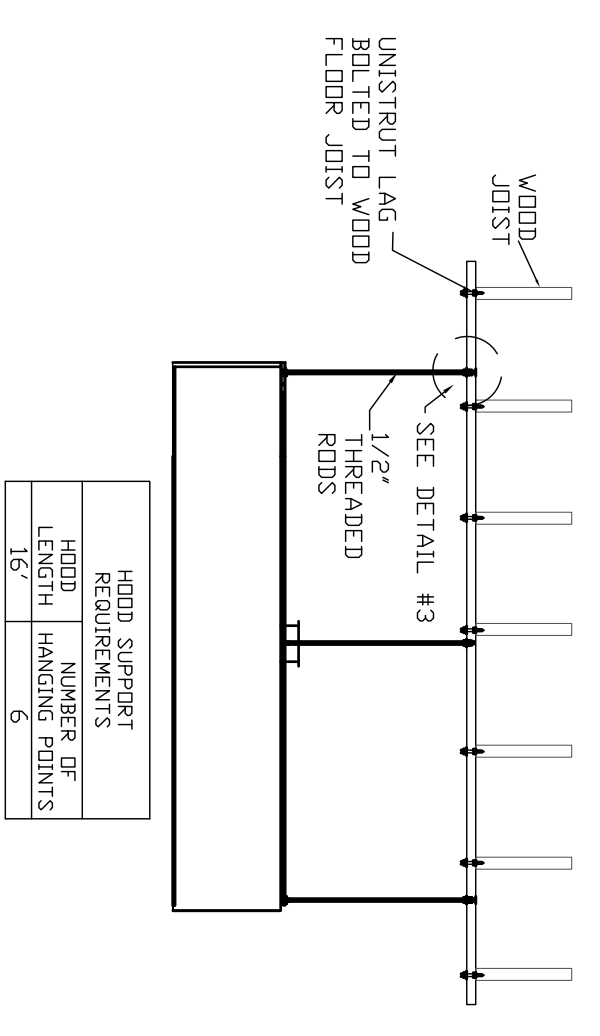
COOKING EQUIPMENT LAYOUT



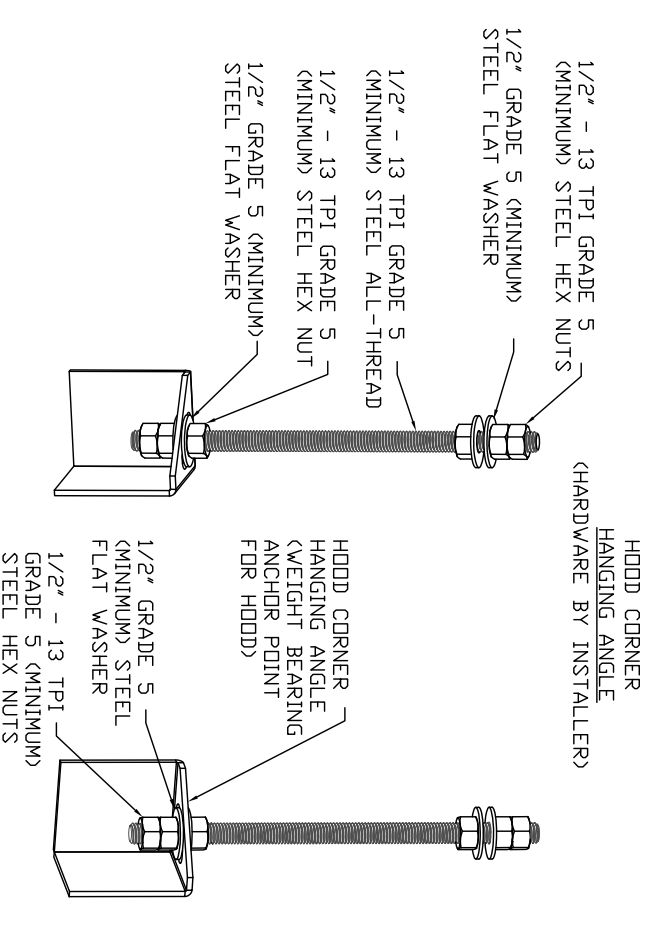
DETAIL #3: HANGING ROD TO UNISTRUT



DETAIL #2: HOOD SUPPORT

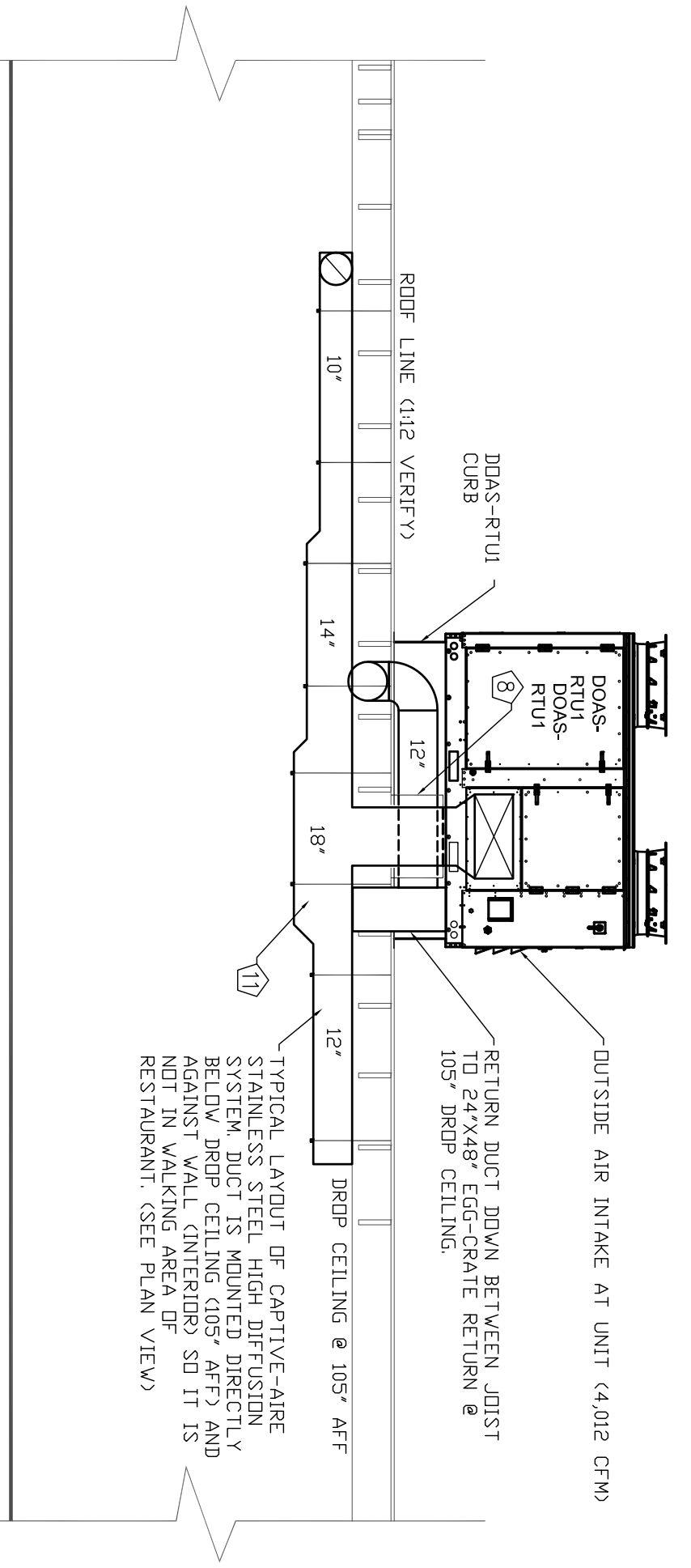


DETAIL #1: HOOD HANGING ASSEMBLY

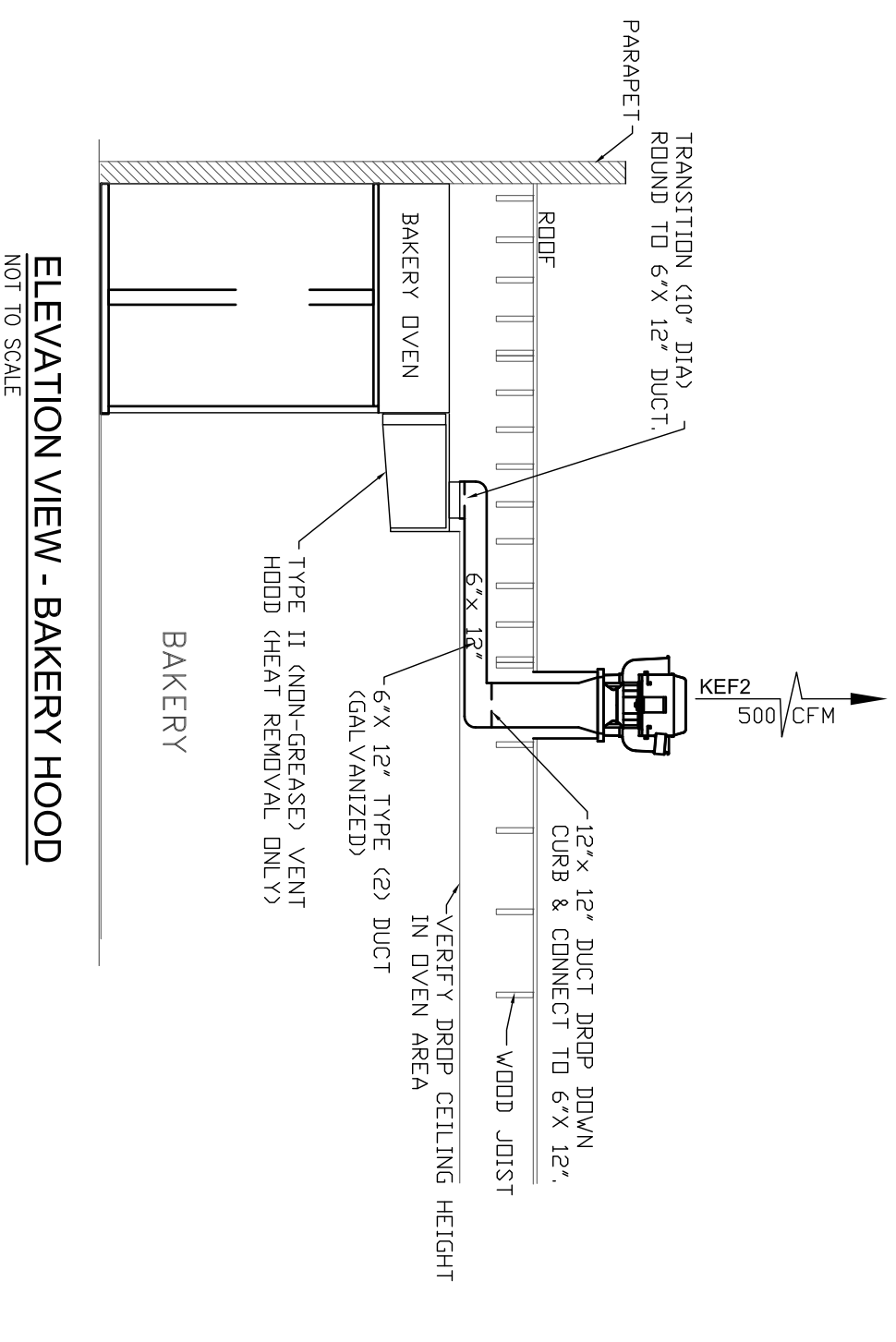


ASSEMBLY INSTRUCTIONS

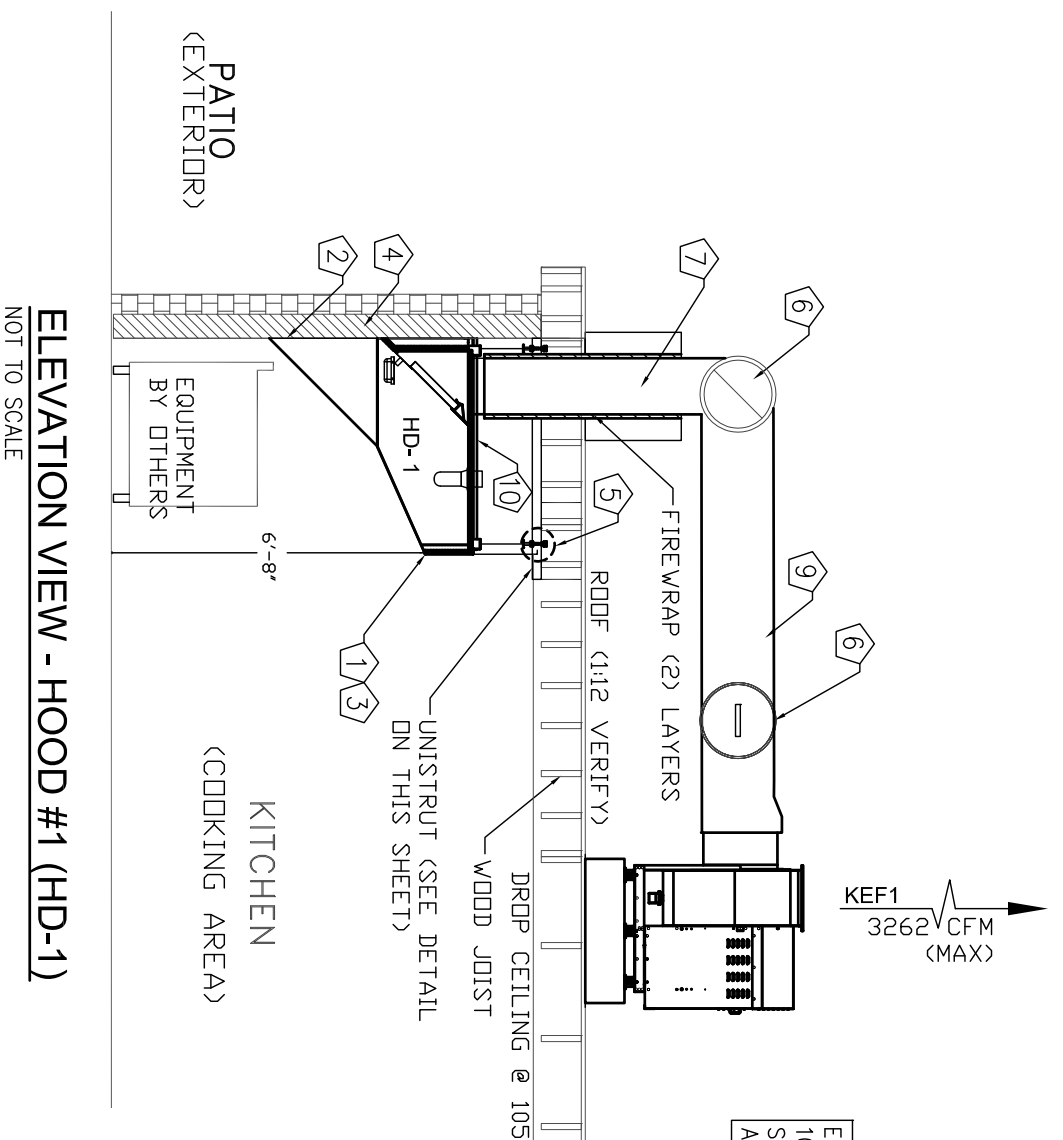
HANGING ANGLE MUST BE SUPPORTED WITH 1/2" - 13 TPI GRADE 5 (MINIMUM) ALL-THREAD, SANDWICH HANGING ANGLES AND CEILING ANCHOR POINTS WITH 1/2" GRADE 5 (MINIMUM) STEEL HEX NUTS AND 1/2" GRADE 5 (MINIMUM) STEEL FLAT WASHERS. SHOW MIN. USE DOUBLE HEX NUT CONFIGURATION BENEATH HOOD HANGING ANGLES AND ABOVE CEILING ANCHORS. MAINTAIN 1/4" OF EXPOSED THREADS BENEATH BOTTOM HEX NUT. TORQUE ALL HEX NUTS TO 57 FT-LBS.



DOAS-RTU SUPPLY DUCT SECTION DETAIL



ELEVATION VIEW - BAKERY HOOD

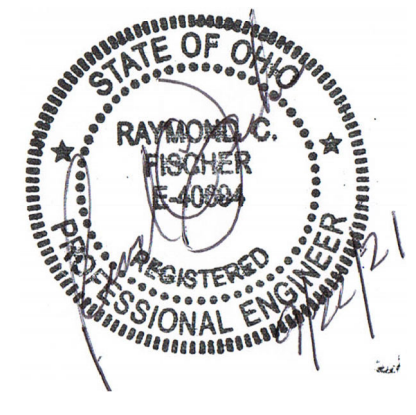


ELEVATION VIEW - HOOD #1 (HD-1)

KEY NOTES

- 1 CAPTIVE-AIRE ETL LISTED HOOD IN ACCORDANCE TO UL710 SEE CAPTIVE-AIRE SHOP DIMS.
- 2 STAINLESS STL WALL PANEL BELOW WALL & RIGHT & LEFT OF HOOD FROM FLOOR TO CEILING THE ENTIRE BACK WALL.
- 3 CANOPY TYPE HOOD TO OVERHANG ON FRONT BY 6" FROM COOKING SERVICE ON EXPOSED SIDES ONLY (SEE CAPTIVE-AIRE USING SHEET).
- 4 METAL STUD & SHEET ROCK WALL WITH STAINLESS STEEL PANELS.
- 5 HANGING ROD (SEE DETAILS #1, #2 & #3)
- 6 GREASE CLEANOUT DOOR (REMOVABLE BY HAND)
- 7 1\"/>
- 8 CURBS (QTY 3) ON ROOF FOR THE (3) SUPPLY DUCT DRIPS. SEE PLAN VIEW FOR DETAILS OF DRIP LOCATION.
- 9 18\"/>
- 10 TOP, LEFT & RIGHT SIDES OF HOOD TO BE FACTORY BUILT WITH ZERO-CLEARANCE TO COMBUSTIBLE LISTED RAINING ON HOOD.
- 11 SEE CAPTIVE-AIRE SUPPLY DUCT DETAIL ON PAGE H-2
- 12 ROUTE 6\"/>
- 13 GC TO HEAD OFT JOIST TO ALLOW EXHAUST DUCT TO GO STRAIGHT UP TO ROOF (QTY 2) OPENING TO BE 28.5 LONG.
- 14 TYPE II (NON-GREASE) 12\"/>

FISCHER ENGINEERING SERVICES, LLC
 MECHANICAL DESIGN & CONSULTING SERVICES
 3872 Nottingham Ct.
 Cinere, Ohio 45002
 Ph: 513-675-1599



MANAGED BY:
 AIR SOLUTIONS, INC.
 1329 E. KEMPER RD
 CINCINNATI, OH 45246
 PH: (513) 860-5555

MI CASA
 3100 PRICE AVENUE
 CINCINNATI, OH 45205
 NEW COMMERCIAL HOOD IN KITCHEN

SHEET NO: H-3