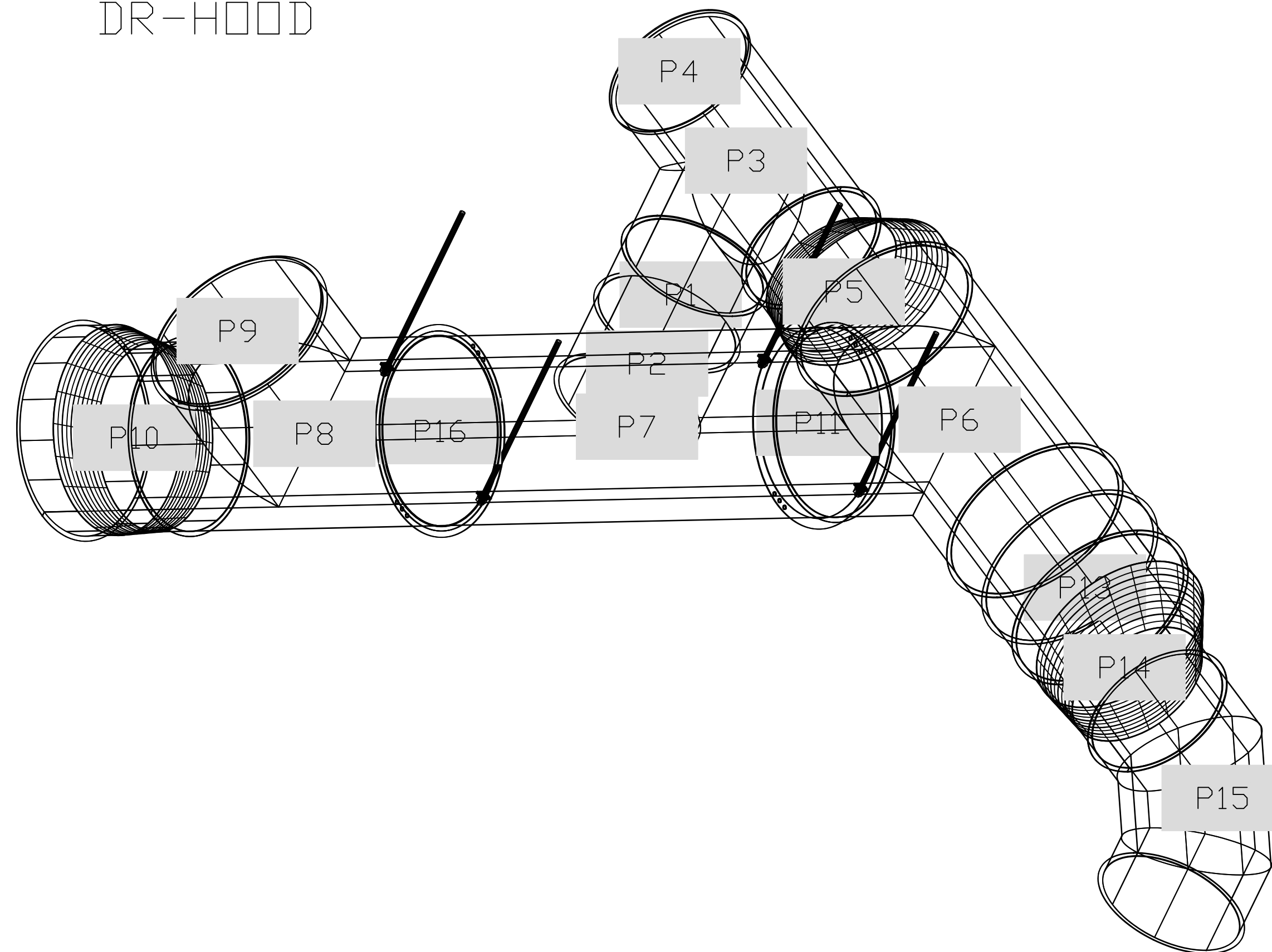


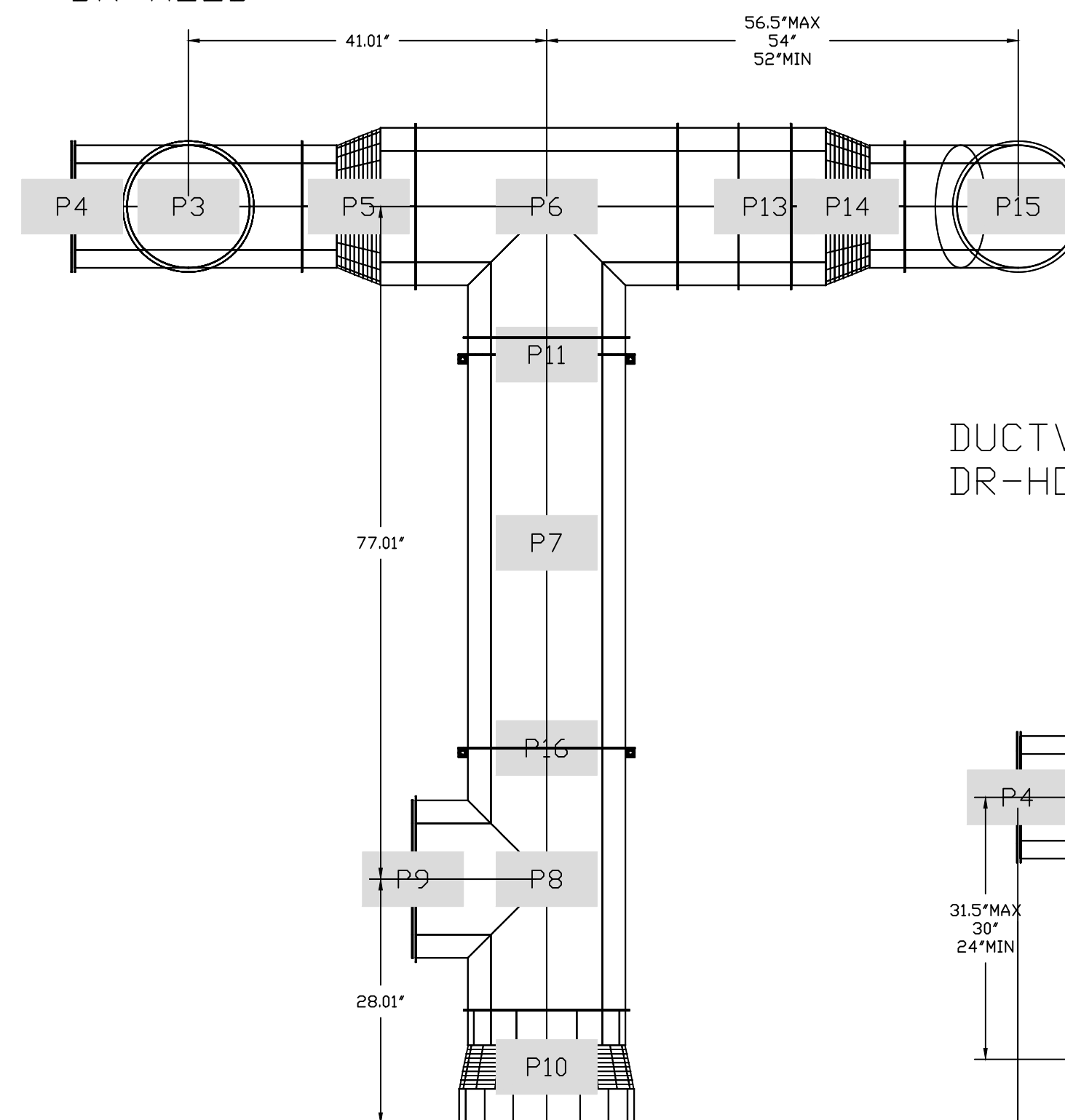
DUCTWORK #1 PARTS - JOB#5182610 DR-HOOD

TAG	PART #	CFM	GPM	ZONE	COVEREDBY	SP	WEIGHT	VELOCITY	QTY	DESCRIPTION
P1	DW1407LT						3.63		1	SINGLE WALL DUCT 14" DIAMETER, 7" LONG, FLANGE AT BOTH ENDS. STAINLESS STEEL.
P2	DW1418AJDKIT						11.56		1	SINGLE WALL DUCT ADJUSTABLE, 14" DIAMETER, 17.5" LONG, FLANGE AT ONE END WITH A 14" ADJUSTABLE COLLAR - STAINLESS STEEL.
P3 ASSEMBLED W/P4	DW14TEASY			1			15.95		1	SINGLE WALL DUCT TEE, 14" DUCT, ASSEMBLY.
P4 ASSEMBLED W/P3 D=S	DW1415ADKIT						3.72		1	DUCT ACCESS DOOR WITH HANDLE & GREASE DAM, FOR 14" DUCT USE 15" DOOR. STAINLESS STEEL.
P5	DW1418ADPEC						7.50		1	SINGLE WALL DUCT ADAPTER, 14" DUCT DIA TO 18" DUCT DIA, ECCENTRIC ASSEMBLY.
P6	DW18TEASY			1			22.75		1	SINGLE WALL DUCT TEE, 18" DUCT, ASSEMBLY.
P7	DW1847LT						28.24		1	SINGLE WALL DUCT 18" DIAMETER, 47" LONG, FLANGE AT BOTH ENDS. STAINLESS STEEL.
P8 ASSEMBLED W/P9	DW18TEASY			1			22.75		1	SINGLE WALL DUCT TEE, 18" DUCT, ASSEMBLY.
P9 ASSEMBLED W/P8 D=T	DW1819ADKIT						5.55		1	DUCT ACCESS DOOR WITH HANDLE & GREASE DAM, FOR 18" DUCT USE 19" DOOR. STAINLESS STEEL.
P10	DW1820ADPEC						13.20		1	SINGLE WALL DUCT ADAPTER, 18" DUCT DIA TO 20" DUCT DIA, ECCENTRIC ASSEMBLY.
P11	DW18SUBRAS						3.38		1	DUCT SUPPORT BRACKET KIT, 18" DUCT, USED FOR HANGING DUCT. 12 GA STEEL, CLEAR ZINC COATING. - 2 RINGS, 4 BRACKETS, & HARDWARE BAG 2.
P12	DW1807LT						4.66		1	SINGLE WALL DUCT 18" DIAMETER, 7" LONG, FLANGE AT BOTH ENDS. STAINLESS STEEL.
P13	DW1815AJDKIT						18.31		1	SINGLE WALL DUCT ADJUSTABLE, 18" DIAMETER, 14.50" LONG, FLANGE AT ONE END WITH A 18" ADJUSTABLE COLLAR - STAINLESS STEEL.
P14	DW1418ADPEC						7.50		1	SINGLE WALL DUCT ADAPTER, 14" DUCT DIA TO 18" DUCT DIA, ECCENTRIC ASSEMBLY.
P15	DW1490ASY						10.62		1	SINGLE WALL DUCT 90 DEGREE ELBOW, 14" DUCT, ASSEMBLY.
P16	DW18SUBRAS						3.38		1	DUCT SUPPORT BRACKET KIT, 18" DUCT, USED FOR HANGING DUCT. 12 GA STEEL, CLEAR ZINC COATING. - 2 RINGS, 4 BRACKETS, & HARDWARE BAG 2.
	3M-2000PLUS						0.80		6	DUCT - 3M FIRE BARRIER 2000 PLUS SILICONE - USED AS SEALANT TO SEAL DUCT JOINTS.
	DW14CLASY						1.06		7	DUCT "V" CLAMP WITH NEW DESIGN 14 GA BRACKETS, 14" DUCT, ASSEMBLY.
	DW18CLASY						1.30		8	DUCT "V" CLAMP WITH NEW DESIGN 14 GA BRACKETS, 18" DUCT, ASSEMBLY.
	DW20CLASY						1.41		1	DUCT "V" CLAMP WITH NEW DESIGN 14 GA BRACKETS, 20" DUCT, ASSEMBLY.
TOTAL WEIGHT							206.73			

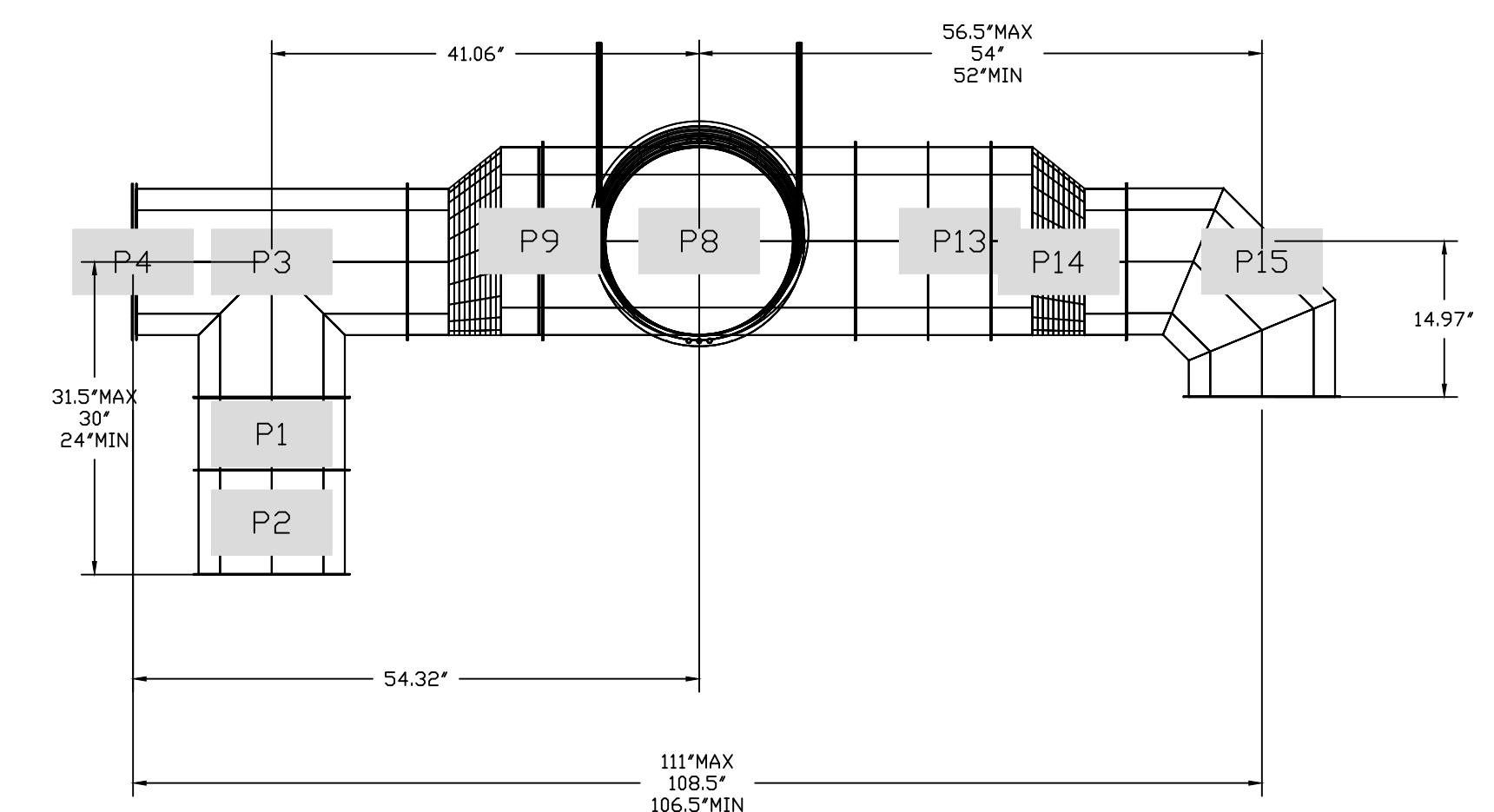
DUCTWORK #1 SE VIEW
DR-HOOD



DUCTWORK #1 TOP VIEW
DR-HOOD



DUCTWORK #1 FRONT VIEW
DR-HOOD



REVISIONS

DESCRIPTION	DATE

CAPTIVE
Air Solutions
www.captiveair.com
1329 East Kemper Rd., Ste. 4210, Cincinnati, OH, 45246 PHONE: (513) 860-5555 EMAIL: reg12@captiveair.com

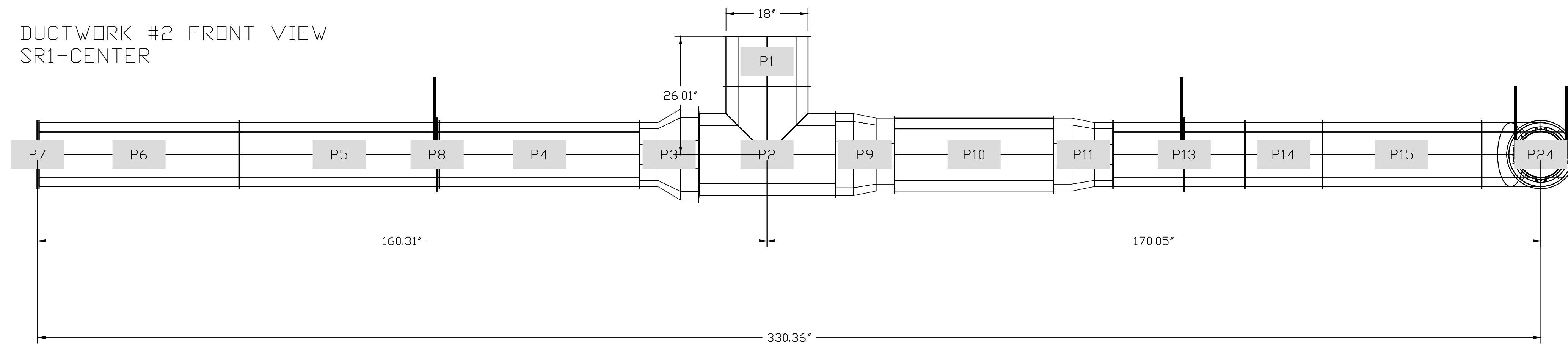
Mi Casa Ductwork - Duct Run
3100 Price Ave,
Cincinnati, OH, 45205

DATE: 3/15/2022
DWG.#: 5182610
DRAWN BY: jcirilli
SCALE: 3/4" = 1'-0"
MASTER DRAWING

DUCTWORK #2 PARTS - JOB#5182610 SR1-CENTER

TAG	PART #	CFM	GPM	ZONE	COVEREDBY	SP	THROW	WEIGHT	VELOCITY	QTY	DESCRIPTION
P1	DW1811LT-S	1950						4.66	1103.47	1	SINGLE WALL SUPPLY DUCT 18" DIAMETER, 11' LONG, FLANGE AT BOTH ENDS. STAINLESS STEEL.
P2	DW18TEASY-S	1950		1				15.17	1103.47	1	SINGLE WALL SUPPLY DUCT TEE, 18" DUCT, ASSEMBLY.
P3	DW1418ADP	886						7.50	829.14	1	SINGLE WALL DUCT ADAPTER, 14" DUCT DIA TO 18" DUCT DIA, ASSEMBLY.
P4	DW1444LT-S0-HC	886				0.2151	109.521	14.53	829.14	1	SINGLE WALL HIGH CAPACITY SUPPLY DUCT 14" DIAMETER, 44" LONG, FLANGE AT BOTH ENDS. STAINLESS STEEL.
P5	DW1444LT-S0-HC	591				0.2111	108.486	14.53	552.76	1	SINGLE WALL HIGH CAPACITY SUPPLY DUCT 14" DIAMETER, 44" LONG, FLANGE AT BOTH ENDS. STAINLESS STEEL.
P6 ASSEMBLED W/P7	DW1444LT-S0-HC	295				0.2091	107.9648	14.53	276.38	1	SINGLE WALL HIGH CAPACITY SUPPLY DUCT 14" DIAMETER, 44" LONG, FLANGE AT BOTH ENDS. STAINLESS STEEL.
P7 ASSEMBLED W/P6	DW1415AD							2.40		1	DUCT ACCESS DOOR WITH HANDLE, FOR 14" DUCT USE 15" DOOR. STAINLESS STEEL.
P8	HF3-LG-20FT-EACH							2.00		1	SUPPLY DUCT CABLE SUSPENSION SYSTEM - UL APPROVED - GRIPPLE NO.3 (200 LBS) SINGLE LOOP HANGER - GALVANIZED STEEL.
P9	DW1618ADP	1064						7.81	761.77	1	SINGLE WALL DUCT ADAPTER, 16" DUCT DIA TO 18" DUCT DIA, STANDARD PART.
P10	DW1635LT-S0-HC	1064				0.2531	118.9098	12.45	761.77	1	SINGLE WALL HIGH CAPACITY SUPPLY DUCT 16" DIAMETER, 35" LONG, FLANGE AT BOTH ENDS. STAINLESS STEEL.
P11	DW1416ADP	842						7.50	787.68	1	SINGLE WALL DUCT ADAPTER, 14" DUCT DIA TO 16" DUCT DIA, ASSEMBLY.
P12	DW1429LT-S0-HC	842				0.2481	117.7168	9.08	787.68	1	SINGLE WALL HIGH CAPACITY SUPPLY DUCT 14" DIAMETER, 29" LONG, FLANGE AT BOTH ENDS. STAINLESS STEEL.
P13	HF3-LG-20FT-EACH							2.00		1	SUPPLY DUCT CABLE SUSPENSION SYSTEM - UL APPROVED - GRIPPLE NO.3 (200 LBS) SINGLE LOOP HANGER - GALVANIZED STEEL.
P14	DW1417LT-S	665						5.48	621.86	1	SINGLE WALL SUPPLY DUCT 14" DIAMETER, 17" LONG, FLANGE AT BOTH ENDS. STAINLESS STEEL.
P15	DW1435LT-S0-HC	665				0.2441	116.7536	10.89	621.86	1	SINGLE WALL HIGH CAPACITY SUPPLY DUCT 14" DIAMETER, 35" LONG, FLANGE AT BOTH ENDS. STAINLESS STEEL.
P16	DW1490ASY-S	443						7.08	414.57	1	SINGLE WALL SUPPLY DUCT 90 DEGREE ELBOW, 14" DUCT, ASSEMBLY.
P17	DW1014ADP	443						6.17	812.56	1	SINGLE WALL DUCT ADAPTER, 10" DUCT DIA TO 14" DUCT DIA, ASSEMBLY.
P18	DW1017LT-S	443						3.85	812.56	1	SINGLE WALL SUPPLY DUCT 10" DIAMETER, 17" LONG, FLANGE AT BOTH ENDS. STAINLESS STEEL.
P19	HF3-LG-20FT-EACH							2.00		1	SUPPLY DUCT CABLE SUSPENSION SYSTEM - UL APPROVED - GRIPPLE NO.3 (200 LBS) SINGLE LOOP HANGER - GALVANIZED STEEL.
P20	DW1035LT-S0-HC	443				0.2161	109.7783	7.85	812.56	1	SINGLE WALL HIGH CAPACITY SUPPLY DUCT 10" DIAMETER, 35" LONG, FLANGE AT BOTH ENDS. STAINLESS STEEL.
P21	DW1035LT-S	222						7.85	406.28	1	SINGLE WALL SUPPLY DUCT 10" DIAMETER, 35" LONG, FLANGE AT BOTH ENDS. STAINLESS STEEL.
P22 ASSEMBLED W/P24	DW1035LT-S0-HC	222				0.2101	108.2257	7.85	406.28	1	SINGLE WALL HIGH CAPACITY SUPPLY DUCT 10" DIAMETER, 35" LONG, FLANGE AT BOTH ENDS. STAINLESS STEEL.
P23	HF3-LG-20FT-EACH							2.00		1	SUPPLY DUCT CABLE SUSPENSION SYSTEM - UL APPROVED - GRIPPLE NO.3 (200 LBS) SINGLE LOOP HANGER - GALVANIZED STEEL.
P24 ASSEMBLED W/P22	DW1011AD							1.29		1	DUCT ACCESS DOOR WITH HANDLE, FOR 10" DUCT USE 11" DOOR. STAINLESS STEEL.
	20100MNE+9485PC-BLACK							0.50		2	SUPPLY DUCT GASKET - LIGHT DUTY BLENDED EPDM FOAM GASKET - 20100MNE + 9485PC BLACK 1/8" X 1/2" X 50'.
	DW10CLASY							0.82		5	DUCT "V" CLAMP WITH NEW DESIGN 14 GA BRACKETS, 10" DUCT, ASSEMBLY.
	DW14CLASY							1.06		9	DUCT "V" CLAMP WITH NEW DESIGN 14 GA BRACKETS, 14" DUCT, ASSEMBLY.
	DW16CLASY							1.18		2	DUCT "V" CLAMP WITH NEW DESIGN 14 GA BRACKETS, 16" DUCT, ASSEMBLY.
	DW18CLASY							1.30		4	DUCT "V" CLAMP WITH NEW DESIGN 14 GA BRACKETS, 18" DUCT, ASSEMBLY.
TOTAL WEIGHT								198.67			

DUCTWORK #2 FRONT VIEW
SR1-CENTER



REVISIONS

DESCRIPTION	DATE

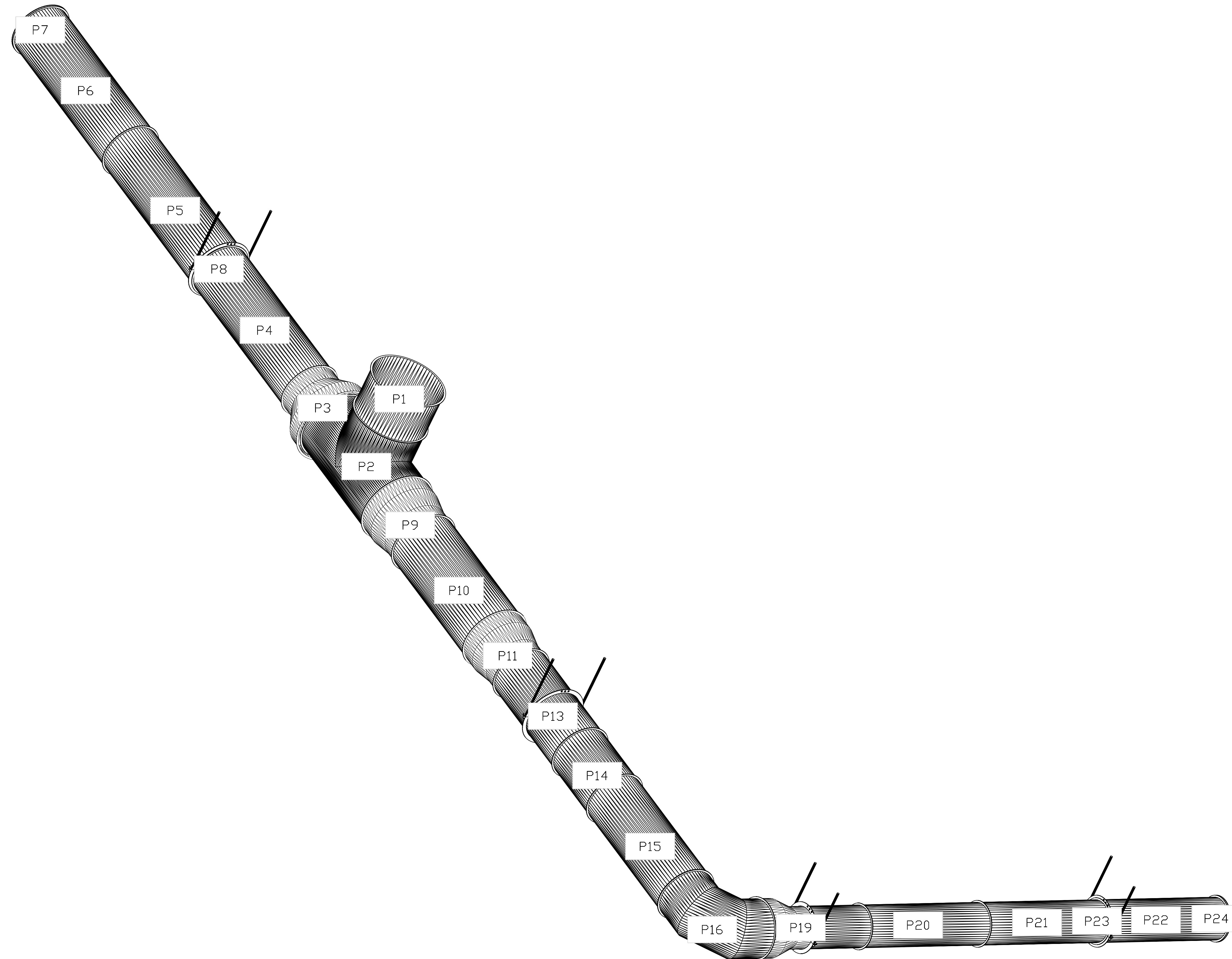
www.captiveair.com
1329 East Kemper Rd., Ste. 4210, Cincinnati, OH, 45246 PHONE: (513) 860-5555 EMAIL: reg12@captivair.com

Mi Casa Ductwork - Duct Run
3100 Price Ave,
Cincinnati, OH, 45205

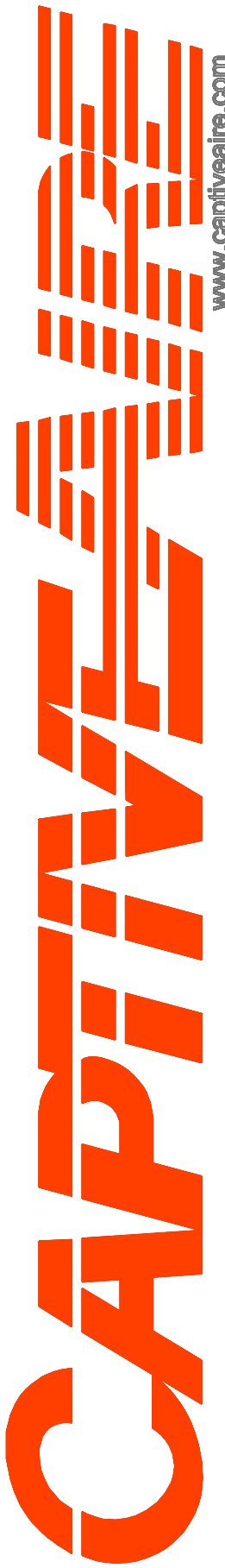
DATE: 3/15/2022
DWG.#: 5182610
DRAWN BY: jcirilli
SCALE: 3/4" = 1'-0"
MASTER DRAWING

SHEET NO.
2

DUCTWORK #2 SE VIEW
SR1-CENTER



REVISIONS	
DESCRIPTION	DATE



CAPTIVE AIR
Air Solutions
www.captiveair.com
1328 East Kemper Rd., Ste. 4210, Cincinnati, OH, 45246 PHONE: (513) 860-5555 EMAIL: reg120@captiveair.com

Mi Casa Ductwork - Duct Run
3100 Price Ave,
Cincinnati, OH, 45205

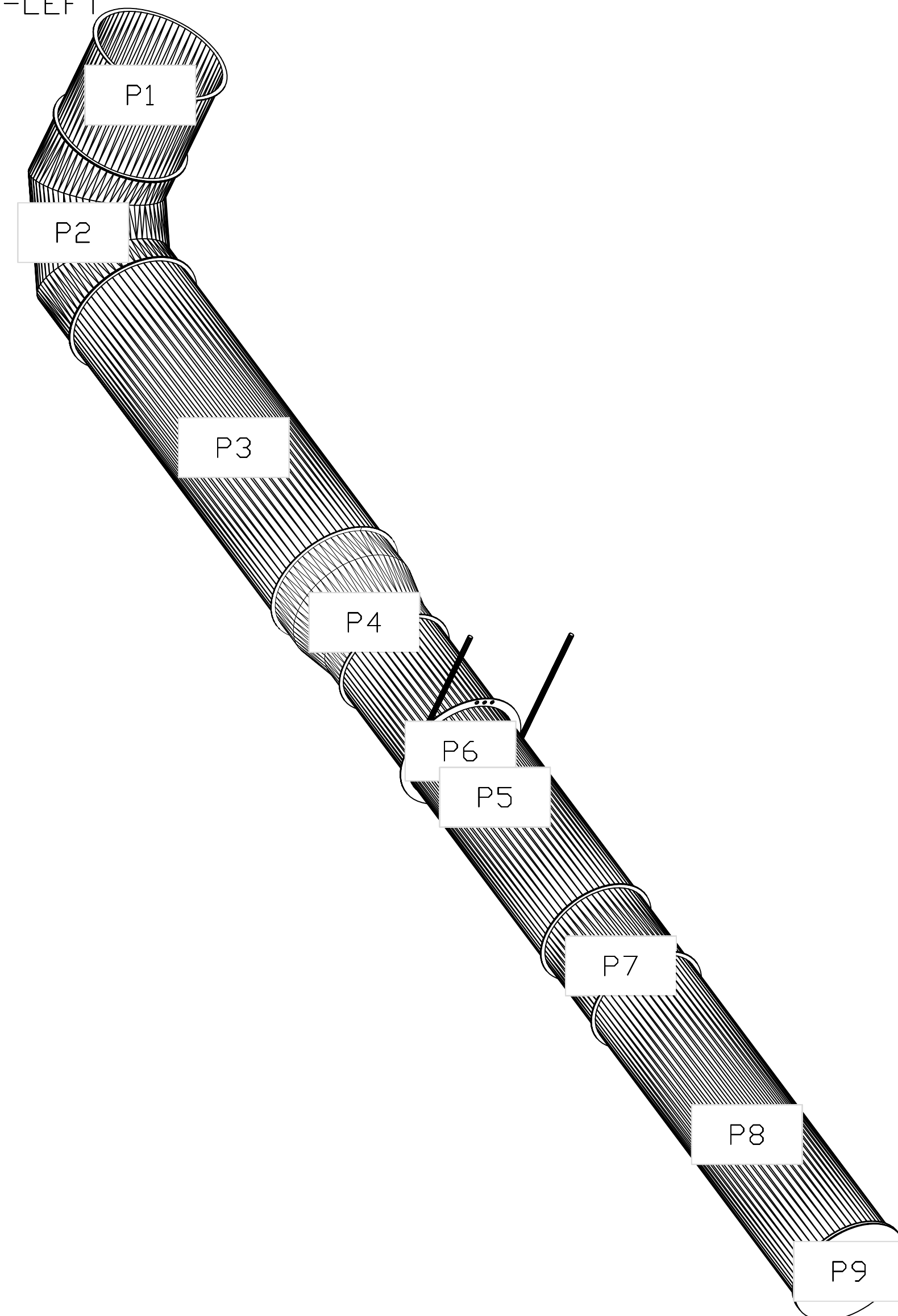
DATE: 3/15/2022
DWG. #: 5182610
DRAWN BY: jcirilli
SCALE: 3/4" = 1'-0"
MASTER DRAWING

SHEET NO.
3

DUCTWORK #3 PARTS - JOB#5182610 SR3-LEFT

TAG	PART #	CFM	GPM	ZONE	COVEREDBY	SP	THROW	WEIGHT	VELOCITY	QTY	DESCRIPTION
P1	DW1411LT-S	1300						3.64	1216.07	1	SINGLE WALL SUPPLY DUCT 14" DIAMETER, 11" LONG, FLANGE AT BOTH ENDS. STAINLESS STEEL.
P2	DW1490ASY-S	1300						7.08	1216.07	1	SINGLE WALL SUPPLY DUCT 90 DEGREE ELBOW, 14" DUCT, ASSEMBLY.
P3	DW1444LT-S0-HC	1300						14.53	1216.07	1	SINGLE WALL HIGH CAPACITY SUPPLY DUCT 14" DIAMETER, 44" LONG, FLANGE AT BOTH ENDS. STAINLESS STEEL.
P4	DW1214ADP	867						6.50	1103.47	1	SINGLE WALL DUCT ADAPTER, 12" DUCT DIA TO 14" DUCT DIA, ASSEMBLY.
P5	DW1244LT-S0-HC	867						12.47	1103.47	1	SINGLE WALL HIGH CAPACITY SUPPLY DUCT 12" DIAMETER, 44" LONG, FLANGE AT BOTH ENDS. STAINLESS STEEL.
P6	HF3-LG-20FT-EACH							2.00		1	SUPPLY DUCT CABLE SUSPENSION SYSTEM - UL APPROVED - GRIPPLE NO.3 (200 LBS) SINGLE LOOP HANGER - GALVANIZED STEEL.
P7	DW1211LT-S	433						3.08	551.74	1	SINGLE WALL SUPPLY DUCT 12" DIAMETER, 11" LONG, FLANGE AT BOTH ENDS. STAINLESS STEEL.
P8 ASSEMBLED W/P9	DW1244LT-S0-HC	433						12.47	551.74	1	SINGLE WALL HIGH CAPACITY SUPPLY DUCT 12" DIAMETER, 44" LONG, FLANGE AT BOTH ENDS. STAINLESS STEEL.
P9 ASSEMBLED W/P8	DW1213AD							1.80		1	DUCT ACCESS DOOR WITH HANDLE, FOR 12" DUCT USE 13" DOOR. STAINLESS STEEL.
	20100MNE+9485PC-BLACK							0.50		1	SUPPLY DUCT GASKET - LIGHT DUTY BLENDED EPDM FOAM GASKET - 20100MNE + 9485PC BLACK 1/8" X 1/2" X 50'.
	DW12CLASY							0.94		4	DUCT "V" CLAMP WITH NEW DESIGN 14 GA BRACKETS, 12" DUCT, ASSEMBLY.
	DW14CLASY							1.06		3	DUCT "V" CLAMP WITH NEW DESIGN 14 GA BRACKETS, 14" DUCT, ASSEMBLY.
	DW16CLASY							1.18		1	DUCT "V" CLAMP WITH NEW DESIGN 14 GA BRACKETS, 16" DUCT, ASSEMBLY.
TOTAL WEIGHT								72.19			

DUCTWORK #3 SE VIEW
SR3-LEFT



REVISIONS	
DESCRIPTION	DATE


 www.captiveair.com
 1328 East Kemper Rd., Ste. 4210, Cincinnati, OH, 45246 PHONE: (513) 860-5555 EMAIL: rep12@captiveair.com

Mi Casa Ductwork - Duct Run
 3100 Price Ave,
 Cincinnati, OH, 45205

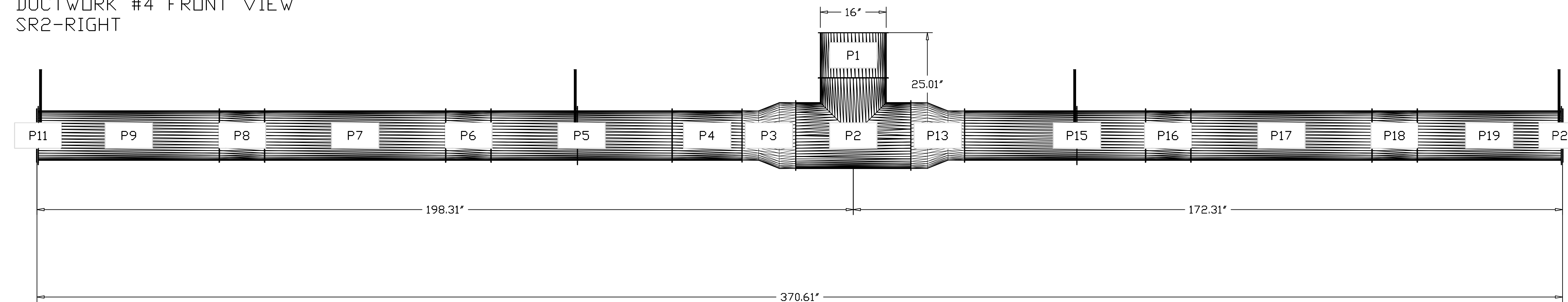
DATE: 3/15/2022
 DWG.#: 5182610
 DRAWN BY: jcirilli
 SCALE: 3/4" = 1'-0"
 MASTER DRAWING

SHEET NO.
 4

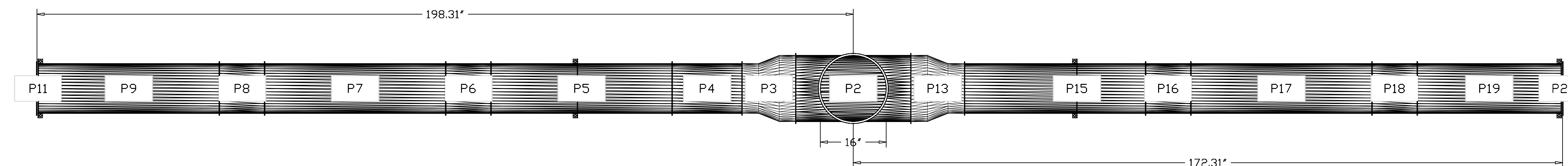
DUCTWORK #4 PARTS - JOB#5182610 SR2-RIGHT

TAG	PART #	CFM	GPM	ZONE	COVEREDBY	SP	THROW	WEIGHT	VELOCITY	QTY	DESCRIPTION
P1	DW1611LT-S	1500						4.11	1074.30	1	SINGLE WALL SUPPLY DUCT 16" DIAMETER, 11' LONG, FLANGE AT BOTH ENDS. STAINLESS STEEL.
P2	DW16TEASY-S	1500		1				12.82	1074.30	1	SINGLE WALL SUPPLY DUCT TEE, 16" DUCT, ASSEMBLY.
P3	DW1216ADP	783						6.40	996.45	1	SINGLE WALL DUCT ADAPTER, 12" DUCT DIA TO 16" DUCT DIA, ASSEMBLY.
P4	DW1217LT-S	783						4.70	996.45	1	SINGLE WALL SUPPLY DUCT 12" DIAMETER, 17' LONG, FLANGE AT BOTH ENDS. STAINLESS STEEL.
P5	DW1244LT-S0-HC	783						12.47	996.45	1	SINGLE WALL HIGH CAPACITY SUPPLY DUCT 12" DIAMETER, 44' LONG, FLANGE AT BOTH ENDS. STAINLESS STEEL.
P6	DW1211LT-S	522						3.08	664.30	1	SINGLE WALL SUPPLY DUCT 12" DIAMETER, 11' LONG, FLANGE AT BOTH ENDS. STAINLESS STEEL.
P7	DW1244LT-S0-HC	522						12.47	664.30	1	SINGLE WALL HIGH CAPACITY SUPPLY DUCT 12" DIAMETER, 44' LONG, FLANGE AT BOTH ENDS. STAINLESS STEEL.
P8	DW1211LT-S	261						3.08	332.15	1	SINGLE WALL SUPPLY DUCT 12" DIAMETER, 11' LONG, FLANGE AT BOTH ENDS. STAINLESS STEEL.
P9 ASSEMBLED W/P10	DW1244LT-S0-HC	261						12.47	332.15	1	SINGLE WALL HIGH CAPACITY SUPPLY DUCT 12" DIAMETER, 44' LONG, FLANGE AT BOTH ENDS. STAINLESS STEEL.
P10 ASSEMBLED W/P9	DW1213AD							1.80		1	DUCT ACCESS DOOR WITH HANDLE, FOR 12" DUCT USE 13" DOOR. STAINLESS STEEL.
P11	HF3-LG-20FT-EACH							2.00		1	SUPPLY DUCT CABLE SUSPENSION SYSTEM - UL APPROVED - GRIPPLE NO.3 (200 LBS) SINGLE LOOP HANGER - GALVANIZED STEEL.
P12	HF3-LG-20FT-EACH							2.00		1	SUPPLY DUCT CABLE SUSPENSION SYSTEM - UL APPROVED - GRIPPLE NO.3 (200 LBS) SINGLE LOOP HANGER - GALVANIZED STEEL.
P13	DW1216ADP	717						6.40	913.41	1	SINGLE WALL DUCT ADAPTER, 12" DUCT DIA TO 16" DUCT DIA, ASSEMBLY.
P14	DW1244LT-S0-HC	717						12.47	913.41	1	SINGLE WALL HIGH CAPACITY SUPPLY DUCT 12" DIAMETER, 44' LONG, FLANGE AT BOTH ENDS. STAINLESS STEEL.
P15	HF3-LG-20FT-EACH							2.00		1	SUPPLY DUCT CABLE SUSPENSION SYSTEM - UL APPROVED - GRIPPLE NO.3 (200 LBS) SINGLE LOOP HANGER - GALVANIZED STEEL.
P16	DW1211LT-S	457						3.08	581.26	1	SINGLE WALL SUPPLY DUCT 12" DIAMETER, 11' LONG, FLANGE AT BOTH ENDS. STAINLESS STEEL.
P17	DW1244LT-S0-HC	457						12.47	581.26	1	SINGLE WALL HIGH CAPACITY SUPPLY DUCT 12" DIAMETER, 44' LONG, FLANGE AT BOTH ENDS. STAINLESS STEEL.
P18	DW1211LT-S	196						3.08	249.11	1	SINGLE WALL SUPPLY DUCT 12" DIAMETER, 11' LONG, FLANGE AT BOTH ENDS. STAINLESS STEEL.
P19 ASSEMBLED W/P21	DW1235LT-S0-HC	196						9.35	249.11	1	SINGLE WALL HIGH CAPACITY SUPPLY DUCT 12" DIAMETER, 35' LONG, FLANGE AT BOTH ENDS. STAINLESS STEEL.
P20	HF3-LG-20FT-EACH							2.00		1	SUPPLY DUCT CABLE SUSPENSION SYSTEM - UL APPROVED - GRIPPLE NO.3 (200 LBS) SINGLE LOOP HANGER - GALVANIZED STEEL.
P21 ASSEMBLED W/P19	DW1213AD							1.80		1	DUCT ACCESS DOOR WITH HANDLE, FOR 12" DUCT USE 13" DOOR. STAINLESS STEEL.
	20100MNE+9485PC-BLACK							0.50		2	SUPPLY DUCT GASKET - LIGHT DUTY BLENDED EPDM FOAM GASKET - 20100MNE + 9485PC BLACK 1/8" X 1/2" X 50'.
	DW12CLASY							0.94		13	DUCT "V" CLAMP WITH NEW DESIGN 14 GA BRACKETS, 12" DUCT, ASSEMBLY.
	DW16CLASY							1.18		4	DUCT "V" CLAMP WITH NEW DESIGN 14 GA BRACKETS, 16" DUCT, ASSEMBLY.
TOTAL WEIGHT								147.99			

DUCTWORK #4 FRONT VIEW
SR2-RIGHT



DUCTWORK #4 TOP VIEW
SR2-RIGHT



REVISIONS

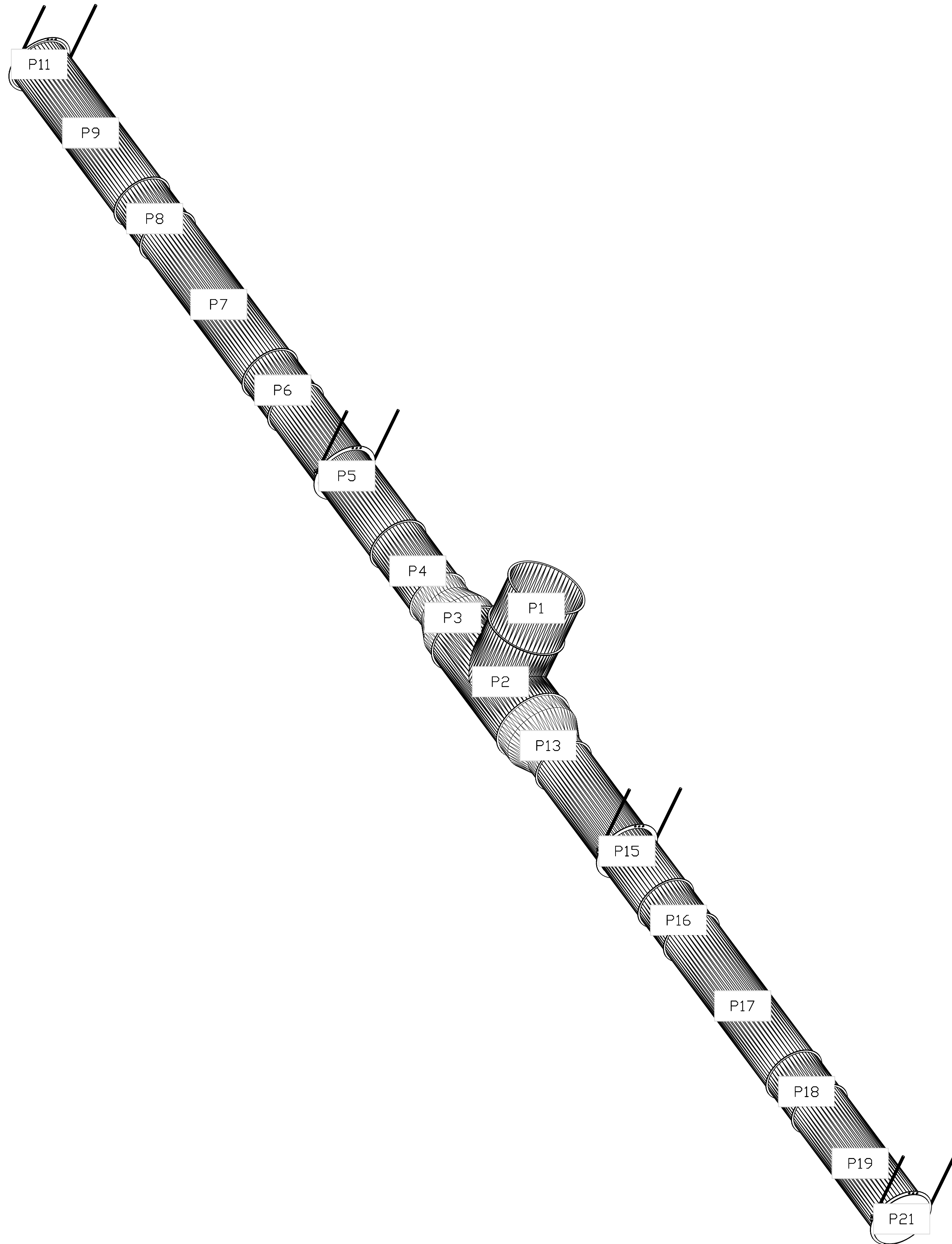
DESCRIPTION	DATE

CAPTIVE
Air Solutions
www.captiveair.com
1328 East Kemper Rd., Ste. 4210, Cincinnati, OH, 45246 PHONE: (513) 860-5555 EMAIL: rep120@captiveair.com

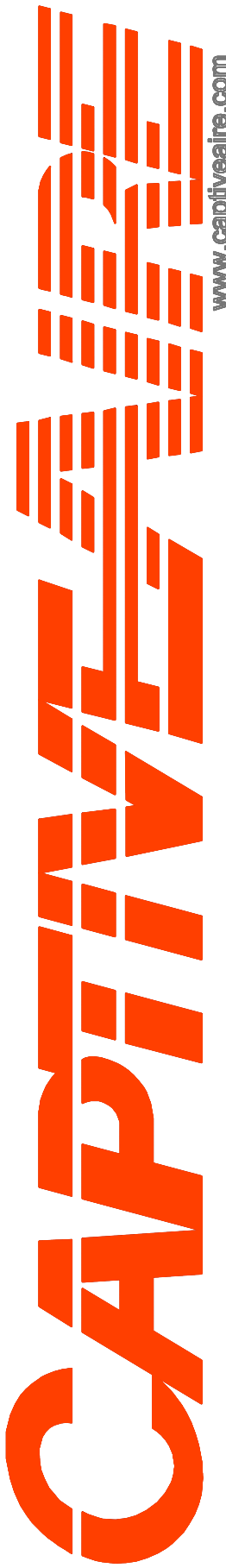
Mi Casa Ductwork - Duct Run
3100 Price Ave,
Cincinnati, OH, 45205

DATE: 3/15/2022
DWG.#: 5182610
DRAWN BY: jcirilli
SCALE: 3/4" = 1'-0"
MASTER DRAWING

DUCTWORK #4 SE VIEW
SR2-RIGHT



REVISIONS	
DESCRIPTION	DATE



CAPTIVE AIR

Air Solutions
www.captiveair.com
1328 East Kemper Rd., Ste. 4210, Cincinnati, OH, 45246 PHONE: (513) 860-5555 EMAIL: reg120@captiveair.com

Mi Casa Ductwork - Duct Run
3100 Price Ave,
Cincinnati, OH, 45205

DATE: 3/15/2022
DWG.#: 5182610
DRAWN BY: jcirilli
SCALE: 3/4" = 1'-0"
MASTER DRAWING

SHEET NO.
6