



4500 WINDFLOUGH CIRCLE
LAWRENCE, KANSAS 66044
PH: 785.842.1000
FAX: 785.842.1001
WWW.BLANCHARDAE.COM



THIS DRAWING IS AN INSTRUMENT OF SERVICE AND IS THE PROPERTY OF BLANCHARD AE GROUP. IT IS TO BE USED ONLY FOR THE PROJECT AND SITE SPECIFICALLY IDENTIFIED HEREON. ANY REUSE OR MODIFICATION OF THIS DRAWING WITHOUT THE WRITTEN CONSENT OF BLANCHARD AE GROUP IS STRICTLY PROHIBITED.



CHIPOTLE MEXICAN GRILL, INC.
10000 WINDFLOUGH CIRCLE
LAWRENCE, KANSAS 66044
PH: 785.842.1000
WWW.CHIPOTLE.COM

STORE NO.: 4989
South St. Pete
3901 34th St.
St. Petersburg, FL 33711

Revision table with columns for No., Date, and Description. The table is currently empty.

Drawn: [Blank]
Checked: [Blank]
UD: AAD
2/20/25

Customer: HVAC SCHEDULES

M600

CONTROL FUNCTIONS

- THE MAIN COILING FOR THE FAN AND MAKE-UP AIR LINE SHALL BE INTERLOCKED TO START TOGETHER. THIS CONTROL CIRCUIT SHALL BE BY A START/STOP OVERRIDE.
- THE HUMIDIFIER, BLANKET COIL, RECOIL, AND BY-PASS VALVES SHALL BE INTERLOCKED TO THE HUMIDIFIER. LOCATED IN THE OFFICE, ALL LINES SHALL OPERATE WITH CONTINUOUS FLOW THROUGHOUT OCCUPY HOURS AND INTERMITTENTLY AS NEEDED TO MAINTAIN SET POINTS THROUGHOUT THE DAY. OUTSIDE HUMIDIFIERS SHALL BE OPERATED CONTINUOUSLY WHEN IN USE IN OCCUPY MODE OR WHEN THE ROOM SYSTEM IS ON AND SHALL BE CLOSED TO MAINTAIN SET POINTS.
- THE HUMIDIFIERS SHALL OCCUPY MODE OCCUR/ACCIDENT STATUS INDICATED ON THE SCHEDULE IN THE ENERGY MANAGEMENT SYSTEM.

SANITIZING EQUIPMENT SCHEDULE

TAG	COUNT	DESCRIPTION	FURNISHED BY	INSTALLED BY	MANUFACTURER	MODEL	REMARKS
SH-1	2	BATHROOM AIR PURIFICATION UNIT	TUV	GC	RGE ENVIRONMENTAL GROUP	REVEAL-400	SEE ELECTRICAL SHEET FOR CONNECTION INFORMATION
SH-1	2	WALL AIR PURIFICATION UNIT	TUV	GC	RGE ENVIRONMENTAL GROUP	REVEAL-400	SEE ELECTRICAL SHEET FOR CONNECTION INFORMATION
SH-1	1	ICE MACHINE TREATMENT SYSTEM	TUV	GC	RGE ENVIRONMENTAL GROUP	MSB-GA	SEE PLUMBING DRAWINGS FOR INSTALLATION INFORMATION

AIR BALANCE SCHEDULE

TAG	SUPPLY FLOW	RETURN FLOW	EXHAUST FLOW	SUBTOTAL
RT-1	0 CFM	0 CFM	1,000 CFM	1,000 CFM
RT-2	0 CFM	0 CFM	1,000 CFM	1,000 CFM
RT-3	3,500 CFM	2,850 CFM	0 CFM	1,000 CFM
RT-3	4,400 CFM	3,350 CFM	0 CFM	1,000 CFM
NET PRESSURE LOSS:				0.25"

FAN SCHEDULE

TAG	DESCRIPTION	AIRFLOW	E.S.P.	WEIGHT	ELECTRICAL		FURNISHED BY	INSTALLED BY	BASIS FOR DESIGN	MODEL	REMARKS
					MOTOR POWER	V/PH					
FD-1	UPWARD EXHAUST FAN	1,000 CFM	1.20 in-Hg	300 lb	1.0 hp	120/1/0	HS	GC	CAPTURE-AIR	DR13HA	DIRECT DRIVE 120V 1/0 HP EXHAUST FAN FURNISHED WITH WASH-REPROOF DISCONNECT AND WASH-REPROOF
FD-2	DOWNWARD EXHAUST FAN	150 CFM	0.40 in-Hg	100 lb	0.25 hp	120/1/0	HS	GC	CAPTURE-AIR	DR13HA	DIRECT DRIVE DOWNWARD EXHAUST FAN FURNISHED WITH WASH-REPROOF DISCONNECT AND WASH-REPROOF

AIR TERMINAL SCHEDULE

TAG	DESCRIPTION	FACE SIZE	MATERIAL	FINISH	MOUNTING	FURNISHED BY	INSTALLED BY	BASIS FOR DESIGN		NOTES
								MANUFACTURER	MODEL	
CE-1	PERFORATED CEILING	24' x 24'	ALUMINUM	WHITE	LAY IN CEILING	GC	GC	MALDEN	4324 TYPE 1	PROVIDE WITH INTEGRAL OBD
CE-1	PERFORATED CEILING	12' x 12'	ALUMINUM	WHITE	SURFACE MOUNT	GC	GC	MALDEN	4324 TYPE 1	PROVIDE INTEGRAL OBD
CE-2	PERFORATED CEILING	12' x 12'	ALUMINUM	WHITE	LAY IN CEILING	GC	GC	MALDEN	4324 TYPE 1	
CE-3	PERFORATED CEILING	12' x 12'	ALUMINUM	WHITE	SURFACE MOUNT	GC	GC	MALDEN	4324 TYPE 1	
SA-1	ADJUSTABLE TUBO NOZZLE	12"	ALUMINUM	WHITE	WALL	GC	GC	AIR CONCEPTS	AMB 34	PROVIDE WITH CONCEALED MOUNTING AND AIR ACCESSIBLE OBD
SA-2	ADJUSTABLE TUBO NOZZLE	12"	ALUMINUM	WHITE	WALL	GC	GC	MALDEN	511B	PROVIDE WITH INTEGRAL OBD

VIROGUARD SCHEDULE

TAG	COUNT	DESCRIPTION	DUCT CONNECTION SIZE	FAN	FURNISHED BY	INSTALLED BY	BASIS FOR DESIGN
VGS-1	4	VIROGUARD AIR TO VIROGUARD FOOD EXHAUST FAN ROOFTOP CONTAMINANT SYSTEM	10" x 10"	CAPTURE-AIR DUBS-HA	TUV	GC	ENVIRONMENTAL

CONDENSING UNIT SCHEDULE

TAG	DESCRIPTION	NOMINAL CAPACITY	NUMBER OF		REFRIGERANT		ELECTRICAL				FURNISHED BY	INSTALLED BY	BASIS FOR DESIGN	MODEL	REMARKS
			COMPRESSORS	CIRCUITS	TYPE	CHARGE	WEIGHT	MOOP	FLA	V/PH					
CU-1	CONDENSING UNIT WALL-RE COOLING	1.5	1	1	R-454B	13.43 lb	250 lb	19.4	3.4	270/1/0	WCS	GC	HO-SH-240	HYPERDRI-240	FURNISHED WITH WALL COIL
CU-2	REARICE CONDENSER LOW CAPACITY ICE MAKER	0	1	1	R-454B	13.43 lb	300 lb	120/1/0	NIS	GC	HO-SH-240	GC	HO-SH-240	URC 07	FURNISHED WITH ICE MAKER
CU-3	REARICE CONDENSER 300A MACHINE ICE MAKER	0	1	1	R-454B	3.66 lb	300 lb	120/1/0	NIS	GC	HO-SH-240	GC	HO-SH-240	URC 07	FURNISHED WITH ICE MAKER

KITCHEN HOOD SCHEDULE

TAG	DESCRIPTION	MAX COOKING TEMP.	AIRFLOW	E.S.P.	EXHAUST FLOW			NO. OF LIGHT FIXTURES	WEIGHT	FURNISHED BY	INSTALLED BY	BASIS FOR DESIGN	MODEL	REMARKS	
					NO.	WIDTH	LENGTH								
HD-1	TYPY LEANROOF HOOD	600 °F	1,000 CFM	0.80 in-Hg	1	10"	1'-10"	9'-4"	9'-1"	6	1,200 lb	HS	GC	CAPTURE-AIR	5424 NO-2 MATERIAL: 1/2" GAL. TYPY COIL ST. FURNISHED WITH WASH-REPROOF DISCONNECT AND WASH-REPROOF. INTERLOCKED LIGHT FIXTURES. 12" TALL RE-CEILING. VIROGUARD AIR TO VIROGUARD FOOD EXHAUST SUPPRESSION SYSTEM. DUCT CLEAN TREATMENT SYSTEM. PERFORM PACKAGE. SQUARE USE SYSTEM FOR CONTACT. AND APOE 300 CONNECTION.

ROOFTOP UNIT SCHEDULE

TAG	DESCRIPTION	NOMINAL CAPACITY	AIRFLOW			NET COOLING CAPACITY				ELEC. HEAT		ELECTRICAL			BASIS FOR DESIGN	MODEL	REMARKS	
			TOTAL	OA	EA	S.E.P. (BTU W/C)	TOTAL (MMH)	SENSIBLE (MMH)	DE	WB	COND. CAP	WAT	EAT	MOOP				MCA
RTU-1	KITCHEN ROOFTOP UNIT	30 TONS	3,000 CFM	1,000 CFM	5.4	25.1	95.2	80 °F	67 °F	95 °F	32	51 °F	1,200 lb	320 A	115 A	220/1/0	CARRIER	50FC-014 FURNISHED WITH COMP. EXHAUST FLOW. REARICE REARICE. BILT. SMOKE DETECTOR BY REMOTE AFTER ANALYZATION (REARICE). M.C.O. WITH A FILTER. CUR. (H). GUARD. TOLL-FREE (H) ACCESS PANELS. FACTORY MOUNTED DISCONNECT. & UNIT MOUNTED FIELD WIRING CONVENIENCE RECPACKAGE. PROVIDED WITH CHIBATRE (H) ELECTRIC HEATER.
RTU-2	DRINK ROOM ROOFTOP UNIT	12.5 TONS	1,000 CFM	1,000 CFM	0.8	14.1	101.0	80 °F	67 °F	95 °F	38	55 °F	1,200 lb	320 A	115 A	220/1/0	CARRIER	50FC-014 FURNISHED WITH COMP. EXHAUST FLOW. REARICE REARICE. BILT. SMOKE DETECTOR BY REMOTE AFTER ANALYZATION (REARICE). M.C.O. WITH A FILTER. CUR. (H). GUARD. TOLL-FREE (H) ACCESS PANELS. FACTORY MOUNTED DISCONNECT. & UNIT MOUNTED FIELD WIRING CONVENIENCE RECPACKAGE. PROVIDED WITH CHIBATRE (H) ELECTRIC HEATER.



Digitally signed by Laura Blanchard
DN: CN=Laura Blanchard, E=lblanchard@bae.group, G=Laura, SN=Blanchard, C=US
Location: Lawrence, KS
Reason: I am the author of this document
Contact Info:
lblanchard@bae.group
Date: 2023.12.06 13:36:01-06'00'

WATER PLAN NOTES

- SEE CIVILITY PLAN FOR CONTINUATION OF 1/2" DOWN LINE TO BAG. SFPARTER.
- PROVIDE 1/2" FILTERED WATER TO THE BASIN IN EACH ROOM CARBONATOR AT 30" AFF. ROOM CARBONATOR SHALL HAVE AN INTEGRAL ASSE. 100-Z-WATER CARBONATOR WITH BAG. BACKFLOW PREVENTION DEVICE.
- PROVIDE WATER HOTTER DOWN TO PERIODICAL LIFT/PO.
- PROVIDE WATER FILTERS INSTALLED TO EACH PER. DETAIL. LIFT/PO. PROVIDE 1/2" SUPPLY PIPES FROM FILTERS TO EACH MARKET AND SODA CARBONATOR AS SHOWN.
- PROVIDE 1/2" FILTERED WATER ROUGH-IN TO THE ICE MAKER AT 50" AFF. PROVIDE 1/2" LONG STAINLESS STEEL (1/4" I.D.) BRASS/1/2" NPT CONNECTION WITH MINIMUM 0.4" O.D. (BRASS/1/2" NPT-27/28) F.I. OR EQUAL FOR FINAL CONNECTION TO THE MAKER.
- PROVIDE DOMESTIC WATER ROUGH-IN FOR THE MOP BASIN FAUCET AT 30" AFF. PROVIDE DOMESTIC WATER ROUGH-IN FOR THE PHYSICAL THERMOSTAT FAUCET (1/4" I.D.) 1/2" NPT DIRECTLY ABOVE THE MOP BASIN FAUCET. SEE ARCHITECTURAL ELEVATION FOR ADDITIONAL INFORMATION.
- PROVIDE DOMESTIC WATER ROUGH-IN FOR THE CHEMICAL DISPENSER FAUCET (1/4" I.D.) AT 52" AFF. SEE ARCHITECTURAL ELEVATION FOR ADDITIONAL INFORMATION.
- PROVIDE DOMESTIC WATER ROUGH-IN FOR THE VICTORY WASH DISPENSER FAUCET (1/4" I.D.) AT 52" AFF. SEE ARCHITECT. FOR ELEVATION FOR ADDITIONAL INFORMATION.
- PROVIDE ROUGH-IN TO RESTROOM HAND SINKS AS SHOWN. DETAIL 14-PT/20.
- CONNECT CHEMICAL DISPENSER TO THE CHEMICAL DISPENSER HAS AN INTEGRAL AIR GAP AS IS SHOWN IN DETAIL 10-PT/20.
- PROVIDE ASSE. SODAS/STROPPERS OR USE "THERMOSTATIC" WARMING VALVE. WATER FLUSH ON WATER SUPPLY TO KITCHEN HANDB SINKS. PROVIDE ANGLE STOP BELOW SINK. WATER WARMING VALVE TO WALL AND MAKE FINAL CONNECTION FROM ANGLE STOP TO WARMING VALVE AND FROM WARMING VALVE TO FAUCET USING BRASS/1/2" STAINLESS STEEL HOSE. ADJUST WARMING VALVE FOR A DISCHARGE TEMPERATURE OF APPROXIMATELY 110°F.
- PROVIDE ACCESSIBLE VALVE IN WATER SUPPLY LINE AS IS SHOWN.
- PROVIDE 1/2" FILTERED WATER ROUGH-IN TO THE ICE MAKER AT 50" AFF. PROVIDE 1/2" LONG STAINLESS STEEL (1/4" I.D.) BRASS/1/2" NPT CONNECTION WITH MINIMUM 0.4" O.D. (BRASS/1/2" NPT-27/28) F.I. OR EQUAL FOR FINAL CONNECTION TO THE ICE MAKER.
- INSTALL RGT. INER ICE MAKER SANITIZER FLUSHED BY TWP PER CHIPOTLES INSTALLATION INSTRUCTIONS. LOCATE BASE ON OR ULTIMA COUNTER IN LOCATION THAT DOES NOT INTERFERE WITH THE ROLLING RACK BELOW THE UTILITY COUNTER.

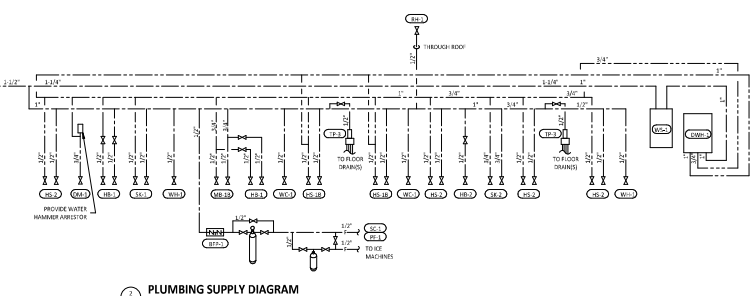
WATER PLAN NOTES

- PROVIDE 3/4" DOMESTIC HOT AND COLD WATER ROUGH-INS FOR THE PREP SINK ON 21" FAUCET AT 24" AFF. TO ALLOW FOR THE VICTORY WASH CHROME. SINKS TO BE INSTALLED DIRECTLY BELOW THE PREP SINK BASIN MAKE FINAL CONNECTION TO PREP SINK FAUCET USING 3/4" BRASS/1/2" STAINLESS STEEL WATER HAMMER CONNECTOR HOSE. FURNISHED WITH OSH MACHINE. PROVIDE WATER HAMMER ARRESTOR ON HOT WATER LINE. PROVIDE AN ACCESSIBLE SHUT-OFF VALVE BELOW THE OSH MACHINE AND INST. THE STRAINER FURNISHED WITH THE OSH MACHINE IN AN ACCESSIBLE LOCATION AT THE CONNECTION TO THE LINE.
- PROVIDE ROUGH-IN FOR THE MOP BASIN FAUCET AT 30" AFF. PROVIDE DOMESTIC WATER ROUGH-IN FOR THE PHYSICAL THERMOSTAT FAUCET (1/4" I.D.) 1/2" NPT DIRECTLY ABOVE THE MOP BASIN FAUCET. SEE ARCHITECTURAL ELEVATION FOR DETAIL.
- NOT SHOWN.
- INSTALL RGT. INER ICE MAKER SANITIZER FLUSHED BY TWP PER CHIPOTLES INSTALLATION INSTRUCTIONS. LOCATE BASE ON OR ULTIMA COUNTER IN LOCATION THAT DOES NOT INTERFERE WITH THE ROLLING RACK BELOW THE UTILITY COUNTER.
- PERMITS/ENGINEERING/DESIGN SHALL BE LIMITED TO 3/4" DIAMETER FOR A GROUP OF PENETRATIONS ALL CONTAINED WITHIN 10" DIAMETER. IF LARGER PENETRATIONS OR GROUPS OF PENETRATIONS ARE REQUIRED COORDINATE WITH STRUCTURAL ENGINEER FOR APPROPRIATE BRACING. SEE STRUCTURAL DRAWINGS FOR SHEAR WALL LOCATION.
- PROVIDE ACCESSIBLE TRAP PRIMER ABOVE JAPANESE TOILET AS SHOWN. INSTALL PER MANUFACTURER'S INSTALLATION INSTRUCTIONS WITH A SERVICE VALVE AT THE TRAP PRIMER FAUCET. PROVIDE 3/4" DISTRIBUTION PIPING TO FLOOR DRAIN TRAP PRIMER CONNECTIONS AS SHOWN. HORIZONTAL DISTRIBUTION PIPING SHALL HAVE CONTINUOUS SLOPE TO THE FLOOR DRAINING.
- PROVIDE WATER SOFTENER WS-3 PER DETAIL 10-PT/20.

PLUMBING FIXTURE SUPPLY CONNECTIONS

ROUGH-IN TYPE KEY	
ANGLE 3/4"	BRASS CRAFT KIT'S OR EQUAL (BRASS/CHROME 1/4" TURN ANGLE BALL STOP WITH 3/8" COMPRESSION CONNECTION)
ANGLE 1/2"	BRASS CRAFT KIT'S OR EQUAL (BRASS/CHROME 1/4" TURN ANGLE BALL STOP WITH 1/2" COMPRESSION CONNECTION)
ANGLE 3/8"	PERFORATED 1/2" X 1/2" X 1/2" BRASS/CHROME MILD TURN ANGLE STOP WITH 1/2" COMPRESSION CONNECTION
ANGLE 3/4"	PERFORATED 1/2" X 1/2" X 1/2" BRASS/CHROME MILD TURN ANGLE STOP WITH 3/4" TRIP NUT AND DUST CAP
ANGLE	PROVIDE CORNER NUT IN CONNECTIONS AS SHOWN. DETAIL 14-PT/20.
HOSE 1/2"	BRASS/1/2" STAINLESS STEEL HOSE WITH 1/2" NPT END
MP	PROVIDE PIPE WITH MIP THREAD STUBBED OUT OF WALL IN CONNECTION SIZE SHOWN AND LENGTH COMPATIBLE WITH FITTING AND BALL MATERIAL/FINISHES.

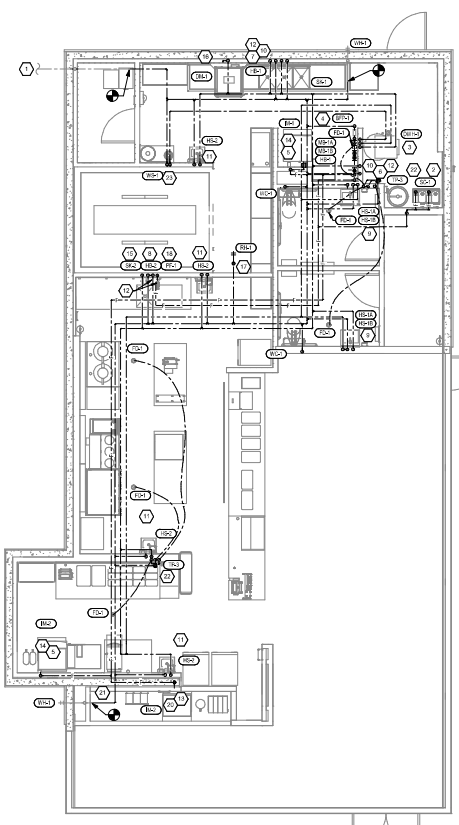
TAG	DESCRIPTION	CONNECTION SIZE	HOUGH-IN TYPE	WATER	TOTAL	TOTAL	
		CW	HW	CW	HW	W/D	
BFB-1	BFB BACKFLOW PREVENTER	1/2"	ORBIT	0	0	1	0
DM-2	DISP. SINK (TOILET MACHINE) PUMPED OUTLET	1/2"	ANGLE 1/4"	0	0	1	0
ET-1	EXPANSION TANK	3/4"	ORBIT	0	0	1	0
FC-1	FOOD CONTACT SURFACE HOSE	1/2"	MP	2,25	2,25	2	4
FB-2	VEGETABLE WASH HOSE	1/2"	MP	1,5	1,5	1	3
FB-3	BEST FLOOR HANDB SINK FAUCET	1/2"	ANGLE 3/8"	1,5	1,5	2	4
FB-2	BEST FLOOR HANDB SINK	1/2"	ANGLE 3/8"	1,5	1,5	2	4
FA-1	ICE MAKER FAUCET	1/2"	HOSE 1/2"	1	1	1	1
FB-1	BEST FLOOR HANDB SINK	1/2"	HOSE 1/2"	1	1	1	1
MB-3B	MOP SINK FAUCET	1/2"	MP	2,25	2,25	2	4
MP-1	PREP SINK FAUCET	3/4"	MP	1,5	1,5	1	3
MP-1	PREP SINK ROOF WIPER	3/4"	ORBIT	1	1	1	1
MP-1	BASE IN RED SINK RATE WITH CARBONATOR	1/2"	ANGLE 3/8"	1	1	1	1
MP-1	PREP SINK ROOF WIPER	1/2"	ANGLE 1/2"	1	1	1	1
MP-2	PREP SINK	3/4"	ANGLE 3/4"	3	3	4	4
MP-3	PREP SINK (HARD) (FLOOR DRAINING)	1/2"	ORBIT	0	0	2	0
MP-1	WATER SOFTENER	1/2"	ANGLE 3/8"	2	2	2	2
MP-1	PREP SINK WALL WIPER	3/4"	ORBIT	1	1	2	2
MP-1	WATER HOT PIPER	1"	ORBIT	0	0	1	0
GRAND TOTAL							48



PLUMBING SUPPLY DIAGRAM
NOT TO SCALE



Digitally signed by Laura Blanchard
DN: CN=Laura Blanchard,
E=blanchard@baa.group, G=Laura,
S=Laura Blanchard, C=US
Location: Lawrence, KS
Reason: I am the author of this document.
Contact Info: blanchard@baa.group
Date: 2023.12.05 13:35:04-0500



PLUMBING SUPPLY PLAN
1/8" = 1'-0"

Blanchard AE Group
4500 W. UNIVERSITY BLVD.
LAWRENCE, KS 66044
PH: 785.843.1234
WWW.BLANCHARDAE.COM

CHIPOTLE MEXICAN GRILL
1000 W. UNIVERSITY BLVD.
LAWRENCE, KS 66044
PH: 785.843.1234
WWW.CHIPOTLE.COM

STORE NO.: 4989
South St. Peter
3901 34th St.
St. Petersburg, FL 33711

PLUMBING WATER PLAN
P100

