

Report By:

National TAB
1329 E. KEMPER ROAD
SUITE 4210
CINCINNATI, OH 45246



Report: PRELIMINARY TAB REPORT

Function: Test, Adjust, & Balance

Date: 10/17/2024

Completed By: National TAB

PROJECT

10-14-24 ULTA 1697 SELMA, NC

Eastfield Crossing

Selma , NC 27576

Client

Rectenwald Brothers Construction

National TAB

Project: 10-14-24 ULTA 1697 SELMA, NC

Table Of Contents

| Section | Page # |
|----------------|---------------|
| Issue Data | 3 |
| AHU/RTU | 13 |
| FAN - Exhaust | 22 |
| GRD Layout | 25 |

Issue List

- EF-1 not installed
- EF-2 Dampers not installed
- EF-2 Restroom fan unable to access
- RTU -4 airflow is 149% of design
- RTU 2 airflow is 72% of design
- RTU-1 airflow is 84% of design
- RTU-2 diffuser 24 damper is closed
- RTU-3 missing damper on supply diffuser SGRD2 & 7
- RTU-4 outside filters not properly installed



10-14-24 ULTA 1697 SELMA, NC

Project Issue Information

Issue Name : EF-1 not installed
Description : EF-1 is not installed. Unable to balance the fan. It should be installed on 10/18.
Created By : National TAB **Assigned To :** National TAB - Dan Hertenstein
Status : Open
Priority : Urgent **Asset Tag :** EF1
Originated Date : 10/14/2024 - Jearod Ferrette - National TAB



10-14-24 ULTA 1697 SELMA, NC

Project Issue Information

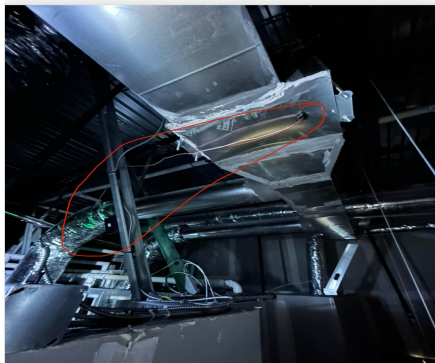
Issue Name : EF-2 Dampers not installed
Description : EF-2 dampers are not installed. However the airflows are proportional so they likely will not be required.
Created By : National TAB **Assigned To :** National TAB - Dan Hertenstein
Status : Open
Priority : Low **Asset Tag :** EF2
Originated Date : 10/17/2024 - Will Turnbough - National TAB

10-14-24 ULTA 1697 SELMA, NC

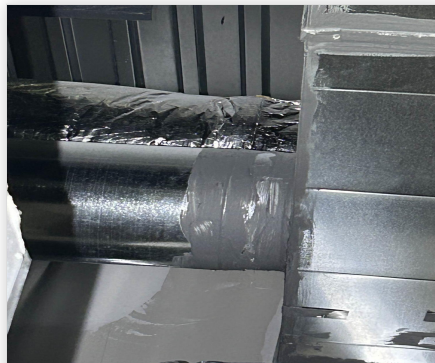
Project Issue Information

Issue Name : EF-2 Restroom fan unable to access
Description : EF-2 speed controller is located above hard ceiling and is inaccessible. Unable to reach from other side with ladder due to piping obstructing access. The unit is running at 117% of design.
Created By : National TAB **Assigned To :** National TAB - Dan Hertenstein
Status : Open
Priority : High **Asset Tag :**
Originated Date : 10/14/2024 - Jearod Ferrette - National TAB

Project Issue File Details



10/14/2024



10/14/2024

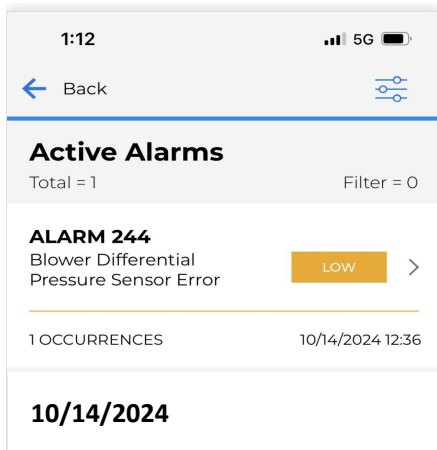


10-14-24 ULTA 1697 SELMA, NC

Project Issue Information

Issue Name : RTU -4 airflow is 149% of design
Description : RTU-4 airflow is 149% of design. Unable to slow unit down with the CORE controller. There is an alarm code 244 (Blower differential pressure sensor error) that appears to be preventing speed adjustment.
Created By : National TAB **Assigned To :** National TAB - Dan Hertenstein
Status : Open
Priority : High **Asset Tag :** RTU4
Originated Date : 10/14/2024 - Jearod Ferrette - National TAB

Project Issue File Details



10-14-24 ULTA 1697 SELMA, NC

Project Issue Information

Issue Name : RTU 2 airflow is 72% of design
Description : RTU-2 airflow is 72% of design (3435 CFM at diffusers) with motor at FLA. The duct is installed as 24"x18" inner dimensions but plans show 30"x20". Duct traversed as 3819 CFM. Velocity is 1273 FPM which is high. There is also an additional 90 degree transition installed. A larger motor would be required to achieve design.

Created By : National TAB **Assigned To :** National TAB - Dan Hertenstein

Status : Open

Priority : Urgent **Asset Tag :** RTU2

Originated Date : 10/15/2024 - Jearod Ferrette - National TAB

Project Issue File Details



10/15/2024

10-14-24 ULTA 1697 SELMA, NC

Project Issue Information

Issue Name : RTU-1 airflow is 84% of design
Description : RTU-1 airflow is 84% of design. The pulley cannot be increased further without the belt sitting too high up on the pulley. A pulley change is recommended.
Created By : National TAB **Assigned To :** National TAB - Dan Hertenstein
Status : Open
Priority : High **Asset Tag :** RTU1
Originated Date : 10/15/2024 - Jearod Ferrette - National TAB

Project Issue File Details



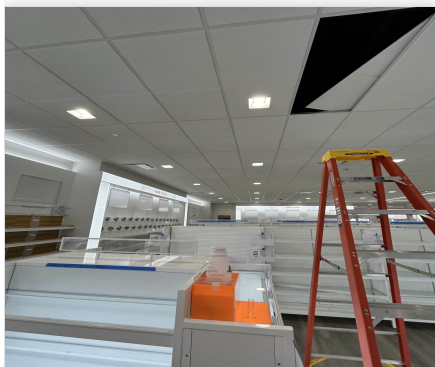
10/15/2024

10-14-24 ULTA 1697 SELMA, NC

Project Issue Information

Issue Name : RTU-2 diffuser 24 damper is closed
Description : Damper for diffuser 24 is closed and not accessible. There is a shelf that is directly underneath the damper. Damper is also installed on the top of the duct. It needs to be opened and a face accessible opposed blade damper is recommended in case further balancing is required.
Created By : National TAB **Assigned To :** National TAB - Dan Hertenstein
Status : Open
Priority : Low **Asset Tag :** RTU2
Originated Date : 10/15/2024 - Jearod Ferrette - National TAB

Project Issue File Details

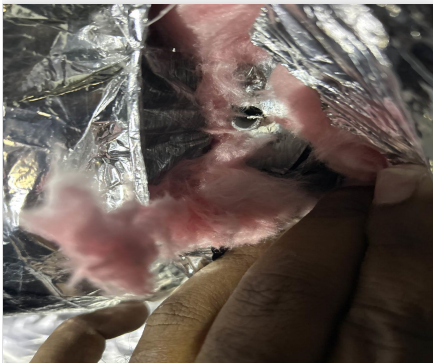


10/15/2024

**10-14-24 ULTA 1697 SELMA, NC****Project Issue Information**

Issue Name : RTU-3 missing damper on supply diffuser SGRD2 & 7
Description : Missing supply damper on RTU-3 SGRD 2 & SGRD 7. Needs to be installed to complete balancing.
Created By : National TAB **Assigned To :** National TAB - Dan Hertenstein
Status : Open
Priority : High **Asset Tag :** RTU3
Originated Date : 10/15/2024 - Jearod Ferrette - National TAB

Project Issue File Details



10/15/2024

10-14-24 ULTA 1697 SELMA, NC

Project Issue Information

Issue Name : RTU-4 outside filters not properly installed
Description : RTU 4 outside filters are not properly installed. Being held by tape.
Created By : National TAB **Assigned To :** National TAB - Dan Hertenstein
Status : Open
Priority : Medium **Asset Tag :** RTU4
Originated Date : 10/14/2024 - Jearod Ferrette - National TAB

Project Issue File Details



10/14/2024



National TAB

Project: 10-14-24 ULTA 1697 SELMA, NC

System/Unit: AHU/RTU



Comfort. Under Control.
www.nationaltab.com

Asset: RTU1

AREA:

| Unit Data | | |
|---------------------|-----------|------------|
| | Design | Actual |
| MFG | LENNOX | LENNOX |
| Serial Num | - | 5622J03502 |
| Model Num | LGM156U4E | LGM156U4E |
| Type | RTU | RTU |
| Configuration | VERTICAL | VERTICAL |
| Num OA Filters 1 | - | 3 |
| OA Filter Size 1 | - | 14X23 |
| Num Final Filter 1 | - | 6 |
| Final Filter Size 1 | - | 24X24X2 |

| Motor Data | | |
|----------------|--------|-----------|
| | Design | Actual |
| Motor MFG | - | INTERLINK |
| Frame | - | 56HZ |
| Horsepower | 3HP | 3HP |
| Motor Rpm | 1750 | 1750 |
| Phase | 3 | 3 |
| Rated Voltage | 460V | 460V |
| Rated Amperage | 4A | 4A |

| Drive Data | |
|--------------------|-------------|
| | Actual |
| Motor Sheave Size | 3-5/8 |
| Motor Bore Size | 7/8 |
| Motor Sheave SetPt | 2 TURNS OUT |
| Fan Sheave Size | BK95 |
| Fan Sheave Bore | 1-1/8 |
| Belt CL Distance | 21-1/4 |
| Num of Belts | 1 |
| Belt Size | BX59 |
| Belt Alignment | YES |

| Test Data | | |
|------------------------|--------|-------------|
| | Design | Actual |
| SF CFM | 4500 | 3843 |
| SF RPM | - | 664 |
| RA CFM | 3600 | 2970 |
| OA CFM | 900 | 873 |
| RL Voltage | - | 474/475/477 |
| RL Amperage | - | 3.41 @ VFD |
| SF Rotation | - | CCW |
| RA Damper Position | - | 62% |
| Min OA Damper Position | - | 38% |
| Min OA Damper Type | - | ECON |
| OA Enthalpy Setpt | - | 5 |

| Performance Data | | |
|------------------|--------|--------|
| | Design | Actual |
| MA Plenum SP | - | -0.42" |
| Fan Suction SP | - | -0.66" |
| Fan Discharge SP | - | 0.30" |
| Total ESP | 1.00 | 0.72" |
| Fan Total SP | - | 0.96" |

| General | |
|----------------------------|--------|
| | Actual |
| Fan Rotation Correct | YES |
| Unit Filters Clean | YES |
| Condensate Drain Installed | YES |

Unit Data - PHOTO LOG



IMG_0492_761978821.jp..



IMG_0493_2068760601.j..

Completed By: Jearod Ferrette on 10/16/2024

Notes:

THIS UNIT IS RUNNING AT 3.4 AMPS AT 2 TURNS OUT ON THE PULLEY. CANNOT INCREASE SPEED FURTHER WITHOUT BELT SITTING TOO HIGH ON THE PULLEY. PULLEY CHANGE IS REQUIRED

Written By: Will Turnbough on 10/17/2024



National TAB

Project:10-14-24 ULTA 1697 SELMA, NC

AHU/RTU



Comfort. Under Control.
www.nationaltab.com

Diffuser Supply (GRD)

RTU1/

| Asset | | | | | | | | | |
|------------|----------|------|------|------------|----|--------|--------|-----------|-------------|
| Asset Name | Location | Type | Size | DESIGN CFM | AK | CFM(1) | CFM(2) | FINAL CFM | % to design |
| SGRD1 | VESTIBLE | SD-1 | 12" | 350 | 1 | 352 | 352 | 352 | 100.6 |
| SGRD2 | VESTIBLE | SD-1 | 12" | 370 | 1 | 390 | 390 | 390 | 105.4 |
| SGRD3 | VESTIBLE | SD-1 | 12" | 350 | 1 | 181 | 181 | 181 | 51.7 |
| SGRD4 | VESTIBLE | SD-1 | 12" | 365 | 1 | 349 | 349 | 349 | 95.6 |
| SGRD5 | VESTIBLE | SD-1 | 12" | 365 | 1 | 361 | 361 | 361 | 98.9 |
| SGRD6 | VESTIBLE | SD-1 | 12" | 350 | 1 | 328 | 328 | 328 | 93.7 |
| SGRD7 | VESTIBLE | SD-1 | 12" | 350 | 1 | 321 | 321 | 321 | 91.7 |
| SGRD8 | VESTIBLE | SD-1 | 12" | 200 | 1 | 57 | 57 | 57 | 28.5 |
| SGRD9 | VESTIBLE | SD-1 | 12" | 365 | 1 | 185 | 185 | 185 | 50.7 |
| SGRD10 | VESTIBLE | SD-1 | 12" | 365 | 1 | 345 | 345 | 345 | 94.5 |
| SGRD11 | VESTIBLE | SD-1 | 12" | 350 | 1 | 343 | 343 | 343 | 98.0 |
| SGRD12 | VESTIBLE | SD-1 | 12" | 350 | 1 | 329 | 329 | 329 | 94.0 |
| SGRD13 | VESTIBLE | SD-1 | 12" | 370 | 1 | 312 | 312 | 312 | 84.3 |
| Total | | | | 4500 | | 3853 | 3853 | 3853 | 85.62% |



National TAB

Project: 10-14-24 ULTA 1697 SELMA, NC

System/Unit: AHU/RTU



Asset: RTU2

AREA:

| Unit Data | | |
|---------------------|-----------|------------|
| | Design | Actual |
| MFG | LENNOX | LENNOX |
| Serial Num | - | 5622K03089 |
| Model Num | LGM156U4M | LGM156U4M |
| Type | RTU | RTU |
| Configuration | VERTICAL | VERTICAL |
| Num OA Filters 1 | - | 3 |
| OA Filter Size 1 | - | 14X23 |
| Num Final Filter 1 | - | 6 |
| Final Filter Size 1 | - | 24X24X2 |

| Motor Data | | |
|----------------|--------|-----------|
| | Design | Actual |
| Motor MFG | - | INTERLINK |
| Frame | - | 56HZ |
| Horsepower | 3HP | 3HP |
| Motor Rpm | 1750 | 1750 |
| Phase | 3 | 3 |
| Rated Voltage | 460V | 460V |
| Rated Amperage | 4A | 4A |

| Drive Data | |
|--------------------|-------------|
| | Actual |
| Motor Sheave Size | 3-5/8 |
| Motor Bore Size | 7/8 |
| Motor Sheave SetPt | 3 TURNS OUT |
| Fan Sheave Size | BK72 |
| Fan Sheave Bore | 1-1/8 |
| Belt CL Distance | 21-1/4 |
| Num of Belts | 1 |
| Belt Size | BX55 |
| Belt Alignment | YES |

| Test Data | | |
|------------------------|--------|-------------|
| | Design | Actual |
| SF CFM | 4800 | 3435 |
| SF RPM | - | 736 |
| RA CFM | 3745 | 2347 |
| OA CFM | 1055 | 1088 |
| RL Voltage | - | 476/477/476 |
| RL Amperage | - | 4.2 @ VFD |
| SF Rotation | - | CCW |
| RA Damper Position | - | 70% |
| Min OA Damper Position | - | 30% |
| Min OA Damper Type | - | ECON |
| OA Enthalpy Setpt | - | 5 |

| Performance Data | | |
|------------------|--------|--------|
| | Design | Actual |
| MA Plenum SP | - | -0.44" |
| Fan Suction SP | - | -0.71" |
| Fan Discharge SP | - | 0.30" |
| Total ESP | 1.00" | 0.74" |
| Fan Total SP | - | 1.01" |

| General | |
|----------------------------|--------|
| | Actual |
| Fan Rotation Correct | YES |
| Unit Filters Clean | YES |
| Condensate Drain Installed | YES |

Completed By: Jearod Ferrette on 10/16/2024

Notes:

DUCT IS INSTALLED AS SMALLER THAN DESIGNED AND AN ADDITIONAL 90 DEGREE ELBOW IS INSTALLED.

Written By: Will Turnbough on 10/17/2024



National TAB

Project:10-14-24 ULTA 1697 SELMA, NC

AHU/RTU



Comfort. Under Control.
www.nationaltab.com

Diffuser Supply (GRD)

RTU2/

| Asset | | | | | | | | | |
|--------------|----------|------|------|-------------|----|-------------|-------------|-------------|---------------|
| Asset Name | Location | Type | Size | DESIGN CFM | AK | CFM(1) | CFM(2) | FINAL CFM | % to design |
| SGRD1 | SALES | SD1 | 8" | 200 | 1 | 140 | 140 | 140 | 70.0 |
| SGRD2 | SALES | SD1 | 8" | 200 | 1 | 144 | 144 | 144 | 72.0 |
| SGRD3 | SALES | SD1 | 8" | 200 | 1 | 145 | 145 | 145 | 72.5 |
| SGRD4 | SALES | SD1 | 8" | 200 | 1 | 129 | 129 | 129 | 64.5 |
| SGRD5 | SALES | SD1 | 8" | 200 | 1 | 156 | 156 | 156 | 78.0 |
| SGRD6 | SALES | SD1 | 8" | 200 | 1 | 134 | 134 | 134 | 67.0 |
| SGRD7 | SALES | SD1 | 8" | 200 | 1 | 141 | 141 | 141 | 70.5 |
| SGRD8 | SALES | SD1 | 8" | 200 | 1 | 159 | 159 | 159 | 79.5 |
| SGRD9 | SALES | SD1 | 8" | 200 | 1 | 103 | 103 | 103 | 51.5 |
| SGRD10 | SALES | SD1 | 8" | 200 | 1 | 176 | 176 | 176 | 88.0 |
| SGRD11 | SALES | SD1 | 8" | 200 | 1 | 147 | 147 | 147 | 73.5 |
| SGRD12 | SALES | SD1 | 8" | 200 | 1 | 146 | 146 | 146 | 73.0 |
| SGRD13 | SALES | SD1 | 8" | 200 | 1 | 146 | 146 | 146 | 73.0 |
| SGRD14 | SALES | SD1 | 8" | 200 | 1 | 158 | 158 | 158 | 79.0 |
| SGRD15 | SALES | SD1 | 8" | 200 | 1 | 146 | 146 | 146 | 73.0 |
| SGRD16 | SALES | SD1 | 8" | 200 | 1 | 139 | 139 | 139 | 69.5 |
| SGRD17 | SALES | SD1 | 8" | 200 | 1 | 157 | 157 | 157 | 78.5 |
| SGRD18 | SALES | SD1 | 8" | 200 | 1 | 160 | 160 | 160 | 80.0 |
| SGRD19 | SALES | SD1 | 8" | 200 | 1 | 166 | 166 | 166 | 83.0 |
| SGRD20 | SALES | SD1 | 8" | 200 | 1 | 165 | 165 | 165 | 82.5 |
| SGRD21 | SALES | SD1 | 8" | 200 | 1 | 149 | 149 | 149 | 74.5 |
| SGRD22 | SALES | SD1 | 8" | 200 | 1 | 154 | 154 | 154 | 77.0 |
| SGRD23 | SALES | SD1 | 8" | 200 | 1 | 142 | 142 | 142 | 71.0 |
| SGRD24 | SALES | SD1 | 8" | 200 | 1 | 33 | 33 | 33 | 16.5 |
| Total | | | | 4800 | | 3435 | 3435 | 3435 | 71.56% |



National TAB

Project: 10-14-24 ULTA 1697 SELMA, NC
System/Unit: AHU/RTU



Asset: RTU3

AREA:

| Unit Data | | |
|---------------------|-----------|------------|
| | Design | Actual |
| MFG | LENNOX | LENNOX |
| Serial Num | - | 5622J06858 |
| Model Num | LGM120U4E | LGM120U4E |
| Type | RTU | RTU |
| Configuration | VERTICAL | VERTICAL |
| Num OA Filters 1 | - | 2 |
| OA Filter Size 1 | - | 14X23 |
| Num Final Filter 1 | - | 4 |
| Final Filter Size 1 | - | 20X25X2 |

| Motor Data | | |
|----------------|--------|--------|
| | Design | Actual |
| Motor MFG | - | NL |
| Frame | - | NL |
| Horsepower | 3.75HP | 3.75HP |
| Motor Rpm | NL | NL |
| Phase | 3 | 3 |
| Rated Voltage | 460V | 460V |
| Rated Amperage | NL | NL |

| Drive Data | |
|--------------------|--------|
| | Actual |
| Motor Sheave Size | DD |
| Motor Bore Size | DD |
| Motor Sheave SetPt | DD |
| Fan Sheave Size | DD |
| Fan Sheave Bore | DD |
| Belt CL Distance | DD |
| Num of Belts | DD |
| Belt Size | DD |
| Belt Alignment | DD |

| Test Data | | |
|------------------------|--------|-------------|
| | Design | Actual |
| SF CFM | 3200 | 3241 |
| SF RPM | - | 2940 |
| RA CFM | 2375 | 2347 |
| OA CFM | 825 | 901 |
| RL Voltage | - | 478/477/477 |
| RL Amperage | - | 1.1/1.3/1.2 |
| SF Rotation | - | CCW |
| RA Damper Position | - | 71% |
| Min OA Damper Position | - | 29% |
| Min OA Damper Type | - | ECON |
| OA Enthalpy Setpt | - | 5 |

| Performance Data | | |
|------------------|--------|--------|
| | Design | Actual |
| MA Plenum SP | - | -0.11" |
| Fan Suction SP | - | -0.67" |
| Fan Discharge SP | - | 0.53" |
| Total ESP | 1.00" | 0.64" |
| Fan Total SP | - | 1.2" |

| General | |
|----------------------------|--------|
| | Actual |
| Fan Rotation Correct | YES |
| Unit Filters Clean | YES |
| Condensate Drain Installed | YES |

Completed By: Jearod Ferrette on 10/16/2024

Notes:
RTU-3 SUPPLY DIFFUSERS ARE MISSING DAMPERS ON SGRD 3 AND SGRD 7.

Written By: Will Turnbough on 10/17/2024



National TAB

Project:10-14-24 ULTA 1697 SELMA, NC

AHU/RTU



Comfort. Under Control.
www.nationaltab.com

Diffuser Supply (GRD)

RTU3/

| Asset | | | | | | | | | |
|------------|----------|------|------|------------|----|--------|--------|-----------|-------------|
| Asset Name | Location | Type | Size | DESIGN CFM | AK | CFM(1) | CFM(2) | FINAL CFM | % to design |
| SGRD1 | SALES | SD1 | 10" | 275 | 1 | 362 | 333 | 273 | 99.3 |
| SGRD2 | SALES | SD1 | 10" | 275 | 1 | 412 | 372 | 393 | 142.9 |
| SGRD3 | SALES | SD1 | 10" | 275 | 1 | 343 | 315 | 244 | 88.7 |
| SGRD4 | SALON | SD1 | 10" | 350 | 1 | 321 | 287 | 308 | 88.0 |
| SGRD5 | SALON | SD1 | 10" | 350 | 1 | 306 | 277 | 293 | 83.7 |
| SGRD6 | SALES | SD1 | 10" | 275 | 1 | 285 | 257 | 273 | 99.3 |
| SGRD7 | SALES | SD1 | 10" | 275 | 1 | 371 | 340 | 348 | 126.5 |
| SGRD8 | SALES | SD1 | 10" | 275 | 1 | 360 | 332 | 346 | 125.8 |
| SGRD9 | RR | SD1 | 6" | 75 | 1 | 81 | 81 | 88 | 117.3 |
| SGRD10 | CORRIDOR | SD1 | 8" | 100 | 1 | 183 | 168 | 172 | 172.0 |
| SGRD11 | RR | SD1 | 6" | 75 | 1 | 101 | 92 | 92 | 122.7 |
| SGRD12 | CLOSET | SD1 | 12" | 600 | 1 | 426 | 392 | 411 | 68.5 |
| Total | | | | 3200 | | 3551 | 3246 | 3241 | 101.28% |



National TAB

Project: 10-14-24 ULTA 1697 SELMA, NC

System/Unit: AHU/RTU



Asset: RTU4

AREA:

| Unit Data | | |
|---------------------|-----------|------------|
| | Design | Actual |
| MFG | LENNOX | LENNOX |
| Serial Num | - | 5623C07665 |
| Model Num | LGM048U4E | LGM048U4E |
| Type | RTU | RTU |
| Configuration | VERTICAL | VERTICAL |
| Num OA Filters 1 | - | 1 |
| OA Filter Size 1 | - | 14.5x28 |
| Num Final Filter 1 | - | 4 |
| Final Filter Size 1 | - | 20X20X2 |

| Motor Data | | |
|----------------|--------|--------|
| | Design | Actual |
| Motor MFG | - | NL |
| Frame | - | NL |
| Horsepower | 1.5 | 1.5 |
| Motor Rpm | NL | NL |
| Phase | 3 | 3 |
| Rated Voltage | 460 | 460 |
| Rated Amperage | 2.3 | 2.3 |

| Drive Data | |
|--------------------|--------|
| | Actual |
| Motor Sheave Size | DD |
| Motor Bore Size | DD |
| Motor Sheave SetPt | DD |
| Fan Sheave Size | DD |
| Fan Sheave Bore | DD |
| Belt CL Distance | DD |
| Num of Belts | DD |
| Belt Size | DD |
| Belt Alignment | DD |

| Test Data | | |
|------------------------|--------|----------------|
| | Design | Actual |
| SF CFM | 1200 | 1796 |
| SF RPM | - | 2243 |
| RA CFM | 1000 | 1536 |
| OA CFM | 200 | 260 |
| RL Voltage | - | 478/476/477 |
| RL Amperage | - | 1.21/1.41/1.23 |
| SF Rotation | - | CCW |
| RA Damper Position | - | 66% |
| Min OA Damper Position | - | 34% |
| Min OA Damper Type | - | ECON |
| OA Enthalpy Setpt | - | 5 |

| Performance Data | | |
|------------------|--------|--------|
| | Design | Actual |
| MA Plenum SP | - | -0.32" |
| Fan Suction SP | - | -0.42" |
| Fan Discharge SP | - | 0.52" |
| Total ESP | 1.00" | 0.84" |
| Fan Total SP | - | 0.94" |

| General | |
|----------------------------|--------|
| | Actual |
| Fan Rotation Correct | YES |
| Unit Filters Clean | YES |
| Condensate Drain Installed | YES |

Completed By: Jearod Ferrette on 10/16/2024

Notes:
RTU-4 IN ALARM CODE 244 (BLOWER DIFFERENTIAL PRESURE SENSOR ERROR) UNABLE TO SLOW UNIT DOWN.

Written By: Will Turnbough on 10/17/2024



National TAB

Project:10-14-24 ULTA 1697 SELMA, NC

AHU/RTU



Comfort. Under Control.
www.nationaltab.com

Diffuser Supply (GRD)

RTU4/

| Asset | | | | | | | | | |
|------------|----------|------|------|------------|----|--------|--------|-----------|-------------|
| Asset Name | Location | Type | Size | DESIGN CFM | AK | CFM(1) | CFM(2) | FINAL CFM | % to design |
| SGRD1 | SALON | SD1 | 10" | 250 | 1 | 369 | 369 | 405 | 162.0 |
| SGRD2 | SALON | SD1 | 10" | 250 | 1 | 372 | 372 | 416 | 166.4 |
| SGRD3 | SALON | SD2 | 8" | 200 | 1 | 207 | 207 | 206 | 103.0 |
| SGRD4 | SALON | SD1 | 10" | 250 | 1 | 509 | 509 | 368 | 147.2 |
| SGRD5 | SALON | SD1 | 10" | 250 | 1 | 366 | 366 | 401 | 160.4 |
| Total | | | | 1200 | | 1823 | 1823 | 1796 | 149.67% |



National TAB

Project: 10-14-24 ULTA 1697 SELMA, NC
 System/Unit: FAN - Exhaust



Comfort. Under Control.
www.nationaltab.com

Asset: EF1

AREA:

| Unit Data | | |
|----------------------|------------|------------|
| | Design | Actual |
| MFG | LOREN COOK | LOREN COOK |
| Model Num | 150ACEB | 150ACEB |
| Serial Num | - | |
| Type | ROOF | |
| Configuration | VERTICAL | |

| Motor Data | | |
|-------------------------|--------|--------|
| | Design | Actual |
| Motor MFG | - | |
| Frame | - | |
| Horsepower | - | |
| Motor Rpm | - | |
| Phase | 1 | |
| Voltage (rated) | 120 | |
| Amperage (rated) | - | |
| Service Factor | - | |

| Drive Data | |
|---------------------------|--------|
| | Actual |
| Motor Sheave Size | |
| Motor Bore Size | |
| Motor Sheave SetPt | |
| Fan Sheave Size | |
| Fan Sheave Bore | |
| Belt CL Distance | |
| Num of Belts | |
| Belt Size | |

| Test Data | | |
|----------------------|--------|--------|
| | Design | Actual |
| CFM | 1750 | |
| Fan RPM | - | |
| Fan Rotation | - | |
| Motor RPM | - | |
| RL Voltage | - | |
| RL Amperage | - | |
| Suction ESP | - | |
| Discharge ESP | - | |
| Total ESP | 0.50" | |



National TAB

Project: 10-14-24 ULTA 1697 SELMA, NC
System/Unit: FAN - Exhaust



Asset: EF2

AREA:

| Unit Data | | |
|---------------|------------|------------|
| | Design | Actual |
| MFG | LOREN COOK | LOREN COOK |
| Model Num | GNVF-500 | GNVF-500 |
| Serial Num | - | NL |
| Type | INLINE | INLINE |
| Configuration | VERTICAL | VERTICAL |

| Motor Data | | |
|------------------|--------|--------|
| | Design | Actual |
| Motor MFG | - | NL |
| Frame | - | NL |
| Horsepower | NL | NL |
| Motor Rpm | NL | NL |
| Phase | 1 | 1 |
| Voltage (rated) | 115 | 115 |
| Amperage (rated) | - | NL |
| Service Factor | - | NL |

| Test Data | | |
|------------------|--------|------------|
| | Design | Actual |
| CFM | 300 | 351 |
| Fan RPM | - | |
| Fan Rotation | - | CCW |
| Motor RPM | - | |
| System SetPt | - | |
| RL Voltage | - | |
| RL Amperage | - | |
| Total ESP | 0.50" | |
| Fan Inlet SP | - | |
| Fan Discharge SP | - | Atmosphere |

Notes:

NO ACCESS TO EF-2 CONTROLS TO SLOW UNIT DOWN. DAMPERS ARE NOT INSTALL. FAN IS 117% TOTAL AIRFLOW OF DESIGN. THE FAN CAN BE BALANCED TO DESIGN ONCE AN ACCESSILBE SPEED CONTROLLER IS INSTALLED.

Written By: Jearod Ferrette on 10/16/2024



National TAB

Project:10-14-24 ULTA 1697 SELMA, NC

FAN - Exhaust



Comfort. Under Control.
www.nationaltab.com

Diffuser Ret/Exh (GRD)

EF2/

| Asset | | | | | | | | | |
|------------|----------|------|-------|------------|-----|--------|--------|-----------|-------------|
| Asset Name | Location | Type | Size | DESIGN CFM | AK | CFM(1) | CFM(2) | FINAL CFM | % to design |
| EGRD1 | RR | EAG1 | 10X10 | 150 | 1.0 | 178 | 178 | 178 | 118.7 |
| EGRD2 | RR | EAG1 | 10X10 | 150 | 1.0 | 173 | 173 | 173 | 115.3 |
| Total | | | | 300 | | 351 | 351 | 351 | 117% |

STAGING
103

SALES
101

B8
COAT CLOSET
106
WASHER/
DRYER
107
1
M-2
RESTROOM 2
108
RESTROOM 1
109
B7
CORRIDOR
110

