

GENERAL NOTES:

- ALL EXPOSED RECTANGULAR DUCTWORK SHALL BE INTERNALLY LINED. REFER TO SPECIFICATIONS AND DETAILS FOR MORE INFORMATION.

KEY NOTES: (X)

- ROOFTOP UNIT, ON A FULL PERIMETER ROOF CURB, PROVIDE WITH CURB ADAPTOR AS REQUIRED. REFER TO MECHANICAL ROOF PLAN.
- EXISTING SUPPLY AIR DUCT FROM UNIT ON ROOF TO BE REUSED WHERE POSSIBLE. CONTRACTOR SHALL PROVIDE NEW CURB ADAPTOR AND FITTINGS AS REQUIRED FOR CONNECTION. COORDINATE SIZES WITH EXISTING.
- EXISTING RETURN AIR DUCT FROM UNIT ON ROOF TO BE REUSED WHERE POSSIBLE. CONTRACTOR SHALL PROVIDE A NEW CURB ADAPTOR AND FITTINGS AS REQUIRED FOR CONNECTION. COORDINATE SIZES WITH EXISTING.
- DUCTWORK LOCATED ABOVE FINISHED CEILING. COORDINATE WITH STRUCTURE. TYPICAL.
- MAINTAIN NEC CLEARANCE TO ELECTRICAL GEAR, TYPICAL.
- PROVIDE MANUAL BALANCING DAMPER, TYPICAL.
- RESTROOM CEILING EXHAUST FAN OPERATED BY LIGHT SWITCH.
- EXHAUST DUCT UP THRU EXISTING CURB TO GOOSENECK ON ROOF, SEE ROOF PLAN.
- SLOPE EXHAUST DOWN @ 1/4" PER FT TO DISHWASHER HOOD STAINLESS STEEL EXHAUST. COORDINATE WITH HOOD DISHWASHER HOOD. TYPICAL.
- MAKE-UP AIR CONNECTIONS TO SUPPLY AIR PLENUM IN FRONT OF HOOD. REFER TO HOOD DRAWINGS SHEETS FOR MORE INFORMATION. TYPICAL.
- KITCHEN HOOD EXHAUST FAN ON ROOF. REFER TO MECHANICAL ROOF PLAN. REFER TO HOOD DRAWINGS FOR ADDITIONAL INFORMATION.
- DISHWASHER EXHAUST FAN ON ROOF. REFER TO MECHANICAL ROOF PLAN.
- KITCHEN HOOD EXHAUST DUCT UP TO FAN ON ROOF. COORDINATE WITH STRUCTURE. DUCT SHALL BE ENCAPSULATED WITH EXHAUST DUCT WRAP AS REQUIRED BY CODE. REFER TO DETAIL ON SHEET M2.1. DUCT SHALL BE 16 GA. EXTERNALLY WELDED LIQUID TIGHT BLACK IRON.
- KITCHEN EXHAUST HOOD DUCT DOWN AND TRANSITION TO HOOD COLLAR. WELD DUCT TO HOOD COLLAR AS REQUIRED. TYPICAL. REFER TO HOOD DRAWINGS FOR MORE INFORMATION.
- KITCHEN EXHAUST HOOD FURNISHED BY OWNER, INSTALLED BY MECHANICAL CONTRACTOR. TYPICAL OF 4. REFER TO HOOD DRAWINGS.
- DISHWASHER EXHAUST DUCT UP TO FAN ON ROOF. DUCTWORK SHALL BE STAINLESS STEEL SEALED LIQUID TIGHT.
- PERFORATED GRILLE PER DETAIL ON SHEET M2.1. TYPICAL FOR THIS DEVICE.
- DUCT MOUNTED SMOKE DETECTOR FOR UNIT SHUT DOWN. DETECTOR SHALL ACTIVATE A VISIBLE & AUDIBLE SUPERVISORY SIGNAL @ A CONSTANTLY ATTENDED LOCATION. TYPICAL.
- EXISTING DUCT WORK AND SIDEWALL GRILLES TO REMAIN INTACT AND BE REUSED. DUCT TO BE CLEANED, PRIMED, AND PAINTED. COORDINATE COLOR WITH OWNER/ARCHITECT.
- ROOFTOP UNIT SMOKE DETECTOR RESETS, MOUNTED ON WALL.
- T-STATS FOR REMOTE SENSORS, MOUNT VERTICAL @ 54" A.F.F. IN OFFICE. REFER TO DETAIL ON SHEET. COORDINATE FINAL LOCATION WITH OWNER.
- PROVIDE THERMOSTAT REMOTE SENSOR ON WALL AT 54" A.F.F. INTERLOCK WITH THERMOSTAT IN OFFICE AREA.
- MAKE-UP AIR UNIT ON ROOF. REFER TO MECHANICAL ROOF PLAN. INTERLOCK WITH HOOD CONTROLS. REFER TO HOOD DRAWINGS FOR MORE INFORMATION.
- MAKE-UP AIR DUCT UP TO UNIT ON ROOF, TRANSITION AS INDICATED.
- PROVIDE AND CONNECT NEW SPIRAL DUCT EQUAL TO AND MATCHING EXISTING. CLEAN, PRIME, AND PAINT PER OWNER/ARCHITECT.
- EXISTING RETURN AIR PLENUM BOX TO REMAIN AND BE REUSED.
- PROVIDE COMBINATION TEMPERATURE AND HUMIDITY SENSOR HIGH ON WALL UNLESS NOTED OTHERWISE. INTERLOCK W/ THERMOSTAT IN OFFICE.
- COMBUSTION AIR VENTING FOR WATER HEATER LOCATED IN MECHANICAL ROOM. REFER TO PLUMBING DRAWINGS.
- PROVIDE NEW SIDEWALL GRILLE MATCHING IN SIZE, STYLE, AND AIRFLOW, EQUAL TO EXISTING SIDEWALL GRILLES THAT ARE TO REMAIN. MOUNT NEW GRILLES ON SIDE OF DUCT MATCHING EXISTING ORIENTATION TO MAXIMIZE THROW. PRIME AND PAINT ALL NEW GRILLES TO MATCH DUCT.
- NEW SINGLE GRILLE TO BE MOUNTED ON BOTTOM OF DUCT.
- PROVIDE AND INSTALL NEW INTERNALLY LINED RETURN AIR PLENUM BOX. CONNECT TO RETURN AIR GRILLES AS INDICATED.
- PROVIDE AND INSTALL NEW SUPPLY PLENUM. HOLD SUPPLY DUCT HIGH TO ALLOW FOR RETURN TO PASS UNDERNEATH WITHOUT CONFLICT.
- NEW EXHAUST FAN ON EXISTING CURB. COORDINATE SIZE AND LOCATION OF REQUIRED CURB ADAPTOR.
- NEW EXHAUST FAN ON NEW CURB.
- DISHWASHER HOOD EXHAUST CONNECTION. COORDINATE HOOD PROVIDED.
- SLOPE EXHAUST DOWN @ 1/4" PER FT TO KITCHEN HOOD. TYPICAL.
- PROVIDE CLEANOUT AT ELBOWS IN GREASE DUCT. PROVIDE SIGN THAT READS "GREASE DUCT CLEANOUT, DO NOT OBSTRUCT".

BRANCH DUCT SIZING CHART

CFM RANGE	BRANCH DUCT SIZE(UNLESS NOTED OTHERWISE)
0 TO 74	6"ø
75 TO 170	8"ø
171 TO 300	10"ø
301 TO 500	12"ø
501 TO 650	14"ø
651 TO 750	16"ø

PRIORITY OF CONSTRUCTION SPACE

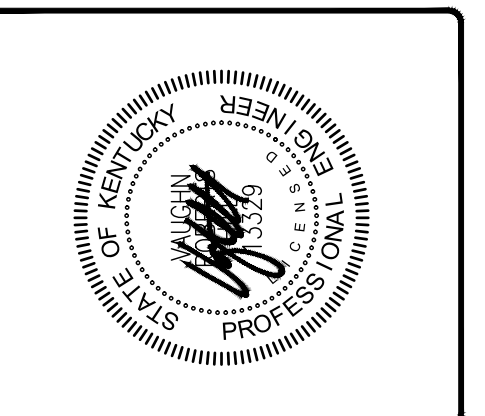
- THE FOLLOWING IS THE ORDER OF PRIORITY FOR CONSTRUCTION
- FIRST: DUCTWORK
 - SECOND: FIRE PROTECTION PIPING
 - THIRD: ANY PIPING WITH SLOPE REQUIREMENTS
 - FOURTH: OTHER PIPING
 - FIFTH: CONDUIT

SCOPE OF WORK & ARCHIVE PLAN NOTE

SCOPE IS TO REMOVE ALL EXISTING KITCHEN EQUIPMENT, HVAC AND FANS AS NOTES ON PLANS. WIRING & CONDUIT RELATED TO THE ITEMS TO ALSO BE REMOVED. OWNER IS INTENDING TO RE-USE ELECTRICAL PANELS AND ADD NEW AS INDICATED.

EXISTING INFORMATION INDICATED IS FROM ARCHIVE PLANS FURNISHED BY OWNER. (TILTED KILT AND ITALIANI'S) THIS INFORMATION HAS BEEN VERIFIED BY DESIGN CONSULTANT AS BEST IT CAN BE. SHOULD CONTRACTOR SEE DAMAGED EQUIPMENT, IMMEDIATELY CONTACT ENGINEER AND G.C.

Ford's GARAGE
PRIME BURGERS | CRAFT BEER
4911 HOUSTON ROAD
FLORENCE, KY 41042



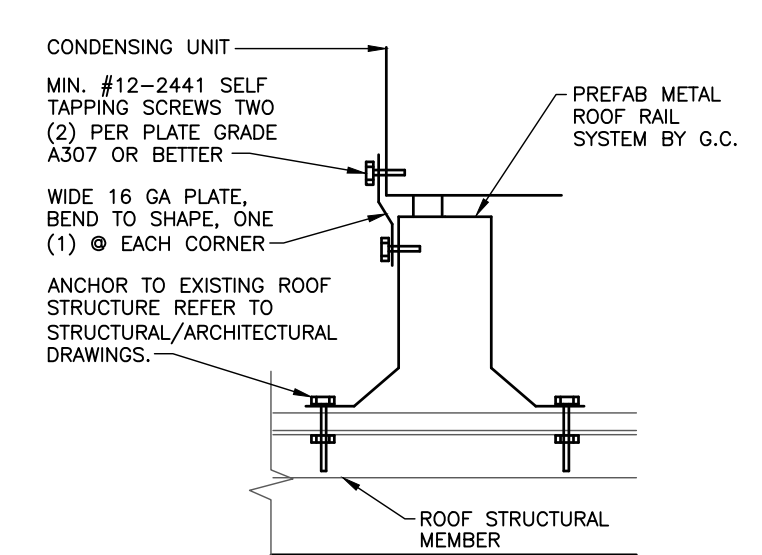
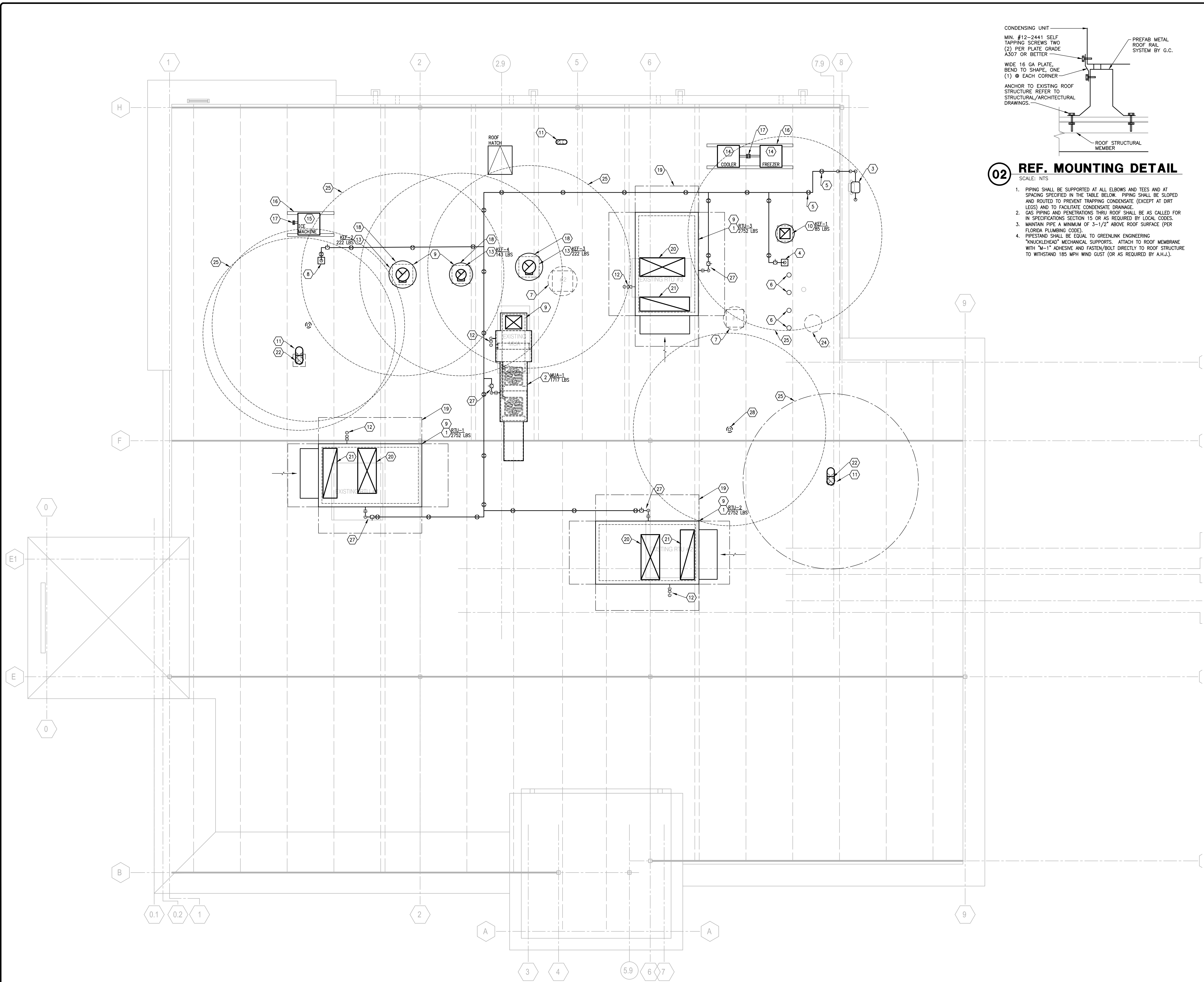
The Roberts Group PSC
2930 C Southland Drive - Lexington, KY 40503
859-276-2006 | 859-276-2901 Facsimile

1
2
3
4
5

PLAN DATE: 06-20-22
PROJECT NUMBER: 22091
BUILDING TYPE: TENANT FIT-UP
DRAWN BY: TRG

LS DESIGN GROUP PLLC
LONNIE SMITH ARCHITECT
phone 859.624.3755
fax 859.624.3745
2130 Lexington Road, Suite H
Richmond, KY 40475

MECHANICAL PLAN
M1.1



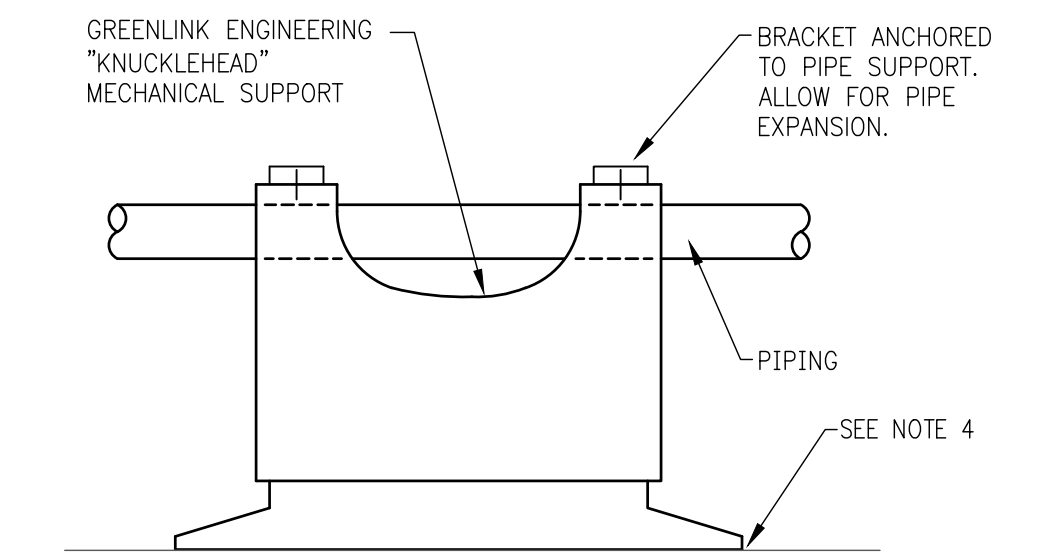
- 02 REF. MOUNTING DETAIL**
SCALE: NTS
1. PIPING SHALL BE SUPPORTED AT ALL ELBOWS AND TEES AND AT SPACING SPECIFIED IN THE TABLE BELOW. PIPING SHALL BE SLOPED AND ROUTED TO PREVENT TRAPPING CONDENSATE EXCEPT AT DIRT LEGS AND TO FACILITATE CONDENSATE DRAINAGE.
 2. GAS PIPING AND PENETRATIONS THRU ROOF SHALL BE AS CALLED FOR IN SPECIFICATIONS SECTION 15 OR AS REQUIRED BY LOCAL CODES, (PER FLORIDA PLUMBING CODES).
 3. MAINTAIN PIPE A MINIMUM OF 3-1/2" ABOVE ROOF SURFACE (PER FLORIDA PLUMBING CODES).
 4. PRESTAND SHALL BE EQUAL TO GREENLINK ENGINEERING "KNUCKLEHEAD" MECHANICAL SUPPORTS. ATTACH TO ROOF MEMBRANE WITH M-11 ADHESIVE AND FASTEN/BOLT DIRECTLY TO ROOF STRUCTURE TO WITHSTAND 185 MPH WIND GUST (OR AS REQUIRED BY A.H.J.).

GENERAL NOTES:

- A. VERIFY THAT VENTS THRU ROOF ARE A MINIMUM OF 10'-0" AWAY FROM ALL OUTSIDE AIR INTAKES OF ALL EXISTING AND NEW MECHANICAL EQUIPMENT ON THE ROOF.
- B. COORDINATE WITH STRUCTURE AND ALL MECHANICAL AND ELECTRICAL EQUIPMENT AND PIPING BELOW THE ROOF STRUCTURE.
- C. REFER TO ROOFTOP UNIT SCHEDULE ON SHEET M3.1 FOR ROOFTOP UNIT WEIGHTS.
- D. REFER TO HOOD AND EXHAUST DETAIL DRAWINGS FOR ADDITIONAL INFORMATION.

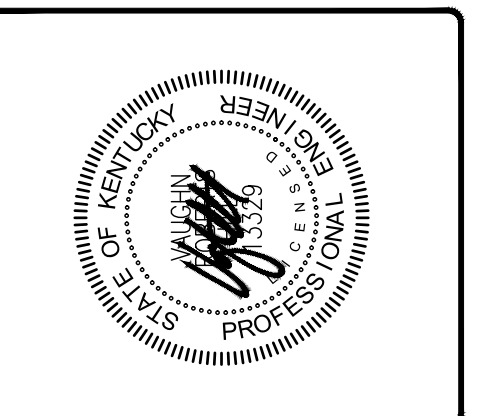
- KEY NOTES:**
1. ROOFTOP UNIT WITH FULL PERIMETER CURB. FIELD INSULATE ROOF CURB.
 2. MAKEUP AIR UNIT MOUNTED ON A FULL PERIMETER ROOF CURB. FIELD INSULATE ROOF CURB. REFER TO FOOD SERVICE DRAWINGS.
 3. GAS METER BELOW. STUB GAS PIPING INTO MECHANICAL ROOM AND RISE UP THRU ROOF. SEE PLUMBING DRAWINGS FOR MORE GAS PIPING INFORMATION.
 4. GAS PIPING DOWN THRU ROOF TO WATER HEATERS. SEAL ROOF PENETRATION WEATHERTIGHT PER ROOF SYSTEM REQ'TS (TYPICAL). SEE PLUMBING DRAWINGS FOR PIPING DIAGRAM AND PIPE SIZES.
 5. TYPICAL PIPE SUPPORT ON ROOF. SEE DETAIL, THIS SHEET FOR PRODUCT AND SPACING INFORMATION.
 6. CONCENTRIC GAS VENT FROM WATER HEATER IN MECHANICAL ROOM BELOW. SEE PLUMBING DRAWINGS FOR ADDITIONAL INFORMATION.
 7. EXISTING FAN AND CURB TO BE REMOVED, FRAME-IN OPENING, REPAIR ROOF, AND SEAL WEATHERTIGHT.
 8. GAS PIPING DOWN TO COOK LINE. ASSURE THAT ROOF PENETRATION IS WEATHERTIGHT, BY THE PLUMBING CONTRACTOR.
 9. NEW FAN OR EQUIPMENT TO UTILIZE EXISTING OPENING AND CURB. COORDINATE EXISTING CURB SIZE WITH NEW EQUIPMENT, ETC., AND PROVIDE CURB ADAPTOR AS REQUIRED. FINAL INSTALLATION SHALL BE WEATHERTIGHT. CURB ADAPTOR TO BE FIELD INSULATED.
 10. DISHWASHER EXHAUST FAN, MOUNTED ON A FULL PERIMETER ROOF CURB. FIELD INSULATE CURB. INTERLOCK FAN WITH DISHWASHER CONTROLS. TO BE LOCATED AT SAME LOCATION AS FAN BEING REMOVED.
 11. RESTROOM EXHAUST UP THRU ROOF AND TERMINATE WITH FULL SIZE GOOSENECK WITH BIRDCREEN. PENETRATION TO BE WEATHERTIGHT.
 12. PROVIDE A VENTED AND TRAPPED CONDENSATE DRAIN, PIPE AND SPILL TO NEAR SCUPPER. FIELD VERIFY SCUPPER LOCATION, TYPICAL.
 13. KITCHEN HOOD EXHAUST FAN, MOUNT ON FULL PERIMETER NON-COMBUSTIBLE ROOF CURB. INTERLOCK WITH HOOD CONTROLS. FAN DISCHARGE SHALL BE A MINIMUM OF 2" ABOVE PARAPET.
 14. CONDENSING UNIT FOR WALK-IN BOX. FURNISHED WITH THE KITCHEN EQUIPMENT AND INSTALLED BY THE MECHANICAL CONTRACTOR.
 15. CONDENSING UNIT FOR ICE MACHINE. FURNISHED WITH THE KITCHEN EQUIPMENT AND INSTALLED BY THE MECHANICAL CONTRACTOR.
 16. ROOF RAIL SYSTEM FOR CONDENSING UNIT SUPPORT.
 17. REFRIGERANT LINE ROOF PENETRATION.
 18. PROVIDE A GREASE CONTAINMENT SYSTEM AT EACH KITCHEN EXHAUST FAN. COORDINATE WITH FOOD SERVICE DRAWINGS FOR EXHAUST FANS BEING FURNISHED.
 19. SERVICE CLEARANCE FOR MECHANICAL EQUIPMENT, TYPICAL.
 20. SUPPLY AIR DUCT DOWN THROUGH ROOF, REFER TO MECHANICAL PLAN FOR SIZE AND CONTINUATION, TYPICAL.
 21. RETURN AIR DUCT DOWN THROUGH ROOF, REFER TO MECHANICAL PLAN FOR SIZE AND CONTINUATION, TYPICAL.
 22. PROVIDE INSULATED CURB CAP ON EXISTING CURB WITH PIPE PORTAL TO ACCOMMODATE FULL SIZE EXHAUST DUCT PENETRATION TO GOOSENECK. SEAL WEATHERTIGHT.
 23. DISHWASHER EXHAUST DUCT DOWN THROUGH ROOF, REFER TO MECHANICAL PLAN FOR SIZE, CONTINUATION AND ADDITIONAL INFORMATION.
 24. EXISTING GAS FIRED UNIT HEATER AND FLUE TO REMAIN.
 25. EXHAUST CLEARANCE TO ANY OUTDOOR AIR INTAKE, TYPICAL.
 26. SEE PLUMBING SHEETS FOR GAS PIPING CONTINUATION.
 27. 7" W.C. GA PIPING WITH SHUTOFF VALVE, DIRT LEG, AND UNION FOR CONNECTION TO UNIT. SEE PLUMBING DRAWINGS FOR PIPING SCHEMATIC AND PIPE SIZES TYPICAL.
 28. LOCATION OF 4" VTR. (TYP. 2) SEE SOIL, WASTE AND VENT FLOOR PLAN, SHEET P1.1.

PIPE SIZE	MODEL NO.	MAX. SPACING
3/4"	Standard	6'
1"	Standard	7'
1 1/2"	Large	8'
1 1/2"	Large	9'
2"	Large	10'
2 1/2"	Large	12'
3"	Large	13'



03 ROOF PIPING SUPPORT DETAIL
SCALE: NTS

PRIORITY OF CONSTRUCTION SPACE
THE FOLLOWING IS THE ORDER OF PRIORITY FOR CONSTRUCTION
A. FIRST: DUCTWORK
B. SECOND: FIRE PROTECTION PIPING
C. THIRD: ANY PIPING WITH SLOPE REQUIREMENTS
D. FOURTH: OTHER PIPING
E. FIFTH: CONDUIT



The Roberts Group PSC
930 C Southland Drive - Lexington, KY 40503
859-276-2006 | 859-276-2901 Facsimile

1
2
3
4
5

PLAN DATE: 06-20-22
PROJECT NUMBER: 22091
BUILDING TYPE: TENANT FIT-UP
DRAWN BY: TRG

LS DESIGN GROUP PLLC
LONNIE SMITH ARCHITECT
phone 859.624.3755
fax 859.624.3745
2130 Lexington Road, Suite H
Richmond, KY 40475