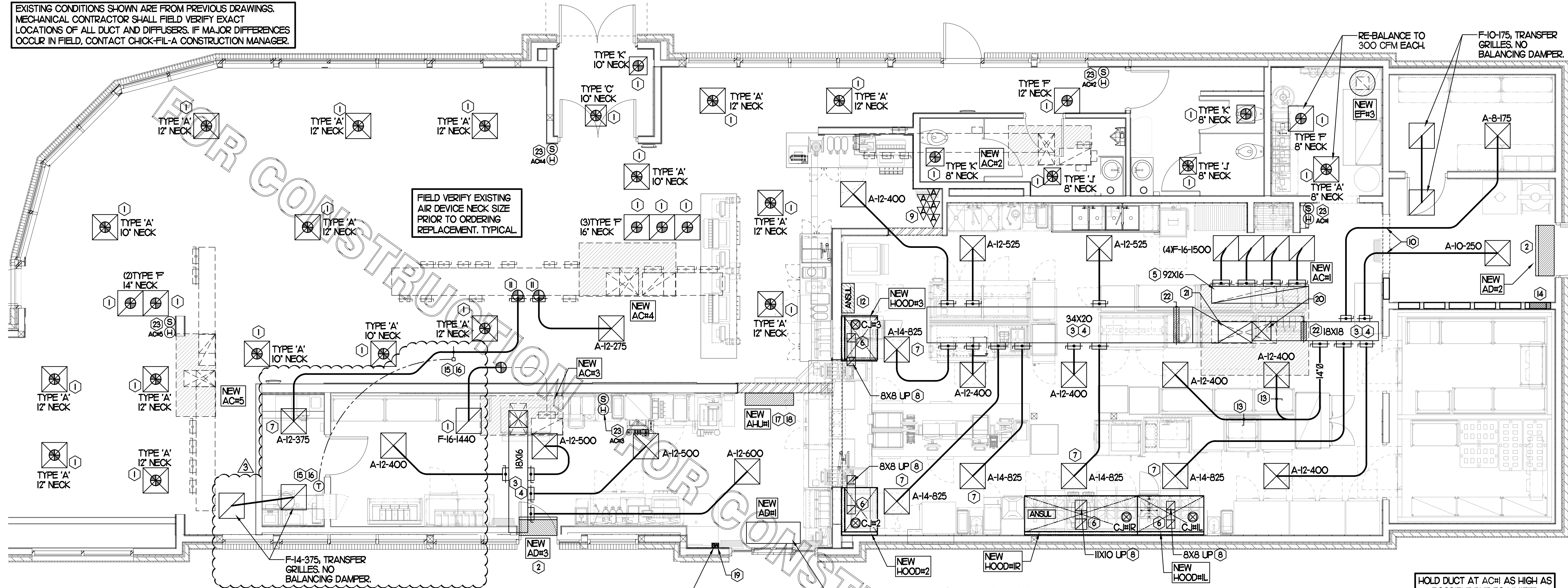


EXISTING CONDITIONS SHOWN ARE FROM PREVIOUS DRAWINGS. MECHANICAL CONTRACTOR SHALL FIELD VERIFY EXACT LOCATIONS OF ALL DUCT AND DIFFUSERS. IF MAJOR DIFFERENCES OCCUR IN FIELD, CONTACT CHICK-FIL-A CONSTRUCTION MANAGER.



FIELD VERIFY EXISTING AIR DEVICE NECK SIZE PRIOR TO ORDERING REPLACEMENT. TYPICAL.

LEGEND	
A-12-400	TYPE - NECK SIZE - CFM
	SPIN-IN FITTING, MVD, NO SCOOP
	REMOTE TEMPERATURE SENSOR
	REMOTE HUMIDITY SENSOR
	SMOKE DETECTOR
	GREASE ACCESS DOOR TYPE
	DIRECTION OF THROW
	KEY NOTE REFERENCE
	EXISTING START COLLAR
	EXISTING RUNOUT TO REMAIN
	EXISTING RETURN/EXHAUST (TYP)
	EXISTING SUPPLY DIFFUSER (TYP)
	NEW RETURN/EXHAUST, UNO. (TYP)
	NEW SUPPLY DIFFUSER, UNO. (TYP)
	NEW DUCT (TYP)
	SMOKE DETECTOR TEST/RESET STATION

SHEET NOTES

- DUCT SIZES SERVING DIFFUSERS AND GRILLES ARE SAME SIZE AS DIFFUSER OR GRILLE NECK UNLESS NOTED OTHERWISE.
- REFER TO ELEVATIONS ON M2.1 AND HOOD DETAILS ON M4.1 FOR CAPTURE-LET FANS DUCTING REQUIREMENTS.
- HARDPIPE SHALL BE USED FOR ALL TAKE-OFFS EXCEPT WHERE ALLOWED BY DETAIL 1/M3.1. USE OF FLEXIBLE DUCT SHALL BE LIMITED TO THOSE SITUATIONS WHERE NO OTHER MEANS TO ACCOMPLISH ROUTING IS POSSIBLE.
- COORDINATE NEW WORK WITH EXISTING CONDUITS, STRUCTURE AND PIPING. FIELD VERIFY EXISTING CONDITIONS PRIOR TO COMMENCING WORK. CONTRACTOR TO NOTIFY DESIGN TEAM WITHOUT DELAY IF ACTUAL LOCATION OF EXISTING MECHANICAL EQUIPMENT DOES NOT MATCH FLOOR PLAN.
- MECHANICAL CONTRACTOR SHALL BALANCE HVAC SYSTEM AS SHOWN ON THIS PLAN & IN SCHEDULES ON SHEET M3.1. IF AIRFLOWS DIFFER BY MORE THAN 5%, CONTACT CFA CONSTRUCTION MANAGER. TEST AND BALANCE REPORT SHALL BE DONE PRIOR TO STORE TURNOVER AND SUBMITTED TO CFA'S CONSTRUCTION MANAGER.

KEY NOTES (THIS SHEET ONLY)

- CONNECT NEW AIR DEVICE TO EXISTING TAKE-OFF. IF NECESSARY, MECHANICAL CONTRACTOR SHALL PROVIDE AND INSTALL NEW DUCT IN ORDER TO MAKE CONNECTION TO AIR DEVICE IN NEW LOCATION. ANY FLEX DUCT USED SHALL NOT BE LONGER THAN 4'-0". SEE DETAIL 1/M3.1. COORDINATE AIR DEVICE LOCATIONS WITH ARCHITECTURAL REFLECTED CEILING PLAN.
- AIR CURTAIN MOUNTED OVER DOOR HEADER AT 7'-2" AFF TO BOTTOM OF UNIT. PROVIDE BLOCKING IN WALL BEHIND AIR CURTAIN. USE FACTORY PRE-PUNCHED MOUNTING HOLES ON BACK SIDE OF AIR CURTAIN ONLY. ATTACH AIR CURTAIN TO WALL USING 3/8" LAG BOLTS, LENGTH AS REQUIRED TO FULLY PENETRATE BLOCKING. LOCATE MAGNETIC CONTACT TYPE MICROSWITCH IN DOOR FRAME ON STRIKE SIDE.
- BRANCH TAKE-OFFS SHALL NOT BE LOCATED CLOSER THAN 3'-0" FROM ANY ELBOW INCLUDING THE SUPPLY AIR DROP FROM CURB.
- TRANSITION IN VERTICAL DROP FROM FULL SIZE OF CURB OPENING TO SIZE SHOWN. TRANSITION WITHIN CURB WHERE REQUIRED TO AVOID STRUCTURE. PROVIDE TURNING VANES IN ELBOWS, INCLUDING THE SUPPLY AIR DROP FROM UNIT.
- TRANSITION IN VERTICAL DROP FROM FULL SIZE OF CURB OPENING TO SIZE SHOWN. TRANSITION WITHIN CURB WHERE REQUIRED TO AVOID STRUCTURE. NO TURNING VANES IN ELBOW.
- HALTON MBD DAMPER AT HOOD COLLAR BY MECHANICAL CONTRACTOR. REFER TO SHEET M2.1 AND M4.1 FOR FURTHER INFORMATION.
- MECHANICAL CONTRACTOR TO ADJUST PATTERN DEFLECTORS TO THROW STRAIGHT DOWN.
- GREASE DUCT UP THRU ROOF FROM FULL SIZE OF MBD COLLAR. OFFSETS THRU ROOF NOT TO BE GREATER THAN 45 DEGREES. SEE SHEET M1.2 FOR CONTINUATION.
- MOUNT NEW SMOKE DETECTOR TEST/RESET STATIONS FOR ALL A/C UNITS ON WALL. COORDINATE EXACT LOCATION WITH KITCHEN ELEVATIONS AND ELECTRICAL. CONTACT SUNCOAST ENVIRONMENTAL CONTROLS AT 1-877-544-6679 TO PURCHASE A NEW SMOKE DETECTOR TEST/RESET STATION FOR EACH RTU.
- ROUTE DUCT BETWEEN WALL STUDS ABOVE CEILING. COORDINATE WITH ARCH AND STRUCTURAL FOR EXACT LOCATION. USE IT WRAP AT WALL PENETRATION.
- PROVIDE & INSTALL NEW SPIN-IN COLLAR AND ROUTE NEW DUCT TO NEW GRILLE AS SHOWN.
- ANSUL UTILITY CABINET. LOCATE TOP OF CABINET 0'-2" BELOW CEILING. COORDINATE FINAL MOUNTING LOCATION WITH KITCHEN EQUIPMENT.
- RUSKIN MODEL MDRS25 OR EQUIVALENT MANUAL VOLUME DAMPER WITH LOCKING QUADRANT HANDLE.
- ELECTRICAL CONTRACTOR TO PURCHASE AND INSTALL NEW CFA T500 TEMP CONTROL PANEL WITH AUTOMATIC TIMER FOR LIGHTING CONTROLS AND 6-THERMOSTAT TEMP CONTROL CABINET. COORDINATE WITH ELECTRICAL CONTRACTOR FOR NEW LOCATION OF TEMP CONTROL CABINET. CONTROL WIRING TERMINATIONS BETWEEN NEW THERMOSTATS, NEW SENSORS, AND NEW/EXISTING RTUS BY MECHANICAL CONTRACTOR. REFER TO WIRING DIAGRAM ON SHEET M4.1.

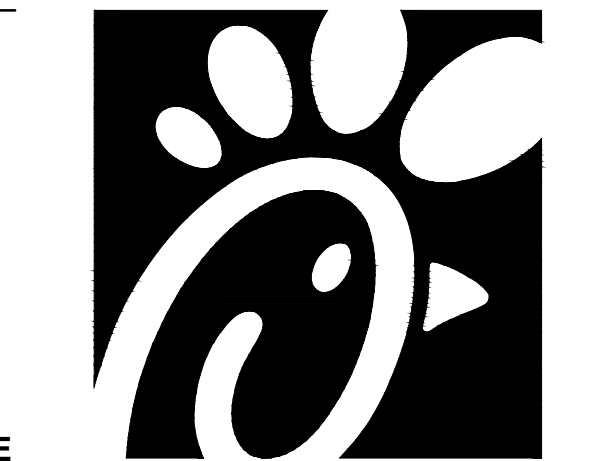
MECHANICAL FLOOR PLAN
SCALE: 1/4"=1'-0"

H.E.S. SYSTEM
MECHANICAL CONTRACTOR TO PROVIDE AND INSTALL SUNCOAST H.E.S. SYSTEM FOR ALL NEW HOODS. SEE HOOD FAN/EQUIPMENT INTERLOCK WIRING DIAGRAM ON SHEET M4.1 FOR MORE INFORMATION.

HOLD DUCT AT AC#1 AS HIGH AS POSSIBLE DUE TO LIMITED CLEARANCE ABOVE CEILING.

G.C. TO HIRE VENTILATION CLEANING CONTRACTOR CERTIFIED BY NATIONAL AIR DUCT CLEANERS ASSOCIATION (NADCA) TO CLEAN ALL EXISTING DUCTWORK THAT IS TO REMAIN.

TOTAL AIR BALANCE SCHEDULE									
EQUIPMENT MARK	ACH1 (NEW)	ACH2 (NEW)	ACH3 (NEW)	ACH4 (NEW)	ACH5 (NEW)	EF#1 (NEW)	EF#2 (NEW)	EF#3 (NEW)	TOTAL
SERVES	KITCHEN	SIDE DINING	DRIVE THRU	MAIN DINING	PLAY DINING	HOOD#1L HOOD#1R	HOOD#2 HOOD#3	REST-ROOMS	
SUPPLY AIR CFM	8,000	1,790	2,000	4,000	1,750				17,540
RETURN AIR CFM	6,000	1,290	1,440	2,940	1,450				13,120
OUTSIDE AIR CFM	2,000	500	560	1,060	300				+4,420
EXHAUST CFM						1,913	1,402	300	-3,615
PRESSURIZATION									+805
REMARKS	ADJUST AND VERIFY BALANCE OF ALL HVAC EQUIPMENT IS AS SHOWN IN ORDER TO MAINTAIN BUILDING AIR BALANCE.								



Chick-fil-A

Chick-fil-A
5200 Buffington Road
Atlanta, Georgia 30349



Kurzynske & Associates
CONSULTING ENGINEERS
2705 Lebanon Pike - Suite One
Nashville, Tennessee 37214
Telephone: (615) 255-5203

Kurzynske & Associates License
No. F-0823, Expires 12/31/23



CHICK-FIL-A
Peters Creek
3343 Sides Branch Road
Winston-Salem, NC 27127

FSR#02681

BUILDING TYPE / SIZE: S08N-R
RELEASE: v12.20

REVISION SCHEDULE		
NO.	DATE	DESCRIPTION
3	01/06/23	CD Coordination

CONSULTANT PROJECT # 22116.HF.R
PRINTED FOR CONSTRUCTION
DATE 09/29/2022
DRAWN BY DSF

Information contained on this drawing and in all digital files produced for above named project may not be reproduced in any manner without express written or verbal consent from authorized project representatives.
MECHANICAL FLOOR PLAN
SHEET NUMBER

M1.1