

THIS DRAWING AND ITS REPRESENTATIONS ARE THE PROPERTY OF HAL-PE ASSOCIATES AND MAY NOT BE REPRODUCED, PUBLISHED, DISTRIBUTED, OR USED IN ANY MANNER WITHOUT WRITTEN PERMISSION OF HAL-PE ASSOCIATES. ALL RIGHTS RESERVED. COPYRIGHT HAL-PE ASSOCIATES. ALL RIGHTS RESERVED. 2024 ©



NOTE: MAINTAIN 10'-0" HORIZONTAL OR 3'-0" VERTICAL CLEARANCE BETWEEN O.A. MARKS AND CONTAMINANTS IN ACCORDANCE WITH SECTION 401.4.08-01A.C.
FIRST FLOOR PLAN - HVAC
 SCALE: 1/4" = 1'-0"

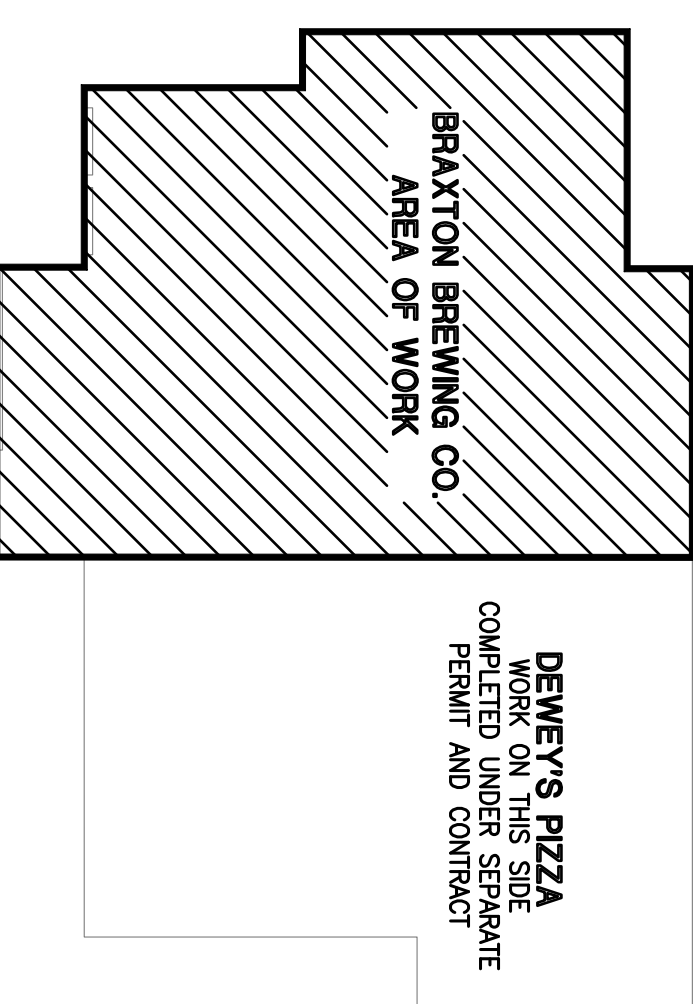


HVAC LEGEND

	RECTANGULAR DUCTWORK AND SIZE		2' x 2' CEILING DIFFUSER
	ROUND DUCTWORK AND SIZE		2' x 2' EGLEGATE RETURN OR TRANSFER GRILLE
	FLEXIBLE DUCTWORK AND SIZE		1' x 1' CEILING DIFFUSER
	THERMOSTAT		EXHAUST GRILLE
	REMOTE TEMPERATURE SENSOR		DUCT MOUNTED SUPPLY GRILLE
	CO2 SENSOR		SIDEWALL MOUNTED RETURN OR TRANSFER REGISTER
	AUDIBLE / VISUAL SIGNALING DEVICE		CEILING DIFFUSER, NECK SIZE, AND CM
	DRAWING NOTE SYMBOL AND NUMBER		RETURN GRILLE AND DUCT SIZE
	AIR DUCT SMOKE DETECTOR		SUPPLY GRILLE, FACE SIZE, AND CM
	1\"/>		RETURN REGISTER AND FACE SIZE
	HIGH SIDEWALL MOUNTED		TRANSFER REGISTER AND FACE SIZE

DRAWING NOTES

- 1) FIELD VERIFY THERMOSTAT LOCATION WITH OWNER BEFORE ROUGH-IN.
- 2) FIELD VERIFY REMOTE TEMPERATURE SENSOR LOCATION WITH OWNER BEFORE ROUGH-IN.
- 3) AUDIBLE / VISUAL SIGNALING DEVICE LOCATED IN A CONSTRAINTY ATTENDED LOCATION (FIELD VERIFY LOCATION WITH OWNER BEFORE ROUGH-IN).
- 4) DUCTWORK UP TO ROOFTOP UNIT RTU-1 (SEE SECOND FLOOR PLAN FOR CONTINUATION).
- 5) DUCTWORK UP TO ROOFTOP UNIT RTU-2 (SEE SECOND FLOOR PLAN FOR CONTINUATION).
- 6) 8\"/>
- 7) 8\"/>
- 8) EXHAUST DUCT THROUGH WALL TO BIRDPROOF WALL CAP. EXHAUST SHALL VERIFY HANDING HEIGHT WITH ARCHITECT/OWNER BEFORE ROUGH-IN).
- 9) FIELD VERIFY CO2 SENSOR LOCATION WITH OWNER BEFORE ROUGH-IN.
- 10) DUCTWORK LOCATED ABOVE LAY-IN CEILING.
- 11) EQUIPMENT SERVING DENEY'S PIZZA SIDE (SHOWN FOR REFERENCE). SEE SEPARATE PERMIT DRAWINGS FOR DENEY'S PIZZA FOR CONTINUATION.
- 12) NEW ROOFTOP UNIT LOCATED ON ROOF (FIELD VERIFY LOCATION WITH OWNER/STRUCTURAL ENGINEER BEFORE ROUGH-IN).
- 13) 30x20 RETURN AIR DUCT WITH 90° ELBOW UP AND TERMINATED DOWN WITH ADJACENT SUPPLY DUCT. OPEN ENDED DUCT EXPANDED METAL OVER END AS REQUIRED.
- 14) MANUFACTURER'S REQUIRED SERVICE CLEARANCES.

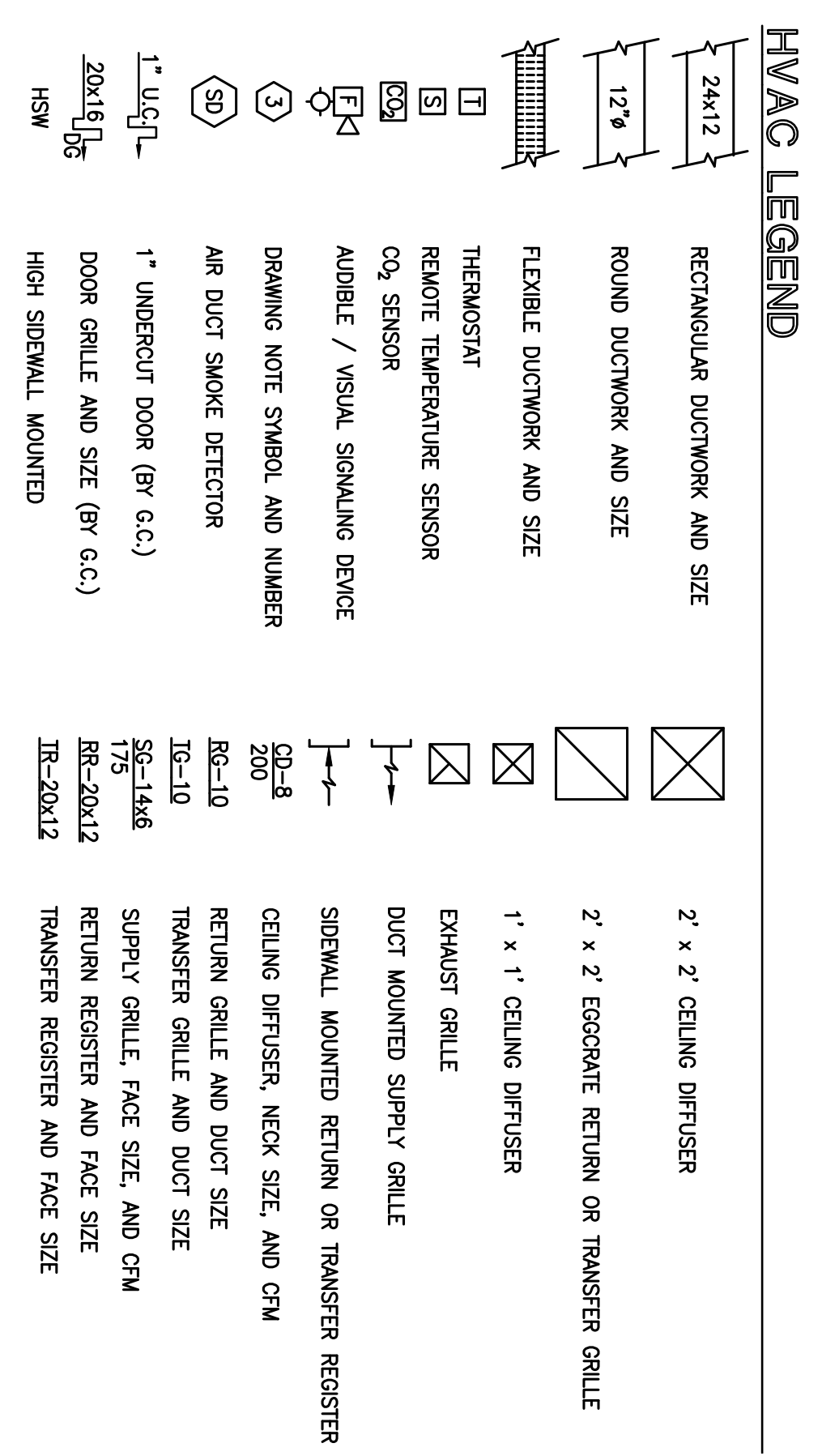
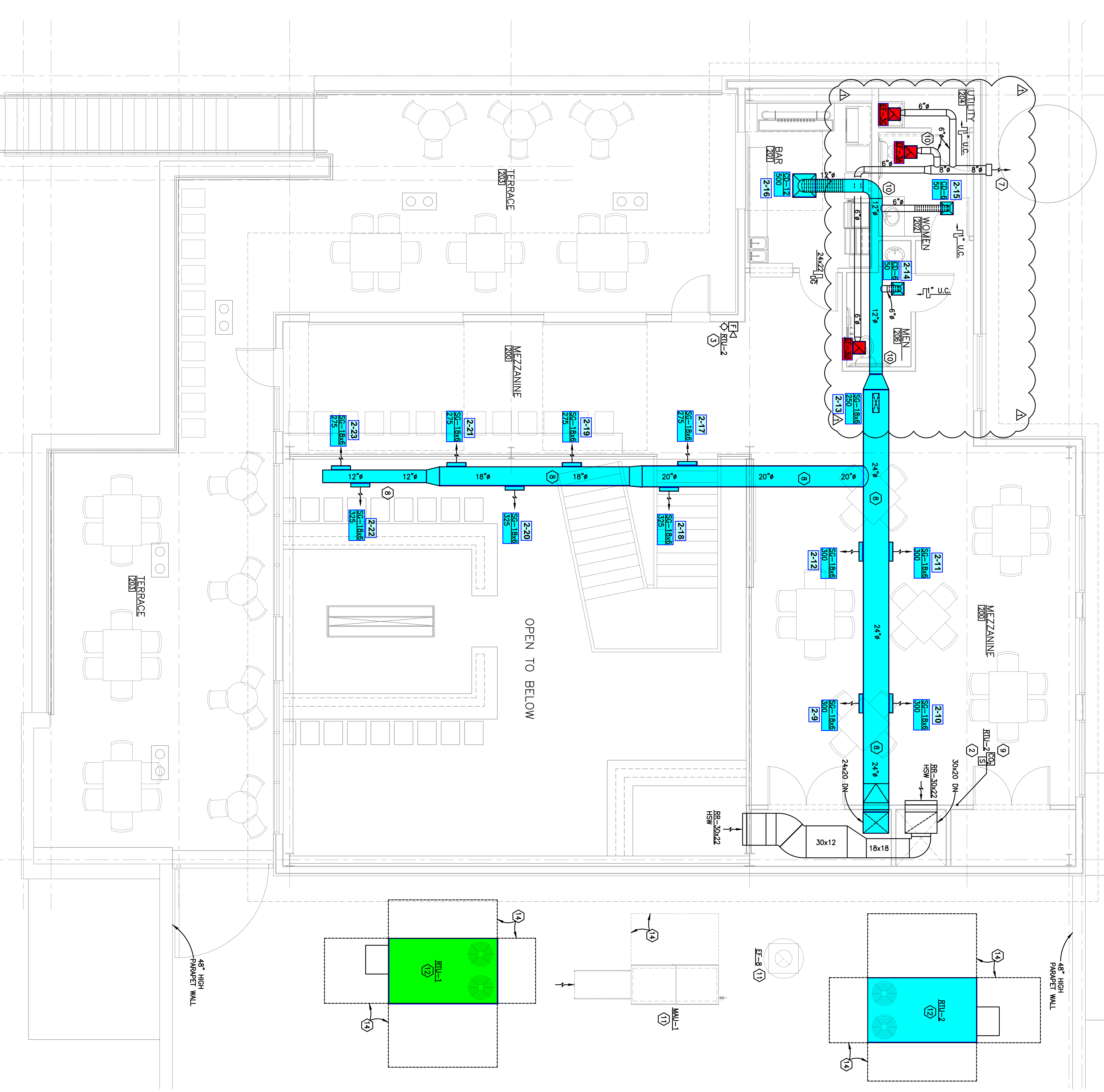


FIRST FLOOR - KEY PLAN
 SCALE: NONE

PROJECT: INTERIOR BUILD OUT FOR: BRAXTON BREWING CO. UNION, KY 41091	REVISIONS: ARCHITECTURAL REVISIONS 04-26-24	HAL-PE ASSOCIATES ENGINEERING SERVICES, INC. 530 W. 9TH ST. NEWPORT, KY 41071 859.431.6083 halpe.com	
SHEET TITLE: HVAC - FIRST FLOOR PLAN AND NOTES	DRN: CHK: CAD REF: CGD SMG 16394H-1	PROJECT NO.: 03-12-24	SHEET NO.: H-1

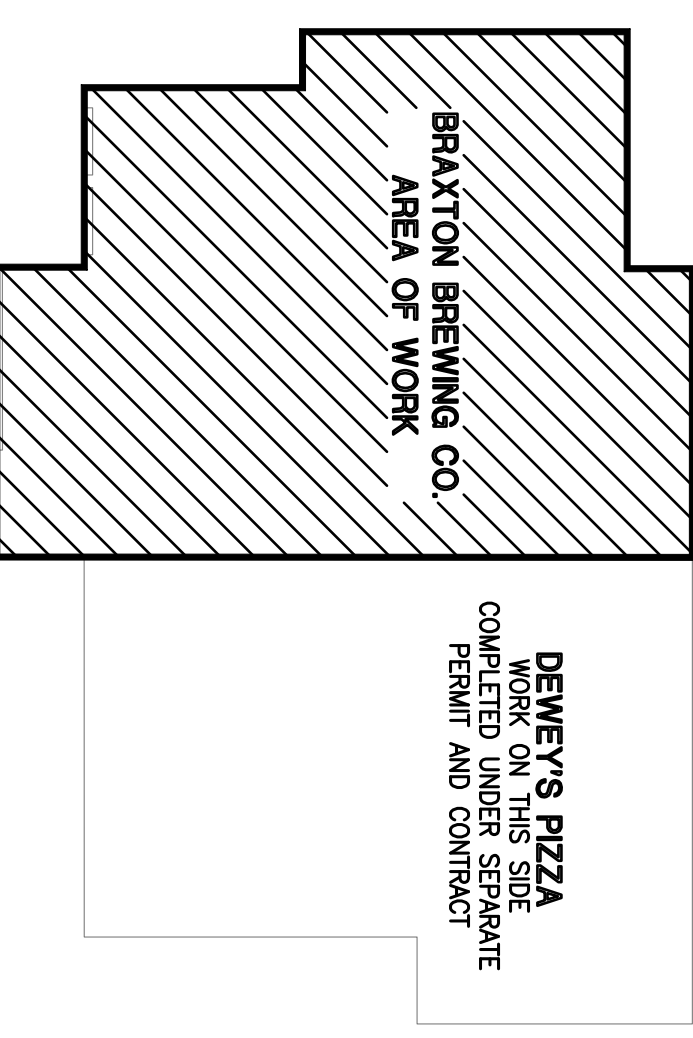
THIS DRAWING AND ITS REPRESENTATIONS ARE THE PROPERTY OF HAL-PE ASSOCIATES AND MAY NOT BE REPRODUCED, PUBLISHED, DISTRIBUTED, OR USED IN ANY MANNER WITHOUT WRITTEN PERMISSION OF HAL-PE ASSOCIATES. ALL RIGHTS RESERVED. COPYRIGHT HAL-PE ASSOCIATES. ALL RIGHTS RESERVED. 2024 ©

NOTE: MAINTAIN 10'-0" HORIZONTAL OR 3'-0" VERTICAL CLEARANCE BETWEEN O.A. MARKS AND CONTAMINANTS IN ACCORDANCE WITH SECTION 901.4.082-ALC. OF THE IBC. SEE CONTRACT DOCUMENTS FOR FURTHER INFORMATION.
SECOND FLOOR PLAN - HVAC
 SCALE: 1/4" = 1'-0"



DRAWING NOTES

- 1 FIELD VERIFY THERMOSTAT LOCATION WITH OWNER BEFORE ROUGH-IN.
- 2 FIELD VERIFY REMOTE TEMPERATURE SENSOR LOCATION WITH OWNER BEFORE ROUGH-IN.
- 3 AUDIBLE / VISUAL SIGNALING DEVICE LOCATED IN A CONSTANTLY ATTENDED LOCATION (FIELD VERIFY LOCATION WITH OWNER BEFORE ROUGH-IN).
- 4 DUCTWORK UP TO ROOFTOP UNIT RTU-1 (SEE SECOND FLOOR PLAN FOR CONTINUATION).
- 5 DUCTWORK UP TO ROOFTOP UNIT RTU-2 (SEE SECOND FLOOR PLAN FOR CONTINUATION).
- 6 8" EXHAUST DUCT THROUGH WALL TO BIRHOODPROOF WALL CAP.
- 7 8" EXHAUST DUCT THROUGH WALL TO BIRHOODPROOF WALL CAP.
- 8 EXPOSED SPRINKLER DUCTWORK (FIELD VERIFY HOISTING HEIGHT WITH ARCHITECT/OWNER BEFORE ROUGH-IN).
- 9 FIELD VERIFY CO2 SENSOR LOCATION WITH OWNER BEFORE ROUGH-IN.
- 10 DUCTWORK LOCATED ABOVE LAY-IN CEILING.
- 11 EQUIPMENT SERVING DEMEY'S PIZZA SIDE (SHOWN FOR REFERENCE). SEE SEPARATE PERMIT DRAWINGS FOR DEMEY'S PIZZA FOR CONTINUATION.
- 12 NEW ROOFTOP UNIT LOCATED ON ROOF (FIELD VERIFY LOCATION WITH OWNER/STRUCTURAL ENGINEER BEFORE ROUGH-IN).
- 13 30x20 RETURN AIR DUCT WITH 90° ELBOW UP AND TERMINATED EXHA WITH ADVISORY SUPPLY DUCT. OPEN ENDED DUCT EXPANDED METAL OVER END AS REQUIRED.
- 14 MANUFACTURER'S REQUIRED SERVICE CLEARANCES.



SECOND FLOOR PLAN - KEY PLAN
 SCALE: NONE

PROJECT: <p style="text-align: center;">INTERIOR BUILD OUT FOR: BRAXTON BREWING CO.</p> <p style="text-align: center;">UNION, KY 41091</p> SHEET TITLE: <p style="text-align: center;">HVAC - SECOND FLOOR PLAN AND NOTES</p>	REVISIONS: ARCHITECTURAL REVISIONS 04-26-24	<p>HAL-PE ASSOCIATES ENGINEERING SERVICES, INC. 530 W. 9TH ST. NEWPORT, KY 41071 859.431.6083 halpe.com</p>	
DRN: CHK: CAD REF: CGD SMG 16394H-1	PROJECT: SHEET NO.: H-2	DATE: 03-12-24 JOB NO. 16394	DEMEY'S PIZZA WORK ON THIS SIDE COMPLETED UNDER SEPARATE PERMIT AND CONTRACT