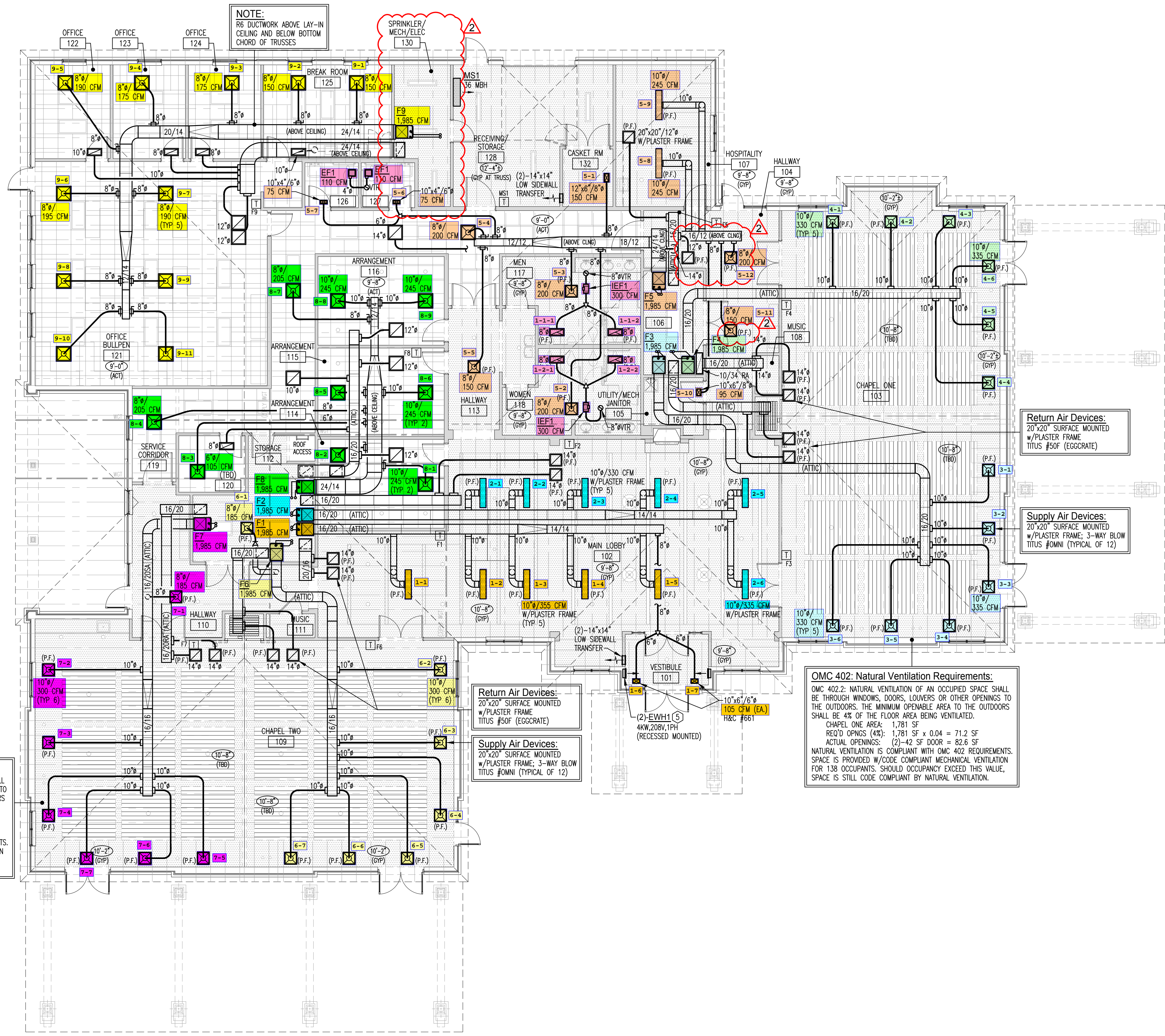


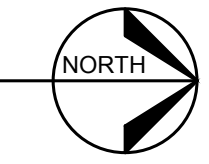
OUTDOOR AIR SCHEDULE

ROOM NUMBER	ROOM NAME	ROOM AREA (SQ. FT.)	NO. OF PEOPLE	ASHRAE 62.1-2019 / 2013 HEALTH CARE GUIDELINE REQ.		AIR DISTRIBUTION				
				EST. MAX OCCUPANCY (P/1000 SQ. FT.)	CA CFM / PERSON	OA CFM - CODE MINIMUM	OA CFM - DESIGN	SUPPLY AIRFLOW (CFM)	RETURN AIRFLOW (CFM)	EXHAUST AIRFLOW (CFM)
F1/AC1 & F2/AC2: MAIN LOBBY										
O/A Damper @ 10%										
101	VESTIBULE	79			.06	5	21	210	210	
102	MAIN LOBBY	1,558	50		.06	344	376	3,760	3,760	
SYSTEM TOTALS =						348	397	3,970	3,970	
SYSTEM SUMMARY:										
CONDITIONED AREA: 1,637 SF		MIN. O/A REQ'D: 348 CFM		MINIMUM COMBINED OUTDOOR AIR RATE PER ASHRAE 62.1-2019, TABLE 6-1, IS 5.0 CFM PER PERSON FOR LOBBIES.						
DESIGN AIRFLOW: 3,970 CFM		DESIGN O/A: 397 CFM								
DESIGN CFM/SF: 2.43 CFM/SF		DESIGN O/A: 8.0 CFM/PERSON								
EST. OCCUPANCY: 50 PEOPLE		DESIGN O/A: 0.24 CFM/SF								
F3/AC3 & F4/AC4: CHAPEL ONE										
O/A Damper @ 21%										
103	CHAPEL ONE	1,781	138		.06	797	834	3,970	3,970	
(MAX. OCC IS 189-OMC 402.2 NAT. VENT. IS CODE COMPLIANT)										
SYSTEM TOTALS =						797	834	3,970	3,970	
SYSTEM SUMMARY:										
CONDITIONED AREA: 1,781 SF		MIN. O/A REQ'D: 797 CFM		MINIMUM COMBINED OUTDOOR AIR RATE PER ASHRAE 62.1-2019, TABLE 6-1, IS 6.0 CFM PER PERSON FOR PLACES OF RELIGIOUS WORSHIP.						
DESIGN AIRFLOW: 3,970 CFM		DESIGN O/A: 834 CFM								
DESIGN CFM/SF: 2.23 CFM/SF		DESIGN O/A: 6.0 CFM/PERSON								
EST. OCCUPANCY: 138 PEOPLE		DESIGN O/A: 0.47 CFM/SF								
F5/AC5										
O/A Damper @ 17.55%										
104	HALLWAY	336			.06	20	61	350	350	
105	UTILITY/MECH/JANITOR	57			.12	7	17	95	95	
107	HOSPITALITY	253	10		.12	80	86	490	490	
113	HALLWAY	175			.06	10	26	150	150	
117	MEN'S RESTROOM	200	4		.06	30	200	300	300	
118	WOMEN'S RESTROOM	200	4		.06	30	200	300	300	
119	SERVICE CORRIDOR	331			.06	20	35	200	200	
126	TOILET	45	1		.06	13	75	110	110	
127	TOILET	45	1		.06	13	75	110	110	
132	CASKET ROOM	54			.12	6	26	150	150	
SYSTEM TOTALS =						144	347	1,985	1,435	820
SYSTEM SUMMARY:										
CONDITIONED AREA: 1,696 SF		MIN. O/A REQ'D: 144 CFM		MINIMUM COMBINED OUTDOOR AIR RATE PER ASHRAE 62.1-2019, TABLE 6-1, IS 6.0 CFM PER PERSON FOR PLACES OF RELIGIOUS WORSHIP.						
DESIGN AIRFLOW: 1,985 CFM		DESIGN O/A: 347 CFM								
DESIGN CFM/SF: 1.17 CFM/SF		DESIGN O/A: 34.7 CFM/PERSON								
EST. OCCUPANCY: 10 PEOPLE		DESIGN O/A: 0.20 CFM/SF								
F6/AC6 & F7/AC7: CHAPEL TWO										
O/A Damper @ 23%										
109	CHAPEL TWO	1,824	152		.06	869	828	3,600	3,600	
(MAX. OCC IS 96 FOR CATERED GATHERING-OMC 402.2 NAT. VENT. IS CODE COMPLIANT)										
110	HALLWAY	290			.06	17	43	185	185	
112	STORAGE	228			.12	27	43	185	185	
SYSTEM TOTALS =						914	913	3,970	3,970	
SYSTEM SUMMARY:										
CONDITIONED AREA: 2,342 SF		MIN. O/A REQ'D: 914 CFM		MINIMUM COMBINED OUTDOOR AIR RATE PER ASHRAE 62.1-2019, TABLE 6-1, IS 6.0 CFM PER PERSON FOR PLACES OF RELIGIOUS WORSHIP.						
DESIGN AIRFLOW: 3,970 CFM		DESIGN O/A: 913 CFM								
DESIGN CFM/SF: 1.70 CFM/SF		DESIGN O/A: 6.0 CFM/PERSON								
EST. OCCUPANCY: 152 PEOPLE		DESIGN O/A: 0.39 CFM/SF								
F8/AC8										
O/A Damper @ 12.5%										
114	ARRANGEMENT	212	8		.06	53	61	490	490	
115	ARRANGEMENT	212	8		.06	53	61	490	490	
116	ARRANGEMENT	212	8		.06	53	61	490	490	
119	SERVICE CORRIDOR	320			.06	19	51	410	410	
120	TBD	70			.12	8	13	105	105	
SYSTEM TOTALS =						186	248	1,985	1,985	
SYSTEM SUMMARY:										
CONDITIONED AREA: 1,027 SF		MIN. O/A REQ'D: 186 CFM		MINIMUM COMBINED OUTDOOR AIR RATE PER ASHRAE 62.1-2019, TABLE 6-1, IS 6.0 CFM PER PERSON FOR MEETING SPACES.						
DESIGN AIRFLOW: 1,985 CFM		DESIGN O/A: 248 CFM								
DESIGN CFM/SF: 1.93 CFM/SF		DESIGN O/A: 6.0 CFM/PERSON								
EST. OCCUPANCY: 24 PEOPLE		DESIGN O/A: 0.24 CFM/SF								
F9/AC9: OFFICES										
O/A Damper @ 20%										
121	OFFICE BULLPEN	1,014	4		.06	81	229	1,145	1,145	
122	OFFICE	132	1		.06	13	38	190	190	
123	OFFICE	127	1		.06	13	35	175	175	
124	OFFICE	127	1		.06	13	35	175	175	
125	BREAK ROOM	225	6		.12	57	60	300	300	
SYSTEM TOTALS =						176	397	1,985	1,985	
SYSTEM SUMMARY:										
CONDITIONED AREA: 1,625 SF		MIN. O/A REQ'D: 176 CFM		MINIMUM COMBINED OUTDOOR AIR RATE PER ASHRAE 62.1-2019, TABLE 6-1, IS 17.0 CFM PER PERSON FOR OFFICES.						
DESIGN AIRFLOW: 1,985 CFM		DESIGN O/A: 397 CFM								
DESIGN CFM/SF: 1.22 CFM/SF		DESIGN O/A: 30.5 CFM/PERSON								
EST. OCCUPANCY: 13 PEOPLE		DESIGN O/A: 0.24 CFM/SF								

OMC 402: Natural Ventilation Requirements:
 OMC 402.2: NATURAL VENTILATION OF AN OCCUPIED SPACE SHALL BE THROUGH WINDOWS, DOORS, LOUVERS OR OTHER OPENINGS TO THE OUTDOORS. THE MINIMUM OPENABLE AREA TO THE OUTDOORS SHALL BE 4% OF THE FLOOR AREA BEING VENTILATED.
 CHAPEL TWO AREA: 1,824 SF
 REQ'D OPNGS (4%): 1,824 SF x 0.04 = 73.0 SF
 ACTUAL OPENINGS: (5)-21 SF DOOR = 105.0 SF
 NATURAL VENTILATION IS COMPLIANT WITH OMC 402 REQUIREMENTS. SPACE IS PROVIDED W/CODE COMPLIANT MECHANICAL VENTILATION FOR 152 OCCUPANTS. SHOULD OCCUPANCY EXCEED THIS VALUE, SPACE IS STILL CODE COMPLIANT BY NATURAL VENTILATION.



MECHANICAL PLAN
 SCALE: 1/8"=1'-0"



DEIMER
 MECHANICAL SERVICES
 9181 N. Dixie Dr., Dayton, OH 45414
 T: (937) 709-3877

SEAL:
 Theresa A. Root
 Professional Engineer
 License No. E88169, Exp. Date 12-31-25

DATE	NO.	REVISIONS
1-21-25		ISSUED FOR PERMIT
4-2-25		PLAN REVIEW CLARIFICATIONS
4-22-25		PLAN REVISIONS

General Contractor:

 1741 Thomas Paine Parkway
 Centerville, OH 45459
 T: (937) 439-2728
 www.DrydenBuilders.com

Proposed HVAC for
Tobias Funeral Home
New Far Hills Chapel
 5471 Far Hills Ave.
 Dayton, OH 45429

Project No.:	131609195
Date:	1-21-25 (Prelim)
Scale:	AS NOTED
Sheet Title:	MECHANICAL PLAN & DETAILS
Sheet No.:	

M2