

DOAS/RTU FAN SCHEDULE - JOB#4733183

FAN UNIT NO	TAG	QTY	DOAS/RTU MODEL #	MANUFACTURER	BLOWER	RETURN AIR CFM	MAX OUTSIDE AIR CFM	TOTAL CFM	ESP	HP	BHP	Ø	VOLT	MCA	MCCP	WEIGHT (LBS)
1	DOAS-1	1	CASRTU4-I.600-30-25T-DOAS	CAPTIVEAIRE	30P-4	57	5643	5700	0.500	7.500	2.7510	3	208	127.5A	150A	4647

DOAS/RTU COOLING SCHEDULE

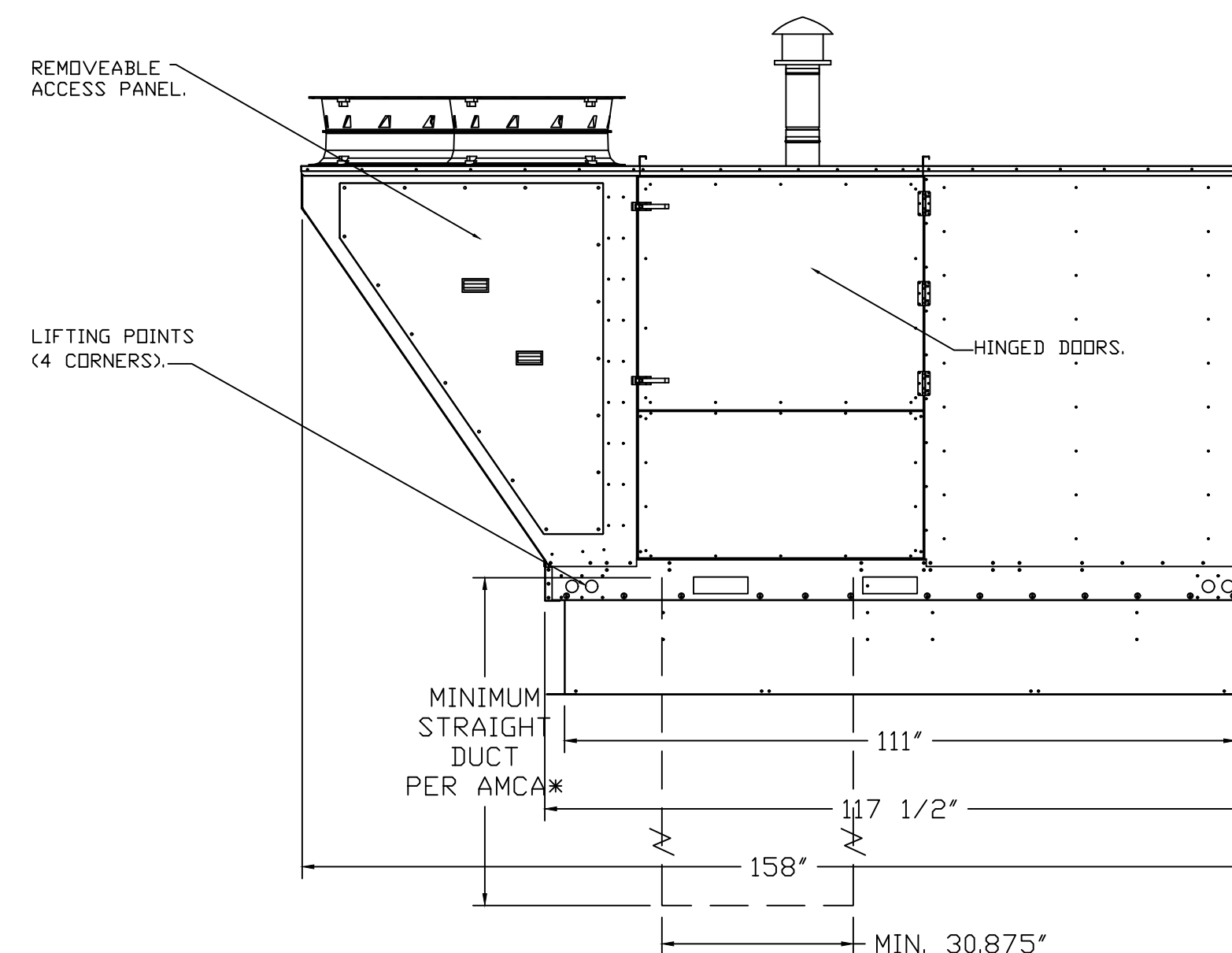
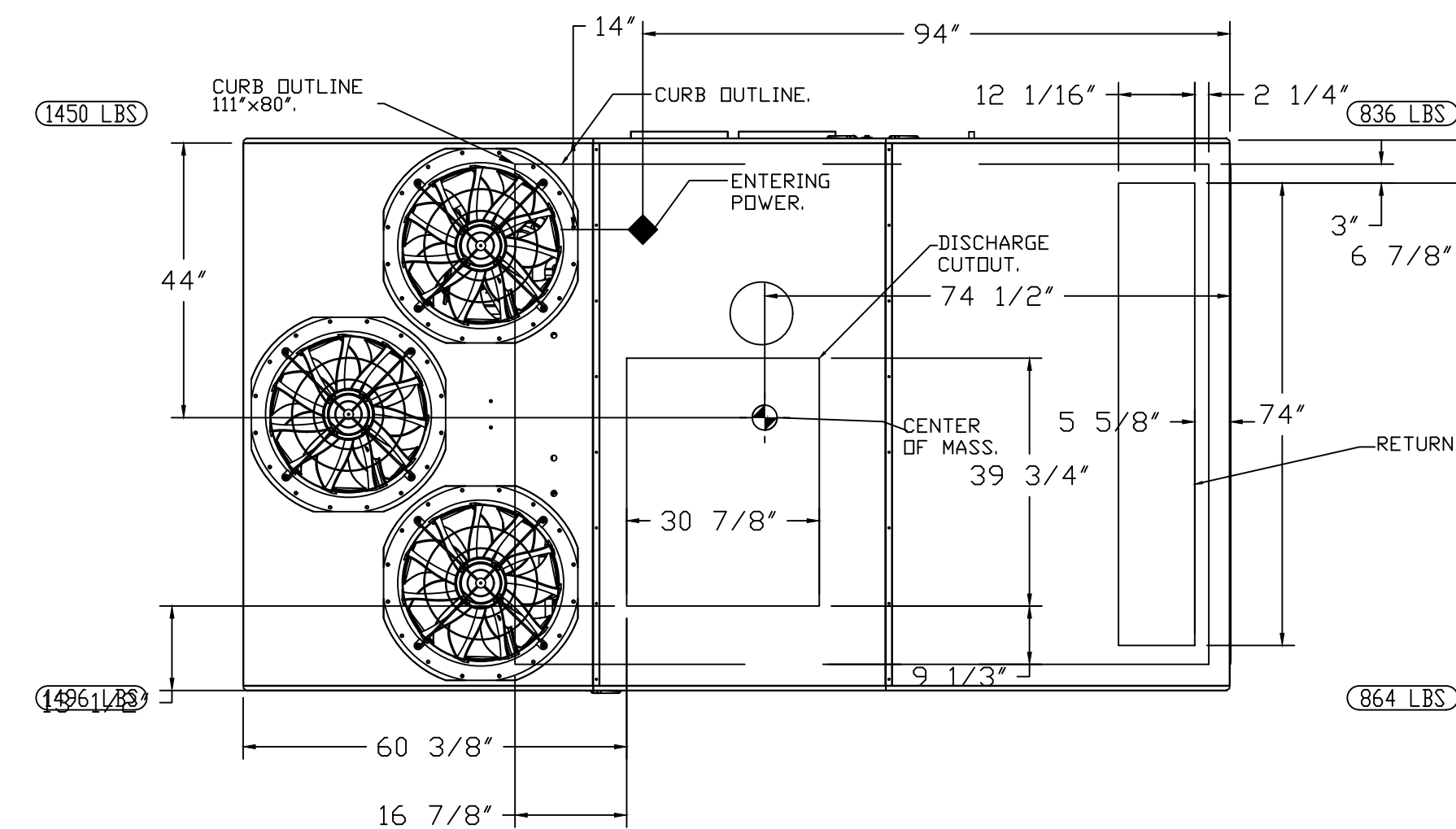
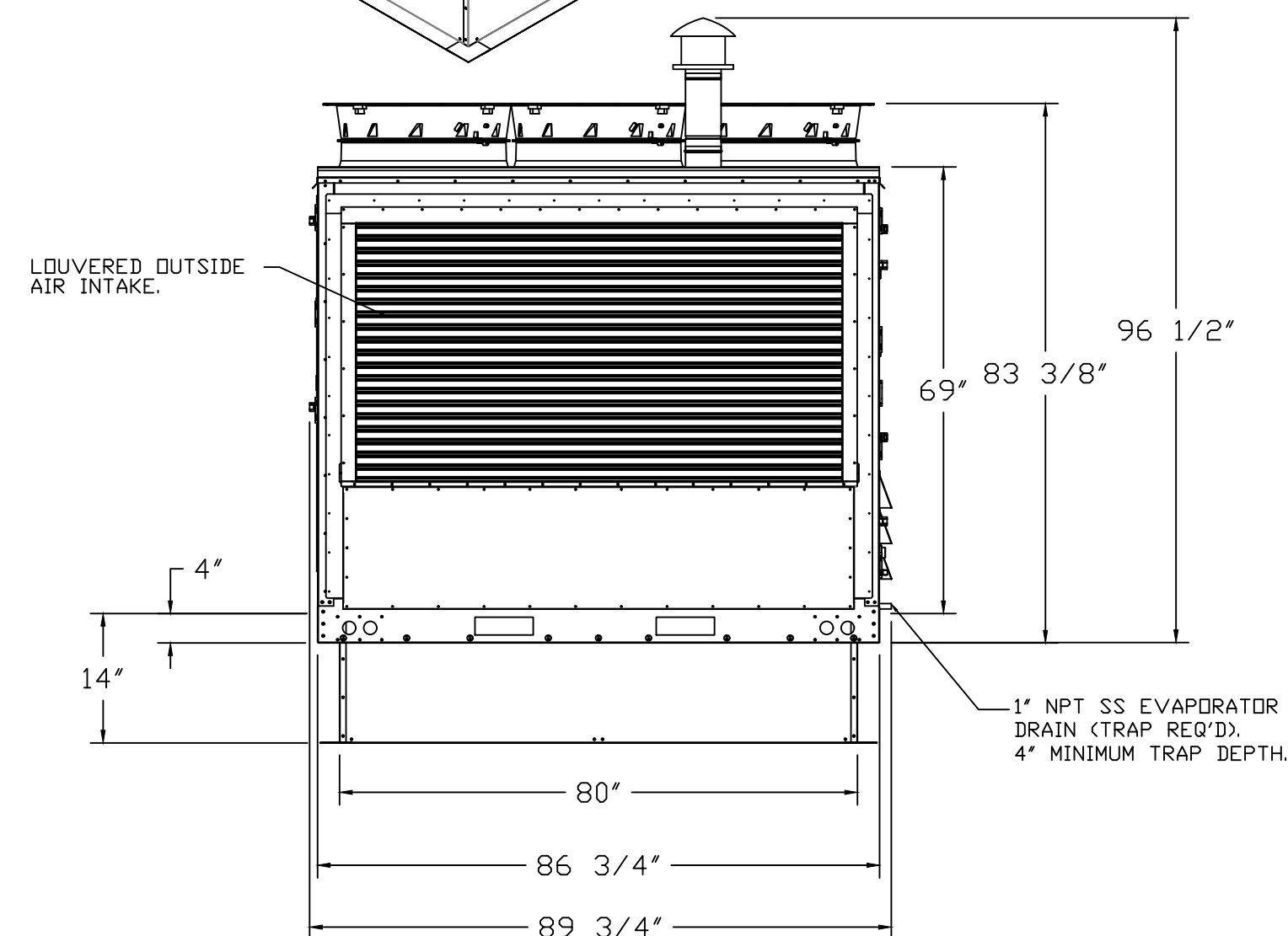
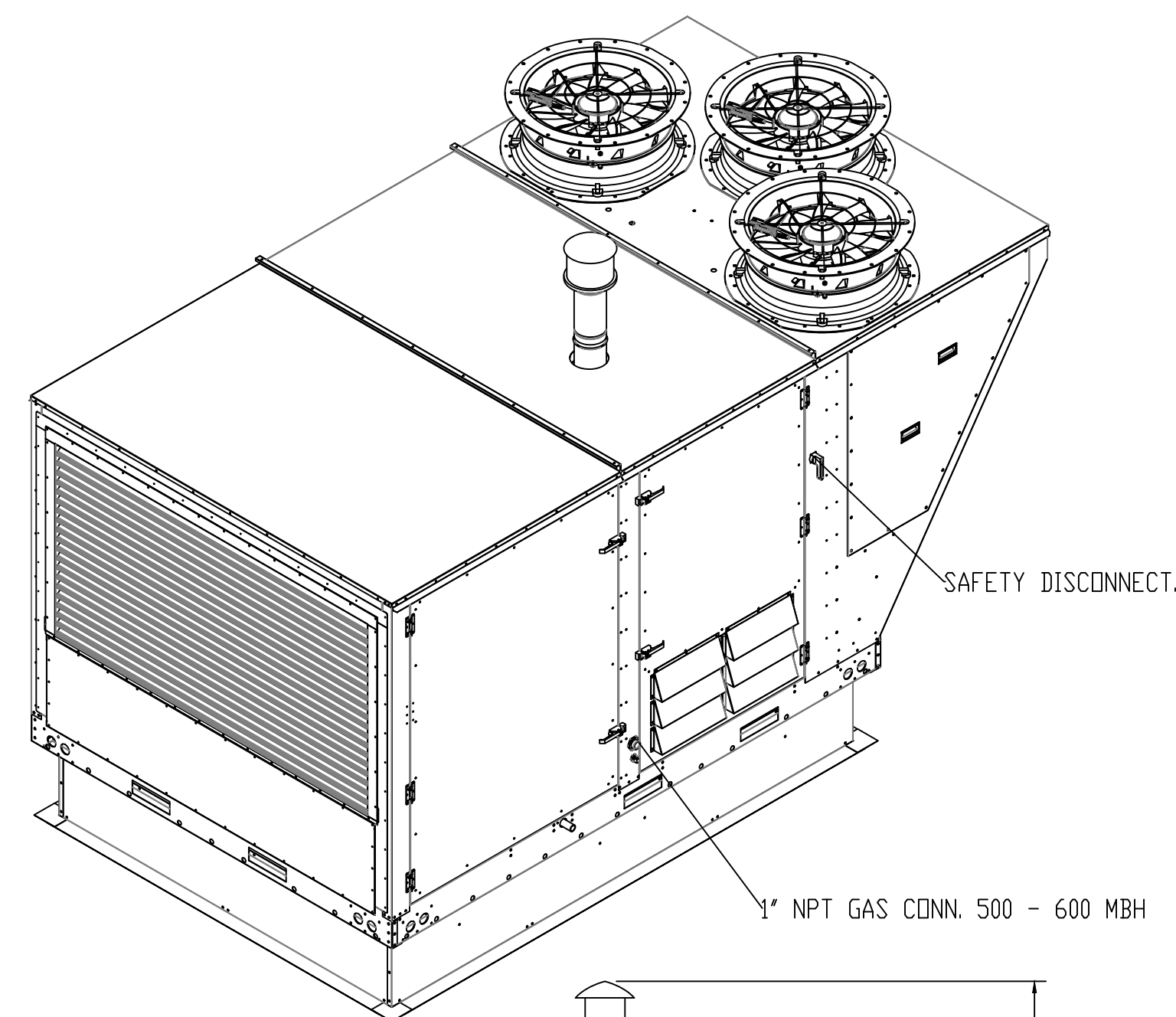
FAN UNIT NO	TAG	COMPRESSOR			OUTDOOR FAN				INDOOR COIL		OUTSIDE AIR DB TEMP	OUTSIDE AIR WB TEMP	MIXED AIR DB TEMP	MIXED AIR WB TEMP	LEAVING DB TEMP	LEAVING WB TEMP	LEAVING DP TEMP	TOTAL CAPACITY	SENSIBLE CAPACITY	LATENT CAPACITY	REHEAT LEAVING DB TEMP	REHEAT LEAVING WB TEMP	DESIRED REHEAT CAPACITY	MAX REHEAT CAPACITY	REHEAT LEAVING RELATIVE HUMIDITY	MOISTURE REMOVAL RATE	IEER
		TONNAGE	VOLTAGE	Ø	MOTOR VOLTAGE	MOTOR Ø	MOTOR FREQUENCY	MOTOR QTY	ROWS	FACE AREA																	
1	DOAS-1	25	190-240	3	200-240	3	60	3	6	25.3 SQFT	90.0°F	74.0°F	89.9°F	73.9°F	56.2°F	55.5°F	55.1°F	336.0 MBH	197.6 MBH	138.4 MBH	70.0°F	60.7°F	85.8 MBH	260 MBH	59	125.7 LBS/HR	17.9

DOAS/RTU HEATING SCHEDULE

FAN UNIT NO	TAG	INPUT BTUs	OUTPUT BTUs	TEMP RISE	REQUIRED INPUT GAS PRESSURE	GAS TYPE	BURNER EFFICIENCY(%)
1	DOAS-1	591812	473450	70°F	7 IN. W.C. - 14 IN. W.C.	NATURAL	80

CURB ASSEMBLIES

NO	DN FAN	TAG	WEIGHT	ITEM	SIZE
1	# 1	DOAS-1	175 LBS	CURB	80.000"W X 111.000"L X 14.000"H INSULATED 16 GAUGE.



*NOTE: SUPPLY DUCT MUST BE INSTALLED TO MEET SMACNA STANDARDS. A MINIMUM STRAIGHT DUCT LENGTH MUST BE MAINTAINED DOWNSTREAM OF UNIT DISCHARGE AS OUTLINED IN AMCA PUBLICATION 201. WHEN USING RECTANGULAR DUCTWORK, ELBOWS MUST BE RADIUS THROAT, RADIUS BACK WITH TURNING VANES. FLEXIBLE DUCTWORK AND SQUARE THROAT/SQUARE BACK ELBOWS SHOULD NOT BE USED. ANY TRANSITION AND/OR TURNS IN THE DUCTWORK WILL CAUSE SYSTEM EFFECT. SYSTEM EFFECT WILL DRASTICALLY INCREASE STATIC PRESSURE AND REDUCE AIRFLOW. DO NOT RELY ON UNIT TO SUPPORT DUCT IN ANY WAY. FAILURE TO PROPERLY SIZE DUCTWORK MAY CAUSE SYSTEM EFFECTS AND REDUCE PERFORMANCE OF THE EQUIPMENT. SUGGESTED STRAIGHT DUCT SIZE IS 30.875" x 39.75".

FAN #1 CASRTU4-I.600-30-25T-DOAS - HEATER (DOAS-1)

NOTES:

- DO NOT OBSTRUCT OUTSIDE AIR INLET, OUTSIDE AIR COIL OR OUTSIDE AIR FAN.
- Ø DENOTES CORNER WEIGHT.
- ROOF OPENING MUST BE 2" SMALLER THAN CURB DIMENSIONS IN BOTH DIRECTIONS.

OPTIONS

- SINGLE POINT ELECTRICAL CONNECTION FOR RTU. QNTY 1 750VA TRANSFORMER USED. IF A NON-DCV PREWIRE CONTROLS THIS UNIT, THE #28, #47, "MA", OR "E2" OPTION PREWIRE MUST BE SELECTED. DO NOT PROVIDE SUPPLY STARTER IN PREWIRE.
- CASLINK BUILDING MONITORING SYSTEM - INTERNET OR CELLULAR CONNECTION REQUIRED.
- RTU SIZE 4 DOWN DISCHARGE.
- 2" MERV 13 FILTERS FOR SIZE 4 RTU. QTY 12.
- 2" MERV 8 FILTERS FOR SIZE 4 RTU. QTY 12.
- OVERHEAT STAT.
- TOTAL CFM MONITORING FOR DOAS.
- VFD FACTORY MOUNTED AND WIRED IN COMMERCIAL CONTROL VESTIBULE FOR RTU.
- MANIFOLD PRESSURE GAUGE, 0 TO 10" WC, 1 FURNACE.
- INLET PRESSURE GAUGE, 0-35".
- SIZE 4 RTU CURB DUCT HANGER.
- OCCUPIED SCHEDULING.
- CLOGGED FILTER SWITCH WITH NOTIFICATION ON HMI.
- RTU 4 HAIL GUARD.
- 25 TON MODULATING COOLING OPTION, 208/230V. R410A REFRIGERANT, VARIABLE SPEED COMPRESSOR, ECM CONDENSING FAN(S).
- 25 TON MODULATING REHEAT OPTION. SPACE DEWPOINT CONTROL.
- RTU VZH170 FACTORY INSTALLED COMPRESSOR SOUND BLANKET 230V.
- RTU SIZE 4 DOWN RETURN.
- RTU STATIC PRESSURE INTAKE/RETURN DAMPER CONTROL - MUA BOARD.
- VAV PACKAGE W/ MANUAL/DDC CONTROL (571 VFD INCLUDED).
- LINE REACTOR MOUNTED IN FAN.
- RETURN MOUNTED SMOKE DETECTOR FOR RTU. COMPLETE WITH DETECTOR AND SAMPLING TUBE. FACTORY INSTALLED.

REVISIONS

DESCRIPTION	DATE

CAPTIVEAIRE
Air Solutions
www.captiveaire.com
1329 East Kemper Rd., Ste. 4210, Cincinnati, OH, 45246 PHONE: (513) 860-5555 EMAIL: reg12@captivair.com

Wright Dunbar FoodHall Rv2 DOAS
1100 W Third St,
Dayton, OH, 45402

DATE: 2/10/2021
DWG.#: 4733183
DRAWN BY: jcirilli
SCALE: 3/4" = 1'-0"
MASTER DRAWING

SHEET NO. 1

