

FAN UNIT NO.	TAG	QTY	FAN UNIT MODEL #	MANUFACTURER	CFM	ESP	HP	MOTOR ENCL.	HP	BHP	PHASE	VOLT.	FLA	DISCHARGE VELOCITY	WEIGHT LBS.	SDNES
2	EF-3 (SCULLERY)	1	DD08FA	CAPTIVEAIRE	500	0.500	1157	TEFC	0.250	0.2710	1	115	3.0	848 FPM	73	6.4
3	EF-5 (DPL RRD)	1	DD08FA	CAPTIVEAIRE	150	0.250	1079	ODP	0.060	0.0250	1	115	1.1		57	2.2
4	EF-6 (CUST RRD)	1	DD08FA	CAPTIVEAIRE	150	0.250	1079	ODP	0.060	0.0250	1	115	1.1		57	2.2

FAN UNIT NO.	TAG	QTY	DDAS/RTU MODEL #	MANUFACTURER	RETURN AIR CFM	MAX. OUTSIDE AIR CFM	TOTAL CFM	ESP	HP	PHASE	VOLT.	HCA	HDCP	OUTSIDE AIR DB WB DB WB DB WB	LEAVING AIR DB WB DB WB DB WB	CAPACITY TON	SENC.	DISCHARGE DB WB DB WB DB WB	REHEAT CAPACITY TON	MOISTURE RECOVERY RATE	GAS TYPE	INPUT BTU/H	OUTPUT BTU/H	TEMP. RISE	REQUIRED INPUT GAS PRESSURE	NOTES					
1	DDAS-1	1	CASRTU3-1250-20-20T	CAPTIVEAIRE	20P-3	0	3300	3300	2569	3.00	3	460	40A	43A	RE-47 77.47 56.17 53.07 50.77	26.43	MMB126.5	MMB182.6	6.0	70.07	64.37	5LE	MMB126.6	MMB126.4	LBS/HR	NATURAL	184581	149501	40°F	7 IN. W.C. - 14 IN. W.C.	1,2,3,4,5,6,7,8,9,10,11,12,13,14,15,16,17,18

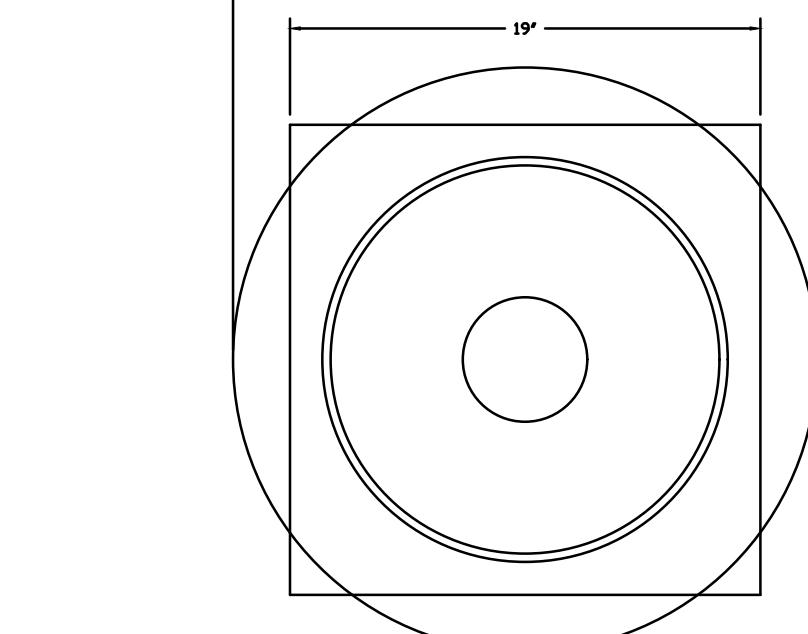
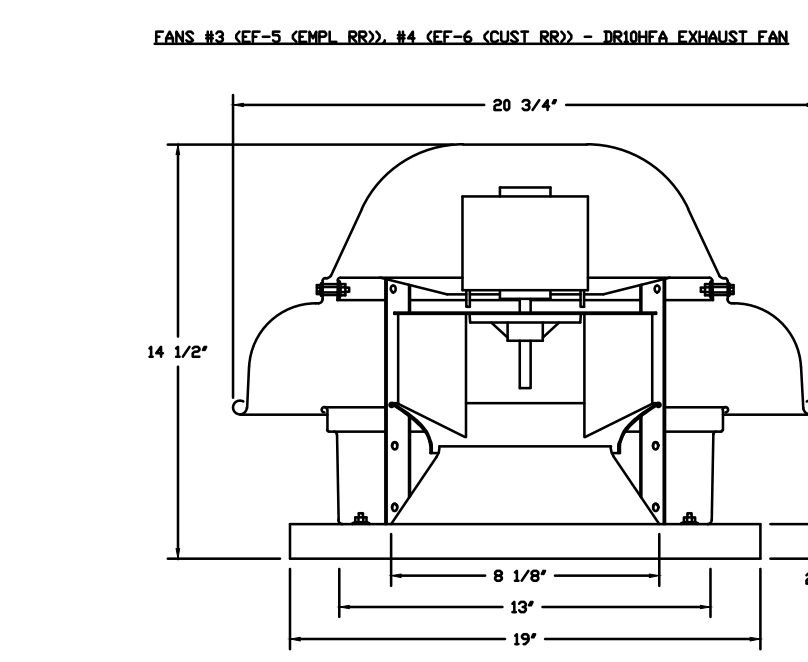
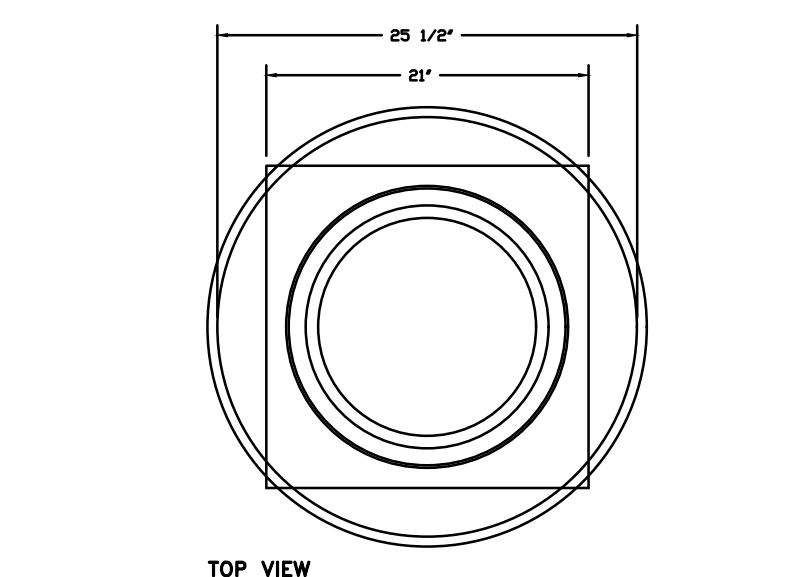
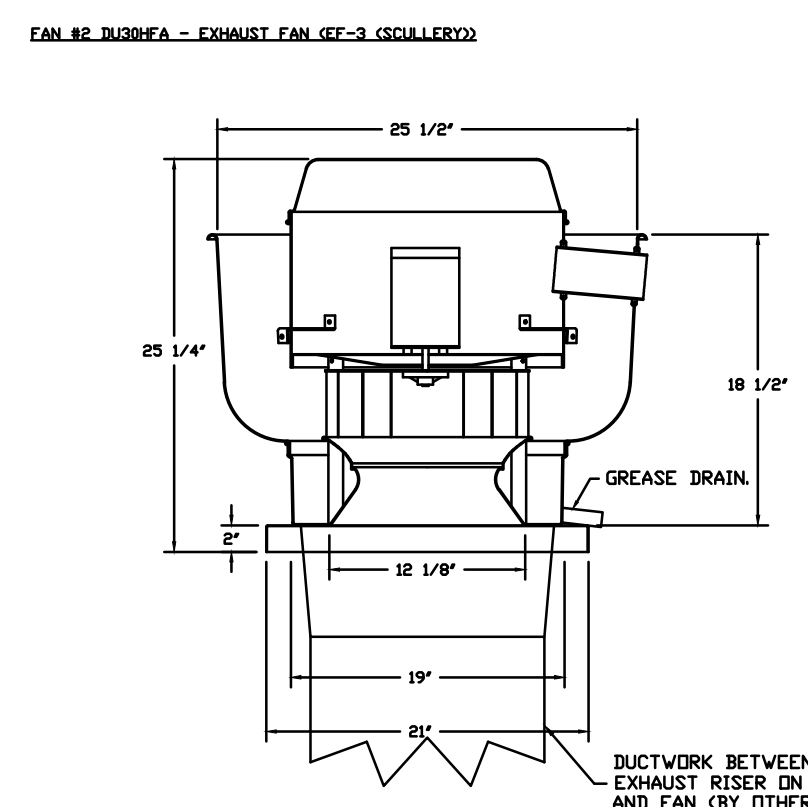
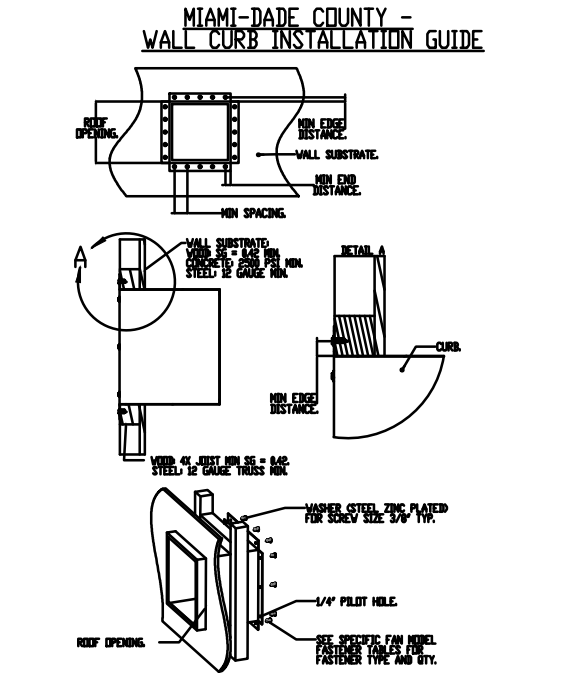
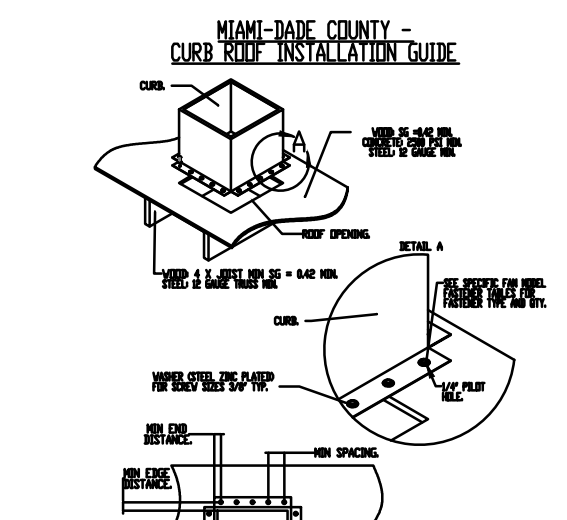
NOTES:

- INVERTER SCROLL COMPRESSOR WITH INTEGRATED OIL SENSOR. DIGITAL OR STAGED SCROLL NOT AN APPROVED EQUAL.
- DIRECT DRIVE PLUMB BLOWERS BELT DRIVEN AND ARE NOT ACCEPTABLE.
- INTEGRATED MONITORING VIA CELLULAR CONNECTION BY MANUFACTURER.
- REFRIGERANT PRESSURE MONITORING IN HIGH AND LOW PRESSURE SIDE OF SYSTEM INCLUDED THROUGH DIGITAL INTERFACE.
- EC MOTOR CONDENSING FAN.
- ELECTRONIC EXPANSION VALVE. TXV NOT ACCEPTABLE.
- SUCTION LINE ACCUMULATOR.
- FACTORY COMMISSIONING WITH 5 YEAR PARTS WARRANTY, 25 YEAR WARRANTY ON STAINLESS STEEL HEAT EXCHANGER.
- AVERAGING INTAKE, CVAP AND DISCHARGE TEMPERATURE SENSORS (DISCHARGE SENSOR TO BE FACTORY MOUNTED WITHIN UNIT).
- EXTERIOR PLUMB WALL CONNECTION W/ 4" INSULATED HANGING FROM EXTERIOR W/ 1/2" DIA. BASE.
- 100% EFFICIENCY TUNING WITH INSULATING INDEX TO MAINTAIN CONSTANT CONSTRUCTION EFFICIENCY. ADDRESS FIRING RANGE: 64 TURNDOWN WITH HG AND 51 TURNDOWN WITH LP.
- SUPPLY CFM MONITORING INTEGRAL TO UNIT WITH CFM MEASUREMENT INCLUDED THROUGH DIGITAL INTERFACE.
- FULL HEATING THE HOT GAS REHEAT.
- E-COATED CONDENSING COIL.
- E-COATED COMPRESSOR COIL.
- E-COATED REHEAT COIL.
- MAIL GUARD FOR CONDENSING COIL.

FAN UNIT NO.	TAG	QTY	DESCRIPTION
1	DDAS-1	1	INLET PRESSURE GAUGE, 0-30"
		1	MANIFOLD PRESSURE GAUGE, 0 TO 10" W.C. 1 FURNACE
		1	RTU TOTAL CFM MONITORING
		1	SHIP LOOSE GAS STRAINER 1"
		1	SINGLE POINT ELECTRICAL CONNECTION FOR RTU 750VA TRANSFORMER USED IF A NON-DCV PRESSURE CONTROLS THIS UNIT. THE 800, 947, 949 OR 922 PREVARE OPTION MUST BE SELECTED. DOES NOT PROVIDE SUPPLY STARTER IN PREVARE.
		1	CASLINE BUILDING MONITORING SYSTEM - INTERNET OR CELLULAR CONNECTION REQUIRED
		1	RTU3 DOWN DISCHARGE
		1	1" NERV 13 FILTERS FOR RTU3 (QTY. 4)
		1	1" NERV 8 FILTERS FOR RTU3 (QTY. 4)
		1	DOVERHEAT STAT
		1	VFD FACTORY MOUNTED AND WIRED IN RTU COMMERCIAL CONTROL VESTIBLE
		1	10 TON INSULATING COILING OPTION, 465/480V. R410A REFRIGERANT, VARIABLE SPEED COMPRESSOR, ECM CONDENSING FANS
		1	10 TON INSULATING REHEAT OPTION - SPACE SEWPOINT CONTROL
		1	RTU3 FIED 100% ON INTAKE CONTROL
		1	RTU3 NO RETURN - 100% DA
		1	REMOTE TEMPERATURE AND HUMIDITY SPACE SENSOR
		1	REHEAT FOR RTU3 DOT CONDENSER COIL
1	COATING FOR RTU3 DOT EVAP COIL		
1	COATING FOR RTU3 DOT REHEAT COIL		
1	RTU3 MAIL GUARD		
1	VAVY PACKAGE W/ MANUAL/BOC CONTROL (57) VFD INCLUDED		
1	LOAD REACTOR MOUNTED IN FAN		
1	5 YEAR ENTIRE UNIT PARTS WARRANTY; 10 YEAR ENTIRE UNIT PARTS WARRANTY WITH REMOTE MONITORING AND CAPTIVEAIRE SERVICE CONTRACT; 25 YEAR STAINLESS STEEL FURNACE PARTS WARRANTY (SEE ADDITIONAL DETAILS)		
2	EF-3 (SCULLERY)	1	GREASE BOX
		1	MIAMI DADE CERTIFICATION - NDA-1 ALUMINUM UPBLAST
		1	10 YEAR PARTS WARRANTY
		1	10 YEAR PARTS WARRANTY
3	EF-5 (DPL RRD)	1	MIAMI DADE CERTIFICATION - NDA-1 ALUMINUM DOWNBLAST 9
		1	MOTORIZED 1" IS 800 180/240V
		1	10 YEAR PARTS WARRANTY
		1	10 YEAR PARTS WARRANTY
4	EF-6 (CUST RRD)	1	MIAMI DADE CERTIFICATION - NDA-1 ALUMINUM DOWNBLAST 9
		1	MOTORIZED 1" IS 800 180/240V
		1	10 YEAR PARTS WARRANTY
		1	10 YEAR PARTS WARRANTY

FAN UNIT NO.	TAG	EXHAUST	SUPPLY
2	EF-3 (SCULLERY)	YES	
3	EF-5 (DPL RRD)		
4	EF-6 (CUST RRD)		

NO.	ON FAN	WEIGHT	ITEM	SIZE
1	1	104 LBS	CURB	59.500" W X 91.000" X 14.000" INSULATED.
2	2	38 LBS	CURB	19.500" W X 19.500" X 26.000" VENTED HINGED.
3	1	82 LBS	CURB	17.500" W X 17.500" X 18.000"
4	1	82 LBS	CURB	17.500" W X 17.500" X 18.000"



FEATURES:

- DIRECT DRIVE CONSTRUCTION AND BELTS/PULLEYS
- ROOF MOUNTED FAN
- RESTAURANT MODEL
- 10 TON AND 10 TON HANG BLOC-54MS
- VARIABLE SPEED CONTROL
- INTERNAL WIRING
- THERMAL OVERLOAD PROTECTION (SINGLE PHASE)
- HIGH HEAT OPERATION SHIP (50°F)
- GREASE CLASSIFICATION TESTING
- NEMA 3R SAFETY DISCONNECT SWITCH

ABNORMAL FLAG-UP TEST:
 CURB FAN MUST OPERATE CONTINUOUSLY WHILE EMITTING BURNING GREASE VAPORS AT 600°F CHIMNEY FOR A PERIOD OF 15 MINUTES WITHOUT THE FAN RECORDING A CHANGE TO ANY EXTENT THAT COULD CAUSE AN UNSAFE CONDITION.

DEFINITIONS:

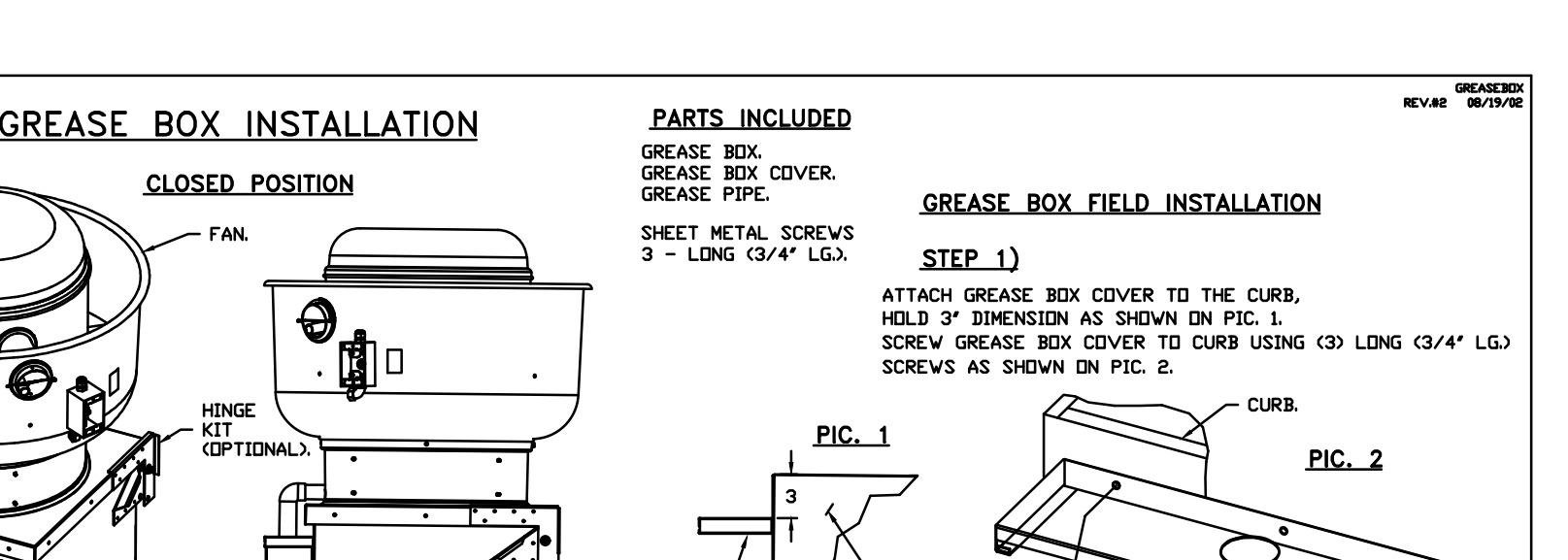
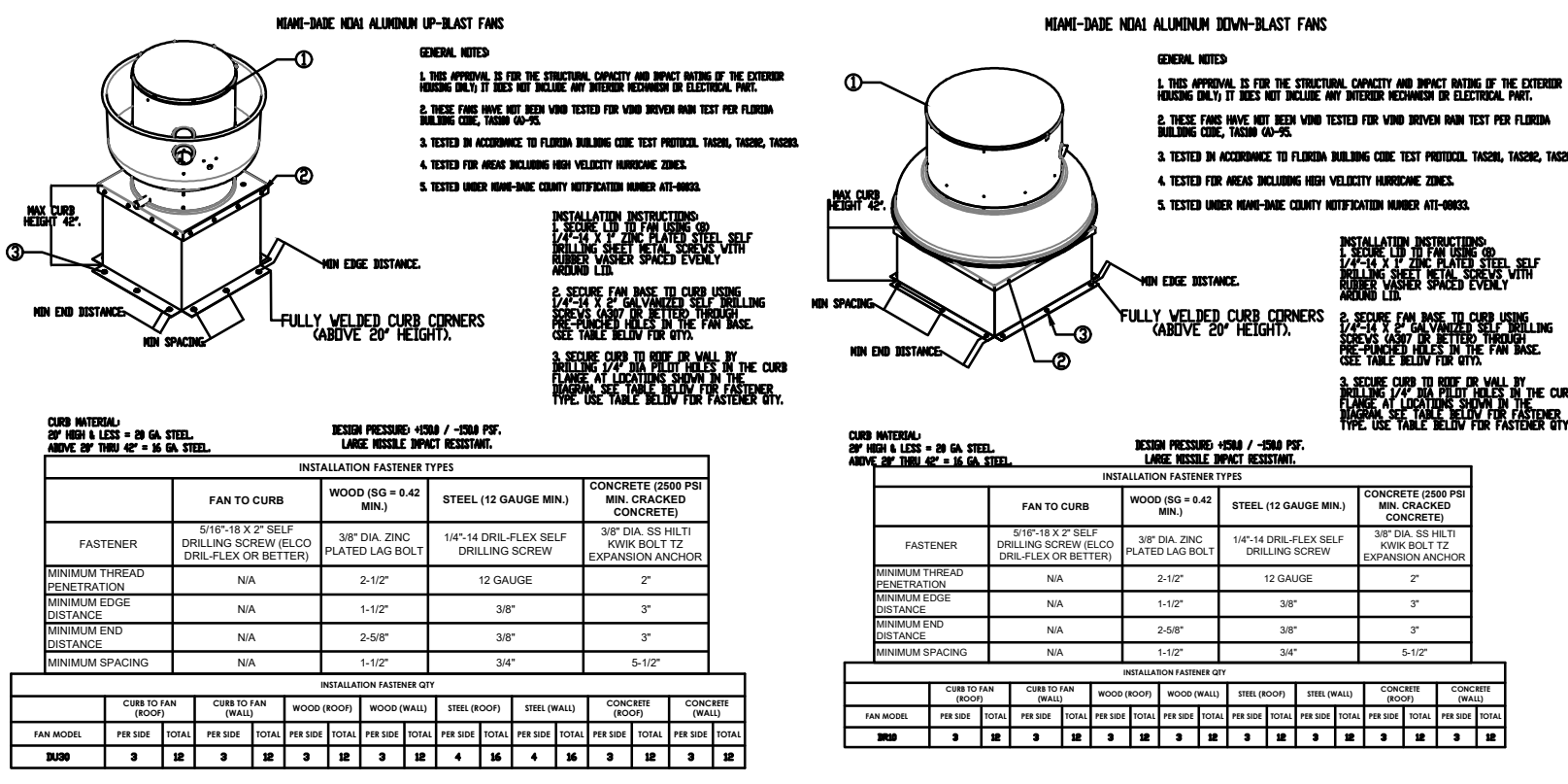
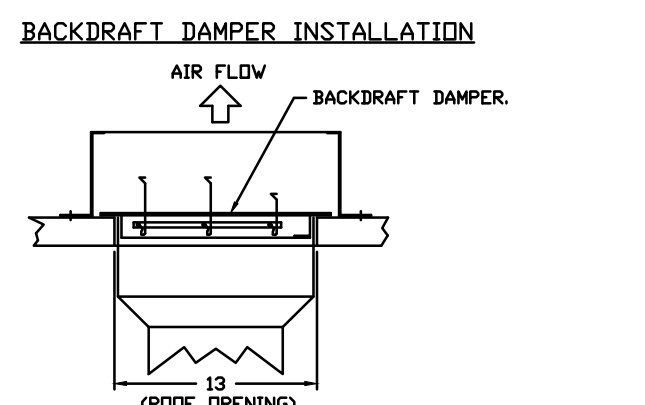
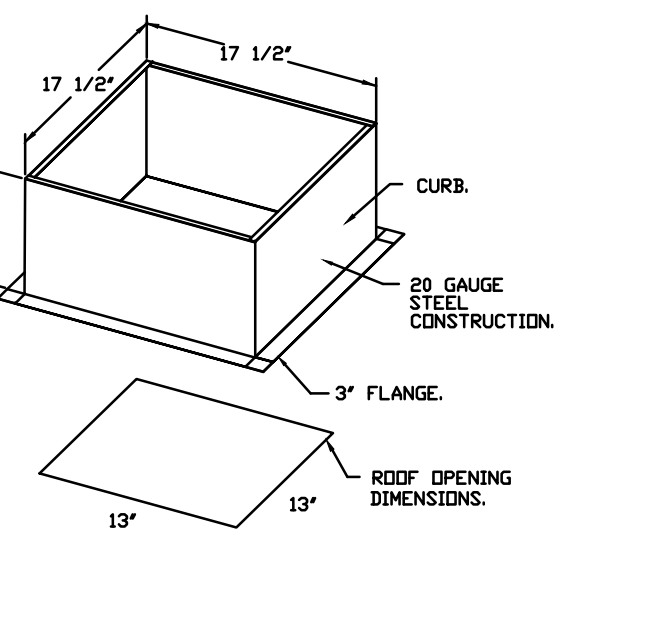
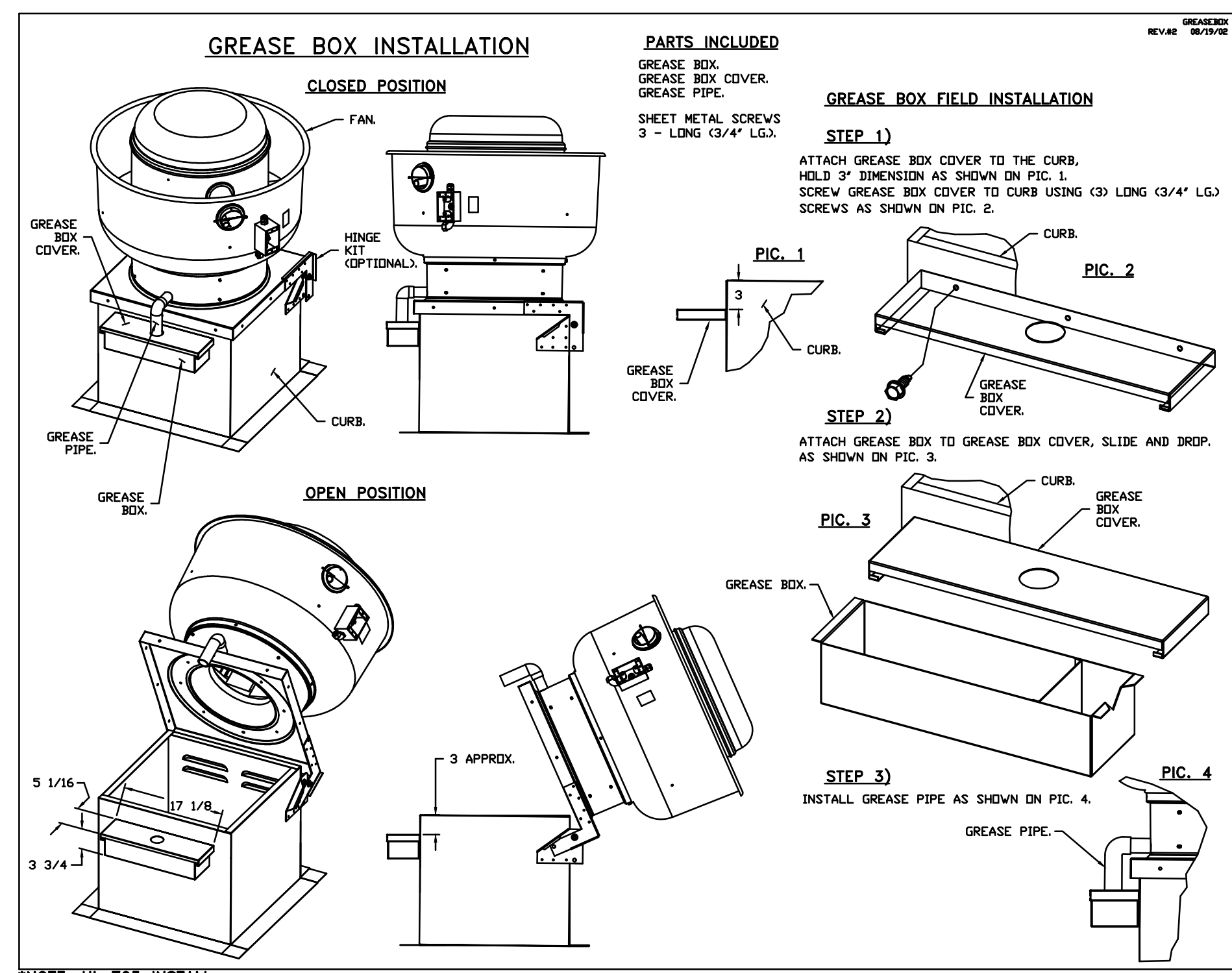
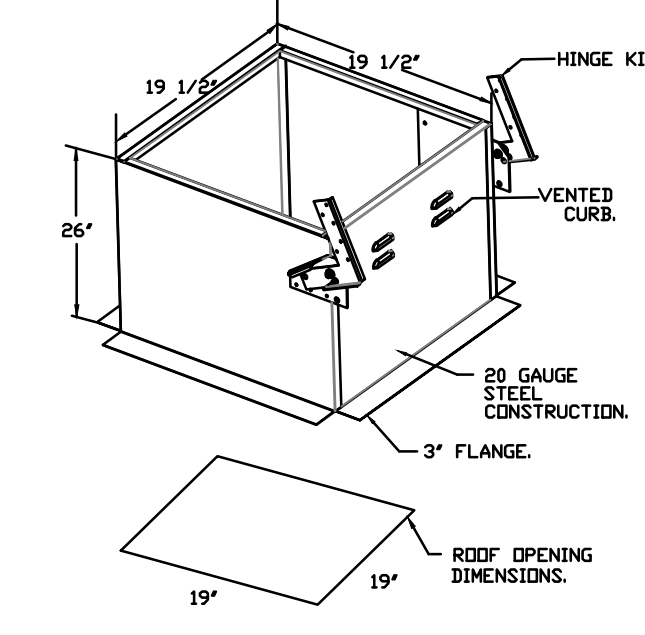
- GREASE BOX
- MIAMI DADE CERTIFICATION - NDA-1 ALUMINUM UPBLAST
- 10 YEAR PARTS WARRANTY

FEATURES:

- DIRECT DRIVE CONSTRUCTION AND BELTS/PULLEYS
- ROOF MOUNTED FAN
- 10 TON
- SAFETY DISCONNECT
- STANDARD BIRD SCREEN
- SPEED CONTROL
- THERMAL OVERLOAD PROTECTION (SINGLE PHASE)

DEFINITIONS:

- MIAMI DADE CERTIFICATION - NDA-1 ALUMINUM DOWNBLAST 9
- MOTORIZED 1" IS 800 180/240V
- 10 YEAR PARTS WARRANTY



REVISIONS	DESCRIPTION	DATE

CAPTIVEAIRE
 Charlotte/Piedmont
 6303 Carmel Road Suite 105, Charlotte, NC 28226 PHONE: (704) 944-9088 FAX: 9192275952 EMAIL: reg30@captivaire.com

The Fresh Market - Seminole, FL
 SEMINOLE, FL, 33772

DATE: 8/15/2023
 DWG.#: 6025268
 DRAWN BY: WJR
 SCALE: 1/2" = 1'-0"
 MASTER DRAWING

SHEET NO. 5

CUHACI PETERSON
 2600 Malland Center Parkway
 Suite #200
 Malland, FL 32751
 P (407) 661-9100
 F (407) 661-9101
 c-p.com
 Florida Corporate Certificate #AA 000598

COPYRIGHT © 2022 - ALL REPORTS, PLANS, SPECIFICATIONS, COMPUTER FILES, FIELD DATA, NOTES & OTHER DOCUMENTS ARE INSTRUMENTS OF SERVICE PREPARED BY CUHACI PETERSON. CP is an INSTRUMENT OF SERVICE REMAINS THE PROPERTY OF CP. CP SHALL RETAIN ALL COMMON LAW, STATUTORY, AND OTHER RESERVED RIGHTS, INCLUDING THE COPYRIGHT, TRADEMARK, AND/OR REPRODUCTION OF THIS DOCUMENT WITHOUT WRITTEN PERMISSION FROM CP IS A VIOLATION OF FEDERAL COPYRIGHT LAWS.

ARCHITECT/ENGINEER SEAL

CONSULTANT

BRANDT ENGINEERING, INC.
 3800 POND HURWITZ SUITE 200
 MIDLOTHIAN, VA 23113
 PHONE: 804/794-6656
 FAX: 804/794-8888
 EMAIL: cedd@beric.com
 FL Firm Registration #26689
 JOHN S. PARKER-MECHANICAL
 LICENSE #63461
 EXPIRATION DATE: 2/28/2025



REV	DATE	REVISION / ISSUE NAME

PROJECT NO: 2220359
 PERMIT SUB DATE: 08/21/2023
 PROJECT: THE FRESH MARKET STORE # 257
 7774 113TH STREET N SEMINOLE, FL 34202

CLIENT: THE FRESH MARKET
 300 N. GREENE STREET, SUITE 1100 GREENSBORO, NORTH CAROLINA 27401

SHEET TITLE: MECHANICAL HOOD AND FAN DRAWINGS
 SHEET NO: M505

THESE PRODUCT SUBMITTAL DOCUMENTS REFERENCE AN ETL LISTED PRODUCT SYSTEM TESTED TO NFPA AND UL STANDARDS. SEALING OF THIS DOCUMENT ONLY INDICATES ITS SUITABILITY FOR USE ON THIS PROJECT, BASED ON THE MANUFACTURER PROVIDED, CERTIFIED CAPACITY AND PERFORMANCE DATA. SEALING OF THIS DOCUMENT SHOULD NOT BE IMPLIED TO TAKE RESPONSIBILITY FOR THE PRODUCT DESIGN COVERED BY THE ETL LISTING, OR THE INSTALLATION OF THE PRODUCT. SEALING OF THIS DOCUMENT IS LIMITED TO OUR SELECTION OF THIS MANUFACTURED PRODUCT AND ITS APPLICATION FOR THIS SPECIFIC INSTALLATION.

NOTE: THIS DOCUMENT MAY HAVE BEEN ELECTRONICALLY TRANSMITTED. IF UNSIGNED, IT CANNOT BE FILED FOR PUBLIC RECORD. PUBLIC RECORD FILINGS REQUIRE SIGNED AND SEALED DOCUMENTS.

