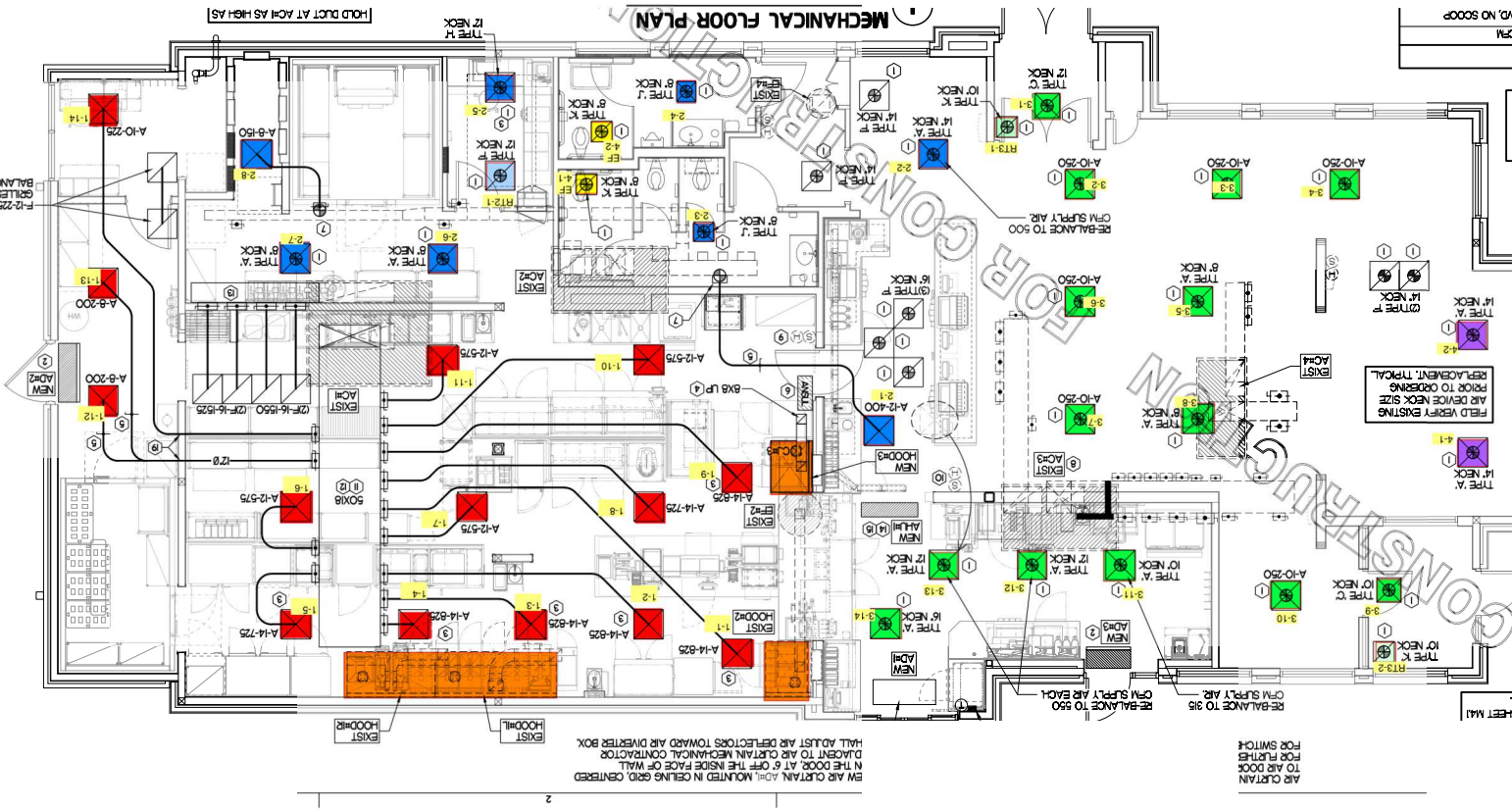


MEET ONLY)

STING TAKE-OFF IF NECESSARY. MECHANICAL CONTRACTOR SHALL PROVIDE TO MAKE CONNECTION TO AIR DEVICE IN NEW LOCATION. ANY FLEX DUCT USED SEE DETAIL I/161. COORDINATE AIR DEVICE LOCATIONS WITH ARCHITECTURAL.

MECHANICAL FLOOR PLAN



EM AIR CURTAIN ADJUSTERS MOUNTED IN CEILING GRID, CENTERED IN THE DOOR AT 6" OFF THE INSIDE FACE OF WALL. DIRECT TO AIR CURTAIN MECHANICAL CONTROLLER. SHALL ADJUST AIR DEFLECTORS TOWARD AIR DIVERter BOX.

AIR CURTAIN TO AIR DOOR FOR SWITCH FOR FLOOR

RE-BALANCE TO 316 CFM SUPPLY AIR EACH

RE-BALANCE TO 312 CFM SUPPLY AIR EACH

RE-BALANCE TO 500 CFM SUPPLY AIR

F-12-225 TRANSFER BALLS NO BALANCING DAMPER

HOOD DUCT AT ACH AS HIGH AS

FIELD VERIFY EXISTING AIR DEVICE NECK SIZE PRIOR TO ORDERING REPLACEMENT. TYPICAL.

TYPE A, 10" NECK

TYPE A, 8" NECK

TYPE A, 12" NECK

TYPE C, 10" NECK

TYPE K, 10" NECK

TYPE A, 10" NECK

TYPE A, 12" NECK

TYPE A, 10" NECK

TYPE A, 12" NECK

TYPE A, 10" NECK

TYPE A, 12" NECK

TYPE A, 10" NECK

TYPE A, 12" NECK

TYPE A, 10" NECK

TYPE A, 12" NECK

TYPE A, 10" NECK