

Report By:

NATIONAL  **TAB**

National TAB
1329 E Kemper Rd, Ste 4210
Cincinnati, OH 45246

Report: Renew

Date: 2/2/2022

PROJECT

FREDDY'S EPOCH - HASTINGS, NE - RENEW 3F (2)

3400 OSBORNE DRIVE WEST
HASTINGS, NE 68901

Client

Van Dorn Custard, LLC

Powered by



FACILIBUILD

www.facilibuild.com

National TAB

Project: FREDDY'S EPOCH - HASTINGS, NE - RENEW 3F (2)

Table Of Contents

Section	Page #
Recommendation List	3
Site Pictures	4
Checklist Data	9
Summary Data	13
AHU/RTU	14
FAN - Supply	16
FAN - Exhaust	17
COIL - DX	21

RECOMMENDATION LIST

Assigned Organization: National TAB

Status: Not Submitted

Asset:

RECOMMENDATION (CLEAN/REPAIR/REPLACE/INFO)	
INFO	There are no remaining issues to resolve at this location

Notes/Comments:

RTU-1 (DINING)
DIRTY EVAPORATOR FILTERS



RTU-1 (DINING)
CLEAN EVAPORATOR FILTERS



RTU-2 (FRONT KITCHEN/DINING)
DIRTY EVAPORATOR FILTERS



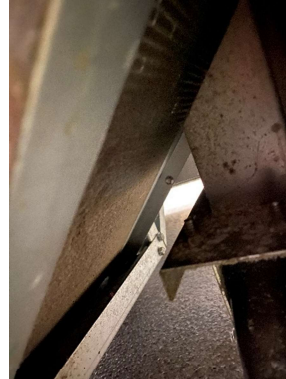
RTU-2 (FRONT KITCHEN/DINING)
CLEAN EVAPORATOR FILTERS



RTU-1 (DINING)
DIRTY EVAPORATOR



DXC-3 (MEAT COOLER 1)
DIRTY CONDENSOR



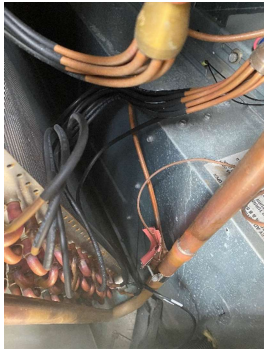
RTU-2 (FRONT KITCHEN/DINING)
DIRTY EVAPORATOR



DXC-3 (MEAT COOLER 1)
CLEAN CONDENSOR



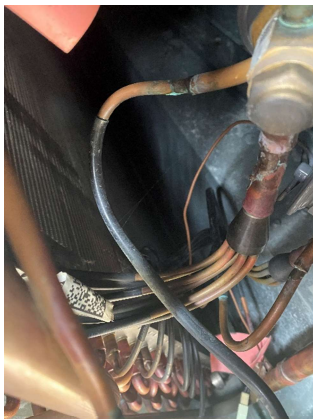
RTU-1 (DINING)
DRAIN PAN



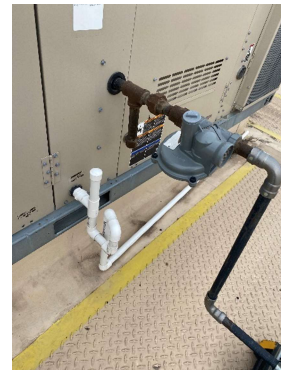
RTU-1 (DINING)
P-TRAP



RTU-2 (DINING)
DRAIN PAN



RTU-2 (DINING)
P-TRAP



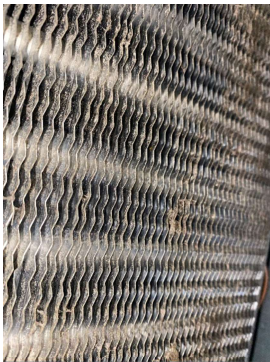
DXC-5 (PREP TABLE 1)
DIRTY CONDENSER



DXC-5 (PREP TABLE 1)
CLEAN CONDENSER



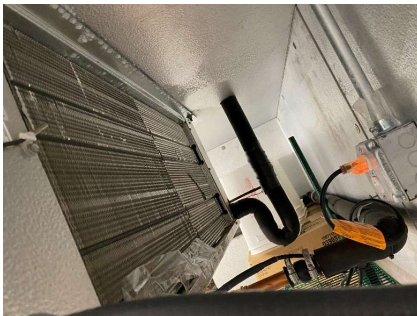
DXC-6 (PREP TABLE 2)
DIRTY CONDENSER



DXC-6 (PREP TABLE 2)
CLEAN CONDENSER



DXC-2 (WALK-IN FREEZER)
DIRTY EVAPORATOR



DXC-2 (WALK-IN FREEZER)
CLEAN EVAPORATOR



**DXC-7 (FRYER FREEZER)
DIRTY CONDENSER**



**DXC-7 (FRYER FREEZER)
CLEAN CONDENSER**



**DXC-8 (SUNDAE PREP)
DIRTY CONDENSER**



**DXC-8 (SUNDAE PREP)
CLEAN CONDENSER**



**DXC-1 (WALK-IN COOLER)
DIRTY EVAPORATOR**



**DXC-1 (WALK-IN COOLER)
CLEAN EVAPORATOR**



BUILDING PRESSURE SET POINTS

Assigned Organization: National TAB

Status: Not Submitted

Asset:

INITIAL AIRFLOWS:	
OA RTU-1 (DINING)	752
OA RTU-2 (DINING)	390
KEF-1 (GRIDDLE)	1818
KEF-2 (FRYER)	792
EF-1 (RESTROOM)	73
EF-2 (RESTROOM)	146
MAU-1	1993
TOTAL EXHUAUST	2829
TOTAL SUPPLY	3135
NET AIRFLOW	306
BUILDING PRESSURE (in W.C.)	
INITIAL BUILDING PRESSURE	-0.0016"
FINAL BUILDING PRESSURE	0.0013"

Notes/Comments:

PM CHECKLIST FOOD EQUIPMENT

Assigned Organization: National TAB

Status: Not Submitted

Asset:

WALK-IN PM CHECKLIST	
Are the doors clear of frost build up?	YES
Are the evaporators clear of frost build up?	YES
Are the walls clear of frost build up?	YES
Are the penetrations and lines clear of frost build up?	YES
Are all evaporator fans running?	YES
GENERAL FOOD EQUIPMENT	
Are the units clear of frost?	YES
Are the prefilters on the condensers clear/replaced?	YES
Are the condensate drains clear of debris (If applicable)?	YES

Notes/Comments:

PM CHECKLIST HVAC

Assigned Organization: National TAB

Status: Not Submitted

Asset:

HOOD CHECKLIST	
Smoke test capture - Perimeter of hood	100%
Smoke test capture - Top of cooking surface	100%
Hoods turn on by switch or HMI?	SWITCH
Are the hoods "FAN ON BY BUTTON" upon arrival?	YES
RTU PM CHECKLIST	
Outside air fliter clean?	[1]
Evaporator Filters Replaced?	YES
Evaporator Coil cleaned?	[1]
Condenser cleaned? (Seasonal)	[1]
Belt replaced in last 6 months?	YES
Motor ventilation cleared of dust and debris?	YES
Is there a return filter on the Dining Room RTU return duct? If so what type?	OPEN PLENUM
Is the return filter clean on the Dinning Rooms RTU Dinning duct?	NA
MAU PM CHECKLIST	
Outside air fliter clean?	[1]
Belt replaced in last 6 months?	DD
EXHUAST FAN PM CHECKLIST	
Motor ventilation cleared of dust and debris?	YES
Belt replaced in last 6 months?	DD
Motor ventilation cleared of dust and debris?	YES
Are the screws installed to secure the exhaust fan to the curb?	YES
THERMOSTAT CHECKLIST	
Are the thermostats in fan "ON" position upon arrival?	YES
Are the thermostats programed?	YES
ADDITIONAL	
Manager on Duty at time of completion.	BEN

Is the roof free of debris? if not what was left on the roof?	YES
---	-----

Notes/Comments:

[1] TO COLD TO CLEAN

Project Summary

The purpose of the visit is to perform preventative maintenance for the store. We change belts and filters, clean evaporators and condenser, and check refrigeration and heating cycle where possible. We also, check and set exhaust, outside air, and make up air coming in out of the build to the engineer's design and/or to make the space as comfortable and healthy as possible. All of this ensures a healthy and comfortable space, extends service life of units, and reduces the number of future repairs by prevention.

Freddy's locations for preventative maintenance are done in a pair. This allows two stores preventative maintenance to be completed in one day. To accomplish this the food equipment will be cleaned every 6 months. So, every other visit to a store the food equipment will be evaluated and cleaned. Food equipment was evaluated this trip.

RTUs: There evaporator coil was rinsed off and cleaned. During warmer months a self-cleaning chemical is sprayed on the evaporator. The outside air filters were rinsed off to remove any dirty, so the unit stays at the designated outside air set point. Based on static pressures, amps, and fan rpm it shows that the total supply has not changed since the last test and balance.

MAU: The intake filters had slight dirt accumulation. They were washed.

All exhaust fans were cleaned out on the roof. The vents to the motor were cleaned so they can vent properly.

Food equipment condensers were cleaned. The Walk-In evaporator were cleaned. All equipment is in good health unless stated in the Recommendation List.

All issues found are reported in the Recommendation list at the start of the report.

System/Unit: AHU/RTU

Asset: RTU1

AREA: DINING

Unit Data		
	Design	Actual
MFG	LENNOX	LENNOX
Model Num	KGB150S4B	KGB150S4B
Serial Num	-	5619L10518
Num OA Filters 1	-	2
OA Filter Size 1	-	22.5X14
Num Final Filter 1	-	4
Final Filter Size 1	-	20X25X2

Motor Data		
	Design	Actual
Motor MFG	-	NIDEC
Frame	-	184TZ
Horsepower	-	5
Motor Rpm	-	1765
Phase	-	3
Rated Voltage	-	208-230
Rated Amperage	-	13.8-13.0

Drive Data		
	Design	Actual
Num of Belts	-	1
Belt Size	-	BX59
Belt Alignment	-	VERIFIED GOOD

Test Data		
	Design	Actual
SF RPM	1030	1036
OA CFM	743	752
RL Voltage	-	208/209/208
RL Amperage	-	9.6/9.9/10.2

Performance Data		
	Design	Actual
MA Plenum SP	-	-0.69"
Fan Suction SP	-	-0.78"
Fan Discharge SP	-	0.72"
Total ESP	1.49"	1.41"
Fan Total SP	-	1.50"

General		
	Design	Actual
Unit free of Damage	-	YES
Unit Completely Assembled	-	YES
Unit Leveled	-	YES
Curb & Unit Installed Air Tight	-	YES
Controls Complete	-	YES
Unit Filters Clean	-	YES
Evap Coil Clean	-	YES
Evap Coil Free of Frost	-	YES
Condensor Coil Clean	-	YES
Condensor Fins Straight	-	YES
Refr Sight Glass Dry	-	NA
Condensate Drain Installed	-	YES
Crankcase Heaters Operate	-	YES

Completed By: Andrew Becerra on 02/02/2022

Notes:

System/Unit: AHU/RTU

Asset: RTU2

AREA: KITCHEN

Unit Data		
	Design	Actual
MFG	LENNOX	LENNOX
Model Num	KGB150S4B	KGB150S4B
Serial Num	-	5619L0516
Num OA Filters 1	-	2
OA Filter Size 1	-	22.5X14
Num Final Filter 1	-	4
Final Filter Size 1	-	20X25X2

Motor Data		
	Design	Actual
Motor MFG	-	NIDEC
Frame	-	184TZ
Horsepower	-	5
Motor Rpm	-	1765
Phase	-	3
Rated Voltage	-	208-230
Rated Amperage	-	13.8-13.0

Drive Data		
	Design	Actual
Num of Belts	-	1
Belt Size	-	BX59
Belt Alignment	-	VERIFIED GOOD

Test Data		
	Design	Actual
SF RPM	1054	1063
OA CFM	377	390
RL Voltage	-	208/209/209
RL Amperage	-	10.1/9.8/10.4

Performance Data		
	Design	Actual
MA Plenum SP	-	-0.88"
Fan Suction SP	-	-0.99"
Fan Discharge SP	-	0.96"
Total ESP	1.82"	1.84"
Fan Total SP	-	1.95"

General		
	Design	Actual
Unit free of Damage	-	YES
Unit Completely Assembled	-	YES
Unit Leveled	-	YES
Curb & Unit Installed Air Tight	-	YES
Controls Complete	-	YES
Unit Filters Clean	-	YES
Evap Coil Clean	-	YES
Evap Coil Free of Frost	-	YES
Condensor Coil Clean	-	YES
Condensor Fins Straight	-	YES
Refr Sight Glass Dry	-	NA
Condensate Drain Installed	-	YES
Crankcase Heaters Operate	-	YES

Completed By: Andrew Becerra on 02/02/2022

Notes:

System/Unit: FAN - Supply

Asset: MUA1

AREA: HD1-2

Unit Data		
	Design	Actual
MFG	CAPTIVE-AIRE	CAPTIRE AIRE
Model Num	A1-D.250-15D	A1-D.250-15D
Serial Num	-	3819045
Num Filters Size 1	-	3
Filter Size 1	-	16X20X2

Test Data		
	Design	Actual
CFM	1987	1993
SF RPM	2167	DD
Motor RPM	-	DD
RL Voltage	-	208/208/208
RL Amperage	-	3.5/3.7/3.9

Motor Data		
	Design	Actual
Motor MFG	-	TELCO
Frame	-	NL
Horsepower	-	2/1.5
Motor Rpm	-	1740
Phase	-	3
Voltage (rated)	-	230/460
Amperage (rated)	-	5.48/2.74
Service Factor	-	1.15

General		
	Design	Actual
Unit free of Damage	-	YES
Curb & Unit Installed Air Tight	-	YES
Fan Rotation Correct	-	YES
Fan Belt Condition	-	DD
Unit Filters Clean	-	YES

Drive Data		
	Design	Actual
Num of Belts	-	DD
Belt Size	-	DD
Belt Alignment Verified	-	DD

Gas Heat		
	Design	Actual
Gas Type	-	NATURAL GAS
Burner Type	-	DIRECT FIRE
Heater Operates (y/n)	-	YES
Flame Status (pass/fail)	-	PASS
Inlet Air Temp SetPt	-	55
Discharge Air Temp SetPt	-	60
Air Flow Switch SP Actual	-	0.29"

Completed By: Andrew Becerra on 02/02/2022

Notes:

System/Unit: FAN - Exhaust

Asset: EF1

AREA: MENS RR

Unit Data		
	Design	Actual
MFG	COOK	COOK
Model Num	GC-168	GC-168
Serial Num	-	104246540-0072

Test Data		
	Design	Actual
CFM	150	146

Motor Data		
	Design	Actual
Motor MFG	-	GREENHEFCK
Horsepower	-	NL
Motor Rpm	-	950
Phase	-	1
Voltage (rated)	-	115
Amperage (rated)	-	1.15

Completed By: Andrew Becerra on 02/02/2022

Notes:

System/Unit: FAN - Exhaust

Asset: EF2

AREA: WOMENS RR

Unit Data		
	Design	Actual
MFG	COOK	GREENHECK
Model Num	GC-146	SP-B150-QD
Serial Num	-	103811477-0019

Test Data		
	Design	Actual
CFM	75	73

Motor Data		
	Design	Actual
Motor MFG	-	GREENHECK
Horsepower	-	NL
Motor Rpm	-	1050
Phase	-	1
Voltage (rated)	-	115
Amperage (rated)	-	1.5

Completed By: Andrew Becerra on 02/02/2022

Notes:

System/Unit: FAN - Exhaust

Asset: KEF1

AREA: GRIDDLE

Unit Data		
	Design	Actual
MFG	CAPTIVE-AIRE	CAPITVE AIR
Model Num	DU85HFA	DU85HFA
Serial Num	-	3819045
Type	-	VERTICAL
Configuration	-	UPBLAST

Motor Data		
	Design	Actual
Motor MFG	-	US MOTORS
Frame	-	48Y
Horsepower	-	1
Motor Rpm	-	1800/VAR
Phase	-	1
Voltage (rated)	-	120/240
Amperage (rated)	-	10.2/6.1
Service Factor	-	NL

Test Data		
	Design	Actual
CFM	1800	1818
Fan RPM	1411	DD
Fan Rotation	-	CCW
Motor RPM	-	DD
System SetPt	-	115
RL Voltage	-	115
RL Amperage	-	6.4
Total ESP	-	0.62"
Fan Inlet SP	-	-0.62"
Fan Discharge SP	-	ATM

Completed By: Andrew Becerra on 02/02/2022

Notes:

System/Unit: FAN - Exhaust

Asset: KEF2

AREA: FRYER

Unit Data		
	Design	Actual
MFG	CAPTIVE-AIRE	CAPTIVE-AIRE
Model Num	DU50HFA	DU50HFA
Serial Num	-	3819045
Type	-	UPBLAST
Configuration	-	VERTICAL

Test Data		
	Design	Actual
CFM	775	792
Fan RPM	1532	DD
Fan Rotation	-	CCW
Motor RPM	-	DD
System SetPt	-	115
RL Voltage	-	115
RL Amperage	-	5.4
Total ESP	0.62"	0.58"
Fan Inlet SP	-	-0.58"
Fan Discharge SP	-	ATM

Motor Data		
	Design	Actual
Motor MFG	-	TELCO GREEN
Frame	-	NL
Horsepower	-	0.5
Motor Rpm	-	1800
Phase	-	1
Voltage (rated)	-	115
Amperage (rated)	-	6.3
Service Factor	-	NL

Completed By: Andrew Becerra on 02/02/2022

Notes:

System/Unit: COIL - DX

Asset: DXC1

AREA: WALK IN COOLER

Unit Data		
	Design	Actual
MFG	NA	KOLPAK
Model Num	NA	CLR
Serial Num	-	410200198DW1 S

General		
	Design	Actual
Evap Coil Clean	-	YES
Evap Coil Fins Straight	-	YES
Evap Coil Free of Frost	-	YES
Condensor Coil Clean	-	YES
Condensor Fins Straight	-	YES
Condensate Drain Installed	-	YES
Crankcase Heaters Operate	-	YES

Completed By: Andrew Becerra on 02/02/2022

Notes:

System/Unit: COIL - DX

Asset: DXC2

AREA: WALK IN FREEZER

Unit Data		
	Design	Actual
MFG	NA	KOLPAK
Model Num	NA	FZR
Serial Num	-	410200198DW2 S

General		
	Design	Actual
Evap Coil Clean	-	YES
Evap Coil Fins Straight	-	YES
Evap Coil Free of Frost	-	YES
Condensor Coil Clean	-	YES
Condensor Fins Straight	-	YES
Condensate Drain Installed	-	YES
Crankcase Heaters Operate	-	YES

Completed By: Andrew Becerra on 02/02/2022

Notes:

System/Unit: COIL - DX

Asset: DXC3

AREA: MEAT COOLER 1

Unit Data		
	Design	Actual
MFG	NA	DELFIELD
Model Num	NA	4427N-12M
Serial Num	-	1906152000671

General		
	Design	Actual
Evap Coil Clean	-	YES
Evap Coil Fins Straight	-	YES
Evap Coil Free of Frost	-	YES
Condensor Coil Clean	-	YES
Condensor Fins Straight	-	YES
Condensate Drain Installed	-	YES
Crankcase Heaters Operate	-	YES

Completed By: Andrew Becerra on 02/02/2022

Notes:

System/Unit: COIL - DX

Asset: DXC4

AREA: PREP TABLE 1

Unit Data		
	Design	Actual
MFG	NA	HOSHIIZAKI AMERICA
Model Num	NA	SR60A-16
Serial Num	-	H50007K

General		
	Design	Actual
Evap Coil Clean	-	YES
Evap Coil Fins Straight	-	YES
Evap Coil Free of Frost	-	YES
Condensor Coil Clean	-	YES
Condensor Fins Straight	-	YES
Condensate Drain Installed	-	YES
Crankcase Heaters Operate	-	YES

Completed By: Andrew Becerra on 02/02/2022

Notes:

System/Unit: COIL - DX

Asset: DXC5

AREA: FRYER FREEZER

Unit Data		
	Design	Actual
MFG	NA	HOSHIIZAKI AMERICA
Model Num	NA	F1A-HS
Serial Num	-	J50088E

General		
	Design	Actual
Evap Coil Clean	-	YES
Evap Coil Fins Straight	-	YES
Evap Coil Free of Frost	-	YES
Condensor Coil Clean	-	YES
Condensor Fins Straight	-	YES
Condensate Drain Installed	-	YES
Crankcase Heaters Operate	-	YES

Completed By: Andrew Becerra on 02/02/2022

Notes:

System/Unit: COIL - DX

Asset: DXC6

AREA: SUNDAE PREP

Unit Data		
	Design	Actual
MFG	NA	C.NELSON
Model Num	NA	NOT READABLE
Serial Num	-	NOT READABLE

General		
	Design	Actual
Evap Coil Clean	-	YES
Evap Coil Fins Straight	-	YES
Evap Coil Free of Frost	-	YES
Condensor Coil Clean	-	YES
Condensor Fins Straight	-	YES
Condensate Drain Installed	-	YES
Crankcase Heaters Operate	-	YES

Completed By: Andrew Becerra on 02/02/2022

Notes:

System/Unit: COIL - DX

Asset: DXC7

AREA: TOPPINGS

Unit Data		
	Design	Actual
MFG	NA	NA
Model Num	NA	NA
Serial Num	-	NOT READABLE

General		
	Design	Actual
Evap Coil Clean	-	YES
Evap Coil Fins Straight	-	YES
Evap Coil Free of Frost	-	YES
Condensor Coil Clean	-	YES
Condensor Fins Straight	-	YES
Condensate Drain Installed	-	YES
Crankcase Heaters Operate	-	YES

Completed By: Andrew Becerra on 02/02/2022

Notes: