

1B HVAC OVERALL FLOOR PLAN
1/8" = 1'-0"

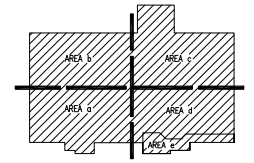


SHEET KEYNOTES

1. PROVIDE DUCTWRAP WITH A MINIMUM VALUE OF R-5. MOUNT HOOD CONTROL BOX ON WALL AS DIRECTED BY OWNER.
2. MOUNT ANSUL CABINET AND PULL STATION ON WALL AS DIRECTED BY OWNER.
3. 18x10 GREASE DUCT DOWN FROM EE-8 TO 17x10 HOOD COLLAR. REFER TO HSD-4/M3.1.1.
4. 18x10 GREASE DUCT DOWN FROM EE-9 TO 17x10 HOOD COLLAR. REFER TO HSD-4/M3.1.1.
5. 16x12 SUPPLY DUCT, SEE M1.3 FOR CONTINUATION. HOLD DUCT TIGHT TO BOTTOM OF JOISTS.
6. 16x16 SUPPLY DUCT, SEE M1.3 FOR CONTINUATION. HOLD DUCT TIGHT TO BOTTOM OF JOISTS.
7. 10x10 DROP TO 10'-0" AFF. COVER END OF DUCT WITH 1/2" HAWTHORNE CLOTH.
8. 10x10 EXHAUST DUCT, SEE M1.3 FOR CONTINUATION. HOLD DUCT TIGHT TO BOTTOM OF JOISTS.
9. 12x12 TRANSFER GRILLE, CONNECT TO 12" DUCT. MOUNT BOTTOM OF 12x12 GRILLE AT 10'-0" AFF.
10. PROVIDE AND INSTALL HVAC REFRIGERATION PIPING PER MANUFACTURER'S RECOMMENDATIONS. ENCLOSE PIPING IN 4" PVC SLEEVE. PAINT TO MATCH COLUMNS.
11. INSTALL UN-50 VENT KIT PROVIDED BY HOBART. VENT KIT AUTOMATICALLY REMOVES STEAM/CONDENSATE AT THE COMPLETION OF THE WASH CYCLE. SEE HSD-6/M3.1.1.
12. 2" 2 PSI GAS LINE. SEE DETAIL 1 ON SHEET PS.3. GAS LINE TO RISE UP TO ROOF. SEE M1.2 FOR CONTINUATION.
13. 1/4" 2 PSI GAS LINE FOR EMERGENCY GENERATOR. SEE DETAIL 1 ON SHEET PS.3. MOUNT GAS LINE AT 8" AFF ON WALL.
14. 1/4" LP GAS PIPE FROM ROOF DOWN TO HOOD H-5. SEE M1.2 FOR CONTINUATION OF GAS PIPE ON ROOF. SEE DETAIL 2 ON PS.3 FOR GAS PIPE DROP TO GAS-FIRED APPLIANCE UNDER HOOD.

GENERAL HVAC NOTES

1. PROVIDE BALANCING DAMPERS AT POINTS ON SUPPLY, RETURN, AND EXHAUST SYSTEMS WHERE BRANCHES LEAD FROM LARGE DUCTS AS REQUIRED FOR AIR BALANCING. INSTALL AT A MINIMUM OF TWO DUCT WIDTHS FROM BRANCH TAKEOFF.
2. SEE AIR DISTRIBUTION SCHEDULE FOR DUCT RUNOUT SIZES TO SUPPLY DEVICES.
3. PROVIDE TURNING VANES IN SQUARE ELBOWS. SEE DETAIL 4 SHEET M3.1.
4. CONTRACTOR TO COORDINATE LOCATION OF EXHAUST HOOD HANGERS, (TYPICAL).
5. PROVIDE BALANCE REPORT TO MECHANICAL INSPECTOR AT TIME OF HEATING FINAL INSPECTION.



6A KEY PLAN
N.T.S.



REVISIONS		
Δ	01/31/12	MS #2
Δ	04/04/12	MS #3

PROJECT #: 23941.00
DATE: SEPTEMBER 26, 2011
DRAWN BY: JED
DESIGNER: JED
CHECKED BY: MBR

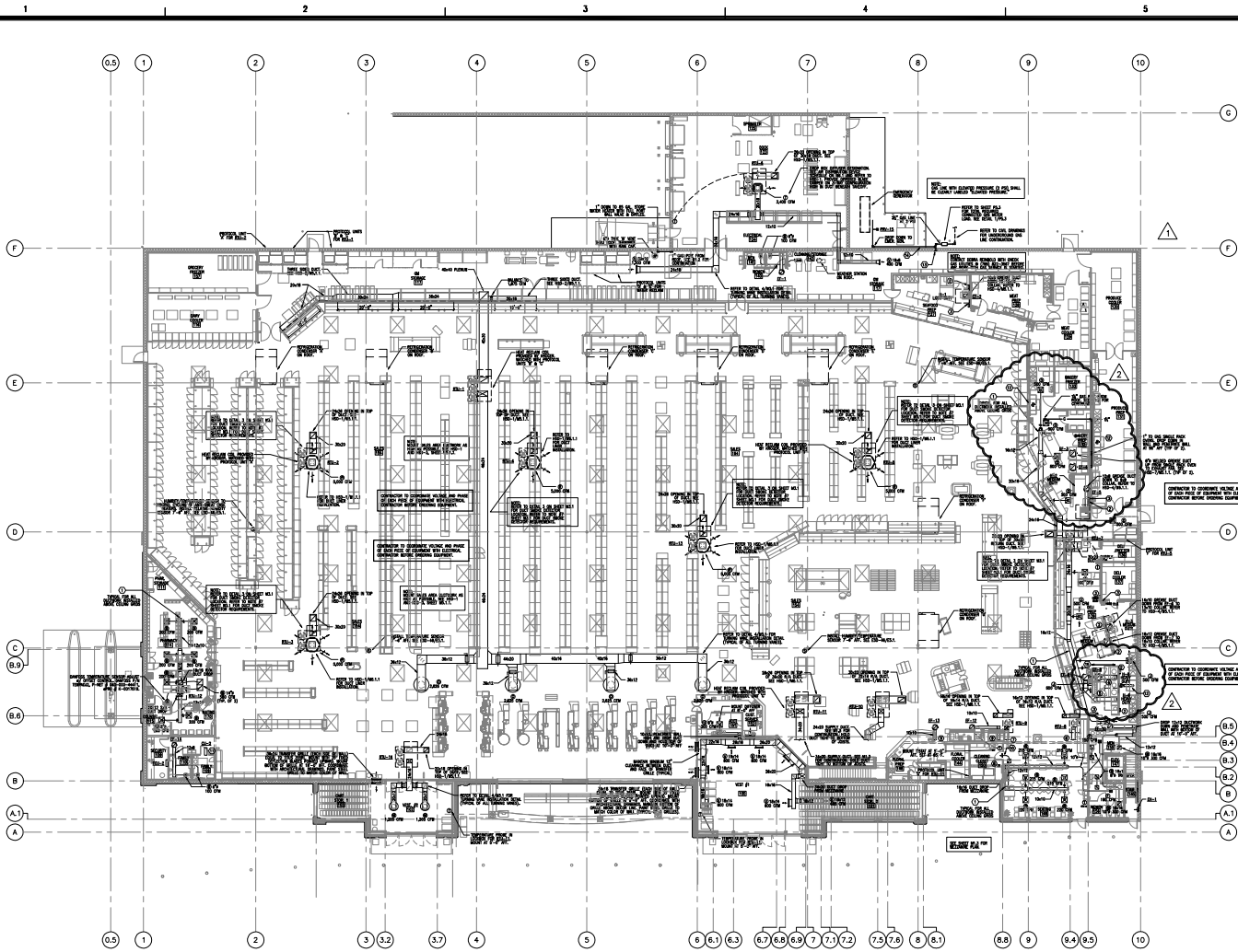


**DILLONS STORE DIL-095
NEW STORE
1235 EAST CLOUD ST
SALINA, KS 67401**



SCALE:
SHEET NUMBER:

M1.1
DESCRIPTION:
HVAC OVERALL FLOOR PLAN



1B HVAC OVERALL FLOOR PLAN
1/8" = 1'-0"

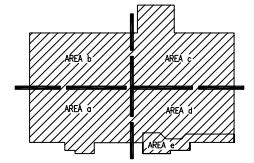


SHEET KEYNOTES

1. PROVIDE DUCTWRAP WITH A MINIMUM VALUE OF R-5. MOUNT HOOD CONTROL BOX ON WALL AS DIRECTED BY OWNER.
2. MOUNT ANSUL CABINET AND PULL STATION ON WALL AS DIRECTED BY OWNER.
3. 18x10 GREASE DUCT DOWN FROM EE-8 TO 17x10 HOOD COLLAR. REFER TO HSD-4/MS.1.1.
4. 18x10 GREASE DUCT DOWN FROM EE-9 TO 17x10 HOOD COLLAR. REFER TO HSD-4/MS.1.1.
5. 16x12 SUPPLY DUCT. SEE M1.3 FOR CONTINUATION. HOLD DUCT TIGHT TO BOTTOM OF JOISTS.
6. 16x16 SUPPLY DUCT. SEE M1.3 FOR CONTINUATION. HOLD DUCT TIGHT TO BOTTOM OF JOISTS.
7. 10x10 DROP TO 10'-0" AFF. COVER END OF DUCT WITH 1/2" HAWTHORNE CLOTH.
8. 10x10 EXHAUST DUCT. SEE M1.3 FOR CONTINUATION. HOLD DUCT TIGHT TO BOTTOM OF JOISTS.
9. 12x12 TRANSFER GRILLE. CONNECT TO 12" DUCT. MOUNT BOTTOM OF 12x12 GRILLE AT 10'-0" AFF.
10. PROVIDE AND INSTALL HVAC REFRIGERATION PIPING PER MANUFACTURER'S RECOMMENDATIONS. ENCLOSE PIPING IN 4" PVC SLEEVE. PAINT TO MATCH COLUMNS.
11. INSTALL UN-50 VENT KIT PROVIDED BY HOBART. VENT KIT AUTOMATICALLY REMOVES STEAM/CONDENSATE AT THE COMPLETION OF THE WASH CYCLE. SEE HSD-8/MS.1.1.
12. 2" 2 PSI GAS LINE. SEE DETAIL 1 ON SHEET PS.3. GAS LINE TO RISE UP TO ROOF. SEE M1.2 FOR CONTINUATION.
13. 1/4" 2 PSI GAS LINE FOR EMERGENCY GENERATOR. SEE DETAIL 1 ON SHEET PS.3. MOUNT GAS LINE AT 8" AFF ON WALL.
14. 1/4" LP GAS PIPE FROM ROOF DOWN TO HOOD H-5. SEE M1.2 FOR CONTINUATION OF GAS PIPE ON ROOF. SEE DETAIL 2 ON PS.3 FOR GAS PIPE DROP TO GAS-FIRED APPLIANCE UNDER HOOD.

GENERAL HVAC NOTES

1. PROVIDE BALANCING DAMPERS AT POINTS ON SUPPLY, RETURN, AND EXHAUST SYSTEMS WHERE BRANCHES LEAD FROM LARGE DUCTS AS REQUIRED FOR AIR BALANCING. INSTALL AT A MINIMUM OF TWO DUCT WIDTHS FROM BRANCH TAKEOFF.
2. SEE AIR DISTRIBUTION SCHEDULE FOR DUCT RUNOUT SIZES TO SUPPLY DEVICES.
3. PROVIDE TURNING VANES IN SQUARE ELBOWS. SEE DETAIL 4 SHEET M3.1.
4. CONTRACTOR TO COORDINATE LOCATION OF EXHAUST HOOD HANGERS, (TYPICAL).
5. PROVIDE BALANCE REPORT TO MECHANICAL INSPECTOR AT TIME OF HEATING FINAL INSPECTION.



6A KEY PLAN
N.T.S.



REVISIONS		
Δ	01/31/12	MS #2
Δ	04/04/12	MS #3

PROJECT #: 23941.00
DATE: SEPTEMBER 26, 2011
DRAWN BY: JED
DESIGNER: JED
CHECKED BY: MBR

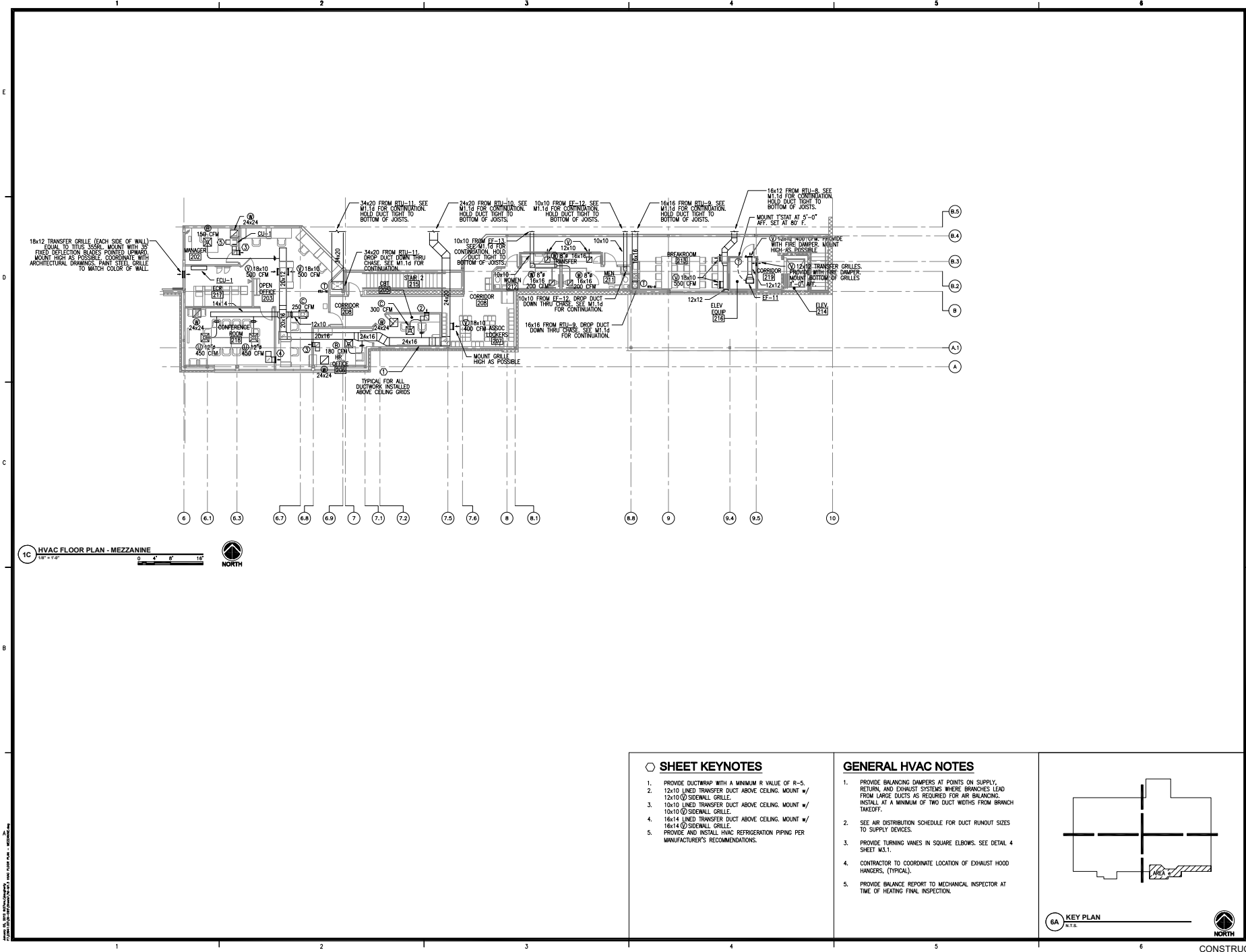


**DILLOS STORE DIL-095
NEW STORE
1235 EAST CLOUD ST
SALINA, KS 67401**



SCALE:
SHEET NUMBER:

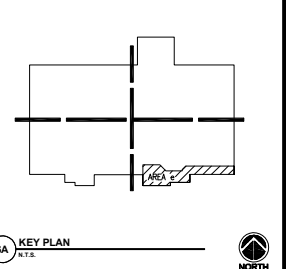
M1.1
DESCRIPTION:
HVAC OVERALL FLOOR PLAN



1C HVAC FLOOR PLAN - MEZZANINE
 1/8" = 1'-0"
 0 4' 8' 16'
 NORTH

- SHEET KEYNOTES**
1. PROVIDE DUCTWRAP WITH A MINIMUM R VALUE OF R-5.
 2. 12x10 LINED TRANSFER DUCT ABOVE CEILING. MOUNT #/ 12x10 □ SIDEWALL GRILLE.
 3. 10x10 LINED TRANSFER DUCT ABOVE CEILING. MOUNT #/ 10x10 □ SIDEWALL GRILLE.
 4. 16x14 LINED TRANSFER DUCT ABOVE CEILING. MOUNT #/ 16x14 □ SIDEWALL GRILLE.
 5. PROVIDE AND INSTALL HVAC REFRIGERATION PIPING PER MANUFACTURER'S RECOMMENDATIONS.

- GENERAL HVAC NOTES**
1. PROVIDE BALANCING DAMPERS AT POINTS ON SUPPLY, RETURN, AND EXHAUST SYSTEMS WHERE BRANCHES LEAD FROM LARGE DUCTS AS REQUIRED FOR AIR BALANCING. INSTALL AT A MINIMUM OF TWO DUCT WIDTHS FROM BRANCH TAKEOFF.
 2. SEE AIR DISTRIBUTION SCHEDULE FOR DUCT RUNOUT SIZES TO SUPPLY DEVICES.
 3. PROVIDE TURNING VANES IN SQUARE ELBOWS. SEE DETAIL 4 SHEET M3.1.
 4. CONTRACTOR TO COORDINATE LOCATION OF EXHAUST HOOD HANGERS, (TYPICAL).
 5. PROVIDE BALANCE REPORT TO MECHANICAL INSPECTOR AT TIME OF HEATING FINAL INSPECTION.



REVISIONS

PROJECT #: 23941.00
 DATE: SEPTEMBER 26, 2011
 DRAWN BY: JED
 DESIGNER: JED
 CHECKED BY: MBR

Pickering
 Pickering Firm, Inc.
 Health/Design/Construction Services
 8775 Aurora Center Court, Suite 300
 Aurora, Colorado 80016
 303.733.0810

Dillon
 2708 E. 47th
 HUTCHINSON, KS 67501

**DILLONS STORE DIL-095
 NEW STORE
 1235 EAST CLOUD ST
 SALINA, KS 67401**

Kroger
 THE KROGER CO.
 1014 VINE STREET
 CINCINNATI, OHIO 45202

SHEET NUMBER:
M1.3

DESCRIPTION:
 HVAC FLOOR PLAN - MEZZANINE

CONSTRUCTION SET 1/04/2012

