

Report By:

National TAB
1329 E. KEMPER ROAD
SUITE 4210
CINCINNATI, OH 45246



Report: Prelim Report
Function: Test, Adjust, & Balance
Date: 05/07/2025
Completed By: National TAB

PROJECT
05-05-25 CHIPOTLE #5182 MARIETTA, OH

212 PIKE ST

MARIETTA, OH 45750

Client

Chipotle Mexican Grill
610 Newport Center Drive, Suite 1100
Newport Beach, CA 92660

National TAB

Project: 05-05-25 CHIPOTLE #5182 MARIETTA, OH

Table Of Contents

Section	Page #
Checklist Data	3
Issue Data	12
AHU/RTU	18
FAN - Exhaust	24
FAN - Supply	27
Kitchen Hood Type I	28

CheckList List

- 01: RTU'S/AHU'S
- 02: EF'S
- 03: MUA
- 04: HOODS
- 05: FINAL TESTS



05-05-25 CHIPOTLE #5182 MARIETTA, OH

CheckList Information

Name : 01: RTU'S/AHU'S **Status :** Completed
Assigned Organization : National TAB **Asset :**
Requesting Organization : National TAB
Created Date : 03/13/2025 - Kyle Henry - National TAB
Completed Date : 05/07/2025 - Jordan Best - National TAB

CheckList Item Details

RTU's/AHU's

Thermostats installed and have power? Yes

Comment:

All diffusers and grilles are installed and match design? Yes

Comment:

Deflector plates are removed from 1x1 diffusers on the serve line (double check that this is specified on the diffuser schedule first) Yes

Comment:

Economizer blank plate is installed below the outside air intake (Trane only) (N/A = not applicable) N/A

Comment:

Economizers are assembled and functional? Yes

Comment:

DCV Max damper opening position is set to minimum? Yes

Comment:

Free cooling enthalpy set point set for lowest setting (Typically "D")

Yes

Comment:

Motors are all operating below the FLA rating?

Yes

Comment:

Are belts tight?

Yes

Comment:

If direct drive unit is the speed controller working?

N/A

Comment:

Is gas piping installed and valves turned on?

Yes

Comment:

Unit free of noticeable noise and vibration

Yes

Comment:

Final outside air damper position is marked with permanent marker?

Yes

Comment:

Notes/Comments :

Both units below design. Originally had to have MC align both units correctly above supply duct. I suspect there is still considerable leakage above ceiling and at each duct connection leading to low flow.

Date :05/07/2025



05-05-25 CHIPOTLE #5182 MARIETTA, OH

CheckList Information

Name : 02: EF'S **Status :** Completed

Assigned Organization : National TAB **Asset :**

Requesting Organization : National TAB

Created Date : 03/13/2025 - Kyle Henry - National TAB

Completed Date : 05/07/2025 - Jordan Best - National TAB

CheckList Item Details

EF's

Rotation is correct?	Yes
-----------------------------	-----

Comment:

Belts are tight?	N/A
-------------------------	-----

Comment:

Viroguard installed on hood fan(s)?	Yes
--	-----

Comment:

Hinge kit installed installed on hood fan?	Yes
---	-----

Comment:

Lean fan back. Is grease duct installation adequate and is duct ran all the way to the base of the fan?	Yes
--	-----

Comment:

Flex conduit is long enough so that fan can be completely tilted back?	Yes
---	-----

Comment:

There is no major leakage around base of fan?

No

Comment:

Is the motor operating below the motor FLA rating?

Yes

Comment:

For restroom fan(s) is the back draft damper installed and can it fully open?

Yes

Comment:

Unit free of noticeable noise and vibration?

Yes

Comment:



05-05-25 CHIPOTLE #5182 MARIETTA, OH

CheckList Information

Name : 03: MUA **Status :** Completed

Assigned Organization : National TAB **Asset :**

Requesting Organization : National TAB

Created Date : 03/13/2025 - Kyle Henry - National TAB

Completed Date : 05/07/2025 - Jordan Best - National TAB

CheckList Item Details

MUA

Rotation is correct?	Yes
----------------------	-----

Comment:

Gas piping is installed and valves are in on position?	Yes
--	-----

Comment:

Internal motorized damper is fully opening?	Yes
---	-----

Comment:

Motor is operating below the FLA rating?	Yes
--	-----

Comment:

Unit free of noticeable noise and vibration?	Yes
--	-----

Comment:



05-05-25 CHIPOTLE #5182 MARIETTA, OH

CheckList Information

Name : 04: HOODS **Status :** Completed

Assigned Organization : National TAB **Asset :**

Requesting Organization : National TAB

Created Date : 03/13/2025 - Kyle Henry - National TAB

Completed Date : 05/07/2025 - Jordan Best - National TAB

CheckList Item Details

HOODS

All hood filters installed and accounted for? Yes

Comment:

Hoods are wired and have power? Yes

Comment:

Hood is free of alarms? Yes

Comment:

Hood is free of damage? Yes

Comment:

Quarter or full vertical end panels are installed if specified? Yes

Comment:



05-05-25 CHIPOTLE #5182 MARIETTA, OH

CheckList Information

Name : 05: FINAL TESTS **Status :** Completed

Assigned Organization : National TAB **Asset :**

Requesting Organization : National TAB

Created Date : 03/13/2025 - Kyle Henry - National TAB

Completed Date : 05/07/2025 - Jordan Best - National TAB

CheckList Item Details

FINAL CHECKS

Is space free of drafting? Yes

Comment:

Is space comfortable in all areas? No

Comment:

Is the space free of ventilation noise? Yes

Comment:

List kitchen equipment turned on for testing N/A

Comment:

All

List smoke candle type used

Comment:

S-102 45 Second

HOOD CAPTURE TEST

Smoke test capture % - Perimeter of hood

Comment:

100%

Smoke test capture % - Top of cooking surface

Comment:

100%

WITNESS

Date test was completed

03/18/2025

Comment:

TAB tech name / Firm

Comment:

Jordan Best / NTi

Site super name / Firm

Comment:

Forest Little / Dalo Construction

Owner representative name / Firm (if Applicable)

Comment:

BUILDING PRESSURE

Do actual net building airflow, design net building airflow, and pressure coincide? If not why? (All three should either be positive or negative)

Pass

Comment:

OA designs adjusted to match below design flows.

Issue List

- Office Diffuser Restricted Flow
- RTU's Below Design
- RTU-2 Air Flow Proving Shutdown
- RTU-2 Cooling Not Functional
- RTU-2 Supply Air Leakage

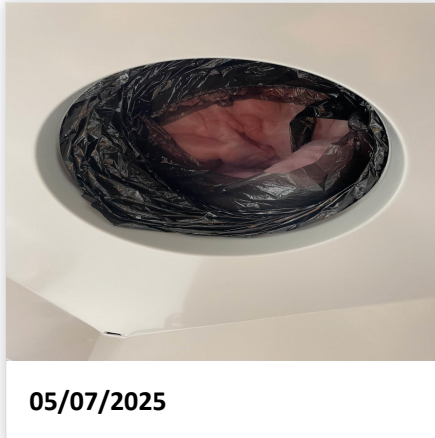


05-05-25 CHIPOTLE #5182 MARIETTA, OH

Project Issue Information

Issue Name : Office Diffuser Restricted Flow
Description : Supply diffuser for managers office is well below design due to poor connection at take-off and kinked flex / poor routing to diffuser.
Created By : National TAB **Assigned To :** National TAB - Jordan Best
Status : Open
Priority : Urgent **Asset Tag :**
Originated Date : 05/07/2025 - Jordan Best - National TAB

Project Issue File Details





05-05-25 CHIPOTLE #5182 MARIETTA, OH

Project Issue Information

Issue Name : RTU's Below Design
Description : Returned 05/07/25 to finish TAB and found both units to be below design flow at 100% with motor sheave fully spun in (at highest speed). I suspect there is significant leakage above ceiling and at all duct work connections due to sub-par install across the board. OA percentages adjusted to reflect measured flow.

Created By : National TAB **Assigned To :** National TAB - Jordan Best
Status : Open
Priority : Urgent **Asset Tag :**
Originated Date : 05/07/2025 - Jordan Best - National TAB



05-05-25 CHIPOTLE #5182 MARIETTA, OH

Project Issue Information

Issue Name : RTU-2 Air Flow Proving Shutdown
Description : Observed a "shutdown due to airflow proving switch" error message. I tested the unit in commissioning mode successfully however I was unable to clear error message. Recommend contacting MC to further diagnose. I suspect unit is sitting idle most of the day, manager states that building pressure is typically negative and dining area is warm.

Created By : National TAB **Assigned To :** National TAB - Jordan Best
Status : Open
Priority : Urgent **Asset Tag :**
Originated Date : 05/07/2025 - Jordan Best - National TAB



05-05-25 CHIPOTLE #5182 MARIETTA, OH

Project Issue Information

Issue Name : RTU-2 Cooling Not Functional
Description : During return I observed warm temps in the dining area. While testing unit I attempted to stage it into cooling and neither compressor activated when called for. This will cause the dining area to be warmer and warmer as temperatures continue to rise. Recommend contacting MC ASAP to resolve.

Created By : National TAB **Assigned To :** National TAB - Jordan Best
Status : Open
Priority : Urgent **Asset Tag :**
Originated Date : 05/07/2025 - Jordan Best - National TAB

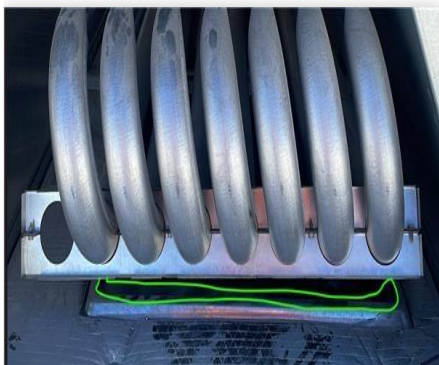


05-05-25 CHIPOTLE #5182 MARIETTA, OH

Project Issue Information

Issue Name : RTU-2 Supply Air Leakage
Description : RTU-2 is below design at full speed due to a gap inside the supply section of the unit. RTU discharge opening is not centered over duct opening causing air to leak into the roof membrane and above ceiling. This issue must be corrected before TAB can be completed.
Created By : National TAB **Assigned To :** National TAB - Jordan Best
Status : Open
Priority : Urgent **Asset Tag :**
Originated Date : 03/18/2025 - Jordan Best - National TAB

Project Issue File Details



03/18/2025

National TAB

Project: 05-05-25 CHIPOTLE #5182 MARIETTA, OH

System/Unit: AHU/RTU



Asset: RTU1

AREA:KITCHEN

Unit Data		
	Design	Actual
MFG	YORK	YORK
Serial Num	-	N2H4717501
Model Num	ZJ120	ZJ120N18R2B5EA
Type	RTU	RTU
Configuration	VERTICAL	VERTICAL
Num OA Filters 1	-	1
OA Filter Size 1	-	30"X22"
Num Final Filter 1	-	4
Final Filter Size 1	-	20"X20"X2"

Motor Data		
	Design	Actual
Motor MFG	-	BALDOR
Frame	-	56HZ
Horsepower	3	3
Motor Rpm	-	1750
Phase	3	3
Rated Voltage	208	208/230
Rated Amperage	-	8.3

Drive Data	
	Actual
Motor Sheave Size	4.75"
Motor Bore Size	0.75"
Motor Sheave SetPt	0 Turns Out
Fan Sheave Size	7"
Fan Sheave Bore	1"
Belt CL Distance	18.5"
Num of Belts	1
Belt Size	A54
Belt Alignment	Good

Test Data		
	Design	Actual
SF CFM	3500	2457
RA CFM	3000	2095
OA CFM	500	362
RL Voltage	-	212.6/214.1-214.8
RL Amperage	-	5.2 VFD
SF Rotation	-	CCW
SF System SetPt	-	100%
RA Damper Position	-	85%
Min OA Damper Position	-	15%
Min OA Damper Type	-	MOTORIZED
OA Enthalpy Setpt	-	27B

Performance Data		
	Design	Actual
MA Plenum SP	-	-0.5"
Fan Suction SP	-	-0.67
Fan Discharge SP	-	1"
Total ESP	.8"	1.5"
Fan Total SP	-	1.67"

General	
	Actual
Fan Rotation Correct	YES
Unit Filters Clean	YES
Condensate Drain Installed	YES

Completed By: Jordan Best on 05/07/2025

Unit Data - PHOTO LOG



03/18/2025

National TAB

Project: 05-05-25 CHIPOTLE #5182 MARIETTA, OH

AHU/RTU



Diffuser Supply (GRD)

RTU1/KITCHEN

Asset									
Asset Name	Location	Type	Size	DESIGN CFM	AK	CFM(1)	CFM(2)	FINAL CFM	% to design
RTU1-SGRD1	BACK	CD1	12"	375	1	293	293		-
RTU1-SGRD2	BACK	CD1	12"	375	1	284	284		-
RTU1-SGRD3	BACK	CD1	8"	150	1	25			-
RTU1-SGRD4	KITCHEN	CD2	8"	250	1	147			-
RTU1-SGRD5	KITCHEN	CD2	8"	250	1	80			-
RTU1-SGRD6	KITCHEN	CD2	8"	250	1	156			-
RTU1-SGRD7	KITCHEN	CD2	8"	250	1	172			-
RTU1-SGRD8	KITCHEN	CD1	12"	450	1	310			-
RTU1-SGRD9	KITCHEN	CD1	12"	450	1	299			-
RTU1-SGRD10	HOOD	ACPSP	165X6	700	5.4	691			-
Total				3500		2457	577	0	0%

National TAB

Project: 05-05-25 CHIPOTLE #5182 MARIETTA, OH

System/Unit: AHU/RTU



Asset: RTU2

AREA:DINING

Unit Data		
	Design	Actual
MFG	YORK	YORK
Serial Num	-	N2L4917976
Model Num	ZJ120	ZJ120N18R2B5EA
Type	RTU	RTU
Configuration	VERTICAL	VERTICAL
Num OA Filters 1	-	1
OA Filter Size 1	-	30"x22"
Num Final Filter 1	-	4
Final Filter Size 1	-	20"X20"X2"

Motor Data		
	Design	Actual
Motor MFG	-	BALDOR
Frame	-	56HZ
Horsepower	3	3
Motor Rpm	-	1750
Phase	3	3
Rated Voltage	208	208/230
Rated Amperage	-	8.3

Drive Data	
	Actual
Motor Sheave Size	4.75"
Motor Bore Size	0.75"
Motor Sheave SetPt	0 Turns Out
Fan Sheave Size	7"
Fan Sheave Bore	1"
Belt CL Distance	18.5"
Num of Belts	1
Belt Size	A54
Belt Alignment	Good

Test Data		
	Design	Actual
SF CFM	4000	3053
RA CFM	3000	2307
OA CFM	1000	746
RL Voltage	-	213.7/213.2/212.8
RL Amperage	-	6.27 VFD
SF Rotation	-	CCW
SF System SetPt	-	100%
RA Damper Position	-	75%
Min OA Damper Position	-	25%
Min OA Damper Type	-	MOTORIZED
OA Enthalpy Setpt	-	27B

Performance Data		
	Design	Actual
MA Plenum SP	-	-0.5"
Fan Suction SP	-	-0.63"
Fan Discharge SP	-	0.76"
Total ESP	.8"	1.26"
Fan Total SP	-	1.39"

General	
	Actual
Fan Rotation Correct	YES
Unit Filters Clean	YES
Condensate Drain Installed	YES

Completed By: Jordan Best on 05/07/2025

Unit Data - PHOTO LOG



03/18/2025

National TAB

Project:05-05-25 CHIPOTLE #5182 MARIETTA, OH

AHU/RTU



Diffuser Supply (GRD)

RTU2/DINING

Asset									
Asset Name	Location	Type	Size	DESIGN CFM	AK	CFM(1)	CFM(2)	FINAL CFM	% to design
RTU2-SGRD1	DINING	SR2	6"	400	0.61	289	315		-
RTU2-SGRD2	DINING	SR2	6"	500	0.61	263	320	328	65.6
RTU2-SGRD3	DINING	SR1	14"	800	1	525	677	682	85.3
RTU2-SGRD4	DINING	SR1	14"	700	1	350	451	455	65.0
RTU2-SGRD5	DINING	SR1	14"	600	1	416	537	542	90.3
RTU2-SGRD6	DINING	SR1	14"	500	1	372	496	498	99.6
RTU2-SGRD7	DINING	SR1	14"	450	1	393	491	494	109.8
RTU2-SGRD8	RESTROOM	CD3	6"	50	1	59	61	54	108.0
Total				4000		2667	3348	3053	76.32%

Completed By: Jordan Best on 05/07/2025

National TAB

Project: 05-05-25 CHIPOTLE #5182 MARIETTA, OH

System/Unit: FAN - Exhaust



Asset: EF1

AREA:KITCHEN

Unit Data		
	Design	Actual
MFG	CAPTIVEAIRE	CAPTIVEAIRE
Model Num	DU180HFA	DU180HFA
Serial Num	-	7024437
Type	UPBLAST	UPBLAST
Configuration	VERTICAL	VERTICAL

Test Data		
	Design	Actual
CFM	2550	2405
Fan Rotation	-	CCW
System SetPt	-	51.2 HZ
RL Voltage	-	215.1/214.7/215.5
RL Amperage	-	5.1 VFD
Total ESP	1.2"	1.07"
Fan Inlet SP	-	-1.07"
Fan Discharge SP	-	ATM

Motor Data		
	Design	Actual
Motor MFG	-	WEG
Frame	-	182T
Horsepower	2	2
Motor Rpm	-	1170
Phase	3	3
Voltage (rated)	208	230
Amperage (rated)	-	6.4
Service Factor	-	1.15

Completed By: Jordan Best on 03/18/2025

Unit Data - PHOTO LOG



03/18/2025

National TAB

Project: 05-05-25 CHIPOTLE #5182 MARIETTA, OH

System/Unit: FAN - Exhaust



Asset: EF2

AREA:

Unit Data		
	Design	Actual
MFG	CAPTIVEAIRE	CAPTIVEAIRE
Model Num	DR12HFA	DR12HFA
Serial Num	-	7024437
Type	DOWNBLAST	DOWNBLAST
Configuration	VERTICAL	VERTICAL

Test Data		
	Design	Actual
CFM	150	154
Fan Rotation	-	CCW
System SetPt	-	60
Total ESP	.6"	0.3"
Fan Inlet SP	-	-0.3"
Fan Discharge SP	-	ATM

Motor Data		
	Design	Actual
Motor MFG	-	
Frame	-	
Horsepower	.18	0.25
Motor Rpm	-	
Phase	1	1
Voltage (rated)	120	115
Amperage (rated)	-	2.9
Service Factor	-	

Completed By: Jordan Best on 03/18/2025

Unit Data - PHOTO LOG



03/18/2025

National TAB

Project:05-05-25 CHIPOTLE #5182 MARIETTA, OH

FAN - Exhaust



Diffuser Ret/Exh (GRD)

EF2/

Asset									
Asset Name	Model Num	MFG	Type	Size	DESIGN CFM	CFM(1)	CFM(2)	FINAL CFM	% to design
EF2-1	NA	NA	ER-1	6"X6"	75	81	79	79	105.3
EF2-2	NA	NA	ER-1	6"X6"	75	102	75	75	100.0
Total					150	183	154	154	102.67%

Completed By: Jordan Best on 03/18/2025

National TAB

Project: 05-05-25 CHIPOTLE #5182 MARIETTA, OH

System/Unit: FAN - Supply



Asset: MAU1

AREA:HOOD

Unit Data		
	Design	Actual
MFG	CAPTIVEAIRE	CAPTIVEAIRE
Model Num	A1-D.250-15D	A1-D.250-15D
Serial Num	-	7024437
Type	MAU	MAU
Configuration	VERTICAL	VERTICAL

Test Data		
	Design	Actual
CFM	1300	1361
SF System SetPt	-	41.3 HZ
RL Voltage	-	216.5/214.9/215.3
RL Amperage	-	2.1 VFD

Motor Data		
	Design	Actual
Motor MFG	-	TECO WESTINGHOUSE
Frame	-	143T
Horsepower	2	1
Motor Rpm	-	1740
Phase	3	3
Voltage (rated)	208	230
Amperage (rated)	-	2.9
Service Factor	-	1.15

General	
	Actual
Fan Rotation Correct	YES

Gas Heat		
	Design	Actual
Heater Operates (y/n)	-	YES
Flame Status (pass/fail)	-	PASS
Inlet Air Temp SetPt	-	55
Discharge Air Temp SetPt	-	60
Air Flow Switch SP Actual	-	0.3"

Completed By: Jordan Best on 03/18/2025

Unit Data - PHOTO LOG



03/18/2025

National TAB

Project: 05-05-25 CHIPOTLE #5182 MARIETTA, OH

System/Unit: Kitchen Hood Type I



Asset: HD1

AREA: COOK LINE

Unit Data		
	Design	Actual
MFG	CAPTIVEAIRE	CAPTIVEAIRE
Model Num	5424 ND-2-ACPSP-F	5424 ND-2-ACPSP-F
Job / Serial Num	-	7024437
Type	TYPE I CANOPY	TYPE I CANOPY
Hood length	153"	153"
Hood Width	54"	54"
Supply Plenum Type	-	ACPSP
Supply Plenum Width	9"	9"
Supply Plenum Length	165"	165"

Test Data Exhaust		
	Design	Actual
Filter Type	CAPTRATE SOLO	CAPTRATE SOLO
Filter Size 1	16"X16"	16"X16"
Filter Qty 1	9	9
Filter AK factor size 1	1.62	1.62
Filter Total AK Area	14.58	14.58
Filter1 FPM	-	146
Filter2 FPM	-	146
Filter3 FPM	-	151
Filter4 FPM	-	191
Filter5 FPM	-	223
Filter6 FPM	-	188
Filter7 FPM	-	162
Filter8 FPM	-	146
Filter9 FPM	-	132
Filter Ave FPM(corr)	-	165
CFM	2550	2405

Cooking Equipment	
	Actual
Item 1	GRILLE
Item 2	RICE COOKER
Item 3	STOVE TOP
Item 4	FRYER

Test Data Supply		
	Design	Actual
Total Area	10.31	10.31
Kv factor (Vel)	0.81	0.81
Num of Readings	-	12
Reading1 FPM	-	216
Reading2 FPM	-	195
Reading3 FPM	-	186
Reading4 FPM	-	187
Reading5 FPM	-	171
Reading6 FPM	-	167
Reading7 FPM	-	159
Reading8 FPM	-	162
Reading9 FPM	-	139
Reading10 FPM	-	118
Reading11 FPM	-	115
Reading12 FPM	-	151
Ave FPM(corr)	-	163
CFM	1300	1361

Completed By: Jordan Best on 03/18/2025

Unit Data - PHOTO LOG



03/18/2025