

MECHANICAL PLAN NOTES:

- COORDINATE DECK PENETRATIONS WITH THE LANDLORD (IF REQUIRED). PROVIDE AND PAY FOR ANY REQUIRED REPAIR/PATCH WORK BY LANDLORD'S CONTRACTOR.
- CONTRACTOR IS RESPONSIBLE FOR ANY DAMAGE TO THE BUILDING STRUCTURE OR BUILDING UTILITIES CAUSED AS RESULT OF THE CONTRACTOR'S WORK UNDER THIS CONTRACT. IT IS RECOMMENDED THAT MASONRY/CONCRETE FLOORS/WALLS BE X-RAYED PRIOR TO ANY PENETRATIONS.
- PRIOR TO CONSTRUCTION THE CONTRACTOR SHALL VERIFY THE LOCATION OF ALL EXISTING MECHANICAL EQUIPMENT THAT SERVING THIS AND NEARBY ADJACENT SPACES AND IS TO REMAIN. CONTRACTOR SHALL VERIFY THE PROPOSED LOCATIONS OF NEW MECHANICAL EQUIPMENT AND DETERMINE IF ANY CONFLICTS (CLEARANCES, ETC.) EXIST BETWEEN EXISTING EQUIPMENT AND NEWLY INSTALLED EQUIPMENT. CONTRACTOR SHALL NOTIFY THE ENGINEER IF EQUIPMENT CANNOT BE SUBSTANTIALLY INSTALLED AND LOCATED AS INDICATED BY THESE DRAWINGS.
- REFER TO ARCHITECTURAL PLANS AND KITCHEN VENDOR DRAWINGS FOR DIMENSIONAL INFORMATION.
- A FINAL REPORT FOR THE TESTING AND ADJUSTING OF ALL NEW SYSTEMS SHALL BE COMPLETED PRIOR TO FINAL APPROVAL BY THE FIELD INSPECTOR. THIS REPORT SHALL BE SIGNED BY THE INDIVIDUAL RESPONSIBLE FOR PERFORMING THESE SERVICES.
- AN OPERATION & SYSTEMS MANUAL SHALL BE PROVIDED TO THE OWNER OR REPRESENTATIVE AND TO THE FIELD INSPECTOR AT THE TIME OF FINAL INSPECTION.
- AN AIR FILTER WITH A MINIMUM EFFICIENCY REPORTING VALUE (MERV) OF 8 OR HIGHER SHALL BE INSTALLED IN THE MECHANICAL SYSTEM FOR OUTSIDE AND RETURN AIR PRIOR TO OCCUPANCY.
- THE HVAC, REFRIGERATION, AND FIRE SUPPRESSION EQUIPMENT SHALL NOT CONTAIN CFC OR HALONS.

DUCTWORK SPECIFICATIONS:

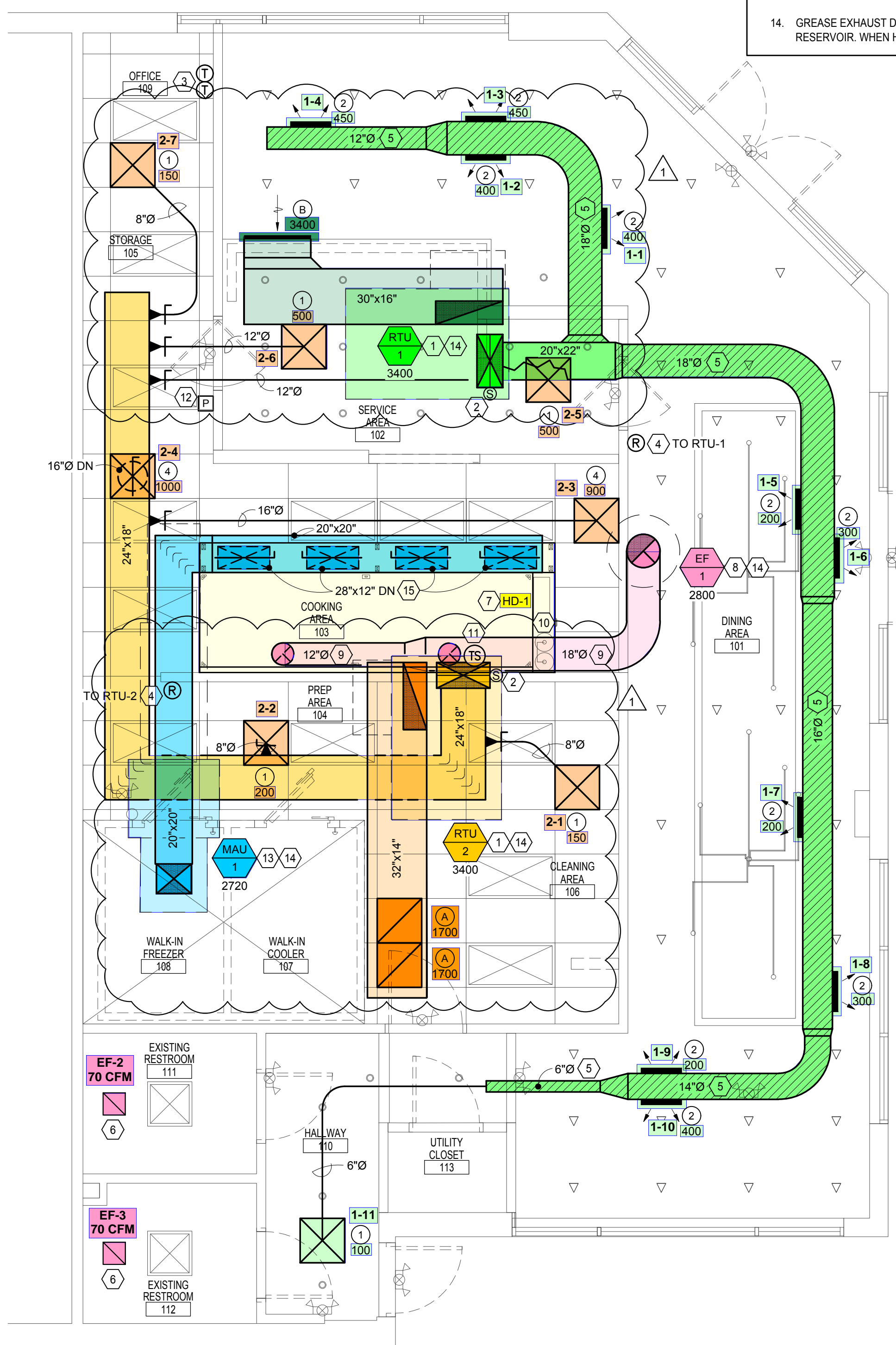
- ALL DUCTWORK SHALL BE CONSTRUCTED IN ACCORDANCE WITH SMACNA-2006 OR UL 181 AND CONFORM TO THE REQUIREMENTS OF THE LOCAL CODE.
- ALL SUPPLY AND RETURN AIR DUCTS IN UNCONDITIONED SPACES SHALL HAVE R-8 INSULATION.
- ALL CONCEALED LOW PRESSURE (<2"WG) COOLING & HEATING DUCT 20" DIA. OR LESS SHALL BE UL 181 CLASS 1 FACTORY MADE FLEXIBLE ALUMINUM DUCT INSULATED WITH R-8 INSULATION AND SHEATHED WITH A VAPOR PROOF POLYETHYLENE SLEEVE.
- ALL ROUND FLEXIBLE SUPPLY TAIL PIECES SHALL BE UL 181 CLASS 1 FACTORY MADE ACUSTICAL FLEXIBLE DUCT WITH NYLON LINER AND INSULATED WITH R-8 INSULATION SHEATHED WITH A VAPOR PROOF METALIZED POLYESTER SLEEVE. THE MAXIMUM ALLOWABLE LENGTH OF THE FLEX DUCT SHALL BE 6'-0" AND MAY NOT BE USED AS AN ELBOW.
- ALL EXPOSED LOW PRESSURE (<2"WG) COOLING & HEATING 20" DIA. OR LESS SHALL BE FACTORY MADE GALVANIZED 4-PLY SPIRAL LOCK SEAM DUCT LINED WITH R-8 INSULATION.
- ALL CONCEALED INTERIOR RECTANGULAR COOLING & HEATING DUCT SHALL BE GALVANIZED METAL WRAPPED WITH R-8 INSULATION IN ACCORDANCE WITH LOCAL CODE.
- ALL EXPOSED INTERIOR AND EXTERIOR RECTANGULAR COOLING & HEATING DUCT SHALL BE GALVANIZED METAL LINED WITH R-8 DUCT LINER IN ACCORDANCE WITH LOCAL CODE.
- ALL ROUND ENVIRONMENTAL EXHAUST AIR DUCT AND OUTSIDE AIR DUCT SHALL BE SMOOTH ROUND GALVANIZED PIPE INSTALLED IN ACCORDANCE WITH CHAPTER LOCAL CODE.
- ALL RECTANGULAR DUCTWORK SERVING TYPE I HOODS SHALL BE CONSTRUCTED OF 0.054 IN CARBON STEEL (16 GA) OR 0.043 STAINLESS STEEL (18 GA) WELDED FOR A LIQUID TIGHT SEAL IN ACCORDANCE WITH LOCAL CODE.
- DUCTWORK SHALL BE CONSTRUCTED AND SUPPORTED IN ACCORDANCE WITH THE LATEST EDITION OF THE HVAC DUCT CONSTRUCTION STANDARDS METAL AND FLEXIBLE BY THE SHEET METAL AND AIR CONDITIONING CONTRACTORS NATIONAL ASSOCIATION INC. (S.M.A.C.N.A.)
- NO EXPOSED FLEXIBLE DUCTS SHALL BE USED.
- NO RETURN AIR REGISTERS SHALL BE LOCATED 6'-0" OF A SUPPLY AIR DIFFUSER THAT DIRECTS SUPPLY AIR IN THE DIRECTION OF THE RETURN AIR REGISTER.
- ALL DUCT AND OTHER RELATED AIR DISTRIBUTION COMPONENT OPENINGS SHALL BE COVERED WITH TAPE, PLASTIC, OR SHEET METAL UNTIL THE FINAL STARTUP OF THE HEATING, COOLING AND VENTILATING EQUIPMENT.
- GREASE EXHAUST DUCT SYSTEM SHALL HAVE A SLOPE NOT LESS THAN 1/4 INCH PER LINEAR FOOT TOWARD THE HOOD OR TOWARD AN APPROVED GREASE RESERVOIR. WHEN HORIZONTAL DUCTS EXCEED 75 FEET IN LENGTH, THE SLOPE SHALL NOT BE LESS THAN 1 INCH PER LINEAR FOOT.

FIRE SUPPRESSION NOTES:

- INSPECTION: HOODS, GREASE REMOVAL DEVICES, FANS AND APPURTENANCES SHALL BE CLEANED AND INSPECTED AT INTERVALS AS LISTED IN LOCAL CODE.
- GREASE FILTERS: GREASE FILTERS SHALL BE CLASS I AS REQUIRED BY THE STATE FIRE MARSHAL AND LOCAL CODE.
- PORTABLE FIRE EXTINGUISHER: PORTABLE FIRE EXTINGUISHING EQUIPMENT SHALL BE PROVIDED AS SECONDARY PROTECTION AS REQUIRED BY LOCAL CODE.
- MANUAL ACTIVATION: MANUAL ACTIVATION DEVICE OF THE PRIMARY FIRE EXTINGUISHING SYSTEM SHALL BE PROVIDED IN COMPLIANCE WITH LOCAL CODE AND WITHIN DISTANCE AND HEIGHT AS INDICATED IN THAT LOCAL CODE.
- FUEL SHUT-OFF: PROVIDE FOR AUTOMATIC SHUT-OFF OF SOURCES OF FUEL AND ELECTRIC POWER TO COOKING EQUIPMENT UPON ACTIVATION OF THE FIRE SUPPRESSION SYSTEM AS REQUIRED BY LOCAL CODE.

HVAC KEYED NOTES:

- A/C UNIT: PROVIDE AND INSTALL NEW ROOFTOP PACKAGE GAS/ELECTRIC A/C UNIT ON FACTORY CURB PER DETAIL B4/M300. SEE EQUIPMENT SCHEDULE ON SHEET M100 FOR ADDITIONAL INFORMATION. PROVIDE DUCTWORK, PLENUMS, AND AIR DISTRIBUTION DEVICES PER PLAN. INSTALL CONTROL WIRE FOR CONTROLS AS REQUIRED. ELECTRICAL CONTRACTOR TO INSTALL CONDUIT FOR CONTROL WIRE. VERIFY AND COORDINATE CONDENSATE AND GAS PIPING WITH PLUMBING CONTRACTOR. VERIFY AND COORDINATE POWER, CONTROL CONDUIT AND DISCONNECT LOCATIONS WITH ELECTRICAL CONTRACTOR. START-UP, TEST, AND BALANCE FOR PROPER OPERATION.
- SMOKE DETECTOR: PROVIDE AND INSTALL DUCT MOUNTED SMOKE DETECTOR IN THE SUPPLY AIR SYSTEM IN ACCORDANCE WITH 2022 CMC, SECTION 809.1. DETECTOR INSTALLATION SHALL COMPLY WITH UL 288A AND NFPA 72. SEE SHEET M210 FOR DETAIL AND ELECTRICAL DRAWINGS FOR MORE INFORMATION. INTERLOCK DETECTOR TO SHUT DOWN ALL AIR DISTRIBUTION EQUIPMENT UPON THE DETECTION OF SMOKE. ELECTRICAL (FIRE ALARM) CONTRACTOR SHALL PROVIDE AND WIRE TO FIRE ALARM SYSTEM AND HVAC CONTRACTOR SHALL INSTALL. FIELD COORDINATE ALL REQUIREMENTS WITH ELECTRICAL (FIRE ALARM) CONTRACTOR PRIOR TO STARTING WORK. MOUNT MANUAL RESET SWITCH NEXT TO SENSOR FOR UNIT AT 4 FT. ABOVE FINISHED FLOOR.
- THERMOSTAT: PROVIDE AND INSTALL 7 DAY PROGRAMMABLE THERMOSTAT, WITH COOLING STAGES AND HEATING STAGES TO MATCH UNIT. AUTO CHANGEOVER, OCCUPIED AND UNOCCUPIED MODES AND TEMPERATURE OVERRIDE WHILE OCCUPIED. PROVIDE WITH REMOTE SENSOR CAPABILITY. MOUNT THERMOSTAT 48" A.F.F. AT MANAGER'S DESK. COORDINATE EXACT LOCATION WITH OWNER.
- REMOTE SENSOR: PROVIDE AND INSTALL REMOTE SENSOR FOR THERMOSTAT IN THIS LOCATION. MOUNT SENSOR AT 60" A.F.F. COORDINATE EXACT LOCATION WITH OWNER.
- EXPOSED DUCT TO BE INTERNALLY INSULATED SPIRAL. FIELD COORDINATE LOCATION WITH LIGHTING. MOUNT AT TIGHT TO BOTTOM OF STRUCTURE ABOVE.
- RESTROOM EXHAUST FAN: EXISTING CEILING MOUNTED RESTROOM EXHAUST FAN TO REMAIN. SEE SCHEDULE ON SHEET M100 FOR MORE INFORMATION. UNIT TO BE CLEANED AND ALL ITEMS REPLACED OR REPAIRED AS REQUIRED TO MAKE UNIT IN LIKE NEW CONDITION. REPLACE WITH LIKE UNIT AS REQUIRED. **ENSURE EXHAUST IS A MINIMUM OF 70 CFM**. FIELD COORDINATE ALL REQUIREMENTS PRIOR TO BID.
- EXHAUST HOOD: HOOD EQUIPMENT SUPPLIER SHALL PROVIDE AND THIS CONTRACTOR SHALL INSTALL A TYPE I EXHAUST HOOD. INSTALL STAINLESS STEEL WRAPPER PANELS AT TOP PERIMETER OF HOOD TO ABOVE T-BAR CEILING. SUPPORT HOOD AND DUCT PER MANUFACTURER'S INSTRUCTIONS. PROVIDE AND INSTALL TRANSITION FROM HOOD CONNECTION TO TYPE I DUCT. SEE SHEETS M500-M505 FOR HOOD MANUFACTURER'S SHOP DRAWINGS.
- GREASE EXHAUST FAN: HOOD EQUIPMENT SUPPLIER SHALL PROVIDE AND THIS CONTRACTOR SHALL INSTALL A NEW ROOFTOP UP-BLAST EXHAUST FAN ON FACTORY CURB. SEE SCHEDULE ON SHEET M100 AND HOOD DRAWINGS M500-M503 FOR ADDITIONAL INFORMATION. ELECTRICAL CONTRACTOR TO INSTALL CONDUIT FOR CONTROL WIRE. VERIFY AND COORDINATE POWER, CONTROL CONDUIT AND DISCONNECT LOCATIONS WITH ELECTRICAL CONTRACTOR. START-UP, TEST, AND BALANCE FOR PROPER OPERATION. FIELD COORDINATE EXACT LOCATION AND REQUIREMENTS PRIOR TO STARTING WORK.
- GREASE DUCT: HOOD EQUIPMENT SUPPLIER SHALL PROVIDE AND THIS CONTRACTOR SHALL INSTALL TYPE I, DOUBLE WALL, REDUCED CLEARANCE MANUFACTURED GREASE DUCT IN ACCORDANCE WITH LOCAL CODE FROM HOOD TO EF-1. SIZE DUCT PER PLAN. SLOPE GREASE DUCT AT 1/4" INCH PER FOOT TO THE HOOD OR APPROVED GREASE COLLECTION RESERVOIR IN ACCORDANCE WITH LOCAL CODE. FIELD COORDINATE EXACT RUN OF DUCT WITH ALL SITE CONDITIONS PRIOR TO STARTING WORK. CONTACT AND COORDINATE WITH CAPTIVE AIRE FOR REQUIRED DUCT SECTIONS. SEE SHEET M503-M505 FOR DUCT SPECIFICATIONS.
- FIRE SUPPRESSION SYSTEM: ANSUL R-102 FIRE SUPPRESSION SYSTEM FOR TYPE I KITCHEN HOOD. SYSTEM SHALL BE INCLUDED WITH HOOD FROM HOOD SUPPLIER. SYSTEM TO INCLUDE ANSUL REGULATED RELEASE ASSEMBLY W/ WET CHEMICAL STORAGE TANK WET CHEMICAL AGENT. DISTRIBUTION PIPING, GAS SOLENOID VALVE, AND PULL STATION ASSEMBLY. TYPE I HOOD COMES PRE-PIPED WITH ANSUL DISCHARGE NOZZLES. COORDINATE INSTALLATION WITH ELECTRICAL AND PLUMBING CONTRACTORS. LOCATE GAS SOLENOID VALVE PER GAS PIPING PLANS. VERIFY EXACT LOCATIONS WITH OWNER. SYSTEM SHALL BE U.L. LISTED AND BE U.L. 300 COMPLIANT.
- TEMPERATURE SENSOR PROVIDED BY HOOD SUPPLIER. INSTALL PER HOOD SUPPLIER REQUIREMENTS IN LOCATION SHOWN.
- FIRE SUPPRESSION PULL STATION: PROVIDE AND INSTALL ANSUL R-102 PULL STATION FOR MANUAL ACTIVATION OF HOOD FIRE SUPPRESSION SYSTEM. COORDINATE WITH HOOD EQUIPMENT SUPPLIER. LOCATE IN READILY ACCESSIBLE LOCATION IN PATH OF EGRESS.
- MAKE-UP AIR UNIT: HOOD EQUIPMENT SUPPLIER SHALL PROVIDE AND THIS CONTRACTOR SHALL INSTALL WHERE SHOWN ON PLANS A ROOF MOUNTED MAKE-UP AIR UNIT (MAU-1) WITH SPLIT DX COOLING. SEE SCHEDULE ON SHEET M100 AND HOOD DRAWINGS SHEETS M500-M502 FOR MORE INFORMATION. COORDINATE WITH ELECTRICAL CONTRACTORS FOR CONNECTION REQUIREMENTS.
- INTERLOCK: ELECTRICALLY INTERLOCK SUPPLY FANS OF ROOFTOP UNITS (RTU-1 & 2), MAKE-UP AIR UNIT (MAU-1) AND EXHAUST FAN (EF-1) FOR SIMULTANEOUS OPERATION TO PROVIDE MAKE UP AIR TO HOOD. WHEN EQUIPMENT UNDER HOOD IS INITIALIZED, SUPPLY FANS AND EXHAUST FAN SHALL COME ON AND GO INTO OCCUPIED MODE. COORDINATE INTERLOCK WORK WITH ELECTRICAL CONTRACTOR. LOCATE INTERLOCK ON/OFF SWITCH NEAR HOOD PER OWNER. SUPPLY FANS TO RUN CONTINUOUSLY DURING OCCUPIED HOURS TO MAINTAIN BALANCE. HEATING COOLING SECTION SHALL OPERATE BASED UPON SET POINT OF THERMOSTAT.
- FABRICATE AND INSTALL SUPPLY DUCT ACCORDING TO ASHRAE LOW PRESSURE STANDARDS FROM MAKE-UP AIR TO HOOD SUPPLY PLENUM. FIELD COORDINATE EXACT RUN. TRANSITION DUCT TO FULL SIZE OF EXHAUST HOOD DUCT RISER. COORDINATE WITH HOOD DRAWINGS FOR EXACT DIMENSIONS.



Materials exposed within ducts or plenums shall be noncombustible or shall have a flame spread index <25, and a smoke developed index <50.

SEE SHEET M100 FOR ALL SCHEDULES

Air System Heat Balance Summary for RTU-1
(In Alternative: HVAC Calcs)

Project: 23374 DHC Oxnard, CA
Prepared by: Applied Engineering Group
01/31/2024
12:07 PM

COMPONENT LOADS	DESIGN COOLING - AUGUST 10:00			DESIGN HEATING		
	Details	OA DB / WS / 75.5 F / 56.8 F	Latent [BTU/hr]	Details	OA DB / WS / 40.6 F / 34.1 F	Latent [BTU/hr]
Zone Conditioning		49732	11197		15167	0
Plenum Load		0	0		0	0
Return Fan Load		3007 CFM	0		3007 CFM	0
Ventilation Load		704 CFM	-6810		704 CFM	22324
Supply Fan Load		3007 CFM	4458		3007 CFM	-4458
Zone Fan Coil Fans Load		0	0		0	0
>> Total System Loads		56963	4387		33034	0
Central Cooling Coil		52882	4558		0	0
Central Heating Coil		0	0		33197	0
>> Total Conditioning		52982	4558		33197	0

Zone Heat Balance Component	DESIGN COOLING - AUGUST 10:00			DESIGN HEATING		
	Details	OA DB / WS / 75.5 F / 56.8 F	Latent [BTU/hr]	Details	OA DB / WS / 40.6 F / 34.1 F	Latent [BTU/hr]
Exterior Wall Convection		1167 sqft	4677		1167 sqft	1808
Roof Convection		787 sqft	3628		787 sqft	1707
Window Convection		624 sqft	4167		624 sqft	4325
Skylight Convection		0 sqft	0		0 sqft	0
Door Convection		105 sqft	1483		105 sqft	893
Floor Convection		1029 sqft	5115		1029 sqft	3014
Interior Wall Convection		1781 sqft	4389		1781 sqft	1428
Ceiling Convection		242 sqft	995		242 sqft	329
Overhead Lighting Convection		0 W	837		0 W	0
Task Lighting Convection		0 W	0		0 W	0
Electric Equipment Convection		0 W	0		0 W	0
People Convection		37	3108		0	0
Infiltration		0 CFM	0		0 CFM	0
Miscellaneous Equipment		19700	1980		0	0
Air Internal Energy Change		0	0		0	0
Safety Factor		0% / 0%	0		0%	0
>> Total Zone Loads		48107	11970		13594	0

- Note 1:** Surface convection line items show the combined effects of conductive heat gain to the surface and radiative heat gains absorbed at the surface which are then convected to room air.
- Note 2:** Lighting, equipment, and people line items include only the direct convective heat gain from the heat source to the room air. The radiative portion of the heat gain is first absorbed by surfaces in the room and then later convected from the surface to the air. Therefore the effect of the radiative portion of the heat gain is found in the surface convection line items.
- Note 3:** Solar heat gain is absorbed by surfaces in the room, re-radiated to other surfaces, and finally convected from the surfaces to room air. Therefore, the effect of solar heat gain is found in the surface convection line items.

Air System Heat Balance Summary for RTU-2
(In Alternative: HVAC Calcs)

Project: 23374 DHC Oxnard, CA
Prepared by: Applied Engineering Group
01/31/2024
12:07 PM

COMPONENT LOADS	DESIGN COOLING - AUGUST 9:00			DESIGN HEATING		
	Details	OA DB / WS / 73.5 F / 56.0 F	Latent [BTU/hr]	Details	OA DB / WS / 40.6 F / 34.1 F	Latent [BTU/hr]
Zone Conditioning		69266	10792		4198	0
Plenum Load		0	0		0	0
Return Fan Load		4214 CFM	0		4214 CFM	0
Ventilation Load		228 CFM	412		228 CFM	7230
Supply Fan Load		4214 CFM	6247		4214 CFM	-6247
Zone Fan Coil Fans Load		0	0		0	0
>> Total System Loads		75925	8740		5181	0
Central Cooling Coil		70398	9077		0	0
Central Heating Coil		0	0		5234	0
>> Total Conditioning		70398	9077		5234	0

Zone Heat Balance Component	DESIGN COOLING - AUGUST 9:00			DESIGN HEATING		
	Details	OA DB / WS / 73.5 F / 56.0 F	Latent [BTU/hr]	Details	OA DB / WS / 40.6 F / 34.1 F	Latent [BTU/hr]
Exterior Wall Convection		43 sqft	139		43 sqft	47
Roof Convection		179 sqft	873		179 sqft	288
Window Convection		20 sqft	125		20 sqft	139
Skylight Convection		0 sqft	0		0 sqft	0
Door Convection		0 sqft	0		0 sqft	0
Floor Convection		799 sqft	5035		799 sqft	631
Interior Wall Convection		2676 sqft	9453		2676 sqft	1913
Ceiling Convection		620 sqft	4846		620 sqft	706
Overhead Lighting Convection		0 W	531		0 W	0
Task Lighting Convection		0 W	0		0 W	0
Electric Equipment Convection		0 W	0		0 W	0
People Convection		7	515		0	0
Infiltration		0 CFM	0		0 CFM	0
Miscellaneous Equipment		49650	9850		0	0
Air Internal Energy Change		0	0		0	0
Safety Factor		0% / 0%	0		0%	0
>> Total Zone Loads		71163	11295		3705	0

- Note 1:** Surface convection line items show the combined effects of conductive heat gain to the surface and radiative heat gains absorbed at the surface which are then convected to room air.
- Note 2:** Lighting, equipment, and people line items include only the direct convective heat gain from the heat source to the room air. The radiative portion of the heat gain is first absorbed by surfaces in the room and then later convected from the surface to the air. Therefore the effect of the radiative portion of the heat gain is found in the surface convection line items.
- Note 3:** Solar heat gain is absorbed by surfaces in the room, re-radiated to other surfaces, and finally convected from the surfaces to room air. Therefore, the effect of solar heat gain is found in the surface convection line items.

LEGEND*

- EXISTING DUCTWORK
- NEW DUCTWORK
- SPIRAL DUCTWORK WITH INTERNAL INSULATION
- HIDDEN ROUND DUCT
- CEILING SUPPLY AIR DIFFUSER
- CEILING RETURN AIR GRILLE
- DUCT MOUNTED SUPPLY AIR DIFFUSER
- CEILING EXHAUST AIR GRILLE
- TURNING VANE
- BRANCH TAKE-OFF WITH BALANCING DAMPER
- SMOKE DETECTOR
- HORN/STROBE
- THERMOSTAT/REMOTE SENSOR
- CARBON DIOXIDE SENSOR
- AIR DEVICE TYPE CFM AMOUNT
- SUPPLY AIRFLOW
- RETURN AIRFLOW
- OUTSIDE AIR
- SUPPLY AIR
- RETURN AIR
- FIRE DAMPER

* ALL SYMBOLS MAY NOT BE USED

LINGLE DESIGN GROUP
158 WEST MAIN STREET
LENA, IL 61048
815.369.9155
1764 BLAKE ST
DENVER, CO 80202
303.974.5873
WWW.LINGLEDISIGN.COM

ENGINEER:
David W. Mullen, PE
7402 East Broad Street
Blacklick, Ohio 43004
Phone: 614.322.7050
MEP Building Consultant

REGISTERED PROFESSIONAL ENGINEER
DAVID W. MULLEN
M 31814
EXP. 09.30.25
MECHANICAL
STATE OF CALIFORNIA

PROJECT #: 23374
DRAWN BY: CHECKED BY: DRR

REVISIONS

- 01/05/24 - DD SET
- 02/12/24 - PERMIT SET
- 07/08/24 - REVISION 1 CITY COMMENTS
- 07/30/24 - REVISION 2 CITY COMMENTS

DAVE'S HOT CHICKEN
STORE: ---
ADDRESS: 341 W. ESPLANADE DR., OXNARD, CA 93036

SHEET TITLE: MECHANICAL PLAN
SHEET NUMBER: M200