

HOOD INFORMATION - JOB#5389523

HOOD NO	TAG	MODEL	MANUFACTURER	LENGTH	MAX COOKING TEMP	TYPE	APPLIANCE DUTY	DESIGN CFM/FT	TOTAL EXH CFM	EXHAUST PLENUM RISER(S)						TOTAL SUPPLY CFM	HOOD CONSTRUCTION	HOOD CONFIG		
										WIDTH	LENG	HEIGHT	DIA	CFM	VEL			SP	END TO END	ROW
1	HD 1	7824 EX-2-PSP-F	ECON-AIR	10' 0"	600 DEG	I	HEAVY	200	2000			4'	14'	2000	1871	-0.534'	1600	430 SS WHERE EXPOSED	ALONE	ALONE

PATENT NUMBERS

AC-PSP (UNITED STATES) - US PATENT 7963830 B2.
 AC-PSP WALL (CANADA) - CA PATENT 2820509.
 AC-PSP ISLAND (CANADA) - CA PATENT 2520330.

HOOD INFORMATION

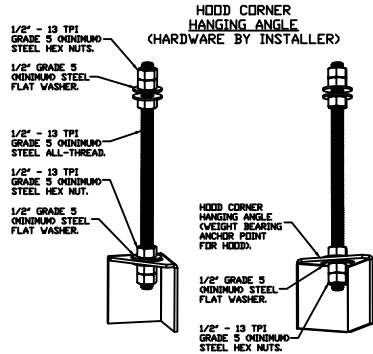
HOOD NO	TAG	FILTER(S)				LIGHT(S)				UTILITY CABINET(S)				FIRE SYSTEM PIPING	HOOD HANGING WEIGHT		
		TYPE	QTY	HEIGHT	LENGTH	EFFICIENCY @ 7 MICRONS	QTY	TYPE	WIRE GUARD	LOCATION	SIZE	FIRE SYSTEM				ELECTRICAL	SWITCHES
1	HD 1	SS BAFFLE WITH HANDLES	7	16"	16"	30%	4	L55 SERIES E26	NO	RIGHT	12"x78"x24"			SC-311110MA	1 LIGHT 1 FAN	NO	711 LBS

HOOD OPTIONS

HOOD NO	TAG	OPTION
1	HD 1	FIELD WRAPPER 6.00' HIGH FRONT, LEFT, RIGHT. BACKSPLASH 80.00' HIGH X 132.00' LONG 430 SS VERTICAL. BACKSPLASH 108.00' HIGH X 18.00' LONG 430 SS VERTICAL. LEFT QUARTER END PANEL 23' TOP WIDTH, 0' BOTTOM WIDTH, 23' HIGH 430 SS. RIGHT QUARTER END PANEL 23' TOP WIDTH, 0' BOTTOM WIDTH, 23' HIGH 430 SS.

PERFORATED SUPPLY PLENUM(S)

HOOD NO	TAG	POS	LENGTH	WIDTH	HEIGHT	TYPE	RISER(S)				
							WIDTH	LENG	DIA	CFM	SP
1	HD 1	Front	132'	14'	6'	MUA	12"	24"		800	0.240'
						MUA	12"	24"		800	0.240'

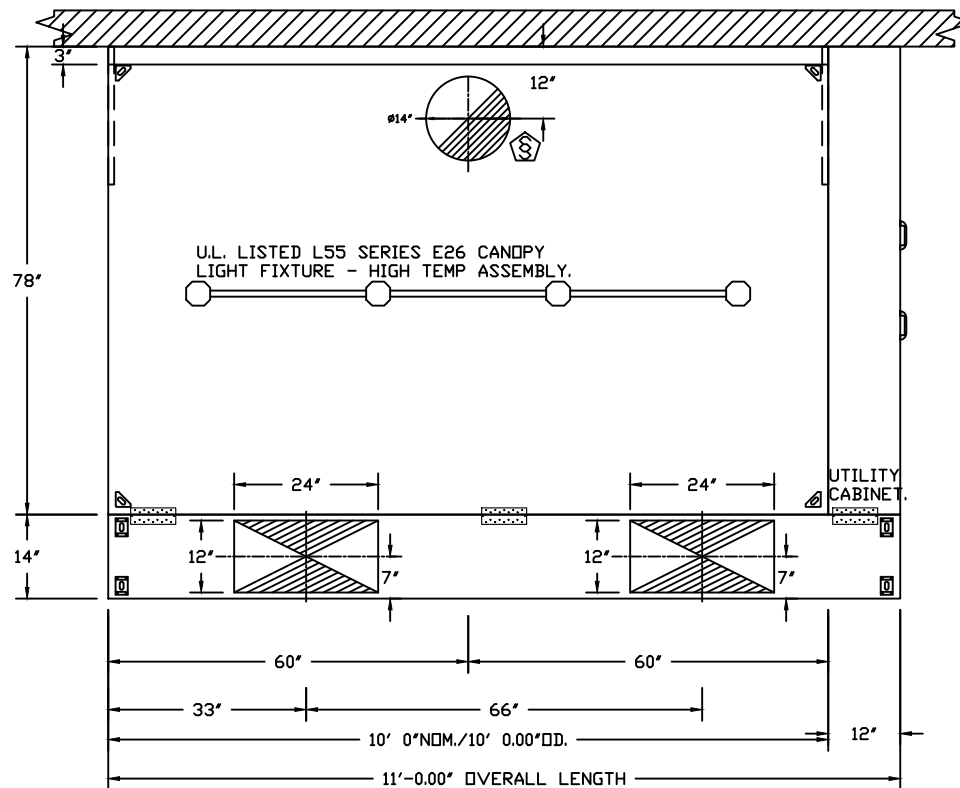


ASSEMBLY INSTRUCTIONS

HANGING ANGLE MUST BE SUPPORTED WITH 1/2" - 13 TPI GRADE 5 (MINIMUM) ALL-THREAD. SANDWICH HANGING ANGLES AND CEILING ANCHOR POINTS WITH 1/2" GRADE 5 (MINIMUM) STEEL FLAT WASHERS AND 1/2" - 13 TPI GRADE 5 (MINIMUM) HEX NUTS AS SHOWN. MUST USE DOUBLED HEX NUT CONFIGURATION BENEATH HOOD HANGING ANGLES AND ABOVE CEILING ANCHORS. MAINTAIN 1/4" OF EXPOSED THREADS BENEATH BOTTOM HEX NUT. TORQUE ALL HEX NUTS TO 57 FT-LBS.



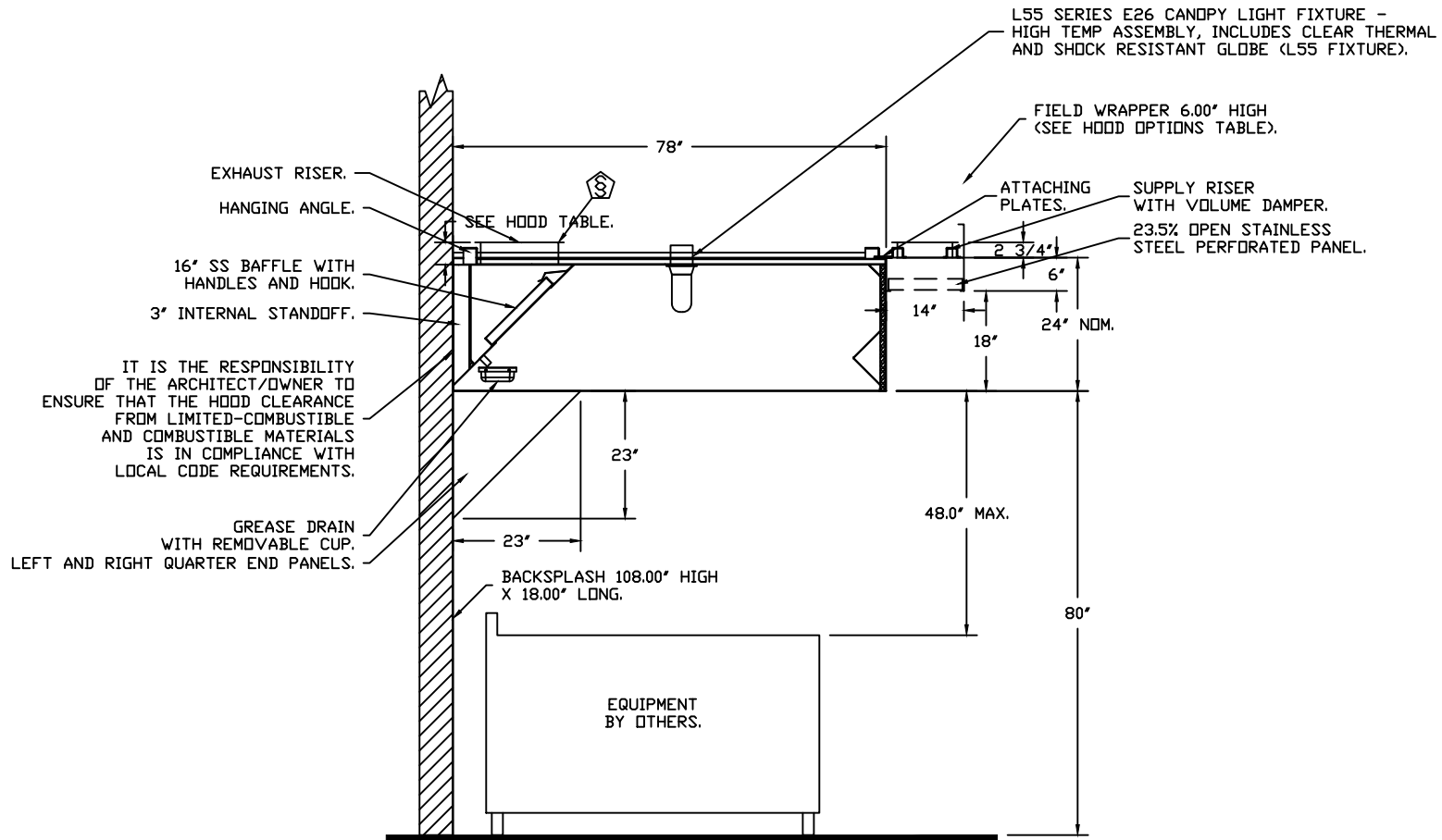
JOB LaRosa's (College Hill)	
LOCATION Cincinnati, OH, 45224	
DATE 4/20/2022	JOB # 5389523
DWG # 1	DRAWN BY jcirilli
REV.	SCALE 3/8" = 1'-0"



PLAN VIEW - HOOD #1 (HD 1)
 10' 0.00" LONG 7824EX-2-PSP-F



JOB LaRosa's (College Hill)	
LOCATION Cincinnati, OH, 45224	
DATE 4/20/2022	JOB # 5389523
DWG # 2	DRAWN BY jcirilli
REV.	SCALE 3/8" = 1'-0"



SECTION VIEW - MODEL 7824EX-2-PSP-F
HOOD - #1 (HD 1)



JOB LaRosa's (College Hill)	
LOCATION Cincinnati, OH, 45224	
DATE 4/20/2022	JOB # 5389523
DWG # 3	DRAWN BY jcirilli
REV.	SCALE 3/8" = 1'-0"

EXHAUST FAN INFORMATION - JOB#5389523

FAN UNIT NO	TAG	QTY	FAN UNIT MODEL #	MANUFACTURER	CFM	ESP	RPM	MOTOR ENCL	HP	BHP	PHASE	VOLT	FLA	DISCHARGE VELOCITY	WEIGHT (LBS)	SDNES
1	KEF 1	1	EADU85H	ECON-AIR	2000	1.200	1520	TEAD-ECM	1.000	0.6160	1	230	6.5	633 FPM	92	16.3

MUA FAN INFORMATION - JOB#5389523

FAN UNIT NO	TAG	QTY	FAN UNIT MODEL #	BLOWER	HOUSING	MIN CFM	DESIGN CFM	ESP	RPM	MOTOR ENCL	HP	BHP	PHASE	VOLT	FLA	MCA	MOCF	WEIGHT (LBS)	SDNES
2	KMUA	1	EA2-D.250-20D	20MF-2-MDD	A2-D.250	2000	3500	0.600	1431	DDP PREMIUM	3.000	1.6300	3	230	8.6	10.8A	15A	670	13.5

GAS FIRED MAKE-UP AIR UNIT(S)

FAN UNIT NO	TAG	INPUT BTUs	OUTPUT BTUs	TEMP RISE	REQUIRED INPUT GAS PRESSURE	GAS TYPE	BURNER EFFICIENCY(%)
2	KMUA	256159	235666	65°F	7 IN. W.C. - 14 IN. W.C.	NATURAL	92

FAN OPTIONS

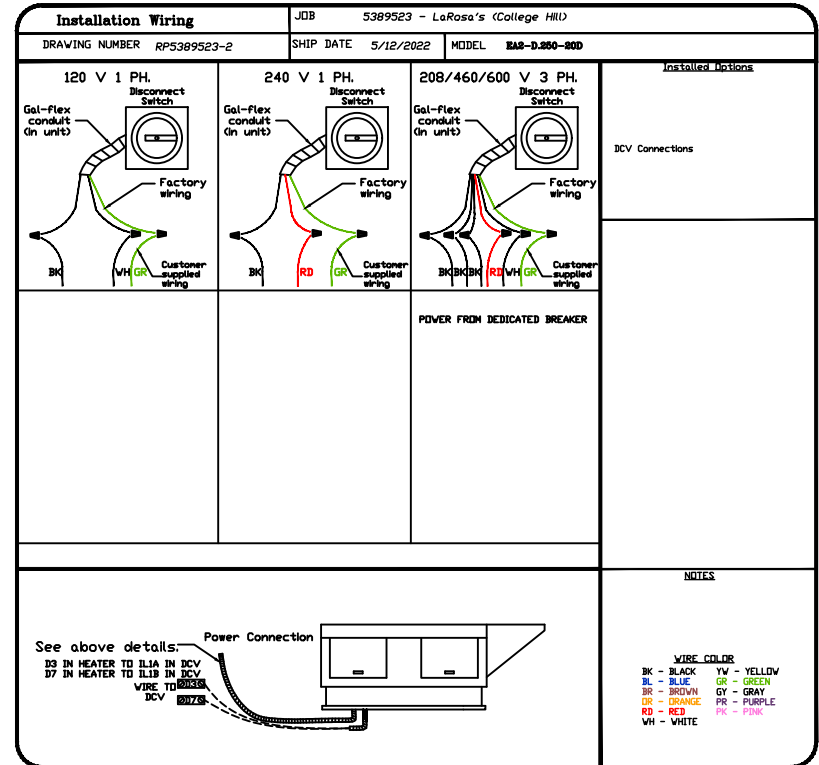
FAN UNIT NO	TAG	QTY	DESCRIPTION
1	KEF 1	1	GREASE BOX
		1	ECM WIRING PACKAGE - PWM SIGNAL FROM ECPM03 PREWIRE (TELCO MOTOR), CCW ROTATION
2	KMUA	1	2 YEAR PARTS WARRANTY
		1	INLET PRESSURE GAUGE, 0-35"
		1	MANIFOLD PRESSURE GAUGE, -5 TO 15" WC
		1	LOW FIRE START
		1	MOTORIZED BACKDRAFT DAMPER FOR A2-D HOUSING - MEETS AMCA CLASS 1A RATING
		1	SEPARATE 120V WIRING PACKAGE (REQUIRED) AND USED ONLY FOR DCV OR PREWIRE WITH VFD) - THREE PHASE ONLY
		1	SIZE 2 DIRECT FIRED HEATER LOW CFM PROFILE PACKAGE - USED ON HEATERS UNDER 2500 CFM
		1	2 YEAR PARTS WARRANTY

FAN ACCESSORIES

FAN UNIT NO	TAG	EXHAUST			SUPPLY			
		GREASE CUP	GRAVITY DAMPER	WALL MOUNT	SIDE DISCHARGE	GRAVITY DAMPER	MOTORIZED DAMPER	WALL MOUNT
1	KEF 1	YES						
2	KMUA				YES		YES	

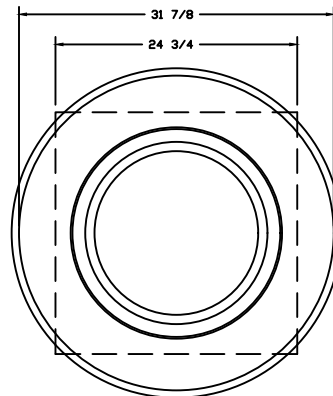
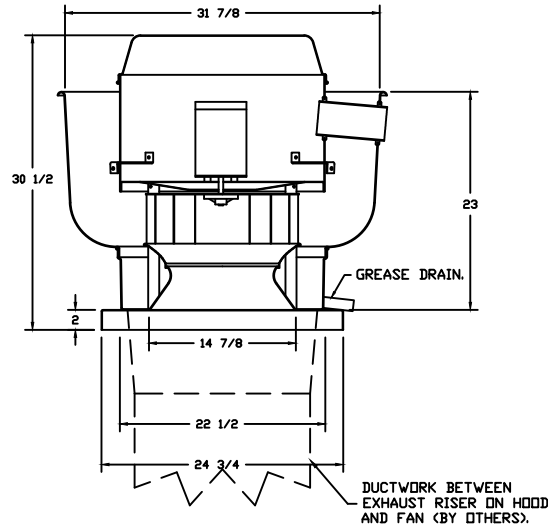
CURB ASSEMBLIES

NO	ON FAN	TAG	WEIGHT	ITEM	SIZE
1		EF1	22 LBS	EXHAUST ADAPTER	FROM 24.000"SQ TO 23.000"SQ X 9.000"H.
2	# 2	KMUA	76 LBS	CURB	31.000"W X 79.000"L X 16.000"H ALONG WIDTH, RIGHT INSULATED.



JOB LaRosa's (College Hill)	
LOCATION Cincinnati, OH, 45224	
DATE 4/20/2022	JOB # 5389523
DWG # 4	DRAWN BY jcrilli
REV.	SCALE 3/8" = 1'-0"

FAN #1 EADU85H - EXHAUST FAN (KEF 1)



TOP VIEW

FEATURES:

- DIRECT DRIVE CONSTRUCTION (NO BELTS/PULLEYS).
- ROOF MOUNTED FANS.
- RESTAURANT MODEL.
- UL705 AND UL762 AND ULC-S645
- VARIABLE SPEED CONTROL.
- INTERNAL WIRING.
- THERMAL OVERLOAD PROTECTION (SINGLE PHASE).
- HIGH HEAT OPERATION 300°F (149°C).
- GREASE CLASSIFICATION TESTING.
- NEMA 3R SAFETY DISCONNECT SWITCH.

NORMAL TEMPERATURE TEST

EXHAUST FAN MUST OPERATE CONTINUOUSLY WHILE EXHAUSTING AIR AT 300°F (149°C) UNTIL ALL FAN PARTS HAVE REACHED THERMAL EQUILIBRIUM, AND WITHOUT ANY DETERIORATING EFFECTS TO THE FAN WHICH WOULD CAUSE UNSAFE OPERATION.

ABNORMAL FLARE-UP TEST

EXHAUST FAN MUST OPERATE CONTINUOUSLY WHILE EXHAUSTING BURNING GREASE VAPORS AT 600°F (316°C) FOR A PERIOD OF 15 MINUTES WITHOUT THE FAN BECOMING DAMAGED TO ANY EXTENT THAT COULD CAUSE AN UNSAFE CONDITION.

OPTIONS

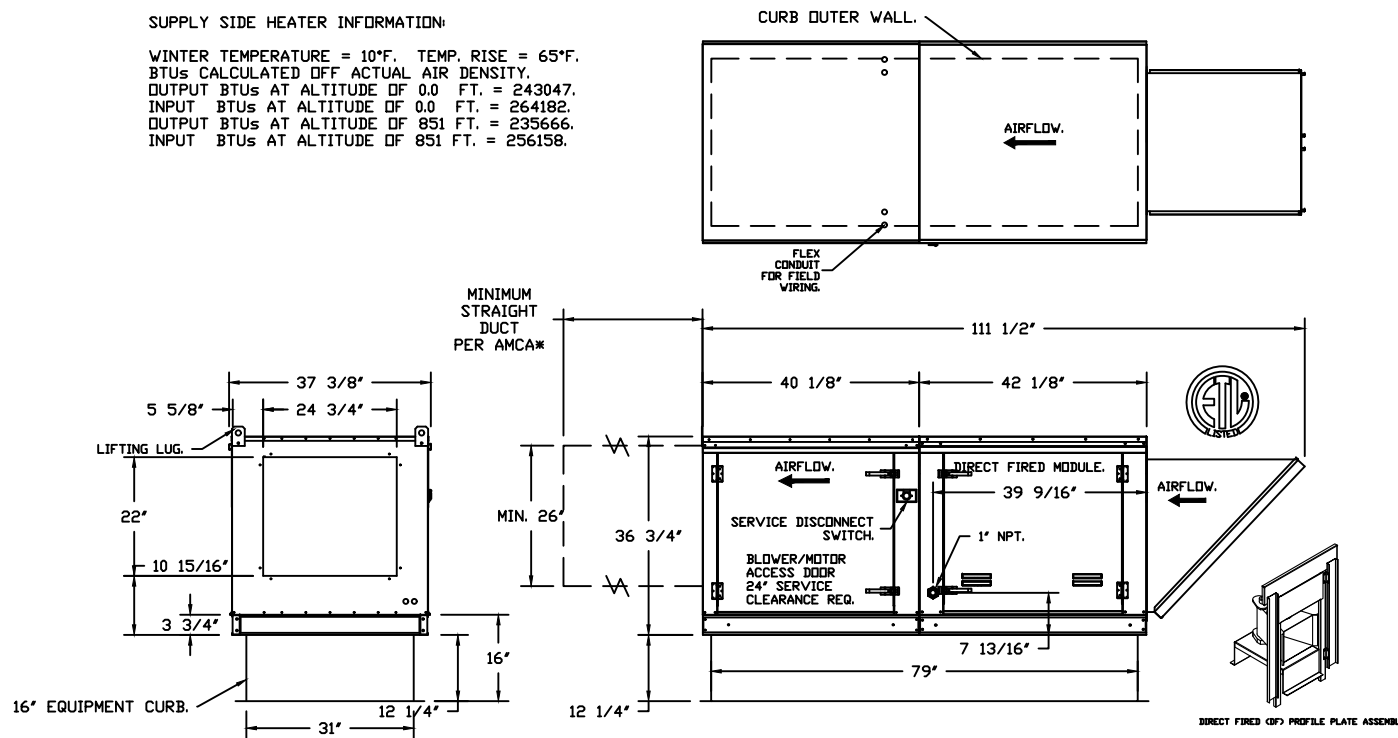
GREASE BOX.
ECM WIRING PACKAGE - PWM SIGNAL FROM ECPM03 PREWIRE (TELCO MOTOR), CCW ROTATION.
2 YEAR PARTS WARRANTY.



JOB LaRosa's (College Hill)	
LOCATION Cincinnati, OH, 45224	
DATE 4/20/2022	JOB # 5389523
DWG # 6	DRAWN BY jcirilli
REV.	SCALE 3/8" = 1'-0"

SUPPLY SIDE HEATER INFORMATION:

WINTER TEMPERATURE = 10°F. TEMP. RISE = 65°F.
 BTUs CALCULATED OFF ACTUAL AIR DENSITY.
 OUTPUT BTUs AT ALTITUDE OF 0.0 FT. = 243047.
 INPUT BTUs AT ALTITUDE OF 0.0 FT. = 264182.
 OUTPUT BTUs AT ALTITUDE OF 851 FT. = 235666.
 INPUT BTUs AT ALTITUDE OF 851 FT. = 256158.



- FAN #2 EA2-D250-20D - HEATER (KMUA)
1. DIRECT GAS FIRED HEATED MAKE UP AIR UNIT WITH 20" MIXED FLOW DIRECT DRIVE FAN.
 2. INTAKE HOOD WITH EZ FILTERS-LOW CFM.
 3. SIDE DISCHARGE - AIR FLOW RIGHT -> LEFT.
 4. GAS PRESSURE GAUGE, 0-35", 2.5" DIAMETER, 1/4" THREAD SIZE.
 5. GAS PRESSURE GAUGE, -5 TO +15 INCHES WC., 2.5" DIAMETER, 1/4" THREAD SIZE.
 6. LOW FIRE START. ALLOWS THE BURNER CIRCUIT TO ENERGIZE WHEN THE MODULATION CONTROL IS IN A LOW FIRE POSITION.
 7. MOTORIZED BACK DRAFT DAMPER 22.75" X 24" FOR SIZE 2 STANDARD & MODULAR HEATER UNITS W/EXTENDED SHAFT, STANDARD GALVANIZED CONSTRUCTION, 3/4" REAR FLANGE, LOW LEAKAGE, LF120S ACTUATOR INCLUDED.
 8. SEPARATE 120VAC WIRING PACKAGE FOR MAKE-UP AIR UNITS. OPTION MUST BE SELECTED WHEN MOUNTING VFD IN PREWIRE PANEL DR WITH DCV PACKAGE. PROVIDES SEPARATE 120VAC INPUT TO SUPPLY FAN. THIS 120V SIGNAL MUST BE RUN BY ELECTRICIAN FROM DCV TO MUA SWITCH.
 9. PROFILE PLATE CONFIGURATION FOR SIZE 2 DIRECT FIRED UNIT FOR LOW CFM APPLICATIONS.
 10. HINGED DOUBLE WALL INSULATED DOOR ASSEMBLY (BURNER/BLOWER SECTION).
 11. 2 YEAR PARTS WARRANTY

*NOTE: SUPPLY DUCT MUST BE INSTALLED TO MEET SMACNA STANDARDS. A MINIMUM STRAIGHT DUCT LENGTH MUST BE MAINTAINED DOWNSTREAM OF UNIT DISCHARGE AS OUTLINED IN AMCA PUBLICATION 201. WHEN USING RECTANGULAR DUCTWORK, ELBOWS MUST BE RADIUS THROAT, RADIUS BACK WITH TURNING VANES. FLEXIBLE DUCTWORK AND SQUARE THROAT/SQUARE BACK ELBOWS SHOULD NOT BE USED. ANY TRANSITION AND/OR TURNS IN THE DUCTWORK WILL CAUSE SYSTEM EFFECT. SYSTEM EFFECT WILL DRASTICALLY INCREASE STATIC PRESSURE AND REDUCE AIRFLOW. DO NOT RELY ON UNIT TO SUPPORT DUCT IN ANY WAY. FAILURE TO PROPERLY SIZE DUCTWORK MAY CAUSE SYSTEM EFFECTS AND REDUCE PERFORMANCE OF THE EQUIPMENT. SUGGESTED STRAIGHT DUCT SIZE IS 26" x 26".







JOB LaRosa's (College Hill)	
LOCATION Cincinnati, OH, 45224	
DATE 4/20/2022	JOB # 5389523
DWG # 6	DRAWN BY jcirilli
REV.	SCALE 3/8" = 1'-0"

