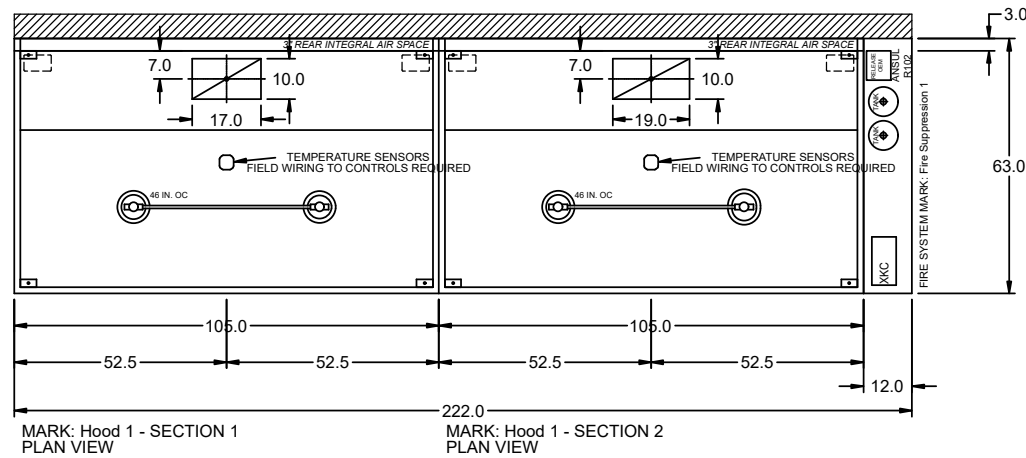


HOOD INFORMATION																	
HOOD NO.	MARK	MODEL	HOOD DIMENSIONS (IN.)			HOOD CONSTR.	COOKING LOAD / DUTY RATING	TOTAL CFM	EXHAUST COLLAR(S)				SUPPLY		TOTAL WEIGHT LBS.	SECTION LOCATION	
			LENGTH	WIDTH	HEIGHT				WIDTH	LENGTH	DIA.	CFM	S.P.	MUA CFM			AC CFM
1	HOOD 1	XXEW-105-S	105	63	24	300 SS 100%	MEDIUM	1800	10	17		1800	0.504			308.246	LEFT
2	HOOD 1	XXEW-105-S	105	63	24	300 SS 100%	HEAVY	2000	10	19		2000	0.553			308.246	RIGHT

HOOD INFORMATION													
HOOD NO.	MARK	LIGHTING DETAILS			GREASE FILTRATION DETAILS				UTILITY CABINET(S)				
		FIXTURE TYPE BULB / LAMP INFO	QTY	FOOT CANDLES	TYPE / MODEL MATERIAL	QTY	SIZE (IN.) L H	LOCATION	FIRE SYSTEM		CONTROLS		
									TYPE	SIZE	MODEL	INTERFACE	
1	HOOD 1	ROUND LED	2	63.44	X-TRACTOR STAINLESS STEEL	4	16 20					TOUCHSCREEN	
2	HOOD 1	ROUND LED	2	63.44	X-TRACTOR STAINLESS STEEL	4	16 20	RIGHT	ANSUL R102	6	XKC		

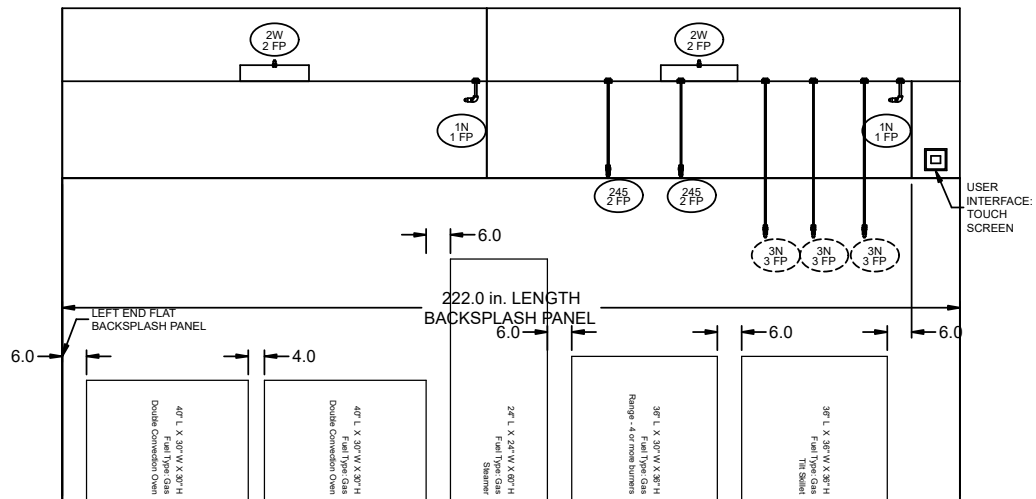
**HOOD OPTIONS**

UL 710 LISTED W/ OUT EXHAUST FIRE DAMPER - UL #R25625  
 BACK INTEGRAL AIR SPACE - 3 IN WIDE  
 18 IN HIGH CEILING ENCLOSURES - FRONT LEFT RIGHT - FIELD INSTALLED  
 CONTINUOUS CAPTURE  
 FACTORY MOUNTED EXHAUST COLLAR(S)  
 EXHAUST AIR BALANCING BAFFLE(S) - (EABB)  
 FILTER REMOVAL TOOL INCLUDED - QTY 1  
 BACKSPLASH 80.00 IN HIGH 222.00 IN LONG  
 LEFT SIDESPLASH 122.00 IN HIGH 18.00 IN LONG  
 PERFORMANCE ENHANCING LIP (PEL) TECHNOLOGY  
 STANDING SEAM CONSTRUCTION FOR SUPERIOR STRENGTH



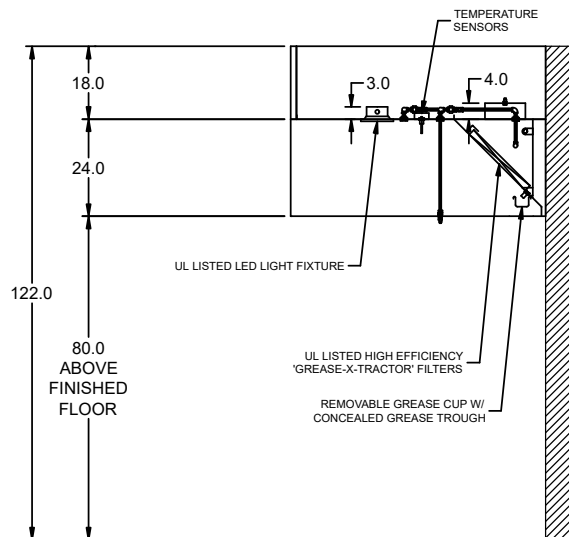
MARK: Hood 1 - SECTION 1  
PLAN VIEW

MARK: Hood 1 - SECTION 2  
PLAN VIEW

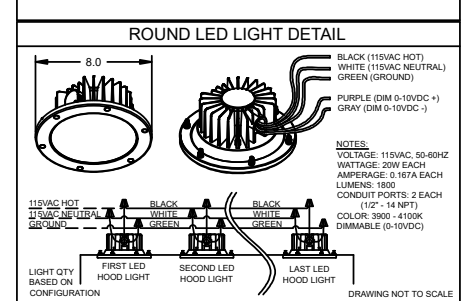
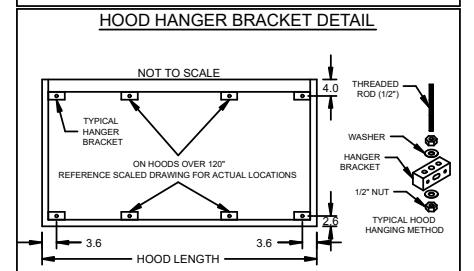
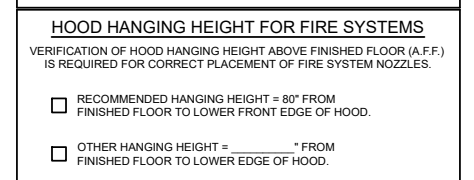
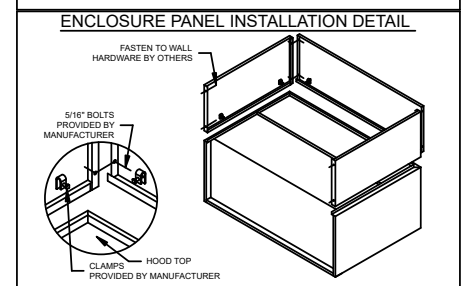
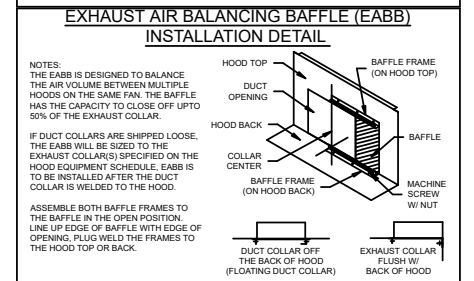
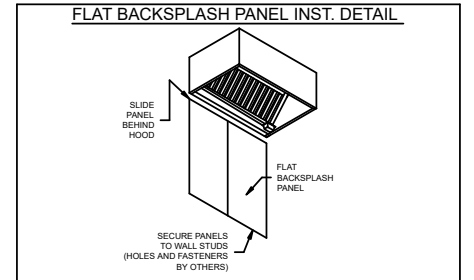


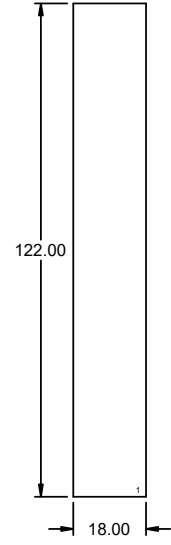
MARK: Hood 1 - SECTION 1  
ELEVATION VIEW

MARK: Hood 1 - SECTION 2  
ELEVATION VIEW

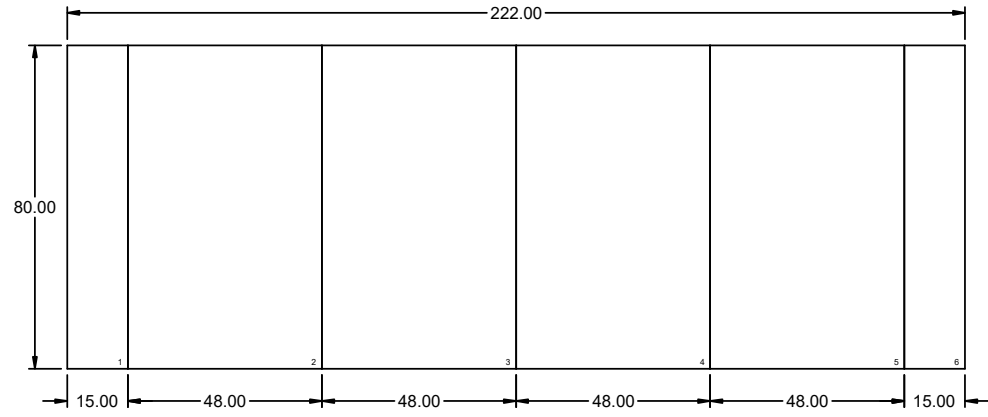


MARK: Hood 1 (LAST HOOD IN ROW)  
SECTION VIEW





LEFT SIDE SPLASH



BACK SPLASH

**FIRE SYSTEM INFORMATION**

MARK	MODEL	LOCATION	FLOW POINTS		SUPPLY LINE	DETECTION	MARK(S) PROTECTED BY FIRE SYSTEM
			HOODS	PCU			
FIRE SUPPRESSION 1	ANSUL R-102 WET CHEMICAL	CABINET – RIGHT END OF HOOD 1	19 UTILIZED 22 AVAILABLE		CONTINUOUS	FUSIBLE LINK	HOOD 1 SECTION 1 HOOD 1 SECTION 2

**FIRE SYSTEM OPTIONS AND ACCESSORIES**

- FULL INSTALLATION (INCLUDES PRE-PIPED HOOD(S) WITH DETECTION AND FACTORY COORDINATED INSTALL)
- CHROME SLEEVES FOR FACTORY PROVIDED APPLIANCES DROPS - INCLUDED
- METAL BLOW-OFF CAPS - INCLUDED
- GAS VALVE - INCLUDED - MECHANICAL SHUTOFF VALVE, 1.5", (ANSUL) - PART# ANSULMECHSHUTOFFVALVE150
- HOOD SUPPRESSION TANK - INCLUDED - 6 GAL. - [(2) 3.0 TANK(S)]
- REMOTE PULL STATION - STANDARD - FIELD INSTALLATION AT SINGLE POINT OF EGRESS

**ANSUL R102 (WET CHEMICAL) FIRE PROTECTION SYSTEM - MODEL FSSC**

**CONTROL PANEL**

**NOT TO SCALE**

**NOTES:**

WET CHEMICAL FIRE PROTECTION SYSTEM TO BE ANSUL R-102, DESIGNED IN COMPLIANCE WITH UL 300 REQUIREMENTS.

- VERIFICATION OF ALL COOKING EQUIPMENT MAKE, MODEL AND LOCATION REQUIRED FOR ALL FIRE PROTECTION SYSTEMS.
- ALL FIRE SYSTEM PIPING IS STANDARDLY TO THE RIGHT END OF THE HOOD UNLESS A WALL IS LOCATED ON THE RIGHT END.
- ANSUL AUTOMAN RELEASE TO BE LOCATED WITHIN 60" OF HOOD.

THE BASIC FIRE SYSTEM WILL INCLUDE THE FOLLOWING:

- GAS SHUT-OFF VALVE, IF REQUIRED, TO BE SUPPLIED BY MANUFACTURER (UP TO 2" DIAMETER AS STANDARD), AND INSTALLED BY A LICENSED PLUMBER.
- MICRO SWITCH TO BE SUPPLIED BY MANUFACTURER FOR CONNECTION TO, BUT NOT LIMITED TO, BUILDING ALARM SYSTEM(S), EXHAUST AND SUPPLY FANS AND ELECTRICAL POWER SHUT DOWN. FIELD WIRING AND CONNECTIONS TO BE PERFORMED BY A LICENSED ELECTRICIAN.

THE BASIC FIRE SYSTEM DOES NOT INCLUDE THE FOLLOWING:

- FULL DUMP TEST OTHER THAN WHAT IS SPECIFIED PER THE INSTALLATION MANUAL, OR TO SATISFY A STATE OR LOCAL CODE. PERMIT AND TESTING FEES ARE NOT INCLUDED UNLESS NOTED UNDER THE EQUIPMENT SCHEDULE FOR THE FIRE SYSTEM.
- MORE THAN TWO TRIPS TO THE JOBSITE OR SPECIAL TRANSPORTATION, OR OVERNIGHT LODGING REQUIREMENTS IN REMOTE AREAS. NORMAL TRAVEL DISTANCE IS FIRST 50 MI. (80.5 KM) FROM OFFICE.
- SPECIAL CLASSES OR ADDITIONAL LABOR FOR ACCESS TO SECURITY SENSITIVE AREAS
- INSTALLATION OF GAS SHUT-OFF VALVE.
- SPECIAL DRAWINGS REQUIRED TO SATISFY STATE OR LOCAL CODE. PLAN EXAMINATION FEES, PE OR PS APPROVAL STAMP.
- UNION LABOR, GOVERNMENT LABOR, OR PREVAILING WAGES REQUIRED FOR FINAL FIELD HOOK-UP.
- ANY AND ALL ELECTRICAL COMPONENTS/CONNECTIONS REQUIRED TO SHUT DOWN FANS, SHUT OFF DEVICE FOR ELECTRIC COOKING EQUIPMENT (SHUNT TRIP BREAKER), OR ACTIVATE AN ALARM SYSTEM, ETC.
- ANY DISMANTLING OR REASSEMBLY REQUIRED TO GAIN ACCESS TO THE FIRE SUPPRESSION PIPING LOCATED ON THE TOP OF THE HOOD.
- ROUGH-IN HIDDEN CONDUIT FOR REMOTE PULL STATION OR GAS VALVE (FLUSH MOUNTED PULL STATION).
- INSTALLATION OF MORE THAN (1) REMOTE PULL STATIONS OR DISTANCES GREATER THAN 20 FT (6.1M).
- PARTS OR LABOR REQUIRED TO CORRECT PIPING DUE TO COOKING EQUIPMENT CHANGES OR DEVIATION FROM PLANS, OR ANY CHARGES FOR MISSING OR ADDITIONAL PARTS OTHER THAN THOSE INDICATED ON THE FIRE SUPPRESSION DETAIL.

**WIRING DIAGRAMS W/DPDT MICRO SWITCH**

DPDT SWITCHES PROVIDED BY MANUFACTURER MAY BE WIRED PER TYPICAL EXAMPLES SHOWN. VERIFY WITH LOCAL CODES AND EQUIPMENT SUPPLIED AS THE CONNECTION NEEDED FOR YOUR INSTALLATION.

**CONNECTION TO BUILDINGS ALARM**

**CONNECTION TO COOKING EQUIPMENT SHUT DOWN**

**CONNECTION TO FAN SHUT DOWN**

**NOTES:**

1. \_\_\_\_\_ DENOTES FIELD INSTALLATION.
2. \_\_\_\_\_ DENOTES FACTORY INSTALLATION.
3. DO NOT USE BLACK WIRE OR SNAP-ACTION SWITCH IN NORMAL INSTALLATION. BLACK WIRE TO BE USED ONLY FOR EXTRANEOUS ALARM, LIGHT CIRCUITS, ETC.

**ACCUREX**

ACCUREX W/IA  
BRAD BORCHARDT  
BRAD.BORCHARDT@ACCUREX.COM  
(262)227-7865

PROJECT:  
12/19/2022

MARK:  
FIRE SUPPRESSION 1

MENOMINEE INDIAN HIGH SCHOOL, KESHENA, WI

CONTROL INFORMATION

MARK	ELECTRICAL CONTROL PACKAGE		USER INTERFACE		FANS CONTROLLED											
	MODEL	LOCATION	TYPE	LOCATION	FAN #	TYPE	FAN	FAN MARK	ZONE	CFM	MOTOR HP	MOTOR VOLT	CYCLE	MOTOR PHASE	MOTOR STARTER IN PANEL	VFD IN PANEL
CONTROLS 1	XKC-CV-S-21-2-1-0	RIGHT CABINET ON HOOD 1	FULL COLOR TOUCHSCREEN	CABINET - RIGHT CABINET ON HOOD 1	1	EXHAUST	E1	EXHAUST FAN BY OTHERS	1	1800	1	208	60	3	YES	NO
					2	EXHAUST	E2	EXHAUST FAN BY OTHERS	1	2000	1	208	60	3	YES	NO
					3	SUPPLY	S1	SUPPLY FAN BY OTHERS	1	3800	3	208	60	3	NO	NO

CONTROL FEATURES

- HOOD LIGHT CONTROL
- TEMP SENSORS (FACTORY INSTALLED) - QTY. 2
- DRY FIRE CONTACTS - QTY. 2
- LIGHTS OFF DURING FIRE
- EXHAUST MAX DURING FIRE
- SUPPLY OFF DURING FIRE

**CABINET DETAILS**

DRAWING NOT TO SCALE

KITCHEN HOOD

CONTROLS

**USER INTERFACE DETAILS**

MOUNTING TYPE  
FACTORY MOUNTED:  
UTILITY CABINET - RIGHT END OF HOOD

USER INTERFACE CONTROL  
FANS AND LIGHTS

INTERFACE CABLE LENGTH  
7FT (FACTORY PROVIDED)

**MOUNTING LOCATION:**  
UTILITY CABINET ON HOOD  
(INNER CONTROL BOX: 12 X 20 X 6)

**NOTES:**  
1) WHEN CONTROLS ARE MOUNTED IN HOOD-MOUNTED OR WALL-MOUNTED UTILITY CABINET, FOR HOOD OR WALL CABINET DIMENSIONS SEE HOOD SUBMITTAL.  
2) MINIMUM OF 36" OF CLEARANCE RECOMMENDED IN FRONT OF CONTROL CABINET

DOC NUMBER: --- REV: ---

**CAUTION**  
UNIT MUST BE GROUNDED IN ACCORDANCE WITH N.E.C. POWER MUST BE OFF WHILE SERVICING.

**ATTENTION**  
L'APPAREIL DOIT ÊTRE MIS À LA TERRE CONFORMÉMENT AU CODE C.E. L'ALIMENTATION DOIT ÊTRE COUPÉE DURANT L'ENTRETIEN.

COMMERCIAL APPLIANCE OUTLET CENTER  
ELECTRICAL RATINGS: 110-240V, 1PHASE, 50-60HZ, 15A  
BASE FILE #E200616, ML FILE #E313951

THESE DRAWINGS SHALL NOT BE REMOVED FROM THIS EQUIPMENT. USE COPPER CONDUCTORS RATED TO 90°C UNLESS SPECIFIED. TORQUE CONTROL & GROUND BOLTS TO 8 LBS. IN. TORQUE POWER LUGS/SCREWS TO COMPONENT RATINGS LISTED. TORQUE CONTROL BOARD SCREW TERMINALS TO 3.5 LBS. IN. FIELD CONTROL WIRING RESISTANCE SHOULD NOT EXCEED 0.75 OHM. SEE IOM FOR ADDITIONAL INFORMATION, OR CALL FACTORY AT 1-800-371-8858.

NE PAS RETIRER CES DESSINS DE CET ÉQUIPEMENT SAUF INDICATION CONTRAIRE. UTILISER DES CONDUCTEURS EN CUIVRE CLASSÉS 90 °C. SERRER LES BORNES DE COMMANDE ET DE MISE À LA TERRE À 8 LB-PO. SERRER LES COSSÉS/VIS D'ALIMENTATION AUX COUPLES INDICUÉS POUR LE COMPOSANT. SERRER LES BORNES À VIS DE LA CARTE DE COMMANDE À 3.5 LB-PO. LA RÉSISTANCE DU CÂBLAGE DE COMMANDE LOCAL NE DOIT PAS DÉPASSER 0.75 OHM. POUR PLUS D'INFORMATION, CONSULTER LE MANUEL OU APPELER 1-800-371-8858.

WIRING DIAGRAM CODE: WDC#  
JOB NAME: MENOMINEE INDIAN HIGH SCHOOL, KESHENA, WI  
MODEL: XKC-CV-S-21-2-1-0  
SERIAL NUMBER: WDSN#  
MARK: CONTROLS 1

**POWER WIRING FOR KITCHEN CONTROLS**  
(WIRING TO BE DONE BY ELECTRICIAN)

**POWER WIRING FROM BREAKER PANEL DIRECT TO FANS**  
(WIRING TO BE DONE BY ELECTRICIAN)

**CONTROL WIRING FOR KITCHEN CONTROLS**  
(WIRING TO BE DONE BY ELECTRICIAN, IF NO CONTROLS CONTRACTOR. USE 18-22GA WIRE UNLESS SPECIFIED.)

**\*FIRE SYSTEM DRY CONTACT WIRING EXAMPLES**

SHUNT TRIP (BY OTHERS)  
WIRING EXAMPLE:

APPLIANCE CONTACTORS (BY OTHERS)  
WIRING EXAMPLE:

**ZONE CONFIGURATION**

ZONE #	ZONE	ROOM TEMP
1	Z1	PRESET

WIRING DIAGRAM CODE: WDC#  
JOB NAME: MENOMINEE INDIAN HIGH SCHOOL, KESHENA, WI  
MODEL: XKC-CV-S-21-2-1-0  
SERIAL NUMBER: WDSN#  
MARK: CONTROLS 1  
DOC NUMBER: --- REV: ---

**DEFAULT SETTINGS / PARAMÈTRES PAR DÉFAUT**

FACTORY SETTINGS  
TYPE: CV  
CONFIGURATION: STANDARD  
ZONES: 1  
HOODS: 2  
SUMPS: 0  
EXHAUST FANS: 2  
SUPPLY FANS: 1  
MB ROOM SENSOR: NO  
MB TEMP SENSORS: 2  
HIGH TEMP FAULT: NO  
FREEZE PROTECTION: YES  
GAS RESET: NO  
FAN PROVING: NO  
BMS: NONE

**ZONE SETTINGS**  
SEE ZONE CONFIGURATION IN TABLE ON LEFT

**HOOD SETTINGS**  
SEE HOOD CONFIGURATION IN TABLE ON LEFT

**EXHAUST FAN SETTINGS**  
SEE FAN CONFIGURATION IN TABLE ON LEFT

**SUPPLY FAN SETTINGS**  
SEE FAN CONFIGURATION IN TABLE ON LEFT

**SENSOR SETTINGS**  
SEE HOOD CONFIGURATION IN TABLE ON LEFT

**USER INTERFACE SETTINGS (MB)**  
FAN & LIGHT BUTTONS: SHOW BOTH (SEPERATE)

**USER INTERFACE SETTINGS (HCB)**  
NA

**GENERAL SETTINGS**  
TIME ZONE: CENTRAL DAYLIGHT (DEFAULT)

**FIRE FAULT SETTINGS**  
EXHAUST DURING FIRE: MAX  
SUPPLY DURING FIRE: OFF  
LIGHTS DURING FIRE: OFF

**BMS SETTINGS**  
NA

**HOOD CONFIGURATION**

HOOD #	HOOD	HOOD MARK	ZONE	EXHAUST	SUPPLY	MB-TEMP SENSORS	HCB
1	H1	HOOD 1 SECTION 1	Z1	E1	S1	TS1	NO
2	H2	HOOD 1 SECTION 2	Z1	E2	S1	TS2	NO

**FAN CONFIGURATION**

FAN #	TYPE	FAN	FAN MARK	ZONE	MIN CFM	MAX CFM	MODBUS VFD	VFD ADDRESS	MIN FREQ	MAX FREQ	MIN VDC	MAX VDC
1	EXHAUST	E1	EXHAUST FAN BY OTHERS	Z1	-	1800	NO	-	-	-	-	10.0
2	EXHAUST	E2	EXHAUST FAN BY OTHERS	Z1	-	2000	NO	-	-	-	-	10.0
3	SUPPLY	S1	SUPPLY FAN BY OTHERS	Z1	-	3800	NO	-	-	-	-	10.0