

**H.V.A.C. SPECIFICATIONS:**

**15010 MECHANICAL REQUIREMENTS:**

DO ALL WORK IN COMPLIANCE WITH ALL APPLICABLE CODES, LAWS AND ORDINANCES, THE STANDARD BUILDING CODE AND THE REGULATIONS OF THE LOCAL UTILITY COMPANIES. OBTAIN AND PAY FOR ANY AND ALL REQUIRED PERMITS, INSPECTIONS, CERTIFICATES OF INSPECTIONS.

COOPERATE WITH OTHER TRADES AND CONTRACTORS AT JOB. PERFORM WORK IN SUCH MANNER AND AT SUCH TIMES AS NOT TO DELAY WORK OF OTHER TRADES.

OBTAIN MANUFACTURER'S DATA ON ALL EQUIPMENT, THE DIMENSIONS OF WHICH MAY AFFECT INSTALLATION. USE THIS DATA TO COORDINATE PROPER SERVICE CHARACTERISTICS, ENTRY LOCATIONS, ETC., AND TO INSURE MINIMUM CLEARANCES ARE MAINTAINED.

WORKMAN SHALL BE EXPERIENCED IN THEIR RESPECTIVE TRADE. WORKMANSHIP OF INSTALLED WORK SHALL BE FIRST CLASS AND WILL BE SO JUDGED. SUBSTANDARD WORK SHALL BE REMOVED AND REPLACED AT CONTRACTOR'S EXPENSE.

CONTRACTOR SHALL AND DOES HEREBY WARRANT ALL MATERIALS AND EQUIPMENT FURNISHED UNDER THIS SECTION TO BE FREE FROM DEFECTS AND TO FUNCTION OR OPERATE SATISFACTORILY FOR ONE YEAR AFTER FINAL ACCEPTANCE OF THE WORK, AND THAT ANY ITEMS NOT MEETING THIS REQUIREMENT WILL BE MADE GOOD BY HIM WITHOUT ANY COST TO THE OWNER.

PROVIDE ONLY NEW, STANDARD FIRST-GRADE MATERIALS THROUGHOUT, CONFORMING TO STANDARDS ESTABLISHED BY UNDERWRITER LABORATORIES INC., AND SO MARKED AND LABELED, TOGETHER WITH MANUFACTURER'S BRAND OR TRADEMARK. ALL LIKE ITEMS SHALL BE OF ONE MANUFACTURER.

ALL WORK SHALL BE EXECUTED IN A MANNER THAT SHALL PRESENT A NEAT APPEARANCE UPON COMPLETION. CARE SHALL BE EXERCISED THAT ALL ITEMS ARE PLUMB, STRAIGHT AND LEVEL.

UPON COMPLETION OF WORK, ALL SYSTEMS SHALL BE TESTED, AND SHALL BE SHOWN TO BE IN PERFECT WORKING CONDITION IN ACCORDANCE WITH THE INTENT OF THE DRAWINGS.

ANY WALLS, CEILINGS, EQUIPMENT, ETC., DAMAGED BY THE CONTRACTOR IN CONSTRUCTION OF THIS PROJECT SHALL BE REPAIRED, RESTORED AND/OR REPLACED BY THE CONTRACTOR TO ITS ORIGINAL CONDITION, OR TO PERFORM ITS INTENDED FUNCTION, AT NO ADDITIONAL COST TO OWNER.

**15055 PIPING:**

PIPING SHALL BE NEW AND IN GOOD CONDITION. ALL PIPING SHALL CONFORM TO ALL APPLICABLE STATE, COUNTY AND LOCAL CODES.

PIPING SHALL BE INSTALLED PARALLEL TO BUILDING LINES.

PIPING SHALL BE COORDINATED WITH OTHER TRADES PRIOR TO INSTALLATION. OFFSETS AS REQUIRED TO COORDINATE WITH STRUCTURE AND OTHER TRADES SHALL BE MADE AT NO ADDITIONAL COST.

PIPING SHALL BE TESTED IN ACCORDANCE WITH INDUSTRY ACCEPTED METHODS. LEAKS SHALL BE REPAIRED AND ANY LOST REFRIGERANT SHALL BE REPLACED AT NO ADDITIONAL COST.

DIELECTRIC UNIONS SHALL BE INSTALLED IN ALL COPPER AND FERROUS PIPING CONNECTIONS.

**15891 DUCTWORK:**

ALL DUCTWORK MATERIALS AND INSTALLATION SHALL CONFORM TO APPLICABLE STATE, COUNTY AND LOCAL CODES. DUCTWORK SHALL BE ALL NEW AND IN GOOD CONDITION.

DUCT DIMENSIONS NOTED ARE INSIDE DIMENSIONS AND DO NOT INCLUDE INSULATION OR LINER.

DUCTWORK SHALL BE INSTALLED TO AVOID CONFLICT WITH OTHER TRADES. ANY OFFSETS REQUIRED SHALL BE INSTALLED AT NO ADDITIONAL COST.

FABRICATE DUCTWORK FROM SHEET METAL. DUCT SHALL BE INSULATED WITH 3" DUCT WRAP INSULATION. DUCTWORK SHALL BE INSTALLED IN ACCORDANCE WITH SMACNA LOW PRESSURE DUCTWORK STANDARDS.

**15990 TEST AND BALANCE:**

TEST AND BALANCE ALL AIR SYSTEMS IN ACCORDANCE WITH AABC AND/OR NEBB REQUIREMENTS. ALL EQUIPMENT USED FOR TESTING SHALL BE IN PROPER WORKING ORDER.

THE CONTRACTOR SHALL REGULATE AND ADJUST ALL SPLITTERS, DEFLECTORS AND DAMPERS SO THAT THE INLET OR OUTLET SHALL DELIVER OR REMOVE THE REQUIRED NUMBER OF CUBIC FEET OF AIR PER MINUTE (CFM) AT THE RESPECTIVE OPENINGS.

**15991 VIBRATION AND NOISE:**

PROVIDE VIBRATION ISOLATORS AND ACOUSTIC INSULATION AS REQUIRED TO ELIMINATE ANY OBJECTIONABLE NOISE OR VIBRATION.

**HVAC GENERAL NOTES**

- CONTRACTOR SHALL PROVIDE A COMPLETE AND FUNCTIONAL HEATING, VENTILATING, AND AIR CONDITIONING SYSTEM PER THESE CONTRACT DOCUMENTS.
- ALL MECHANICAL EQUIPMENT AND INSTALLATIONS SHALL CONFORM WITH THE REQUIREMENTS OF THE INTERNATIONAL MECHANICAL CODE, THE INTERNATIONAL BUILDING CODE, THE STATE ENERGY CODE, NFPA 90A, 96, 101 AND ALL APPLICABLE LOCAL CODES AND ORDINANCES.
- PRIOR TO PURCHASING ANY MATERIALS OR STARTING ANY WORK, CONTRACTOR SHALL FIELD VERIFY ALL EXISTING CONDITIONS, DUCTWORK SIZES AND LOCATIONS, EQUIPMENT, ETC. SHOWN ON THE DRAWINGS OR AFFECTING THIS WORK AND SHALL REPORT ANY DEVIATIONS TO THE ARCHITECT.
- SHOP DRAWINGS SHALL BE SUBMITTED TO AND APPROVED BY THE ARCHITECT PRIOR TO ORDERING, PURCHASING, OR FABRICATING ANY MECHANICAL EQUIPMENT. SHOP DRAWINGS SHALL INCLUDE: ALL EQUIPMENT SCHEDULED OR SPECIFIED ON THE DRAWINGS; DUCTWORK DRAWN TO 1/4" SCALE AND CONTROL WIRING SCHEMATICS APPROVED BY THE AIR CONDITIONING EQUIPMENT MANUFACTURER.
- CONTRACTOR SHALL COORDINATE ELECTRICAL CHARACTERISTICS AND REQUIREMENTS OF ALL MECHANICAL EQUIPMENT WITH ELECTRICAL DRAWINGS PRIOR TO ORDERING EQUIPMENT OR SUBMITTING SHOP DRAWINGS, AND SHALL FURNISH EQUIPMENT WIRED FOR THE VOLTAGES SHOWN THEREIN.
- ALL MECHANICAL EQUIPMENT REQUIRING ELECTRICAL POWER SHALL BE INSTALLED WITH DISCONNECT SWITCHES AT EACH PIECE OF EQUIPMENT. COORDINATE SWITCH TYPE WITH EQUIPMENT CHARACTERISTICS AND ELECTRICAL DRAWINGS.
- ALL REQUIRED CONTROL WIRING NOT SHOWN ON THE ELECTRICAL DRAWINGS SHALL BE INCLUDED AS PART OF THE MECHANICAL WORK. WIRING IN HVAC PLENUM SPACES SHALL BE INSTALLED ACCORDING TO CODE REQUIREMENTS.
- UNLESS NOTED OTHERWISE, STARTERS, SMOKE DETECTORS, TRANSFORMERS, CONTROLS AND CONTROL WIRING REQUIRED FOR ALL MECHANICAL SYSTEMS SHALL BE FURNISHED AND INSTALLED BY THE MECHANICAL CONTRACTOR.
- RTU'S SHALL BE INSTALLED WITH A SMOKE DETECTOR IN THE SUPPLY DUCTWORK. THE SMOKE DETECTOR SHALL BE WIRED TO STOP THE FAN UPON DETECTION OF SMOKE. SMOKE DETECTOR TROUBLE CONDITIONS SHALL BE INDICATED VISUALLY OR AUDIBLY IN A NORMALLY OCCUPIED AREA AND SHALL BE IDENTIFIED AS AIR DUCT DETECTOR TROUBLE.
- ALL MECHANICAL EQUIPMENT SHALL BE INSTALLED ACCORDING TO MANUFACTURER'S RECOMMENDATIONS.
- ALL MECHANICAL EQUIPMENT AND SYSTEMS SHALL BE GUARANTEED FOR A PERIOD OF ONE YEAR AFTER ACCEPTANCE BY OWNER.
- ALL HVAC COMPRESSORS SHALL HAVE EXTENDED 5-YEAR MANUFACTURER'S WARRANTY.
- DUCTWORK SHALL BE CONSTRUCTED OF GALVANIZED SHEET METAL AS RECOMMENDED IN SMACNA LOW PRESSURE DUCT CONSTRUCTION STANDARDS, LATEST EDITION. ALL JOINTS AND SEAMS SHALL BE SEALED WITH DUCT SEALER.
- ALL DUCTWORK SHALL BE SUPPORTED BY THE BUILDING STRUCTURE AND SHALL NOT REST ON CEILING TILES OR CEILING STRUCTURE. DUCT SUPPORTS AND ATTACHMENT TO STRUCTURE SHALL BE AS PER SMACNA STANDARDS.
- FLEXIBLE DUCTWORK SHALL BE ATCO #888 WITH BLACK POLYETHYLENE VAPOR BARRIER OR EQUAL, SAME SIZE AS DIFFUSER NECKS, MAXIMUM 6'-0" LONG. FLEXIBLE DUCTWORK SHALL BE INSTALLED AS STRAIGHT AS POSSIBLE, AND SHALL BE ROUTED AND SUPPORTED WITHOUT FORMING CRIMPS OR OTHER AIR FLOW RESTRICTIONS.
- ROUND AND FLEXIBLE DUCTWORK SHALL BE CONNECTED TO MAIN DUCTS WITH SPIN-IN FITTINGS WITH AIR EXTRACTORS AND BALANCING DAMPERS.
- CONDENSATE FROM ALL AIR CONDITIONING EQUIPMENT SHALL BE TRAPPED AND ROUTED TO THE NEAREST APPROVED LOCATION.
- CONTRACTOR SHALL COORDINATE THE INSTALLATION OF ALL MECHANICAL EQUIPMENT, DUCTWORK, ETC. TO FIT WITHIN THE SPACE ALLOWED BY THE ARCHITECTURAL AND STRUCTURAL CONDITIONS. CUTTING OR OTHERWISE ALTERING ANY STRUCTURAL MEMBERS SHALL NOT BE PERMITTED WITHOUT WRITTEN PERMISSION FROM THE ARCHITECT.
- ALL ROOFTOP MOUNTED EQUIPMENT SHALL BE INSTALLED LEVEL ON AND ANCHORED TO MINIMUM 12" HIGH INSULATED ROOF CURBS. CONTRACTOR SHALL COORDINATE ROOF SLOPE AND ACTUAL CURB HEIGHTS WITH ARCHITECTURAL DRAWINGS. ALL REFERENCES TO ROOF HEIGHTS REFER TO HEIGHTS ABOVE FINISHED ROOF SURFACE.
- LOCATIONS OF GRILLES, REGISTERS, & DIFFUSERS SHOWN ON THE DRAWINGS ARE APPROXIMATE. COORDINATE EXACT LOCATIONS WITH LIGHTS, CEILING GRID, ETC.
- DUCTWORK CONNECTING KITCHEN EXHAUST HOODS TO ROOFTOP EXHAUST/SUPPLY FANS SHALL BE CONSTRUCTED OF BLACK STEEL WITH WELDED SEAMS, 16 GAUGE. ALL DUCTWORK SHALL BE CONSTRUCTED AND INSTALLED ACCORDING TO REQUIREMENTS OF LOCAL CODE AUTHORITIES AND NFPA-96 REQUIREMENTS. INSTALL ACCESS DOORS AT EACH CHANGE OF DIRECTION.
- KITCHEN HOOD EXHAUST DUCTWORK SHALL BE INSULATED PER NFPA 96 AND LOCAL CODE REQUIREMENTS.
- MANUAL OVER-RIDE CONTROL (EMERGENCY SHUT-DOWN) SWITCHES FOR ALL HVAC UNITS SHALL BE LOCATED IN LOCKING COVER ADJACENT TO FIRE ALARM ANNUNCIATOR PANEL OR OTHER LOCATION APPROVED BY LOCAL AUTHORITY HAVING JURISDICTION.
- ROOFTOP HVAC UNITS SHALL BE INSTALLED SUCH THAT ROOF DECK IS COMPLETE AND CONTINUOUS UNDER BOTTOMS OF HVAC UNITS, AND SHALL BE CUT ONLY FOR UNIT SUPPLY AND RETURN OPENINGS. SPACE BETWEEN ROOF DECK AND BOTTOM OF ROOFTOP HVAC UNITS (INSIDE OF ROOF CURBS) SHALL BE FILLED WITH HIGH DENSITY ACOUSTICAL INSULATION.

**HVAC LEGEND**

SYMBOL	DESCRIPTION	ABBREVIATIONS
---	ABOVE FINISHED FLOOR	AFF
---	BRAKE HORSEPOWER	BHP
---	BRITISH THERMAL UNIT	BTU
	CEILING DIFFUSER	CD
	CEILING RETURN GRILLE	RAG
	DIFFUSER TYPE "A" BALANCED FOR 1900 CFM	A/1900
---	DRY BULB	DB
14x12	DUCT SIZE (RECTANGULAR)	---
8"	DUCT SIZE (ROUND)	---
---	ENERGY EFFICIENCY RATING	EER
---	ENTERING AIR TEMPERATURE	EAT
	EQUIPMENT NUMBER DESIGNATION (EF-1)	---
---	EXHAUST FAN	EF
---	EXTERNAL STATIC PRESSURE (IN. W.C.)	ESP
---	FLY FAN	FF
---	HORSEPOWER	HP
	HUMIDISTAT	H'STAT
---	INCHES WATER COLUMN	IN. W.C.
---	KILOWATT	KW
---	LEAVING AIR TEMPERATURE	LAT
	MANUAL VOLUME DAMPER	MVD
---	THOUSAND BTU/HOUR	MBH
	NEGATIVE PRESSURE DUCT OR OUTLET	---
---	OUTSIDE AIR	O/A
---	PACKAGED ROOFTOP UNIT	RTU
	POSITIVE PRESSURE DUCT OR OUTLET	---
	REMOTE TEMPERATURE SENSOR	---
---	RETURN AIR	R/A
---	SEASONAL ENERGY EFFICIENCY RATING	SEER
	SMOKE DETECTOR	SD
	SPIN IN FITTING W/ DAMPER & FLEX DUCTWORK	---
---	SUPPLY AIR	S/A
	THERMOSTAT	T'STAT
---	UNDERCUT (DOOR) 1"	U/C 1"
---	WET BULB	WB

**SEQUENCE OF OPERATION:**

**GENERAL**

SPACES SHALL BE CONDITIONED USING DX ROOFTOP AIR CONDITIONING UNITS (RTUS) THE OUTSIDE AIR REQUIRED FOR THE BUILDING IS TO BE PRECONDITIONED AND DELIVERED DIRECTLY TO THE SPACES THROUGH THE RTUS.

THE RTU CONTROLLER (RDC) SHALL PERFORM ALL CONTROL, SAFETY AND INTERLOCKS AS DESCRIBED IN THE SEQUENCE OF OPERATION. THE BMS SHALL MONITOR THE RTU DDC CONTROLLER VIA BMS PROTOCOL COMMUNICATION AND/OR COMBINATION OF DISCRETE INPUT/OUTPUT POINTS.

DURING OCCUPIED MODE THE SUPPLY FANS FOR THE RTUS SHALL BE ENERGIZED AND REMAIN ON TO MAINTAIN BUILDING PRESSURIZATION.

THE THERMOSTAT SHALL BE SET TO 75°F (ADJ.) COOLING AND 70°F (ADJ.) HEATING. THE HUMIDISTAT SHALL BE SET TO 60% RH (ADJ.).

**DX ROOFTOP UNITS (RTU-1&2)**

**OCCUPIED COOLING ONLY:**  
WHEN THE SPACE TEMPERATURE RISES ABOVE THE COOLING SETPOINT DEAD BAND AS DETECTED BY THE SPACE THERMOSTAT AND THE HUMIDISTAT IS SATISFIED, THE COMPRESSOR AND OUTDOOR FAN SHALL BE ENERGIZED TO MEET THE THERMOSTAT SETPOINT (USER ADJUSTABLE).

**OCCUPIED COOLING AND DEHUMIDIFICATION:**  
WHEN THE SPACE TEMPERATURE RISES ABOVE THE COOLING SETPOINT DEAD BAND AS DETECTED BY THE SPACE THERMOSTAT AND THE RELATIVE HUMIDITY RISES ABOVE THE RH SETPOINT AS DETERMINED BY THE HUMIDISTAT THE UNIT SHALL OPERATE IN SUBCOOLING MODE. HOT LIQUID REFRIGERANT FROM THE CONDENSER IS SHUNTED TO THE RE-HEAT COIL DOWNSTREAM OF THE DX COOLING COIL AS THE HOT LIQUID RE-HEATS THE AIR IT IS SUB-COOLED. THE PROCESS WILL CONTINUE UNTIL THE UNIT SATISFIES BOTH THE TEMPERATURE AND HUMIDITY SET POINTS OR CONVERTS TO COOLING ONLY OR DEHUMIDIFICATION ONLY.

**OCCUPIED DEHUMIDIFICATION ONLY:**  
WHEN THE SPACE TEMPERATURE IS SATISFIED AND THE RELATIVE HUMIDITY RISES ABOVE THE RH SETPOINT AS DETERMINED BY THE HUMIDISTAT THE UNIT SHALL OPERATE IN HOT GAS REHEAT MODE. GAS FROM THE COMPRESSOR MIXES WITH THE HOT LIQUID REFRIGERANT FROM THE CONDENSER AND IS SHUNTED THROUGH THE RE-HEAT COIL DOWNSTREAM OF THE DX COOLING COIL UNTIL THE HUMIDITY IS BELOW SET POINT.

**OCCUPIED HEATING:**  
THE MODULATING GAS HEAT SHALL ENERGIZE AS REQUIRED TO MAINTAIN TEMPERATURE SETPOINT.

**ECONOMIZER OPERATION:**  
BASED ON THE RTU INTERNAL CONTROLS, THE RDC SHALL VARY THE OUTSIDE AIR DAMPER POSITION, BASED ON CALL FOR COOLING IN THE SPACE.

**UNOCCUPIED MODE:**  
THE THERMOSTAT SHALL BE SET A MINIMUM OF 5°F ABOVE THE OCCUPIED COOLING SET POINT AND BELOW THE HEATING SET POINT. UNITS SHALL ONLY BE ENERGIZED ON A CALL FROM THE THERMOSTAT.

**ALARMS:**  
THE BMS SHALL MONITOR ALL SAFETIES ON THE REFRIGERANT SYSTEM AND THE HEATING SYSTEM THROUGH THE RDC COMMUNICATION PROTOCOL. ALL ABNORMAL CONDITIONS SHALL BE ALARMED AT THE BMS.

**FILTERS:** THE RDC SHALL MONITOR THE STATIC PRESSURE DROP ACROSS THE FILTER BANK AND ALARM ON HIGH STATIC PRESSURE DROP.

**FIRE/SMOKE CONTROL:** UPON ACTIVATION OF A DUCT SMOKE DETECTOR, THE BMS AND THE FIRE ALARM CONTROL PANEL SHALL RECEIVE AN ALARM.

**GENERAL ALARM:** ANY TROUBLE ALARM OR FAULT WITHIN THE UNIT ONBOARD CONTROLS WILL GENERATE A GENERAL ALARM TO THE BMS.

**EXHAUST (KEF-1&2, EF-1)**

EXHAUST FANS SHALL RUN CONTINUOUSLY DURING HOURS OF OPERATION. FANS SHALL BE OFF DURING UNOCCUPIED HOURS.

**SCHEDULE - ROOFTOP UNITS**

TAG	MODEL No.	TOTAL CFM	MIN. O.A. CFM	ESP	FAN HP	MBH TOT. COOL	MBH SEN. COOL	E.A.T. db/wb	L.A.T. db/wb	IEER	VOLTAGE /ø	MCA	MOCP	GAS INPUT MBH	GAS OUTPUT MBH	WEIGHT (LB)	ACCESSORIES
RTU-1	RN-020-8-0-GB04-349	3850	2460	0.75"	3	232.8	157.3	94/73	53/53	17.5	208/3	99	125	270	218.7	2500	1,2,3,4,5,6,7,8,9,10,11,12,13,14
RTU-2	RN-013-8-0-GB04-3F9	2050	1550	0.5"	2	150.9	79.7	98/74	51/51	17.5	208/3	68	80	195	156	1950	1,2,3,4,5,6,7,8,9,10,11,12,13,14

ACCESSORIES:  
 1. 18" HIGH, SOLID BOTTOM, INSULATED ROOF CURB FOR PITCHED ROOF, CONTRACTOR TO FIELD CUT SUPPLY AND RETURN OPENINGS AS REQUIRED.  
 2. NONFUSED DISCONNECT SWITCH AND FACTORY POWERED CONVENIENCE OUTLET.  
 3. SMOKE DETECTOR IN SUPPLY AIR DUCT OR AS REQUIRED BY LOCAL CODE / AMMENDMENTS.  
 4. ULTRA LOW LEAKAGE ECONOMIZER WITH BAROMETRIC RELIEF DAMPER, DIFFERENTIAL ENTHALPY CONTROLS AND FAULT DETECTION DIAGNOSTICS.  
 5. THERMOSTAT AND HUMIDISTAT WITH REMOTE TEMPERATURE SENSOR.  
 6. INTERLOCK WITH HOOD CONTROLS TO SHUT DOWN UNIT UPON ACTIVATION OF FIRE SUPPRESSION SYSTEM.  
 7. 4 STAGE COOLING, 6 ROW EVAPORATOR COIL AND MODULATING HOT GAS RE-HEAT OPTION AND STAINLESS STEEL DRAIN PAN.  
 8. R-410A REFRIGERANT AND TIME GUARD CONTROL CIRCUIT.  
 9. FAN SHALL RUN CONTINUOUSLY DURING HOURS OF OCCUPANCY.  
 10. STAINLESS STEEL GAS HEAT EXCHANGER WITH MODULATING CONTROL.  
 11. FACTORY MOUNTED AND WIRED CONDENSATE FLOAT SWITCH IN DRAIN PAN WIRED TO DE-ENERGIZE THE UNIT UPON DETECTION OF WATER.  
 12. PREMIUM EFFICIENCY MOTORS IN ACCORDANCE WITH NEMA MG-1.  
 13. TERMINAL STRIP FOR FIELD INSTALLED CONTROLS.  
 14. 2", R-13 DOUBLE WALL CONSTRUCTION WITH 2500 HOUR SALT SPRAY RESISTANT PAINT.  
 15. FACTORY INSTALLED HAIL GUARDS.

SELECTIONS ARE BASED ON PRODUCTS BY AAO.

**SCHEDULE - AIR BALANCE**

TAG	EXHAUST CFM	OUTSIDE AIR CFM
KEF-1	1994	-
KEF-2	1216	-
EF-1	300	-
RTU-1	-	2460
RTU-2	-	1550
TOTALS	3510	4010
BUILDING TOTALS		500 CFM POSITIVE

**SCHEDULE - FANS**

TAG	MODEL	DUTY	CFM	E.S.P.	MOTOR SIZE	RPM	DRIVE	ACCESSORIES
EF-1	G-095-D	EXHAUST	300	0.5"	1/8 HP	1550	DIRECT	1,2,3,4,5
KEF-1	CUE-140-VG	GREASE	1994	1.0"	1/3 HP	1517	DIRECT	3,6,7,8,9,10,11,12
KEF-2	CUE-120-VG	GREASE	1216	0.75"	1/2 HP	1415	DIRECT	3,6,7,8,9,10,11,13

ACCESSORIES:  
 1. 12" INSULATED ROOF CURB.  
 2. GRAVITY BACKDRAFT DAMPER.  
 3. DISCONNECT SWITCH.  
 4. WIRE FOR CONTINUOUS OPERATION DURING BUILDING OCCUPIED MODE.  
 5. BIRD SCREEN.  
 6. INTERLOCK WITH KITCHEN HOOD.  
 7. EXPLOSION-PROOF MOTOR.  
 8. NON-SPARKING CONSTRUCTION.  
 9. COATING ON AIR STREAM COMPONENTS.  
 10. GREASE BOX.  
 11. HINGED ACCESS KIT.  
 12. INSULATED AND VENTED 26" SQUARE ROOF CURB.  
 13. INSULATED AND VENTED 22" SQUARE ROOF CURB.  
 SELECTIONS ARE BASED ON PRODUCTS BY GREENHECK.  
 EQUAL PRODUCTS: PENN, COOK.

**SCHEDULE - AIR DISTRIBUTION**

TAG	SERIES	CFM	DUTY	NECK	SIZE	DAMPER	MATERIAL	DESCRIPTION
A	TMS-AA	SEE DWGS	SUPPLY	SEE DWGS	24x24	YES	ALUMINUM	1
B	PAS-AA	450	SUPPLY	12"	24x24	YES	ALUMINUM	2
C	300 FL	100	SUPPLY	6x6	8x8	YES	ALUMINUM	3
D	FL-10-HT	SEE DWGS	SUPPLY	8"	48"	YES	ALUMINUM	4
E	50F	SEE DWGS	RETURN	22x22	24x24	NO	ALUMINUM	5
F	50F	150	EXHAUST	6x6	8x8	YES	ALUMINUM	5

NOTES:  
 A. REFER TO ARCHITECTURAL DRAWINGS FOR TYPE OF CEILING AND/OR SUSPENSION SYSTEM.  
 B. FINISH SHALL BE OF THE TYPE AND COLOR SELECTED BY ARCHITECT. SUBMIT FINISH CHART WITH SHOP DRAWINGS.

DESCRIPTION:  
 1. LOWER FACE, HIGH PERFORMANCE, ROUND NECK, SQUARE DIFFUSER.  
 2. PERFORATED FACE, 3-WAY BLOW, ROUND NECK, SQUARE DIFFUSER.  
 3. DOUBLE DEFLECTION SUPPLY GRILLE. PROVIDE SQUARE TO ROUND NECK TRANSITION.  
 4. LINEAR SLOT DIFFUSER WITH ONE 1" SLOT. PROVIDE WITH RFI INSULATED PLENUM.  
 5. 1/2" x 1/2" x 1/2" EGGRATE RETURN / EXHAUST GRILLE.

SELECTIONS ARE BASED ON PRODUCTS BY TITUS.  
 EQUAL PRODUCTS: KRUEGER, CARNES, METAL-AIRE & PRICE.

**OUTSIDE AIR / EXHAUST VENTILATION COMPLIANCE**

UNIT NUMBER	AREA CLASSIFICATION	AREA (SQ. FT.)	NO. OF PEOPLE PER 1000 SQ. FT.	PEOPLE QUANTITY	AIRFLOW PER PERSON	AIRFLOW PER SQ. FT.	TOTAL OUTSIDE AIR REQUIRED (CFM)	OUTSIDE AIR PROVIDED (CFM)	EXHAUST AIR REQUIRED (CFM/SQ.FT.)	EXHAUST AIR REQUIRED (CFM)**	EXHAUST AIR PROVIDED (CFM)
RTU-2	DINING	665	70	46	7.5	0.18	469	-	-	-	-
	SERVING	380	-	5	7.5	0.18	106	-	-	-	-
EF-1	CORRIDOR	40	-	-	-	0.06	2	1550	-	-	-
RTU-1	RESTROOMS	225	-	-	-	-	-	-	280	300	-
	OFFICE	52	5	1	5	0.06	8	-	-	-	-
RTU-1	SERVING	245	-	4	7.5	0.18	74	-	-	-	-
	WASHING	90	-	2	7.5	0.18	31	-	-	-	-
KEF-1&2	STORAGE	385	-	-	-	0.12	46	2460	-	-	-
TOTALS	KITCHEN	665	-	-	-	-	-	-	0.7	466	3210
TOTALS							736	4010		746	3510

NOTES:  
 1. CALCULATIONS BASED ON INTERNATIONAL MECHANICAL CODE TABLE 403.3.1.  
 2. PER TABLE 403.3.1 FOOTNOTE 'E' 70 CFM PER FIXTURE.

ARCHITECT OF RECORD:

THOMAS E. MORGAN, JR.  
ARCHITECT

423 FISCHER TRAIL  
ELLIJAY, GEORGIA 30540

SEAL:



3450 Acworth Due West Road  
Building 100, Suite 120  
Kennesaw, Georgia 30144  
P. 770-917-9122  
F. 770-917-9470  
www.mrpdesign.com

RELEASED FOR CONSTRUCTION

ISSUES / REVISIONS:

7/26/2024 PERMIT SET  
12/22/2024 REVIEW COMMENTS

DRAWN BY: JWE

CHKD BY: JWE

**WHATABURGER**  
 JESSIE JEWEL PKWY  
 GAINESVILLE, GA 30501

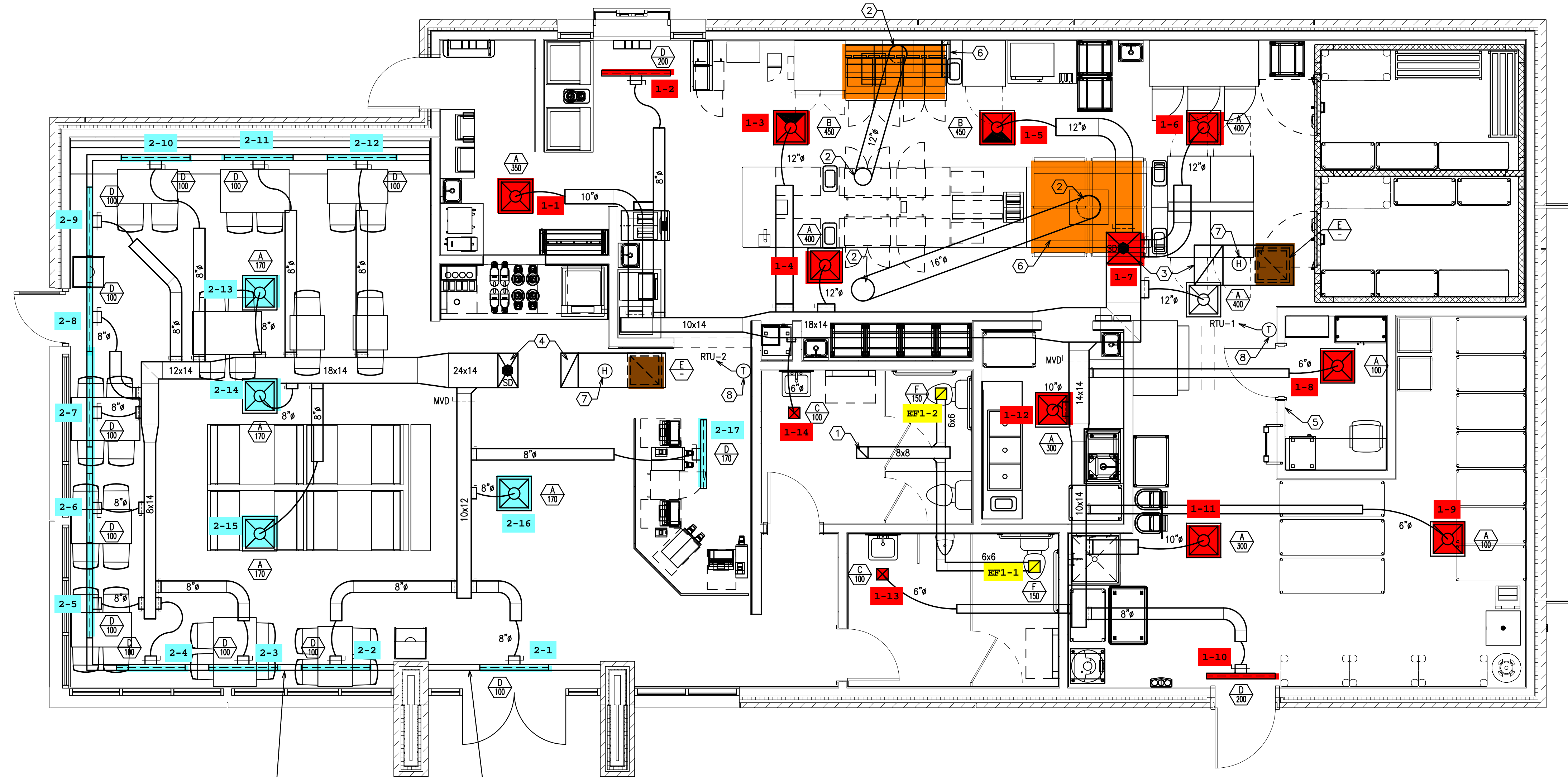


SHEET TITLE:

NOTES, SCHEDULES, LEGEND - HVAC

PROJECT NO: 23008

THESE PLANS ARE THE PROPERTY OF MRP DESIGN GROUP, INC. AND ARE SUBJECT TO FEDERAL COPYRIGHT LAWS. ANY USE OF SAME WITHOUT THE EXPRESS WRITTEN PERMISSION OF MRP DESIGN GROUP, INC. IS STRICTLY PROHIBITED.



PROVIDE CONTINUOUS 1" SLOT AROUND PERIMETER OF DINING CEILING WITH 4" ACTIVE SECTIONS AND INSULATED PLENUMS. BLANK OFF INACTIVE SECTIONS. REFER TO ARCHITECTURAL CEILING PLAN AND DETAILS.

**1 FLOOR PLAN - HVAC**  
M1.1 SCALE: 1/4"=1'-0"

- KEYNOTES (THIS DRAWING)**
- ① 8x8 EXHAUST DUCT UP TO ROOF MOUNTED EXHAUST FAN (EF-1). TRANSITION TO FAN CONNECTION SIZE. MAINTAIN MINIMUM 10' SEPARATION BETWEEN FAN AND ANY OUTSIDE AIR INTAKES.
  - ② MINIMUM 16 GA. STEEL GREASE EXHAUST DUCT. ROUTE FULL SIZE FROM TRANSITION AT HOOD COLLAR TO EXHAUST FAN AT ROOF. WRAP ENTIRE LENGTH OF DUCT WITH 3M FIREMASTER DUCT WRAP OR EQUIVALENT. PROVIDE CLEANOUTS AT TRANSITIONS AND AS REQUIRED. MAINTAIN MINIMUM 10' BETWEEN FAN AND OUTSIDE AIR INTAKES.
  - ③ 24x22 SUPPLY DUCT AND 28x20 RETURN DUCT UP TO RTU-1. TRANSITION TO UNIT CONNECTION SIZE AND PROVIDE FLEXIBLE CONNECTION.
  - ④ 24x14 SUPPLY DUCT AND 24x12 RETURN DUCT UP TO RTU-2. TRANSITION TO UNIT CONNECTION SIZE AND PROVIDE FLEXIBLE CONNECTION.
  - ⑤ EMERSON SITE SUPERVISOR DISPLAY AND CONTROLLER PANEL RECESSED AND FLUSH MOUNTED IN WALL AT 5' AFF TO CENTER.
  - ⑥ KITCHEN HOODS, ANSUL FIRE SUPPRESSION SYSTEM AND HOOD CONTROLS SHALL BE OWNER FURNISHED AND INSTALLED BY CONTRACTOR.
  - ⑦ MOUNT HUMIDISTAT IN R/A DUCT.
  - ⑧ MOUNT REMOTE TEMPERATURE SENSOR 84" A.F.F. MINIMUM.

ARCHITECT OF RECORD:

THOMAS E. MORGAN, JR.  
ARCHITECT

423 FISCHER TRAIL  
ELLIJAY, GEORGIA 30540

SEAL:



3450 Acworth Due West Road  
Building 100, Suite 120  
Kennesaw, Georgia 30144  
P. 770-917-9172  
F. 770-917-9470  
www.mrpdesign.com

RELEASED FOR CONSTRUCTION

ISSUES / REVISIONS:  
7/26/2024 PERMIT SET  
12/22/24 REVIEW COMMENTS

DRAWN BY: JWE  
CHKD BY: JWE

**WHATABURGER**  
JESSIE JEWEL PKWY  
GAINESVILLE, GA 30501



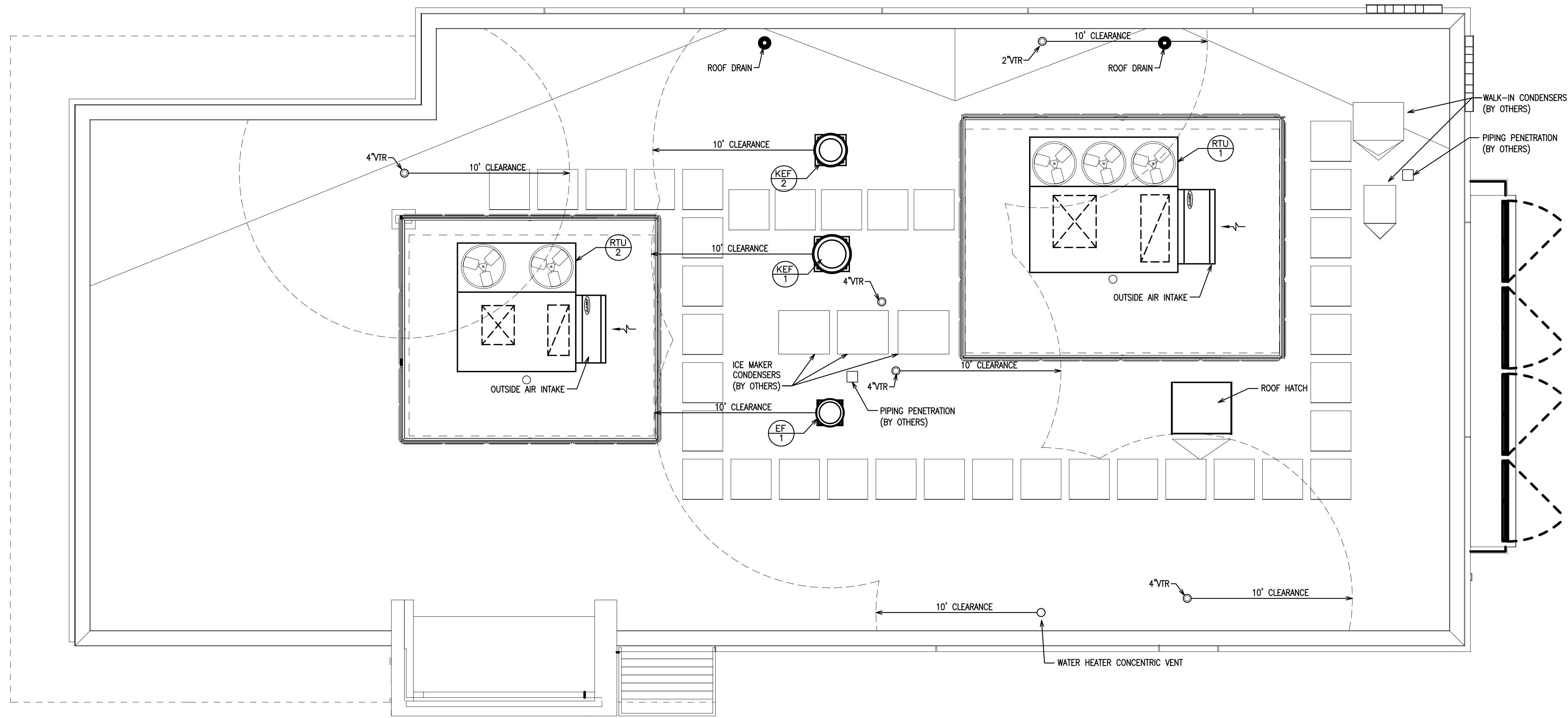
SHEET TITLE:

FLOOR PLAN - HVAC

PROJECT NO: 23008

M1.1

THESE PLANS ARE THE PROPERTY OF MRP DESIGN GROUP, INC. AND ARE SUBJECT TO FEDERAL COPYRIGHT LAWS. ANY USE OF SAME WITHOUT THE EXPRESS WRITTEN PERMISSION OF MRP DESIGN GROUP, INC. IS STRICTLY PROHIBITED.



1 ROOF PLAN - HVAC  
 M1.2 SCALE: 1/4"=1'-0"

ARCHITECT OF RECORD:

THOMAS E. MORGAN, JR.  
ARCHITECT

423 FISCHER TRAIL  
ELLIJAY, GEORGIA 30540

SEAL:



3450 Acworth Due West Road  
 Building 100, Suite 120  
 Kennesaw, Georgia 30144  
 P. 770-917-9172  
 F. 770-917-9470  
 www.mrpdesign.com

RELEASED FOR CONSTRUCTION

ISSUES / REVISIONS:

DATE	PERMIT SET
7/26/2024	PERMIT SET
12/22/2024	REVIEW COMMENTS

DRAWN BY: JWE

CHKD BY: JWE

**WHATABURGER**  
 JESSIE JEWEL PKWY  
 GAINESVILLE, GA 30501

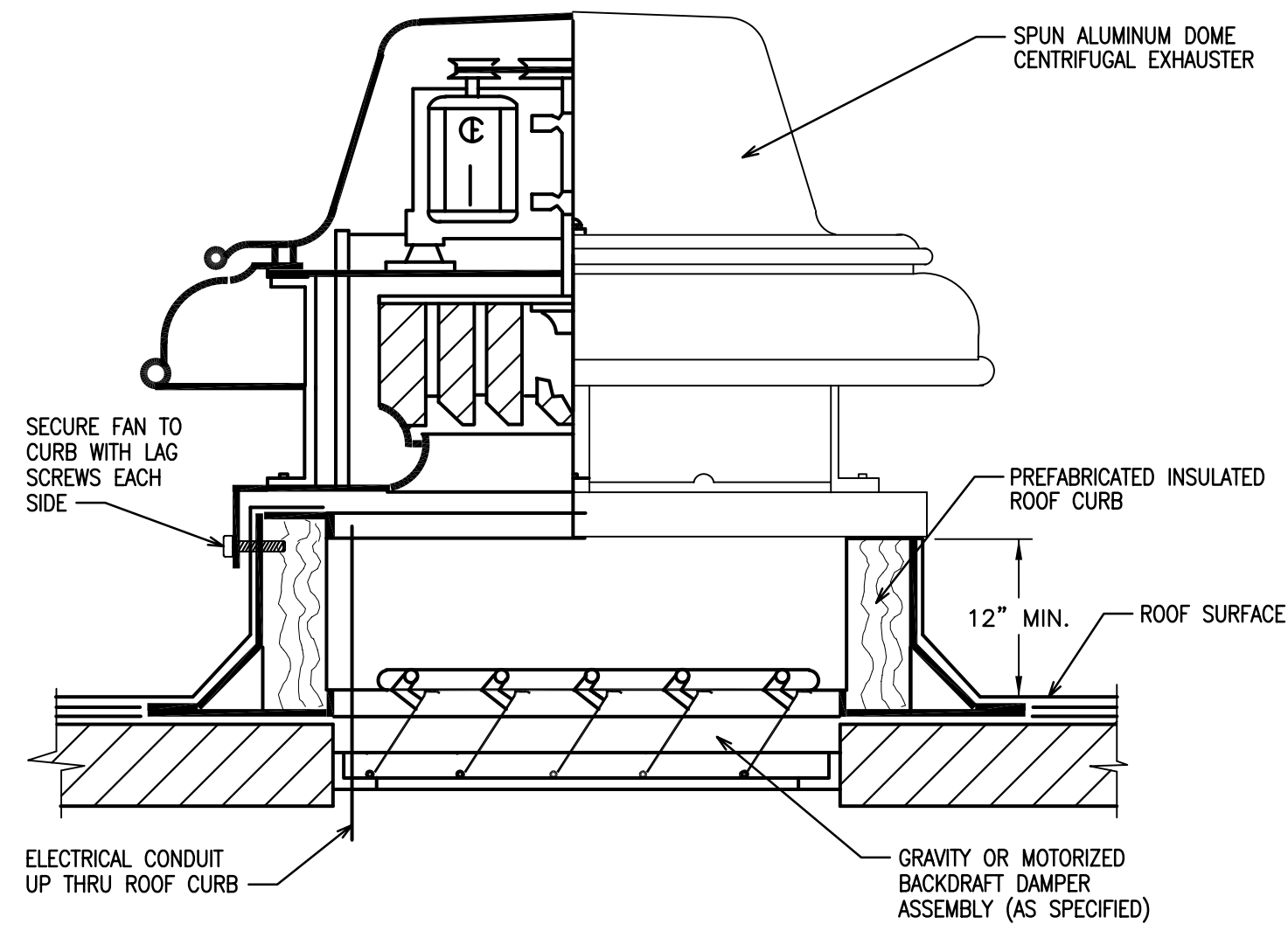


SHEET TITLE:

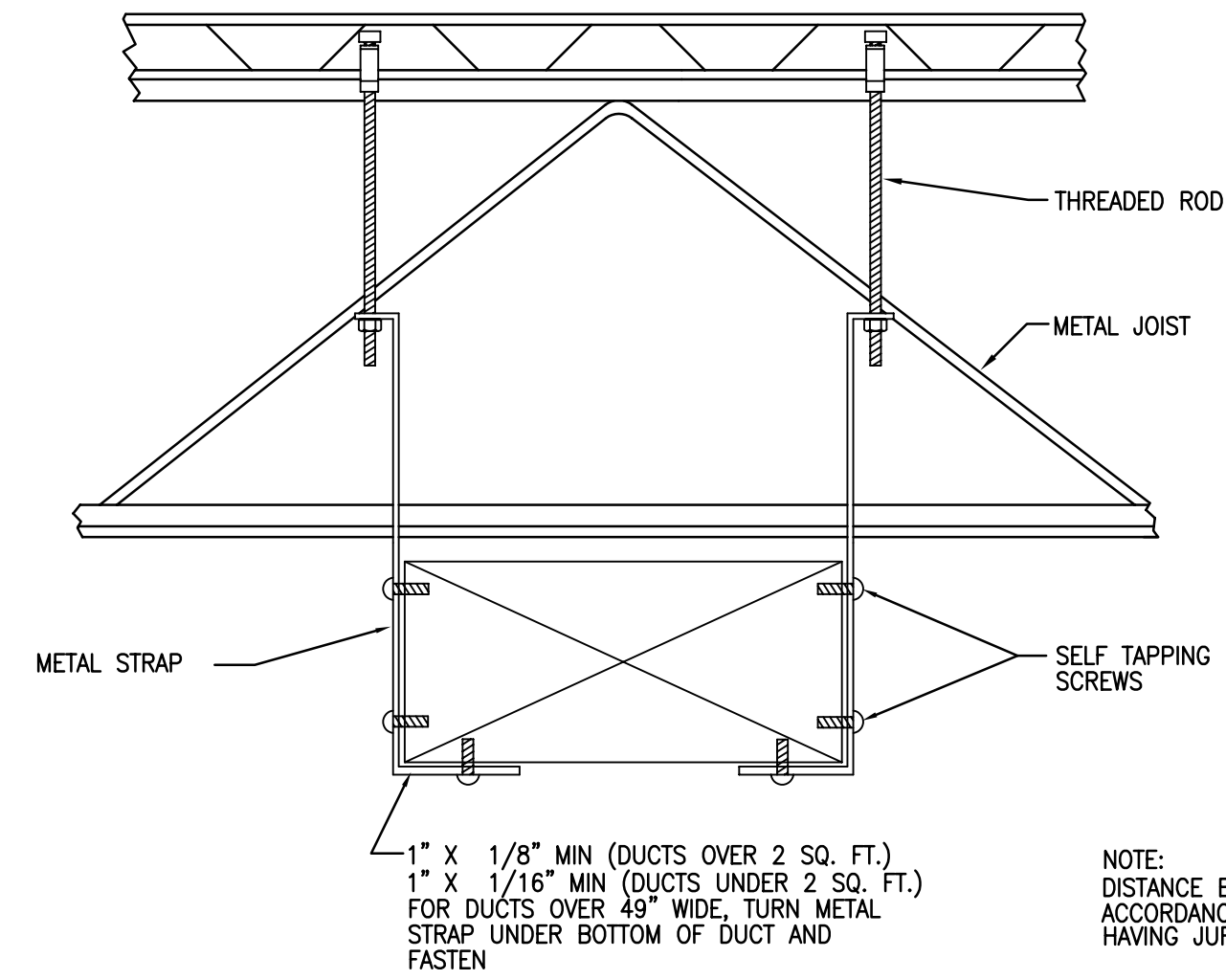
ROOF PLAN - HVAC

PROJECT NO: 23008

M1.2



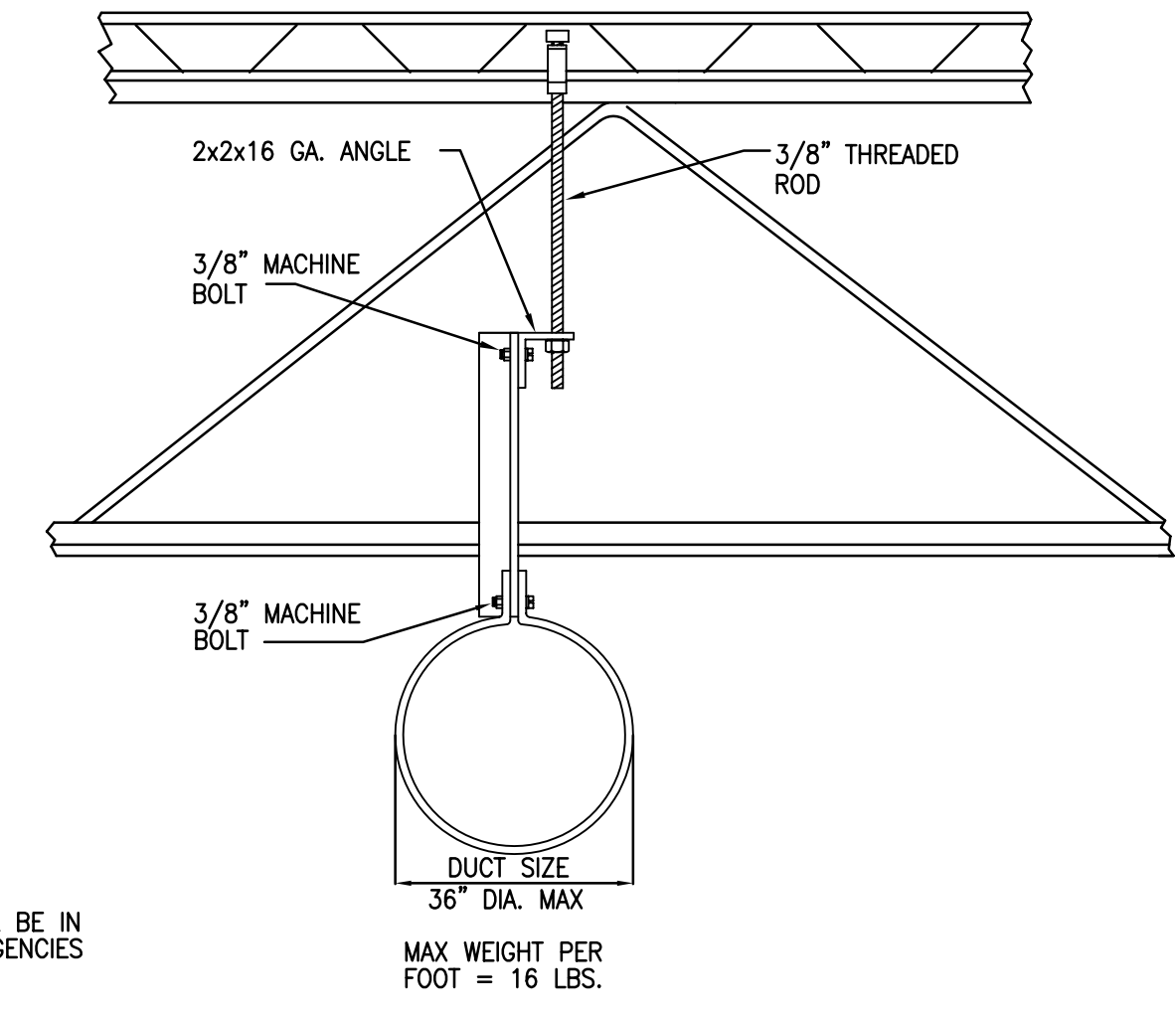
**ROOF-MOUNTED CENTRIFUGAL EXHAUST FAN**  
SCHEMATIC - NO SCALE



**DUCTWORK SUPPORT DETAIL**

NOT TO SCALE

MAX. SIDE INCHES	MIN. GALV. SHT. GAUGE	ALUMINUM MIN. B & S GAUGE
THROUGH 12	26 (0.022 IN.)	24 (0.020 IN.)
13 THROUGH 30	24 (0.028 IN.)	22 (0.025 IN.)
31 THROUGH 54	22 (0.034 IN.)	20 (0.032 IN.)
55 THROUGH 84	20 (0.040 IN.)	18 (0.040 IN.)
OVER 84	18 (0.052 IN.)	16 (0.051 IN.)

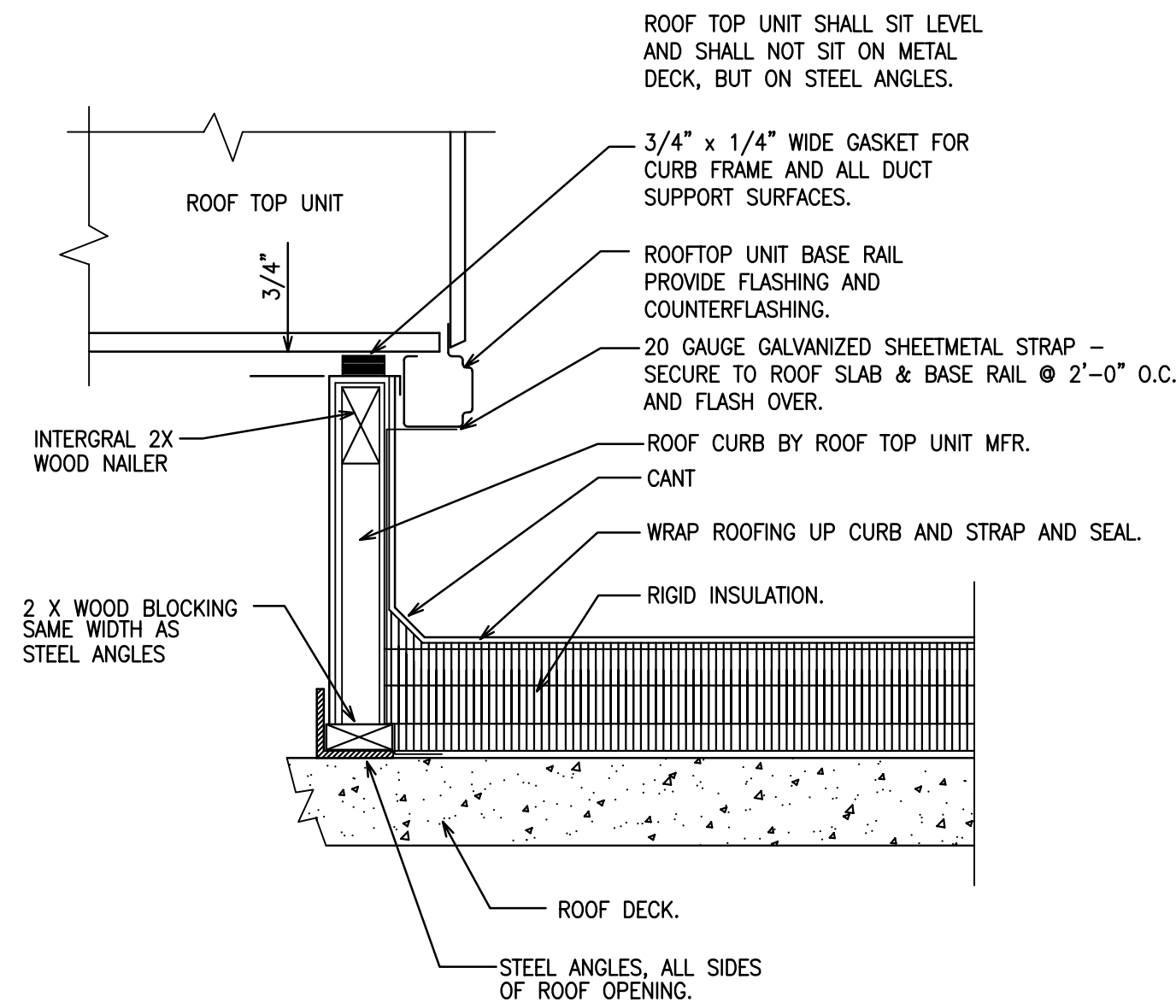


**ROUND DUCT SUPPORT DETAIL**

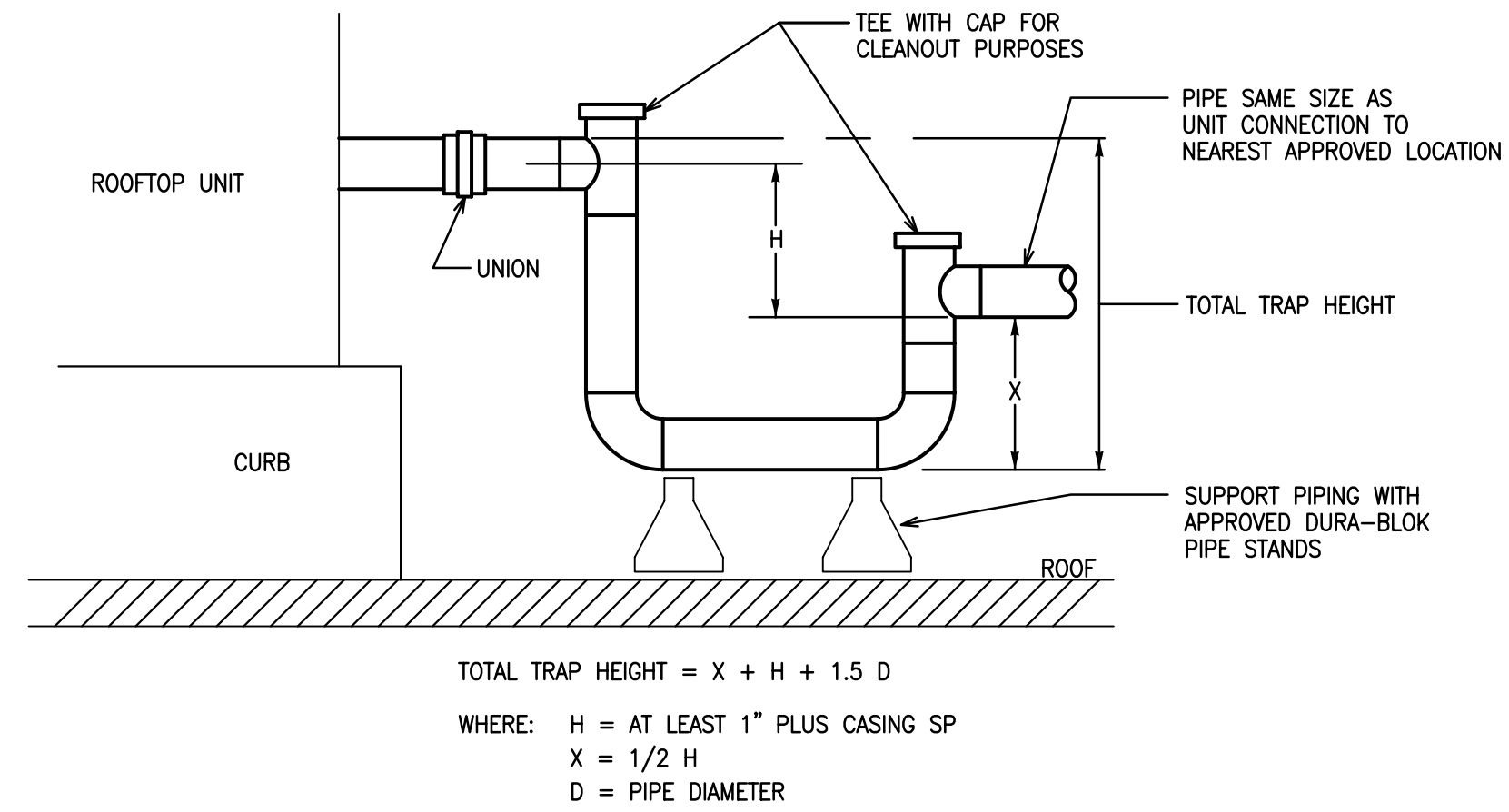
NOT TO SCALE

SPIRAL SEAM DUCT STEEL MIN. GALV. SHT. GAUGE	DUCT STEEL MIN. GALV. SHT. GAUGE	FITTINGS STEEL MIN. GALV. SHT. GAUGE
THROUGH 12	26 (0.022 IN.)	26 (0.022 IN.)
13 THROUGH 18	26 (0.022 IN.)	24 (0.028 IN.)
19 THROUGH 28	24 (0.028 IN.)	22 (0.034 IN.)
29 THROUGH 36	22 (0.034 IN.)	20 (0.040 IN.)
37 THROUGH 52	20 (0.040 IN.)	18 (0.052 IN.)

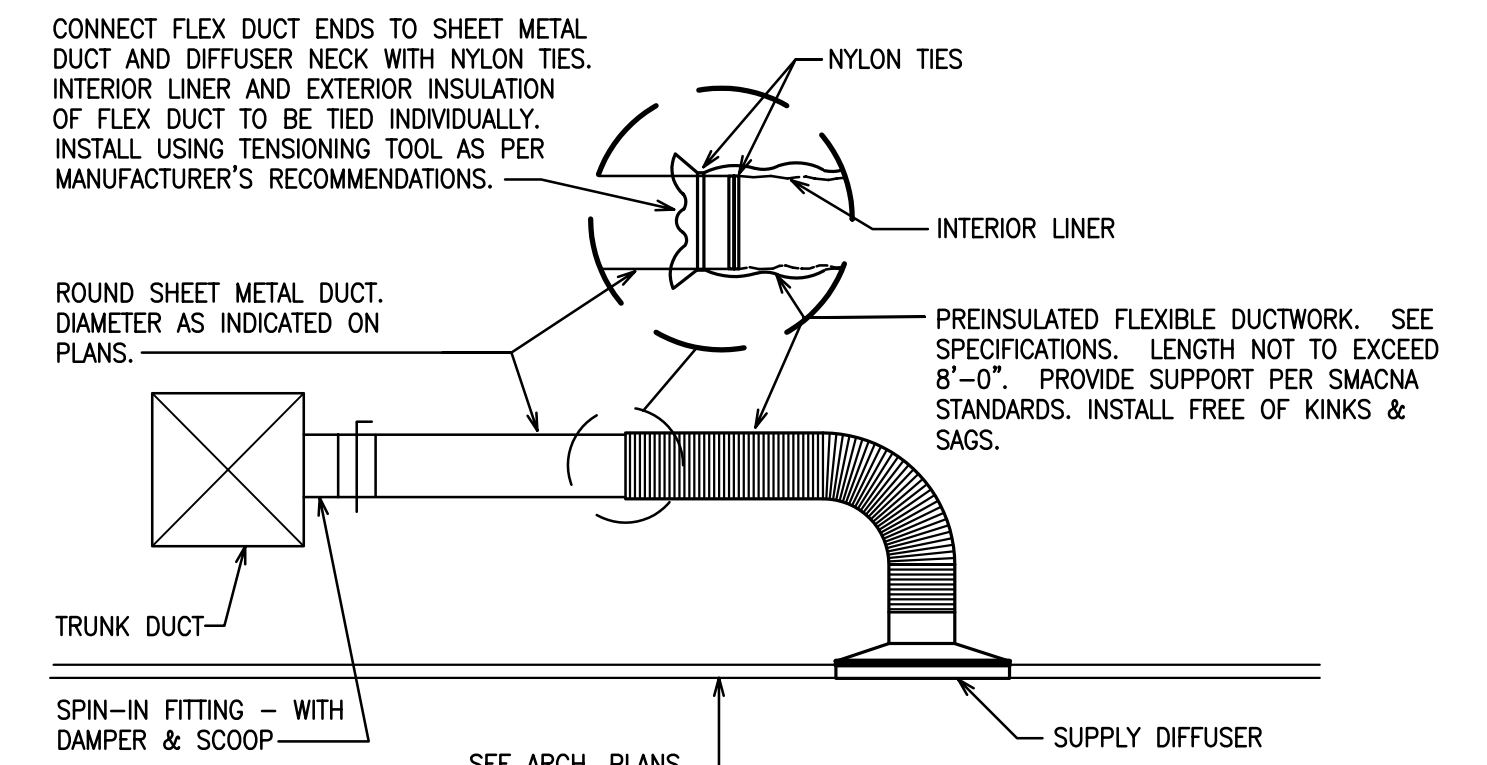
**DUCT SUPPORT DETAIL**  
SCHEMATIC - NO SCALE



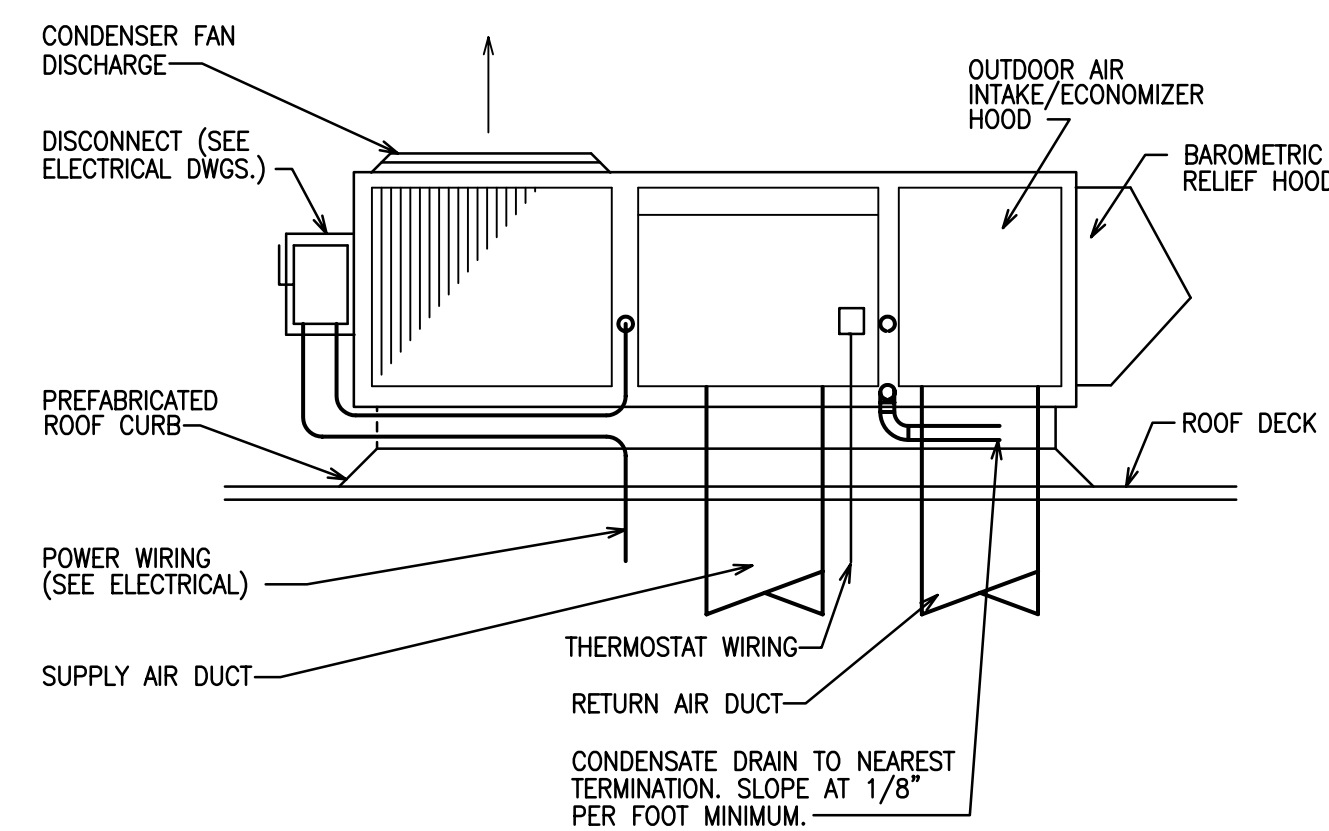
**ROOF CURB FRAMING - MECHANICAL EQUIPMENT**  
SCHEMATIC - NO SCALE



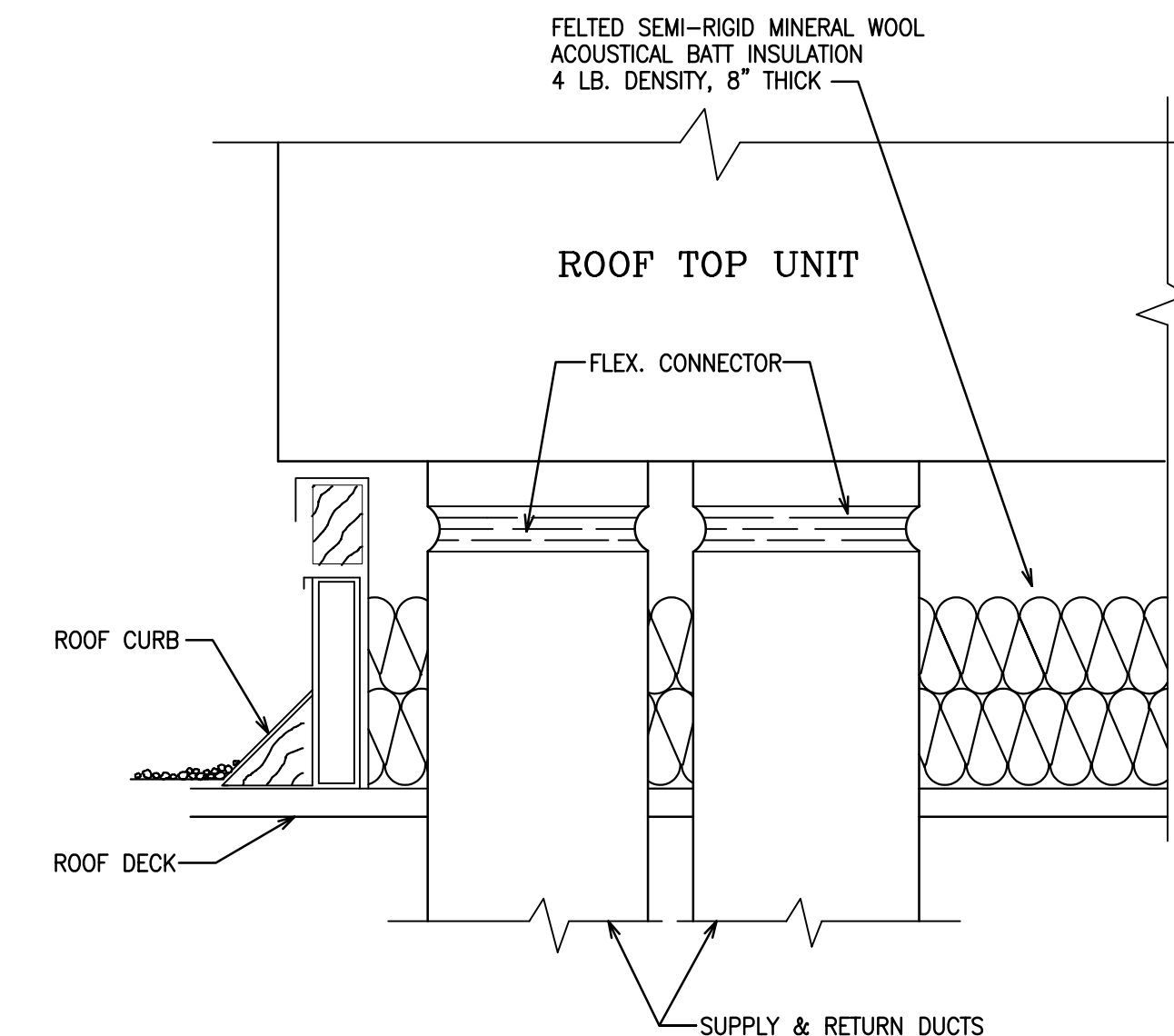
**CONDENSATE DRAIN TRAP**  
SCHEMATIC - NO SCALE



**FLEXIBLE DUCT TAKE-OFF DETAIL**  
SCHEMATIC - NO SCALE



**ROOF TOP AIR CONDITIONER DETAIL**  
SCHEMATIC - NO SCALE



**ROOF TOP MOUNTING DETAIL**  
SCHEMATIC - NO SCALE

THESE PLANS ARE THE PROPERTY OF MRP DESIGN GROUP, INC. AND ARE SUBJECT TO FEDERAL COPYRIGHT LAWS. ANY USE OF SAME WITHOUT THE EXPRESS WRITTEN PERMISSION OF MRP DESIGN GROUP, INC. IS STRICTLY PROHIBITED.

ARCHITECT OF RECORD:

THOMAS E. MORGAN, JR.  
ARCHITECT

423 FISCHER TRAIL  
ELLIJAY, GEORGIA 30540

SEAL:



3450 Acworth Due West Road  
Building 100, Suite 120  
Kennesaw, Georgia 30144  
P. 770-917-9172  
F. 770-917-9470  
www.mrpdesign.com

RELEASED FOR CONSTRUCTION

ISSUES / REVISIONS:

NO.	DATE	DESCRIPTION
1	7/26/2024	PERMIT SET
2	12/22/2024	REVIEW COMMENTS

DRAWN BY: JWE

CHKD BY: JWE

**WHATABURGER**  
JESSIE JEWEL PKWY  
GAINESVILLE, GA 30501



SHEET TITLE:

DETAILS  
HVAC

PROJECT NO: 23008

M2.1

THESE PLANS ARE THE PROPERTY OF MRP DESIGN GROUP, INC. AND ARE SUBJECT TO FEDERAL COPYRIGHT LAWS. ANY USE OF SAME WITHOUT THE EXPRESS WRITTEN PERMISSION OF MRP DESIGN GROUP, INC. IS STRICTLY PROHIBITED.

**TOP VIEW**

**FRONT VIEW**

**RIGHT VIEW**

**ISOMETRIC BACK VIEW**

**APPROVALS / CERTIFICATIONS**

THIS HOOD COMPLIES WITH THE FOLLOWING:

**UL710 / ULC-664**  
STANDARD FOR EXHAUST HOOD AND RELATED CONTROLS FOR COMMERCIAL AND INSTITUTIONAL COOKING EQUIPMENT

**NFPA96**  
NATIONAL FIRE PROTECTION ASSOCIATION - STD 96

**NSF2**  
NATIONAL SANITATION FOUNDATION NO. 2 "FOOD SERVICE EQUIPMENT"

**NOTE:** THE EXHAUST AIR FLOW RATES WERE ESTABLISHED UNDER CONTROLLED LABORATORY CONDITIONS. GREATER EXHAUST RATES MAY BE REQUIRED FOR COMPLETE VAPOR AND SMOKE REMOVAL IN SPECIFIC INSTALLATIONS.

**FILTERS/GREASE REMOVAL**

THIS HOOD UTILIZES A COMBINATION OF FLAMEGUARD SS TYPE-S 12X16 AND/OR 12X20 ARE KASON TRAPPER S/S FILTERS 7001 SERIES 12X16 & 12X20 MUST BE UL LISTED STAINLESS STEEL GREASE FILTERS

THEY MUST BE INSTALLED AT ALL TIMES DURING VENTILATION HOOD OPERATION

THIS UNIT REQUIRES: FILTERS (8)  
FLAMEGUARD FILTER, S/S BAFFLE TYPE VI  
(8) 12X20  
(NOTE) HOOD INCLUDES TEMPERATURE INTERLOCK SYSTEM

**GRILL HOOD U.L. #MH16346**  
(STANDARD USED U.L. 710)

DATE: 8/11/2022	MATERIAL:	REV: B	REVISION: 20230019 FR	DATE: 1/30/2023	CUSTOMER:
DRAWN: G.Veddo	WIDTH: N/A	UNLESS OTHERWISE SPECIFIED: TOLERANCES:		UNITS: mm [in]	
WEIGHT: N/A	GRAIN LENGTH: N/A	X.XX [X.XX] ±0.00 mm ±0.009"			
COMMENTS:		THIRD ANGLE PROJECTION			
THESE DRAWINGS AND SPECIFICATIONS ARE THE PROPERTY OF MRP DESIGN GROUP, INC. AND SHALL NOT BE REPRODUCED OR COPIED OR TRANSMITTED TO A THIRD PARTY WITHOUT THE WRITTEN PERMISSION OF MRP.		SIZE: A3	SHEET: 2 OF 3	TITLE: 87" DOUBLE SIDED CLAM SHELL GRILL HOOD	ITEM NO: WTB1603

ARCHITECT OF RECORD:

THOMAS E. MORGAN, JR.  
ARCHITECT

423 FISCHER TRAIL  
ELLIJAY, GEORGIA 30540

SEAL:

**MRP DESIGN GROUP**

3450 Acworth Due West Road  
Building 100, Suite 120  
Kennesaw, Georgia 30144  
P. 770-917-9172  
F. 770-917-9470  
www.mrpdesign.com

RELEASED FOR CONSTRUCTION

ISSUES / REVISIONS:

NO.	DATE	DESCRIPTION

DRAWN BY: HMK  
CHKD BY: JWE

DOUBLE SIDE GRILL HOOD  
SUPPLIED WITH (1) 3.0 GAL TANK

DOUBLE SIDE GRILL HOOD  
INCLUIDO CON (1) TANQUE DE 3.0 GAL

ITEM NO.	QTY REQD.	PART NUMBER	REV	DESCRIPTION	MATERIAL
1	1	WTB1603.5100	-	LIQUID LINE ASSEMBLY	
2	1	WTB1603.5200	-	DETECTION LINE ASSEMBLY	

ISOMETRIC VIEW

Labels: 1W NOZZLE DUCT, DETECTION LINE LINEA DE DETECCION, LIQUID LINE LINEA DE LIQUIDO, #2120 NOZZLE & #418569 SWIVEL ADAPTOR, #1IN NOZZLE PLENUM, #1IN NOZZLE PLENUM, #2120 NOZZLE & #418569 SWIVEL ADAPTOR.

DATE: 8/9/2022	MATERIAL:	REV: -	REVISION:	DATE:	CUSTOMER:
DRAWN: G.Veddo	WIDTH: N/A	UNLESS OTHERWISE SPECIFIED: TOLERANCES:		UNITS: mm [in]	
WEIGHT: 5.25 kg	GRAIN LENGTH: N/A	X.XX [X.XX] ±0.00 mm ±0.009"			
COMMENTS:		THIRD ANGLE PROJECTION			
THESE DRAWINGS AND SPECIFICATIONS ARE THE PROPERTY OF MRP DESIGN GROUP, INC. AND SHALL NOT BE REPRODUCED OR COPIED OR TRANSMITTED TO A THIRD PARTY WITHOUT THE WRITTEN PERMISSION OF MRP.		SIZE: A3	SHEET: 1 OF 1	TITLE: ANSUL ASSY	ITEM NO: WTB1603.5000

WHATABURGER  
JESSIE JEWEL PKWY  
GAINESVILLE, GA 30501

ITEM NO.	QTY REQD.	PART NUMBER	REV	DESCRIPTION	MATERIAL
1	1	A-12-013	-	3 GAL. TANKS/BELL W/ADAPTOR #429852	Generic
2	6	A-12-022	-	FUSIBLE LINK, 250P DEG, #415739	Generic
3	2	A-12-045	-	PULLEY ELBOW #423251	Generic
4	1	A-12-129553	-	R1/2 MECH. RELEASE ASSY #429853	Generic
5	2	E8-094	-	CONNECTOR, 1/2 STR 3/7T #TC601	Generic
6	1	A-12-5068	-	SWITCH, DUAL, SHARP ACTION #423879 WITH LEADS	Generic
7	1	A-12-580	-	WIRE ROPE (30" STAINLESS-STEEL)	Generic

ANSUL BOX FRONT

DATE: 6/3/2013	MATERIAL:	SYN:	REVISION:	DATE:	CUSTOMER:
DRAWN: D.BOOTE	WIDTH: N/A	UNLESS OTHERWISE SPECIFIED: TOLERANCES:		UNITS: mm [in]	
WEIGHT:	GRAIN LENGTH: N/A	X.XX [X.XX] ±0.00 mm ±0.009"			
COMMENTS:		THIRD ANGLE PROJECTION			
THESE DRAWINGS AND SPECIFICATIONS ARE THE PROPERTY OF MRP DESIGN GROUP, INC. AND SHALL NOT BE REPRODUCED OR COPIED OR TRANSMITTED TO A THIRD PARTY WITHOUT THE WRITTEN PERMISSION OF MRP.		SIZE: B	SHEET: 1 OF 1	TITLE: REMOTE ANSUL SYSTEM	ITEM NO: A-WTB1263

WHATABURGER

JESSIE JEWEL PKWY  
GAINESVILLE, GA 30501

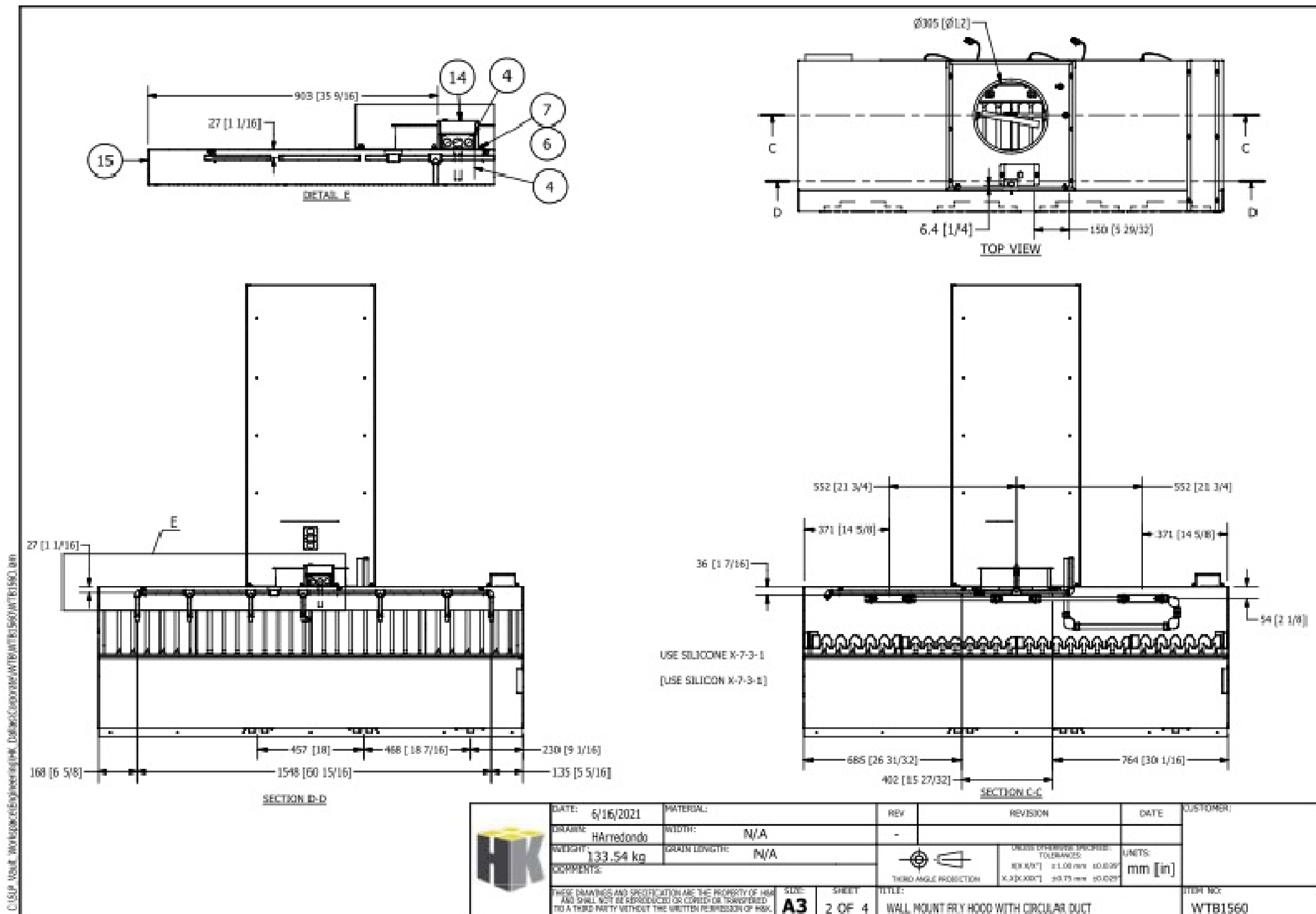
SHIELD TITLE:

HOOD DRAWINGS

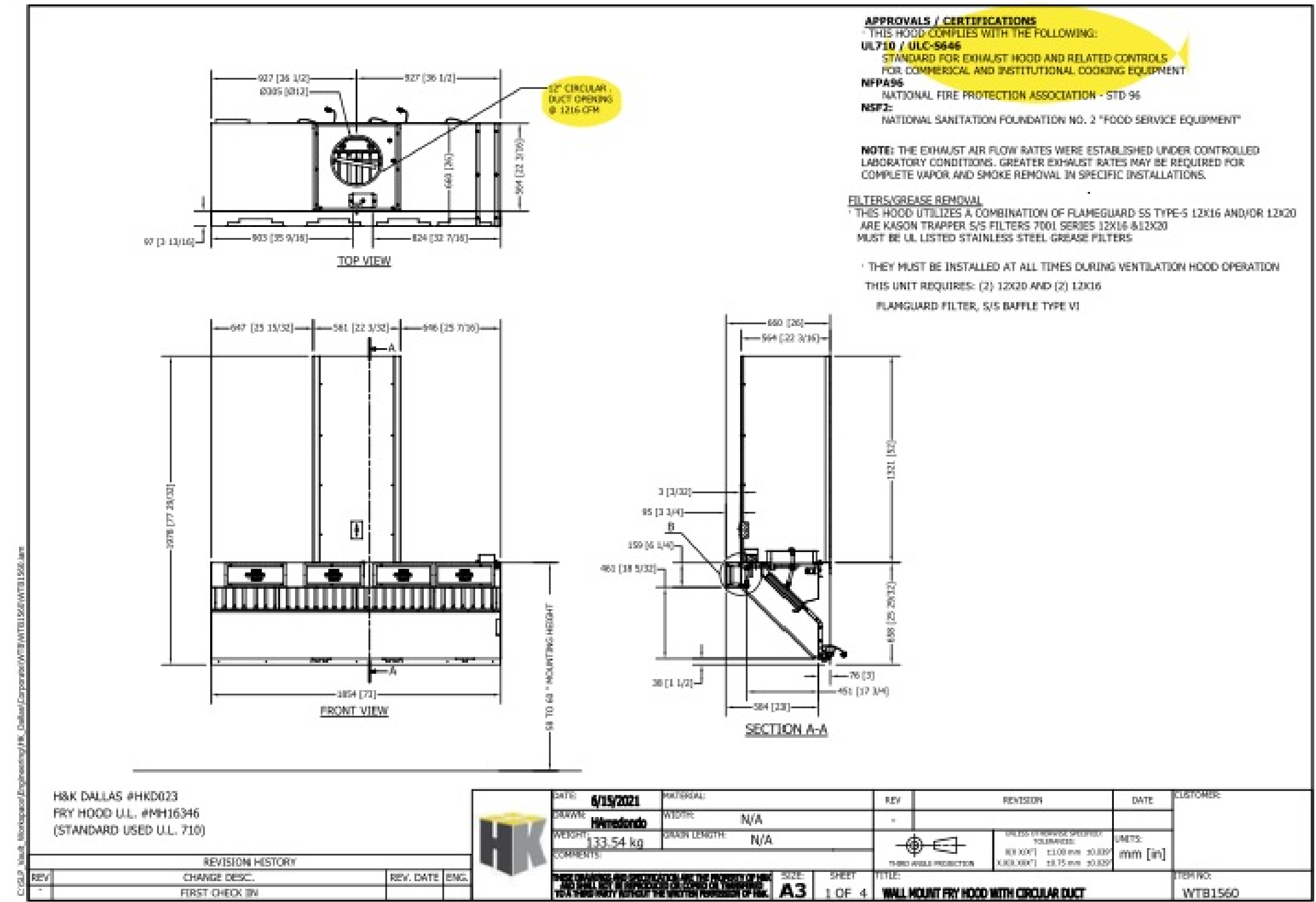
PROJECT NO: 23008

M3.1

THESE PLANS ARE THE PROPERTY OF MRP DESIGN GROUP, INC. AND ARE SUBJECT TO FEDERAL COPYRIGHT LAWS. ANY USE OF SAME WITHOUT THE EXPRESS WRITTEN PERMISSION OF MRP DESIGN GROUP, INC. IS STRICTLY PROHIBITED.



DATE: 6/16/2021	MATERIAL:	REV	REVISION	DATE	CUSTOMER
DRAWN: Hamedondo	WIDTH: N/A	-			
WEIGHT: 133.54 kg	GRAIN LENGTH: N/A				
COMMENTS:					
THESE DRAWINGS AND SPECIFICATIONS ARE THE PROPERTY OF MRP DESIGN GROUP, INC. AND SHALL NOT BE REPRODUCED OR COPIED OR TRANSMITTED TO A THIRD PARTY WITHOUT THE WRITTEN PERMISSION OF MRP DESIGN GROUP, INC.					
NO: A3	SHEET: 2 OF 4	TITLE: WALL MOUNT FRY HOOD WITH CIRCULAR DUCT		ITEM NO: WTB1560	



**APPROVALS / CERTIFICATIONS**  
 THIS HOOD COMPLES WITH THE FOLLOWING:  
 UL710 / ULC-9646  
 STANDARD FOR EXHAUST HOOD AND RELATED CONTROLS FOR COMMERCIAL AND INSTITUTIONAL COOKING EQUIPMENT  
 NFPA96  
 NATIONAL FIRE PROTECTION ASSOCIATION - STD 96  
 NSF-2  
 NATIONAL SANITATION FOUNDATION NO. 2 "FOOD SERVICE EQUIPMENT"

**NOTE:** THE EXHAUST AIR FLOW RATES WERE ESTABLISHED UNDER CONTROLLED LABORATORY CONDITIONS. GREATER EXHAUST RATES MAY BE REQUIRED FOR COMPLETE VAPOR AND SMOKE REMOVAL IN SPECIFIC INSTALLATIONS.

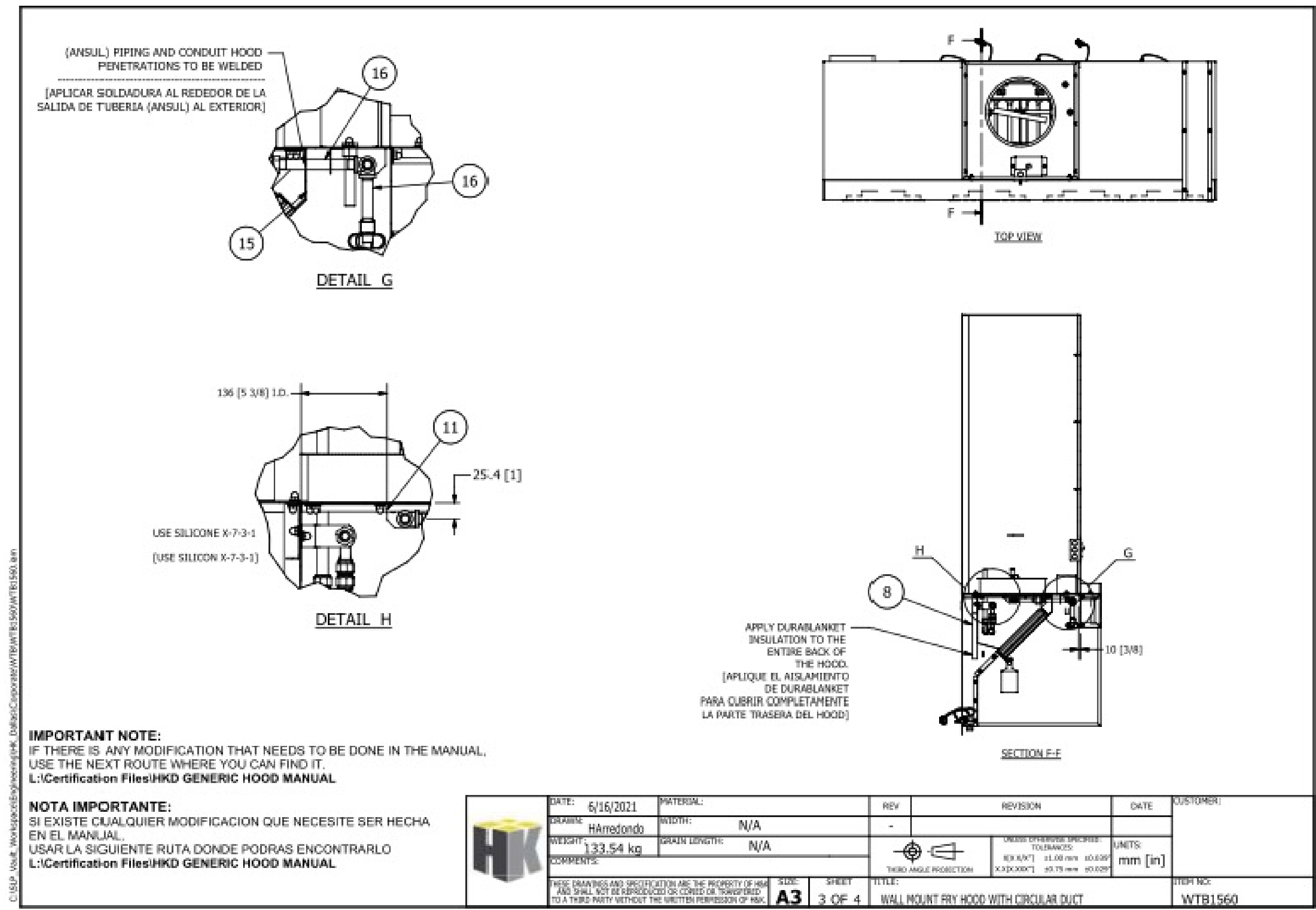
**FILTERS/GREASE REMOVAL**  
 THIS HOOD UTILIZES A COMBINATION OF FLAMEGUARD SS TYPE-5 12X16 AND/OR 12X20 ARE KASON TRAPPER 5/S FILTERS 7001 SERIES 12X16 & 12X20 MUST BE UL LISTED STAINLESS STEEL GREASE FILTERS

THEY MUST BE INSTALLED AT ALL TIMES DURING VENTILATION HOOD OPERATION  
 THIS UNIT REQUIRES: (2) 12X20 AND (2) 12X16  
 FLAMEGUARD FILTER, 5/S Baffle Type VI

**12" CIRCULAR DUCT OPENING @ 1216 CFM**

H&K DALLAS #HKD023  
 FRY HOOD U.L. #MH16346  
 (STANDARD USED U.L. 710)

DATE: 6/15/2021	MATERIAL:	REV	REVISION	DATE	CUSTOMER
DRAWN: Hamedondo	WIDTH: N/A	-			
WEIGHT: 133.54 kg	GRAIN LENGTH: N/A				
COMMENTS:					
THESE DRAWINGS AND SPECIFICATIONS ARE THE PROPERTY OF MRP DESIGN GROUP, INC. AND SHALL NOT BE REPRODUCED OR COPIED OR TRANSMITTED TO A THIRD PARTY WITHOUT THE WRITTEN PERMISSION OF MRP DESIGN GROUP, INC.					
NO: A3	SHEET: 1 OF 4	TITLE: WALL MOUNT FRY HOOD WITH CIRCULAR DUCT		ITEM NO: WTB1560	



(ANSUL) PIPING AND CONDUIT HOOD PENETRATIONS TO BE WELDED  
 [APLICAR SOLDADURA AL REDEDOR DE LA SALIDA DE TUBERIA (ANSUL) AL EXTERIOR]

USE SILICONE X-7-3-1  
 (USE SILICON X-7-3-1)

APPLY DURABLANKET INSULATION TO THE ENTIRE BACK OF THIS HOOD.  
 [APLIQUE EL AISLAMIENTO DE DURABLANKET PARA CUBRIR COMPLETAMENTE LA PARTE TRASERA DEL HOOD]

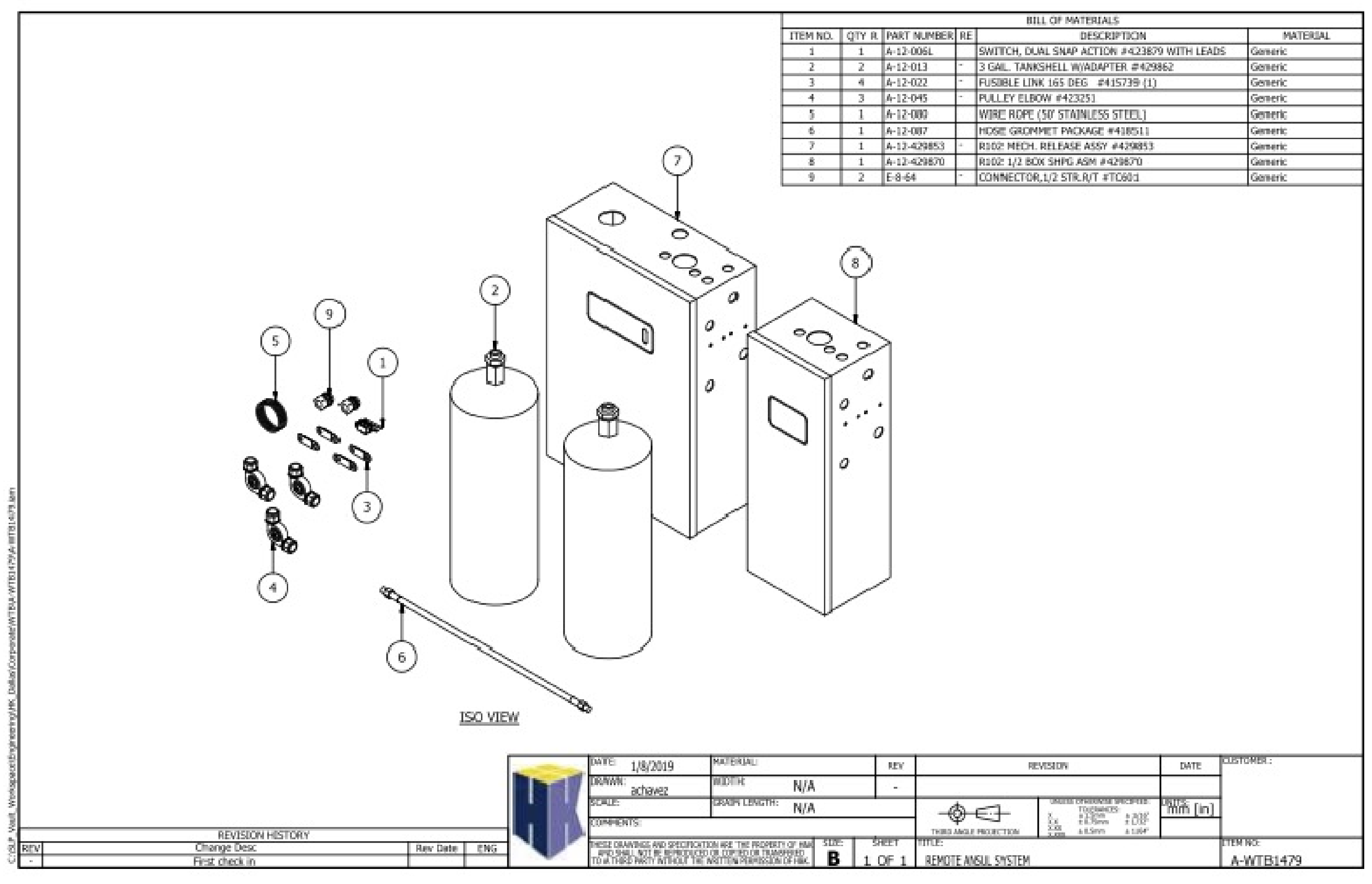
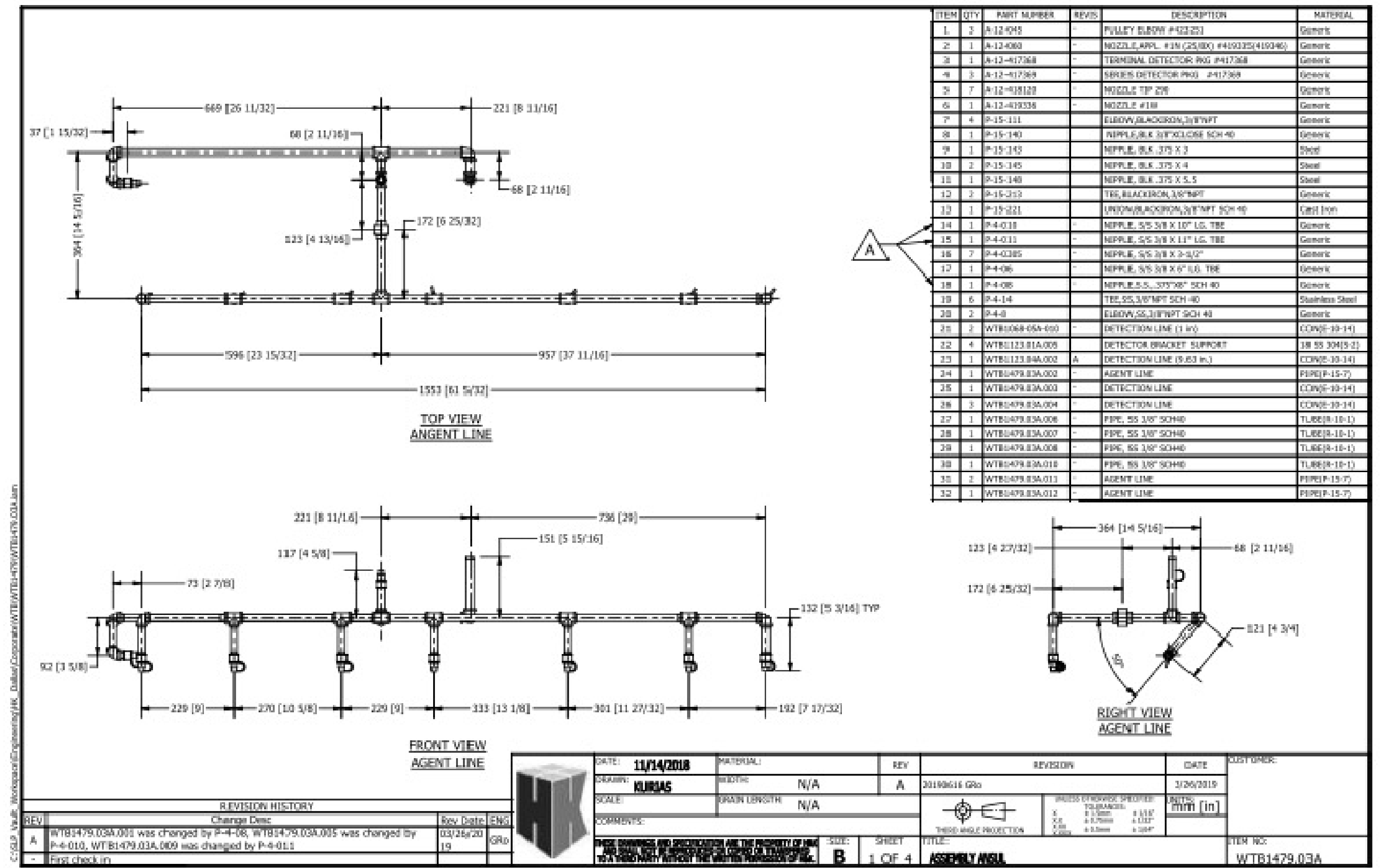
**IMPORTANT NOTE:**  
 IF THERE IS ANY MODIFICATION THAT NEEDS TO BE DONE IN THE MANUAL, USE THE NEXT ROUTE WHERE YOU CAN FIND IT.  
 L: Certification Files\HKD GENERIC HOOD MANUAL

**NOTA IMPORTANTE:**  
 SI EXISTE CUALQUIER MODIFICACION QUE NECESITE SER HECHA EN EL MANUAL, USAR LA SIGUIENTE RUTA DONDE PODRAS ENCONTRARLO  
 L: Certification Files\HKD GENERIC HOOD MANUAL

H&K DALLAS #HKD023  
 FRY HOOD U.L. #MH16346  
 (STANDARD USED U.L. 710)

DATE: 6/16/2021	MATERIAL:	REV	REVISION	DATE	CUSTOMER
DRAWN: Hamedondo	WIDTH: N/A	-			
WEIGHT: 133.54 kg	GRAIN LENGTH: N/A				
COMMENTS:					
THESE DRAWINGS AND SPECIFICATIONS ARE					

THESE PLANS ARE THE PROPERTY OF MRP DESIGN GROUP, INC. AND ARE SUBJECT TO FEDERAL COPYRIGHT LAWS. ANY USE OF SAME WITHOUT THE EXPRESS WRITTEN PERMISSION OF MRP DESIGN GROUP, INC. IS STRICTLY PROHIBITED.



ARCHITECT OF RECORD:  
 THOMAS E. MORGAN, JR.  
 ARCHITECT  
 423 FISCHER TRAIL  
 ELLIJAY, GEORGIA 30540

SEAL:

MRP DESIGN GROUP  
 3450 Acworth Due West Road  
 Building 100, Suite 120  
 Kennesaw, Georgia 30144  
 P. 770-917-9172  
 F. 770-917-9470  
 www.mrpdesign.com

RELEASED FOR CONSTRUCTION

ISSUES / REVISIONS:

NO.	DATE	DESCRIPTION
1	7/26/2019	PERMIT SET
2	12/22/2024	REVIEW COMMENTS

DRAWN BY: HJK  
 CHKD BY: JWE

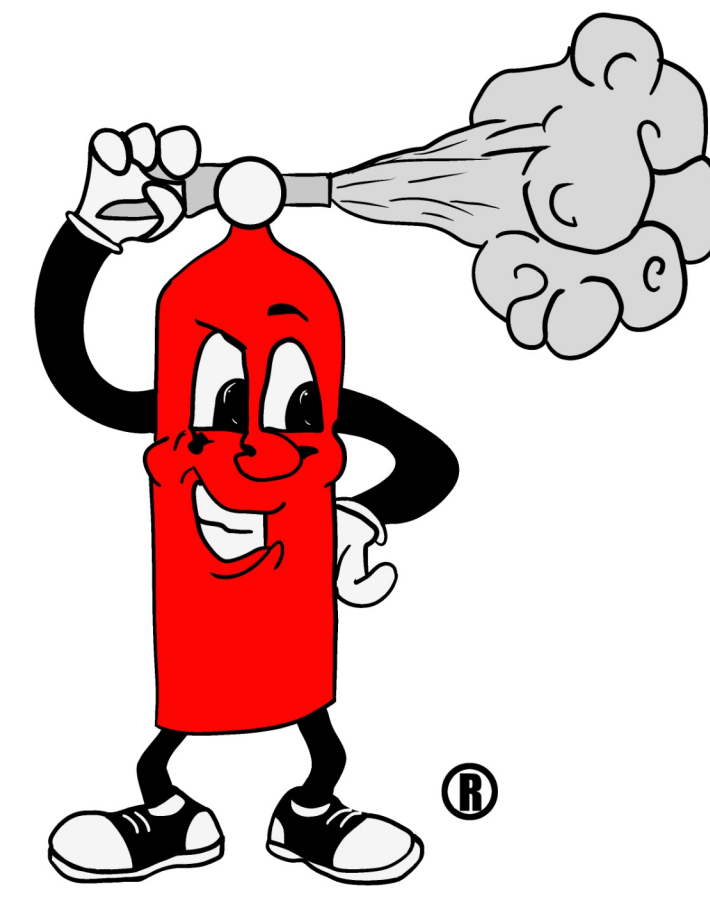
WHATABURGER  
 JESSIE JEWEL PKWY  
 GAINESVILLE, GA 30501

SHEET TITLE:  
 HOOD DRAWINGS

PROJECT NO: 23008

M3.3

**INSTALLED PER  
NFPA 17A  
AND  
NFPA 96**



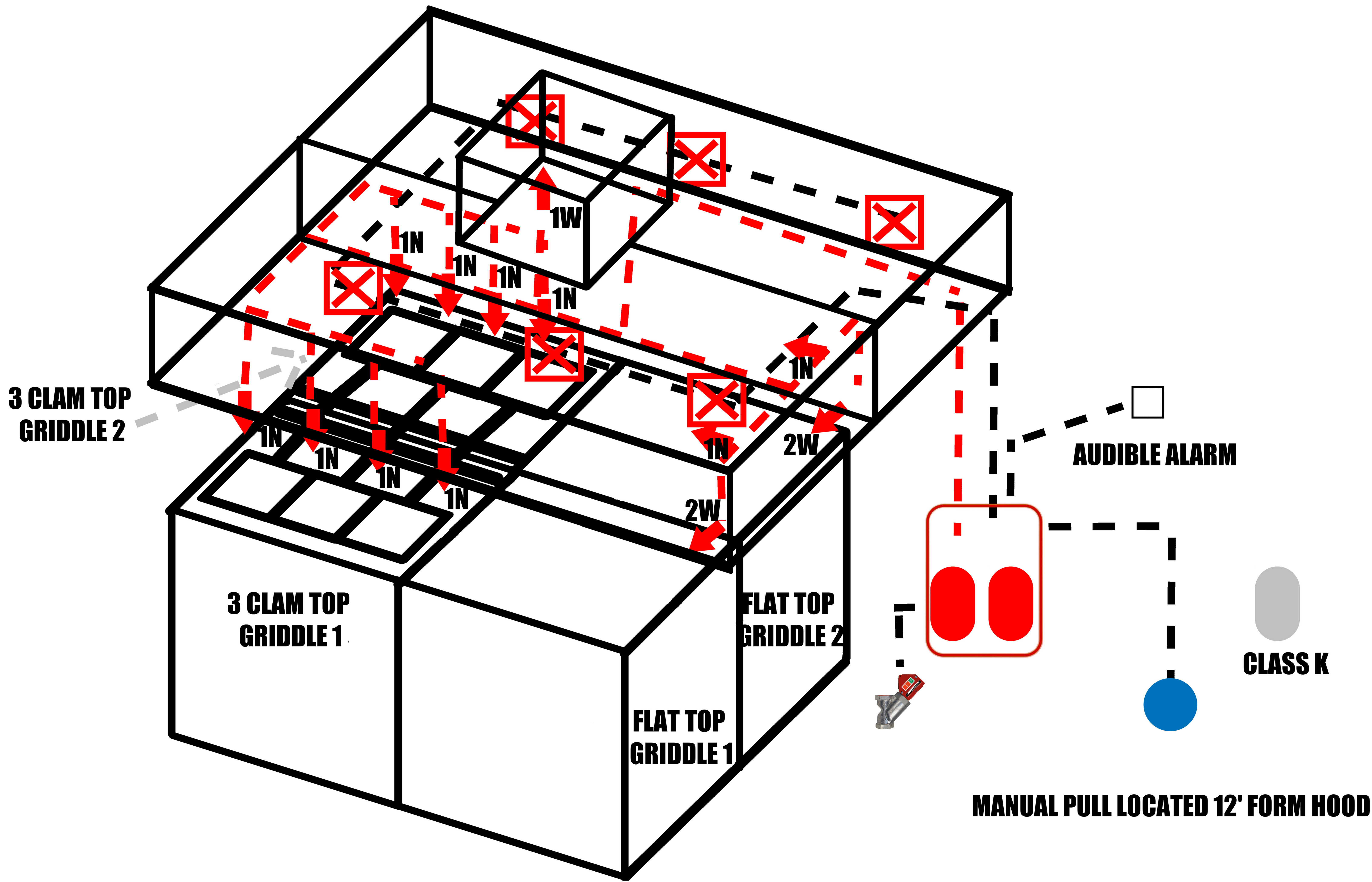
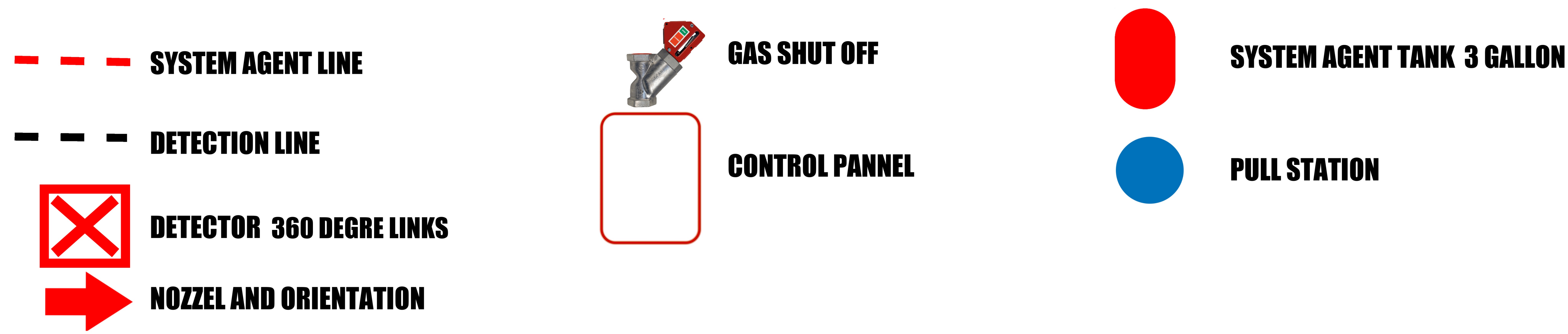
**Cliffs Fire Extinguisher  
Co., Inc.**

311 Bell Park Drive  
Woodstock, Georgia 30188

GA State License NO. 0004B

PERMIT HOLDER: DAVID MULKEY  
LICENSE: 2549XNP

SIGNATURE: *[Signature]*



**MADE TO ORDER  
HOLDINGS  
WHATABURGER**  
1943 JESSE JEWELL PARKWAY  
#700, GAINESVILLE, GA 30501

HAZZARD	NOZZEL	COUNT	FLOWS
PLENUM 1	1N	1	1
PLENUM 2	1N	1	1
DUCT	1W	1	1
FLAT TOP GRIDDLE 1	2W	1	2
FLAT TOP GRIDDLE 2	2W	1	2
3 CLAM TOP GRIDDLE 1	1N	4	4
3 CLAM TOP GRIDDLE 2	1N	4	4
<b>TOTAL FLOWS</b>		<b>15</b>	<b>ALLOWED FLOWS 22</b>

DESIGNER: DAVID MULKEY

SCOPE OF WORK NOTES:  
INSTALLATION OF A ANSUL R-102  
PRE-ENGINEERED  
KITCHEN FIRE SUPPRESSION SYSTEM

SHEET CONTENTS

**KITCHEN SYSTEM  
LAYOUT**

PAGE # 1-2

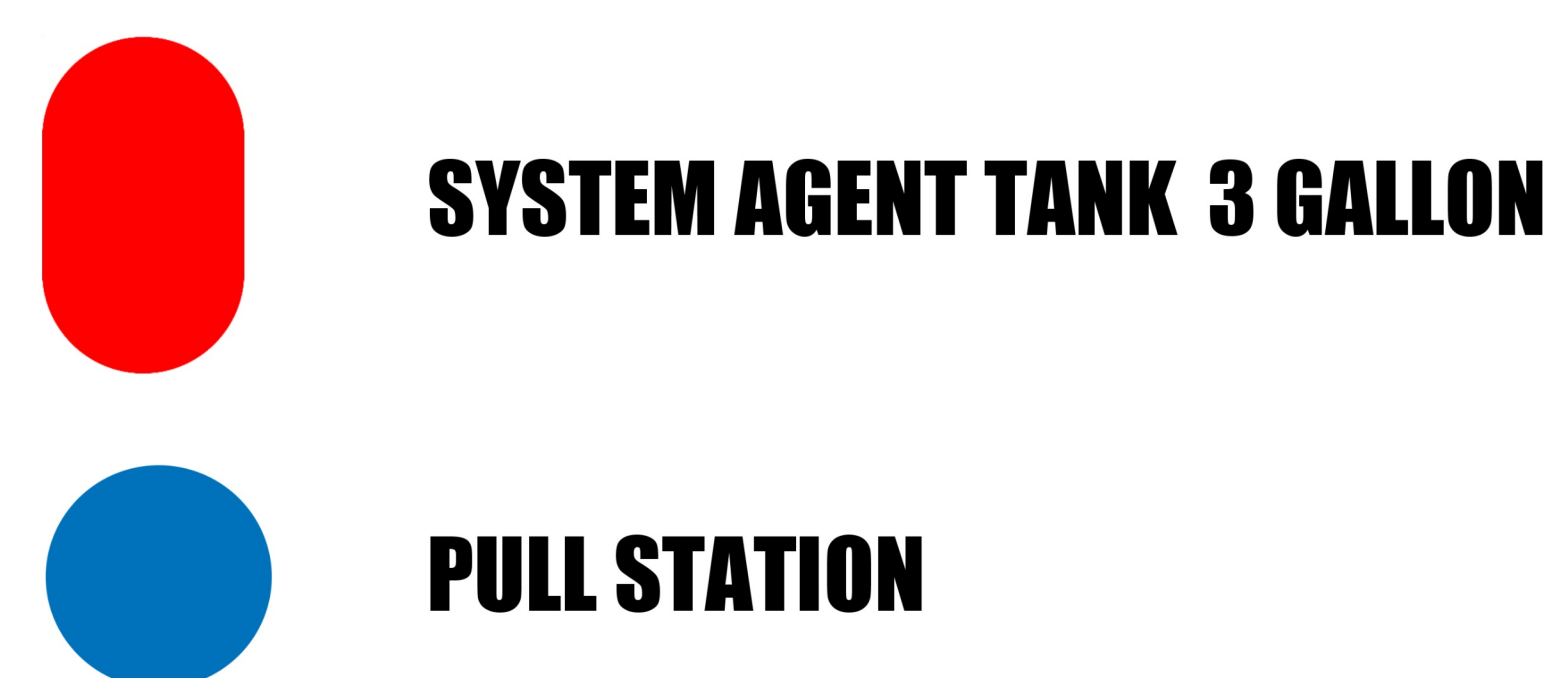
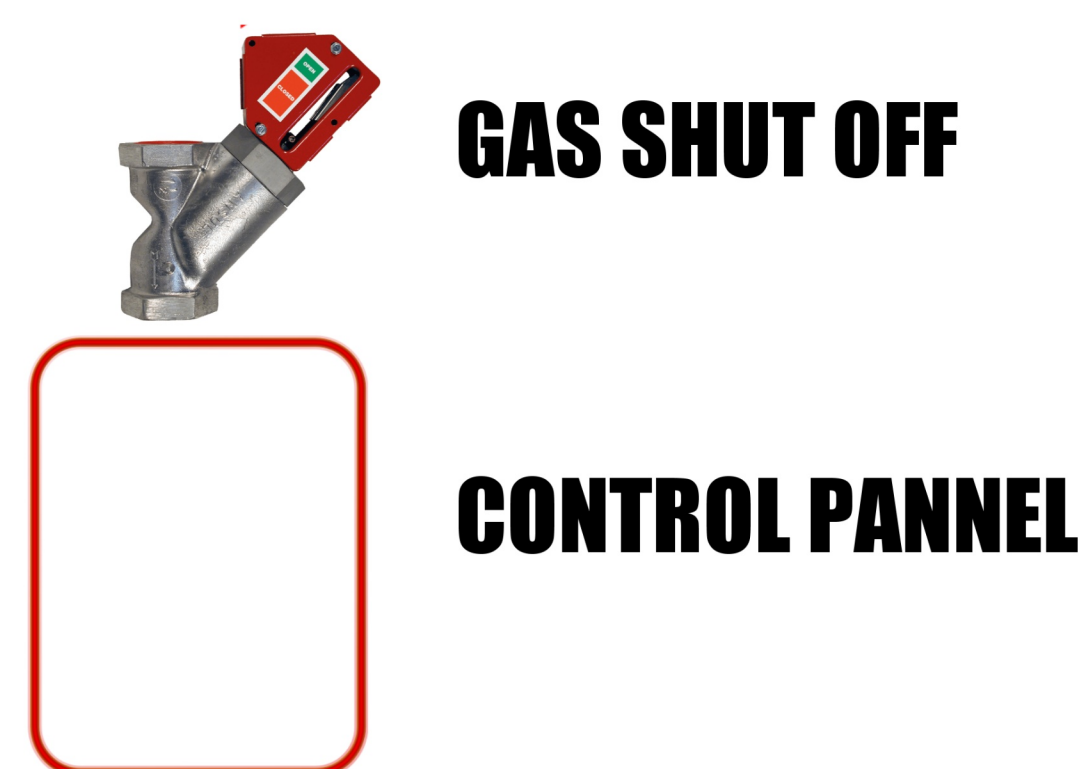
**WB-K-SYS-1**

--- SYSTEM AGENT LINE

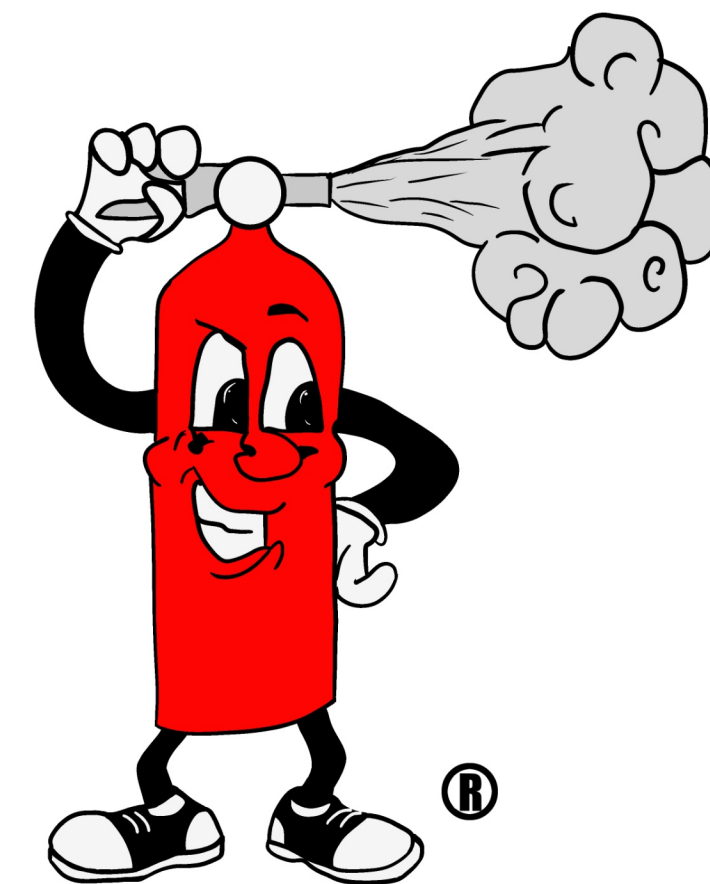
- - - DETECTION LINE

☒ DETECTOR 360 DEGRE LINKS

➔ NOZZEL AND ORIENTATION



**INSTALLED PER  
NFPA 17A  
AND  
NFPA 96**



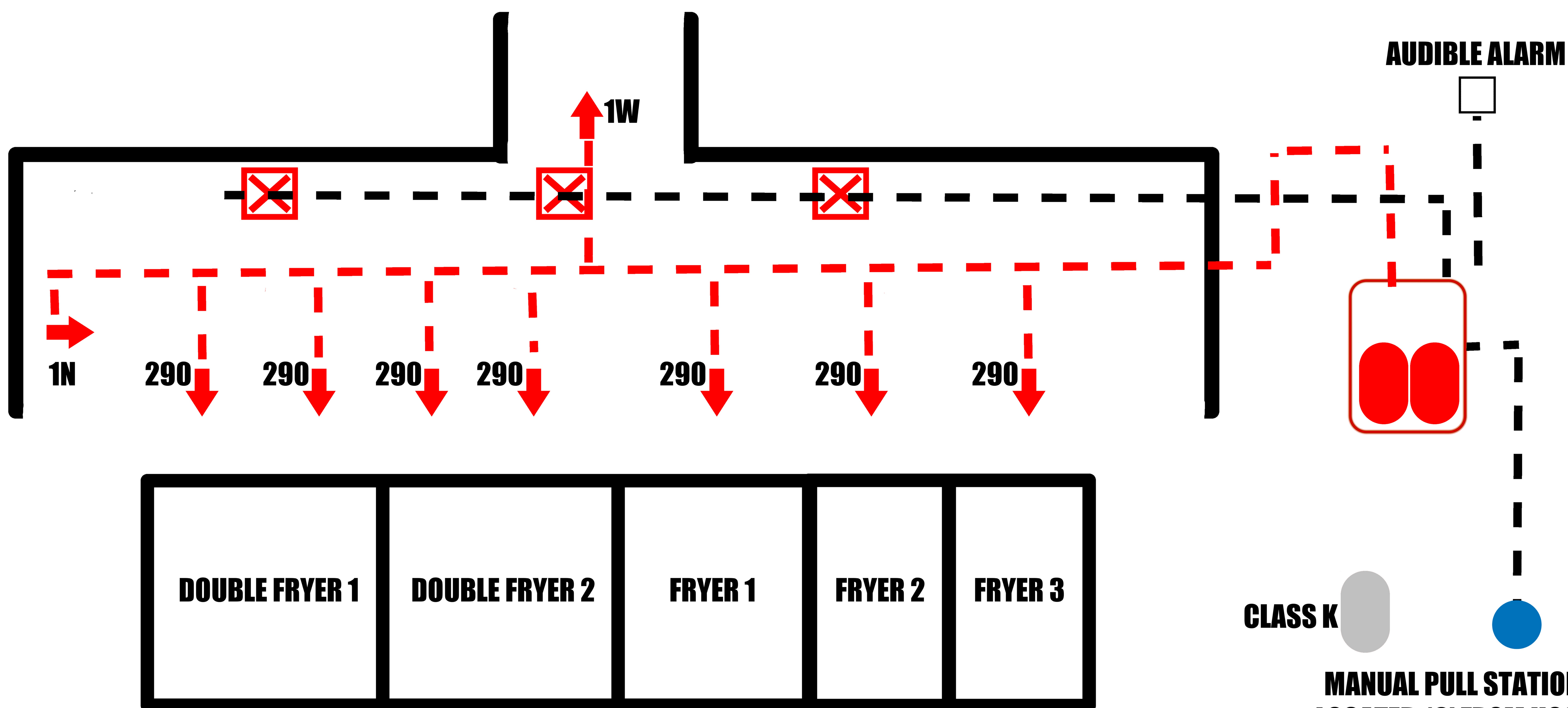
**Cliffs Fire Extinguisher  
Co., Inc.**

311 Bell Park Drive  
Woodstock, Georgia 30188

GA State License NO. 0004B

PERMIT HOLDER: DAVID MULKEY  
LICENSE: 2549XNP

SIGNATURE: *[Signature]*



**MADE TO ORDER  
HOLDINGS**

**WHATABURGER**

1943 JESSE JEWELL PARKWAY  
#700, GAINESVILLE, GA 30501

HAZZARD	NOZZEL	COUNT	FLAWS
PLENUM	1N	1	1
DUCT	1W	1	1
DOUBLE FRYER 1	290	2	4
DOUBLE FRYER 2	290	2	4
FRYER 1	290	1	2
FRYER 2	290	1	2
FRYER 3	290	1	2
<b>TOTAL FLOWS</b>	<b>16</b>	<b>ALLOWED FLOWS</b>	<b>22</b>

**CLASS K**  
**MANUAL PULL STATION  
LOCATED 16' FROM HOOD**

DESIGNER: DAVID MULKEY

SCOPE OF WORK NOTES:  
INSTALATION OF A ANSUL R-102  
PRE-ENGINEERED  
KITCHEN FIRE SUPPRESSION SYSTEM

SHEET CONTENTS

**KITCHEN SYSTEM  
LAYOUT**

PAGE # 2-2

**WB-K-SYS-2**