

# Walgreens



## WAG HVAC Start-Up AES

Site ID: 3606

Address: 6465 S TAMIAMI TRL

City: SARASOTA

State: FL

Zip: 34231 3844

Survey Date: 10/12/2022

Start-Up Date: 10.12.2022

Start-Up Technician: Gary Serviss

Start-Up Technician Signature:

A handwritten signature in black ink, appearing to read 'Gary Serviss'.

Walgreens Installing HVAC Contractor: AES  
Mechanical

HVAC Contractor Phone: 334-252-0380

Contractor's Email Address:

Chase.edge@aesmech.com

Start-Up Technician Signature: (1)

A handwritten signature in black ink, appearing to be 'M. J. ...', written in a cursive style.

RTU Unit Name Plate Photo (1)



RTU Walgreens Asset Tag Photo (1)



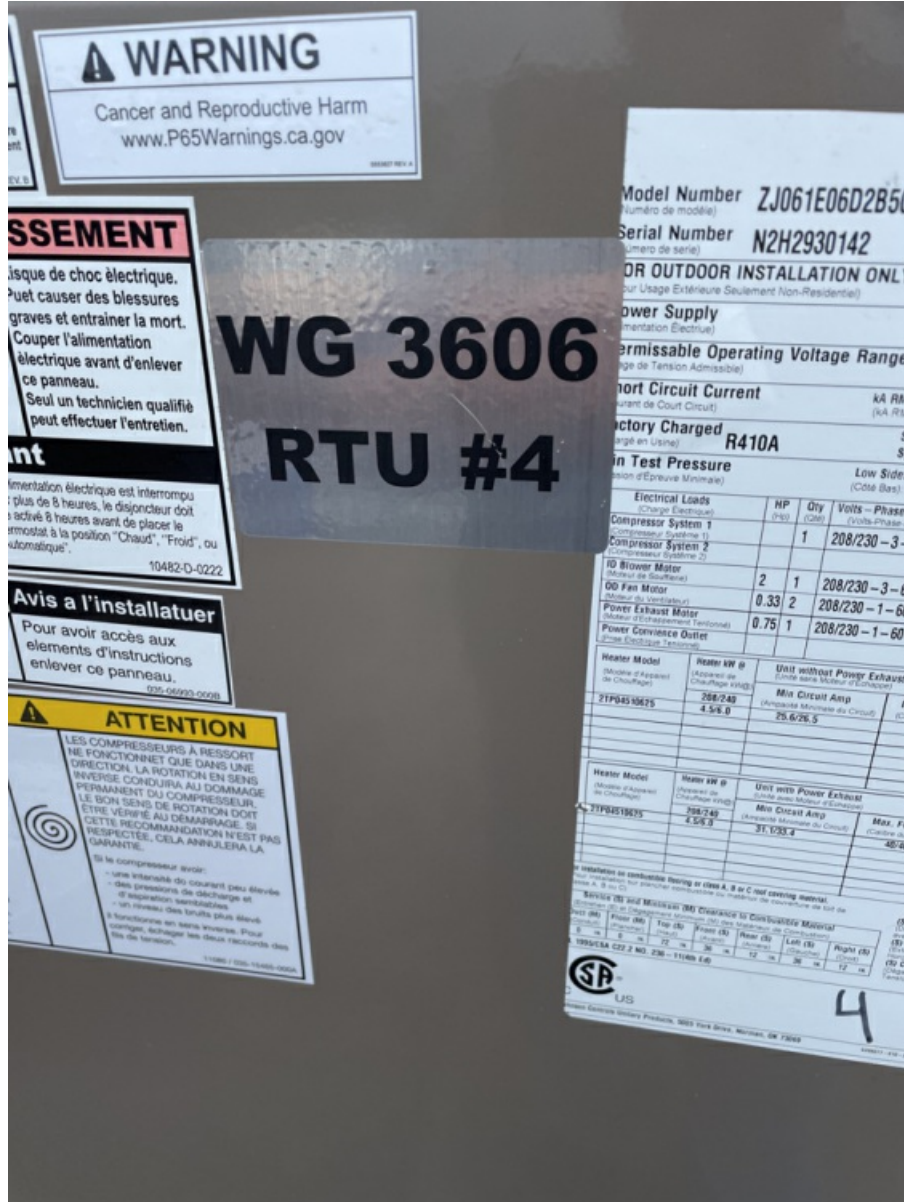
Installed RTU Air Filter Photo (1)



Installed RTU Condensate Drain Photo (1)



RTU Label Photo (1)



If Seismic Adapter Clips Furnished and Installed on RTU, take Photo (1)



All 5 Sides of Installed Unit of RTU - Including Top with Condensor Fan Section. (1)



All 5 Sides of Installed Unit of RTU - Including Top with Condenser Fan Section. (2)



All 5 Sides of Installed Unit of RTU - Including Top with Condenser Fan Section. (3)



All 5 Sides of Installed Unit of RTU - Including Top with Condenser Fan Section. (4)



All 5 Sides of Installed Unit of RTU - Including Top with Condensor Fan Section. (5)



Interior Pictures of RTU Blower Section, Power / Control Section, Heat Section, Compressor Section. (1)



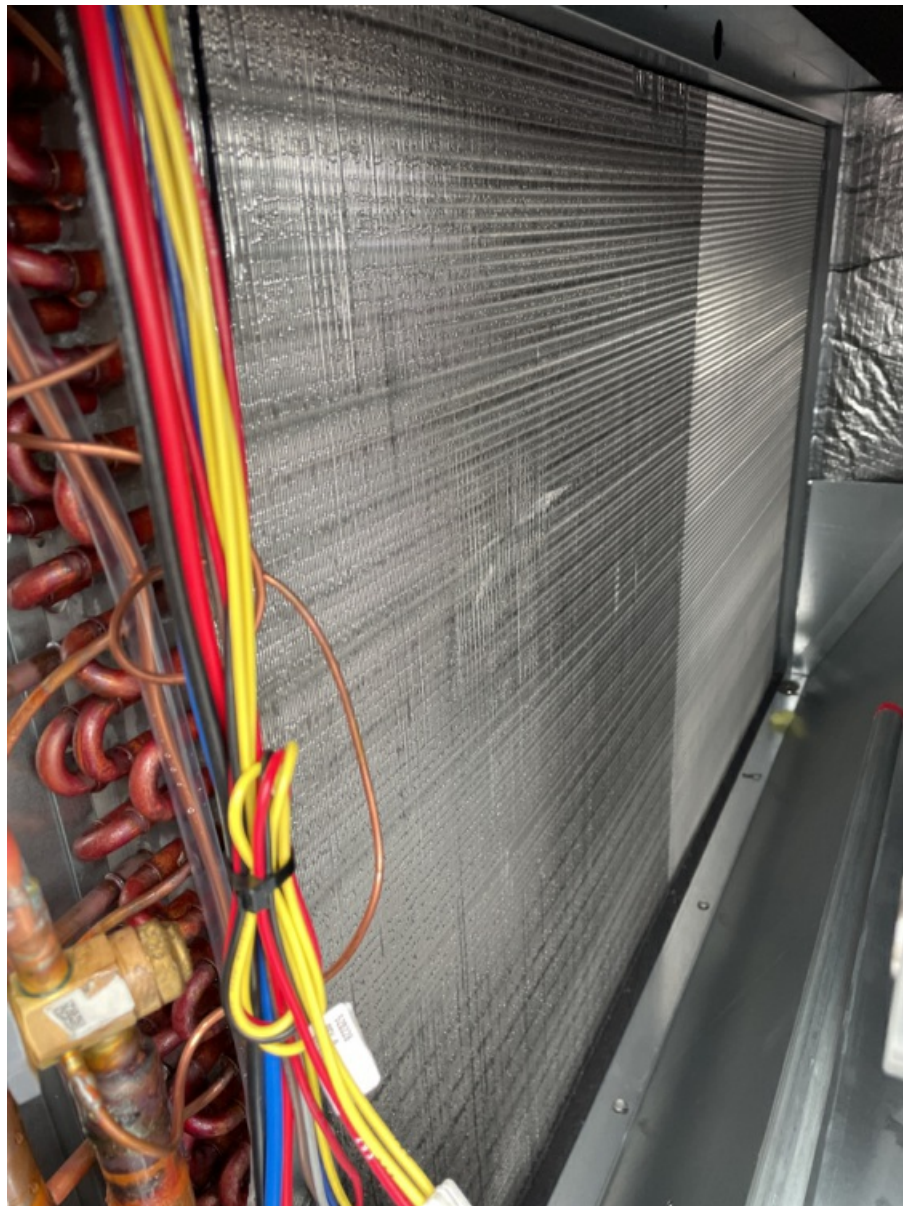
Complete / Clear Pictures of All RTU Condenser Coil and Evaporator Coil Surfaces. (1)



Complete / Clear Pictures of All RTU Condenser Coil and Evaporator Coil Surfaces. (2)



Complete / Clear Pictures of All RTU Condenser Coil and Evaporator Coil Surfaces. (3)



## All RTU Electric and Heat Utility Piping Through Roof and All Connections / Penetrations at the Unit. (1)



Roof Areas Around RTU Unit Showing the Areas are Clean and Free of Any Debris or Damage Related to the Installation.  
(1)



Pictures of RTU Unit Mounting to Roof Curb / Adapter Curb Showing Proper Alignment and Sealing. (1)



Pictures of RTU Unit Mounting to Roof Curb / Adapter Curb Showing Proper Alignment and Sealing. (2)



Alignment of RTU Drive Component Photo (1)



Alignment of Blower Pulley Key Flush with End of Blower Shaft (1)



RTU Unit Name Plate Photo (1)

**Model Number** (Numéro de modèle) **ZT120E18R2B5GCB2R1**

**Serial Number** (Numéro de série) **N2K2935530**

**Central Cooling Air Conditioner**  
(Appareil de Climatisation Central avec Système de Chauffage)

**FOR OUTDOOR INSTALLATION ONLY**  
(Pour Usage Extérieure Seulement Non-Residentiel)

**Power Supply** (Alimentation Electrique)  
Volts-Phase-Hertz (Volts-Phase-Hertz) **208/230-3-60**

**Permissible Operating Voltage Range** (Plage de Tension Admissible)  
Min/Max **187V / 252V**

**Short Circuit Current** (Courant de Court Circuit)  
kA RMS SYMMETRICAL: (kA RMS Symétrique) **5**      V MAXIMUM: (V Maximum) **208/230**

**Factory Charged** (Chargé en Usine) **R410A**  
System #1: (Système #1) **7** lbs 12 oz 3.52 kg  
System #2: (Système #2) **7** lbs 12 oz 3.52 kg

**Min Test Pressure** (Pression d'Épreuve Minimale)  
Low Side: (Côté Bas) **236** psig **1,627** kpa      High Side: (Côté Haut) **445** psig **3,068** kpa

Electrical Loads (Charge Electrique)	HP (Che)	Qty (Qnt)	Volts-Phase-Hertz (Volts-Phase-Hertz)	Load Current (Courant de Charge)	Lock Rotor Current (Verrouillage Courant Rotor)
Compressor System 1 (Compresseur Système 1)		1	208/230-3-60	16.2	RLA 110 LRA
Compressor System 2 (Compresseur Système 2)		1	208/230-3-60	16.2	RLA 110 LRA
ID Blower Motor (Moteur de Soufflerie)	3	1	208/230-3-60	9.6/9.6	FLA
OD Fan Motor (Moteur du Ventilateur)	0.75	4	208/230-1-60	3.5/3.5	FLA
Power Exhaust Motor (Moteur d'Échappement Tensionné)	0.75	1	208/230-1-60	5.5/5.5	FLA
Power Convenience Outlet (Prise Electrique Tensionné)					FLA

**Designed Max Outlet Air Temperature: 200 F**  
(Température d'Aire Max à la Sortie) **93.3C**

Heater Model (Modèle d'Appareil de Chauffage)	Heater kW @ (Appareil de Chauffage kW@)	Unit without Power Exhaust (Unité sans Moteur d'Échapp)		Max Static (Statique Max) IN. W.C.
		Min Circuit Amp (Ampacité Minimale du Circuit)	Max. Fuse/Bkkr Size (Calibre du Fusible/Diaporkeur)	
21P045(2,3)1825	208/240 13.5/18.0	60.1/66.1	70/70	1.50

Heater Model (Modèle d'Appareil de Chauffage)	Heater kW @ (Appareil de Chauffage kW@)	Unit with Power Exhaust (Unité avec Moteur d'Échapp)		Max Static (Statique Max) IN. W.C.
		Min Circuit Amp (Ampacité Minimale du Circuit)	Max. Fuse/Bkkr Size (Calibre du Fusible/Diaporkeur)	
21P045(2,3)1825	208/240 13.5/18.0	65.8/73.0	80/80	1.50

For installation on combustible flooring or class A, B or C roof covering material.  
(Pour installation sur plancher combustible ou matériel de couverture de toit de classe A, B ou C)

Service (S) and Minimum (M) Clearance to Combustible Material (Écartement (S) et Dégageant Minimum (M) des Matériaux de Combustion)						
Duct (M) (Conduit)	Floor (M) (Plancher)	Top (S) (Haut)	Front (S) (Avant)	Rear (S) (Arrière)	Left (S) (Gauche)	Right (S) (Droit)
0 IN	0 IN	72 IN	36 IN	12 IN	36 IN	12 IN

UL 1995/CSA C22.2 NO. 236-11(4th Ed)

(S) Rear Clearance with Economizer: (Dégageant Arrière avec Economiseur) **36 IN**

(S) Horizontal overhang extension: (Extension en saillie Horizontale) **36 IN**

(S) Clearance with Power Exhaust: (Dégageant avec Echappement Tensionné) **IN**

RTU Walgreens Asset Tag Photo (1)



Installed RTU Air Filter Photo (1)



Installed RTU Condensate Drain Photo (1)



All RTU Field Power Wiring Photo (1)



All RTU Field Control Wiring Photo (1)



RTU Label Photo (1)



If Seismic Adapter Clips Furnished and Installed on RTU, take Photo (1)



All 5 Sides of Installed Unit of RTU - Including Top with Condensator Fan Section. (1)



All 5 Sides of Installed Unit of RTU - Including Top with Condensator Fan Section. (2)



All 5 Sides of Installed Unit of RTU - Including Top with Condenser Fan Section. (3)



All 5 Sides of Installed Unit of RTU - Including Top with Condensor Fan Section. (4)



All 5 Sides of Installed Unit of RTU - Including Top with Condensor Fan Section. (5)



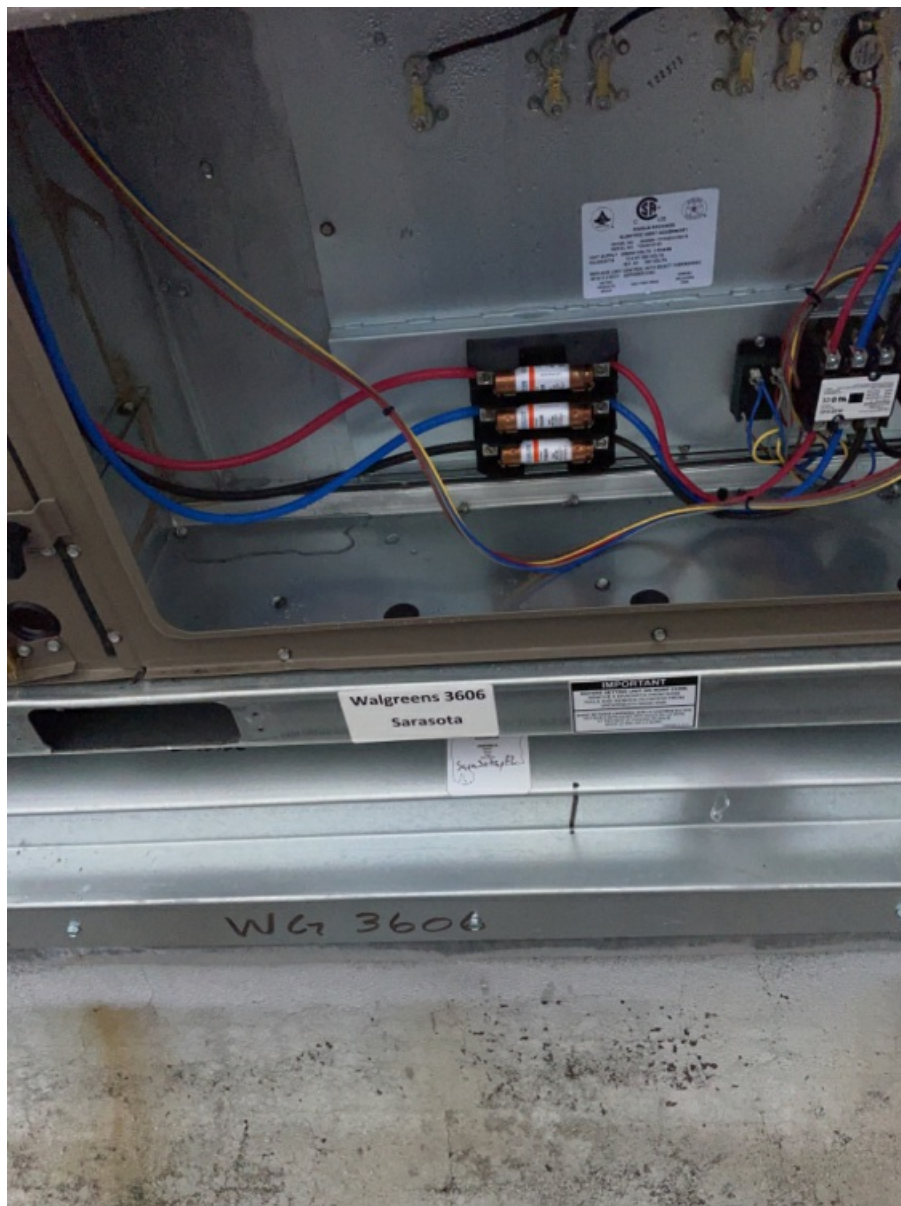
Interior Pictures of RTU Blower Section, Power / Control Section, Heat Section, Compressor Section. (1)



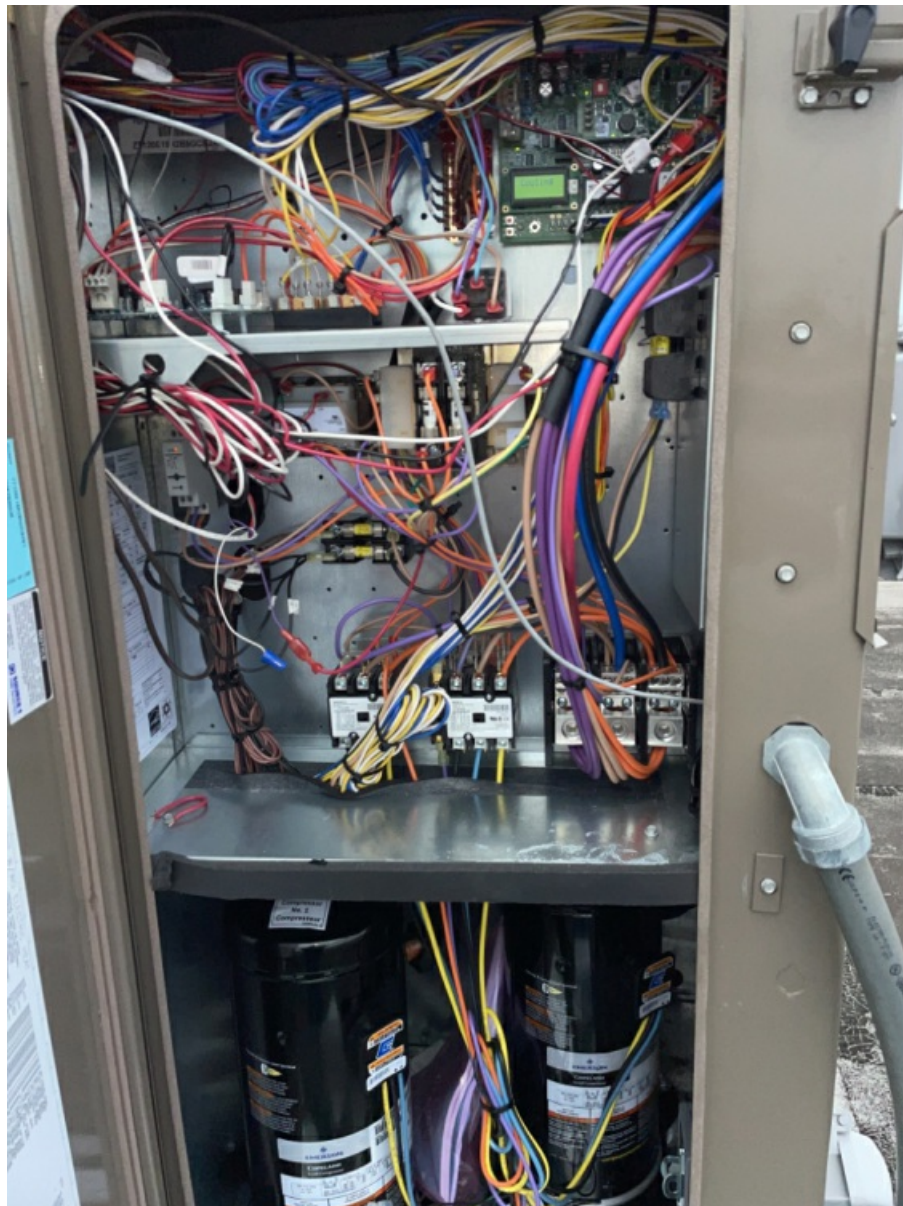
Interior Pictures of RTU Blower Section, Power / Control Section, Heat Section, Compressor Section. (2)



Interior Pictures of RTU Blower Section, Power / Control Section, Heat Section, Compressor Section. (3)



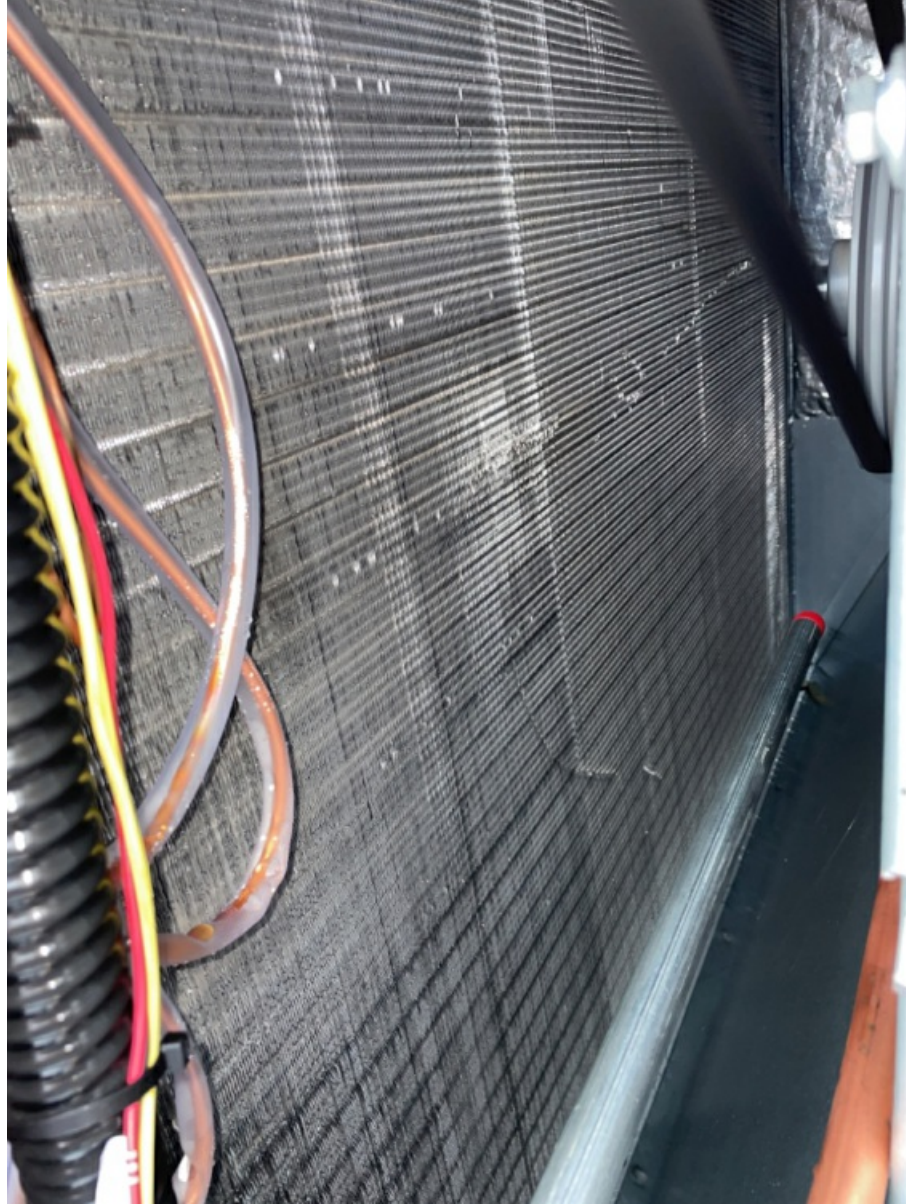
Interior Pictures of RTU Blower Section, Power / Control Section, Heat Section, Compressor Section. (4)



Complete / Clear Pictures of All RTU Condenser Coil and Evaporator Coil Surfaces. (1)



Complete / Clear Pictures of All RTU Condenser Coil and Evaporator Coil Surfaces. (2)



All RTU Electric and Heat Utility Piping Through Roof and All Connections / Penetrations at the Unit. (1)



Roof Areas Around RTU Unit Showing the Areas are Clean and Free of Any Debris or Damage Related to the Installation.  
(1)



Roof Areas Around RTU Unit Showing the Areas are Clean and Free of Any Debris or Damage Related to the Installation.  
(2)



Pictures of RTU Unit Mounting to Roof Curb / Adapter Curb Showing Proper Alignment and Sealing. (1)



Alignment of RTU Drive Component Photo (1)



Alignment of Blower Pulley Key Flush with End of Blower Shaft (1)



RTU Unit Name Plate Photo (1)

**Model Number** ZT180C00R2B5GCL2C1  
(Numéro de modèle)

**Serial Number** N2H2828721  
(Numéro de série)

**Central Cooling Air Conditioner**  
(Appareil de Climatisation Centrale avec Système de Chauffage)

**FOR OUTDOOR INSTALLATION ONLY**      **USE COPPER SUPPLY WIRE ONLY**  
(Pour Usage Extérieur Seulement Non-Residentiel)      (Utiliser Fil d'Alimentation en Cuivre Seulement)

**Power Supply**      Volts-Phase-Hertz      **208/230-3-60**  
(Alimentation Electrique)      (Volts-Phase-Hertz)

**Permissible Operating Voltage Range**      Min/Max      **187V / 252V**  
(Plage de Tension Admissible)

**Short Circuit Current**      KA RMS SYMMETRICAL:      **5**      V MAXIMUM:      **208/230**  
(Courant de Court-Circuit)      (KA RMS Symétrique)      (V Maximum)

**Factory Charged**      System #1: (Système #1)      23 lbs      0 oz      10.7 kg  
(Chargé en Usine)      System #2: (Système #2)      24 lbs      0 oz      10.9 kg  
   System #3: (Système #3)      lbs      oz      kg  
   System #4: (Système #4)      lbs      oz      kg

**Min Test Pressure**      Low Side:      **236**      psig      High Side:      **445**      psig  
(Pression d'Épreuve Minimale)      (Côté Bas)      1627      kPa      (Côté Haut)      3068      kPa

Electrical Loads	HP	Qty	Volts-Phase-Hertz	Load Current	Lock Rotor Current
(Charge Electrique)	(Cheval)	(Quantité)	(Volts-Phase-Hertz)	(Courant de Charge)	(Remorquage Courant Rotor)
Compressor System 1		1	208/230-3-60	25.3	RLA 184 LRA
Compressor System 2		1	208/230-3-60	25.3	RLA 184 LRA
Compressor System 3					RLA LRA
Compressor System 4					RLA LRA
ID Blower Motor	7.5	1	208/230-3-60	20.0/19.4	FLA
OD Fan Motor	0.33	4	208/230-1-60	3.5/3.5	FLA
Power Exhaust Motor	0.75	1	208/230-1-60	5.5/5.0	FLA
Power Condensate Outlet					FLA

Designed Max Outlet Air Temperature: **200 F**  
(Température d'Aire Max à la Sortie): **93.3 C**

Heater Model	HEATER KW @	Unit without Power Exhaust	Max Stack
(Modèle d'Appareil de Chauffage)	(Appareil de Chauffage (kW))	(Unité sans Moteur d'Échappement)	(Statue Max) H. W.C.
None	208/240	Min. Circuit Amp 90.6/90.3	Max. Fuse/Breaker Size 110/110
ZC184581825	13.5/18.0	90.6/90.3	110/110
ZC184583625	27.0/36.0	118.8/132.5	120/130
ZC184585425	40.5/54.0	185.9/194.2	175/175
ZC184587225	54.0/72.0	175.9/187.5	200/225

For installation on combustible flooring or class A, B or C roof covering material.  
(Pour installation sur plancher combustible ou matériau de couverture de toit de classe A, B ou C.)

Service (S) and Minimum (M) Clearance to Combustible Material							
(Entretien (S) et Déplacement Minimum (M) des Matériaux de Combustion)							
Duct (M)	Floor (M)	Top (S)	Front (S)	Rear (S)	Left (S)	Right (S)	
(Conduit)	(Plancher)	(Haut)	(Avant)	(Arrière)	(Gauche)	(Droite)	
0	0	0	72	36	24	24	36

UL 1895/CSA C22.2 NO. 236-114th Ed)

Johnson Controls Unitary Products, 5025 York Drive, Norman, OK 73069      67101-610-1007      Assembled in USA

RTU Walgreens Asset Tag Photo (1)



Installed RTU Air Filter Photo (1)



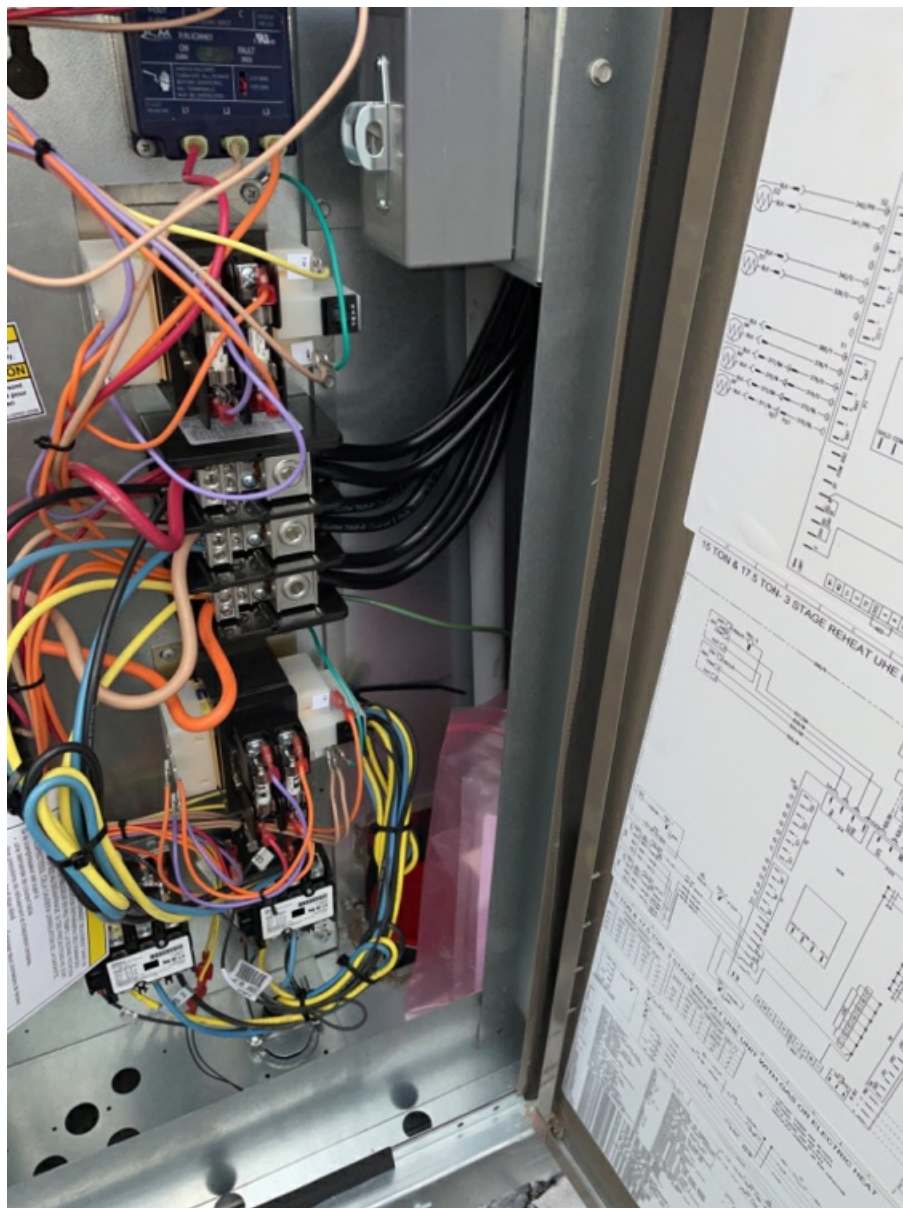
Installed RTU Economizer Photo (1)



Installed RTU Condensate Drain Photo (1)



All RTU Field Power Wiring Photo (1)



All RTU Field Control Wiring Photo (1)



RTU Label Photo (1)



If Seismic Adapter Clips Furnished and Installed on RTU, take Photo (1)



All 5 Sides of Installed Unit of RTU - Including Top with Condenser Fan Section. (1)



All 5 Sides of Installed Unit of RTU - Including Top with Condensator Fan Section. (2)



All 5 Sides of Installed Unit of RTU - Including Top with Condensor Fan Section. (3)



All 5 Sides of Installed Unit of RTU - Including Top with Condensor Fan Section. (4)



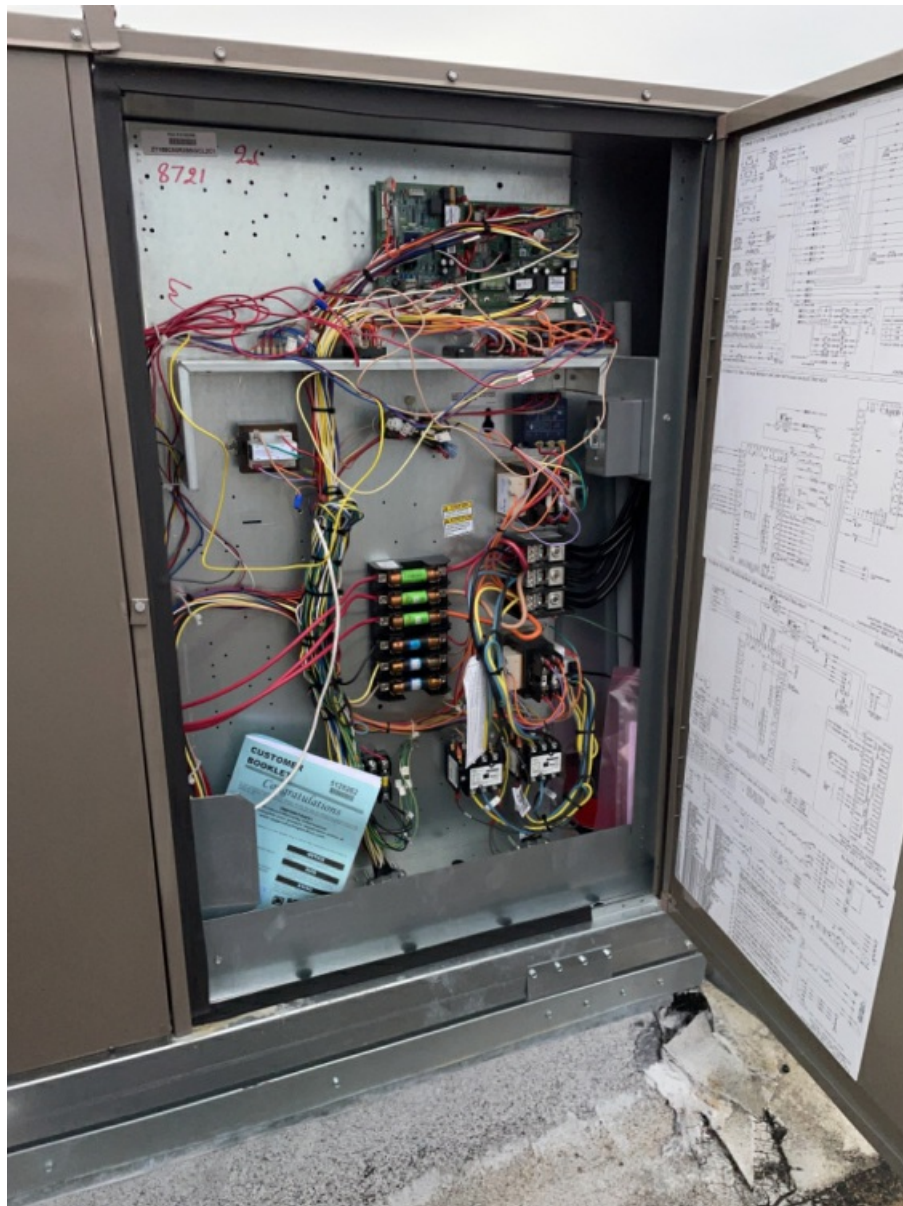
All 5 Sides of Installed Unit of RTU - Including Top with Condensor Fan Section. (5)



Interior Pictures of RTU Blower Section, Power / Control Section, Heat Section, Compressor Section. (1)



Interior Pictures of RTU Blower Section, Power / Control Section, Heat Section, Compressor Section. (2)



Interior Pictures of RTU Blower Section, Power / Control Section, Heat Section, Compressor Section. (3)



Complete / Clear Pictures of All RTU Condenser Coil and Evaporator Coil Surfaces. (1)



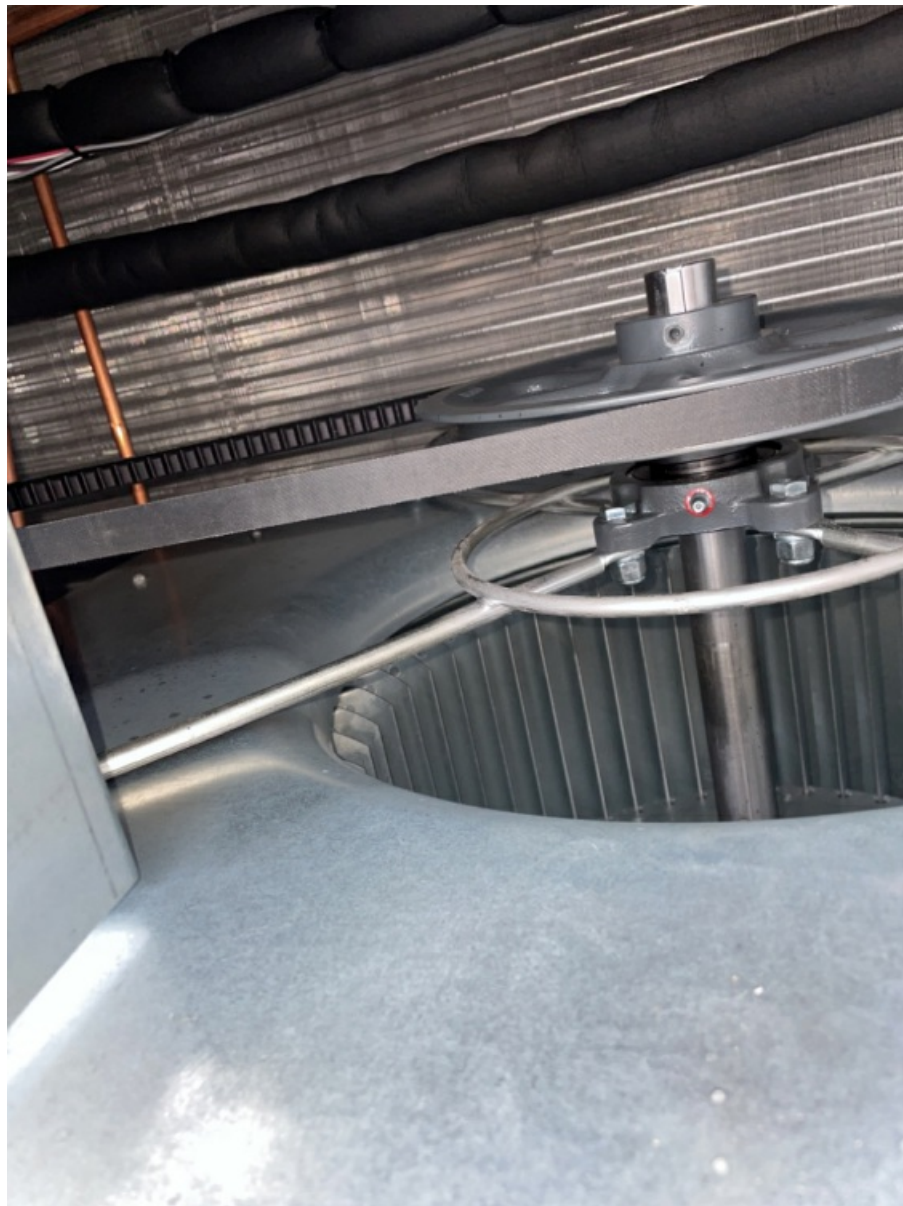
Complete / Clear Pictures of All RTU Condenser Coil and Evaporator Coil Surfaces. (2)



All RTU Electric and Heat Utility Piping Through Roof and All Connections / Penetrations at the Unit. (1)



Alignment of RTU Drive Component Photo (1)



## Alignment of Blower Pulley Key Flush with End of Blower Shaft (1)





Exhaust Fan Unit Name Plate Photo (2)



Exhaust Fan Unit Name Plate Photo (3)



Exhaust Fan Unit Name Plate Photo (4)



Exhaust Fan Unit Name Plate Photo (5)



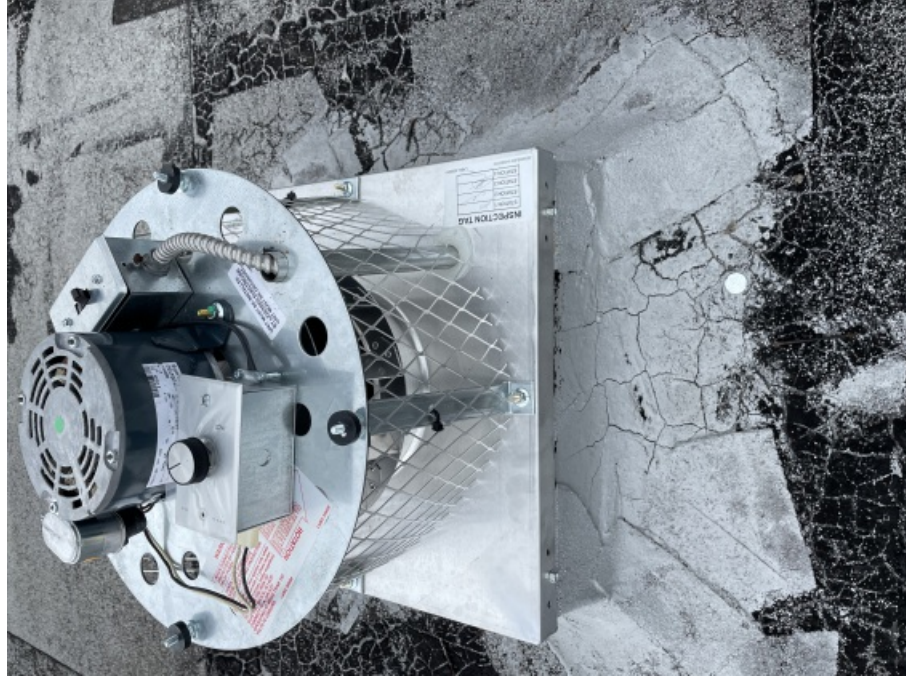
Exhaust Fan Unit Name Plate Photo (6)



## Take Photo of Device Controlling EF (1)



Take Photo of Device Controlling EF (2)



Take Photo of Device Controlling EF (3)



Take Photo of Device Controlling EF (4)



Take Photo of Device Controlling EF (5)



All 5 Sides of Installed Unit - Including Top (1)



All 5 Sides of Installed Unit - Including Top (2)



All 5 Sides of Installed Unit - Including Top (3)



**All 5 Sides of Installed Unit - Including Top (4)**

All 5 Sides of Installed Unit - Including Top (5)



**All 5 Sides of Installed Unit - Including Top (6)**

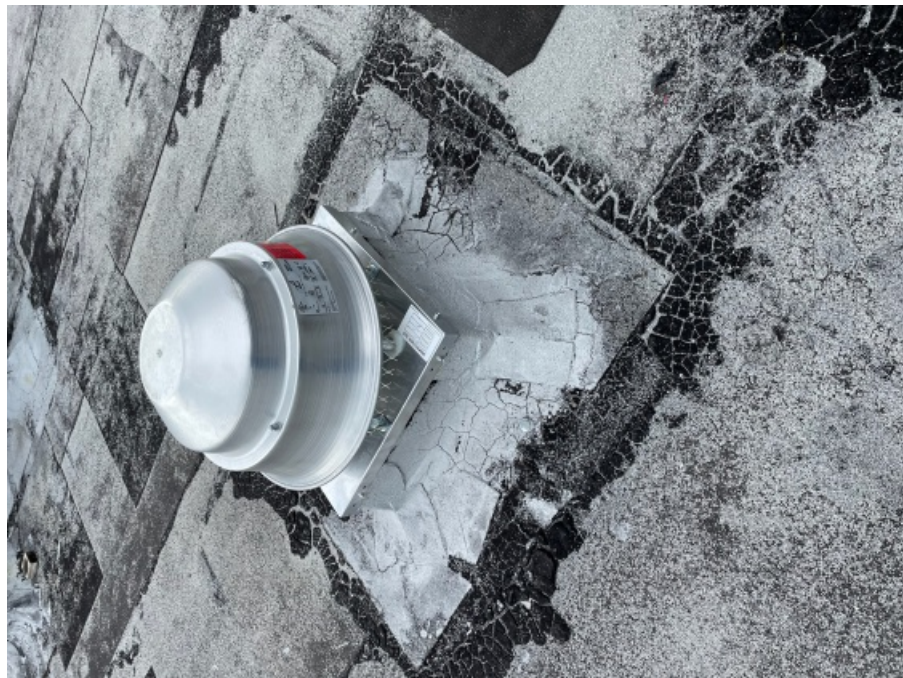
All 5 Sides of Installed Unit - Including Top (7)



All 5 Sides of Installed Unit - Including Top (8)



All 5 Sides of Installed Unit - Including Top (9)



**All 5 Sides of Installed Unit - Including Top (10)**