

HOOD INFORMATION - Job#4137855

HOOD NO.	TAG	MODEL	LENGTH	MAX. COOKING TEMP.	APPLIANCE DUTY	DESIGN CFM/ft	TOTAL EXH. CFM	EXHAUST PLENUM RISER(S)					TOTAL SUPPLY CFM	HOOD CONSTRUCTION	HOOD CONFIG.			
								WIDTH	LENG.	HEIGHT	DIA.	CFM			VEL.	S.P.	END TO END	ROW
1	HD1-Grill	3650 BD-2	6' 0"	600 Deg.	Heavy	187	1120	10"	10"	4"		1120	1613	-0.754"	0	430 SS Where Exposed	ALONE	ALONE
2	HD1-PSP	246 MISC ACPSP-ONLY	6' 0"	300 Deg.	N/A	0	0								1000	430 SS Where Exposed	ALONE	ALONE
3	HD2-Oven	4412 PS-Ovn	1' 9.25"	300 Deg.	Light	200	700	8"	8"	4"		700	1590	-0.376"	0	430 SS 100%	ALONE	ALONE
4	HD3-Fry	3650 BD-2	4' 2"	600 Deg.	Heavy	189	833	8"	8"	4"		833	1631	-0.616"	0	430 SS Where Exposed	ALONE	ALONE
5	HD3-PSP	246 MISC ACPSP-ONLY	4' 2"	300 Deg.	N/A	0	0								650	430 SS Where Exposed	ALONE	ALONE

FOR QUESTIONS, CALL THE CAPTIVE-AIRE (TRI-STATE) OFFICE
1329 E. KEMPER RD. SUITE 4210
PHONE: (513) 860-5555
joe.hertenstein@captiveaire.com

HOOD INFORMATION

HOOD NO.	TAG	TYPE	QTY.	HEIGHT	LENGTH	EFFICIENCY @ 7 MICRONS	QTY.	TYPE	WIRE GUARD	LOCATION	SIZE	UTILITY CABINET(S)		ELECTRICAL	SWITCHES	FIRE SYSTEM PIPING	HOOD HANGING WGT
												FIRE SYSTEM	SIZE				
1	HD1-Grill	Captrate Solo Filter	4	16"	16"	85% See Filter Spec.	3	L55 Series E26	NO							YES	250 LBS
2	HD1-PSP						0									NO	106 LBS
3	HD2-Oven	SS Baffle w/ Handles	2	10"	20"	30%	0									YES	248 LBS
4	HD3-Fry	Captrate Solo Filter	3	16"	16"	85% See Filter Spec.	2	L55 Series E26	NO	Wall Mnt	12"x48"x24"	Ansul R102	3.0/3.0	SC-E013022MA	2 Light 2 Fan	YES	225 LBS
5	HD3-PSP						0									NO	68 LBS

HOOD OPTIONS

HOOD NO.	TAG	OPTION
1	HD1-Grill	FIELD WRAPPER 14.50" High Front, Left, Right
		BACKSPLASH 104.00" High X 108.00" Long 430 SS Vertical
		RIGHT QUARTER END PANEL 26" Top Width, 0" Bottom Width, 26" High 430 SS
		LEFT QUARTER END PANEL 26" Top Width, 0" Bottom Width, 26" High 430 SS
3	HD2-Oven	SENSOR-CV
		FIELD WRAPPER 14.50" High Front, Left, Right
		BACKSPLASH 104.00" High X 78.00" Long 430 SS Vertical
		BACKSPLASH 48.00" High X 96.00" Long 430 SS Horizontal
4	HD3-Fry	BACKSPLASH - INSIDE CORNER 96.00" High X 2.00" Leg Length 430 SS Vertical
		LEFT QUARTER END PANEL 26" Top Width, 0" Bottom Width, 26" High 430 SS
		RIGHT VERTICAL END PANEL 26" Top Width, 26" Bottom Width, 61" High Insulated 430 SS
		SENSOR-CV
6	Misc Items	OPTIONS ONLY: FIELD WRAPPER 40.00" High x 17.00" Long Back 430 SS
		OPTIONS ONLY: FIELD WRAPPER 40.00" High x 17.00" Long Right 430 SS
		OPTIONS ONLY: FIELD WRAPPER 40.00" High x 17.00" Long Left 430 SS
		OPTIONS ONLY: WRAPPER CHANNEL - 14.00" Long
		OPTIONS ONLY: WRAPPER CHANNEL - 14.00" Long
		OPTIONS ONLY: WRAPPER CHANNEL - 14.00" Long

SPECIFICATION: CAPTRATE GREASE-STOP SOLO FILTER

THE CAPTRATE GREASE-STOP SOLO FILTER IS A SINGLE-STAGE FILTER FEATURING A UNIQUE S-BAFFLE DESIGN IN CONJUNCTION WITH A SLOTTED REAR BAFFLE DESIGN TO DELIVER EXCEPTIONAL FILTRATION EFFICIENCY.

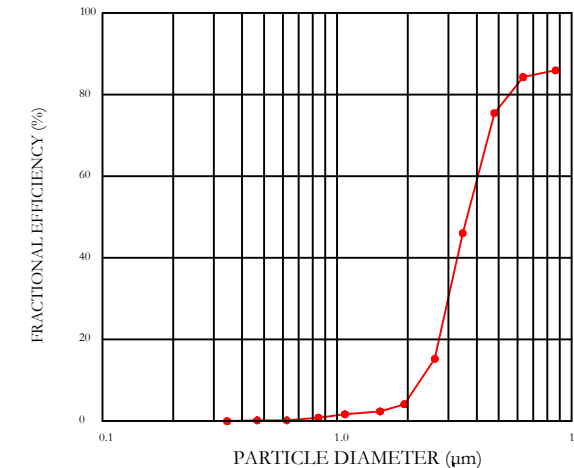
FILTER IS STAINLESS STEEL CONSTRUCTION, AND SIZED TO FIT INTO STANDARD 2-INCH DEEP HOOD CHANNEL(S).

UNITS SHALL INCLUDE STAINLESS STEEL HANDLES AND A FASTENING DEVICE TO SECURE THE TWO COMPONENTS WHEN ASSEMBLED.

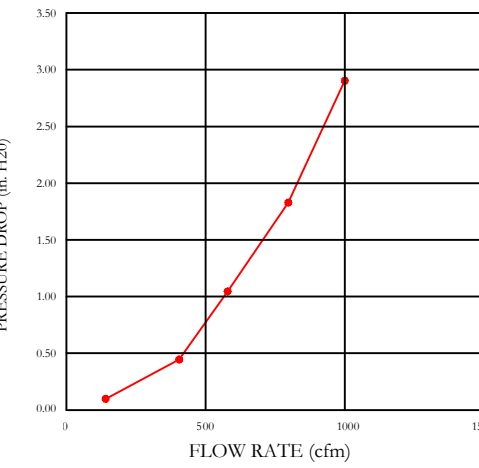
GREASE EXTRACTION EFFICIENCY PERFORMANCE SHALL REMOVE AT LEAST 75% OF GREASE PARTICLES FIVE MICRONS IN SIZE, AND 85% GREASE PARTICLES SEVEN MICRONS IN SIZE AND LARGER, WITH A CORRESPONDING PRESSURE DROP NOT TO EXCEED 1.0 INCHES OF WATER GAUGE.

THE CAPTRATE GREASE-STOP SOLO WAS TESTED TO ASTM STANDARD ASTM F2519-05.

EFFICIENCY VS. PARTICLE DIAMETER



PRESSURE DROP VS. FLOW RATE



CAPTRATE FILTERS ARE BUILT IN COMPLIANCE WITH:

- NFPA #96
- NSF STANDARD #2
- UL STANDARD #1046
- INT. MECH. CODE (IMC)
- ULC-5649



PERFORATED SUPPLY PLENUM(S)

HOOD NO.	TAG	POS.	LENGTH	WIDTH	HEIGHT	TYPE	RISER(S)			
							WIDTH	LENG.	DIA.	CFM
2	HD1-PSP	Front	72"	10"	6"	AC	8"	24"	465	0.123"
		Back	72"	14"	6"	MUA	10"	24"	500	0.138"
5	HD3-PSP	Front	50"	10"	6"	AC	8"	16"	250	0.071"
		Back	50"	14"	6"	MUA	10"	24"	650	0.213"

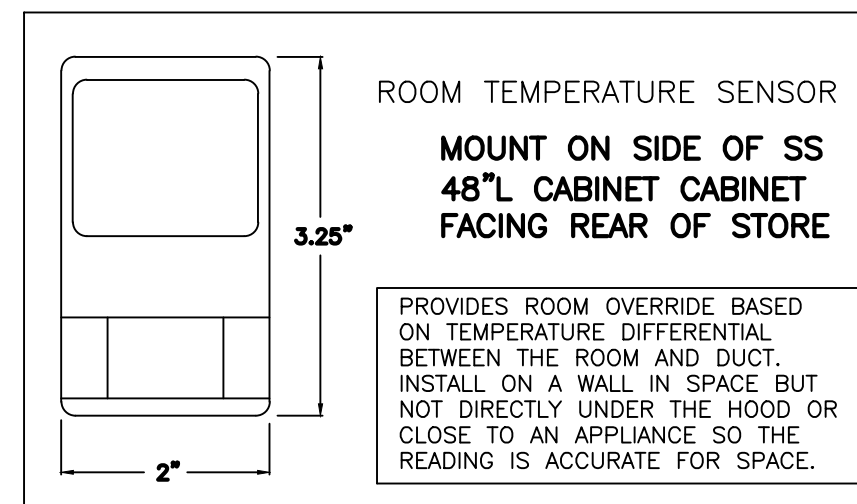
Fire System Information - Job#3592923

FIRE SYSTEM NO.	Tag	TYPE	SIZE	FLOW POINTS	INSTALLATION	
					SYSTEM	LOCATION ON HOOD
1	FS-1	Ansul R102	3.0/3.0	6	Wall Utility Cabinet Left	N/A

GAS VALVE(S)

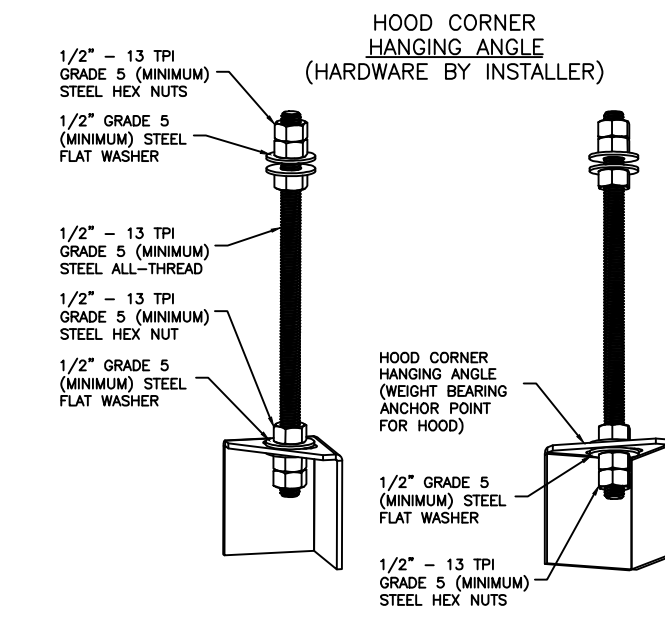
FIRE SYSTEM NO.	TAG	TYPE	SIZE	SUPPLIED BY
1	FS-1	Mechanical	1.250	CaptiveAire Systems

LOCATED IN 48" L X 24" H 12" T SS CABINET MOUNTED NEXT TO GRILL HOOD



ROOM TEMPERATURE SENSOR
MOUNT ON SIDE OF SS 48" L CABINET CABINET FACING REAR OF STORE

PROVIDES ROOM OVERRIDE BASED ON TEMPERATURE DIFFERENTIAL BETWEEN THE ROOM AND DUCT. INSTALL ON A WALL IN SPACE BUT NOT DIRECTLY UNDER THE HOOD OR CLOSE TO AN APPLIANCE SO THE READING IS ACCURATE FOR SPACE.



ASSEMBLY INSTRUCTIONS

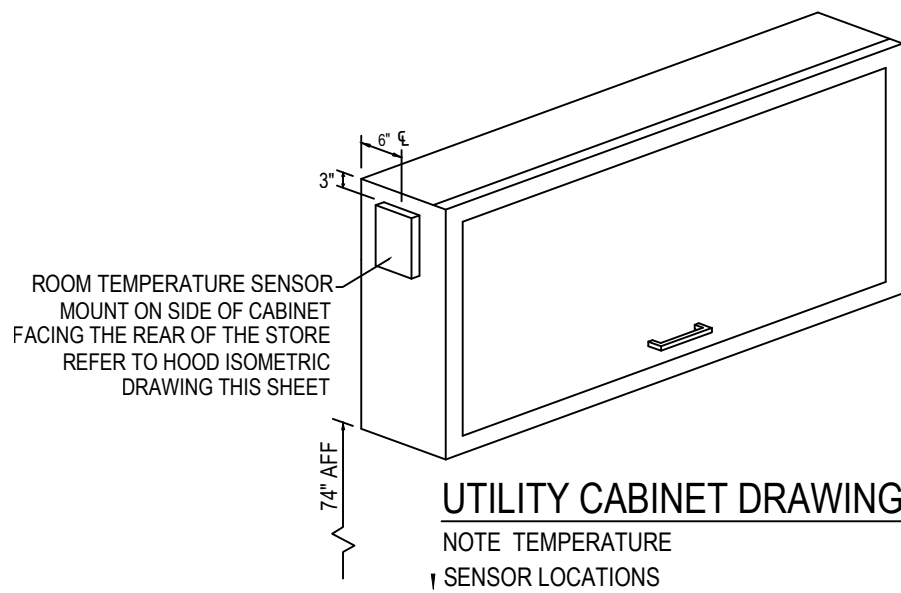
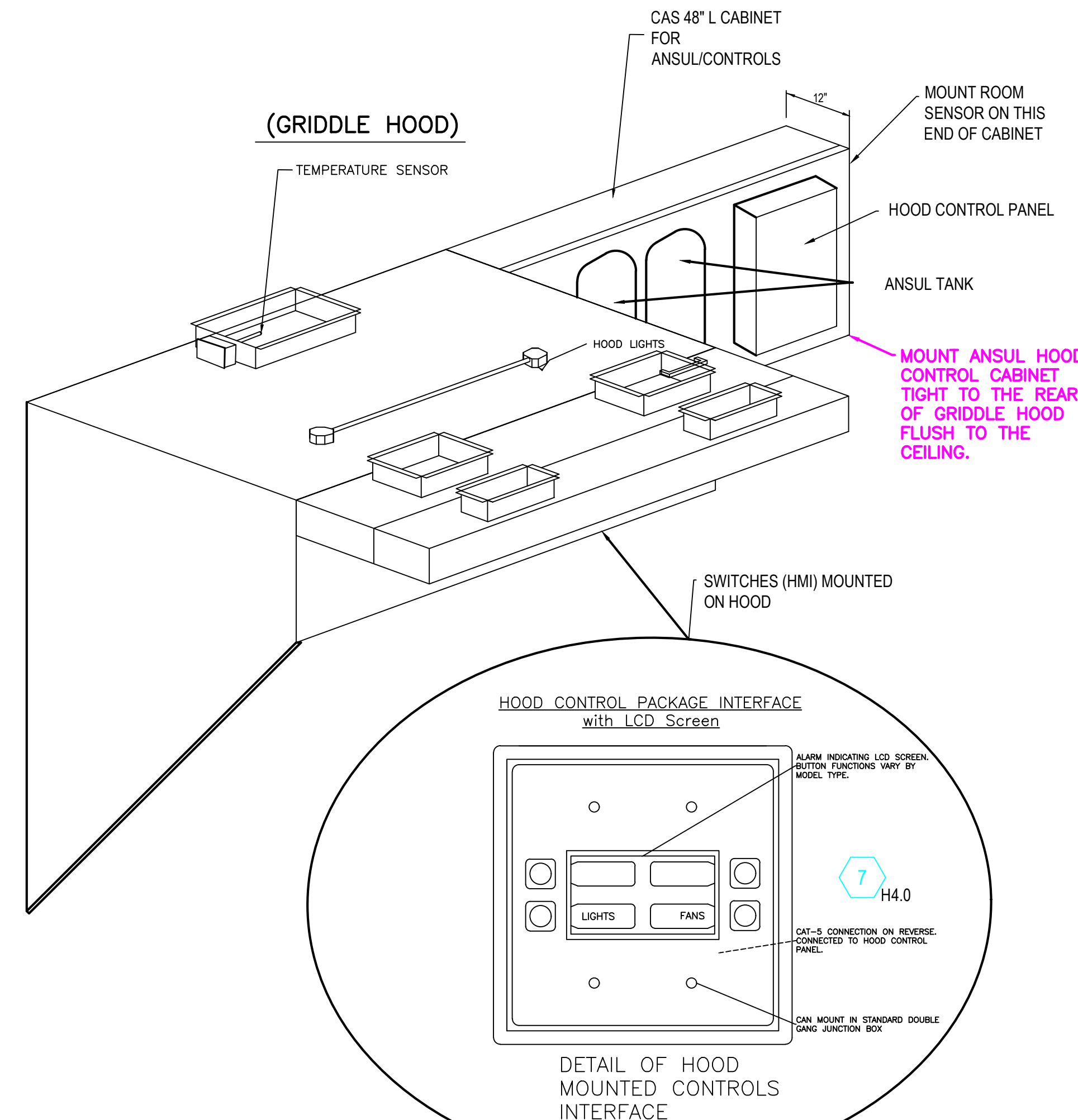
HANGING ANGLE MUST BE SUPPORTED WITH 1/2" - 13 TPI GRADE 5 (MINIMUM) ALL-THREAD, SANDWICH HANGING ANGLES AND CEILING ANCHOR POINTS WITH 1/2" GRADE 5 (MINIMUM) STEEL FLAT WASHERS AND 1/2" - 13 TPI GRADE 5 (MINIMUM) STEEL HEX NUTS. MUST USE DOUBLED HEX NUT CONFIGURATION BENEATH HOOD HANGING ANGLES AND ABOVE CEILING ANCHORS. MAINTAIN 1/4" OF EXPOSED THREADS BENEATH BOTTOM HEX NUT. TORQUE ALL HEX NUTS TO 57 FT-LBS.

CAPTIVE-AIRE HOODS ARE BUILT IN COMPLIANCE WITH UL 710 AND NFPA 96 AND ARE RECOGNIZED BY ONE OR MORE OF THE FOLLOWING:

ETL SANITATION LISTED
ETL LISTED FILE# 3054804-001

HOOD SYSTEM IS FABRICATED & DESIGNED PER UL-710 STANDARDS

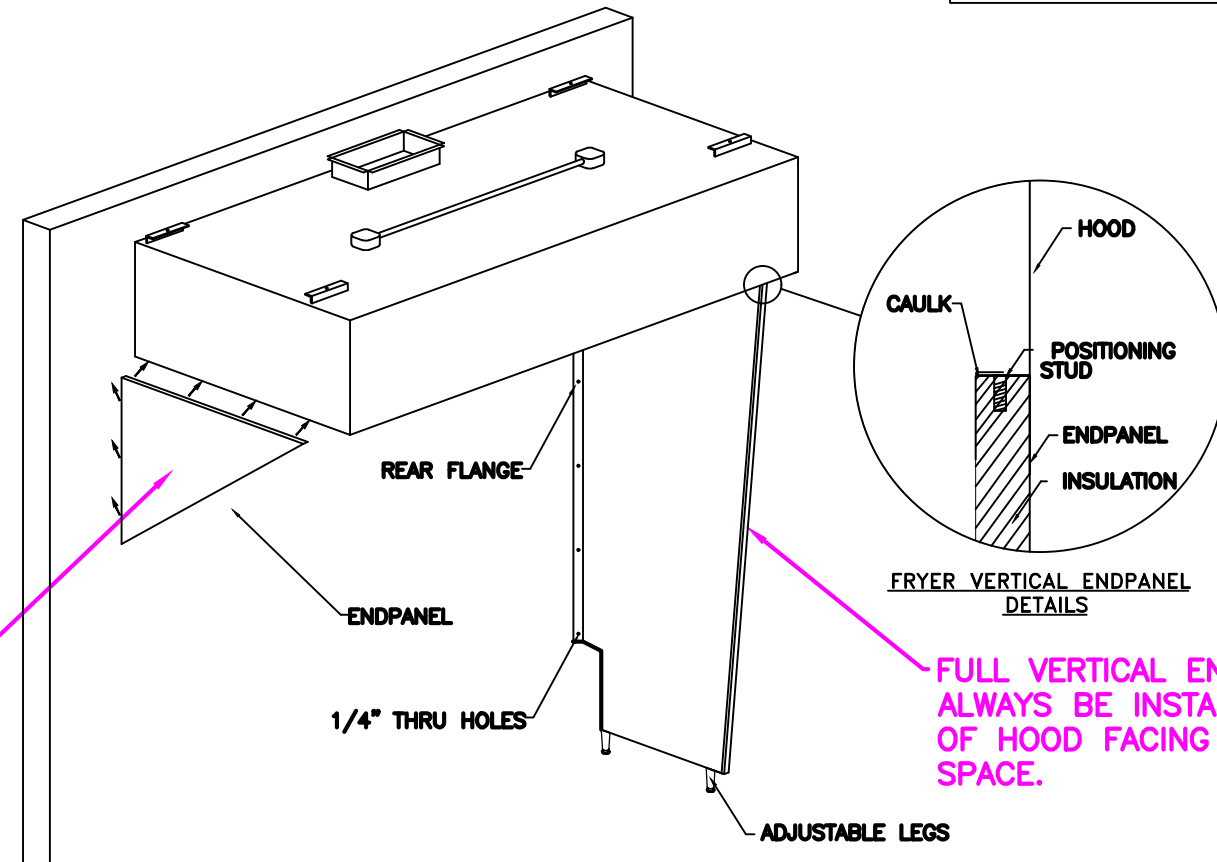
GENERAL WIRING COMPONENTS ONLY (MUST READ ALL DETAILED DIRECTIONS ON THE CAPTIVE-AIRE ELECTRICAL DWG SHEET PROVIDED)



UTILITY CABINET DRAWING
NOTE TEMPERATURE SENSOR LOCATIONS

ROOM TEMPERATURE SENSOR MOUNT ON SIDE OF CABINET FACING REAR OF STORE. REFER TO HOOD ISOMETRIC DRAWING THIS SHEET.

QUARTER END PANEL ON SIDE OF HOOD THAT FACES TO THE FRONT OF THE STORE.



FULL VERTICAL END PANEL TO ALWAYS BE INSTALLED ON THE END OF HOOD FACING TOWARD REAR OF SPACE.

(FRYER HOOD)

REVISIONS

DESCRIPTION	DATE

CAPTIVE-AIRE

Penn Station V2B-R (Dallas, NC)
Dallas, NC, 28034

DATE: 2/25/2022
DWG.#: 5348922
DRAWN BY:
SCALE: 3/4" = 1'-0"
MASTER DRAWING

SHEET NO. 1