



**SUBMITTAL**

**PROJECT:** NC009 HVAC – ELEC – PLUMB RESETS 81<sup>ST</sup>  
READINESS DIVISION  
CONCORD, NC

**ENGINEER:** US ARMY CORPS OF ENGINEERS  
CHARLESTON, SC

**CONTRACTOR:** SUPERIOR MECHANICAL SYSTEMS  
CHARLOTTE, NC

**EQUIPMENT:** EXHAUST FANS BY LOREN COOK

**SUPPLIER:** HAHN-MASON AIR SYSTEMS, INC.  
4901 DWIGHT EVANS ROAD, STE. 120  
CHARLOTTE, NORTH CAROLINA 28217

**SUBMITTED BY:**

A handwritten signature in black ink that reads "David Petrovski". The signature is written in a cursive style and is positioned above a horizontal line.

David Petrovski

HAHN-MASON AIR SYSTEMS, INC.  
P.O. BOX 31248  
CHARLOTTE, NC 28231-1248

Telephone: 704-523-5000

Fax: 704-523-5171

10/24/2022 4:28 PM

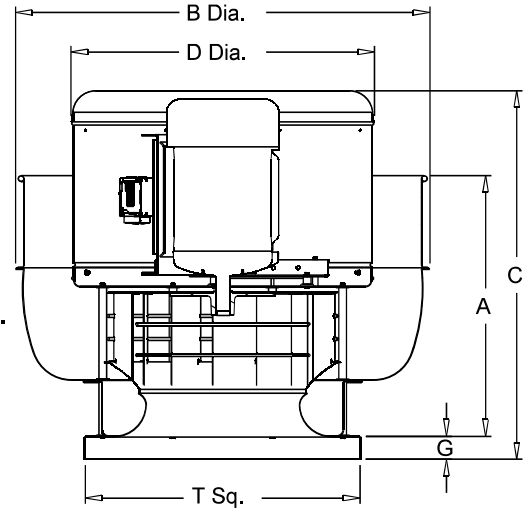


|                                 |
|---------------------------------|
| MARK: KEF-01                    |
| PROJECT: NC009 HVAC PLUMB RESET |
| DATE: 10/23/2022                |

# VCR-D VF

**Upblast Centrifugal Exhaust Ventilator**  
**Roof Mounted/Direct Drive**  
**Electronically Commutated Vari-Flow® Motor**

**STANDARD CONSTRUCTION FEATURES:**  
 All aluminum housing - Backward inclined all aluminum wheel - Two piece top cap with stainless steel quick release latches - One piece bottom spinning - Welded curb cap corners - Permanently lubricated ball bearing motors - Corrosion resistant fasteners - Transit tested packaging.



### Performance

| Qty | Catalog Number | Flow (CFM) | SP (inwc) | Fan RPM | Power (HP) | FEG | FEI | Speed Control |
|-----|----------------|------------|-----------|---------|------------|-----|-----|---------------|
| 1   | 165V17D (VF)   | 3960       | .500      | 1624    | 1.41       | 60  | .80 | EC            |

Altitude (ft): 768 Temperature (F): 70

### Motor Information

| HP    | RPM* | Volts/Ph/Hz | Enclosure | RLA |
|-------|------|-------------|-----------|-----|
| 1-1/2 | 1725 | 208/1/60    | TEFC -EC  | 9   |



\*Motor programmed to max speed of 1659 RPM.  
 RLA based on motor manufacturer's data at programmed HP and max RPM.  
 Motor is electronically/thermally protected.

### Sound Data Inlet Sound Power by Octave Band

| 1  | 2  | 3  | 4  | 5  | 6  | 7  | 8  | LwA | dBA | Sones |
|----|----|----|----|----|----|----|----|-----|-----|-------|
| 88 | 98 | 93 | 85 | 78 | 78 | 73 | 66 | 89  | 78  | 31    |

- Distance from Sound source 5 ft

### Accessories:

- FAN MOUNTED SPEED CONTROL
- DISCONNECT NEMA 3 PRE-WIRED
- EZCLEAN COAT(FAN+WH)
- UL762 (327Y-300DEG)
- KEYWAY GREASE TROUGH
- VE-23 VENTED EXTNSN

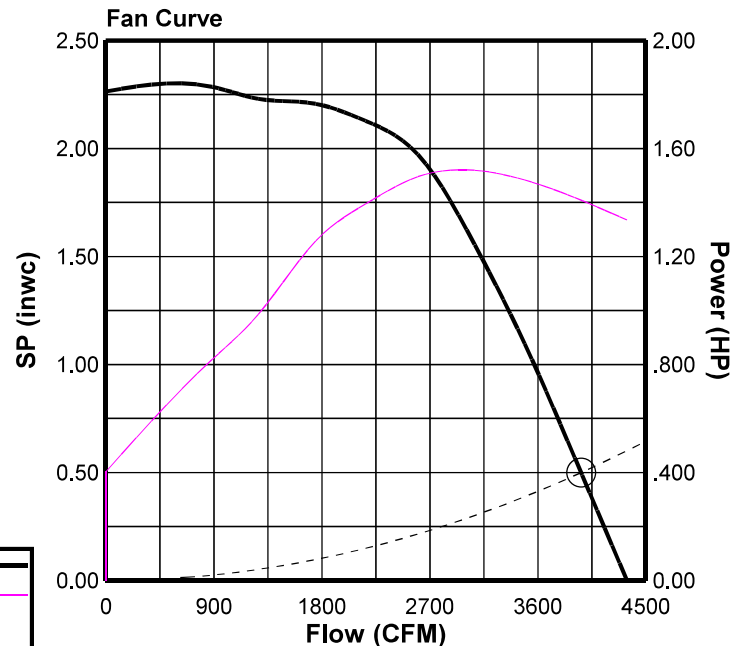
### Dimensions (inches)

|                 |          |
|-----------------|----------|
| A               | 20-15/16 |
| B Dia.          | 34-11/16 |
| C               | 30-3/4   |
| D Dia.          | 23-13/16 |
| G               | 2        |
| T Sq.           | 24       |
| Roof Open. Sq.* | 19-1/2   |

NOTE: Accessories may affect dimensions shown.

| Weight(lbs)** | Shipping | 261 | Unit | 158 |
|---------------|----------|-----|------|-----|
|---------------|----------|-----|------|-----|

\* Roof opening size for curbs supplied by Cook only.  
 \*\*\*Includes fan, motor & accessories.





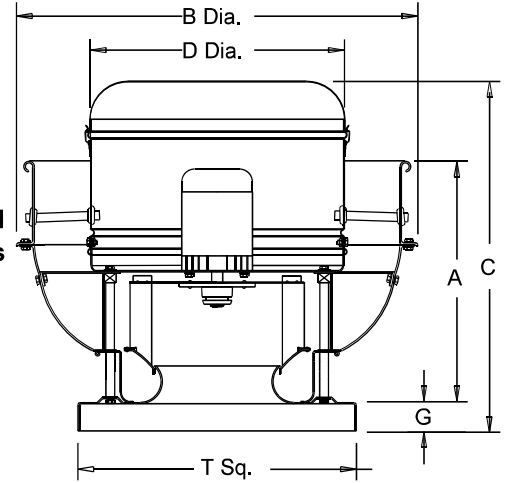
|                                 |
|---------------------------------|
| MARK: KEF-02                    |
| PROJECT: NC009 HVAC PLUMB RESET |
| DATE: 10/23/2022                |

# ACRU-D

## Upblast Centrifugal Exhaust Ventilator Roof Mounted/Direct Drive

### STANDARD CONSTRUCTION FEATURES:

- All aluminum housing - Backward inclined all aluminum wheel - Two piece top cap with stainless steel quick release latches - (size 120 - 300) - Welded curb cap corners - Birdscreen - Permanently lubricated ball bearing motors - Corrosion resistant fasteners - Transit tested packaging.



### Performance

| Qty | Catalog Number | Flow (CFM) | SP (inwc) | Fan RPM | Power (HP) | FEG       | Speed Control |
|-----|----------------|------------|-----------|---------|------------|-----------|---------------|
| 1   | 101R15D        | 680        | .370      | 1529    | .104       | n/a(<1HP) | FSC           |

Altitude (ft): 768 Temperature (F): 70

### Motor Information

| HP  | RPM  | Volts/Ph/Hz | Enclosure | TOL |
|-----|------|-------------|-----------|-----|
| 1/8 | 1550 | 115/1/60    | ODP -SE   | Yes |

### Sound Data Inlet Sound Power by Octave Band

| 1  | 2  | 3  | 4  | 5  | 6  | 7  | 8  | LwA | dBA | Sones |
|----|----|----|----|----|----|----|----|-----|-----|-------|
| 68 | 72 | 76 | 68 | 62 | 58 | 52 | 47 | 70  | 59  | 9.2   |

- Distance from Sound source 5 ft

### Accessories:

- DISCONNECT NEMA 3 PRE-WIRED L-T
- BDM-12 MTR DPR 115V
- FAN SPEED CONTROLLER 5A 120V PREWIRED
- WELDED DRAIN CUPLG
- CURB CAP ADPTR(T-SQ) - 24.5"

### Dimensions (inches)

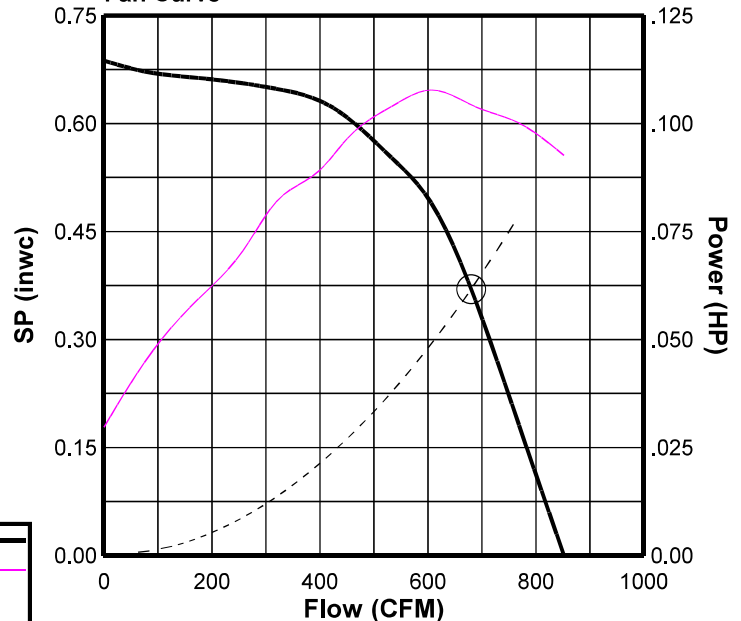
|                 |         |
|-----------------|---------|
| A               | 12-1/2  |
| B               | 24-1/4  |
| C               | 20-3/16 |
| D               | 16-3/4  |
| G               | 2       |
| T Sq.           | 18      |
| Roof Open. Sq.* | 13-1/2  |

NOTE: Accessories may affect dimensions shown.

| Weight(lbs)** | Shipping | 41 | Unit | 31 |
|---------------|----------|----|------|----|
|---------------|----------|----|------|----|

\* Roof opening size for curbs supplied by Cook only.  
\*\*Includes fan, motor & accessories.

### Fan Curve



### Fan Curve Legend

|                    |     |
|--------------------|-----|
| CFM vs SP          | —   |
| CFM vs HP          | —   |
| Point of Operation | ○   |
| System Curve       | --- |

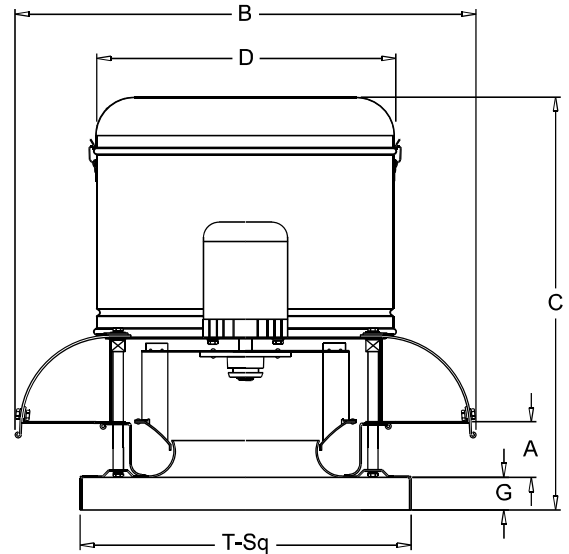


|                                 |
|---------------------------------|
| MARK: EF-01                     |
| PROJECT: NC009 HVAC PLUMB RESET |
| DATE: 10/23/2022                |

# ACE-D VF

**Downblast Centrifugal Exhaust Ventilator**  
**Roof Mounted/Direct Drive**  
**Electronically Commutated Vari-Flow® Motor**

**STANDARD CONSTRUCTION FEATURES:**  
 All aluminum housing - Backward inclined all aluminum wheel - Two piece top cap with stainless steel quick release latches (sizes 120 - 300) - Welded curb cap corners - Birdscreen - Permanently lubricated ball bearing motors - Corrosion resistant fasteners - Transit tested packaging.



### Performance

| Qty | Catalog Number | Flow (CFM) | SP (inwc) | Fan RPM | Power (HP) | FEG       | Speed Control |
|-----|----------------|------------|-----------|---------|------------|-----------|---------------|
| 1   | 120C17D (VF)   | 1100       | .370      | 1262    | .141       | n/a(<1HP) | EC            |

Altitude (ft): 768 Temperature (F): 70

### Motor Information

| HP  | RPM* | Volts/Ph/Hz | Enclosure | RLA |
|-----|------|-------------|-----------|-----|
| 1/6 | 1725 | 208/1/60    | OPEN -EC  | 1.5 |



\*Motor programmed to max speed of 1314 RPM.  
 RLA based on motor manufacturer's data at programmed HP and max RPM.  
 Motor is electronically/thermally protected.

### Sound Data Inlet Sound Power by Octave Band

| 1  | 2  | 3  | 4  | 5  | 6  | 7  | 8  | LwA | dBA | Sones |
|----|----|----|----|----|----|----|----|-----|-----|-------|
| 67 | 70 | 74 | 65 | 61 | 59 | 53 | 48 | 69  | 58  | 8.8   |

- Distance from Sound source 5 ft

### Accessories:

- FAN MOUNTED SPEED CONTROL
- DISCONNECT NEMA 1 PRE-WIRED
- BDM-14 MTR DPR 115V
- CURB CAP ADPTR(T-SQ) - 25.5"

### Dimensions (inches)

|                 |         |
|-----------------|---------|
| A               | 1-7/16  |
| B O.D.          | 28-7/16 |
| C               | 27-1/16 |
| D O.D.          | 20-3/8  |
| G               | 2       |
| T Sq.           | 20      |
| Roof Open. Sq.* | 15-1/2  |

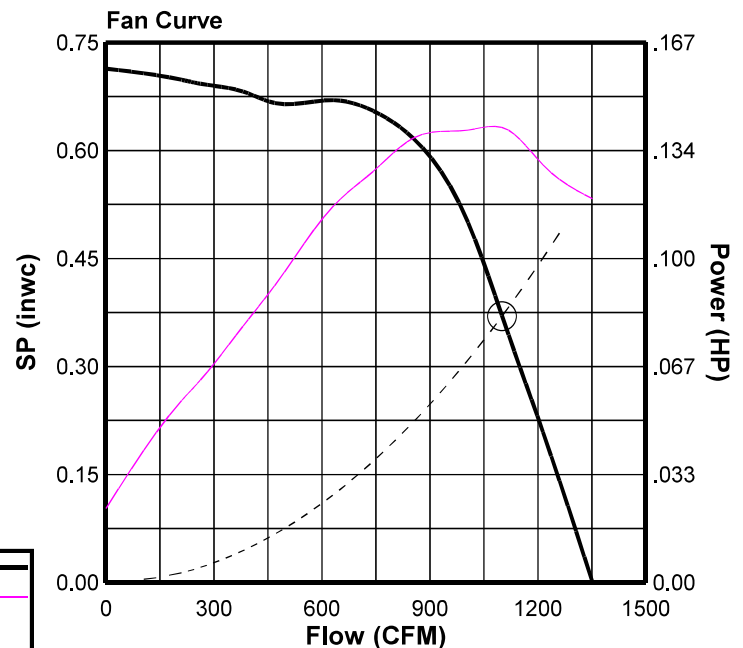
NOTE: Accessories may affect dimensions shown.

|               |          |    |      |    |
|---------------|----------|----|------|----|
| Weight(lbs)** | Shipping | 54 | Unit | 38 |
|---------------|----------|----|------|----|

\* Roof opening size for curbs supplied by Cook only.  
 \*\*\*Includes fan, motor & accessories.

### Fan Curve Legend

|                    |   |
|--------------------|---|
| CFM vs SP          | — |
| CFM vs HP          | — |
| Point of Operation | ○ |
| System Curve       | — |





# COOK



MARK: EF-02

PROJECT: NC009 HVAC PLUMB RESET

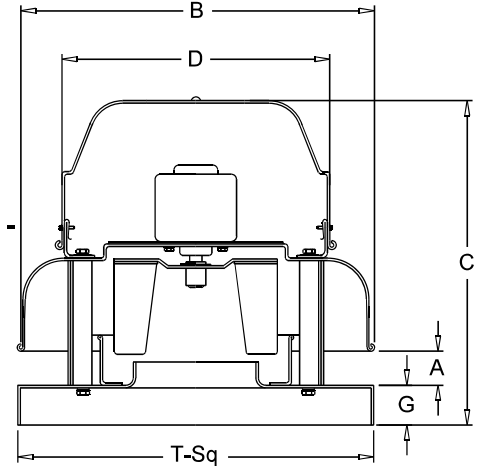
DATE: 10/23/2022

## ACE-D

### Downblast Centrifugal Exhaust Ventilator Roof Mounted/Direct Drive

#### STANDARD CONSTRUCTION FEATURES:

All aluminum housing - Backward inclined all aluminum wheel - Two piece top cap with stainless steel quick release latches (sizes 120 - 300) - Welded curb cap corners - Birdscreen - Permanently lubricated ball bearing motors - Corrosion resistant fasteners - Transit tested packaging.



#### Performance

| Qty | Catalog Number | Flow (CFM) | SP (inwc) | Fan RPM | Input Watts | FEG       | FEI  | Speed Control |
|-----|----------------|------------|-----------|---------|-------------|-----------|------|---------------|
| 1   | 70C15DH        | 150        | .170      | 1253    | 67          | n/a(<1HP) | 1.58 | FSC           |

Altitude (ft): 768 Temperature (F): 70

#### Motor Information

| HP   | RPM  | Volts/Ph/Hz | Enclosure | TOL |
|------|------|-------------|-----------|-----|
| 1/20 | 1550 | 115/1/60    | ODP -SE   | Yes |

#### Sound Data Inlet Sound Power by Octave Band

| 1  | 2  | 3  | 4  | 5  | 6  | 7  | 8  | LwA | dBA | Sones |
|----|----|----|----|----|----|----|----|-----|-----|-------|
| 62 | 61 | 59 | 49 | 44 | 43 | 38 | 35 | 54  | 43  | 3.4   |

- Distance from Sound source 5 ft

#### Accessories:

DISCONNECT NEMA 1 PRE-WIRED  
BDM-12 MTR DPR 115V  
FAN SPEED CONTROLLER 5A 120V PREWIRED  
CURB CAP ADPTR(T-SQ) - 24.5"

#### Dimensions (inches)

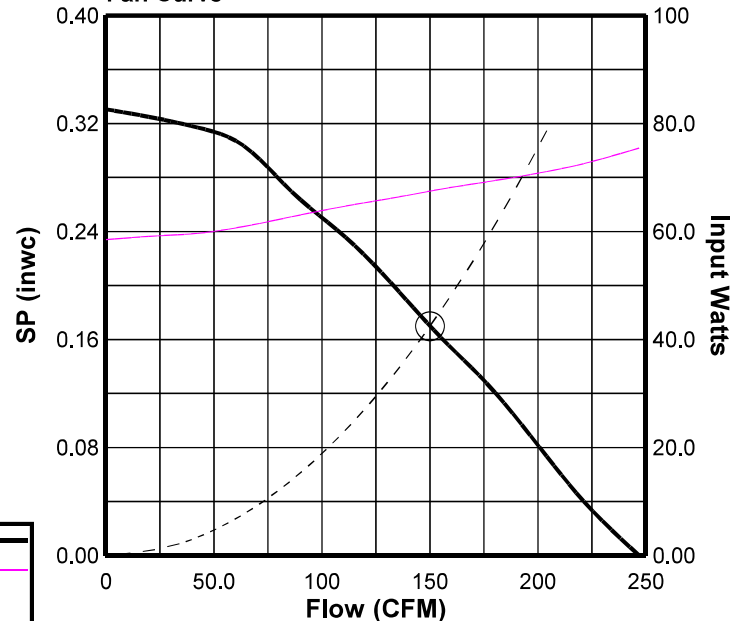
|                 |          |
|-----------------|----------|
| A               | 1-3/4    |
| B O.D.          | 13-5/8   |
| C               | 13-13/16 |
| D O.D.          | 16-3/4   |
| G               | 2        |
| T Sq.           | 18       |
| Roof Open. Sq.* | 13-1/2   |

NOTE: Accessories may affect dimensions shown.

|               |          |    |      |    |
|---------------|----------|----|------|----|
| Weight(lbs)** | Shipping | 31 | Unit | 26 |
|---------------|----------|----|------|----|

\* Roof opening size for curbs supplied by Cook only.  
\*\*Includes fan, motor & accessories.

#### Fan Curve



#### Fan Curve Legend

|                    |     |
|--------------------|-----|
| CFM vs SP          | —   |
| CFM vs Watts       | —   |
| Point of Operation | ○   |
| System Curve       | --- |

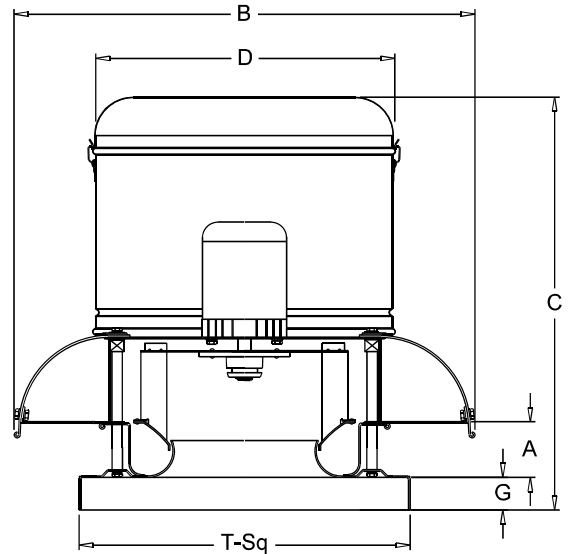


|                                 |
|---------------------------------|
| MARK: EF-03                     |
| PROJECT: NC009 HVAC PLUMB RESET |
| DATE: 10/23/2022                |

# ACE-D VF

**Downblast Centrifugal Exhaust Ventilator  
Roof Mounted/Direct Drive  
Electronically Commutated Vari-Flow® Motor**

**STANDARD CONSTRUCTION FEATURES:**  
All aluminum housing - Backward inclined all aluminum wheel - Two piece top cap with stainless steel quick release latches (sizes 120 - 300) - Welded curb cap corners - Birdscreen - Permanently lubricated ball bearing motors - Corrosion resistant fasteners - Transit tested packaging.



### Performance

| Qty | Catalog Number | Flow (CFM) | SP (inwc) | Fan RPM | Power (HP) | FEG       | Speed Control |
|-----|----------------|------------|-----------|---------|------------|-----------|---------------|
| 1   | 120C17D (VF)   | 1100       | .570      | 1366    | .178       | n/a(<1HP) | EC            |

Altitude (ft): 768 Temperature (F): 70

### Motor Information

| HP  | RPM* | Volts/Ph/Hz | Enclosure | RLA |
|-----|------|-------------|-----------|-----|
| 1/4 | 1725 | 208/1/60    | OPEN -EC  | 2.1 |



\*Motor programmed to max speed of 1505 RPM.  
RLA based on motor manufacturer's data at programmed HP and max RPM.  
Motor is electronically/thermally protected.

### Sound Data Inlet Sound Power by Octave Band

| 1  | 2  | 3  | 4  | 5  | 6  | 7  | 8  | LwA | dBA | Sones |
|----|----|----|----|----|----|----|----|-----|-----|-------|
| 69 | 72 | 75 | 66 | 62 | 61 | 54 | 50 | 70  | 59  | 9.4   |

- Distance from Sound source 5 ft

### Accessories:

- FAN MOUNTED SPEED CONTROL
- DISCONNECT NEMA 1 PRE-WIRED
- BDM-14 MTR DPR 115V
- CURB CAP ADPTR(T-SQ) - 24.5"

### Dimensions (inches)

|                 |         |
|-----------------|---------|
| A               | 1-7/16  |
| B O.D.          | 28-7/16 |
| C               | 27-1/16 |
| D O.D.          | 20-3/8  |
| G               | 2       |
| T Sq.           | 20      |
| Roof Open. Sq.* | 15-1/2  |

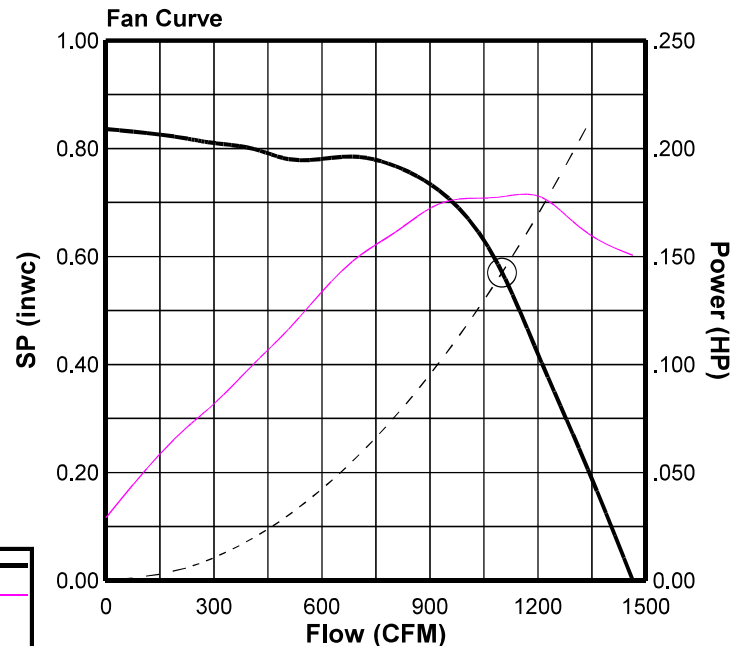
NOTE: Accessories may affect dimensions shown.

|                |          |    |      |    |
|----------------|----------|----|------|----|
| Weight(lbs)*** | Shipping | 54 | Unit | 38 |
|----------------|----------|----|------|----|

\* Roof opening size for curbs supplied by Cook only.  
\*\*\*Includes fan, motor & accessories.

### Fan Curve Legend

|                    |   |
|--------------------|---|
| CFM vs SP          | — |
| CFM vs HP          | — |
| Point of Operation | ○ |
| System Curve       | — |





# COOK



MARK: EF-04

PROJECT: NC009 HVAC PLUMB RESET

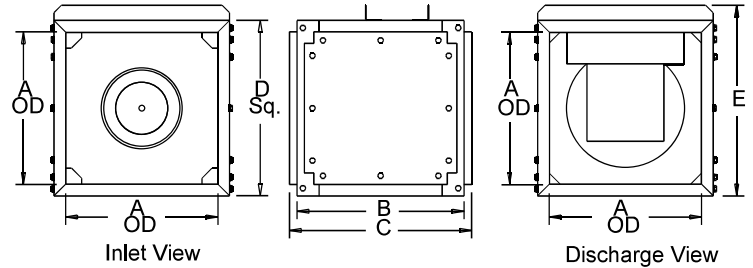
DATE: 10/23/2022

## SQN-D

### Centrifugal Square Inline Direct Drive

#### STANDARD CONSTRUCTION FEATURES:

- All aluminum wheel - Galvanized steel housing - Three removable access doors - Closed cell neoprene gasketing - Inlet and discharge duct collars - Universal mounting feet - Permanently lubricated motor - Transit tested packaging.



#### Performance

| Qty | Catalog Number | Flow (CFM) | SP (inwc) | Fan RPM | Input Watts | FEG       | FEI  | Speed Control |
|-----|----------------|------------|-----------|---------|-------------|-----------|------|---------------|
| 1   | 100SQN12D      | 600        | .250      | 1338    | 128         | n/a(<1HP) | 1.44 | FSC           |

Altitude (ft): 768 Temperature (F): 70

#### Motor Information

| HP  | RPM  | Volts/Ph/Hz | Enclosure | TOL |
|-----|------|-------------|-----------|-----|
| 1/6 | 1200 | 115/1/60    | TENV -SE  | Yes |

#### Sound Data Sound Power by Octave Band

|        | 1  | 2  | 3  | 4  | 5  | 6  | 7  | 8  | LwA | dBA | Sones |
|--------|----|----|----|----|----|----|----|----|-----|-----|-------|
| Inlet  | 62 | 60 | 64 | 58 | 53 | 49 | 45 | 39 | 60  | 48  | 4.8   |
| Outlet | 75 | 60 | 62 | 56 | 57 | 53 | 46 | 39 | 61  | 50  | 5.4   |

- Distance from Sound source 5 ft

#### Accessories:

- DISCONNECT NEMA 1 PRE-WIRED
- BDM-12 MTR DPR 115V
- INSULATED HOUSING
- FAN SPEED CONTROLLER 5A 120V PREWIRED
- SC-35 SET(4) - ISOLATORS

#### Dimensions (inches)

|       |         |
|-------|---------|
| A     | 12      |
| B     | 20      |
| C     | 22      |
| D Sq. | 14      |
| E     | 15-9/16 |

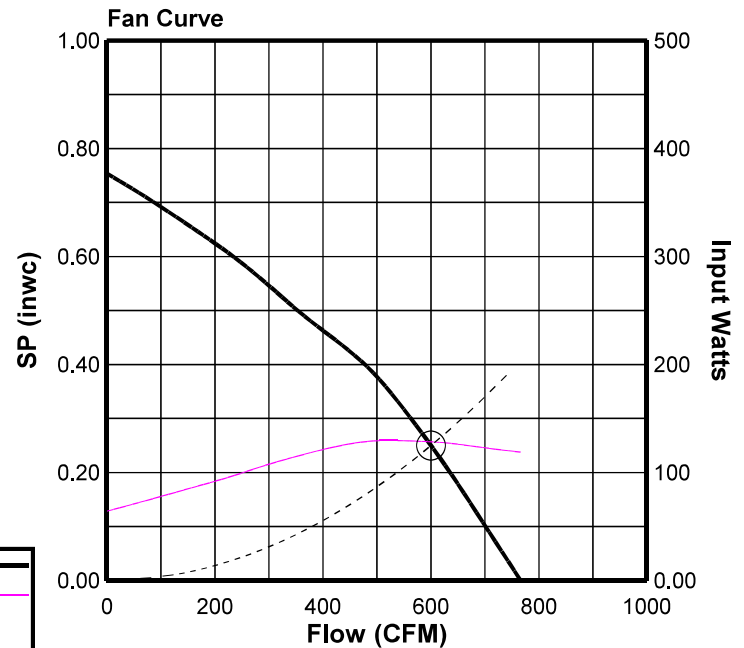
NOTE: Accessories may affect dimensions shown.

|                |          |    |      |    |
|----------------|----------|----|------|----|
| Weight(lbs)*** | Shipping | 79 | Unit | 76 |
|----------------|----------|----|------|----|

\*\*\*Includes fan, motor & accessories.

#### Fan Curve Legend

|                    |   |
|--------------------|---|
| CFM vs SP          | — |
| CFM vs Watts       | — |
| Point of Operation | ○ |
| System Curve       | — |



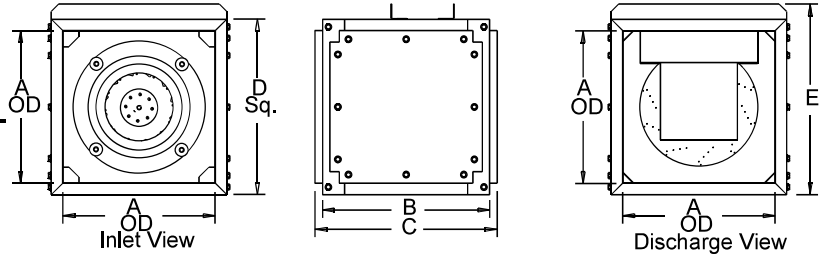


|                                 |
|---------------------------------|
| MARK: EF-05                     |
| PROJECT: NC009 HVAC PLUMB RESET |
| DATE: 10/23/2022                |

# SQN-D VF

**Centrifugal Square Inline  
Direct Drive  
Preprogrammed EC  
Electronically Commutated Vari-Flow® Motor**

**STANDARD CONSTRUCTION FEATURES:**  
 All aluminum wheel - Galvanized 18 gauge steel housing - Three removable access doors - Closed cell neoprene gasketing - Inlet and discharge duct collars - Universal mounting feet - Preprogrammed EC electronically commutated Vari-Flow® motor/drive package - Transit tested packaging.



### Performance

| Qty | Catalog Number | Flow (CFM) | SP (inwc) | Fan RPM | Power (HP) | FEG       | Speed Control |
|-----|----------------|------------|-----------|---------|------------|-----------|---------------|
| 1   | 165SQN17D (VF) | 3450       | .380      | 1472    | .906       | n/a(<1HP) | EC            |

Altitude (ft): 768 Temperature (F): 70

### Motor Information

| HP | RPM* | Volts/Ph/Hz | Enclosure | RLA |
|----|------|-------------|-----------|-----|
| 1  | 1725 | 208/1/60    | OPEN -EC  | 7.3 |



\*Motor programmed to max speed of 1497 RPM.  
 RLA based on motor manufacturer's data at programmed HP and max RPM.  
 Motor is electronically/thermally protected.

### Sound Data Sound Power by Octave Band

|        | 1  | 2  | 3  | 4  | 5  | 6  | 7  | 8  | LwA | dBA | Sones |
|--------|----|----|----|----|----|----|----|----|-----|-----|-------|
| Inlet  | 74 | 80 | 88 | 85 | 77 | 73 | 69 | 63 | 85  | 74  | 21.2  |
| Outlet | 82 | 83 | 77 | 77 | 78 | 77 | 71 | 63 | 82  | 71  | 19.5  |

- Distance from Sound source 5 ft

### Accessories:

- FAN MOUNTED SPEED CONTROL
- DISCONNECT NEMA 1 PRE-WIRED
- BDM-22 MTR DPR 115V
- INSULATED HOUSING
- SC-70 SET(4) - ISOLATORS

### Dimensions (inches)

|               |         |
|---------------|---------|
| A             | 22      |
| B             | 25      |
| C             | 27      |
| D Sq          | 25-5/16 |
| E             | 27-3/8  |
| Housing Gauge | 18      |

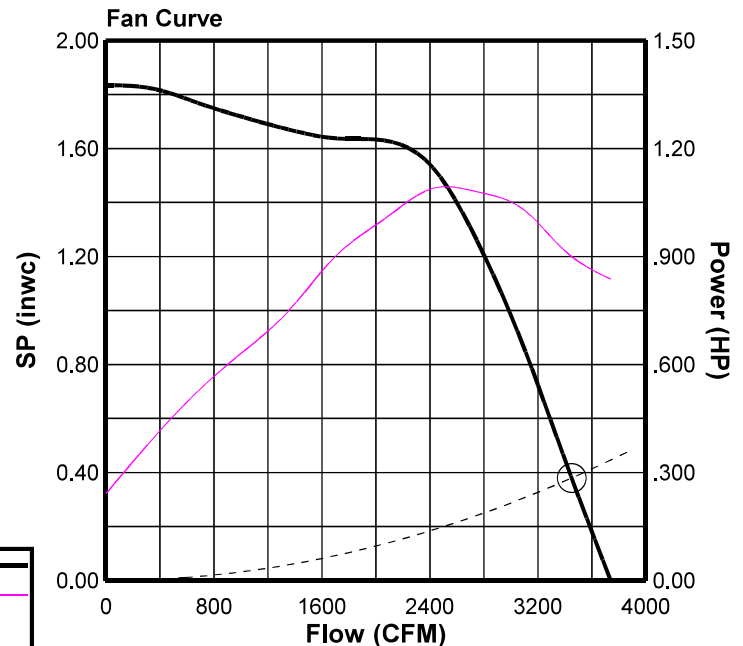
NOTE: Accessories may affect dimensions shown.

|                |          |     |      |     |
|----------------|----------|-----|------|-----|
| Weight(lbs)*** | Shipping | 238 | Unit | 146 |
|----------------|----------|-----|------|-----|

\*\*\*Includes fan, motor & accessories.

### Fan Curve Legend

|                    |   |
|--------------------|---|
| CFM vs SP          | — |
| CFM vs HP          | — |
| Point of Operation | ○ |
| System Curve       | — |





# COOK



MARK: KSF-01

PROJECT: NC009 HVAC PLUMB RESET

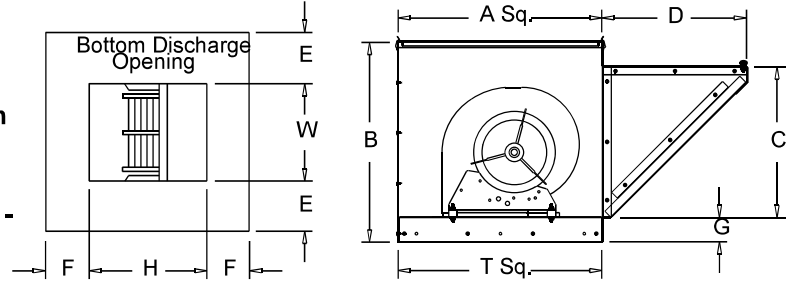
DATE: 10/23/2022

## KSP-B

### Filtered Kitchen Supply Packaged Ventilator Belt Drive

#### STANDARD CONSTRUCTION FEATURES:

DWDI blower mounted in a totally enclosed galvanized cabinet with hooded, filtered intake - Insulated top cap with quick release latches - Permanent, one inch, washable, aluminum filters (fiberglass or polyester media available) - Adjustable pitch drives through 5 H.P. - Vibration isolators - Corrosion resistant fasteners - All fans factory adjusted to specified fan RPM.



#### Performance (\*Bhp includes 7% drive loss)

| Qty | Catalog Number | Flow (CFM) | SP (inwc) | Fan RPM | Power* (HP) | FEG | FEI |
|-----|----------------|------------|-----------|---------|-------------|-----|-----|
| 1   | 120KSP-B       | 3600       | .500      | 970     | 1.59        | 60  | .76 |

Altitude (ft): 768 Temperature (F): 70

#### Motor Information

| HP | RPM  | Volts/Ph/Hz | Enclosure | FLA  | Mounted |
|----|------|-------------|-----------|------|---------|
| 2  | 1725 | 208/1/60    | ODP -SE   | 13.2 | Yes     |

FLA based on NEC (2017) Table 430.248

#### Sound Data Outlet Sound Power by Octave Band

| 1   | 2  | 3  | 4  | 5  | 6  | 7  | 8  | LwA | dBA | Sones |
|-----|----|----|----|----|----|----|----|-----|-----|-------|
| 100 | 93 | 85 | 83 | 80 | 77 | 75 | 69 | 86  | 75  | 29    |

- Distance from Sound source 5 ft

#### Accessories:

- DRIVES (1.5 SF) @ 970 RPM
- DISCONNECT NEMA 3 PRE-WIRED L-T
- BDMI-26 MTR DPR 115V
- ROOF CURB 120 KSP COMMON CURB-13.5H -LESS NLR
- INTAKE EXTENSION
- 12-18/24 CURB CAP
- REPLACEMENT FILTER
- LIFTING LUGS/TIE DWN
- SPARE BELT SET

#### Dimensions (inches)

|            |                  |
|------------|------------------|
| A Sq.      | 32-3/16          |
| B          | 32-1/4           |
| C          | 26-3/16 x 26-1/2 |
| D          | 25-5/8           |
| E          | 8-3/8            |
| F          | 8-3/4            |
| G          | 3                |
| T Sq.      | 32-1/8           |
| H x W      | 13-5/16 x 15-3/8 |
| Filter Qty | 1                |

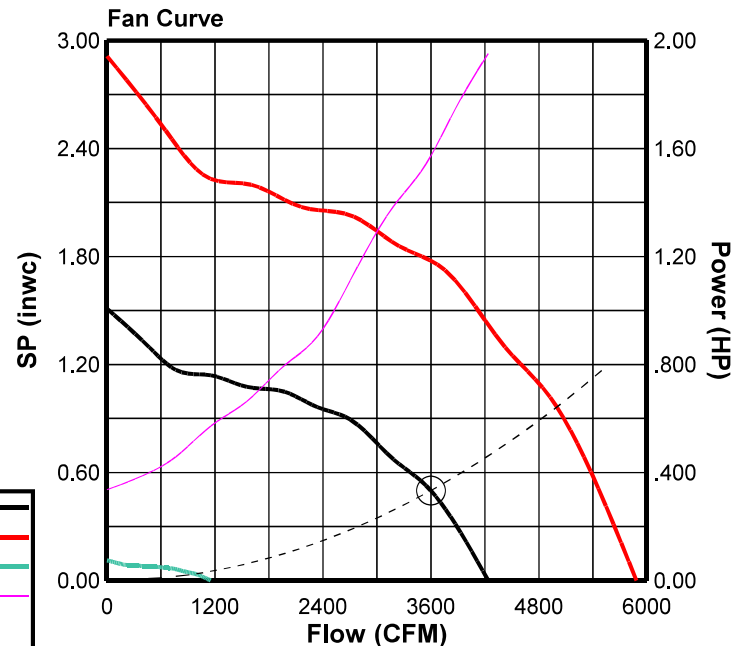
|                |             |
|----------------|-------------|
| Filters Size   | 25-3/4 x 30 |
| Roof Open Sq.* | 27-1/2      |

NOTE: Accessories may affect dimensions shown.

|                |          |     |      |     |
|----------------|----------|-----|------|-----|
| Weight(lbs)*** | Shipping | 953 | Unit | 684 |
|----------------|----------|-----|------|-----|

\*Roof opening size for curbs supplied by Cook only.

\*\*\*Includes fan, motor & accessories.





# COOK

PROJECT: NC009 HVAC PLUMB RESET

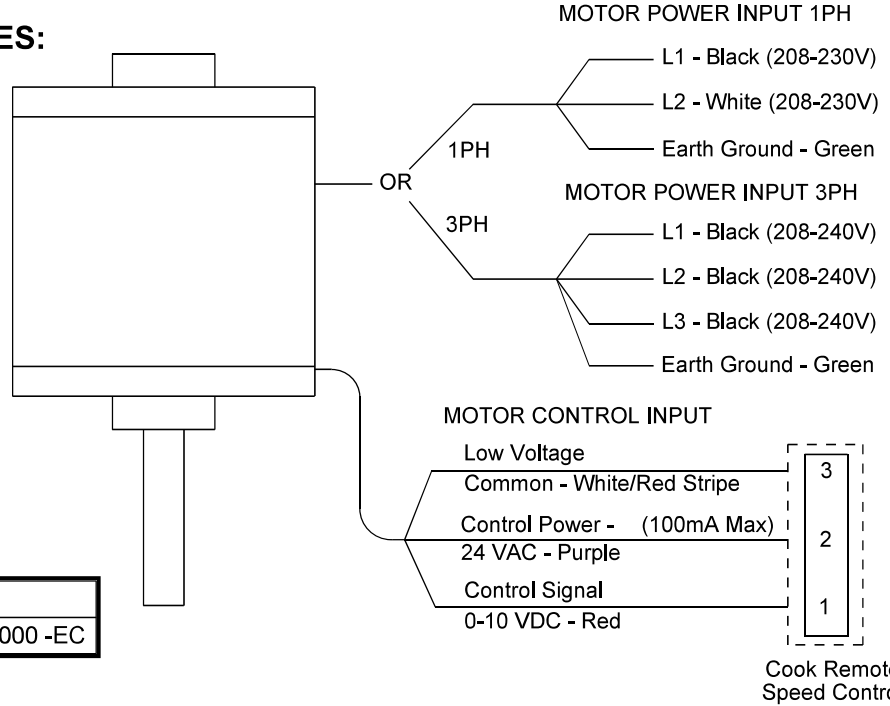
DATE: 10/23/2022

## Speed Control

### Internal Speed Control Electronically Commutated (EC) Motor Type T

#### STANDARD CONSTRUCTION FEATURES:

Motor has an adjustable speed range of 350 to 1800 - Factory mounted potentiometer included for adjusting motor speed.



#### Dimensions (inches)

| Mark   | Qty | Description                                 |
|--------|-----|---|
| KEF-01 | 1   | TEFC -1 1/2HP - 208V/1 PH/ 60 1725/0000 -EC |



# COOK

PROJECT: NC009 HVAC PLUMB RESET

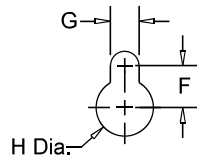
DATE: 10/23/2022

## Grease Trough

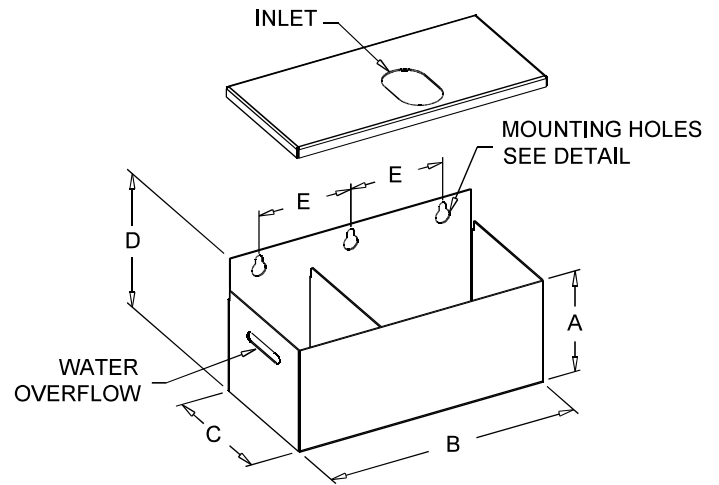
### Keyway Mount

#### STANDARD CONSTRUCTION FEATURES:

All aluminum .063 construction - Continuously welded trough housing corners - Removable lid for servicing - Slotted mounting holes for easy removal - Baffled design for extended capacity.



MOUNTING HOLE DETAIL



#### Dimensions (inches)

| Mark   | Qty | Description          | A | B  | C      | D     | E     | F   | G   | H Dia. |
|--------|-----|----------------------|---|----|--------|-------|-------|-----|-----|--------|
| KEF-01 | 1   | KEYWAY GREASE TROUGH | 5 | 12 | 6-1/16 | 6-1/2 | 4-1/2 | 1/2 | 3/8 | 11/16  |



## VENTED EXTENSION

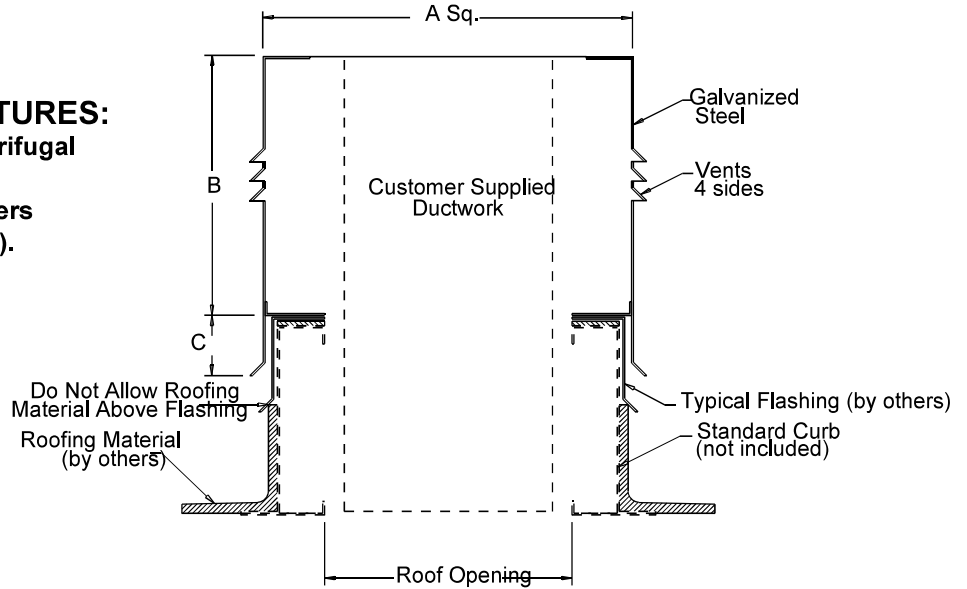
### Galvanized Extension Centrifugal Units

#### STANDARD CONSTRUCTION FEATURES:

Minimum 20 gauge galvanized steel - Centrifugal  
Roof Exhausters use the standard vented  
extension (VE) - Low Profile Roof Exhausters  
use the heavy-duty vented extension (VEH).

#### Note:

Roof opening size for curbs supplied  
by Cook Only.



#### Dimensions (inches)

| Mark   | Qty | Description         | Cat.No. | A Sq. | B  | C     | Roof Opening |
|--------|-----|---------------------|---------|-------|----|-------|--------------|
| KEF-01 | 1   | VE-23 VENTED EXTNSN | VE-23   | 23    | 16 | 3-3/4 | 19-1/2       |



## BDM

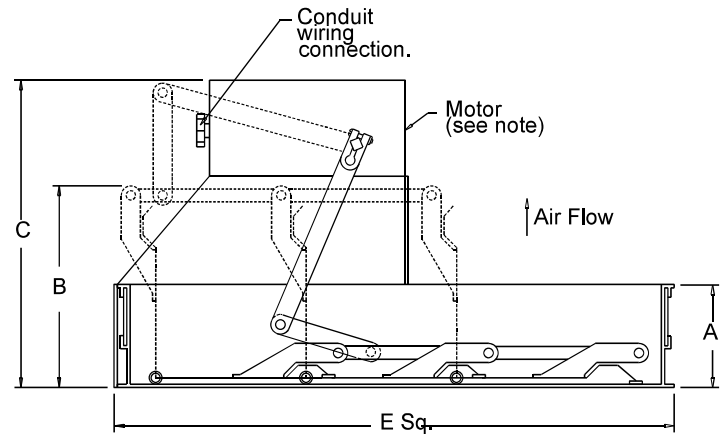
### Motorized Backdraft Damper

#### STANDARD CONSTRUCTION FEATURES:

- .020 aluminum blades - .060 aluminum frame - Aluminum hinge pins - Brass bushings - Non-overloading motor.

#### Notes:

Max operating temperature 130 Deg F (50 Deg C)



#### Dimensions (inches)

| Mark   | Qty | Description         | A     | B Max  | C | E Sq.  | # Motors |
|--------|-----|---------------------|-------|--------|---|--------|----------|
| KEF-02 | 1   | BDM-12 MTR DPR 115V | 1-7/8 | 5-3/16 | 8 | 11-3/4 | 1        |
| EF-01  | 1   | BDM-14 MTR DPR 115V | 1-7/8 | 5-3/16 | 8 | 13-3/4 | 1        |
| EF-02  | 1   | BDM-12 MTR DPR 115V | 1-7/8 | 5-3/16 | 8 | 11-3/4 | 1        |
| EF-03  | 1   | BDM-14 MTR DPR 115V | 1-7/8 | 5-3/16 | 8 | 13-3/4 | 1        |
| EF-04  | 1   | BDM-12 MTR DPR 115V | 1-7/8 | 5-3/16 | 8 | 11-3/4 | 1        |
| EF-05  | 1   | BDM-22 MTR DPR 115V | 1-7/8 | 5-3/16 | 8 | 21-3/4 | 1        |



## FSC

### Fan Speed Controls

#### STANDARD CONSTRUCTION FEATURES:

**PRODUCT DESCRIPTION** - Through the "Quadrac" integrated semi-conductor device it is now possible to offer this system with many advantages. Fewer semi-conductor parts mean greater reliability and the passivation process used in the manufacture of the semi-conductor insures long life.

Printed circuit construction eliminates wiring difficulties and guarantees workmanship.

All of these factors serve to offer the most important of all features - quality.

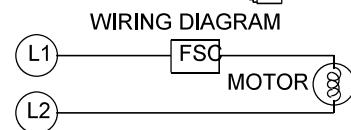
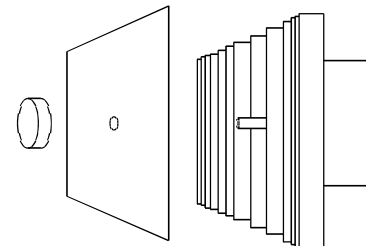
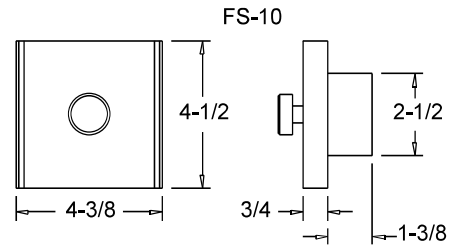
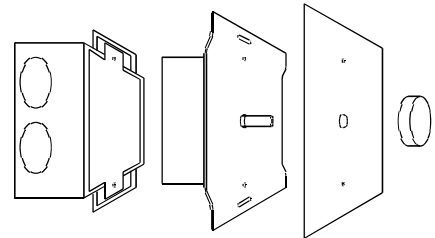
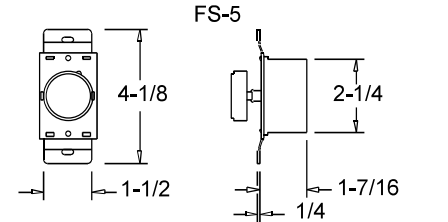
**SPEED CONTROL** - Positive Off/On action in the control dial. Speed range set to the customer's requirements. **CONTROL RATING** - 120 volts, 60 cycles, 1 phase. Maximum ambient temperature - 120 degree F (5 AMP, 10 AMP, 15 AMP). 220/240 volt, 50/60 cycles, 1 phase. Maximum ambient temperature - 120 degree F (5 AMP, 10 AMP). 220/240 volt model not UL listed. Fan cannot have UL listing if furnished with prewired 220/240 volt FSC. 277 volt, 60 cycles, 1 phase.

Maximum ambient temperature - 120 degree F (5 AMP). **WARNING** - Power must be turned off before installing this unit. **STANDARD INSTALLATION** - Fits any standard single gang box.

Turn off power and connect the two wires on the control to the two switch wires in the usual manner. The connection box is not supplied. **SPECIAL FEATURES** - Complete range control, solid state "Quadrac" integrated circuitry, solid state construction for long reliable operating life, saves on electric bills.

#### Dimensions (inches)

| Mark   | Qty | Description          |
|--------|-----|----------------------|
| KEF-02 | 1   | FSC 5A 120V PREWIRED |
| EF-02  | 1   | FSC 5A 120V PREWIRED |
| EF-04  | 1   | FSC 5A 120V PREWIRED |





# COOK

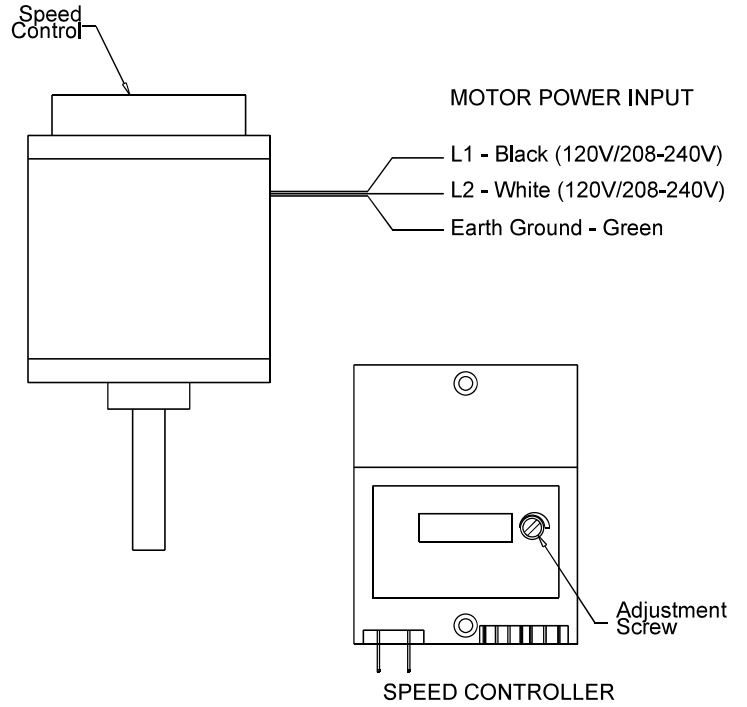
PROJECT: NC009 HVAC PLUMB RESET

DATE: 10/23/2022

## Speed Control

### Internal Speed Control Electronically Commutated (EC) Motor Type N

**STANDARD CONSTRUCTION FEATURES:**  
Some motors come with a factory programmed maximum RPM for specific applicaitons - Integral potentiometer with slotted screw for speed adjustment.



### Dimensions (inches)

| Mark  | Qty | Description                               |
|-------|-----|---|
| EF-01 | 1   | OPEN -1/6HP - 208V/1 PH/ 60 1725/0000 -EC |
| EF-03 | 1   | OPEN -1/4HP - 208V/1 PH/ 60 1725/0000 -EC |
| EF-05 | 1   | OPEN -1HP - 208V/1 PH/ 60 1725/0000 -EC   |



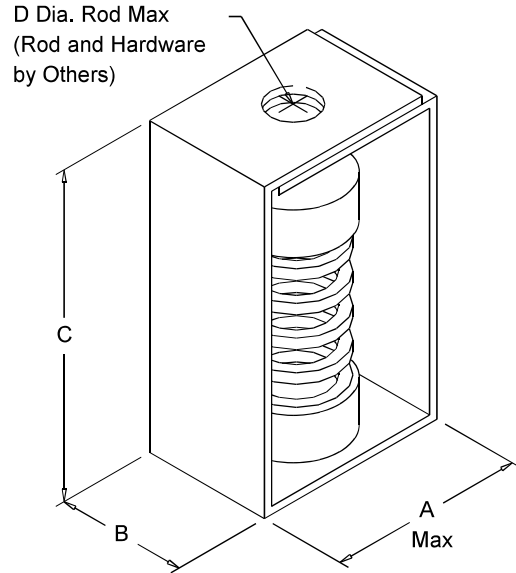
# COOK

PROJECT: NC009 HVAC PLUMB RESET

DATE: 10/23/2022

## SPRING CEILING

Housing Spring  
Spring Isolator  
Ceiling Mounted



### Dimensions (inches)

| Mark  | Qty | Description  | A      | B     | C       | D Dia. | Rated Deflection |
|-------|-----|--------------|--------|-------|---------|--------|------------------|
| EF-04 | 1   | SC-35 SET(4) | 2-5/32 | 1-1/2 | 3-15/32 | 1/2    | 1.03             |
| EF-05 | 1   | SC-70 SET(4) | 2-5/32 | 1-1/2 | 3-15/32 | 1/2    | 1.03             |

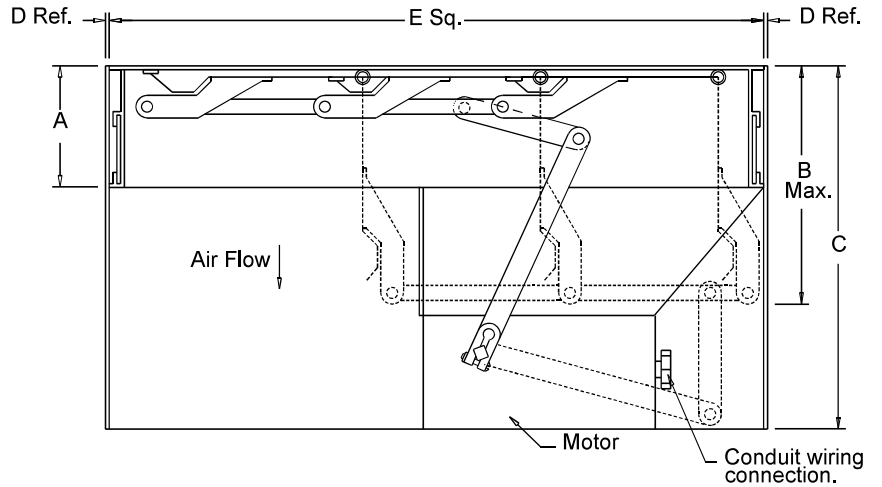


## BDMI

### Motorized Intake Backdraft Damper

#### STANDARD CONSTRUCTION FEATURES:

.020 aluminum blades - .060 aluminum frame - .080 aluminum wrapper - Aluminum hinge pins - Nylon bushings - Non-overloading motor.



#### Dimensions (inches)

| Mark   | Qty | Description          | A     | B Max. | C | D   | E Sq.  | # Motors |
|--------|-----|----------------------|-------|--------|---|-----|--------|----------|
| KSF-01 | 1   | BDMI-26 MTR DPR 115V | 1-7/8 | 5-3/16 | 8 | 1/8 | 25-3/4 | 1        |



**COOK**

PROJECT: NC009 HVAC PLUMB RESET

DATE: 10/23/2022

# RCG COMMON CURB

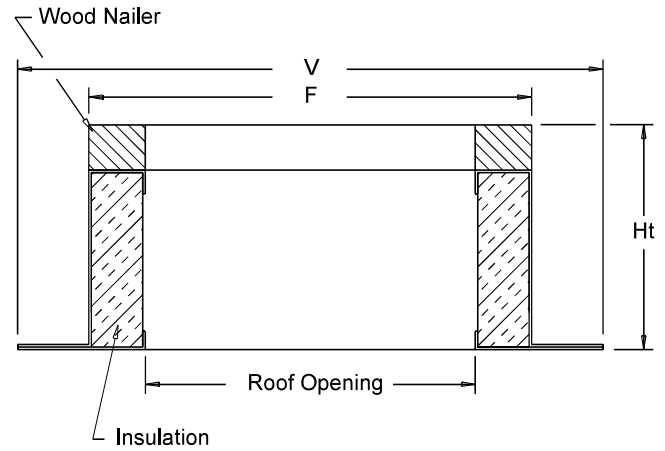
## Galvanized Steel Roof Curb

### STANDARD CONSTRUCTION FEATURES:

18 gauge galvanized steel - 1-1/2", 3 lbs. density  
thermal and accoustical insulation - Continuously  
welded corners - Wood nailer.

### Options:(As noted below\*)

- 1) No wood nailer (deduct 1-1/2" for actual height)
- 2) Liner.
- 3) Gasket on wood nailer.
- 4) Lorenized coating.
- 5) Enamel coating.



### Dimensions (inches)

| Mark   | Qty | Description | Ht   | Options* | F       | V       | Roof Opening |
|--------|-----|-------------|------|----------|---------|---------|--------------|
| KSF-01 | 1   | 120COMMON   | 13.5 | 1;       | 35 x 83 | 39 x 87 | 32 x 80      |



# COOK

PROJECT: NC009 HVAC PLUMB RESET

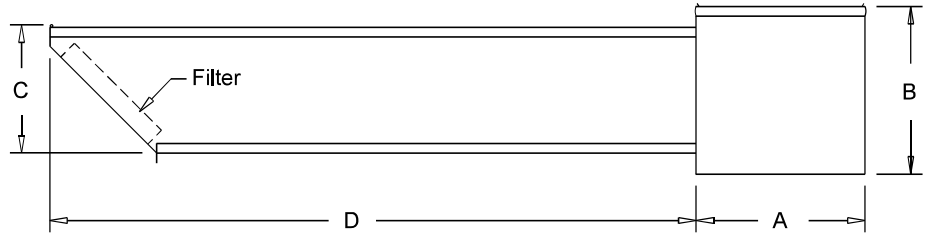
DATE: 10/23/2022

## Intake Extension

### KSP

#### STANDARD CONSTRUCTION FEATURES:

Heavy gauge galvanized housing - Removable one inch washable aluminum filters.



#### Dimensions (inches)

| Mark   | Qty | Description      | A Sq.   | B      | C              | D  |
|--------|-----|------------------|---------|--------|----------------|----|
| KSF-01 | 1   | INTAKE EXTENSION | 32-3/16 | 32-1/4 | 26-3/16x26-1/2 | 80 |



**COOK**

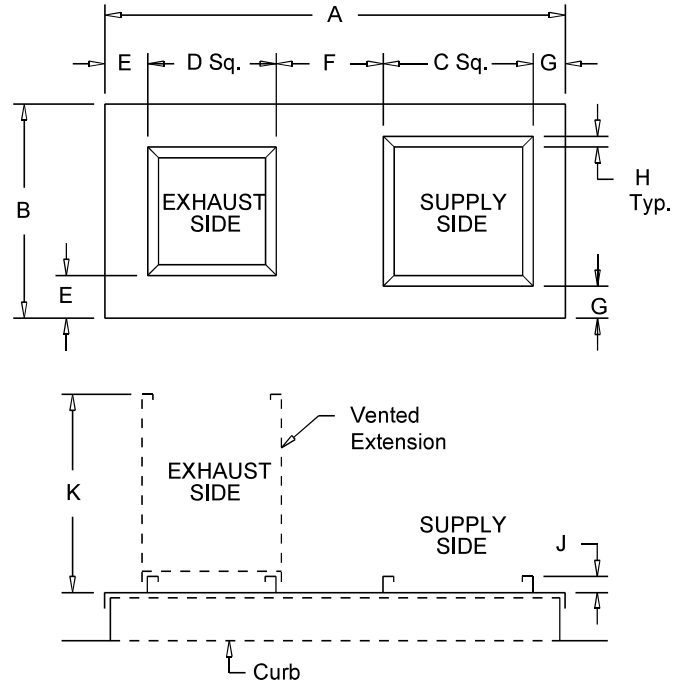
PROJECT: NC009 HVAC PLUMB RESET

DATE: 10/23/2022

# COMMON CURB CAP

## Supply/Exhaust Package Curb Cap

**STANDARD CONSTRUCTION FEATURES:**  
 14 gauge Lorenized steel - Continuously welded construction - Welded curb cap corners.



### Dimensions (inches)

| Mark   | Qty | Description       | A      | B      | C Sq.  | D Sq.  | E | F  | G     | H Typ. | J | K  |
|--------|-----|-------------------|--------|--------|--------|--------|---|----|-------|--------|---|----|
| KSF-01 | 1   | 12-18/24 CURB CAP | 84-1/2 | 36-1/2 | 31-3/8 | 28-5/8 | 4 | 18 | 2-5/8 | 2      | 4 | 20 |