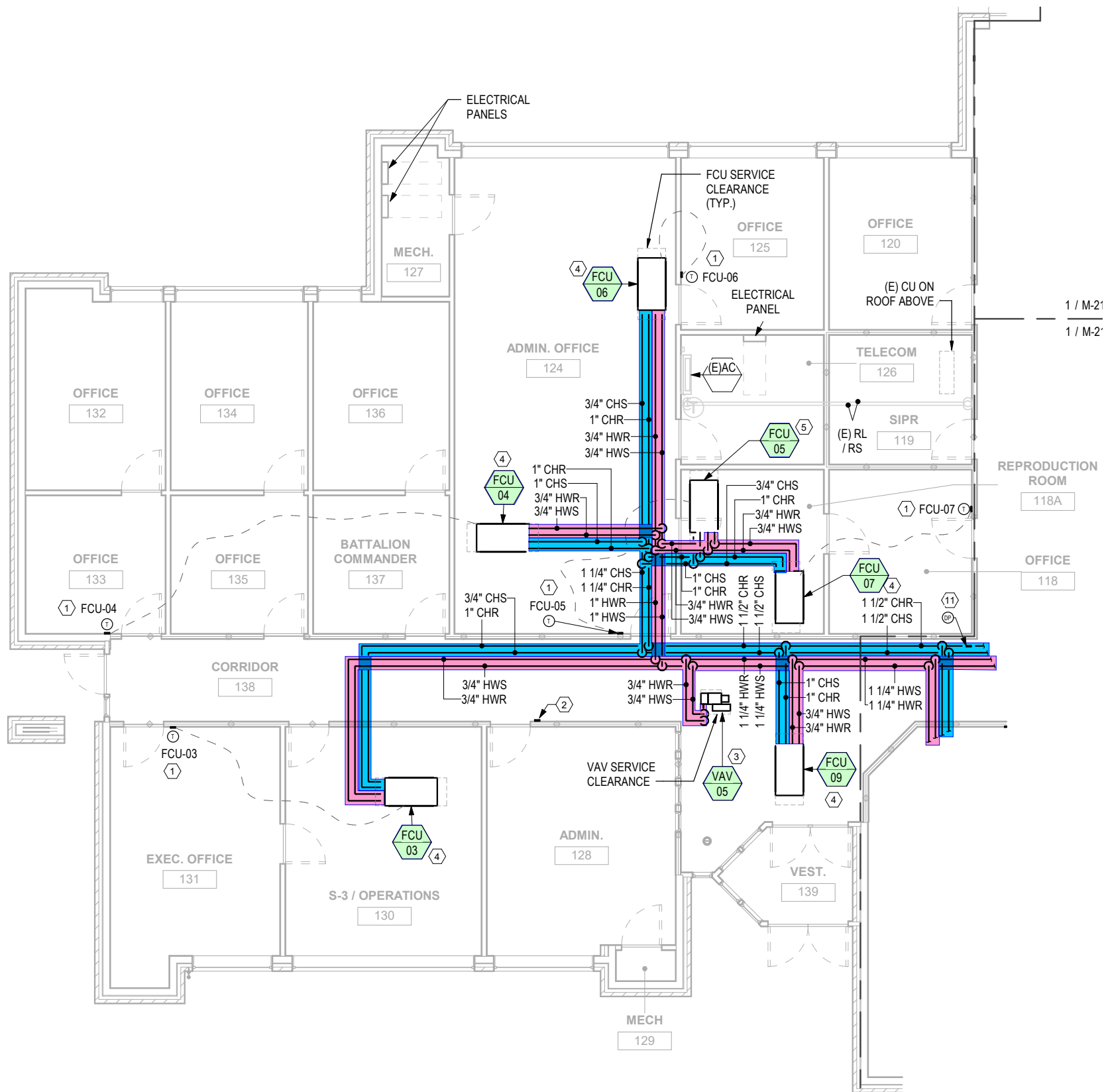
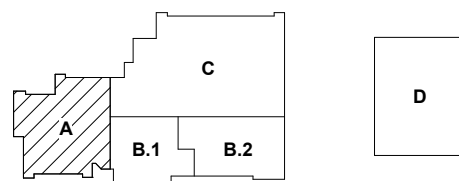


SHEET KEY NOTES

1. PROVIDE PROGRAMMABLE THERMOSTAT AND ALL ASSOCIATED CONTROL WIRING TO HVAC UNIT SERVING AREA. PATCH AND PAINT WALL RESULTING FROM NEW WORK TO MATCH EXISTING.
2. PROVIDE THREE HVAC EMERGENCY SHUT DOWN BUTTONS AS SHOWN ON PLANS. LOCATE ONE OF THE HVAC EMERGENCY SHUT DOWN BUTTONS NEAR THE FIRE ALARM LOCAL OPERATOR CONSOLE LOCATED IN ADMIN 128.
3. PROVIDE HYDRONIC HEATING VARIABLE VOLUME TERMINAL BOX. REFER TO DETAIL A4 / M-504 FOR COIL PIPING COMPONENTS AND ACCESSORIES. REFER TO SCHEDULE ON M-602 FOR MORE INFORMATION.
4. PROVIDE HYDRONIC HEATING & COOLING FAN COIL UNIT. PROVIDE UNIT WITH DRAIN PAN AND CONDENSATE P-TRAP. REFER TO SCHEDULE ON M-601 AND DETAIL D4 / M-504 FOR ADDITIONAL INFORMATION. REFER TO DETAIL C7 / M-503 FOR ADDITIONAL P-TRAP INFORMATION. REFER TO PLUMBING DRAWINGS FOR CONDENSATE ROUTING.
5. PROVIDE HYDRONIC HEATING & COOLING FAN COIL UNIT WITH 3/4" HWS / HWR AND 1" CHS / CHR PIPING. PROVIDE UNIT WITH DRAIN PAN AND CONDENSATE P-TRAP. REFER TO SCHEDULE ON M-601 AND DETAIL D4 / M-504 FOR ADDITIONAL INFORMATION. REFER TO DETAIL C7 / M-503 FOR ADDITIONAL P-TRAP INFORMATION. REFER TO PLUMBING DRAWINGS FOR CONDENSATE ROUTING.



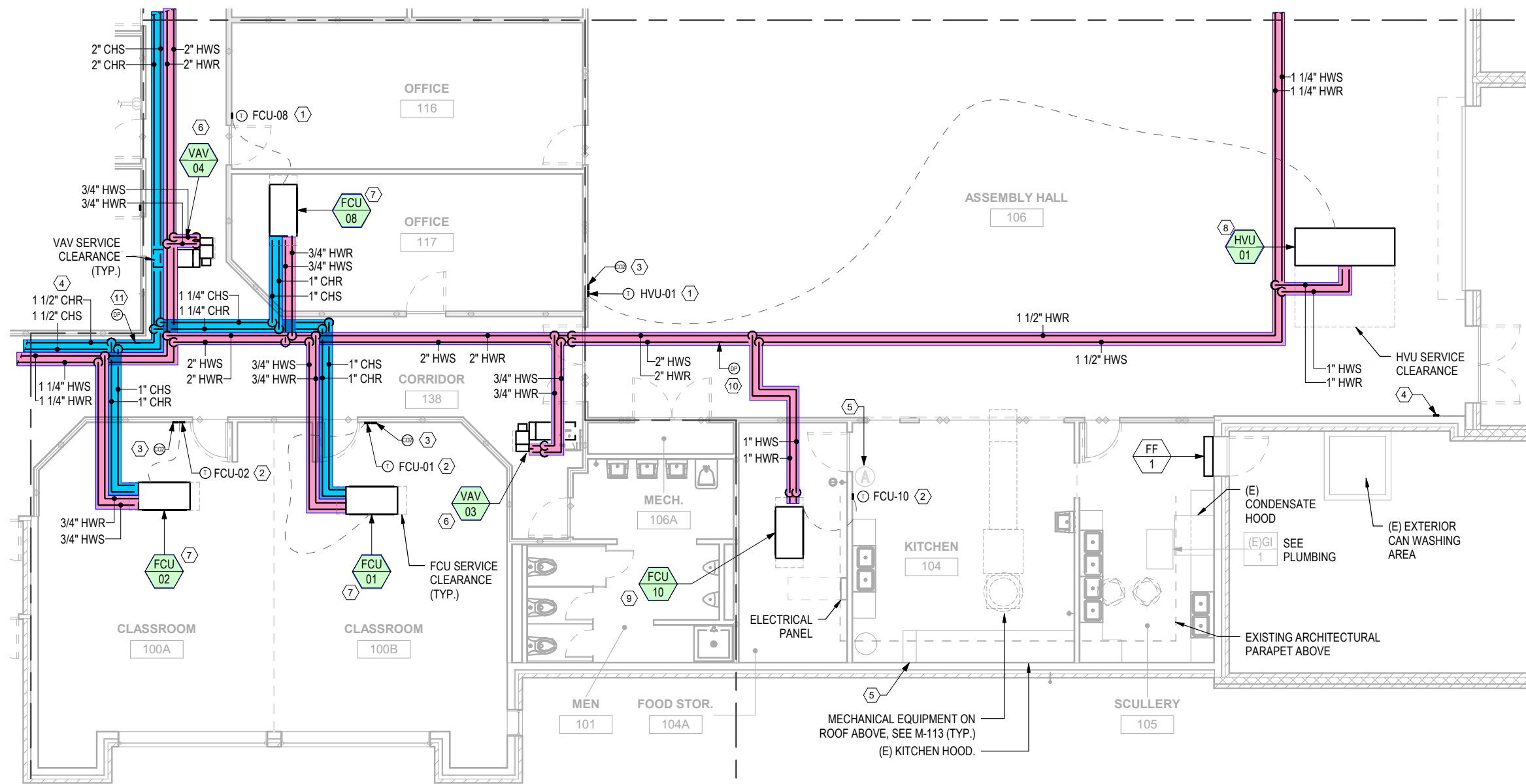
1 MECHANICAL FIRST FLOOR PIPE PLAN - AREA A
 3/16" = 1'-0"



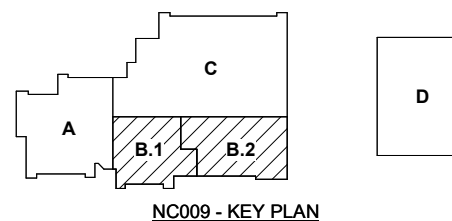
NC009 - KEY PLAN

SHEET KEY NOTES

1. PROVIDE PROGRAMMABLE THERMOSTAT AND ALL ASSOCIATED CONTROL WIRING TO HVAC UNIT SERVING AREA. PATCH AND PAINT WALL RESULTING FROM NEW WORK TO MATCH EXISTING.
2. PROVIDE TEMPERATURE SENSOR AND ALL ASSOCIATED CONTROL WIRING TO HVAC UNIT SERVING AREA. PATCH AND PAINT WALL RESULTING FROM NEW WORK TO MATCH EXISTING.
3. PROVIDE CARBON DIOXIDE SENSOR FOR DEMAND CONTROL VENTILATION AND ALL ASSOCIATED CONTROL WIRING TO HVAC UNIT SERVING AREA. PATCH AND PAINT WALL RESULTING FROM NEW WORK TO MATCH EXISTING.
4. PROVIDE THREE HVAC EMERGENCY SHUT DOWN BUTTONS AS SHOWN ON PLANS. LOCATE ONE OF THE HVAC EMERGENCY SHUT DOWN BUTTONS NEAR THE FIRE ALARM LOCAL OPERATOR CONSOLE LOCATED IN ADMIN 128.
5. EXISTING ANSUL FIRE SUPPRESSION SYSTEM PANEL WITH EXHAUST FAN ON / OFF SWITCH TO REMAIN. THE EXISTING KITCHEN HOOD FIRE SUPPRESSION SYSTEM SHALL REMAIN AND COMPONENTS BE UPDATED AS NECESSARY FOR A FULLY FUNCTIONAL SYSTEM INCLUDING A NFPA FIRE SUPPRESSION SYSTEM INSPECTION.
6. PROVIDE HYDRONIC HEATING VARIABLE VOLUME TERMINAL BOX. REFER TO DETAIL A4 / M-504 FOR COIL PIPING COMPONENTS AND ACCESSORIES. REFER TO SCHEDULE ON M-602 FOR MORE INFORMATION.
7. PROVIDE HYDRONIC HEATING & COOLING FAN COIL UNIT. PROVIDE UNIT WITH DRAIN PAN AND CONDENSATE P-TRAP. REFER TO SCHEDULE ON M-601 AND DETAIL D4 / M-504 FOR ADDITIONAL INFORMATION. REFER TO DETAIL C7 / M-503 FOR ADDITIONAL P-TRAP INFORMATION. REFER TO PLUMBING DRAWINGS FOR CONDENSATE ROUTING.
8. PROVIDE HYDRONIC HEATING VENTILATING UNIT. REFER TO DETAIL D4 / M-504 FOR COIL PIPING COMPONENTS AND ACCESSORIES. REFER TO M-602 AND M-711 FOR MORE INFORMATION.
9. PROVIDE HYDRONIC HEATING ONLY FAN COIL UNIT. REFER TO SCHEDULE ON M-601 AND DETAIL D4 / M-504 FOR ADDITIONAL INFORMATION.
10. APPROXIMATE LOCATION FOR HOT WATER SYSTEM PUMP DIFFERENTIAL PRESSURE SENSOR. REFER TO HYDRONIC DIAGRAM A1 / M-803 FOR MORE INFORMATION.
11. APPROXIMATE LOCATION FOR CHILLED WATER SYSTEM PUMP DIFFERENTIAL PRESSURE SENSOR. REFER TO HYDRONIC DIAGRAM D1 / M-803 FOR MORE INFORMATION.

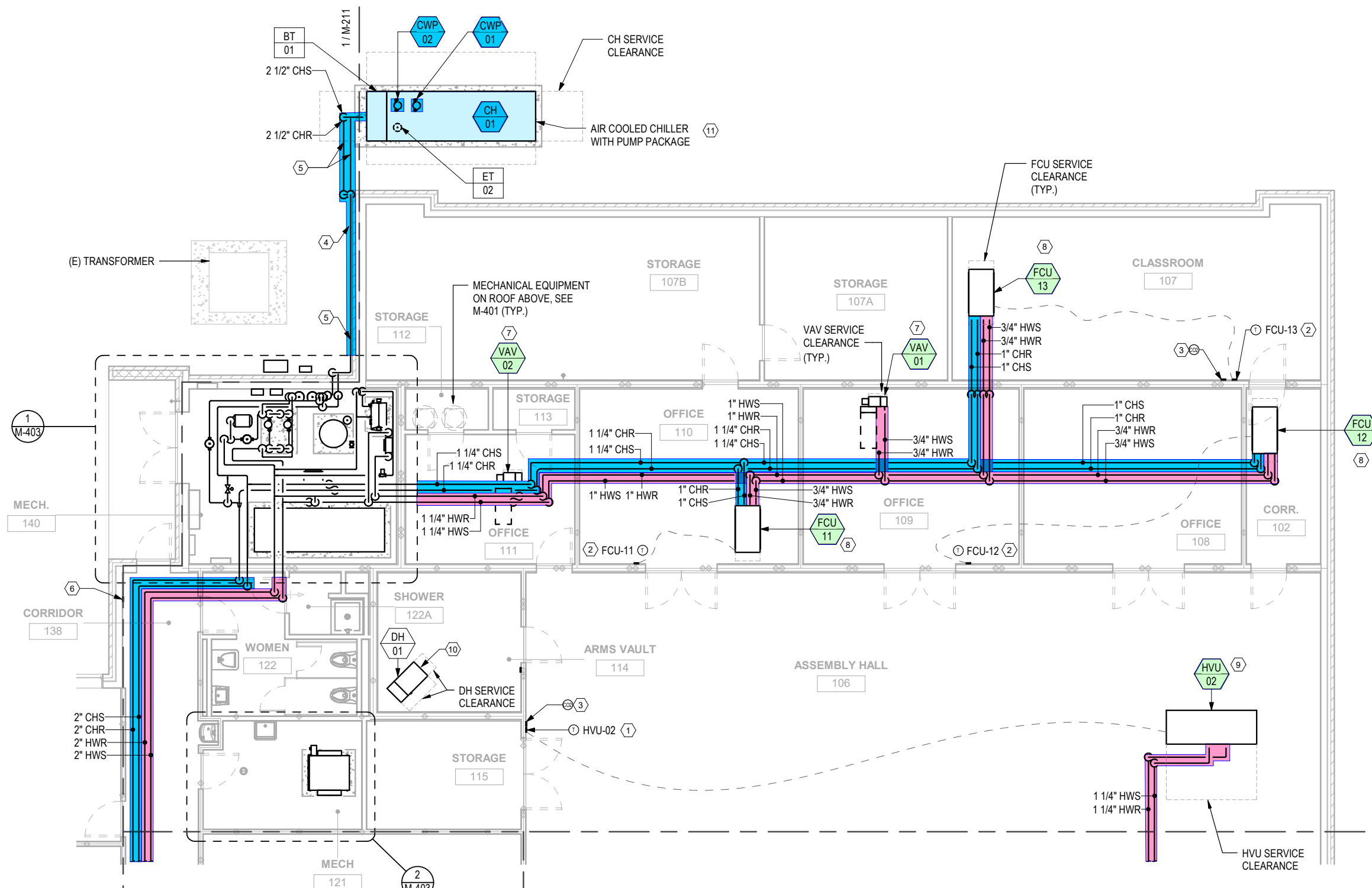


1 MECHANICAL FIRST FLOOR PIPE PLAN - AREA B.1 & B.2
3/16" = 1'-0"

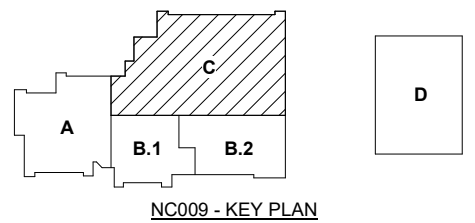


SHEET KEY NOTES

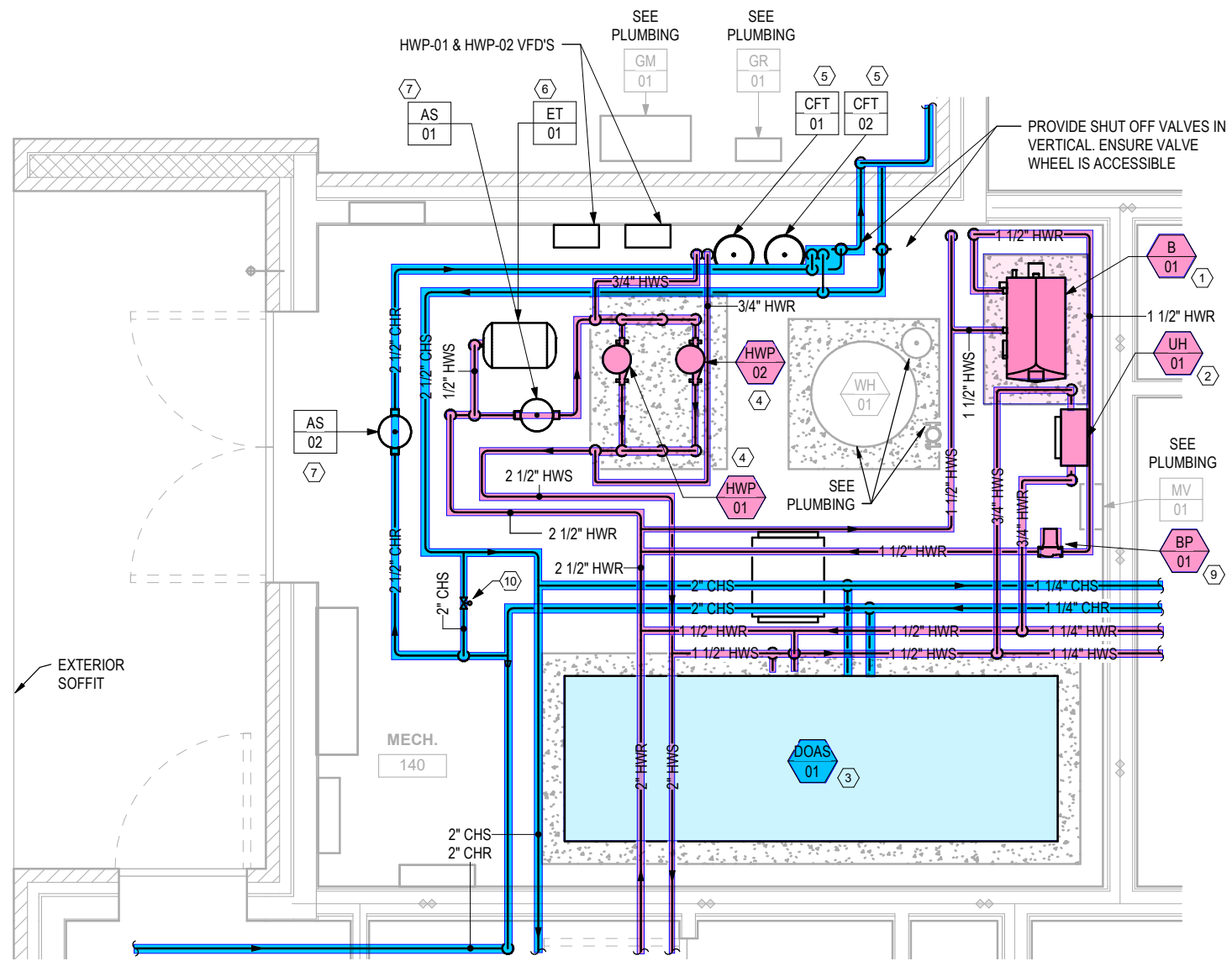
1. PROVIDE PROGRAMMABLE THERMOSTAT AND ALL ASSOCIATED CONTROL WIRING TO HVAC UNIT SERVING AREA. PATCH AND PAINT WALL RESULTING FROM NEW WORK TO MATCH EXISTING.
2. PROVIDE TEMPERATURE SENSOR AND ALL ASSOCIATED CONTROL WIRING TO HVAC UNIT SERVING AREA. PATCH AND PAINT WALL RESULTING FROM NEW WORK TO MATCH EXISTING.
3. PROVIDE CARBON DIOXIDE SENSOR FOR DEMAND CONTROL VENTILATION AND ALL ASSOCIATED CONTROL WIRING TO HVAC UNIT SERVING AREA. PATCH AND PAINT WALL RESULTING FROM NEW WORK TO MATCH EXISTING.
4. 2 1/2" CHS & CHR PIPING FROM CHILLER. ROUTE PIPING ALONG EXTERIOR WALL TO MECHANICAL ROOM 140.
5. EXTERIOR PIPE INSULATION SHALL HAVE JACKETING THAT IS HIGH UV, IMPACT, AND TEAR RESISTANT. JACKET APPLICATION SHALL BE SEALED WEATHER TIGHT. PIPE ENCLOSURE SHALL BE SEALED TO BE RODENT RESISTANT. REFER TO PIPE INSULATION SCHEDULE ON M-002 FOR MORE INFORMATION.
6. PROVIDE THREE HVAC EMERGENCY SHUT DOWN BUTTONS AS SHOWN ON PLANS. LOCATE ONE OF THE HVAC EMERGENCY SHUT DOWN BUTTONS NEAR THE FIRE ALARM LOCAL OPERATOR CONSOLE LOCATED IN ADMIN 128.
7. PROVIDE HYDRONIC HEATING VARIABLE VOLUME TERMINAL BOX. REFER TO DETAIL A4 / M-504 FOR COIL PIPING COMPONENTS AND ACCESSORIES. REFER TO SCHEDULE ON M-602 FOR MORE INFORMATION.
8. PROVIDE HYDRONIC HEATING & COOLING FAN COIL UNIT. PROVIDE UNIT WITH DRAIN PAN AND CONDENSATE P-TRAP. REFER TO SCHEDULE ON M-601 AND DETAIL D4 / M-504 FOR ADDITIONAL INFORMATION. REFER TO DETAIL C7 / M-503 FOR ADDITIONAL P-TRAP INFORMATION. REFER TO PLUMBING DRAWINGS FOR CONDENSATE ROUTING.
9. PROVIDE HYDRONIC HEATING VENTILATING UNIT. REFER TO DETAIL D4 / M-504 FOR COIL PIPING COMPONENTS AND ACCESSORIES. REFER TO M-602 AND M-711 FOR MORE INFORMATION.
10. SUPPORT DEHUMIDIFIER FROM CONCRETE CEILING, REFER TO DETAIL A7 / M-505 FOR MORE INFORMATION. REFER TO M-604 FOR SCHEDULE INFORMATION. ROUTE CONDENSATE TO SERVICE SINK IN ROOM MECH - 121. REFER TO CONDENSATE PIPING ON 1 / P-402 FOR ROUTING.
11. PROVIDE NEW AIR COOLED CHILLER WITH PUMP PACKAGE INCLUDING DUAL PUMPS, BUFFER TANK, AND EXPANSION TANK. REFER TO DETAIL A1 / M-505 AND E1 / M-803 FOR MORE CHILLER DETAIL AND HYDRONIC ACCESSORIES INFORMATION. REFER TO M-600 FOR MORE SCHEDULE INFORMATION.



1 MECHANICAL FIRST FLOOR PIPE PLAN - AREA C
 3/16" = 1'-0"



NC009 - KEY PLAN



1

ENLARGED MECHANICAL PIPE PLAN - MECHANICAL ROOM 140

1/2" = 1'-0"

