

Report By:

National TAB
1329 E. KEMPER ROAD
SUITE 4210
CINCINNATI, OH 45246



Report: Punchlist
Function: Test, Adjust, & Balance
Date: 03/11/2026
Completed By: National TAB

PROJECT

03-09-26 Wawa #8681 Ruckersville, VA

8878 Seminole Trail

Ruckersville, VA 22968

Client

Wawa
260 West Baltimore Pike

Wawa, PA 19063

National TAB

Project: 03-09-26 Wawa #8681 Ruckersville, VA

Table Of Contents

Section	Page #
Remarks	3

Issue List

- Low CFM Reading Supply Grilles
- RTU Sensors

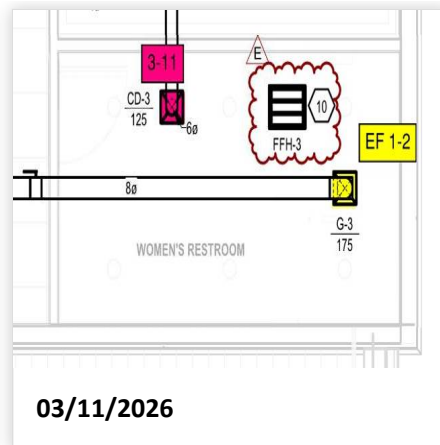
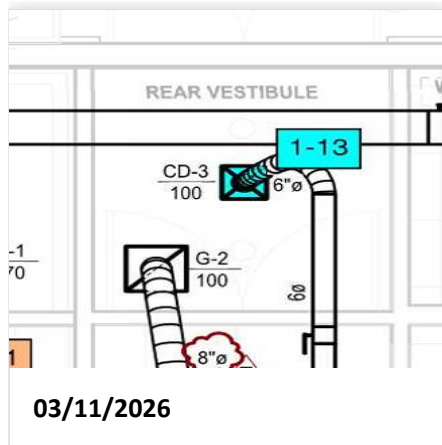


03-09-26 Wawa #8681 Ruckersville, VA

Project Issue Information

Issue Name : Low CFM Reading Supply Grilles
Description : Supply grilles 1-13 and 3-11 are having difficulty moving air to locations. Dampers for both grilles are confirmed to be full open.
Created By : National TAB **Assigned To :** National TAB - Brianna Biggs
Status : Open
Priority : Medium **Asset Tag :**
Originated Date : 03/11/2026 - John Barresi - National TAB

Project Issue File Details





03-09-26 Wawa #8681 Ruckersville, VA

Project Issue Information

Issue Name : RTU Sensors
Description : Site received bad sensors. Units running as "Stand-Alone" at the moment. Site Super has confirmed this will be rectified 3/12.
Created By : National TAB **Assigned To :** National TAB - Brianna Biggs
Status : Pending
Priority : Medium **Asset Tag :**
Originated Date : 03/11/2026 - John Barresi - National TAB