

Report By:

National TAB
1329 E. KEMPER ROAD
SUITE 4210
CINCINNATI, OH 45246



Report: Punchlist
Function: Test, Adjust, & Balance
Date: 03/11/2026
Completed By: National TAB

PROJECT

03-09-26 Wawa #8681 Ruckersville, VA

8878 Seminole Trail

Ruckersville, VA 22968

Client

Wawa
260 West Baltimore Pike

Wawa, PA 19063

National TAB

Project: 03-09-26 Wawa #8681 Ruckersville, VA

Table Of Contents

Section	Page #
Remarks	3

Issue List

- Difficulties Moving Air RTU-3 Supply's
- Difficulties Moving Air RTU-3 Supply's Pt. 2
- Exhaust Fans Not Running
- Low CFM Reading Supply Grilles
- RTU Sensors
- RTU-1 Alarms
- RTU-1 Sensor/Wiring Error
- RTU-2 Alarms



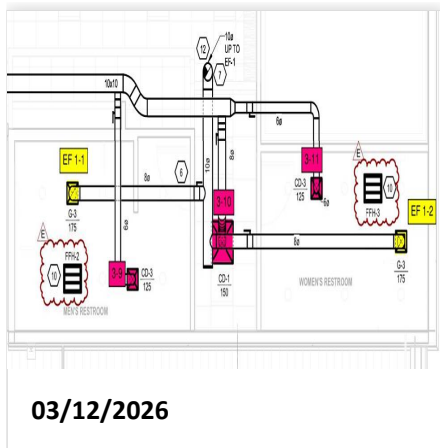
03-09-26 Wawa #8681 Ruckersville, VA

Project Issue Information

Issue Name : Difficulties Moving Air RTU-3 Supply's
Description : There is difficulty in moving air to the Restroom Area (Women's). Though damper for Women's is wide open, Supply Grille 3-11 is still getting low flow. Main suspect is reduction area from 10" to 6" is inadvertently pushing air to Hallway (3-10) instead, as well as distance from supply drop. RTU-3 is currently balanced out to total airflow.

Created By : National TAB **Assigned To :** National TAB - Brianna Biggs
Status : Open
Priority : Medium **Asset Tag :** SGRD3
Originated Date : 03/12/2026 - John Barresi - National TAB

Project Issue File Details





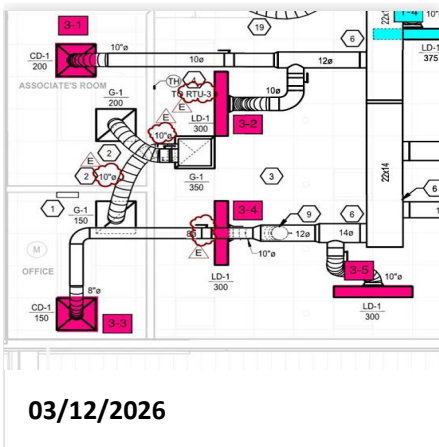
03-09-26 Wawa #8681 Ruckersville, VA

Project Issue Information

Issue Name : Difficulties Moving Air RTU-3 Supply's Pt. 2
Description : Supply Grille 3-3 currently has airflow above design. Looking above ceiling did not reveal a damper to close 3-3. However, the branch connecting 3-3, 3-4, and 3-5 has a damper controlling the entire branch. RTU-3 is currently balanced out to total flow.

Created By : National TAB **Assigned To :** National TAB - Brianna Biggs
Status : Closed
Priority : Medium **Asset Tag :** SGRD3
Originated Date : 03/12/2026 - John Barresi - National TAB

Project Issue File Details



Project Issue Response Details

- **03/13/2026 National TAB - John Barresi**
 - Supply Grille 3-3 now has a damper installed.



03-09-26 Wawa #8681 Ruckersville, VA

Project Issue Information

Issue Name : Exhaust Fans Not Running
Description : Both EF-1 and EF-2 are not finished being wired up and are inoperable.
Created By : National TAB **Assigned To :** National TAB - Brianna Biggs
Status : Open
Priority : High **Asset Tag :**
Originated Date : 03/13/2026 - John Barresi - National TAB

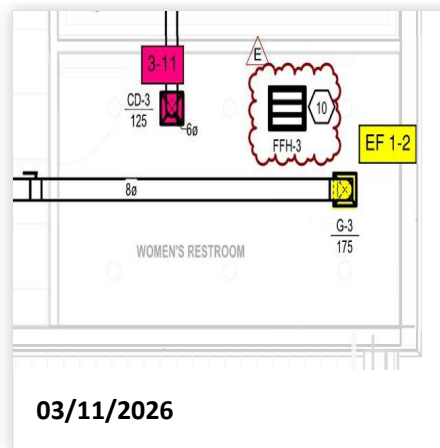
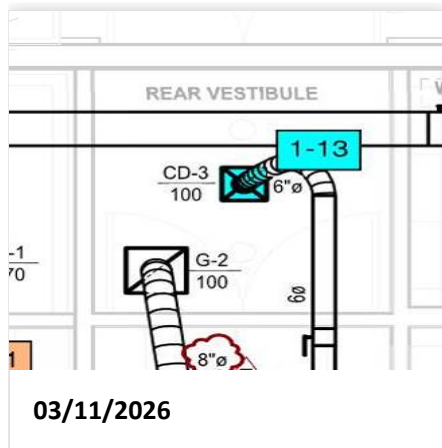


03-09-26 Wawa #8681 Ruckersville, VA

Project Issue Information

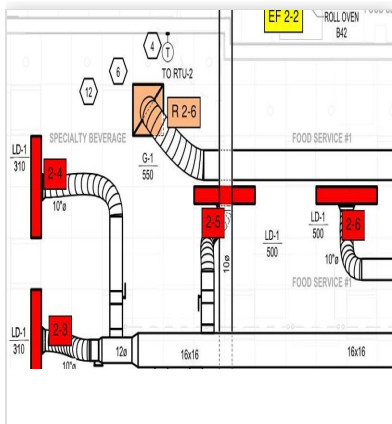
Issue Name : Low CFM Reading Supply Grilles
Description : Supply grilles 1-13 and 3-11 are having difficulty moving air to locations. Dampers for both grilles are confirmed to be full open.
Created By : National TAB **Assigned To :** National TAB - Brianna Biggs
Status : Open
Priority : Medium **Asset Tag :**
Originated Date : 03/11/2026 - John Barresi - National TAB

Project Issue File Details



Project Issue Response Details

- **03/12/2026 National TAB - John Barresi**
 - Difficulty moving air to Supply 2-5 as well, dampering down / manipulating surrounding grilles does not push air to 2-5.



03/12/2026



03-09-26 Wawa #8681 Ruckersville, VA

Project Issue Information

Issue Name : RTU Sensors
Description : Site received bad sensors. Units running as "Stand-Alone" at the moment. Site Super has confirmed this will be rectified 3/12.
Created By : National TAB **Assigned To :** National TAB - Brianna Biggs
Status : Closed
Priority : Medium **Asset Tag :**
Originated Date : 03/11/2026 - John Barresi - National TAB

Project Issue Response Details

- **03/13/2026 National TAB - John Barresi**
 - Sensors for units have been installed as of 3/13.

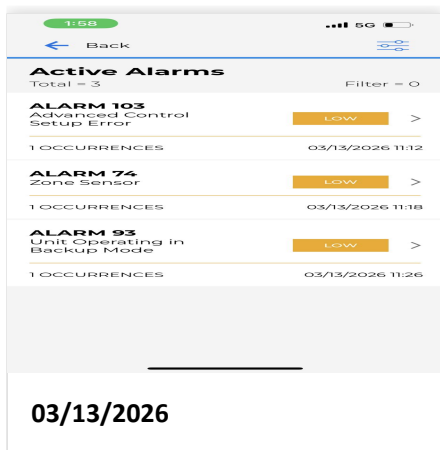


03-09-26 Wawa #8681 Ruckersville, VA

Project Issue Information

Issue Name : RTU-1 Alarms
Description : Unit is giving Alarms 103 "Advanced Control Setup Error", 74 "Zone Sensor", 93 "Unit Operating in Backup Mode". Alarms 74 and 93 are present due to needing to unplug the sensor at the unit due to the unit believing that the area was over 90F.
Created By : National TAB **Assigned To :** National TAB - Brianna Biggs
Status : Open
Priority : Low **Asset Tag :** RTU1
Originated Date : 03/13/2026 - John Barresi - National TAB

Project Issue File Details



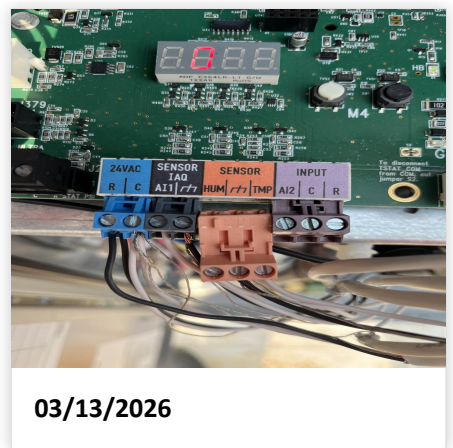
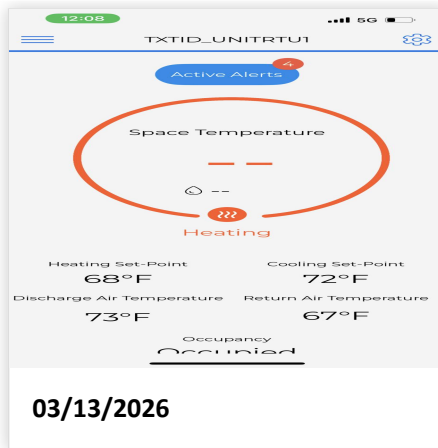


03-09-26 Wawa #8681 Ruckersville, VA

Project Issue Information

Issue Name : RTU-1 Sensor/Wiring Error
Description : Unit believes that the space is 96F when sensor is connected. Sensor has been unplugged at unit. Unit is currently operating in Return Air Back-Up mode. Sensor faulty/incorrect wiring.
Created By : National TAB **Assigned To :** National TAB - Brianna Biggs
Status : Open
Priority : Medium **Asset Tag :** RTU1
Originated Date : 03/13/2026 - John Barresi - National TAB

Project Issue File Details





03-09-26 Wawa #8681 Ruckersville, VA

Project Issue Information

Issue Name : RTU-2 Alarms
Description : Unit is giving Alarm 76 "Humidity Sensor".
Created By : National TAB **Assigned To :** National TAB - Brianna Biggs
Status : Open
Priority : Low **Asset Tag :** RTU2
Originated Date : 03/13/2026 - John Barresi - National TAB

Project Issue File Details

