



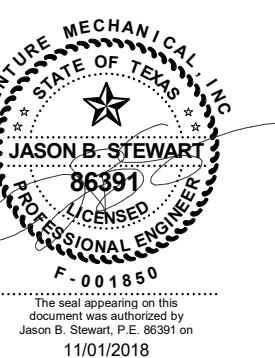
NOTES BY SYMBOL  
1. UPON COMPLETION OF T1 WORK IN THIS LOCATION, REMOVE RA END CAP FOR ECU-1.2 AND REBALANCE O/A TO 80 CFM.

ISSUE LOG

DATE	DESCRIPTION	DELTA
09/21/18	50% PROGRESS SET	
10/19/18	75% PROGRESS SET	
11/01/18	PERMIT SET	

ISSUE LOG

DATE	DESCRIPTION	DELTA
11/01/18	PERMIT SET	



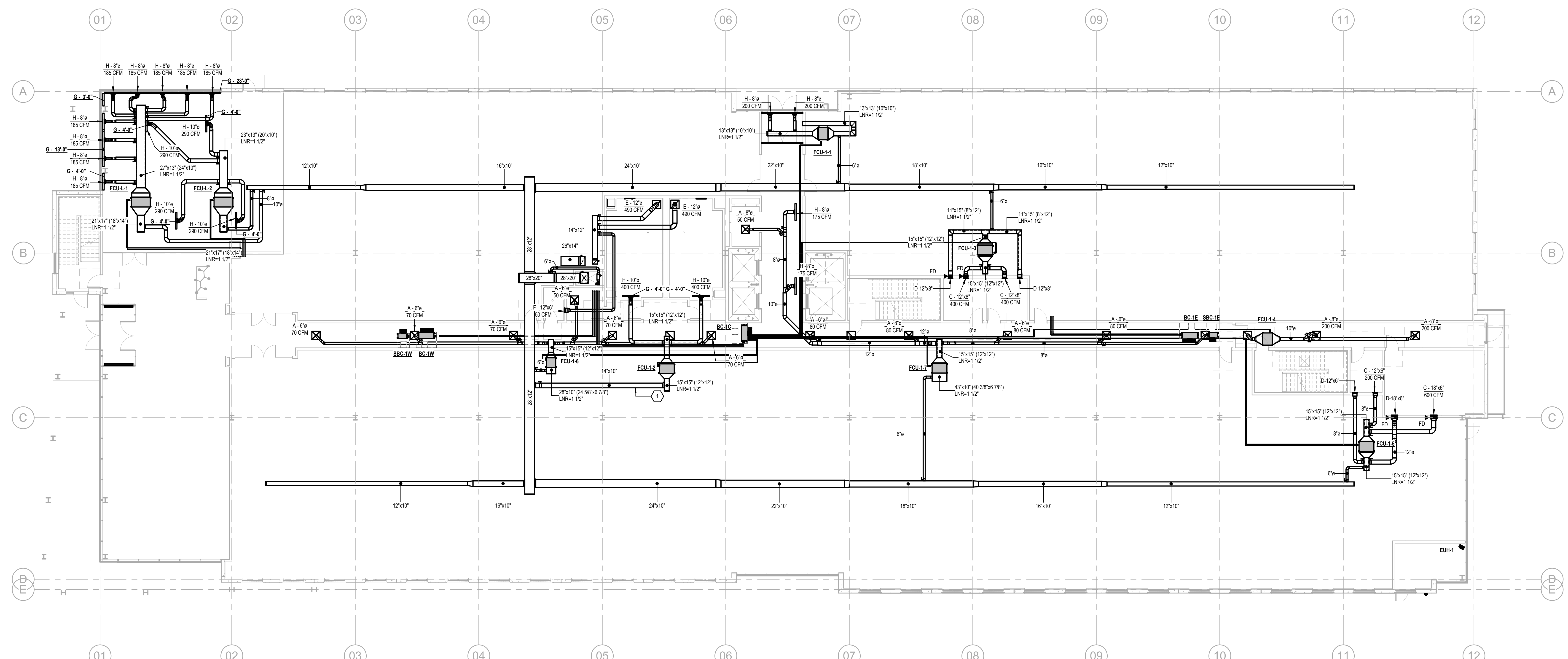
DATE SEAL	ARCH. PROJ. #	SCALE:
07/26/18	17129.01	REF. DRAWING

SHEET NO.

M01.001

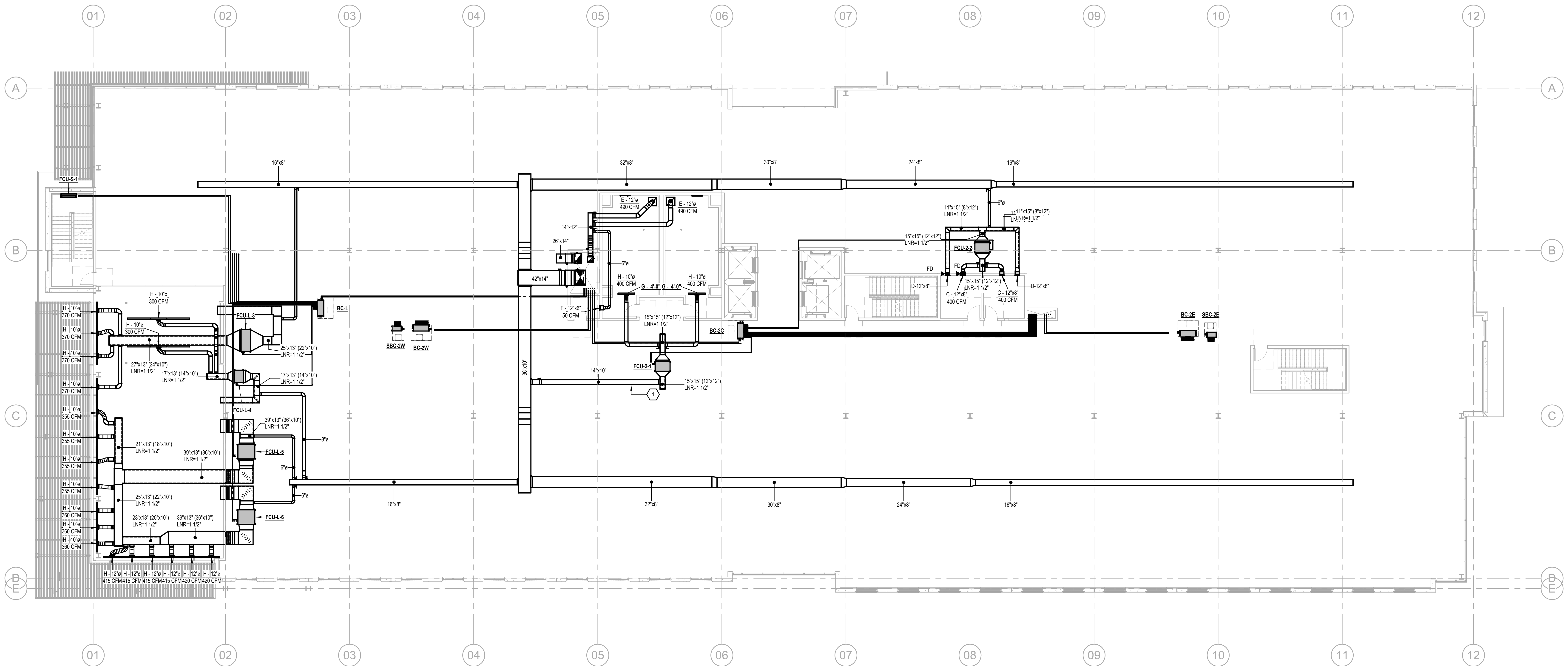
LEVEL 1 FLOOR PLAN - MECHANICAL

COPYRIGHT © 2018 O'BRIEN ARCHITECTS. ALL RIGHTS RESERVED. NO PARTS OF THIS DRAWING MAY BE REPRODUCED OR TRANSMITTED IN ANY FORM OR BY ANY MEANS, WITHOUT THE PRIOR WRITTEN CONSENT FROM O'BRIEN ARCHITECTS.



1 LEVEL 1 FLOOR PLAN - HVAC  
SCALE: 3/32" = 1'-0"

NOTES BY SYMBOL  
1. UPON COMPLETION OF T1 WORK IN THIS LOCATION REMOVE RA END CAP FOR ECU-2.1 AND REBALANCE O/A TO 80 CFM.



1 LEVEL 2 FLOOR PLAN - HVAC  
SCALE: 3/32" = 1'-0"

ISSUE LOG

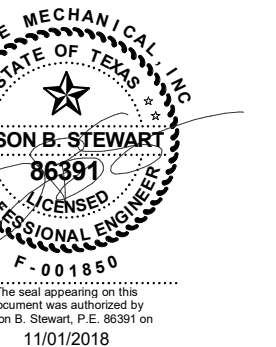
DATE	DESCRIPTION
09/21/18	50% PROGRESS SET
10/19/18	75% PROGRESS SET
11/01/18	PERMIT SET

ISSUE LOG

DATE	DESCRIPTION	DELTA
11/01/18	PERMIT SET	

O'BRIEN  
ARCHITECTS

5310 HARVEST HILL RD.  
SUITE 136  
DALLAS, TX 75230  
972.788.1010  
www.obrienarch.com



DATE SEAL	ARCH. PROJ. #	SCALE:
07/26/18	17129.01	REF. DRAWING

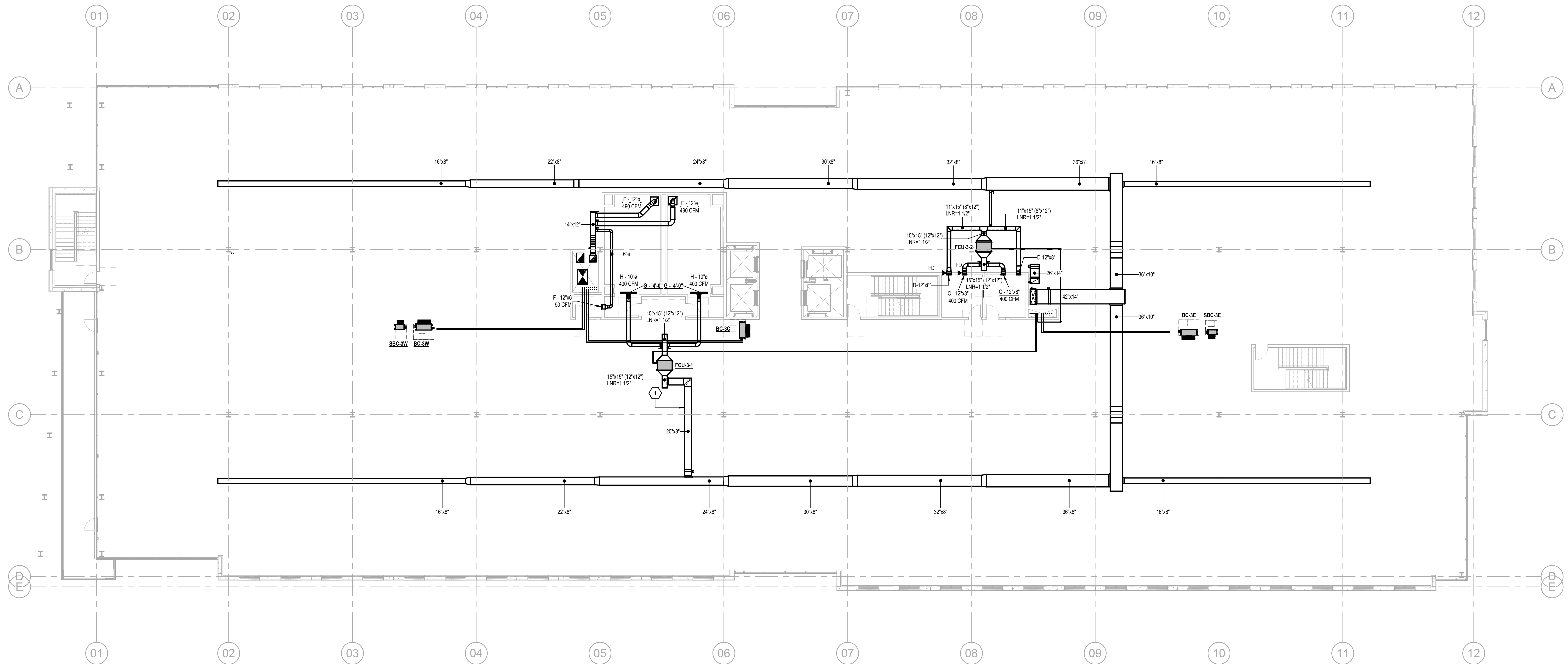
SHEET NO.

M01.002

LEVEL 2 FLOOR PLAN -  
MECHANICAL

COPYRIGHT © 2018 O'BRIEN ARCHITECTS. ALL RIGHTS RESERVED. THESE DRAWINGS, OR PARTS THEREOF, MAY NOT BE REPRODUCED IN ANY FORM OR BY ANY METHOD, FOR ANY PURPOSE, WITHOUT THE PRIOR WRITTEN CONSENT FROM O'BRIEN ARCHITECTS.

NOTES BY SYMBOL  
1. UPON COMPLETION OF T1 WORK IN THIS LOCATION REMOVE RA END CAP FOR ECU-3.1 AND REBALANCE O/A TO 80 CFM.



1 LEVEL 3 FLOOR PLAN - HVAC  
SCALE: 3/32" = 1'-0"

ISSUE LOG

DATE	DESCRIPTION
09/21/18	50% PROGRESS SET
10/19/18	75% PROGRESS SET
11/01/18	PERMIT SET

ISSUE LOG

DATE	DESCRIPTION	DELTA
11/01/18	PERMIT SET	

O'BRIEN  
ARCHITECTS

5310 HARVEST HILL RD.  
SUITE 136  
DALLAS, TX 75230  
972.788.1010  
www.obrienarch.com



DATE SEAL	ARCH. PROJ. #	SCALE:
07/26/18	17129.01	REF. DRAWING

SHEET NO.

M01.003

LEVEL 3 FLOOR PLAN -  
MECHANICAL

COPYRIGHT © 2018 O'BRIEN ARCHITECTS. ALL RIGHTS RESERVED. NO PARTS OF THIS DRAWING MAY BE REPRODUCED OR TRANSMITTED IN ANY FORM OR BY ANY MEANS, ELECTRONIC OR MECHANICAL, WITHOUT THE PRIOR WRITTEN CONSENT FROM O'BRIEN ARCHITECTS.

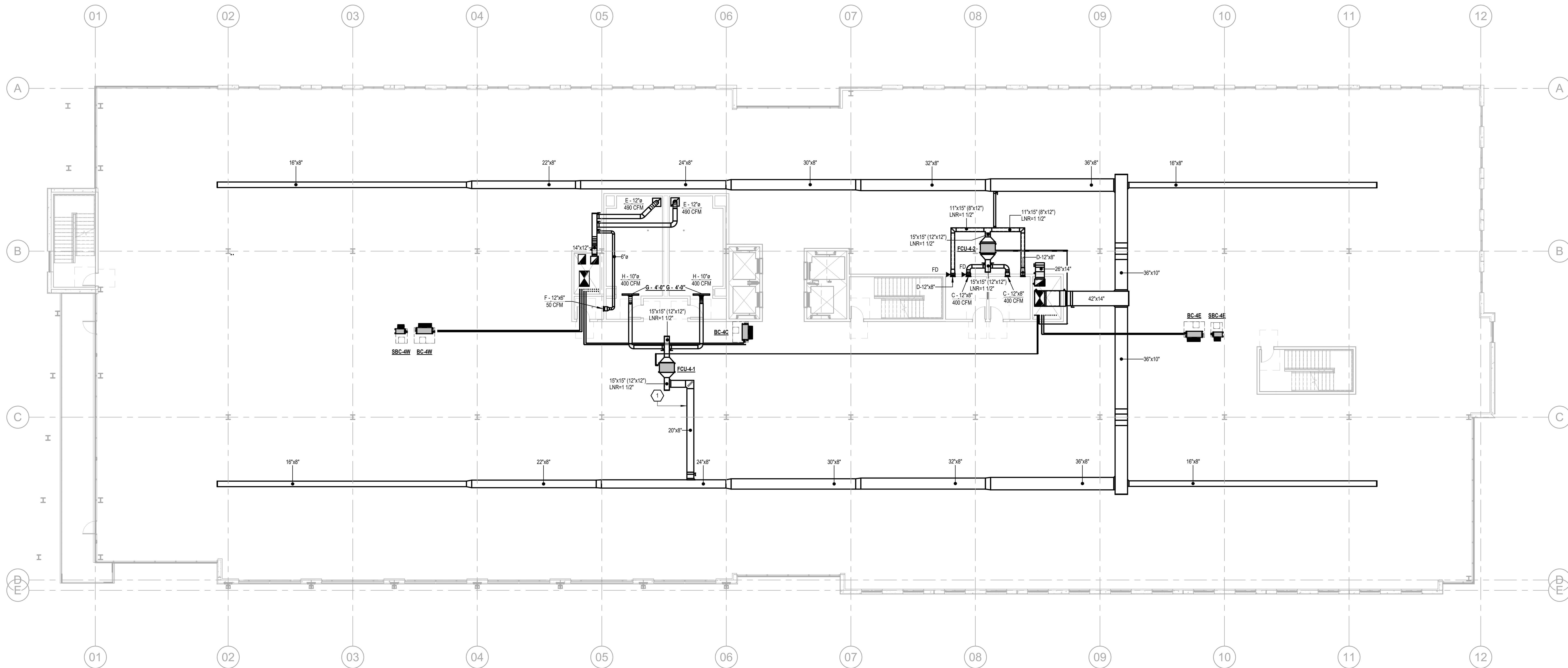
NOTES BY SYMBOL  
1. UPON COMPLETION OF T1 WORK IN THIS LOCATION REMOVE RA END CAP FOR FCU-1 AND REBALANCE O/A TO 80 CFM.

ISSUE LOG

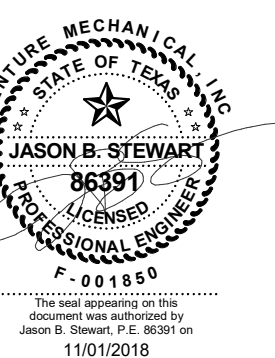
DATE	DESCRIPTION
09/21/18	50% PROGRESS SET
10/19/18	75% PROGRESS SET
11/01/18	PERMIT SET

ISSUE LOG

DATE	DESCRIPTION	DELTA
11/01/18	PERMIT SET	



1 LEVEL 4 FLOOR PLAN - HVAC  
SCALE: 3/32" = 1'-0"



DATE SEAL	ARCH. PROJ. #	SCALE:
07/26/18	17129.01	REF. DRAWING

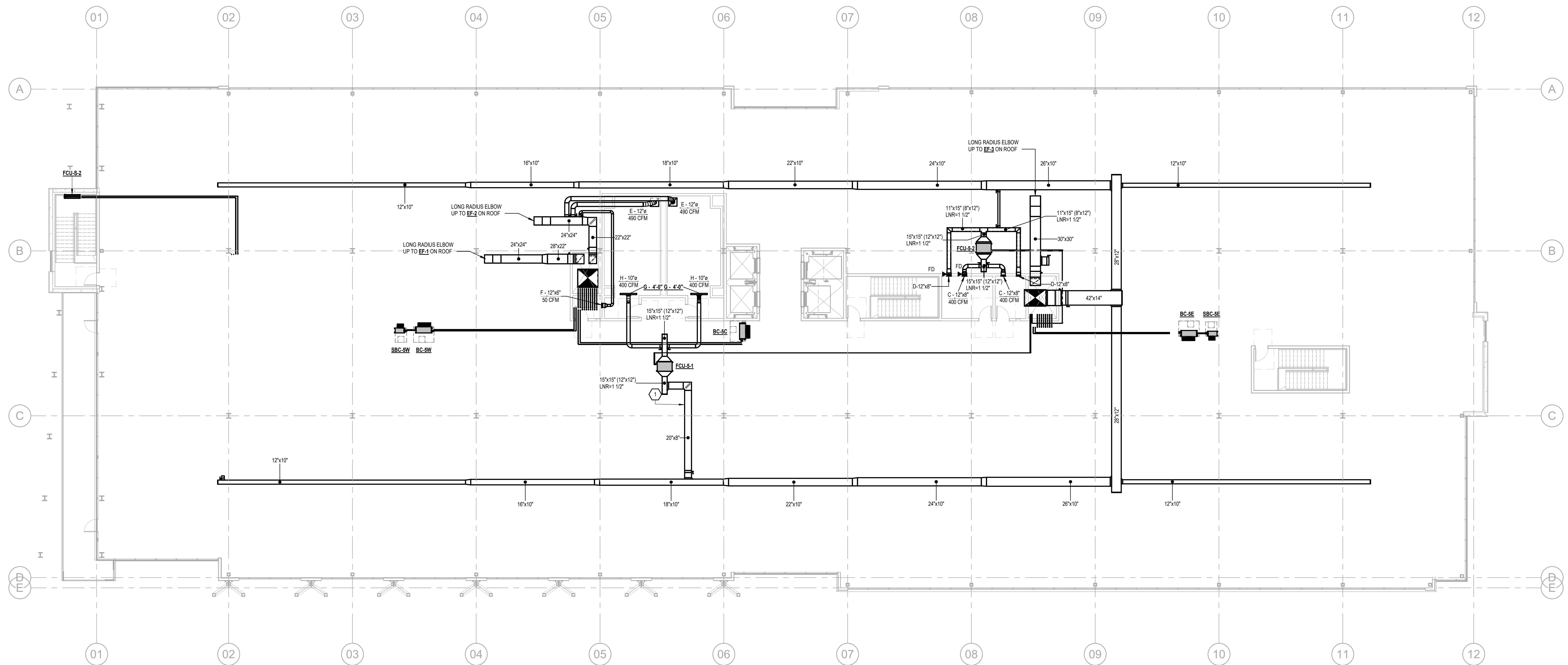
SHEET NO.

M01.004

LEVEL 4 FLOOR PLAN -  
MECHANICAL

COPYRIGHT © 2018 O'BRIEN ARCHITECTS. ALL RIGHTS RESERVED. NO PARTS OF THIS DRAWING MAY BE REPRODUCED OR TRANSMITTED IN ANY FORM OR BY ANY MEANS, ELECTRONIC OR MECHANICAL, WITHOUT THE PRIOR WRITTEN CONSENT FROM O'BRIEN ARCHITECTS.

NOTES BY SYMBOL  
1. UPON COMPLETION OF T1 WORK IN THIS LOCATION,  
REMOVE RA END CAP FOR ECU-1 AND REBALANCE  
O/A TO 80 CFM.



1 LEVEL 5 FLOOR PLAN - HVAC  
SCALE: 3/32" = 1'-0"

ISSUE LOG

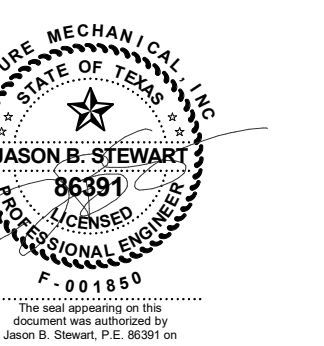
DATE	DESCRIPTION
08/21/18	50% PROGRESS SET
10/19/18	75% PROGRESS SET
11/01/18	PERMIT SET

ISSUE LOG

DATE	DESCRIPTION	DELTA
11/01/18	PERMIT SET	

O'BRIEN  
ARCHITECTS

5310 HARVEST HILL RD.  
SUITE 136  
DALLAS, TX 75230  
972.788.1010  
www.obrienarch.com



DATE SEAL	ARCH. PROJ. #	SCALE:
07/26/18	17129.01	REF. DRAWING

SHEET NO.

M01.005

LEVEL 5 FLOOR PLAN -  
MECHANICAL

COPYRIGHT © 2018 O'BRIEN ARCHITECTS. ALL RIGHTS RESERVED. NO PARTS  
HEREOF MAY BE REPRODUCED OR TRANSMITTED IN ANY FORM OR BY ANY  
METHOD, FOR ANY PURPOSE, WITHOUT THE PRIOR WRITTEN  
CONSENT FROM O'BRIEN ARCHITECTS.



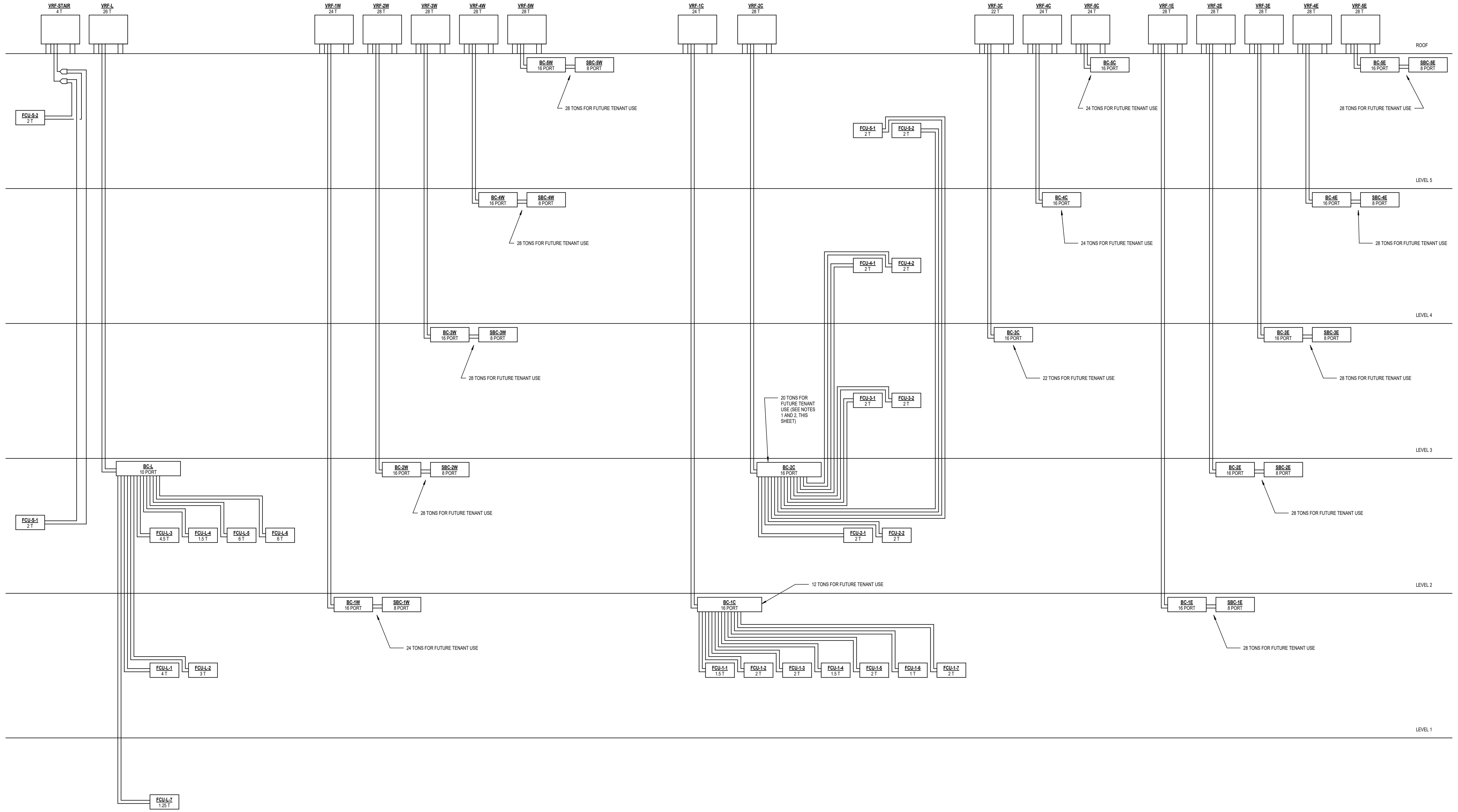








NOTES:  
1. DURING COMPLETION OF TENANT FINISHOUT, FCU-4-1 AND 4-2 ARE TO BE RE-PIPED TO BC-4C.  
2. DURING COMPLETION OF TENANT FINISHOUT, FCU-5-1 AND 5-2 ARE TO BE RE-PIPED TO BC-5C.



ISSUE LOG

DATE	DESCRIPTION
09/21/18	50% PROGRESS SET
10/19/18	75% PROGRESS SET
11/01/18	PERMIT SET

ISSUE LOG

DATE	DESCRIPTION	DELTA
11/01/18	PERMIT SET	



DATE SEAL	ARCH. PROJ. #	SCALE:
10/03/18	17129.01	REF. DRAWING

SHEET NO.

**M03.005**

VRF SYSTEM RISERS

COPYRIGHT © 2018 O'BRIEN ARCHITECTS. ALL RIGHTS RESERVED. NO PARTS OF THIS DRAWING MAY BE REPRODUCED OR TRANSMITTED IN ANY FORM OR BY ANY MEANS, ELECTRONIC OR MECHANICAL, WITHOUT THE PRIOR WRITTEN CONSENT OF O'BRIEN ARCHITECTS.

1 VRF RISER DIAGRAM  
SCALE: 1/4" = 1'-0"

CRAWLSPACE

**VRF SUB-BRANCH CONTROLLERS**

MARK	MANUF.	MODEL	LEVEL WHERE INSTALLED	VOLT.	PH.	HZ.	MCA@208 V	MCA@230 V
SBC-1E	Mitsubishi Electric	CMB-P108NU-GB1	LEVEL 1	208 V	1	60 Hz	0.64 A	0.58 A
SBC-1W	Mitsubishi Electric	CMB-P108NU-GB1	LEVEL 1	208 V	1	60 Hz	0.64 A	0.58 A
SBC-2E	Mitsubishi Electric	CMB-P108NU-GB1	LEVEL 2	208 V	1	60 Hz	0.64 A	0.58 A
SBC-2W	Mitsubishi Electric	CMB-P108NU-GB1	LEVEL 2	208 V	1	60 Hz	0.64 A	0.58 A
SBC-3E	Mitsubishi Electric	CMB-P108NU-GB1	LEVEL 3	208 V	1	60 Hz	0.64 A	0.58 A
SBC-3W	Mitsubishi Electric	CMB-P108NU-GB1	LEVEL 3	208 V	1	60 Hz	0.64 A	0.58 A
SBC-4E	Mitsubishi Electric	CMB-P108NU-GB1	LEVEL 4	208 V	1	60 Hz	0.64 A	0.58 A
SBC-4W	Mitsubishi Electric	CMB-P108NU-GB1	LEVEL 4	208 V	1	60 Hz	0.64 A	0.58 A
SBC-5E	Mitsubishi Electric	CMB-P108NU-GB1	LEVEL 5	208 V	1	60 Hz	0.64 A	0.58 A
SBC-5W	Mitsubishi Electric	CMB-P108NU-GB1	LEVEL 5	208 V	1	60 Hz	0.64 A	0.58 A

**ELECTRIC UNIT HEATER SCHEDULE**

MARK	MANUF.	MODEL	LEVEL SERVED	ROOM SERVED	HEATING CAP.	AIRFLOW	VOLT.	PH.	HZ.	AMPS
EUH-1	BERKO	HUHA348	LEVEL 1	FIRE RISER ROOM	3.0 kW	510 CFM	480 V	3	60 Hz	3.6 A

**VRF BRANCH CONTROLLERS**

MARK	MANUF.	MODEL	LEVEL WHERE INSTALLED	CONNECTED CAPACITY TO BC	VOLT.	PH.	HZ.	MCA@208 V	MCA@230 V
BC-1C	Mitsubishi Electric	CMB-P1016NU-HA1	LEVEL 1	162,000.00 Btu/h	208 V	1	60 Hz	1.65 A	1.9 A
BC-1E	Mitsubishi Electric	CMB-P1016NU-HA1	LEVEL 1	132,000.00 Btu/h	208 V	1	60 Hz	1.65 A	1.9 A
BC-1W	Mitsubishi Electric	CMB-P1016NU-HA1	LEVEL 1	162,000.00 Btu/h	208 V	1	60 Hz	1.65 A	1.9 A
BC-2C	Mitsubishi Electric	CMB-P1016NU-HA1	LEVEL 2	216,000.00 Btu/h	208 V	1	60 Hz	1.65 A	1.9 A
BC-2E	Mitsubishi Electric	CMB-P1016NU-HA1	LEVEL 2	216,000.00 Btu/h	208 V	1	60 Hz	1.65 A	1.9 A
BC-2W	Mitsubishi Electric	CMB-P1016NU-HA1	LEVEL 2	216,000.00 Btu/h	208 V	1	60 Hz	1.65 A	1.9 A
BC-3C	Mitsubishi Electric	CMB-P1016NU-HA1	LEVEL 3	216,000.00 Btu/h	208 V	1	60 Hz	1.65 A	1.9 A
BC-3E	Mitsubishi Electric	CMB-P1016NU-HA1	LEVEL 3	216,000.00 Btu/h	208 V	1	60 Hz	1.65 A	1.9 A
BC-3W	Mitsubishi Electric	CMB-P1016NU-HA1	LEVEL 3	192,000.00 Btu/h	208 V	1	60 Hz	1.65 A	1.9 A
BC-4C	Mitsubishi Electric	CMB-P1016NU-HA1	LEVEL 4	216,000.00 Btu/h	208 V	1	60 Hz	1.65 A	1.9 A
BC-4E	Mitsubishi Electric	CMB-P1016NU-HA1	LEVEL 4	216,000.00 Btu/h	208 V	1	60 Hz	1.65 A	1.9 A
BC-4W	Mitsubishi Electric	CMB-P1016NU-HA1	LEVEL 4	216,000.00 Btu/h	208 V	1	60 Hz	1.65 A	1.9 A
BC-5C	Mitsubishi Electric	CMB-P1016NU-HA1	LEVEL 5	216,000.00 Btu/h	208 V	1	60 Hz	1.65 A	1.9 A
BC-5E	Mitsubishi Electric	CMB-P1016NU-HA1	LEVEL 5	216,000.00 Btu/h	208 V	1	60 Hz	1.65 A	1.9 A
BC-5W	Mitsubishi Electric	CMB-P1016NU-HA1	LEVEL 5	216,000.00 Btu/h	208 V	1	60 Hz	1.65 A	1.9 A
BC-L	Mitsubishi Electric	CMB-P1010NU-HA1	LEVEL 2	183,000.00 Btu/h	208 V	1	60 Hz	1.60 A	1.7 A

**VRF DUCTED FAN-COIL UNIT SCHEDULE**

MARK	MANUF.	MODEL	LEVEL WHERE INSTALLED	NOM. COOLING CAP.	NOM. HEATING CAP.	SUPPLY AIRFLOW	O/A	VOLT.	PH.	HZ.	MCA	MOCP
FCU-1-1	Mitsubishi Electric	PEFY-P18NMAU-E3	LEVEL 1	18000.0 Btu/h	20000.0 Btu/h	400 CFM	5 CFM	208 V	1	60 Hz	1.56 A	15.0 A
FCU-1-2	Mitsubishi Electric	PEFY-P24NMAU-E3	LEVEL 1	24000.0 Btu/h	27000.0 Btu/h	800 CFM	800 CFM	208 V	1	60 Hz	2.73 A	15.0 A
FCU-1-3	Mitsubishi Electric	PEFY-P24NMAU-E3	LEVEL 1	24000.0 Btu/h	27000.0 Btu/h	800 CFM	15 CFM	208 V	1	60 Hz	2.73 A	15.0 A
FCU-1-4	Mitsubishi Electric	PEFY-P18NMAU-E3	LEVEL 1	18000.0 Btu/h	20000.0 Btu/h	400 CFM	40 CFM	208 V	1	60 Hz	1.56 A	15.0 A
FCU-1-5	Mitsubishi Electric	PEFY-P24NMAU-E3	LEVEL 1	24000.0 Btu/h	27000.0 Btu/h	800 CFM	40 CFM	208 V	1	60 Hz	2.73 A	15.0 A
FCU-1-6	Mitsubishi Electric	PEFY-P12NMAU-E3	LEVEL 1	12000.0 Btu/h	13500.0 Btu/h	400 CFM	85 CFM	208 V	1	60 Hz	1.56 A	15.0 A
FCU-1-7	Mitsubishi Electric	PEFY-P24NMAU-E3	LEVEL 1	24000.0 Btu/h	27000.0 Btu/h	800 CFM	95 CFM	208 V	1	60 Hz	2.73 A	15.0 A
FCU-2-1	Mitsubishi Electric	PEFY-P24NMAU-E3	LEVEL 2	24000.0 Btu/h	27000.0 Btu/h	800 CFM	800 CFM	208 V	1	60 Hz	2.73 A	15.0 A
FCU-2-2	Mitsubishi Electric	PEFY-P24NMAU-E3	LEVEL 2	24000.0 Btu/h	27000.0 Btu/h	800 CFM	15 CFM	208 V	1	60 Hz	2.73 A	15.0 A
FCU-3-1	Mitsubishi Electric	PEFY-P24NMAU-E3	LEVEL 3	24000.0 Btu/h	27000.0 Btu/h	800 CFM	800 CFM	208 V	1	60 Hz	2.73 A	15.0 A
FCU-3-2	Mitsubishi Electric	PEFY-P24NMAU-E3	LEVEL 3	24000.0 Btu/h	27000.0 Btu/h	800 CFM	15 CFM	208 V	1	60 Hz	2.73 A	15.0 A
FCU-4-1	Mitsubishi Electric	PEFY-P24NMAU-E3	LEVEL 4	24000.0 Btu/h	27000.0 Btu/h	800 CFM	800 CFM	208 V	1	60 Hz	2.73 A	15.0 A
FCU-4-2	Mitsubishi Electric	PEFY-P24NMAU-E3	LEVEL 4	24000.0 Btu/h	27000.0 Btu/h	800 CFM	15 CFM	208 V	1	60 Hz	2.73 A	15.0 A
FCU-5-1	Mitsubishi Electric	PEFY-P24NMAU-E3	LEVEL 5	24000.0 Btu/h	27000.0 Btu/h	800 CFM	800 CFM	208 V	1	60 Hz	2.73 A	15.0 A
FCU-5-2	Mitsubishi Electric	PEFY-P24NMAU-E3	LEVEL 5	24000.0 Btu/h	27000.0 Btu/h	800 CFM	15 CFM	208 V	1	60 Hz	2.73 A	15.0 A
FCU-L-1	Mitsubishi Electric	PEFY-P48NMAU-E3	LEVEL 1	48000.0 Btu/h	54000.0 Btu/h	1480 CFM	270 CFM	208 V	1	60 Hz	3.51 A	15.0 A
FCU-L-2	Mitsubishi Electric	PEFY-P36NMAU-E3	LEVEL 1	36000.0 Btu/h	40000.0 Btu/h	1160 CFM	210 CFM	208 V	1	60 Hz	3.50 A	15.0 A
FCU-L-3	Mitsubishi Electric	PEFY-P54NMAU-E3	LEVEL 2	54000.0 Btu/h	60000.0 Btu/h	1480 CFM	20 CFM	208 V	1	60 Hz	3.51 A	15.0 A
FCU-L-4	Mitsubishi Electric	PEFY-P18NMAU-E3	LEVEL 2	18000.0 Btu/h	20000.0 Btu/h	600 CFM	200 CFM	208 V	1	60 Hz	1.56 A	15.0 A
FCU-L-5	Mitsubishi Electric	PEFY-P72NMAU-E3	LEVEL 2	72000.0 Btu/h	80000.0 Btu/h	2500 CFM	35 CFM	208 V	1	60 Hz	7.70 A	15.0 A
FCU-L-6	Mitsubishi Electric	PEFY-P72NMAU-E3	LEVEL 2	72000.0 Btu/h	80000.0 Btu/h	2500 CFM	35 CFM	208 V	1	60 Hz	7.70 A	15.0 A
FCU-L-7	Mitsubishi Electric	PEFY-P15NMAU-E3	LEVEL 0	15000.0 Btu/h	17000.0 Btu/h	490 CFM	50 CFM	208 V	1	60 Hz	1.45 A	15.0 A

**VRF CONDENSING UNIT SCHEDULE**

MARK	MANUF.	MODEL	MODULES	LEVEL WHERE INSTALLED	NOM. COOLING CAP.	NOM. HEATING CAP.	VOLT.	PH.	HZ.	MCA - MOD 1	MCA - MOD 2	MOCP - MOD 1	MOCP - MOD 2
VRF-1C	Mitsubishi Electric	PURY-P264YSLMU-A	P144, P120	ROOF	264000.0 Btu/h	295000.0 Btu/h	460 V	3	60 Hz	24.00 A	19.0 A	35.0 A	30.0 A
VRF-1E	Mitsubishi Electric	PURY-P336YSLMU-A	P168, P168	ROOF	336000.0 Btu/h	378000.0 Btu/h	460 V	3	60 Hz	31.00 A	31.0 A	50.0 A	50.0 A
VRF-1W	Mitsubishi Electric	PURY-P264YSLMU-A	P144, P120	ROOF	264000.0 Btu/h	295000.0 Btu/h	460 V	3	60 Hz	24.00 A	19.0 A	35.0 A	30.0 A
VRF-2C	Mitsubishi Electric	PURY-P336YSLMU-A	P168, P168	ROOF	336000.0 Btu/h	378000.0 Btu/h	460 V	3	60 Hz	31.00 A	31.0 A	50.0 A	50.0 A
VRF-2E	Mitsubishi Electric	PURY-P336YSLMU-A	P168, P168	ROOF	336000.0 Btu/h	378000.0 Btu/h	460 V	3	60 Hz	31.00 A	31.0 A	50.0 A	50.0 A
VRF-2W	Mitsubishi Electric	PURY-P336YSLMU-A	P168, P168	ROOF	336000.0 Btu/h	378000.0 Btu/h	460 V	3	60 Hz	31.00 A	31.0 A	50.0 A	50.0 A
VRF-3C	Mitsubishi Electric	PURY-P264YSLMU-A	P144, P120	ROOF	264000.0 Btu/h	295000.0 Btu/h	460 V	3	60 Hz	24.00 A	19.0 A	35.0 A	30.0 A
VRF-3E	Mitsubishi Electric	PURY-P336YSLMU-A	P168, P168	ROOF	336000.0 Btu/h	378000.0 Btu/h	460 V	3	60 Hz	31.00 A	31.0 A	50.0 A	50.0 A
VRF-3W	Mitsubishi Electric	PURY-P336YSLMU-A	P168, P168	ROOF	336000.0 Btu/h	378000.0 Btu/h	460 V	3	60 Hz	31.00 A	31.0 A	50.0 A	50.0 A
VRF-4C	Mitsubishi Electric	PURY-P288YSLMU-A	P144, P144	ROOF	288000.0 Btu/h	323000.0 Btu/h	460 V	3	60 Hz	24.00 A	24.0 A	35.0 A	35.0 A
VRF-4E	Mitsubishi Electric	PURY-P336YSLMU-A	P168, P168	ROOF	336000.0 Btu/h	378000.0 Btu/h	460 V	3	60 Hz	31.00 A	31.0 A	50.0 A	50.0 A
VRF-4W	Mitsubishi Electric	PURY-P336YSLMU-A	P168, P168	ROOF	336000.0 Btu/h	378000.0 Btu/h	460 V	3	60 Hz	31.00 A	31.0 A	50.0 A	50.0 A
VRF-5C	Mitsubishi Electric	PURY-P288YSLMU-A	P144, P144	ROOF	288000.0 Btu/h	323000.0 Btu/h	460 V	3	60 Hz	24.00 A	24.0 A	35.0 A	35.0 A
VRF-5E	Mitsubishi Electric	PURY-P336YSLMU-A	P168, P168	ROOF	336000.0 Btu/h	378000.0 Btu/h	460 V	3	60 Hz	31.00 A	31.0 A	50.0 A	50.0 A
VRF-5W	Mitsubishi Electric	PURY-P336YSLMU-A	P168, P168	ROOF	336000.0 Btu/h	378000.0 Btu/h	460 V	3	60 Hz	31.00 A	31.0 A	50.0 A	50.0 A
VRF-L	Mitsubishi Electric	PURY-P312YSLMU-A	P168, P144	ROOF	312000.0 Btu/h	350000.0 Btu/h	460 V	3	60 Hz	31.00 A	24.0 A	50.0 A	35.0 A
VRF-STAIR	Mitsubishi Electric	PUMY-P48NKMU1	P48	ROOF	48000.0 Btu/h	54000.0 Btu/h	208 V	1	60 Hz	31.00 A		40.0 A	

**DEDICATED OUTSIDE AIR UNIT SCHEDULE**

MARK	MANUF.	MODEL	EER	SUPPLY FAN PERFORMANCE				COOLING PERFORMANCE				ELECTRIC HEAT CAPACITY	OUTSIDE AIRFLOW	ELECTRICAL DATA									
				SUPPLY AIRFLOW	E.S.P.	MOTOR QTY.	COMBINED SUPPLY FAN MOTOR NOMINAL HP (EA)	AMBIENT AIR TEMP	ENTERING AIR TEMP, DB	ENTERING AIR TEMP, WB	LEAVING AIR TEMP, DB			LEAVING AIR TEMP, WB	VOLTAGE	PH.	HZ.	MCA	MOCP	DISCONNECT SWITCH NOTES			
DOAS-1	ADDISON	PROA 540DXL	14.4	9,540 CFM	2.00 in-wg	1	8.03 hp	10.00 hp	85.0 °F	83.7 °F	75.4 °F	54.4 °F	54.4 °F	312,300.00 Btu/h	689,400.00 Btu/h	150.0 kW	9,540 CFM	460 V	3	60 Hz	190.4 A	225.5 A	BY ELECTRICIAN
DOAS-2	ADDISON	PROA 840 E8	14.7	14,460 CFM	2.00 in-wg	2	6.86 hp	10.00 hp	85.0 °F	83.7 °F	75.4 °F	55.0 °F	55.0 °F	462,700.00 Btu/h	1,020,500.00 Btu/h	200.0 kW	14,460 CFM	460 V	3	60 Hz	271.6 A	300.0 A	BY ELECTRICIAN

**FAN SCHEDULE**

MARK	MANUF.	MODEL	LEVEL LOCATED	SERVES	DESCRIPTION	DRIVE TYPE	FAN PERFORMANCE				ELECTRICAL				NOTES	ACCESSORIES
							AIRFLOW	E.S.P.	FAN BRAKE HP	FAN RPM	VOLT.	PH.	HZ.	MOTOR NOMINAL HP		
EF-1	Greenheck	GB-240HP-VGD-30	ROOF	BUILDING PRESSURE RELIEF FOR LEVEL 1 AND 2	Belt Drive Centrifugal Roof Exhaust Fan	Belt	5560 CFM	1.00 in-wg	2.043 hp	1069	460 V	3	60 Hz	3.000 hp		
EF-2	Greenheck	GB-240HP-30	ROOF	GENERAL RESTROOM/JAN. EXHAUST LEVELS 1 THRU 5	Belt Drive Centrifugal Roof Exhaust Fan	Belt	5150 CFM	1.00 in-wg	1.778 hp	1018	460 V	3	60 Hz	3.000 hp		
EF-3	Greenheck	GB-300-VGD-30	ROOF	BUILDING PRESSURE RELIEF FOR LEVEL 3 THRU 5	Belt Drive Centrifugal Roof Exhaust Fan	Belt	8475 CFM	1.00 in-wg	2.839 hp	731	460 V	3	60 Hz	3.000 hp		
EF-4	Greenheck	SE1-18-424-VG	LEVEL 0		Sidewall Direct Drive Fan	Direct	3000 CFM	0.20 in-wg	0.502 hp	1598	115 V	1	60 Hz	0.750 hp		

**ISSUE LOG**

DATE	DESCRIPTION	DELTA
09/21/18	40% PROGRESS SET	
10/19/18	75% PROGRESS SET	
11/01/18	PERMIT SET	

**ISSUE LOG**

DATE	DESCRIPTION	DELTA
11/01/18	PERMIT SET	

