

HOOD INFORMATION

HOOD NO.	MARK	MODEL	HOOD DIMENSIONS (IN.)			HOOD CONSTR.	COOKING LOAD / DUTY RATING	EXHAUST					SUPPLY		TOTAL WEIGHT LBS.	SECTION LOCATION	
			LENGTH	WIDTH	HEIGHT			TOTAL CFM	COLLAR(S)			MUA CFM	AC CFM				
1	KH-1	XXEW-100-S	100	54	24	430 SS WHERE EXPOSED	HEAVY	2000	10	19		2000	0.66	1893		280	LEFT
2	KH-1	XXEW-100-S	100	54	24	430 SS WHERE EXPOSED	HEAVY	2000	10	19		2000	0.66	1707		283	RIGHT

HOOD INFORMATION

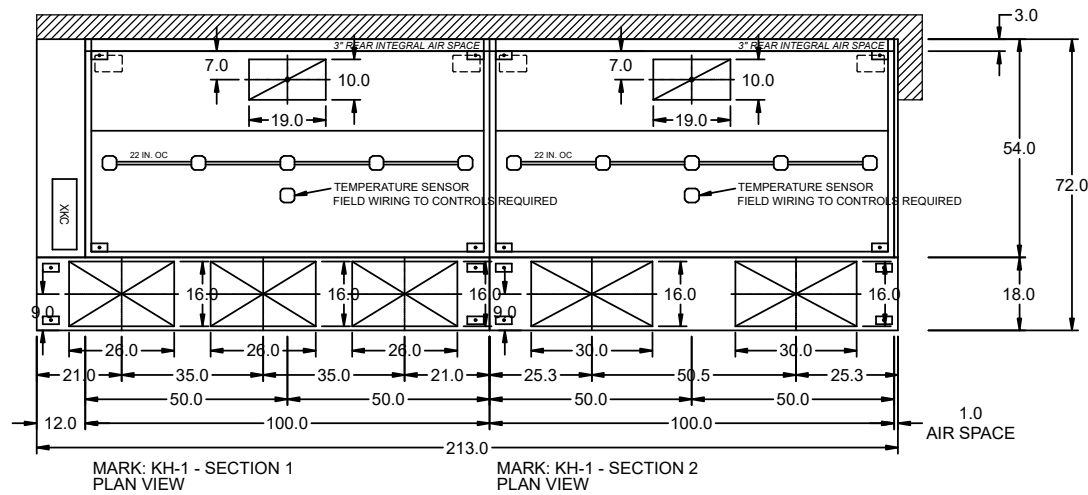
HOOD NO.	MARK	LIGHTING DETAILS			GREASE FILTRATION DETAILS			UTILITY CABINET(S)				
		FIXTURE TYPE BULB / LAMP INFO	QTY	FOOT CANDLES	TYPE / MODEL MATERIAL	QTY	SIZE (IN.) L H	LOCATION	FIRE SYSTEM		CONTROLS	
1	KH-1	INCANDESCENT (GLOBE) 100W A19 (BULBS NOT INCL.)	5	48.51	X-TRACTOR (SPARK ARRESTOR INCL.) STAINLESS STEEL	5	16 20	LEFT			XKC	TOUCHSCREEN
2	KH-1	INCANDESCENT (GLOBE) 100W A19 (BULBS NOT INCL.)	5	48.51	X-TRACTOR (SPARK ARRESTOR INCL.) STAINLESS STEEL	5	16 20					

SUPPLY PLENUM INFORMATION

HOOD NO.	MARK	POS.	TYPE	SIZE (IN.)		INSULATED	DAMPER(S)	LED LIGHT(S)		TOTAL CFM	TOTAL S.P.	COLLARS						
				L	W			H	SUPPLIED			QTY	TYPE	MOUNTING	QTY	W	L	DIA.
1	KH-1	FRONT	ASP	112	18	4	NO	YES	NO	1893	0.01	MUA	FACTORY	3	16	26	631	218
2	KH-1	FRONT	ASP	101	18	4	NO	YES	NO	1707	0.01	MUA	FACTORY	2	16	30	854	256

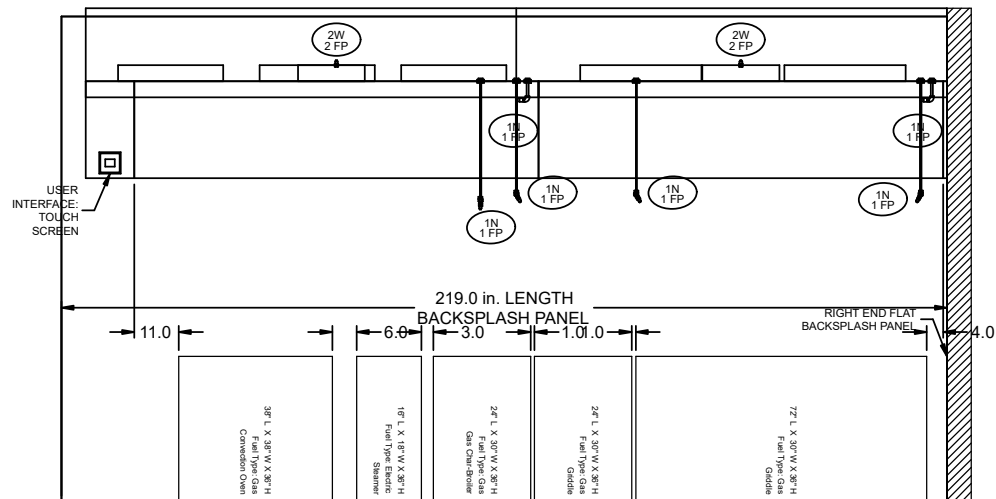
HOOD OPTIONS

UL 710 LISTED W/ OUT EXHAUST FIRE DAMPER - UL #R25625  
 BACK INTEGRAL AIR SPACE - 3 IN WIDE  
 RIGHT NON-INTEGRAL AIR SPACE - 1 IN THICK - ZERO CLEARANCE  
 18 IN HIGH CEILING ENCLOSURES - FRONT LEFT RIGHT - FIELD INSTALLED  
 CONTINUOUS CAPTURE  
 FACTORY MOUNTED EXHAUST COLLAR(S)  
 BACKSPLASH 120.00 IN HIGH 219.00 IN LONG  
 RIGHT SIDESPLASH 80.00 IN HIGH 15.00 IN LONG  
 PERFORMANCE ENHANCING LIP (PEL) TECHNOLOGY  
 STANDING SEAM CONSTRUCTION FOR SUPERIOR STRENGTH



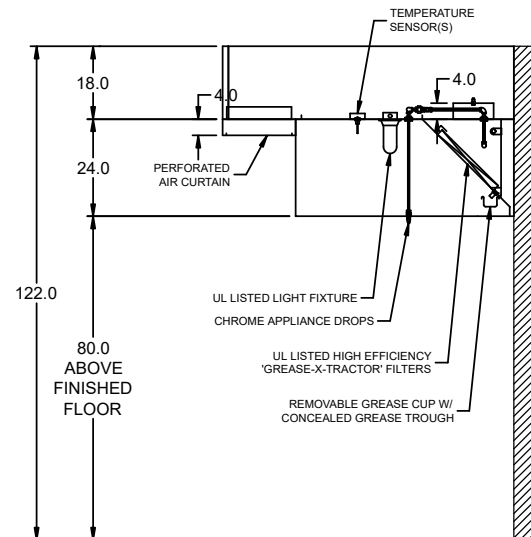
MARK: KH-1 - SECTION 1 PLAN VIEW

MARK: KH-1 - SECTION 2 PLAN VIEW

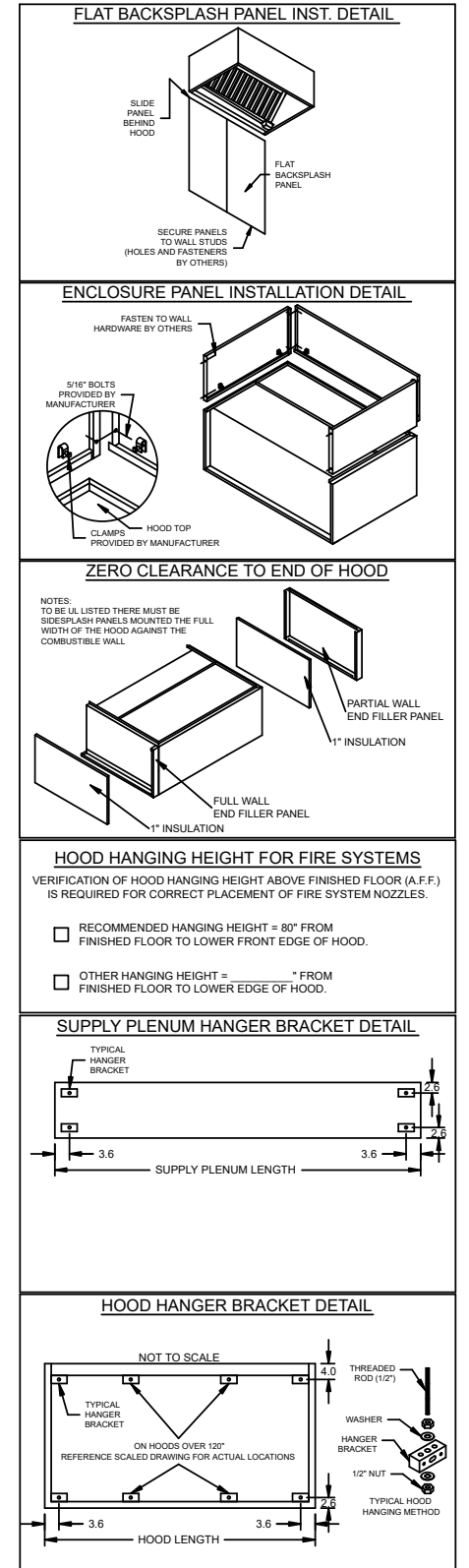


MARK: KH-1 - SECTION 1 ELEVATION VIEW

MARK: KH-1 - SECTION 2 ELEVATION VIEW



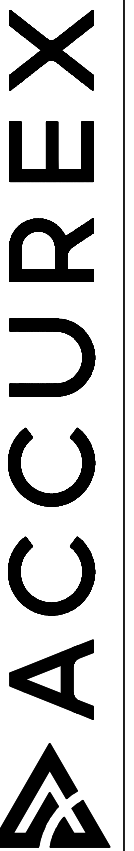
MARK: KH-1 (LAST HOOD IN ROW) SECTION VIEW



GUADALAJARA WAUKEE

PROJECT: 10/20/2023

MARK: KH-1  
 ACCUREX W/ IA - 1970  
 PHILLIP KRAFT  
 PHILLIP.KRAFT@ACCUREX.COM  
 (262)227-7865



HOOD INFORMATION

HOOD NO.	MARK	MODEL	HOOD DIMENSIONS (IN.)			HOOD CONSTR.	COOKING LOAD / DUTY RATING	EXHAUST					SUPPLY		TOTAL WEIGHT LBS.	SECTION LOCATION	
			LENGTH	WIDTH	HEIGHT			TOTAL CFM	COLLAR(S)			MUA CFM	AC CFM				
1	KH-2	XXEW-144-S	144	54	24	430 SS WHERE EXPOSED	HEAVY	2800	9	27		2800	0.685	2520		385	SINGLE

HOOD INFORMATION

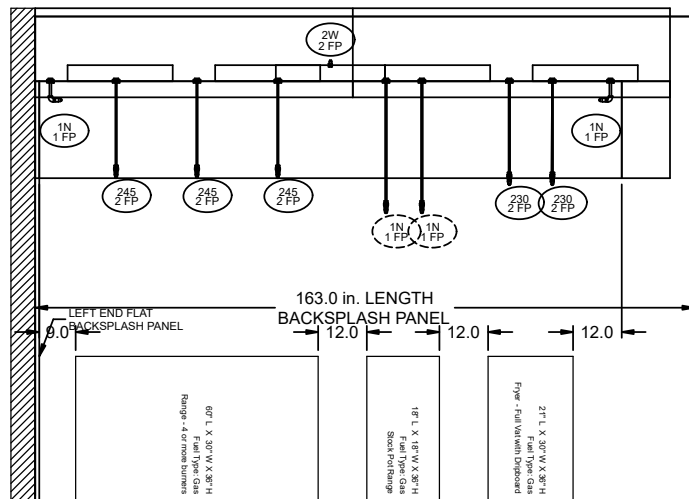
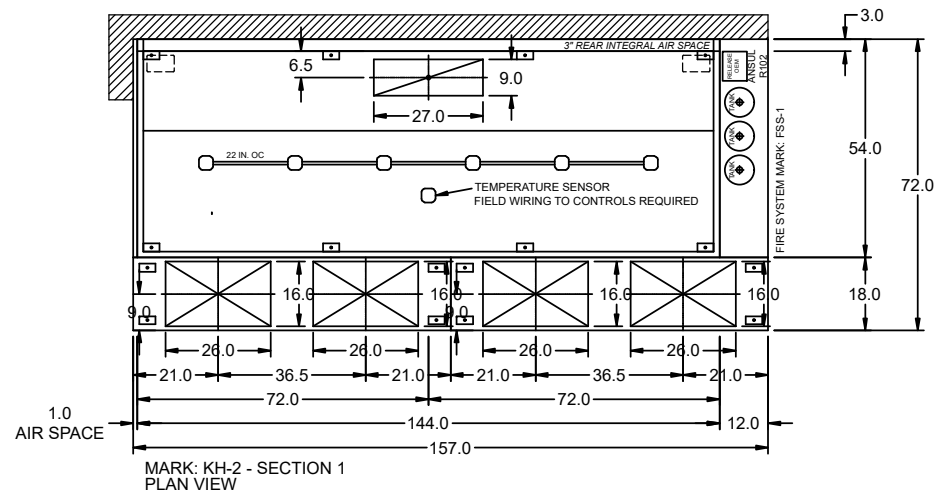
HOOD NO.	MARK	LIGHTING DETAILS			GREASE FILTRATION DETAILS			UTILITY CABINET(S)					
		FIXTURE TYPE	BULB / LAMP INFO	QTY	FOOT CANDLES	TYPE / MODEL MATERIAL	QTY	SIZE (IN.) L H	LOCATION	FIRE SYSTEM		CONTROLS	
1	KH-2	INCANDESCENT (GLOBE)	100W A19 (BULBS NOT INCL.)	6	49.51	X-TRACTOR (SPARK ARRESTOR INCL.) STAINLESS STEEL	4	16 20	RIGHT	ANSUL R102	9		

SUPPLY PLENUM INFORMATION

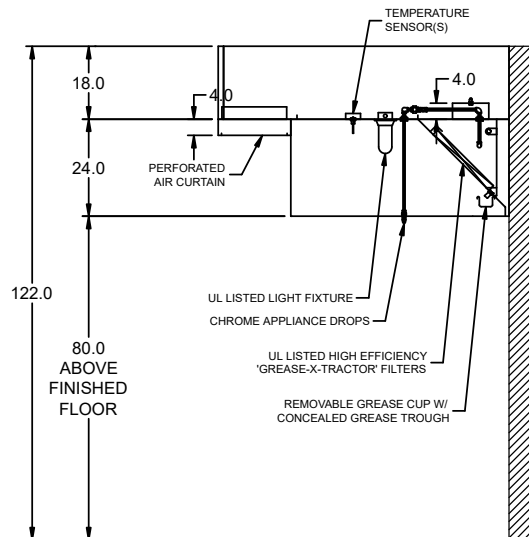
HOOD NO.	MARK	POS.	TYPE	SIZE (IN.)			INSULATED	DAMPER(S)	LED LIGHT(S)		TOTAL CFM	TOTAL S.P.	COLLARS						
				L	W	H			SUPPLIED	QTY			TYPE	MOUNTING	QTY	W	L	DIA.	CFM
1	KH-2	FRONT	ASP	78.5	18	4	NO	YES	NO		1260	0.01	MUA	FACTORY	2	16	26	630	218
1	KH-2	FRONT	ASP	78.5	18	4	NO	YES	NO		1260	0.01	MUA	FACTORY	2	16	26	630	218

HOOD OPTIONS

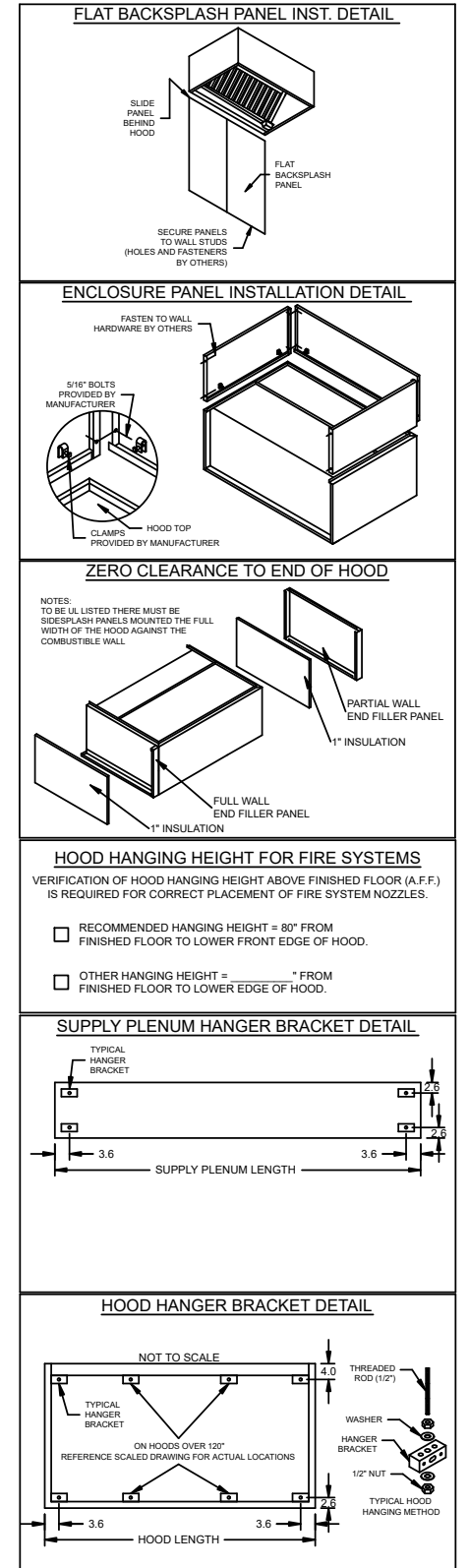
UL 710 LISTED W/ OUT EXHAUST FIRE DAMPER - UL #R25625  
 BACK INTEGRAL AIR SPACE - 3 IN WIDE  
 LEFT NON-INTEGRAL AIR SPACE - 1 IN THICK - ZERO CLEARANCE  
 18 IN HIGH CEILING ENCLOSURES - FRONT LEFT RIGHT - FIELD INSTALLED  
 FACTORY MOUNTED EXHAUST COLLAR(S)  
 BACKSPLASH 120.00 IN HIGH 163.00 IN LONG  
 LEFT SIDESPLASH 80.00 IN HIGH 15.00 IN LONG  
 PERFORMANCE ENHANCING LIP (PEL) TECHNOLOGY  
 STANDING SEAM CONSTRUCTION FOR SUPERIOR STRENGTH



MARK: KH-2 - SECTION 1 ELEVATION VIEW



MARK: KH-2 SECTION VIEW



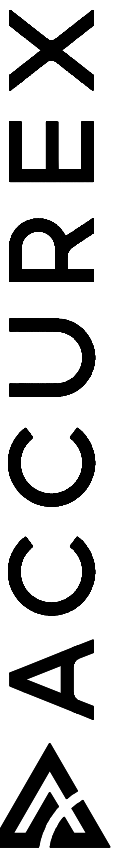
MARK: KH-2 SECTION VIEW



PROJECT: 10/20/2023  
 MARK: KH-2

PROJECT: 10/20/2023  
 MARK: KH-2

ACCUREX W/ IA - 1970  
 PHILLIP KRAFT  
 PHILLIP.KRAFT@ACCUREX.COM  
 (262)227-7865



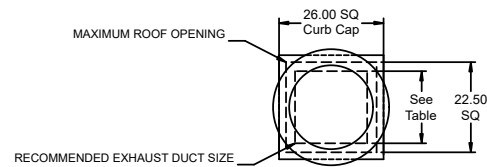
Direct Drive Upblast Centrifugal Roof Exhaust Fan

MARK INFORMATION		FAN INFORMATION						MOTOR INFORMATION					
QTY	MARK	MODEL	VOLUME (CFM)	TOTAL EXTERNAL SP (IN WG)	FAN RPM	OPERATING POWER (HP)	WEIGHT (LB.)	SIZE (HP)	V/C/P	ENCLOSURE	MOTOR RPM	WINDINGS	NEC FLA*
1	EF-1	XCUE-140-VG	2,000	1.2	1,603	0.76	92	1	208/60/1	OP	1725	1	8.8

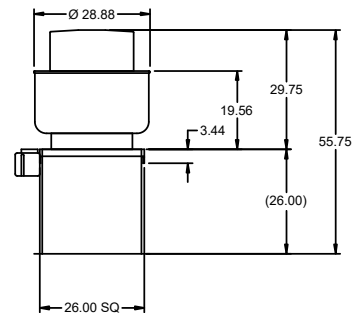
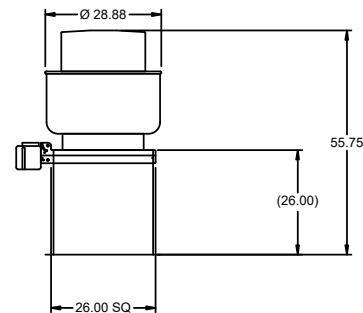
\*NEC FLA - Based on table 430.250 or 430.248 of National Electrical Code 2020. Actual motor FLA may vary for sizing thermal overload, consult factory

EF-1 : SELECTED OPTIONS AND ACCESSORIES

One piece fully welded windband  
 Tapered bushing wheel hub  
 Breather tube outlet area min. 4.4 sq. in. (sizes 99-480), 2.0 sq. in. (sizes 60-95)  
 Min. windband material thickness: 0.051" aluminum (060-240), 0.064" aluminum (240HP, 240XP), 0.080" aluminum (sizes 300-480)  
 Larger Curb Cap Size - 26 Square  
 UL/cUL 705 Listed - Supplement SC - "Power Ventilators for Restaurant Exh. Appliances" (Formerly UL 762)  
 Switch, NEMA-3R, Toggle,  
 Hinge, Factory Installed  
 High Temp Curb Seal Rated for Continuous Duty at 1500 F (Factory Attached)  
 Grease Trap (PN 475538)  
 Conduit Chase Qty 1

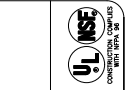
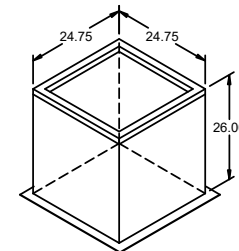


DUCT TYPE	SIZE
STANDARD	18 SQ
FIRE-WRAPPED	12 SQ



DUCT DIMENSIONS ARE LARGEST POSSIBLE DUCT TO FIT THROUGH CURB.  
 CONSULT SYSTEM DESIGN ENGINEER FOR RECOMMENDED DUCT SIZE.

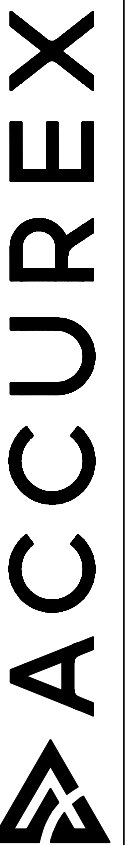
OVERALL HEIGHT MAY BE GREATER DEPENDING ON  
 MOTOR, ADAPTER, AND/OR HINGE BASE.



GUADALAJARA WAUKEE

PROJECT  
10/20/2023

ACCUREX W/IA - 1970  
 PHILLIP KRAFT  
 PHILLIP.KRAFT@ACCUREX.COM  
 (262)227-7865



MARK  
EF-1

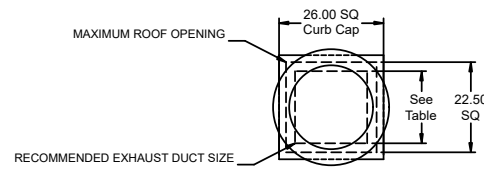
Direct Drive Upblast Centrifugal Roof Exhaust Fan

MARK INFORMATION		FAN INFORMATION						MOTOR INFORMATION					
QTY	MARK	MODEL	VOLUME (CFM)	TOTAL EXTERNAL SP (IN WG)	FAN RPM	OPERATING POWER (HP)	WEIGHT (LB.)	SIZE (HP)	V/C/P	ENCLOSURE	MOTOR RPM	WINDINGS	NEC FLA*
1	EF-2	XCUE-140-VG	2,000	1.2	1,603	0.76	92	1	208/60/1	OP	1725	1	8.8

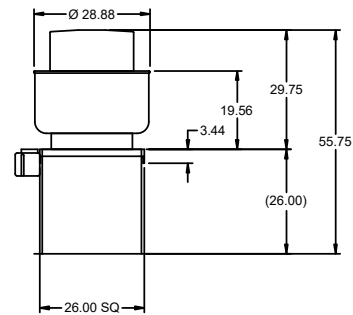
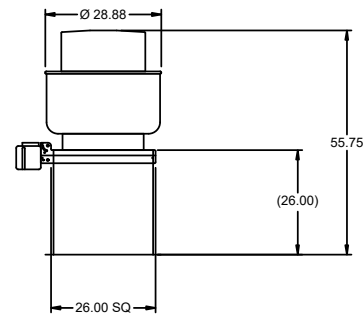
\*NEC FLA - Based on table 430.250 or 430.248 of National Electrical Code 2020. Actual motor FLA may vary for sizing thermal overload, consult factory"

EF-2 : SELECTED OPTIONS AND ACCESSORIES

One piece fully welded windband  
 Tapered bushing wheel hub  
 Breather tube outlet area min. 4.4 sq. in. (sizes 99-480), 2.0 sq. in. (sizes 60-95)  
 Min. windband material thickness: 0.051" aluminum (060-240), 0.064" aluminum (240HP, 240XP), 0.080" aluminum (sizes 300-480)  
 Larger Curb Cap Size - 26 Square  
 UL/cUL 705 Listed - Supplement SC - "Power Ventilators for Restaurant Exh. Appliances" (Formerly UL 762)  
 Switch, NEMA-3R, Toggle,  
 Hinge, Factory Installed  
 High Temp Curb Seal Rated for Continuous Duty at 1500 F (Factory Attached)  
 Grease Trap (PN 475538)  
 Conduit Chase Qty 1

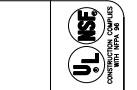
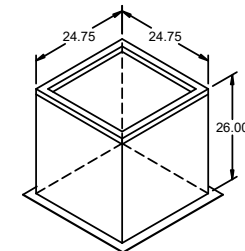


DUCT TYPE	SIZE
STANDARD	18 SQ
FIRE-WRAPPED	12 SQ



DUCT DIMENSIONS ARE LARGEST POSSIBLE DUCT TO FIT THROUGH CURB. CONSULT SYSTEM DESIGN ENGINEER FOR RECOMMENDED DUCT SIZE.

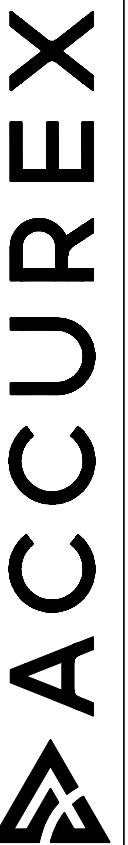
OVERALL HEIGHT MAY BE GREATER DEPENDING ON MOTOR, ADAPTER, AND/OR HINGE BASE.



GUADALAJARA WAUKEE

PROJECT  
10/20/2023

ACCUREX W/IA - 1970  
 PHILLIP KRAFT  
 PHILLIP.KRAFT@ACCUREX.COM  
 (262)227-7865



MARK  
EF-2

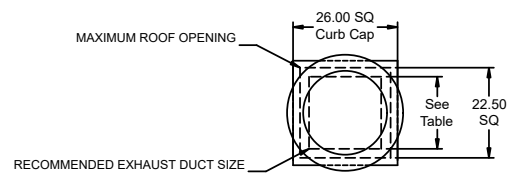
Direct Drive Upblast Centrifugal Roof Exhaust Fan

MARK INFORMATION		FAN INFORMATION						MOTOR INFORMATION					
QTY	MARK	MODEL	VOLUME (CFM)	TOTAL EXTERNAL SP (IN WG)	FAN RPM	OPERATING POWER (HP)	WEIGHT (LB.)	SIZE (HP)	V/C/P	ENCLOSURE	MOTOR RPM	WINDINGS	NEC FLA*
1	EF-3	XCUE-160-A	2,800	1.2	1,392	0.99	115	2	208/60/3	OP	1725	1	7.5

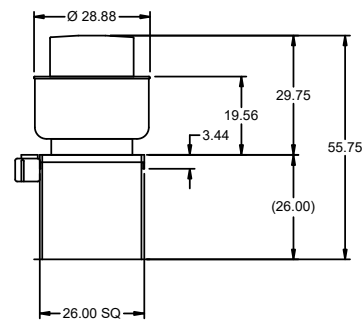
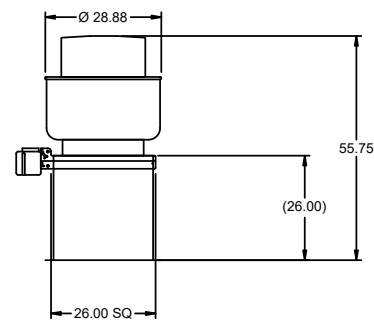
\*NEC FLA - Based on table 430.250 or 430.248 of National Electrical Code 2020. Actual motor FLA may vary for sizing thermal overload, consult factory

EF-3 : SELECTED OPTIONS AND ACCESSORIES

Motor VFD Rated without Shaft Grounding Protection  
 One piece fully welded windband  
 Tapered bushing wheel hub  
 Breather tube outlet area min. 4.4 sq. in. (sizes 99-480), 2.0 sq. in. (sizes 60-95)  
 Min. windband material thickness: 0.051" aluminum (060-240), 0.064" aluminum (240HP, 240XP), 0.080" aluminum (sizes 300-480)  
 Larger Curb Cap Size - 26 Square  
 UL/cUL 705 Listed - Supplement SC - "Power Ventilators for Restaurant Exh. Appliances" (Formerly UL 762)  
 Switch, NEMA-3R, Toggle, Hinge, Factory Installed  
 High Temp Curb Seal Rated for Continuous Duty at 1500 F (Factory Attached)  
 Grease Trap (PN 475538)  
 Conduit Chase Qty 1

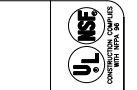
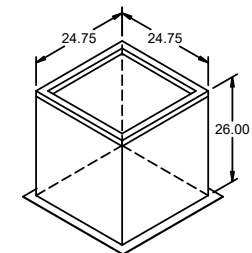


DUCT TYPE	SIZE
STANDARD	18 SQ
FIRE-WRAPPED	12 SQ



DUCT DIMENSIONS ARE LARGEST POSSIBLE DUCT TO FIT THROUGH CURB.  
 CONSULT SYSTEM DESIGN ENGINEER FOR RECOMMENDED DUCT SIZE.

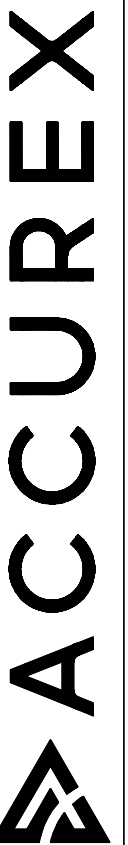
OVERALL HEIGHT MAY BE GREATER DEPENDING ON  
 MOTOR, ADAPTER, AND/OR HINGE BASE.



GUADALAJARA WAUKEE

PROJECT  
10/20/2023

ACCUREX W/IA - 1970  
 PHILLIP KRAFT  
 PHILLIP.KRAFT@ACCUREX.COM  
 (262)227-7865

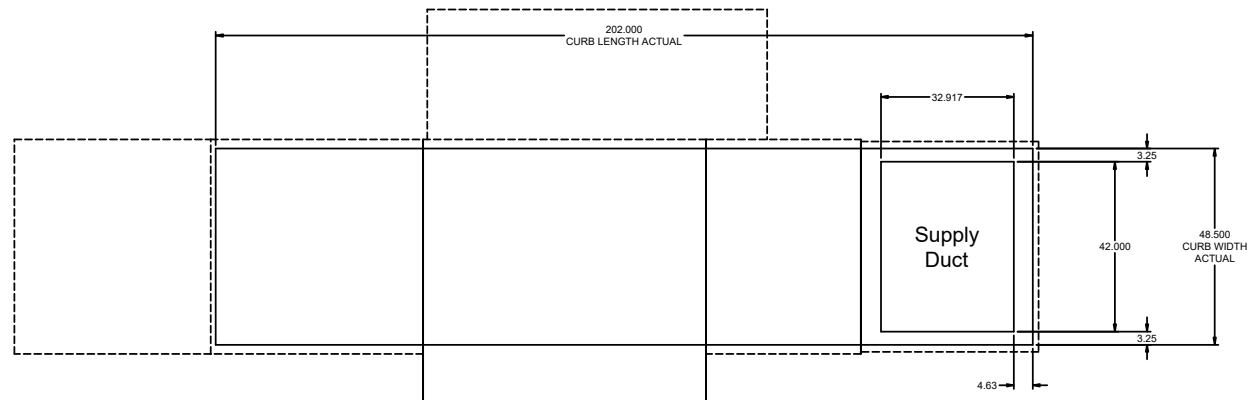
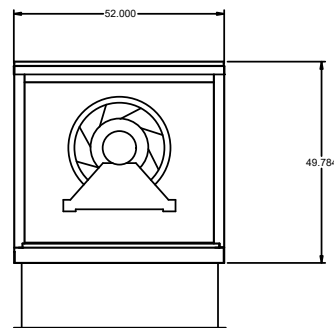
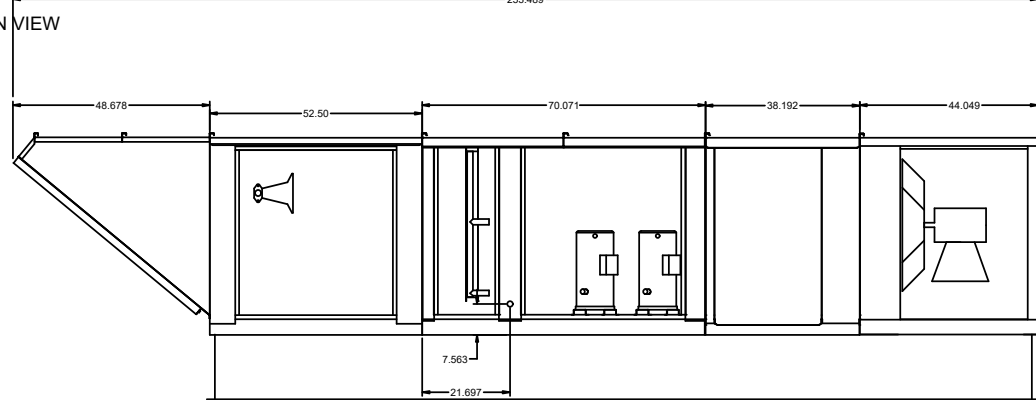
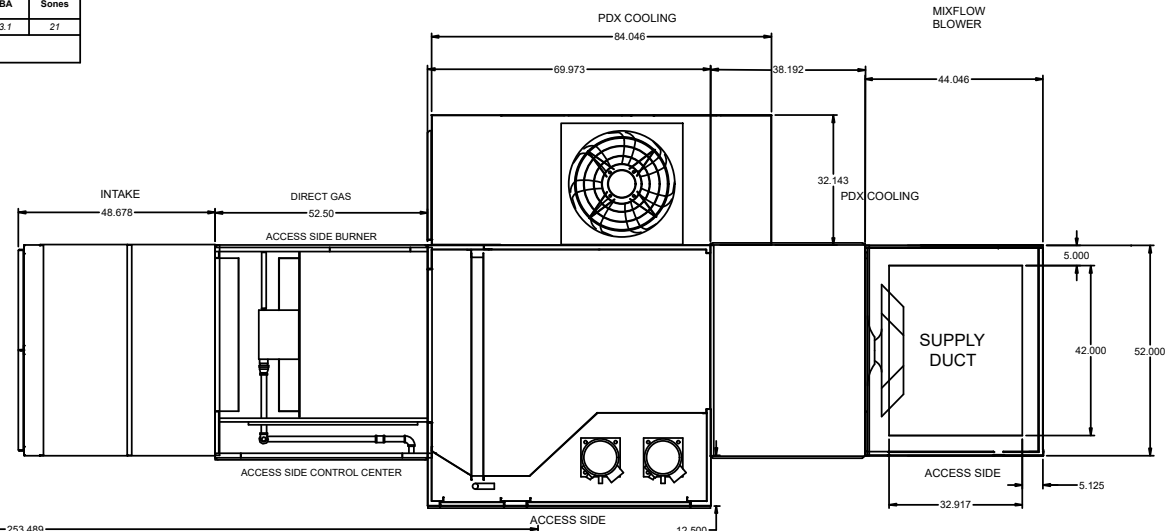


MARK  
EF-3

EQUIPMENT SCHEDULE									
Tempered Make-Up Air Unit									
Qty	Accurex Model	Volume	External SP	Total SP	MCA	MOP	Weight	SCCR	Mark: MAU-1
1	XDXG-P120-H32-MF-10	6,120 CFM	0.7 in. wg	1.762 in. wg	64.9	80	3,050 lb	5kA	
Motor Information									
Size	V/CP	Enclosure	Motor with Shaft Grounding	Motor RPM	Operating Power				
5 hp	208/60/3	ODP	No	1725	3.03 hp				
Heating									
Type	Gas Type	Temperature	Energy	Connection	Building	Control	Gas Pressure		
Direct Gas	Natural	Winter DB Max Δ, Max LAT	Input, Output, Efficiency	Gas (IN)	Access	Access	Min, Max		
		-6.9 F, 76.9 F, 70.0 F	552.5, 508.3, 92%	1"	1/2 PSI	Right Hand	9 in. wg, 0.5 PSI		
Cooling									
Cooling Type	Coil Model	Rows Deep	Fins Per Inch	Face Velocity	Total Energy	Sensible Energy	Entering Air (F)	Leaving Air (F)	
Packaged DX	DX38S02H10-36x54	2	10	453 ft/min	163.4 MBH	103.6 MBH	93.4 F	78.4 F	72.2 F
Coil SP	Refrigerant	Suction Temp	Liquid Temp	Super Heat	Code	Suction Conn Qty / Size	Liquid Conn Qty / Size		
NA	R-410a	54.0 F	110 F	8 F	0	NA	NA		
Outlet Sound Power By Octave Band									
dB	125	250	500	1000	2000	4000	8000	LwA	dBA
78.8	74.5	77.2	78.5	79.2	76.8	76.8	70.5	84.1	73.1

**OPTIONS AND ACCESSORIES**

Extended Compressor Warranty: 5 years  
 Air Flow Arrangement: Variable Volume  
 Weatherhood: Aluminum Mesh, 20x25x2 - (6)  
 Damper: Inlet  
 Outdoor Air Intake Position: End  
 Discharge Position: Bottom  
 Coating: Galvanized  
 Cooling Coil Coating: None  
 Insulation: Double Wall - Tempering On  
 Supply Fan Control: VFD  
 VFD Control: External 0-10 VDC  
 Access Side: Right-Hand  
 Unit Weight: 3050 lb  
 Control Center  
 Heat Inlet Air Sensor  
 Cool Inlet Air Sensor  
 Unit Controls: Terminal Strip  
 Temperature Control: Discharge  
 Direct Gas Options/Accessories  
 Approvals: ETL  
 FM Compliant

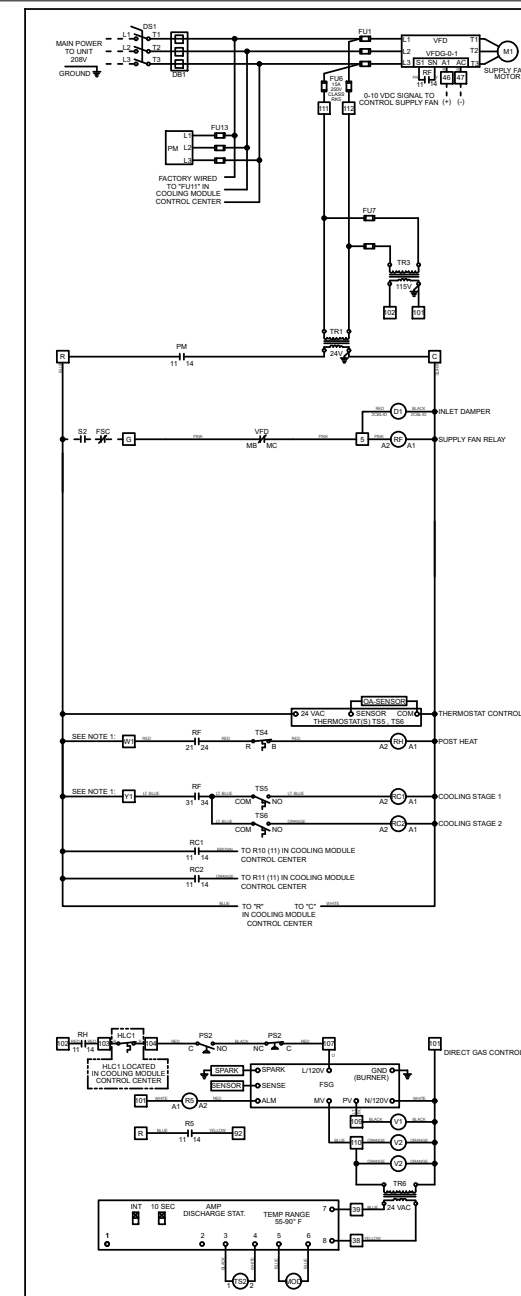


NOTE: Roof Opening Requirements:

Minimum Roof Opening: The minimum roof opening size is the illustrated duct diameter plus 0.25 in. on all sides.  
 For example: If the duct size is 14 x 14 in. square, the minimum roof opening size is 14.5 x 14.5 in. square.

Maximum Roof Opening: There must be a minimum perimeter of 1.75 in. between the roof opening and the roof curb.  
 For example: If the roof curb is 75 x 30 in. square, the maximum roof opening is 71.5 x 26.5 in. inches square.

NOTE: The weatherhood and filter sections of the make-up air unit are not supported by the curb.  
 This is by design, in order to help alleviate water infiltration issues.



**ACCUREX**

PROJECT: 10/20/2023  
 MARK: MAU-1

ACCUREX WI 1A - 1970  
 PHILLIP KRAFT  
 PHILLIP.KRAFT@ACCUREX.COM  
 (262)227-7865

**ACCUREX**

CONTROL INFORMATION

MARK	ELECTRICAL CONTROL PACKAGE		USER INTERFACE		FANS CONTROLLED											
	MODEL	LOCATION	TYPE	LOCATION	FAN #	TYPE	FAN	FAN MARK	ZONE	CFM	MOTOR HP	MOTOR VOLT	CYCLE	MOTOR PHASE	MOTOR STARTER IN PANEL	VFD IN PANEL
CTRLS-1	XKC-DCV-S-31-3-1-0	LEFT CABINET ON KH-1	FULL COLOR TOUCHSCREEN	CABINET - LEFT CABINET ON KH-1	1	EXHAUST	E1	EF-1	1	2000	1	208	60	1	NO	NO
					2	EXHAUST	E2	EF-2	1	2000	1	208	60	1	NO	NO
					3	EXHAUST	E3	EF-3	1	2800	2	208	48	3	NO	YES
					4	SUPPLY	S1	MAU-1	1	6120	5	208	60	3	NO	NO

**CONTROL FEATURES**  
 HOOD LIGHT CONTROL  
 TEMP SENSORS (FACTORY INSTALLED) - QTY. 3  
 DRY FIRE CONTACTS - QTY. 1  
 LIGHTS OFF DURING FIRE  
 EXHAUST MAX DURING FIRE  
 SUPPLY OFF DURING FIRE

**CABINET DETAILS**

DRAWING NOT TO SCALE

**USER INTERFACE DETAILS**

MOUNTING TYPE  
 FACTORY MOUNTED:  
 UTILITY CABINET - LEFT END OF HOOD

USER INTERFACE CONTROL  
 FANS AND LIGHTS

INTERFACE CABLE LENGTH  
 7FT (FACTORY PROVIDED)

MOUNTING LOCATION:  
 UTILITY CABINET ON HOOD  
 (INNER CONTROL BOX: 12 X 20 X 6)

**NOTES:**  
 1) WHEN CONTROLS ARE MOUNTED IN HOOD-MOUNTED OR WALL-MOUNTED UTILITY CABINET, FOR HOOD OR WALL CABINET DIMENSIONS SEE HOOD SUBMITTAL.  
 2) MINIMUM OF 36" OF CLEARANCE RECOMMENDED IN FRONT OF CONTROL CABINET

DOC NUMBER: --- REV: ---

**CAUTION**  
 UNIT MUST BE GROUNDED IN ACCORDANCE WITH N.E.C. POWER MUST BE OFF WHILE SERVICING.

**ATTENTION**  
 L'APPAREIL DOIT ÊTRE MIS À LA TERRE CONFORMÉMENT AU CODE C.E. L'ALIMENTATION DOIT ÊTRE COUPÉE DURANT L'ENTRETIEN.

COMMERCIAL APPLIANCE OUTLET CENTER  
 ELECTRICAL RATINGS: 110-240V, 1PHASE, 50-60HZ, 15A  
 BASE FILE #E200616, ML FILE #E313951

THESE DRAWINGS SHALL NOT BE REMOVED FROM THIS EQUIPMENT. USE COPPER CONDUCTORS RATED TO 90°C UNLESS SPECIFIED. TORQUE CONTROL & GROUND BLOCKS TO 8 LBS. IN. TORQUE POWER LUGS/SCREWS TO COMPONENT RATINGS LISTED. TORQUE CONTROL BOARD SCREW TERMINALS TO 3.5 LBS. IN. FIELD CONTROL WIRING RESISTANCE SHOULD NOT EXCEED 0.75 OHM. SEE IOM FOR ADDITIONAL INFORMATION, OR CALL FACTORY AT 1-800-371-8858.

NE PAS RETIRER CES DESSINS DE CET ÉQUIPEMENT SAUF INDICATION CONTRAIRE. UTILISER DES CONDUCTEURS EN CUIVRE CLASSÉS 90 °C. SERRER LES BORNES DE COMMANDE ET DE MISE À LA TERRE À 8 LB-PO. SERRER LES COSSÉS/VIS D'ALIMENTATION AUX COUPLES INDICUÉS POUR LE COMPOSANT. SERRER LES BORNES À VIS DE LA CARTE DE COMMANDE À 3.5 LB-PO. LA RÉSISTANCE DU CÂBLAGE DE COMMANDE LOCAL NE DOIT PAS DÉPASSER 0.75 OHM. POUR PLUS D'INFORMATION, CONSULTER LE MANUEL OU APPELER 1-800-371-8858.

WIRING DIAGRAM CODE: WDC# \_\_\_\_\_

JOB NAME: **GUADALAJARA WAUKEE**

MODEL: **XKC-DCV-S-31-3-1-0**

SERIAL NUMBER: **WDSN# \_\_\_\_\_**

MARK: **CTRLS-1**

**POWER WIRING FOR KITCHEN CONTROLS**  
(WIRING TO BE DONE BY ELECTRICIAN)

**POWER WIRING FROM BREAKER PANEL DIRECT TO FANS**  
(WIRING TO BE DONE BY ELECTRICIAN)

**CONTROL WIRING FOR KITCHEN CONTROLS**  
(WIRING TO BE DONE BY ELECTRICIAN, IF NO CONTROLS CONTRACTOR. USE 18-22GA WIRE UNLESS SPECIFIED.)

**MAIN CONTROL PANEL (CONTINUED)**

**MAIN CONTROL PANEL (CONTINUED)**

**MAIN CONTROL PANEL (CONTINUED)**

**MAIN CONTROL PANEL (CONTINUED)**

**MAIN CONTROL PANEL (CONTINUED)**

**MAIN CONTROL PANEL (CONTINUED)**

**MAIN CONTROL PANEL (CONTINUED)**

**MAIN CONTROL PANEL (CONTINUED)**

**MAIN CONTROL PANEL (CONTINUED)**

**MAIN CONTROL PANEL (CONTINUED)**

**MAIN CONTROL PANEL (CONTINUED)**

**MAIN CONTROL PANEL (CONTINUED)**

**MAIN CONTROL PANEL (CONTINUED)**

**MAIN CONTROL PANEL (CONTINUED)**

**MAIN CONTROL PANEL (CONTINUED)**

**MAIN CONTROL PANEL (CONTINUED)**

**MAIN CONTROL PANEL (CONTINUED)**

**MAIN CONTROL PANEL (CONTINUED)**

**MAIN CONTROL PANEL (CONTINUED)**

**MAIN CONTROL PANEL (CONTINUED)**

**MAIN CONTROL PANEL (CONTINUED)**

**MAIN CONTROL PANEL (CONTINUED)**

**MAIN CONTROL PANEL (CONTINUED)**

**MAIN CONTROL PANEL (CONTINUED)**

**MAIN CONTROL PANEL (CONTINUED)**

**MAIN CONTROL PANEL (CONTINUED)**

**MAIN CONTROL PANEL (CONTINUED)**

**MAIN CONTROL PANEL (CONTINUED)**

**MAIN CONTROL PANEL (CONTINUED)**

**MAIN CONTROL PANEL (CONTINUED)**

**MAIN CONTROL PANEL (CONTINUED)**

**MAIN CONTROL PANEL (CONTINUED)**

**MAIN CONTROL PANEL (CONTINUED)**

**MAIN CONTROL PANEL (CONTINUED)**

**MAIN CONTROL PANEL (CONTINUED)**

**MAIN CONTROL PANEL (CONTINUED)**

**MAIN CONTROL PANEL (CONTINUED)**

**MAIN CONTROL PANEL (CONTINUED)**

**MAIN CONTROL PANEL (CONTINUED)**

**MAIN CONTROL PANEL (CONTINUED)**

**MAIN CONTROL PANEL (CONTINUED)**

**MAIN CONTROL PANEL (CONTINUED)**

**MAIN CONTROL PANEL (CONTINUED)**

**MAIN CONTROL PANEL (CONTINUED)**

**MAIN CONTROL PANEL (CONTINUED)**

**MAIN CONTROL PANEL (CONTINUED)**

**MAIN CONTROL PANEL (CONTINUED)**

**MAIN CONTROL PANEL (CONTINUED)**

**MAIN CONTROL PANEL (CONTINUED)**

**MAIN CONTROL PANEL (CONTINUED)**

**MAIN CONTROL PANEL (CONTINUED)**

**MAIN CONTROL PANEL (CONTINUED)**

**MAIN CONTROL PANEL (CONTINUED)**

**MAIN CONTROL PANEL (CONTINUED)**

**MAIN CONTROL PANEL (CONTINUED)**

**MAIN CONTROL PANEL (CONTINUED)**

**MAIN CONTROL PANEL (CONTINUED)**

**MAIN CONTROL PANEL (CONTINUED)**

**MAIN CONTROL PANEL (CONTINUED)**

**MAIN CONTROL PANEL (CONTINUED)**

**MAIN CONTROL PANEL (CONTINUED)**

**MAIN CONTROL PANEL (CONTINUED)**

**MAIN CONTROL PANEL (CONTINUED)**

**MAIN CONTROL PANEL (CONTINUED)**

**MAIN CONTROL PANEL (CONTINUED)**

**MAIN CONTROL PANEL (CONTINUED)**

**MAIN CONTROL PANEL (CONTINUED)**

**MAIN CONTROL PANEL (CONTINUED)**

**MAIN CONTROL PANEL (CONTINUED)**

**MAIN CONTROL PANEL (CONTINUED)**

**MAIN CONTROL PANEL (CONTINUED)**

**MAIN CONTROL PANEL (CONTINUED)**

**MAIN CONTROL PANEL (CONTINUED)**

**MAIN CONTROL PANEL (CONTINUED)**

**MAIN CONTROL PANEL (CONTINUED)**

**MAIN CONTROL PANEL (CONTINUED)**

**MAIN CONTROL PANEL (CONTINUED)**

**MAIN CONTROL PANEL (CONTINUED)**

**MAIN CONTROL PANEL (CONTINUED)**

**MAIN CONTROL PANEL (CONTINUED)**

**MAIN CONTROL PANEL (CONTINUED)**

**MAIN CONTROL PANEL (CONTINUED)**

**MAIN CONTROL PANEL (CONTINUED)**

**MAIN CONTROL PANEL (CONTINUED)**

**MAIN CONTROL PANEL (CONTINUED)**

**MAIN CONTROL PANEL (CONTINUED)**

**MAIN CONTROL PANEL (CONTINUED)**

**MAIN CONTROL PANEL (CONTINUED)**

**MAIN CONTROL PANEL (CONTINUED)**

**MAIN CONTROL PANEL (CONTINUED)**

**MAIN CONTROL PANEL (CONTINUED)**

**MAIN CONTROL PANEL (CONTINUED)**

**MAIN CONTROL PANEL (CONTINUED)**

**MAIN CONTROL PANEL (CONTINUED)**

**MAIN CONTROL PANEL (CONTINUED)**

**MAIN CONTROL PANEL (CONTINUED)**

**MAIN CONTROL PANEL (CONTINUED)**

**MAIN CONTROL PANEL (CONTINUED)**

**MAIN CONTROL PANEL (CONTINUED)**

**MAIN CONTROL PANEL (CONTINUED)**

**MAIN CONTROL PANEL (CONTINUED)**

**MAIN CONTROL PANEL (CONTINUED)**

**MAIN CONTROL PANEL (CONTINUED)**

**MAIN CONTROL PANEL (CONTINUED)**

**MAIN CONTROL PANEL (CONTINUED)**

**MAIN CONTROL PANEL (CONTINUED)**

**MAIN CONTROL PANEL (CONTINUED)**

**MAIN CONTROL PANEL (CONTINUED)**

**MAIN CONTROL PANEL (CONTINUED)**

**MAIN CONTROL PANEL (CONTINUED)**

**MAIN CONTROL PANEL (CONTINUED)**

**MAIN CONTROL PANEL (CONTINUED)**

**MAIN CONTROL PANEL (CONTINUED)**

**MAIN CONTROL PANEL (CONTINUED)**

**MAIN CONTROL PANEL (CONTINUED)**

**MAIN CONTROL PANEL (CONTINUED)**

**MAIN CONTROL PANEL (CONTINUED)**

**MAIN CONTROL PANEL (CONTINUED)**

**MAIN CONTROL PANEL (CONTINUED)**

**MAIN CONTROL PANEL (CONTINUED)**

**MAIN CONTROL PANEL (CONTINUED)**

**MAIN CONTROL PANEL (CONTINUED)**

**MAIN CONTROL PANEL (CONTINUED)**

**MAIN CONTROL PANEL (CONTINUED)**

**MAIN CONTROL PANEL (CONTINUED)**

**MAIN CONTROL PANEL (CONTINUED)**

**MAIN CONTROL PANEL (CONTINUED)**

**MAIN CONTROL PANEL (CONTINUED)**

**MAIN CONTROL PANEL (CONTINUED)**

**MAIN CONTROL PANEL (CONTINUED)**

**MAIN CONTROL PANEL (CONTINUED)**

**MAIN CONTROL PANEL (CONTINUED)**

**MAIN CONTROL PANEL (CONTINUED)**

**MAIN CONTROL PANEL (CONTINUED)**

**MAIN CONTROL PANEL (CONTINUED)**

**MAIN CONTROL PANEL (CONTINUED)**

**MAIN CONTROL PANEL (CONTINUED)**

**MAIN CONTROL PANEL (CONTINUED)**

**MAIN CONTROL PANEL (CONTINUED)**

**MAIN CONTROL PANEL (CONTINUED)**

**MAIN CONTROL PANEL (CONTINUED)**

**MAIN CONTROL PANEL (CONTINUED)**

**MAIN CONTROL PANEL (CONTINUED)**

**MAIN CONTROL PANEL (CONTINUED)**

**MAIN CONTROL PANEL (CONTINUED)**

**MAIN CONTROL PANEL (CONTINUED)**

**MAIN CONTROL PANEL (CONTINUED)**

**MAIN CONTROL PANEL (CONTINUED)**

**MAIN CONTROL PANEL (CONTINUED)**

**MAIN CONTROL PANEL (CONTINUED)**

**MAIN CONTROL PANEL (CONTINUED)**

**MAIN CONTROL PANEL (CONTINUED)**

**MAIN CONTROL PANEL (CONTINUED)**

**MAIN CONTROL PANEL (CONTINUED)**

**MAIN CONTROL PANEL (CONTINUED)**

**MAIN CONTROL PANEL (CONTINUED)**

**MAIN CONTROL PANEL (CONTINUED)**

**MAIN CONTROL PANEL (CONTINUED)**

**FIRE SYSTEM INFORMATION**

MARK	MODEL	LOCATION	FLOW POINTS		SUPPLY LINE	DETECTION	MARK(S) PROTECTED BY FIRE SYSTEM
			HOODS	PCU			
FSS-1	ANSUL R-102 WET CHEMICAL	CABINET – RIGHT END OF KH-2	26 UTILIZED 33 AVAILABLE		CONTINUOUS	FUSIBLE LINK	KH-1 SECTION 1 KH-1 SECTION 2 KH-2 SECTION 1

**FIRE SYSTEM OPTIONS AND ACCESSORIES**

FULL INSTALLATION (INCLUDES PRE-PIPED HOOD(S) WITH DETECTION AND FACTORY COORDINATED INSTALL)  
 CHROME SLEEVES FOR FACTORY PROVIDED APPLIANCES DROPS - INCLUDED  
 METAL BLOW-OFF CAPS - INCLUDED  
 GAS VALVE - INCLUDED - MECHANICAL SHUTOFF VALVE, 2", (ANSUL) - PART# ANSULMECHSHUTOFFVALVE200  
 HOOD SUPPRESSION TANK - INCLUDED - 9 GAL. - [(3) 3.0 TANK(S)]  
 REMOTE PULL STATION - STANDARD - FIELD INSTALLATION AT SINGLE POINT OF EGRESS

**ANSUL R102 (WET CHEMICAL) FIRE PROTECTION SYSTEM - MODEL FSSC**

**CONTROL PANEL**

**NOT TO SCALE**

**NOTES:**

WET CHEMICAL FIRE PROTECTION SYSTEM TO BE ANSUL R-102, DESIGNED IN COMPLIANCE WITH UL 300 REQUIREMENTS.

- VERIFICATION OF ALL COOKING EQUIPMENT MAKE, MODEL AND LOCATION REQUIRED FOR ALL FIRE PROTECTION SYSTEMS.
- ALL FIRE SYSTEM PIPING IS STANDARDLY TO THE RIGHT END OF THE HOOD UNLESS A WALL IS LOCATED ON THE RIGHT END.
- ANSUL AUTOMAN RELEASE TO BE LOCATED WITHIN 60" OF HOOD.

THE BASIC FIRE SYSTEM WILL INCLUDE THE FOLLOWING:

- GAS SHUT-OFF VALVE, IF REQUIRED, TO BE SUPPLIED BY MANUFACTURER (UP TO 2" DIAMETER AS STANDARD), AND INSTALLED BY A LICENSED PLUMBER.
- MICRO SWITCH TO BE SUPPLIED BY MANUFACTURER FOR CONNECTION TO, BUT NOT LIMITED TO, BUILDING ALARM SYSTEM(S), EXHAUST AND SUPPLY FANS AND ELECTRICAL POWER SHUT DOWN. FIELD WIRING AND CONNECTIONS TO BE PERFORMED BY A LICENSED ELECTRICIAN.

THE BASIC FIRE SYSTEM DOES NOT INCLUDE THE FOLLOWING:

- FULL DUMP TEST OTHER THAN WHAT IS SPECIFIED PER THE INSTALLATION MANUAL, OR TO SATISFY A STATE OR LOCAL CODE. PERMIT AND TESTING FEES ARE NOT INCLUDED UNLESS NOTED UNDER THE EQUIPMENT SCHEDULE FOR THE FIRE SYSTEM.
- MORE THAN TWO TRIPS TO THE JOBSITE OR SPECIAL TRANSPORTATION, OR OVERNIGHT LODGING REQUIREMENTS IN REMOTE AREAS. NORMAL TRAVEL DISTANCE IS FIRST 50 MI. (80.5 KM) FROM OFFICE.
- SPECIAL CLASSES OR ADDITIONAL LABOR FOR ACCESS TO SECURITY SENSITIVE AREAS
- INSTALLATION OF GAS SHUT-OFF VALVE.
- SPECIAL DRAWINGS REQUIRED TO SATISFY STATE OR LOCAL CODE. PLAN EXAMINATION FEES, PE OR PS APPROVAL STAMP.
- UNION LABOR, GOVERNMENT LABOR, OR PREVAILING WAGES REQUIRED FOR FINAL FIELD HOOK-UP.
- ANY AND ALL ELECTRICAL COMPONENTS/CONNECTIONS REQUIRED TO SHUT DOWN FANS, SHUT OFF DEVICE FOR ELECTRIC COOKING EQUIPMENT (SHUNT TRIP BREAKER), OR ACTIVATE AN ALARM SYSTEM, ETC.
- ANY DISMANTLING OR REASSEMBLY REQUIRED TO GAIN ACCESS TO THE FIRE SUPPRESSION PIPING LOCATED ON THE TOP OF THE HOOD.
- ROUGH-IN HIDDEN CONDUIT FOR REMOTE PULL STATION OR GAS VALVE (FLUSH MOUNTED PULL STATION).
- INSTALLATION OF MORE THAN (1) REMOTE PULL STATIONS OR DISTANCES GREATER THAN 20 FT (6.1M).
- PARTS OR LABOR REQUIRED TO CORRECT PIPING DUE TO COOKING EQUIPMENT CHANGES OR DEVIATION FROM PLANS, OR ANY CHARGES FOR MISSING OR ADDITIONAL PARTS OTHER THAN THOSE INDICATED ON THE FIRE SUPPRESSION DETAIL.

**WIRING DIAGRAMS W/DPDT MICRO SWITCH**

DPDT SWITCHES PROVIDED BY MANUFACTURER MAY BE WIRED PER TYPICAL EXAMPLES SHOWN, VERIFY WITH LOCAL CODES AND EQUIPMENT SUPPLIED AS THE CONNECTION NEEDED FOR YOUR INSTALLATION.

**CONNECTION TO BUILDINGS ALARM**

**CONNECTION TO COOKING EQUIPMENT SHUT DOWN**

**CONNECTION TO FAN SHUT DOWN**

**NOTES:**

1. \_\_\_\_\_ DENOTES FIELD INSTALLATION.
2. \_\_\_\_\_ DENOTES FACTORY INSTALLATION.
3. DO NOT USE BLACK WIRE OR SNAP-ACTION SWITCH IN NORMAL INSTALLATION. BLACK WIRE TO BE USED ONLY FOR EXTRANEIOUS ALARM, LIGHT CIRCUITS, ETC.

PROJECT: 10/20/2023

MARK: FSS-1

ACCUREX WI IA - 1970  
 PHILLIP KRAFT  
 PHILLIP.KRAFT@ACCUREX.COM  
 (262)227-7865

GUADALAJARA WAUKEE