

**Report By:**

National TAB  
1329 E. KEMPER ROAD  
SUITE 4210  
CINCINNATI, OH 45246



**Report: Deficiency Report**  
**Function: Test, Adjust, & Balance**  
**Date: 02/12/2025**  
**Completed By: National TAB**

**PROJECT**  
**02-10-25 WAWA #5459 STARKE, FL**

103 EDWARDS RD

STARKE, FL 32091

**Client**

Wawa  
260 West Baltimore Pike

Wawa, PA 19063

## Issue List

- Diffuser 3-6 - No Damper
- Diffuser 3-7 - Low Flow
- EFs - Not Powered
- RTU 1 - Alarm 14
- RTU 2 Returns - No Dampers

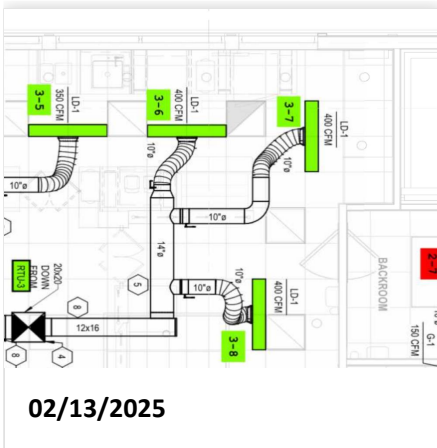


02-10-25 WAWA #5459 STARKE, FL

**Project Issue Information**

**Issue Name :** Diffuser 3-6 - No Damper  
**Description :** Damper is missing or could not be located for diffuser 3-6 (coffee/specialty beverage). Diffuser remains at 113% airflow. Recommend installing damper to allow for balancing.  
**Created By :** National TAB                      **Assigned To :** National TAB - Dan Hertenstein  
**Status :** Open  
**Priority :** Urgent                                      **Asset Tag :** SGRD6  
**Originated Date :** 02/13/2025 - Mark Johnson - National TAB

Project Issue File Details





**02-10-25 WAWA #5459 STARKE, FL**

**Project Issue Information**

**Issue Name :** Diffuser 3-7 - Low Flow  
**Description :** Diffuser 3-7 (coffee/specialty beverage) is currently at 80% design airflow. Not expected to cause comfort issues in the surrounding space.  
**Created By :** National TAB                      **Assigned To :** National TAB - Dan Hertenstein  
**Status :** Open  
**Priority :** High                                      **Asset Tag :** SGRD7  
**Originated Date :** 02/13/2025 - Mark Johnson - National TAB

Project Issue Response Details

- **02/13/2025    National TAB - Mark Johnson**
  - It is likely that the airflow can be balanced to design once the damper for diffuser 3-6 is installed. See issue for diffuser 3-6.



02-10-25 WAWA #5459 STARKE, FL

Project Issue Information

**Issue Name :** EFs - Not Powered  
**Description :** Exhaust fans are not yet powered. Must be running to allow for balancing.  
**Created By :** National TAB                      **Assigned To :** National TAB - Dan Hertenstein  
**Status :** Open  
**Priority :** Urgent                                      **Asset Tag :** EF1  
**Originated Date :** 02/12/2025 - Mark Johnson - National TAB

Project Issue File Details



02/12/2025



02/12/2025

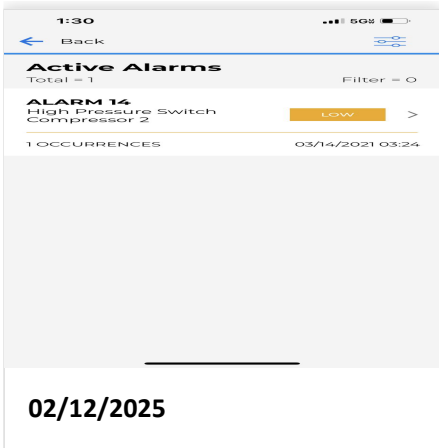


02-10-25 WAWA #5459 STARKE, FL

Project Issue Information

**Issue Name :** RTU 1 - Alarm 14  
**Description :** RTU 1 is displaying Alarm 14 - High Pressure Switch Compressor 2. Compressor 2 is locked out. Recommend servicing.  
**Created By :** National TAB                      **Assigned To :** National TAB - Dan Hertenstein  
**Status :** Open  
**Priority :** High                                      **Asset Tag :** RTU1  
**Originated Date :** 02/12/2025 - Mark Johnson - National TAB

Project Issue File Details





02-10-25 WAWA #5459 STARKE, FL

**Project Issue Information**

**Issue Name :** RTU 2 Returns - No Dampers  
**Description :** Dampers are not installed or could not be located for RTU 2 return diffusers. Recommend installing to allow for balancing.  
**Created By :** National TAB                      **Assigned To :** National TAB - Dan Hertenstein  
**Status :** Open  
**Priority :** High                                      **Asset Tag :** RTU2  
**Originated Date :** 02/12/2025 - Mark Johnson - National TAB

Project Issue File Details



02/12/2025



02/12/2025