

**1 FIRST FLOOR PLAN - HVAC**  
SCALE: 1/8" = 1'-0"

**GENERAL NOTES**

A. FIRE BARRIERS - OBC 717.5.2 EXCEPTION 3 / FIRE PARTITIONS - OBC 717.5.4 EXCEPTION 4

FIRE DAMPERS ARE NOT REQUIRED (UNLESS SHOWN ON FLOOR PLANS OR SCHEMATICS) AT PENETRATIONS OF FIRE BARRIERS WHERE SUCH WALLS ARE PENETRATED BY DUCTED HVAC SYSTEMS. HAVING A REQUIRED FIRE-RESISTANCE RATING OF 1 HOUR OR LESS IN AREAS OTHER THAN GROUP H AND ARE IN BUILDINGS EQUIPPED THROUGHOUT WITH AN AUTOMATIC SPRINKLER SYSTEM IN ACCORDANCE WITH SECTION 903.3.1.1 OR 903.1.2. HVAC SYSTEM SHALL BE CONSTRUCTED OF SHEET STEEL NOT LESS THAN 26 GAUGE. FLEXIBLE AIR CONNECTORS SHALL NOT BE PROHIBITED IN FULLY DUCTED SYSTEMS AT AIR HANDLING EQUIPMENT CONNECTIONS AND AT AIR CONNECTORS INSTALLATION TO CONNECT METAL DUCT TO A CEILING DIFFUSER AND IS LOCATED ENTIRELY WITHIN THE SAME ROOM AS THE CEILING DIFFUSER. THE FLEXIBLE AIR CONNECTOR SHALL NOT PASS THROUGH ANY WALLS, FLOORS, OR CEILINGS.

B. SHAFT ENCLOSURES - OBC 717.5.3 EXCEPTION 6

SMOKE DAMPERS ARE NOT REQUIRED (UNLESS SHOWN ON FLOOR PLANS OR SCHEMATICS) AT PENETRATIONS OF RATED SHAFT ENCLOSURES WHERE THE BUILDINGS EQUIPPED THROUGHOUT WITH AN AUTOMATIC SPRINKLER SYSTEM IN ACCORDANCE WITH SECTION 903.3.1.1.

**PLAN NOTES**

1. CONNECT #6 SUPPLY AIR DUCTWORK TO SOUND BOOTH. REFER TO MANUFACTURER'S CUTSHEETS. BALANCE TO CFM INDICATED.

2. ROUND DUCTWORK SERVING ROOM SHALL BE LOCATED BELOW BOTTOM OF SHAFT ENCLOSURE ABOVE CEILING AND SHALL NOT REQUIRE DAMPERS.

3. DIGITAL ROOM PRESSURE MONITOR ON WALL. THRU-THE-WALL ROOM PRESSURE SENSORS SHALL BE MOUNTED ABOVE THE DOOR. INSTALL PER MANUFACTURER'S RECOMMENDATIONS. ROOM PRESSURE MONITOR SHALL BE PROVIDED BY ATC AND PROGRAMMED TO ALARM IF THE ISOLATION ROOM DROPS BELOW 0.01" NEGATIVE PRESSURE WITH RESPECT TO CORRIDOR.

4. DROP COOLING CONDENSATE DRAIN TO BELOW SINK. COORDINATE TIE-IN TO SANITARY WITH PLUMBING CONTRACTOR. PROVIDE AIR GAP AT CONNECTION.



4 South Main Street, Suite 1300  
Dayton, OH 45402  
T 937.224.4474  
thinkchamplin.com

THINK CREATE REALIZE



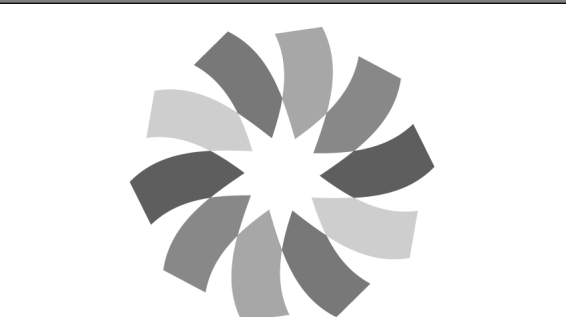
865 Yard Street  
Columbus, OH 43214  
cannondesign.com



2202 S. Patterson Blvd.  
Dayton, OH 45409  
Tel: 937.298.4631 Fax: 937.298.5732



570 Congress Park Dr • Dayton, OH 45404 • P. 937.438.8000 F. 937.438.5645



**DANIS**  
3323 Newmark Drive  
Miamisburg, OH 45342  
Tel: 937.228.1225 Fax: 937.228.7443

**ISSUANCES**

No.	Description	Date
1	FIT-OUT - LEVELS 1 AND 2	2021.09.03
2	BULLETIN #030	2021.09.24

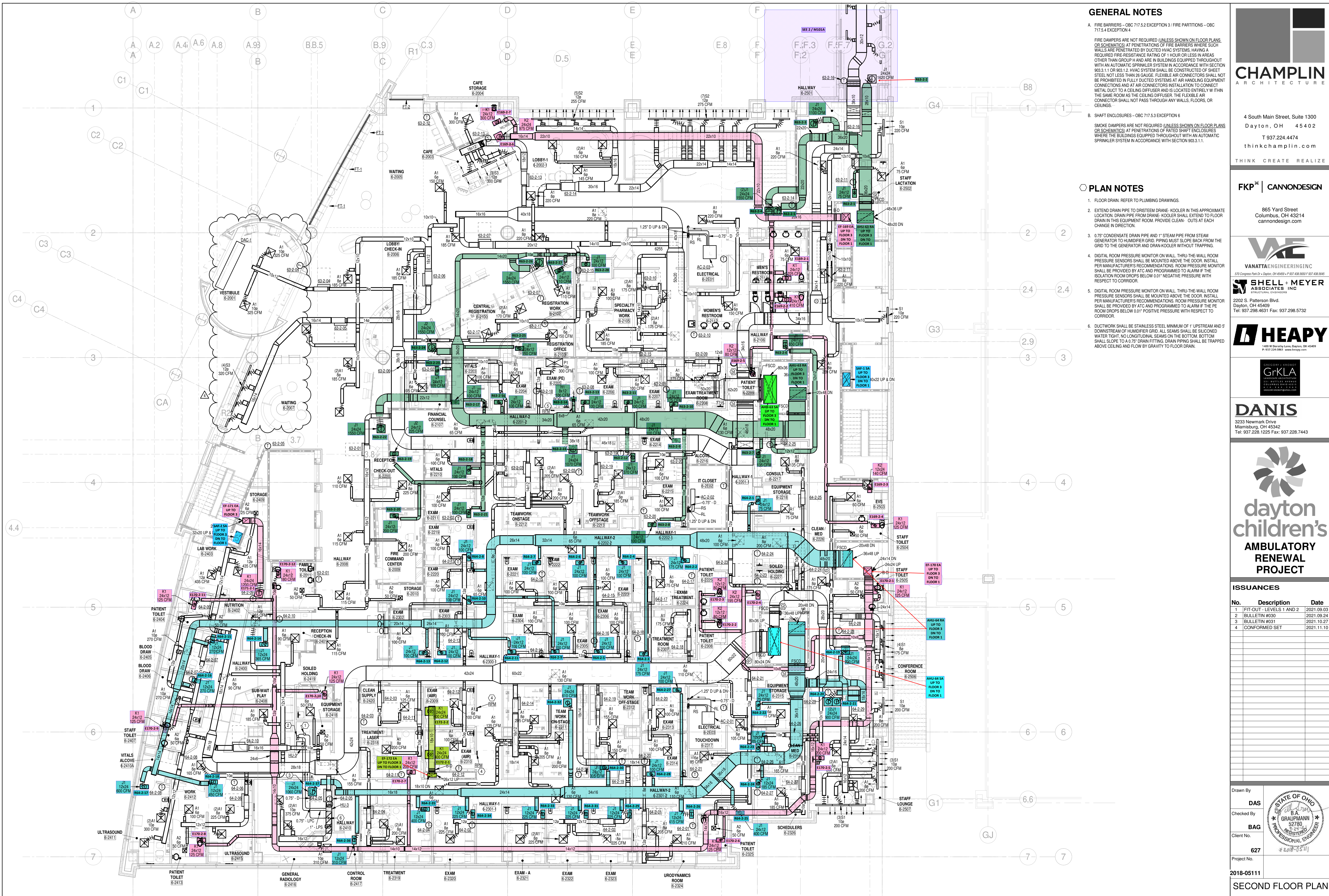
Drawn By: DAS  
Checked By: BAG  
Client No.: 627  
Project No.: 2018-05111

FIRST FLOOR PLAN

M101

11/10/2021 10:47:00 AM





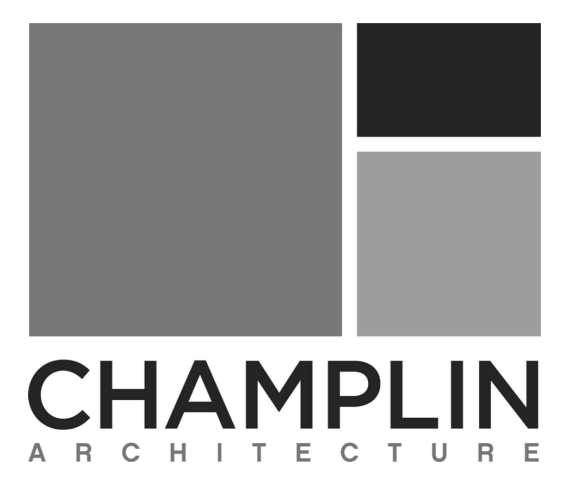
**GENERAL NOTES**

- A. FIRE BARRIERS - OBC 717.5.2 EXCEPTION 3 / FIRE PARTITIONS - OBC 717.5.4 EXCEPTION 4  
 FIRE DAMPERS ARE NOT REQUIRED (UNLESS SHOWN ON FLOOR PLANS OR SCHEMATICS) AT PENETRATIONS OF FIRE BARRIERS WHERE SUCH WALLS ARE PENETRATED BY DUCTED HVAC SYSTEMS. HAVING A REQUIRED FIRE-RESISTANCE RATING OF 1 HOUR OR LESS IN AREAS OTHER THAN GROUP H AND ARE IN BUILDINGS EQUIPPED THROUGHOUT WITH AN AUTOMATIC SPRINKLER SYSTEM IN ACCORDANCE WITH SECTION 903.3.1.1 OR 903.1.2. HVAC SYSTEM SHALL BE CONSTRUCTED OF SHEET STEEL, NOT LESS THAN 26 GAUGE. FLEXIBLE AIR CONNECTORS SHALL NOT BE PROHIBITED IN FULLY DUCTED SYSTEMS AT AIR HANDLING EQUIPMENT CONNECTIONS AND AT AIR CONNECTORS INSTALLATION TO CONNECT METAL DUCT TO A CEILING DIFFUSER AND IS LOCATED ENTIRELY WITHIN THE SAME ROOM AS THE CEILING DIFFUSER. THE FLEXIBLE AIR CONNECTOR SHALL NOT PASS THROUGH ANY WALLS, FLOORS, OR CEILINGS.
- B. SHAFT ENCLOSURES - OBC 717.5.3 EXCEPTION 6  
 SMOKE DAMPERS ARE NOT REQUIRED (UNLESS SHOWN ON FLOOR PLANS OR SCHEMATICS) AT PENETRATIONS OF RATED SHAFT ENCLOSURES WHERE THE BUILDINGS EQUIPPED THROUGHOUT WITH AN AUTOMATIC SPRINKLER SYSTEM IN ACCORDANCE WITH SECTION 903.3.1.1.

**PLAN NOTES**

- 1. FLOOR DRAIN REFER TO PLUMBING DRAWINGS.
- 2. EXTEND DRAIN PIPE TO DRISTEM DRAIN. COOLER IN THIS APPROXIMATE LOCATION. DRAIN PIPE FROM DRAIN. COOLER SHALL EXTEND TO FLOOR DRAIN IN THIS EQUIPMENT ROOM. PROVIDE CLEAN-OUTS AT EACH CHANGE IN DIRECTION.
- 3. 0.75" CONDENSATE DRAIN PIPE AND 1" STEAM PIPE FROM STEAM GENERATOR TO HUMIDIFIER GRID. PIPING MUST SLOPE BACK FROM THE GRID TO THE GENERATOR AND DRAIN COOLER WITHOUT TRAPPING.
- 4. DIGITAL ROOM PRESSURE MONITOR ON WALL, THRU-THE-WALL ROOM PRESSURE SENSORS SHALL BE MOUNTED ABOVE THE DOOR. INSTALL PER MANUFACTURER'S RECOMMENDATIONS. ROOM PRESSURE MONITOR SHALL BE PROVIDED BY ATC AND PROGRAMMED TO ALARM IF THE ROOM DROPS BELOW 0.01" POSITIVE PRESSURE WITH RESPECT TO CORRIDOR.
- 5. DIGITAL ROOM PRESSURE MONITOR ON WALL, THRU-THE-WALL ROOM PRESSURE SENSORS SHALL BE MOUNTED ABOVE THE DOOR. INSTALL PER MANUFACTURER'S RECOMMENDATIONS. ROOM PRESSURE MONITOR SHALL BE PROVIDED BY ATC AND PROGRAMMED TO ALARM IF THE ROOM DROPS BELOW 0.01" POSITIVE PRESSURE WITH RESPECT TO CORRIDOR.
- 6. DUCTWORK SHALL BE STAINLESS STEEL MINIMUM OF 1" UPSTREAM AND 5" DOWNSTREAM OF HUMIDIFIER GRID. ALL SEAMS SHALL BE SPLICED WATER TIGHT. NO LONGITUDINAL SEAMS ON THE BOTTOM. BOTTOM SHALL SLOPE TO A 0.75" DRAIN FITTING. DRAIN PIPING SHALL BE TRAPPED ABOVE CEILING AND FLOW BY GRAVITY TO FLOOR DRAIN.

**1 SECOND FLOOR PLAN - HVAC**  
 SCALE: 1/8" = 1'-0"



4 South Main Street, Suite 1300  
 Dayton, OH 45402  
 T 937.224.4474  
 thinkchamplin.com

THINK CREATE REALIZE



865 Yard Street  
 Columbus, OH 43214  
 cannondesign.com



570 Congress Park Dr - Dayton, OH 45404 - P: 937.481.8600 F: 937.438.5645  
**SHELL & MEYER ASSOCIATES INC**  
 2202 S. Patterson Blvd.  
 Dayton, OH 45409  
 Tel: 937.298.4631 Fax: 937.298.5732



**DANIS**  
 3233 Newmark Drive  
 Marietta, OH 45342  
 Tel: 937.228.1225 Fax: 937.228.7443



**ISSUANCES**

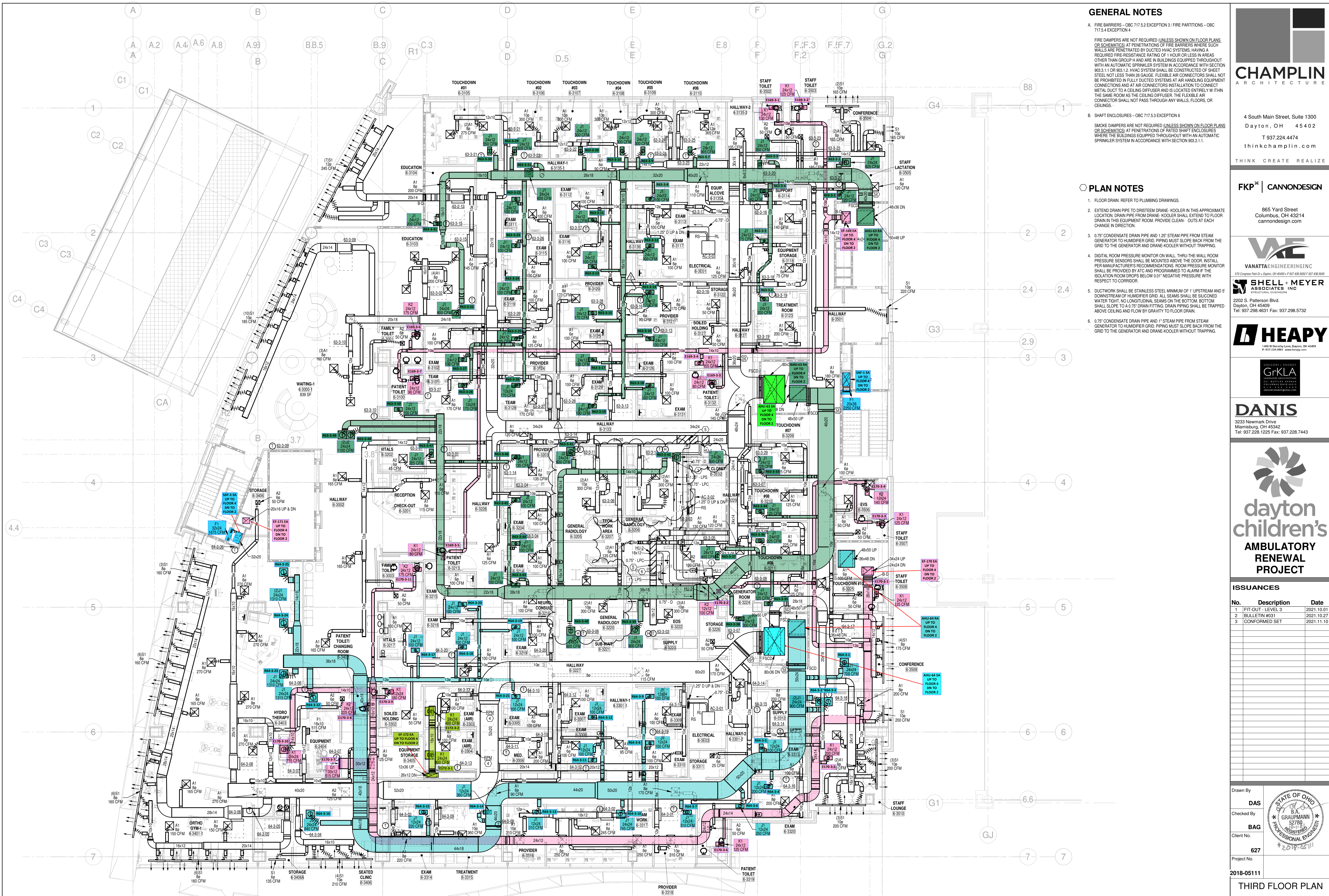
No.	Description	Date
1	FIT-OUT - LEVELS 1 AND 2	2021.09.03
2	BULLETIN #030	2021.09.24
3	BULLETIN #031	2021.10.27
4	CONFORMED SET	2021.11.10

Drawn By: **DAS**  
 Checked By: **BAG**  
 Client No.: **627**  
 Project No.: **2018-05111**

**SECOND FLOOR PLAN**

**M102**

11/10/2021 10:47:12 AM



**GENERAL NOTES**

A. FIRE BARRIERS - OBC 717.5.2 EXCEPTION 3 / FIRE PARTITIONS - OBC 717.5.4 EXCEPTION 4

FIRE DAMPERS ARE NOT REQUIRED (UNLESS SHOWN ON FLOOR PLANS OR SCHEMATICS) AT PENETRATIONS OF FIRE BARRIERS WHERE SUCH WALLS ARE PENETRATED BY DUCTED HVAC SYSTEMS, HAVING A REQUIRED FIRE-RESISTANCE RATING OF 1 HOUR OR LESS IN AREAS OTHER THAN GROUP H AND ARE IN BUILDINGS EQUIPPED THROUGHOUT WITH AN AUTOMATIC SPRINKLER SYSTEM IN ACCORDANCE WITH SECTION 903.3.1.1 OR 903.1.2. HVAC SYSTEM SHALL BE CONSTRUCTED OF SHEET STEEL, NOT LESS THAN 26 GAUGE, FLEXIBLE AIR CONNECTORS SHALL NOT BE PROHIBITED IN FULLY DUCTED SYSTEMS AT AIR HANDLING EQUIPMENT CONNECTIONS AND AT AIR CONNECTOR INSTALLATION TO CONNECT METAL DUCT TO A CEILING DIFFUSER AND IS LOCATED ENTIRELY WITHIN THE SAME ROOM AS THE CEILING DIFFUSER. THE FLEXIBLE AIR CONNECTOR SHALL NOT PASS THROUGH ANY WALLS, FLOORS, OR CEILINGS.

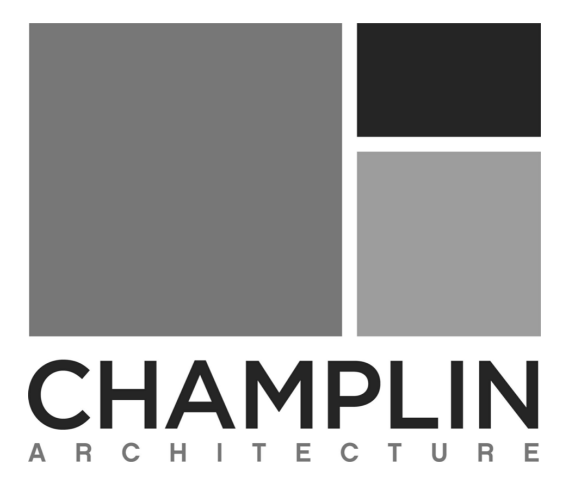
B. SHAFT ENCLOSURES - OBC 717.5.3 EXCEPTION 6

SMOKE DAMPERS ARE NOT REQUIRED (UNLESS SHOWN ON FLOOR PLANS OR SCHEMATICS) AT PENETRATIONS OF RATED SHAFT ENCLOSURES WHERE THE BUILDINGS EQUIPPED THROUGHOUT WITH AN AUTOMATIC SPRINKLER SYSTEM IN ACCORDANCE WITH SECTION 903.3.1.1.

**PLAN NOTES**

- FLOOR DRAIN REFER TO PLUMBING DRAWINGS.
- EXTEND DRAIN PIPE TO DRISTEM DRAIN, COOLER IN THIS APPROXIMATE LOCATION. DRAIN PIPE FROM DRAIN, COOLER SHALL EXTEND TO FLOOR DRAIN IN THIS EQUIPMENT ROOM. PROVIDE CLEAN-OUTS AT EACH CHANGE IN DIRECTION.
- 0.75" CONDENSATE DRAIN PIPE AND 1.25" STEAM PIPE FROM STEAM GENERATOR TO HUMIDIFIER GRID. PIPING MUST SLOPE BACK FROM THE GRID TO THE GENERATOR AND DRAIN-KOOLER WITHOUT TRAPPING.
- DIGITAL ROOM PRESSURE MONITOR ON WALL, THRU-THE-WALL ROOM PRESSURE SENSORS SHALL BE MOUNTED ABOVE THE DOOR. INSTALL PER MANUFACTURER'S RECOMMENDATIONS. ROOM PRESSURE MONITOR SHALL BE PROVIDED BY ATC AND PROGRAMMED TO ALARM IF THE ISOLATION ROOM DROPS BELOW 0.01" NEGATIVE PRESSURE WITH RESPECT TO CORRIDOR.
- DUCTWORK SHALL BE STAINLESS STEEL, MINIMUM OF 1" UPSTREAM AND 6" DOWNSTREAM OF HUMIDIFIER GRID. ALL SEAMS SHALL BE SILICONED WATER TIGHT. NO LONGITUDINAL SEAMS ON THE BOTTOM. BOTTOM SHALL SLOPE TO 0.75" DRAIN FITTING. DRAIN PIPING SHALL BE TRAPPED ABOVE CEILING AND FLOW BY GRAVITY TO FLOOR DRAIN.
- 0.75" CONDENSATE DRAIN PIPE AND 1" STEAM PIPE FROM STEAM GENERATOR TO HUMIDIFIER GRID. PIPING MUST SLOPE BACK FROM THE GRID TO THE GENERATOR AND DRAIN-KOOLER WITHOUT TRAPPING.

**1 THIRD FLOOR PLAN - HVAC**  
SCALE: 1/8" = 1'-0"



4 South Main Street, Suite 1300  
Dayton, OH 45402  
T 937.224.4474  
thinkchamplin.com

THINK CREATE REALIZE



865 Yard Street  
Columbus, OH 43214  
cannondesign.com



2202 S. Patterson Blvd.  
Dayton, OH 45409  
Tel: 937.298.4631 Fax: 937.298.5732



**DANIS**  
3233 Newmark Drive  
Mansfield, OH 45342  
Tel: 937.228.1225 Fax: 937.228.7443



**ISSUANCES**

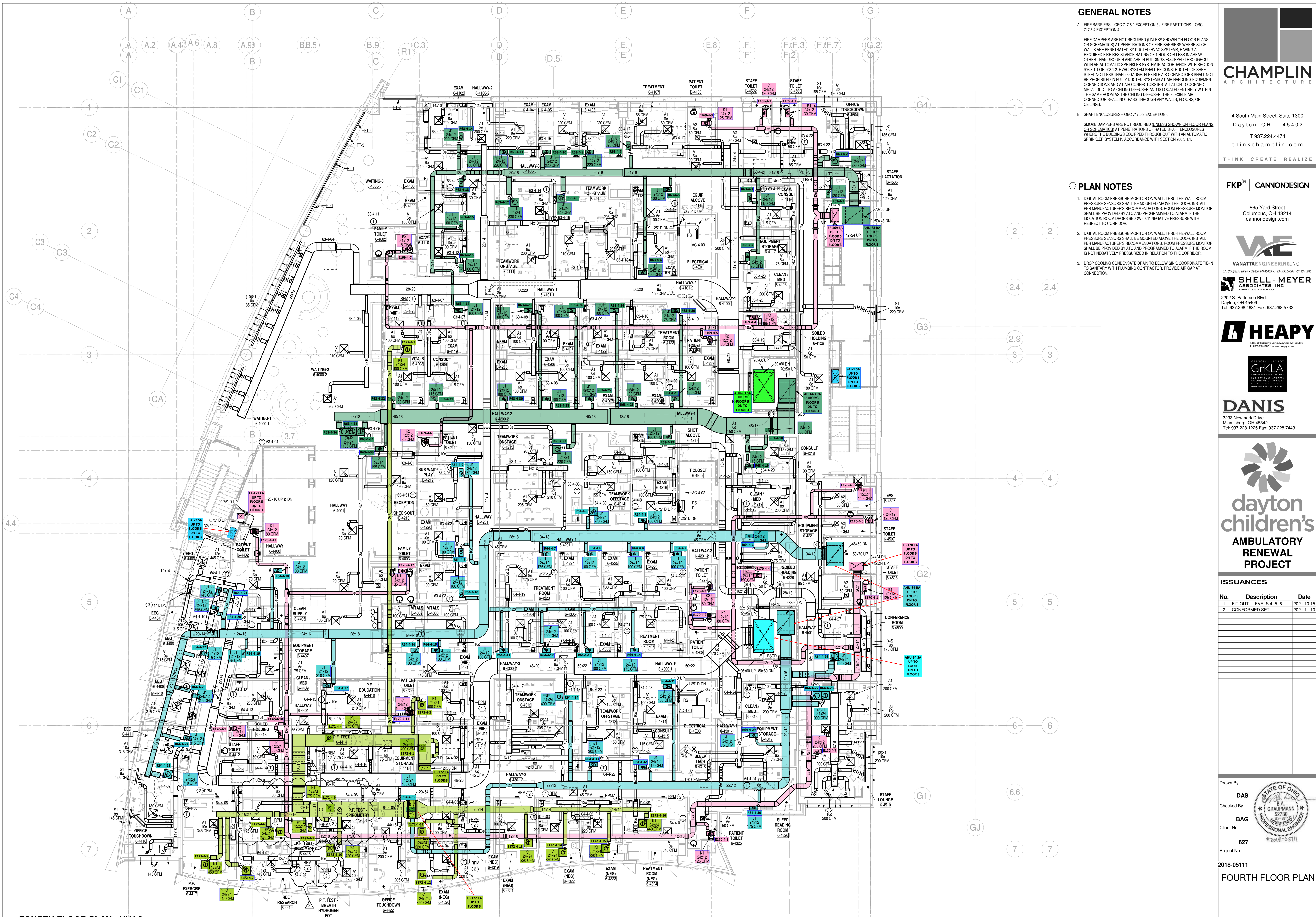
No.	Description	Date
1	FIT-OUT - LEVEL 3	2021.10.01
2	BULLETIN #031	2021.10.27
3	CONFORMED SET	2021.11.10

Drawn By: DAS  
Checked By: BAG  
Client No.: 627  
Project No.: 2018-05111

**THIRD FLOOR PLAN**

**M103**

11/10/2021 10:47:25 AM



**GENERAL NOTES**

A. FIRE BARRIERS - OBC 717.5.2 EXCEPTION 3 / FIRE PARTITIONS - OBC 717.5.4 EXCEPTION 4

FIRE DAMPERS ARE NOT REQUIRED (UNLESS SHOWN ON FLOOR PLANS OR SCHEMATICS) AT PENETRATIONS OF FIRE BARRIERS WHERE SUCH WALLS ARE PENETRATED BY DUCTED HVAC SYSTEMS, HAVING A REQUIRED FIRE-RESISTANCE RATING OF 1 HOUR OR LESS IN AREAS OTHER THAN GROUP H AND ARE IN BUILDINGS EQUIPPED THROUGHOUT WITH AN AUTOMATIC SPRINKLER SYSTEM IN ACCORDANCE WITH SECTION 903.3.1.1 OR 903.1.2. HVAC SYSTEM SHALL BE CONSTRUCTED OF SHEET STEEL NOT LESS THAN 26 GAUGE. FLEXIBLE AIR CONNECTORS SHALL NOT BE INSTALLED IN FULLY DUCTED SYSTEMS AT AIR HANDLING EQUIPMENT CONNECTIONS AND AT AIR CONNECTORS INSTALLATION TO CONNECT METAL DUCT TO A CEILING DIFFUSER AND IS LOCATED ENTIRELY WITHIN THE SAME ROOM AS THE CEILING DIFFUSER. THE FLEXIBLE AIR CONNECTOR SHALL NOT PASS THROUGH ANY WALLS, FLOORS, OR CEILINGS.

B. SHAFT ENCLOSURES - OBC 717.5.3 EXCEPTION 6

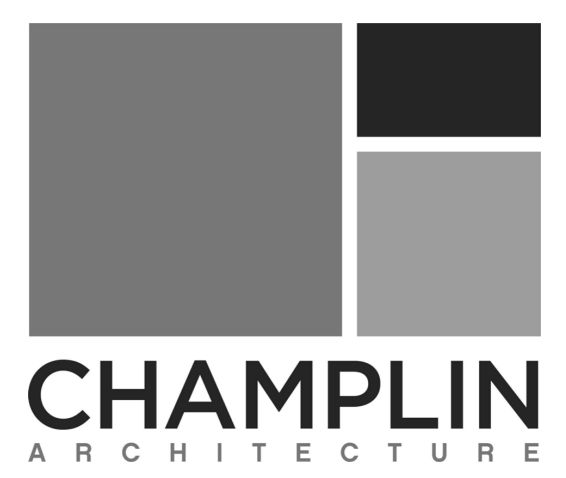
SMOKE DAMPERS ARE NOT REQUIRED (UNLESS SHOWN ON FLOOR PLANS OR SCHEMATICS) AT PENETRATIONS OF RATED SHAFT ENCLOSURES WHERE THE BUILDINGS EQUIPPED THROUGHOUT WITH AN AUTOMATIC SPRINKLER SYSTEM IN ACCORDANCE WITH SECTION 903.3.1.1.

**PLAN NOTES**

1. DIGITAL ROOM PRESSURE MONITOR ON WALL, THRU-THE-WALL ROOM PRESSURE SENSORS SHALL BE MOUNTED ABOVE THE DOOR. INSTALL PER MANUFACTURER'S RECOMMENDATIONS. ROOM PRESSURE MONITOR SHALL BE PROVIDED BY ATC AND PROGRAMMED TO ALARM IF THE ISOLATION ROOM DROPS BELOW 0.01" NEGATIVE PRESSURE WITH RESPECT TO CORRIDOR.

2. DIGITAL ROOM PRESSURE MONITOR ON WALL, THRU-THE-WALL ROOM PRESSURE SENSORS SHALL BE MOUNTED ABOVE THE DOOR. INSTALL PER MANUFACTURER'S RECOMMENDATIONS. ROOM PRESSURE MONITOR SHALL BE PROVIDED BY ATC AND PROGRAMMED TO ALARM IF THE ROOM IS NOT NEGATIVELY PRESSURIZED IN RELATION TO THE CORRIDOR.

3. DROP COOLING CONDENSATE DRAIN TO BELOW SINK. COORDINATE THE DRAIN TO SANITARY WITH PLUMBING CONTRACTOR. PROVIDE AIR GAP AT CONNECTION.

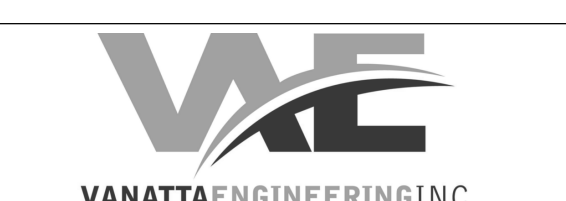


4 South Main Street, Suite 1300  
Dayton, OH 45402  
T 937.224.4474  
thinkchamplin.com

THINK CREATE REALIZE



865 Yard Street  
Columbus, OH 43214  
cannondesign.com



570 Congress Park Dr - Dayton, OH 45409 - P: 937.438.8000 F: 937.438.8645



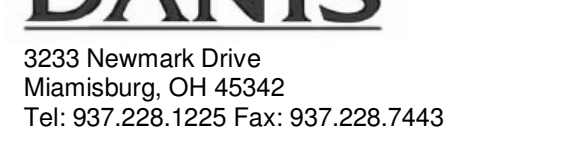
2202 S. Patterson Blvd.  
Dayton, OH 45409  
Tel: 937.298.4631 Fax: 937.298.5732



10000 Northpark Drive, Dayton, OH 45424  
P: 937.234.0862 www.heapy.com



3233 Newmark Drive  
Mansfield, OH 45342  
Tel: 937.228.1225 Fax: 937.228.7443



3233 Newmark Drive  
Mansfield, OH 45342  
Tel: 937.228.1225 Fax: 937.228.7443



**AMBULATORY RENEWAL PROJECT**

**ISSUANCES**

No.	Description	Date
1	FIT-OUT - LEVELS 4, 5, 6	2021.10.15
2	CONFORMED SET	2021.11.10

Drawn By: DAS  
Checked By: BAG  
Client No.: 627  
Project No.: 2018-05111

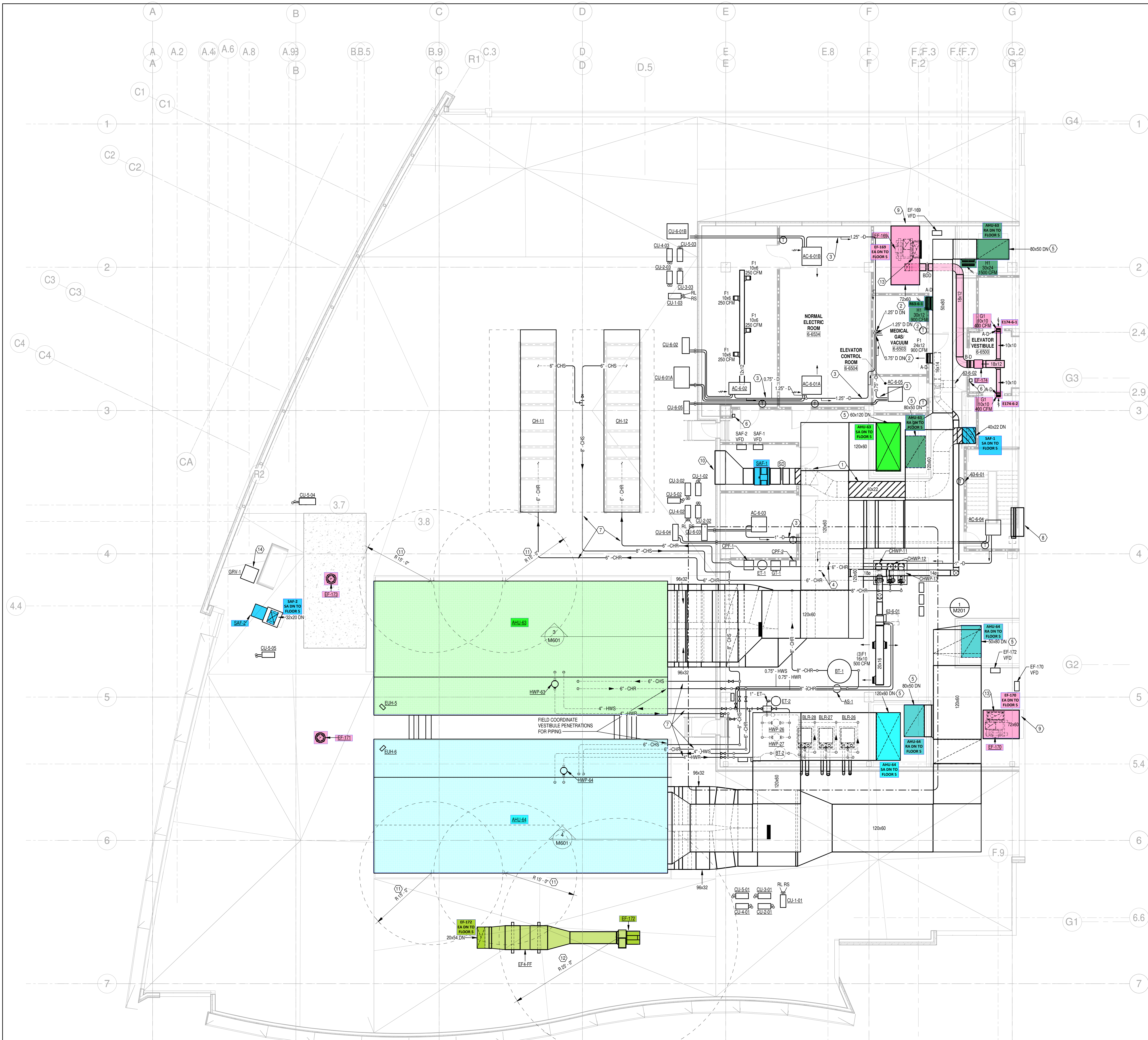
**FOURTH FLOOR PLAN**

**M104**

**FOURTH FLOOR PLAN - HVAC**  
SCALE: 1/8" = 1'-0"

11/10/2021 10:47:35 AM





**GENERAL NOTES**

A. FIRE BARRIERS - OBC 717.5.2 EXCEPTION 3 / FIRE PARTITIONS - OBC 717.5.4 EXCEPTION 4

FIRE DAMPERS ARE NOT REQUIRED (UNLESS SHOWN ON FLOOR PLANS OR SCHEMATICS) AT PENETRATIONS OF FIRE BARRIERS WHERE SUCH WALLS ARE PENETRATED BY DUCTED HVAC SYSTEMS, HAVING A REQUIRED FIRE-RESISTANCE RATING OF 1 HOUR OR LESS IN AREAS OTHER THAN GROUP H AND ARE IN BUILDINGS EQUIPPED THROUGHOUT WITH AN AUTOMATIC SPRINKLER SYSTEM IN ACCORDANCE WITH SECTION 903.3.1.1 OR 903.3.2. HVAC SYSTEM SHALL BE CONSTRUCTED OF SHEET STEEL NOT LESS THAN 26 GAUGE. FLEXIBLE AIR CONNECTORS SHALL NOT BE PROHIBITED IN FULLY DUCTED SYSTEMS AT AIR HANDLING EQUIPMENT CONNECTIONS AND AT AIR CONNECTORS INSTALLATION TO CONNECT METAL DUCT TO A CEILING DIFFUSER AND IS LOCATED ENTIRELY WITHIN THE SAME ROOM AS THE CEILING DIFFUSER. THE FLEXIBLE AIR CONNECTOR SHALL NOT PASS THROUGH ANY WALLS, FLOORS, OR CEILINGS.

B. SHAFT ENCLOSURES - OBC 717.5.3 EXCEPTION 6

SMOKE DAMPERS ARE NOT REQUIRED (UNLESS SHOWN ON FLOOR PLANS OR SCHEMATICS) AT PENETRATIONS OF RATED SHAFT ENCLOSURES WHERE THE BUILDINGS EQUIPPED THROUGHOUT WITH AN AUTOMATIC SPRINKLER SYSTEM IN ACCORDANCE WITH SECTION 903.3.1.1.

**PLAN NOTES**

- STAIR PRESSURIZATION DUCTWORK SHALL BE 2-HOUR FIRE WRAPPED FROM FAN ROOM TO SHAFT PENETRATION.
- EXTEND COOLING CONDENSATE TO FLOOR DRAIN IN MEDICAL VAC ROOM.
- ROUTE PIPING TO AVOID BEING OVERTOP OF ELECTRICAL EQUIPMENT. WHERE PIPING PASSES OVER ELECTRICAL EQUIPMENT, PROVIDE SECONDARY DRAIN PAN UNDERNEATH PIPING.
- EXTEND COOLING CONDENSATE TO NEARBY FLOOR DRAIN.
- PROVIDE TYPE-B FIRE DAMPER AT FLOOR PENETRATION. ACCESS TO DAMPER SHALL BE FROM THE PENTHOUSE. COORDINATE APPROPRIATE ACCESS.
- BOILERS' EMERGENCY SHUT-OFF WITH SIGNAGE.
- ALL EXTERIOR PIPING SHALL BE HEAT TRACED PER THE SPECIFICATIONS.
- 6" X 5" RELIEF LOUVER BY GC. PROVIDE RELIEF DAMPER FOR STARWELL PRESSURIZATION. REFER TO CONTROLS.
- 6" X 5" EXHAUST LOUVER BY GC. PROVIDE INSULATED EXHAUST PLENUM FULL SIZE OF LOUVER.
- 7" - 4" X 4" INTAKE LOUVER BY GC. INSULATE STAIR PRESSURIZATION DUCTWORK THAT IS NOT FIRE WRAPPED.
- MAINTAIN MINIMUM 15'-0" CLEARANCE FROM OUTSIDE AIR INTAKES TO ALL EXHAUST AIR OUTLETS AND PLUMBING VENTS.
- MAINTAIN MINIMUM 25'-0" CLEARANCE FROM DISCHARGE OF ISOLATION EXHAUST TO OUTSIDE AIR INTAKES.
- EXHAUST DUCTWORK FROM FLOOR BELOW INTO FAN INLET PLENUM. PROVIDE FIRE DAMPER AT FLOOR PENETRATION. ACCESS TO FIRE DAMPER SHALL BE FROM ACCESS DOOR ON INLET PLENUM. INSTALL BACKDRAFT DAMPER FOR FAN ON DISCHARGE OF FAN. DUCTWORK SHALL BE INSULATED DOWNSTREAM OF FAN UP TO PLENUM.
- RELIEF AIR GRV FOR STAIRWELL. EXTEND DUCTWORK DOWN THRU ROOF FULL SIZE OF GRV CONNECTION. PROVIDE STARWELL RELIEF DAMPER IN DUCTWORK BELOW ROOF. REFER TO CONTROLS.

**1 ROOF PLAN - HVAC**  
SCALE: 1/8" = 1'-0"

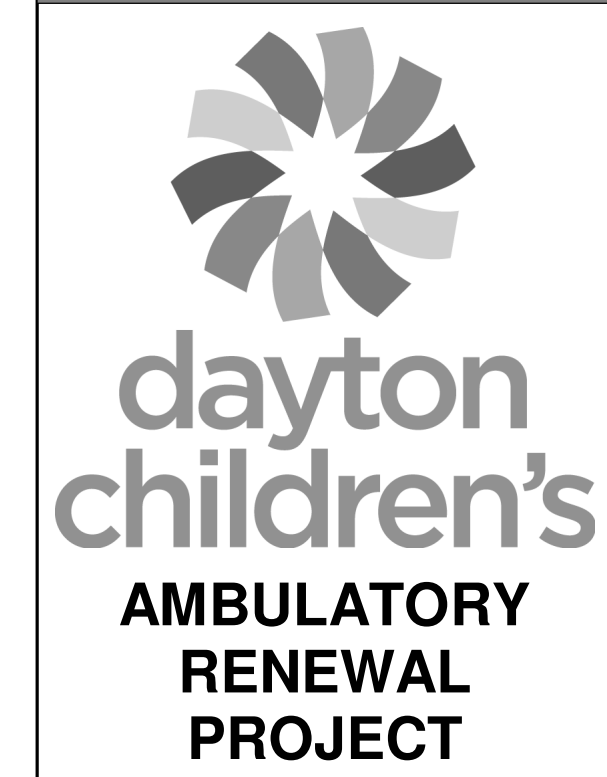
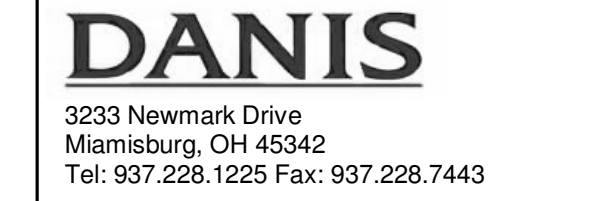


4 South Main Street, Suite 1300  
Dayton, OH 45402  
T 937.224.4474  
thinkchamplin.com

THINK CREATE REALIZE



865 Yard Street  
Columbus, OH 43214  
cannondesign.com



**ISSUANCES**

No.	Description	Date
1	FIT-OUT - LEVELS 4, 5, 6	2021.10.15

Drawn By: DAS  
Checked By: BAG  
Client No.: 627  
Project No.: 2018-05111

ROOF PLAN - HVAC

M106

11/10/2021 10:47:45 AM

