

Report By:

National TAB
1329 E. KEMPER ROAD
SUITE 4210
CINCINNATI, OH 45246



Report: TAB

Function: Test, Adjust, & Balance

Date: 06/17/2025

Completed By: National TAB

PROJECT

Horse Feathers (Palo Alto, CA)

855 El Camino Real

Palo Alto, CA 94301

Client

Martinico & Sons, Inc.

1776 S. 7th St.

San Jose, CA 95112

National TAB

Project: Horse Feathers (Palo Alto, CA)

Table Of Contents

| Section | Page # |
|------------|--------|
| Fan Coil | 3 |
| GRD LAYOUT | 7 |



National TAB

Project: Horse Feathers (Palo Alto, CA)

System/Unit: Fan Coil

Asset: FC-3

AREA:WEST DINING AREAS

| Unit Data | | |
|--------------------|--------|------------|
| | Design | Actual |
| MFG | NA | BRYANT |
| Model Num | NA | FJ4DNXC48 |
| Serial Num | - | 3223F02333 |
| Type | - | AHU |
| Num Filters Size 1 | - | 1 |
| Filter Size 1 | - | 20X24X1 |

| Motor Data | | |
|-------------------|--------|--------|
| | Design | Actual |
| Motor MFG | - | NL |
| Frame | - | NL |
| Horsepower | - | 3/4 |
| Motor Rpm | - | NL |
| Phase | 1 | 1 |
| Voltage (rated) | 208 | 208 |
| Amperage (rated) | - | 6.1 |
| Service Factor | - | NL |
| Brake Horse Power | - | 0.41 |

| Drive Data | |
|-------------------|--------|
| | Actual |
| Motor Sheave Size | DD |
| Motor Bore Size | DD |
| Fan Sheave Size | DD |
| Fan Sheave Bore | DD |
| Belt CL Distance | DD |
| Num of Belts | DD |
| Belt Size | DD |

| Test Data | | |
|-------------------|--------|-----------|
| | Design | Actual |
| SFAN CFM | 1600 | 1598 |
| SFAN RPM | - | LOW SPEED |
| Motor Frequency | - | N/A |
| Motor Speed SetPt | - | LOW SPEED |
| RL Voltage | 208 | 211 |
| RL Amperage | - | 3.3 |
| RA CFM | 1240 | 1244 |
| OA CFM | 360 | 354 |

| Performance Data | | |
|------------------|--------|--------|
| | Design | Actual |
| Suction ESP | - | -0.19" |
| Discharge ESP | - | 0.22" |
| Total ESP | 0.80 | 0.41" |

Completed By: Zack Eismin on 06/16/2025

Notes:
 UNIT BALANCED FOR COMFORT
 SEVERAL ADDED DIFFUSER NOT ON PLANS.

Written By: Zack Eismin on 06/17/2025



National TAB

Project: Horse Feathers (Palo Alto, CA)

Fan Coil

Diffuser Supply (GRD)

FC-3/WEST DINING AREAS

| Asset | | | | | | | |
|------------|-----------------|------|-------|------------|--------|-----------|-------------|
| Asset Name | Location | Type | Size | DESIGN CFM | CFM(1) | FINAL CFM | % to design |
| SGRD1 | PRIVATE DINING | SG-1 | 20X8 | 100 | 333 | 107 | 107.0 |
| SGRD2 | PRIVATE DINNING | SG-1 | 20X8 | 100 | 271 | 102 | 102.0 |
| SGRD3 | PRIVATE DINNING | SG-1 | 20X8 | 300 | 281 | 321 | 107.0 |
| SGRD4 | PRIVATE DINNING | SG-1 | 20X8 | 300 | 231 | 301 | 100.3 |
| SGRD5 | HALLWAY | SG-1 | 12X12 | 300 | 156 | 288 | 96.0 |
| SGRD6 | OFFICE | SG-1 | 24X24 | 300 | 123 | 277 | 92.3 |
| SGRD7 | STOCK ROOM | SG-1 | 24X24 | 200 | 211 | 202 | 101.0 |
| Total | | | | 1600 | 1606 | 1598 | 99.88% |

Diffuser Ret/Exh (GRD)

FC-3/WEST DINING AREAS

| Asset | | | | | | | | |
|------------|-----------------|------|------|------------|----|--------|-----------|-------------|
| Asset Name | Location | Type | Size | DESIGN CFM | AK | CFM(1) | FINAL CFM | % to design |
| EGRD1 | PRIVATE DINING | RG-1 | 20X8 | 620 | 1 | 633 | 633 | 102.1 |
| EGRD2 | PRIVATE DINNING | RG-1 | 20X8 | 620 | 1 | 611 | 611 | 98.5 |
| Total | | | | 1240 | | 1244 | 1244 | 100.32% |

Completed By: Zack Eismin on 06/16/2025



National TAB

Project: Horse Feathers (Palo Alto, CA)

System/Unit: Fan Coil

Asset: FC-4

AREA:EAST DINING AREAS

| Unit Data | | |
|--------------------|--------|------------|
| | Design | Actual |
| MFG | NA | BRYANT |
| Model Num | NA | FJ4DNXD60 |
| Serial Num | - | 3524F07033 |
| Type | - | AHU |
| Num Filters Size 1 | - | 1 |
| Filter Size 1 | - | 20X24X1 |

| Motor Data | | |
|-------------------|--------|--------|
| | Design | Actual |
| Motor MFG | - | NL |
| Frame | - | NL |
| Horsepower | - | 3/4 |
| Motor Rpm | - | NL |
| Phase | 1 | 1 |
| Voltage (rated) | 208 | 208 |
| Amperage (rated) | - | 6.1 |
| Service Factor | - | NL |
| Brake Horse Power | - | 0.63 |

| Drive Data | |
|-------------------|--------|
| | Actual |
| Motor Sheave Size | DD |
| Motor Bore Size | DD |
| Fan Sheave Size | DD |
| Fan Sheave Bore | DD |
| Belt CL Distance | DD |
| Num of Belts | DD |
| Belt Size | DD |

| Test Data | | |
|-------------------|--------|------------|
| | Design | Actual |
| SFAN CFM | 2000 | 1954 |
| SFAN RPM | - | HIGH SPEED |
| Motor Frequency | - | N/A |
| Motor Speed SetPt | - | HIGH SPEED |
| RL Voltage | 208 | 212 |
| RL Amperage | - | 5.2 |
| RA CFM | 1640 | 1621 |
| OA CFM | 360 | 333 |

| Performance Data | | |
|------------------|--------|--------|
| | Design | Actual |
| Suction ESP | - | -0.21" |
| Discharge ESP | - | 0.31 |
| Total ESP | 0.80 | 0.52" |

Completed By: Zack Eismin on 06/16/2025

Notes:
SEVERAL ADDED DIFFUSER NOT ON PLAN BALANCED FOR COMFORT.

Written By: Zack Eismin on 06/17/2025



National TAB

Project: Horse Feathers (Palo Alto, CA)

Fan Coil

Diffuser Supply (GRD)

FC-4/EAST DINING AREAS

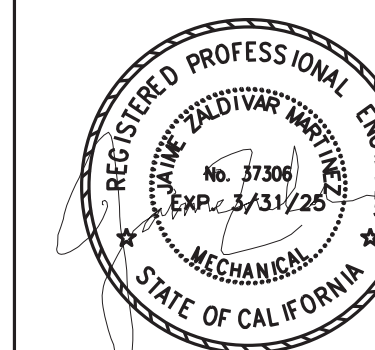
| Asset | | | | | | | |
|------------|----------|------|------|------------|--------|-----------|-------------|
| Asset Name | Location | Type | Size | DESIGN CFM | CFM(1) | FINAL CFM | % to design |
| SGRD1 | DINING | SG-1 | 14X6 | 200 | 120 | 188 | 94.0 |
| SGRD3 | DINING | SG-1 | 14X6 | 200 | 156 | 191 | 95.5 |
| SGRD4 | DINING | SG-1 | 14X6 | 200 | 188 | 189 | 94.5 |
| SGRD4 | DINING | SG-1 | 14X6 | 200 | 166 | 201 | 100.5 |
| SGRD5 | DINING | SG-1 | 14X6 | 200 | 170 | 199 | 99.5 |
| SGRD6 | DINING | SG-1 | 14X6 | 200 | 150 | 192 | 96.0 |
| SGRD7 | DINING | SG-1 | 14X6 | 200 | 348 | 210 | 105.0 |
| SGRD8 | DINING | SG-1 | 14X6 | 200 | 105 | 182 | 91.0 |
| SGRD9 | DINING | SG-1 | 14X6 | 200 | 127 | 191 | 95.5 |
| SGRD10 | DINING | SG-1 | 14X6 | 200 | 206 | 211 | 105.5 |
| Total | | | | 2000 | 1736 | 1954 | 97.7% |

Diffuser Ret/Exh (GRD)

FC-4/EAST DINING AREAS

| Asset | | | | | | | | |
|------------|----------|------|-------|------------|----|--------|-----------|-------------|
| Asset Name | Location | Type | Size | DESIGN CFM | AK | CFM(1) | FINAL CFM | % to design |
| EGRD1 | DINING | RG-2 | 40X10 | 1640 | 1 | 1621 | 1621 | 98.8 |
| Total | | | | 1640 | | 1621 | 1621 | 98.84% |

Completed By: Zack Eismin on 06/16/2025



| NO. | DESCRIPTION | DATE |
|-----|-------------|------|
| 1 | | |
| 2 | | |
| 3 | | |
| 4 | | |
| 5 | | |

ENGINEER BY:

DRAWN BY:

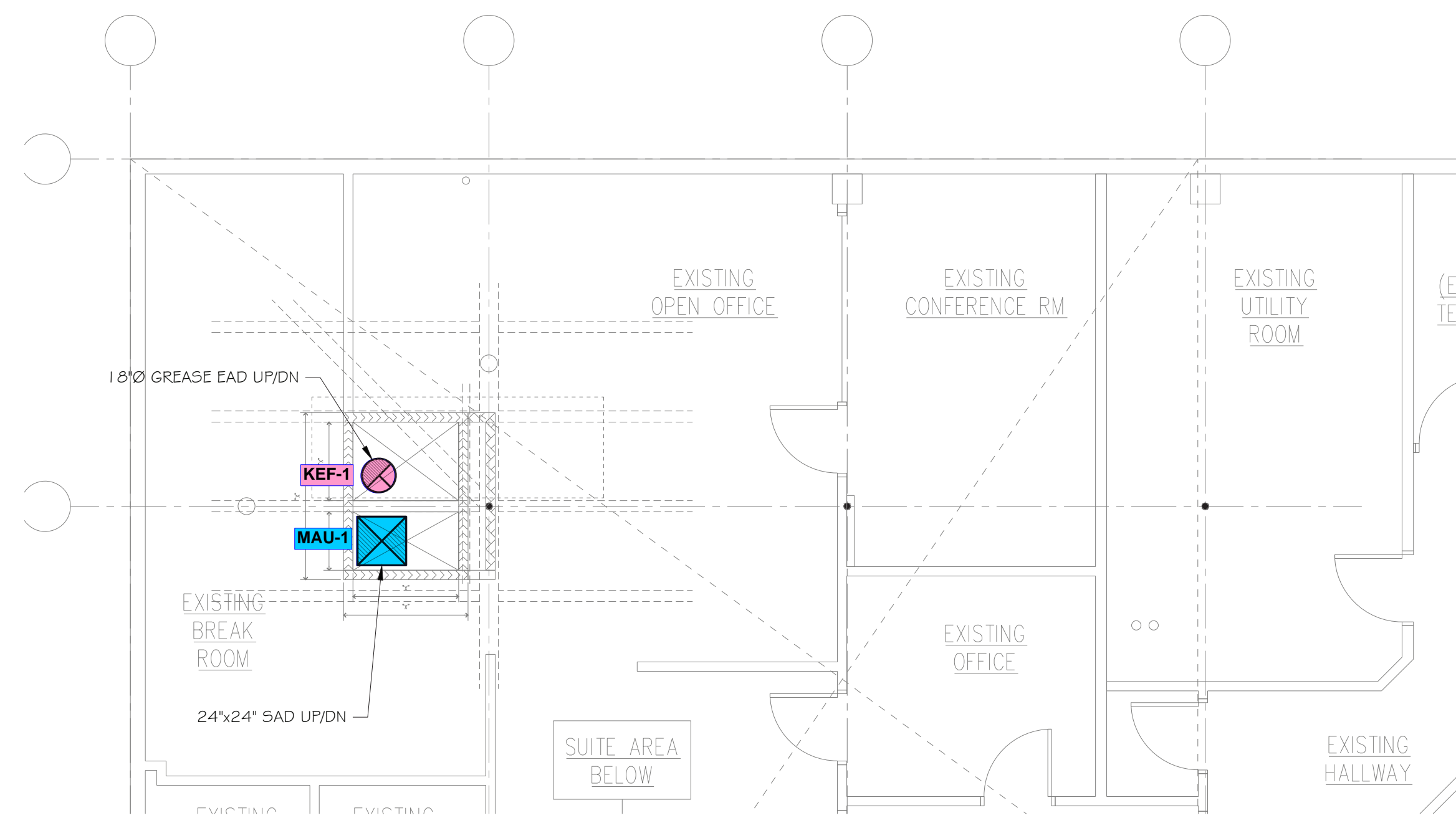
CHECKED BY:

SHEET NUMBER

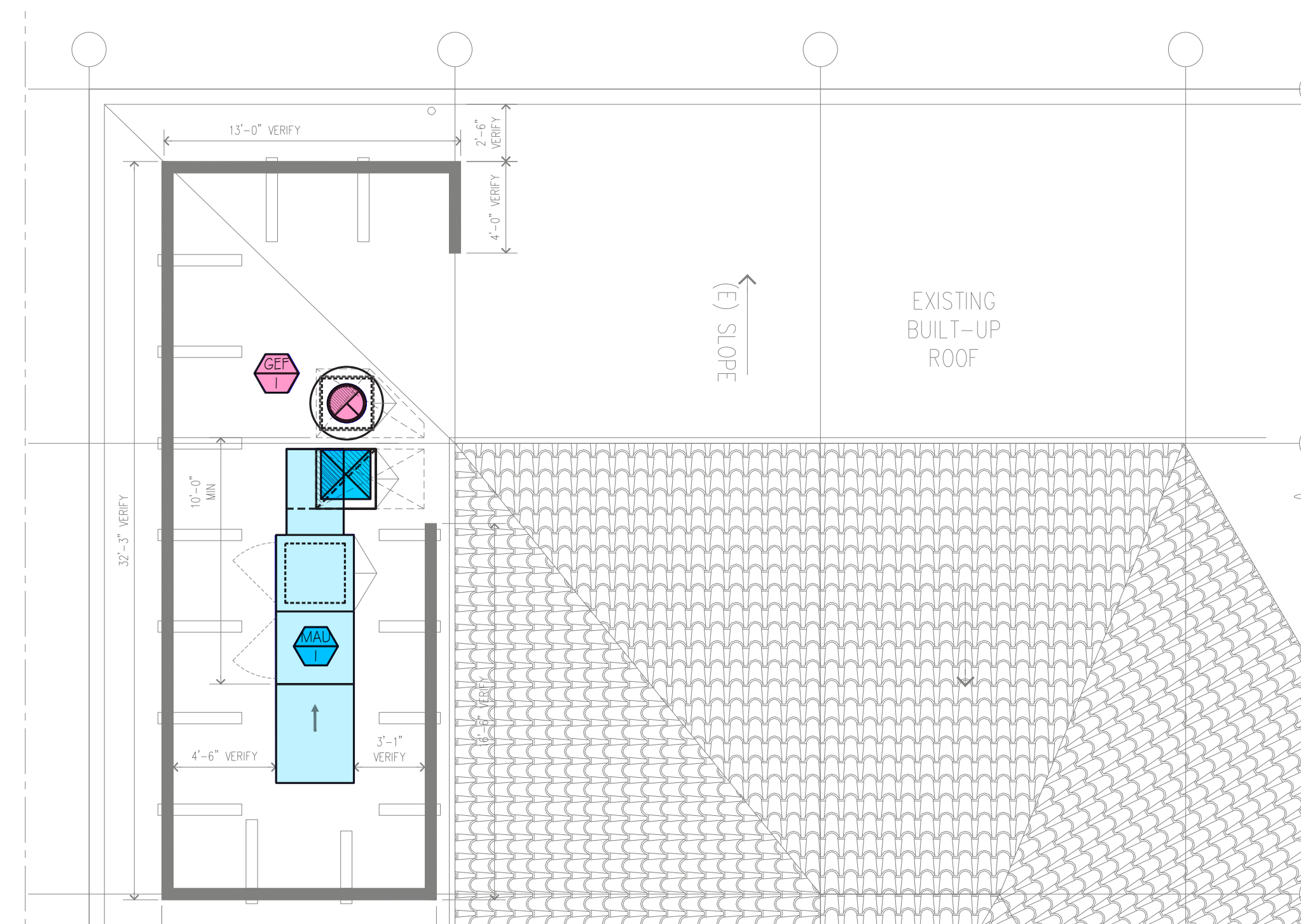
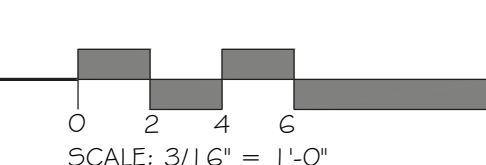
M2.1

SHEET OF
 THE USE OF THESE PLANS AND SPECIFICATIONS IS RESTRICTED TO THE ORIGINAL SITE FOR WHICH THEY WERE PREPARED, AND PUBLICATION THEREOF IS EXPRESSLY LIMITED TO SUCH USE. RE-USE, REPRODUCTION, OR PUBLICATION BY ANY METHOD IN WHOLE OR IN PART IS PROHIBITED. TITLE TO THE PLANS AND SPECIFICATIONS REMAINS WITH THE ENGINEER AND VISUAL CONTACT WITH THEM CONSTITUTES PRIMA FACIE EVIDENCE OF THE ACCEPTANCE OF THESE RESTRICTIONS.

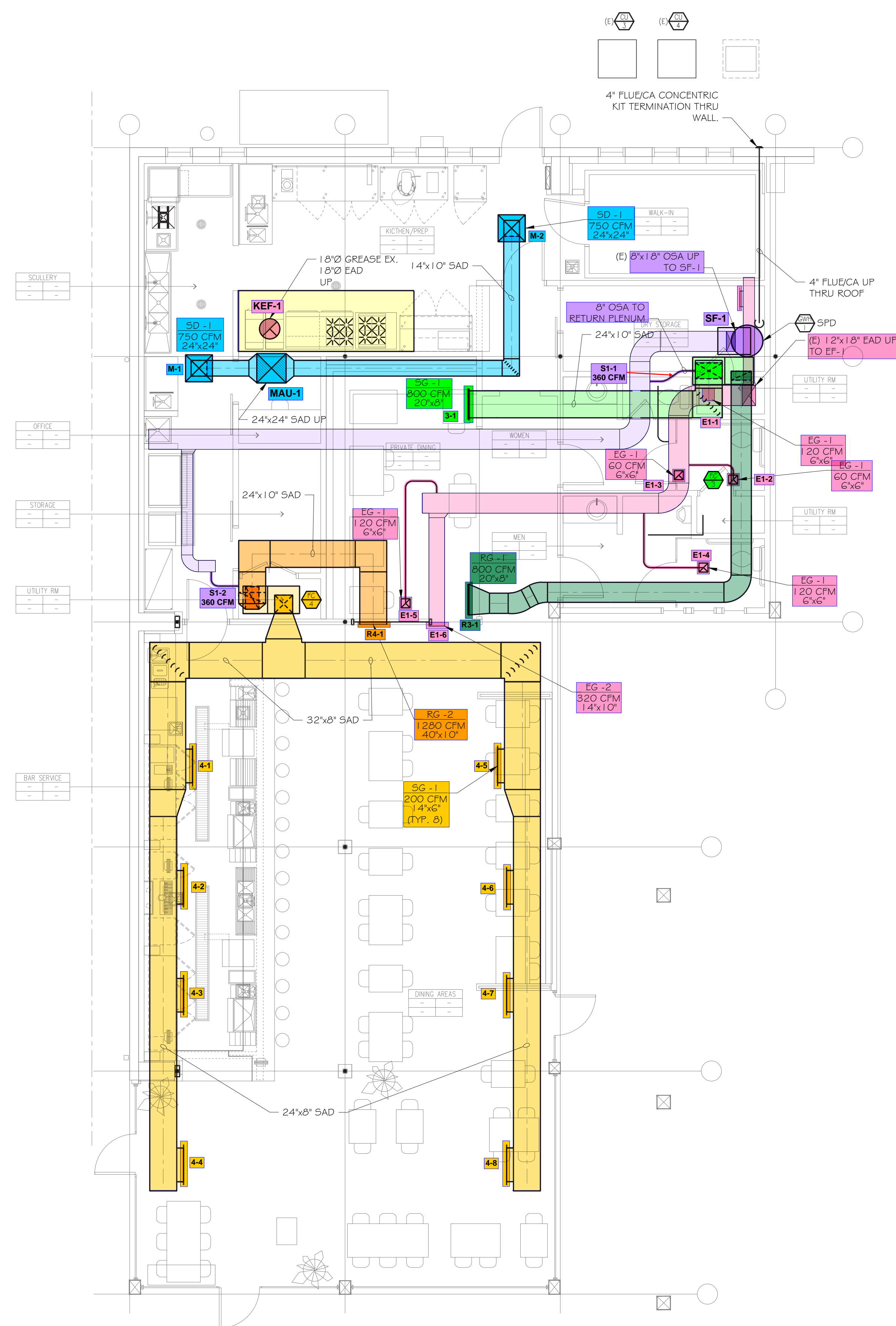
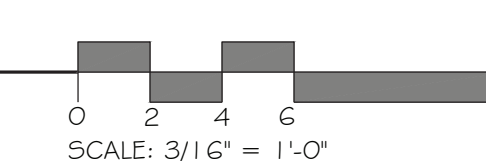
STAFF 2ND FLOOR PLAN



1 SECOND FLOOR PLAN - NEW MECHANICAL
 M2.1 SCALE: 3/16" = 1'-0"



1 SECOND FLOOR PLAN - NEW MECHANICAL
 M2.1 SCALE: 3/16" = 1'-0"



2 FIRST FLOOR PLAN - NEW MECHANICAL
 M2.1 SCALE: 3/16" = 1'-0"

