

**SDV Job #: 6535170 - Penn Station V2B-R (Greenville, OH)**

**Service Region:** 335 - Indiana Service  
**Service Person:** Clint Beranek

**Customer Number:** 606795      **Customer Name:** Region 120 - Air Solutions

**Address:** PENN STATION  
1453 Wagner Avenue  
B  
Greenville, OH 45331

**Region Job #:** 6277370  
**Region Job Name:** Penn Station V2B-R (Greenville, OH)

**Sales Region:** 120 - Air Solutions  
**Sales Person:** Joe Hertenstein

**Created By:** Clint Beranek      **Creation Date:** 3/26/2024 12:38 PM  
**Last Modified By:** Clint Beranek      **Last Modified Date:** 3/28/2024 12:41 PM

**Dining Room Pressure:** 0      **Kitchen Pressure:** 0  
**Hours On Job:** 0      **Extra Hours:** 0

**Completed:** Yes      **Completed By:** Clint Beranek  
**Completion Date:** 3/28/2024 12:41 PM

**Job Site Meeting**

NONE

**Hood Group 1**

**Exhaust CFM:** Design = 1120      Initial = 1494      Final = 1227      (109.6% of design)

**Other Notes:**

N/A



**Hood 1 ( HD1-Grill ) (HD1-Grill)**

**Model:** 3650ELPX-2      **Length:** 6' 0"  
**Exhaust CFM:** Design = 1120      Initial = 1494      Final = 1227      (109.6% of design)

**Installation**

|   |                    |                    |
|---|--------------------|--------------------|
| Hung Using appropriate material to safely secure hood.        | Design: <b>Yes</b> | Actual: <b>Yes</b> |
| COOKING EQUIPMENT ON AND OPERATING                            | Design: <b>Yes</b> | Actual: <b>No</b>  |
| COOKING EQUIPMENT INSTALLED AS CLOSE TO BACK WALL AS POSSIBLE | Design: <b>Yes</b> | Actual: <b>Yes</b> |
| END PANELS INSTALLED CORRECTLY                                | Design: <b>Yes</b> | Actual: <b>Yes</b> |
| Smoke Test Performed on all Hoods? Upload Video               | Design: <b>Yes</b> | Actual: <b>Yes</b> |
| Measure the Front lower edge of the Hood to the Floor. (AFF)  | Design: <b>72</b>  | Actual: <b>72</b>  |
| Is there insulation on Top of the Hood?                       | Design: <b>Yes</b> | Actual: <b>Yes</b> |

## Filters

**Type:** Captrate Solo

|   |             |                           |                         |                  |                |
|---|-------------|---------------------------|-------------------------|------------------|----------------|
| <b>Filter 1</b><br>Fan: #1 - EADU85H (KEF1) | Size: 16x16 | Initial Velocity: 260 fpm | Final Velocity: 185 fpm | Initial CFM: 397 | Final CFM: 282 |
| <b>Filter 2</b><br>Fan: #1 - EADU85H (KEF1) | Size: 16x16 | Initial Velocity: 234 fpm | Final Velocity: 194 fpm | Initial CFM: 357 | Final CFM: 296 |
| <b>Filter 3</b><br>Fan: #1 - EADU85H (KEF1) | Size: 16x16 | Initial Velocity: 234 fpm | Final Velocity: 201 fpm | Initial CFM: 357 | Final CFM: 307 |
| <b>Filter 4</b><br>Fan: #1 - EADU85H (KEF1) | Size: 16x16 | Initial Velocity: 251 fpm | Final Velocity: 224 fpm | Initial CFM: 383 | Final CFM: 342 |

## Hood Group 2

|                       |              |                |              |                    |
|-----------------------|--------------|----------------|--------------|--------------------|
| <b>Exhaust CFM:</b>   | Design = 0   | Initial = 0    | Final = 0    | (0% of design)     |
| <b>Supply CFM:</b>    | Design = 910 | Initial = 1400 | Final = 1032 | (113.4% of design) |
| <b>Supply AC CFM:</b> | Design = 0   | Initial = 69   | Final = 69   | (0% of design)     |

## Hood 2 ( HD1-PSP ) (HD1-PSP)

|                     |                    |                |                          |
|---------------------|--------------------|----------------|--------------------------|
| <b>Model:</b>       | 246Misc ACPSP-ONLY | <b>Length:</b> | 6' 0"                    |
| <b>Exhaust CFM:</b> | Design = 0         | Initial = 0    | Final = 0 (0% of design) |

## Installation

|   |                    |                    |
|---|--------------------|--------------------|
| Hung Using appropriate material to safely secure hood.        | Design: <b>Yes</b> | Actual: <b>Yes</b> |
| COOKING EQUIPMENT ON AND OPERATING                            | Design: <b>Yes</b> | Actual: <b>No</b>  |
| COOKING EQUIPMENT INSTALLED AS CLOSE TO BACK WALL AS POSSIBLE | Design: <b>Yes</b> | Actual: <b>Yes</b> |
| Smoke Test Performed on all Hoods? Upload Video               | Design: <b>Yes</b> | Actual: <b>Yes</b> |
| <b>Other Notes:</b>   |                    |                    |
| N/A   |                    |                    |
| See attachment(s): [202403261357610186.mp4]                   |                    |                    |
| Measure the Front lower edge of the Hood to the Floor. (AFF)  | Design: <b>80</b>  | Actual: <b>80</b>  |
| Is there insulation on Top of the Hood?                       | Design: <b>Yes</b> | Actual: <b>Yes</b> |

## Supply

**Supply CFM:** Design = 910 Initial = 1400 Actual = 1032 (113.4% of design)

Fan: #4 - EA1-D.250-15D (HMUA1)

**AC CFM:** Design = 0 Initial = 69 Actual = 69 (0% of design)

## PSP 1

|                     |              |                |              |                |     |               |   |                |   |
|---------------------|--------------|----------------|--------------|----------------|-----|---------------|---|----------------|---|
| <b>Orientation:</b> | Front        | <b>Length:</b> | 6' 0"        | <b>Width:</b>  | 14" | <b>Banks:</b> | 1 | <b>Blanks:</b> | 1 |
| <b>CFM:</b>         | Design = 910 | Initial = 1400 | Final = 1032 | (0% of design) |     |               |   |                |   |
| <b>Velocity:</b>    | Design = 153 | Initial = 0    | Final = 0    | (0% of design) |     |               |   |                |   |
| <b>AC CFM:</b>      | Design = 465 | Initial = 69   | Final = 69   | (0% of design) |     |               |   |                |   |
| <b>AC Velocity:</b> | Design = 0   | Initial = 0    | Final = 0    | (0% of design) |     |               |   |                |   |

### Readings:

1: Initial: 185 fpm, Final: 124 fpm    2: Initial: 194 fpm, Final: 194 fpm    3: Initial: 201 fpm, Final: 145 fpm  
4: Initial: 224 fpm, Final: 167 fpm    5: Initial: 229 fpm, Final: 141 fpm    6: Initial: 238 fpm, Final: 166 fpm

### AC Readings:

1: Initial: 34 fpm, Final: 34 fpm    2: Initial: 43 fpm, Final: 43 fpm    3: Initial: 23 fpm, Final: 23 fpm  
4: Initial: 19 fpm, Final: 19 fpm    5: Initial: 21 fpm, Final: 21 fpm    6: Initial: 31 fpm, Final: 31 fpm

## Hood Group 4

**Exhaust CFM:** Design = 850 Initial = 1073 Final = 930 (109.4% of design)

### Other Notes:

N/A



## Hood 3 ( HD3-Fry ) (HD3-Fry)

**Model:** 3650ELPX-2    **Length:** 4' 2"  
**Exhaust CFM:** Design = 850 Initial = 1073 Final = 930 (109.4% of design)

## Installation

|   |                    |                    |
|---|--------------------|--------------------|
| Hung Using appropriate material to safely secure hood.        | Design: <b>Yes</b> | Actual: <b>Yes</b> |
| COOKING EQUIPMENT ON AND OPERATING                            | Design: <b>Yes</b> | Actual: <b>No</b>  |
| COOKING EQUIPMENT INSTALLED AS CLOSE TO BACK WALL AS POSSIBLE | Design: <b>Yes</b> | Actual: <b>Yes</b> |
| END PANELS INSTALLED CORRECTLY                                | Design: <b>Yes</b> | Actual: <b>Yes</b> |
| Smoke Test Performed on all Hoods? Upload Video               | Design: <b>Yes</b> | Actual: <b>Yes</b> |
| Measure the Front lower edge of the Hood to the Floor. (AFF)  | Design: <b>72</b>  | Actual: <b>72</b>  |
| Is there insulation on Top of the Hood?                       | Design: <b>Yes</b> | Actual: <b>Yes</b> |

### Filters

|                              |               |                           |                         |                  |                |
|------------------------------|---------------|---------------------------|-------------------------|------------------|----------------|
| <b>Type:</b>                 | Captrate Solo |                           |                         |                  |                |
| <b>Filter 1</b>              | Size: 16x16   | Initial Velocity: 247 fpm | Final Velocity: 229 fpm | Initial CFM: 377 | Final CFM: 349 |
| Fan: #3 - EADU85H (KEF3-FRY) |               |                           |                         |                  |                |
| <b>Filter 2</b>              | Size: 16x16   | Initial Velocity: 220 fpm | Final Velocity: 208 fpm | Initial CFM: 336 | Final CFM: 317 |
| Fan: #3 - EADU85H (KEF3-FRY) |               |                           |                         |                  |                |
| <b>Filter 3</b>              | Size: 16x16   | Initial Velocity: 236 fpm | Final Velocity: 173 fpm | Initial CFM: 360 | Final CFM: 264 |
| Fan: #3 - EADU85H (KEF3-FRY) |               |                           |                         |                  |                |

### Hood Group 5

|                       |              |               |             |                    |
|-----------------------|--------------|---------------|-------------|--------------------|
| <b>Exhaust CFM:</b>   | Design = 0   | Initial = 0   | Final = 0   | (0% of design)     |
| <b>Supply CFM:</b>    | Design = 550 | Initial = 826 | Final = 560 | (101.8% of design) |
| <b>Supply AC CFM:</b> | Design = 0   | Initial = 59  | Final = 59  | (0% of design)     |

**Other Notes:**

N/A



### Hood 4 ( HD3-PSP ) (HD3-PSP)

|                     |                    |                |                          |
|---------------------|--------------------|----------------|--------------------------|
| <b>Model:</b>       | 246Misc ACPSP-ONLY | <b>Length:</b> | 4' 2"                    |
| <b>Exhaust CFM:</b> | Design = 0         | Initial = 0    | Final = 0 (0% of design) |

## Installation

|   |                    |                    |
|---|--------------------|--------------------|
| Hung Using appropriate material to safely secure hood.        | Design: <b>Yes</b> | Actual: <b>Yes</b> |
| COOKING EQUIPMENT ON AND OPERATING                            | Design: <b>Yes</b> | Actual: <b>No</b>  |
| COOKING EQUIPMENT INSTALLED AS CLOSE TO BACK WALL AS POSSIBLE | Design: <b>Yes</b> | Actual: <b>Yes</b> |
| Smoke Test Performed on all Hoods? Upload Video               | Design: <b>Yes</b> | Actual: <b>Yes</b> |

### Other Notes:

N/A

See attachment(s): [202403261357917413.mp4]

|  |                    |                    |
|--|--------------------|--------------------|
| Measure the Front lower edge of the Hood to the Floor. (AFF) | Design: <b>80</b>  | Actual: <b>80</b>  |
| Is there insulation on Top of the Hood?                      | Design: <b>Yes</b> | Actual: <b>Yes</b> |

## Supply

|   |              |               |              |                    |
|---|--------------|---------------|--------------|--------------------|
| <b>Supply CFM:</b><br>Fan: #4 - EA1-D.250-15D (HMUA1) | Design = 550 | Initial = 826 | Actual = 560 | (101.8% of design) |
| <b>AC CFM:</b>  | Design = 0   | Initial = 59  | Actual = 59  | (0% of design)     |

### PSP 1

|                     |              |                |             |                |     |               |   |                |   |
|---------------------|--------------|----------------|-------------|----------------|-----|---------------|---|----------------|---|
| <b>Orientation:</b> | Front        | <b>Length:</b> | 4' 2"       | <b>Width:</b>  | 14" | <b>Banks:</b> | 1 | <b>Blanks:</b> | 1 |
| <b>CFM:</b>         | Design = 550 | Initial = 826  | Final = 560 | (0% of design) |     |               |   |                |   |
| <b>Velocity:</b>    | Design = 137 | Initial = 0    | Final = 0   | (0% of design) |     |               |   |                |   |
| <b>AC CFM:</b>      | Design = 250 | Initial = 59   | Final = 59  | (0% of design) |     |               |   |                |   |
| <b>AC Velocity:</b> | Design = 0   | Initial = 0    | Final = 0   | (0% of design) |     |               |   |                |   |

### Readings:

1: Initial: 163 fpm, Final: 111 fpm    2: Initial: 183 fpm, Final: 127 fpm    3: Initial: 191 fpm, Final: 141 fpm  
 4: Initial: 201 fpm, Final: 132 fpm    5: Initial: 189 fpm, Final: 122 fpm    6: Initial: 181 fpm, Final: 118 fpm

### AC Readings:

1: Initial: 29 fpm, Final: 29 fpm    2: Initial: 32 fpm, Final: 32 fpm    3: Initial: 38 fpm, Final: 38 fpm  
 4: Initial: 41 fpm, Final: 41 fpm    5: Initial: 44 fpm, Final: 44 fpm    6: Initial: 32 fpm, Final: 32 fpm

## Fans

### Fan 1 - EADU85H (KEF1) (KEF1)

**Model:** EADU85H

**Other Notes:**

N/A



**Exhaust**

|  |                        |               |                        |
|--|------------------------|---------------|------------------------|
| <b>Exhaust CFM:</b>  | Design = 1250          | Actual = 1227 | (98% of design)        |
| Record the ECM Speed   |                        |               | Actual: <b>43</b>      |
| VOLTS  | Design: <b>115</b>     |               | Actual: <b>121</b>     |
| Do all legs measure the same phase to phase and phase to ground voltage? If not, include notes with all phase to phase and phase to ground voltages. | Design: <b>Yes</b>     |               | Actual: <b>Yes</b>     |
| HP   | Design: <b>0.75</b>    |               | Actual: <b>0.75</b>    |
| HUB SET SCREW TIGHT  | Design: <b>Yes</b>     |               | Actual: <b>Yes</b>     |
| FAN LEVEL  | Design: <b>Yes</b>     |               | Actual: <b>Yes</b>     |
| ROTATION   | Design: <b>Correct</b> |               | Actual: <b>Correct</b> |
| FAN VIBRATION  | Design: <b>Good</b>    |               | Actual: <b>Good</b>    |
| RPM - DESIGN   | Design: <b>1278</b>    |               | Actual: <b>774</b>     |
| RPM - MAX  | Design: <b>1900</b>    |               | Actual: <b>N/A</b>     |
| RPM - MAX RECOMMENDED  | Design: <b>1600</b>    |               | Actual: <b>N/A</b>     |
| FLA  | Design: <b>8.9</b>     |               | Actual: <b>4.2</b>     |
| OVERLOAD SET POINT   | Design: <b>8.9</b>     |               | Actual: <b>8.6</b>     |
| PHASE  | Design: <b>1</b>       |               | Actual: <b>1</b>       |
| Unit within five miles from the coast?   |                        |               | Actual: <b>No</b>      |
| INSPECT ALL EXTERIOR SIDES OF UNIT. ANY VISIBLE DAMAGE   | Design: <b>No</b>      |               | Actual: <b>No</b>      |
| SPEED CONTROL VOLTAGE  | Design: <b>65</b>      |               | Actual: <b>65</b>      |

**Fan 2 - EADU33H (KEF2-OVEN) (KEF2-OVEN)**

**Model:** EADU33H

**Other Notes:**

N/A



**Exhaust**

|  |                        |              |                        |
|--|------------------------|--------------|------------------------|
| <b>Exhaust CFM:</b>  | Design = 550           | Actual = 541 | (98% of design)        |
| Record the ECM Speed   |                        |              | Actual: <b>1</b>       |
| VOLTS  | Design: <b>115</b>     |              | Actual: <b>121</b>     |
| Do all legs measure the same phase to phase and phase to ground voltage? If not, include notes with all phase to phase and phase to ground voltages. | Design: <b>Yes</b>     |              | Actual: <b>Yes</b>     |
| HP   | Design: <b>0.333</b>   |              | Actual: <b>0.33</b>    |
| HUB SET SCREW TIGHT  | Design: <b>Yes</b>     |              | Actual: <b>Yes</b>     |
| FAN LEVEL  | Design: <b>Yes</b>     |              | Actual: <b>Yes</b>     |
| ROTATION   | Design: <b>Correct</b> |              | Actual: <b>Correct</b> |
| FAN VIBRATION  | Design: <b>Good</b>    |              | Actual: <b>Good</b>    |
| RPM - DESIGN   | Design: <b>1300</b>    |              | Actual: <b>18</b>      |
| RPM - MAX  | Design: <b>2000</b>    |              | Actual: <b>N/A</b>     |
| RPM - MAX RECOMMENDED  | Design: <b>1600</b>    |              | Actual: <b>N/A</b>     |
| FLA  | Design: <b>4.3</b>     |              | Actual: <b>2.2</b>     |
| OVERLOAD SET POINT   | Design: <b>4.3</b>     |              | Actual: <b>4.3</b>     |
| PHASE  | Design: <b>1</b>       |              | Actual: <b>1</b>       |
| Unit within five miles from the coast?   |                        |              | Actual: <b>No</b>      |
| INSPECT ALL EXTERIOR SIDES OF UNIT. ANY VISIBLE DAMAGE   | Design: <b>No</b>      |              | Actual: <b>No</b>      |
| SPEED CONTROL VOLTAGE  | Design: <b>65</b>      |              | Actual: <b>65</b>      |

**Fan 3 - EADU85H (KEF3-FRY) (KEF3-FRY)**

**Model:** EADU85H

**Other Notes:**

N/A



**Exhaust**

|  |                        |              |                        |
|--|------------------------|--------------|------------------------|
| <b>Exhaust CFM:</b>  | Design = 850           | Actual = 930 | (109% of design)       |
| Record the ECM Speed   |                        |              | Actual: <b>42</b>      |
| VOLTS  | Design: <b>115</b>     |              | Actual: <b>121</b>     |
| Do all legs measure the same phase to phase and phase to ground voltage? If not, include notes with all phase to phase and phase to ground voltages. | Design: <b>Yes</b>     |              | Actual: <b>Yes</b>     |
| HP   | Design: <b>0.75</b>    |              | Actual: <b>0.75</b>    |
| HUB SET SCREW TIGHT  | Design: <b>Yes</b>     |              | Actual: <b>Yes</b>     |
| FAN LEVEL  | Design: <b>Yes</b>     |              | Actual: <b>Yes</b>     |
| ROTATION   | Design: <b>Correct</b> |              | Actual: <b>Correct</b> |
| FAN VIBRATION  | Design: <b>Good</b>    |              | Actual: <b>Good</b>    |
| RPM - DESIGN   | Design: <b>1189</b>    |              | Actual: <b>756</b>     |
| RPM - MAX  | Design: <b>1900</b>    |              | Actual: <b>N/A</b>     |
| RPM - MAX RECOMMENDED  | Design: <b>1600</b>    |              | Actual: <b>N/A</b>     |
| FLA  | Design: <b>8.9</b>     |              | Actual: <b>4.2</b>     |
| OVERLOAD SET POINT   | Design: <b>8.9</b>     |              | Actual: <b>8.9</b>     |
| PHASE  | Design: <b>1</b>       |              | Actual: <b>1</b>       |
| Unit within five miles from the coast?   |                        |              | Actual: <b>No</b>      |
| INSPECT ALL EXTERIOR SIDES OF UNIT. ANY VISIBLE DAMAGE   | Design: <b>No</b>      |              | Actual: <b>No</b>      |
| SPEED CONTROL VOLTAGE  | Design: <b>65</b>      |              | Actual: <b>65</b>      |

**Fan 4 - EA1-D.250-15D (HMUA1) (HMUA1)**

**Model:** EA1-D.250-15D

**Other Notes:**

N/A



**Supply**

|   |                        |                        |                 |
|---|------------------------|------------------------|-----------------|
| <b>Supply CFM:</b>  | Design = 1630          | Actual = 1592          | (98% of design) |
| VOLTS   | Design: <b>208</b>     | Actual: <b>213</b>     |                 |
| Is the main transformer (TR-01) tapped for the correct voltage? |                        | Actual: <b>Yes</b>     |                 |
| HP  | Design: <b>1.5</b>     | Actual: <b>1.5</b>     |                 |
| HUB SET SCREW TIGHT   | Design: <b>Yes</b>     | Actual: <b>Yes</b>     |                 |
| FAN LEVEL   | Design: <b>Yes</b>     | Actual: <b>Yes</b>     |                 |
| ROTATION  | Design: <b>Correct</b> | Actual: <b>Correct</b> |                 |
| FAN VIBRATION   | Design: <b>Good</b>    | Actual: <b>Good</b>    |                 |
| RPM - DESIGN  | Design: <b>1762</b>    | Actual: <b>1516</b>    |                 |
| RPM - MAX   | Design: <b>3000</b>    | Actual: <b>N/A</b>     |                 |
| RPM - MAX RECOMMENDED   | Design: <b>2400</b>    | Actual: <b>N/A</b>     |                 |
| FLA   | Design: <b>4.4</b>     | Actual: <b>2.5</b>     |                 |
| OVERLOAD SET POINT  | Design: <b>4.4</b>     | Actual: <b>4.4</b>     |                 |
| PHASE   | Design: <b>3</b>       | Actual: <b>3</b>       |                 |
| DAMPER INSTALLED  | Design: <b>Yes</b>     | Actual: <b>Yes</b>     |                 |
| Unit within five miles from the coast?                          |                        | Actual: <b>No</b>      |                 |
| INSPECT ALL EXTERIOR SIDES OF UNIT. ANY VISIBLE DAMAGE          |                        | Actual: <b>No</b>      |                 |
| Record the VFD HZ   | Design: <b>60.4 Hz</b> | Actual: <b>52</b>      |                 |
| Is Supply Fan bolted/secured to curb?                           | Design: <b>Yes</b>     | Actual: <b>Yes</b>     |                 |

**Heater**

**Gas Heater**

|                         |                        |                        |
|-------------------------|------------------------|------------------------|
| GAS TYPE                | Design: <b>Natural</b> | Actual: <b>Natural</b> |
| INLET GAS PRESSURE      | Design: <b>7</b>       | Actual: <b>10</b>      |
| FREEZE STAT TEMPERATURE | <b>N/A</b>             |                        |
| FREEZE STAT TIMER       | <b>N/A</b>             |                        |
| SPACE SET POINT         | Design: <b>N/A</b>     | Actual: <b>N/A</b>     |
| INTAKE SET POINT        | Design: <b>45</b>      | Actual: <b>50</b>      |
| DISCHARGE SET POINT     | Design: <b>55</b>      | Actual: <b>60</b>      |
| HIGH LIMIT SET POINT    |                        | Actual: <b>N/A</b>     |

### Direct Fired Heater

|                                 |                    |                                 |    |
|---------------------------------|--------------------|---------------------------------|----|
| <b>Housing Size:</b>            | 1                  | <b>Burner Profile Pressure:</b> | 0" |
| PILOT FLAME SIGNAL              | Design: <b>12</b>  | Actual: <b>15.9</b>             |    |
| TEMP RISE                       | Design: <b>63</b>  | Actual: <b>65</b>               |    |
| HIGH FIRE MANIFOLD GAS PRESSURE | Design: <b>0.4</b> | Actual: <b>0.3</b>              |    |
| HIGH FIRE INLET PRESSURE        |                    | Actual: <b>9</b>                |    |
| HIGH FIRE FLAME SIGNAL          | Design: <b>12</b>  | Actual: <b>15.9</b>             |    |
| BURNER DIFFERENTIAL PRESSURE    | Design: <b>0.3</b> | Actual: <b>0.45</b>             |    |
| LOW MANIFOLD GAS PRESSURE       |                    | Actual: <b>N/A</b>              |    |
| MODULATION TIME                 | Design: <b>4</b>   | Actual: <b>2</b>                |    |
| LOW FIRE FLAME SIGNAL           | Design: <b>12</b>  | Actual: <b>15.9</b>             |    |

## ECPs

### ECP 1 - SC-E013022MA ( ECP1 ) (ECP1)

**Package #:** SC-E013022MA

### Smart Control

|  |                           |                            |
|--|---------------------------|----------------------------|
| GAS VALVE RESET WORKS  | Design: <b>Yes</b>        | Actual: <b>Yes</b>         |
| ROOM TEMPERATURE OFFSET  | Design: <b>20</b>         | Actual: <b>20</b>          |
| HOW MANY FAN ZONES ARE THERE                                       | Design: <b>2</b>          | Actual: <b>3</b>           |
| HYSTERESIS TEMPERATURE   |                           | Actual: <b>2</b>           |
| Room Sensor Type   | Design: <b>RoomSensor</b> | Actual: <b>Room Sensor</b> |
| Is room sensor wireless or wired?                                  |                           | Actual: <b>Wired</b>       |
| Is room sensor operating correctly? Upload Picture of installation |                           | Actual: <b>Yes</b>         |

**Other Notes:**

N/A



|  |                        |                        |
|--|------------------------|------------------------|
| Are there Tempering HMI's?                 | Design: <b>Yes</b>     | Actual: <b>No</b>      |
| ALL TEMP SENSORS ARE WIRED IN              | Design: <b>Yes</b>     | Actual: <b>Yes</b>     |
| Do any of the light circuits exceed 1400W? | Design: <b>No</b>      | Actual: <b>No</b>      |
| ALL LIGHTS WORK                            | Design: <b>Yes</b>     | Actual: <b>Yes</b>     |
| ALL FAULTS CLEARED                         | Design: <b>Yes</b>     | Actual: <b>Yes</b>     |
| ECPM03 HARDWARE REVISION                   | Design: <b>4</b>       | Actual: <b>4</b>       |
| ECPM03 PROGRAM VERSION                     | Design: <b>2.16.01</b> | Actual: <b>2.16.01</b> |
| CASHMI HARDWARE REVISION                   | Design: <b>5</b>       | Actual: <b>5</b>       |
| CASHMI PROGRAM VERSION                     | Design: <b>2.16.01</b> | Actual: <b>2.16.01</b> |
| ECPM03 DATE AND TIME ACCURATE              | Design: <b>Yes</b>     | Actual: <b>Yes</b>     |

**BMS & Monitoring**

|   |                         |                         |
|---|-------------------------|-------------------------|
| BMS TYPE  | Design: <b>CASLink</b>  | Actual: <b>CASLink</b>  |
| CASLINK COMMUNICATION TYPE                                  | Design: <b>Cellular</b> | Actual: <b>Cellular</b> |
| Cellular status is Active Online?                           | Design: <b>Yes</b>      | Actual: <b>Yes</b>      |
| CASLink Registration Wizard was completed?                  | Design: <b>Yes</b>      | Actual: <b>Yes</b>      |
| CASLink Module has a current heartbeat?                     | Design: <b>Yes</b>      | Actual: <b>Yes</b>      |
| All devices connected to the SCADA are reporting live data? | Design: <b>Yes</b>      | Actual: <b>Yes</b>      |
| Devices were assigned to an area and named appropriately?   | Design: <b>Yes</b>      | Actual: <b>Yes</b>      |

## Sensors

### T2

|                 |                          |                          |
|-----------------|--------------------------|--------------------------|
| SENSOR TYPE     | Design: <b>Duct Stat</b> | Actual: <b>Duct Stat</b> |
| SENSOR LOCATION | Design: <b>H1CV1</b>     | Actual: <b>H1cv1</b>     |
| FAN NUMBER      | Design: <b>1</b>         | Actual: <b>1</b>         |

### T3

|                 |                          |                          |
|-----------------|--------------------------|--------------------------|
| SENSOR TYPE     | Design: <b>Duct Stat</b> | Actual: <b>Duct Stat</b> |
| SENSOR LOCATION | Design: <b>H3CV1</b>     | Actual: <b>H3cv1</b>     |
| FAN NUMBER      | Design: <b>3</b>         | Actual: <b>3</b>         |

## VFDs

### VFD 1

|               |                        |                        |
|---------------|------------------------|------------------------|
| DESIGN CFM    | Design: <b>1630</b>    | Actual: <b>N/A</b>     |
| FAN DIRECTION | Design: <b>Forward</b> | Actual: <b>Forward</b> |

### DCV VFD

|                           |                     |                    |
|---------------------------|---------------------|--------------------|
| SUPPLY FAN # ASSIGNED     | Design: <b>4</b>    | Actual: <b>3</b>   |
| OVERLOAD = P108           | Design: <b>73</b>   | Actual: <b>73</b>  |
| MAX HZ                    | Design: <b>60.4</b> | Actual: <b>N/A</b> |
| ALL FAULTS CLEARED = P197 | Design: <b>Yes</b>  | Actual: <b>Yes</b> |
| P508                      |                     | Actual: <b>N/A</b> |
| LOAD IN SEPARATE CONDUIT. | Design: <b>Yes</b>  | Actual: <b>Yes</b> |

## TANK

### TANK ECP 1 (ECP1)

**Location :** Hood #1 3650ELPX-2: Fire Cabinet Wall Mounted [4.0/4.0/4.0]

**Other Notes:**

*This fire stat is not wired in*



|   |                     |                     |
|---|---------------------|---------------------|
| Building Alarm Tied In                        | Design: <b>Yes</b>  | Actual: <b>No</b>   |
| Trouble Relay Tied In                         | Design: <b>Yes</b>  | Actual: <b>No</b>   |
| TANK Board Version                            | Design: <b>2.3</b>  | Actual: <b>2.3</b>  |
| TANK Board Updated to latest Software Version |                     | Actual: <b>Yes</b>  |
| TANK Board Software Version                   | Design: <b>1.69</b> | Actual: <b>1.69</b> |
| Internet Connection Type                      |                     | Actual: <b>N/A</b>  |

**TANK Fire Suppression 1 (fs1)**

**Location :** Hood #1 - Utility Cabinet Wall Mount

**Electrician**

|   |                    |                    |
|---|--------------------|--------------------|
| TANK Control Panel Wired                      | Design: <b>Yes</b> | Actual: <b>Yes</b> |
| UDS Appliance Kill Switch (if equipped) Wired | Design: <b>Yes</b> | Actual: <b>Yes</b> |
| Wall Mounted COPRE Wired to Control Panel     | Design: <b>Yes</b> | Actual: <b>Yes</b> |
| Verify Power Supply is 27.5VDC                |                    | Actual: <b>Yes</b> |

### Fire System Contractor w/CAS Supervision

|  |                     |                        |
|--|---------------------|------------------------|
| Verify kitchen line up with drawings in NOLA?  |                     | Actual: <b>Correct</b> |
| Are all overlapping nozzles within 35-50" of cooking surface?  | Design: <b>Yes</b>  | Actual: <b>Yes</b>     |
| Nozzles Within 15" From Front/Back of Hazard Zone  | Design: <b>Yes</b>  | Actual: <b>Yes</b>     |
| Verify overlapping nozzles are located at centerline of the 30" hazard zone (front to back) same height, aimed straight down?                          | Design: <b>Yes</b>  | Actual: <b>Yes</b>     |
| Is there a Salamander or Upright Broiler Present?  |                     | Actual: <b>No</b>      |
| Does the depth of any appliance cooking surface exceed the listed size in the Appliance Coverage Detail chart?   | Design: <b>No</b>   | Actual: <b>No</b>      |
| All dedicated appliances, duct and plenum are utilizing TANK appliance nozzles (3070-3/8H-10-SS)?  | Design: <b>Yes</b>  | Actual: <b>Yes</b>     |
| Is end plenum nozzle installed 0-6" into plenum (From end of hood/hazard to center of nozzle)?   | Design: <b>Yes</b>  | Actual: <b>Yes</b>     |
| Are TANK appliance nozzles spaced no more than 12"(From end of Hazard zone to center of first nozzle and end of hazard zone to center of last nozzle)? | Design: <b>Yes</b>  | Actual: <b>Yes</b>     |
| Did the appliance lineup change from the original design?  | Design: <b>No</b>   | Actual: <b>No</b>      |
| Did the fire system appliance drops change from the original design?   | Design: <b>No</b>   | Actual: <b>No</b>      |
| Does Fire System cover a Wok?  |                     | Actual: <b>No</b>      |
| Does dedicated TANK appliance nozzle piping exceed maximum pipe length of 10 ft?   | Design: <b>No</b>   | Actual: <b>No</b>      |
| Does plenum branch piping exceed maximum pipe length of 3ft?   | Design: <b>No</b>   | Actual: <b>No</b>      |
| Does the Supply line piping to first overlapping nozzle exceed 42 ft?  | Design: <b>No</b>   | Actual: <b>No</b>      |
| Is Back-shelf a minimum of 18" Vertically off Appliance  | Design: <b>Yes</b>  | Actual: <b>Yes</b>     |
| Back-shelf Overhang less than 12"  | Design: <b>Yes</b>  | Actual: <b>Yes</b>     |
| No appliance drop has more than 2 nozzles?   | Design: <b>True</b> | Actual: <b>True</b>    |
| Is all piping except appliance drops 3/8" Blackiron, Chrome plated, Stainless Steel or 1/2" Copper?  | Design: <b>Yes</b>  | Actual: <b>Yes</b>     |
| Is all appliance drop piping 3/8" polished stainless steel or polished chrome-plated black   |                     | Actual: <b>Yes</b>     |

poned chrome plated black iron?

Are there any fryers? Actual: **Yes**

How many fryers are there? Actual: **2**

Enter Width of Fryer 1 Hazard Zone: Actual: **18**

Does Fryer 1 have 30" coverage? Design: **Yes** Actual: **Yes**

Enter Width of Fryer 2 Hazard Zone: Actual: **18**

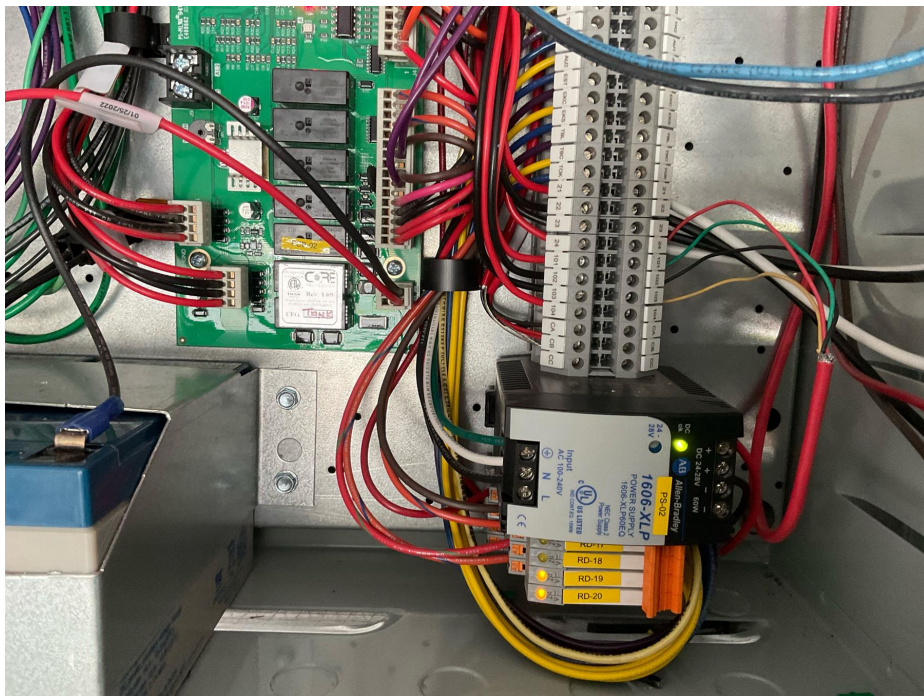
Does Fryer 2 have 30" coverage? Design: **Yes** Actual: **Yes**

Are there any Tilt Skillets? Actual: **No**

Is Manual Activation Device Wired into a Fire Loop (Must be 4 wire, in conduit)? Upload a picture of wiring connection of manual activation device. Design: **Yes** Actual: **Yes**

**Other Notes:**

N/A



MAD Installed 10'-20' from Hood at a Point of Egress and 42"-48" AFF Design: **Yes** Actual: **Yes**

Extra Fire Stat Added Design: **Yes** Actual: **Yes**

**Other Notes:**

N/A





**Other Notes:**

*This fire stat has not been wired and not tied into our electrical panel*

Fire stats are wired in a fire loop with 842 degree high temp wire when ran on top of hoods

Design: **Yes**

Actual: **Yes**

CAS Service Supervised, Assisted or Wired All Supervised Loop Connections

Actual: **Supervised**

Total amount of FP's used

Design: **38**

Actual: **38**

**CAS Service**

Verify the correct Fire Stat is installed?

Actual: **360**

Have all shipping covers been removed from fire stats

Design: **Yes**

Actual: **Yes**

Testing of TANK system completed or being completed by:

Actual: **3rd Party Distributor**

Battery Date Code (The actual date FST wrote on batteries with paint pen during SDV)

Actual: **3/27/2024 5:39:00 PM**

Verify the correct amount of TANK appliance nozzles cover the cross-sectional Perimeter or Diameter of the Duct Riser? (If 0 - 75" perimeter equals 1 nozzles, 75 - 150" 2 nozzles, above 150" 3 nozzles)

Design: **Yes**

Actual: **Yes**

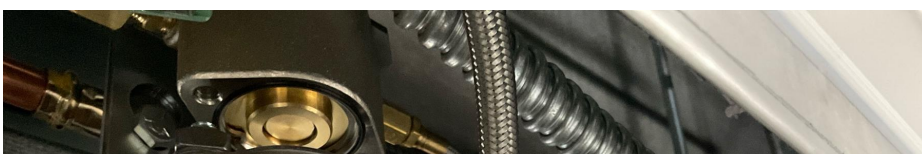
Is the system commissioned with the actuator bolted onto the TANK Fire Suppression system? Upload Picture.

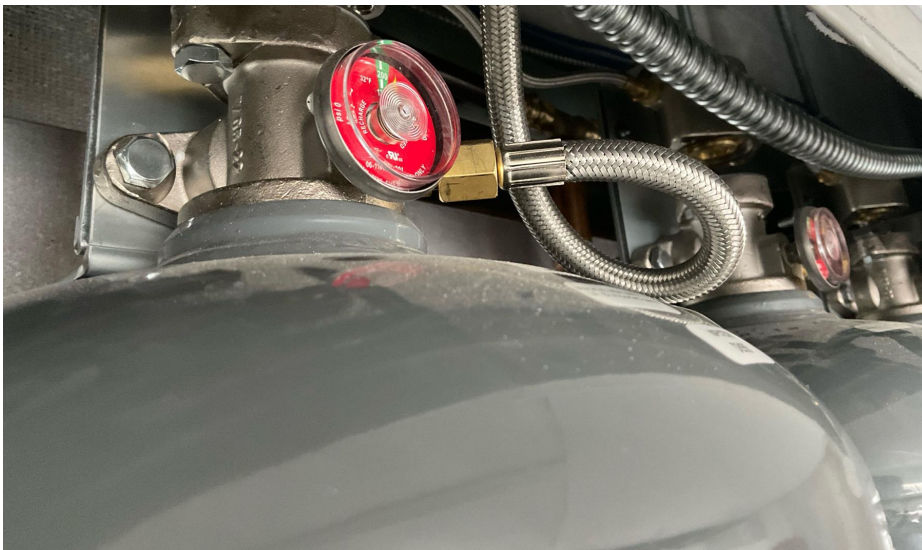
Design: **Yes**

Actual: **Yes**

**Other Notes:**

N/A





**Other Notes:**

*They have not had the final inspection yet*

Is pressure switch installed and functioning properly?

Design: **Yes**

Actual: **Yes**

CAUTION!: If pressure reads above 0.5 psi, immediately remove the primary actuator hose from the primary tank

Actual: **Ok**

Is appliance specific protection piped with adequate protection? Upload picture.

Design: **Yes**

Actual: **Yes**

**Other Notes:**

N/A



Use coil liquid leak detector around PAK and braided hose to check for leaks. Are there any leaks present?

Design: **No**

Actual: **Yes**

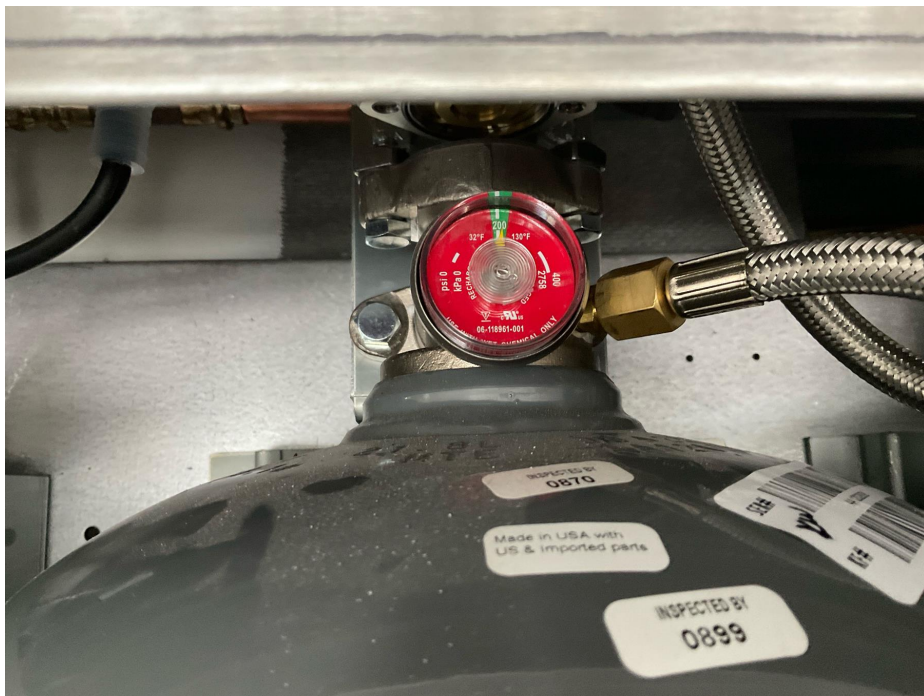
Do TANK bottles have 200 PSI with gauges functioning properly? Upload picture

Design: **Yes**

Actual: **Yes**

**Other Notes:**

N/A



|  |                    |                    |
|--|--------------------|--------------------|
| Do all nozzles have metal caps?  | Design: <b>Yes</b> | Actual: <b>Yes</b> |
| Verify Nozzle Flow Points/Tank Capabilities. Does Nozzles FP exceed Tank Capacity? | Design: <b>No</b>  | Actual: <b>No</b>  |
| Take a photo of Fire System Tag  |                    | Actual: <b>Ok</b>  |

**Other Notes:**

*They have not had the final inspection yet*

|   |                         |                             |
|---|-------------------------|-----------------------------|
| Vent plug installed on wall mount FS distribution piping (in between tanks, aimed at door)?   | Design: <b>Yes</b>      | Actual: <b>Yes</b>          |
| Tanks installed securely with straps and mounting hardware?                                   | Design: <b>Yes</b>      | Actual: <b>Yes</b>          |
| After inspection of system, lubricate and change O-ring of primary actuator hose (p/n 19020). | Design: <b>Replaced</b> | Actual: <b>Not Replaced</b> |

**Other Notes:**

*They have not had the final inspection yet*

|  |                    |                    |
|--|--------------------|--------------------|
| All Faults Are Cleared   | Design: <b>Yes</b> | Actual: <b>Yes</b> |
| Are DIP switches set correctly according to number of Fire Groups? | Design: <b>Yes</b> | Actual: <b>Yes</b> |
| Is TANK system located/mounted in a climate-controlled area?       | Design: <b>Yes</b> | Actual: <b>Yes</b> |

**PCU Installations**

NONE

**PCU Installations**

NONE

**AQEs**

NONE

**UDS**

NONE