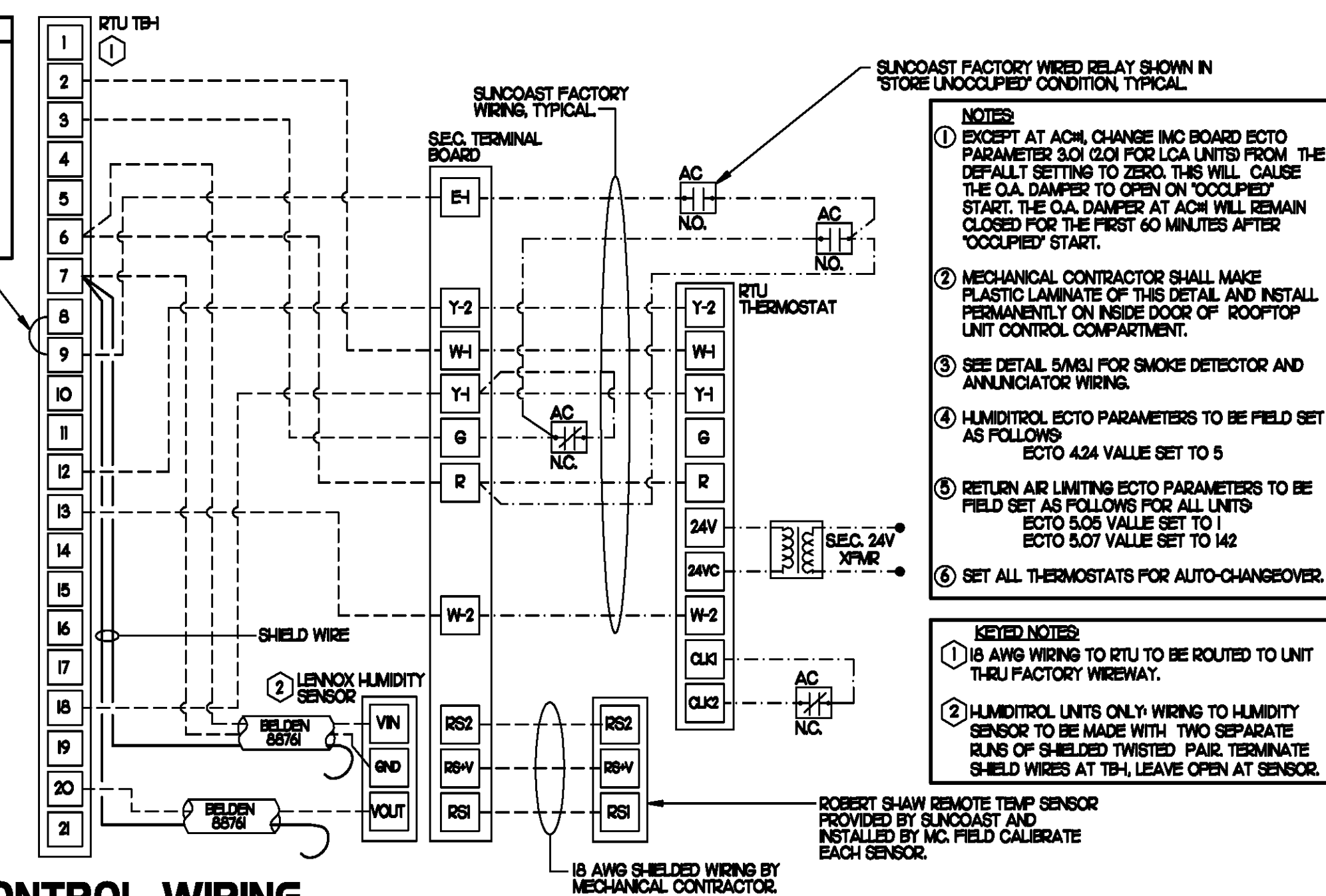


LEGEND			
A-12-400	TYPE - NECK SIZE - CFM	EF#1	EXHAUST FAN #1 (TYP)
	SPIN-IN FITTING WITH MANUAL BALANCING DAMPER, WITHOUT SCOOP	ACH#1	AIR CONDITIONING UNIT #1 (TYP)
	SPIN-IN HARD ϕ		RETURN/EXHAUST (TYP)
	SPIN-IN FLEXIBLE ϕ		SUPPLY DIFFUSER, SQ FACE (TYP)
	REMOTE TEMPERATURE SENSOR		PLAN NOTE REFERENCE
	HUMIDITY SENSOR		MANUAL VOLUME DAMPER
	SMOKE DETECTOR		DIRECTION OF THROW ON DIFFUSER
12X18	DUCT SIZE 1ST NUMBER - HORIZONTAL DIMENSION 2ND NUMBER - VERTICAL DIMENSION		

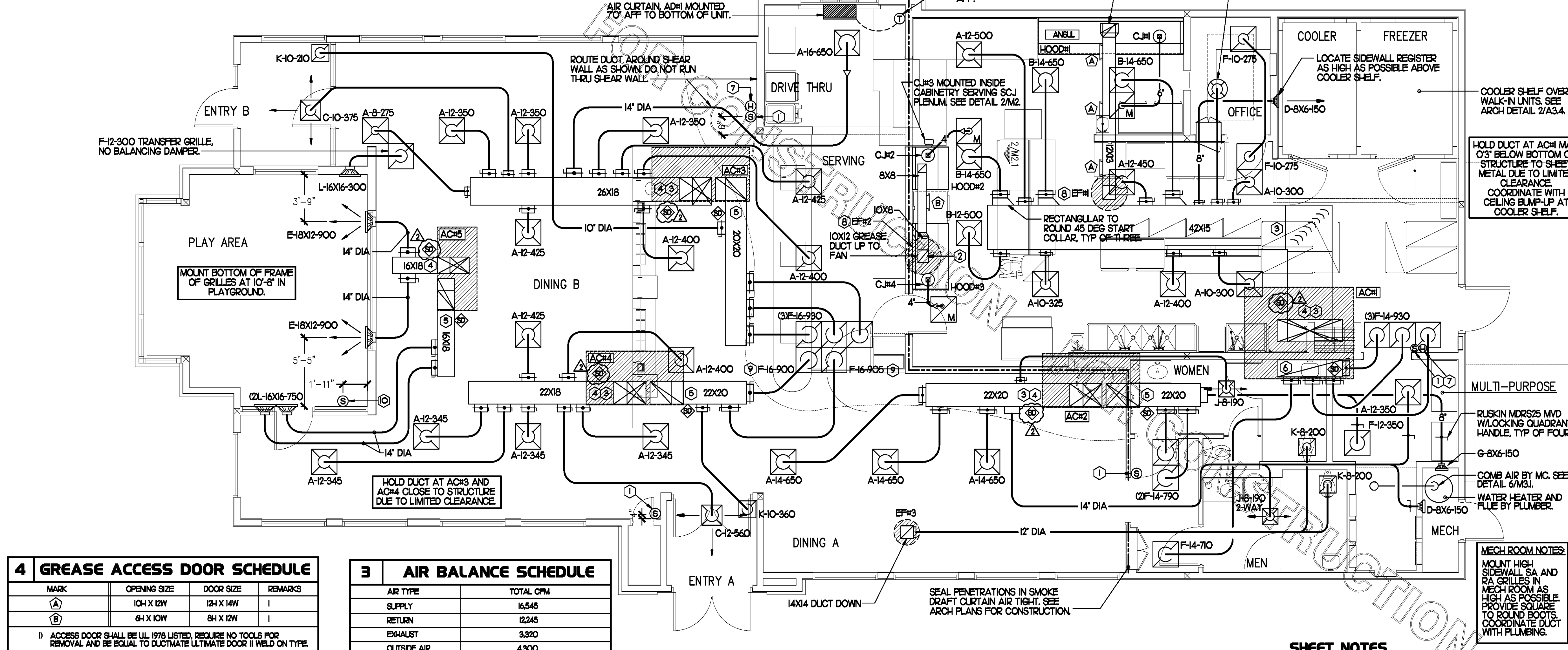
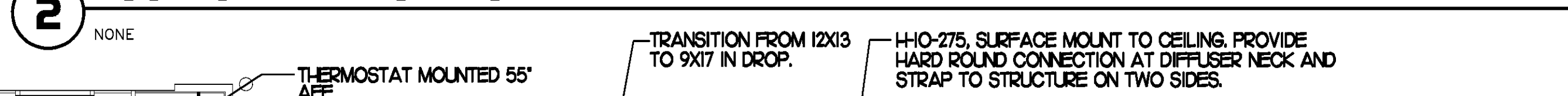
KEY NOTES

- MOUNT REMOTE SENSOR ON WALL AT 5'-0" AFF AND ROUTE WIRING BACK TO SUNCOAST TEMP CONTROL PANEL.
- 6X8 CONNECTION TO HOOD#3 WITH HALTON KED EQUALIZER IN RISER. SEE DWG M21 FOR MORE INFORMATION.
- BRANCH TAKE-OFFS ARE NOT TO BE LOCATED CLOSER THAN 3'-0" FROM ANY ELBOW INCLUDING THE SUPPLY AIR DROP FROM CURB.
- TRANSITION IN VERTICAL DROP FROM FULL SIZE OF CURB OPENING TO SIZE SHOWN. PROVIDE TURNING VANES IN ELBOW.
- TRANSITION IN VERTICAL DROP FROM FULL SIZE OF CURB OPENING TO SIZE SHOWN. NO TURNING VANES IN ELBOW.
- R/A DUCT DROP TO BE FULL SIZE OF CURB CONNECTION. TERMINATE DROP 0'-5" ABOVE CEILING.
- MOUNT LEVNOX HUMIDITY SENSOR ON WALL ABOVE SPACE TEMP SENSOR AND ROUTE WIRING TO UNIT ON ROOF.
- EF#1 AND EF#2 MUST BE LOCATED A MINIMUM OF 10 FT FROM PARAPETS.
- INSULATION ON DUCT DROP THROUGH UPPER CEILING TO STOP AT UPPER CEILING PENETRATION. SAND/DEGREASE GALVANIZED SHEET METAL AND PAINT FLAT WHITE. CEILING TILE AT UPPER CEILING TO BE CUT TO FIT AROUND DUCT DROP.
- MOUNT REMOTE SENSOR FOR PLAYGROUND 10'-4" AFF. ROUTE WIRING BACK TO SUNCOAST TEMP CONTROL PANEL.

LEGEND	
SEC.	SUNCOAST ENVIRONMENTAL CONTROLS C7A-500 ENERGY MGT PANEL
AC	SUNCOAST FACTORY INSTALLED AND WIRED A/C RELAY, ENERGIZED BY PUTTING STORE SWITCH IN 'STORE OCCUPIED' POSITION
	18 GA. WIRING BY CONTRACTOR
	RTU FACTORY WIRING
	SEC. FACTORY WIRING



2 ROOFTOP UNIT CONTROL WIRING



4 GREASE ACCESS DOOR SCHEDULE			
MARK	OPENING SIZE	DOOR SIZE	REMARKS
A	104 X 12W	124 X 14W	I
B	64 X 10W	84 X 12W	I

D ACCESS DOOR SHALL BE UL 1978 LISTED, REQUIRE NO TOOLS FOR REMOVAL AND BE EQUAL TO DUCTMATE ULTIMATE DOOR II WELD ON TYPE.

3 AIR BALANCE SCHEDULE	
AIR TYPE	TOTAL CFM
SUPPLY	16,545
RETURN	12,245
EXHAUST	3,320
OUTSIDE AIR	4,300
BUILDING POSITIVE PRESSURE	980

1 MECHANICAL FLOOR PLAN

1/4"=1'-0"

SHEET NOTES

- DUCT SIZES SERVING DIFFUSERS AND GRILLES ARE SAME SIZE AS DIFFUSER OR GRILLE NECK UNLESS NOTED OTHERWISE.

5200 Buffington Rd.
Atlanta Georgia,
30349-2998

Revisions:
Mark Date By
01-09-09
COUNTY COMMENTS

Mark Date By
Mark Date By

Seal

AA 004920
CA 8660
933 LEE ROAD, FIRST FLOOR
ORLANDO, FLORIDA 32810
PH 407.646.6008
FX 407.650.9124

INTERPLAN
ARCHITECTURE
ENGINEERING
INTERIOR DESIGN
PROJECT MANAGEMENT

STORE
VIERA
FSU S06 C

8300 N. WICKHAM
ROAD,
MELBOURNE, FL
32940.

SHEET TITLE
MECHANICAL
FLOOR PLAN

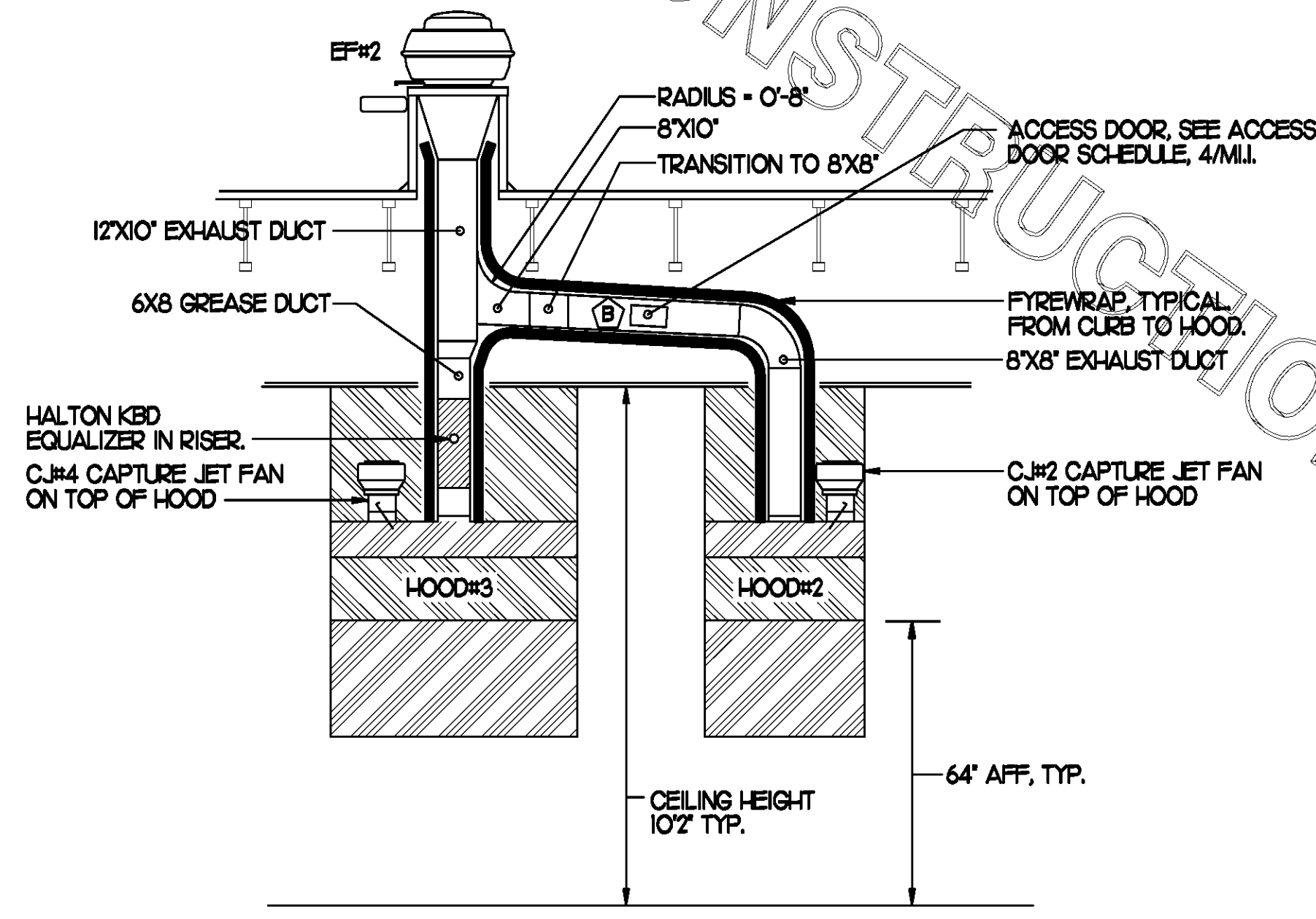
DWG EDITION 07.1
REVISION

Job No. : 08.0396
Store : 2106
Date : 10-15-08
Drawn By :
Checked By :
Sheet

M-II

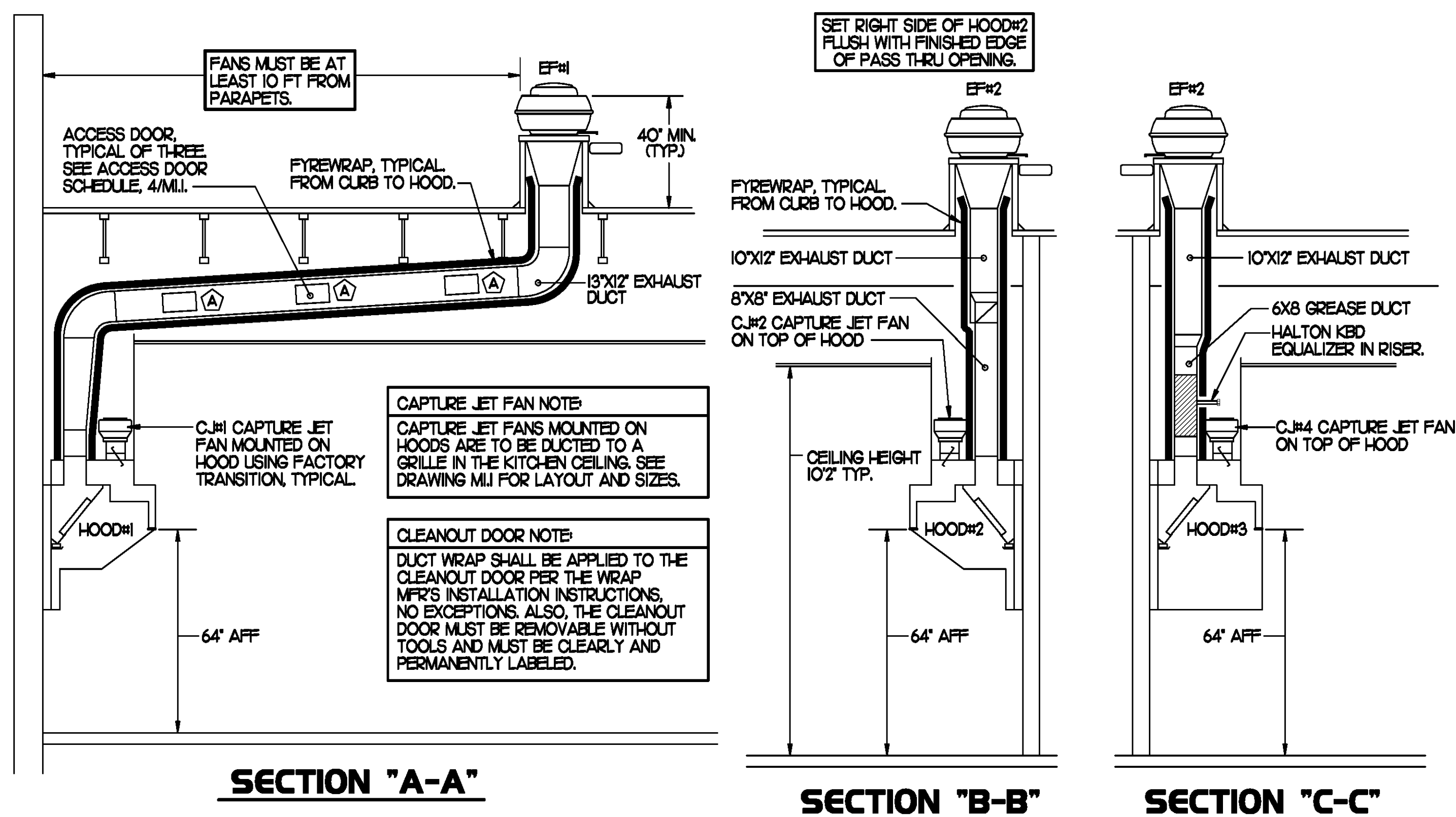
6 KITCHEN HOOD SYSTEMS NOTES

- CHICK-FIL-A MAINTAINS A NATIONAL ACCOUNT WITH HALTON CO. FOR THE HOODS. CHICK-FIL-A WILL PURCHASE AND PROVIDE THE HOODS FOR INSTALLATION BY THE MECHANICAL CONTRACTOR. THE MECHANICAL CONTRACTOR SHALL BE RESPONSIBLE FOR RECEIVING THE HOODS. CONTACT HALTON CO. AT 270-237-5600 FOR MORE INFO.
- THE FIRE SUPPRESSION SYSTEM SHALL CONSIST OF A COMPLETE WET ANSUL SYSTEM FURNISHED BY HALTON. THE HOOD SHALL BE FURNISHED PRE-PIPED BY HALTON.
- THE R-102 ANSUL FIRE SUPPRESSION SYSTEM EXTERNAL TO THE HOODS SHALL BE INSTALLED IN ACCORDANCE WITH HOOD MANUFACTURER'S SHOP DRAWINGS BY AN AUTHORIZED ANSUL SYSTEM INSTALLER HIRED BY HALTON.
- HOOD EXHAUST DUCTWORK SHALL BE 16 GA. BLACK STEEL WITH CONTINUOUS LIQUID TIGHT WELD OF JOINTS & SEAMS.
- TURNS IN GREASE EXHAUST DUCTWORK SHALL BE LONG RADIUS TYPE, WITH A CENTERLINE RADIUS R-3W/2, NO EXCEPTIONS ALLOWED. NO MITERED FITTINGS ALLOWED.
- ALL STAINLESS STEEL CLOSURE PANELS SHALL BE SUPPLIED BY HOOD MANUFACTURER AND INSTALLED BY THE MECHANICAL CONTRACTOR ACCORDING TO MANUFACTURER'S RECOMMENDATIONS.
- SLOPE ALL GREASE EXHAUST DUCT BACK TO HOOD AT 1/4" PER FOOT OF RUN.
- WRAP NEW GREASE DUCT WITH UNIFRAX FYREWRAP. ACCESS DOORS SHALL BE INSTALLED ACCORDING TO MANUFACTURER'S INSTALLATION RECOMMENDATIONS. FYREWRAP PRODUCT USED SHALL MEET LOCAL CODE REQUIREMENTS.
- SUPPORT HOODS WITH THREADED ROD AT EACH FACTORY SUPPORT POINT. EACH SUPPORT POINT MUST SUPPORT THE HOOD WEIGHT EQUALLY. ATTACH TO STRUCTURE AS DETAILED ON STRUCTURAL DRAWING 55-1.



4 HOOD ELEVATION SECTION "D-D"

NONE



3 HOOD ELEVATIONS

NONE

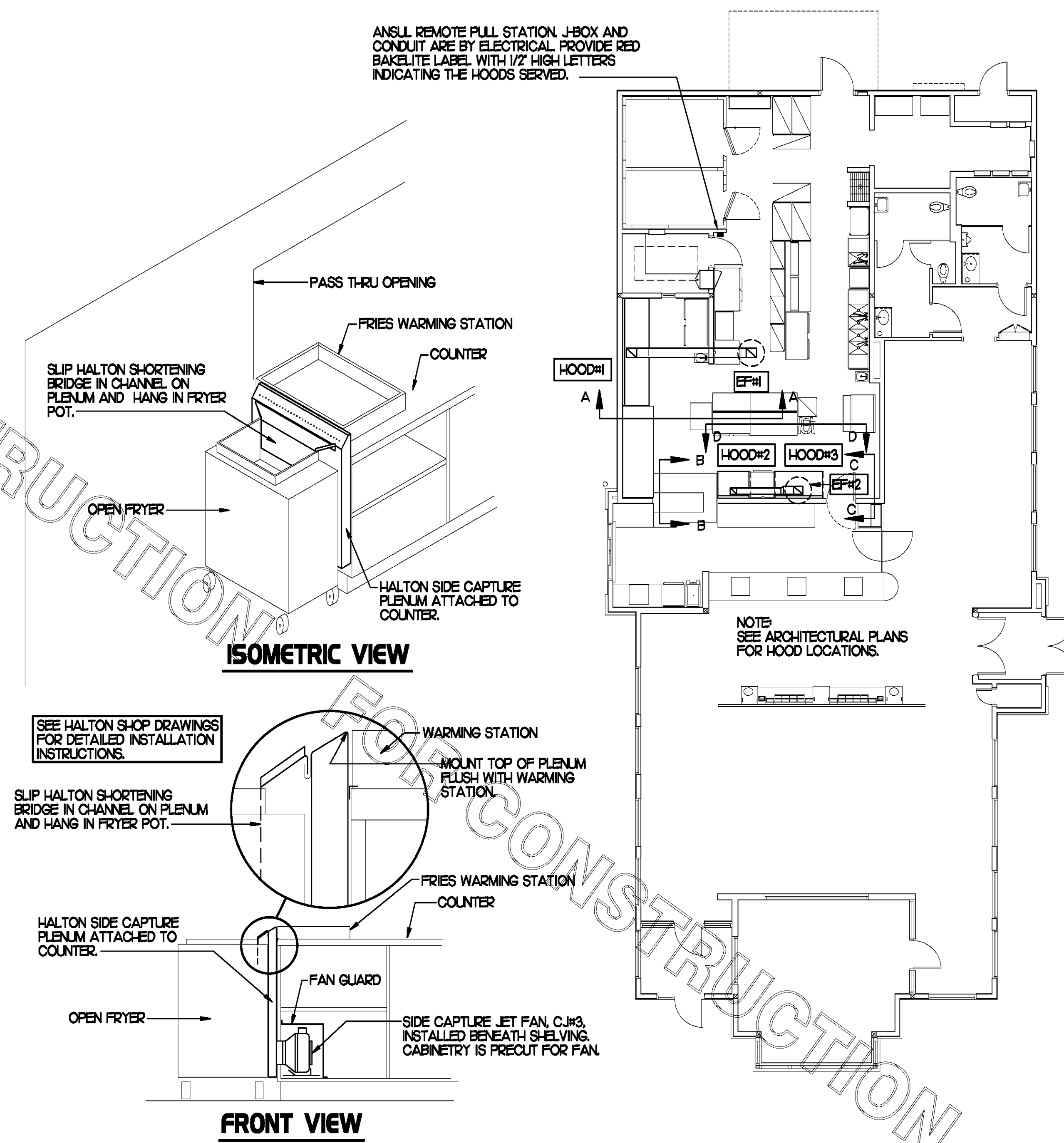
5 HOOD SCHEDULE

MARK	EXHAUST CFM	SP • TAB PORT	CAPTURE JET CFM & SP.	TYPE	COLLAR SIZE	WIDTH	DEPTH	HEIGHT	MANUFACTURER	MODEL	REMARKS
HOOD#1	1,700	0.20"	100 • 0.30"	BACK SHELF	9'X7"	136.5"	34"	48"	HALTON	KVL	12,3,4,5,6,7,9,10,15
HOOD#2	700	0.27"	30 • 0.30"	BACK SHELF	8'X8"	40"	34"	48"	HALTON	KVL	12,4,5,8,10,11,14
HOOD#3	520	0.07"	30 • 0.30"	BACK SHELF	8'X8"	62"	34"	48"	HALTON	KVL	12,4,5,10,12,13,14,15

NOTES: DIMENSIONS OF HOODS INCLUDE BACK AND SIDE SPACERS (HEIGHT DOES NOT INCLUDE CLOSURE PANELS).

REMARKS:

- 1) STAINLESS STEEL CONSTRUCTION.
- 2) PROVIDE FULL HEIGHT SS CLOSURE PANEL WITH ACCESS PANEL IN FRONT LARGE ENOUGH TO REMOVE CAPTURE JET FAN.
- 3) PROVIDE FULL HEIGHT SS CLOSURE PANEL WITH ACCESS PANEL IN FRONT LARGE ENOUGH TO SERVICE ANSUL COMPONENTS.
- 4) PROVIDE PRE-PIPED ANSUL R-102 WET FIRE EXTINGUISHING SYSTEM.
- 5) PROVIDE 3" BACK SPACER.
- 6) PROVIDE 3" RIGHT SIDE SPACER.
- 7) PROVIDE NOTCHED LEFT END SIDE PANEL.
- 8) PROVIDE NOTCHED RIGHT END SIDE PANEL.
- 9) ANSUL CABINET AND COMPONENTS ON LEFT SIDE ABOVE HOOD.
- 10) PROVIDE TOP PLENUM CAPTURE JET FAN, SPEED CONTROLLER AND COLLAR.
- 11) PROVIDE COUNTER MOUNTED SIDE CAPTURE JET PLENUM ASSEMBLY AND FAN ON RIGHT SIDE OF HOOD.
- 12) PROVIDE HALTON KBD EQUALIZER WITH FACTORY INSTALLED 8X6 TRANSITIONS ON LEAVING CONNECTION FLANGE.
- 13) PROVIDE ACCESS PANEL IN FRONT LARGE ENOUGH TO ACCESS KBD EQUALIZER JACK SCREW.
- 14) PROVIDE FULL LEFT END PANEL EXTENDING BELOW TOP OF COOKING SURFACE.
- 15) PROVIDE FULL RIGHT END PANEL EXTENDING BELOW TOP OF COOKING SURFACE.

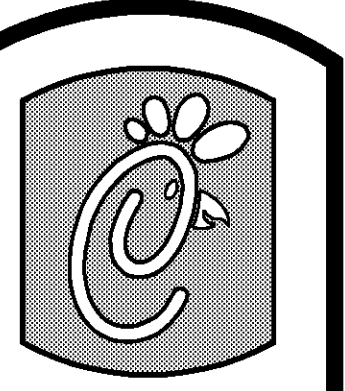


2 HALTON SIDE CAPTURE JET PLENUM

NOT TO SCALE

1 HOOD LAYOUT

1/8"=1'-0"



Chick-fil-A

5200 Buffington Rd.
Atlanta Georgia,
30349-2998

Revisions:

Mark Date By

△

Mark Date By

△

Mark Date By

△

Seal

A1 034820
CA 8460
933 LEE ROAD, FIRST FLOOR
ORLANDO, FLORIDA 32810
PH: 407.446.8008
FX: 407.428.9124

INTERPLAN
ARCHITECTURE
ENGINEERING
INTERIOR DESIGN
PROJECT MANAGEMENT

STORE
VIERA
FSU S06 C

8300 N. WICKHAM
ROAD,
MELBOURNE, FL
32940.

SHEET TITLE
HOOD DETAILS
& SCHEDULES

DWG EDITION 07.1
REVISION

Job No. : 08.0396

Store : 2106

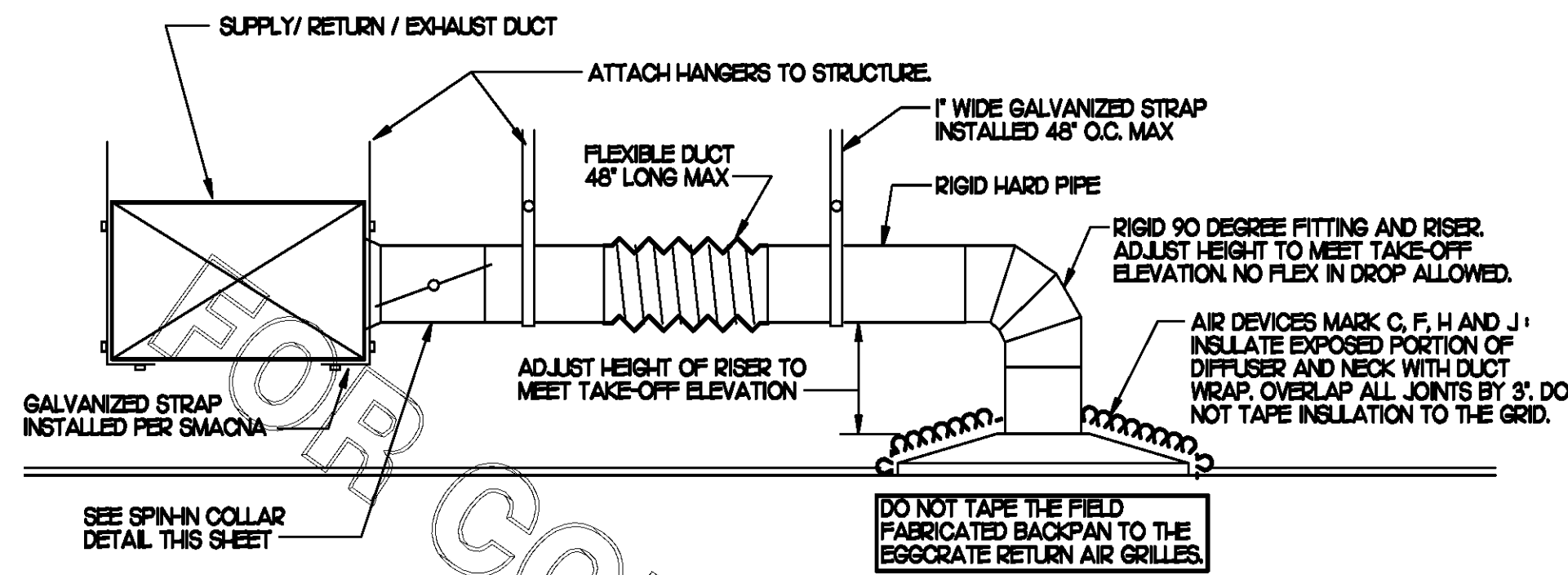
Date : 10-15-08

Drawn By : _____

Checked By : _____

Sheet

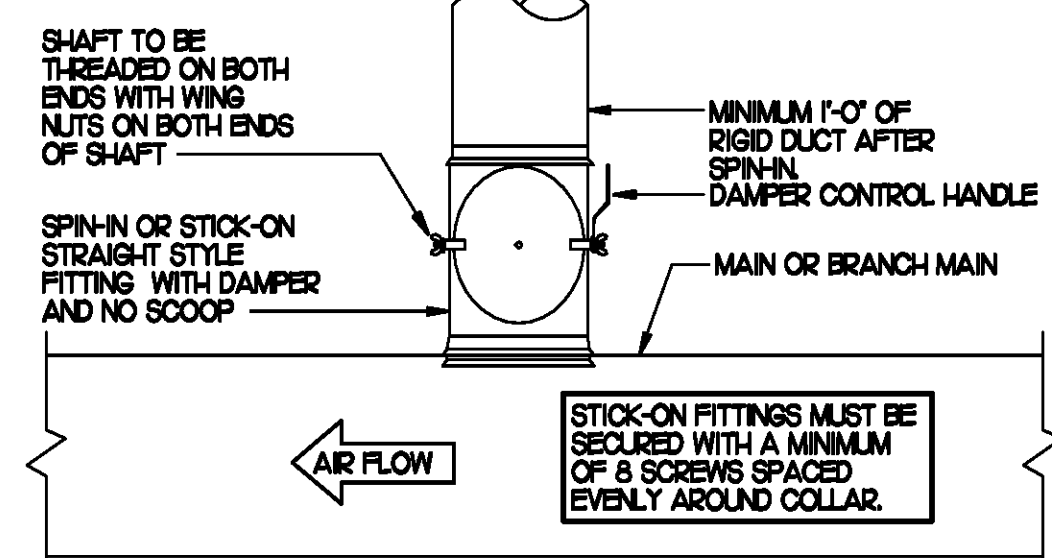
M-2.I



1 SAG/RAG/GRILLE TAKE-OFF

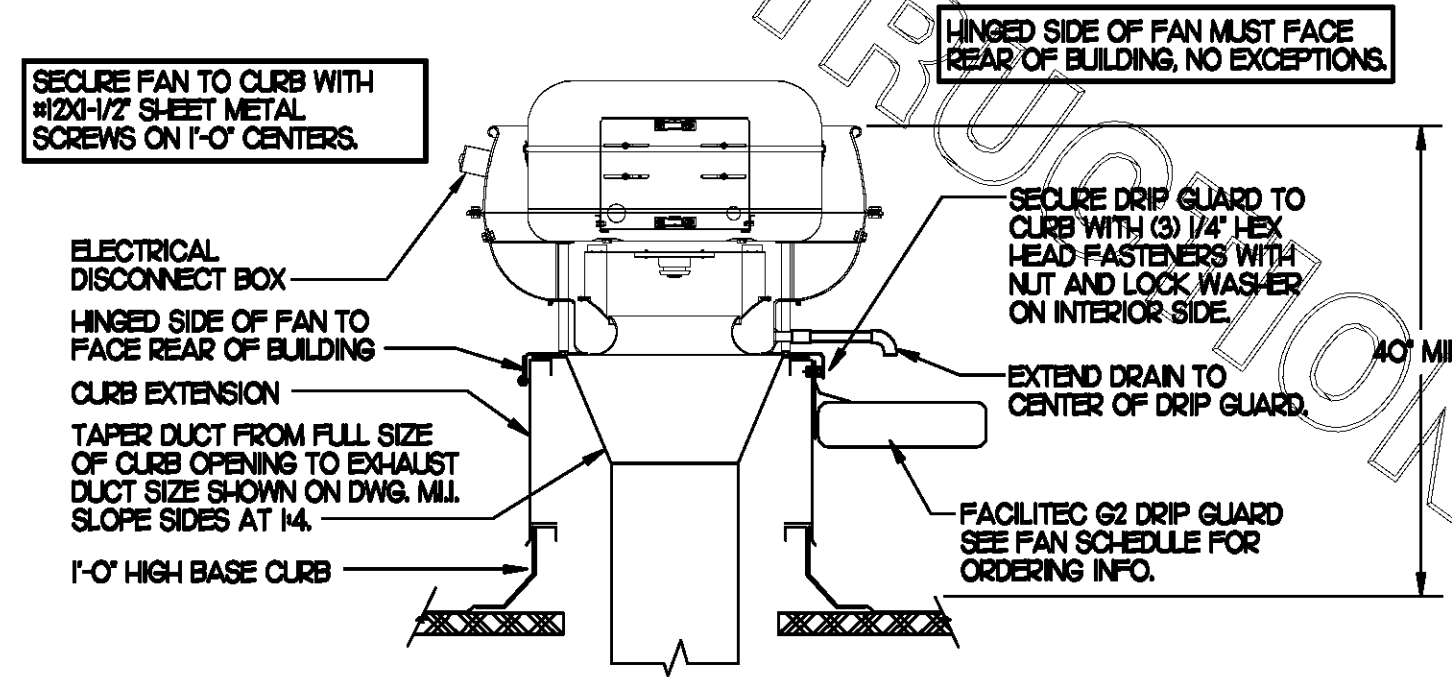
NO SCALE

DAMPER CONTROL HANDLE MUST BE LEFT EXPOSED. ATTACH A YELLOW FLUORESCENT CONSTRUCTION RIBBON TO THE HANDLE RIBBON MUST HANG 12\"/>



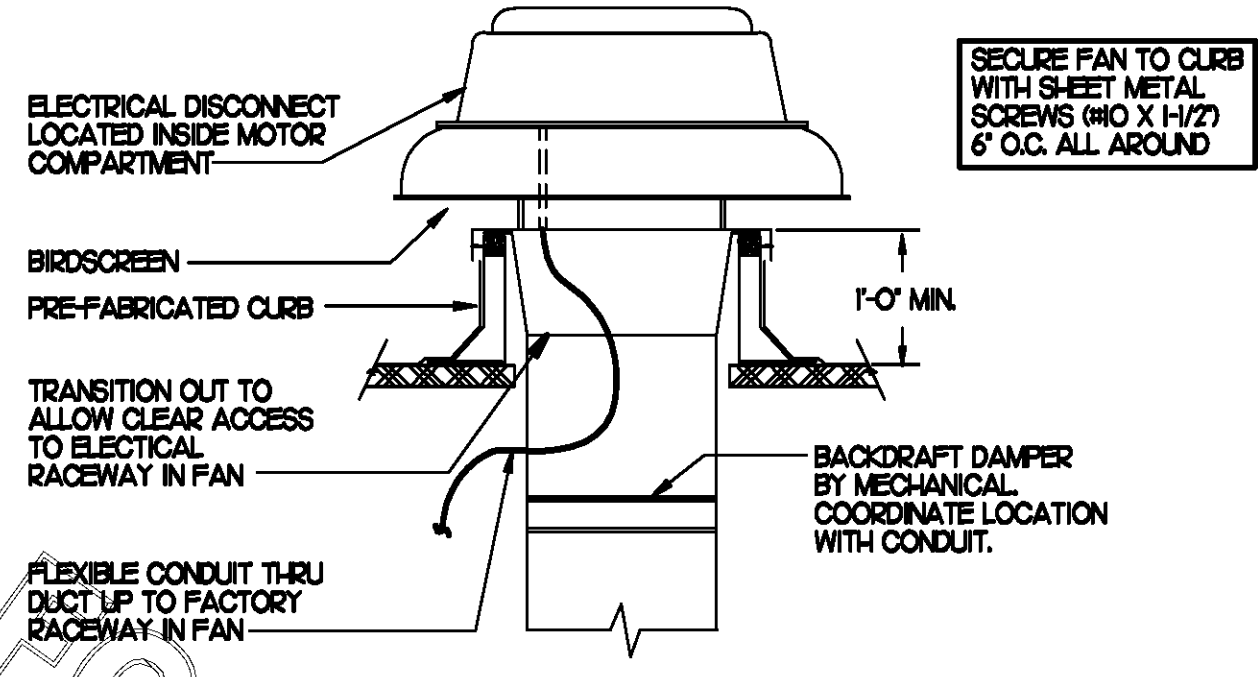
2 SPIN-IN COLLAR

NO SCALE



3 KITCHEN HOOD EXHAUST FAN

NO SCALE



4 RESTROOM EXHAUST FAN

NO SCALE

10 GAS FIRED ROOFTOP UNIT SCHEDULE										
MARK	COOLING CAPACITY (MBH)		HEATING CAPACITY (MBH)		FAN SECTION (CFM)			MODEL	MANUFACTURER	REMARKS
	TOTAL	SEN6	INPUT	OUTPUT	SUPPLY	O.A.	ESP			
ACH	1881	1354	480.0	384.0	5150	1650	5	.70	LGC80R2	LENNOX 13.5.6.9.10.12.13
ACH2	105.9	76.2	240.0	192.0	2830	750	2	.65	LGA10R2	LENNOX 23.5.6.9.10.12.14
ACH3	128.0	90.9	240.0	192.0	4000	1000	3	.65	LGA20R2	LENNOX 13.5.7.8.9.10.12.14
ACH4	93.6	67.5	240.0	192.0	2765	600	2	.65	LGA20R2	LENNOX 23.5.6.9.10.12.14
ACH5	63.9	47.3	120.0	100.0	1800	300	1.5	.65	LGA060R2	LENNOX 3.4.5.7.8.9.10.12.14

NOTES:
 * COOLING CAPACITIES ARE GROSS, BASED ON INDOOR 80°FDB/67°FWB, OUTDOOR 98°FDB, AND 400 CFM PER TON.
 * CHICK-FIL-A MAINTAINS A NATIONAL ACCOUNT FOR EQUIPMENT WITH LENNOX CORPORATION. CONTACT LENNOX NATIONAL ACCOUNTS AT 972-497-6260 (OR BY FAX AT 972-497-5112) FOR PRICING, ORDERING AND AVAILABILITY.

REMARKS:
 1) PROVIDE DIFFERENTIAL ENTHALPY ECONOMIZER WITH POWER EXHAUST.
 2) PROVIDE DIFFERENTIAL ENTHALPY ECONOMIZER WITH BAROMETRIC EXHAUST.
 3) PROVIDE 14\"/>

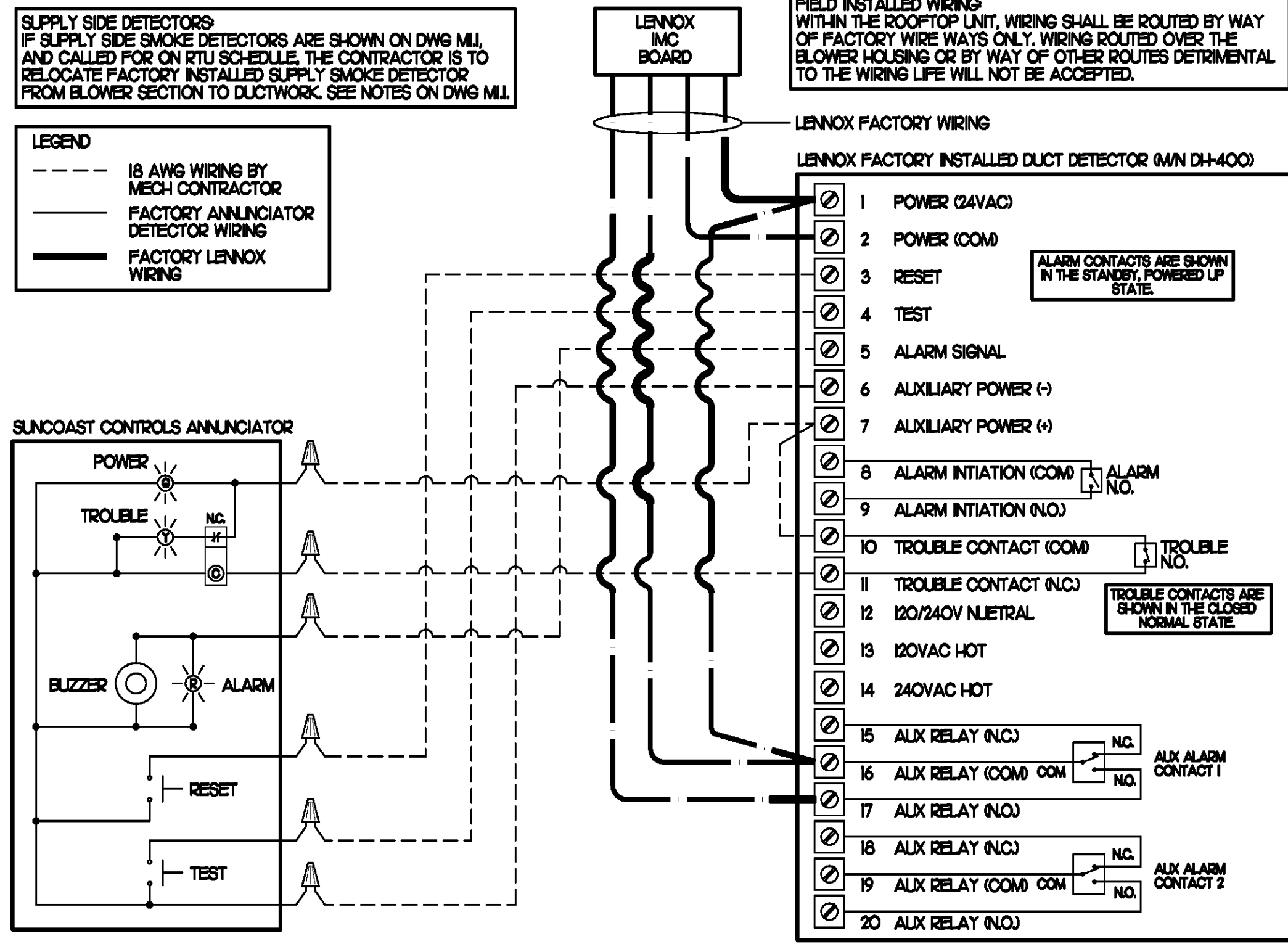
9 EXHAUST FAN SCHEDULE									
MARK	CFM	ESP	RPM	TP SPEED (RPM)	IP	AREA SERVED	MODEL	MANUFACTURER	REMARKS
EF#1	1700	3/4	1463	4644	1/2	HOOD#	1E0VEB	LOREN COOK	123.4.5.6.12
EF#2	1220	3/4	1586	6228	1/2	HOOD#2 & HOOD#3	1E0V4EB	LOREN COOK	123.4.5.6.12
EF#3	400	3/8	1429	3418	1/8	RESTROOMS	ACED-90C8DH	LOREN COOK	27.8.9.10.12

NOTES:
 GREASE EXHAUST FAN RPM BASED ON 80 DEGREE F AIR AT 1000 FEET ABOVE SEA LEVEL.

REMARKS:
 1) PROVIDE FACTORY 1\"/>

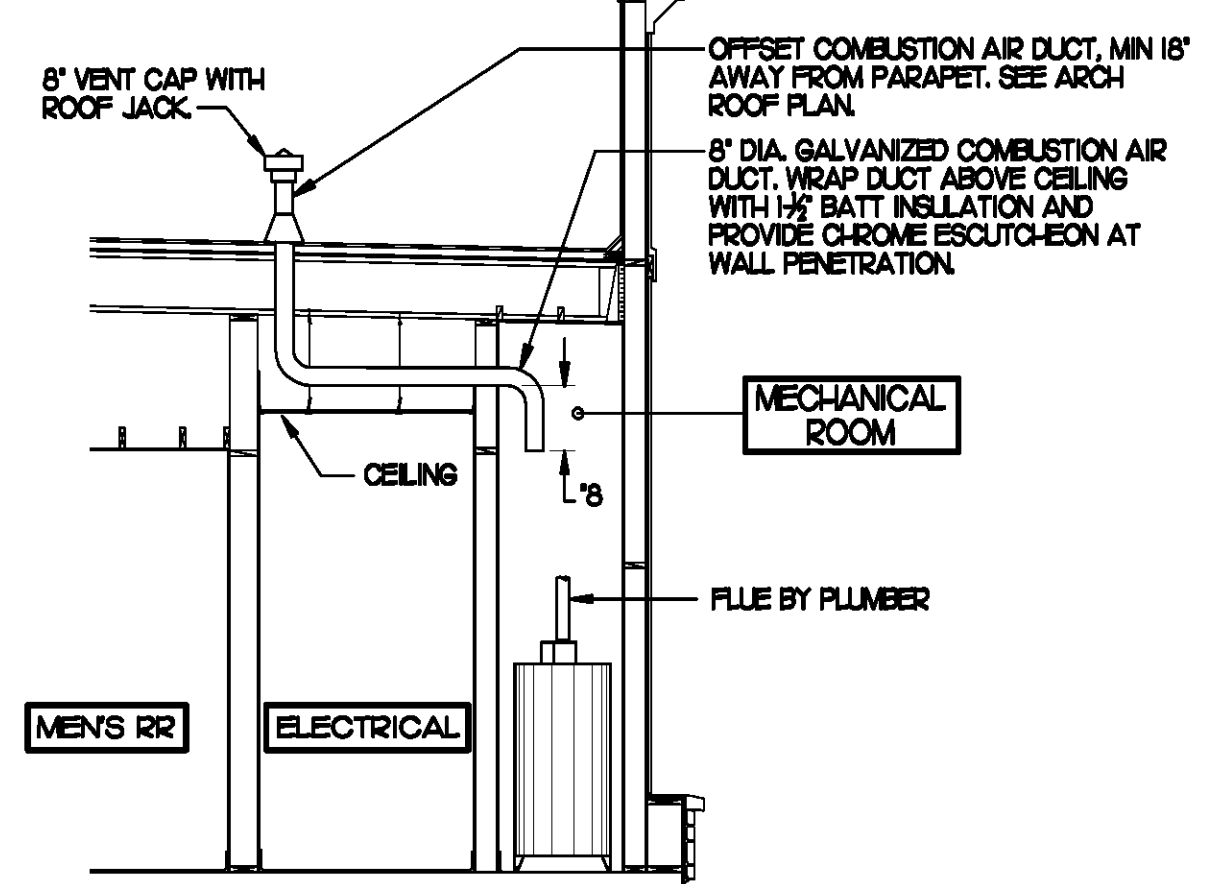
8 AIR DEVICE SCHEDULE							
MARK	DESCRIPTION	LOCATION	NECK SIZE	FACE SIZE	FRAME TYPE	REMARKS	
A	TITUS MODEL PSS-AA ALUMINUM SUPPLY AIR DIFFUSER WITH AIR PATTERN CONTROLLER.	DINING AREA KITCHEN	SEE PLAN	24X24	LAY-IN	1.8.9	
B	TITUS MODEL PAR-AA ALUMINUM RETURN AIR GRILLE USED AS A SUPPLY DIFFUSER.	KITCHEN	SEE PLAN	24X24	LAY-IN	1.8.9	
C	TITUS MODEL MCD STEEL SUPPLY AIR DIFFUSER FIELD ADJUSTABLE AIR PATTERN CONTROLLERS.	ENTRY 'A' ENTRY 'B'	14X14	18X9	SURFACE	1.5.7.9	
D	TITUS MODEL 272FS DOUBLE DEFLECTION ALUMINUM SIDEWALL SUPPLY GRILLE FRONT BLADE PARALLEL TO SHORT SIDE.	MECHANICAL ROOM MEZZANINE	8X6	10X8	SURFACE	1.9	
E	TITUS MODEL 272FL DOUBLE DEFLECTION ALUMINUM SIDEWALL SUPPLY GRILLE FRONT BLADE PARALLEL TO LONG SIDE.	PLAYGROUND	18X12	20X14	SURFACE	1.9	
F	DONCO MODEL C7DF EGGRATE RETURN AIR GRILLE WITH REMOVABLE WHITE CORE, FACTORY FLAT BACKPAN AND ROUND NECK.	DINING/OFFICE KITCHEN	SEE PLAN	24X24	LAY-IN	1.7.9	
G	TITUS MODEL 56FL ALUMINUM SIDEWALL RETURN GRILLE, FRONT BLADE PARALLEL TO LONG SIDE.	MECHANICAL ROOM	8X6	10X8	SURFACE	1.9	
H	TITUS MODEL TMR-AA ALUMINUM CONCENTRIC ROUND CONE SUPPLY DIFFUSER.	OFFICE	10	18	LAY-IN	1.6.7.9	
J	TITUS MODEL MCD STEEL SUPPLY AIR DIFFUSER FIELD ADJUSTABLE AIR PATTERN CONTROLLERS.	RESTROOMS	10X10	15X15	SURFACE	1.2.3.5.7.9	
K	TITUS MODEL PAR STEEL PERFORATED FACE RETURN AIR GRILLE WITH OGD.	RESTROOMS ENTRY 'A' & 'B'	14X14	18X6	SURFACE	1.4.9	
L	TITUS MODEL 56FL ZERO DEGREE DEFLECTION ALUMINUM SIDEWALL RETURN GRILLE FRONT BLADE PARALLEL TO LONG SIDE.	PLAYGROUND	16X6	18X8	SURFACE	1.9	
M	TITUS MODEL PAR-AA ALUMINUM RETURN AIR GRILLE	KITCHEN	6	24X24	LAY-IN	1.9	

REMARKS:
 1) STANDARD OFF-WHITE FINISH.
 2) PROVIDE MODEL AG-95 NECK DAMPER.
 3) SEE DRAWING 1M FOR 7\"/>



5 SMOKE DETECTOR AND ANNUCIATOR WIRING DIAGRAM

NO SCALE

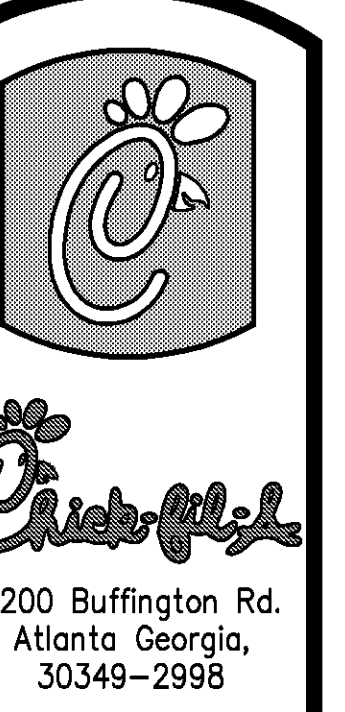


6 WATER HEATER VENT/C.A. ROUTING

NO SCALE

7 AIR DOOR SCHEDULE									
MARK	CFM	VELOCITY	HEATING CAP	IP	AREA SERVED	MODEL	MANUFACTURER	REMARKS	
AD#1	750	3.060	72 KW	1/5	DRIVE THRU	MP-30E	POWERED-AIRE	1.2.3	

REMARKS:
 1) FACTORY PROVIDED REMOTE MOUNTED HEAT/OVALUVE CONTROLS.
 2) FACTORY PROVIDED UNIT MOUNTED SPEED CONTROLLER.
 3) CHICK-FIL-A HAS A NATIONAL ACCOUNT WITH TOM BARRROW COMPANY FOR THE AIR DOOR. THE MECHANICAL CONTRACTOR SHALL PURCHASE THE AIR DOOR DIRECTLY FROM TOM BARRROW COMPANY. CONTACT MR. SCOTT GEORGE AT 404-351-0101, FOR PRICING AND AVAILABILITY. AN AIR DOOR NOT PURCHASED THRU TOM BARRROW COMPANY WILL NOT BE ACCEPTED.



Revisions:
 Mark Date By
 01-09-09 COUNTY COMMENTS

Mark Date By

Mark Date By

Seal

AA 004820
 CA 8660
 933 LEE ROAD, FIRST FLOOR
 ORLANDO, FLORIDA 32810
 PH: 407.646.9008
 FX: 407.659.9124

INTERPLAN
 ARCHITECTURE
 ENGINEERING
 INTERIOR DESIGN
 PROJECT MANAGEMENT

STORE
 VIERA
 FSU S06 C

8300 N. WICKHAM ROAD,
 MELBOURNE, FL 32940.

SHEET TITLE
 HVAC DETAILS & SCHEDULES

DWG EDITION 07.1
 REVISION

Job No. : 08.0396
 Store : 2106
 Date : 10-15-08
 Drawn By :
 Checked By :
 Sheet

M-3.I

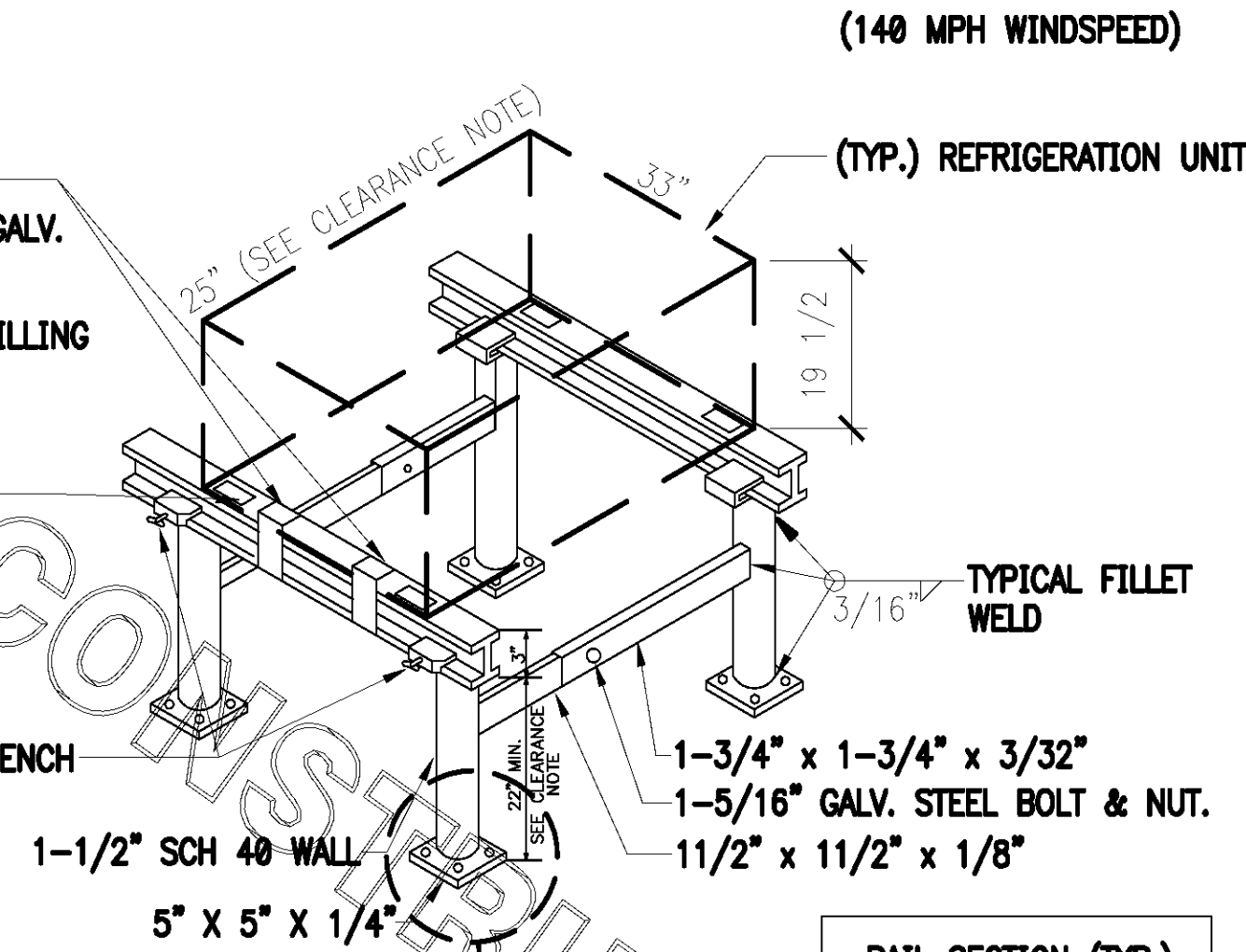
PROVIDE 4-22 GA.- 1 1/8" WIDE HURRICANE STRAPS PER A/C UNIT.
 A.) 2-3/8" X 3/4" LONG A307 STEEL GALV. BOLTS AND NUTS FASTENED TO WEB OF ALUMINUM STAND RAIL.
 B.) 3-10-16 X 3/4" HWH #3 SELF DRILLING HILTI KWIK-FLEX SCREWS TO WEB OF ALUMINUM STAND RAIL.

PAD (TYP.) BY A/C CONTRACTOR
 EXAMPLES :
 RUBBER VIBRATION PAD (RP. 3/4" - 2"x2")
 (RP. 3/8" - 2"x2")

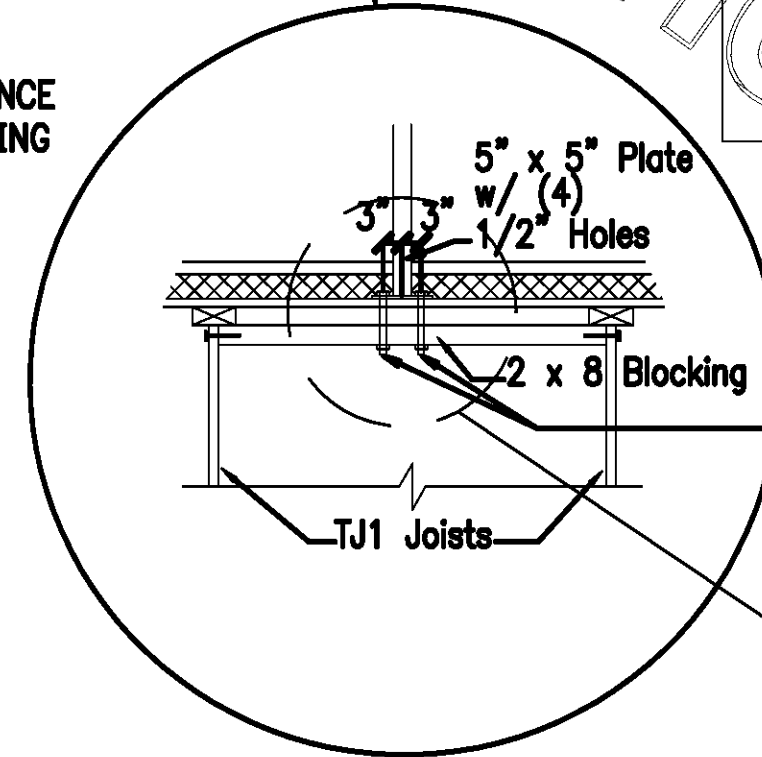
1/4" X 3/4" GALVANIZED STEEL THUMBSCREW TIGHTEN WITH TORQUE WRENCH TO REFUSAL.

NOTES:

- 1.) ALL CONSTRUCTION TO MEET ALUMINUM ASSOCIATION SPECS.
- 2.) VIBRATION INSULATOR PADS SHALL BE PROVIDED BY THE A/C CONTRACTOR SO AS NOT TO CAUSE VIBRATION TO EXISTING SUB-STRUCTURE.
- 3.) ALUMINUM EQUIPMENT STAND SUPPORTS AS MANUFACTURED BY AVCOA CORPORATION OF FORT LAUDERDALE, FLA. OR APPROVED EQUAL STANDS SHALL PROVIDE 18" MINIMUM CLEARANCE AND SHALL BE SIZED AND INSTALLED ACCORDING TO THE MANUFACTURERS LOAD CHARTS AND PRINTED INSTALLATION DETAILS. CONTACT: (800) 266-7212
- 4.) STRAP DOWN UNITS WITH 22 GAUGE STRAPS AT 4 CORNERS WITH TEK SCREWS

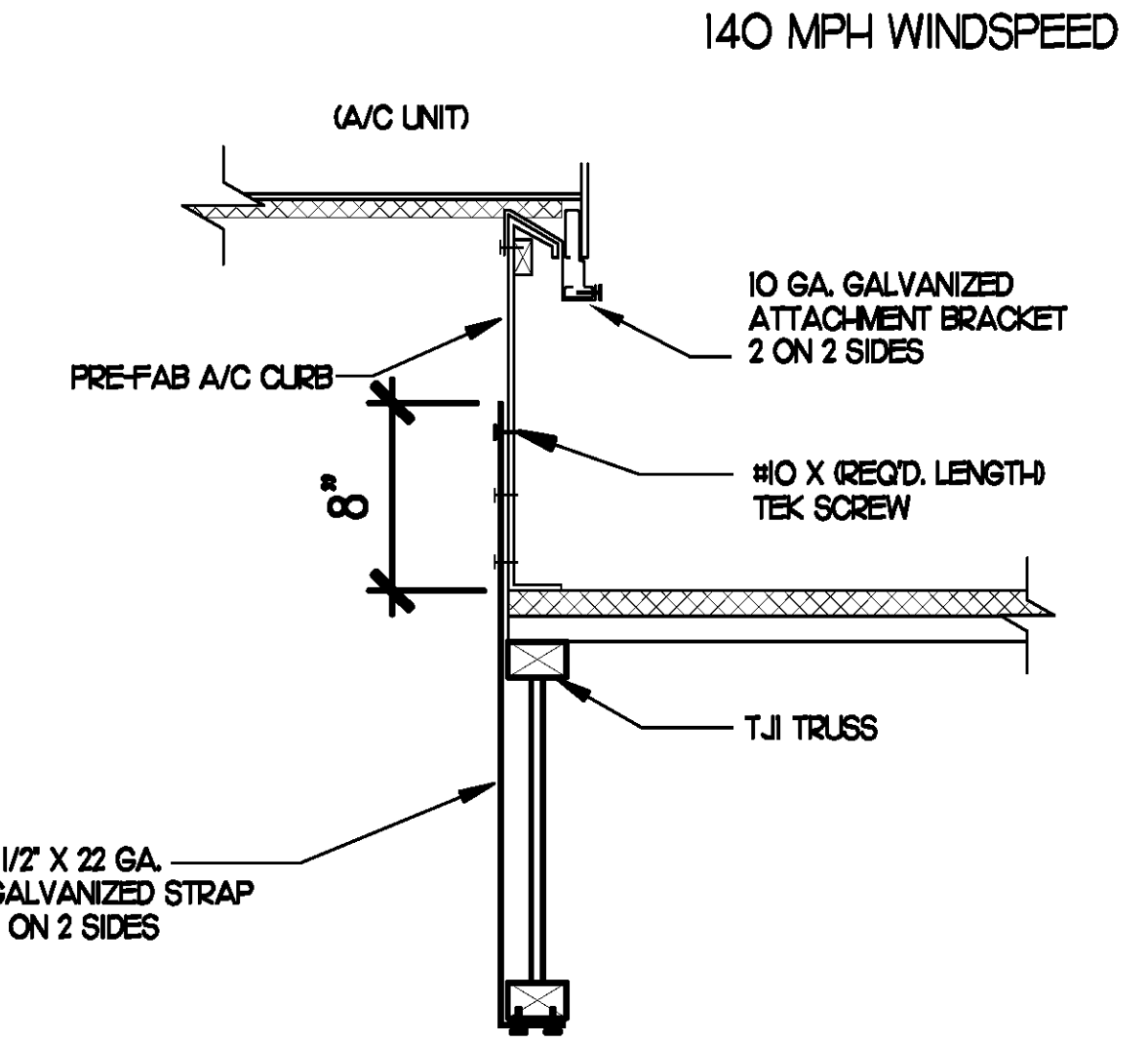


RAIL SECTION (TYP.)



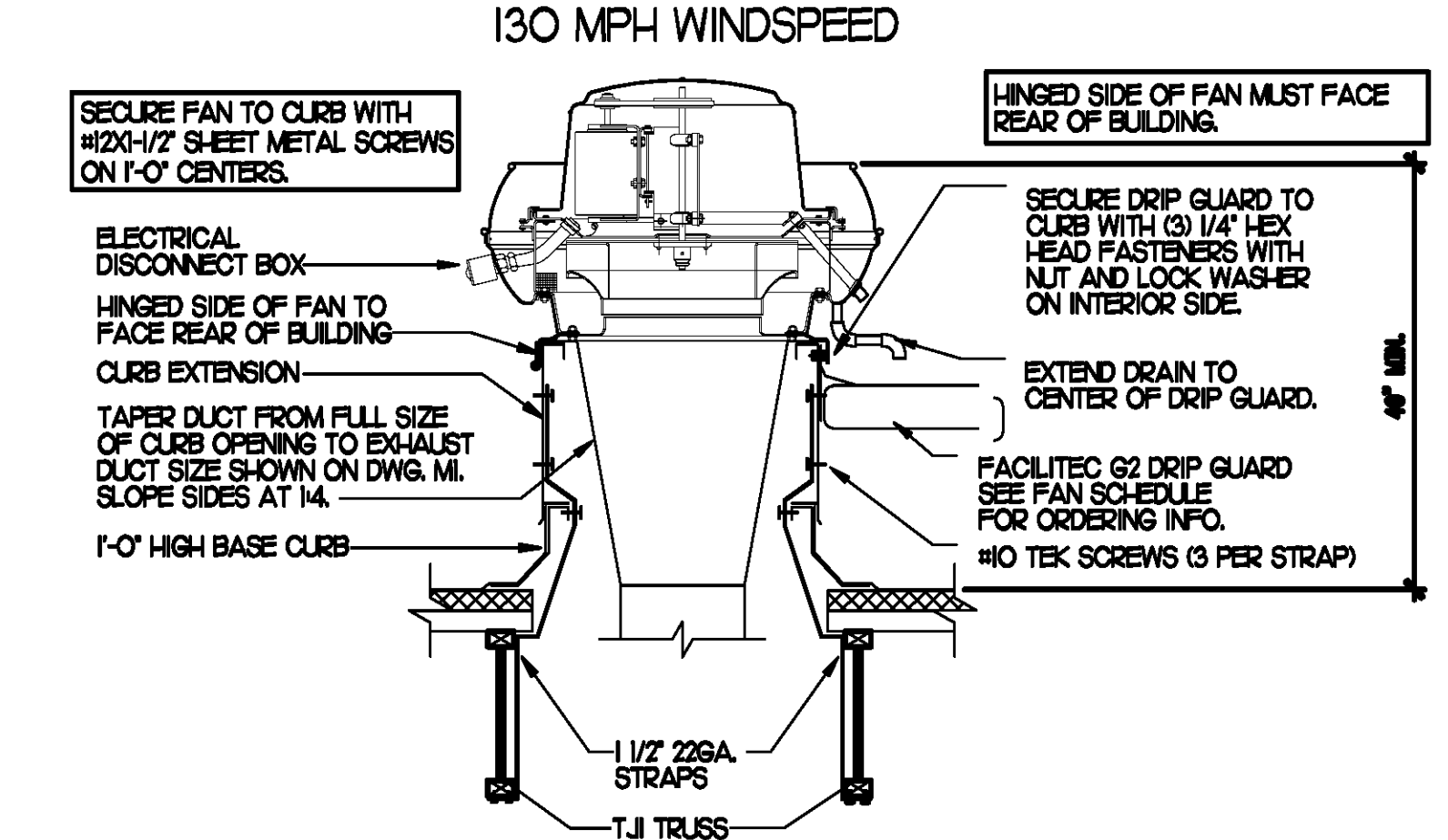
1 REFRIGERATION SYSTEM FRAMING SUPPORT DETAIL

NO SCALE



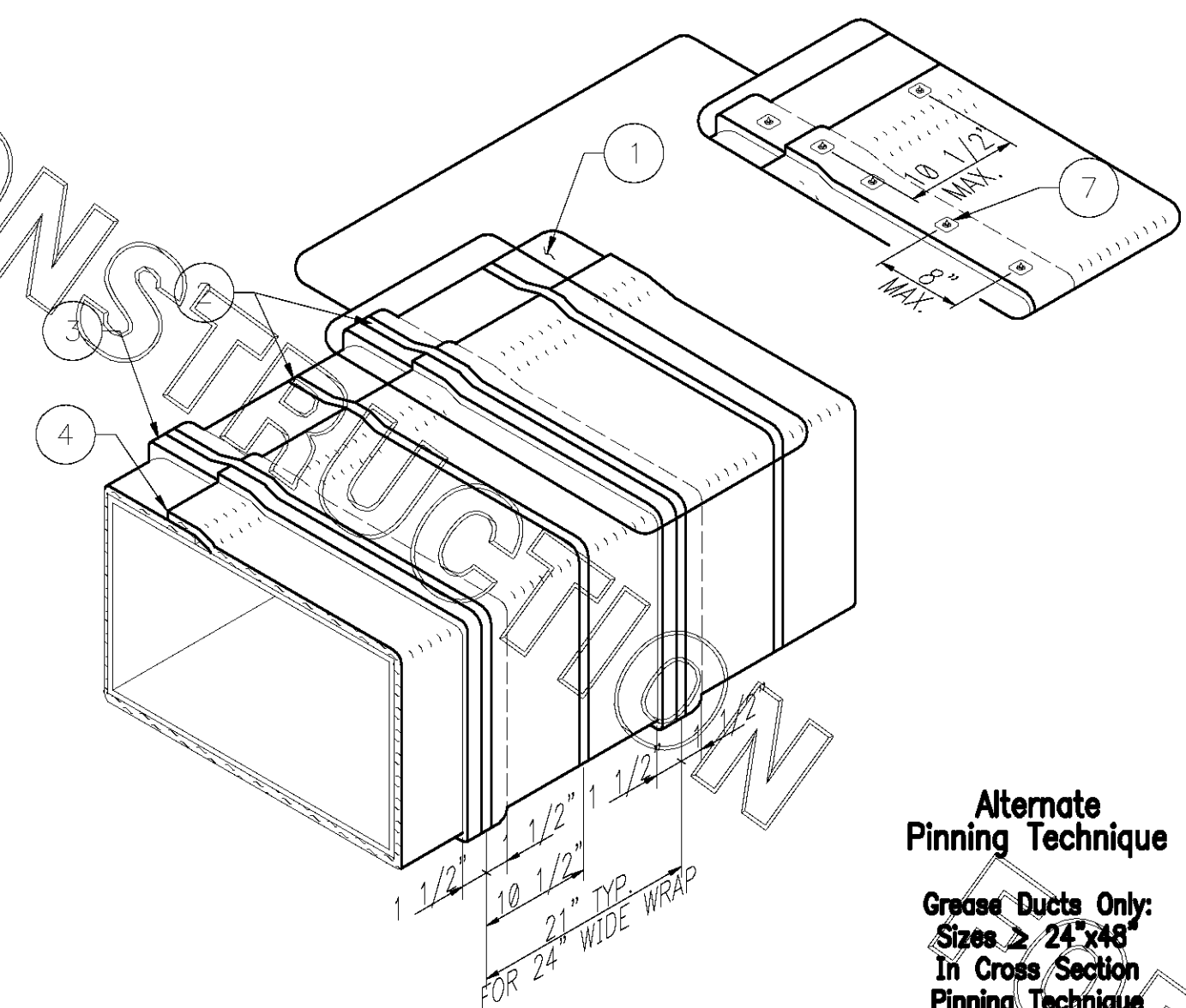
2 ROOFTOP A/C UNIT TIE-DOWN DETAIL

NO SCALE

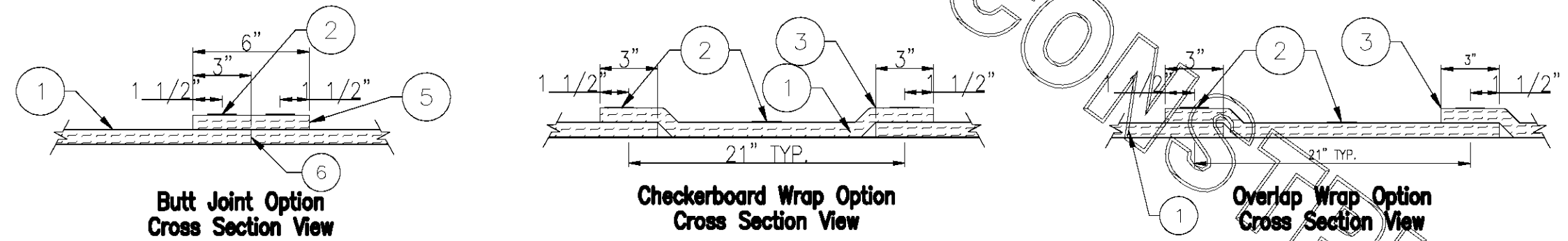


3 TYPICAL FAN TIE-DOWN SYSTEM DETAIL

NO SCALE



Alternate Pinning Technique
 Grease Ducts Only:
 Sizes > 24"x48"
 In Cross Section
 Pinning Technique
 Required.



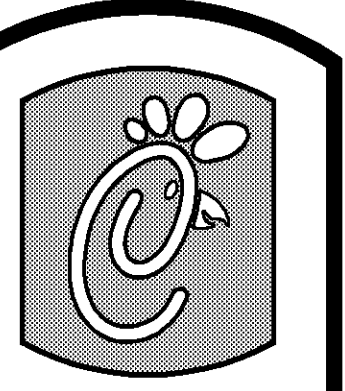
4 GREASE EXHAUST DUCT PROTECTION TO COMBUSTIBLES DETAIL

NO SCALE

Thermal Ceramics
FireMaster® 1 1/2" FastWrap®+
 Commercial Kitchen Grease Duct
 Or Air Ventilation Duct System
 1 Or 2 Hour Shaft Alternative
 Zero Clearance To Combustibles

Omega Point Laboratories	
Design No. GD 544 F and GD 562 F	
1	One Layer FireMaster FastWrap+, 1 1/2" thick
2	Steel Banding 1/2" Wide Min.
3	3" Min. Longitudinal Overlap
4	3" Min. Perimeter Overlap
5	6" Wide FireMaster FastWrap+ Collar (For Butt Joint Option)
6	Firmly Butted Joint (For Butt Joint Option)
7	10 or 12 Gage Steel Insulation Pin With 1 1/2"x1 1/2" or 1 1/2" Dia. Galvanized Speed Clips (For Alternate Pinning)

Note:
 The Integrity Of FireMaster Duct Systems Is Limited To The Quality Of The Installation.



5200 Buffington Rd.
 Atlanta Georgia,
 30349-2998

Revisions:
 Mark Date By

Mark Date By

Mark Date By

Mark Date By

Mark Date By

Mark Date By

Seal

Seal

AA 004920
 CA 8660
 933 LEE ROAD, FIRST FLOOR
 ORLANDO, FLORIDA 32810
 PH 407.646.9008
 FX 407.650.9124

INTERPLAN
 ARCHITECTURE
 ENGINEERING
 INTERIOR DESIGN
 PROJECT MANAGEMENT

STORE
 VIERA
 FSU S06 C

8300 N. WICKHAM
 ROAD,
 MELBOURNE, FL
 32940.

SHEET TITLE
**MECHANICAL
 DETAILS**

DWG EDITION 07.1
 REVISION

Job No. : 08.0398
 Store : 2106
 Date : 10-15-08
 Drawn By : JB
 Checked By : TDG

Sheet

M-3.2