

Chick-fil-A

5200 Buffington Rd.
Atlanta Georgia,
30349-2998

| Revisions: | Mark | Date | By |
|------------|------|------|----|
| △ | | | |
| △ | | | |
| △ | | | |
| △ | | | |
| △ | | | |
| △ | | | |

Kurzynske & Associates
CONSULTING ENGINEERS
825 Third Avenue, South
Nashville, Tennessee 37210
Telephone: (615) 255-5203
Fax: (615) 255-5207
Email: mail@kurzyske.com

STORE
Joppa Road
FSR #1941
2008 E. Joppa Rd.
Parkville, MD
21234

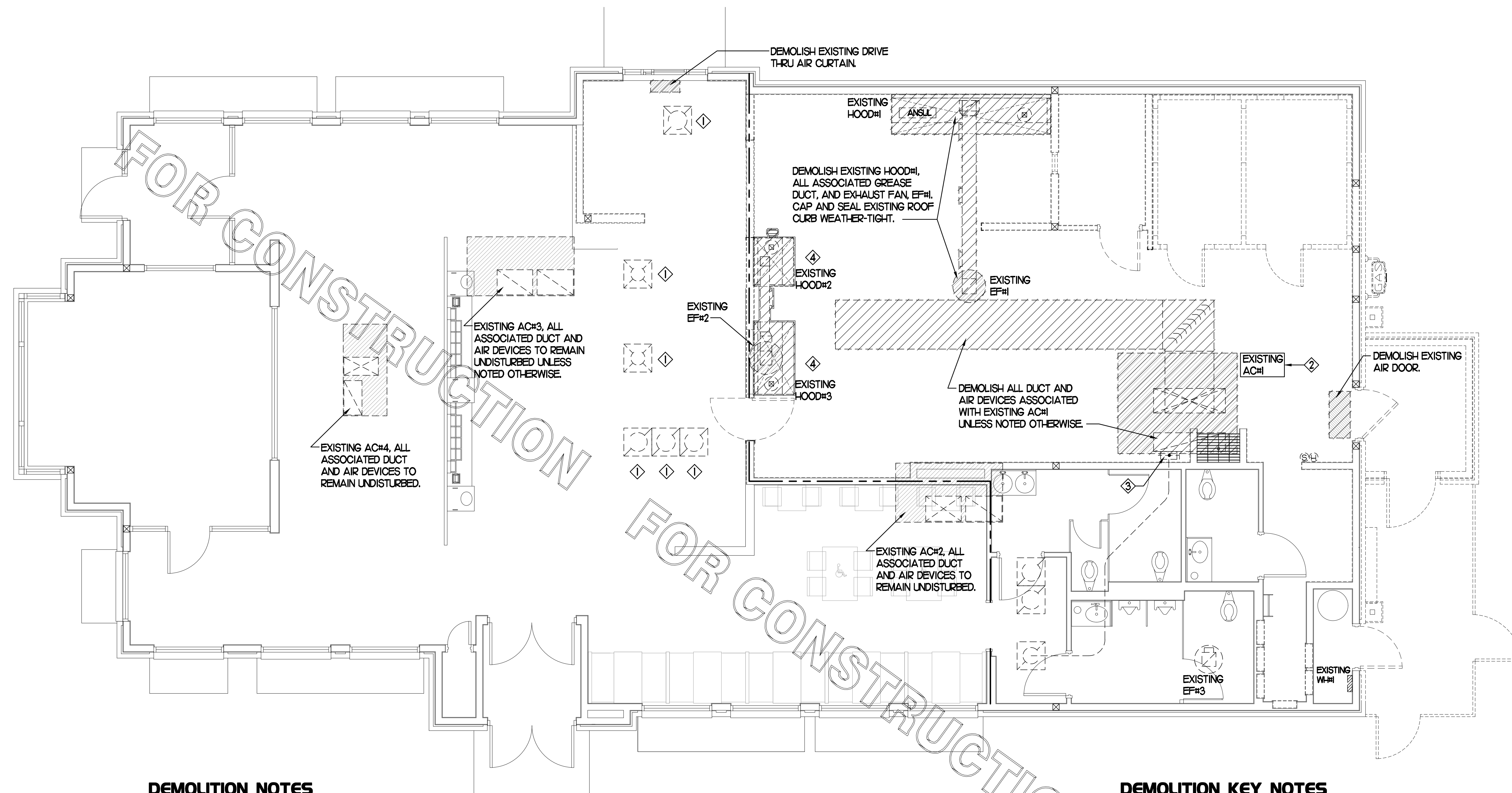
SHEET TITLE
MECHANICAL
DEMO PLAN

VERSION : S06-E
ISSUE DATE

Job No. : CFHF1511
Store : #1941
Date : 08.28.15
Drawn By : BM
Checked By : MK

Sheet

MO.I



DEMOLITION NOTES

- CONTRACTOR IS RESPONSIBLE FOR OBTAINING ALL NECESSARY PERMITS AND PAYING ALL APPLICABLE FEES.
- DISPOSAL OF EQUIPMENT AND MATERIALS REQUIRED TO BE REMOVED SHALL BE THE RESPONSIBILITY OF THE CONTRACTOR PERFORMING THE WORK.
- DE-ENERGIZE ALL ELECTRICAL CIRCUITS RELATED TO EQUIPMENT THAT WILL BE MOVED OR REMOVED PRIOR TO STARTING WORK. DE-ENERGIZED CIRCUITS SHALL BE PROTECTED WITH LOCKING DEVICES USING APPROPRIATE WARNING LABELS.
- MECHANICAL CONTRACTOR SHALL BE RESPONSIBLE FOR PATCHING ROOF AFTER REMOVAL OF EXISTING MECHANICAL EQUIPMENT. SEE ARCHITECTURAL DRAWINGS FOR ROOF PATCHING REQUIREMENTS.
- EXCEPT WHERE NOTED, EXISTING REMOTE TEMPERATURE &/OR HUMIDITY SENSORS TO REMAIN. IF DURING RENOVATION PURPOSES CONTROLS SHALL BE TAKEN DOWN, MECHANICAL CONTRACTOR SHALL BE RESPONSIBLE FOR REINSTALLING AND TO PROVIDE ANY ADDITIONAL WIRING NEEDED. VERIFY EXISTING UNIT CONTROLS ARE IN GOOD WORKING ORDER. IF NOT, CONTACT CHICK-FIL-A CONSTRUCTION MANAGER.
- MECHANICAL CONTRACTOR SHALL PERFORM ROUTINE MAINTENANCE ON EXISTING ROOFTOP UNITS AND MAKE ANY NECESSARY REPAIRS. VERIFY EXISTING UNITS ARE FULLY CHARGED WITH NECESSARY REFRIGERANT WITH NO LEAKS. NEW BELTS AND REPLACE AND FAN MOTORS NECESSARY.
- CONTRACTOR SHALL INDICATE SALVAGE VALUE IN BID FOR ROOFTOP UNITS BEING REPLACED.

MECHANICAL DEMOLITION FLOOR PLAN

SCALE: 1/4"=1'-0"

| DEMOLITION LEGEND | |
|-------------------|--|
| | EXISTING EQUIPMENT, DUCT, AIR DEVICE ETC. TO REMAIN INTACT |
| | EQUIPMENT, DUCT, AIR DEVICE ETC. TO BE DEMOLISHED |

DEMOLITION KEY NOTES

- RELOCATE EXISTING DIFFUSER WITHIN NEW CEILING GRID. SEE SHEET M.I. FOR NEW LOCATION.
- EXISTING AC#1 TO BE REPLACED. DETACH EXISTING CONTROLS FROM EXISTING AC#1 AND DEMOLISH UNIT. COVER CURB WEATHER-TIGHT FOR RE-USE. SEE SHEET M.I. FOR FURTHER INFORMATION.
- DETACH RETURN BRANCH SERVING THE AIR DEVICE IN RESTROOM VESTIBULE PRIOR TO DEMOLISHING EXISTING AC#1 SUPPLY & RETURN DUCT. EXISTING RETURN BRANCH IS TO REMAIN FOR RE-CONNECTION. SEE SHEET M.I. FOR FURTHER INFORMATION.
- DEMOLISH EXISTING HOOD#2, EXISTING HOOD#3, ALL ASSOCIATED GREASE DUCT, EXHAUST FAN EF#2, AND ITS ASSOCIATED ROOF CURB. COVER ROOF OPENING WEATHER-TIGHT FOR RE-USE. SEE SHEET M.I. FOR FURTHER INFORMATION.

MODEL: KVL-2 FACTORY MUST BE ADVISED BY AN SPECIAL REQUIREMENTS OF THE JURISDICTION AT TIME OF QUOTE

STANDARD FEATURES

| | |
|-------------------------|---|
| S.S. FILTERS (KSA) | 7 |
| 1/2 S.S. FILTERS (KSA) | 1 |
| CAPTURE-JET FIRE DAMPER | * |
| STAND-OFF | * |

OPTIONS

| | |
|-------------------------------|---|
| REMOTE SWITCH PANEL | * |
| FIRE PROTECTION | * |
| ETL LISTED W/D EXHAUST DAMPER | * |
| CEILING CLOSURE | * |
| STD. BACKSPASH | * |
| INSULATED BACKSPASH | * |

MATERIAL

| | |
|------------------|-------------|
| EXPOSED SURFACES | 18 GA. S.S. |
| ALL | 18 GA. S.S. |

COMMENTS:

- CLOSURE HEIGHT = TBD (TWO SIDES)
- CEILING HEIGHT = ADVISE CEILING CLOSURE RECESSED 1" FROM FRONT TO CREATE SHELVE
- FRONT CLOSURE PANEL WITH 54"x24" ACCESS DOOR RIGHT SIDE (ACCESS TO ANSUL TANKS)
- 18"x18" ACCESS DOOR LEFT SIDE AT CAPTURE-JET W/ FRONT C/J INTAKE
- EQUIPMENT COVERED
- PRESSURE FRYERS
- GRILLS

FULL RIGHT END PANEL

NOTCHED LEFT END PANEL

3" REAR STAND-OFF TO HAVE 1" THICK INSULATION

HOOD WEIGHT = 943 LBS

| | | | |
|----------|-----------|----------|-------------------------|
| DATE | DWG. NO. | ITEM NO. | EXHAUST AIR INFORMATION |
| 03.09.15 | U15-146-1 | H-1 | CFM TAB SP |

PROJECT: CHICK-FIL-A #1941
JOPPA ROAD

LOCATION: PARKVILLE, MD

SUBMITTED BY: HALTON CO. #193

MODEL: KVL-C FACTORY MUST BE ADVISED BY AN SPECIAL REQUIREMENTS OF THE JURISDICTION AT TIME OF QUOTE

STANDARD FEATURES

| | |
|-------------------------|---|
| S.S. FILTERS (KSA) | 2 |
| CAPTURE-JET FIRE DAMPER | * |
| STAND-OFF | * |

OPTIONS

| | |
|-------------------------------|---|
| REMOTE SWITCH PANEL | * |
| FIRE PROTECTION | * |
| ETL LISTED W/D EXHAUST DAMPER | * |
| CEILING CLOSURE | 2 |
| STD. BACKSPASH | 2 |
| INSULATED BACKSPASH | * |

MATERIAL

| | |
|------------------|-------------|
| EXPOSED SURFACES | 18 GA. S.S. |
| ALL | 18 GA. S.S. |

COMMENTS:

- CLOSURE HEIGHT = TBD (TWO SIDES)
- CEILING HEIGHT = ADVISE CEILING CLOSURE RECESSED 1" FROM FRONT TO CREATE SHELVE
- 18"x18" ACCESS DOOR CENTERED AT CAPTURE-JET W/ FRONT C/J INTAKE
- NOTCHED LEFT END PANEL
- DOUBLE RECEPTACLE PIN & SLEEVE
- 3" x 3" TRIM STRIP FOR STAND-OFF ON RIGHT END
- 3" SIDE & REAR STAND-OFFS TO HAVE 1" THICK INSULATION
- EQUIPMENT COVERED
- FRYERS

HOOD WEIGHT = 850 LBS

| | | | |
|----------|-----------|----------|-------------------------|
| DATE | DWG. NO. | ITEM NO. | EXHAUST AIR INFORMATION |
| 03.09.15 | U15-146-1 | H-2 | CFM T.A.B. SP |

PROJECT: CHICK-FIL-A #1941
JOPPA ROAD

LOCATION: PARKVILLE, MD

SUBMITTED BY: HALTON CO. #193

MODEL: KVM FACTORY MUST BE ADVISED BY AN SPECIAL REQUIREMENTS OF THE JURISDICTION AT TIME OF QUOTE

STANDARD FEATURES

| | |
|-------------------------|---|
| S.S. FILTERS (KSA) | 4 |
| CAPTURE-JET FIRE DAMPER | * |
| STAND-OFF | * |
| INCANDESCENT LIGHT | 1 |

OPTIONS

| | |
|-------------------------------|---|
| REMOTE SWITCH PANEL | * |
| FIRE PROTECTION | * |
| ETL LISTED W/D EXHAUST DAMPER | * |
| CEILING CLOSURE | 3 |
| STD. BACKSPASH | * |
| INSULATED BACKSPASH | * |

MATERIAL

| | |
|------------------|-------------|
| EXPOSED SURFACES | 18 GA. S.S. |
| ALL | 18 GA. S.S. |

COMMENTS:

- CLOSURE HEIGHT = TBD (THREE SIDES)
- CEILING HEIGHT = ADVISE CEILING CLOSURE RECESSED 1" FROM FRONT TO CREATE SHELVE
- 54"x24" ACCESS DOOR LEFT SIDE (ACCESS TO ANSUL TANKS) & 18"x18" ACCESS DOOR RIGHT SIDE (ACCESS TO ANSUL TANKS)
- SIDE-JET PLENUM SUPPLIED BY HALTON INSTALLED BY OTHERS (DETAIL "A")
- CUSTOM 10" SINGLE RECEPTACLE PIN & SLEEVE OF REAR STAND-OFF TO HAVE 1" THICK INSULATION
- NOTCHED RIGHT END PANEL, SIDE SHELVE ON LEFT SIDE HOOD TO GET ADJUSTABLE TRIM ANGLE
- EQUIPMENT COVERED
- DYEN, GRIDDLE, FRYER
- ANSUL WEIGHT = 63 LBS
- HOOD WEIGHT = 600 LBS

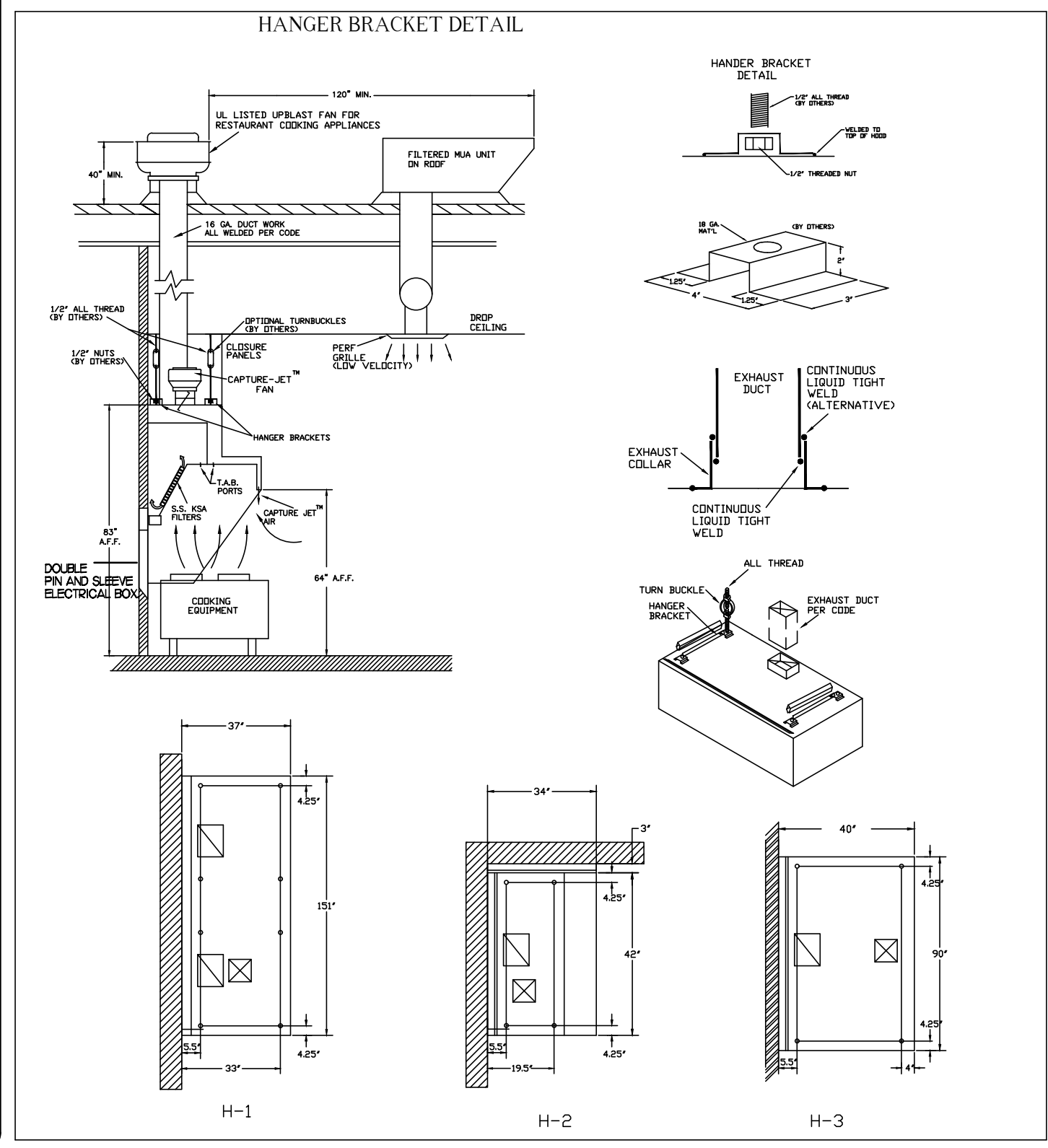
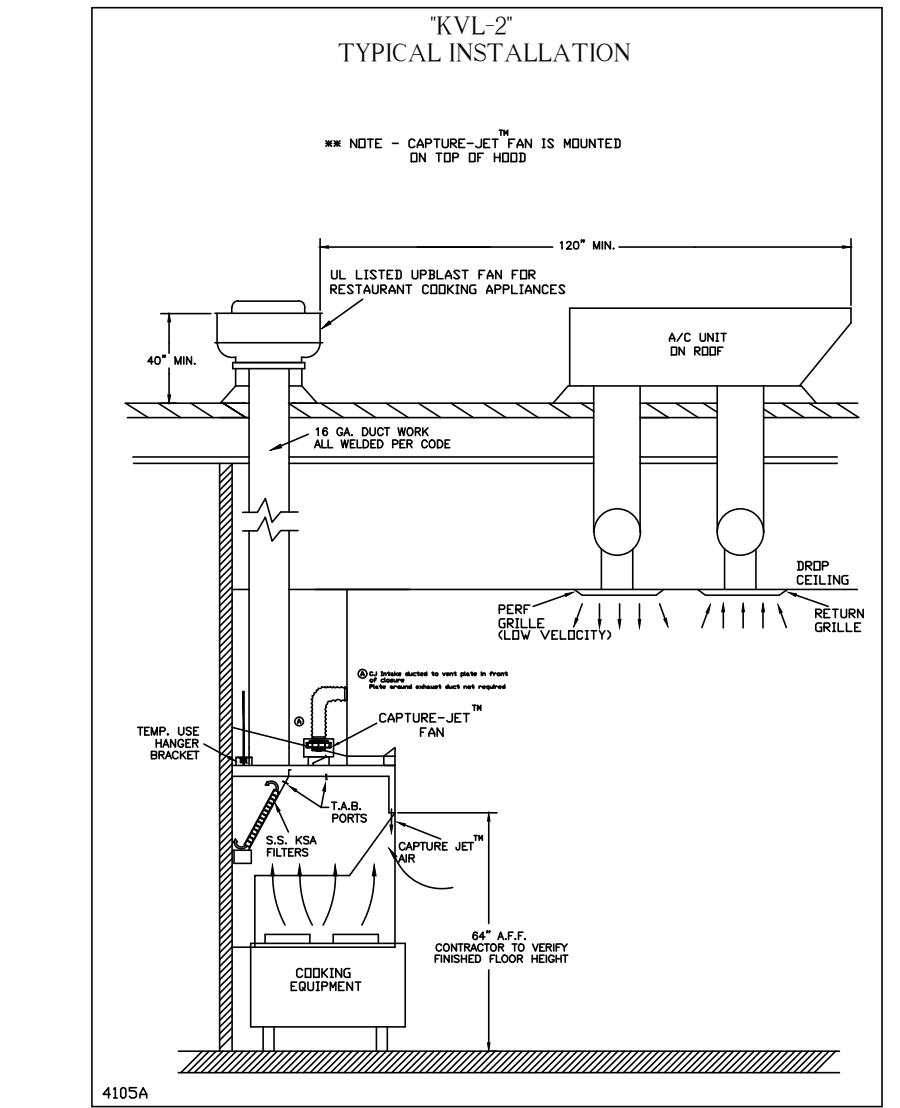
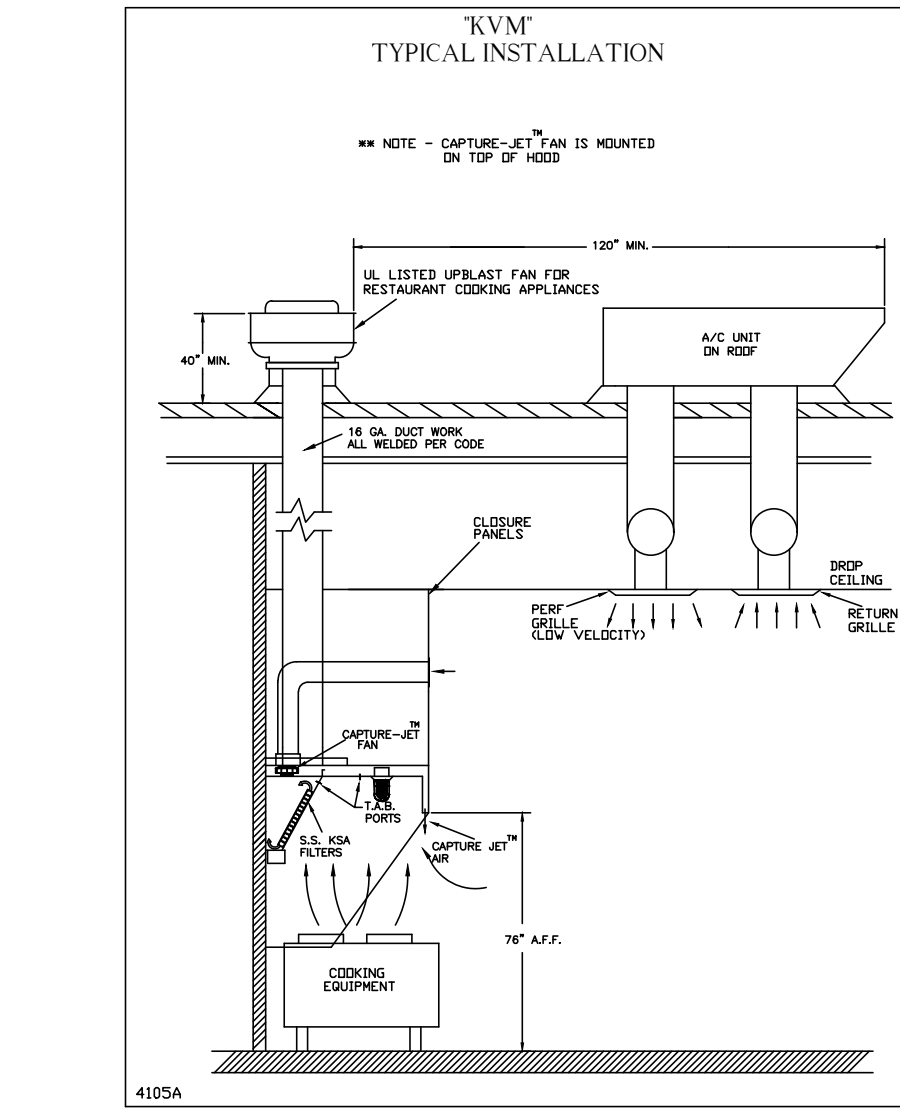
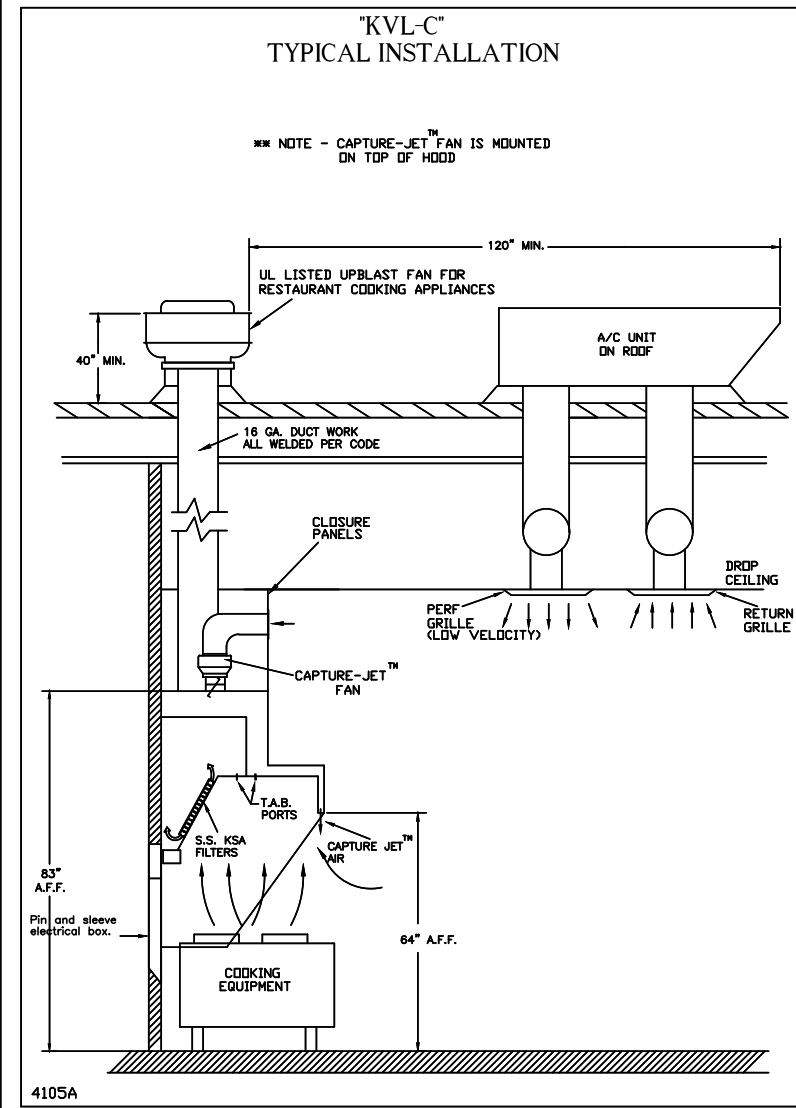
HOOD WEIGHT = 600 LBS

| | | | |
|----------|-----------|----------|-------------------------|
| DATE | DWG. NO. | ITEM NO. | EXHAUST AIR INFORMATION |
| 03.09.15 | U15-146-1 | H-3 | CFM T.A.B. SP |

PROJECT: CHICK-FIL-A #1941
JOPPA ROAD

LOCATION: PARKVILLE, MD

SUBMITTED BY: HALTON CO. #193



Capture-Jet Fan Installation and Dimensional Data

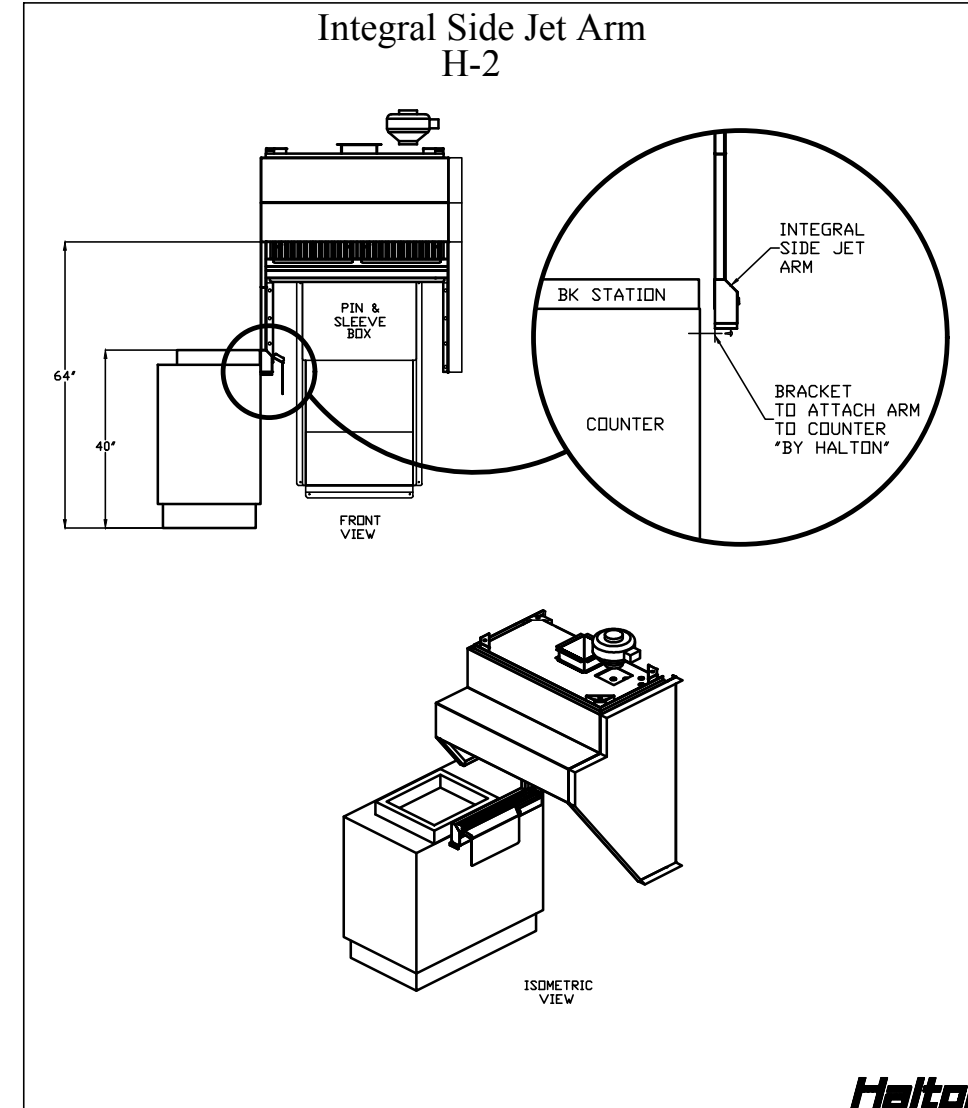
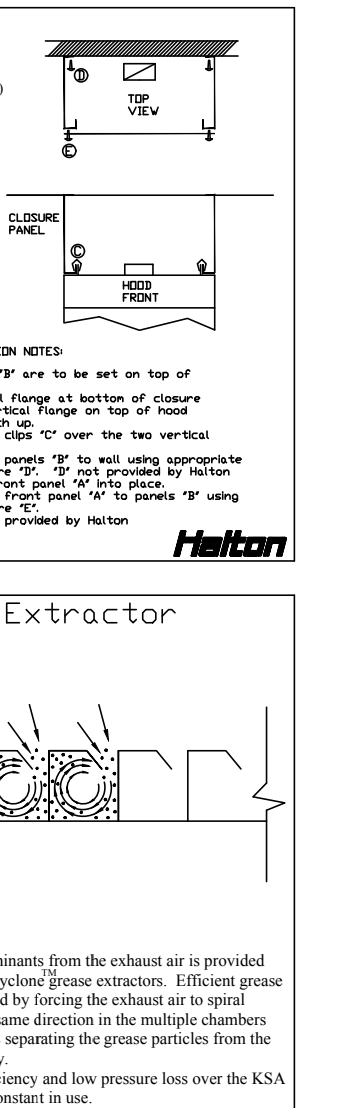
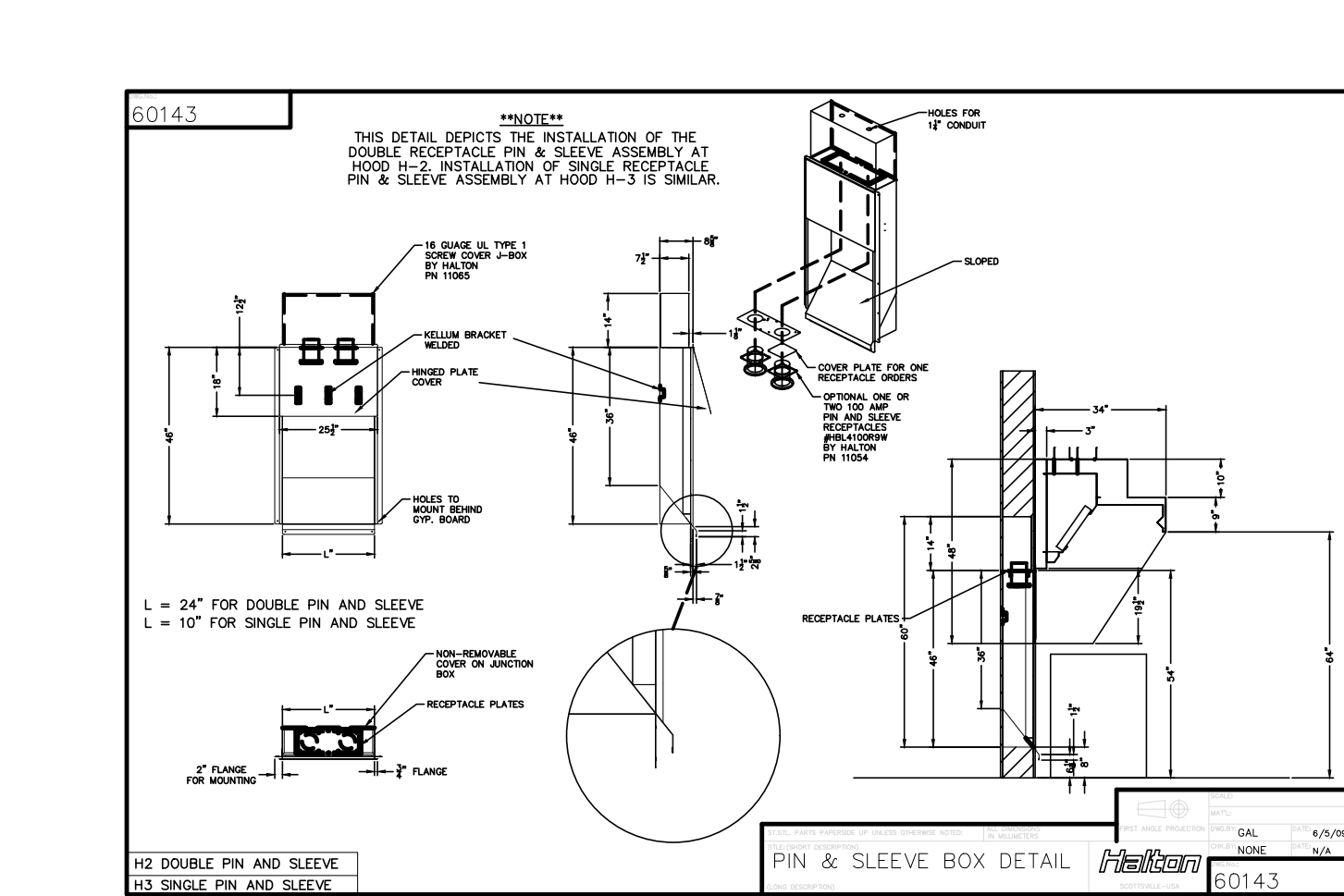
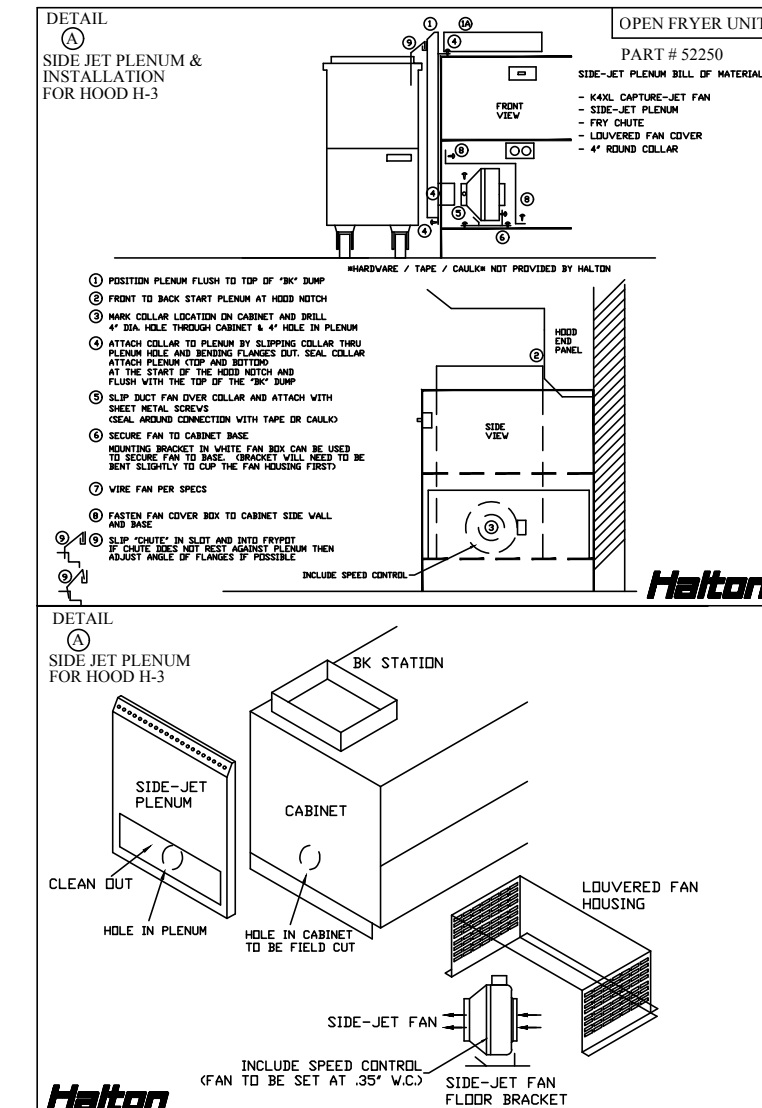
| MODEL | AIR FLOW @1' SP | ØD | Ød | A | HP | FLA | VOLTAGE | LBS. |
|-------|-------------------|--------|------|------|-----|------|----------|------|
| K4XL | 30 CFM - 80 CFM | 9.50" | 4.0" | 6.0" | .11 | .75 | 120/1/60 | 6.6 |
| K6XL | 70 CFM - 170 CFM | 13.20" | 6.0" | 6.0" | .20 | 1.31 | 120/1/60 | 10.6 |
| K8XL | 100 CFM - 240 CFM | 13.20" | 8.0" | 6.0" | .20 | 1.32 | 120/1/60 | 11 |

5 AMP SPEED CONTROLLER LOCATION

TOP OF HOOD

MOTOR CTRL. PANEL

PROJECT: CHICK-FIL-A #1941
DATE: 03.09.15
LOCATION: PARKVILLE, MD
DWG: U15-146-1



Halton

HALTON COMPANY, 101 INDUSTRIAL DR., SCOTTSVILLE, KY 42684

MODEL NO. SERIAL NO.

LETTER FILE

GENERAL REQUIREMENTS

- NEAR COOKING SURFACE TEMPERATURE
- MINIMUM CLEARANCE TO THE COOKING SURFACE, SEE TABLE A TO FRONT
- MINIMUM DESIGN EXHAUST AIR FLOW, SEE TABLE A
- REPLACE FILTERS WITH CLASSIFIED GREASE FILTERS OF THE SAME MODEL AND MANUFACTURE
- DESIGN EXHAUST AIR FLOW, DEVELOPING SURFACE TEMPERATURES UP TO 400°F (150°C)
- DESIGN EXHAUST AIR FLOW, PRESSURE AT SIDE JETS TO BE SET AT 100 PPM AT PRESSURE POINT
- NEED UNIFORM FLOW COOKING SURFACE, 0.24 IN HOOD TO SIDE OF HOOD
- NEED UNIFORM FLOW COOKING SURFACE, 0.24 IN HOOD TO HOOD TO FRONT EDGE OF HOOD

THIS DRAWING MUST BE SIGNED, SIGNED AND RETURNED TO THE APPROPRIATE FACTORY. PLEASE SIGNATURE THE FOLLOWING:

- DIMENSIONAL INFORMATION, MOUNTING POSITIONS
- THE LOCATION AND TYPE OF COOKING EQUIPMENT.

NOTE TO APPROVER: ANY CHANGES IN COOKING EQUIPMENT SUCH AS INCREASED ENERGY INPUTS OR EQUIPMENT POSITION MAY AFFECT EXHAUST AIRFLOW. HALTON MUST BE NOTIFIED IF ANY OF THESE CHANGES OCCUR. A RECALCULATION EXHAUST AIRFLOW MAY BE REQUIRED.

APPROVED FOR FABRICATION

WITH NO CHANGES WITH CHANGES AS NOTED

APPROVED BY: _____ DATE: _____

MAIL APPROVED DRAWINGS TO APPROPRIATE FACTORY BELOW: WEBSITE: WWW.HALTONCOMPANY.COM

HALTON CO. (USA)
101 INDUSTRIAL DRIVE
SCOTTSVILLE, KY 42684
1-270-237-5600

HALTON CO. (CANADA)
1021 BRUK PLACE
MISSISSAUGA, ON L4X 1L6
1-905-624-0301

PROJECT: CHICK-FIL-A #1941
LOCATION: PARKVILLE, MD
DRAWN BY: M.H. DATE: 03.09.15
SCALE: NTS

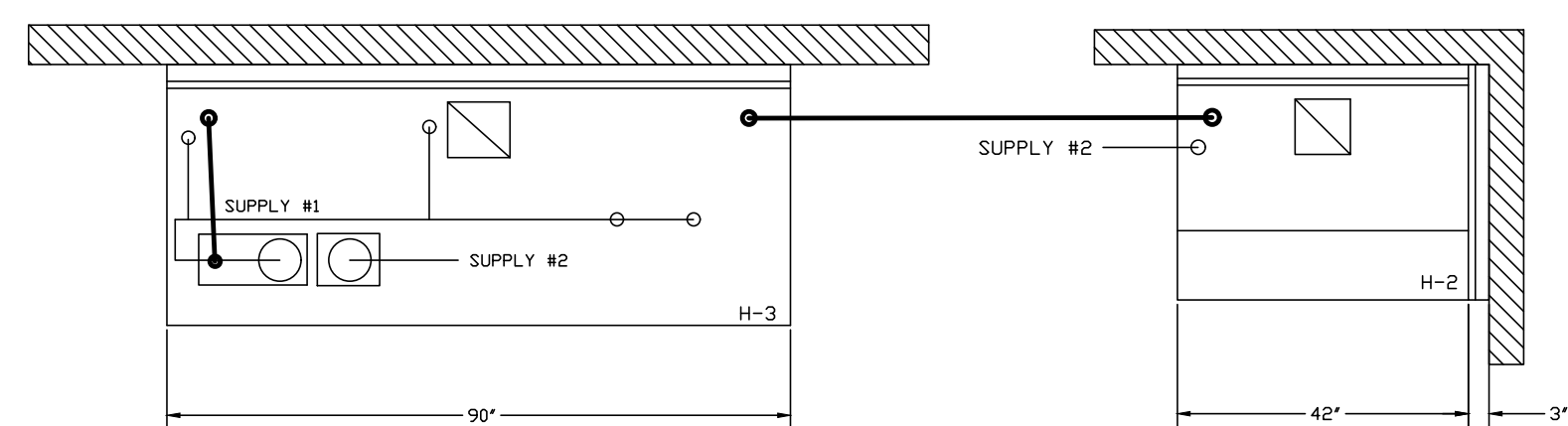
REVISION DESCRIPTION

| | | | |
|--------|-------------------------------------|------|---------------|
| REV. 1 | REVISED H-1 TO A SINGLE PLENUM HOOD | DATE | M.H. 08.20.15 |
| 2 | | | |
| 3 | | | |
| 4 | | | |
| 5 | | | |
| 6 | | | |
| 7 | | | |

Halton Dwg: U15-146-1

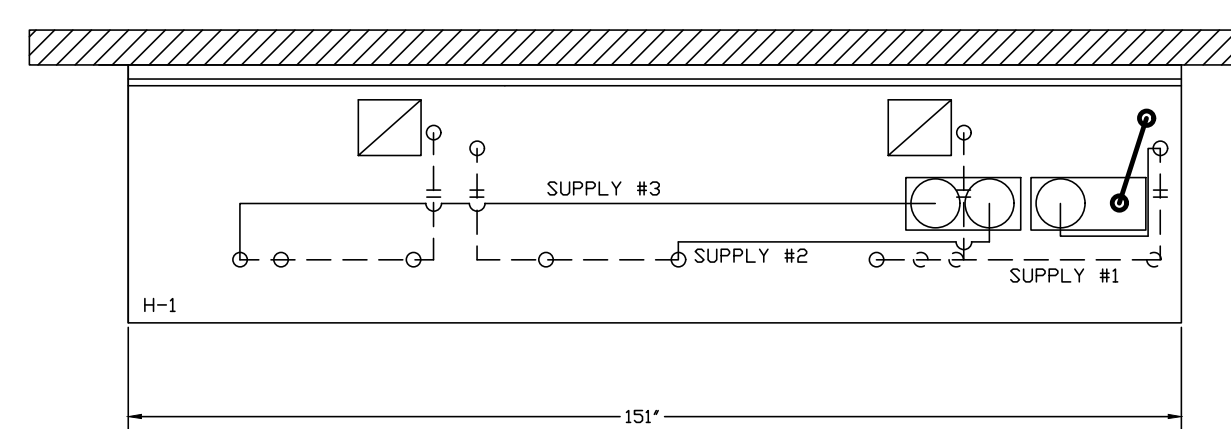
Halton
CARE FOR INDOOR AIR

Sheet **M.H.I.**



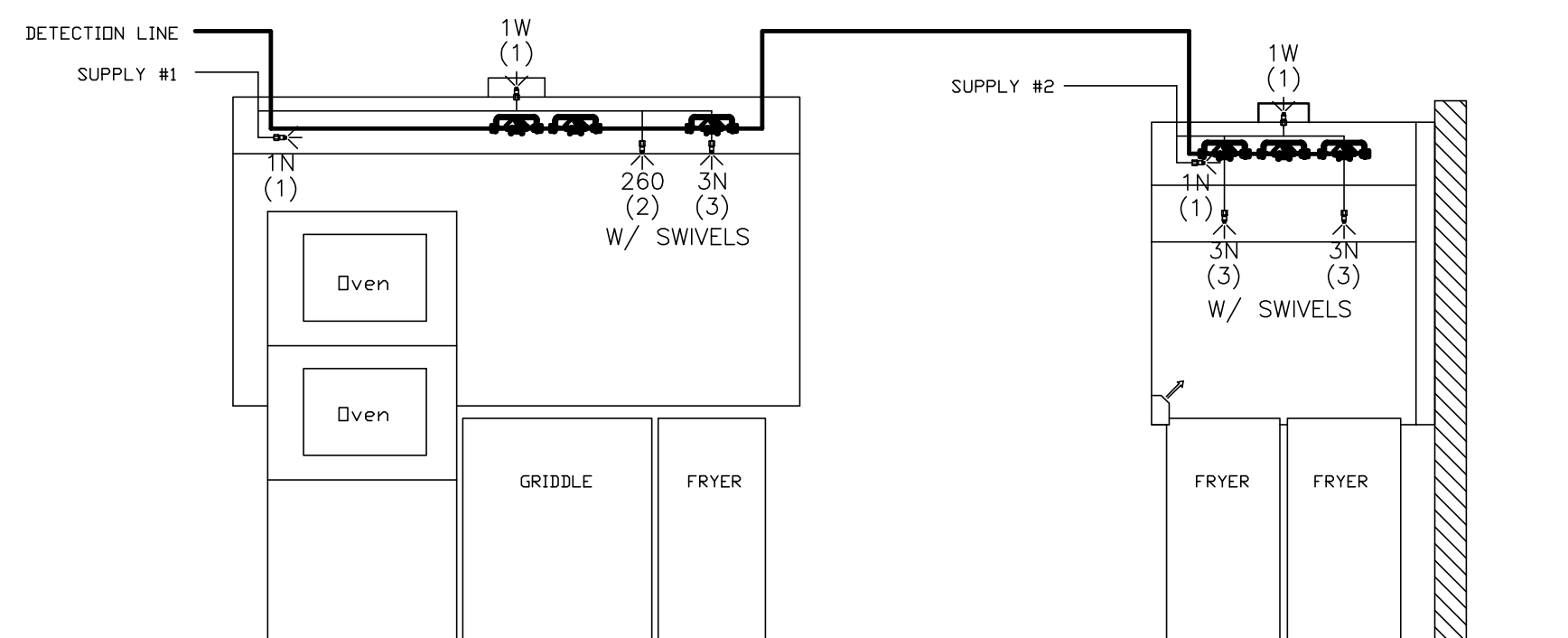
- (1) REGULATED RELEASE
- (2) EXTRA MICRO SWITCH ASSEMBLIES (MOUNTED IN REG. REL.)
- (3) SINGLE TANK ENCLOSURE
- (2) 3 GALLON TANK

- ANSUL R-102 FIRE SYSTEM
- A) 6 GALLON SYSTEM (2 TANKS) MOUNTED ON HOOD H-3 (FOR HOOD H-2 & H-3)
 - B) 3/8" BLACK IRON PIPING W/ 3/8" S.S. APPLIANCE DROPS

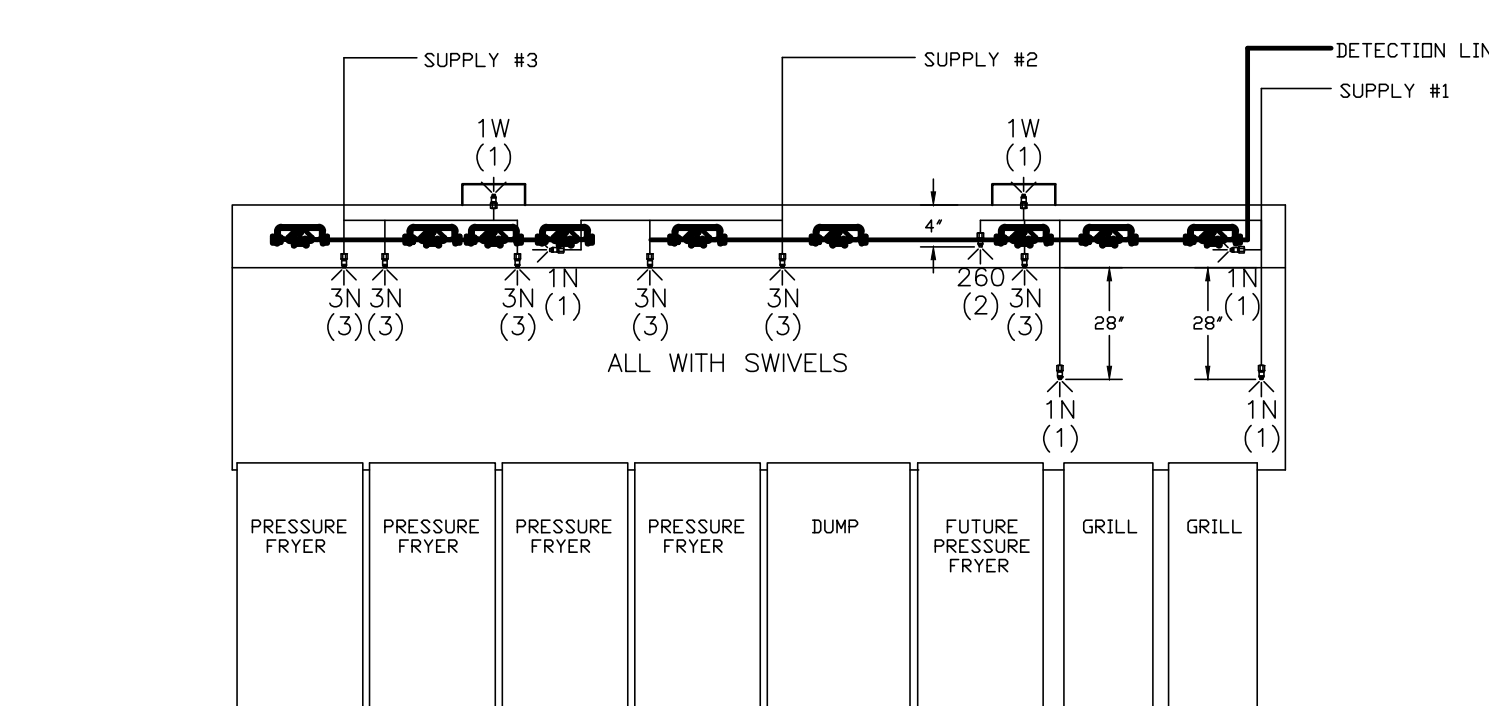


- (1) REGULATED RELEASE
- (2) EXTRA MICRO SWITCH ASSEMBLIES (MOUNTED IN REG. REL.)
- (3) DOUBLE TANK ENCLOSURE
- (3) 3 GALLON TANKS

- ANSUL R-102 FIRE SYSTEM
- A) 9 GALLON SYSTEM (3 TANKS) MOUNTED ON HOOD H-1 (FOR HOODS H-1L & H-1R)
 - B) 3/8" BLACK IRON PIPING W/ 3/8" S.S. APPLIANCE DROPS



ANSUL R-102 FIRE SYSTEM LAYOUT



ANSUL R-102 FIRE SYSTEM LAYOUT

FUSIBLE LINK RATINGS

| ITEM | TEMP |
|---------------------|------|
| OPEN FRYERS | 450° |
| 2 BURNER / FLAT TOP | 450° |
| PRESSURE FRYERS | 450° |
| GRILL | 450° |
| EXHAUST COLLARS | 450° |

ANSUL R-102 FIRE SYSTEM NOTES
THREE TANK SYSTEM MOUNTED ON TOP OF (H-1)
MAXIMUM FLOW POINTS = 33

ANSUL R-102 FIRE SYSTEM NOTES
TWO TANK SYSTEM MOUNTED ON TOP OF (H-3)
MAXIMUM FLOW POINTS = 22

| ITEM # | QTY | DESCRIPTION | FLOW PTS (TOTAL) |
|--------|-----|-------------------|------------------|
| 1W | 4 | DUCT NOZZLES | 4 |
| 1N | 4 | PLENUM NOZZLES | 4 |
| 1N | 2 | APPLIANCE NOZZLES | 2 |
| 3N | 9 | APPLIANCE NOZZLES | 27 |
| 260 | 2 | APPLIANCE NOZZLES | 4 |

TOTAL FLOW POINTS - 41

| ITEM # | QTY | DESCRIPTION |
|--------|-----|---|
| #200 | 13 | SERIES DETECTORS W/ FUSIBLE LINKS |
| #201 | 2 | TERMINAL DETECTOR W/ FUSIBLE LINKS |
| #202 | 2 | REGULATED RELEASE W/ DOUBLE POLE MICRO SWITCH |
| #203 | 5 | 3 GALLON TANKS |
| #204 | 1 | SINGLE TANK ENCLOSURE |
| #205 | 1 | DOUBLE TANK ENCLOSURE |
| #206 | 2 | REMOTE PULL STATION |

ANSUL R-102 FIRE SYSTEM
UL LISTED PER STD LATEST STD 300

- FINAL INSTALLATION IS TO BE MADE IN ACCORDANCE WITH ALL APPLICABLE CODES
- ALL ELECTRICAL COMPONENTS FOR EQUIPMENT SHUT DOWN TO BE PROVIDED BY THE ELECTRICIAN.
MICRO-SWITCH INSTALLED IN REGULATED RELEASE BY ANSUL INSTALLER
- REMOTE PULL STATION LOCATED PER MECHANICAL DRAWINGS

THIS DRAWING MUST BE CHECKED, SIGNED AND RETURNED TO THE APPROPRIATE FACTORY. PLEASE REFER TO THE FOLLOWING:

- ALL DIMENSIONAL INFORMATION, MOUNTING POSITIONS
- THE LOCATION AND TYPE OF COOKING EQUIPMENT.

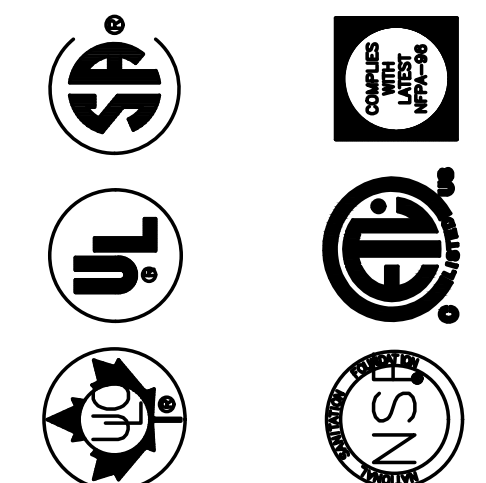
NOTE TO APPROVER
ANY CHANGES IN COOKING EQUIPMENT SUCH AS INCREASED ENERGY INPUTS OR EQUIPMENT POSITION MAY AFFECT EXHAUST AIRFLOW. HALTON MUST BE NOTIFIED IF ANY OF THESE CHANGES OCCUR. A REGULATION EXHAUST AIRFLOW MAY BE REQUIRED.

REVISE AND RESUBMIT

APPROVED FOR FABRICATION

WITH NO CHANGES WITH CHANGES AS NOTED

APPROVED BY: _____ DATE: _____



MAIL APPROVED DRAWINGS TO APPROPRIATE FACTORY BELOW: WEBSITE: WWW.HALTONCOMPANY.COM

HALTON CO. (CANADA)
1021 BREXIK PLACE
MISSISSAUGA, ONTARIO L4X 1G4
1-905-624-0301

HALTON CO. (USA)
101 INDUSTRIAL DRIVE
SCOTTSVILLE, KY 40154
1-270-237-5600

| REV. | DESCRIPTION | BY | DATE |
|------|------------------------------------|------|----------|
| 1 | REVISED H-1 TO A SINGLE PIECE HOOD | M.H. | 08.20.15 |
| 2 | | | |
| 3 | | | |
| 4 | | | |
| 5 | | | |
| 6 | | | |
| 7 | | | |

PROJECT: CHICK-FIL-A #1941
JOPPA ROAD
LOCATION: PARKVILLE, MD
DRAWN BY: M.H. DATE: 03.09.15
SCALE: NTS
Halton Dwg: U15-146-2

Halton
CARE FOR INDOOR AIR

Sheet **MHI.2**

I. SECTION C15000 - MECHANICAL SPECIFICATIONS

PART I - GENERAL

1.01 SCOPE

- A. IT IS THE RESPONSIBILITY OF CONTRACTOR TO READ ALL SPECIFICATIONS AND CONSULT ALL DRAWINGS WHICH MAY AFFECT THE INSTALLATION AND COORDINATION OF HIS WORK WITH OTHER TRADES. CONTRACTOR SHALL COORDINATE AND MAKE MINOR ADJUSTMENTS IN LOCATION OF EQUIPMENT AND MATERIALS AS NECESSARY TO SECURE COORDINATION.
- B. COMPLETED INSTALLATION SHALL CONFORM TO ALL APPLICABLE FEDERAL, STATE AND LOCAL CODES AND ORDINANCES, INCLUDING BUT NOT LIMITED TO THE LATEST APPROVED EDITIONS OF NFPA-96, NFPA-90A, NFPA-54, SMACNA, ASHRAE 90.1 AND ASHRAE 62.2.
- C. SYSTEM LAYOUT IS SCHEMATIC AND EXACT LOCATIONS SHALL BE DETERMINED BY STRUCTURAL CONDITIONS, COORDINATION WITH OTHER TRADES, COORDINATION WITH FINISHES AND OTHER CONDITIONS. STRUCTURAL SUPPORTS SHALL NOT BE CUT OR ALTERED TO ASSURE FIT OF HVAC SYSTEM. TEN FOOT CLEARANCE SHALL BE MAINTAINED BETWEEN OUTSIDE AIR INTAKES AND EXHAUST FANS AND PLUMBING VENT TERMINALS.
- D. CONTRACTOR SHALL BE RESPONSIBLE FOR ALL DEFECTS, REPAIRS AND REPLACEMENTS IN MATERIALS AND WORKMANSHIP FOR A PERIOD OF ONE (1) YEAR AFTER FINAL PAYMENT IS APPROVED. CONTRACTOR SHALL HONOR FACTORY WARRANTIES ON ALL EQUIPMENT PROVIDED AS PART OF THIS SYSTEM.
- E. UPON COMPLETION OF PROJECT, ALL SYSTEM EQUIPMENT AND MATERIALS SHALL BE IN NEW, CLEAN CONDITION WITH ALL DAMAGE RESTORED TO CONDITION ACCEPTABLE TO THE OWNERS REPRESENTATIVE. ALL EQUIPMENT, COMPONENTS AND DUCTWORK SHALL BE INSPECTED AND THOROUGHLY CLEANED, READY FOR USE. AT COMPLETION OF JOB, ALL MISCELLANEOUS TOOLS, SCAFFOLDING, SURPLUS MATERIALS, RUBBISH AND DEBRIS SHALL BE REMOVED BY CONTRACTOR.
- F. CONTRACTOR SHALL PROVIDE TWO SETS OF 2" MERV 8 OR HIGHER THROW AWAY TYPE FILTERS. A CLEAN SET SHALL BE PROVIDED PRIOR TO TEST AND BALANCE AND AGAIN PRIOR TO OPENING.

PART II - PRODUCTS

2.01 HEATING AND COOLING EQUIPMENT (C15730)

- A. FURNISH AND INSTALL R-410A ROOFTOP SINGLE PACKAGE COMBINATION ELECTRIC COOLING AND NATURAL GAS FIRED HEATING UNITS BY LENNOX AS SHOWN ON DRAWINGS. EQUIPMENT SHALL BE ARI CERTIFIED AND A.G.A. AND U.L. LISTED.
- B. ACCESSORIES SHALL INCLUDE LOW AND HIGH PRESSURE SAFETIES, CRANK CASE HEATER, OVERCURRENT AND OVERTEMPERATURE SAFETY, COMPRESSOR VIBRATION ISOLATORS, FILTER DRIERS, REFRIGERANT SERVICE VALVES, COIL HAIL GUARDS WHERE SCHEDULED, CONVENIENCE OUTLETS FACTORY INSTALLED ON SCHEDULED UNITS, UNIT MOUNTED NON-FUSED DISCONNECTS, LOW AMBIENT OPERATION DOWN TO 30 DEGREES F AND EVAPORATOR FREEZE STAT.
- C. COMPRESSORS SHALL BE FULLY HERMETIC SCROLL TYPE WITH INTERNAL VIBRATION ISOLATORS. COMPRESSORS SHALL BE PROVIDED WITH A MINIMUM FIVE (5) YEAR FULL WARRANTY.
- D. THE UNIT HEAT EXCHANGERS SHALL BE STEEL WITH ALUMINIZED STEEL COATING. HEATING CONTROLS SHALL CONSIST OF REDUNDANT GAS VALVES, INTERMITTENT PILOT WITH ELECTRONIC SPARK OR HOT PLATE IGNITION SYSTEM, COMBUSTION/EXHAUST FAN PROTECTED BY CENTRIFUGAL SWITCHES, HEAT LIMIT SWITCHES, TIME-DELAY RELAY, FLAME, AND PILOT SENSORS. ALL UNITS SHALL BE CAPABLE OF TWO STAGES OF HEAT. HEAT EXCHANGES SHALL HAVE A TEN (10) YEAR WARRANTY. BURNERS SHALL BE ALUMINIZED IN-SHOT TYPE. THE DRAFT MOTOR SHALL BE MONITORED BY THE CONTROL SYSTEM.
- E. CHICK-FIL-A MAINTAINS A NATIONAL ACCOUNT FOR EQUIPMENT WITH LENNOX CORPORATION. PRICING FOR THE EQUIPMENT HAS BEEN ESTABLISHED IN ADVANCE. CONTACT LENNOX NATIONAL ACCOUNTS AT 972-497-6260 (OR BY FAX AT 972-497-5112) FOR PRICING, ORDERING AND AVAILABILITY.

2.02 DUCTWORK (C15735) (SEE DWG M2.1 FOR ADDITIONAL GREASE DUCT SYSTEM REQ.)

- A. ACCEPTABLE MANUFACTURERS OF INSULATION ARE MANVILLE, OWENS CORNING OR KNAUF.
- B. ALL DUCTWORK SHALL BE SHEET METAL, UNLESS NOTED OTHERWISE (U.N.O.).
- C. DUCT DIMENSIONS SHOWN ARE INSIDE CLEAR DIMENSIONS, U.N.O.
- D. CONSTRUCTION OF DUCTWORK SHALL MEET SMACNA 1" W.C. PRESSURE CLASS STANDARD AND RECOMMENDATIONS. SMACNA SHALL BE FOLLOWED WITH RESPECT TO GAGE THICKNESS, JOINTS, REINFORCING, CONSTRUCTION, INSTALLATION AND SUPPORT FOR PRESSURE CLASS STATED. ALL TRANSVERSE JOINTS IN RECTANGULAR AND ROUND DUCT SHALL BE SEALED PER SMACNA SEAL CLASS C WITH U.L. DUCT MASTIC SEALANT APPROVED FOR INTENDED USE. DUCT TAPE IS NOT AN ACCEPTABLE SUBSTITUTE FOR MASTIC UNLESS EQUAL TO HARDCAST FOIL-GRIP 1402 BUTYL RUBBER ADHESIVE TAPE.
- E. ALL DUCT INSULATION SHALL MEET MINIMUM R-VALUE REQUIRED BY ASHRAE 90.1 LATEST EDITION. ALL DUCT WRAP SHALL BE MINIMUM 2" THICK, 3/4 PCF AND 5.6 R-VALUE INSTALLED WITH EITHER A VAPOR BARRIER WITH MAXIMUM PERMEANCE 0.05 OR A MINIMUM 2 MIL ALUMINUM REINFORCED FOIL/KRAFT FACING.
- F. ALL DUCT DROPS FROM THE ROOFTOP UNITS SHALL BE EXTERNALLY INSULATED.
- G. SUPPLY AND RETURN AIR DUCTWORK SERVING ALL AREAS SHALL BE EXTERNALLY INSULATED.
- H. ALL AIR CONVEYANCE COMPONENTS SUCH AS, BUT NOT LIMITED TO DUCT, DUCT PLENUMS, GRILLES/DIFFUSERS, BACK PANS, AND BOOTS SHALL BE INSULATED. INSULATION TYPE IS COVERED ELSEWHERE IN THIS SPECIFICATION.
- I. RESTROOM RECTANGULAR EXHAUST AIR DUCTWORK SHALL BE LINED WITH 1" THICK, 1-1/2 PCF INSULATION.
- J. TRUNK DUCTS SHALL BE ISOLATED FROM UNIT VIBRATION WITH THE USE OF NFPA AND U.L. APPROVED FLEXIBLE CONNECTORS INSTALLED AT THE TOP OF BOTH SUPPLY AND RETURN DROPS.
- K. INSULATED FLEXIBLE DUCT MAY BE UTILIZED FOR RUNOUTS TO GRILLES AND DIFFUSERS ONLY IN THE HORIZONTAL POSITION AND IN MAXIMUM LENGTHS OF 4'-0", NO EXCEPTIONS. SEE TAKE OFF DETAIL ON DRAWING M3.1.
- L. CONSTRUCTION OF FLEXIBLE DUCTWORK SHALL INCLUDE SPIRAL METAL HELIX BONDED TO A POLYESTER CORE, FIBERGLASS INSULATION WITH POLYETHYLENE OR MYLAR VAPOR BARRIER. ALL COMPONENTS SHALL HAVE APPROPRIATE U.L. APPROVAL AND SHALL BE EQUIVALENT TO THERMAFLEX MKE.
- M. FLEXIBLE DUCT SHALL BE INSTALLED PER THE "ADC FLEXIBLE DUCT PERFORMANCE AND INSTALLATION STANDARDS, 4TH ED" USING FOIL TAPE AND DRAWBAND ON THE INNER CORE AND TAPE OR DRAWBAND ON THE OUTER JACKET.
- N. DUCT TAPE SHALL BE EQUAL TO FASSON 181-B FX, 2-1/2" WIDE.
- O. SINGLE THICKNESS TURNING VANES SHALL BE INSTALLED AT 90 DEGREE TURNS IN SUPPLY DUCTWORK WHERE ANY ONE DIMENSION IS GREATER THAN 12".
- P. RADIUSSED ELBOWS MAY BE SUBSTITUTED FOR 90 DEGREE ELBOWS AT THE DISCRETION OF THE CONTRACTOR. CENTERLINE RADIUS EQUAL TO: R=W PER FIGURE NO. 2-2 IN SMACNA HVAC DUCT CONSTRUCTION STANDARDS.
- Q. EXTERNAL INSULATION ON BOTTOM OF DUCTS 24" OR WIDER SHALL BE SUPPORTED WITH STICK PINS ON 18" CENTERS. STICK PIN WASHERS SHALL BE COVERED WITH DUCT TAPE OR MASTIC.

2.03 CONTROLS (C15735)

- A. SYSTEMS SHALL BE COMPLETE WITH CONNECTIONS TO CFA-500 TEMPERATURE CONTROL PANEL AS MANUFACTURED BY SUNCOAST ENVIRONMENTAL CONTROLS (S.E.C.) (PH: 877-544-6679). THE PANEL IS EXISTING. CONTROL WIRING TERMINATIONS ARE BY THE MECHANICAL CONTRACTOR.
- B. THE SMOKE DETECTORS SHALL BE FACTORY INSTALLED AND WIRED BY THE ROOFTOP UNIT MANUFACTURER.
- C. A FACTORY INSTALLED SMOKE DETECTOR IN THE RETURN AIR SECTION OF EACH AIR CONDITIONING UNIT SHALL STOP THE INDOOR FAN AND CLOSE THE OUTSIDE AIR DAMPER IN THE EVENT OF EXCESSIVE TEMPERATURE OR SMOKE. SMOKE DETECTOR SHALL BE LOCATED PRIOR TO ANY EXHAUST FROM THE BUILDING OR MIXING WITH FRESH AIR MAKE-UP. UPON DETECTION, THE SYSTEM SHALL NOT RESTART UNTIL THE DEVICE IS MANUALLY RESET. DEVICES SHALL BE LOCATED WHERE THEY CAN BE EASILY ACCESSED AND WHERE CLEAR OF FILTERS.
- D. CHICK-FIL-A HAS A NATIONAL ACCOUNT WITH SUNCOAST ENVIRONMENTAL CONTROLS FOR THE SMOKE DETECTOR TEST/RESET ANNUNCIATOR STATIONS. THE TEST/RESET STATIONS WILL BE PURCHASED BY THE MECHANICAL CONTRACTOR AS A PART OF A NATIONAL ACCOUNT PACKAGE AND INSTALLED BY THE MECHANICAL CONTRACTOR.
- E. THE REMOTE TEST/RESET ANNUNCIATORS SHALL BE PROVIDED BY THE MECHANICAL CONTRACTOR AND INSTALLED BY THE MECHANICAL CONTRACTOR. INSTALLATION BY MECHANICAL SHALL INCLUDE MOUNTING OF THE ANNUNCIATORS AND ALL WIRING FROM EACH DEVICE TO THE RTU. ELECTRICAL WILL PROVIDE A JUNCTION BOX IN THE WALL WITH 1/2" CONDUIT STUBBED UP ABOVE THE CEILING FOR EACH REMOTE TEST STATION AS SHOWN ON THE ELECTRICAL PLANS. ANNUNCIATOR SHALL BE SUNCOAST CONTROLS REMOTE TEST/RESET STATION WITH POWER LED, TROUBLE LED, ALARM LED, 90DB HORN AND TEST/RESET BUTTON.
- F. THE RESTROOM FAN SHALL BE INTERLOCKED TO THE LIGHTS SERVING THE MEN AND WOMEN'S RESTROOMS. THE HOOD FANS SHALL BE CONTROLLED VIA THE SUNCOAST CFA-500 CONTROL PANEL. WIRING, RELAYS AND SWITCHES FOR CONTROL OF ALL FANS ARE BY ELECTRICAL CONTRACTOR.
- G. LENNOX UNITS - THERMOSTATS ARE PROVIDED AND INTEGRATED INTO THE TEMPERATURE CONTROL PANEL BY SUNCOAST ENVIRONMENT CONTROLS. SUNCOAST WILL PROVIDE A VENSTAR T2700 THERMOSTAT PRE-WIRED IN THE TEMPERATURE CONTROL PANEL. A REMOTE TEMPERATURE SENSOR FOR EACH THERMOSTAT IS ALSO PROVIDED. MECHANICAL CONTRACTOR SHALL INSTALL ALL WIRING BETWEEN THE THERMOSTAT, THE REMOTE SENSOR AND THE ROOFTOP UNIT.
- H. MECHANICAL CONTRACTOR SHALL INSTALL CONTROL WIRING IN 1/2" CONDUIT WHERE REQUIRED BY CODE. WHERE NOT REQUIRED TO BE IN CONDUIT, ALL WIRING SHALL BE RUN PARALLEL TO STRUCTURAL MEMBERS OR PERPENDICULAR WITH NO DIAGONAL ROUTING. ALL WIRING SHALL BE SECURED TO THE FRAMING TO PREVENT SAGGING IN RUNS. WIRING TO ROOFTOP UNITS SHALL BE ROUTED THROUGH THE FACTORY THRU-BASE FITTING IN THE UNIT BASE. NO SPLICING OF WIRING WILL BE ACCEPTED. ALL WIRING ABOVE THE ROOF SHALL BE INSTALLED IN EXTERIOR GRADE FLEXIBLE CONDUIT. ALL CONTROL WIRING AND CONTROL WIRING CONDUIT SHALL BE FURNISHED AND INSTALLED BY THE MECHANICAL CONTRACTOR. WIRING SHALL BE INSTALLED IN ACCORDANCE WITH LATEST EDITION OF NEC. ALL LOW VOLTAGE CONTROL WIRING SHALL BE NO LESS THAN 18 AWG MIN. CONTROL WIRING CONDUCTORS SHALL BE SIZED TO ACCOUNT FOR LOAD AND LENGTH OF RUN TO ALLOW SUFFICIENT VOLTAGE AVAILABLE AT CONTROLLED DEVICE TO OPERATE THE SYSTEM RELIABLY.

PART III - EXECUTION

3.01 SCOPE

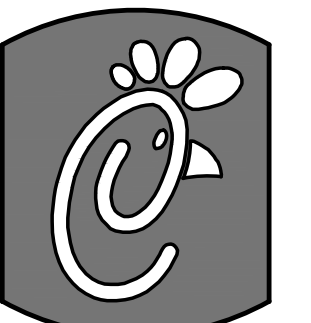
- A. FURNISH AND INSTALL SYSTEM IN ACCORDANCE WITH REFERENCED STANDARDS, APPLICABLE CODES, MANUFACTURER'S RECOMMENDATIONS AND AS INDICATED ON DRAWINGS.
- B. OWNER SHALL TEST AND BALANCE MECHANICAL SYSTEM IN ACCORDANCE WITH NCI OR AABC STANDARDS TO ASSURE CONFORMANCE WITH DESIGN. G.C. WILL MAKE MECHANICAL CONTRACTOR AVAILABLE DURING TEST AND BALANCE TO ASSIST TESTING AGENCY AND TO MAKE CORRECTIONS IMMEDIATELY NECESSARY. CONTRACTOR SHALL CORRECT ITEMS ON WRITTEN TEST AND BALANCE REPORT.
- C. CONTRACTOR SHALL INSTRUCT THE OWNER'S REPRESENTATIVE IN ALL MATTERS PERTAINING TO THE PROPER MAINTENANCE OF EQUIPMENT FURNISHED UNDER THIS CONTRACT THROUGH DEMONSTRATION AND EXPLANATION OF OPERATING & MAINTENANCE MANUALS.
- D. CONTRACTOR SHALL PROVIDE A "SAMPLE MAINTENANCE PROPOSAL" TO THE OWNER'S REPRESENTATIVE IN ALL MATTERS PERTAINING TO THE PROPER MAINTENANCE OF EQUIPMENT FURNISHED UNDER THIS CONTRACT.
- E. CONTRACTOR SHALL COMPLETE A/C EQUIPMENT STARTUP DOCUMENTATION PROVIDED BY OWNER.

3.02 LEED PROJECTS

- A. CONTRACTOR SHALL COMPLETE RECEIPT INSPECTION CHECKLISTS PROVIDED IN THE COMMISSIONING PLAN WITHIN 5 DAYS OF RECEIVING EQUIPMENT ON SITE.
- B. CONTRACTOR SHALL COMPLETE PRE-FUNCTIONAL CHECKLISTS PROVIDED IN THE COMMISSIONING PLAN. CHECKLISTS SHALL BE RETURNED AT LEAST 5 DAYS PRIOR TO SCHEDULING FUNCTIONAL PERFORMANCE TESTING.
- C. CONTRACTOR SHALL PROVIDE A TECHNICIAN TO ASSIST THE THIRD PARTY COMMISSIONING AUTHORITY WITH FUNCTIONAL TESTING. FUNCTIONAL TESTING SHALL OCCUR AFTER ALL CONTROLS HAVE BEEN INSTALLED AND VERIFIED AND AFTER TEST AND BALANCE IS COMPLETE. THE FUNCTIONAL PERFORMANCE TEST PROCEDURES CAN BE FOUND IN THE COMMISSIONING PLAN.
- D. IF THE TOTAL TIME REQUIRED TO CORRECT PROBLEMS DURING TESTING IS GREATER THAN FORTY-FIVE (45) MINUTES (UNLESS EXTENUATING CIRCUMSTANCES EXIST), THE TEST SHALL BE CONSIDERED FAILED AND MUST BE REPEATED IN ITS ENTIRETY.
- E. RE-TESTING: DURING THE COURSE OF THE RETEST, IF AT ANY POINT A MAJOR DEFICIENCY IS DISCOVERED, THE TEST WILL BE STOPPED. REPEAT TESTS UNTIL ACCEPTABLE RESULTS ARE ACHIEVED. IF MORE THAN TWO FUNCTIONAL PERFORMANCE TESTS (ONE INITIAL TEST AND ONE RETEST) FOR ANY TYPE OF EQUIPMENT DUE TO ISSUES THAT THE CONTRACTOR HAD DIRECT OR INDIRECT CONTROL OVER ARE REQUIRED, THE COSTS FOR THE CXA TO WITNESS RETESTING OF SIMILAR TYPES OF EQUIPMENT UNTIL SATISFACTORY RESULTS ARE OBTAINED SHALL BE THE RESPONSIBILITY OF THE CONTRACTOR.

NATIONAL ACCOUNTS

| | | | |
|----|--|----|---|
| 1. | LENNOX EQUIPMENT - CONTACT LENNOX NATIONAL ACCOUNTS AT 972-497-6260 (OR BY FAX AT 972-497-5112) FOR PRICING, ORDERING AND AVAILABILITY. LENNOX EQUIPMENT NOT PURCHASED THRU LENNOX NATIONAL ACCOUNTS WILL NOT BE ACCEPTED. | 5. | SUNCOAST ENVIRONMENTAL CONTROLS - THE CFA ADD-ON PANEL AND THE TEST/RESET STATIONS WILL BE PURCHASED AND PROVIDED BY THE MECHANICAL CONTRACTOR AS A PART OF A NATIONAL ACCOUNT PACKAGE. SEE PART II PARAGRAPH 3A, 3D, AND 3E OF THE MECHANICAL SPECIFICATIONS FOR MORE INFORMATION. |
| 2. | LOREN COOK FAN AND CURB PACKAGE - THE MECHANICAL CONTRACTOR IS REQUIRED TO PURCHASE THE FAN/CURB PACKAGE DIRECTLY FROM TOM BARROW COMPANY. CONTACT MR. SCOTT GEORGE AT 404-351-0101 FOR PRICING AND AVAILABILITY. FANS AND CURBS NOT PURCHASED THRU TOM BARROW COMPANY WILL NOT BE ACCEPTED. | 6. | HALTON HOODS - CHICK-FIL-A WILL PURCHASE AND PROVIDE THE HOODS FOR INSTALLATION BY THE MECHANICAL CONTRACTOR. THE MECHANICAL CONTRACTOR SHALL BE RESPONSIBLE FOR RECEIVING THE HOODS. CONTACT HALTON CO. AT 270-237-5600 FOR MORE INFO. |
| 3. | PRICE AIR DEVICES - THE MECHANICAL CONTRACTOR IS REQUIRED TO PURCHASE THE AIR DEVICES DIRECTLY FROM TOM BARROW COMPANY. CONTACT MR. SCOTT GEORGE AT 404-351-0101 FOR PRICING AND AVAILABILITY. AIR DEVICES NOT PURCHASED THRU TOM BARROW COMPANY WILL NOT BE ACCEPTED. | 7. | JER-AIR START COLLARS - THE MECHANICAL CONTRACTOR IS REQUIRED TO PURCHASE THE START COLLARS DIRECTLY FROM TOM BARROW COMPANY. CONTACT MR. SCOTT GEORGE AT 404-351-0101 FOR PRICING AND AVAILABILITY. START COLLARS NOT PURCHASED THRU TOM BARROW COMPANY WILL NOT BE ACCEPTED. |
| 4. | AIR DOORS - THE MECHANICAL CONTRACTOR IS REQUIRED TO PURCHASE THE AIR DOORS DIRECTLY FROM TOM BARROW COMPANY. CONTACT MR. SCOTT GEORGE AT 404-351-0101 FOR PRICING AND AVAILABILITY. AIR DOORS NOT PURCHASED THRU TOM BARROW COMPANY WILL NOT BE ACCEPTED. | | |



5200 Buffington Rd.
Atlanta Georgia,
30349-2998

Revisions:
Mark Date By

| | | | |
|---|--|--|--|
| △ | | | |
| △ | | | |
| △ | | | |
| △ | | | |
| △ | | | |
| △ | | | |

Kurzynske & Associates
CONSULTING ENGINEERS
825 Third Avenue, South
Nashville, Tennessee 37210
Telephone: (615) 255-5203
Fax: (615) 255-5207
Email: mail@kurzysnke.com

STORE
Joppa Road
FSR #1941
2008 E. Joppa Rd.
Parkville, MD
21234

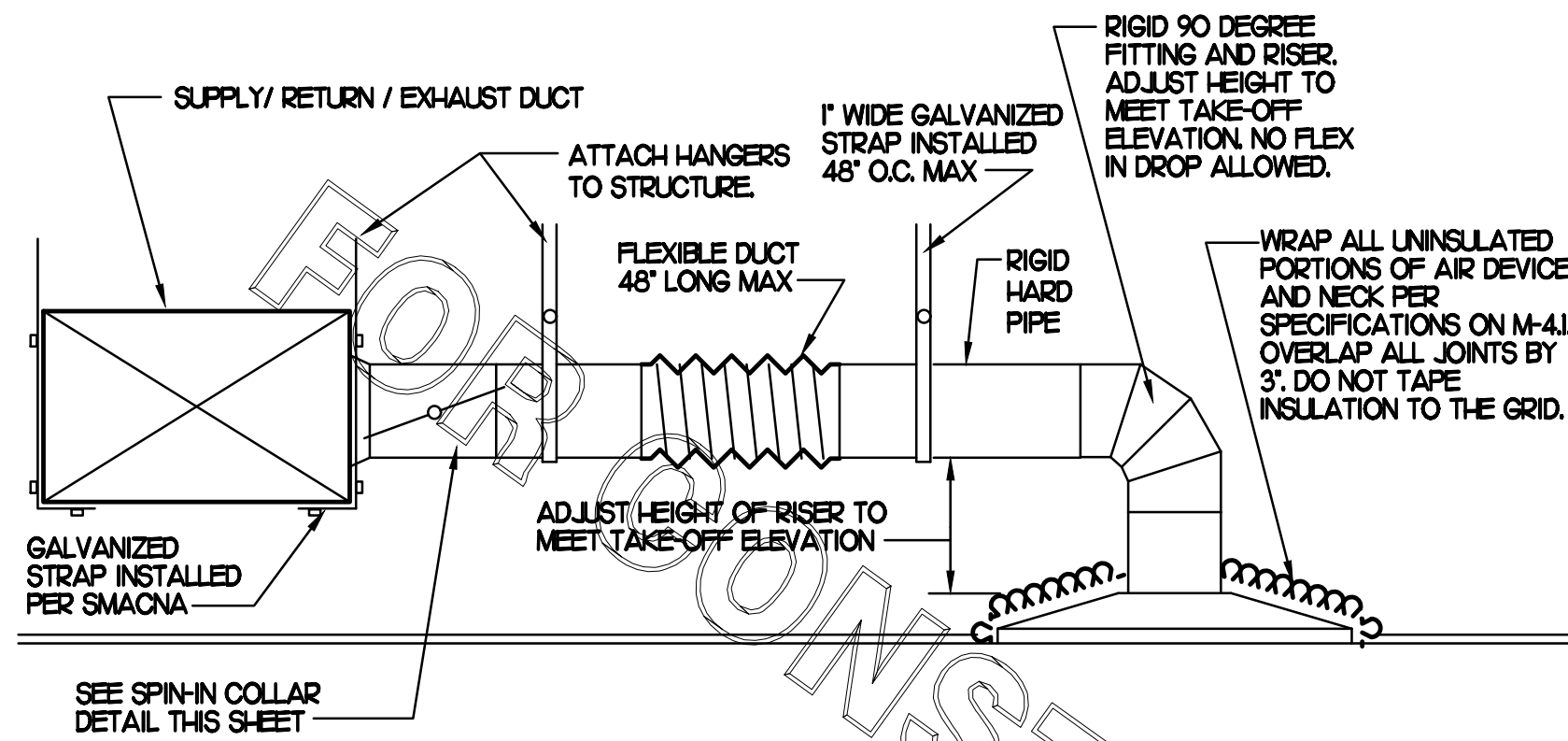
SHEET TITLE
MECHANICAL
SPECIFICATIONS

VERSION S06-E
ISSUE DATE

Job No. : CFHF1511
Store : #1941
Date : 08.28.15
Drawn By : BM
Checked By: MK

Sheet

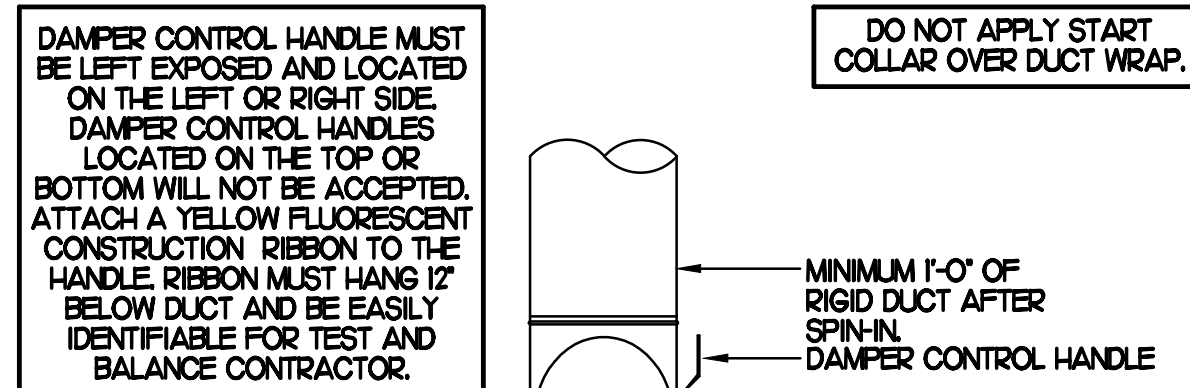
M5.I



1 SAG/RAG/GRILLE TAKE-OFF

NO SCALE

CHICK-FIL-A HAS A NATIONAL ACCOUNT WITH TOM BARRON COMPANY FOR THE JER-AIR START COLLARS. THE MECHANICAL CONTRACTOR IS REQUIRED TO PURCHASE THE JER-AIR START COLLARS DIRECTLY FROM TOM BARRON COMPANY. CONTACT MR. SCOTT GEORGE AT 404-351-0101 FOR PRICING AND AVAILABILITY. JER-AIR START COLLARS NOT PURCHASED THRU TOM BARRON COMPANY WILL NOT BE ACCEPTED.



2 START COLLAR

NO SCALE

GAS FIRED ROOFTOP UNIT SCHEDULE

| MARK | COOLING CAPACITY (MBH) | | HEATING CAPACITY (MBH) | | FAN SECTION (CFM) | | | MODEL | MANUFACTURER | REMARKS |
|-----------------|------------------------|------|------------------------|--------|-------------------|-------|--------|------------|--------------|---------|
| | TOTAL | SENS | INPUT | OUTPUT | SUPPLY | O.A. | HP ESP | | | |
| ACH (NEW) | 2780 | 2029 | 480.0 | 384.0 | 8,000 | 2,050 | 75 12 | LGH800S4B | LENNOX | I-9 |
| ACH2 (EXISTING) | - | - | - | - | 2,830 | 750 | - | LGAI0242B | LENNOX | 10 |
| ACH3 (EXISTING) | - | - | - | - | 5,000 | 1,355 | - | LGCI050S2B | LENNOX | 10 |
| ACH4 (EXISTING) | - | - | - | - | 1,800 | 300 | - | LSAG060H2B | LENNOX | 10 |

NOTES:

- COOLING CAPACITIES ARE GROSS, BASED ON INDOOR EDB: 80F, INDOOR EWB: 67F, OUTDOOR EDB: 95F.
- CHICK-FIL-A MAINTAINS A NATIONAL ACCOUNT FOR EQUIPMENT WITH LENNOX CORPORATION. CONTACT LENNOX NATIONAL ACCOUNTS AT 972-497-6219 (OR BY FAX AT 972-497-5112) FOR PRICING, ORDERING AND AVAILABILITY.
- MECHANICAL CONTRACTOR TO VERIFY LENNOX SUBMITTAL WITH CONSTRUCTION DOCUMENTS.
- FOR PROPER BUILDING AIR BALANCE, VERIFY AMOUNT OF OUTSIDE AIR PROVIDED BY ALL EXISTING UNITS. ADJUST AS PER SCHEDULE WHERE NECESSARY.
- VERIFY MIN. 10' DISTANCE OF O.A. INTAKE OPENINGS OF A/C UNITS FROM ANY EXISTING SOURCE OF AIR POLLUTION (EXHAUST FAN, COMBUSTION FLE, VENT ETC). IF SUCH CONDITIONS EXIST, CONTRACTOR IS REQUIRED TO DUCT OUTSIDE AIR INTAKE ON ROOF AWAY FROM ANY SUCH SOURCE.

REMARKS:

- PROVIDE DIFFERENTIAL ENTHALPY ECONOMIZER WITH POWER EXHAUST.
- PROVIDE FACTORY INSTALLED AND UNIT POWERED 15V GFI SERVICE OUTLET.
- PROVIDE FACTORY INSTALLED RETURN SIDE SMOKE DETECTOR.
- PROVIDE FACTORY INSTALLED NON-FUSED DISCONNECT.
- PROVIDE 2" MERV 8 THROW AWAY FILTERS.
- PROVIDE HINGED PANELS FOR FILTER ACCESS, FAN MOTOR ACCESS, COMPRESSOR ACCESS AND CONTROL COMPARTMENT ACCESS.
- PROVIDE FACTORY COIL, HAIL GUARD, FIELD INSTALLED.
- PROVIDE FRESH AIR TEMPERING KIT.
- PROVIDE HUMIDITROL OPTION AND RECONNECT TO EXISTING REMOTE HUMIDITY SENSOR.
- VERIFY THAT VOLUME OF SUPPLY/RETURN/OUTSIDE AIR PROVIDED BY EXISTING AIR HANDLING UNITS IS AS PER SCHEDULE. RE-BALANCE/RE-ADJUST WHERE NECESSARY.

SPLIT SYSTEM HEAT PUMP UNIT SCHEDULE

| MARK | COOLING CAPACITY (MBH) | | HEATING CAPACITY | | | | FAN SECTION (CFM) | | | ELECTRICAL DATA | | R-410A MODEL | MFR | REMARKS | | | | |
|------------|------------------------|------|------------------|------------|------|----------|-------------------|--------|--------|-----------------|-----|--------------|------|---------|-----------|-------------|--------------|-----------|
| | TOTAL | SENS | SEER | TOTAL * 47 | HSPF | COP * 47 | ALX. HEAT (KW) | STAGES | SUPPLY | O.A. | HP | | | | ESP | MCA | MOCF | VOLTAGE |
| AHUH (NEW) | - | - | - | - | - | - | 8.0 * 208V | 1 | 600 | 75 | 1/2 | 50 | 41.0 | 45 | 208V/60 | CBKZUJH-024 | LENNOX | L23.5.6.9 |
| CUH (NEW) | 19.8 | 15.2 | 15.0 | 17.7 MBH | 8.0 | 3.6 | - | - | - | - | - | 12.3 | 20 | 208V/60 | 14-FX-018 | LENNOX | 3.45.6.7.8.9 | |

NOTES:

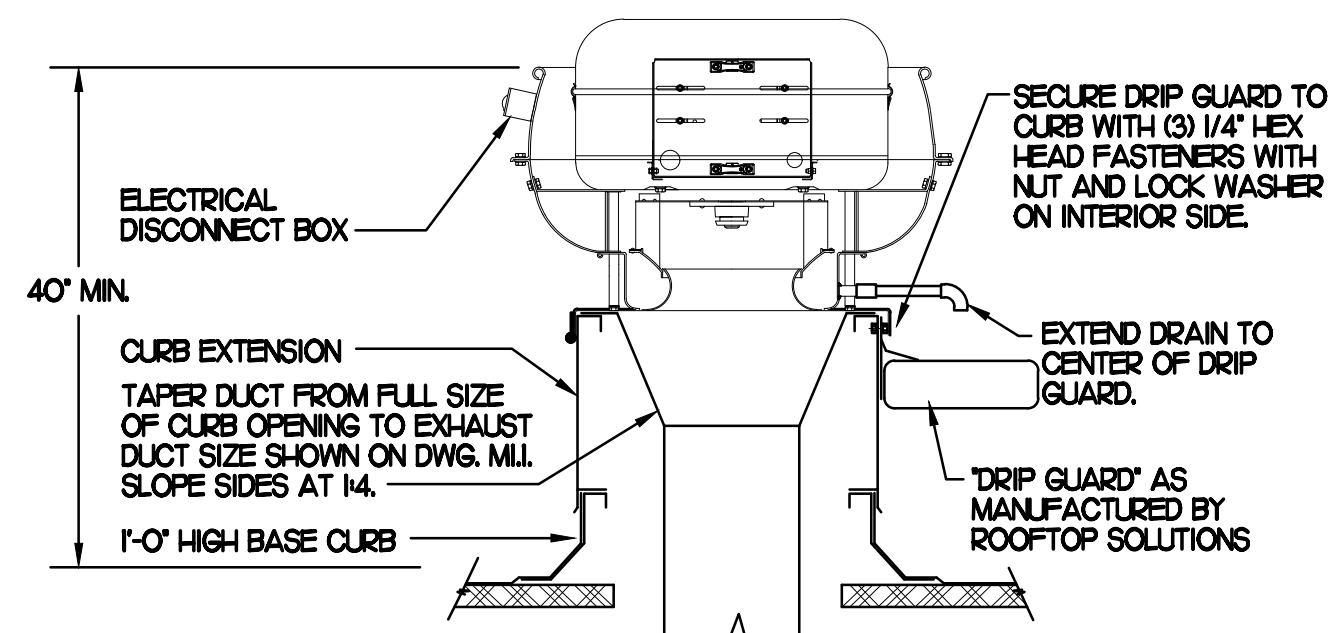
- COOLING CAPACITIES ARE GROSS, BASED ON INDOOR 75FDB/63FPWB, OUTDOOR: 95FDB, AT ARI CONDITION OF 400 CFM/TON.
- CHICK-FIL-A MAINTAINS A NATIONAL ACCOUNT FOR EQUIPMENT WITH LENNOX CORPORATION. CONTACT LENNOX NATIONAL ACCOUNTS AT 972-497-6260 (OR BY FAX AT 972-497-5112) FOR PRICING, ORDERING AND AVAILABILITY.

REMARKS:

- CABINET CONFIGURED FOR LEFT HAND HORIZONTAL DISCHARGE.
- FIELD PROVIDED AND INSTALLED RETURN SIDE SMOKE DETECTOR.
- PROVIDE FIELD INSTALLED NON-FUSED DISCONNECT AT AHUH AND CUH.
- PROVIDE COIL HAIL GUARD.
- REFRIGERANT PIPING AS PER MANUFACTURER'S RECOMMENDATIONS.
- PROVIDE ENGRAVED PLASTIC LABEL AT CUH AND AHUH WITH HIGH WHITE LETTERS ON A BLACK BACKGROUND RIVETED TO UNIT CABINET.
- FACTORY INSTALLED CRANKCASE HEATERS AND FREEZE STAT.
- FACTORY INSTALLED LOW AMBIENT CONTROLS FOR OPERATION DOWN TO 30 DEGREES F.
- FACTORY PROVIDED, FIELD INSTALLED ELECTRIC HEAT.
- FACTORY PROVIDED MOUNTING BASE.

HINGED SIDE OF EXHAUST FANS MUST FACE DRIVE THRU SIDE OF BUILDING.

SECURE FAN TO CURB W/ #12X1/2" SHEET METAL SCREWS ON 1'-0" CENTERS.

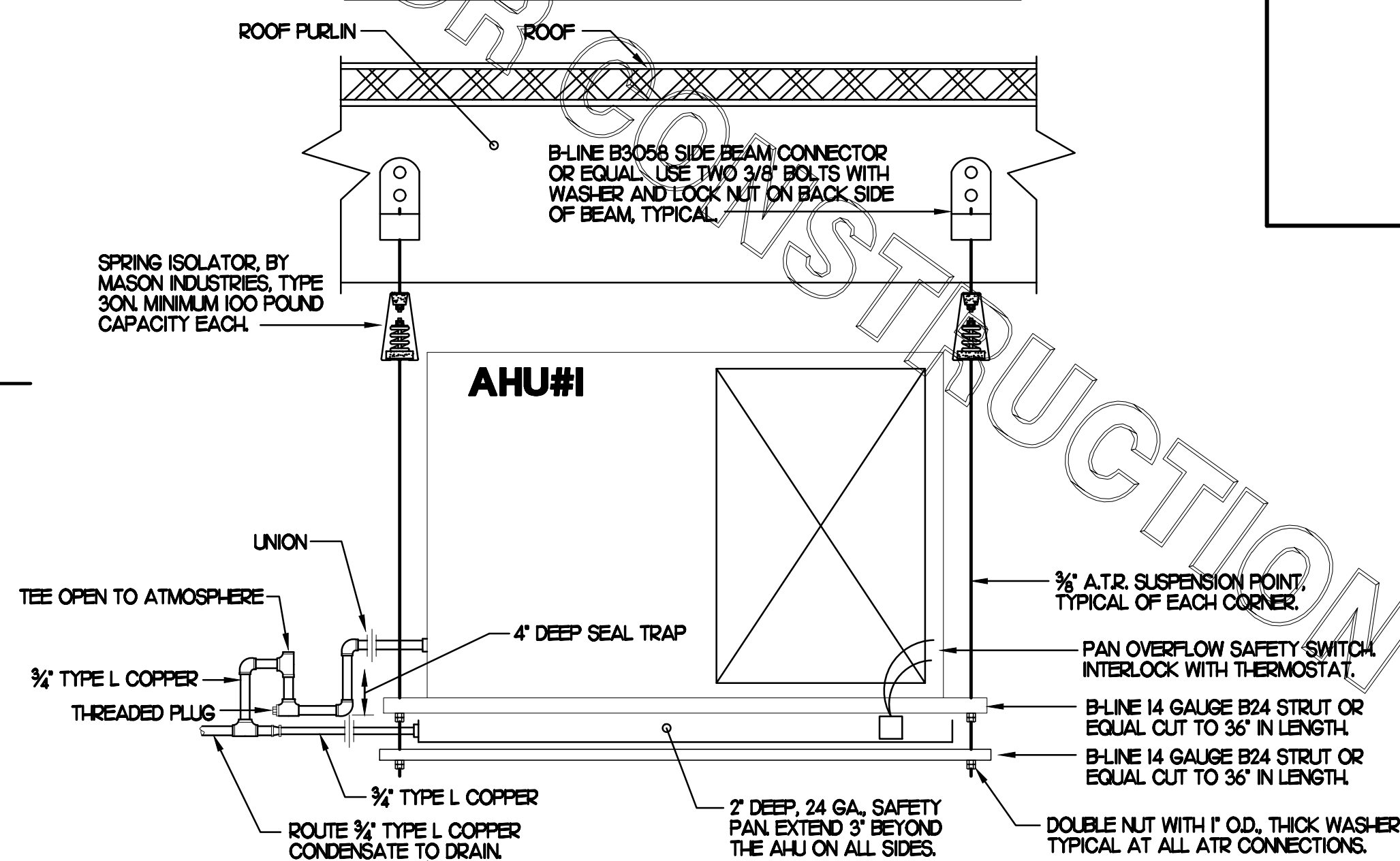


3 KITCHEN HOOD EXHAUST FAN

NO SCALE

AHU INSTALLATION NOTES

- SUPPORT AHU FROM STRUCTURE WITH 3/8"-16 ALL-THREAD AT FOUR CORNERS.
- USE GRADE 3 STEEL, NYLON BUSHED, LOCK NUTS AT EACH THREADED CONNECTION.
- PROVIDE OVERFLOW SWITCH IN SAFETY PAN, SWITCH ACTIVATION TO SHUT DOWN BOTH CU AND AHU, NOT JUST THE AHU.
- LOCATE ALL-THREAD RODS SO THAT ACCESS TO THE UNIT IS NOT IMPAIRED IN ANY WAY.
- ROUTE REFRIGERANT AND CONDENSATE PIPING SO AS NOT TO INTERFERE WITH MAINTENANCE ACCESS TO THE FAN COIL UNIT.



4 AHU#1 INSTALLATION DETAIL

NO SCALE

AIR DOOR SCHEDULE

| MARK | CFM | VELOCITY | HEATING CAP | HP | AREA SERVED | MODEL | MANUFACTURER | REMARKS |
|-----------|-------|----------|-------------|-----|-------------|--------|--------------|---------|
| AD1 (NEW) | 750 | 3,050 | 7.2 KW | 1/5 | DRIVE THRU | MP-30E | POWERED-AIRE | 12 |
| AD2 (NEW) | 3,867 | 4,26 | NA | 3/4 | REAR DOOR | RBT-48 | POWERED-AIRE | 3 |

NOTES:

- CHICK-FIL-A HAS A NATIONAL ACCOUNT WITH TOM BARRON COMPANY FOR THE AIR DOORS. THE MECHANICAL CONTRACTOR SHALL PURCHASE THE AIR DOORS DIRECTLY FROM TOM BARRON COMPANY. CONTACT MR. SCOTT GEORGE AT 404-351-0101, FOR PRICING AND AVAILABILITY. AIR DOORS NOT PURCHASED THRU TOM BARRON COMPANY WILL NOT BE ACCEPTED.

REMARKS:

- FACTORY PROVIDED, WIRED, AND UNIT MOUNTED THERMOSTAT LOCATED ON RIGHT SIDE.
- FACTORY PROVIDED, WIRED, AND UNIT MOUNTED SPEED CONTROLLER LOCATED ON BOTTOM.
- FACTORY PROVIDED MAGNETIC DOOR CONTACT WITH FACTORY INSTALLED LOW VOLTAGE CONTROLS LOCATED IN AIR DOOR CABINET.

EXHAUST FAN SCHEDULE

| MARK | CFM | ESP | RPM | TIP SPEED (FFM) | HP (WATTS) | AREA SERVED | MODEL | MANUFACTURER | REMARKS |
|-----------------|-------|------|-------|-----------------|------------|-------------|------------|--------------|-----------|
| EF#1 (NEW) | 1,700 | 0.65 | 964 | 4,164 | 1/2 | HOOD#1 | 165 VCR-FP | LOREN COOK | L23.4.5.6 |
| EF#2 (NEW) | 701 | 0.75 | 1,238 | 4,861 | 1/3 | HOOD#2 | 150 VCR-FP | LOREN COOK | L23.4.5.6 |
| EF#3 (EXISTING) | 485 | - | - | - | - | RESTROOMS | - | - | 7 |
| EF#4 (NEW) | 804 | 0.75 | 1,295 | 5,085 | 1/3 | HOOD#3 | 150 VCR-FP | LOREN COOK | L23.4.5.6 |

NOTES:

- GREASE EXHAUST FAN RPM BASED ON 80 DEGREE F AIR AT 1000 FEET ABOVE SEA LEVEL.
- GREASE EXHAUST FANS TO BE UL 762 LISTED.
- CHICK-FIL-A HAS A NATIONAL ACCOUNT WITH TOM BARRON COMPANY FOR FAN/CURB PACKAGE. MECHANICAL CONTRACTOR IS REQUIRED TO PURCHASE THE FAN/CURB PACKAGE DIRECTLY FROM TOM BARRON COMPANY. CONTACT MR. SCOTT GEORGE AT 404-351-0101 FOR PRICING AND AVAILABILITY. FANS AND CURBS NOT PURCHASED THRU TOM BARRON COMPANY WILL NOT BE ACCEPTED.

REMARKS:

- PROVIDE FACTORY 1'-0" BASE CURB AND EXTENSION.
- PROVIDE FACTORY INSTALLED NEMA 3 NON-FUSED DISCONNECT. COORDINATE WITH E.C.
- PROVIDE FACTORY INSTALLED, HINGED BASE KIT.
- PROVIDE AND INSTALL ROOFTOP SOLUTIONS G2 DRIP GUARD. MECHANICAL CONTRACTOR TO CONTACT ROOFTOP SOLUTION AT 800-913-7034.
- PROVIDE FACTORY INSTALLED HELICAL SPRING AUTOMATIC BELT TENSIONER.
- INTEGRAL THERMAL OVERLOAD WITH AUTOMATIC RESET.
- EXHAUST FAN IS EXISTING TO REMAIN. FOR STORE BALANCE FIELD VERIFY AIR BALANCE IS AS SHOWN. REBALANCE/READJUST WHERE NECESSARY.

AIR DEVICE SCHEDULE

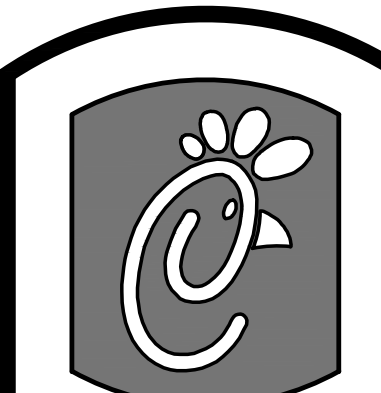
| MARK | DESCRIPTION | LOCATION | NECK SIZE | FACE SIZE | FRAME TYPE | REMARKS |
|------|---|-------------------------|-----------|-----------|------------|---------|
| A | PRICE MODEL APDSP ALUMINUM SUPPLY AIR DIFFUSER WITH AIR PATTERN CONTROLLER. | ADDITION KITCHEN | SEE PLAN | 24X24 | LAY-IN | 12 |
| B | PRICE MODEL APDSP ALUMINUM SUPPLY AIR DIFFUSER WITH AIR PATTERN CONTROLLER REMOVED. | KITCHEN | SEE PLAN | 24X24 | LAY-IN | 12 |
| F | PRICE MODEL 80 EGGRATE RETURN AIR GRILLE WITH REMOVABLE WHITE CORE, FACTORY FLAT, BLACK BACKPAN AND ROUND NECK. | OFFICE KITCHEN ADDITION | SEE PLAN | 24X24 | LAY-IN | 12 |
| H | PRICE MODEL APDSP ALUMINUM SUPPLY AIR DIFFUSER WITH AIR PATTERN CONTROLLER. | OFFICE | SEE PLAN | 24X24 | LAY-IN | 123 |

NOTES:

- MECHANICAL CONTRACTOR SHALL PURCHASE THE AIR DEVICES DIRECTLY FROM TOM BARRON COMPANY. CONTACT MR. SCOTT GEORGE AT 404-351-0101, FOR PRICING AND AVAILABILITY. AIR DEVICES NOT PURCHASED THRU TOM BARRON COMPANY WILL NOT BE ACCEPTED.

REMARKS:

- STANDARD OFF WHITE FINISH.
- FACTORY INSULATED R-6 BACKPAN.
- PROVIDE VCR7 NECK, DAMPER, ADJUSTABLE THRU DIFFUSER FACE.



5200 Buffington Rd.
Atlanta Georgia,
30349-2998

Revisions:
Mark Date By

| Mark | Date | By |
|------|------|----|
| △ | | |
| △ | | |
| △ | | |
| △ | | |
| △ | | |
| △ | | |
| △ | | |

Kurzynske & Associates
CONSULTING ENGINEERS
825 Third Avenue, South
Nashville, Tennessee 37210
Telephone: (615) 255-5203
Fax: (615) 255-5207
Email: mail@kurzynske.com

STORE
Joppa Road
FSR #1941
2008 E. Joppa Rd.
Parkville, MD
21234

SHEET TITLE
HVAC DETAILS
& SCHEDULES

VERSION S06-E
ISSUE DATE

Job No. : CFHF1511
Store : #1941
Date : 08.28.15
Drawn By : BM
Checked By : MK

Sheet

M.B.I.

KITCHEN HOOD SYSTEMS NOTES

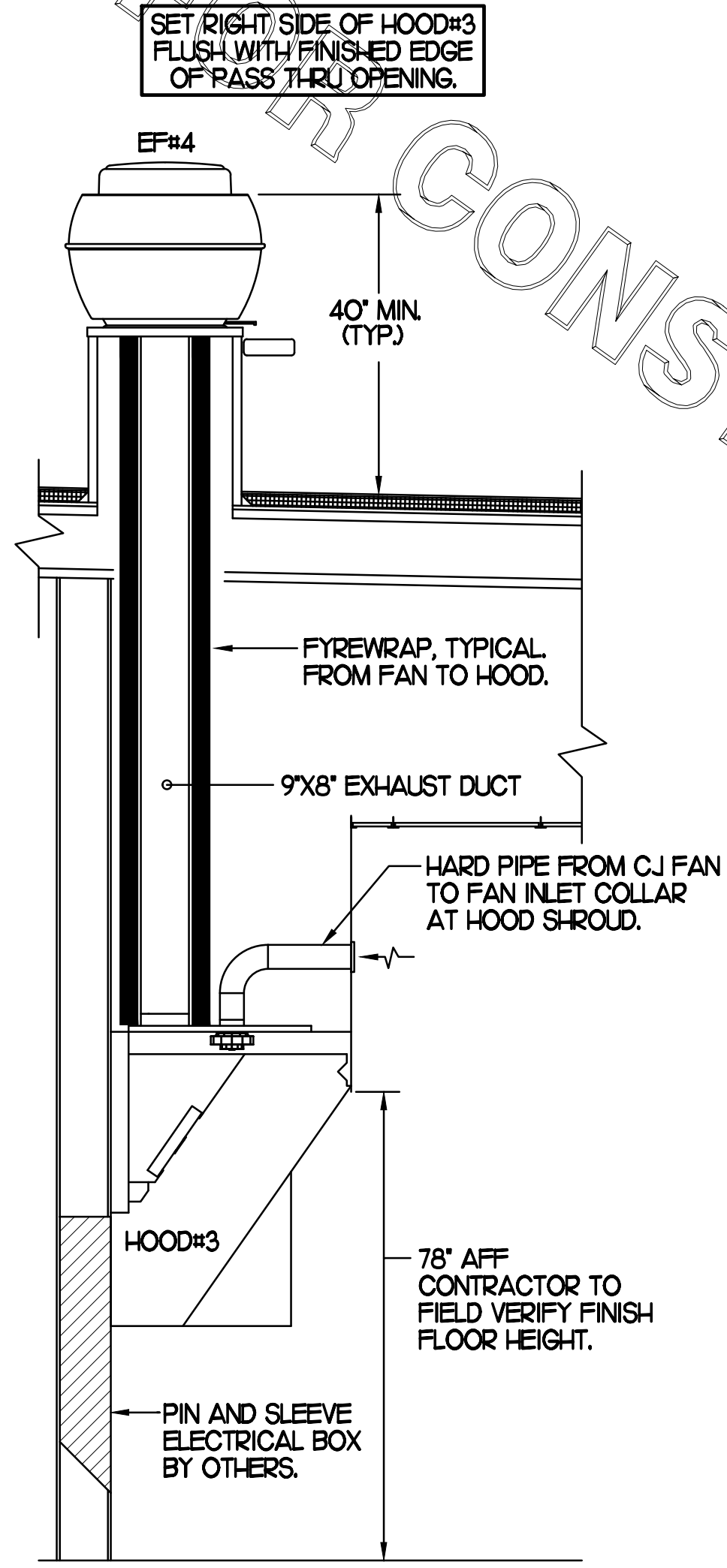
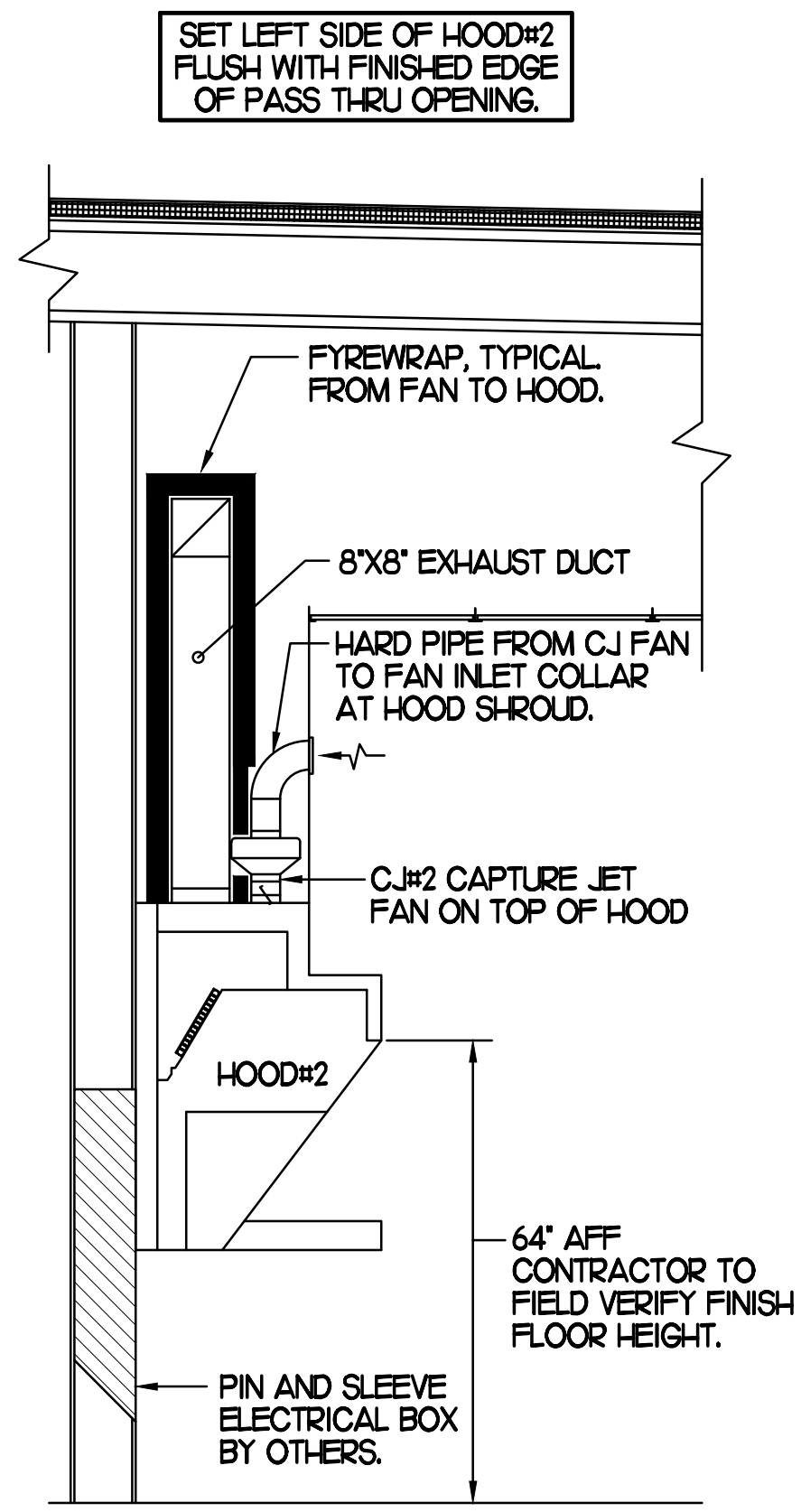
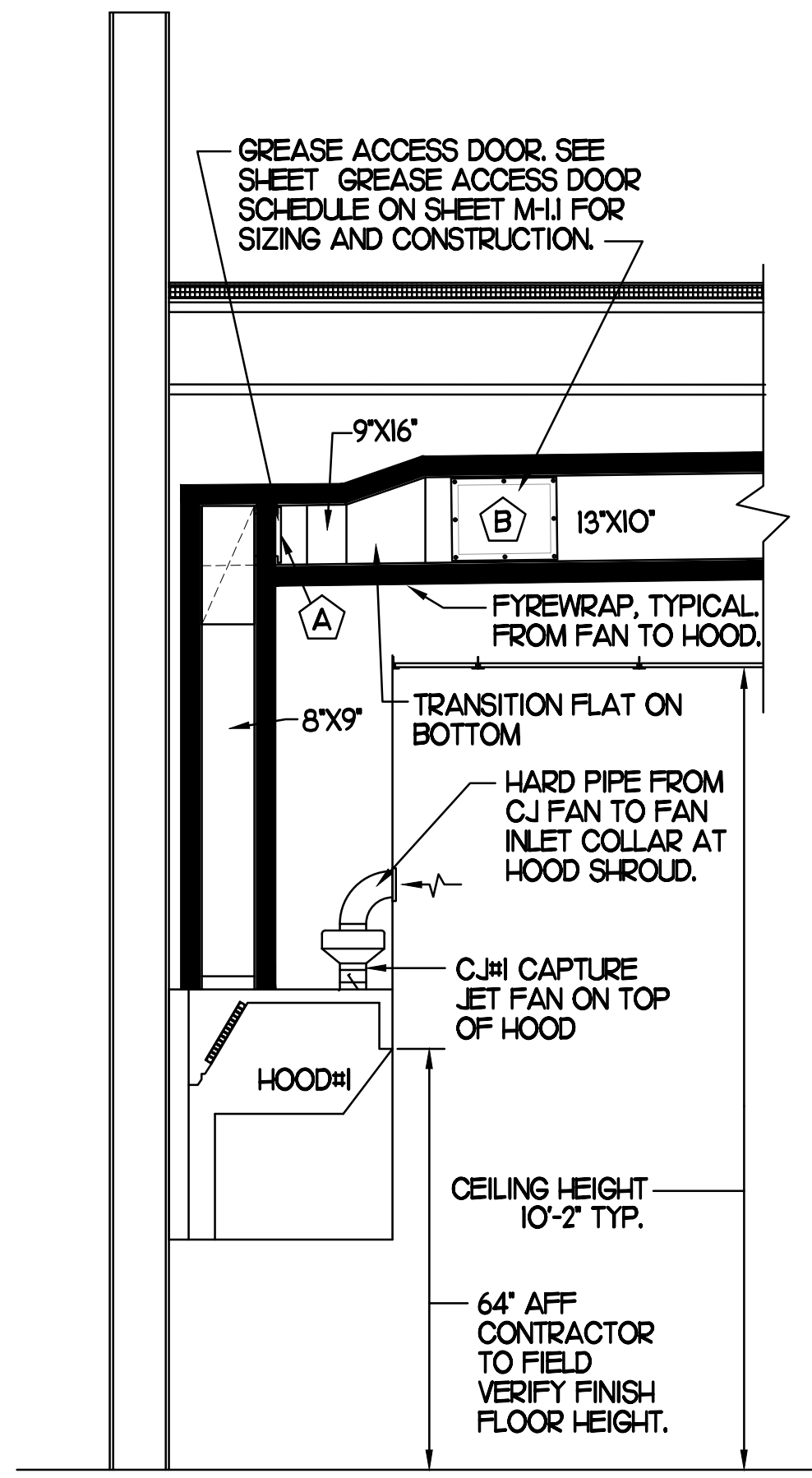
1. CHICK-FIL-A MAINTAINS A NATIONAL ACCOUNT WITH HALTON CO. FOR THE HOODS. CHICK-FIL-A WILL PURCHASE AND PROVIDE THE HOODS FOR INSTALLATION BY THE MECHANICAL CONTRACTOR. THE MECHANICAL CONTRACTOR SHALL BE RESPONSIBLE FOR RECEIVING THE HOODS. CONTACT HALTON CO. AT 270-237-5600 FOR MORE INFO.
2. THE FIRE SUPPRESSION SYSTEM SHALL CONSIST OF A COMPLETE WET ANSUL SYSTEM FURNISHED BY HALTON. THE HOOD SHALL BE FURNISHED PRE-PIPED BY HALTON.
3. THE R-102 ANSUL FIRE SUPPRESSION SYSTEM EXTERNAL TO THE HOODS SHALL BE INSTALLED IN ACCORDANCE WITH HOOD MANUFACTURER'S SHOP DRAWINGS BY AN AUTHORIZED ANSUL SYSTEM INSTALLER SELECTED AND HIRED BY HALTON. COST FOR ANSUL INSTALLATION INCLUDED IN PRICE OF HOODS TO CFA.
4. HOOD EXHAUST DUCTWORK SHALL BE 16 GA. BLACK STEEL WITH CONTINUOUS LIQUID TIGHT WELD OF JOINTS & SEAMS.
5. TURNS IN GREASE EXHAUST DUCTWORK SHALL BE LONG RADIUS TYPE, WITH A CENTERLINE RADIUS R=3W/2 UNO, NO EXCEPTIONS ALLOWED. NO MITERED FITTINGS ALLOWED.
6. ALL STAINLESS STEEL CLOSURE PANELS SHALL BE SUPPLIED BY HOOD MANUFACTURER AND INSTALLED BY THE MECHANICAL CONTRACTOR ACCORDING TO MANUFACTURER'S RECOMMENDATIONS.
7. SLOPE ALL GREASE EXHAUST DUCT BACK TO HOOD AT 1/4" PER FOOT OF RUN.
8. WRAP NEW GREASE DUCT WITH UNIFRAX FYREWAP. INSULATION ON ACCESS DOORS SHALL BE INSTALLED ACCORDING TO MANUFACTURER'S INSTALLATION RECOMMENDATIONS. UNIFRAX FYREWAP PRODUCT USED SHALL MEET LOCAL CODE REQUIREMENTS.
9. SUPPORT HOODS WITH THREADED ROD AT EACH FACTORY SUPPORT POINT. EACH SUPPORT POINT MUST SUPPORT THE HOOD WEIGHT EQUALLY. ATTACH TO STRUCTURE AS DETAILED ON STRUCTURAL DRAWING S5-1. ATTACH HOOD TO WALL AT 16" INTERVALS ALONG FULL LENGTH OF HOOD ON TOP AND BOTTOM. ATTACHMENT TO WALL REQUIRES FIELD DRILLING OF SUPPORT ANGLE AT BACK OF HOODS. EACH WALL ATTACHMENT POINT MUST OCCUR AT A WALL STUD. ATTACHMENT HARDWARE TO BE #12-24 HEX HEAD SHEET METAL SCREW EQUAL TO TEXTRON SDS EDT265, LENGTH AS REQUIRED TO FULLY PENETRATE THE STUD.

GREASE EXHAUST DUCT CLEARANCE NOTE

CLEARANCES ABOVE CEILING ARE TIGHT. MECHANICAL CONTRACTOR TO FIELD VERIFY EXACT ROUTING AND CLEARANCES PRIOR TO FABRICATING GREASE EXHAUST DUCT.

CLEANOUT DOOR NOTE

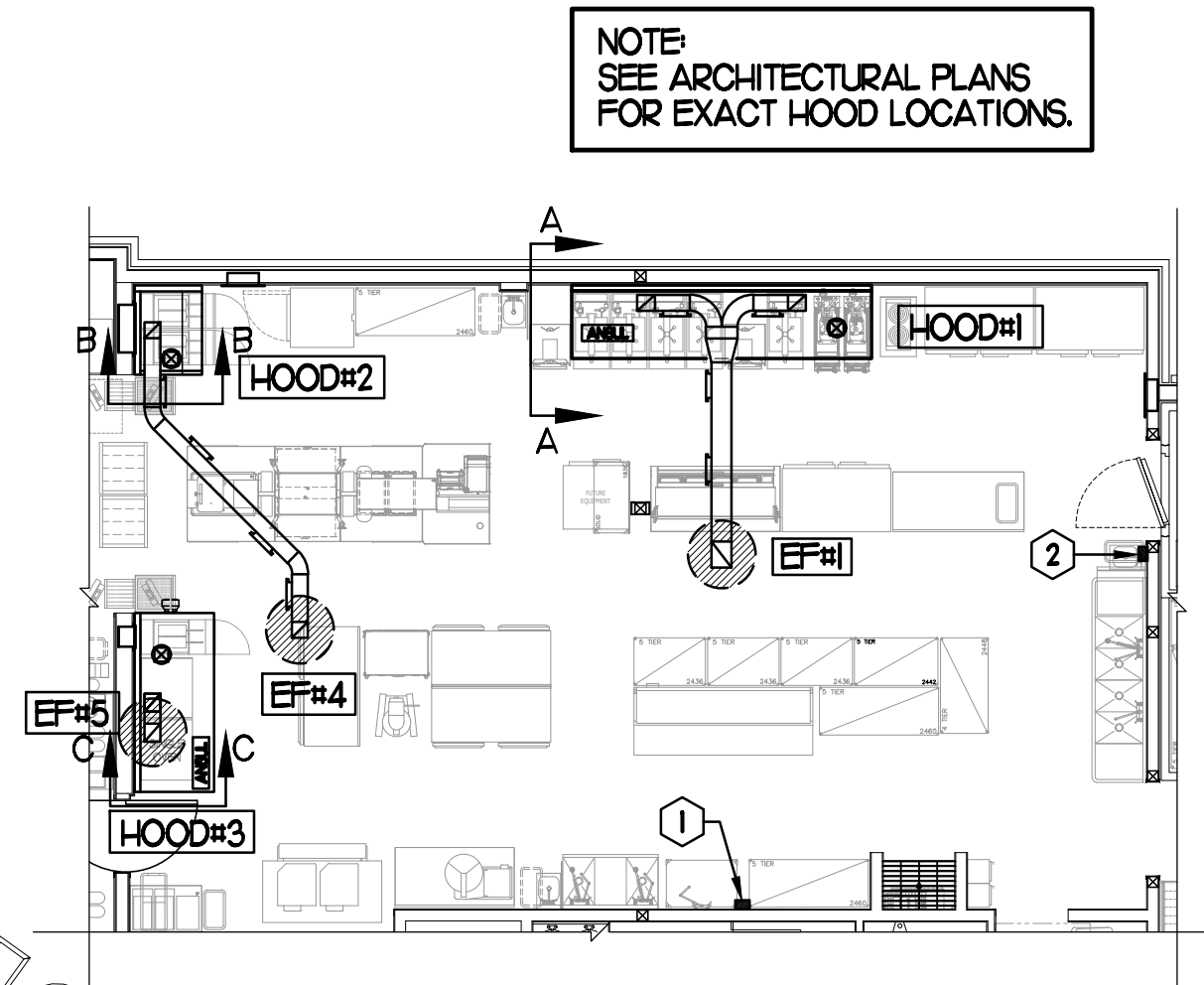
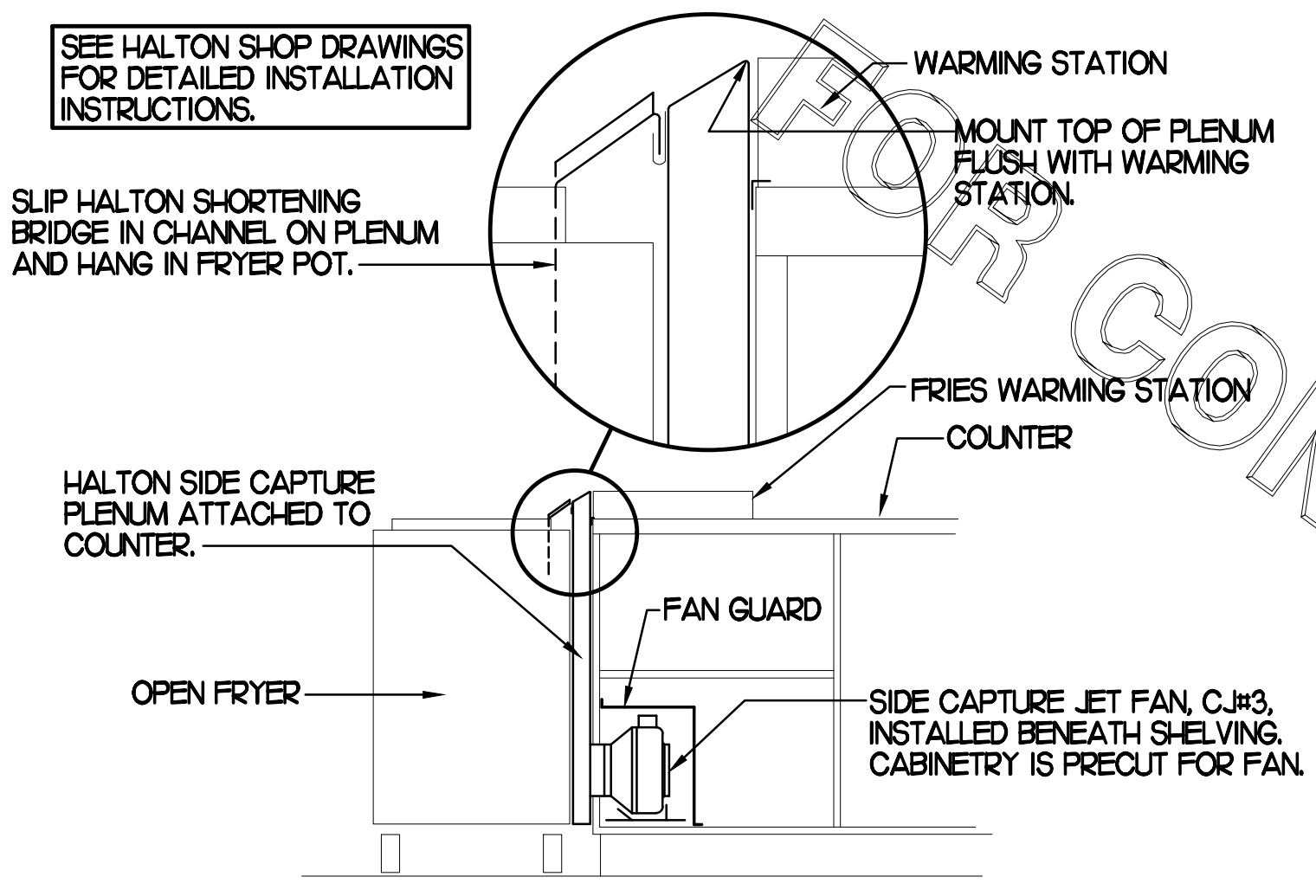
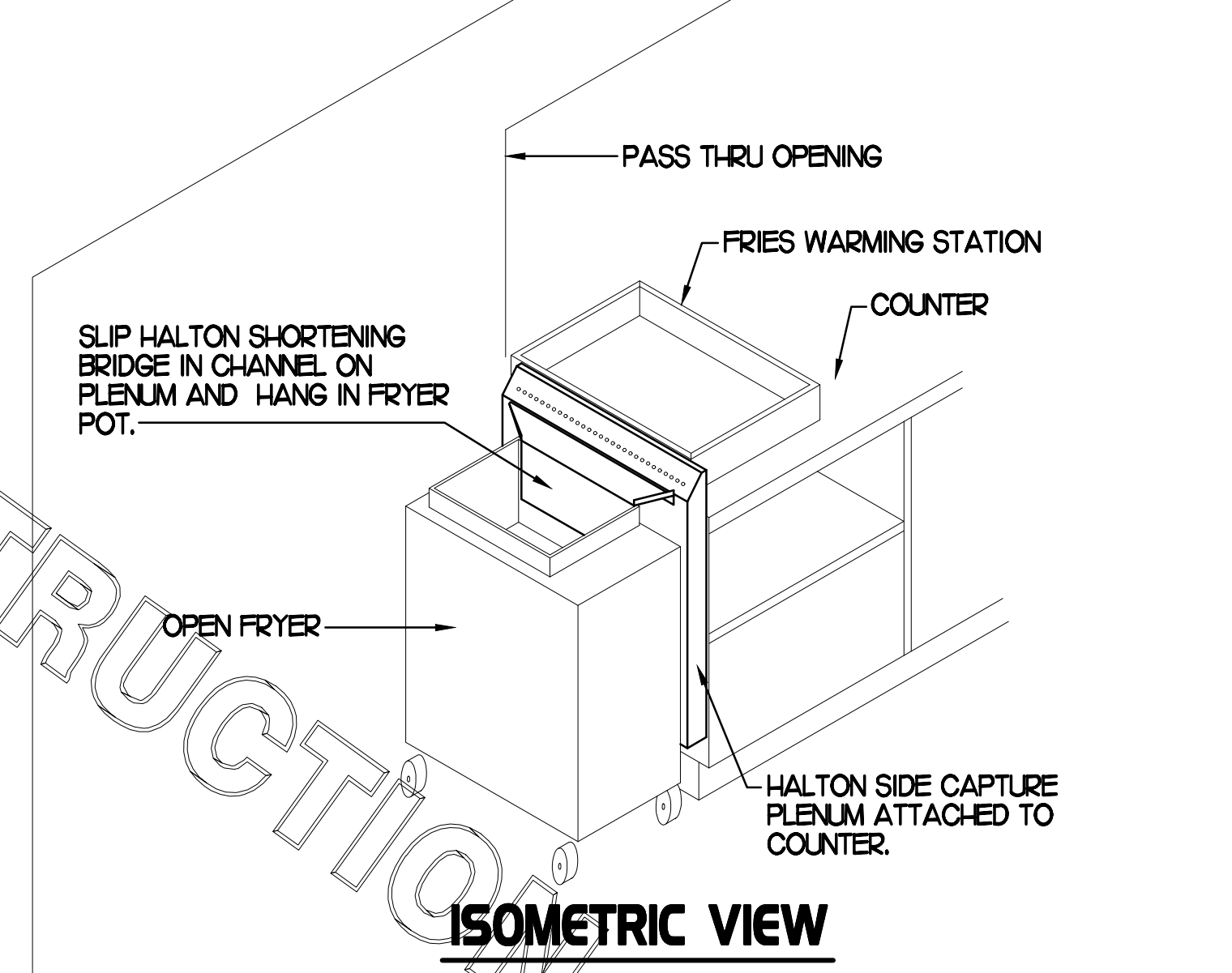
DUCT WRAP SHALL BE APPLIED TO THE CLEANOUT DOOR PER THE WRAP MFR'S INSTALLATION INSTRUCTIONS, NO EXCEPTIONS. ALSO, THE CLEANOUT DOOR MUST BE REMOVABLE WITHOUT TOOLS AND MUST BE CLEARLY AND PERMANENTLY LABELED.



HOOD SCHEDULE

| MARK | EXHAUST CFM | SP * TAB PORT | CAPTURE JET CFM & SP. | TYPE | COLLAR SIZE | WIDTH | DEPTH | HEIGHT | MANUFACTURER | MODEL | REMARKS |
|--------|-------------|---------------|-----------------------|------------|-------------|-------|-------|--------|--------------|-------|--------------------------------|
| HOOD#1 | 1700 | 011" | 113 * 0.30" | BACK SHELF | Ø 8'X9" | 15" | 37" | 38" | HALTON | KVL-2 | 1,4,5,7,10,13,19,20,21,23 |
| HOOD#2 | 701 | 0.26" | 30 * 0.29" | BACK SHELF | 8'X8" | 45" | 34" | 48" | HALTON | KVL-C | 1,2,4,8,9,10,11,13,16,18,19 |
| HOOD#3 | 804 | 0.09" | 68 * 0.45" | CANOPY | 9'X8" | 90" | 40" | 49" | HALTON | KVM | 1,3,4,6,8,12,14,15,16,17,19,22 |

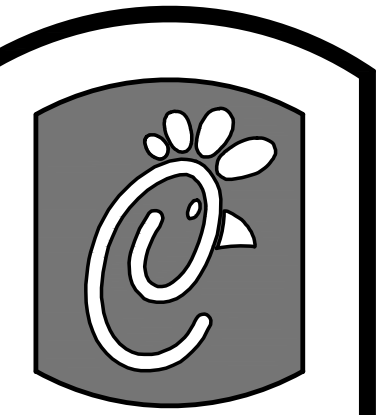
- NOTES**
- DIMENSIONS OF HOODS INCLUDE BACK AND SIDE SPACERS (HEIGHT DOES NOT INCLUDE CLOSURE PANELS).
- REMARKS**
1. STAINLESS STEEL CONSTRUCTION.
 2. PROVIDE FULL HEIGHT SS CLOSURE PANEL WITH ACCESS PANEL IN FRONT LARGE ENOUGH TO REMOVE CAPTURE JET FAN AND ACCESS KBD EQUALIZER JACK SCREW.
 3. PROVIDE FULL HEIGHT SS CLOSURE PANEL WITH ACCESS PANEL IN FRONT LARGE ENOUGH TO SERVICE ANSUL COMPONENTS, TO REMOVE THE CAPTURE JET FAN, AND TO ACCESS KBD EQUALIZER JACK SCREW.
 4. PROVIDE PRE-PIPED ANSUL R-102 WET FIRE EXTINGUISHING SYSTEM.
 5. PROVIDE UTILITY CABINET TO ENCLOSE REMOTE WALL MOUNTED ANSUL COMPONENTS FOR HOOD#1.
 6. ANSUL CABINET AND COMPONENTS ABOVE HOOD ON LEFT SIDE.
 7. PROVIDE 3" BACK SPACER.
 8. PROVIDE 3" CUSTOM BACK SPACER TO ACCOMMODATE PIN AND SLEEVE ELECTRICAL BOX. ZERO CLEARANCE TO COMBUSTIBLE BACK SPACER FOR HOOD#3.
 9. PROVIDE 3" RIGHT SIDE SPACER.
 10. PROVIDE NOTCHED LEFT END SIDE PANEL.
 11. PROVIDE 3'X3' HORIZONTAL AND VERTICAL TRIM ANGLE FOR RIGHT SIDE OF HOOD TO FINISH OFF GAP AT WALL.
 12. PROVIDE SIDE SHIELD ON LEFT SIDE.
 13. PROVIDE TOP PLENUM CAPTURE JET FAN, SPEED CONTROLLER AND COLLAR.
 14. PROVIDE COUNTER MOUNTED SIDE CAPTURE JET PLENUM ASSEMBLY AND FAN ON RIGHT SIDE OF HOOD.
 15. PROVIDE FACTORY INSTALLED CAPTURE JET FAN IN PLENUM.
 16. PROVIDE CAPTURE JET AIR INLET AND COLLAR AT FRONT OF CLOSURE PANEL.
 17. PROVIDE PIN AND SLEEVE ELECTRICAL BOX (SINGLE CONNECTION). SEE ARCHITECTURAL AND ELECTRICAL DRAWINGS FOR ADDITIONAL INFORMATION.
 18. PROVIDE PIN AND SLEEVE ELECTRICAL BOX (DOUBLE CONNECTION). SEE ARCHITECTURAL AND ELECTRICAL DRAWINGS FOR ADDITIONAL INFORMATION.
 19. PROVIDE EQUIPMENT I.D. LABELS LOCATED ON FRONT LEADING EDGE OF HOOD.
 20. PROVIDE SLOPED FALSE TOP AND DUCT ENCLOSURE.
 21. PROVIDE FACTORY WALL MOUNTING ANGLE AT TOP OF HOOD.
 22. PROVIDE NOTCHED RIGHT END SIDE PANEL.
 23. PROVIDE FULL RIGHT END SIDE PANEL.



3 HOOD ELEVATIONS

2 HALTON SIDE CAPTURE JET PLENUM

1 HOOD LAYOUT



Chick-fil-A
5200 Buffington Rd.
Atlanta Georgia,
30349-2998

Revisions:

| Mark | Date | By |
|------|------|----|
| △ | | |
| △ | | |
| △ | | |
| △ | | |
| △ | | |
| △ | | |

Kurzynske & Associates
CONSULTING ENGINEERS
825 Third Avenue, South
Nashville, Tennessee 37210
Telephone: (615) 255-5203
Fax: (615) 255-5207
Email: mail@kurzynske.com

STORE
Joppa Road
FSR #1941
2008 E. Joppa Rd.
Parkville, MD
21234

SHEET TITLE
HOOD DETAILS
& SCHEDULES

VERSION S06-E
ISSUE DATE

Job No. : CFHF1511
Store : #1941
Date : 08.28.15
Drawn By : BM
Checked By : MK

Sheet
M2.1

LENNOX FRESH AIR TEMPERING SETUP

- INSTALL FRESH AIR TEMPERING KIT WIRING HARNESS AS RECOMMENDED BY LENNOX.
- LOCATE SUPPLY AIR TEMPERATURE SENSOR IN SUPPLY DUCT DOWNSTREAM OF FIRST ELBOW. SECURE WIRING TO DUCT OR STRUCTURE WITH RUBBER COATED CLAMPS. DO NOT RUN WIRING INSIDE DUCT WORK. PROTECT ALL WIRING PENETRATIONS WITH RUBBER GROMMETS.
- CHANGE ROOFTOP UNIT ECTO PARAMETER 6.20 TO A VALUE OF 145. THIS WILL PREVENT THE SUPPLY AIR TEMPERATURE FROM DROPPING BELOW 66F DEG DURING HEATING MODE WHEN THERMOSTAT IS NOT ACTIVELY CALLING FOR HEAT. ECTO PARAMETER 6.20 MUST BE CHANGED TO ACTIVATE THE FRESH AIR TEMPERING FEATURE.
- CHANGE ROOFTOP UNIT ECTO PARAMETER 6.21 TO A VALUE OF 21 WHICH WILL MAKE THE DEADBAND VALUE EQUAL 14F.
- CHANGE ROOFTOP UNIT ECTO PARAMETER 6.22 TO A VALUE OF 37 WHICH WILL MAKE THE CYCLE TIME VALUE EQUAL 5 MINUTES.

FACTORY PROVIDED AND MOUNTED THERMOSTAT ON RIGHT SIDE OF UNIT.

GREASE ACCESS DOOR. SEE GREASE ACCESS DOOR SCHEDULE THIS SHEET FOR SIZING AND CONSTRUCTION TYPICAL.

AIR CURTAIN, AD#1, MOUNTED 7'-0" AFF TO BOTTOM OF UNIT.

HOLD DUCT AT AC#1 AS HIGH AS POSSIBLE DUE TO LIMITED CLEARANCE.

EXISTING AC#3

8X9 GREASE DUCT. OFFSET AS NECESSARY TO ROUTE UP THRU EXISTING ROOF OPENING TO NEW EF#4.

NEW LIGHT BY OTHERS.

NEW LIGHT BY OTHERS.

MOUNT REMOTE ANNUNCIATOR FOR AHU#1 ON WALL WITH OTHER EXISTING ANNUNCIATORS.

EXIST. 700 CFM RETURN

ROUTE REFRIGERANT LINE SET THRU ROOF USING PREFAB PIPE CURB.

SHEET NOTES

- DUCT SIZES SERVING DIFFUSERS AND GRILLES ARE SAME SIZE AS DIFFUSER OR GRILLE NECK UNLESS NOTED OTHERWISE.
- REFER TO ELEVATIONS ON M21 AND HOOD DETAILS ON M#11 FOR CAPTURE-JET FANS DUCTING REQUIREMENTS.
- HARDPIPE SHALL BE USED FOR ALL TAKE-OFFS EXCEPT WHERE ALLOWED BY DETAIL 1/M31. USE OF FLEXIBLE DUCT SHALL BE LIMITED TO THOSE SITUATIONS WHERE NO OTHER MEANS TO ACCOMPLISH ROUTING IS POSSIBLE.
- COORDINATE NEW WORK WITH EXISTING CONDUITS, STRUCTURE AND PIPING. FIELD VERIFY EXISTING CONDITIONS PRIOR TO COMMENCING WORK. CONTRACTOR TO NOTIFY DESIGN TEAM WITHOUT DELAY IF ACTUAL LOCATION OF EXISTING MECHANICAL EQUIPMENT DOES NOT MATCH FLOOR PLAN.
- MECHANICAL CONTRACTOR SHALL BALANCE HVAC SYSTEM AS SHOWN ON THIS PLAN & IN SCHEDULES ON SHEET M31. IF AIRFLOWS DIFFER BY MORE THAN 5%, CONTACT CFA CONSTRUCTION MANAGER. TEST AND BALANCE REPORT SHALL BE DONE PRIOR TO STORE TURNOVER AND SUBMITTED TO CFA'S CONSTRUCTION MANAGER.

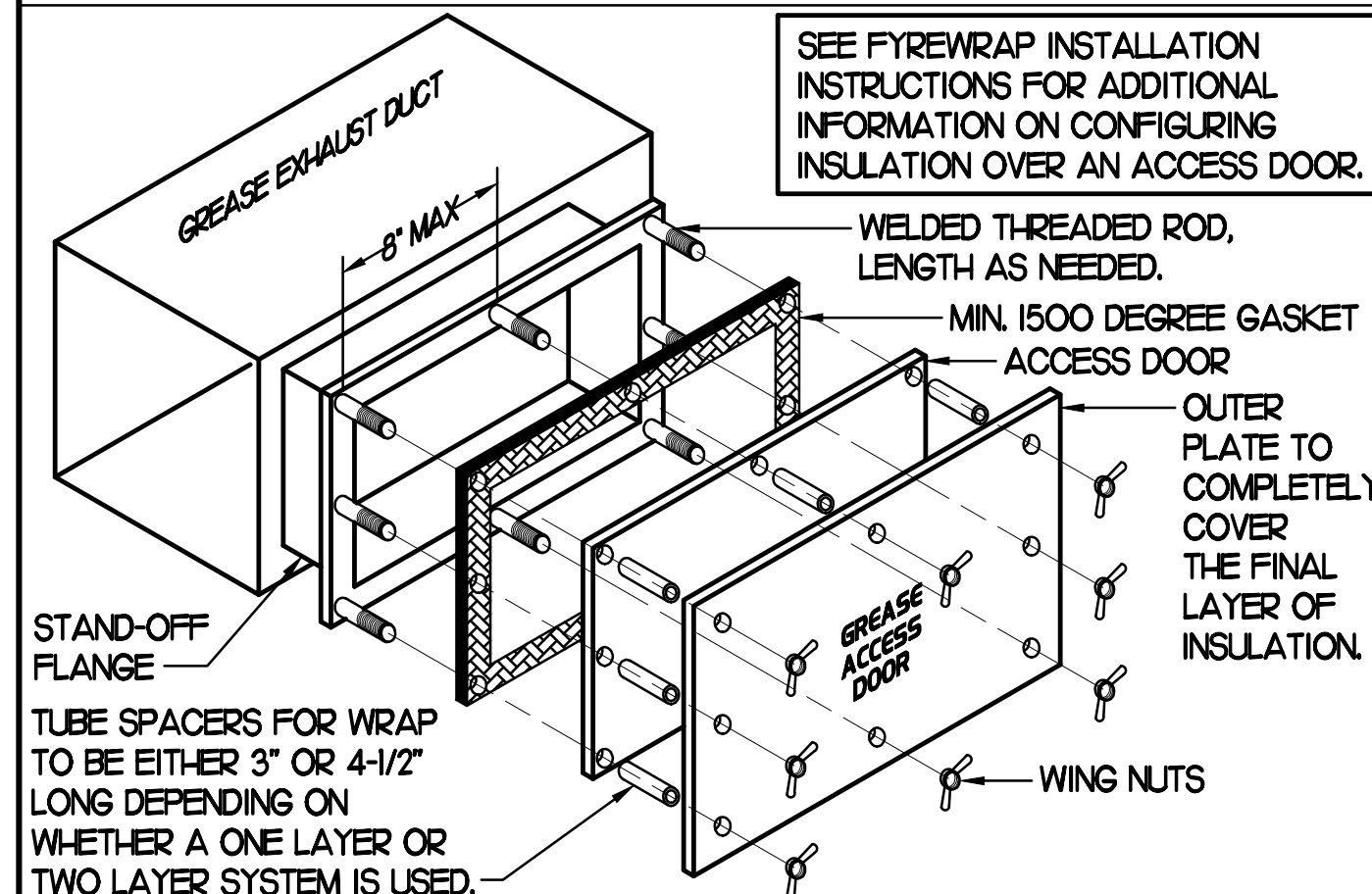
MECHANICAL FLOOR PLAN

SCALE: 1/4"=1'-0"

GREASE ACCESS DOOR SCHEDULE

| MARK | OPENING SIZE | DOOR SIZE | REMARKS |
|------|--------------|-------------|---------|
| A | 6.5H X 14W | 8.5H X 16W | I |
| B | 10.5H X 14W | 12.5H X 16W | I |
| C | 5.5H X 14W | 7.5H X 16W | I |

I. ACCESS DOORS SHALL BE UL 1978 LISTED OR FIELD FABRICATED, REQUIRE NO TOOLS FOR REMOVAL AND MEET THE REQUIREMENTS OF THE CURRENT EDITION OF THE IMC. ACCESS DOOR ASSEMBLY SHALL BE WELDED IN PLACE TO THE GREASE EXHAUST DUCT AND THE ACCESS DOOR SHALL BE SECURED WITH THUMB SCREWS. ACCESS DOORS SHALL BE SEALED WITH A MINIMUM 1500 DEGREE GASKET MATERIAL EQUIVALENT TO THAT MANUFACTURED BY BRETON INDUSTRIES, INC (800) 382-2491.



KEY NOTES (THIS SHEET ONLY)

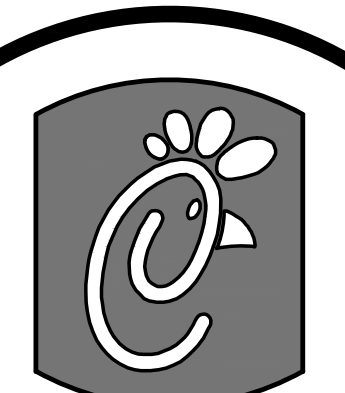
- RELOCATE EXISTING AIR DEVICE TO WHERE SHOWN ON PLAN. MECHANICAL CONTRACTOR SHALL PROVIDE ANY EXTRA MATERIALS NECESSARY FOR AIR DEVICE RELOCATION.
- BRANCH TAKE-OFFS SHALL NOT BE LOCATED CLOSER THAN 3'-0" FROM ANY ELBOW INCLUDING THE SUPPLY AIR DROP FROM CURB.
- CJ#3 MOUNTED INSIDE CABINETS SERVING SCJ PLENUM. SEE DETAIL 2/M21.
- TRANSITION IN VERTICAL DROP FROM FULL SIZE OF CURB OPENING TO 18" WIDTH. TERMINATE DROP 0'-6" ABOVE CEILING.
- VERTICAL DROP FULL SIZE FROM CURB OPENING TO BELOW STRUCTURE. PROVIDE TURNING VANES IN ALL ELBOWS.
- REPLACE EXISTING AC#1 WITH NEW ROOFTOP UNIT AS SCHEDULED ON SHEET M31. CONNECT EXISTING CONTROLS TO NEW AC#1 AND VERIFY CONTROLS ARE IN GOOD, WORKING ORDER. IF NOT, CONTACT CFA CONSTRUCTION MANAGER.
- AIR CURTAIN MOUNTED OVER DOOR HEADER AT 7'-5" AFF TO BOTTOM OF UNIT. LOCATE MAGNETIC CONTACT TYPE MICROSWITCH IN DOOR FRAME ON STRIKE SIDE.
- CHICK-FIL-A 'ADD-ON' PANEL PURCHASED AND INSTALLED BY MECHANICAL CONTRACTOR. MECHANICAL CONTRACTOR TO CONTACT SUNCOAST ENVIRONMENTAL CONTROLS TO PURCHASE THE 'ADD-ON' PANEL, THERMOSTAT, REMOTE TEMPERATURE SENSOR, AND SMOKE DETECTOR TEST/RESET ANNUNCIATOR STATION FOR AHU#1. SURFACE MOUNT PANEL ABOVE EXISTING T500 PANEL.
- LOCATE A MINIMUM OF 10 FT FROM PARAPETS. SEE DETAIL 3/M31 FOR ORIENTATION OF HINGE SIDE OF FAN ON CURB.
- ROUTE 3/4" TYPE K COPPER CONDENSATE DRAIN FROM AIR HANDLING UNIT TO FLOOR DRAIN LOCATED UNDERNEATH 4-COMPARTMENT SINK. COORDINATE WITH PLUMBING DRAWINGS. INSULATE WITH 1/2" ARMAFLEX.
- SUPPLY AND RETURN PLENUMS SHALL BE FULL SIZE OF AHU#1 CONNECTIONS.
- LOCATE AHU#1 ABOVE EQUIPMENT PLATFORM. POSITION UNIT LOW FOR EASE OF ACCESS. SEE DETAIL 5/M31 FOR SUSPENSION REQUIREMENTS. ROUTE REFRIGERANT PIPING ABOVE CEILING AND UP THRU ROOF TO CU#1.
- 6" DIA. DUCT ROUTED UP THRU TO ROOF. BALANCE VOLUME DAMPER TO ALLOW FOR 75 CFM OF OUTSIDE AIR. ROUTE DUCT AS NECESSARY THRU STRUCTURE TO TERMINATE AT LOREN COOK MODEL PR GRAVITY VENTILATOR WITH 8" DIA. THROAT. PROVIDE AND INSTALL WITH FACTORY ROOF CURB. CURB SHALL HAVE MINIMUM 2'-0" CLEARANCE TO ALL PARAPET WALLS AND OTHER EQUIPMENT. MAINTAIN MINIMUM 10'-0" CLEARANCE TO ANY EXHAUST OR PLUMBING VENT.
- MOUNT SPACE TEMP. SENSOR FOR AHU#1 ON WALL AT 5'-0" AFF AND ROUTE WIRING TO CHICK-FIL-A 'ADD-ON' PANEL. COORDINATE EXACT LOCATION WITH KITCHEN ELEVATIONS SHEETS AND ALL OTHER TRADES. SEE SHEET M41 DETAIL 3 FOR CFA 'ADD-ON' PANEL WIRING DIAGRAM.
- SET CU#1 ON ROOF USING TWO CURBS PLUS CPES-1 EQUIPMENT CURBS. SECURE CU#1 TO CURBS ARRANGED IN PARALLEL. SET LONG SIDE OF CURB PARALLEL TO ROOF SLOPE. FLASH INTO ROOF BY GC. FINAL LOCATION TO BE DETERMINED IN THE FIELD. ALL MAINTENANCE CLEARANCES OF NEW AND EXISTING EQUIPMENT SHALL BE MAINTAINED.

LEGEND

| MARK | TYPE - NECK SIZE - CFM | KEY NOTE REFERENCE |
|----------|------------------------------------|---------------------------------|
| A-12-400 | SPIN-IN FITTING, MVD, NO SCOOP | EXISTING START COLLAR |
| ⊕ | SPIN-IN HARD φ FLEXIBLE φ DIFFUSER | EXISTING RUNOUT TO REMAIN |
| ⊙ | REMOTE TEMPERATURE SENSOR | EXISTING RETURN/EXHAUST (TYP) |
| ⊕ | REMOTE HUMIDITY SENSOR | EXISTING SUPPLY DIFFUSER (TYP) |
| ⊙ | SMOKE DETECTOR | EXISTING DUCT (TYP) |
| ⊕ | GREASE ACCESS DOOR TYPE | NEW RETURN/EXHAUST, UNO. (TYP) |
| ⊕ | POINT OF CONNECTION TO EXISTING | NEW SUPPLY DIFFUSER, UNO. (TYP) |
| → | DIRECTION OF THROW | NEW DUCT (TYP) |
| ∇ | SMOKE DETECTOR ANNUNCIATOR | MANUAL VOLUME DAMPER |
| CD | | CONDENSATE PIPING |

TOTAL AIR BALANCE SCHEDULE

| EQUIPMENT MARK | AC#1 (NEW) | AC #2 (EXISTING) | AC#3 (EXISTING) | AC#4 (EXISTING) | AHU#1 (NEW) | EF#1 (NEW) | EF#2 (NEW) | EF#3 (EXISTING) | EF#4 (NEW) | TOTAL |
|-----------------|--|------------------|-----------------|-----------------|-------------|------------|------------|-----------------|------------|---------|
| SERVES | KITCHEN | SIDE DINING | MAIN DINING | PLAY AREA | ADDITION | HOOD#1 | HOOD#2 | REST-ROOMS | HOOD#3 | |
| SUPPLY AIR CFM | 8,000 | 2,830 | 5,000 | 1,800 | 600 | | | | | +18,230 |
| RETURN AIR CFM | 5,950 | 2,080 | 3,645 | 1,500 | 525 | | | | | +13,700 |
| OUTSIDE AIR CFM | 2,050 | 750 | 1,355 | 300 | 75 | | | | | +4,530 |
| EXHAUST CFM | | | | | | 1,700 | 700 | 485 | 804 | -3,690 |
| PRESSURIZATION | | | | | | | | | | +840 |
| REMARKS | ADJUST AND VERIFY BALANCE OF ALL HVAC EQUIPMENT IS AS SHOWN IN ORDER TO MAINTAIN BUILDING AIR BALANCE. | | | | | | | | | |



Chick-fil-A

5200 Buffington Rd.
Atlanta Georgia,
30349-2998

Revisions:
Mark Date By

| Mark | Date | By |
|------|------|----|
| | | |
| | | |
| | | |
| | | |
| | | |
| | | |
| | | |
| | | |
| | | |
| | | |

Kurzynske & Associates
CONSULTING ENGINEERS
825 Third Avenue, South
Nashville, Tennessee 37210
Telephone: (615) 255-5203
Fax: (615) 255-5207
Email: mail@kurzynske.com

STORE
Joppa Road
FSR #1941
2008 E. Joppa Rd.
Parkville, MD
21234

SHEET TITLE
MECHANICAL
FLOOR PLAN

VERSION S06-E
ISSUE DATE

Job No. : CFHF1511
Store : #1941
Date : 08.28.15
Drawn By : BM
Checked By : MK

Sheet

MI.I