

**FW: Refrigeration Design (RA296)**

Claudia Garcia <cgarcia@nationaltab.com>

Tue 9/20/2022 5:58 PM

To: Purchase Orders <po@nationaltab.com>

Cc: Will Turnbough <Will@nationaltab.com>

1 attachments (415 KB)

NT Proposal - Ralps 296.pdf;

SEE ATTACHED 📎

Sincerely,



**Claudia Garcia | National Account Specialist**

**National TAB**

1329 East Kemper Rd., Suite 4210 Cincinnati, OH 45246

D: (513) 889-9895 • O: (513) 860-2050 ext. 3

[www.nationaltab.com](http://www.nationaltab.com) • [linkedin](https://www.linkedin.com) • [facebook](https://www.facebook.com) • [twitter](https://twitter.com)

**Office Hours:**

Monday - Thursday: 7am – 3pm

**IAQ Solutions:**

-REME HALO@

-Package PHI Unit-Air Purification System@



**From:** Palacios, Juan <juan.palacios@kroger.com>

**Sent:** Tuesday, September 20, 2022 5:55 PM

**To:** Will Turnbough <Will@nationaltab.com>; Reddy, Casey <casey.reddy@kroger.com>; Alec Lewis <alec@nationaltab.com>; Constantino, Ann M <ann.constantino@ralphs.com>

**Cc:** Giglio, Michael R <mike.giglio@kroger.com>; Warder, Clayton <clayton.warder@kroger.com>; Claudia Garcia <cgarcia@nationaltab.com>

**Subject:** RE: Refrigeration Design (RA296)

Ann, please issue a PO under 2006062

**Juan Palacios**

Kroger – Ralps/F4L

(310)-900-3262 office

(602)-206-3662 Cell

[Juan.Palacios@kroger.com](mailto:Juan.Palacios@kroger.com)

**From:** Will Turnbough <Will@nationaltab.com>

**Sent:** Friday, September 16, 2022 8:07 AM

**To:** Reddy, Casey <casey.reddy@kroger.com>; Alec Lewis <alec@nationaltab.com>

**Cc:** Palacios, Juan <juan.palacios@kroger.com>; Giglio, Michael R <mike.giglio@kroger.com>; Warder, Clayton <clayton.warder@kroger.com>; Claudia Garcia <cgarcia@nationaltab.com>

**Subject:** RE: Refrigeration Design (RA296)

**Importance:** High

Casey

See attached. Could you have a PO issued for 296, 72, or 368 ASAP? We'd really like to complete one of these next week

Also please send any info you might have on this location

Thanks!



**Will Turnbough | VP National Markets**  
NEBB Certified Professional

**National TAB**

D: (513) 889 8927 • M: (314) 954 6244 • O: (855) 682 6822

[www.nationaltab.com](http://www.nationaltab.com) • [linkedin](https://www.linkedin.com) • [facebook](https://www.facebook.com) • [twitter](https://twitter.com)



---

**From:** Reddy, Casey <[casey.reddy@kroger.com](mailto:casey.reddy@kroger.com)>  
**Sent:** Thursday, September 15, 2022 11:05 AM  
**To:** Will Turnbough <[Will@nationaltab.com](mailto:Will@nationaltab.com)>; Alec Lewis <[alec@nationaltab.com](mailto:alec@nationaltab.com)>  
**Cc:** Palacios, Juan <[juan.palacios@kroger.com](mailto:juan.palacios@kroger.com)>; Giglio, Michael R <[mike.giglio@kroger.com](mailto:mike.giglio@kroger.com)>; Warder, Clayton <[clayton.warder@kroger.com](mailto:clayton.warder@kroger.com)>  
**Subject:** FW: Refrigeration Design (RA296)

Will/Alec

Please provide a quote to asses RA296 similar to RA072 to confirm what spaces are served by the existing main sales floor unit.

The address is:  
915 S. Brookhurst  
Anaheim, CA 92804

Thanks,

**Casey Reddy, PE | Facilities Engineer**  
**The Kroger Co.** | 1014 Vine Street | Cincinnati, OH 45202  
O: (513) 698-1809 | C: (440) 915-6980 | [casey.reddy@kroger.com](mailto:casey.reddy@kroger.com)



---

**From:** Nathan Adkins <[Nathan.adkins@rdcollaborative.com](mailto:Nathan.adkins@rdcollaborative.com)>  
**Sent:** Tuesday, September 13, 2022 12:59 PM  
**To:** Palacios, Juan <[juan.palacios@kroger.com](mailto:juan.palacios@kroger.com)>; Reddy, Casey <[casey.reddy@kroger.com](mailto:casey.reddy@kroger.com)>; Ruwe, Eric D <[eric.ruwe@kroger.com](mailto:eric.ruwe@kroger.com)>; Warder, Clayton <[clayton.warder@kroger.com](mailto:clayton.warder@kroger.com)>; Ruwe, Eric D <[eric.ruwe@kroger.com](mailto:eric.ruwe@kroger.com)>; Giglio, Michael R <[mike.giglio@kroger.com](mailto:mike.giglio@kroger.com)>  
**Cc:** Gilbert Dilanchian <[Gilbert@engineousgroup.com](mailto:Gilbert@engineousgroup.com)>; Andre Shahbandari <[Andre@Engineousgroup.com](mailto:Andre@Engineousgroup.com)>; Bianca Stoelting <[Bianca.Stoelting@rdcollaborative.com](mailto:Bianca.Stoelting@rdcollaborative.com)>  
**Subject:** RE: Refrigeration Design (RA296)

Juan,

Can you get an air balance report done for this store like we did for the other stores?

That would be a huge help in making sure our design isn't over or under designed.

Thanks!

**Nathan Adkins**  
Project Manager  
Associate

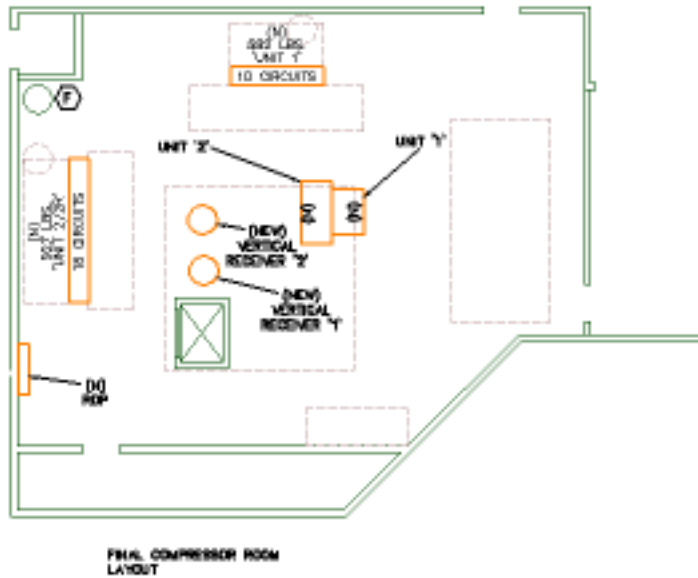
**rdc.**  
245 E 3rd St  
Long Beach, CA 90802  
o 562.628.8000

[RDCOLLABORATIVE.COM](http://RDCOLLABORATIVE.COM)

---

**From:** Palacios, Juan <[juan.palacios@kroger.com](mailto:juan.palacios@kroger.com)>  
**Sent:** Friday, September 9, 2022 3:15 PM  
**To:** Nathan Adkins <[Nathan.adkins@rdcollaborative.com](mailto:Nathan.adkins@rdcollaborative.com)>; Reddy, Casey <[casey.reddy@kroger.com](mailto:casey.reddy@kroger.com)>; Ruwe, Eric D <[eric.ruwe@kroger.com](mailto:eric.ruwe@kroger.com)>; Warder, Clayton <[clayton.warder@kroger.com](mailto:clayton.warder@kroger.com)>; Ruwe, Eric D <[eric.ruwe@kroger.com](mailto:eric.ruwe@kroger.com)>; Giglio, Michael R <[mike.giglio@kroger.com](mailto:mike.giglio@kroger.com)>  
**Subject:** RE: Refrigeration Design (RA296)

Nathan, we need to do a similar exercise as we need a RTU AC to replace the AHU.  
Please help me accelerate it. See highlighted Info.



## PHASING PLAN RECOMMENDATION OUTLINE :

1. INSTALL RETROFIT GLASS DOORS AND NEW CASES
2. INSTALL ROOFTOP PACKAGED UNIT AND REMOVE AHU
3. PLACE NEW ADIABATIC CONDENSER
4. PLACE MEDIUM TEMP OSS-IX(UNIT 2) WITH REMOTE HEADER AND RECEIVER
5. MOVE OVER CIRCUIT 10 AND SUCTION GROUP 2%
6. PLACE LOW TEMP OSS-IX(UNIT 1) WITH REMOTE HEADER AND RECEIVER
7. TRANSFER ALL CIRCUITS TO NEW EQUIPMENT
8. CONNECT LOW TEMP RACK TO WATER RECLAIM
9. REMOVE EXISTING PARALLEL RACKS AND EVAPORATIVE CONDENSER

**Juan Palacios**

Kroger – Ralphs/F4L  
 (310)-900-3262 office  
 (602)-206-3662 Cell  
[Juan.Palacios@kroger.com](mailto:Juan.Palacios@kroger.com)

**From:** Nathan Adkins <[Nathan.adkins@rdcollaborative.com](mailto:Nathan.adkins@rdcollaborative.com)>

**Sent:** Friday, September 9, 2022 3:03 PM

**To:** Palacios, Juan <[juan.palacios@kroger.com](mailto:juan.palacios@kroger.com)>; Reddy, Casey <[casey.reddy@kroger.com](mailto:casey.reddy@kroger.com)>; Ruwe, Eric D <[eric.ruwe@kroger.com](mailto:eric.ruwe@kroger.com)>; Warder, Clayton <[clayton.warder@kroger.com](mailto:clayton.warder@kroger.com)>; Ruwe, Eric D <[eric.ruwe@kroger.com](mailto:eric.ruwe@kroger.com)>; Giglio, Michael R <[mike.giglio@kroger.com](mailto:mike.giglio@kroger.com)>

**Cc:** Dellecave, Michael A <[michael.dellecave@kroger.com](mailto:michael.dellecave@kroger.com)>

**Subject:** RE: Refrigeration Design (RA296)

**\*\* [EXTERNAL EMAIL]:** Do not click links or open attachments unless you recognize the sender and know the content is safe. \*\*

Juan,

We do not have new air handlers in our scope of work at this point. We have the condenser and the protocols in our scope. We would need to get a mechanical engineer involved to replace the AHU. We would need Casey's team to assist on selecting the AHU, similar to what we are doing at 159 and 026.

**Nathan Adkins**

Project Manager  
 Associate

**rdc.**  
 245 E 3rd St  
 Long Beach, CA 90802  
 o 562.628.8000

[RDCOLLABORATIVE.COM](http://RDCOLLABORATIVE.COM)

**From:** Palacios, Juan <[juan.palacios@kroger.com](mailto:juan.palacios@kroger.com)>

**Sent:** Friday, September 9, 2022 2:54 PM

**To:** Reddy, Casey <[casey.reddy@kroger.com](mailto:casey.reddy@kroger.com)>; Ruwe, Eric D <[eric.ruwe@kroger.com](mailto:eric.ruwe@kroger.com)>; Warder, Clayton <[clayton.warder@kroger.com](mailto:clayton.warder@kroger.com)>; Nathan Adkins <[Nathan.adkins@rdcollaborative.com](mailto:Nathan.adkins@rdcollaborative.com)>; Ruwe, Eric D <[eric.ruwe@kroger.com](mailto:eric.ruwe@kroger.com)>; Giglio, Michael R <[mike.giglio@kroger.com](mailto:mike.giglio@kroger.com)>

**Cc:** Dellecave, Michael A <[michael.dellecave@kroger.com](mailto:michael.dellecave@kroger.com)>

**Subject:** RE: Refrigeration Design (RA296)

Casey, I was not able to locate the quote for RA-296 Anaheim can you resend.  
 Nathan, was there anything from your side needed for the RTU and Air handling unit?

**Juan Palacios**

Kroger – Ralphps/F4L  
(310)-900-3262 office  
(602)-206-3662 Cell  
[Juan.Palacios@kroger.com](mailto:Juan.Palacios@kroger.com)

---

**From:** Reddy, Casey <[casey.reddy@kroger.com](mailto:casey.reddy@kroger.com)>  
**Sent:** Thursday, April 7, 2022 12:49 PM  
**To:** Palacios, Juan <[juan.palacios@kroger.com](mailto:juan.palacios@kroger.com)>; Ruwe, Eric D <[eric.ruwe@kroger.com](mailto:eric.ruwe@kroger.com)>; Warder, Clayton <[clayton.warder@kroger.com](mailto:clayton.warder@kroger.com)>  
**Subject:** RE: Refrigeration Design (RA296)

Juan,

I can help get a budget number together, but because the packaged RTU wouldn't quite be a 'like for like' replacement, we should get an MEP engineer of record to design/sign off on the replacement.

**Casey Reddy, PE | Facilities Engineer**  
The Kroger Co. | 1014 Vine Street | Cincinnati, OH 45202  
O: (513) 698-1809 | C: (440) 915-6980 | [casey.reddy@kroger.com](mailto:casey.reddy@kroger.com)



---

**From:** Palacios, Juan <[juan.palacios@kroger.com](mailto:juan.palacios@kroger.com)>  
**Sent:** Thursday, April 7, 2022 3:36 PM  
**To:** Ruwe, Eric D <[eric.ruwe@kroger.com](mailto:eric.ruwe@kroger.com)>; Warder, Clayton <[clayton.warder@kroger.com](mailto:clayton.warder@kroger.com)>  
**Cc:** Reddy, Casey <[casey.reddy@kroger.com](mailto:casey.reddy@kroger.com)>  
**Subject:** RE: Refrigeration Design (RA296)

Now I got it. I need ordering info on the package unit so we can place the order.  
Eric or Casey, It will help me if the Packaged RTU showed on the R1.1 from a bidding stand point and drawing preparation.  
Let me know your thoughts.

**Juan Palacios**

Kroger – Ralphps/F4L  
(310)-900-3262 office  
(602)-206-3662 Cell  
[Juan.Palacios@kroger.com](mailto:Juan.Palacios@kroger.com)

---

**From:** Ruwe, Eric D <[eric.ruwe@kroger.com](mailto:eric.ruwe@kroger.com)>  
**Sent:** Thursday, April 7, 2022 12:32 PM  
**To:** Palacios, Juan <[juan.palacios@kroger.com](mailto:juan.palacios@kroger.com)>; Warder, Clayton <[clayton.warder@kroger.com](mailto:clayton.warder@kroger.com)>  
**Cc:** Reddy, Casey <[casey.reddy@kroger.com](mailto:casey.reddy@kroger.com)>  
**Subject:** RE: Refrigeration Design (RA296)

Hey Juan,

The A/C is being moved from the machine room to a packaged unit on the roof.

Thanks,

**Eric Ruwe**

Refrigeration Application Design Supervisor  
Kroger Co. | 1014 Vine St. | Cincinnati, OH 45202  
T: (513)762-4171 | [eric.ruwe@kroger.com](mailto:eric.ruwe@kroger.com)

---

**From:** Palacios, Juan <[juan.palacios@kroger.com](mailto:juan.palacios@kroger.com)>  
**Sent:** Thursday, April 7, 2022 3:30 PM  
**To:** Warder, Clayton <[clayton.warder@kroger.com](mailto:clayton.warder@kroger.com)>  
**Cc:** Ruwe, Eric D <[eric.ruwe@kroger.com](mailto:eric.ruwe@kroger.com)>  
**Subject:** RE: Refrigeration Design (RA296)

Clayton, I do not see the AHU for AC on the R1.1 or the R6.1.  
Eric, I need clarification on how we are handling the AC for this store.

**Juan Palacios**

Kroger – Ralphps/F4L  
(310)-900-3262 office

(602)-206-3662 Cell  
[Juan.Palacios@kroger.com](mailto:Juan.Palacios@kroger.com)

---

**From:** Warder, Clayton <[clayton.warder@kroger.com](mailto:clayton.warder@kroger.com)>  
**Sent:** Thursday, April 7, 2022 8:56 AM  
**To:** Palacios, Juan <[juan.palacios@kroger.com](mailto:juan.palacios@kroger.com)>; Lara, Christian <[christian.lara@ralphs.com](mailto:christian.lara@ralphs.com)>  
**Cc:** Ruwe, Eric D <[eric.ruwe@kroger.com](mailto:eric.ruwe@kroger.com)>; Vanfleet, Jill A <[jill.vanfleet@kroger.com](mailto:jill.vanfleet@kroger.com)>;  
[P=134680+EMAIL~UPDATE+Drawings+Refrigeration+Plans+Project+Posting+Emails+/@kroger.sitefolio.net](mailto:P=134680+EMAIL~UPDATE+Drawings+Refrigeration+Plans+Project+Posting+Emails+/@kroger.sitefolio.net)  
**Subject:** Refrigeration Design (RA296)

Hi Christian and Juan,

I have posted a revision to the system replacement plan that shows a new coil for the produce prep area.

Kroger SecureWEB login link to site|folio:  
<http://n060ncl01.kroger.com/sitefolio/ssoentry.asp>

\*\*\*\*\*Warning: You must sign into site|folio using the Kroger SecureWEB before selecting the links below in this email!\*\*\*\*\*

Select Link Below to access \*.DWG, \*.DWF/\*.DWFx, \*.epro.csv & \*.req.xls files on site|folio:  
<https://www.sitefolio.net/kroger/projectdocuments.sf?idproject=134680&bn=14553731&idfilter=8252&idtargetfolder=14553737>

Select Link Below Then Select the Project Posting Emails Folder to access the Project Posting Emails:  
<https://www.sitefolio.net/kroger/projectdocuments.sf?idproject=134680&bn=14553731&idfilter=8252&idtargetfolder=14553737>  
Select the link above to access/open these types of emails from this project.

Please let me know if you have any questions or concerns.

Thank you,  
**Clayton Warder**

Refrigeration Application Designer  
Email: [Clayton.Warder@Kroger.com](mailto:Clayton.Warder@Kroger.com)

---

This e-mail message, including any attachments, is for the sole use of the intended recipient(s) and may contain information that is confidential and protected by law from unauthorized disclosure. Any unauthorized review, use, disclosure or distribution is prohibited. If you are not the intended recipient, please contact the sender by reply e-mail and destroy all copies of the original message.

---

This e-mail message, including any attachments, is for the sole use of the intended recipient(s) and may contain information that is confidential and protected by law from unauthorized disclosure. Any unauthorized review, use, disclosure or distribution is prohibited. If you are not the intended recipient, please contact the sender by reply e-mail and destroy all copies of the original message.

---

This e-mail message, including any attachments, is for the sole use of the intended recipient(s) and may contain information that is confidential and protected by law from unauthorized disclosure. Any unauthorized review, use, disclosure or distribution is prohibited. If you are not the intended recipient, please contact the sender by reply e-mail and destroy all copies of the original message.

---

This e-mail message, including any attachments, is for the sole use of the intended recipient(s) and may contain information that is confidential and protected by law from unauthorized disclosure. Any unauthorized review, use, disclosure or distribution is prohibited. If you are not the intended recipient, please contact the sender by reply e-mail and destroy all copies of the original message.