

HOOD INFORMATION																	
HOOD NO.	MARK	MODEL	HOOD DIMENSIONS (IN.)			HOOD CONSTR.	COOKING LOAD / DUTY RATING	TOTAL CFM	EXHAUST COLLAR(S)					SUPPLY		TOTAL WEIGHT LBS.	SECTION LOCATION
			LENGTH	WIDTH	HEIGHT				WIDTH	LENGTH	DIA.	CFM	S.P.	MUA CFM	AC CFM		
1	FRYER HOOD	XXEP-83-S	83	TOP 23 BOT 3	FRT 12 BACK 36	430 SS WHERE EXPOSED	MEDIUM	1500	12	12		1500	0.689			169	SINGLE

HOOD INFORMATION														
HOOD NO.	MARK	LIGHTING DETAILS			GREASE FILTRATION DETAILS			UTILITY CABINET(S)						
		FIXTURE TYPE	BULB / LAMP INFO	QTY	FOOT CANDLES	TYPE / MODEL MATERIAL	QTY	SIZE (IN.) L H	LOCATION	FIRE SYSTEM TYPE	SIZE	MODEL	CONTROLS INTERFACE	
1	FRYER HOOD					X-TRACTOR (SPARK ARRESTOR INCL.) STAINLESS STEEL	5	16 16						

HOOD OPTIONS		SPECIAL DESIGN REQUESTS	
UL 710 LISTED W/ OUT EXHAUST FIRE DAMPER - UL #R25625	BACK NON-INTEGRAL AIR SPACE - 3 IN WIDE	SDR #K2000140 - FRYMASTER 4L FRYER FLUE BYPASS	
26 IN HIGH CEILING ENCLOSURES - FRONT LEFT RIGHT - FIELD INSTALLED	FACTORY MOUNTED EXHAUST COLLAR(S)	SDR #K1700974 - CULVERS 4 VAT FRYER PROCESS	
PERFORMANCE ENHANCING LIP (PEL) TECHNOLOGY	STANDING SEAM CONSTRUCTION FOR SUPERIOR STRENGTH		

Direct Drive Upblast Centrifugal Roof Exhaust Fan

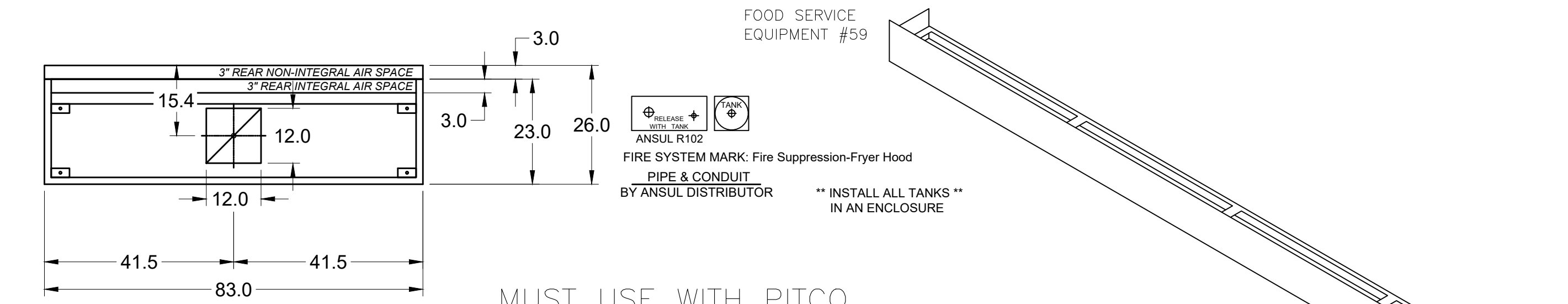
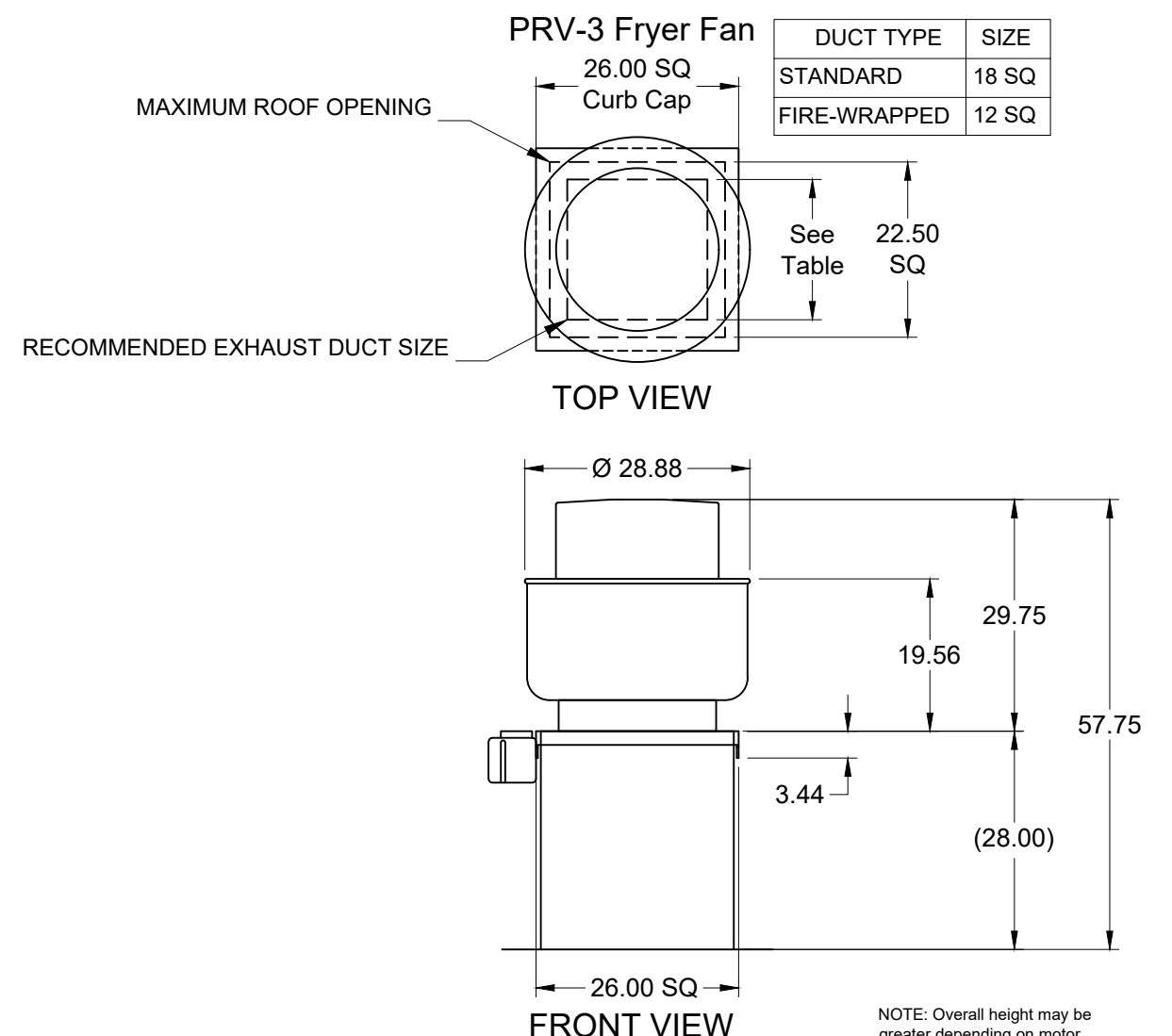
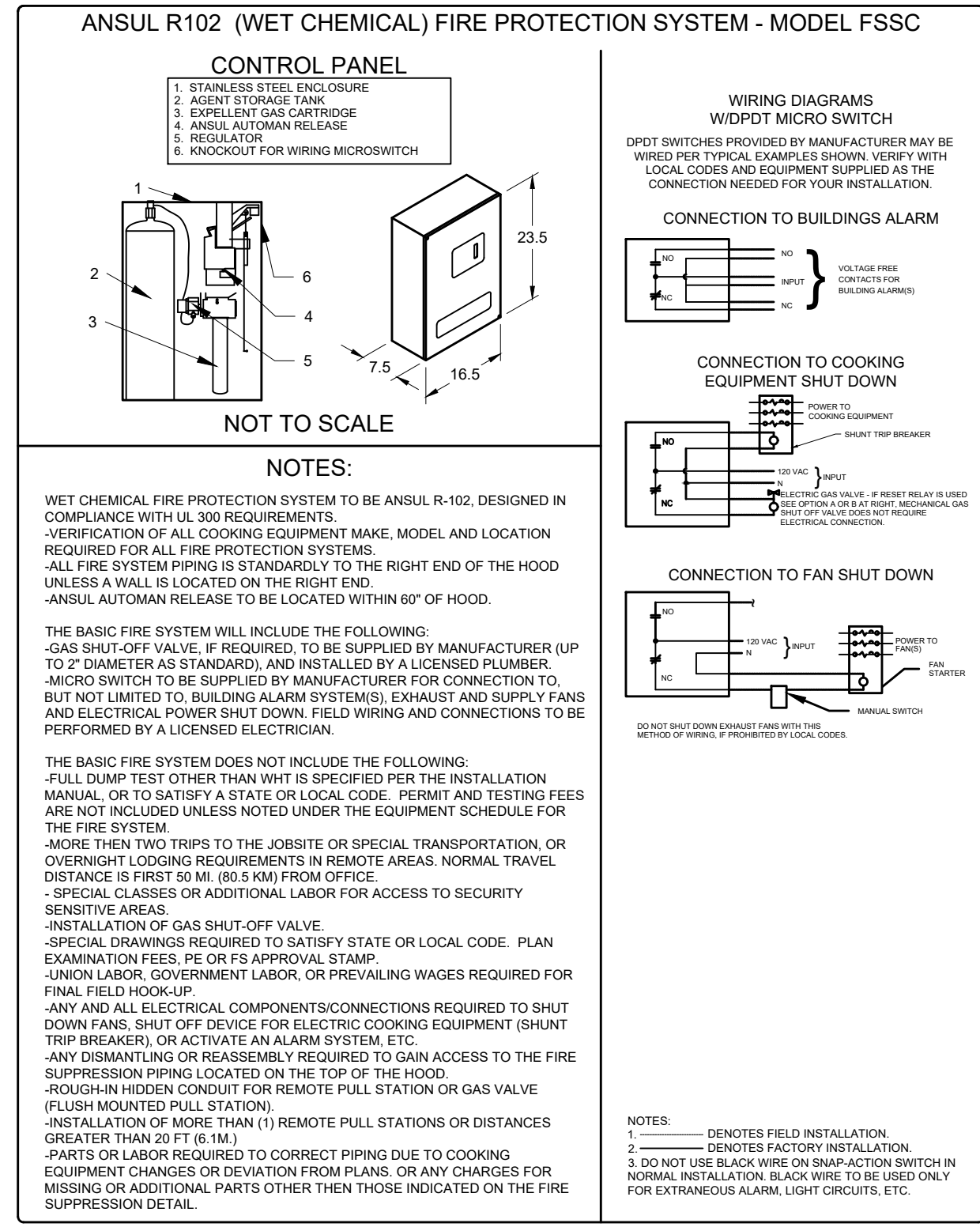
MARK INFORMATION			FAN INFORMATION					MOTOR INFORMATION						
QTY	MARK	MODEL	VOLUME (CFM)	TOTAL EXTERNAL SP (IN WG)	FAN RPM	OPERATING POWER (HP)	WEIGHT (LB.)	SIZE (HP)	V/C/P	ENCLOSURE	MOTOR RPM	WINDINGS	NEC FLA*	
1	PRV-3 Fryer Fan	XCUE-140-VG	1,500	1	1,349	0.46	90	1	115/60/1	OP	1725	1	16	

NEC FLA - Based on table 430.250 or 430.248 of National Electrical Code 2020. Actual motor FLA may vary for sizing thermal overload, consult factory

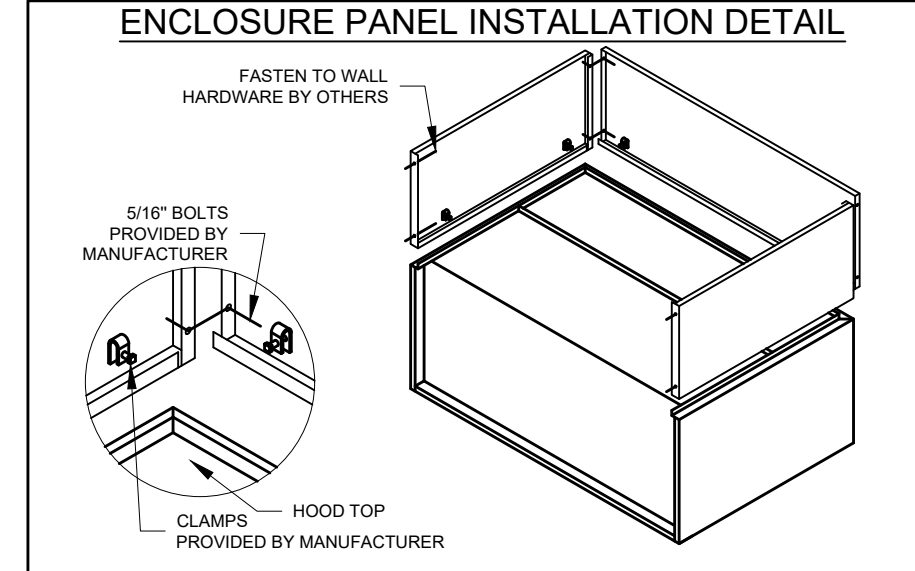
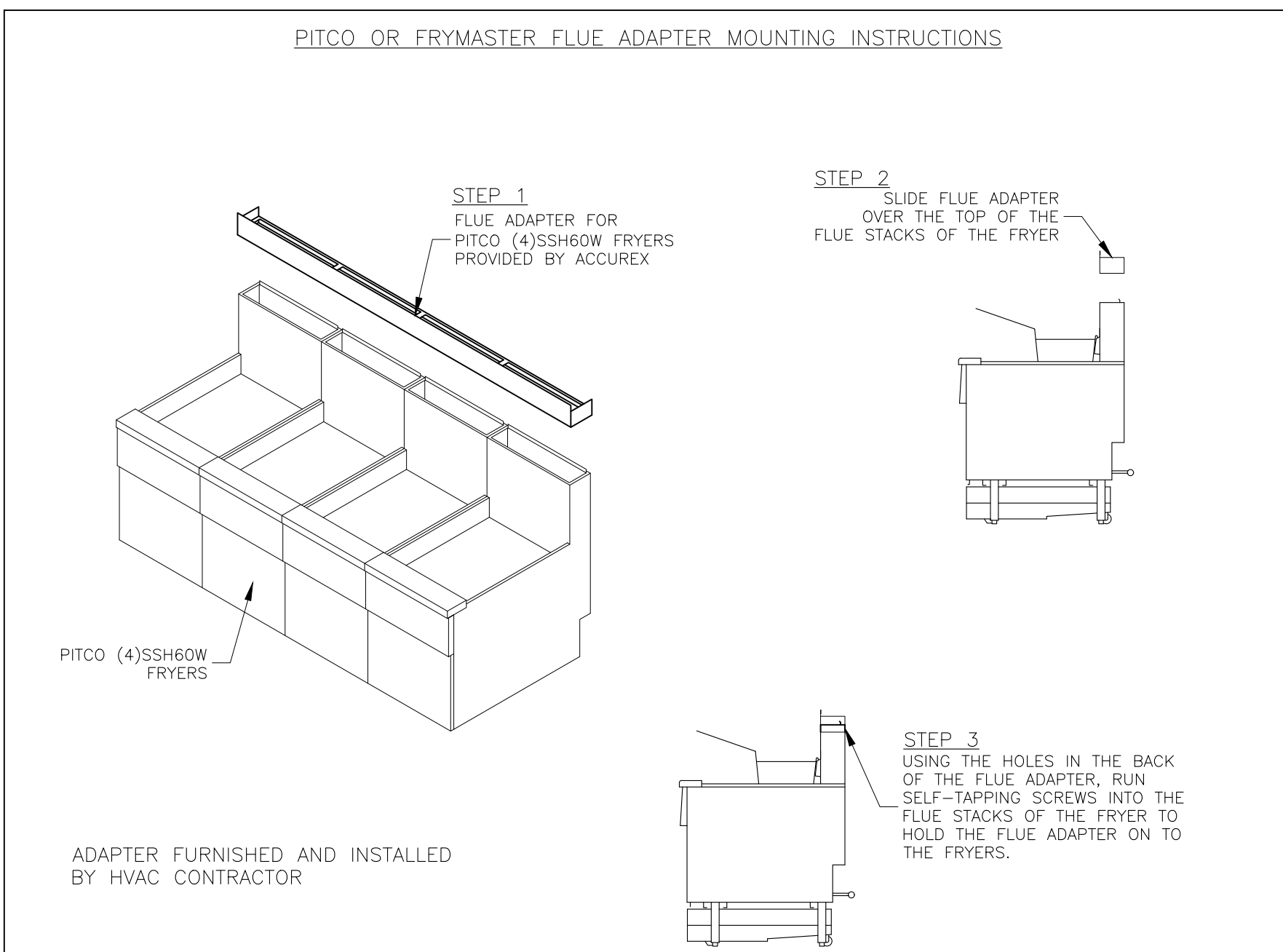
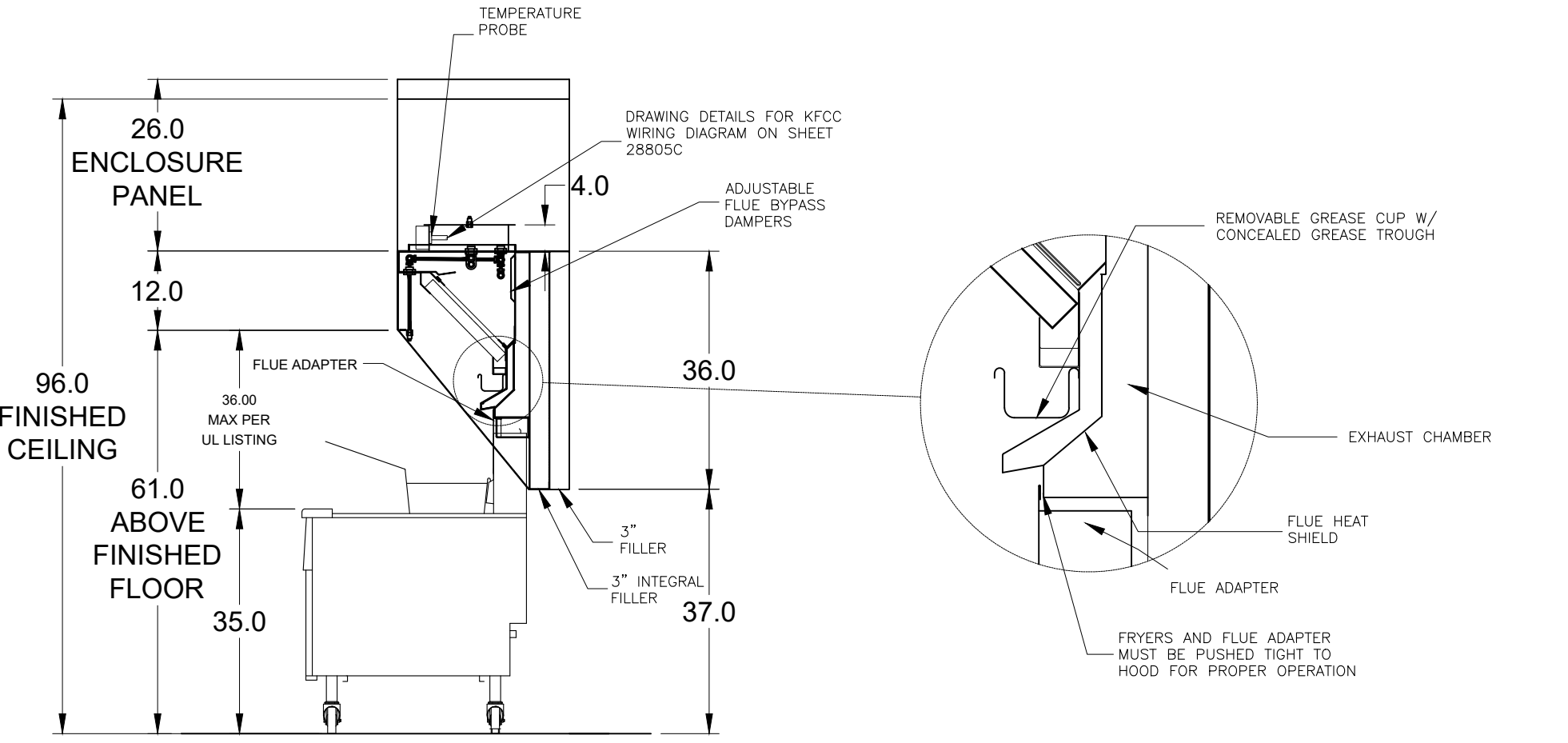
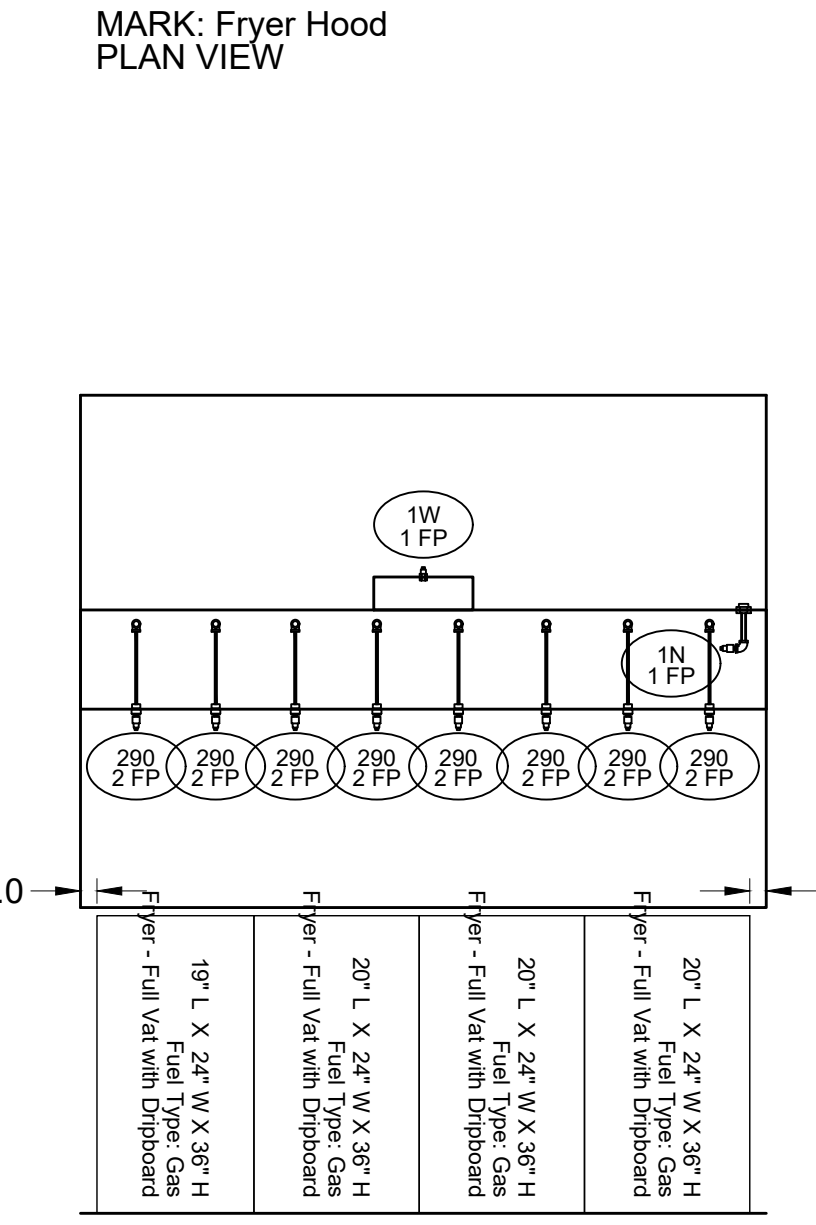
PRV-3 Fryer Fan : SELECTED OPTIONS AND ACCESSORIES	
One piece fully welded windband	Tapered bushing wheel hub
Breather tube outlet area min. 4.4 sq. in. (sizes 99-480), 2.0 sq. in. (sizes 60-95)	Min. windband material thickness: 0.051" aluminum (060-240), 0.064" aluminum (240HP, 240XP), 0.080" aluminum (sizes 300-480)
Larger Curb Cap Size - 26 Square	UL/cUL 705 Listed - Supplement SC - "Power Ventilators for Restaurant Exh. Appliances" (Formerly UL 762)
Switch, NEMA-3R, Toggle	Hinge, Factory Installed
High Temp Curb Seal Rated for Continuous Duty at 1500 F (Factory Attached)	Grease Trap (PN 475538)
Clean-out Port - Factory Installed	Conduit Chase Qty 1

FIRE SYSTEM INFORMATION									
MARK	MODEL	LOCATION	FLOW POINTS		SUPPLY LINE	DETECTION	MARK(S) PROTECTED BY FIRE SYSTEM		
			HOODS	PCU					
FIRE SUPPRESSION-FRYER HOOD	ANSUL R-102 WET CHEMICAL	LEFT END PRE-PIPE ONLY	18 UTILIZED	22 AVAILABLE	CONTINUOUS	FUSIBLE LINK	FRYER HOOD SECTION 1		

FIRE SYSTEM OPTIONS AND ACCESSORIES
 PRE-PIPE ONLY (INCLUDES PRE-PIPED HOOD(S) WITH DETECTION ONLY)
 CHROME SLEEVES FOR FACTORY PROVIDED APPLIANCES DROPS - INCLUDED
 METAL BLOW-OFF CAPS - INCLUDED



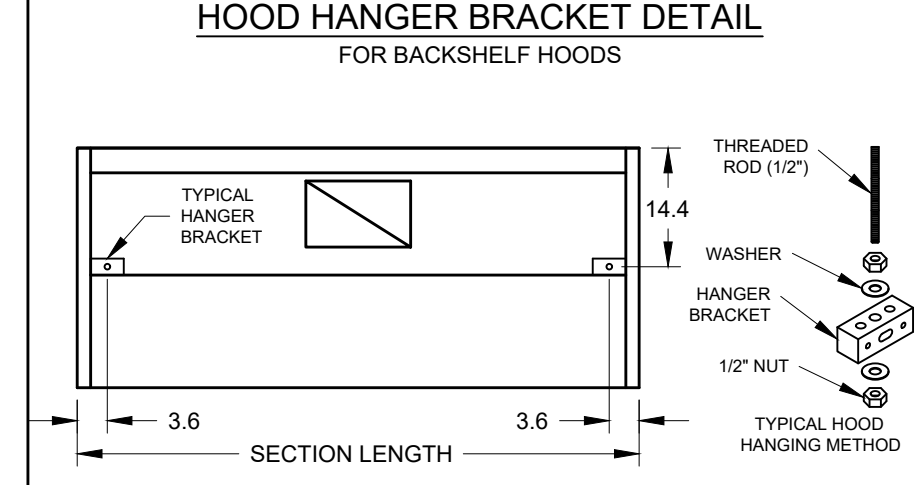
MUST USE WITH PITCO MODEL CU-SSH60W/WR 4VAT FRYER IF FRYMASTER MODEL 41814GF-CFS IS BEING USED, NOTIFY ACCUREX REP



HOOD HANGING HEIGHT FOR FIRE SYSTEMS

VERIFICATION OF HOOD HANGING HEIGHT ABOVE FINISHED FLOOR (A.F.F.) IS REQUIRED FOR CORRECT PLACEMENT OF FIRE SYSTEM NOZZLES.

- RECOMMENDED HANGING HEIGHT = 61" FROM FINISHED FLOOR TO LOWER FRONT EDGE OF HOOD.
- OTHER HANGING HEIGHT = " FROM FINISHED FLOOR TO LOWER EDGE OF HOOD.



ACCUREX - W.I.A
 PHILLIP KRAFT
 PHILLIP.KRAFT@ACCUREX.COM
 262-227-7865

PROJECT 12/4/2019
 MARK

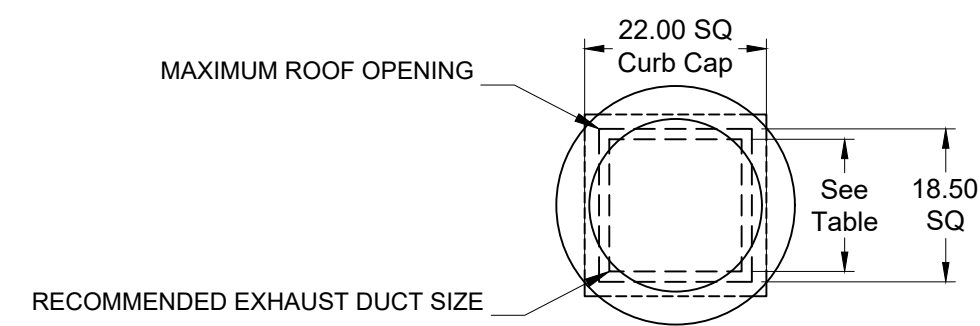
CULVERS - OTTAWA, IL
 REMODEL
 FRYER HOOD
 PRV-3 FRYER FAN
 FIRE SUPPRESSION-FRYER HOOD

Direct Drive Upblast Centrifugal Roof Exhaust Fan

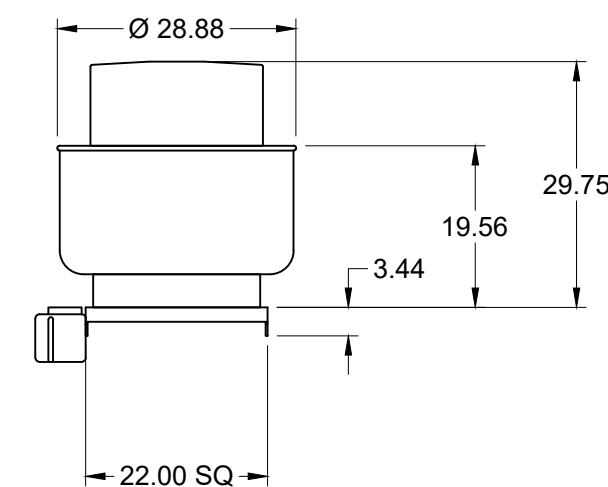
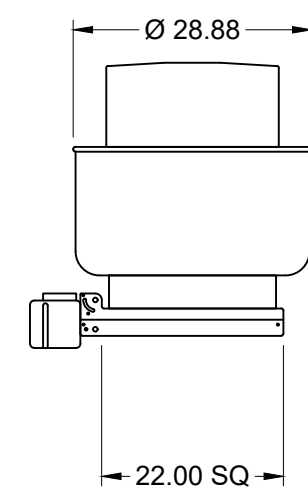
MARK INFORMATION		FAN INFORMATION						MOTOR INFORMATION					
QTY	MARK	MODEL	VOLUME (CFM)	TOTAL EXTERNAL SP (IN WG)	FAN RPM	OPERATING POWER (HP)	WEIGHT (LB.)	SIZE (HP)	V/C/P	ENCLOSURE	MOTOR RPM	WINDINGS	NEC FLA*
1	PRV-2 Griddle Fan	XCUE-140-VG	1,500	1.8	1,702	0.83	90	1	115/60/1	OP	1725	1	16

*NEC FLA - Based on table 430.250 or 430.248 of National Electrical Code 2020. Actual motor FLA may vary for sizing thermal overload, consult factory"

PRV-2 Griddle Fan : SELECTED OPTIONS AND ACCESSORIES
One piece fully welded windband
Tapered bushing wheel hub
Breather tube outlet area min. 4.4 sq. in. (sizes 99-480), 2.0 sq. in. (sizes 60-95)
Min. windband material thickness: 0.051" aluminum (060-240), 0.064" aluminum (240HP, 240XP), 0.080" aluminum (sizes 300-480)
Standard Curb Cap Size - 22 Square
UL/cUL 705 Listed - Supplement SC - "Power Ventilators for Restaurant Exh. Appliances" (Formerly UL 762)
Switch, NEMA-3R, Toggle,
Hinge, Factory Installed
High Temp Curb Seal Rated for Continuous Duty at 1500 F (Factory Attached)
Grease Trap (PN 475538)
Clean-out Port - Factory Installed
Conduit Chase Qty 1

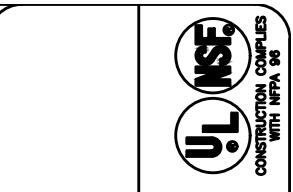


DUCT TYPE	SIZE
STANDARD	16 SQ
FIRE-WRAPPED	12 SQ



DUCT DIMENSIONS ARE LARGEST POSSIBLE DUCT TO FIT THROUGH CURB. CONSULT SYSTEM DESIGN ENGINEER FOR RECOMMENDED DUCT SIZE.

OVERALL HEIGHT MAY BE GREATER DEPENDING ON MOTOR, ADAPTER, AND/OR HINGE BASE.



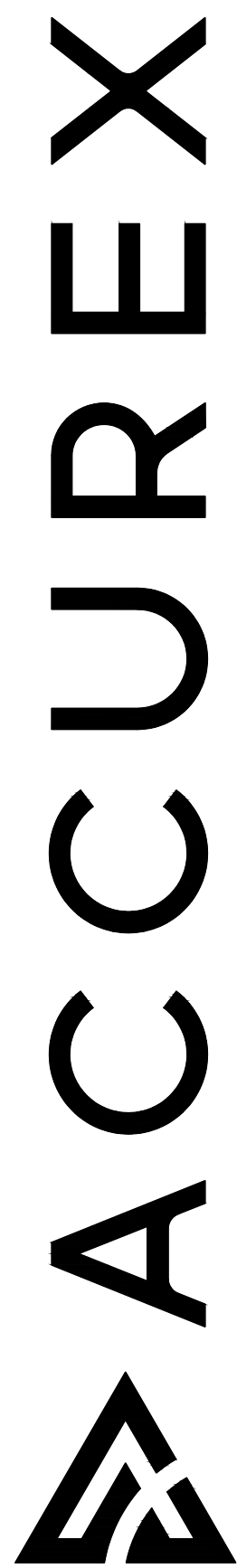
CULVERS - OTTAWA, IL
REMODEL

PRV-2 GRIDDLE FAN

PROJECT
5/2/2024

MARK

ACCUREX W/IA - 1970
PHILLIP KRAFT
PHILLIP.KRAFT@ACCUREX.COM
(262)227-7865



CONTROL INFORMATION

MARK	ELECTRICAL CONTROL PACKAGE		USER INTERFACE		FANS CONTROLLED											
	MODEL	LOCATION	TYPE	LOCATION	FAN #	TYPE	FAN	FAN MARK	ZONE	CFM	MOTOR HP	MOTOR VOLT	CYCLE	MOTOR PHASE	MOTOR STARTER IN PANEL	VFD IN PANEL
CONTROLS	XKC-CV-S-22-2-1-0	SHIP LOOSE ENCLOSURE	FULL COLOR TOUCHSCREEN	SHIP LOOSE	1	SUPPLY	S1	RTU-1	1	1500	1	208	60	3	NO	NO
					2	SUPPLY	S2	RTU-2	2	1500	1	208	60	3	NO	NO
					3	EXHAUST	E1	PRV-2 GRIDDLE FAN	2	1500	1	115	60	1	NO	NO
					4	EXHAUST	E2	PRV-3 FRYER FAN	1	1500	1	115	60	1	NO	NO

CONTROL FEATURES

- TEMP SENSORS (FACTORY INSTALLED) - QTY. 1
- TEMP SENSORS (SHIPPED LOOSE) - QTY. 1
- DRY FIRE CONTACTS - QTY. 2
- EXHAUST MAX DURING FIRE
- SUPPLY OFF DURING FIRE

SPECIAL DESIGN REQUESTS

SDR #K2000462 - CULVERS CONTROL PANEL - EXTRA SET OF FIRE CONTACTS - REVISE WIRING DIAGRAMS



DOC NUMBER: ##### REV: #####

CAUTION
UNIT MUST BE GROUNDED IN ACCORDANCE WITH N.E.C. POWER MUST BE OFF WHILE SERVICING.

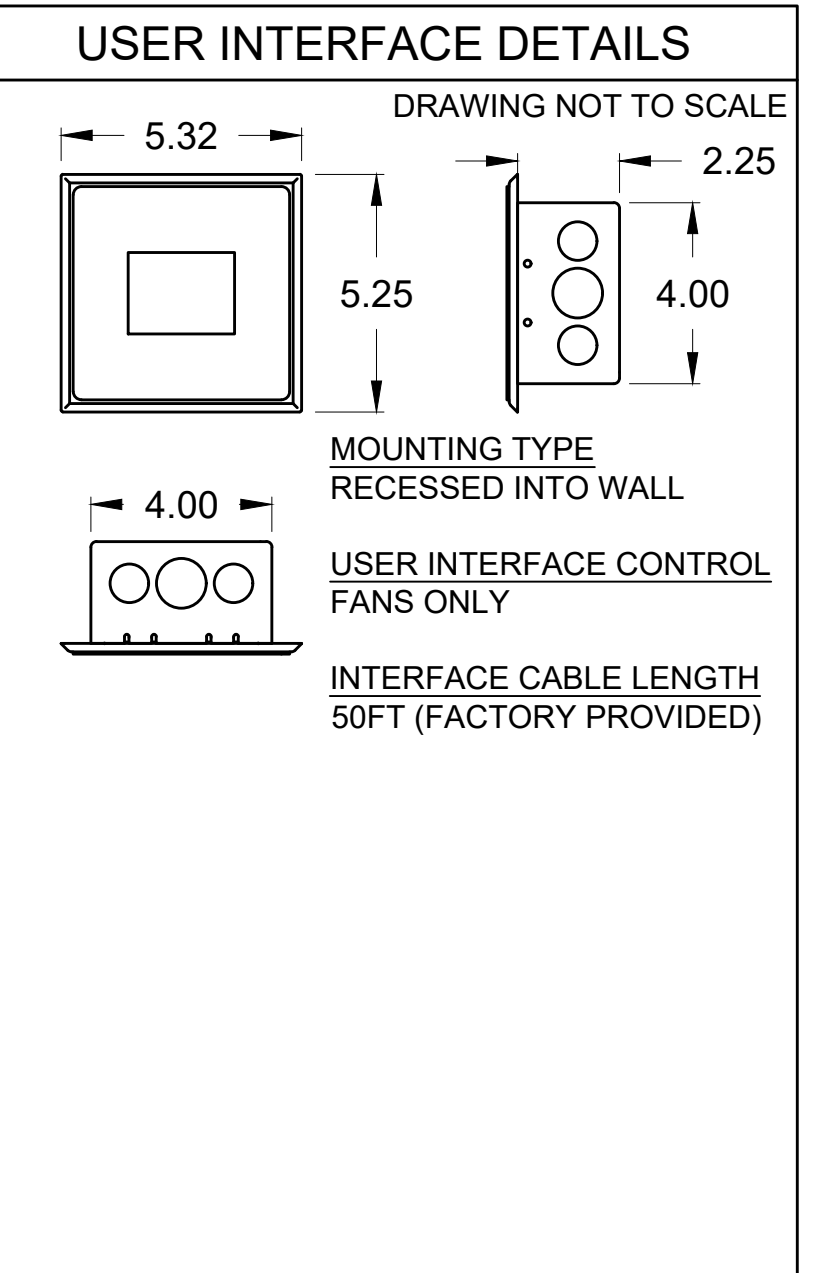
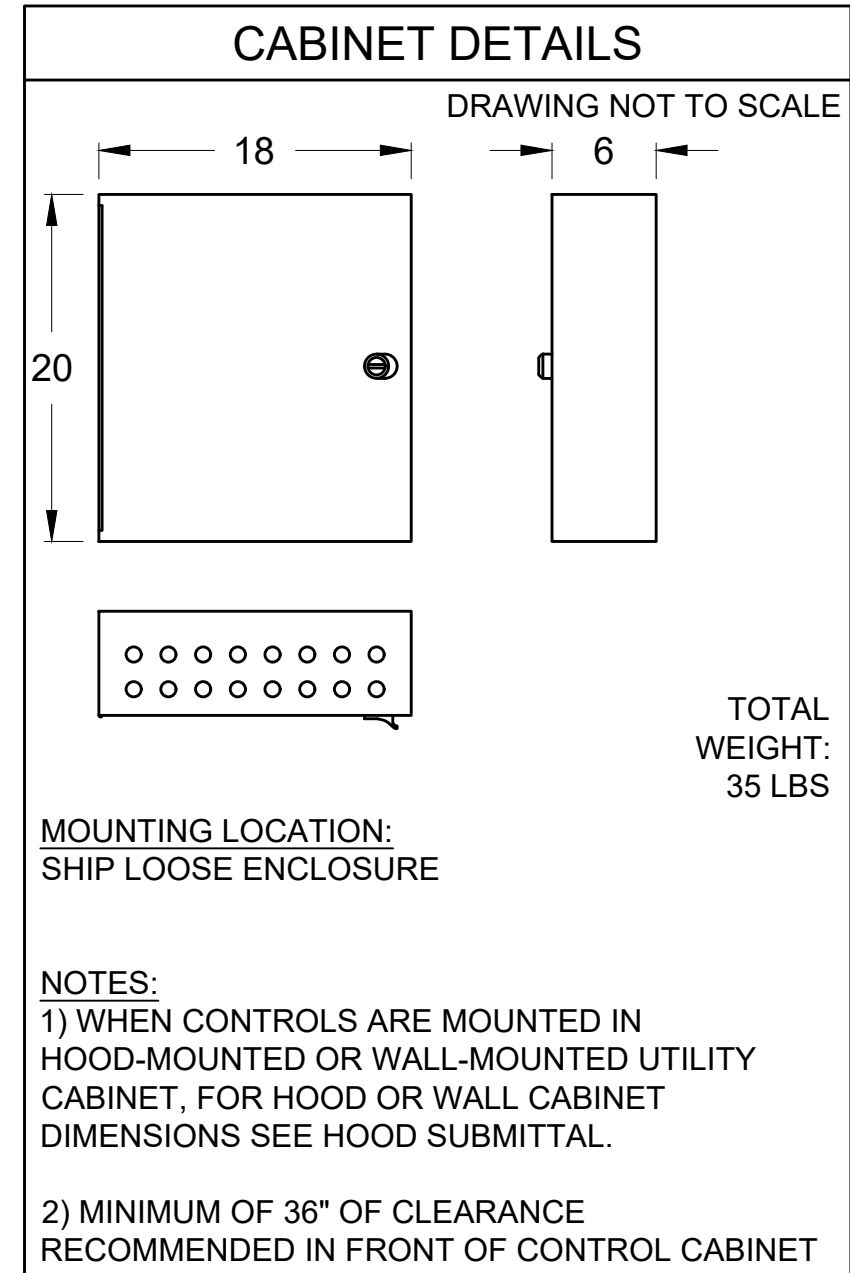
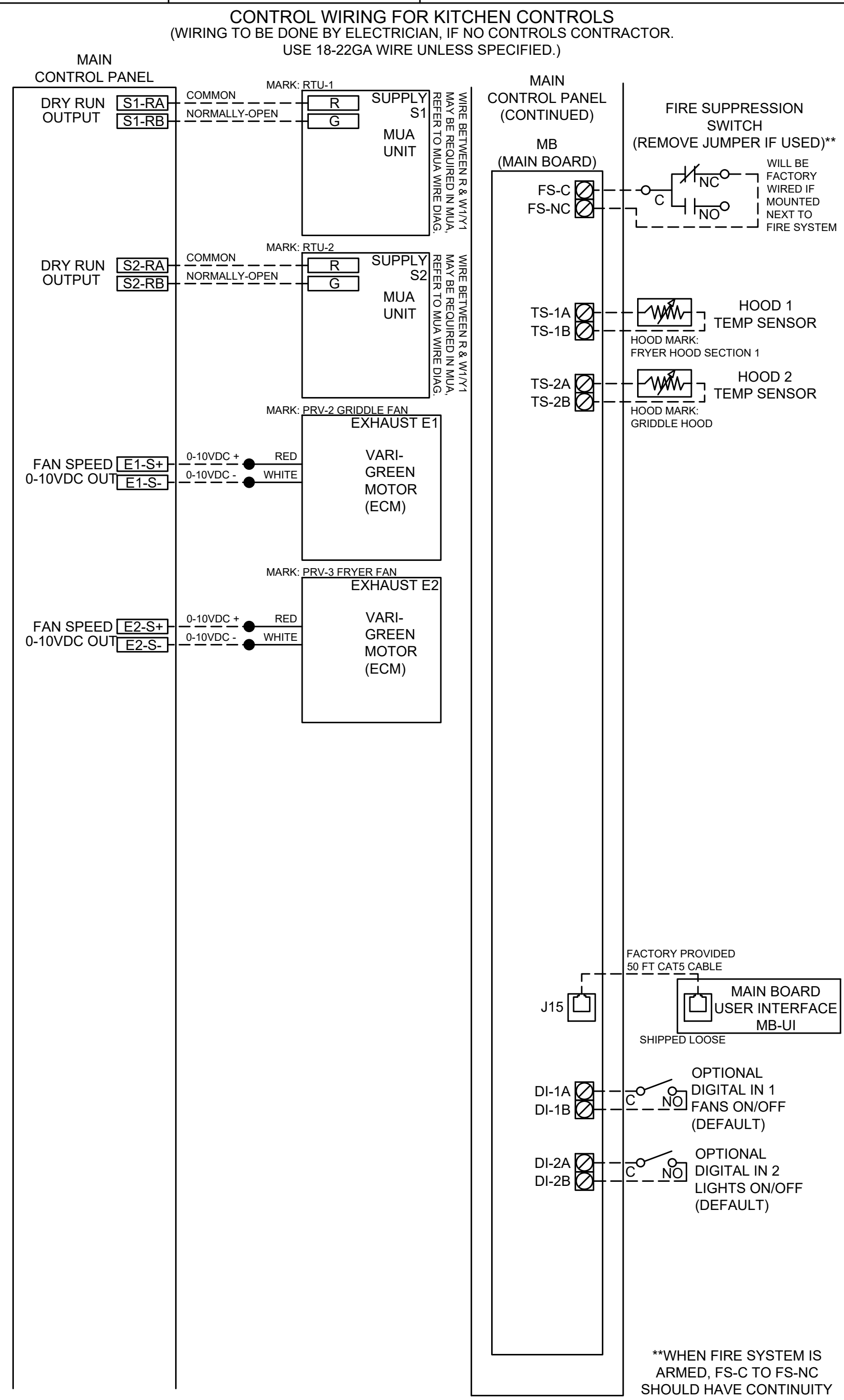
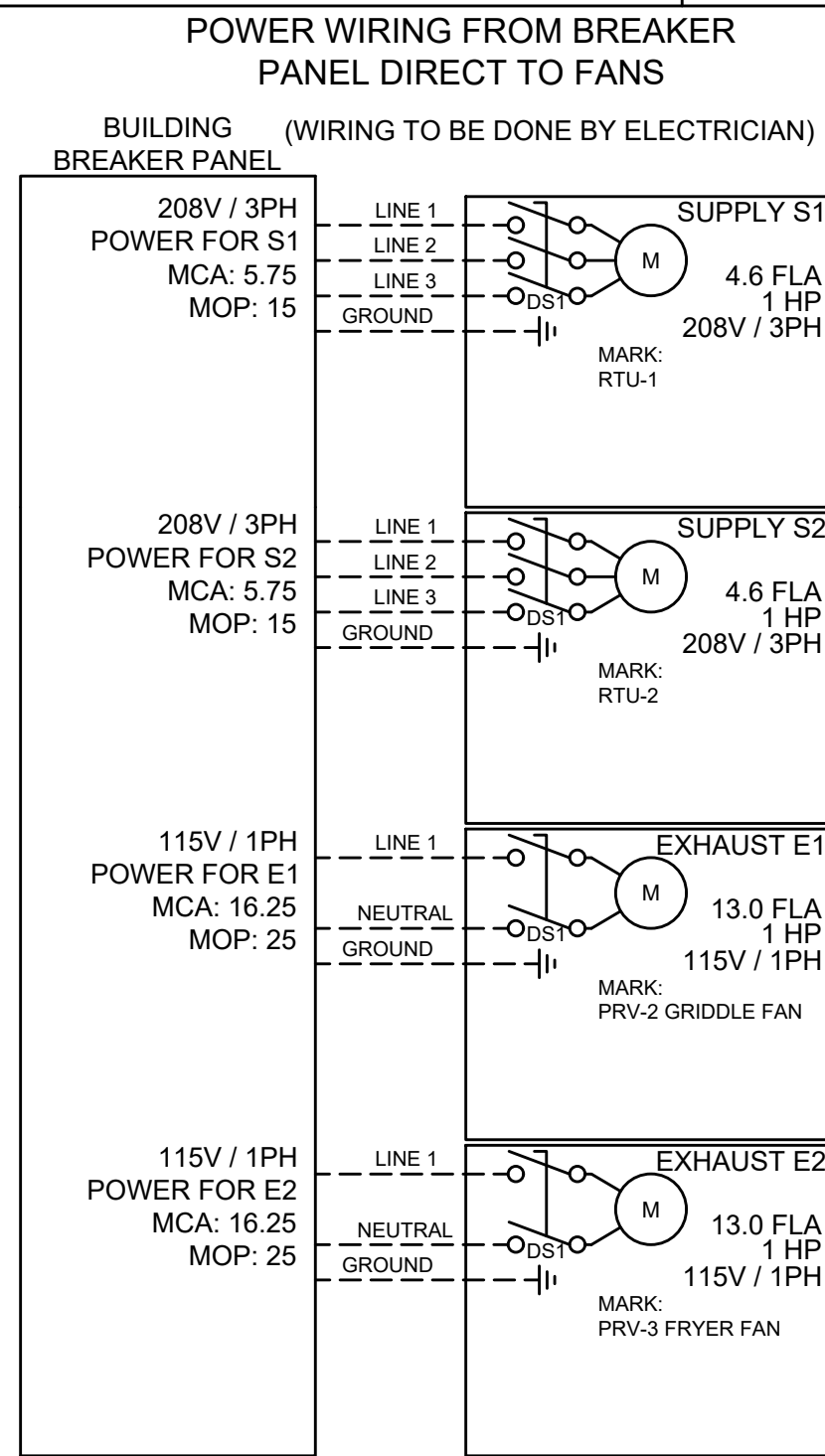
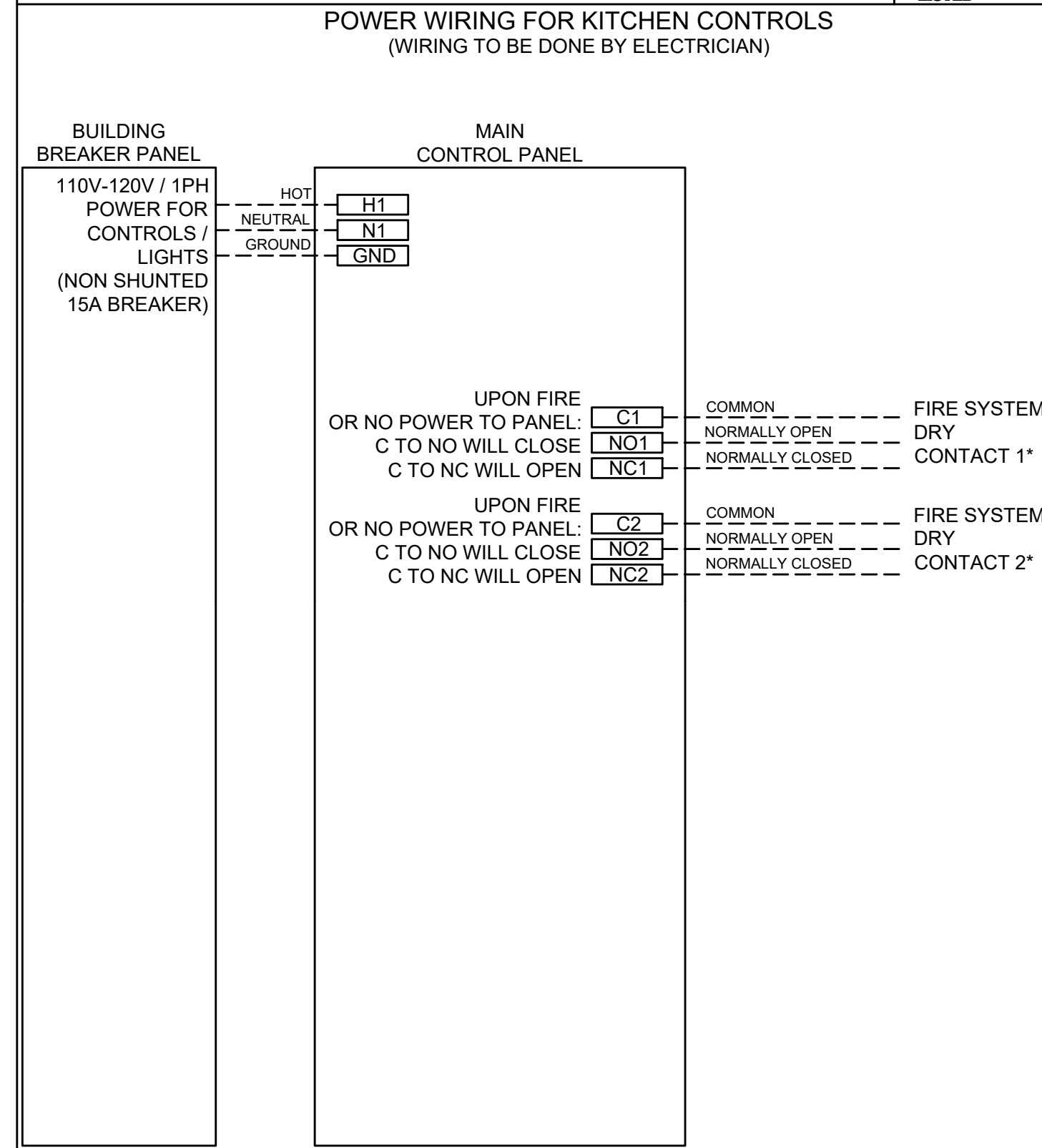
ATTENTION
L'APPAREIL DOIT ÊTRE MIS À LA TERRE CONFORMÉMENT AU CODE C.E. L'ALIMENTATION DOIT ÊTRE COUPÉE DURANT L'ENTRETIEN.

COMMERCIAL APPLIANCE OUTLET CENTER
ELECTRICAL RATINGS: 110-240V, 1PHASE, 50-60HZ, 15A
BASE FILE #E200616, ML FILE #E313951

PRG VERSION: V4
FIELD WIRED (CÂBLE LOCAL) -----
FACTORY WIRED (CÂBLE À L'USINE) -----

NE PAS RETIRER CES DESSINS DE CET ÉQUIPEMENT SAUF INDICATION CONTRAIRE. UTILISER DES CONDUCTEURS EN CUIVRE CLASSÉS 90 °C. SERRER LES BORNES DE COMMANDE ET DE MISE À LA TERRE À 8 LB-PO. SERRER LES COSSÉS/LES PALLMÉTATIONS AUX COUPLES INDICQUÉS POUR LE COMPOSANT. SERRER LES BORNES À VIS DE LA CARTE DE COMMANDE À 3.5 LB-PO. LA RÉSISTANCE DU CÂBLAGE DE COMMANDE LOCAL NE DOIT PAS DÉPASSER 0.75 OHM. POUR PLUS D'INFORMATION, CONSULTER LE MANUEL OU APPELER 1-800-371-6886

WIRING DIAGRAM CODE: #####
JOB NAME: CULVERS - OTTAWA, IL REMODEL
MODEL: XKC-CV-S-22-2-1-0
SERIAL NUMBER: WDSN#
MARK: CONTROLS



ZONE CONFIGURATION						HOOD CONFIGURATION						
ZONE #	ZONE	ROOM TEMP	WIRING DIAGRAM CODE: #####	PARAMETRES PAR DEFALT								
1	Z1	PRESET	JOB NAME: CULVERS - OTTAWA, IL REMODEL	FACTORY SETTINGS								
2	Z2	PRESET	MODEL: XKC-CV-S-22-2-1-0	TYPE: CV								
			SERIAL NUMBER: WDSN#	CONFIGURATION: STANDARD								
			MARK: CONTROLS	ZONES: 2								
			DOC NUMBER: #####	HOODS: 2								
			REV: #####	SUMP: 0								
				EXHAUST FANS: 2								
				SUPPLY FANS: 2								
				MB ROOM SENSOR: NO								
				MB TEMP SENSORS: 2								
				HIGH TEMP FAULT: NO								
				FREEZE PROTECTION: YES								
				GAS RESET: NO								
				FAN PROVING: NO								
				BMS: NONE								
				ZONE SETTINGS								
				SEE ZONE CONFIGURATION IN TABLE ON LEFT								
				HOOD SETTINGS								
				SEE HOOD CONFIGURATION IN TABLE ON LEFT								
				EXHAUST FAN SETTINGS								
				SEE FAN CONFIGURATION IN TABLE ON LEFT								
				SUPPLY FAN SETTINGS								
				SEE FAN CONFIGURATION IN TABLE ON LEFT								
				SENSOR SETTINGS								
				SEE HOOD CONFIGURATION IN TABLE ON LEFT								
				USER INTERFACE SETTINGS (MB)								
				FAN & LIGHT BUTTONS: SHOW FANS ONLY								
				USER INTERFACE SETTINGS (HCB)								
				NA								
				GENERAL SETTINGS								
				TIME ZONE: CENTRAL DAYLIGHT (DEFAULT)								
				FIRE/FAULT SETTINGS								
				EXHAUST DURING FIRE: MAX								
				SUPPLY DURING FIRE: OFF								
				LIGHTS DURING FIRE: OFF								
				BMS SETTINGS								
				NA								
				PRG VERSION: V4								
FAN CONFIGURATION												
FAN #	TYPE	FAN	FAN MARK	ZONE	MIN CFM	MAX CFM	MODBUS VFD	VFD ADDRESS	MIN FREQ	MAX FREQ	MIN VDC	MAX VDC
1	SUPPLY	S1	RTU-1	Z1	-	1500	NO	-	-	-	-	10.0
2	SUPPLY	S2	RTU-2	Z2	-	1500	NO	-	-	-	-	10.0
3	EXHAUST	E1	PRV-2 GRIDDLE FAN	Z2	-	1500	NO	-	-	-	-	9.9
4	EXHAUST	E2	PRV-3 FRYER FAN	Z1	-	1500	NO	-	-	-	-	8.7

PROJECT 5/2/2024
 ACCUREX W/ IA - 1970
 PHILLIP KRAFT
 PHILLIP.KRAFT@ACCUREX.COM
 (262)227-7865
 ACCUREX
 CULVERS - OTTAWA, IL
 REMODEL
 CONTROLS