

FOR NEXT TAB TECH

INTERNAL USE ONLY

There were a lot of issues on site when I was here last, recommend reading the issues in HUB for a more detailed view of the issues.

Attached picture are for the damper cable locations and what they go to

Main issues on leaving site:

MUA VFD cat5 to hood control panel and cat5 from MUA VFD to MUA control board not installed

MUA cooling not functional

KEF 1 hinge kit seal not installed

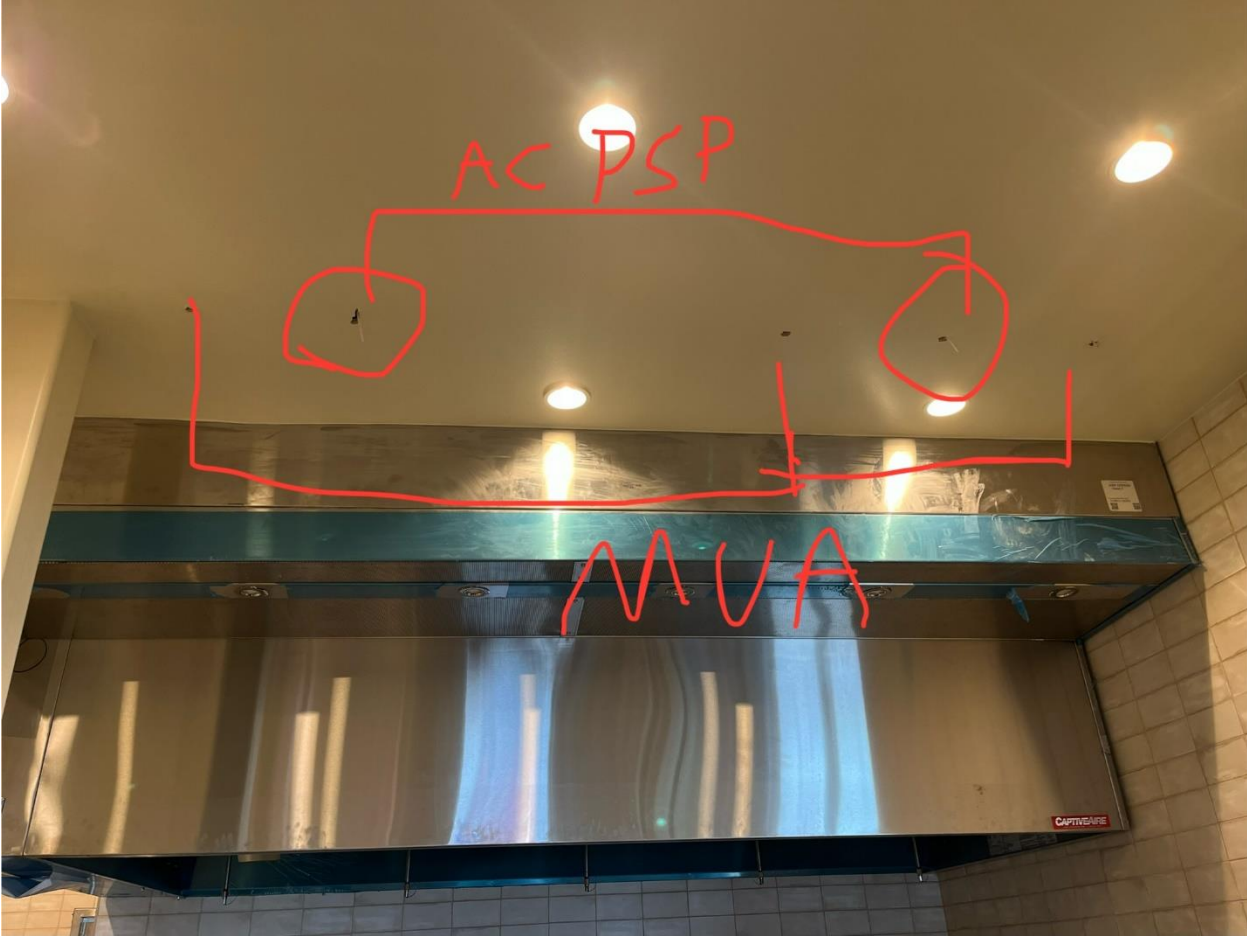
KEF 1 only reaching 80% of design at max speed.

RTU 1 and RTU 2 gas leak.

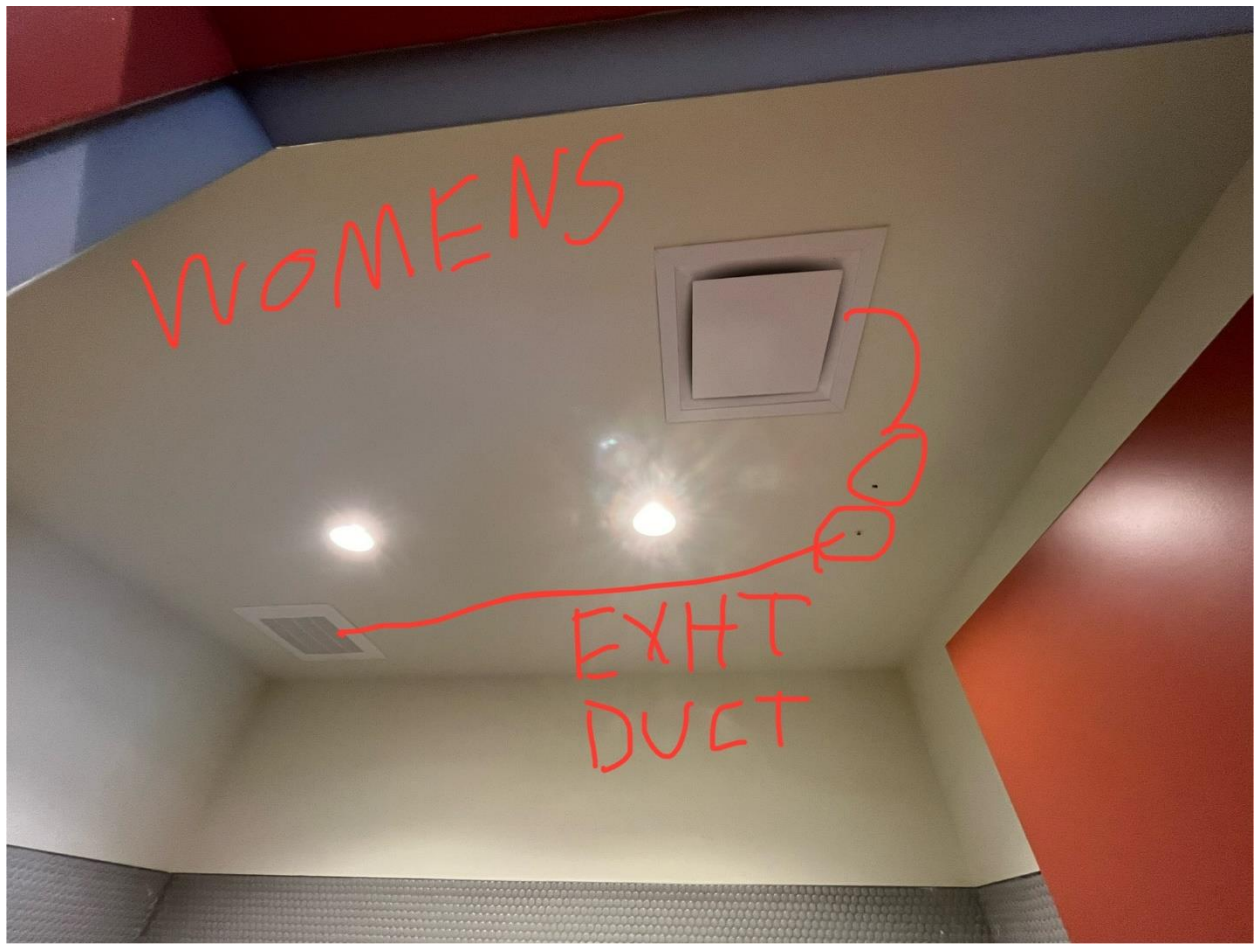
Notes:

I forgot to pack my plugs when I came here so if you could plug the traverse holes for the dining room and the pressure holes for the RTU's I would appreciate it.

Regards, Cody Collett 513-526-5087







WOMENS

EXHT
DUCT