



ISSUE DATE: 09.08.23

REVISED:

MECHANICAL PLANS

Marshalls
MOREHEAD
414 KROGER CENTER DRIVE
MOREHEAD, KY 40351
SCALE: AS NOTED DRAWN: DSN: IM CHK: DS FRM:

SEAL/STAMP:

55.23.032

SHEET

M1

THE ARCHITECT ASSUMES NO RESPONSIBILITY OR LIABILITY FOR THE USE OF THESE PLANS FOR ANY PROJECT OTHER THAN SPECIFICALLY AUTHORIZED BY THEM AND BIDDING AND SELLING OR SUCH SPECIFIC BUILDING USE IS ONLY APPLICABLE IN AREAS MEETING THE STATED DESIGN CRITERIA.

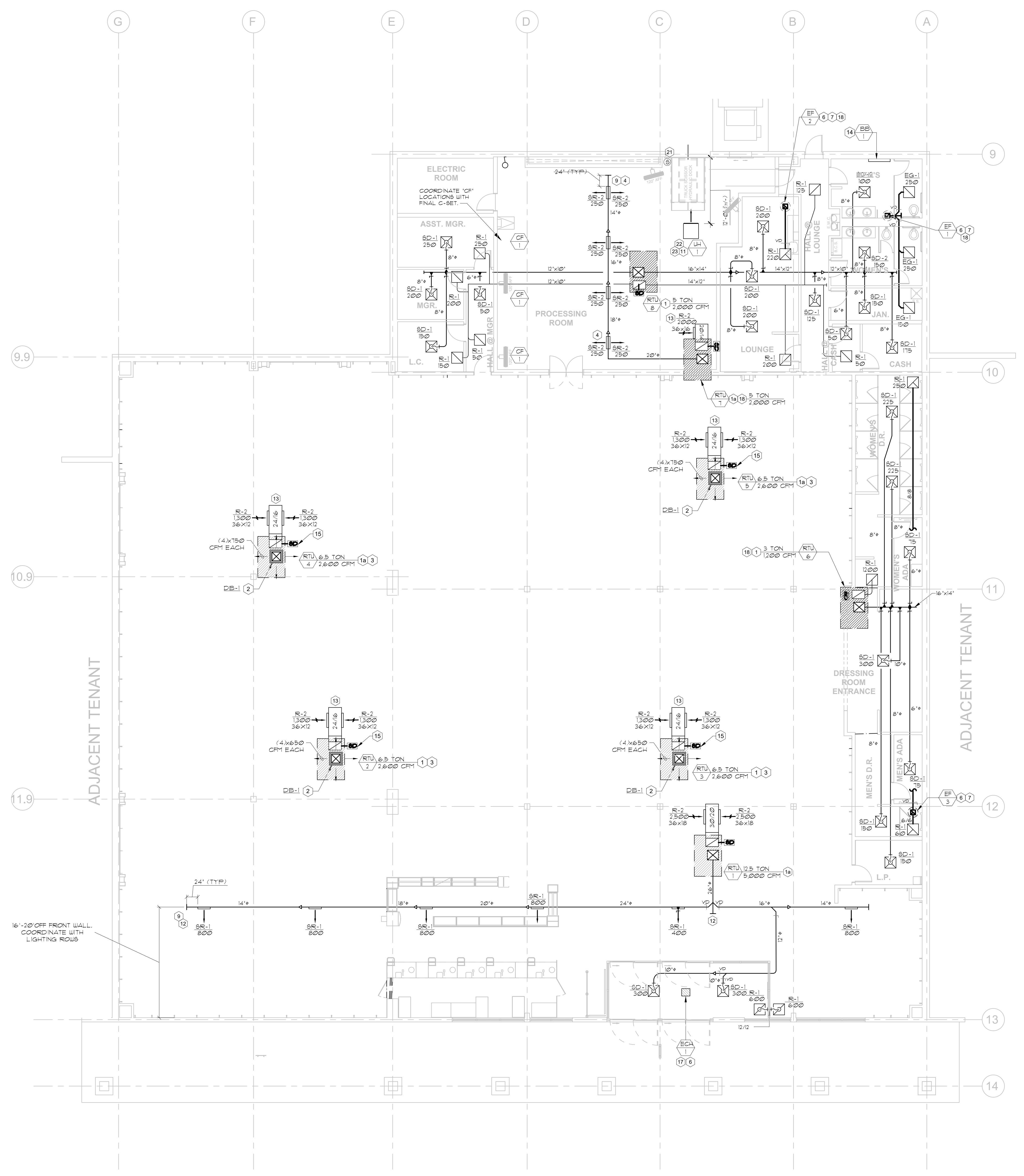
KEYED NOTES:

- 1) NEW ROOFTOP UNIT PROVIDE AND INSTALL FULL ROOF CURB AND FRAME FOR NEW RTU AND CURBS PROVIDE NEW ROOF OPENING AND FLASHING AS REQUIRED ABOVE ROOF. COORDINATE WITH GENERAL CONTRACTOR. COORDINATE WITH EXISTING STRUCTURE AND OVERHEAD UTILITIES AND ADJUST RTU LOCATIONS AS REQUIRED.
- 2) NEW ROOFTOP UNIT OVER EXISTING CURBS VIA CURB-ADAPTER. GC TO COORDINATE WITH TJK VENDOR AND FIELD VERIFY FEASIBILITY.
- 3) MECHANICAL CONTRACTOR TO PROVIDE DUCT ROUTING & DROPS FROM RTU DOWN TO CEILING DROP BOX DIFFUSER LOCATION. PROVIDE TRANSITION FROM RECTANGULAR TO ROUND DUCT IF REQUIRED. VERIFY. COORDINATE WITH GAS DOT SHEETS.
- 4) NEW RTU LOCATED DIRECTLY ABOVE DROP BOX DIFFUSER LOCATIONS.
- 5) INSTALL REGISTERS AT -20 DEGREES. PROVIDE NECK AND DAMPERS IN ROUND DUCT AS REQUIRED. POINT DUCTWORK & 15'-0" AFF MINIMUM TO BOTTOM OF LARGEST DUCT. VERIFY FINAL MOUNTING HEIGHT WITH TJK. CONSTRUCTION MANAGER PRIOR TO INSTALLATION.
- 6) INSTALL RETURN TRANSFER GRILLES OR SUPPLY REGISTERS AS HIGH TO ROOF DECK AS POSSIBLE ON SALES FLOOR. AIR DEVICES TO NOT INTERFERE WITH FUTURE DECOR.
- 7) CONTROL VIA EMPLOYEE LIGHTING CONTACTOR RELAY.
- 8) NEW ROOF MOUNTED EXHAUST FAN. PROVIDE AND INSTALL FULL ROOF CURB. PROVIDE FLASHING AS REQUIRED ABOVE ROOF. COORDINATE WITH EXISTING STRUCTURE AND OVERHEAD UTILITIES AND ADJUST RTU LOCATIONS AS REQUIRED.
- 9) HOLLOW METAL DOORS SHOULD BE PROVIDED WITH UNDERCUT FOR ADDITIONAL MAKE-UP AIR. PROVIDER OF RECORD TO COORDINATE WITH ARCHITECTURAL AND DOOR PROVIDER.
- 10) DUCTWORK TO EXTEND 2'-0" BEYOND LAST REGISTER.
- 11) THERMOSTATE SHOWN FOR REFERENCE ONLY. FINAL LOCATIONS TO BE DETERMINED BY TJK A/E AS WELL AS INSTALLED VIA NOVAT PACKAGE.
- 12) HEATER LOCATION TO BE FIELD VERIFIED AND CORRECTED WITH TJK PROJECT MANAGER PRIOR TO INSTALLATION.
- 13) SALES FLOOR REGISTERS TO BE MOUNTED AT -20' DOWNWARD. BOTTOM OF LARGEST DIAMETER DUCT TO BE MOUNTED AT 12'-6" ABOVE FINISHED FLOOR. FINAL LOCATION AND ELEVATION TO BE COORDINATED WITH ALL TRADES AND APPROVED BY TJK CONSTRUCTION MANAGER PRIOR TO INSTALLATION.
- 14) BOTTOM OF RETURN AIR DUCTWORK TO BE 9'-6" AFF MINIMUM WITH GRILLES ON VERTICAL FACE OF DUCTWORK. COORDINATE FINAL ELEVATION WITH TJK CM PRIOR TO INSTALLATION. NOTIFY OF ALL LOCATIONS SHALL TAKE PRECEDENCE. INSTALLATION LOCATION SHALL NOT IMPROVE ON REQUIRED ADA CLEARANCES. COORDINATE FINAL LOCATION WITH TJK CM. DOES NOT NEED TO BE INSTALLED ON THE EXTERIOR WALL IF UNFEASIBLE. DO NOT INSTALL UNDER HAND CRITERIA. NO EXCEPTION.
- 15) DUCT MOUNTED SMOKE DETECTOR FINISHED BY FIRE ALARM CONTRACTOR AND INSTALLED IN DUCT BY MECHANICAL CONTRACTOR DOWNSTREAM OF AIR FLOW AND AHEAD OF ANY BRANCH CONNECTIONS INTERLOCKING WITH FIRE ALARM SYSTEM RELAY AND ROOFTOP UNIT. BUDGET CONTACT SHALL BE PROVIDED BY MECHANICAL CONTRACTOR. ALL OTHER WIRING BY FIRE ALARM CONTRACTOR. JAPAN DETECTION OF SMOKE, ROOFTOP UNIT SHALL SHUT DOWN UPON AND INITIATE SUPERVISORY SIGNAL. AT THE 25% DESIGN POINT. SHALL BE WITH TJK PROJECT MANAGER ON PUNCHING METHOD REQUIRED AFTER REMOVAL OF EXISTING ROOFTOP EQUIPMENT. IDEALLY THE UNUSED EQUIPMENT SHOULD BE DISCONNECTED. MAJOR SURE AND REMOVED FROM THE ROOF. THE EXISTING ROOF OPENING / PENETRATION SHALL BE DECKED OVER. INSULATED, SEALED AND ROOF PATCHED. THE INTERIOR SIDE OF OPENING SHALL MATCH EXISTING AND BE PAINTED PER TJK CRITERIA SET. IN THE EVENT THIS CANNOT BE ACHIEVED AND IT IS DETERMINED BY THE TJK PROJECT MANAGER THAT CAPPING THE EXISTING OPENING / PENETRATION IS THE BEST ALTERNATIVE THEN AFTER REMOVAL OF EXISTING EQUIPMENT AN INSULATED WEATHER TIGHT GAP SHALL BE MECHANICALLY FASTENED TO THE EXISTING ROOF CURB. BUNGALUM BARS SHALL BE INSTALLED IF NOT ALREADY PRESENT. THE UNDERSIDE OF THE OPENING SHALL BE FRAMED IN AND SKINNED WITH SIMILAR MATERIAL AS THE UNDERSIDE OF ROOF DECK AND BE MADE TO MATCH EXISTING. PAINTED PER TJK CRITERIA SET.
- 16) COORDINATE FINAL LOCATION OF VESTIBULE CEILING HEATER WITH TJK A/E.
- 17) COORDINATE FINAL LOCATION AND VERIFY 18" CLEARANCE IS MAINTAINED TO THE PARAPET WALL OR MAKE FALL PROTECTION PROVISIONS ABOVE ROOF IF PARAPET 18" OR GREATER.
- 18) PROVIDE LINE VOLTAGE REVERSE ACTING THERMOSTAT. INSTALL 48" AFF. ELECTRICAL CONTRACTOR SHALL WIRE DEVICE. COORDINATE WITH ELECTRICAL CONTRACTOR. SET THERMOSTAT TO ENERGIZE FAN AT 30°F (ADJ. ON -45°F).
- 19) PROVIDE 14x14 LOUVER IN ELECTRICAL ROOM DOOR FOR EXHAUST FAN MAKEUP AIR. COORDINATE WITH ARCH DOOR SCHEDULE.
- 20) NOVAT SAVVY CONTROLLER FOR UH1. INSULATE EXTERIOR WALL BEHIND SENSOR. CAULK WIRE PENETRATION THRU WALL. INSTALL SENSOR 8'-0" AFF.
- 21) PROVIDE GAS FIRED UNIT HEATER. SUSPEND FROM STRUCTURE ABOVE WITH STEEL CHANNEL AND THERMOSTAT. PROVIDE DOUBLE DUCT ON ROOF ENDS. MOUNT BOTTOM OF HEATER 12'-0" AFF. MAINTAIN MANUFACTURER'S RECOMMENDED CLEARANCES TO COMBUSTIBLES. FINAL UNIT HEATER LOCATION AND HEIGHT TO BE VERIFIED BY TJK CM PRIOR TO INSTALLATION. GC TO COORDINATE ALL UTILITIES WITH ASSOCIATED TRADES (GAS AND POWER).
- 22) TRANSITION FROM VENT OUTLET TO 8" DIA. TYPE 'B' VENT AND EXTEND UP THRU ROOF. PROVIDE ROOF JACK, STORM COLLAR AND ALL-WEATHER GAP.

MECHANICAL SYMBOLS AND ABBREVIATIONS

ABBREVIATIONS:	DOUBLE LINE DUCT SYMBOLS:
AFB ABOVE FINISHED FLOOR	NEW SHEET METAL DUCTWORK 4 SIZE
AU AUTHORITY HAVING JURISDICTION	EXISTING DUCTWORK/PIPING TO REMAIN
BHP BRAKE HORSEPOWER	EXISTING DUCTWORK/PIPING TO BE REMOVED
BTU BRITISH THERMAL UNIT	SUPPLY OR OUTSIDE AIR DUCT
CFM CUBIC FEET PER MINUTE	RETURN DUCT
DB DRY BULB	EXHAUST DUCT
EC ELECTRICAL CONTRACTOR	DUCT TRANSITION
EA EXHAUST AIR	DUCT TRANSITION - RECTANGULAR TO ROUND
EAT ENTERING AIR TEMPERATURE	SUPPLY DUCT ELBOW - UP and DOWN
ESP EXTERNAL STATIC PRESSURE	RETURN DUCT ELBOW - UP and DOWN
GC GENERAL CONTRACTOR	EXHAUST DUCT ELBOW - UP and DOWN
HZ FREQUENCY	FIXED VANE TURNING ELBOW
LAT LEAVING AIR TEMPERATURE	FULL RADIUS ELBOW
MC MECHANICAL CONTRACTOR	RECTANGULAR BRANCH WITH VOLUME DAMPER (RECTANGULAR MAIN)
NFPA NATIONAL FIRE PROTECTION ASSOCIATION	ROUND BRANCH WITH VOLUME DAMPER (RECTANGULAR MAIN)
NC NOISE CRITERIA	ROUND BRANCH WITH VOLUME DAMPER (ROUND MAIN)
OA OUTSIDE AIR	FLEXIBLE DUCTWORK
PC PLUMBING CONTRACTOR	
PD PRESSURE DROP	
RA RETURN AIR	
RTU ROOFTOP UNIT	
SA SUPPLY AIR	
TSP TOTAL STATIC PRESSURE	
TYP TYPICAL	
UNO UNLESS NOTED OTHERWISE	
WC WATER COLUMN	
WB WET BULB	
	EQUIPMENT:
SUPPLY DIFFUSER (4-WAY THROW)	ROOF MOUNTED EXHAUST FAN
SUPPLY DIFFUSER (3-WAY THROW)	PACKAGED ROOFTOP UNIT
SUPPLY DIFFUSER (2-WAY THROW)	GAS UNIT HEATER
SUPPLY DIFFUSER (1-WAY THROW)	CEILING HEATER
SIDEWALL MOUNTED SUPPLY REGISTER	THERMOSTAT
RETURN/TRANSFER GRILLE	REMOTE TEMPERATURE SENSOR
EXHAUST GRILLE	CARBON / CONTROLLER
	CARBON DIOXIDE SENSOR
	SMOKE DETECTOR
GENERAL REFERENCES/NOTATIONS:	
DETAIL OR SECTION REFERENCE	
CONNECT TO EXISTING	
TAGGED NOTE DESIGNATION	
REVISION DESIGNATION	
EQUIPMENT DESIGNATION	
DIFFUSER TAG NECK SIZE	
GRILLE/REGISTER/DIFFUSER DESIGNATION	
3/4" DOOR UNDERCUT - COORDINATE WITH GENERAL CONTRACTOR	

NOTES:
REFER TO PLANS, EQUIPMENT SCHEDULES AND SPECIFICATIONS FOR DETAILED INFORMATION REGARDING ALL EQUIPMENT AND DEVICES.
MECHANICAL CONTRACTOR SHALL PROVIDE ALL EQUIPMENT AND DEVICES UNLESS SPECIFICALLY NOTED OTHERWISE.



1 MECHANICAL PLAN
M1 N.T.S.

16'-20" OFF FRONT WALL. COORDINATE WITH LIGHTING ROWS

COORDINATE 'C' LOCATIONS WITH FINAL 'C'-SET.

