



SUBMITTAL

Project

Ashley Homestore R1

Date

Wednesday, September 18, 2024

**RTU-1 PAGE 2
RTU-2 PAGE 10
RTU-3 PAGE 18
RTU-4 PAGE 24
RTU-5 THRU 8 PAGE 31
RTU-9,11 PAGE 39
RTU-10 PAGE 44**

Unit Report For **RTU-1**

Project: Ashley Homestore R1
Prepared By:

12/11/2024
05:36PM

Unit Parameters

Unit Model: **50FE-M20A2N6-8F3A0**
 Unit Size: **20 (17.5 Tons)**
 Volts-Phase-Hertz: **460-3-60**
 Heating Type: **Electric**
 Refrigerant: **R-454B**
 Heat Control: **Two-Stage Cooling, Single Circuit**
 Duct Cfg: **Vertical Supply / Vertical Return**

Dimensions (ft. in.) & Weight (lb.) ***

Unit Length: **10' 7.875"**
 Unit Width: **7' 2.375"**
 Unit Height: **3' 11.75"**
Total Operating Weight: 1924 lb

*** Weights and Dimensions are approximate. Weight does not include unit packaging. Approximate dimensions are provided primarily for shipping purposes. For exact dimensions and weights, refer to appropriate product data catalog.

Lines and **Filters**

Condensate Drain Line Size: **3/4**
 Return Air Filter Type: **Throwaway**
 Return Air Filter Quantity: **6**
 Return Air Filter Size: **20 x 25 x 2**

Selection includes construction throwaway filter into the base fan curve.

Unit Configuration

Std / Med Static - **EcoBlue** Vane Axial, Vertical Supply
 Pre-Coat Al/Cu - Al/Cu Louvered Hail Guards
 Electromechanical Controls with POL224 EconomizerONE (includes FDD)
 Standard Leak Enthalpy Economizer with Barometric Relief
 Hinged Access Panels
 Standard Packaging

Warranty Information

5-Year compressor parts (STD.)
 5-Year electric heater (STD.)
 1-Year parts (STD.)

No optional warranties were selected.

NOTE: Please see Warranty Catalog 500-089 for explanation of policies and ordering methods.

Ordering Information

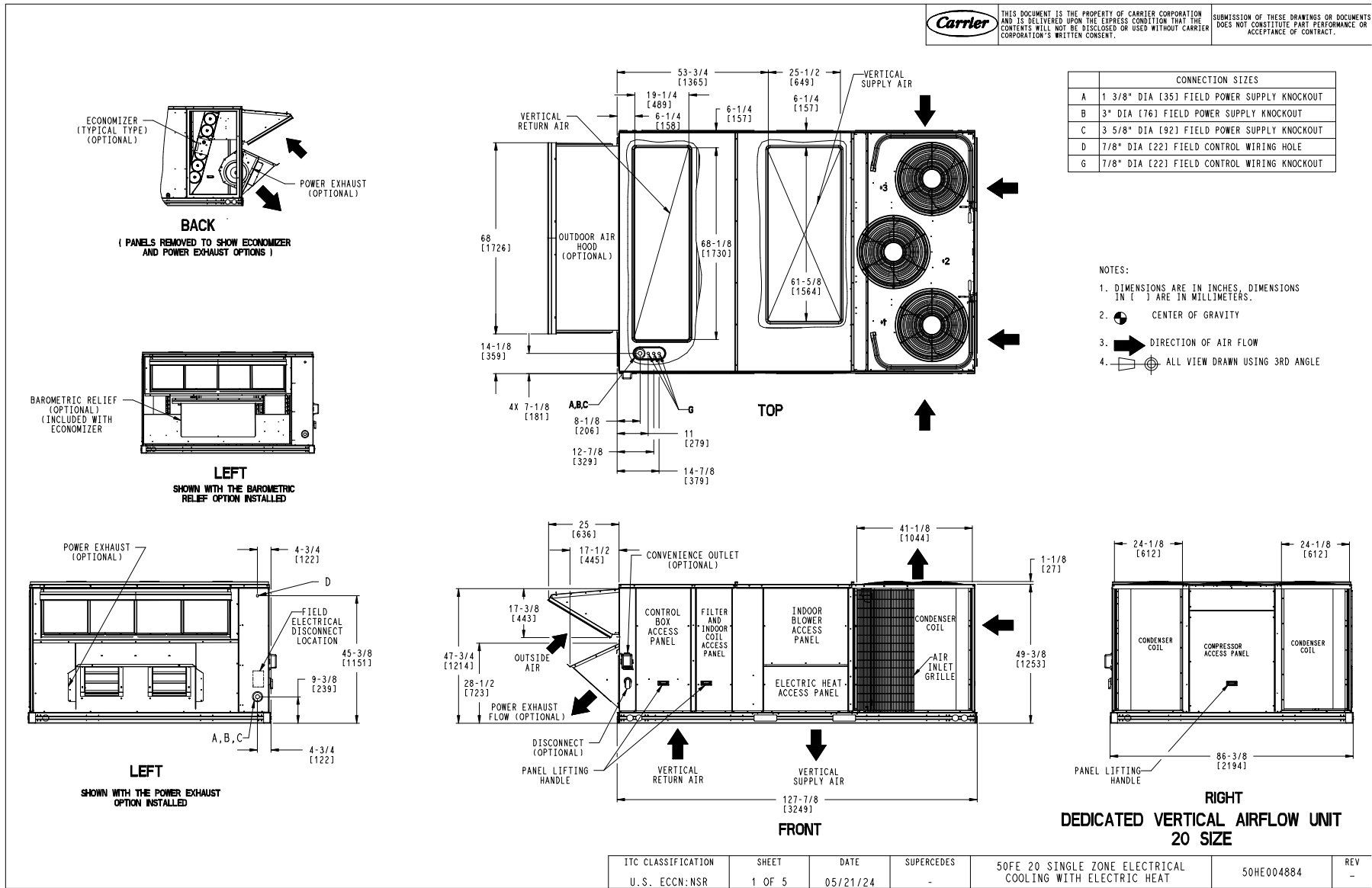
Part Number	Description	Quantity
50FE-M20A2N6-8F3A0	Rooftop Unit	1
	Base Unit	
	Pre-Coat Al/Cu - Al/Cu Louvered Hail Guards	
	Hinged Access Panels	
	Electromechanical control, Low Leak EconomizerONE, enthalpy economizer, barometric relief and POL224	
Field Installed Accessories		
33CONNECTSTAT43FX	Carrier Connect™ Wi-Fi® 7-day programmable/non-prog	1
CRHEATER457A00	Electric Heater	1

Certified Drawing for RTU-1

Project: Ashley Homestore R1
Prepared By:

12/11/2024
05:36PM

Carrier THIS DOCUMENT IS THE PROPERTY OF CARRIER CORPORATION AND IS DELIVERED UPON THE EXPRESS CONDITION THAT THE CONTENTS WILL NOT BE DISCLOSED OR USED WITHOUT CARRIER CORPORATION'S WRITTEN CONSENT. SUBMISSION OF THESE DRAWINGS OR DOCUMENTS DOES NOT CONSTITUTE PART PERFORMANCE OR ACCEPTANCE OF CONTRACT.



ITC CLASSIFICATION	SHEET	DATE	SUPERCEDES	50FE 20 SINGLE ZONE ELECTRICAL COOLING WITH ELECTRIC HEAT	50HE004884	REV
U.S. ECCN:NSR	1 OF 5	05/21/24	-			-

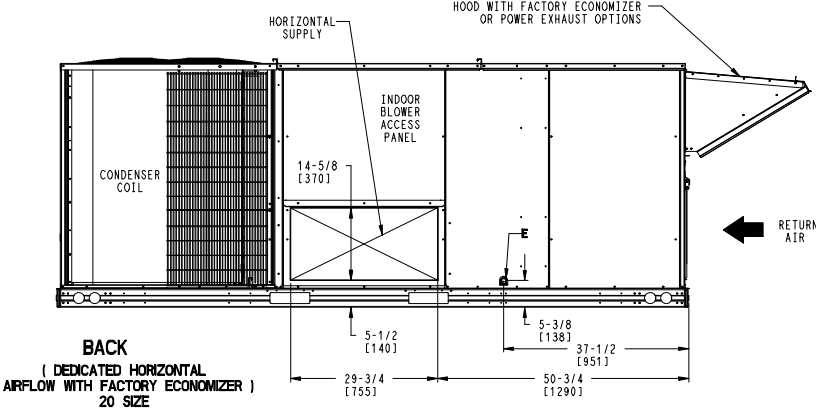
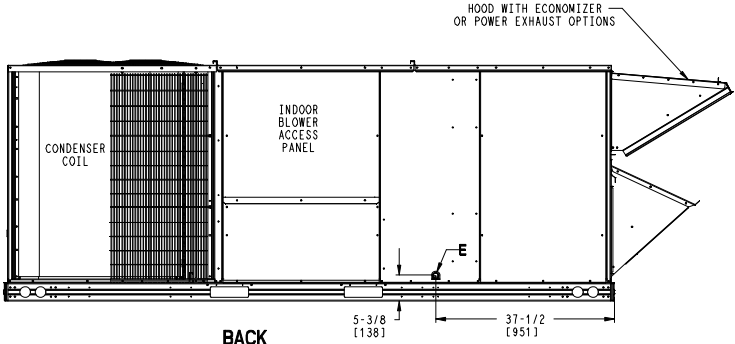
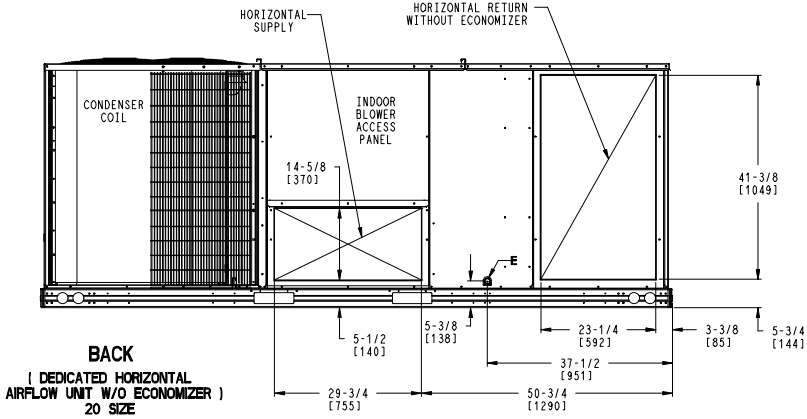
Certified Drawing for RTU-1

Project: Ashley Homestore R1
 Prepared By:

12/11/2024
 05:36PM

CONNECTION SIZES	
E	3/4"-14 NPT CONDENSATE DRAIN

Carrier THIS DOCUMENT IS THE PROPERTY OF CARRIER CORPORATION AND IS DELIVERED UPON THE EXPRESS CONDITION THAT THE CONTENTS WILL NOT BE DISCLOSED OR USED WITHOUT CARRIER CORPORATION'S WRITTEN CONSENT. SUBMISSION OF THESE DRAWINGS OR DOCUMENTS DOES NOT CONSTITUTE PART PERFORMANCE OR ACCEPTANCE OF CONTRACT.



ITC CLASSIFICATION	SHEET	DATE	SUPERCEDES	50FE 20 SINGLE ZONE ELECTRICAL COOLING WITH ELECTRIC HEAT	50HE004884	REV
U. S. ECCN: NSR	3 OF 5	05/21/24	-			-

Certified Drawing for RTU-1

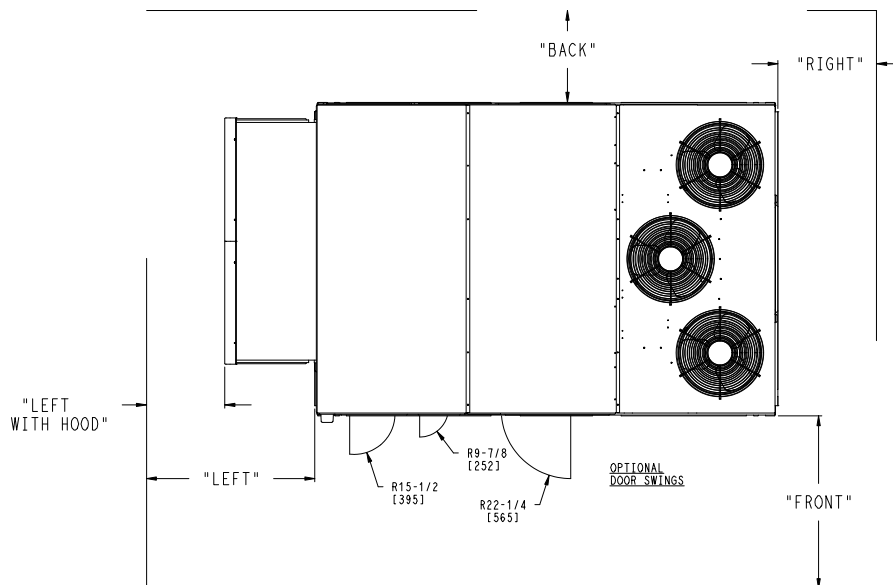
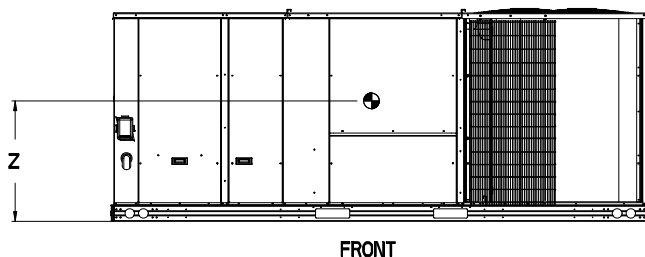
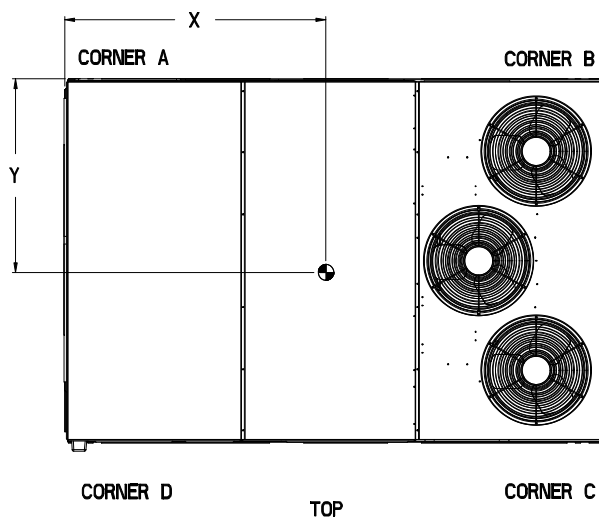
Project: Ashley Homestore R1
Prepared By:

12/11/2024
05:36PM

UNIT	STD UNIT WEIGHT *		CORNER WEIGHT (A)		CORNER WEIGHT (B)		CORNER WEIGHT (C)		CORNER WEIGHT (D)		C.G.					
	LBS.	KG.	LBS.	KG.	LBS.	KG.	LBS.	KG.	LBS.	KG.	X	Y	Z			
50FE 20	1673	759	356	161	445	202	484	220	388	176	71	[1803]	45	[1143]	16 1/2	[419]

Carrier THIS DOCUMENT IS THE PROPERTY OF CARRIER CORPORATION AND IS DELIVERED UPON THE EXPRESS CONDITION THAT THE CONTENTS WILL NOT BE DISCLOSED OR USED WITHOUT CARRIER CORPORATION'S WRITTEN CONSENT. SUBMISSION OF THESE DRAWINGS OR DOCUMENTS DOES NOT CONSTITUTE PART PERFORMANCE OR ACCEPTANCE OF CONTRACT.

* STANDARD UNIT WEIGHT IS WITHOUT ELECTRIC HEAT AND WITHOUT PACKAGING. FOR OTHER OPTIONS AND ACCESSORIES, REFER TO THE PRODUCT DATA CATALOG.



NOTES:

1. CLEARANCE ABOVE THE UNIT TO BE 72"
2. FOR ALL MINIMUM CLEARANCES LOCAL CODES OR JURISDICTIONS MAY PREVAIL.

SURFACE	SERVICE WITH:		OPERATING CLEARANCE
	CONDUCTIVE BARRIER	NONCONDUCTIVE BARRIER	
FRONT	48 [1219mm]	36 [914mm]	18 [457mm]
LEFT	48 [1219mm]	42 [1067mm]	18 [457mm]
BACK	42 [1067mm]	36 [914mm]	18 [457mm]
LEFT WITH HOOD	36 [914mm]	36 [914mm]	18 [457mm]
RIGHT	36 [914mm]	36 [914mm]	18 [457mm]
TOP	72 [1829mm]	72 [1829mm]	72 [1829mm]

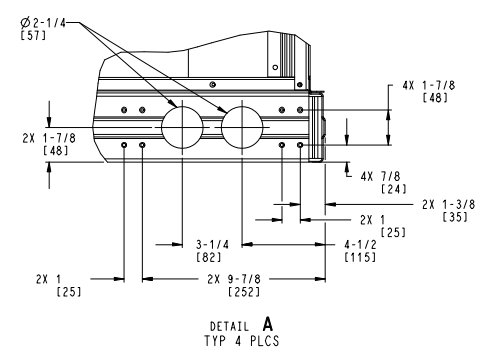
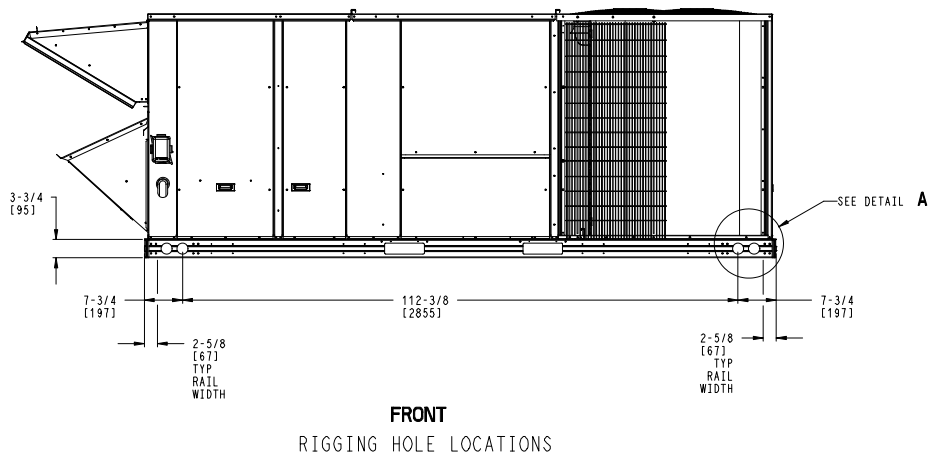
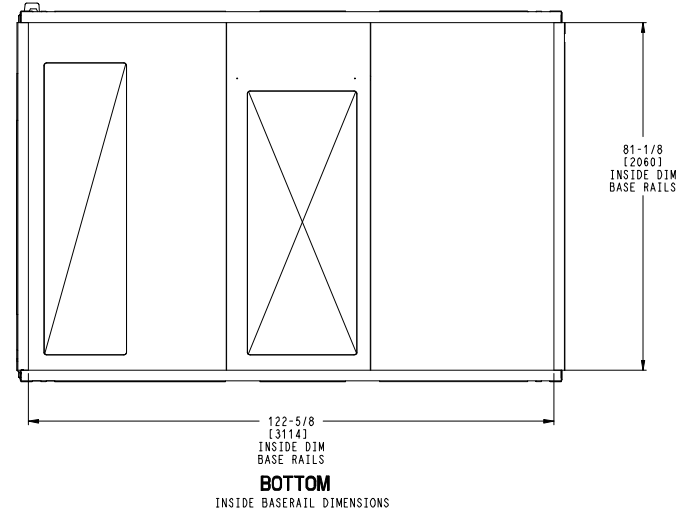
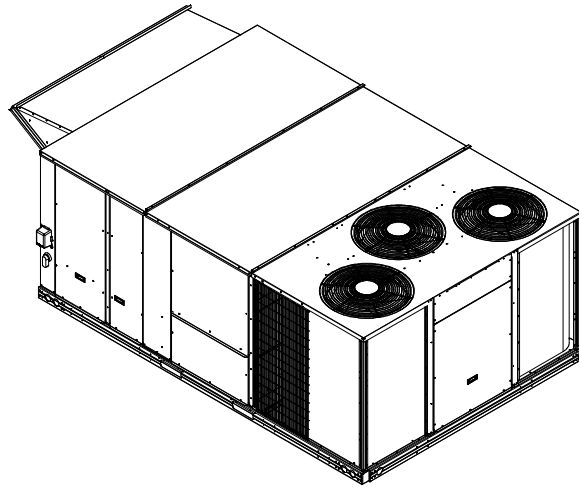
ITC CLASSIFICATION	SHEET	DATE	SUPERCEDES	50FE 20 SINGLE ZONE ELECTRICAL COOLING WITH ELECTRIC HEAT	50HE004884	REV
U.S. ECCN: NSR	4 OF 5	05/21/24	-			-

Certified Drawing for RTU-1

Project: Ashley Homestore R1
Prepared By:

12/11/2024
05:36PM

	THIS DOCUMENT IS THE PROPERTY OF CARRIER CORPORATION AND IS DELIVERED UPON THE EXPRESS CONDITION THAT THE CONTENTS WILL NOT BE DISCLOSED OR USED WITHOUT CARRIER CORPORATION'S WRITTEN CONSENT.	SUBMISSION OF THESE DRAWINGS OR DOCUMENTS DOES NOT CONSTITUTE PART PERFORMANCE OR ACCEPTANCE OF CONTRACT.
---	---	---



ITC CLASSIFICATION	SHEET	DATE	SUPERCEDES	50FE 20 SINGLE ZONE ELECTRICAL COOLING WITH ELECTRIC HEAT	50HE004884	REV
U. S. ECCN: NSR	5 OF 5	05/21/24	-			-

Performance Summary For RTU-1

Project: Ashley Homestore R1
Prepared By:

12/11/2024
05:36PM

Part Number: 50FE-M20A2N6-8F3A0

Refrigerant: R-454B
ARI EER: 11.00
IEER: 14.7

Base Unit Dimensions

Unit Length: 127.9 in
Unit Width: 86.4 in
Unit Height: 47.8 in

Operating Weight

Base Unit Weight: 1673 lb
Standard Leak Enthalpy Economizer with Barometric Relief: 246 lb
Hinged Access Panels: 5 lb
Total Operating Weight: 1924 lb

Unit

Unit Voltage-Phase-Hertz: 460-3-60
Air Discharge: Vertical
Fan Drive Type: Vane Axial
Actual Airflow: 7000 CFM
Site Altitude: 0 ft

Cooling Performance

Condenser Entering Air DB: 95.0 F
Evaporator Entering Air DB: 80.0 F
Evaporator Entering Air WB: 67.0 F
Entering Air Enthalpy: 31.44 BTU/lb
Evaporator Leaving Air DB: 58.0 F
Evaporator Leaving Air WB: 56.8 F
Evaporator Leaving Air Enthalpy: 24.24 BTU/lb
Gross Cooling Capacity: 226.69 MBH
Gross Sensible Capacity: 166.33 MBH
Compressor Power Input: 17.29 kW
Coil Bypass Factor: 0.103

Heating Performance

Heating Airflow: 7000 CFM
Entering Air Temp: 70.0 F
Leaving Air Temp: 80.4 F
Electric Heating Capacity: 23.00 kW

Supply Fan

External Static Pressure: 0.80 in wg
Options / Accessories Static Pressure
Electric Heaters: 0.03 in wg
Economizer: 0.07 in wg
Application External Static (ESP + Unit Opts/Acc.): 0.90 in wg
Fan RPM: 1597
Fan Power: 2.94 BHP
NOTE: Selected IFM RPM Range: 1048 - 2000

Selection includes construction throwaway filter into the base fan curve. This filter is not MERV Rated.

Electrical Data

Voltage Range: 414 - 506
Compressor #1 RLA: 15
Compressor #1 LRA: 123
Compressor #2 RLA: 13.9

Performance Summary For RTU-1

Project: Ashley Homestore R1
Prepared By:

12/11/2024
05:36PM

Compressor #2 LRA:.....	100
Actual Electric Heater kW:.....	23
Electric Heater FLA:.....	30.1
Indoor Fan Motor Type:.....	MED
Indoor Fan Motor FLA (Total):.....	3
Power Supply MCA:.....	45
Power Supply MOC (Fuse or HACR):.....	50
Disconnect Size FLA:.....	43
Disconnect Size LRA:.....	237
Electrical Convenience Outlet:.....	None
Outdoor Fan [Qty / FLA (ea)]:.....	3 / 0.9
Electric Heater Part Number:.....	CRHEATER457A00
Electric Heater Number of Stages:.....	2

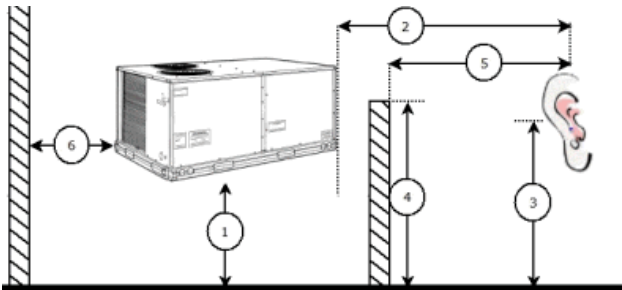
Control Panel SCCR: 5kA RMS at Rated Symmetrical Voltage

Acoustics

Sound Power Levels, db re 10E-12 Watts

	Discharge	Inlet	Outdoor
63 Hz	89.0	77.0	92.2
125 Hz	88.0	71.9	83.9
250 Hz	86.8	67.3	80.4
500 Hz	78.8	63.8	81.8
1000 Hz	77.9	63.9	78.7
2000 Hz	74.9	57.3	76.5
4000 Hz	70.4	47.9	72.2
8000 Hz	60.3	39.0	65.4
A-Weighted	83.7	67.5	84.1

Advanced Acoustics



Advanced Acoustics Parameters

- 1. Unit height above ground:..... **30.0** ft
- 2. Horizontal distance from unit to receiver:..... **50.0** ft
- 3. Receiver height above ground:..... **5.7** ft
- 4. Height of obstruction:..... **0.0** ft
- 5. Horizontal distance from obstruction to receiver:..... **0.0** ft
- 6. Horizontal distance from unit to obstruction:..... **0.0** ft

Detailed Acoustics Information

Octave Band Center Freq. Hz	63	125	250	500	1k	2k	4k	8k	Overall
A	92.2	83.9	80.4	81.8	78.7	76.5	72.2	65.4	93.6 Lw

Performance Summary For RTU-1

Project: Ashley Homestore R1
 Prepared By:

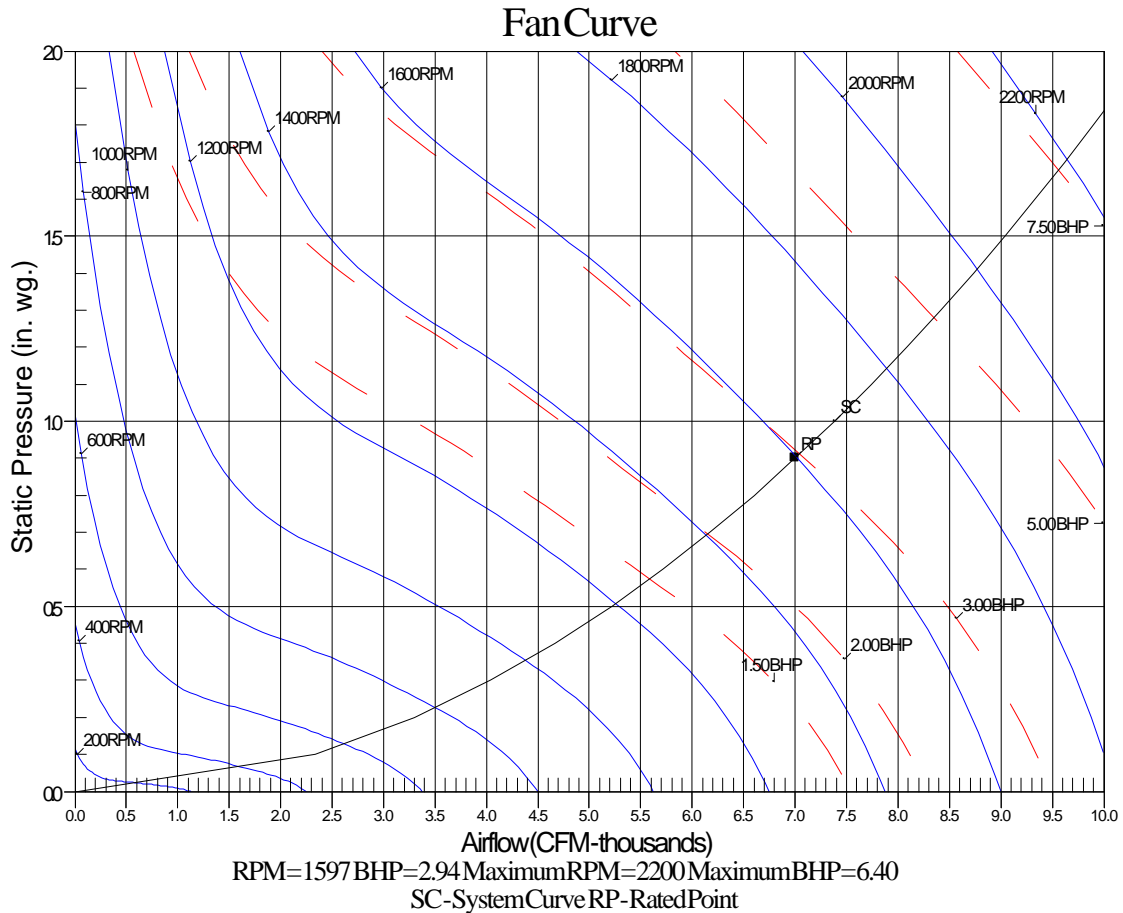
12/11/2024
 05:36PM

B	66.0	67.8	71.8	78.6	78.7	77.7	73.2	64.3	84.1 LwA
C	59.8	51.5	48.0	49.4	46.3	44.1	39.8	33.0	61.2 Lp
D	33.6	35.4	39.4	46.2	46.3	45.3	40.8	31.9	51.7 LpA

Legend

- A Sound Power Levels at Unit's Acoustic Center, Lw
- B A-Weighted Sound Power Levels at Unit's Acoustic Center, LwA
- C Sound Pressure Levels at Specific Distance from Unit, Lp
- D A-Weighted Sound Pressure Levels at Specific Distance from Unit, LpA

Calculation methods used in this program are patterned after the ASHRAE Guide; other ASHRAE Publications and the AHRI Acoustical Standards. While a very significant effort has been made to insure the technical accuracy of this program, it is assumed that the user is knowledgeable in the art of system sound estimation and is aware of the tolerances involved in real world acoustical estimation. This program makes certain assumptions as to the dominant sound sources and sound paths which may not always be appropriate to the real system being estimated. Because of this, no assurances can be offered that this software will always generate an accurate sound prediction from user supplied input data. If in doubt about the estimation of expected sound levels in a space, an Acoustical Engineer or a person with sound prediction expertise should be consulted.



Unit Report For RTU-2 r1

Project: Ashley Homestore R1
 Prepared By:

12/11/2024
 05:36PM

Unit Parameters

Unit Model: **50FE-M28A2N6-8F3A0**
 Unit Size: **28 (25.0 Tons)**
 Volts-Phase-Hertz: **460-3-60**
 Heating Type: **Electric**
 Refrigerant: **R-454B**
 Heat Control: **Two-Stage Cooling, Single Circuit**
 Duct Cfg: **Vertical Supply / Vertical Return**

Dimensions (ft. in.) & Weight (lb.) ***

Unit Length: **11' 9.5"**
 Unit Width: **7' 2.375"**
 Unit Height: **3' 11.75"**
Total Operating Weight: 2313 lb

*** Weights and Dimensions are approximate. Weight does not include unit packaging. Approximate dimensions are provided primarily for shipping purposes. For exact dimensions and weights, refer to appropriate product data catalog.

Lines and Filters

Condensate Drain Line Size: **3/4**
 Return Air Filter Type: **Throwaway**
 Return Air Filter Quantity: **9**
 Return Air Filter Size: **16 x 25 x 2**

Selection includes construction throwaway filter into the base fan curve.

Unit Configuration

Std / Med Static - **EcoBlue** Vane Axial, Vertical Supply
 Pre-Coat Al/Cu - Al/Cu Louvered Hail Guards
 Electromechanical Controls with POL224 EconomizerONE (includes FDD)
 Standard Leak Enthalpy Economizer with Barometric Relief
 Hinged Access Panels
 Standard Packaging

Warranty Information

5-Year compressor parts (STD.)
 5-Year electric heater (STD.)
 1-Year parts (STD.)

No optional warranties were selected.

NOTE: Please see Warranty Catalog 500-089 for explanation of policies and ordering methods.

Ordering Information

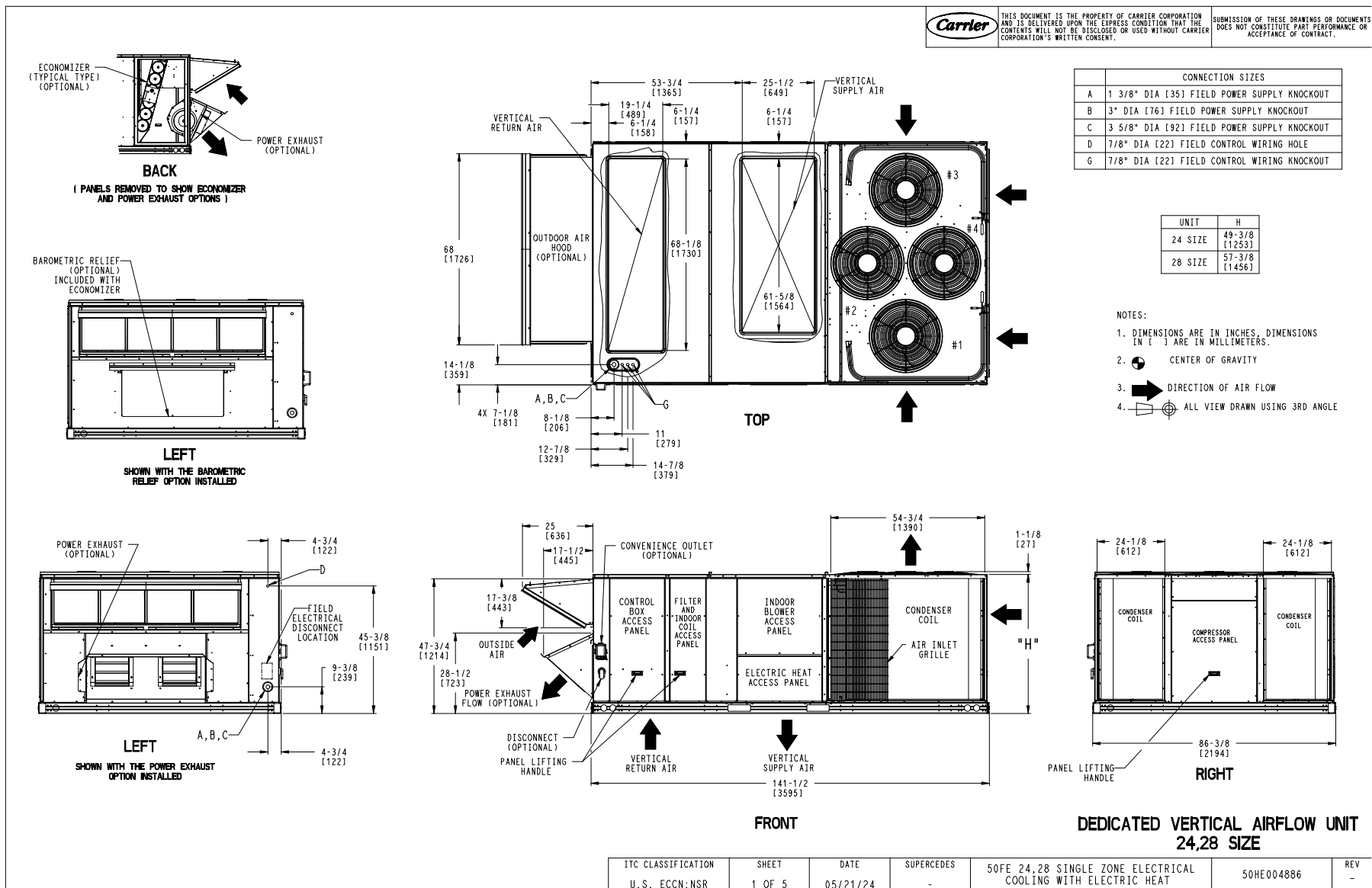
Part Number	Description	Quantity
50FE-M28A2N6-8F3A0	Rooftop Unit	1
	Base Unit	
	Pre-Coat Al/Cu - Al/Cu Louvered Hail Guards	
	Hinged Access Panels	
	Electromechanical control, Low Leak EconomizerONE, enthalpy economizer, barometric relief and POL224	
Field Installed Accessories		
33CONNECTSTAT43FX	Carrier Connect™ Wi-Fi® 7-day programmable/non-prog	1
CRHEATER458A00	Electric Heater	1
CRSINGLE057A00	Single Point Kit	1

Certified Drawing for RTU-2 r1

Project: Ashley Homestore R1
Prepared By:

12/11/2024
05:36PM

Carrier THIS DOCUMENT IS THE PROPERTY OF CARRIER CORPORATION AND IS DELIVERED UPON THE EXPRESS CONDITION THAT THE CONTENTS WILL NOT BE DISCLOSED OR USED WITHOUT CARRIER CORPORATION'S WRITTEN CONSENT. SUBMISSION OF THESE DRAWINGS OR DOCUMENTS DOES NOT CONSTITUTE PART PERFORMANCE OR ACCEPTANCE OF CONTRACT.



Certified Drawing for RTU-2 r1

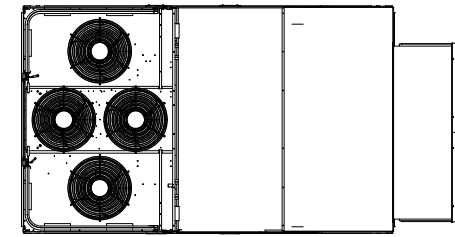
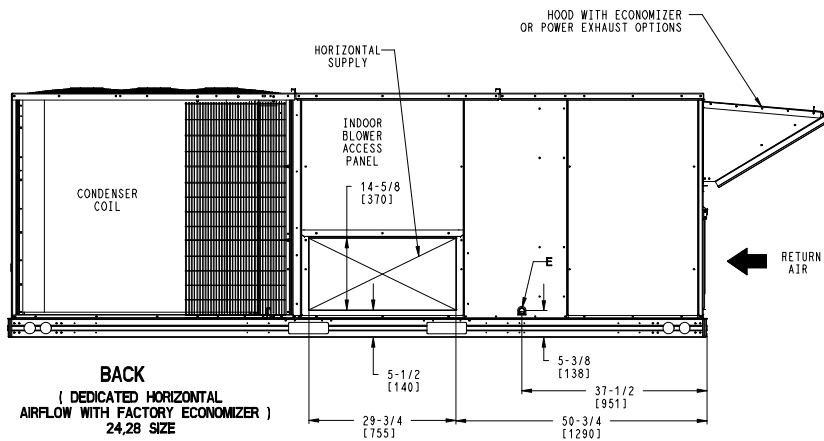
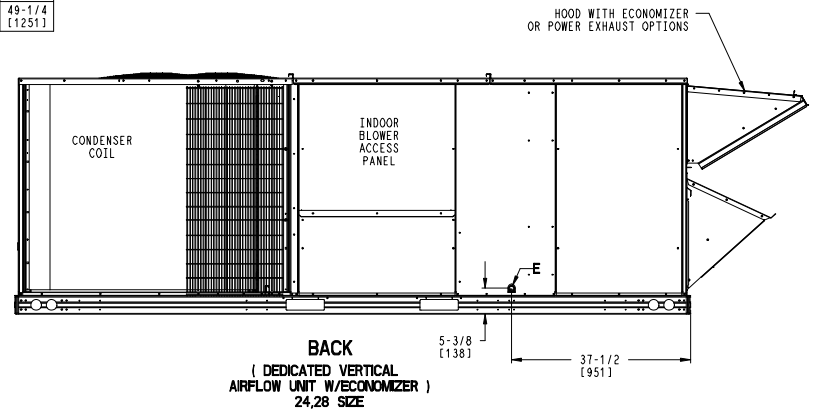
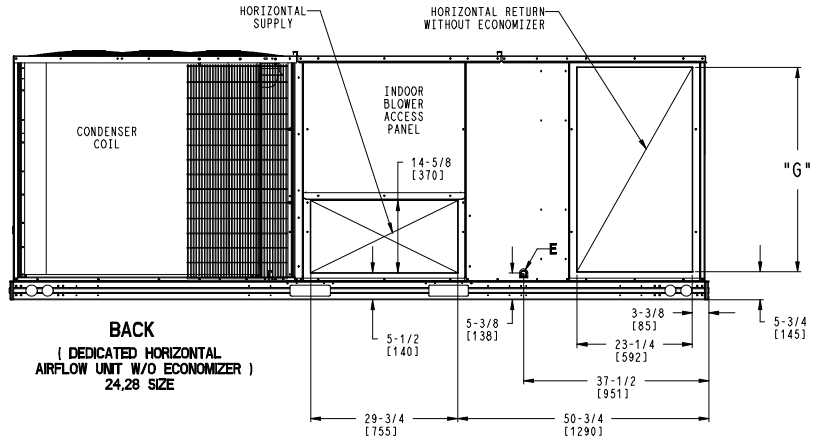
Project: Ashley Homestore R1
Prepared By:

12/11/2024
05:36PM

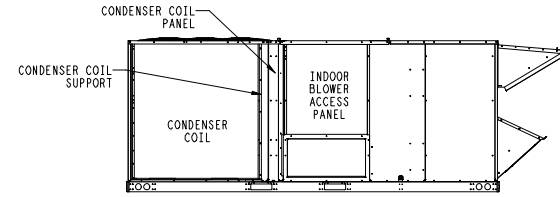
CONNECTION SIZES	
E	3/4"-14 NPT CONDENSATE DRAIN

THIS DOCUMENT IS THE PROPERTY OF CARRIER CORPORATION AND IS DELIVERED UPON THE EXPRESS CONDITION THAT THE CONTENTS WILL NOT BE DISCLOSED OR USED WITHOUT CARRIER CORPORATION'S WRITTEN CONSENT. SUBMISSION OF THESE DRAWINGS OR DOCUMENTS DOES NOT CONSTITUTE PART PERFORMANCE OR ACCEPTANCE OF CONTRACT.

UNIT	G
24 SIZE	41-3/8 [1049]
28 SIZE	49-1/4 [1251]



28 SIZE CONDENSER COIL TOP VIEW



28 SIZE CONDENSER COIL END BRACKET SUPPORT

ITC CLASSIFICATION	SHEET	DATE	SUPERCEDES	50FE 24,28 SINGLE ZONE ELECTRICAL COOLING WITH ELECTRIC HEAT	50HE004886	REV
U. S. ECCN: NSR	3 OF 5	05/21/24	-			-

Certified Drawing for RTU-2 r1

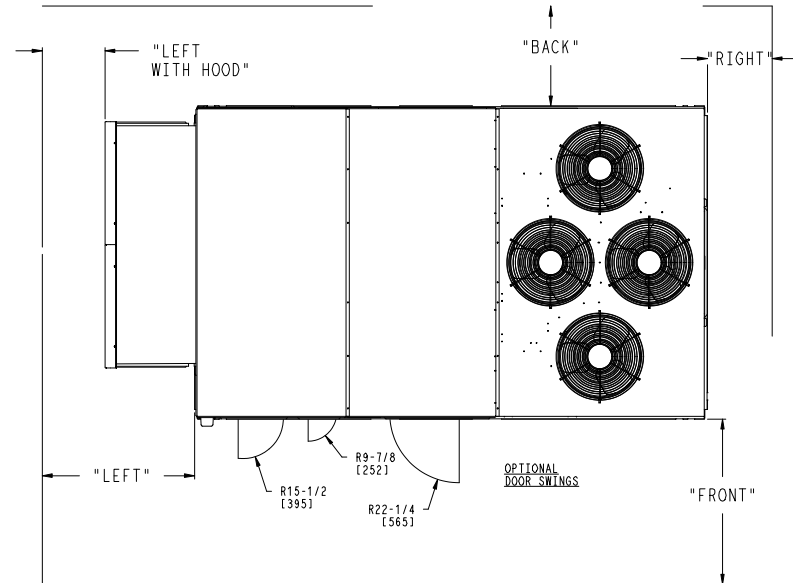
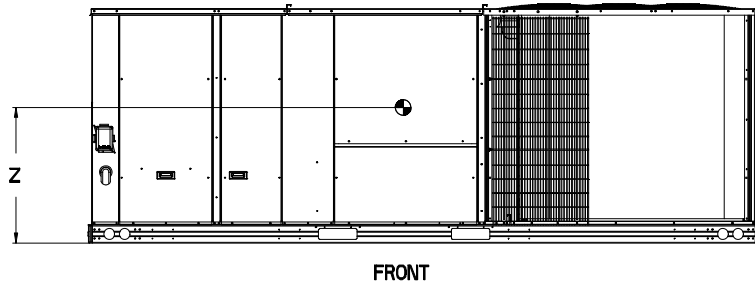
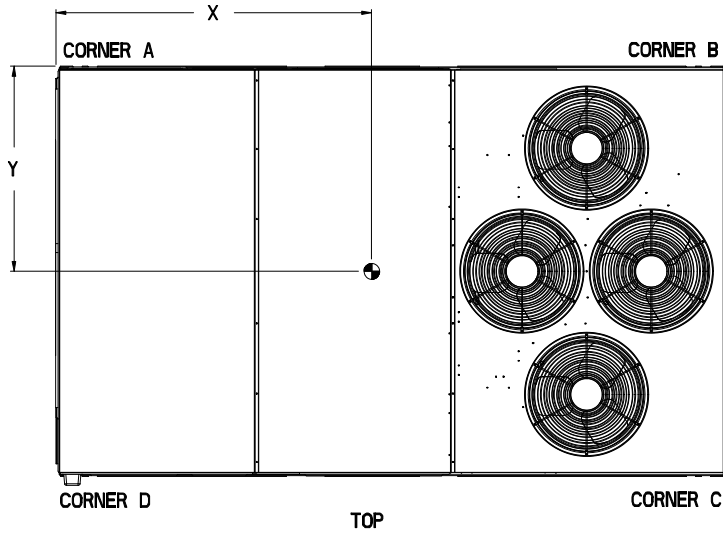
Project: Ashley Homestore R1
Prepared By:

12/11/2024
05:36PM

UNIT	STD. UNIT WEIGHT *		CORNER WEIGHT (A)		CORNER WEIGHT (B)		CORNER WEIGHT (C)		CORNER WEIGHT (D)		C.G.		
	LBS.	KG.	LBS.	KG.	LBS.	KG.	LBS.	KG.	LBS.	KG.	X	Y	Z
50FE 24	1873	850	402	182	473	215	539	244	458	208	76 1/2 [1943]	46 [1168]	16 1/2 [419]
50FE 28	2047	929	431	195	549	249	597	271	469	213	79 1/4 [2013]	45 [1143]	19 [483]

Carrier THIS DOCUMENT IS THE PROPERTY OF CARRIER CORPORATION AND IS DELIVERED UPON THE EXPRESS CONDITION THAT THE CONTENTS WILL NOT BE DISCLOSED OR USED WITHOUT CARRIER CORPORATION'S WRITTEN CONSENT. SUBMISSION OF THESE DRAWINGS OR DOCUMENTS DOES NOT CONSTITUTE PART PERFORMANCE OR ACCEPTANCE OF CONTRACT.

* STANDARD UNIT WEIGHT IS WITHOUT ELECTRIC HEAT AND WITHOUT PACKAGING. FOR OTHER OPTIONS AND ACCESSORIES, REFER TO THE PRODUCT DATA CATALOG.



NOTES:

- CLEARANCE ABOVE THE UNIT TO BE 72"
- FOR ALL MINIMUM CLEARANCES LOCAL CODES OR JURISDICTIONS MAY PREVAIL.


SURFACE	CLEARANCE		OPERATING CLEARANCE
	SERVICE WITH CONDUCTIVE BARRIER	SERVICE WITH NONCONDUCTIVE BARRIER	
FRONT	48 [1219mm]	36 [914mm]	18 [457mm]
LEFT	48 [1219mm]	42 [1067mm]	18 [457mm]
BACK	42 [1067mm]	36 [914mm]	18 [457mm]
LEFT WITH HOOD	36 [914mm]	36 [914mm]	18 [457mm]
RIGHT	36 [914mm]	36 [914mm]	18 [457mm]
TOP	72 [1829mm]	72 [1829mm]	72 [1829mm]

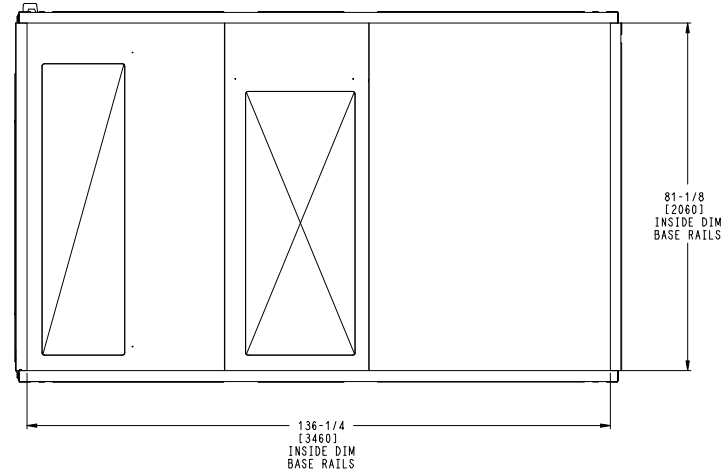
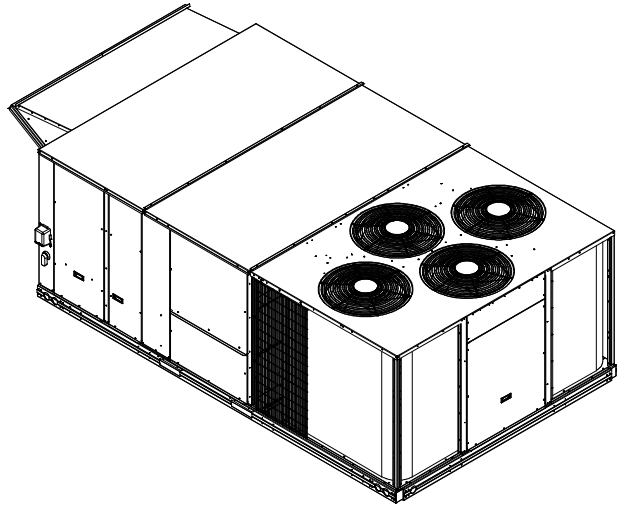
ITC CLASSIFICATION	SHEET	DATE	SUPERCEDES	50FE 24,28 SINGLE ZONE ELECTRICAL COOLING WITH ELECTRIC HEAT	50HE004886	REV
U.S. ECCN:NSR	4 OF 5	05/21/24	-			-

Certified Drawing for RTU-2 r1

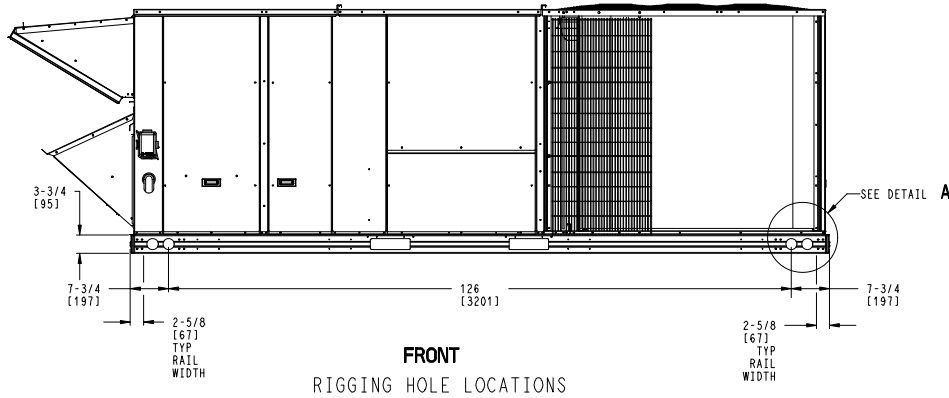
Project: Ashley Homestore R1
Prepared By:

12/11/2024
05:36PM

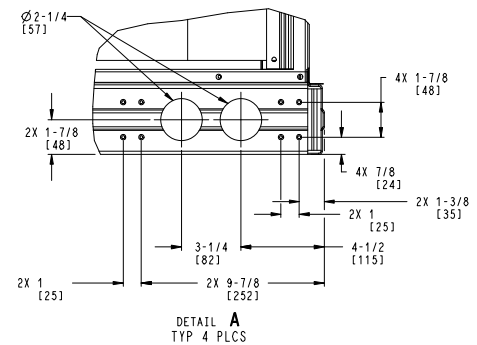
	THIS DOCUMENT IS THE PROPERTY OF CARRIER CORPORATION AND IS DELIVERED UPON THE EXPRESS CONDITION THAT THE CONTENTS WILL NOT BE DISCLOSED OR USED WITHOUT CARRIER CORPORATION'S WRITTEN CONSENT.	SUBMISSION OF THESE DRAWINGS OR DOCUMENTS DOES NOT CONSTITUTE PART PERFORMANCE OR ACCEPTANCE OF CONTRACT.
---	---	---



BOTTOM
INSIDE BASERAIL DIMENSIONS



FRONT
RIGGING HOLE LOCATIONS



DETAIL A
TYP 4 PLCS

ITC CLASSIFICATION	SHEET	DATE	SUPERCEDES	50FE 24,28 SINGLE ZONE ELECTRICAL COOLING WITH ELECTRIC HEAT	50HE004886	REV
U. S. ECCN: NSR	5 OF 5	05/21/24	-			-

Performance Summary For RTU-2 r1

Project: Ashley Homestore R1
Prepared By:

12/11/2024
05:36PM

Part Number: 50FE-M28A2N6-8F3A0

Refrigerant: R-454B
ARI EER: 10.00
IEER: 14.2

Base Unit Dimensions

Unit Length: 141.5 in
Unit Width: 86.4 in
Unit Height: 47.8 in

Operating Weight

Base Unit Weight: 2047 lb
Standard Leak Enthalpy Economizer with Barometric Relief: 246 lb
Hinged Access Panels: 5 lb

Accessories

Single Point Kit: 15 lb

Total Operating Weight: 2313 lb

Unit

Unit Voltage-Phase-Hertz: 460-3-60
Air Discharge: Vertical
Fan Drive Type: Vane Axial
Actual Airflow: 10000 CFM
Site Altitude: 0 ft

Cooling Performance

Condenser Entering Air DB: 95.0 F
Evaporator Entering Air DB: 80.0 F
Evaporator Entering Air WB: 67.0 F
Entering Air Enthalpy: 31.44 BTU/lb
Evaporator Leaving Air DB: 58.8 F
Evaporator Leaving Air WB: 57.6 F
Evaporator Leaving Air Enthalpy: 24.77 BTU/lb
Gross Cooling Capacity: 300.08 MBH
Gross Sensible Capacity: 228.51 MBH
Compressor Power Input: 24.85 kW
Coil Bypass Factor: 0.078

Heating Performance

Heating Airflow: 10000 CFM
Entering Air Temp: 70.0 F
Leaving Air Temp: 84.5 F
Electric Heating Capacity: 45.90 kW

Supply Fan

External Static Pressure: 0.80 in wg
Options / Accessories Static Pressure
Electric Heaters: 0.13 in wg
Economizer: 0.10 in wg
Application External Static (ESP + Unit Opts/Acc.): 1.03 in wg
Fan RPM: 1796
Fan Power: 5.57 BHP
NOTE: Selected IFM RPM Range: 1105 - 2200

Selection includes construction throwaway filter into the base fan curve. This filter is not MERV Rated.

Electrical Data

Voltage Range: 414 - 506
Compressor #1 RLA: 21.6

Performance Summary For RTU-2 r1

Project: Ashley Homestore R1
Prepared By:

12/11/2024
05:36PM

Compressor #1 LRA:	147
Compressor #2 RLA:	21.6
Compressor #2 LRA:	147
Actual Electric Heater kW:	45.9
Electric Heater FLA:	60.1
Indoor Fan Motor Type:	MED
Indoor Fan Motor FLA (Total):	3.5
Power Supply MCA:	69
Power Supply MOCP (Fuse or HACR):	80
Disconnect Size FLA:	77
Disconnect Size LRA:	312
Electrical Convenience Outlet:	None
Outdoor Fan [Qty / FLA (ea)]:	4 / 0.9
Electric Heater Part Number:	CRHEATER458A00
Electric Heater Number of Stages:	2

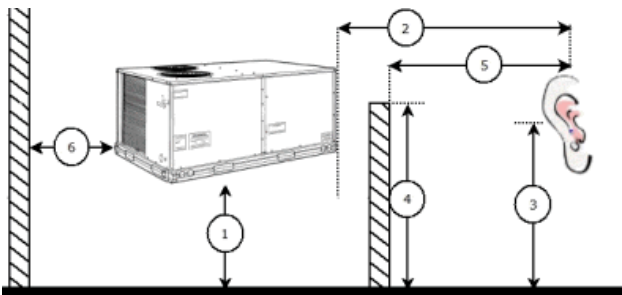
Control Panel SCCR: 5kA RMS at Rated Symmetrical Voltage

Acoustics

Sound Power Levels, db re 10E-12 Watts

	Discharge	Inlet	Outdoor
63 Hz	94.6	80.9	97.1
125 Hz	93.3	78.4	88.3
250 Hz	89.8	73.6	84.4
500 Hz	88.5	71.4	83.3
1000 Hz	84.2	71.0	80.7
2000 Hz	81.8	64.9	77.4
4000 Hz	77.4	56.0	73.4
8000 Hz	68.3	47.5	67.3
A-Weighted	90.3	74.6	85.9

Advanced Acoustics



Advanced Acoustics Parameters

1. Unit height above ground:	30.0 ft
2. Horizontal distance from unit to receiver:	50.0 ft
3. Receiver height above ground:	5.7 ft
4. Height of obstruction:	0.0 ft
5. Horizontal distance from obstruction to receiver:	0.0 ft
6. Horizontal distance from unit to obstruction:	0.0 ft

Detailed Acoustics Information

Performance Summary For RTU-2 r1

Project: Ashley Homestore R1
Prepared By:

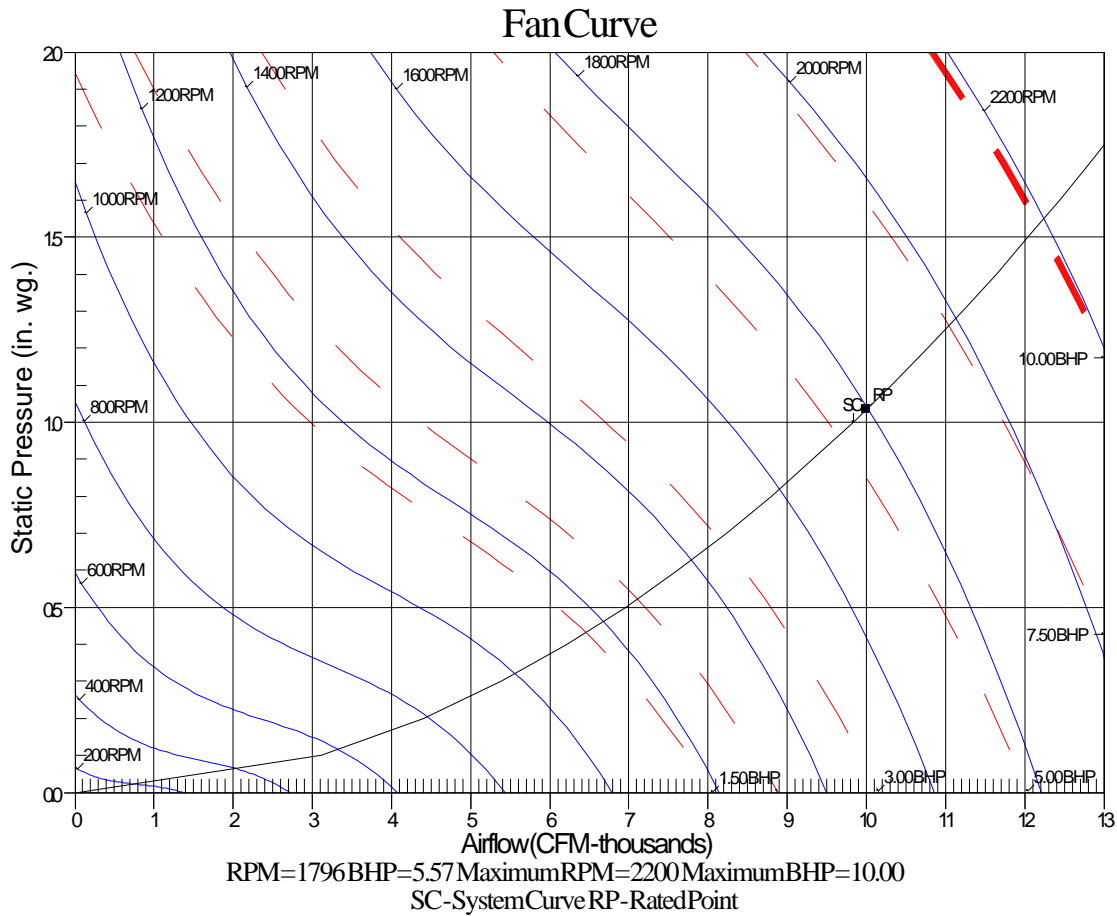
12/11/2024
05:36PM

Octave Band Center Freq. Hz	63	125	250	500	1k	2k	4k	8k	Overall
A	97.1	88.3	84.4	83.3	80.7	77.4	73.4	67.3	98.1 Lw
B	70.9	72.2	75.8	80.1	80.7	78.6	74.4	66.2	85.9 LwA
C	64.7	55.9	52.0	50.9	48.3	45.0	41.0	34.9	65.7 Lp
D	38.5	39.8	43.4	47.7	48.3	46.2	42.0	33.8	53.5 LpA

Legend

- A Sound Power Levels at Unit's Acoustic Center, Lw
- B A-Weighted Sound Power Levels at Unit's Acoustic Center, LwA
- C Sound Pressure Levels at Specific Distance from Unit, Lp
- D A-Weighted Sound Pressure Levels at Specific Distance from Unit, LpA

Calculation methods used in this program are patterned after the ASHRAE Guide; other ASHRAE Publications and the AHRI Acoustical Standards. While a very significant effort has been made to insure the technical accuracy of this program, it is assumed that the user is knowledgeable in the art of system sound estimation and is aware of the tolerances involved in real world acoustical estimation. This program makes certain assumptions as to the dominant sound sources and sound paths which may not always be appropriate to the real system being estimated. Because of this, no assurances can be offered that this software will always generate an accurate sound prediction from user supplied input data. If in doubt about the estimation of expected sound levels in a space, an Acoustical Engineer or a person with sound prediction expertise should be consulted.



Unit Report For **RTU-3**r1

Project: Ashley Homestore R1
Prepared By:

12/11/2024
05:36PM

Unit Parameters

Unit Model: **50FE-M16A2N6-8F3A0**
 Unit Size: **16 (15 Tons)**
 Volts-Phase-Hertz: **460-3-60**
 Heating Type: **Electric**
 Refrigerant: **R-454B**
 Heat Control: **Two Stage Cooling, Single Circuit**
 Duct Cfg: **Vertical Supply / Vertical Return**

Dimensions (ft. in.) & Weight (lb.) ***

Unit Length: **9' 7.875"**
 Unit Width: **5' 3.375"**
 Unit Height: **4' 9.375"**
Total Operating Weight: 1396 lb

*** Weights and Dimensions are approximate. Weight does not include unit packaging. Approximate dimensions are provided primarily for shipping purposes. For exact dimensions and weights, refer to appropriate product data catalog.

Lines and **Filters**

Condensate Drain Line Size: **3/4**
 Return Air Filter Type: **Throwaway**
 Return Air Filter Quantity: **6**
 Return Air Filter Size: **18 x 24 x 2**

Selection includes construction throwaway filter into the base fan curve.

Unit Configuration

Standard/Medium Static - **EcoBlue** Vane Axial Fan
 Precoat Al/Cu - Al/Cu - Louvered Hail Guards
 Electro-mechanical Controls with POL224
 Standard Leak Enthalpy Economizer with Barometric Relief
 Hinged Access Panels
 Standard Packaging

Warranty Information

5-Year compressor parts (STD.)
 5-Year electric heater (STD.)
 1-Year parts (STD.)

No optional warranties were selected.

NOTE: Please see Warranty Catalog 500-089 for explanation of policies and ordering methods.

Ordering Information

Part Number	Description	Quantity
50FE-M16A2N6-8F3A0	Rooftop Unit	1
	Base Unit	
	Precoat Al/Cu - Al/Cu - Louvered Hail Guards	
	Hinged Access Panels	
	Low Leak Enty EconomizerONE with barometric relief	
Field Installed Accessories		
CRHEATER421A00	Electric Heater	1
CRSINGLE047A00	Single Point Kit	1
33CONNECTSTAT43FX	Carrier Connect™ Wi-Fi® 7-day programmable/non-prog	1

Certified Drawing for RTU-3 r1

Project: Ashley Homestore R1
Prepared By:

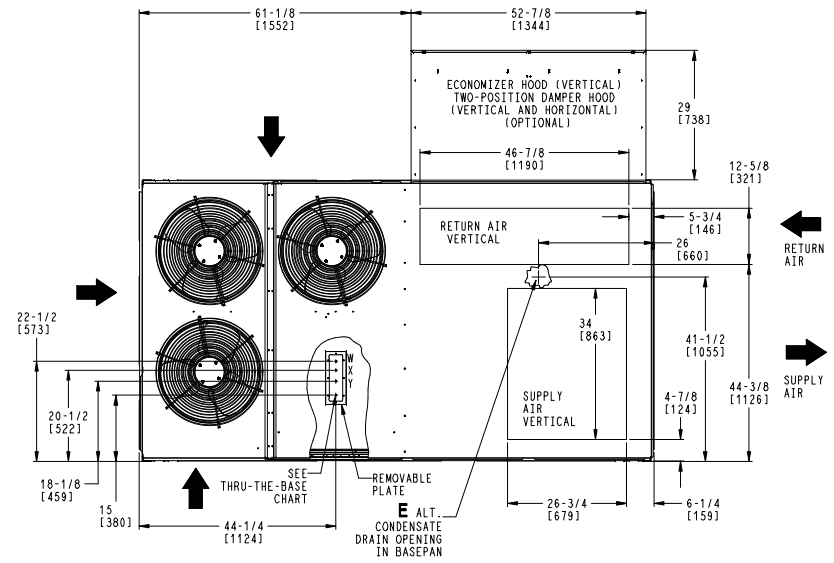
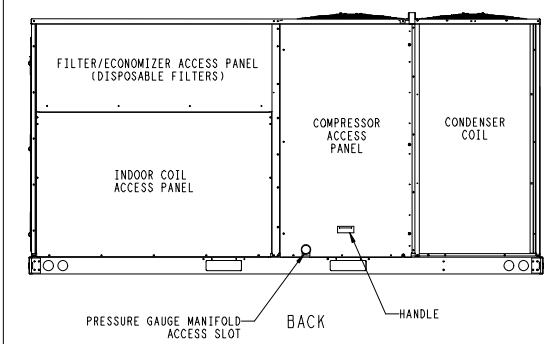
12/11/2024
05:36PM

NOTES:

1. DIMENSIONS ARE IN INCHES, DIMENSIONS IN [] ARE IN MILLIMETERS.
2. CENTER OF GRAVITY
3. DIRECTION OF AIR FLOW

THIS DOCUMENT IS THE PROPERTY OF CARRIER CORPORATION AND IS DELIVERED UPON THE EXPRESS CONDITION THAT THE CONTENTS WILL NOT BE DISCLOSED OR USED WITHOUT CARRIER CORPORATION'S WRITTEN CONSENT.

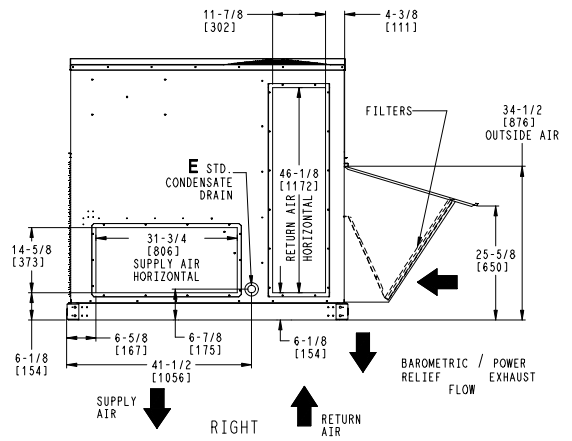
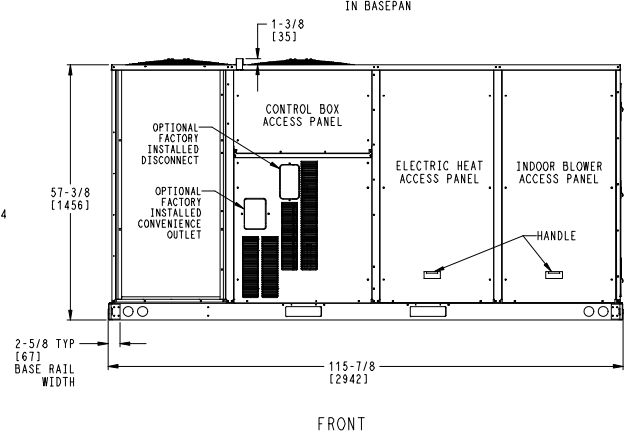
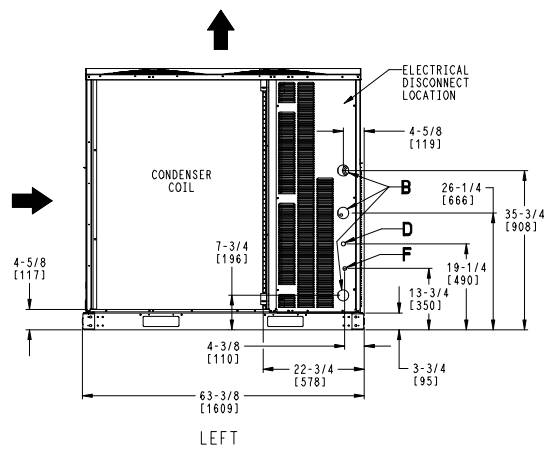
SUBMISSION OF THESE DRAWINGS OR DOCUMENTS DOES NOT CONSTITUTE PART PERFORMANCE OR ACCEPTANCE OF CONTRACT.



CONNECTION SIZES	
B	2 1/2" [64] DIA POWER SUPPLY HOLE
D	7/8" [22] DIA FIELD CONTROL WIRING HOLE
E	3/4"-14 NPT CONDENSATE DRAIN
F	7/8" [22] DIA FIELD CONVENIENCE OUTLET HOLE

THRU-THE-BASE CHART THESE HOLES REQUIRED FOR USE CRBTMPWR005A00, 006A00, 007A00			
ACCESSORY NO.	THREADED CONDUIT SIZE	WIRE USE	REQ'D HOLE SIZES (MAX.)
005	W 1/2"	ACC.	7/8" [22.2]
	X 1/2"	24V	7/8" [22.2]
	Y 1 1/4"	POWER	1 1/2" [38.1]
006	W 1/2"	ACC.	7/8" [22.2]
	X 1/2"	24V	7/8" [22.2]
	Y 1 1/2"	POWER	2" [50.8]
007	W 1/2"	ACC.	7/8" [22.2]
	X 1/2"	24V	7/8" [22.2]
	Y 2"	POWER	2 1/2" [63.5]

FOR "THRU-THE-BASE" FACTORY OPTION, FITTINGS FOR X & Y ARE PROVIDED AS SPECIFIED ON "006".



ITC CLASSIFICATION U.S. ECCN: NSR	SHEET 1 OF 2	DATE 8/10/23	SUPERCEDES -	50FE 16 SINGLE ZONE ELECTRICAL COOLING WITH ELECTRIC HEAT	50TM003165	REV -
--------------------------------------	-----------------	-----------------	-----------------	---	------------	----------

Certified Drawing for RTU-3 r1

Project: Ashley Homestore R1
Prepared By:

12/11/2024
05:36PM

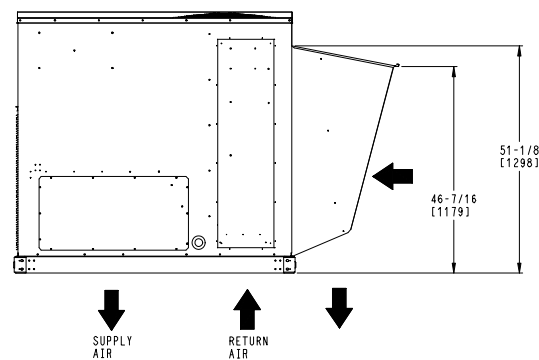
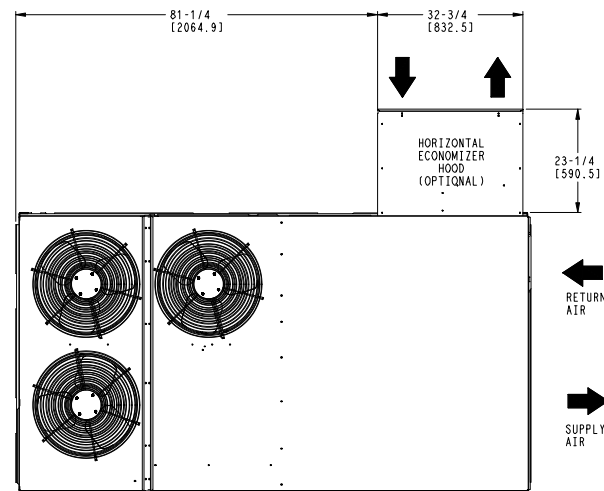
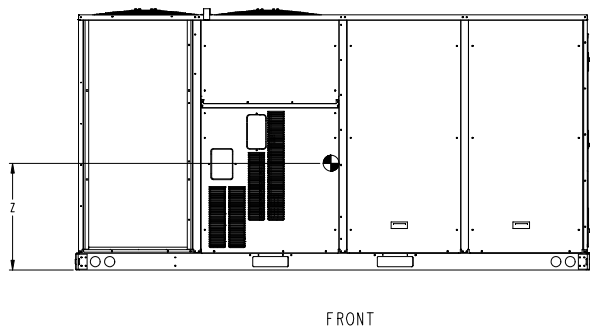
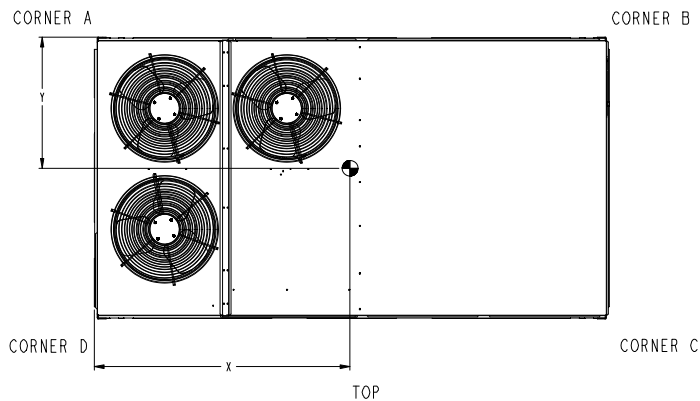
UNIT	STD UNIT WEIGHT		CORNER WEIGHT (A)		CORNER WEIGHT (B)		CORNER WEIGHT (C)		CORNER WEIGHT (D)		C.G.		
	LBS.	KG.	LBS.	KG.	LBS.	KG.	LBS.	KG.	LBS.	KG.	X	Y	Z
50FE-M16	1325	601	370	168	312	142	294	133	349	158	53 (1345)	30 3/4 (781)	22 (559)

STANDARD UNIT WEIGHT IS WITHOUT ELECTRIC HEAT & WITHOUT PACKAGING.
FOR OPTIONS & ACCESSORIES, REFER TO THE PRODUCT DATA CATALOG.

Carrier

THIS DOCUMENT IS THE PROPERTY OF CARRIER CORPORATION AND IS DELIVERED UPON THE EXPRESS CONDITION THAT THE CONTENTS WILL NOT BE DISCLOSED OR USED WITHOUT CARRIER CORPORATION'S WRITTEN CONSENT.

SUBMISSION OF THESE DRAWINGS OR DOCUMENTS DOES NOT CONSTITUTE PART PERFORMANCE OR ACCEPTANCE OF CONTRACT.



HORIZONTAL ECONOMIZER

ITC CLASSIFICATION	SHEET	DATE	SUPERCEDES	50FE 16 SINGLE ZONE ELECTRICAL COOLING WITH ELECTRIC HEAT	50TM003165	REV
U.S. ECCN:NSR	2 OF 2	8/10/23	-			-

Performance Summary For RTU-3 r1

Project: Ashley Homestore R1
Prepared By:

12/11/2024
05:36PM

Part Number: 50FE-M16A2N6-8F3A0

Refrigerant: R-454B
ARI EER: 11.00
IEER: 14.7

Base Unit Dimensions

Unit Length: 115.9 in
Unit Width: 63.4 in
Unit Height: 57.4 in

Operating Weight

Base Unit Weight: 1325 lb
Precoat Al/Cu - Al/Cu - Louvered Hail Guards: 17 lb
Standard Leak Enthalpy Economizer with Barometric Relief: 37 lb
Hinged Access Panels: 5 lb

Accessories

Single Point Kit: 12 lb

Total Operating Weight: 1396 lb

Unit

Unit Voltage-Phase-Hertz: 460-3-60
Air Discharge: Vertical
Fan Drive Type: Vane Axial
Actual Airflow: 6000 CFM
Site Altitude: 0 ft

Cooling Performance

Condenser Entering Air DB: 95.0 F
Evaporator Entering Air DB: 80.0 F
Evaporator Entering Air WB: 67.0 F
Entering Air Enthalpy: 31.44 BTU/lb
Evaporator Leaving Air DB: 59.5 F
Evaporator Leaving Air WB: 57.3 F
Evaporator Leaving Air Enthalpy: 24.58 BTU/lb
Gross Cooling Capacity: 185.08 MBH
Gross Sensible Capacity: 133.09 MBH
Compressor Power Input: 13.55 kW
Coil Bypass Factor: 0.128

Heating Performance

Heating Airflow: 6000 CFM
Entering Air Temp: 70.0 F
Leaving Air Temp: 82.1 F
Electric Heating Capacity: 23.00 kW

Supply Fan

External Static Pressure: 0.80 in wg
Options / Accessories Static Pressure
Electric Heaters: 0.04 in wg
Economizer: 0.05 in wg
Application External Static (ESP + Unit Opts/Acc.): 0.89 in wg
Fan RPM: 1703
Fan Power: 2.42 BHP

NOTE: Selected IFM RPM Range: 1120 - 2200

Selection includes construction throwaway filter into the base fan curve. This filter is not MERV Rated.

Electrical Data

Voltage Range: 414 - 506

Performance Summary For RTU-3 r1

Project: Ashley Homestore R1
Prepared By:

12/11/2024
05:36PM

Compressor #1 RLA:.....	13.4
Compressor #1 LRA:.....	123
Compressor #2 RLA:.....	9.1
Compressor #2 LRA:.....	75
Actual Electric Heater kW:.....	23
Electric Heater FLA:.....	30.1
Indoor Fan Motor Type:.....	MED
Indoor Fan Motor FLA (Total):.....	3.5
Power Supply MCA:.....	42
Power Supply MOCP (Fuse or HACR):.....	45
Disconnect Size FLA:.....	39
Disconnect Size LRA:.....	211
Electrical Convenience Outlet:.....	None
Outdoor Fan [Qty / FLA (ea)]:.....	3 / 0.8
Electric Heater Part Number:.....	421A
Electric Heater Number of Stages:.....	2

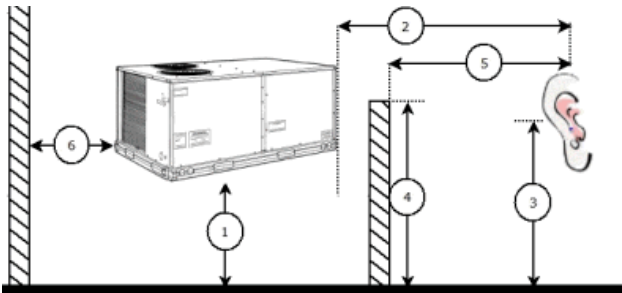
Control Panel SCCR: 5kA RMS at Rated Symmetrical Voltage

Acoustics

Sound Power Levels, db re 10E-12 Watts

	Discharge	Inlet	Outdoor
63 Hz	85.8	81.4	87.0
125 Hz	82.6	76.5	85.2
250 Hz	80.1	72.1	84.6
500 Hz	78.2	70.0	84.9
1000 Hz	79.3	70.3	82.2
2000 Hz	74.8	63.5	78.4
4000 Hz	69.4	54.4	75.3
8000 Hz	61.4	48.3	72.9
A-Weighted	82.7	73.5	87.0

Advanced Acoustics



Advanced Acoustics Parameters

1. Unit height above ground:.....	30.0 ft
2. Horizontal distance from unit to receiver:.....	50.0 ft
3. Receiver height above ground:.....	5.7 ft
4. Height of obstruction:.....	0.0 ft
5. Horizontal distance from obstruction to receiver:.....	0.0 ft
6. Horizontal distance from unit to obstruction:.....	0.0 ft

Detailed Acoustics Information

Performance Summary For RTU-3 r1

Project: Ashley Homestore R1
 Prepared By:

12/11/2024
 05:36PM

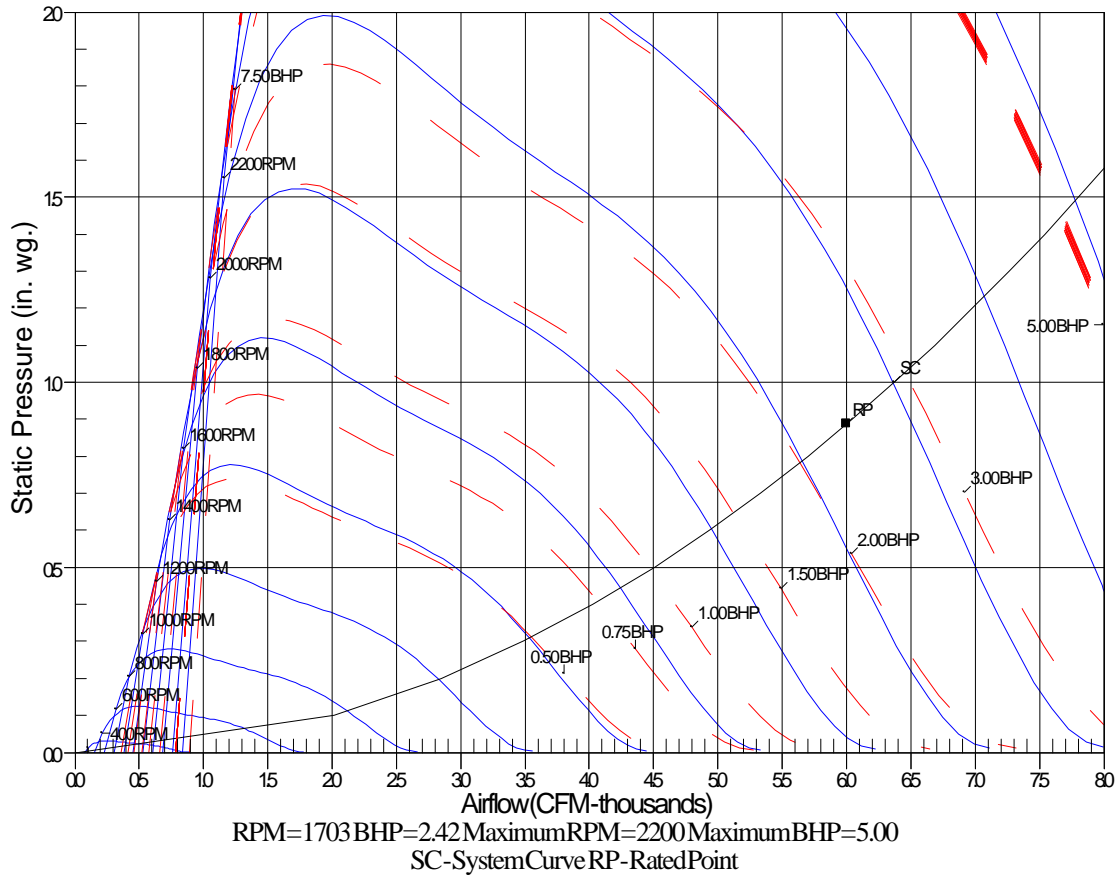
Octave Band Center Freq. Hz	63	125	250	500	1k	2k	4k	8k	Overall
A	87.0	85.2	84.6	84.9	82.2	78.4	75.3	72.9	92.4 Lw
B	60.8	69.1	76.0	81.7	82.2	79.6	76.3	71.8	87.1 LwA
C	54.6	52.8	52.2	52.5	49.8	46.0	42.9	40.5	60.0 Lp
D	28.4	36.7	43.6	49.3	49.8	47.2	43.9	39.4	54.7 LpA

Legend

- A Sound Power Levels at Unit's Acoustic Center, Lw
- B A-Weighted Sound Power Levels at Unit's Acoustic Center, LwA
- C Sound Pressure Levels at Specific Distance from Unit, Lp
- D A-Weighted Sound Pressure Levels at Specific Distance from Unit, LpA

Calculation methods used in this program are patterned after the ASHRAE Guide; other ASHRAE Publications and the AHRI Acoustical Standards. While a very significant effort has been made to insure the technical accuracy of this program, it is assumed that the user is knowledgeable in the art of system sound estimation and is aware of the tolerances involved in real world acoustical estimation. This program makes certain assumptions as to the dominant sound sources and sound paths which may not always be appropriate to the real system being estimated. Because of this, no assurances can be offered that this software will always generate an accurate sound prediction from user supplied input data. If in doubt about the estimation of expected sound levels in a space, an Acoustical Engineer or a person with sound prediction expertise should be consulted.

Fan Curve



Unit Report For **RTU-4 r1**

Project: Ashley Homestore R1
Prepared By:

12/11/2024
05:36PM

Unit Parameters

Unit Model: **50FE-M14A3N6-8F3A0**
 Unit Size: **14 (12.5 Tons)**
 Volts-Phase-Hertz: **460-3-60**
 Heating Type: **Electric**
 Refrigerant: **R-454B**
 Heat Control: **Two Stage Cooling, Single Circuit**
 Duct Cfg: **Vertical Supply / Vertical Return**

Dimensions (ft. in.) & Weight (lb.) ***

Unit Length: **7' 4.125"**
 Unit Width: **4' 11.5"**
 Unit Height: **4' 1.375"**
Total Operating Weight: 1062 lb

*** Weights and Dimensions are approximate. Weight does not include unit packaging. Approximate dimensions are provided primarily for shipping purposes. For exact dimensions and weights, refer to appropriate product data catalog.

Lines and Filters

Condensate Drain Line Size: **3/4**
 Return Air Filter Type: **Throwaway**
 Return Air Filter Quantity: **4**
 Return Air Filter Size: **20 x 20 x 2**

Selection includes construction throwaway filter into the base fan curve.

Unit Configuration

High Static - EcoBlue Vane Axial Fan
 Precoat Al/Cu - Al/Cu - Louvered Hail Guards
 Electro-mechanical Controls with POL224
 Standard Leak Enthalpy Economizer with Barometric Relief
 Hinged Access Panels
 Standard Packaging

Warranty Information

5-Year compressor parts (STD.)
 5-Year electric heater (STD.)
 1-Year parts (STD.)

No optional warranties were selected.

NOTE: Please see Warranty Catalog 500-089 for explanation of policies and ordering methods.

Ordering Information

Part Number	Description	Quantity
50FE-M14A3N6-8F3A0	Rooftop Unit	1
	Base Unit	
	High Static - EcoBlue Vane Axial Fan	
	Precoat Al/Cu - Al/Cu - Louvered Hail Guards	
	Hinged Access Panels	
	Low Leak Enty EconomizerONE with barometric relief	
Field Installed Accessories		
33CONNECTSTAT43FX	Carrier Connect™ Wi-Fi® 7-day programmable/non-prog	1
CRHEATER422A00	Electric Heater	1
CRSINGLE047A00	Single Point Kit	1

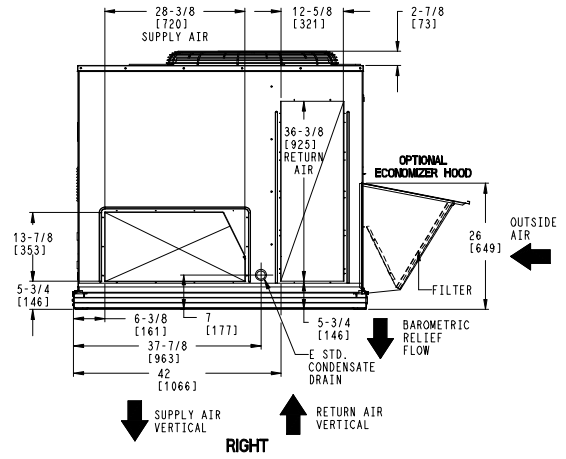
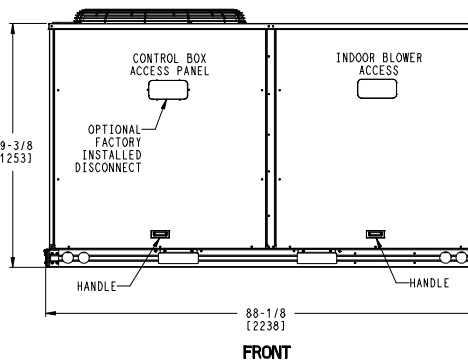
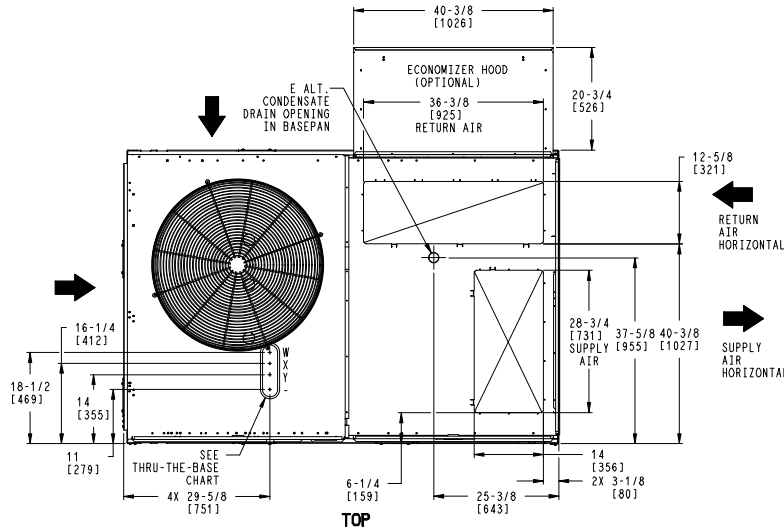
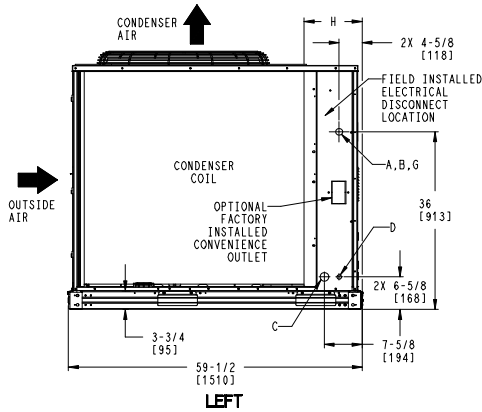
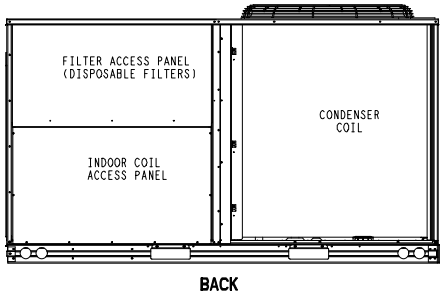
Certified Drawing for RTU-4 r1

Project: Ashley Homestore R1
Prepared By:

12/11/2024
05:36PM

- NOTES:
1. DIMENSIONS ARE IN INCHES. DIMENSIONS IN [] ARE IN MILLIMETERS.
 2. CENTER OF GRAVITY
 3. DIRECTION OF AIR FLOW
 4. ALL VIEW DRAWN USING 3RD ANGLE

UNIT	OUTDOOR COIL TYPE	H
50FE-M14	RTPF	15 7/8 [403]
RTPF - ROUND TUBE, PLATE FIN (COPPER/ALUM)		



Carrier THIS DOCUMENT IS THE PROPERTY OF CARRIER CORPORATION AND IS DELIVERED UPON THE EXPRESS CONDITION THAT THE CONTENTS WILL NOT BE DISCLOSED OR USED WITHOUT CARRIER CORPORATION'S WRITTEN CONSENT. SUBMISSION OF THESE DRAWINGS OR DOCUMENTS DOES NOT CONSTITUTE PART PERFORMANCE OR ACCEPTANCE OF CONTRACT.

CONNECTION SIZES	
A	1 3/8" [35] DIA FIELD POWER SUPPLY HOLE
B	2 1/2" [64] DIA POWER SUPPLY KNOCKOUT
C	1 3/4" [51] DIA GAUGE ACCESS PLUG
D	7/8" [22] DIA FIELD CONTROL WIRING HOLE
E	3/4"-14 NPT CONDENSATE DRAIN
G	2" [51] DIA POWER SUPPLY KNOCK-OUT

THRU-THE-BASE CHART THESE HOLES REQUIRED FOR USE CRBTMPWR002A01			
	THREADED CONDUIT SIZE	WIRE USE	REQ'D HOLE SIZES (MAX.)
W	1/2"	ACC.	7/8" [22.2]
X	1/2"	24V	7/8" [22.2]
Y	1 1/4" [002]	POWER	1 3/4" [44.4]

FOR "THRU-THE-BASEPAN" FACTORY OPTION, FITTINGS FOR ONLY X & Y ARE PROVIDED

ITC CLASSIFICATION	SHEET	DATE	SUPERCEDES	50FE-14 SINGLE ZONE ELECTRICAL COOLING WITH ELECTRIC HEAT	48TM009981	REV
U.S. ECCN:NSR	1 OF 3	08/02/24	-			-

Certified Drawing for RTU-4 r1

Project: Ashley Homestore R1
Prepared By:

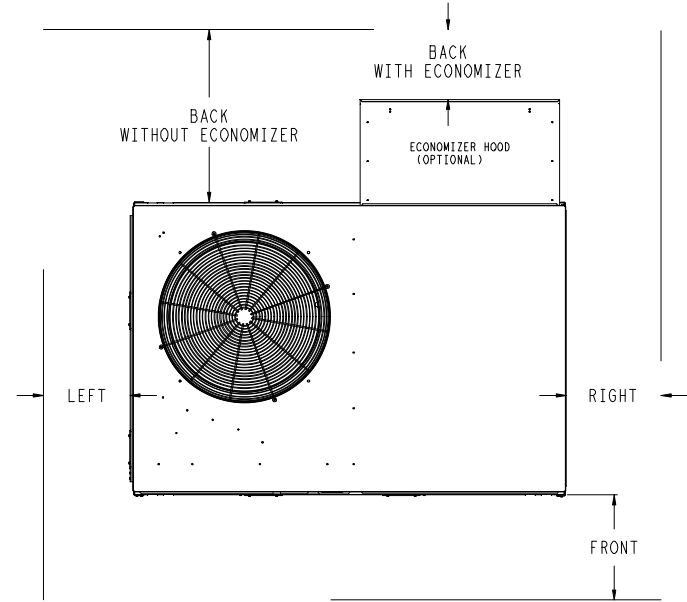
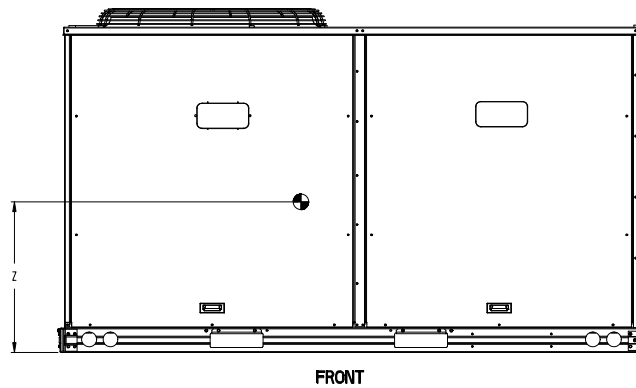
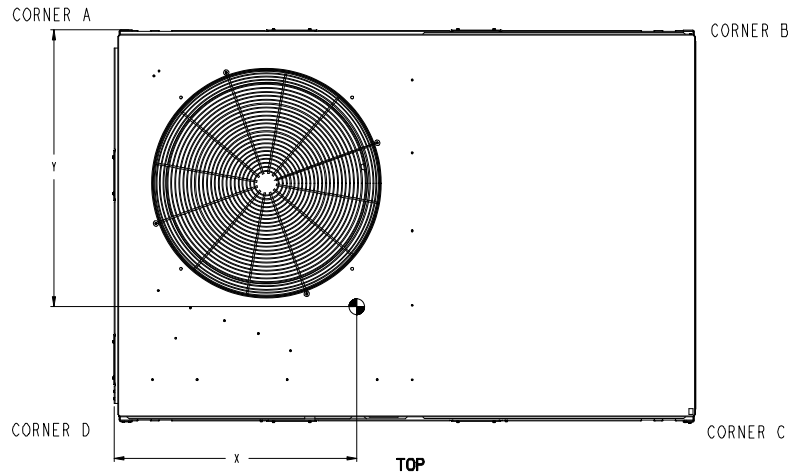
12/11/2024
05:36PM

UNIT	OUTDOOR COIL TYPE	STD. UNIT WEIGHT***		CORNER WEIGHT (A)		CORNER WEIGHT (B)		CORNER WEIGHT (C)		CORNER WEIGHT (D)		C.G.		
		LBS.	KG.	LBS.	KG.	LBS.	KG.	LBS.	KG.	LBS.	KG.	X	Y	Z
50FE-M14	RTPF	978	444	245	111	191	87	238	108	305	138	38 5/8 [981]	33 [838]	20 1/2 [521]

RTPF - ROUND TUBE, PLATE FIN (COPPER/ALUM)

*** STANDARD UNIT WEIGHT IS WITHOUT ELECTRIC HEAT AND WITHOUT PACKAGING. FOR OTHER OPTIONS AND ACCESSORIES, REFER TO THE PRODUCT DATA CATALOG.

THIS DOCUMENT IS THE PROPERTY OF CARRIER CORPORATION AND IS DELIVERED UPON THE EXPRESS CONDITION THAT THE CONTENTS WILL NOT BE DISCLOSED OR USED WITHOUT CARRIER CORPORATION'S WRITTEN CONSENT. SUBMISSION OF THESE DRAWINGS OR DOCUMENTS DOES NOT CONSTITUTE PART PERFORMANCE OR ACCEPTANCE OF CONTRACT.



NOTE:

1. FOR ALL MINIMUM CLEARANCES LOCAL CODES OR JURISDICTIONS MAY PREVAIL.

SURFACE	CLEARANCE		OPERATING CLEARANCE
	SERVICE WITH CONDUCTIVE BARRIER	SERVICE WITH NONCONDUCTIVE BARRIER	
FRONT	48 [1219mm]	36 [914mm]	18 [457mm]
LEFT	48 [1219mm]	42 [1067mm]	18 [457mm]
BACK W/O ECON	48 [1219mm]	42 [1067mm]	18 [457mm]
BACK W/ECON	36 [914mm]	36 [914mm]	18 [457mm]
RIGHT	36 [914mm]	36 [914mm]	18 [457mm]
TOP	72 [1829mm]	72 [1829mm]	72 [1829mm]

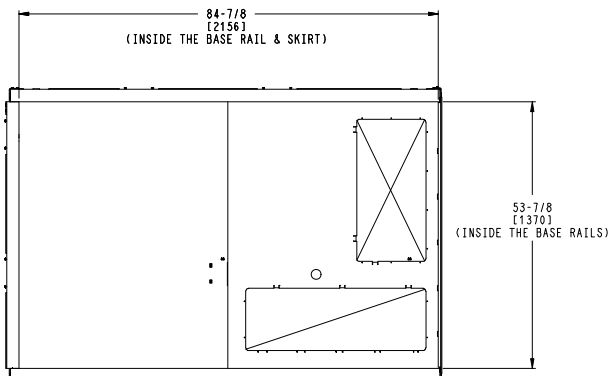
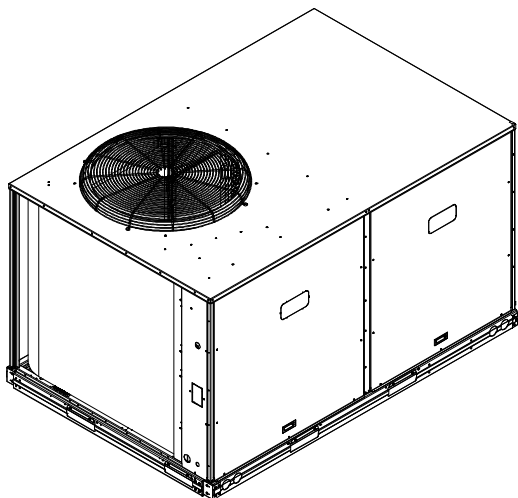
ITC CLASSIFICATION	SHEET	DATE	SUPERCEDES	50FE-14 SINGLE ZONE ELECTRICAL COOLING WITH ELECTRIC HEAT	48TM009981	REV
U. S. ECCN: NSR	2 OF 3	08/02/24	-			-

Certified Drawing for RTU-4 r1

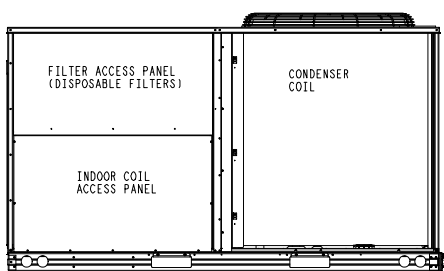
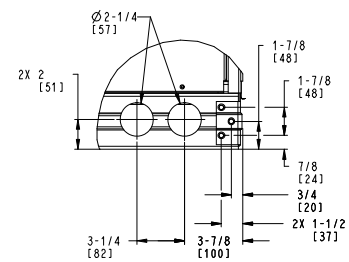
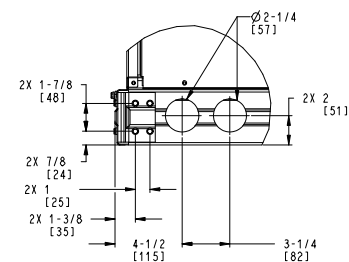
Project: Ashley Homestore R1
Prepared By:

12/11/2024
05:36PM

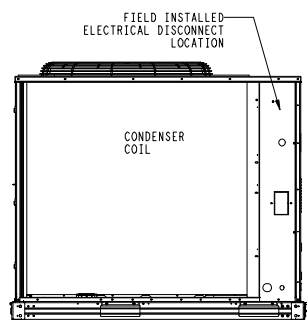
Carrier THIS DOCUMENT IS THE PROPERTY OF CARRIER CORPORATION AND IS DELIVERED UPON THE EXPRESS CONDITION THAT THE CONTENTS WILL NOT BE DISCLOSED OR USED WITHOUT CARRIER CORPORATION'S WRITTEN CONSENT. SUBMISSION OF THESE DRAWINGS OR DOCUMENTS DOES NOT CONSTITUTE PART PERFORMANCE OR ACCEPTANCE OF CONTRACT.



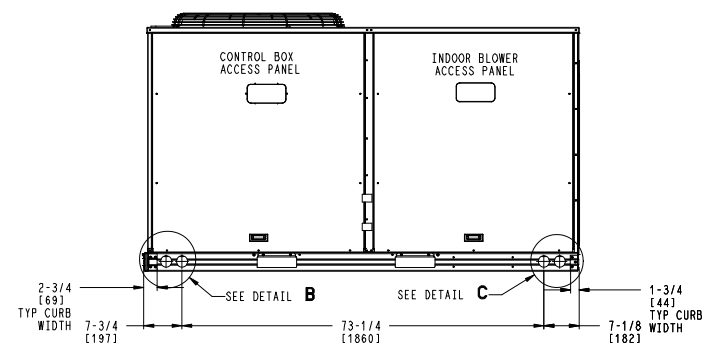
INSIDE BASERAIL DIMENSIONS
BOTTOM



BACK



LEFT



FRONT

ITC CLASSIFICATION	SHEET	DATE	SUPERCEDES	50FE-14 SINGLE ZONE ELECTRICAL COOLING WITH ELECTRIC HEAT	48TM009981	REV
U. S. ECCN: NSR	3 OF 3	08/02/24	-			-

Performance Summary For RTU-4 r1

Project: Ashley Homestore R1
Prepared By:

12/11/2024
05:36PM

Part Number: 50FE-M14A3N6-8F3A0

Refrigerant: R-454B
ARI EER: 11.00
IEER: 15.2

Base Unit Dimensions

Unit Length: 88.1 in
Unit Width: 59.5 in
Unit Height: 49.4 in

Operating Weight

Base Unit Weight: 978 lb
High Static - EcoBlue Vane Axial Fan: 30 lb
Standard Leak Enthalpy Economizer with Barometric Relief: 37 lb
Hinged Access Panels: 5 lb

Accessories

Single Point Kit: 12 lb
Total Operating Weight: 1062 lb

Unit

Unit Voltage-Phase-Hertz: 460-3-60
Air Discharge: Vertical
Fan Drive Type: Vane Axial
Actual Airflow: 5000 CFM
Site Altitude: 0 ft

Cooling Performance

Condenser Entering Air DB: 95.0 F
Evaporator Entering Air DB: 80.0 F
Evaporator Entering Air WB: 67.0 F
Entering Air Enthalpy: 31.44 BTU/lb
Evaporator Leaving Air DB: 59.6 F
Evaporator Leaving Air WB: 57.7 F
Evaporator Leaving Air Enthalpy: 24.81 BTU/lb
Gross Cooling Capacity: 149.09 MBH
Gross Sensible Capacity: 110.08 MBH
Compressor Power Input: 11.24 kW
Coil Bypass Factor: 0.060

Heating Performance

Heating Airflow: 5000 CFM
Entering Air Temp: 70.0 F
Leaving Air Temp: 89.1 F
Electric Heating Capacity: 30.30 kW

Supply Fan

External Static Pressure: 0.80 in wg
Options / Accessories Static Pressure
Electric Heaters: 0.13 in wg
Economizer: 0.32 in wg
Application External Static (ESP + Unit Opts/Acc.): 1.25 in wg
Fan RPM: 1916
Fan Power: 3.65 BHP
NOTE: Selected IFM RPM Range: 1178 - 2200

Selection includes construction throwaway filter into the base fan curve. This filter is not MERV Rated.

Electrical Data

Voltage Range: 414 - 506

Performance Summary For RTU-4 r1

Project: Ashley Homestore R1
Prepared By:

12/11/2024
05:36PM

Compressor #1 RLA:.....	8.8
Compressor #1 LRA:.....	75
Compressor #2 RLA:.....	9.1
Compressor #2 LRA:.....	75
Actual Electric Heater kW:.....	30.3
Electric Heater FLA:.....	39.7
Indoor Fan Motor Type:.....	HIGH
Indoor Fan Motor FLA (Total):.....	5.6
Power Supply MCA:.....	57
Power Supply MOCP (Fuse or HACR):.....	60
Disconnect Size FLA:.....	52
Disconnect Size LRA:.....	165
Electrical Convenience Outlet:.....	None
Outdoor Fan [Qty / FLA (ea)]:.....	1 / 7.4
Electric Heater Part Number:.....	422A
Electric Heater Number of Stages:.....	2

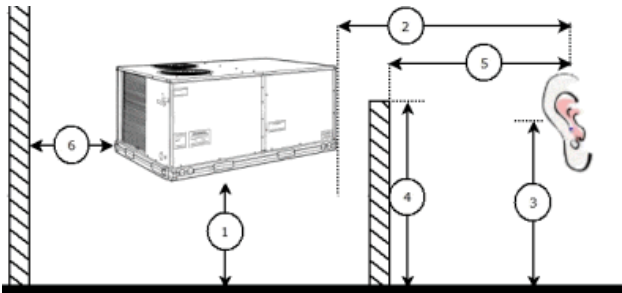
Control Panel SCCR: 5kA RMS at Rated Symmetrical Voltage

Acoustics

Sound Power Levels, db re 10E-12 Watts

	Discharge	Inlet	Outdoor
63 Hz	94.9	88.7	85.6
125 Hz	88.3	83.2	84.7
250 Hz	84.3	75.4	80.5
500 Hz	81.9	73.9	76.0
1000 Hz	83.1	72.4	72.4
2000 Hz	80.1	68.2	68.0
4000 Hz	74.8	58.5	62.8
8000 Hz	66.9	50.5	59.3
A-Weighted	87.1	77.0	79.0

Advanced Acoustics



Advanced Acoustics Parameters

1. Unit height above ground:.....	30.0 ft
2. Horizontal distance from unit to receiver:.....	50.0 ft
3. Receiver height above ground:.....	5.7 ft
4. Height of obstruction:.....	0.0 ft
5. Horizontal distance from obstruction to receiver:.....	0.0 ft
6. Horizontal distance from unit to obstruction:.....	0.0 ft

Detailed Acoustics Information

Performance Summary For RTU-4 r1

Project: Ashley Homestore R1
 Prepared By:

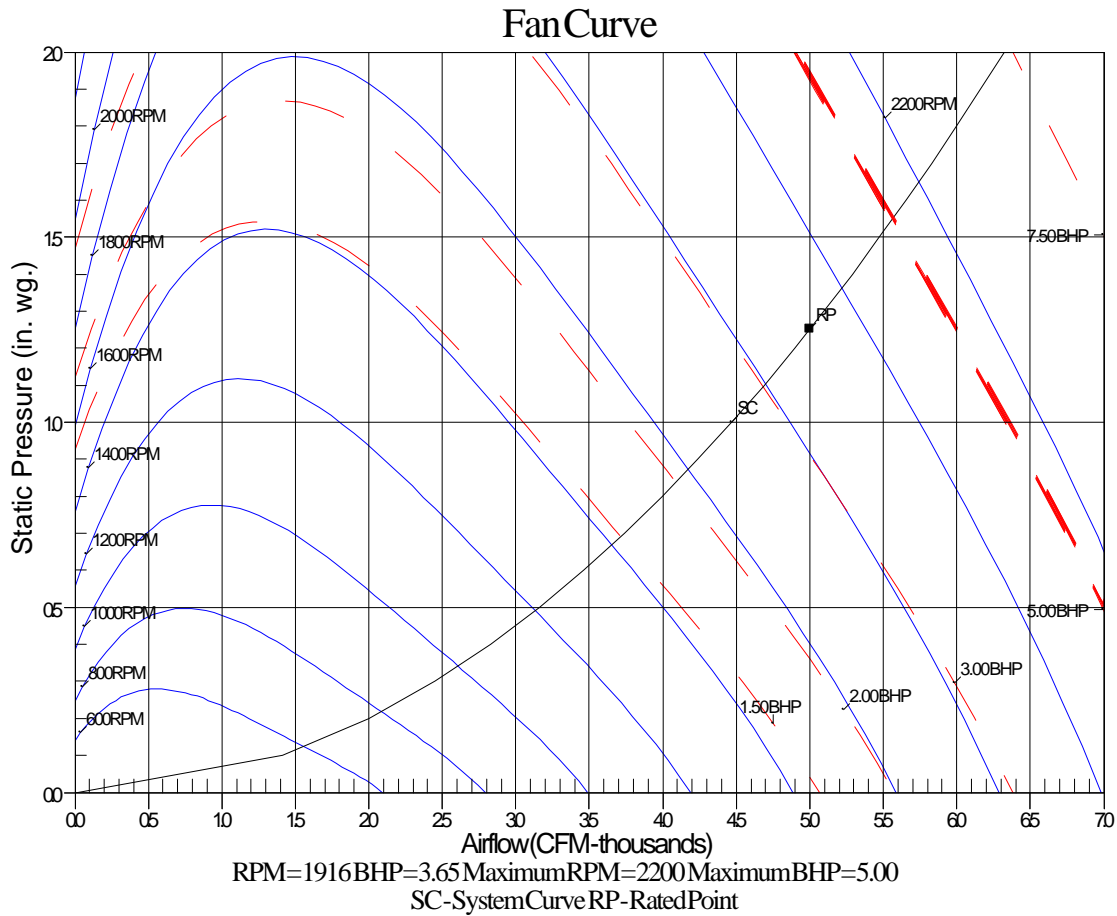
12/11/2024
 05:36PM

Octave Band Center Freq. Hz	63	125	250	500	1k	2k	4k	8k	Overall
A	85.6	84.7	80.5	76.0	72.4	68.0	62.8	59.3	89.2 Lw
B	59.4	68.6	71.9	72.8	72.4	69.2	63.8	58.2	78.5 LwA
C	53.2	52.3	48.1	43.6	40.0	35.6	30.4	26.9	56.8 Lp
D	27.0	36.2	39.5	40.4	40.0	36.8	31.4	25.8	46.1 LpA

Legend

- A Sound Power Levels at Unit's Acoustic Center, Lw
- B A-Weighted Sound Power Levels at Unit's Acoustic Center, LwA
- C Sound Pressure Levels at Specific Distance from Unit, Lp
- D A-Weighted Sound Pressure Levels at Specific Distance from Unit, LpA

Calculation methods used in this program are patterned after the ASHRAE Guide; other ASHRAE Publications and the AHRI Acoustical Standards. While a very significant effort has been made to insure the technical accuracy of this program, it is assumed that the user is knowledgeable in the art of system sound estimation and is aware of the tolerances involved in real world acoustical estimation. This program makes certain assumptions as to the dominant sound sources and sound paths which may not always be appropriate to the real system being estimated. Because of this, no assurances can be offered that this software will always generate an accurate sound prediction from user supplied input data. If in doubt about the estimation of expected sound levels in a space, an Acoustical Engineer or a person with sound prediction expertise should be consulted.



Unit Report For RTU-5,6,7,8 r1

Project: Ashley Homestore R1
Prepared By:

12/11/2024
05:36PM

Unit Parameters

Unit Model: **50FE-M24A2N6-8F3A0**
 Unit Size: **24 (20.0 Tons)**
 Volts-Phase-Hertz: **460-3-60**
 Heating Type: **Electric**
 Refrigerant: **R-454B**
 Heat Control: **Two-Stage Cooling, Single Circuit**
 Duct Cfg: **Vertical Supply / Vertical Return**

Dimensions (ft. in.) & Weight (lb.) ***

Unit Length: **11' 9.5"**
 Unit Width: **7' 2.375"**
 Unit Height: **3' 11.75"**
Total Operating Weight: 2139 lb

*** Weights and Dimensions are approximate. Weight does not include unit packaging. Approximate dimensions are provided primarily for shipping purposes. For exact dimensions and weights, refer to appropriate product data catalog.

Lines and Filters

Condensate Drain Line Size: **3/4**
 Return Air Filter Type: **Throwaway**
 Return Air Filter Quantity: **6**
 Return Air Filter Size: **20 x 25 x 2**

Selection includes construction throwaway filter into the base fan curve.

Unit Configuration

Std / Med Static - **EcoBlue** Vane Axial, Vertical Supply
 Pre-Coat Al/Cu - Al/Cu Louvered Hail Guards
 Electromechanical Controls with POL224 EconomizerONE (includes FDD)
 Standard Leak Enthalpy Economizer with Barometric Relief
 Hinged Access Panels
 Standard Packaging

Warranty Information

5-Year compressor parts (STD.)
 5-Year electric heater (STD.)
 1-Year parts (STD.)

No optional warranties were selected.

NOTE: Please see Warranty Catalog 500-089 for explanation of policies and ordering methods.

Ordering Information

Part Number	Description	Quantity
50FE-M24A2N6-8F3A0	Rooftop Unit	4
	Base Unit	
	Pre-Coat Al/Cu - Al/Cu Louvered Hail Guards	
	Hinged Access Panels	
	Electromechanical control, Low Leak EconomizerONE, enthalpy economizer, barometric relief and POL224	
Field Installed Accessories		
33CONNECTSTAT43FX	Carrier Connect™ Wi-Fi® 7-day programmable/non-prog	4
CRHEATER458A00	Electric Heater	4
CRSINGLE057A00	Single Point Kit	4

Certified Drawing for RTU-5,6,7,8 r1

Project: Ashley Homestore R1
Prepared By:

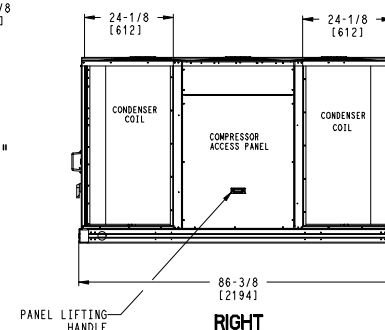
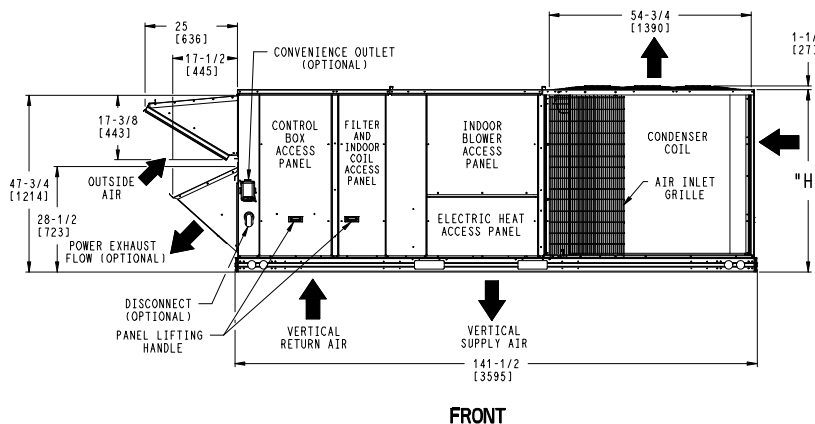
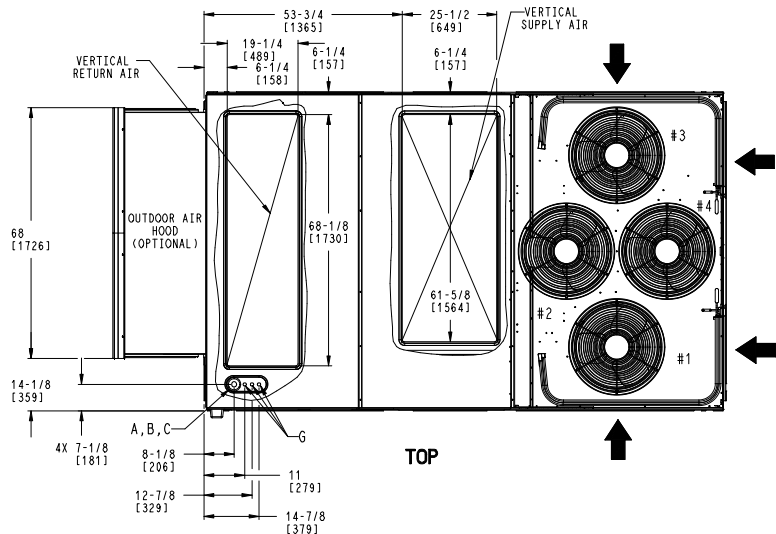
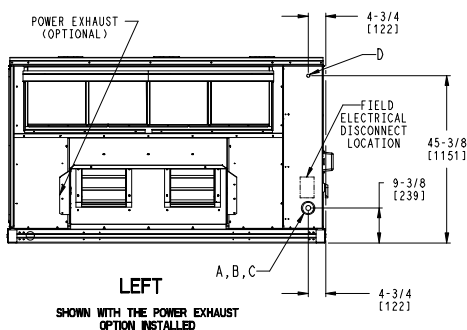
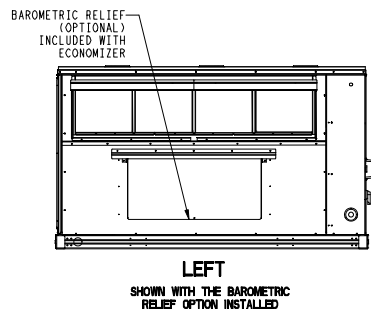
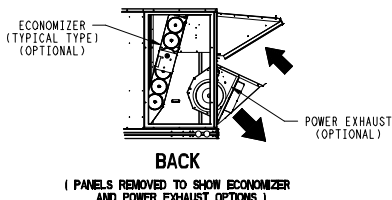
12/11/2024
05:36PM

Carrier THIS DOCUMENT IS THE PROPERTY OF CARRIER CORPORATION AND IS DELIVERED UPON THE EXPRESS CONDITION THAT THE CONTENTS WILL NOT BE DISCLOSED OR USED WITHOUT CARRIER CORPORATION'S WRITTEN CONSENT. SUBMISSION OF THESE DRAWINGS OR DOCUMENTS DOES NOT CONSTITUTE PART PERFORMANCE OR ACCEPTANCE OF CONTRACT.

CONNECTION SIZES	
A	1 3/8" DIA [35] FIELD POWER SUPPLY KNOCKOUT
B	3" DIA [76] FIELD POWER SUPPLY KNOCKOUT
C	3 5/8" DIA [92] FIELD POWER SUPPLY KNOCKOUT
D	7/8" DIA [22] FIELD CONTROL WIRING HOLE
G	7/8" DIA [22] FIELD CONTROL WIRING KNOCKOUT

UNIT	H
24 SIZE	49-3/8 [1253]
28 SIZE	57-3/8 [1456]

- NOTES:
1. DIMENSIONS ARE IN INCHES. DIMENSIONS IN [] ARE IN MILLIMETERS.
 2. CENTER OF GRAVITY
 3. DIRECTION OF AIR FLOW
 4. ALL VIEW DRAWN USING 3RD ANGLE



**DEDICATED VERTICAL AIRFLOW UNIT
24,28 SIZE**


ITC CLASSIFICATION	SHEET	DATE	SUPERCEDES	50FE 24,28 SINGLE ZONE ELECTRICAL COOLING WITH ELECTRIC HEAT	50HE004886	REV
U.S. ECCN:NSR	1 OF 5	05/21/24	-			-

Certified Drawing for RTU-5,6,7,8 r1

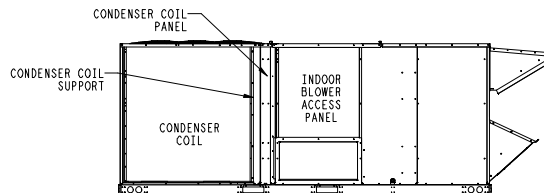
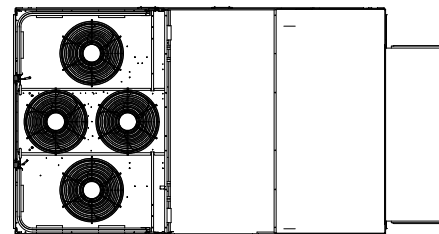
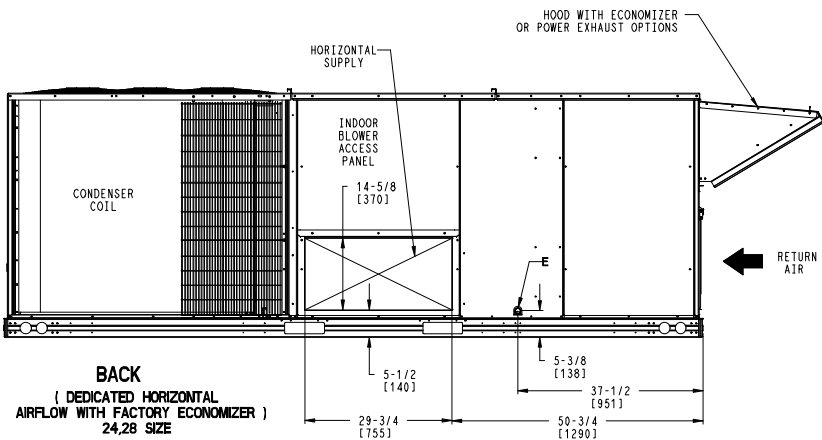
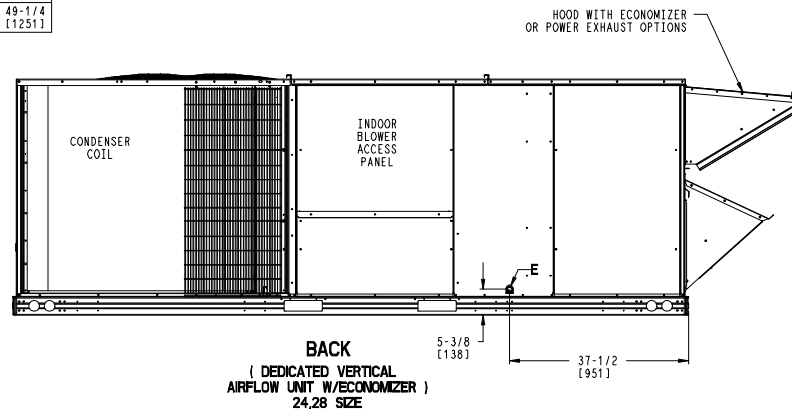
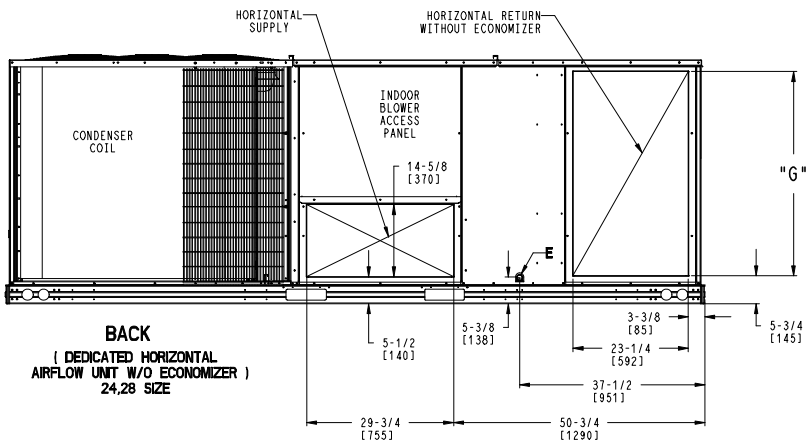
Project: Ashley Homestore R1
Prepared By:

12/11/2024
05:36PM

CONNECTION SIZES	
E	3/4"-14 NPT CONDENSATE DRAIN

	THIS DOCUMENT IS THE PROPERTY OF CARRIER CORPORATION AND IS DELIVERED UPON THE EXPRESS CONDITION THAT THE CONTENTS WILL NOT BE DISCLOSED OR USED WITHOUT CARRIER CORPORATION'S WRITTEN CONSENT.	SUBMISSION OF THESE DRAWINGS OR DOCUMENTS DOES NOT CONSTITUTE PART PERFORMANCE OR ACCEPTANCE OF CONTRACT.
---	---	---

UNIT	G
24 SIZE	41-3/8 [1049]
28 SIZE	49-1/4 [1251]



ITC CLASSIFICATION	SHEET	DATE	SUPERCEDES	50FE 24,28 SINGLE ZONE ELECTRICAL COOLING WITH ELECTRIC HEAT	50HE004886	REV
U. S. ECCN: NSR	3 OF 5	05/21/24	-			-

Certified Drawing for RTU-5,6,7,8 r1

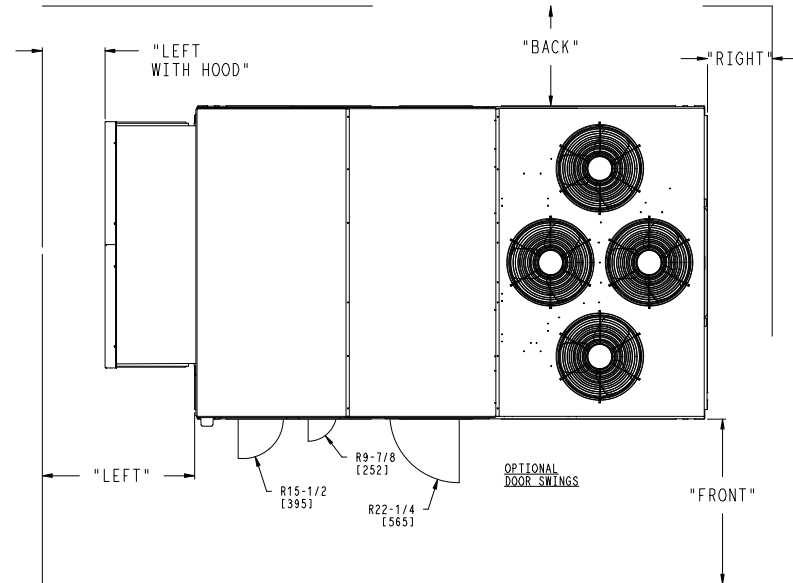
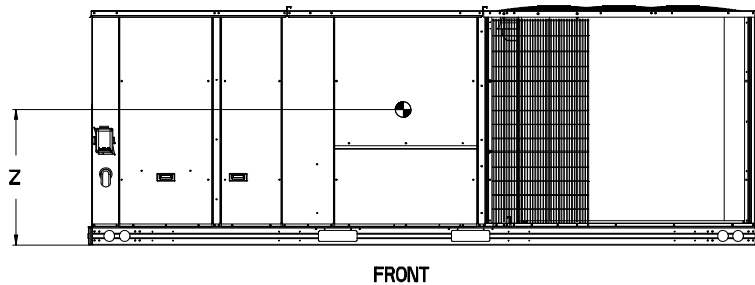
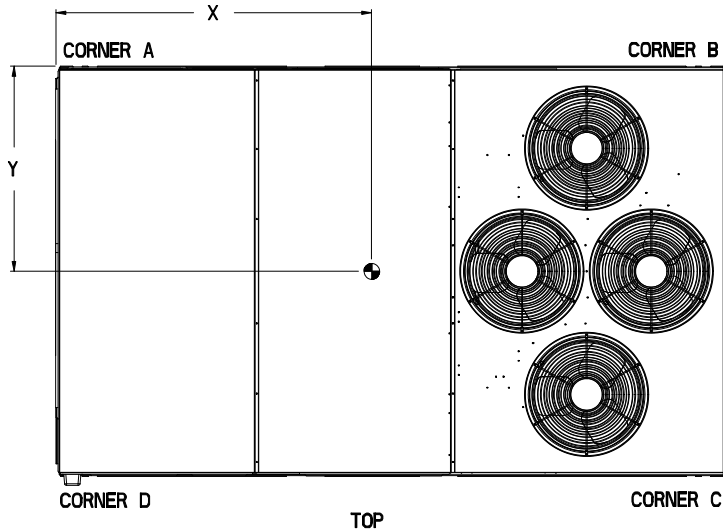
Project: Ashley Homestore R1
Prepared By:

12/11/2024
05:36PM

UNIT	STD. UNIT WEIGHT *		CORNER WEIGHT (A)		CORNER WEIGHT (B)		CORNER WEIGHT (C)		CORNER WEIGHT (D)		C.G.		
	LBS.	KG.	LBS.	KG.	LBS.	KG.	LBS.	KG.	LBS.	KG.	X	Y	Z
50FE 24	1873	850	402	182	473	215	539	244	458	208	76 1/2 [1943]	46 [1168]	16 1/2 [419]
50FE 28	2047	929	431	195	549	249	597	271	469	213	79 1/4 [2013]	45 [1143]	19 [483]

Carrier THIS DOCUMENT IS THE PROPERTY OF CARRIER CORPORATION AND IS DELIVERED UPON THE EXPRESS CONDITION THAT THE CONTENTS WILL NOT BE DISCLOSED OR USED WITHOUT CARRIER CORPORATION'S WRITTEN CONSENT. SUBMISSION OF THESE DRAWINGS OR DOCUMENTS DOES NOT CONSTITUTE PART PERFORMANCE OR ACCEPTANCE OF CONTRACT.

* STANDARD UNIT WEIGHT IS WITHOUT ELECTRIC HEAT AND WITHOUT PACKAGING. FOR OTHER OPTIONS AND ACCESSORIES, REFER TO THE PRODUCT DATA CATALOG.



NOTES:

- CLEARANCE ABOVE THE UNIT TO BE 72"
- FOR ALL MINIMUM CLEARANCES LOCAL CODES OR JURISDICTIONS MAY PREVAIL.


SURFACE	SERVICE WITH		OPERATING CLEARANCE
	CONDUCTIVE BARRIER	NONCONDUCTIVE BARRIER	
FRONT	48 [1219mm]	36 [914mm]	18 [457mm]
LEFT	48 [1219mm]	42 [1067mm]	18 [457mm]
BACK	42 [1067mm]	36 [914mm]	18 [457mm]
LEFT WITH HOOD	36 [914mm]	36 [914mm]	18 [457mm]
RIGHT	36 [914mm]	36 [914mm]	18 [457mm]
TOP	72 [1829mm]	72 [1829mm]	72 [1829mm]

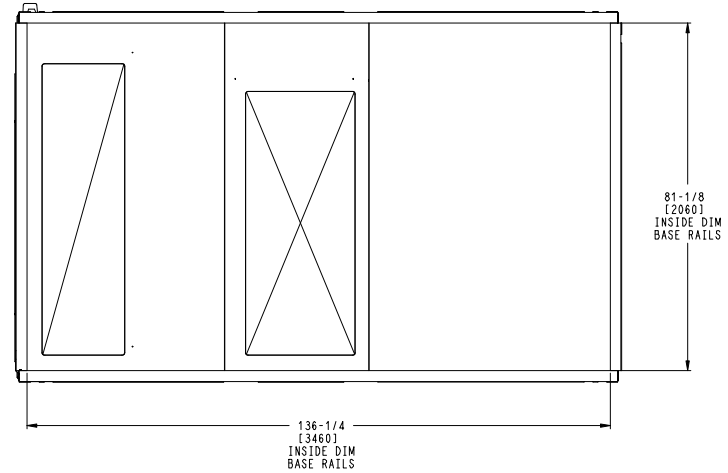
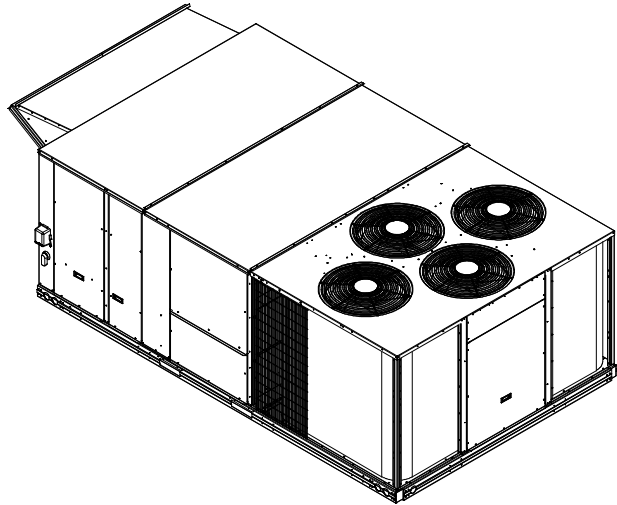
ITC CLASSIFICATION	SHEET	DATE	SUPERCEDES	50FE 24,28 SINGLE ZONE ELECTRICAL COOLING WITH ELECTRIC HEAT	50HE004886	REV
U.S. ECCN:NSR	4 OF 5	05/21/24	-			-

Certified Drawing for RTU-5,6,7,8 r1

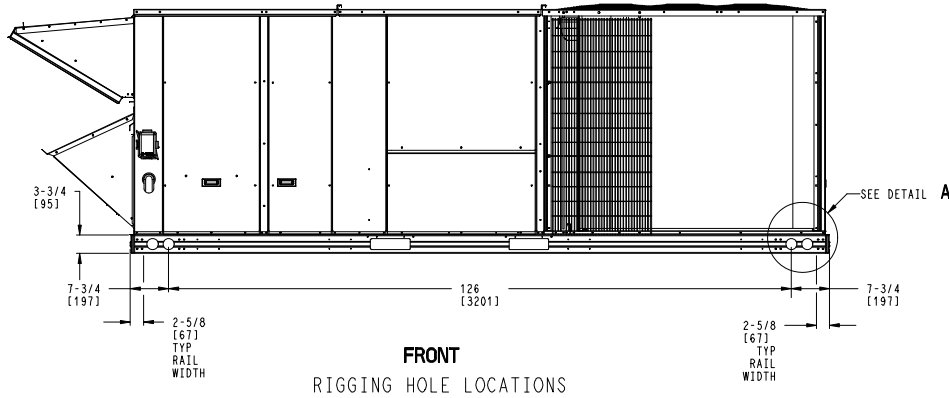
Project: Ashley Homestore R1
Prepared By:

12/11/2024
05:36PM

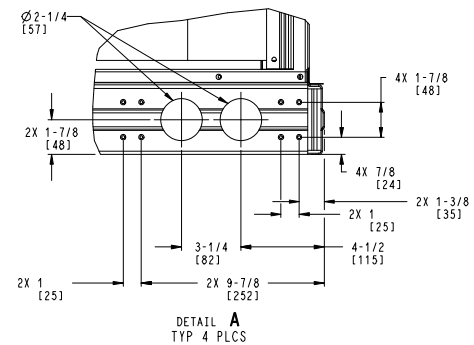
	THIS DOCUMENT IS THE PROPERTY OF CARRIER CORPORATION AND IS DELIVERED UPON THE EXPRESS CONDITION THAT THE CONTENTS WILL NOT BE DISCLOSED OR USED WITHOUT CARRIER CORPORATION'S WRITTEN CONSENT.	SUBMISSION OF THESE DRAWINGS OR DOCUMENTS DOES NOT CONSTITUTE PART PERFORMANCE OR ACCEPTANCE OF CONTRACT.
---	---	---



BOTTOM
INSIDE BASERAIL DIMENSIONS



FRONT
RIGGING HOLE LOCATIONS



DETAIL A
TYP 4 PLCS

ITC CLASSIFICATION	SHEET	DATE	SUPERCEDES	50FE 24,28 SINGLE ZONE ELECTRICAL COOLING WITH ELECTRIC HEAT	50HE004886	REV
U.S. ECCN: NSR	5 OF 5	05/21/24	-			-

Performance Summary For RTU-5,6,7,8 r1

Project: Ashley Homestore R1
Prepared By:

12/11/2024
05:36PM

Part Number: 50FE-M24A2N6-8F3A0

Refrigerant: R-454B
ARI EER: 10.20
IEER: 14.7

Base Unit Dimensions

Unit Length: 141.5 in
Unit Width: 86.4 in
Unit Height: 47.8 in

Operating Weight

Base Unit Weight: 1873 lb
Standard Leak Enthalpy Economizer with Barometric Relief: 246 lb
Hinged Access Panels: 5 lb

Accessories

Single Point Kit: 15 lb
Total Operating Weight: 2139 lb

Unit

Unit Voltage-Phase-Hertz: 460-3-60
Air Discharge: Vertical
Fan Drive Type: Vane Axial
Actual Airflow: 8000 CFM
Site Altitude: 0 ft

Cooling Performance

Condenser Entering Air DB: 95.0 F
Evaporator Entering Air DB: 80.0 F
Evaporator Entering Air WB: 67.0 F
Entering Air Enthalpy: 31.44 BTU/lb
Evaporator Leaving Air DB: 58.1 F
Evaporator Leaving Air WB: 56.5 F
Evaporator Leaving Air Enthalpy: 24.05 BTU/lb
Gross Cooling Capacity: 266.06 MBH
Gross Sensible Capacity: 189.38 MBH
Compressor Power Input: 21.03 kW
Coil Bypass Factor: 0.132

Heating Performance

Heating Airflow: 8000 CFM
Entering Air Temp: 70.0 F
Leaving Air Temp: 88.1 F
Electric Heating Capacity: 45.90 kW

Supply Fan

External Static Pressure: 0.80 in wg
Options / Accessories Static Pressure
Electric Heaters: 0.08 in wg
Economizer: 0.08 in wg
Application External Static (ESP + Unit Opts/Acc.): 0.96 in wg
Fan RPM: 1747
Fan Power: 3.79 BHP
NOTE: Selected IFM RPM Range: 1166 - 2000

Selection includes construction throwaway filter into the base fan curve. This filter is not MERV Rated.

Electrical Data

Voltage Range: 414 - 506
Compressor #1 RLA: 17.1

Performance Summary For RTU-5,6,7,8 r1

Project: Ashley Homestore R1
Prepared By:

12/11/2024
05:36PM

Compressor #1 LRA:	140
Compressor #2 RLA:	17.1
Compressor #2 LRA:	140
Actual Electric Heater kW:	45.9
Electric Heater FLA:	60.1
Indoor Fan Motor Type:	MED
Indoor Fan Motor FLA (Total):	3
Power Supply MCA:	68
Power Supply MOCP (Fuse or HACR):	70
Disconnect Size FLA:	76
Disconnect Size LRA:	296
Electrical Convenience Outlet:	None
Outdoor Fan [Qty / FLA (ea)]:	4 / 0.9
Electric Heater Part Number:	CRHEATER458A00
Electric Heater Number of Stages:	2

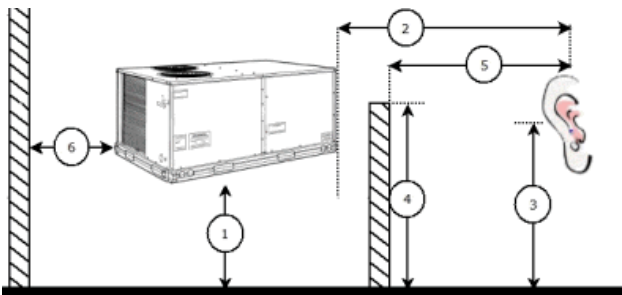
Control Panel SCCR: 5kA RMS at Rated Symmetrical Voltage

Acoustics

Sound Power Levels, db re 10E-12 Watts

	Discharge	Inlet	Outdoor
63 Hz	90.5	78.7	95.6
125 Hz	89.6	74.0	87.5
250 Hz	89.1	69.3	84.2
500 Hz	81.3	66.0	84.2
1000 Hz	80.3	66.3	81.7
2000 Hz	77.5	60.2	77.9
4000 Hz	73.0	51.1	73.2
8000 Hz	62.7	42.4	66.3
A-Weighted	86.1	69.9	86.5

Advanced Acoustics



Advanced Acoustics Parameters

1. Unit height above ground:	30.0 ft
2. Horizontal distance from unit to receiver:	50.0 ft
3. Receiver height above ground:	5.7 ft
4. Height of obstruction:	0.0 ft
5. Horizontal distance from obstruction to receiver:	0.0 ft
6. Horizontal distance from unit to obstruction:	0.0 ft

Detailed Acoustics Information

Performance Summary For RTU-5,6,7,8 r1

Project: Ashley Homestore R1
Prepared By:

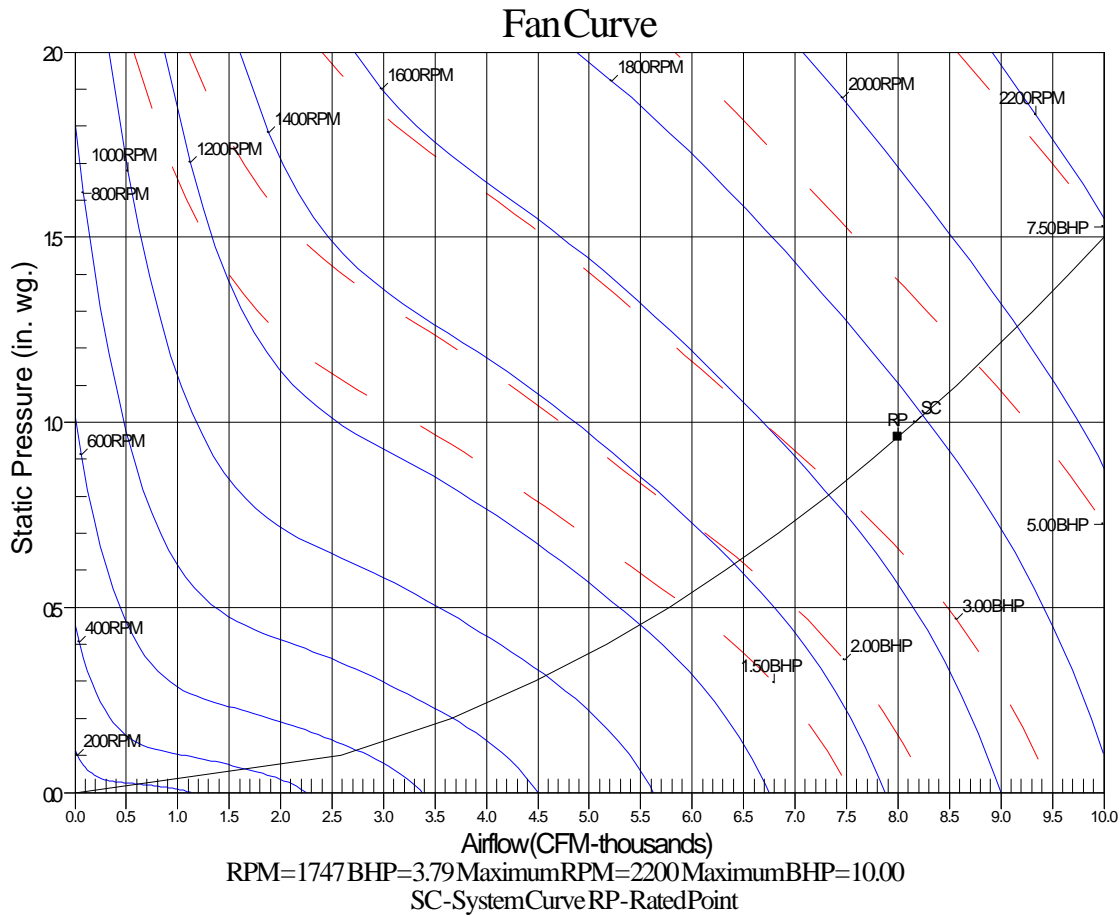
12/11/2024
05:36PM

Octave Band Center Freq. Hz	63	125	250	500	1k	2k	4k	8k	Overall
A	95.6	87.5	84.2	84.2	81.7	77.9	73.2	66.3	96.9 Lw
B	69.4	71.4	75.6	81.0	81.7	79.1	74.2	65.2	86.5 LwA
C	63.2	55.1	51.8	51.8	49.3	45.5	40.8	33.9	64.5 Lp
D	37.0	39.0	43.2	48.6	49.3	46.7	41.8	32.8	54.1 LpA

Legend

- A Sound Power Levels at Unit's Acoustic Center, Lw
- B A-Weighted Sound Power Levels at Unit's Acoustic Center, LwA
- C Sound Pressure Levels at Specific Distance from Unit, Lp
- D A-Weighted Sound Pressure Levels at Specific Distance from Unit, LpA

Calculation methods used in this program are patterned after the ASHRAE Guide; other ASHRAE Publications and the AHRI Acoustical Standards. While a very significant effort has been made to insure the technical accuracy of this program, it is assumed that the user is knowledgeable in the art of system sound estimation and is aware of the tolerances involved in real world acoustical estimation. This program makes certain assumptions as to the dominant sound sources and sound paths which may not always be appropriate to the real system being estimated. Because of this, no assurances can be offered that this software will always generate an accurate sound prediction from user supplied input data. If in doubt about the estimation of expected sound levels in a space, an Acoustical Engineer or a person with sound prediction expertise should be consulted.



Unit Report For RTU-9,11 r1

Project: Ashley Homestore R1
Prepared By:

12/11/2024
05:36PM

Unit Parameters

Unit Model: 50FE-A04A2N6-0A3D0
 Unit Size: 04 (3 Tons)
 Volts-Phase-Hertz: 460-3-60
 Heating Type: Electric
 Refrigerant: R-454B
 Heat Control: One Stage Compressor Models (04-06)
 Duct Cfg: Vertical Supply / Vertical Return

Dimensions (ft. in.) & Weight (lb.) ***

Unit Length: 6' 2.375"
 Unit Width: 3' 10.625"
 Unit Height: 2' 9.375"
Total Operating Weight: 508 lb

*** Weights and Dimensions are approximate. Weight does not include unit packaging. Approximate dimensions are provided primarily for shipping purposes. For exact dimensions and weights, refer to appropriate product data catalog.

Lines and Filters

Condensate Drain Line Size: 3/4
 Return Air Filter Type: Throwaway
 Return Air Filter Quantity: 2
 Return Air Filter Size: 16 x 25 x 2

Selection includes construction throwaway filter into the base fan curve.

Unit Configuration

Direct Drive - EcoBlue - Standard/Medium Static
 Precoat Al/Cu - Al/Cu - Louvered Hail Guards
 Standard Electro-mechanical controls (can be used with field installed economizers and dampers)
 Hinged Access Panels
 Thru-The-Base Connections
 Standard Packaging

Warranty Information

5-Year compressor parts (STD.)
 5-Year electric heater (STD.)
 1-Year parts (STD.)

No optional warranties were selected.

NOTE: Please see Warranty Catalog 500-089 for explanation of policies and ordering methods.

Ordering Information

Part Number	Description	Quantity
50FE-A04A2N6-0A3D0	Rooftop Unit	2
	Base Unit	
	Precoat Al/Cu - Al/Cu - Louvered Hail Guards	
	Hinged Access Panels	
	Thru-The-Base Connections	
	Electromechanical control, No intake or exhaust option. Will allow for use of field installed econom	
Field Installed Accessories		
CRHEATER333A00	Electric Heater	2
33CONNECTSTAT43FX	Carrier Connect™ Wi-Fi® 7-day programmable/non-prog	2
CRTWOPOS010A00	Air Damper	2
CRPECONV003A00	Hinged Panel Sealing Angle Kit	2

Certified Drawing for RTU-9,11 r1

Project: Ashley Homestore R1
Prepared By:

12/11/2024
05:36PM

NOTES:

1. DIMENSIONS ARE IN INCHES. DIMENSIONS IN [] ARE IN MILLIMETERS.
2. CENTER OF GRAVITY
3. DIRECTION OF AIR FLOW
4. ALL VIEW DRAWN USING 3RD ANGLE

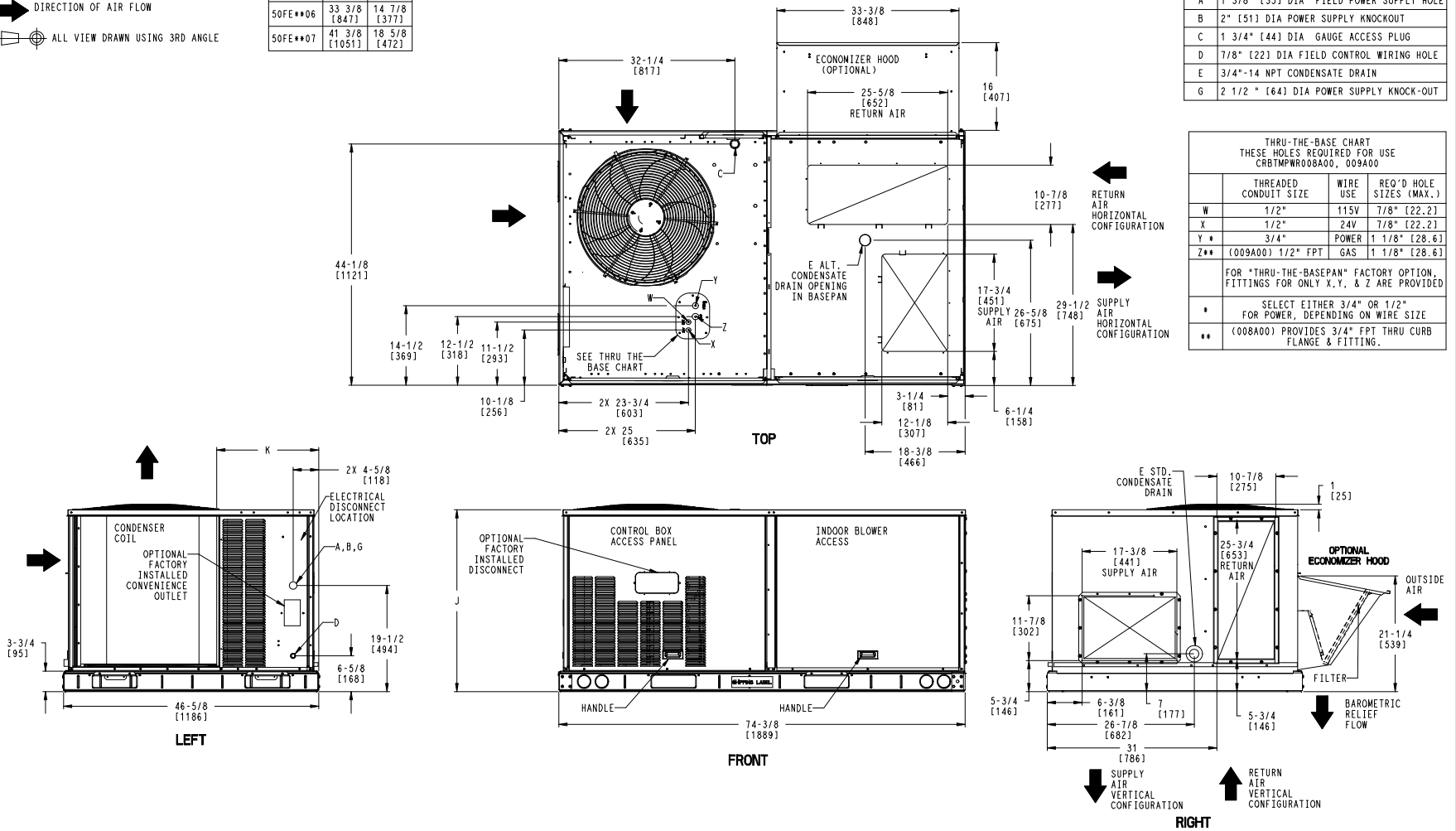
UNIT	J	K
50FE**04	33 3/8 [847]	18 5/8 [472]
50FE**05	33 3/8 [847]	14 7/8 [377]
50FE**06	33 3/8 [847]	14 7/8 [377]
50FE**07	41 3/8 [1051]	18 5/8 [472]

THIS DOCUMENT IS THE PROPERTY OF CARRIER CORPORATION AND IS DELIVERED UPON THE EXPRESS CONDITION THAT THE CONTENTS WILL NOT BE DISCLOSED OR USED WITHOUT CARRIER CORPORATION'S WRITTEN CONSENT. SUBMISSION OF THESE DRAWINGS OR DOCUMENTS DOES NOT CONSTITUTE PART PERFORMANCE OR ACCEPTANCE OF CONTRACT.

CONNECTION SIZES	
A	1 3/8" [35] DIA FIELD POWER SUPPLY HOLE
B	2" [51] DIA POWER SUPPLY KNOCKOUT
C	1 3/4" [44] DIA GAUGE ACCESS PLUG
D	7/8" [22] DIA FIELD CONTROL WIRING HOLE
E	3/4"-14 NPT CONDENSATE DRAIN
G	2 1/2" [64] DIA POWER SUPPLY KNOCK-OUT

THRU-THE-BASE CHART THESE HOLES REQUIRED FOR USE CRBTMPW008A00, 009A00			
	THREADED CONDUIT SIZE	WIRE USE	REQ'D HOLE SIZES (MAX.)
W	1/2"	115V	7/8" [22.2]
X	1/2"	24V	7/8" [22.2]
Y *	3/4"	POWER	1 1/8" [28.6]
Z**	(009A00) 1/2" FPT	GAS	1 1/8" [28.6]

FOR "THRU-THE-BASEPAN" FACTORY OPTION, FITTINGS FOR ONLY X, Y, & Z ARE PROVIDED.
 * SELECT EITHER 3/4" OR 1/2" FOR POWER, DEPENDING ON WIRE SIZE
 ** (008A00) PROVIDES 3/4" FPT THRU CURB FLANGE & FITTING.



ITC CLASSIFICATION	SHEET	DATE	SUPERCEDES	50FE 04-07 SINGLE PACKAGE ELECTRICAL COOLING WITH ELECTRIC HEAT	48TC006965	REV
U.S. ECCN:NSR	1 OF 3	11/20/23	-			-

Performance Summary For RTU-9,11 r1

Project: Ashley Homestore R1
Prepared By:

12/11/2024
05:36PM

Part Number: 50FE-A04A2N6-0A3D0

Refrigerant: R-454B
ARI SEER: 14.00
ARI SEER2: 13.40

Base Unit Dimensions

Unit Length: 74.4 in
Unit Width: 46.6 in
Unit Height: 33.4 in

Operating Weight

Base Unit Weight: 437 lb
Precoat Al/Cu - Al/Cu - Louvered Hail Guards: 13 lb
Hinged Access Panels: 5 lb
Thru-The-Base Connections: 4 lb

Accessories

Electric Heater: 10 lb
Air Damper: 39 lb

Total Operating Weight: 508 lb

Unit

Unit Voltage-Phase-Hertz: 460-3-60
Air Discharge: Vertical
Fan Drive Type: Vane Axial
Actual Airflow: 1200 CFM
Site Altitude: 0 ft

Cooling Performance

Condenser Entering Air DB: 95.0 F
Evaporator Entering Air DB: 80.0 F
Evaporator Entering Air WB: 67.0 F
Entering Air Enthalpy: 31.44 BTU/lb
Evaporator Leaving Air DB: 60.3 F
Evaporator Leaving Air WB: 57.6 F
Evaporator Leaving Air Enthalpy: 24.77 BTU/lb
Gross Cooling Capacity: 36.02 MBH
Gross Sensible Capacity: 25.50 MBH
Compressor Power Input: 2.46 kW
Coil Bypass Factor: 0.196

Heating Performance

Heating Airflow: 1200 CFM
Entering Air Temp: 70.0 F
Leaving Air Temp: 84.5 F
Electric Heating Capacity: 5.50 kW

Supply Fan

External Static Pressure: 0.50 in wg
Options / Accessories Static Pressure
Electric Heaters: 0.07 in wg
Application External Static (ESP + Unit Opts/Acc.): 0.57 in wg
Fan RPM: 1588
Fan Power: 0.29 BHP
NOTE: Selected IFM RPM Range: 1040 - 2190

Selection includes construction throwaway filter into the base fan curve. This filter is not MERV Rated.

Electrical Data

Voltage Range: 414 - 506

Performance Summary For RTU-9,11 r1

Project: Ashley Homestore R1
 Prepared By:

12/11/2024
 05:36PM

Compressor #1 RLA:.....	5.8
Compressor #1 LRA:.....	44
Actual Electric Heater kW:.....	5.5
Electric Heater FLA:.....	7.2
Indoor Fan Motor Type:.....	MED
Indoor Fan Motor FLA (Total):.....	1.2
Power Supply MCA:.....	11
Power Supply MOCB (Fuse or HACR):.....	15
Disconnect Size FLA:.....	10
Disconnect Size LRA:.....	48
Electrical Convenience Outlet:.....	None
Outdoor Fan [Qty / FLA (ea)]:.....	1 / 0.8
Electric Heater Part Number:.....	333A
Electric Heater Number of Stages:.....	1

Control Panel SCCR: 5kA RMS at Rated Symmetrical Voltage

Acoustics

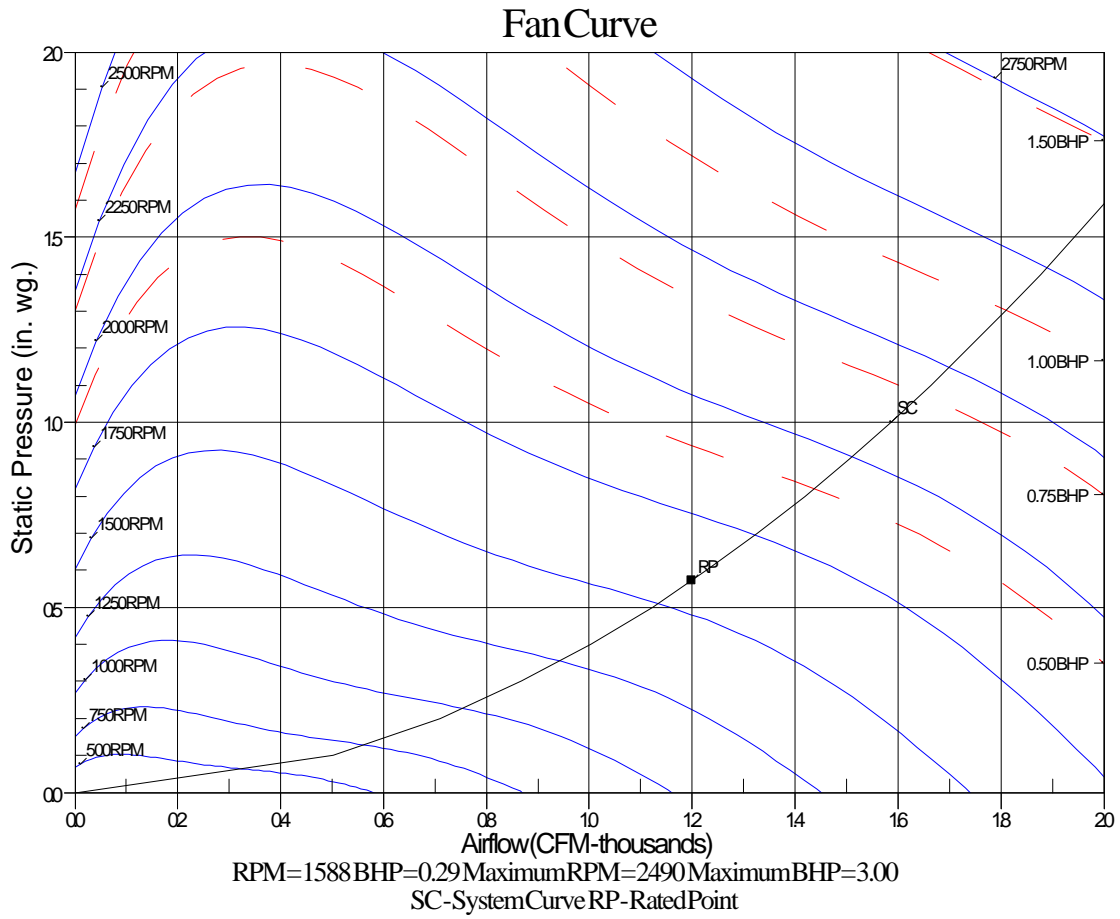
Sound Power Levels, db re 10E-12 Watts

	Discharge	Inlet	Outdoor
63 Hz	90.5	58.4	NA
125 Hz	79.0	74.3	NA
250 Hz	72.7	70.8	NA
500 Hz	66.5	57.1	NA
1000 Hz	61.1	61.0	NA
2000 Hz	72.9	64.2	NA
4000 Hz	56.8	46.0	NA
8000 Hz	56.6	49.5	NA

Performance Summary For RTU-9,11 r1

Project: Ashley Homestore R1
Prepared By:

12/11/2024
05:36PM



Unit Report For **RTU-10 r1**

Project: Ashley Homestore R1
 Prepared By:

12/11/2024
 05:36PM

Unit Parameters

Unit Model: **50FE-M08A3N6-8F3A0**
 Unit Size: **08 (7.5 Tons)**
 Volts-Phase-Hertz: **460-3-60**
 Heating Type: **Electric**
 Refrigerant: **R-454B**
 Heat Control: **Two Stage Cooling, Single Circuit**
 Duct Cfg: **Vertical Supply / Vertical Return**

Dimensions (ft. in.) & Weight (lb.) ***

Unit Length: **7' 4.125"**
 Unit Width: **4' 11.5"**
 Unit Height: **3' 5.25"**
Total Operating Weight: 840 lb

*** Weights and Dimensions are approximate. Weight does not include unit packaging. Approximate dimensions are provided primarily for shipping purposes. For exact dimensions and weights, refer to appropriate product data catalog.

Lines and Filters

Condensate Drain Line Size: **3/4**
 Return Air Filter Type: **Throwaway**
 Return Air Filter Quantity: **4**
 Return Air Filter Size: **16 x 20 x 2**

Selection includes construction throwaway filter into the base fan curve.

Unit Configuration

High Static - **EcoBlue** Vane Axial Fan
 Precoat Al/Cu - Al/Cu - Louvered Hail Guards
 Electro-mechanical Controls with POL224
 Standard Leak Enthalpy Economizer with Barometric Relief
 Hinged Access Panels
 Standard Packaging

Warranty Information

5-Year compressor parts (STD.)
 5-Year electric heater (STD.)
 1-Year parts (STD.)

No optional warranties were selected.

NOTE: Please see Warranty Catalog 500-089 for explanation of policies and ordering methods.

Ordering Information

Part Number	Description	Quantity
50FE-M08A3N6-8F3A0	Rooftop Unit	1
	Base Unit	
	High Static - EcoBlue Vane Axial Fan	
	Precoat Al/Cu - Al/Cu - Louvered Hail Guards	
	Hinged Access Panels	
	Low Leak Enty EconomizerONE with barometric relief	
Field Installed Accessories		
33CONNECTSTAT43FX	Carrier Connect™ Wi-Fi® 7-day programmable/non-prog	1
CRHEATER420A00	Electric Heater	1
CRSINGLE042A00	Single Point Kit	1

Certified Drawing for RTU-10 r1

Project: Ashley Homestore R1
Prepared By:

12/11/2024
05:36PM

- NOTES:
1. DIMENSIONS ARE IN INCHES. DIMENSIONS IN [] ARE IN MILLIMETERS.
 2. CENTER OF GRAVITY
 3. DIRECTION OF AIR FLOW
 4. ALL VIEW DRAWN USING 3RD ANGLE

UNIT	OUTDOOR COIL TYPE	J	K	H
50FE-M08	RTPF	41 1/4 [1048]	33 3/4 [857]	15 7/8 [403]
50FE-M09	RTPF	49 3/8 [1253]	36 3/8 [925]	15 7/8 [403]
50FE-M12	RTPF	49 3/8 [1253]	36 3/8 [925]	15 7/8 [403]

RTPF - ROUND TUBE, PLATE FIN (COPPER/ALUM)

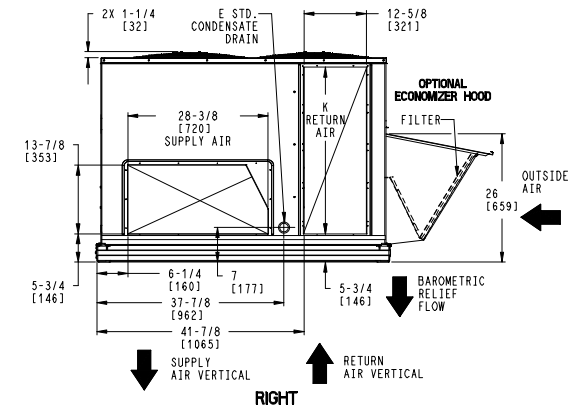
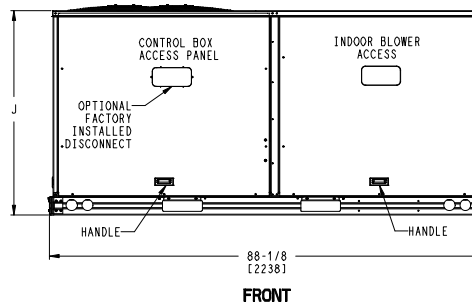
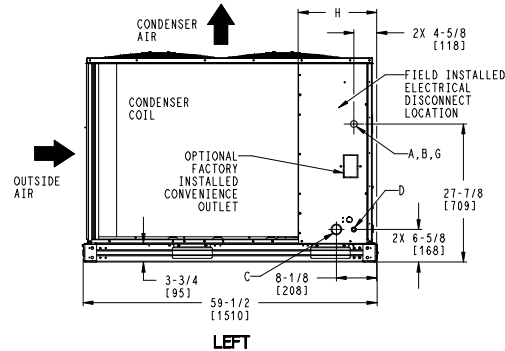
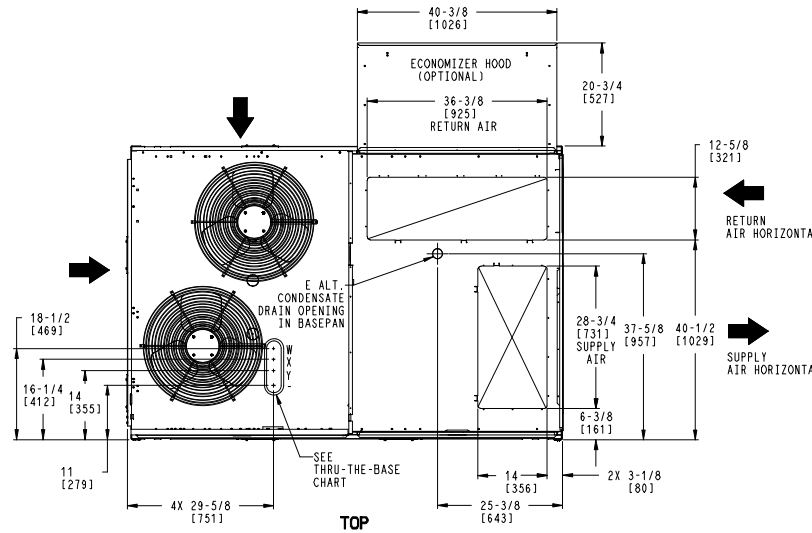
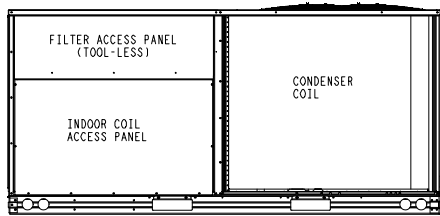
THIS DOCUMENT IS THE PROPERTY OF CARRIER CORPORATION AND IS DELIVERED UPON THE EXPRESS CONDITION THAT THE CONTENTS WILL NOT BE DISCLOSED OR USED WITHOUT CARRIER CORPORATION'S WRITTEN CONSENT.

SUBMISSION OF THESE DRAWINGS OR DOCUMENTS DOES NOT CONSTITUTE PART PERFORMANCE OR ACCEPTANCE OF CONTRACT.

CONNECTION SIZES	
A	1 3/8" [35] DIA FIELD POWER SUPPLY HOLE
B	2 1/2" [64] DIA POWER SUPPLY KNOCKOUT
C	1 3/4" [51] DIA GAUGE ACCESS PLUG
D	7/8" [22] DIA FIELD CONTROL WIRING HOLE
E	3/4"-14 NPT CONDENSATE DRAIN
G	2" [51] DIA POWER SUPPLY KNOCK-OUT

THRU-THE-BASE CHART (FIELD INST)			
THESE HOLES REQUIRED FOR USE WITH ACCY KITS: CRBTMPR002A01			
	THREADED CONDUIT SIZE	WIRE USE	REQ'D HOLE SIZES (MAX.)
W	1/2"	ACC.	7/8" [22.2]
X	1/2"	24V	7/8" [22.2]
Y	1 1/4" (002)	POWER	1 3/4" [44.4]

THRU-THE-BASE CHART (FIOP)
FOR "THRU-THE-BASEPAN" FACTORY OPTION, FITTINGS FOR ONLY X & Y ARE PROVIDED:
(1) 1/2" & (1) 1 1/4" ELECTRICAL FITTINGS.



ITC CLASSIFICATION	SHEET	DATE	SUPERCEDES	50FE 08-12 SINGLE ZONE ELECTRICAL COOLING WITH ELECTRIC HEAT	48TM009323	REV
U.S. ECCN:NSR	1 OF 3	8/8/23	-			-

Certified Drawing for RTU-10 r1

Project: Ashley Homestore R1
Prepared By:

12/11/2024
05:36PM

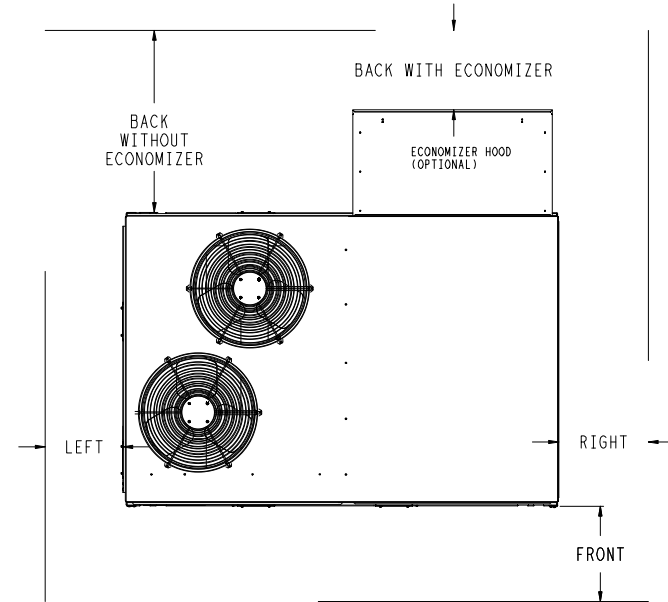
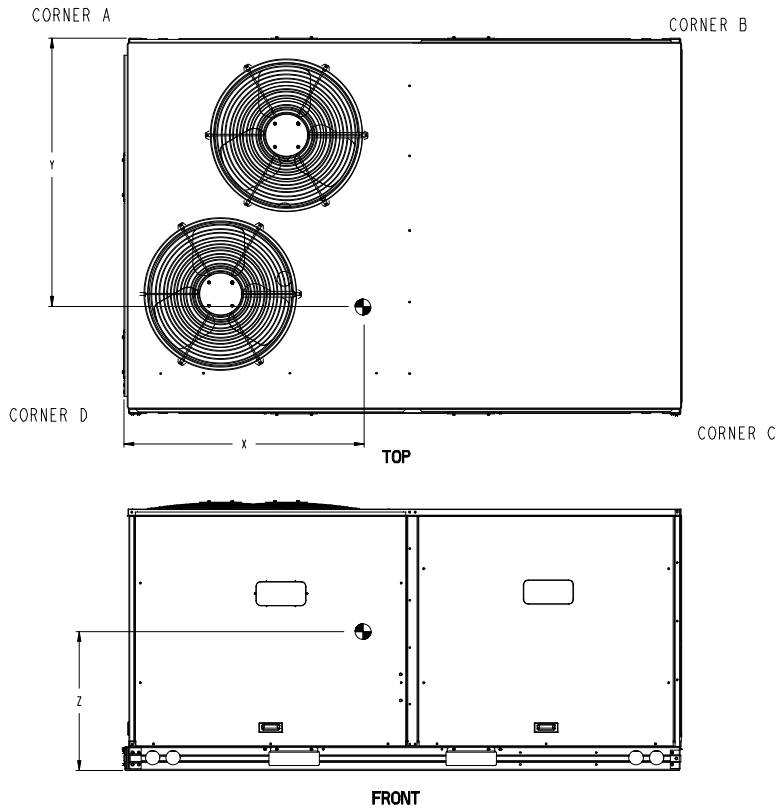
UNIT	OUTDOOR COIL TYPE	STD. UNIT WEIGHT ***		CORNER WEIGHT (A)		CORNER WEIGHT (B)		CORNER WEIGHT (C)		CORNER WEIGHT (D)		C.G.					
		LBS.	KG.	LBS.	KG.	LBS.	KG.	LBS.	KG.	LBS.	KG.	X	Y	Z			
50FE-M08	RTPF	743	337	170	77	142	64	196	89	235	107	40	1/2 [1016]	34	1/2 [876]	20	[508]
50FE-M09	RTPF	805	365	201	91	157	71	196	89	251	114	38	5/8 [961]	33	[838]	19	1/8 [486]
50FE-M12	RTPF	815	370	204	92	159	72	198	90	254	115	38	5/8 [961]	33	[838]	19	1/8 [486]

*** STANDARD UNIT WEIGHT IS WITHOUT ELECTRIC HEAT AND WITHOUT PACKAGING. FOR OTHER OPTIONS AND ACCESSORIES, REFER TO THE PRODUCT DATA CATALOG.

Carrier

THIS DOCUMENT IS THE PROPERTY OF CARRIER CORPORATION AND IS DELIVERED UPON THE EXPRESS CONDITION THAT THE CONTENTS WILL NOT BE DISCLOSED OR USED WITHOUT CARRIER CORPORATION'S WRITTEN CONSENT.

SUBMISSION OF THESE DRAWINGS OR DOCUMENTS DOES NOT CONSTITUTE PART PERFORMANCE OR ACCEPTANCE OF CONTRACT.



NOTE:

1. FOR ALL MINIMUM CLEARANCES LOCAL CODES OR JURISDICTIONS MAY PREVAIL.


SURFACE	CLEARANCE		OPERATING CLEARANCE
	SERVICE WITH CONDUCTIVE BARRIER	SERVICE WITH NONCONDUCTIVE BARRIER	
FRONT	48 [1219mm]	36 [914mm]	18 [457mm]
LEFT	48 [1219mm]	42 [1067mm]	18 [457mm]
BACK W/O ECON	48 [1219mm]	42 [1067mm]	18 [457mm]
BACK W/ECON	36 [914mm]	36 [914mm]	18 [457mm]
RIGHT	36 [914mm]	36 [914mm]	18 [457mm]
TOP	72 [1829mm]	72 [1829mm]	72 [1829mm]

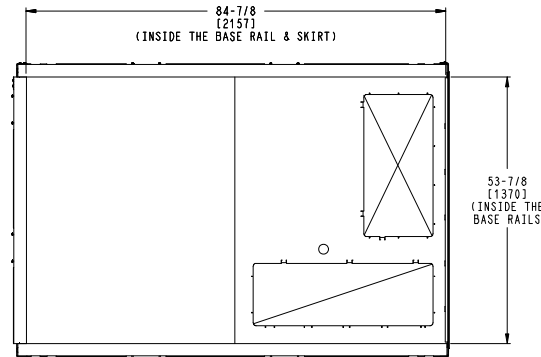
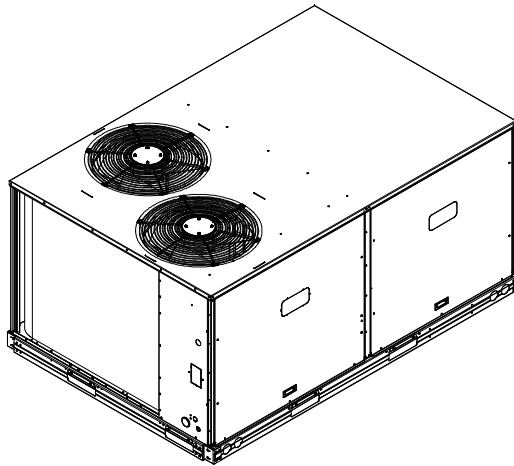
ITC CLASSIFICATION U.S. ECCN: NSR	SHEET 2 OF 3	DATE 8/8/23	SUPERCEDES -	50FE 08-12 SINGLE ZONE ELECTRICAL COOLING WITH ELECTRIC HEAT	48TM009323	REV -
--------------------------------------	-----------------	----------------	-----------------	--	------------	----------

Certified Drawing for RTU-10 r1

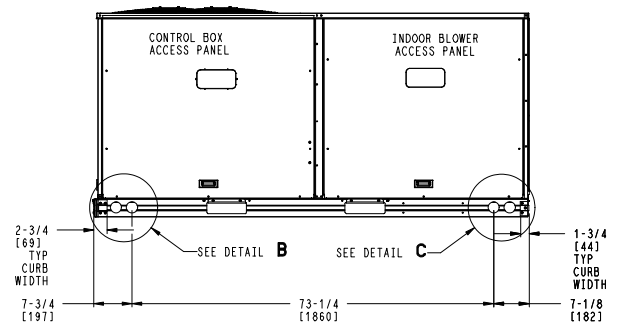
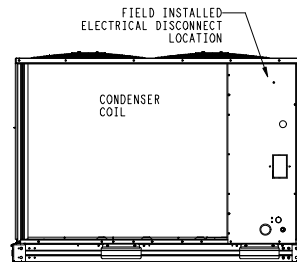
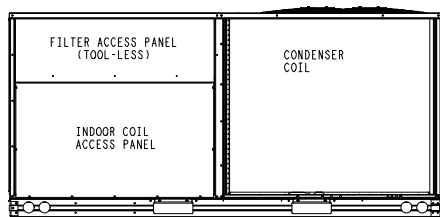
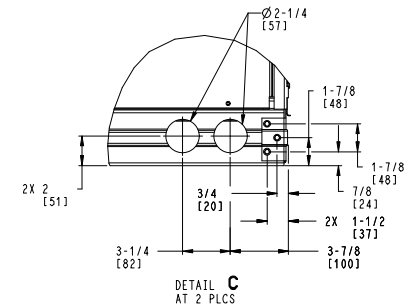
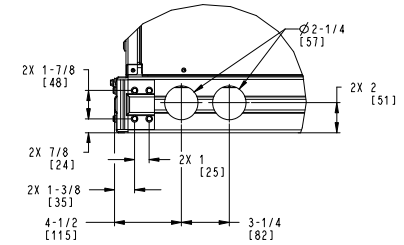
Project: Ashley Homestore R1
Prepared By:

12/11/2024
05:36PM

	THIS DOCUMENT IS THE PROPERTY OF CARRIER CORPORATION AND IS DELIVERED UPON THE EXPRESS CONDITION THAT THE CONTENTS WILL NOT BE DISCLOSED OR USED WITHOUT CARRIER CORPORATION'S WRITTEN CONSENT.	SUBMISSION OF THESE DRAWINGS OR DOCUMENTS DOES NOT CONSTITUTE PART PERFORMANCE OR ACCEPTANCE OF CONTRACT.
---	---	---



INSIDE BASERAIL DIMENSIONS
BOTTOM



ITC CLASSIFICATION	SHEET	DATE	SUPERCEDES	50FE 08-12 SINGLE ZONE ELECTRICAL COOLING WITH ELECTRIC HEAT	48TM009323	REV
U. S. ECCN: NSR	3 OF 3	8/8/23	-			-

Performance Summary For RTU-10 r1

Project: Ashley Homestore R1
Prepared By:

12/11/2024
05:36PM

Part Number: 50FE-M08A3N6-8F3A0

Refrigerant: R-454B
ARI EER: 11.40
IEER: 15.2

Base Unit Dimensions

Unit Length: 88.1 in
Unit Width: 59.5 in
Unit Height: 41.3 in

Operating Weight

Base Unit Weight: 743 lb
High Static - EcoBlue Vane Axial Fan: 30 lb
Precoat Al/Cu - Al/Cu - Louvered Hail Guards: 13 lb
Standard Leak Enthalpy Economizer with Barometric Relief: 37 lb
Hinged Access Panels: 5 lb

Accessories

Single Point Kit: 12 lb

Total Operating Weight: 840 lb

Unit

Unit Voltage-Phase-Hertz: 460-3-60
Air Discharge: Vertical
Fan Drive Type: Vane Axial
Actual Airflow: 3000 CFM
Site Altitude: 0 ft

Cooling Performance

Condenser Entering Air DB: 95.0 F
Evaporator Entering Air DB: 80.0 F
Evaporator Entering Air WB: 67.0 F
Entering Air Enthalpy: 31.44 BTU/lb
Evaporator Leaving Air DB: 58.0 F
Evaporator Leaving Air WB: 57.2 F
Evaporator Leaving Air Enthalpy: 24.52 BTU/lb
Gross Cooling Capacity: 93.40 MBH
Gross Sensible Capacity: 71.12 MBH
Compressor Power Input: 6.22 kW
Coil Bypass Factor: 0.076

Heating Performance

Heating Airflow: 3000 CFM
Entering Air Temp: 70.0 F
Leaving Air Temp: 84.5 F
Electric Heating Capacity: 13.80 kW

Supply Fan

External Static Pressure: 0.80 in wg
Options / Accessories Static Pressure
Electric Heaters: 0.05 in wg
Economizer: 0.11 in wg
Application External Static (ESP + Unit Opts/Acc.): 0.96 in wg
Fan RPM: 1590
Fan Power: 1.49 BHP
NOTE: Selected IFM RPM Range: 970 - 2200

Selection includes construction throwaway filter into the base fan curve. This filter is not MERV Rated.

Electrical Data

Performance Summary For RTU-10 r1

Project: Ashley Homestore R1
Prepared By:

12/11/2024
05:36PM

Voltage Range:.....	414 - 506
Compressor #1 RLA:.....	6.4
Compressor #1 LRA:.....	49
Compressor #2 RLA:.....	6.4
Compressor #2 LRA:.....	49
Actual Electric Heater kW:.....	13.8
Electric Heater FLA:.....	18
Indoor Fan Motor Type:.....	HIGH
Indoor Fan Motor FLA (Total):.....	3.5
Power Supply MCA:.....	27
Power Supply MOCP (Fuse or HACR):.....	30
Disconnect Size FLA:.....	25
Disconnect Size LRA:.....	109
Electrical Convenience Outlet:.....	None
Outdoor Fan [Qty / FLA (ea)]:.....	2 / 0.8
Electric Heater Part Number:.....	420A
Electric Heater Number of Stages:.....	1

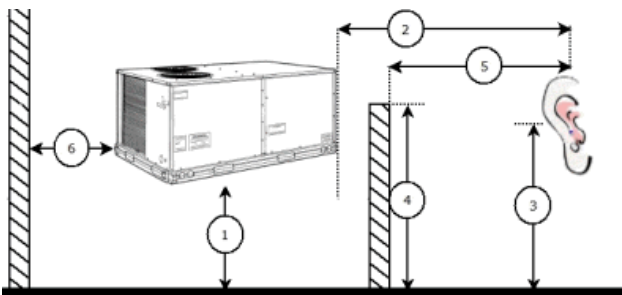
Control Panel SCCR: 5kA RMS at Rated Symmetrical Voltage

Acoustics

Sound Power Levels, db re 10E-12 Watts

	Discharge	Inlet	Outdoor
63 Hz	88.3	83.8	85.6
125 Hz	84.1	79.2	84.7
250 Hz	76.8	71.3	80.5
500 Hz	73.8	66.4	76.0
1000 Hz	75.1	66.5	72.4
2000 Hz	71.1	60.7	68.0
4000 Hz	66.6	53.4	62.8
8000 Hz	57.5	48.0	59.3
 A-Weighted	 79.1	 71.1	 79.0

Advanced Acoustics



Advanced Acoustics Parameters

1. Unit height above ground:.....	30.0 ft
2. Horizontal distance from unit to receiver:.....	50.0 ft
3. Receiver height above ground:.....	5.7 ft
4. Height of obstruction:.....	0.0 ft
5. Horizontal distance from obstruction to receiver:.....	0.0 ft
6. Horizontal distance from unit to obstruction:.....	0.0 ft

Detailed Acoustics Information

Performance Summary For RTU-10 r1

Project: Ashley Homestore R1
 Prepared By:

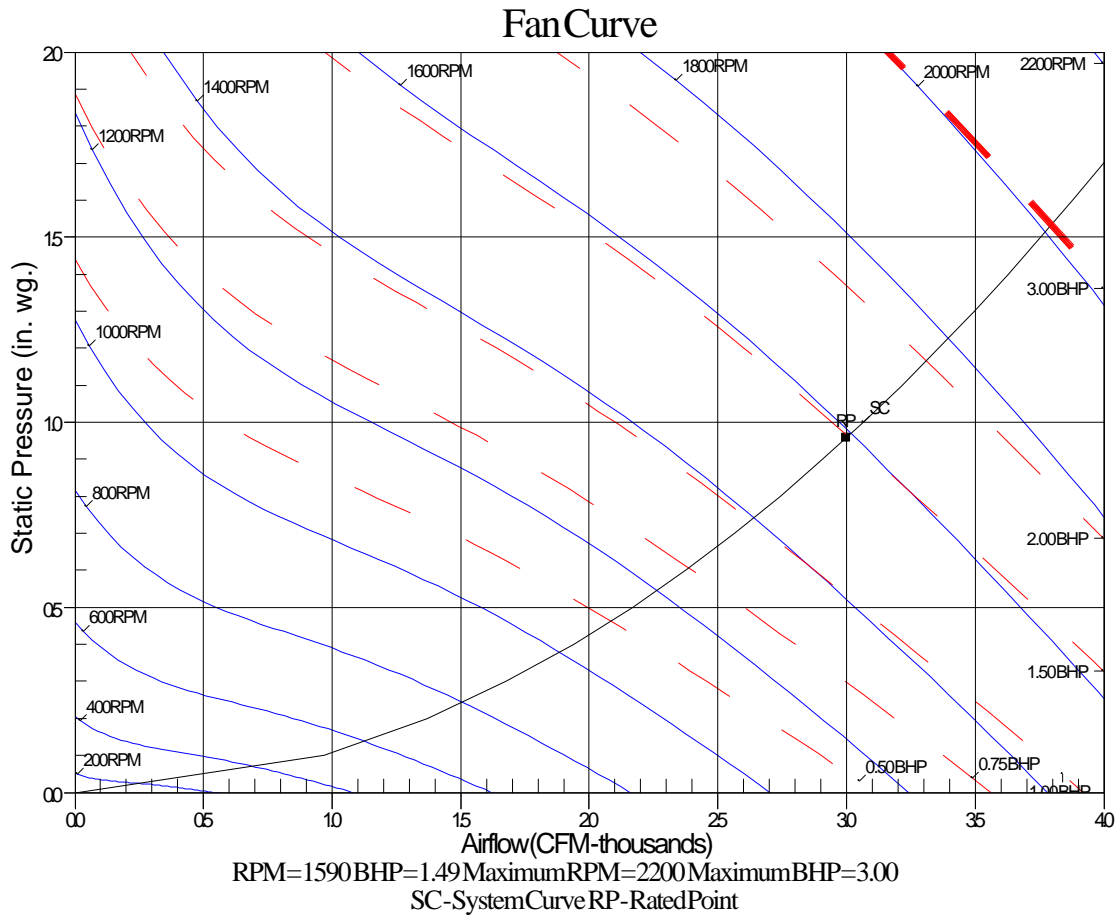
12/11/2024
 05:36PM

Octave Band Center Freq. Hz	63	125	250	500	1k	2k	4k	8k	Overall
A	85.6	84.7	80.5	76.0	72.4	68.0	62.8	59.3	89.2 Lw
B	59.4	68.6	71.9	72.8	72.4	69.2	63.8	58.2	78.5 LwA
C	53.2	52.3	48.1	43.6	40.0	35.6	30.4	26.9	56.8 Lp
D	27.0	36.2	39.5	40.4	40.0	36.8	31.4	25.8	46.1 LpA

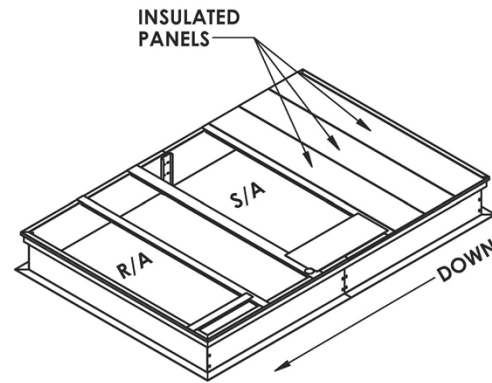
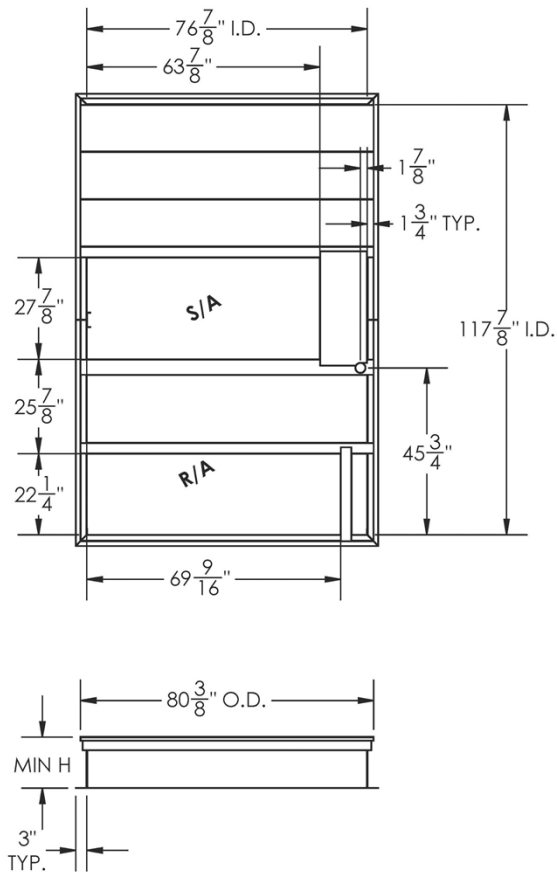
Legend

- A Sound Power Levels at Unit's Acoustic Center, Lw
- B A-Weighted Sound Power Levels at Unit's Acoustic Center, LwA
- C Sound Pressure Levels at Specific Distance from Unit, Lp
- D A-Weighted Sound Pressure Levels at Specific Distance from Unit, LpA

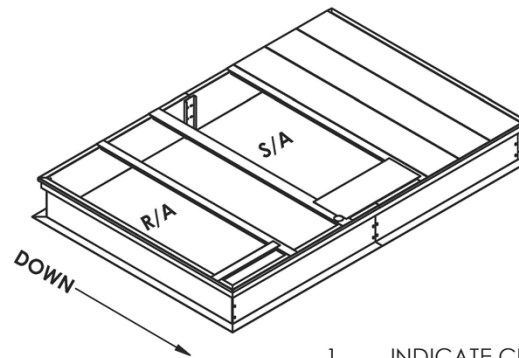
Calculation methods used in this program are patterned after the ASHRAE Guide; other ASHRAE Publications and the AHRI Acoustical Standards. While a very significant effort has been made to insure the technical accuracy of this program, it is assumed that the user is knowledgeable in the art of system sound estimation and is aware of the tolerances involved in real world acoustical estimation. This program makes certain assumptions as to the dominant sound sources and sound paths which may not always be appropriate to the real system being estimated. Because of this, no assurances can be offered that this software will always generate an accurate sound prediction from user supplied input data. If in doubt about the estimation of expected sound levels in a space, an Acoustical Engineer or a person with sound prediction expertise should be consulted.



SOFEM20 - 14" TALL KD, PITCHED UP TO 1"/FT



LONG SLIDE SLOPE
A (SHOWN)
B (OPPOSITE)



SHORT SLIDE SLOPE
C (SHOWN)
D (OPPOSITE)

1. INDICATE CURB PITCH AND DIRECTION
2. INDICATE MINIMUM HEIGHT
3. INDICATE PERIMETER STEEL GAUGE

NOTES:

1. 14 GA. GALV. STEEL CONSTRUCTION
2. 1" X 4" WOOD NAILER
3. 1/4" X 1 1/4" GASKETING
4. SHIPPED KNOCKED DOWN WITH ASSEMBLY HARDWARE
5. DUCT CHANNELS REVERSIBLE ON PITCHED CURBS
6. DUCT WORK MUST BE FIELD SUPPORTED
7. INSTALL & SECURE NEW A/C UNIT ON CURB AS REQUIRED BY LOCAL BUILDING CODE.

OPTIONS:

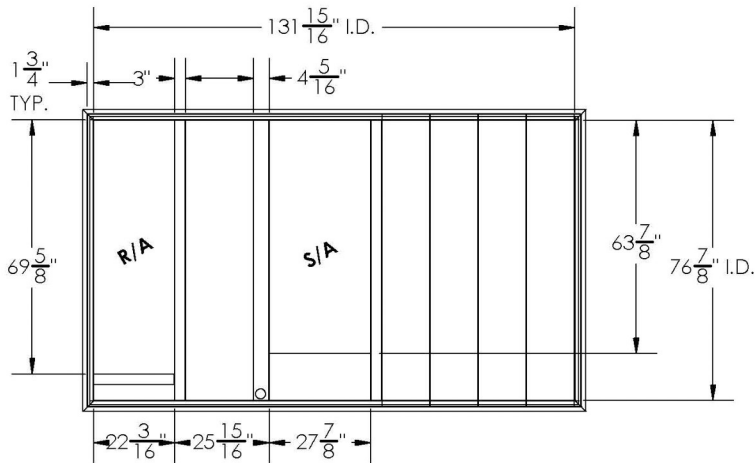
1. HEIGHT OPTIONS
2. PITCHED ROOF APPLICATIONS
3. INSULATED ROOF CURBS
4. ALUMINUM CONSTRUCTION
5. STANDING SEAM METAL ROOF APPLICATIONS
6. ALUMINUM VIBRATION ISOLATION
7. BURGLAR BARS
8. POWER EXHAUST CURB

APPROVED			
DATE			
UNLESS OTHERWISE SPECIFIED ALL DIMENSIONS SHOWN ARE IN INCHES (MILLIMETERS) MILLIMETERS ARE REFERENCE ONLY	CHECK LIST	DATE	
	Drawn by: RAMIRO	01/25/17	
UNLESS OTHERWISE SPECIFIED TOLERANCES ON LENGTH ANGLE	1/16"	2	
	THIRD ANGLE		
MATERIAL	Galvanized Steel		
DWG A		DWG NO.	1/25/2017
SCALE	1:48	SHEET	1 OF 1
			ISS
CCT20-GNR1			

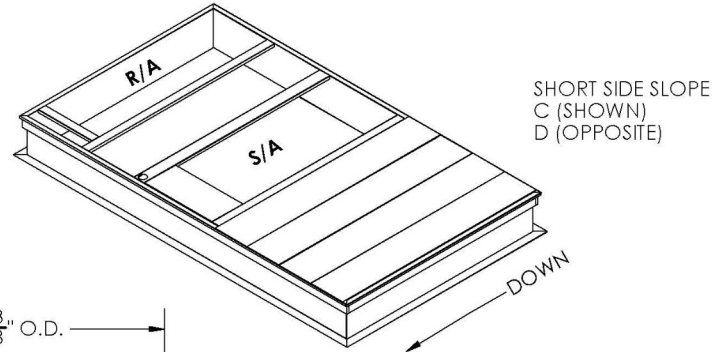
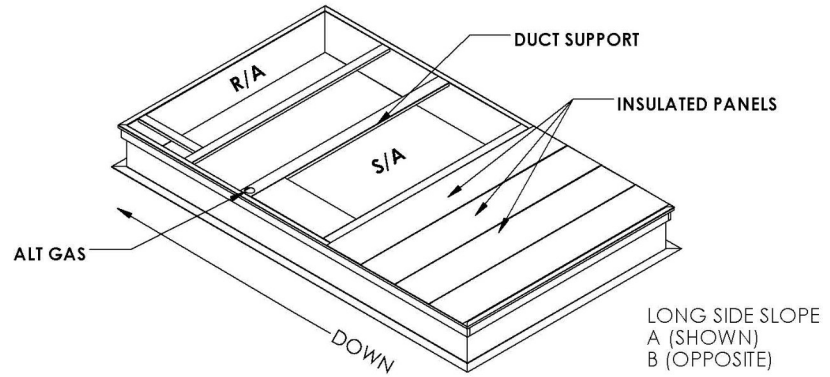
THIS DRAWING CONTAINS PROPRIETARY AND CONFIDENTIAL INFORMATION AND IS PROTECTED BY U.S. AND INTERNATIONAL LAW. UNAUTHORIZED REPRODUCTION, DISCLOSURE OR USE OF THE DRAWING OR THE INFORMATION THEREIN IS EXPRESSLY FORBIDDEN EXCEPT AS AGREED TO IN WRITING BY PLENUMS OF FLORIDA, INC.

CONFIDENTIAL AND PROPRIETARY

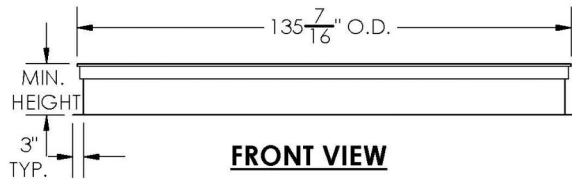
REVISION				
ISS	DESCRIPTION	DATE	APPROVED	
			CHK	ENG



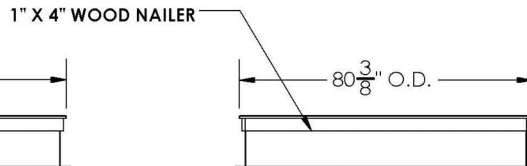
PLAN VIEW



ISOMETRIC VIEW



FRONT VIEW



SIDE VIEW

1. INDICATE CURB PITCH AND DIRECTION
2. INDICATE MINIMUM HEIGHT

NOTES:

1. 14 GA. GALV. STEEL CONSTRUCTION
2. 1" X 4" WOOD NAILER
3. 1/4" X 1 1/4" GASKETING
4. SHIPPED K.D. W/ ASSEMBLY HARDWARE.
5. DUCT WORK MUST BE FIELD SUPPORTED
6. DUCT CHANNELS REVERSIBLE ON PITCHED CURBS

OPTIONS:

1. HEIGHT OPTIONS
2. PITCHED ROOF APPLICATIONS
3. INSULATED ROOF CURBS
4. ALUMINUM CONSTRUCTION
5. STANDING SEAM METAL ROOF APPLICATIONS
6. ALUMINUM VIBRATION ISOLATION
7. BURGLAR BARS
8. POWER EXHAUST CURB

APPROVED		
DATE		
UNLESS OTHERWISE SPECIFIED ALL DIMENSIONS SHOWN ARE IN INCHES (MILLIMETERS) MILLIMETERS ARE REFERENCE ONLY	APPROVALS	DATE
UNLESS OTHERWISE SPECIFIED TOLERANCES ON	DR: RAMIRO	08/08/16
XXX(X) ANGLE ±1*	CHKR:	
THIRD ANGLE	SUPV:	
MATERIAL	ELEC ENG:	
	MECH ENG:	



CCT24-GN

DWG A	DWG NO:	10/6/2017	ISS
SCALE 1:48	SHEET 1	OF 1	

SO FEM 24/28 - 14" TALL KD, PITCHED UP TO 1"/FT

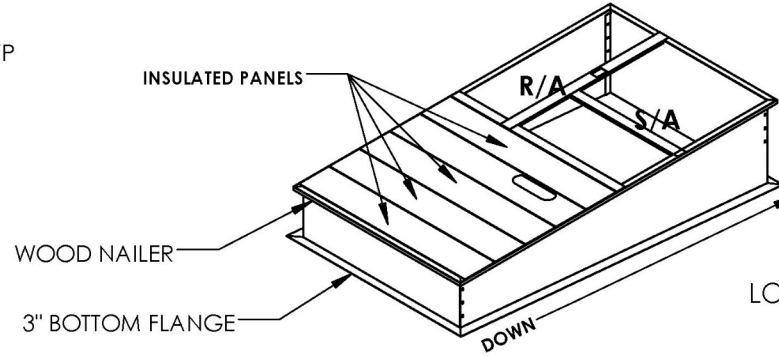
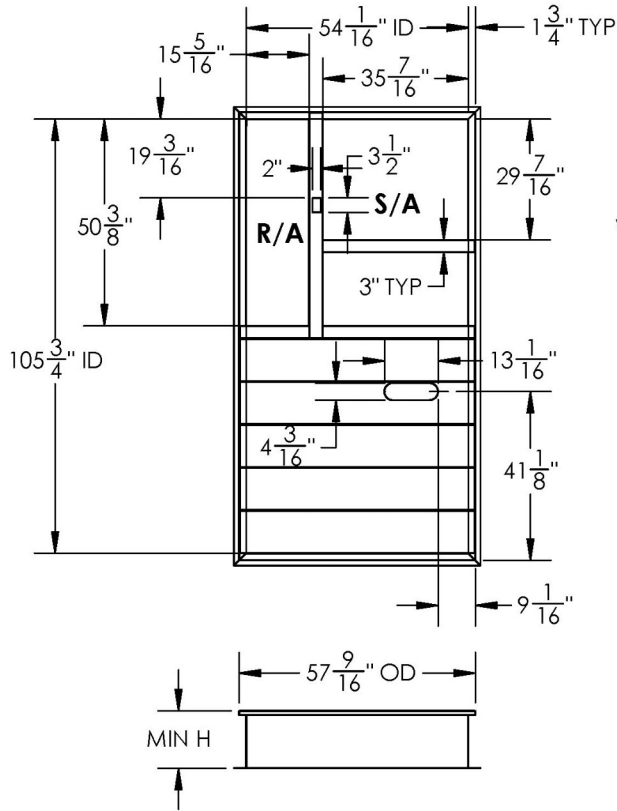
THIS DRAWING CONTAINS PROPRIETARY AND CONFIDENTIAL INFORMATION AND IS PROTECTED BY U.S. AND INTERNATIONAL LAW. UNAUTHORIZED REPRODUCTION, DISCLOSURE OR USE OF THE DRAWING OR THE INFORMATION THEREIN IS EXPRESSLY FORBIDDEN EXCEPT AS AGREED TO IN WRITING BY PLENUMS OF FLORIDA, INC.

CONFIDENTIAL AND PROPRIETARY

WEIGHT: XXX LBS.

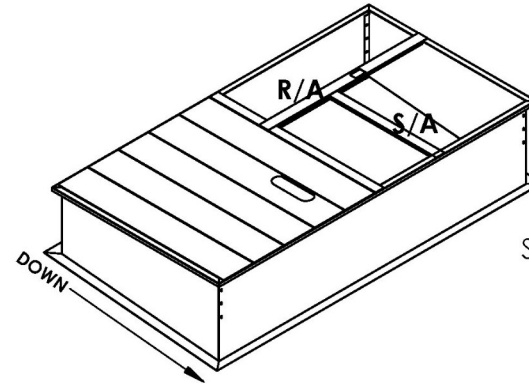
REVISION				
ISS	DESCRIPTION	DATE	APPROVED	
			CHK	ENG

SOFEM16 - 14" TALL KD, PITCHED UP TO 1"/FT



LONG SLIDE SLOPE

A (SHOWN)
B (OPPOSITE)



SHORT SLIDE SLOPE

C (SHOWN)
D (OPPOSITE)

1. INDICATE CURB PITCH AND DIRECTION
2. INDICATE MINIMUM HEIGHT
3. INDICATE PERIMETER STEEL GAUGE

NOTES:

1. 12 TO 16 GA GALV. STEEL CONSTRUCTION
2. 1" X 4" WOOD NAILER
3. 1/4" X 1 1/4" GASKETING
4. SHIPPED KNOCKED DOWN WITH ASSEMBLY HARDWARE
5. DUCT CHANNELS REVERSIBLE ON PITCHED CURBS
6. DUCT WORK MUST BE FIELD SUPPORTED
7. INSTALL & SECURE NEW A/C UNIT ON CURB AS REQUIRED BY LOCAL BUILDING CODE.

OPTIONS:

1. HEIGHT OPTIONS
2. PITCHED ROOF APPLICATIONS
3. INSULATED ROOF CURBS
4. ALUMINUM CONSTRUCTION
5. STANDING SEAM METAL ROOF APPLICATIONS
6. ALUMINUM VIBRATION ISOLATION
7. BURGLAR BARS
8. POWER EXHAUST CURB

APPROVED		DATE	
UNLESS OTHERWISE SPECIFIED ALL DIMENSIONS SHOWN ARE IN INCHES (MILLIMETERS) MILLIMETERS ARE REFERENCE ONLY		APPROVALS	DATE
UNLESS OTHERWISE SPECIFIED TOLERANCES ON ANGLE		DR: RAMIRO	09/23/16
THIRD ANGLE		CHKR:	
MATERIAL		SUPV:	
		ELEC ENG:	
		MECH ENG:	

CC816R1-GN

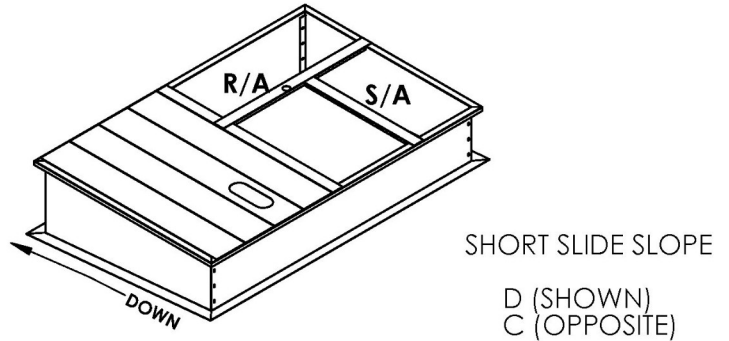
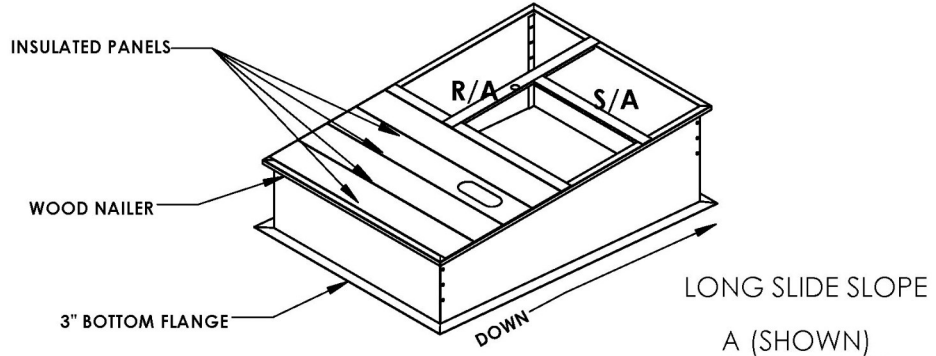
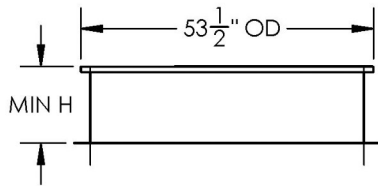
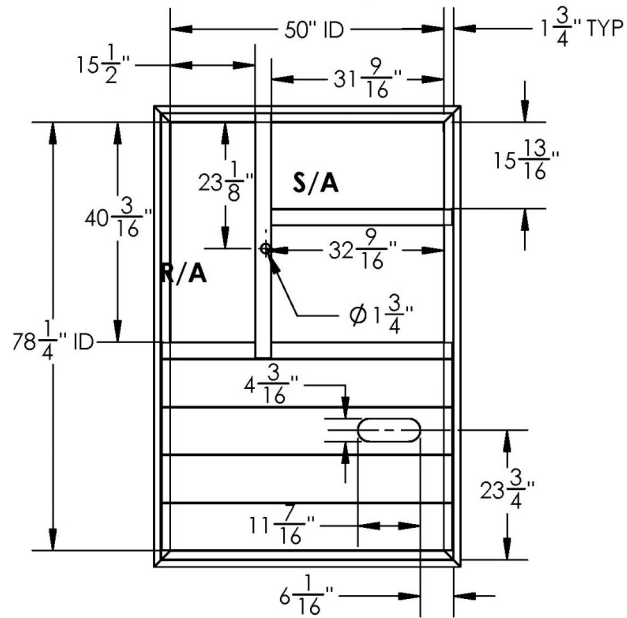
DWG SIZE A	DWG NO:	ISS
SCALE 1:24	SHEET 1 OF 1	

THIS DRAWING CONTAINS PROPRIETARY AND CONFIDENTIAL INFORMATION AND IS PROTECTED BY U.S. AND INTERNATIONAL LAW. UNAUTHORIZED REPRODUCTION, DISCLOSURE OR USE OF THE DRAWING OR THE INFORMATION THEREIN IS EXPRESSLY FORBIDDEN EXCEPT AS AGREED TO IN WRITING BY PLENUMS OF FLORIDA, INC.

CONFIDENTIAL AND PROPRIETARY

REVISION				
ISS	DESCRIPTION	DATE	APPROVED	
			CHK	ENG

WEIGHT: XXX LBS




1. INDICATE CURB PITCH AND DIRECTION
2. INDICATE MINIMUM HEIGHT
3. INDICATE PERIMETER STEEL GAUGE

NOTES:

1. 12 TO 16 GA GALV. STEEL CONSTRUCTION
2. 1" X 4" WOOD NAILER
3. 1/4" X 1 1/4" GASKETING
4. SHIPPED KNOCKED DOWN WITH ASSEMBLY HARDWARE
5. DUCT CHANNELS REVERSIBLE ON PITCHED CURBS
6. DUCT WORK MUST BE FIELD SUPPORTED
7. INSTALL & SECURE NEW A/C UNIT ON CURB AS REQUIRED BY LOCAL BUILDING CODE.

OPTIONS:

1. HEIGHT OPTIONS
2. PITCHED ROOF APPLICATIONS
3. INSULATED ROOF CURBS
4. ALUMINUM CONSTRUCTION
5. STANDING SEAM METAL ROOF APPLICATIONS
6. ALUMINUM VIBRATION ISOLATION
7. BURGLAR BARS
8. POWER EXHAUST CURB

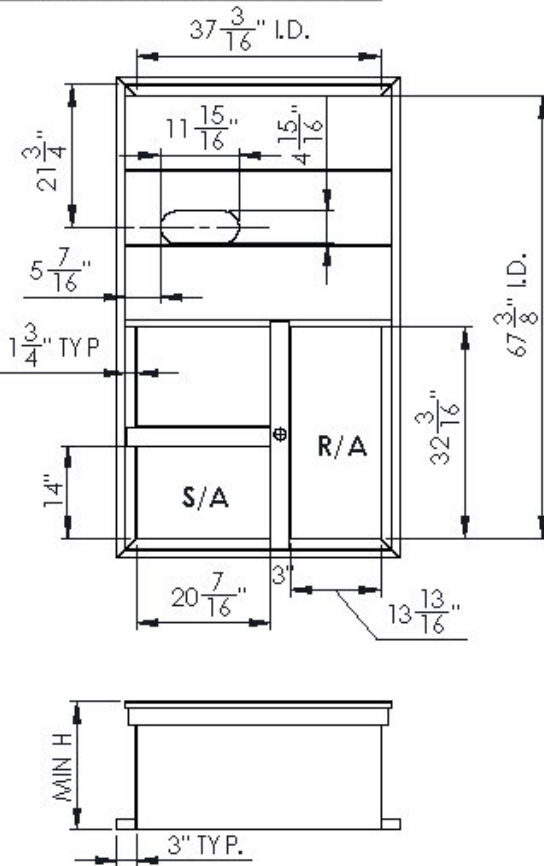
APPROVED									
DATE									
UNLESS OTHERWISE SPECIFIED ALL DIMENSIONS SHOWN ARE IN INCHES (MILLIMETERS) MILLIMETERS ARE REFERENCE ONLY	APPROVALS	DATE							
	DR: RAMIRO	09/22/16							
UNLESS OTHERWISE SPECIFIED TOLERANCES ON ANGLE	CHKR:		<p>CC812R1-GN</p>						
	SUPV:								
THIRD ANGLE	ELEC ENG:		<table border="1"> <tr> <td>DWG A</td> <td>DWG NO:</td> <td>ISS</td> </tr> <tr> <td>SCALE 1:24</td> <td>SHEET 1 OF 1</td> <td> </td> </tr> </table>	DWG A	DWG NO:	ISS	SCALE 1:24	SHEET 1 OF 1	
DWG A	DWG NO:	ISS							
SCALE 1:24	SHEET 1 OF 1								
MATERIAL	MECH ENG:								

SOFE08/14 - 14" TALL KD, PITCHED UP TO 1"/FT

SOFEA04 - 14" TALL KD, PITCHED UP TO 1"/FT

THIS DRAWING IS THE PROPERTY OF PENNUMS INC. AND IS NOT TO BE REPRODUCED OR TRANSMITTED IN ANY FORM OR BY ANY MEANS, ELECTRONIC OR MECHANICAL, INCLUDING PHOTOCOPYING, RECORDING, OR BY ANY INFORMATION STORAGE AND RETRIEVAL SYSTEM. WITHOUT THE WRITTEN PERMISSION OF PENNUMS INC.

CONFIDENTIAL AND PROPRIETARY



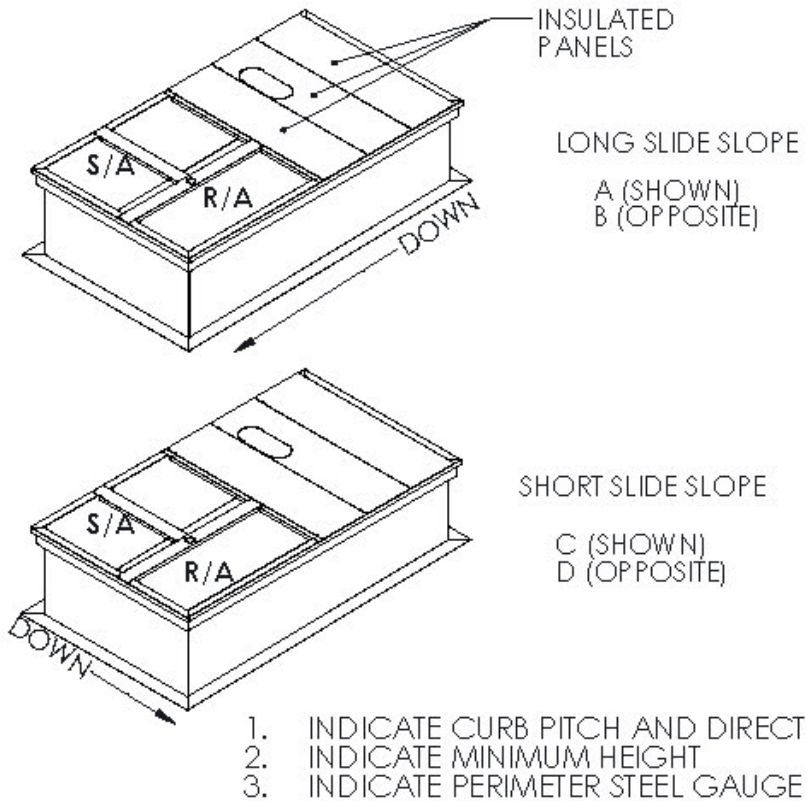
NOTES:

1. 12 TO 16 GA. GALV. STEEL CONSTRUCTION
2. 1" X 4" WOOD NAILER
3. 1/4" X 1 1/4" GASKETING
4. SHIPPED KNOCKED DOWN WITH ASSEMBLY HARDWARE
5. DUCT CHANNELS REVERSIBLE ON PITCHED CURBS
6. DUCT WORK MUST BE FIELD SUPPORTED
7. INSTALL & SECURE NEW A/C UNIT ON CURB AS REQUIRED BY LOCAL BUILDING CODE.

OPTIONS:

1. HEIGHT OPTIONS
2. PITCHED ROOF APPLICATIONS
3. INSULATED ROOF CURBS
4. ALUMINUM CONSTRUCTION
5. STANDING SEAM METAL ROOF APPLICATIONS
6. ALUMINUM VIBRATION ISOLATION
7. BURGLAR BARS
8. POWER EXHAUST CURB

REVISION			
IS	DESCRIPTION	DATE	APPROVED
			CHL
			INC



1. INDICATE CURB PITCH AND DIRECTION
2. INDICATE MINIMUM HEIGHT
3. INDICATE PERIMETER STEEL GAUGE

APPROVED	DATE	
<small> 4 IN 125 DIMENSION OF SPACING ALL DIMENSIONS SHOWN ARE IN INCHES UNLESS OTHERWISE SPECIFIED ALL DIMENSIONS ARE PERPENDICULAR UNLESS OTHERWISE SPECIFIED 4 IN 125 DIMENSION OF SPACING ALL DIMENSIONS SHOWN ARE IN INCHES UNLESS OTHERWISE SPECIFIED ALL DIMENSIONS ARE PERPENDICULAR UNLESS OTHERWISE SPECIFIED </small>	<small> APPROVALS DR. S. C. W. </small>	<small> DATE 9/15/16 </small>
<small> CHL </small>		
<small> INC. INC. </small>		
<small> MIC. INC. </small>		

CC345R1-GN

DATE SET	DATE NO.		DS
SCALE	1:24	SHEET	1 OF 1