

SECTION 15732 - PACKAGED ROOFTOP AIR-CONDITIONING UNITS

PART 1 - GENERAL

1.1 SECTION REQUIREMENTS

- A. Submittals: Product Data and Shop Drawings.
- B. Comply with ASHRAE 15.
- C. EER: Equal to or greater than prescribed by the energy code adopted by the Authority Having Jurisdiction.
- D. Warranties: Submit a written warranty, signed by the manufacturer, agreeing to the repair or replacement of components that fail within 5 years of Substantial Completion.

PART 2 - PRODUCTS

2.1 PACKAGED UNITS, 5 TO 20 TONS

- A. Factory assembled and tested, consisting of compressors, condensers, evaporator coils, condenser and evaporator fans, refrigeration and temperature controls, filters, and dampers.
 - 1. Refer to Rooftop Heating/Cooling Unit Schedule on drawing M600 for capacities, and manufacturers.
 - 2. Evaporator Fans: Belt or direct driven, forward curved centrifugal.
 - 3. Exhaust/Relief Fans: Direct drive, forward curved centrifugal or propeller.
 - 4. Condenser Fans: Direct drive propeller.
 - 5. Refrigerant Coils: Aluminum fins and copper coil.
 - 6. Compressors: Serviceable hermetic or fully hermetic, with safety controls, hot gas bypass, and timed off controls.
 - 7. Heat Exchangers: Gas fired, with gas controls, electronic ignition, high limit cutout, and forced draft forcing switch.
 - 8. Economizer controls (Comparative Enthalpy, 100% capacity).
 - 9. Smoke Detectors: Photoelectric in supply and/or return as called for in schedule on sheet M600.
 - 10. Operating Controls: Two stage heating and two stage cooling on units 7-1/2 tons and over.
 - 11. Roof curb.
 - 12. Control Wiring from T-stat to rooftop unit: Shall be 18ga / 7 conductor, rated for plenum applications.
 - 13. Control Wiring from T-stat to remote sensor: Shall be a separate 18ga / 2 conductor shielded, rated for plenum applications.

PART 3 - EXECUTION

3.1 INSTALLATION

- A. Install units level and plumb and firmly anchored.
- B. Connect gas piping to burner with pipe same size as gas train inlet, and provide union with sufficient clearance for burner removal and service.
- C. Install ducts to termination in roof mounting frames. Terminate ducts through roof structure.
- D. Connect units to wiring systems and to ground.

END OF SECTION 15732

SECTION 15810 - DUCTS AND ACCESSORIES

PART 1 - GENERAL

1.1 SECTION REQUIREMENTS

- A. Submittals: Product Data for fire and smoke dampers.
- B. Comply with NFPA 90A for systems serving spaces more than 25,000 cu. ft. in volume or building Types II, IV, and V construction more than 3 stories in height.
- C. Comply with NFPA 90B for systems serving spaces in 1 or 2 family dwellings or serving spaces less than 25,000 cu. ft..
- D. Comply with NFPA 96, "Ventilation Control and Fire Protection of Commercial Cooking Operations," for kitchen hood ducts.
- E. Comply with UL 181 and UL 181A for ducts and closures.
- F. Testing, Adjusting, and Balancing Agency Qualifications: AABC certified (to be furnished by Tenant).

PART 2 - PRODUCTS

2.1 DUCTS

- A. Spiral Duct: Spiral Lock Seam, without insulation, G90 galvanized finish, ASTM A-653/924
 - 1. Basis of Design Manufacturers: Lindab SPIROsafe, alternates to the basis of design must be submitted for review.
 - 2. Fittings: Factory produced standing seam construction with internal sealing. Fittings with a major axis of 36" or smaller shall be 20 gauge. Fittings with a major axis of 37"-48" shall be 18 gauge.
- B. Galvanized Steel Sheet: Forming steel, ASTM A 653/653M, G90 coating designation.
- C. Duct Liner: ASTM C 1071, Type II, with an airstream surface coated with a temperature resistant coating.
 - Thickness: 1-1/2 inch, R-value : 8.
 - 1. Adhesive: ASTM C 916, Type I.
 - 2. Mechanical Fasteners: Galvanized steel pin, length as required to penetrate liner plus a 1/8 inch projection maximum into the airstream.
- D. Joint and Seam Tape: Comply with UL 181A.
- E. Joint and Seam Sealant: Comply with UL 181A.
- F. Rectangular Metal Duct Fabrication: Comply with SMACNA's "HVAC Duct Construction Standard" for metal thickness, reinforcing types and intervals, tie rod applications, and joint types and intervals.

2.2 ACCESSORIES

- A. Volume-Control Dampers: Factory fabricated volume control dampers, complete with required hardware and accessories. Single blade and multiple opposed blade, standard leakage rating, and suitable for horizontal or vertical applications.
- B. Fire Dampers: Factory-fabricated fire dampers, complete with required hardware and accessories. UL labeled according to UL 555, "Fire Dampers".
- C. Flexible Connectors: Flame retardant or noncombustible fabrics, coatings, and adhesives complying with UL 181, Class 1.
- D. Flexible Ducts: Factory fabricated, insulated, round duct, with an outer jacket enclosing 2 inch thick, glass fiber insulation, R-value: 6.0, around a continuous inner liner.

PART 3 - EXECUTION

3.1 INSTALLATION

- A. Duct System Pressure Class: Construct and install each duct system with 2 inch positive and negative duct pressure classifications.
- B. Conceal ducts from view in finished and occupied spaces. Except where noted as exposed.
- C. Avoid passing through electrical equipment spaces and enclosures.
- D. Support and connect metal ducts according to SMACNA's "HVAC Duct Construction Standard".
- E. Install duct accessories according to applicable portions of details of construction as shown in SMACNA standards.
- F. Install liner and/or insulation on ductwork per the material schedule on sheet M010.
- G. Install volume control dampers in lined duct with methods to avoid damage to liner and to avoid erosion of duct liner.
- H. Install fire and smoke dampers according to manufacturer's UL approved written instructions.
- I. Install fusible links in fire dampers.
- J. Provide saddle taps at tees for exposed ductwork.

3.2 TESTING, ADJUSTING, AND BALANCING

- A. The Tenant will supply an independent balance agent to to balance and adjust the HVAC installation. The balance agent will be responsible for any pulley or belt changes required.
- B. The GC is to have trained staffed available during the balancing to correct issues noted by the balance agent.
- C. The balance agent is to balance airflow within distribution systems, including submains, branches, and terminals to indicated quantities +/- 10%. The hood exhaust system shall be balanced to a tolerance of -0+10% and the make-up air system to a tolerance of -10+0%.
- D. The balance agent is to supply a copy of the balance report to the Tenant, engineer and general contractor for review.

END OF SECTION 15810

SECTION 15855 - DIFFUSERS, REGISTERS, AND GRILLES

PART 1 - GENERAL

1.1 SECTION REQUIREMENTS

- A. Submittals: None.

PART 2 - PRODUCTS

2.1 OUTLETS AND INLETS

- A. All air terminal devices:
 - 1. Refer to Grills, Registers, and Diffusers Schedule for equipment schedule
 - 2. Manufacturer: As scheduled (NO SUBSTITUTIONS)
 - 3. Material: As scheduled.
 - 4. Finish: As scheduled.
 - 5. Mounting: As scheduled.

PART 3 - EXECUTION

3.1 INSTALLATION

- A. Coordinate location and installation with duct installation and installation of other ceiling and wall mounted items.
- B. Locate ceiling diffusers, registers, and grilles, as indicated on the architectural "reflected ceiling plans." Unless otherwise indicated, locate units in center of acoustical ceiling panels.

END OF SECTION 15855

HVAC GENERAL NOTES

- A. GENERAL NOTES APPLY TO HVAC SHEETS.
- B. WORK SHALL COMPLY WITH STATE AND LOCAL CODE REQUIREMENTS AS APPROVED AND AMENDED BY THE AUTHORITY HAVING JURISDICTION, INCLUDING APPLICABLE SECTIONS OF NFPA, THE MECHANICAL CODE, AND ANY INTERIM AMENDMENTS AT THE TIME OF THE PROPOSAL. PURCHASE PERMITS ASSOCIATED WITH THE WORK. OBTAIN INSPECTIONS REQUIRED BY CODE. SEE ARCHITECTURAL SHEETS FOR THE PREVAILING CODES.
- C. CONTRACTOR AND SUBCONTRACTORS SHALL REVIEW A COMPLETE SET OF THE CONSTRUCTION DOCUMENTS.
- D. COORDINATE WORK WITH THE WORK OF OTHER TRADES, EQUIPMENT FURNISHED BY OTHERS, REQUIREMENTS OF THE OWNER, AND OF THE EXISTING CONDITIONS AT THE PROJECT SITE.
- E. DRAWINGS FOR THE MECHANICAL WORK ARE DIAGRAMMATIC, SHOWING THE GENERAL LOCATION, TYPE, LAYOUT, AND EQUIPMENT REQUIRED. THE DRAWING SHALL NOT BE SCALED FOR EXACT MEASUREMENTS, REFER TO ARCHITECTURAL DRAWINGS FOR DIMENSIONS. REFER TO MANUFACTURER'S STANDARD INSTALLATION DRAWINGS FOR EQUIPMENT CONNECTIONS AND INSTALLATION REQUIREMENTS. PROVIDE DUCTWORK, CONNECTIONS, OFFSETS, ACCESSORIES, AND MATERIALS NECESSARY FOR A COMPLETE SYSTEM.
- F. DUCT DIMENSIONS ON PLANS INDICATE DIMENSIONS OF INTERNAL FREE AREA.
- G. PERFORATED CEILING DIFFUSERS SHALL BE 4-WAY UNLESS NOTED OTHERWISE.
- H. COORDINATE ROOF WORK WITH THE OWNER'S CONSTRUCTION MANAGER PRIOR TO CONSTRUCTION.
- I. UNLESS NOTED OTHERWISE RECTANGULAR DUCT ELBOWS GREATER THAN 45° SHALL BE MITERED ELBOWS WITH DOUBLE-THICKNESS TURNING VANES AND RECTANGULAR DUCT ELBOWS 45° OR LESS SHALL BE RADIUSSED ELBOWS WITH AN INSIDE RADIUS OF AT LEAST 1/2 THE WIDTH OF THE DUCT.
- J. REPLACE AIR FILTERS WITH NEW, CLEAN MERV 8 AIR FILTERS AT TURNOVER.
- K. THE TERM "FURNISH" MEANS SUPPLY AND DELIVER TO THE PROJECT SITE, READY FOR UNLOADING, UNPACKING, ASSEMBLY, INSTALLATION, AND SIMILAR OPERATIONS. THE TERM "INSTALL" DESCRIBES THE OPERATIONS AT THE PROJECT SITE INCLUDING THE ACTUAL UNLOADING, UNPACKING, ASSEMBLY, ERECTING, PLACING, ANCHORING, APPLYING, WORKING TO DIMENSION, FINISHING, CURING, PROTECTING, CLEANING, AND SIMILAR OPERATIONS. THE TERM "PROVIDE" MEANS TO FURNISH AND INSTALL, COMPLETE AND READY FOR THE INTENDED USE.
- L. PROVIDE LABELING CALLED FOR IN THE HVAC DRAWINGS USING ENGRAVED PHENOLIC PLATES.
- M. PROVIDE P3000 12 GA. UNISTRUT WITH PG FINISH FOR DUCT SUPPORTS AND OTHER UNISTRUT IN AREAS EXPOSED TO VIEW. SLOTTED UNISTRUT AND OTHER UNISTRUT WITH HOLES IS NOT ACCEPTABLE.

HVAC MATERIAL SCHEDULE

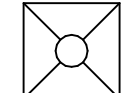
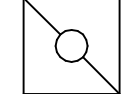
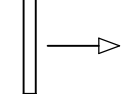
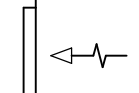

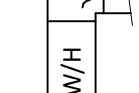
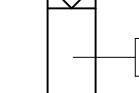
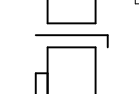
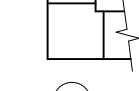
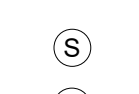
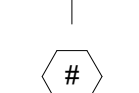
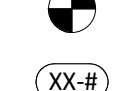

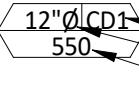
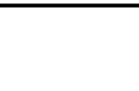
	APPLICATION	ALLOWABLE MATERIAL
DUCT	CONCEALED, GENERAL EXHAUST	RECT. OR ROUND AS SHOWN
	CONCEALED, RETURN	RECT. OR ROUND AS SHOWN, LINED OR INSULATED
	CONCEALED, SUPPLY	RECT. OR ROUND AS SHOWN, LINED OR INSULATED
	CONCEALED, TYPE I HOOD EXHAUST	RECTANGULAR 16 GA. BLACK IRON W/ WRAP OR UL 1978 FACTORY-MANUFACTURED DUCT W/ WRAP (SUBMIT SHOP DRAWINGS FOR FACTORY-MANUFACTURED DUCT PRIOR TO ORDERING FOR APPROVAL)
	EXPOSED GENERAL EXHAUST	RECTANGULAR, NO EXPOSED DUCT-SEALING MASTIC
	EXPOSED RETURN	RECTANGULAR, NO EXPOSED DUCT-SEALING MASTIC
	EXPOSED SUPPLY	RECT. LINED OR ROUND AS SHOWN, NO EXPOSED DUCT-SEALING MASTIC

HVAC ABBREVIATIONS

- (E) EXISTING
- ABV ABOVE
- ADA AMERICANS WITH DISABILITIES ACT
- AFF ABOVE FINISHED FLOOR
- AFG ABOVE FINISHED GRADE
- AHJ AUTHORITY HAVING JURISDICTION
- BFF BELOW FINISHED FLOOR
- BFG BELOW FINISHED GRADE
- BOH BACK OF HOUSE
- CLG CEILING
- CTE CONNECT TO EXISTING
- DN DOWN
- EXT'G EXISTING
- FLR FLOOR
- FOH FRONT OF HOUSE
- GYP GYPSUM BOARD
- NTS NOT TO SCALE
- O/H OVERHEAD
- OBD OPPOSED BLADE DAMPER
- TYP TYPICAL
- U/G UNDERGROUND
- UNO UNLESS NOTED OTHERWISE
- VFD VARIABLE FREQUENCY DRIVE
- VSC VARIABLE SPEED CONTROLLER
- W/ WITH
- WIC WALK-IN COOLER

- C02AS TENANT'S CO2 ALARM SUPPLIER
- GC GENERAL CONTRACTOR
- HES TENANT'S HVAC EQUIPMENT SUPPLIER
- HS TENANT'S HOOD SUPPLIER
- KES TENANT'S KITCHEN EQUIPMENT SUPPLIER
- LL LANDLORD
- MSS TENANT'S MUSIC SYSTEMS SUPPLIER
- SPS TENANT'S SODA POP SUPPLIER
- TAB TENANT'S TEST AND BALANCE VENDOR
- TCC TENANT'S CABLING CONTRACTOR
- TDC TENANT'S DUCT CLEANER
- TEMS TENANT'S ENERGY MANAGEMENT SYSTEM SUPPLIER
- TLS TENANT'S LIGHT/LAMP SUPPLIER
- TMB TENANT'S MENU BOARD SUPPLIER
- TMS TENANT'S MILLWORK SUPPLIER
- TP TENANT'S PHONE SUPPLIER
- TPS TENANT'S PANELBOARD SUPPLIER
- TRS TENANT'S RAILING SUPPLIER
- TSV TENANT'S SIGN VENDOR
- TUV TENANT'S UV SNAITIZER SUPPLIER
- WCS TENANT'S WALK-IN COOLER SUPPLIER
- WHS TENANT'S WATER HEATER SUPPLIER

HVAC SYMBOLS

-  CEILING DIFFUSER
-  CEILING-MOUNTED RETURN OR EXHAUST REGISTER
-  SUPPLY REGISTER
-  RETURN GRILLE
-  FLEXIBLE DUCT
-  MITERED CORNER WITH TURNING VANES
-  DUCTWORK INTERNAL FREE DIMENSIONS (WIDTH/HEIGHT) RECTANGULAR TO ROUND DUCT TRANSITION
-  DUCT-MOUNTED SMOKE DETECTOR
-  MOTOR-OPERATED DAMPER
-  MANUAL VOLUME DAMPER
-  GREASE DUCT CLEANOUT
-  MITERED CORNER WITHOUT TURNING VANES
-  GRIDPOINT THERMOSTAT
-  GRIDPOINT ZONE SENSOR MODULE
-  GRIDPOINT SUPPLY PROBE
- PLAN NOTE: SEE PLAN NOTES LISTED ON THE SAME SHEET FOR NOTE MEANING
- CONNECT TO EXISTING
- EQUIPMENT TAG: SEE EQUIPMENT SCHEDULE ON SHEET M600 FOR EQUIPMENT INFORMATION
- AUDIO/VISUAL REMOTE SMOKE DETECTOR ANNUNCIATOR WITH REMOTE KEY OPERATED RESET
- GRILL, REGISTER, OR DIFFUSER TAG: TAG NECK SIZE AIRFLOW [CFM]

Consultant:



www.greenbergfarrow.com

1230 Peachtree Street, NE
Suite 2900 Atlanta, GA 30309
t: 404 601 4000

COPYRIGHT 2022
THIS DRAWING IS AN INSTRUMENT OF SERVICE AND AS SUCH REMAINS THE PROPERTY OF CHIPOTLE MEXICAN GRILL, INC.. PERMISSION FOR USE OF THIS DOCUMENT IS LIMITED AND CAN BE EXTENDED ONLY BY WRITTEN AGREEMENT WITH CHIPOTLE MEXICAN GRILL, INC..



CHIPOTLE MEXICAN GRILL, INC.
PO BOX 182566
COLUMBUS, OH 43218-2566
TELEPHONE: (614) 318-2482
INTERNET: WWW.CHIPOTLE.COM

STORE NO.: 5191

8790 SACRAMENTO DR,
ALEXANDRIA,
VA 22309

Issue Record:

REV.	DATE	DESCRIPTION
	01/12/2024	LANDLORD SET
	02/05/2024	PERMIT SET

Engineer

Ross Eugene Waters.
License No. 0402065153

Drawn: JSP
Checked: DK

Project No.
20231136.0

Contents:

HVAC SPECIFICATIONS

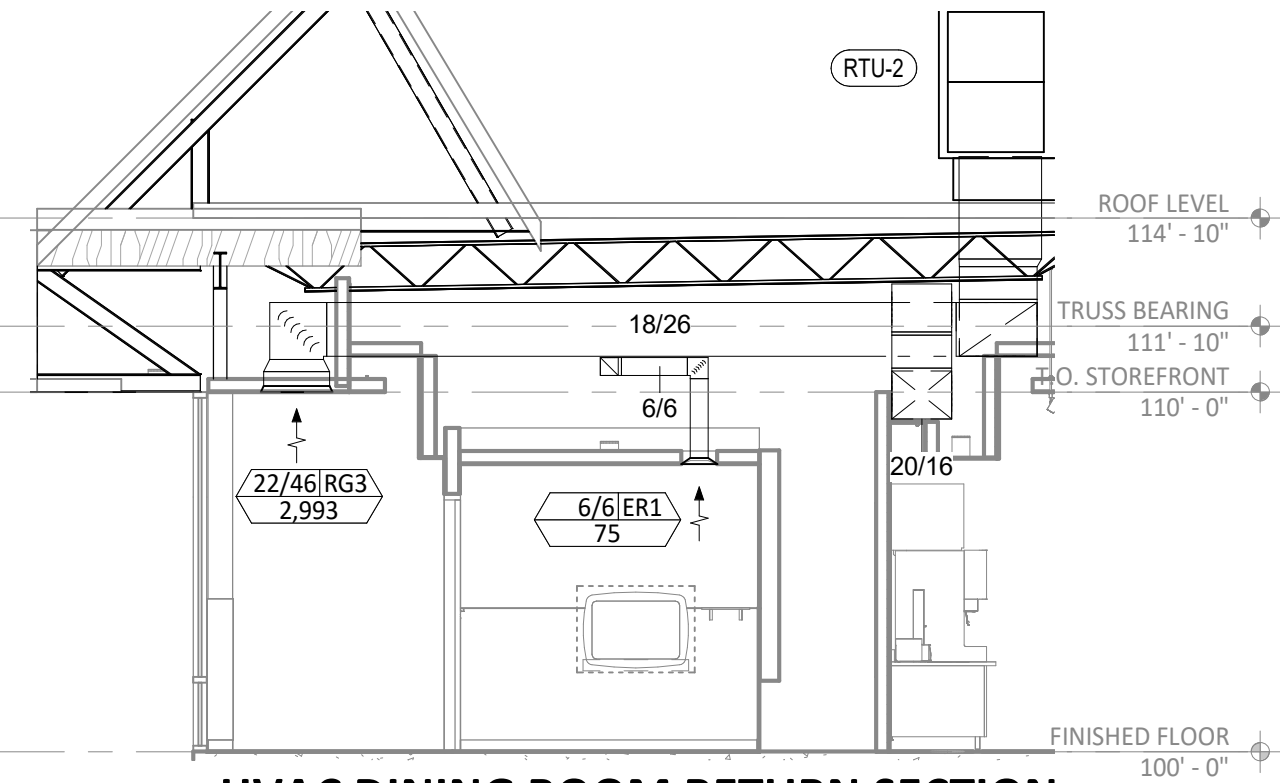
M010

HVAC PLAN NOTES

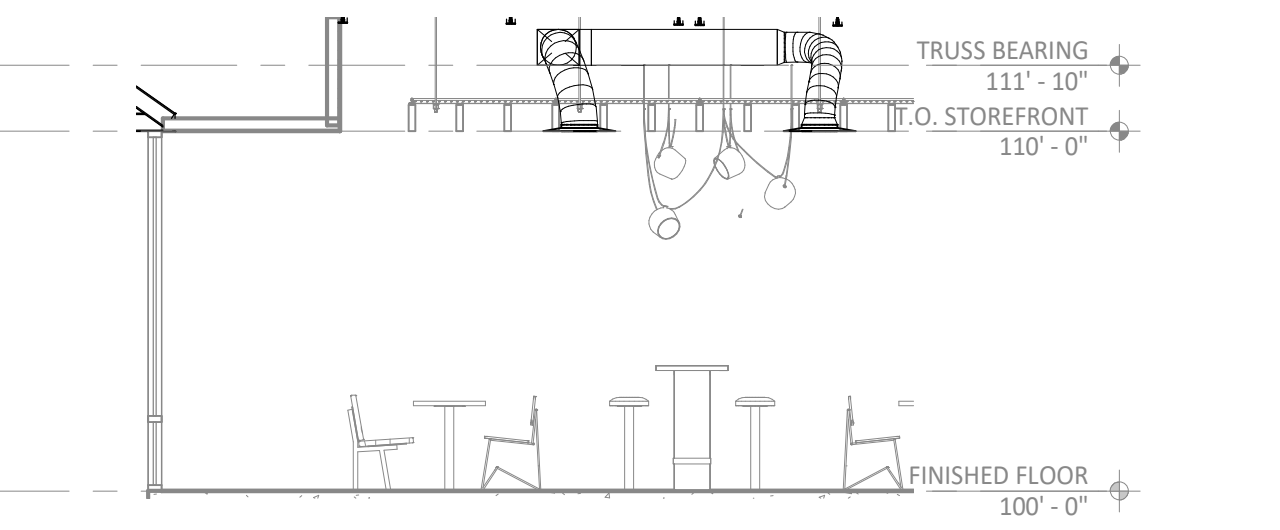
- SEE ARCHITECTURAL REFLECTED CEILING PLAN FOR CEILING MOUNTED EQUIPMENT LOCATION. TYPICAL.
- PAINT DUCTWORK VISIBLE THROUGH DINING ROOM SUPPLY REGISTERS BLACK. TYPICAL.
- PENETRATIONS THROUGH SHEAR WALL SHALL BE LIMITED TO 10" DIAMETER (OR A GROUP OF PENETRATIONS ALL CONTAINED WITHIN 10" DIAMETER). IF LARGER PENETRATIONS OR GROUPS OF PENETRATIONS ARE REQUIRED COORDINATE WITH STRUCTURAL ENGINEER FOR APPROPRIATE BRACING. SEE STRUCTURAL DRAWINGS FOR SHEAR WALL LOCATION.
- 26/14 DUCT UP FOR TRANSITION TO RTU-1 RETURN CONNECTION IN ROOF CURB. RTU-1 SHALL HAVE AN INTEGRAL SMOKE DETECTOR MOUNTED IN THE RETURN AIR STREAM. INTERLOCK SMOKE DETECTOR TO RTU-1 OPERATION.
- 26/18 DUCT UP FOR TRANSITION TO RTU-2 RETURN CONNECTION IN ROOF CURB. RTU-2 SHALL HAVE AN INTEGRAL SMOKE DETECTOR MOUNTED IN THE RETURN AIR STREAM. INTERLOCK SMOKE DETECTOR TO RTU-2 OPERATION.
- 26/14 DUCT UP FROM BUILDING SUPPLY THROUGH ROOF. TRANSITION TO RTU-1 SUPPLY CONNECTION IN ROOF CURB.
- 30/16 DUCT UP FROM BUILDING SUPPLY TO RTU-2 SUPPLY CONNECTION. TRANSITION IN ROOF CURB.
- 14/14 DUCT UP THROUGH ROOF. TRANSITION TO MAU-1 SUPPLY CONNECTION IN ROOF CURB.
- 16/16 DUCT UP FROM HOOD THROUGH ROOF TO EF-1 COMPLIANT WITH NFPA 96. PROVIDE RADIUS ELBOWS WITH AN INSIDE RADIUS OF 0.5W AT ELBOWS IN GREASE DUCT.
- 8/6 DUCT UP THROUGH ROOF TO EF-2.
- 28/6 DUCT DOWN TO MAKEUP AIR PSP DUCT CONNECTION. TRANSITION TO SUPPLY PLENUM OPENING SIZE. TYPICAL FOR 3.
- 8" DIA. DUCT DOWN TO AC PSP DUCT CONNECTION. TRANSITION TO SUPPLY PLENUM OPENING SIZE. TYPICAL. CAP UNUSED DUCT CONNECTIONS.
- INSTALL GRIDPOINT THERMOSTATS FURNISHED BY TEMS FOR RTU-1 AND RTU-2 AT THIS LOCATION AT 48" AFF. COORDINATE WITH ELECTRICAL SWITCHING IN THIS AREA. PROVIDE WIRING AS SHOWN IN DETAIL 8/E710.
- INSTALL GRIDPOINT ZONE SENSOR MODULE FURNISHED BY TEMS FOR RTU-1 AT THIS LOCATION 72" AFF DIRECTLY TO WALL (NO JUNCTION BOX). COORDINATE LOCATION WITH EQUIPMENT. PROVIDE WIRING AS SHOWN IN DETAIL 8/E710.
- INSTALL GRIDPOINT ZONE SENSOR MODULE FURNISHED BY TEMS FOR RTU-2 AT THIS LOCATION 66" AFF DIRECTLY TO WALL (NO JUNCTION BOX). COORDINATE LOCATION WITH EQUIPMENT. PROVIDE WIRING AS SHOWN IN DETAIL 8/E710.
- INSTALL GRIDPOINT SUPPLY PROBE FURNISHED BY TEMS FOR RTU-1 IN THE SUPPLY DUCTWORK UPSTREAM FROM THE FIRST BRANCH CONNECTION. PROVIDE WIRING AS SHOWN IN DETAIL 8/E710.
- INSTALL GRIDPOINT SUPPLY PROBE FURNISHED BY TEMS FOR RTU-2 IN THE SUPPLY DUCTWORK UPSTREAM FROM THE FIRST BRANCH CONNECTION. PROVIDE WIRING AS SHOWN IN DETAIL 8/E710.
- INSTALL REMOTE TEMPERATURE SENSOR FOR HOOD HD-1 AT THIS LOCATION 72" AFF. COORDINATE LOCATION WITH EQUIPMENT. PROVIDE (2) #18 G. THERMISTOR CABLE FROM TEMPERATURE SENSOR TO HOOD CONTROL PANEL.
- INSTALL KITCHEN HOOD, HD-1. SUPPORT HOOD PER MANUFACTURER'S INSTALLATION INSTRUCTIONS AND AS DETAILED IN THE ARCHITECTURAL AND STRUCTURAL DRAWINGS. INSTALL HOOD ACCORDING TO THE REQUIREMENTS OF ITS LISTING, IN COMPLIANCE WITH NFPA 96, THE BUILDING CODE, AND AUTHORITIES HAVING JURISDICTION. HOOD SHALL HAVE AN INTEGRAL DUCT COLLAR TEMPERATURE SENSOR TO AUTOMATICALLY ENERGIZE THE EXHAUST AND MAKEUP AIR FANS IF COOKING TEMPERATURES ARE DETECTED. EXHAUST DUCT SYSTEM TO BE WELDED OR FACTORY-MANUFACTURED WATER AND AIR TIGHT. INSTALL CLEANOUTS PER CODE AND AS SHOWN. INSTALL HOOD PER DETAILS 2, 4, AND 9/M700. CHIPOTLE WILL PROVIDE AN INDEPENDENT TESTING AGENCY FOR TESTING THE INTEGRITY OF THE GREASE DUCT SYSTEM.

HVAC PLAN NOTES

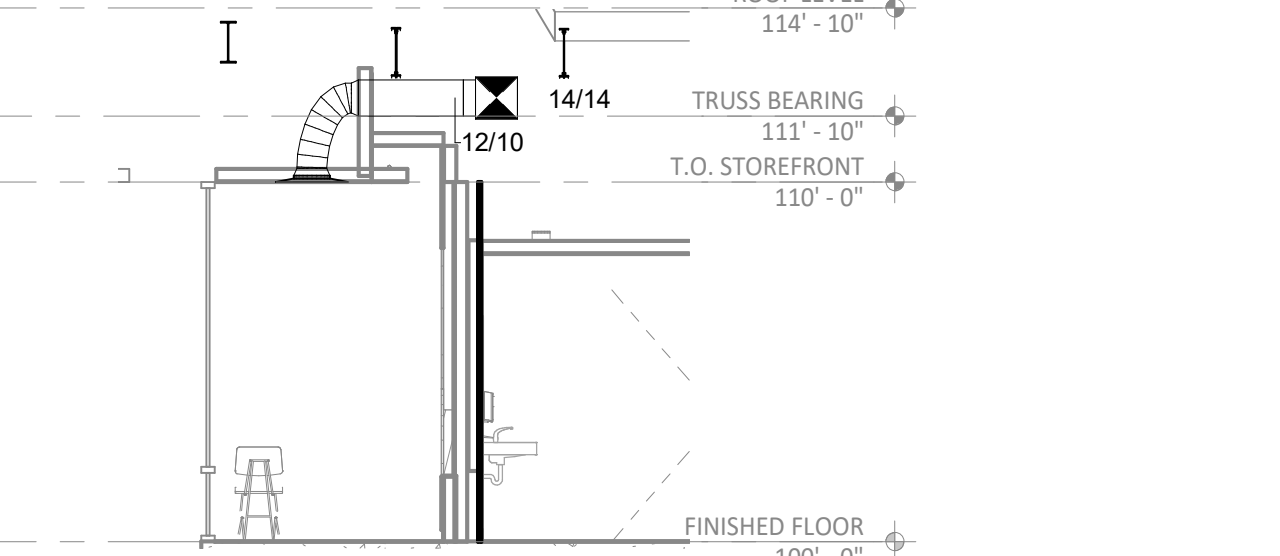
- INSTALL REMOTE CONDENSING UNIT FOR WALK-IN COOLER ON ROOF AS DETAILED IN THE ARCHITECTURAL AND STRUCTURAL DRAWINGS. INSTALL REFRIGERANT LINE SET, THERMOSTATIC EXPANSION VALVE, SOLENOID VALVE, TEMPERATURE CONTROL, SIGHT GLASS, FILTER DRIER, PRESSURE CONTROL, LOW AMBIENT CONTROLS, AND WEATHERPROOF HOUSING. TRAP AND SLOPE REFRIGERANT LINES PER MANUFACTURER'S RECOMMENDATIONS. INSTALLATION SHALL COMPLY WITH ASHRAE/ANSI STANDARD 15. INSTALL THE REFRIGERANT LINE SET UNDER THE ROOF DECK TO WITHIN 3' OF THE CONDENSING UNIT. CUT 2-1/2" HOLE IN WALK-IN COOLER ROOF FOR REFRIGERANT LINE SET AND SEAL PER THE COOLER MANUFACTURER'S INSTALLATION INSTRUCTIONS AFTER LINE SET IS INSTALLED.
- INSTALL REMOTE CONDENSER FOR ICE MACHINE ON ROOF AS DETAILED IN THE ARCHITECTURAL AND STRUCTURAL DRAWINGS. INSTALL REFRIGERANT LINE SET, THERMOSTATIC EXPANSION VALVE, SOLENOID VALVE, TEMPERATURE CONTROL, SIGHT GLASS, FILTER DRIER, PRESSURE CONTROL, LOW AMBIENT CONTROLS, AND WEATHERPROOF HOUSING. TRAP AND SLOPE REFRIGERANT LINES PER MANUFACTURER'S RECOMMENDATIONS. SEAL PIPING PENETRATIONS THROUGH ROOF. INSTALLATION SHALL COMPLY WITH ASHRAE/ANSI STANDARD 15. INSTALL THE REFRIGERANT LINE SET UNDER THE ROOF DECK TO WITHIN 3' OF THE REMOTE CONDENSER. IF REFRIGERANT PIPING TO ICE MAKER IS EXPOSED TO PUBLIC VIEW CONCEAL WITHIN A STAINLESS STEEL SHROUD AS SHOWN IN THE ARCHITECTURAL DRAWINGS.
- INSTALL ROOFTOP EQUIPMENT PER MANUFACTURER'S INSTALLATION INSTRUCTIONS AND AS DETAILED IN THE ARCHITECTURAL AND STRUCTURAL DRAWINGS.
- INSTALL EXHAUST FAN EF-1 PER DETAIL 5/M700 AND AS DETAILED IN THE ARCHITECTURAL AND STRUCTURAL DRAWINGS. INSTALL GREASE VIROGUARD SYSTEM FURNISHED BY CHIPOTLE ON EXHAUST FAN, EF-1.
- PROVIDE SUPPLY DIFFUSER CONNECTION TO SUPPLY SYSTEM PER DETAIL 1/M700. TYPICAL.
- PROVIDE AUDIO/VISUAL REMOTE SMOKE DETECTOR ANNUNCIATOR WITH REMOTE KEY OPERATED RESET. WIRE A UNIT BACK TO EACH SMOKE DETECTOR. MOUNT UNIT 60" AFF. TYPICAL.
- INSTALL REME HALO AIR PURIFIER FURNISHED BY TUV IN RTU PER DETAIL 6/M700. SEE ELECTRICAL DRAWINGS FOR POWER CONNECTION INFORMATION. INSTALL UV WARNING STICKERS ON FACE OF ENCLOSURE PER DETAIL AND ON ANY RTU ACCESS DOOR(S) THROUGH WHICH THE REME HALO WOULD BE VISIBLE IF OPENED.
- MAINTAIN 10' CLEARANCE BETWEEN WATER HEATER FLUE TERMINATION AND OUTSIDE AIR INTAKES. MAINTAIN 10' CLEARANCE BETWEEN WATER HEATER COMBUSTION AIR INTAKE AND EXHAUST FAN EF-1 DISCHARGE. SEE PLUMBING DRAWINGS FOR MORE INFORMATION ON WATER HEATER FLUE AND COMBUSTION AIR TERMINATIONS.
- ADJUST SUPPLY REGISTERS SO THAT SUPPLY AIR HITS WALL ON OPPOSITE SIDE OF ROOM AT APPROXIMATELY 7' AFF WITH NO DRAFTS FELT IN THE DINING ROOM.
- CONFIGURE DIFFUSER IN FIELD FOR 3-WAY DISCHARGE. BLOCK SIDE OF DIFFUSER CLOSEST TO EXTERIOR WALL.



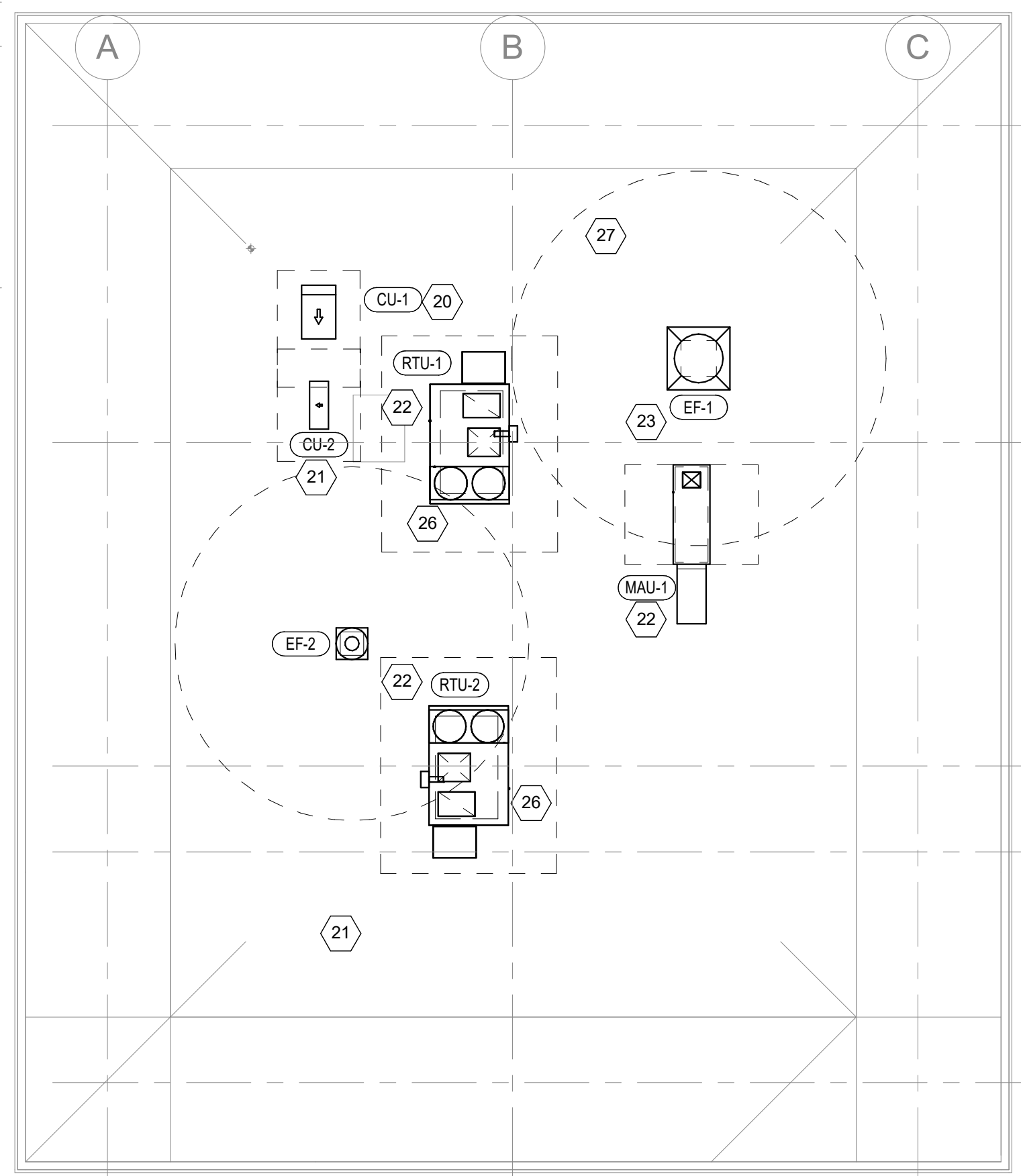
6 HVAC DINING ROOM RETURN SECTION
3/16" = 1'-0"



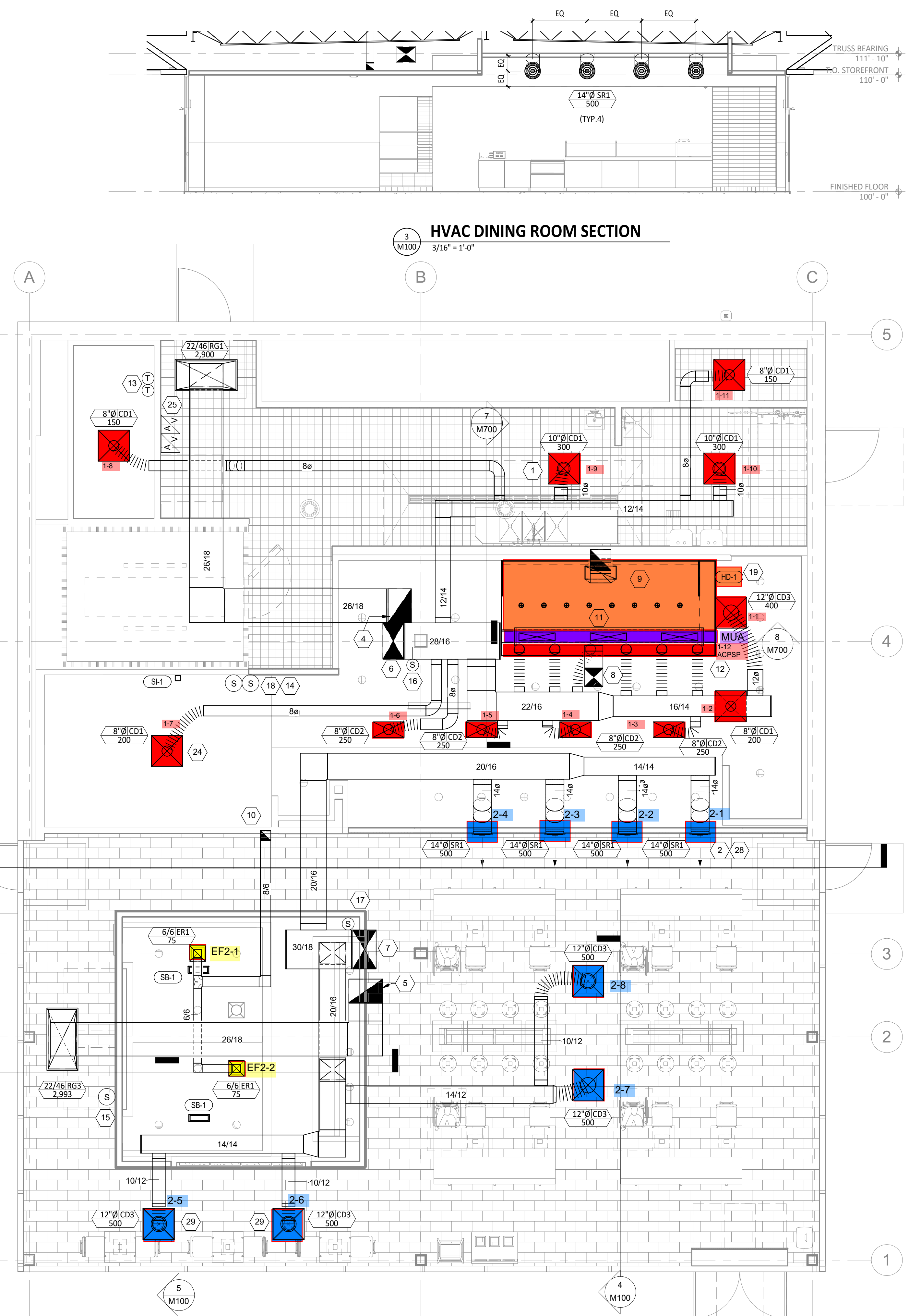
4 HVAC DINING ROOM SECTION
3/16" = 1'-0"



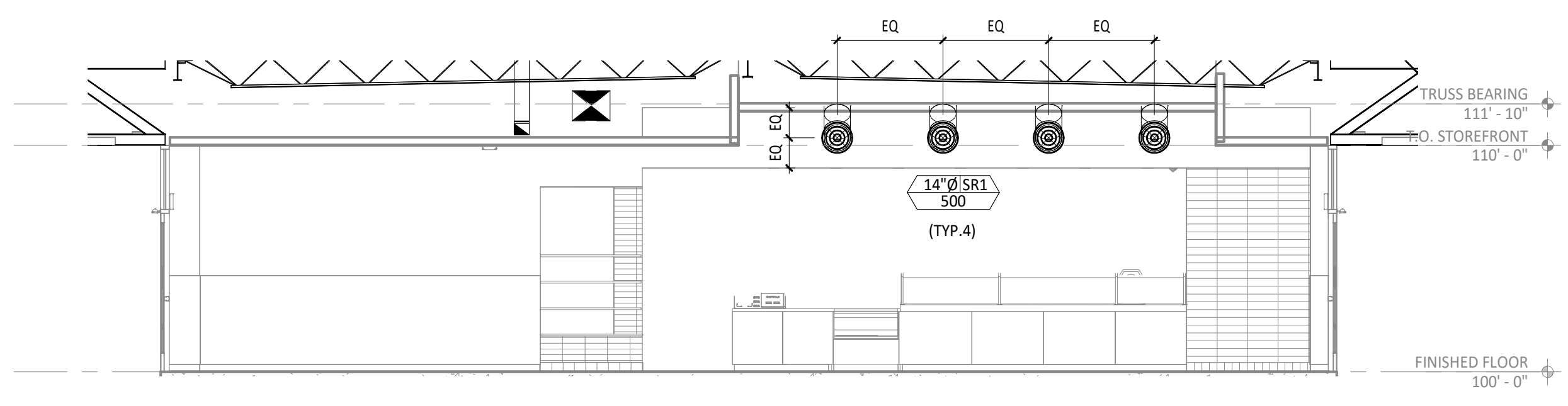
5 HVAC DINING ROOM SECTION
3/16" = 1'-0"



2 HVAC ROOF PLAN
1/8" = 1'-0"



1 HVAC FLOOR PLAN
1/4" = 1'-0"



3 HVAC DINING ROOM SECTION
3/16" = 1'-0"

Consultant:

 www.greenbergfarrow.com
 1230 Peachtree Street, NE
 Suite 2900 Atlanta, GA 30309
 t: 404 601 4000

COPYRIGHT 2022
 THIS DRAWING IS AN INSTRUMENT OF SERVICE AND AS SUCH REMAINS THE PROPERTY OF CHIPOTLE MEXICAN GRILL, INC.. PERMISSION FOR USE OF THIS DOCUMENT IS LIMITED AND CAN BE EXTENDED ONLY BY WRITTEN AGREEMENT WITH CHIPOTLE MEXICAN GRILL, INC..

 CHIPOTLE MEXICAN GRILL, INC.
 PO BOX 182556
 COLUMBUS, OH 43218-2566
 TELEPHONE: (614) 318-2482
 INTERNET: WWW.CHIPOTLE.COM

STORE NO.: 5191
 8790 SACRAMENTO DR,
 ALEXANDRIA,
 VA 22309

Issue Record:

REV.	DATE	DESCRIPTION
01/12/2024	02/05/2024	LANDLORD SET PERMIT SET
1	03/20/2024	REVISION 1

Engineer

Ross Eugene Waters.
 License No. 0402065153

Drawn: ISP
 Checked: DK

Project No.
 20231136.0

Contents:
 HVAC PLAN

M100

FOR QUESTIONS CALL THE PATENT NUMBERS
 Highmod Group
 AC-FIP LIMITED STATED - US PATENT #63809 B2
 AC-FIP MEX. CANADA - CA PATENT 252335
 AC-FIP ISLAND CANADA - CA PATENT 252335
 EMAIL: CAPTIVE@HIGHMOD.COM

HOOD INFORMATION - JOB#6683466

HOOD TAG	MODEL	MANUFACTURER	LENGTH	WIDTH	HEIGHT	APPLIANCE	DESIGN	TOTAL LENGTH	TOTAL WIDTH	TOTAL HEIGHT	DIAM	SP	M/A	AC	CFM	CONSTRUCTION	NO	REV
1	3424	CAPTIVE/AC	82" W"	50" H"	24" D"	HEAVY	2000	200"	30"	24"	1200	1030	406	430	150	ALUM	ALONE	ALONE

HOOD INFORMATION - PARTS

HOOD TAG	TYPE	HT	HT/SH	LENGTH	EFFICIENCY # 7	HT	TYPE	WIRE	LOCATION	SIZE	TYPE	SIZE	QTY	REMARKS
1	CAPTIVE SOLID FILTER	6"	6"	18"	95%	0	LTS	3000	LN	12"x24"x24"	TANK FTS	4.8x4.8	1	1.000

HOOD OPTIONS

NO	TAG	POS	LENGTH	WIDTH	HEIGHT	REMARKS
1	Front	180"	12"	4"		

PERFORATED SUPPLY PLENUM(S)

NO	TAG	POS	LENGTH	WIDTH	HEIGHT	REMARKS
1	Front	180"	12"	4"		

ASSEMBLY INSTRUCTIONS

HANGING ANGLE MUST BE SUPPORTED WITH 1/2" - 13 TH GRADE 5 UNF X 1/2" LONG DOWEL RODS. HANGING ANGLE MUST BE SUPPORTED WITH 1/2" - 13 TH GRADE 5 UNF X 1/2" LONG DOWEL RODS. HANGING ANGLE MUST BE SUPPORTED WITH 1/2" - 13 TH GRADE 5 UNF X 1/2" LONG DOWEL RODS. HANGING ANGLE MUST BE SUPPORTED WITH 1/2" - 13 TH GRADE 5 UNF X 1/2" LONG DOWEL RODS.

REVISIONS

NO	DATE	DESCRIPTION
1	1/29/2024	ISSUED FOR PERMIT

CAPTIVE
 Highmod Group
 4401 Poplar Pike, Raleigh, NC 27617
 PHONE: (919) 875-1420
 FAX: (919) 875-1421
 EMAIL: CAPTIVE@HIGHMOD.COM

CHIPOTLE MOUNT VERNIN #5191
 ALEXANDRIA, VA, 22309

DATE: 1/29/2024
 DWG.#: 6583466
 DRAWN BY: JWB-40
 SCALE: 3/4" = 1'-0"
 MASTER DRAWING

SHEET NO. 1

SECTION VIEW - MODEL 664840-2-ACFSP-F

REVISIONS

NO	DATE	DESCRIPTION
1	1/29/2024	ISSUED FOR PERMIT

CAPTIVE
 Highmod Group
 4401 Poplar Pike, Raleigh, NC 27617
 PHONE: (919) 875-1420
 FAX: (919) 875-1421
 EMAIL: CAPTIVE@HIGHMOD.COM

CHIPOTLE MOUNT VERNIN #5191
 ALEXANDRIA, VA, 22309

DATE: 1/29/2024
 DWG.#: 6583466
 DRAWN BY: JWB-40
 SCALE: 3/4" = 1'-0"
 MASTER DRAWING

SHEET NO. 2

FIRE SYSTEM INFORMATION - JOB#6683466

SYSTEM TAG	TYPE	SIZE	MAX FP	SECTION	SYSTEM	LOCATION ON HOOD
1	SC ELECTRICAL	1250	40	SE	FIRE CABINET RIGHT	RIGHT, HOOD 1

FIRE SYSTEM PARTS LIST KEY

KEY NUMBER	PART DESCRIPTION	QTY	BY
1-0	TANK FIRE SUPPRESSION HOIST-DISCHARGE PROCEDURE UTILITY CABINET LABEL SHEET	1	0
1-1	TANK FIRE SUPPRESSION HOISTING GUIDE UTILITY CABINET LABEL SHEET	1	0
1-2	1/2" (38.1) 304-SS 1/2" DIA DUCT FIRE THERMOSTAT WITH 1/2" FIBER WIRE LEADS, NO. 1000 IN. TANK HOIST AT HOIST	1	0
1-3	1/2" (38.1) 304-SS 1/2" DIA DUCT FIRE THERMOSTAT WITH 1/2" FIBER WIRE LEADS, NO. 1000 IN. TANK HOIST AT HOIST	1	0
1-4	44000000 1/2" X 1/4" BRASS MESSING BUSHING	2	0
1-5	44000000 1/2" X 1/4" BRASS MESSING BUSHING	2	0
1-6	44000000 1/2" X 1/4" BRASS MESSING BUSHING	2	0
1-7	44000000 1/2" X 1/4" BRASS MESSING BUSHING	2	0
1-8	44000000 1/2" X 1/4" BRASS MESSING BUSHING	2	0
1-9	44000000 1/2" X 1/4" BRASS MESSING BUSHING	2	0
1-10	44000000 1/2" X 1/4" BRASS MESSING BUSHING	2	0
1-11	44000000 1/2" X 1/4" BRASS MESSING BUSHING	2	0
1-12	44000000 1/2" X 1/4" BRASS MESSING BUSHING	2	0
1-13	44000000 1/2" X 1/4" BRASS MESSING BUSHING	2	0
1-14	44000000 1/2" X 1/4" BRASS MESSING BUSHING	2	0
1-15	44000000 1/2" X 1/4" BRASS MESSING BUSHING	2	0
1-16	44000000 1/2" X 1/4" BRASS MESSING BUSHING	2	0
1-17	44000000 1/2" X 1/4" BRASS MESSING BUSHING	2	0
1-18	44000000 1/2" X 1/4" BRASS MESSING BUSHING	2	0
1-19	44000000 1/2" X 1/4" BRASS MESSING BUSHING	2	0
1-20	44000000 1/2" X 1/4" BRASS MESSING BUSHING	2	0
1-21	44000000 1/2" X 1/4" BRASS MESSING BUSHING	2	0
1-22	44000000 1/2" X 1/4" BRASS MESSING BUSHING	2	0
1-23	44000000 1/2" X 1/4" BRASS MESSING BUSHING	2	0
1-24	44000000 1/2" X 1/4" BRASS MESSING BUSHING	2	0
1-25	44000000 1/2" X 1/4" BRASS MESSING BUSHING	2	0
1-26	44000000 1/2" X 1/4" BRASS MESSING BUSHING	2	0
1-27	44000000 1/2" X 1/4" BRASS MESSING BUSHING	2	0
1-28	44000000 1/2" X 1/4" BRASS MESSING BUSHING	2	0
1-29	44000000 1/2" X 1/4" BRASS MESSING BUSHING	2	0
1-30	44000000 1/2" X 1/4" BRASS MESSING BUSHING	2	0
1-31	44000000 1/2" X 1/4" BRASS MESSING BUSHING	2	0
1-32	44000000 1/2" X 1/4" BRASS MESSING BUSHING	2	0
1-33	44000000 1/2" X 1/4" BRASS MESSING BUSHING	2	0
1-34	44000000 1/2" X 1/4" BRASS MESSING BUSHING	2	0
1-35	44000000 1/2" X 1/4" BRASS MESSING BUSHING	2	0
1-36	44000000 1/2" X 1/4" BRASS MESSING BUSHING	2	0
1-37	44000000 1/2" X 1/4" BRASS MESSING BUSHING	2	0
1-38	44000000 1/2" X 1/4" BRASS MESSING BUSHING	2	0
1-39	44000000 1/2" X 1/4" BRASS MESSING BUSHING	2	0
1-40	44000000 1/2" X 1/4" BRASS MESSING BUSHING	2	0
1-41	44000000 1/2" X 1/4" BRASS MESSING BUSHING	2	0
1-42	44000000 1/2" X 1/4" BRASS MESSING BUSHING	2	0
1-43	44000000 1/2" X 1/4" BRASS MESSING BUSHING	2	0
1-44	44000000 1/2" X 1/4" BRASS MESSING BUSHING	2	0
1-45	44000000 1/2" X 1/4" BRASS MESSING BUSHING	2	0
1-46	44000000 1/2" X 1/4" BRASS MESSING BUSHING	2	0
1-47	44000000 1/2" X 1/4" BRASS MESSING BUSHING	2	0
1-48	44000000 1/2" X 1/4" BRASS MESSING BUSHING	2	0
1-49	44000000 1/2" X 1/4" BRASS MESSING BUSHING	2	0
1-50	44000000 1/2" X 1/4" BRASS MESSING BUSHING	2	0
1-51	44000000 1/2" X 1/4" BRASS MESSING BUSHING	2	0
1-52	44000000 1/2" X 1/4" BRASS MESSING BUSHING	2	0
1-53	44000000 1/2" X 1/4" BRASS MESSING BUSHING	2	0
1-54	44000000 1/2" X 1/4" BRASS MESSING BUSHING	2	0
1-55	44000000 1/2" X 1/4" BRASS MESSING BUSHING	2	0
1-56	44000000 1/2" X 1/4" BRASS MESSING BUSHING	2	0
1-57	44000000 1/2" X 1/4" BRASS MESSING BUSHING	2	0
1-58	44000000 1/2" X 1/4" BRASS MESSING BUSHING	2	0
1-59	44000000 1/2" X 1/4" BRASS MESSING BUSHING	2	0
1-60	44000000 1/2" X 1/4" BRASS MESSING BUSHING	2	0
1-61	44000000 1/2" X 1/4" BRASS MESSING BUSHING	2	0
1-62	44000000 1/2" X 1/4" BRASS MESSING BUSHING	2	0
1-63	44000000 1/2" X 1/4" BRASS MESSING BUSHING	2	0
1-64	44000000 1/2" X 1/4" BRASS MESSING BUSHING	2	0
1-65	44000000 1/2" X 1/4" BRASS MESSING BUSHING	2	0
1-66	44000000 1/2" X 1/4" BRASS MESSING BUSHING	2	0
1-67	44000000 1/2" X 1/4" BRASS MESSING BUSHING	2	0
1-68	44000000 1/2" X 1/4" BRASS MESSING BUSHING	2	0
1-69	44000000 1/2" X 1/4" BRASS MESSING BUSHING	2	0
1-70	44000000 1/2" X 1/4" BRASS MESSING BUSHING	2	0
1-71	44000000 1/2" X 1/4" BRASS MESSING BUSHING	2	0
1-72	44000000 1/2" X 1/4" BRASS MESSING BUSHING	2	0
1-73	44000000 1/2" X 1/4" BRASS MESSING BUSHING	2	0
1-74	44000000 1/2" X 1/4" BRASS MESSING BUSHING	2	0
1-75	44000000 1/2" X 1/4" BRASS MESSING BUSHING	2	0
1-76	44000000 1/2" X 1/4" BRASS MESSING BUSHING	2	0
1-77	44000000 1/2" X 1/4" BRASS MESSING BUSHING	2	0
1-78	44000000 1/2" X 1/4" BRASS MESSING BUSHING	2	0
1-79	44000000 1/2" X 1/4" BRASS MESSING BUSHING	2	0
1-80	44000000 1/2" X 1/4" BRASS MESSING BUSHING	2	0
1-81	44000000 1/2" X 1/4" BRASS MESSING BUSHING	2	0
1-82	44000000 1/2" X 1/4" BRASS MESSING BUSHING	2	0
1-83	44000000 1/2" X 1/4" BRASS MESSING BUSHING	2	0
1-84	44000000 1/2" X 1/4" BRASS MESSING BUSHING	2	0
1-85	44000000 1/2" X 1/4" BRASS MESSING BUSHING	2	0
1-86	44000000 1/2" X 1/4" BRASS MESSING BUSHING	2	0
1-87	44000000 1/2" X 1/4" BRASS MESSING BUSHING	2	0
1-88	44000000 1/2" X 1/4" BRASS MESSING BUSHING	2	0
1-89	44000000 1/2" X 1/4" BRASS MESSING BUSHING	2	0
1-90	44000000 1/2" X 1/4" BRASS MESSING BUSHING	2	0
1-91	44000000 1/2" X 1/4" BRASS MESSING BUSHING	2	0
1-92	44000000 1/2" X 1/4" BRASS MESSING BUSHING	2	0
1-93	44000000 1/2" X 1/4" BRASS MESSING BUSHING	2	0
1-94	44000000 1/2" X 1/4" BRASS MESSING BUSHING	2	0
1-95	44000000 1/2" X 1/4" BRASS MESSING BUSHING	2	0
1-96	44000000 1/2" X 1/4" BRASS MESSING BUSHING	2	0
1-97	44000000 1/2" X 1/4" BRASS MESSING BUSHING	2	0
1-98	44000000 1/2" X 1/4" BRASS MESSING BUSHING	2	0
1-99	44000000 1/2" X 1/4" BRASS MESSING BUSHING	2	0
1-100	44000000 1/2" X 1/4" BRASS MESSING BUSHING	2	0

REVISIONS

NO	DATE	DESCRIPTION
1	1/29/2024	ISSUED FOR PERMIT

CAPTIVE
 Highmod Group
 4401 Poplar Pike, Raleigh, NC 27617
 PHONE: (919) 875-1420
 FAX: (919) 875-1421
 EMAIL: CAPTIVE@HIGHMOD.COM

CHIPOTLE MOUNT VERNIN #5191
 ALEXANDRIA, VA, 22309

DATE: 1/29/2024
 DWG.#: 6583466
 DRAWN BY: JWB-40
 SCALE: 3/4" = 1'-0"
 MASTER DRAWING

SHEET NO. 3

SECTION VIEW - MODEL 664840-2-ACFSP-F

REVISIONS

NO	DATE	DESCRIPTION
1	1/29/2024	ISSUED FOR PERMIT

CAPTIVE
 Highmod Group
 4401 Poplar Pike, Raleigh, NC 27617
 PHONE: (919) 875-1420
 FAX: (919) 875-1421
 EMAIL: CAPTIVE@HIGHMOD.COM

CHIPOTLE MOUNT VERNIN #5191
 ALEXANDRIA, VA, 22309

DATE: 1/29/2024
 DWG.#: 6583466
 DRAWN BY: JWB-40
 SCALE: 3/4" = 1'-0"
 MASTER DRAWING

SHEET NO. 4

Consultant:
GF
 www.greenbergfarrow.com
 1230 Peachtree Street, NE
 Suite 2900 Atlanta, GA 30309
 t: 404 601 4000

COPYRIGHT 2022
 THIS DRAWING IS AN INSTRUMENT OF SERVICE
 AND AS SUCH REMAINS THE PROPERTY OF
 CHIPOTLE MEXICAN GRILL, INC. PERMISSION FOR
 USE OF THIS DOCUMENT IS LIMITED AND CAN BE
 EXTENDED ONLY BY WRITTEN AGREEMENT WITH
 CHIPOTLE MEXICAN GRILL, INC.



STORE NO.: 5191
 8790 SACRAMENTO DR,
 ALEXANDRIA,
 VA 22309

REV.	DATE	DESCRIPTION
02/05/2024	PERMIT SET	

Engineer

Ross Eugene Waters.
 License No. 0402065153

Drawn: ISP
 Checked: DK

Project No.
 20231136.0

Consultants:

HOOD SHOP
 DRAWING

M400

HOOD SHOP
 DRAWINGS
 PROVIDED FOR
 REFERENCE ONLY

EXHAUST FAN INFORMATION - JOB#658466														
FAN UNIT TAG	QTY	FAN UNIT MODEL #	MANUFACTURER	CFM	ESP	RPM	MOTOR ENCL.	HP	PHASE	VOLT. FLA	RECHARGE VELOCITY	WEIGHT (LBS)	CODES	
1	EF-1	1	GRABER	2000	4.80	1200	SDP-PREMIUM	0.300	3	208	8.3	SDP-FRM	183	36A
2	EF-2	1	GRABER	CAPTIVATOR	120	6.60	1200	TOU-ECO	1	115	8.9	30	6.1	

MIA FAN INFORMATION - JOB#658466																	
FAN UNIT TAG	QTY	FAN UNIT MODEL #	BLOWER HOUSING	DESIGN CFM	ESP	RPM	MOTOR ENCL.	HP	PHASE	VOLT. FLA	REA	MODP	WEIGHT (LBS)	CODES			
3	MW-1	1	AI-125H-150	10M-1-HOUS	1000	1.30	0.500	1546	SDP-PREMIUM	1.000	3	208	31	33A	15A	495	12L

GAS FIRED MAKE-UP AIR UNITS							
FAN UNIT TAG	INPUT BTUH	OUTPUT BTUH	TEMP. RISE	REQUIRED INPUT GAS PRESSURE	GAS TYPE	BURNER EFFICIENCY	
3	MW-1	85933	7958	57°	7 IN. W.C. - 14 IN. W.C.	NATURAL	92

FAN OPTIONS		
FAN UNIT TAG	BY	DESCRIPTION
1	EF-1	1. GREASE BOX
1	EF-1	2. 2 YEAR PARTS WARRANTY
1	EF-2	1. 2 YEAR WARRANTY
2	EF-2	1. 2 YEAR WARRANTY
2	EF-2	2. 2 YEAR PARTS WARRANTY
2	EF-2	3. 2 YEAR PARTS WARRANTY
2	EF-2	4. 2 YEAR PARTS WARRANTY
2	EF-2	5. 2 YEAR PARTS WARRANTY
2	EF-2	6. 2 YEAR PARTS WARRANTY
2	EF-2	7. 2 YEAR PARTS WARRANTY
2	EF-2	8. 2 YEAR PARTS WARRANTY
2	EF-2	9. 2 YEAR PARTS WARRANTY
2	EF-2	10. 2 YEAR PARTS WARRANTY
2	EF-2	11. 2 YEAR PARTS WARRANTY
2	EF-2	12. 2 YEAR PARTS WARRANTY
2	EF-2	13. 2 YEAR PARTS WARRANTY
2	EF-2	14. 2 YEAR PARTS WARRANTY
2	EF-2	15. 2 YEAR PARTS WARRANTY
2	EF-2	16. 2 YEAR PARTS WARRANTY
2	EF-2	17. 2 YEAR PARTS WARRANTY
2	EF-2	18. 2 YEAR PARTS WARRANTY
2	EF-2	19. 2 YEAR PARTS WARRANTY
2	EF-2	20. 2 YEAR PARTS WARRANTY
2	EF-2	21. 2 YEAR PARTS WARRANTY
2	EF-2	22. 2 YEAR PARTS WARRANTY
2	EF-2	23. 2 YEAR PARTS WARRANTY
2	EF-2	24. 2 YEAR PARTS WARRANTY
2	EF-2	25. 2 YEAR PARTS WARRANTY
2	EF-2	26. 2 YEAR PARTS WARRANTY
2	EF-2	27. 2 YEAR PARTS WARRANTY
2	EF-2	28. 2 YEAR PARTS WARRANTY
2	EF-2	29. 2 YEAR PARTS WARRANTY
2	EF-2	30. 2 YEAR PARTS WARRANTY
2	EF-2	31. 2 YEAR PARTS WARRANTY
2	EF-2	32. 2 YEAR PARTS WARRANTY
2	EF-2	33. 2 YEAR PARTS WARRANTY
2	EF-2	34. 2 YEAR PARTS WARRANTY
2	EF-2	35. 2 YEAR PARTS WARRANTY
2	EF-2	36. 2 YEAR PARTS WARRANTY
2	EF-2	37. 2 YEAR PARTS WARRANTY
2	EF-2	38. 2 YEAR PARTS WARRANTY
2	EF-2	39. 2 YEAR PARTS WARRANTY
2	EF-2	40. 2 YEAR PARTS WARRANTY
2	EF-2	41. 2 YEAR PARTS WARRANTY
2	EF-2	42. 2 YEAR PARTS WARRANTY
2	EF-2	43. 2 YEAR PARTS WARRANTY
2	EF-2	44. 2 YEAR PARTS WARRANTY
2	EF-2	45. 2 YEAR PARTS WARRANTY
2	EF-2	46. 2 YEAR PARTS WARRANTY
2	EF-2	47. 2 YEAR PARTS WARRANTY
2	EF-2	48. 2 YEAR PARTS WARRANTY
2	EF-2	49. 2 YEAR PARTS WARRANTY
2	EF-2	50. 2 YEAR PARTS WARRANTY
2	EF-2	51. 2 YEAR PARTS WARRANTY
2	EF-2	52. 2 YEAR PARTS WARRANTY
2	EF-2	53. 2 YEAR PARTS WARRANTY
2	EF-2	54. 2 YEAR PARTS WARRANTY
2	EF-2	55. 2 YEAR PARTS WARRANTY
2	EF-2	56. 2 YEAR PARTS WARRANTY
2	EF-2	57. 2 YEAR PARTS WARRANTY
2	EF-2	58. 2 YEAR PARTS WARRANTY
2	EF-2	59. 2 YEAR PARTS WARRANTY
2	EF-2	60. 2 YEAR PARTS WARRANTY
2	EF-2	61. 2 YEAR PARTS WARRANTY
2	EF-2	62. 2 YEAR PARTS WARRANTY
2	EF-2	63. 2 YEAR PARTS WARRANTY
2	EF-2	64. 2 YEAR PARTS WARRANTY
2	EF-2	65. 2 YEAR PARTS WARRANTY
2	EF-2	66. 2 YEAR PARTS WARRANTY
2	EF-2	67. 2 YEAR PARTS WARRANTY
2	EF-2	68. 2 YEAR PARTS WARRANTY
2	EF-2	69. 2 YEAR PARTS WARRANTY
2	EF-2	70. 2 YEAR PARTS WARRANTY
2	EF-2	71. 2 YEAR PARTS WARRANTY
2	EF-2	72. 2 YEAR PARTS WARRANTY
2	EF-2	73. 2 YEAR PARTS WARRANTY
2	EF-2	74. 2 YEAR PARTS WARRANTY
2	EF-2	75. 2 YEAR PARTS WARRANTY
2	EF-2	76. 2 YEAR PARTS WARRANTY
2	EF-2	77. 2 YEAR PARTS WARRANTY
2	EF-2	78. 2 YEAR PARTS WARRANTY
2	EF-2	79. 2 YEAR PARTS WARRANTY
2	EF-2	80. 2 YEAR PARTS WARRANTY
2	EF-2	81. 2 YEAR PARTS WARRANTY
2	EF-2	82. 2 YEAR PARTS WARRANTY
2	EF-2	83. 2 YEAR PARTS WARRANTY
2	EF-2	84. 2 YEAR PARTS WARRANTY
2	EF-2	85. 2 YEAR PARTS WARRANTY
2	EF-2	86. 2 YEAR PARTS WARRANTY
2	EF-2	87. 2 YEAR PARTS WARRANTY
2	EF-2	88. 2 YEAR PARTS WARRANTY
2	EF-2	89. 2 YEAR PARTS WARRANTY
2	EF-2	90. 2 YEAR PARTS WARRANTY
2	EF-2	91. 2 YEAR PARTS WARRANTY
2	EF-2	92. 2 YEAR PARTS WARRANTY
2	EF-2	93. 2 YEAR PARTS WARRANTY
2	EF-2	94. 2 YEAR PARTS WARRANTY
2	EF-2	95. 2 YEAR PARTS WARRANTY
2	EF-2	96. 2 YEAR PARTS WARRANTY
2	EF-2	97. 2 YEAR PARTS WARRANTY
2	EF-2	98. 2 YEAR PARTS WARRANTY
2	EF-2	99. 2 YEAR PARTS WARRANTY
2	EF-2	100. 2 YEAR PARTS WARRANTY

FAN ACCESSORIES		
FAN UNIT TAG	EXHAUST	SUPPLY
1	EF-1	YES
2	EF-2	YES
3	MW-1	YES

CURB ASSEMBLIES				
UNIT TAG	NO.	WEIGHT	ITEM	SIZE
1	EF-1	39 LBS	CURB	26.500" X 26.500" X 26.000"
2	EF-2	3 LBS	CURB	17.000" X 17.000" X 26.000"
3	MW-1	60 LBS	CURB	10.000" X 10.000" X 26.000"

UNIT NUMBER	HME #	HME LOCATION	TEMP. AVERAGING	RECORDS
FAN #3	HME #1	UNIT #1	NOT AVERAGED	55

REVISIONS

NO.	DATE	DESCRIPTION
1	1/29/2024	ISSUED FOR PERMIT

DATE: 1/29/2024
 DWG.#: 6583466
 DRAWN BY: JHS-40
 SCALE: 3/4" = 1'-0"
 MASTER DRAWING

CHIPOTLE MOUNT VERNON #5191
 ALEXANDRIA, VA, 22309

SHEET NO. 5

REVISIONS

NO.	DATE	DESCRIPTION
1	1/29/2024	ISSUED FOR PERMIT

DATE: 1/29/2024
 DWG.#: 6583466
 DRAWN BY: JHS-40
 SCALE: 3/4" = 1'-0"
 MASTER DRAWING

CHIPOTLE MOUNT VERNON #5191
 ALEXANDRIA, VA, 22309

SHEET NO. 6

REVISIONS

NO.	DATE	DESCRIPTION
1	1/29/2024	ISSUED FOR PERMIT

DATE: 1/29/2024
 DWG.#: 6583466
 DRAWN BY: JHS-40
 SCALE: 3/4" = 1'-0"
 MASTER DRAWING

CHIPOTLE MOUNT VERNON #5191
 ALEXANDRIA, VA, 22309

SHEET NO. 7

REVISIONS

NO.	DATE	DESCRIPTION
1	1/29/2024	ISSUED FOR PERMIT

DATE: 1/29/2024
 DWG.#: 6583466
 DRAWN BY: JHS-40
 SCALE: 3/4" = 1'-0"
 MASTER DRAWING

CHIPOTLE MOUNT VERNON #5191
 ALEXANDRIA, VA, 22309

SHEET NO. 8

REVISIONS

NO.	DATE	DESCRIPTION
1	1/29/2024	ISSUED FOR PERMIT

DATE: 1/29/2024
 DWG.#: 6583466
 DRAWN BY: JHS-40
 SCALE: 3/4" = 1'-0"
 MASTER DRAWING

CHIPOTLE MOUNT VERNON #5191
 ALEXANDRIA, VA, 22309

SHEET NO. 8

HOOD SHOP DRAWINGS PROVIDED FOR REFERENCE ONLY

Consultant:

www.greenbergfarrow.com
 1230 Peachtree Street, NE
 Suite 2900 Atlanta, GA 30309
 t: 404 601 4000

COPYRIGHT 2022
 THIS DRAWING IS AN INSTRUMENT OF SERVICE AND AS SUCH REMAINS THE PROPERTY OF CHIPOTLE MEXICAN GRILL, INC.. PERMISSION FOR USE OF THIS DOCUMENT IS LIMITED AND CAN BE EXTENDED ONLY BY WRITTEN AGREEMENT WITH CHIPOTLE MEXICAN GRILL, INC..

CHIPOTLE MEXICAN GRILL, INC.
 PO BOX 182566
 COLUMBUS, OH 43218-2566
 TELEPHONE: (614) 318-2482
 INTERNET: WWW.CHIPTOLE.COM

STORE NO.: 5191
 8790 SACRAMENTO DR,
 ALEXANDRIA,
 VA 22309

Issue Record:

REV.	DATE	DESCRIPTION
02/05/2024	02/05/2024	PERMIT SET

Engineer

Ross Eugene Waters.
 License No. 0402065153

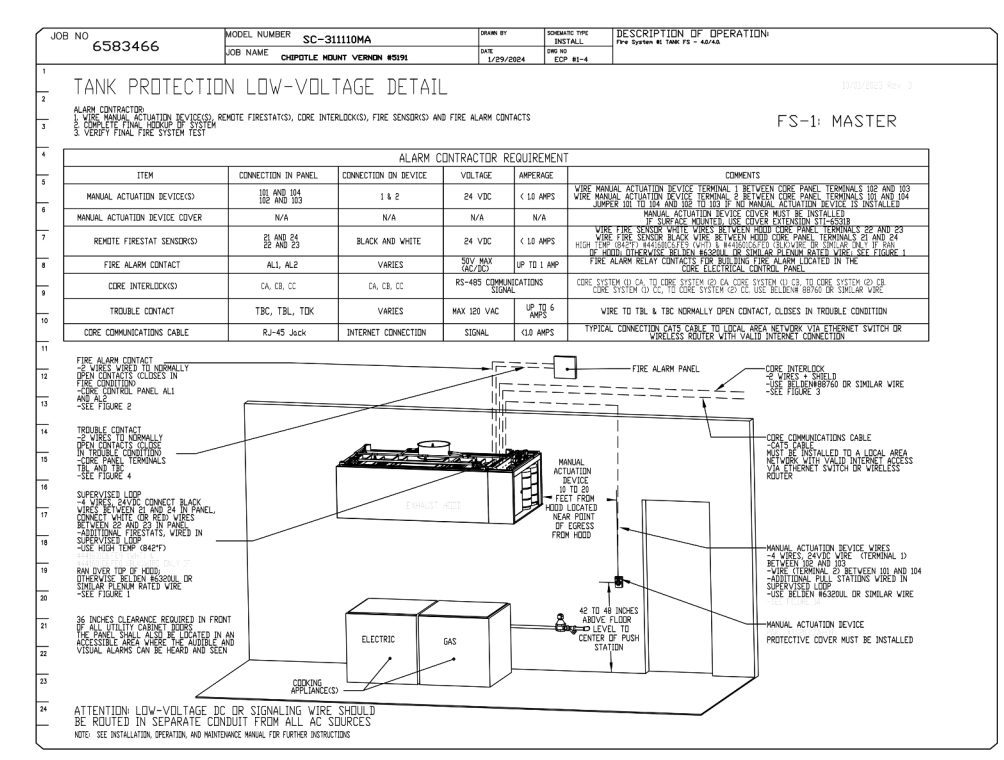
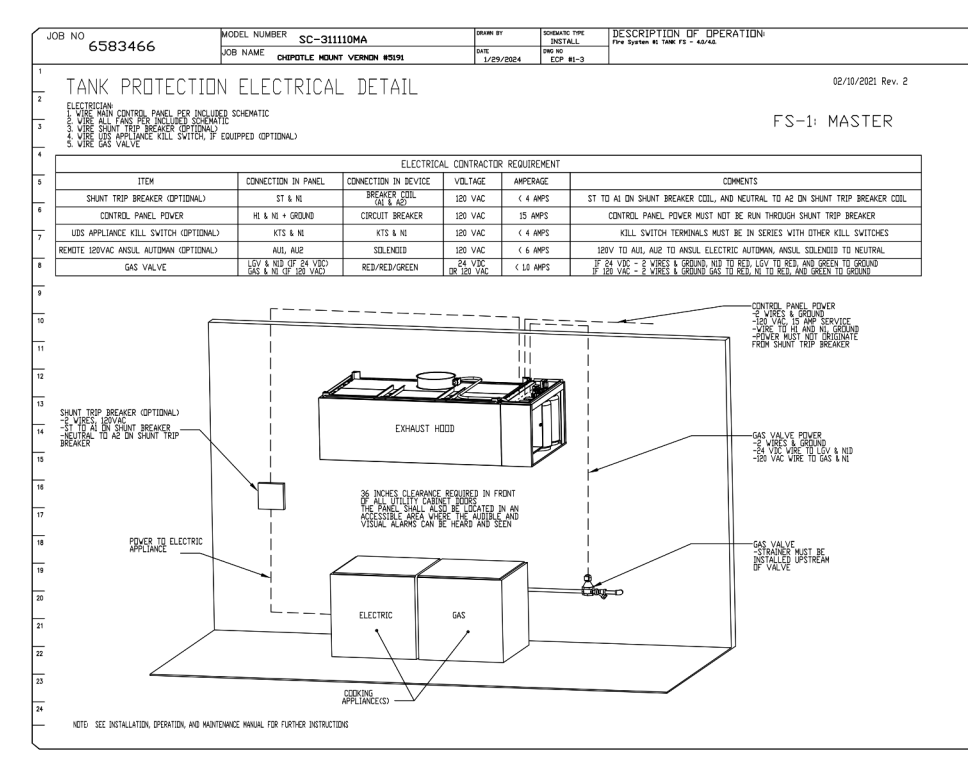
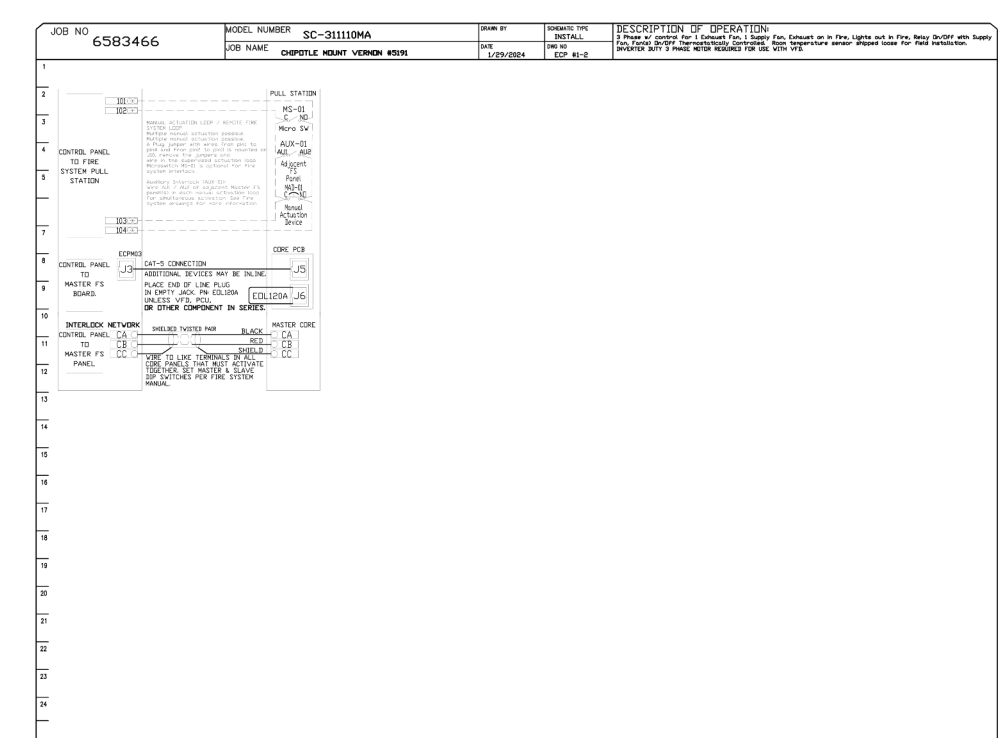
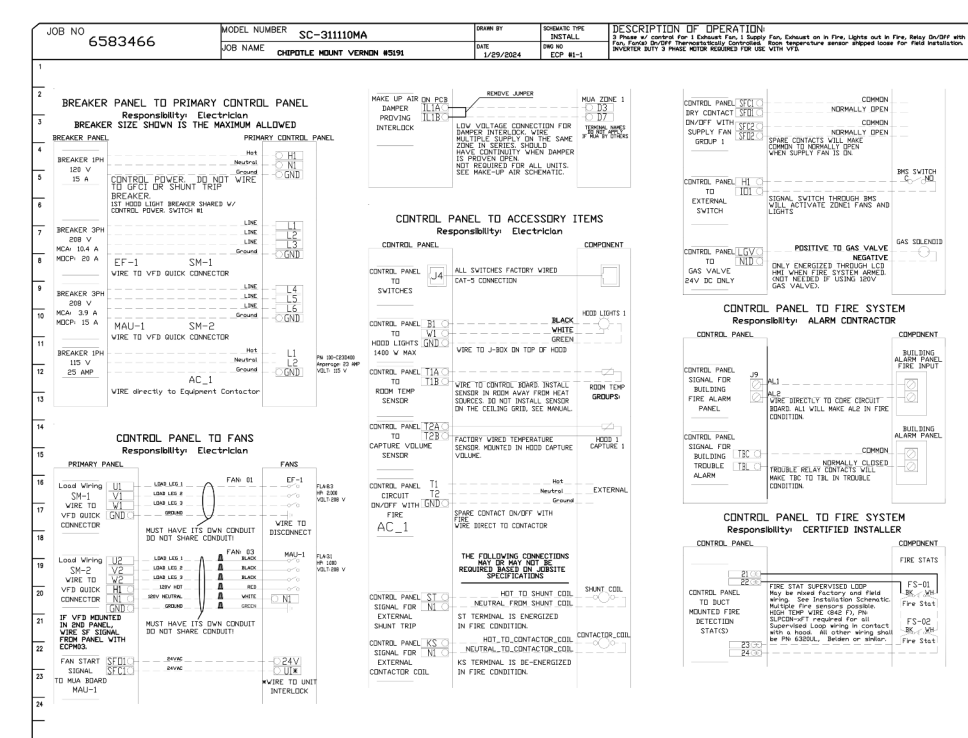
Drawn: ISP
 Checked: DK

Project No.
 20231136.0

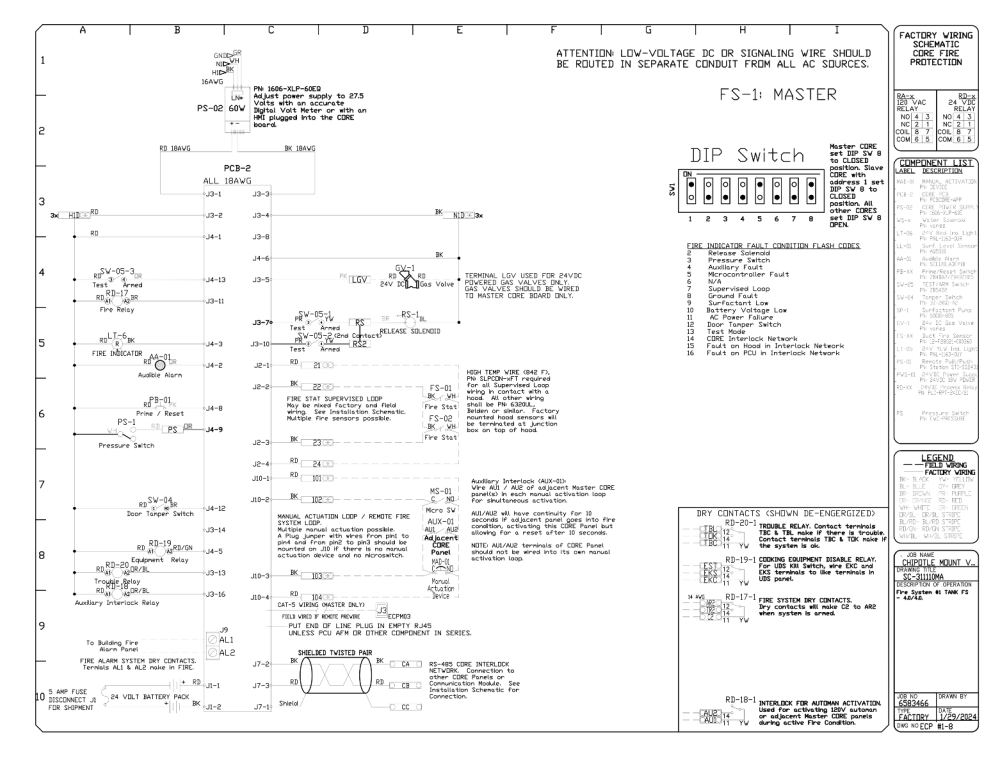
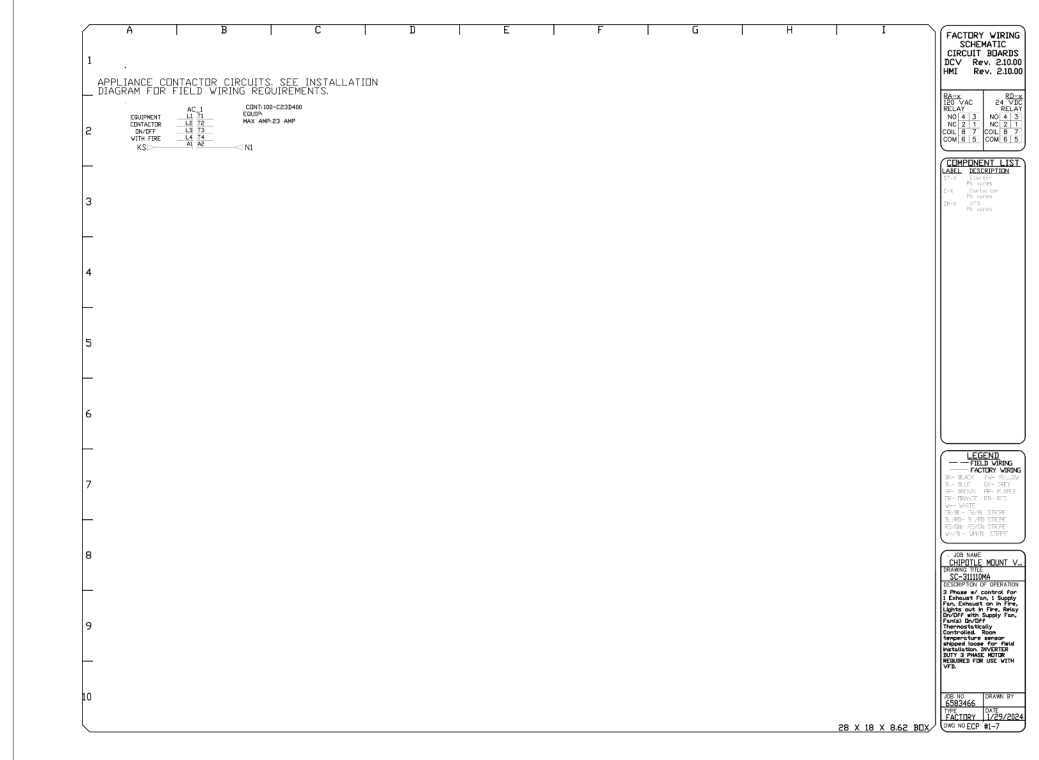
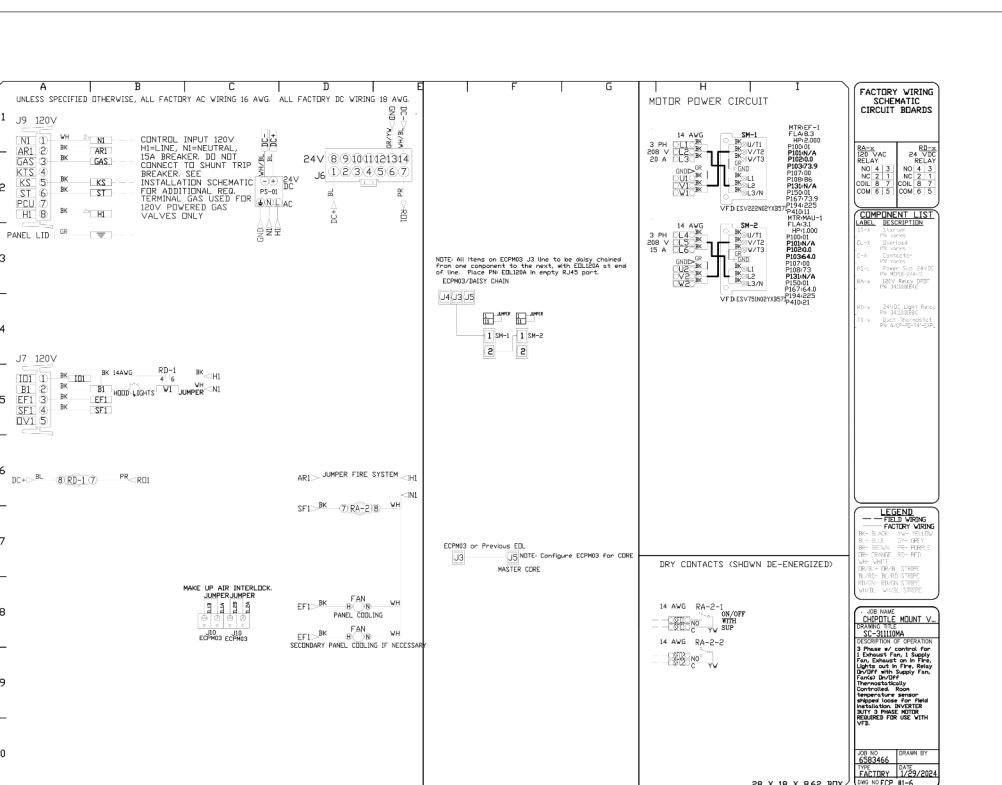
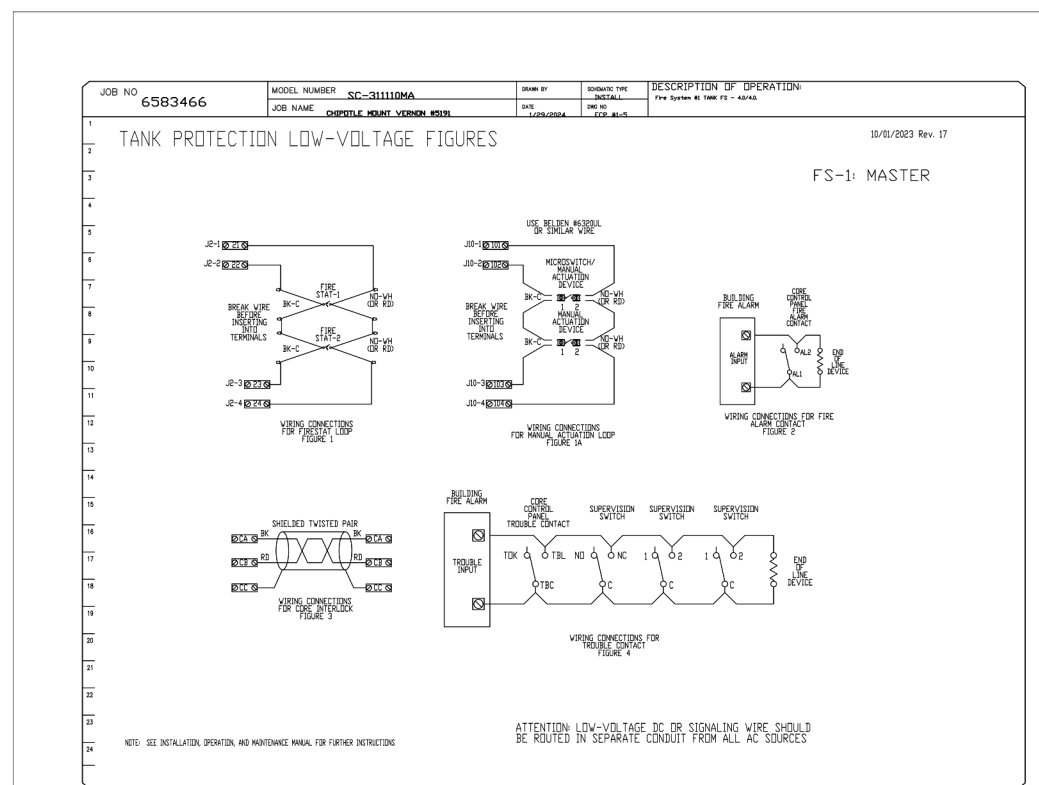
Contents:
 HOOD SHOP DRAWING (CONTND.)

M401

NO.	REV.	DESCRIPTION	DATE	BY	CHKD.
1	1	ISSUED FOR PERMIT SET	02/05/2024	ISP	DK



REVISIONS
 CAPTIVE WIRE
 Highwoods Group
 4811 Prosperity Park Dr., Raleigh, NC 27617-1500
 4811 Prosperity Park Dr., Raleigh, NC 27617-1500
 CHIPPOTLE MOUNT VERNON #5191
 ALEXANDRIA, VA, 22309
 DATE: 1/29/2024
 DWG.#: 6293466
 DRAWN BY: JMB-40
 SCALE: 3/4" = 1'-0"
 MASTER DRAWING
 SHEET NO. 9



REVISIONS
 CAPTIVE WIRE
 Highwoods Group
 4811 Prosperity Park Dr., Raleigh, NC 27617-1500
 4811 Prosperity Park Dr., Raleigh, NC 27617-1500
 CHIPPOTLE MOUNT VERNON #5191
 ALEXANDRIA, VA, 22309
 DATE: 1/29/2024
 DWG.#: 6293466
 DRAWN BY: JMB-40
 SCALE: 3/4" = 1'-0"
 MASTER DRAWING
 SHEET NO. 10

HOOD SHOP
DRAWINGS
PROVIDED FOR
REFERENCE ONLY

Consultant:
GF
 www.greenbergfarrow.com
 1230 Peachtree Street, NE
 Suite 2900 Atlanta, GA 30309
 t: 404 601 4000

COPYRIGHT 2022
 THIS DRAWING IS AN INSTRUMENT OF SERVICE
 AND AS SUCH REMAINS THE PROPERTY OF
 CHIPPOTLE MEXICAN GRILL, INC.. PERMISSION FOR
 USE OF THIS DOCUMENT IS LIMITED AND CAN BE
 EXTENDED ONLY BY WRITTEN AGREEMENT WITH
 CHIPPOTLE MEXICAN GRILL, INC..



STORE NO.: 5191
 8790 SACRAMENTO DR,
 ALEXANDRIA,
 VA 22309

REV.	DATE	DESCRIPTION
1	02/05/2024	PERMIT SET

Engineer

Ross Eugene Waters.
 License No. 0402065153
 Drawn: ISP
 Checked: DK

Project No.
 20231136.0

Contents:
 HOOD SHOP
 DRAWING
 (CONTND.)

M402

VIROGUARD SCHEDULE							
TAG	COUNT	DESCRIPTION	DUCT CONNECTION SIZE	FAN	FURNISHED BY	INSTALLED BY	BASIS FOR DESIGN MANUFACTURER
VG-1	1	VIROGUARD HOOD EXHAUST FAN ROOFTOP CONTAINMENT SYSTEM	16" X 16"	CAPTIVE-AIRE DU180HFA	TDC	GC	ENVIROMATIC

SANITIZING EQUIPMENT SCHEDULE							
TAG	COUNT	DESCRIPTION	FURNISHED BY	INSTALLED BY	BASIS FOR DESIGN		REMARKS
					MANUFACTURER	MODEL	
SB-1	2	BATHROOM AIR PURIFICATION UNIT	TUV	GC	RGF ENVIRONMENTAL GROUP	BRU ASSEMBLY	SEE ELECTRICAL SHEETS FOR CONNECTION INFORMATION
SH-1	2	HVAC AIR PURIFICATION UNIT	TUV	GC	RGF ENVIRONMENTAL GROUP	REME-HALO	SEE DETAIL 6/M700 FOR INSTALLATION INFORMATION.
SI-1	1	ICE MACHINE TREATMENT SYSTEM	TUV	GC	RGF ENVIRONMENTAL GROUP	IMS-B-GA	SEE PLUMBING DRAWINGS FOR INSTALLATION INFORMATION.

AIR TERMINAL SCHEDULE										
TAG	DESCRIPTION	FACE SIZE	MATERIAL	FINISH	MOUNTING	FURNISHED BY	INSTALLED BY	BASIS FOR DESIGN		NOTES
								MANUFACTURER	MODEL	
CD1	PERFORATED CEILING DIFFUSER	24" X 24"	ALUMINUM	WHITE	LAY-IN CEILING	GC	GC	NAILOR	4320A TYPE L	PROVIDE WITH INTEGRAL OBD
CD2	PERFORATED CEILING DIFFUSER	24" X 12"	ALUMINUM	WHITE	LAY-IN CEILING	GC	GC	NAILOR	4320A TYPE L	PROVIDE WITH INTEGRAL OBD, REMOVE 4-WAY DEFLECTORS
CD3	PERFORATED CEILING DIFFUSER	24" X 24"	ALUMINUM	WHITE	LAY-IN CEILING	GC	GC	NAILOR	4320A TYPE S	PROVIDE WITH INTEGRAL OBD
ER1	PERFORATED CEILING EXHAUST	12" X 12"	ALUMINUM	WHITE	SURFACE MOUNT	GC	GC	NAILOR	4330R TYPE S	PROVIDE INTEGRAL OBD
RG1	PERFORATED CEILING RETURN	48" X 24"	ALUMINUM	WHITE	LAY-IN CEILING	GC	GC	NAILOR	4330R TYPE L	
RG3	PERFORATED CEILING RETURN	48" X 24"	ALUMINUM	WHITE	SURFACE MOUNT	GC	GC	NAILOR	4330R TYPE S	
SR1	ADJUSTABLE TURBO NOZZLE	SEE NECK SIZE	ALUMINUM	WHITE	WALL	GC	GC	AIR CONCEPTS	ANR-14	PROVIDE WITH CONCEALED MOUNTING AND FACE-ACCESSIBLE OBD
SR2	DOUBLE DEFLECTION SUPPLY REGISTER	SEE NECK SIZE	ALUMINUM	WHITE	WALL	GC	GC	NAILOR	51DH	PROVIDE WITH INTEGRAL OBD

FAN SCHEDULE											
TAG	DESCRIPTION	AIRFLOW	E.S.P.	WEIGHT	ELECTRICAL		FURNISHED BY	INSTALLED BY	BASIS FOR DESIGN		REMARKS
					MOTOR POWER	V/P/H			MANUFACTURER	MODEL	
EF-1	UPBLAST UL762 EXHAUST FAN	2,550 CFM	1.20 in-wg	400 lb	2 hp	208/3/60	HS	GC	CAPTIVE-AIRE	DU180HFA	DIRECT DRIVE UL762 UPBLAST EXHAUST FAN FURNISHED WITH WEATHERPROOF DISCONNECT AND VENTED ROOF CURB
EF-2	DOWNBLAST RESTROOM EXHAUST FAN	150 CFM	0.60 in-wg	100 lb	0.18 hp	120/1/60	HS	GC	CAPTIVE-AIRE	DR12HFA	DIRECT DRIVE DOWNBLAST RESTROOM EXHAUST FAN FURNISHED WITH INTEGRAL DISCONNECT, SPEED CONTROL, BACKDRAFT DAMPER, AND CURB

MAKEUP AIR UNIT SCHEDULE														
TAG	DESCRIPTION	AIRFLOW	E.S.P.	HEATING			WEIGHT	ELECTRICAL		FURNISHED BY	INSTALLED BY	BASIS FOR DESIGN		REMARKS
				INPUT	OUTPUT	EAT		MOTOR POWER	V/P/H			MANUFACTURER	MODEL	
MAU-1	DIRECT-FIRED MAKEUP AIR UNIT	1,300 CFM	0.50 in-wg	225,000 Btu/h	220,000 Btu/h	21 °F	650 lb	1 hp	208/3/60	HS	CMG	CAPTIVE-AIRE	A1-D.250-15D	12.5:1 MAX TURNDOWN. FURNISHED WITH DISCONNECT, ROOF CURB, SCREEN INTAKE, AND WASHABLE ALUMINUM FILTERS

CONDENSING UNIT SCHEDULE															
TAG	DESCRIPTION	NOMINAL CAPACITY	NUMBER OF		REFRIGERANT		WEIGHT	ELECTRICAL			FURNISHED BY	INSTALLED BY	BASIS FOR DESIGN		REMARKS
			COMPRESSORS	CIRCUITS	TYPE	CHARGE		MOCP	FLA	V/P/H			MANUFACTURER	MODEL	
CU-1	CONDENSING UNIT - WALK-IN COOLER		1	1	R-404A	10.4 lb	250 lb	15 A	9 A	208/3/60	WCS	GC	HARFORD	KPCL99M20P-3E	FURNISHED WITH WALK-IN COOLER
CU-2	REMOTE CONDENSER - LOW CAPACITY ICE MAKER		0	1	R-404A	11.46 lb	100 lb			120/1/60	KES	GC	HOSHIZAKI	URC-9FZ	FURNISHED WITH ICE MAKER
CU-3	REMOTE CONDENSER - SODA MACHINE ICE MAKER		0	1	R-404A	3.86 lb	100 lb			120/1/60	KES	GC	HOSHIZAKI	URC-5FZ	FURNISHED WITH ICE MAKER

KITCHEN HOOD SCHEDULE																									
TAG	DESCRIPTION	MAX COOKING TEMP.	EXHAUST PLENUM							PERFORATED SUPPLY PLENUMS							BASIS FOR DESIGN		REMARKS						
			AIRFLOW	E.S.P.	DUCT COLLARS			LENGTH	WIDTH	LENGTH	WIDTH	MAU PLENUM			AC PLENUM		NO. OF LIGHT FIXTURES	WEIGHT		FURNISHED BY	INSTALLED BY	MANUFACTURER	MODEL		
					NO.	WIDTH	LENGTH					AIRFLOW	NO.	WIDTH	LENGTH	AIRFLOW								NO.	DIAMETER
HD-1	TYPE I CANOPY HOOD WITH PERFORATED MAU AND AC SUPPLY PLENUMS	600 °F	2,550 CFM	0.97 in-wg	1	10"	2' - 0"	12' - 9"	4' - 3"	13' - 9"	1' - 7"	1,300 CFM	3	6"	2' - 4"	700 CFM	6	8"	8	1,150 lb	HS	GC	CAPTIVE-AIRE	5424 ND-2-ACPS-P	MAT'L: 18 GA. TYPE 430 SS. FURNISHED WITH VERTICAL END PANELS, VAPORPROOF INCANDESCENT LIGHT FIXTURES, 16" TALL HE SS FILTERS, INTEGRAL UTILITY CABINET, ANSUL SYSTEM, DUCT COLLAR TEMPERATURE SENSOR, PREWIRE PACKAGE, SPARE FIRE SYSTEM DRY CONTACT, AND 4-POLE 20A CONTACTOR

ROOFTOP UNIT SCHEDULE																											
TAG	DESCRIPTION	NOMINAL CAPACITY	EER	AIRFLOW			GROSS SENSIBLE CAPACITY				HEATING CAPACITY			NUMBER OF		REFRIGERANT		WEIGHT	ELECTRICAL			FURNISHED BY	INSTALLED BY	BASIS FOR DESIGN		REMARKS	
				TOTAL	OA	E.S.P.	TOTAL	SENSIBLE	COND. EAT	DB	WB	INPT	OUTPUT	EAT	COMPRESSORS	CIRCUITS	TYPE		CHARGE	MOCP	MCA			V/P/H	MANUFACTURER		MODEL
RTU-1	KITCHEN ROOFTOP UNIT	8.5 ton	12	3,400 CFM	500 CFM	1.00 in-wg	107,200 Btu/h	75,900 Btu/h	80 °F	67 °F	95 °F	180,000 Btu/h	144,000 Btu/h	60 °F	2	2	R-410A	14 lb	1,265 lb	70 A	56.3 A	208/3/60	HES	GC	YORK	Z1102	FURNISHED WITH COMP. ENTHALPY ECON., BAROMETRIC RELIEF, RET. SMOKE DETECTOR W/ REMOTE KEYED ANNUNCIATOR/RESET, M.O.D., MERV-8 FILTERS, CURB, HAIL GUARD, TOOLLESS HINGED ACCESS PANELS, DISCONNECT, & UNIT-MOUNTED CONVENIENCE RECEPTACLE
RTU-2	DINING ROOM ROOFTOP UNIT	10 ton	12	4,000 CFM	1,007 CFM	1.00 in-wg	130,000 Btu/h	96,000 Btu/h	80 °F	67 °F	95 °F	240,000 Btu/h	192,000 Btu/h	60 °F	2	2	R-410A	14 lb	1,295 lb	60 A	54.9 A	208/3/60	HES	GC	YORK	Z1120	FURNISHED WITH COMP. ENTHALPY ECON., BAROMETRIC RELIEF, RET. SMOKE DETECTOR W/ REMOTE KEYED ANNUNCIATOR/RESET, M.O.D., MERV-8 FILTERS, CURB, HAIL GUARD, TOOLLESS HINGED ACCESS PANELS, DISCONNECT, & UNIT-MOUNTED CONVENIENCE RECEPTACLE

AIR BALANCE SCHEDULE					
TAG	SUPPLY FLOW	RETURN FLOW	OA FLOW	EXHAUST FLOW	SUBTOTAL
EF-1	0 CFM	0 CFM		2,550 CFM	-2,550 CFM
EF-2	0 CFM	0 CFM		150 CFM	-150 CFM
MAU-1	1,300 CFM	0 CFM	1,300 CFM	0 CFM	1,300 CFM
RTU-1	3,400 CFM	2,900 CFM	500 CFM	0 CFM	500 CFM
RTU-2	4,000 CFM	2,993 CFM	1007 CFM	0 CFM	1,007 CFM
NET PRESSURIZATION					107 CFM

CONTROL FUNCTIONS
A. THE MAIN COOKING EXHAUST FAN AND MAKE-UP AIR UNIT SHALL BE INTERLOCKED TO OPERATE TOGETHER. THIS CONTROL CIRCUIT IS ACTIVATED BY A SWITCH AND INCLUDES A FIRE PROTECTION OVERRIDE.
B. THE TEMPERATURE IN EACH ZONE IS CONTROLLED BY SPACE TEMPERATURE SENSORS CONNECTED TO THE THERMOSTATS LOCATED IN THE OFFICE. ALL ZONES SHALL OPERATE WITH CONTINUOUS FAN OPERATION DURING OCCUPIED TIMES AND INTERMITTENTLY AS NEEDED TO MAINTAIN SET POINTS DURING UNOCCUPIED TIMES. OUTSIDE AIR DAMPERS SHALL BE OPEN CONTINUOUSLY WHEN EITHER IN OCCUPIED MODE OR WHEN THE HOOD SYSTEM IS ON AND SHALL BE CLOSED DURING UNOCCUPIED PERIODS.
C. THE THERMOSTATS SHALL DETERMINE OCCUPIED/UNOCCUPIED STATUS BASED ON THE SCHEDULE IN THE ENERGY MANAGEMENT SYSTEM.

Consultant:



www.greenbergfarrow.com
1230 Peachtree Street, NE
Suite 2900 Atlanta, GA 30309
t: 404 601 4000

COPYRIGHT 2022
THIS DRAWING IS AN INSTRUMENT OF SERVICE AND AS SUCH REMAINS THE PROPERTY OF CHIPOTLE MEXICAN GRILL, INC.. PERMISSION FOR USE OF THIS DOCUMENT IS LIMITED AND CAN BE EXTENDED ONLY BY WRITTEN AGREEMENT WITH CHIPOTLE MEXICAN GRILL, INC..



CHIPOTLE MEXICAN GRILL, INC.
PO BOX 182566
COLUMBUS, OH 43218-2566
TELEPHONE: (614) 318-2482
INTERNET: WWW.CHIPOTLE.COM

STORE NO.: 5191

8790 SACRAMENTO DR,
ALEXANDRIA,
VA 22309

REV.	DATE	DESCRIPTION
1	03/20/2024	PERMIT SET
1	02/05/2024	REVISION 1
	01/12/2024	LANDLORD SET

Issue Record:

Engineer

Ross Eugene Waters.
License No. 0402065153

Drawn: JSP
Checked: DK

Project No.
20231136.0

Contents:

HVAC SCHEDULES

M600

Air System Sizing Summary for RTU-1

Project Name: 20230302 Chipotle Mount Vernon VA
Prepared by: GreenbergFarrow

03/18/2024
09:19PM

Air System Information

Air System Name RTU-1
Equipment Class PKG ROOF
Air System Type SZCAV

Number of zones 1
Floor Area 1545.0 ft²
Location Richmond, Virginia

Sizing Calculation Information

Calculation Months Jan to Dec
Sizing Data User-Modified

Zone CFM Sizing Sum of space airflow rates
Space CFM Sizing Individual peak space loads

Central Cooling Coil Sizing Data

Total coil load	7.6 Tons	Load occurs at	Aug 1500
Total coil load	91.6 MBH	OA DB / WB	92.5 / 76.3 °F
Sensible coil load	75.2 MBH	Entering DB / WB	78.5 / 65.6 °F
Coil CFM at Aug 1500	3400 CFM	Leaving DB / WB	57.9 / 56.7 °F
Max block CFM	3400 CFM	Coil ADP	55.6 °F
Sum of peak zone CFM	3400 CFM	Bypass Factor	0.100
Sensible heat ratio	0.821	Resulting RH	50 %
CFM/Ton	445.3	Design supply temp.	57.8 °F
ft ³ /Ton	202.3	Zone T-stat Check	1 of 1 OK
BTU/(hr · ft ²)	59.3	Max zone temperature deviation	0.0 °F
Water flow @ 10.0 °F rise	N/A		

Central Heating Coil Sizing Data

Max coil load	52.0 MBH	Load occurs at	Des Htg
Coil CFM at Des Htg	3400 CFM	BTU/(hr · ft ²)	33.6
Max coil CFM	3400 CFM	Ent. DB / Lvg DB	61.7 / 75.9 °F
Water flow @ 20.0 °F drop	N/A		

Supply Fan Sizing Data

Actual max CFM	3400 CFM	Fan motor BHP	0.00 BHP
Standard CFM	3378 CFM	Fan motor kW	0.00 kW
Actual max CFM/ft ²	2.20 CFM/ft ²	Fan static	0.00 in wg

Outdoor Ventilation Air Data

Design airflow CFM	490 CFM	CFM/person	49.00 CFM/person
CFM/ft ²	0.32 CFM/ft ²		

Air System Sizing Summary for RTU-2

Project Name: 20230302 Chipotle Mount Vernon VA
Prepared by: GreenbergFarrow

03/18/2024
09:27PM

Air System Information

Air System Name RTU-2
Equipment Class PKG ROOF
Air System Type SZCAV

Number of zones 1
Floor Area 1142.0 ft²
Location Richmond, Virginia

Sizing Calculation Information

Calculation Months Jan to Dec
Sizing Data User-Modified

Zone CFM Sizing Sum of space airflow rates
Space CFM Sizing Individual peak space loads

Central Cooling Coil Sizing Data

Total coil load	10.2 Tons	Load occurs at	Jul 1600
Total coil load	122.7 MBH	OA DB / WB	91.9 / 76.2 °F
Sensible coil load	83.6 MBH	Entering DB / WB	78.2 / 67.6 °F
Coil CFM at Jul 1600	4000 CFM	Leaving DB / WB	58.7 / 57.8 °F
Max block CFM	4000 CFM	Coil ADP	56.6 °F
Sum of peak zone CFM	4000 CFM	Bypass Factor	0.100
Sensible heat ratio	0.681	Resulting RH	61 %
CFM/Ton	391.3	Design supply temp.	57.8 °F
ft ³ /Ton	111.7	Zone T-stat Check	0 of 1 OK
BTU/(hr · ft ²)	107.4	Max zone temperature deviation	0.1 °F
Water flow @ 10.0 °F rise	N/A		

Central Heating Coil Sizing Data

Max coil load	103.5 MBH	Load occurs at	Des Htg
Coil CFM at Des Htg	4000 CFM	BTU/(hr · ft ²)	90.6
Max coil CFM	4000 CFM	Ent. DB / Lvg DB	55.8 / 79.9 °F
Water flow @ 20.0 °F drop	N/A		

Supply Fan Sizing Data

Actual max CFM	4000 CFM	Fan motor BHP	0.00 BHP
Standard CFM	3974 CFM	Fan motor kW	0.00 kW
Actual max CFM/ft ²	3.50 CFM/ft ²	Fan static	0.00 in wg

Outdoor Ventilation Air Data

Design airflow CFM	1007 CFM	CFM/person	18.31 CFM/person
CFM/ft ²	0.88 CFM/ft ²		

CHIPOTLE MOUNT VERNON VA VENTILATION SCHEDULE

Based on Virginia Mechanical Code, 2018

Space	Floor Area	People O/A (CFM/Person)	PPL Density #/1000 Sq. Ft	Occupants	Area O/A (CFM/Sq. Ft)	Zone Effective	Required O/A
Dining Room	1142	7.5	70	80.0	0.18	0.8	1007.0
Kitchen	1445	7.5	20	29.0	0.12	0.8	488.6
Total							1495.6



COPYRIGHT 2022
THIS DRAWING IS AN INSTRUMENT OF SERVICE
AND AS SUCH REMAINS THE PROPERTY OF
CHIPOTLE MEXICAN GRILL, INC. PERMISSION FOR
USE OF THIS DOCUMENT IS LIMITED AND CAN BE
EXTENDED ONLY BY WRITTEN AGREEMENT WITH
CHIPOTLE MEXICAN GRILL, INC.



STORE NO.: 5191
8790 SACRAMENTO DR,
ALEXANDRIA,
VA 22309

Issue Record:

REV.	DATE	DESCRIPTION
1	03/20/2024	REVISION 1

Engineer

Ross Eugene Waters.
License No. 0402065153

Drawn: ISP
Checked: DK

Project No.
20231136.0

Contents:
HVAC Calculations

M800