

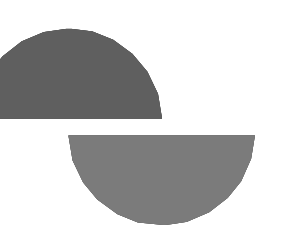
1 HVAC ROOF PLAN
M2.0 1/4" = 1'-0"

KEY NOTES:

- 1 FACTORY INSTALLED SMOKE DETECTORS IN MAIN SUPPLY AND RETURN OF EACH ROOFTOP UNIT.
- 2 INSTALL ROOF MOUNTED EXHAUST FAN PER DETAIL ON SHEET M3.0. COORDINATE EXACT LOCATION OF FAN PENETRATION WITH ARCHITECTURAL ROOF PLAN. TRANSITION GALVANIZED DUCTWORK AS NECESSARY FROM FAN INTO CEILING/JOIST SPACE. SEE SHEET M1.0 FOR CONTINUATION.
- 3 PROVIDE FLEXIBLE CONNECTIONS BETWEEN ALL DUCTWORK AND MECHANICAL UNITS.
- 4 ROUTE SCH. 40 PVC CONDENSATE DRAIN PIPING ALONG ROOF. SUPPORT PIPING PER DETAIL ON SHEET M3.0.
- 5 MAINTAIN A MINIMUM 10' CLEARANCE BETWEEN OUTSIDE AIR INTAKES AND EXHAUST TERMINATIONS ON ROOF.
- 6 FOOD SERVICE REFRIGERATION EQUIPMENT PROVIDED BY OTHERS.
- 7 FOOD SERVICE REFRIGERATION EQUIPMENT MOUNTED ON PRE-ENGINEERED RACK. REFER TO "CONDENSING UNIT ROOFING SUPPORT DETAIL" ON ARCHITECTURAL SHEETS FOR FLORIDA PRODUCT APPROVAL INFORMATION.
- 8 FOR SPECIFIC WIND LOADING REQUIREMENTS NOT TO EXCEED 120 MPH, SEE STRUCTURAL DRAWINGS.

SHEET GENERAL NOTE:

- A CONTRACTOR RESPONSIBLE FOR USING CURBS PLUS CLIPS ON ALL RTUS. CLIPS ARE DELIVERED TO SITE AS SEPARATE PACKAGE.



COPYRIGHT ©. All reports, plans, specifications, computer files, field data, notes and other documents are instruments of service prepared by Cuhaci & Peterson, C.A.P. All instruments of service remain the property of C.A.P. C.A.P. shall retain all common law, statutory and other reserved rights, including the copyright therein. Any use or reproduction of this document without written permission from C.A.P. is a violation of Federal copyright laws.

CLIENT NAME
WAWA
260 WEST BALTIMORE PIKE
WAWA, PENNSYLVANIA 19063

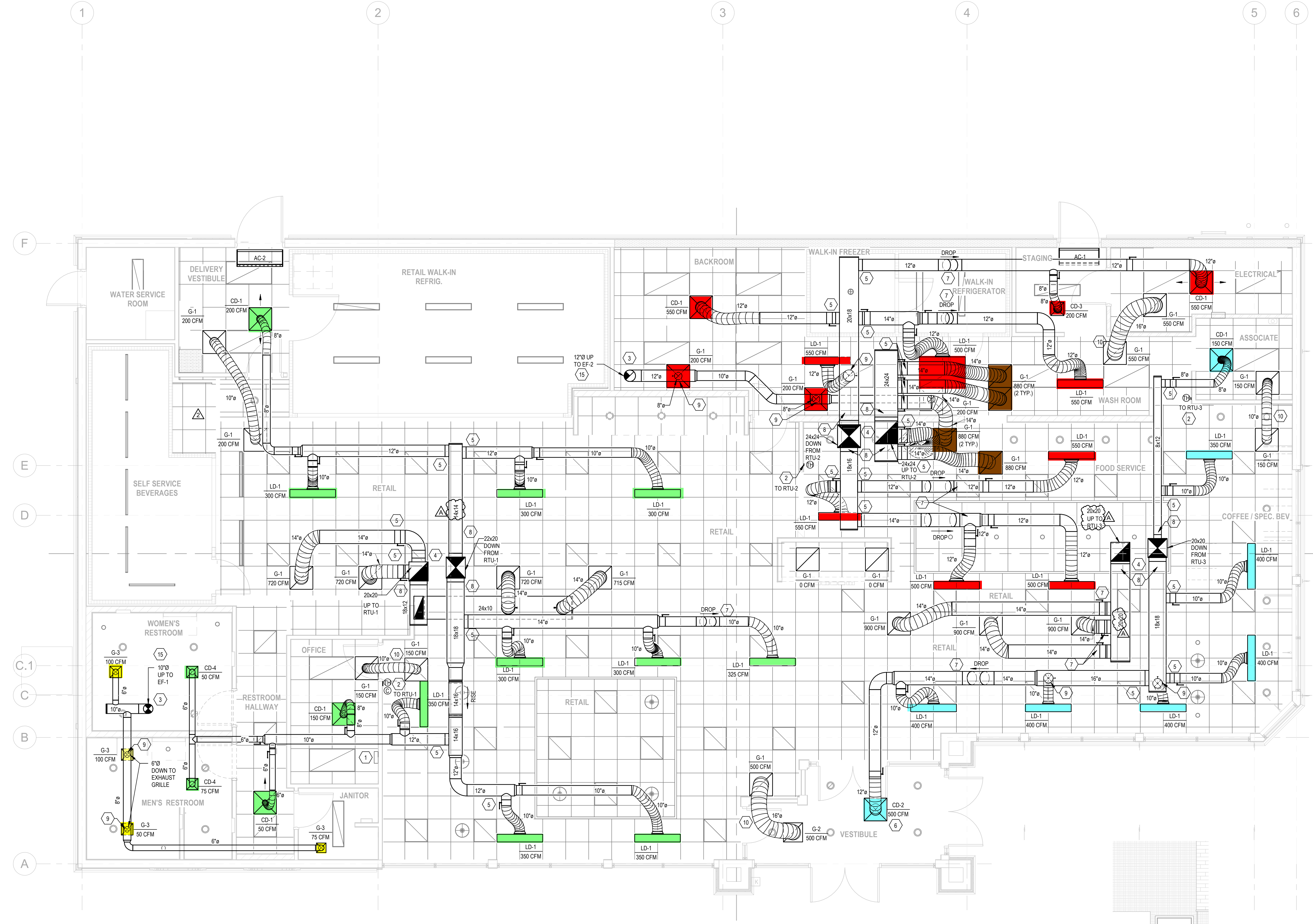
PROJECT NAME
WAWA F110 v2021.2
STORE #5440
3634 THOMASVILLE ROAD
TALLAHASSEE, FL

SHEET TITLE
HVAC ROOF PLAN

PROJECT NO.
220402

No.	Description	Date
1	PRE-BID SET	01/09/2024
2	BID SET	03/21/2024
3	CONSTRUCTION SET	06/26/2024

DRAWN	JFG
CHECKED	ESD



1 HVAC FLOOR PLAN
M1.0 1/4" = 1'-0"

2 HVAC SENSOR ELEVATION
M1.0 1/4" = 1'-0"

- KEY NOTES:**
- REMOTE TEST STATIONS FOR SMOKE DETECTORS FOR RTU-1, 2, & 3. TEST STATIONS TO BE MOUNTED ON THE MANAGER'S OFFICE WALL. SECURITY CONTRACTOR SHALL WIRE RTU FACTORY MOUNTED SMOKE DETECTORS TO SECURITY FIRE ALARM PANEL. MECHANICAL CONTRACTOR SHALL PROVIDE TEST STATION AND WIRING BETWEEN COMPONENTS AS WELL AS WIRING TO SHUT DOWN THE A/C FAN UPON ACTIVATION OF THE SMOKE DETECTOR. G.C. TO TEST THE SMOKE DETECTOR FUNCTIONS WITH THE WAWA PROJECT MANAGER.
 - WALL MOUNTED SENSORS FOR EACH MECHANICAL UNIT PER ROOFTOP UNIT SCHEDULE ON SHEET M3.0. G.C. SHALL INSTALL AND WIRE TO UNIT. BAS CONTRACTOR SHALL CONNECT TO MECHANICAL UNIT ONLY.
 - COORDINATE EXACT LOCATION OF EXHAUST FAN PENETRATION WITH ARCHITECTURAL ROOF PLAN. INSTALL GALVANIZED DUCTWORK DOWN FROM FAN, INTO CEILING/JOIST SPACE, AND CONNECT TO CEILING GRILLES.
 - REFER TO TYPICAL DUCT PLENUM DETAIL ON SHEET M3.0.
 - COORDINATE DUCT WITH STRUCTURE IN THIS LOCATION. COORDINATE TAKEOFF LOCATIONS WITH ANGELED WEB OPENINGS AND SUPPORT AT PANEL POINT.
 - PROVIDE SURFACE MOUNT ADAPTER FRAME TO ALLOW ACCESS TO CEILING ABOVE THROUGH DIFFUSER OPENING. SEE AIR DEVICE SCHEDULE.
 - ROUTE DUCT UNDER STRUCTURAL MEMBERS AT THIS LOCATION.
 - DUCTWORK TO RUN WITHIN JOIST SPACING. MECHANICAL CONTRACTOR TO COORDINATE MECHANICAL WORK WITH ALL TRADES PRIOR TO INSTALLATION.
 - DUCT TAKEOFF WITH DAMPER FROM BOTTOM OF MAIN DUCT.
 - TRANSFER AIR DUCT ASSEMBLY.
 - NOT USED.
 - NOT USED.
 - NOT USED.
 - NOT USED.
 - EXHAUST DUCT TO ROOF MOUNTED EXHAUST FAN. SEE ROOF PLAN FOR CONTINUATION.

PERMITTING NOTE:
ALL REFRIGERATION EQUIPMENT INCLUDING WALK-IN COOLERS AND REFRIGERATORS WILL BE SUBMITTED UNDER A SEPARATE PERMIT.

SHEET GENERAL NOTE:
A. MECHANICAL CONTRACTOR SHALL ADJUST ALL LINEAR SLOT DIFFUSERS TO A GENERALLY VERTICAL FLOW. ADJUSTMENT SHALL BE MADE SO AS TO AVOID AIRFLOWS ON SENSORS, REFRIGERATION CASES, OR OPEN FOOD REFRIGERATION EQUIPMENT.

HVAC LEGEND	
SYMBOL	DESCRIPTION
	NEW RECTANGULAR OR ROUND DUCT
	FLEXIBLE DUCT
	SUPPLY AIR DUCTWORK UP THROUGH PLAN
	RETURN AIR DUCTWORK UP THROUGH PLAN
	EXHAUST AIR DUCTWORK UP THROUGH PLAN
	90° ELBOW WITH TURNING VANES
	MANUAL AIR VOLUME CONTROL DAMPER
	4 WAY SUPPLY DIFFUSER
	2 WAY OPPOSED SUPPLY DIFFUSER
	2 WAY CORNER SUPPLY DIFFUSER
	1 WAY SUPPLY DIFFUSER
	RETURN AIR DEVICE
	EXHAUST AIR DEVICE
	AIR CURTAIN
	LINEAR SLOT DIFFUSER WITH PLENUM
	COMBINATION TEMPERATURE/HUMIDITY SENSOR
	TEMPERATURE SENSOR
	CO2 SENSOR
	TYPE MARK CFM
	MECHANICAL EQUIPMENT TAG
	CONDENSATE PIPING
	INLINE MOUNTED EXHAUST FAN
	ROOF MOUNTED EXHAUST FAN
	PACKAGED ROOFTOP AIR CONDITIONER

2600 Meiland Center Parkway
Suite #200
Meiland, FL 32751
P (407) 661-9100
F (407) 661-9101
c-p.com



Copyright ©. All rights reserved. Specifications, conditions, field data, notes and other documents are instruments of service prepared by CuHaci & Peterson, C.A.P. All instruments of service remain the property of C.A.P. C.A.P. shall retain all copyright, title, liability and other reserved rights, including the copyright therein. Any use or reproduction of this document without written permission from C.A.P. is a violation of Federal copyright laws.

CLIENT NAME
WAWA
260 WEST BALTIMORE PIKE
WAWA, PENNSYLVANIA 19063

PROJECT NAME
WAWA F110 V2021.2
STORE #5440
3634 THOMASVILLE ROAD
TALLAHASSEE, FL

Revision Schedule

No.	Description	Date
1	PRE-BID SET	01/09/2024
2	PERMIT COMMENTS	02/19/2024
A	BID SET	03/21/2024
A	CONSTRUCTION SET	05/29/2024

PROJECT NO.
220402

DATE
01-09-2024

DRAWN
JSP

CHECKED
ESD

M1.0

HVAC FLOOR PLAN