



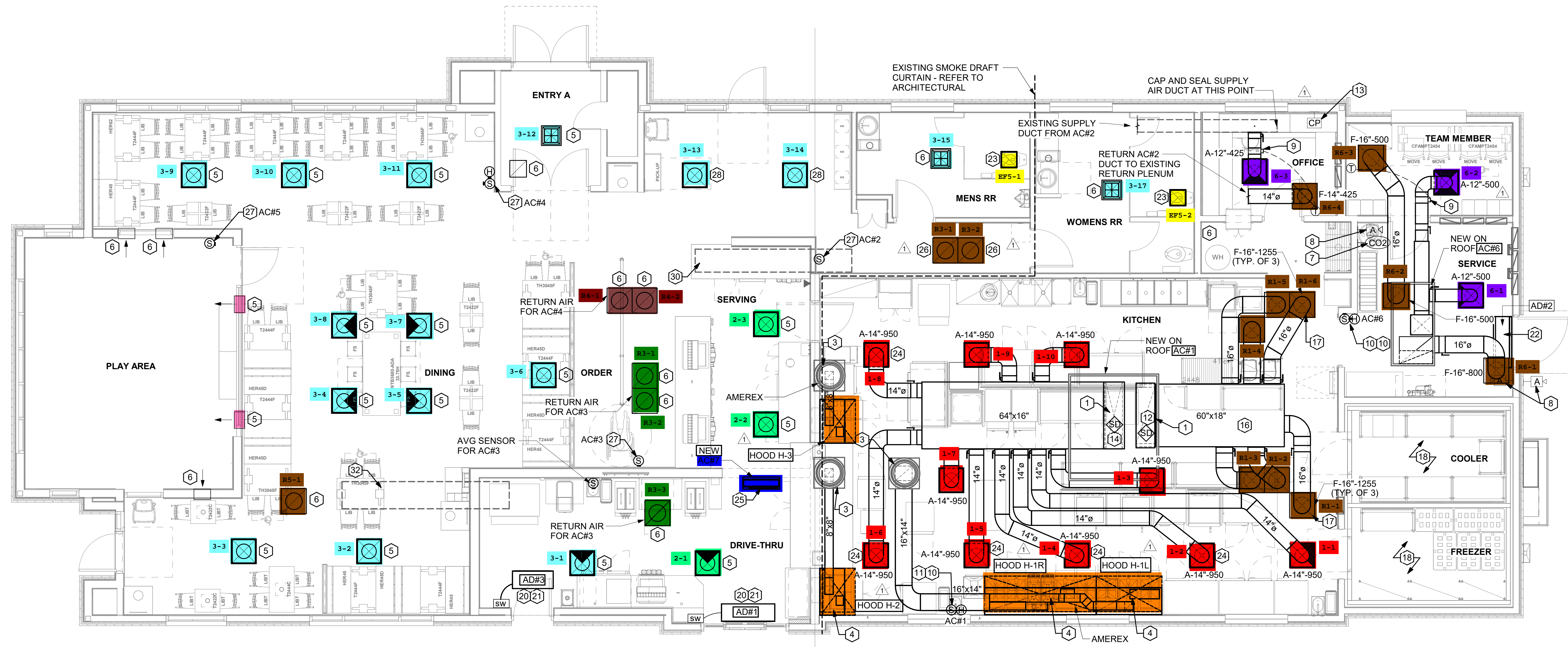
Chick-fil-A
 5200 Buffington Road
 Atlanta, Georgia
 30349-2998



www.cphcorp.com
**A Full Service
 A & E Firm**
 Plans Prepared By
CPH Consulting, LLC.
 State of Georgia License:
 Engineer No. PEF00631
 Surveyor No. LSF00870
 Architect No. N/A
 Landscape No. N/A



03/28/2024



1 MECHANICAL FLOOR PLAN
 1/4" = 1'-0"

LEGEND

A-12-400	TYPE - NECK SIZE - CFM	EF#1	EXHAUST FAN #1 (TYP.)
(S)	REMOTE TEMPERATURE SENSOR	△	PULL STATION
(H)	HUMIDITY SENSOR	▽	RETURN/EXHAUST
(A)-1	STROBE AUDIO/VISUAL ALARM-ANNUNCIATOR	⊠	SUPPLY DIFFUSER (TYP.)
12x18	DUCT SIZE (REVERSE FOR ELEVATION VIEWS): 1ST NUMBER - HORIZONTAL DIMENSION 2ND NUMBER - VERTICAL DIMENSION	①	PLAN NOTE REFERENCE
AC#1	AIR CONDITIONING UNIT #1 (TYP.)	CF#1	CIRCULATING FAN
→	MANUAL VOLUME DAMPER	SD	SMOKE DETECTOR
CO2	CO2 SENSOR	AD#1	AIR DOOR#1 (TYP.)
		CP	CONTROL PANEL

FLEX DUCT SIZE

RANGE	SIZE	RANGE	SIZE
0-80 CFM	6" DIA.	511-750 CFM	14" DIA.
81-170 CFM	8" DIA.	701-1100 CFM	16" DIA.
171-300 CFM	10" DIA.	1101-1450 CFM	18" DIA.
301-510 CFM	12" DIA.	1451-1900 CFM	20" DIA.

NOTES:

- BASED ON WIRE HELIX FLEXIBLE DUCT, TYPE FLEX-MASTER.
- UL LISTING: UL-981 ETL CLASS 1 AIR DUCT.
- STANDARD CODE: NFPA 90A AND 90B, 90CA, 90CB, 90CD, 90CE, 90CF, 90CG, 90CH, 90CI, 90CJ, 90CK, 90CL, 90CM, 90CN, 90CO, 90CP, 90CQ, 90CR, 90CS, 90CT, 90CU, 90CV, 90CW, 90CX, 90CY, 90CZ.
- FLAME SPREAD... LESS THAN 25
- SMOKE DEVELOP... LESS THAN 50
- MIN R6.0 FOR ATTIC/UNCONDITION SPACE.
- MANUFACTURER IS TO BE USED AS A BASIS FOR DESIGN. CONTACT ENGINEER FOR RECORD TO SUBMIT ON APPROVED EQUALS.

NOTE:
 REFER TO SCHEDULES AND DETAILS MECHANICAL SHEET FOR FURTHER INFORMATION.

NOTE:
 MECHANICAL CONTRACTOR TO PROVIDE TEST AND BALANCE REPORT BEFORE FINAL INSPECTION.

NOTE:
 ALL NEW HOODS SHALL BE RATED WITH ONE INCH THICK LAYER OF FACTORY INSTALLED INSULATION TO MEET "ZERO INCH CLEARANCE" TO COMBUSTIBLE MATERIALS. HOOD SHALL BE CERTIFIED BY ETL SPECIFICATIONS, AND SHALL CONFORM TO UL STANDARD 710, BUILT PER NFPA 96 SECTION 4.2.2., AND NSF LISTED. REFER TO SHEET MH-101.

NOTE:
 IF BALANCING DAMPERS ARE NOT EXISTING IN THE BRANCH DUCT OR AT THE TAKE-OFF, MECHANICAL CONTRACTOR SHALL SUPPLY AND INSTALL NEW BALANCING DAMPERS WITHIN THE BRANCH DUCT (TYPICAL).

OMD CANOPY NOTE

REFER TO SHEET M-601 FOR FURTHER INFORMATION REGARDING CANOPY SCOPE. MECHANICAL CONTRACTOR TO PURCHASE AND MOUNT NEW CIRCULATION FANS. COORDINATE EXACT NUMBER OF FANS WITH CANOPY MANUFACTURER.

NOTE:
 GENERAL CONTRACTOR TO HIRE REFRIGERATION CONTRACTOR TO RECLAIM REFRIGERANT FROM EXISTING FREEZER/COOLER ICE MAKERS AND RECHARGE EXISTING ICE MAKERS AFTER EQUIPMENT IS REINSTALLED. REFER TO KEY NOTES #2 AND #5 ON SHEET M-101.

HVAC GENERAL NOTES

- DUCT SIZES SERVING DIFFUSERS AND GRILLES ARE SAME SIZE AS DIFFUSER OR GRILLE NECK UNLESS NOTED OTHERWISE.
- MECHANICAL CONTRACTOR SHALL BALANCE HVAC SYSTEM AS SHOWN ON THE PLAN & RTU SCHEDULE. IF AIR FLOWS DIFFER BY MORE THAN 5%, CONTACT CFA CONSTRUCTION MANAGER.
- NO PIPING OR DUCTWORK ALLOWED ABOVE ANY ELECTRICAL/CONTROL PANELS.
- COORDINATE NEW WORK WITH EXISTING CONDUITS, STRUCTURE, & PIPING. FIELD VERIFY EXISTING CONDITIONS PRIOR TO COMMENCING WORK. CONTRACTOR TO NOTIFY DESIGN TEAM WITHOUT DELAY IF ACTUAL LOCATION OF EXISTING MECHANICAL EQUIPMENT DOES NOT MATCH FLOOR PLAN.
- CONTRACTOR SHALL CLEAN & REFURBISH ALL EXISTING DUCTWORK. PATCH & REPAIR OPENING AIR TIGHT OF EXISTING DUCTWORK AS REQUIRED (TYPICAL ALL). FIELD VERIFY AND COORDINATE ALL EXISTING HVAC SIZES, LOCATIONS, AND CONDITION PRIOR TO BID.
- REUSE AND REWORK EXISTING HVAC DUCTWORK. PROVIDE NEW SECTION FOR RECONNECTION AS REQUIRED. FIELD VERIFY ALL REQUIREMENTS PRIOR TO BID.
- CONTRACTOR SHALL BALANCE, INSPECT, REPAIR, OR REPLACE AS NECESSARY IF REQUIRED FOR EXISTING CEILING OR SIDEWALL MOUNTED AIR DEVICES TO REMAIN. FIELD VERIFY AND COORDINATE EXACT SIZE, AIR QUANTITY, LOCATION, AND CONDITION PRIOR TO BID. AIR FLOW SHALL REMAIN AS IS UNLESS NOTED ON PLAN, OR DIRECTED BY CONSTRUCTION MANAGER. ANY DEFICIENCIES AND OR DISCREPANCIES SHALL BE REPORTED TO ARCHITECT/ENGINEER IMMEDIATELY. COORDINATE AIR BALANCE RESULTS WITH CONSTRUCTION MANAGER.
- FLEXIBLE DUCT NOT SHOWN FOR CLARITY. ALL TAKE-OFFS SHALL INCLUDE FLEXIBLE DUCT. SEE DETAIL 1/M-401 FOR FLEXIBLE DUCT INSTALLATION REQUIREMENTS.
- UNLESS NOTED OTHERWISE, MC TO ADJUST ALL DIFFUSER AIR PATTERN DEFLECTORS TO THROW HORIZONTALLY ALONG THE CEILING.
- SUPPORT ALL DUCT DROPS AT BASE OF DROP FROM STRUCTURE.

HVAC KEY NOTES

- TRANSITION IN VERTICAL DROP FROM FULL SIZE OF CURB OPENING TO SIZE SHOWN. TRANSITION WITHIN THE CURB WHERE REQUIRED TO AVOID STRUCTURE. NO TURNING VANES IN ELBOW, FOR RETURN AIR ONLY.
- NOTE NOT USED.
- PROVIDE NEW KITCHEN HOOD EXHAUST FAN WITH NEW CURB LOCATION SHOWN ON PLAN. LOCATE A MINIMUM OF 10 FT FROM PARAPET WALLS OR FROM ANY NEW OR EXISTING OUTSIDE AIR INTAKE. COORDINATE THE EXACT LOCATION IN THE FIELD WITH EXISTING EQUIPMENT AND PIPING. SEE THE DETAIL ON M-401 FOR THE ORIENTATION OF THE HINGE SIDE OF THE FAN ON THE CURB.
- CJ-3 MOUNTED INSIDE CABINETS SERVING SCJ PLENUM. SEE DETAIL ON MH-101.
- NEW SUPPLY AIR DIFFUSERS. THE CONTRACTOR SHALL EXTEND THE EXISTING SUPPLY AIR DUCT AS REQUIRED. CFM IS EXISTING TO REMAIN.
- NEW RETURN AIR GRILLES. THE CONTRACTOR SHALL EXTEND THE EXISTING RETURN AIR DUCT AS REQUIRED. CFM IS EXISTING TO REMAIN.
- STRONG SYSTEMS SHALL SUPPLY AND INSTALL CO2 SENSOR ANALOX-AX60. SENSOR SHALL BE MOUNTED AT 12" AFF WITH SPLASH GUARD AND CAGE. ELECTRICAL CONTRACTOR: PROVIDE SINGLE-GANG J-BOX WITH 1/2" CONDUIT EXTENDED TO ABOVE ACCESSIBLE CEILING SPACE. INSTALL PER MANUFACTURER'S RECOMMENDATIONS AND PER LOCAL CODE REQUIREMENTS. FIELD VERIFY THE EXACT LOCATION AND ALL REQUIREMENTS PRIOR TO BIDDING AND CONSTRUCTION. FOR MORE INFORMATION CONTACT: STRONG SYSTEMS INTERNATIONAL, INC. CHRIS VERCH (770) 729-1199 OR (770) 462-2501.
- STRONG SYSTEMS SHALL SUPPLY AND INSTALL CO2 ANNUNCIATOR MOUNTED AT 60" AFF. ELECTRICAL CONTRACTOR: PROVIDE SINGLE-GANG J-BOX WITH 1/2" CONDUIT EXTENDED TO ABOVE ACCESSIBLE CEILING SPACE. INSTALL PER MANUFACTURER'S RECOMMENDATIONS AND PER LOCAL CODE. FIELD VERIFY THE EXACT LOCATION AND ALL REQUIREMENTS PRIOR TO BIDDING AND CONSTRUCTION. FOR MORE INFORMATION CONTACT: STRONG SYSTEMS INTERNATIONAL, INC. CHRIS VERCH (770) 729-1199 OR (770) 462-2501.

- YOUNG REGULATOR ROUND ZONE DAMPER WITH MODEL T-312CE AUTOMATIC CHANGE-OVER THERMOSTAT. MOUNT CENTER OF T-STAT AT 4'-0" AFF. POWER OPEN/SPRING CLOSE. ADJUST MECHANICAL LIMIT FOR 75 CFM MINIMUM AIRFLOW. PROVIDE 120V/24V, 50 VA TRANSFORMER TO SERVE ZONE DAMPER ACTUATOR AND THERMOSTAT. POWERED FROM 120V POWER CIRCUIT THAT REMAINS LIVE 24/7. PROVIDE ALL NECESSARY WIRING AND COMPONENTS FOR CONTROL AND POWER CONNECTIONS PER MANUFACTURER'S IOM. THERE IS NO INTERLOCKING/MONITORING FROM THE S.E.C. CFA-500 PANEL. SEE WIRING DIAGRAMS ON M-501. CHICK-FIL-A HAS A NATIONAL ACCOUNT W/ TOM BARRON COMPANY FOR THE ZONE DAMPER. THE MECHANICAL CONTRACTOR SHALL PURCHASE THE ZONE DAMPER DIRECTLY FROM TOM BARRON COMPANY. CONTACT MR. SCOTT GEORGE AT 404-351-1010. FOR PRICING AND AVAILABILITY. ZONE DAMPERS NOT PURCHASED THRU TOM BARRON COMPANY WILL NOT BE ACCEPTED.
- MOUNT THE NEW/EXISTING LENNOX HUMIDITY SENSOR ON THE WALL ABOVE THE SPACE TEMP SENSOR AND ROUTE NEW WIRING TO THE UNIT ON THE ROOF. PROVIDE NEW CONTROL WIRE TO ACCOMMODATE LOCATION, DO NOT SPLICE WIRE.
- MOUNT A NEW REMOTE TEMPERATURE SENSOR ON THE WALL AT 60" AFF AND ROUTE NEW WIRING BACK TO THE TEMP CONTROL PANEL. FOR SENSOR SERVING KITCHEN AC#1, COORDINATE THE EXACT LOCATION WITH KITCHEN EQUIPMENT PRIOR TO BID AND CONSTRUCTION.
- PROVIDE LENNOX FACTORY INSTALLED SUPPLY SIDE & RETURN SIDE SMOKE DETECTORS. REFER TO SCHEDULE ON SHEET M-402 AND LENNOX SMOKE DETECTOR AND ANNUNCIATOR WIRING DIAGRAM ON SHEET M-501.
- STRONG SYSTEMS SHALL SUPPLY AND INSTALL CO2 CENTRAL CONTROL UNIT MOUNTED AT 60" AFF. ELECTRICAL CONTRACTOR: PROVIDE SINGLE-GANG J-BOX WITH 1/2" CONDUIT EXTENDED TO ABOVE ACCESSIBLE CEILING SPACE. INSTALL PER MANUFACTURER'S RECOMMENDATIONS AND PER LOCAL CODE. FIELD VERIFY THE EXACT LOCATION AND ALL REQUIREMENTS PRIOR TO BID AND CONSTRUCTION. COORDINATE WITH ELECTRICAL DRAWING E2.2 FOR EXACT LOCATION. FOR MORE INFORMATION CONTACT: STRONG SYSTEMS INTERNATIONAL, INC. CHRIS VERCH (770) 729-1199 OR (770) 462-2501.
- (2) 28x20 SUPPLY AIR RTU DROP AND (1) 60x15 RETURN AIR DROP FROM NEW KITCHEN AC#1
- SUPPLY AIR DUCT ROUTED BELOW BAR JOIST AS HIGH AS POSSIBLE. BRANCH TAKE-OFFS ARE NOT TO BE LOCATED CLOSER THAN 3'-0" FROM ANY OFFSET OR ELBOW, INCLUDING THE SA DROP FROM THE CURB.
- 60"x18" RETURN AIR PLENUM AS CLOSE AS POSSIBLE TO BOTTOM OF ROOF JOIST.
- 16"Ø SIDE TAP RETURN AIR PLENUM WITH SPIN-IN FITTINGS AND DAMPER. REFER TO THE AIR DEVICE SCHEDULE FOR FURTHER INFORMATION.
- CONTRACTOR SHALL INSTALL AND ROUTE NEW INSULATED REFRIGERANT PIPING FROM ROOF-MOUNTED REMOTE CONDENSER TO FREEZER & COOLER EVAPORATORS.

- 20"x18" SUPPLY AIR RTU DROP TO 16"x14" AND 29"x11" RETURN AIR DROP FROM NEW AC#6 UNIT.
- AIR CURTAIN (AD#1) MOUNTED WITHIN THE CEILING CENTERED ABOVE THE DRIVE-THRU DOOR 6" FROM THE EXTERIOR WALL AND (AD#3) MOUNTED WITHIN THE CEILING CENTERED ABOVE THE DRIVE-THRU DOOR 1'-6" FROM THE EXTERIOR WALL. PROVIDE AIR DIVERTER CONE ABOVE DOOR FOR (AD#1). REFER TO SHEET M-401 FOR INFORMATION. ATTACH AIR CURTAIN TO STRUCTURE USING 3/8" ALL THREAD SUPPORTS.
- FIELD WIRE FACTORY PROVIDED CONTROLS. SEE KITCHEN ELEVATIONS FOR THE EXACT LOCATION OF THE SWITCH. MC IS RESPONSIBLE FOR ALL FINAL CONNECTIONS FOR LOW VOLTAGE INTERLOCK WITH THE TORMAX DOOR. REFER TO SHEET M-501 FOR INFORMATION.
- AIR DOOR MOUNTED OVER DOOR HEADER AT 7'-4" AFF TO BOTTOM OF UNIT. PROVIDE BLOCKING IN THE WALL BEHIND AIR CURTAIN. USE FACTORY PRE-PUNCHED MOUNTING HOLES ON THE BACK SIDE OF THE AIR CURTAIN ONLY. ATTACH AIR CURTAIN TO WALL USING 3/8" LAG BOLTS. LENGTH AS REQUIRED TO FULLY PENETRATE BLOCKING. LOCATE MAGNETIC CONTACT TYPE MICROSWITCH IN DOOR FRAME ON STRIKE SIDE.
- NEW EXHAUST AIR DEVICE. THE CONTRACTOR SHALL EXTEND EXISTING EXHAUST AIR DUCT AS REQUIRED. CFM IS EXISTING TO REMAIN.
- MECHANICAL CONTRACTOR TO ADJUST PATTERN DEFLECTORS TO THROW STRAIGHT DOWN.
- NEW SPLIT SYSTEM AIR HANDLER. COORDINATE LOCATION WITH KITCHEN EQUIPMENT CONTRACTOR AND ELECTRICAL CONTRACTOR.
- NEW RETURN AIR DEVICE. CONTRACTOR TO EXTEND EXISTING RA DUCT AS REQUIRED. BALANCE TO 835 CFM EACH.
- LOCATE NEW SENSOR(S) AT THIS LOCATION. REFER TO KEY NOTES #10 & #11 FOR INSTALLATION INFORMATION.
- NEW SUPPLY AIR DEVICE. THE CONTRACTOR SHALL EXTEND THE EXISTING SUPPLY AIR DUCT AS REQUIRED. BALANCE TO 700 CFM.
- NOTE NOT USED.
- EXISTING AC#2 TRUNK DUCT SHOWN FOR REFERENCE ONLY.

- NOTE NOT USED.
- EXISTING TRUNK DUCT FOR AC#3 SHOWN FOR REFERENCE ONLY. EXTEND BRANCH DUCTS SIMILARLY TO SERVE NEW SPACES. EXISTING AIR FLOW TO REMAIN.

CHICK-FIL-A
 CLEVELAND
 25 W. UNDERWOOD STREET
 CLEVELAND, GA 30528

FSR#02913
 BUILDING TYPE / SIZE: BUILD - TO-SUIT
 RELEASE: 22.05

REVISION SCHEDULE

NO.	DATE	DESCRIPTION
1	02-22-2024	PERMIT
2	10-07-2024	PERMIT REV 1
1	10-07-2024	PERMIT REV 2

CONSULTANT PROJECT # C291104
 PRINTED FOR PERMIT
 DATE 02/21/2024
 DRAWN BY JRH
 Information contained on this drawing and in all digital files produced for above named project may not be reproduced in any manner without the express written or verbal consent from authorized project representatives.
MECHANICAL FLOOR PLAN
 SHEET NUMBER
M-201

Autodesk Docs://CA_02913_Cleveland_FSU_2022_10_REI02913_CFA_Cleveland_CPH_Mech_Remodel.rvt
 10/3/2024 2:45:59 PM
 30-02913-M-201-MECHANICAL FLOOR PLAN