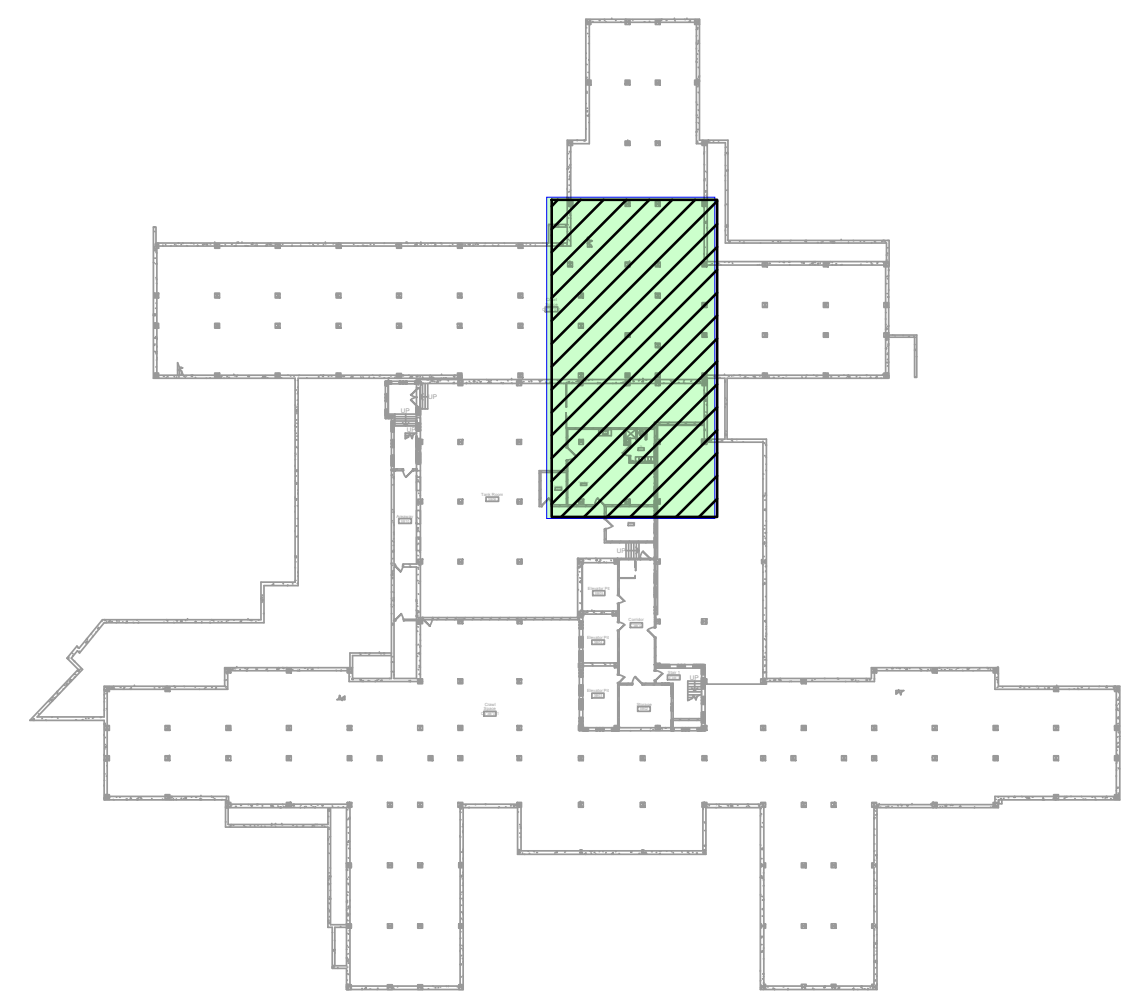
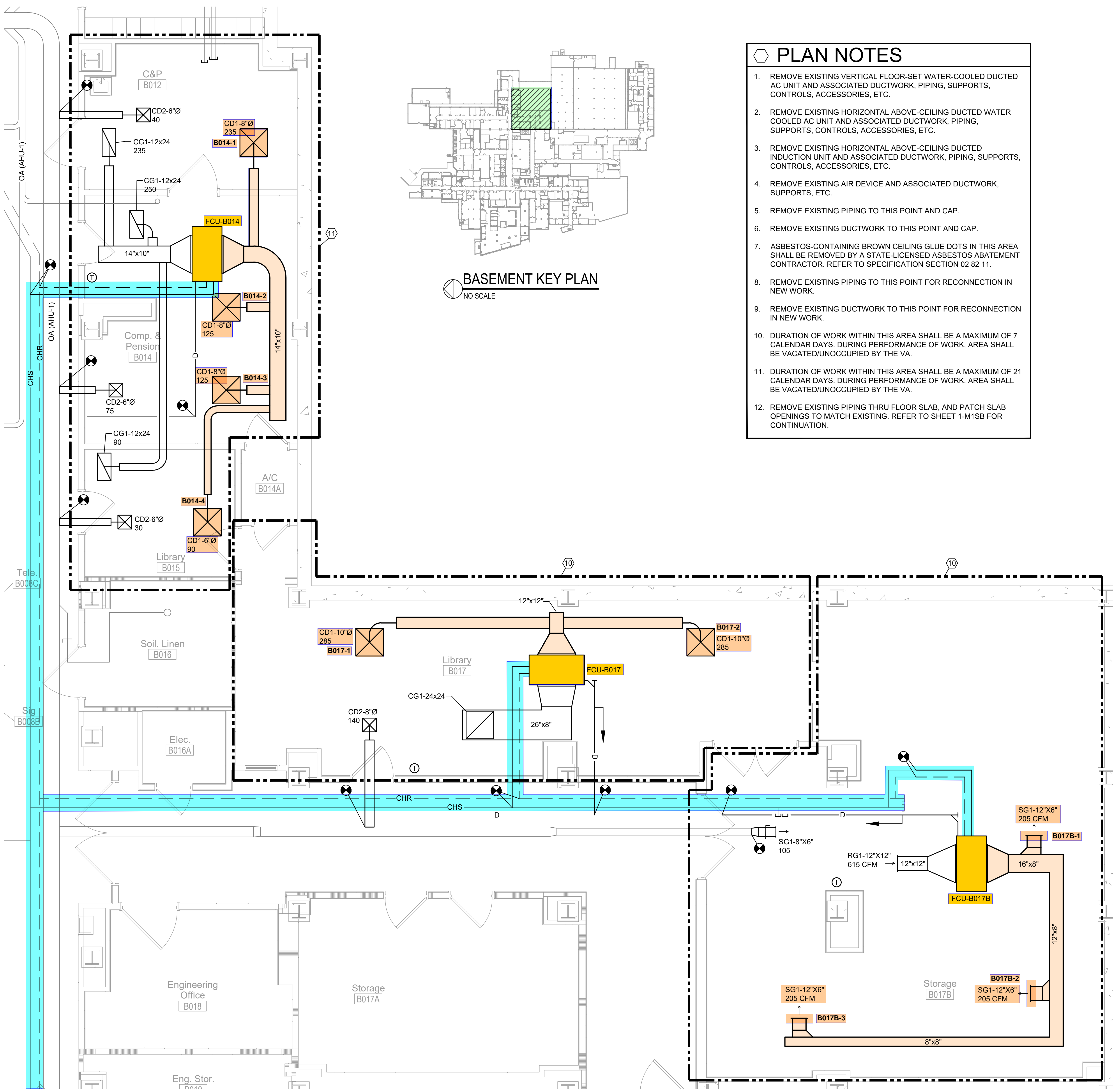


**SUB-BASEMENT PLAN - BUILDING 1 - NEW WORK**  
 SCALE: 1/4" = 1'-0"



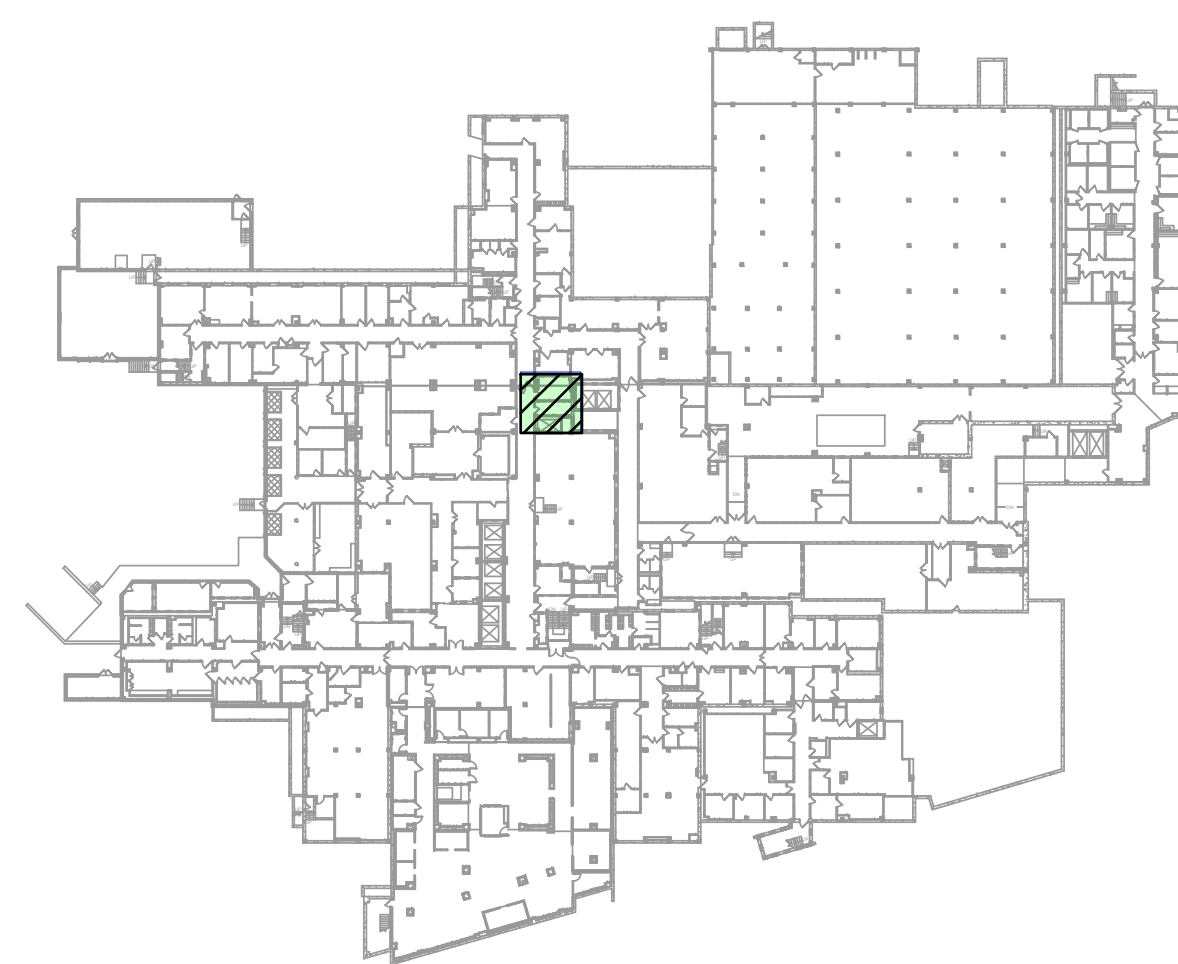
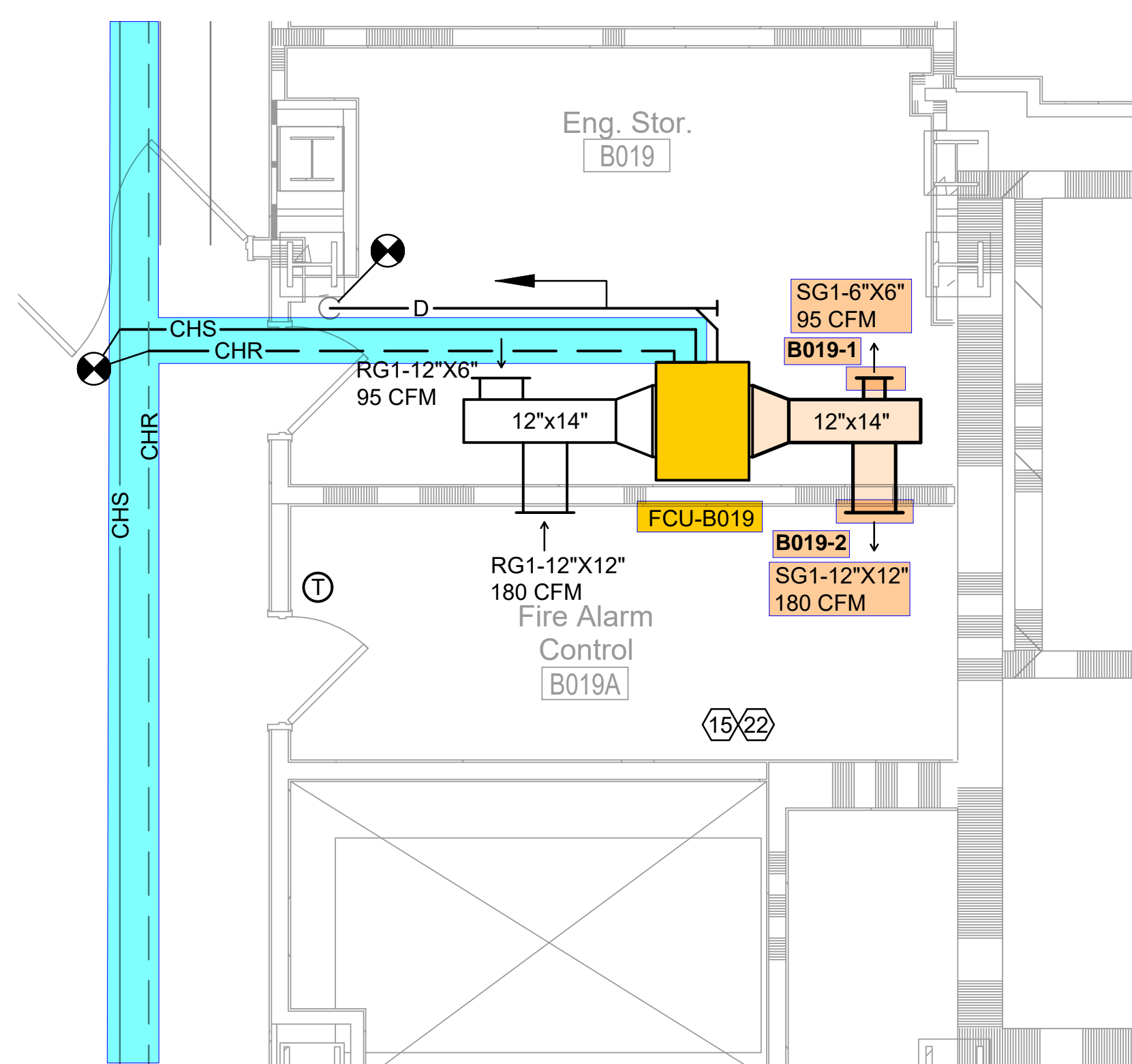
**SUB-BASEMENT KEY PLAN**  
 NO SCALE

- | PLAN NOTES |  |
|------------|--|
| ⑤          | REMOVE EXISTING PIPING TO THIS POINT AND CAP.  |
|            | REMOVE EXISTING VERTICAL FLOOR-SET WATER-COOLED AC UNIT AND ASSOCIATED PIPING, SUPPORTS, CONTROLS, ACCESSORIES, ETC. |
|            | REFER TO SHEET 1-M100A FOR CONTINUATION.   |
|            | REFER TO SHEET 1-M100B FOR CONTINUATION.   |
|            | ROUTE CONDENSATE PIPE THRU WALL AND SPILL INTO EXISTING DRAIN TROUGH IN ADJACENT ROOM.                               |



- ### PLAN NOTES
1. REMOVE EXISTING VERTICAL FLOOR-SET WATER-COOLED DUCTED AC UNIT AND ASSOCIATED DUCTWORK, PIPING, SUPPORTS, CONTROLS, ACCESSORIES, ETC.
  2. REMOVE EXISTING HORIZONTAL ABOVE-CEILING DUCTED WATER COOLED AC UNIT AND ASSOCIATED DUCTWORK, PIPING, SUPPORTS, CONTROLS, ACCESSORIES, ETC.
  3. REMOVE EXISTING HORIZONTAL ABOVE-CEILING DUCTED INDUCTION UNIT AND ASSOCIATED DUCTWORK, PIPING, SUPPORTS, CONTROLS, ACCESSORIES, ETC.
  4. REMOVE EXISTING AIR DEVICE AND ASSOCIATED DUCTWORK, SUPPORTS, ETC.
  5. REMOVE EXISTING PIPING TO THIS POINT AND CAP.
  6. REMOVE EXISTING DUCTWORK TO THIS POINT AND CAP.
  7. ASBESTOS-CONTAINING BROWN CEILING GLUE DOTS IN THIS AREA SHALL BE REMOVED BY A STATE-LICENSED ASBESTOS ABATEMENT CONTRACTOR. REFER TO SPECIFICATION SECTION 02 82 11.
  8. REMOVE EXISTING PIPING TO THIS POINT FOR RECONNECTION IN NEW WORK.
  9. REMOVE EXISTING DUCTWORK TO THIS POINT FOR RECONNECTION IN NEW WORK.
  10. DURATION OF WORK WITHIN THIS AREA SHALL BE A MAXIMUM OF 7 CALENDAR DAYS. DURING PERFORMANCE OF WORK, AREA SHALL BE VACATED/UNOCCUPIED BY THE VA.
  11. DURATION OF WORK WITHIN THIS AREA SHALL BE A MAXIMUM OF 21 CALENDAR DAYS. DURING PERFORMANCE OF WORK, AREA SHALL BE VACATED/UNOCCUPIED BY THE VA.
  12. REMOVE EXISTING PIPING THRU FLOOR SLAB, AND PATCH SLAB OPENINGS TO MATCH EXISTING. REFER TO SHEET 1-M1SB FOR CONTINUATION.

**BASEMENT FLOOR PLAN - NEW WORK**  
 SCALE: 1/4" = 1'-0"

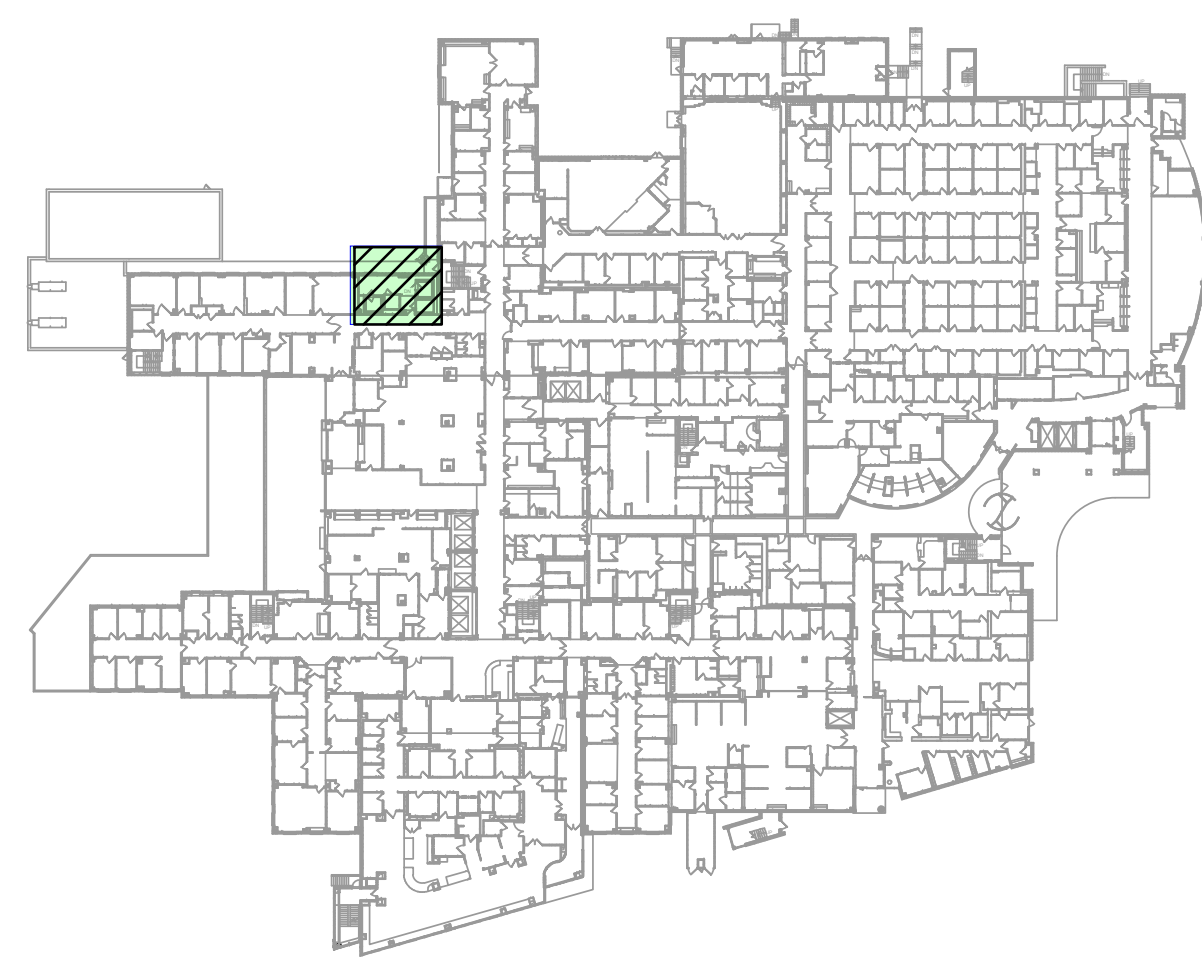


**BASEMENT KEY PLAN**  
NO SCALE

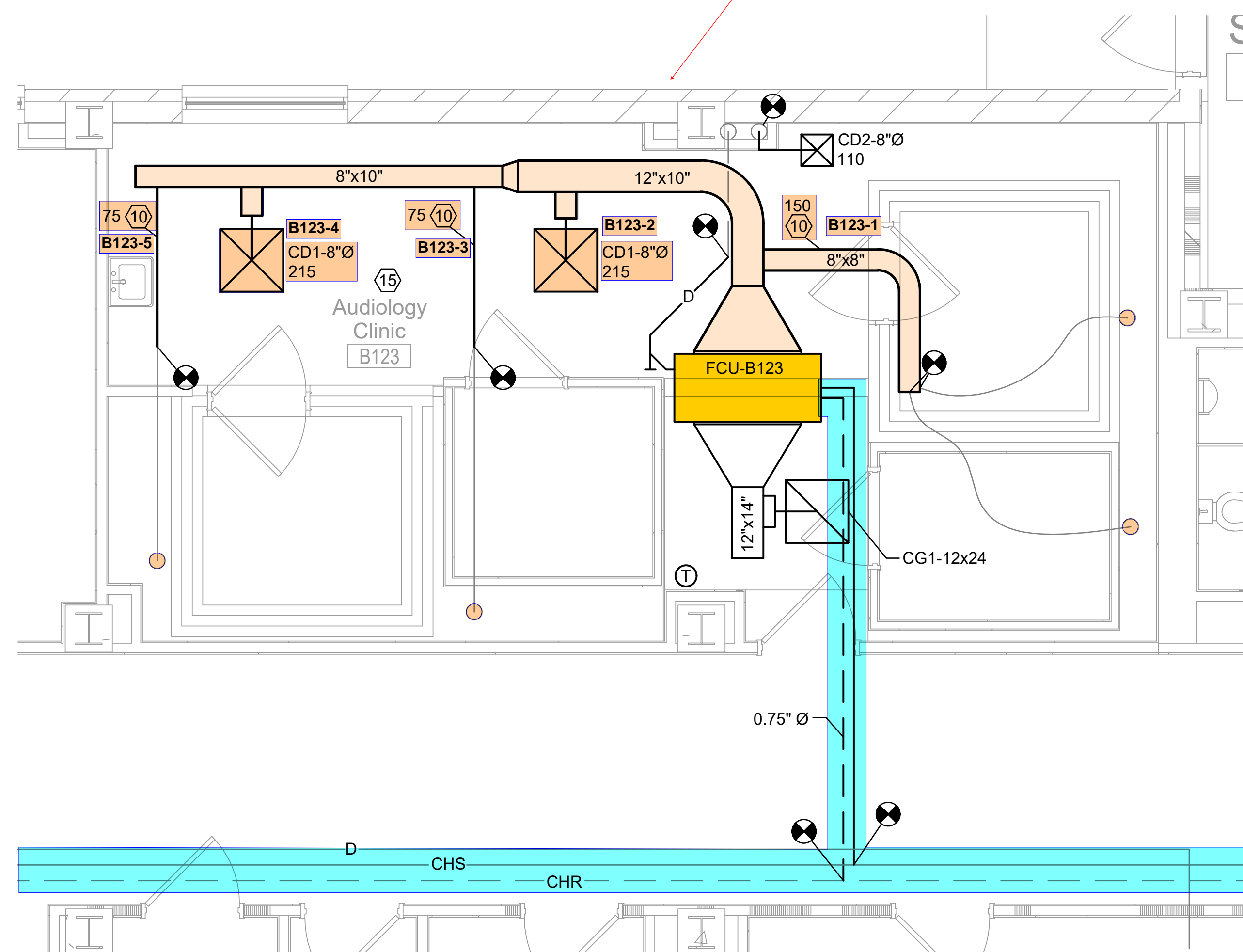
**BASEMENT FLOOR PLAN**  
SCALE: 1/4" = 1'-0"

**PLAN NOTES**

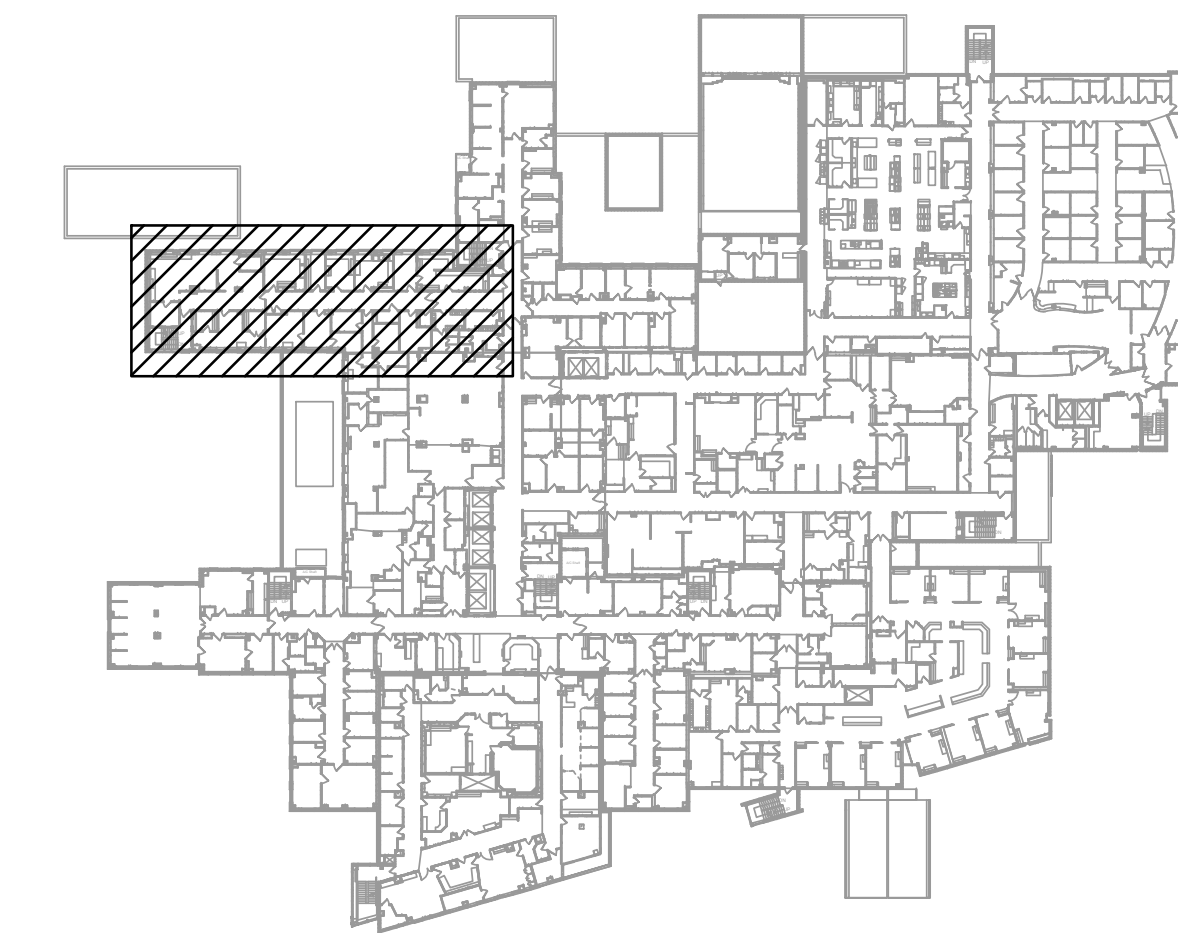
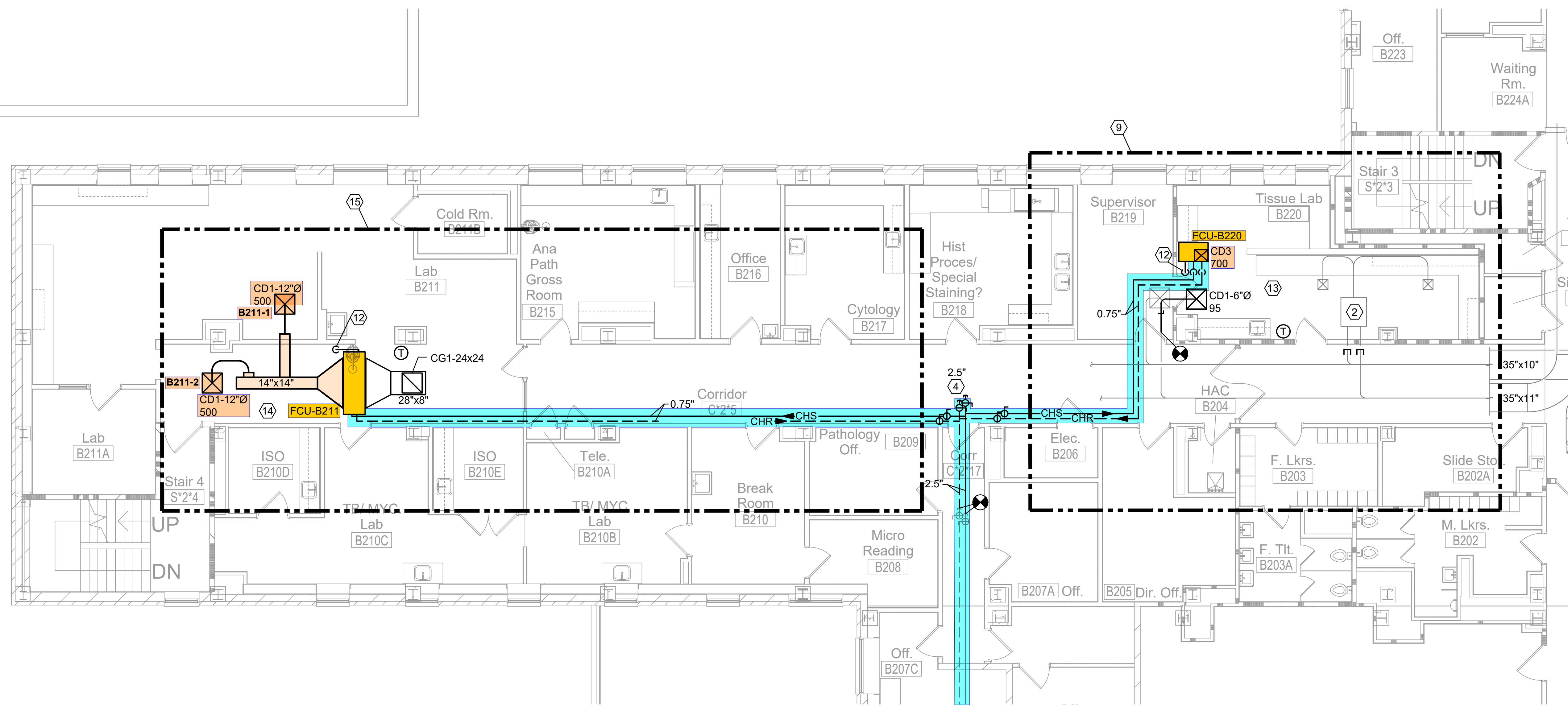
1. REMOVE EXISTING WATER-COOLED CHILLER AND ASSOCIATED PIPING, SUPPORTS, CONTROLS, ACCESSORIES, ETC.
2. CONNECT TO EXISTING VALVED SUPPLY AND RETURN PIPE STUBS AT THIS LOCATION.
3. EXTEND AND CONNECT FACILITY CHILLED WATER PIPING TO EXISTING CONDENSERS TO SERVE AS PRIMARY CONDENSER WATER SOURCE, WITH VALVED DOMESTIC WATER CONNECTION AS BACKUP. REFER TO PIPING DETAIL ON SHEET M502.
4. REMOVE EXISTING HORIZONTAL SUSPENDED DUCTED WATER COOLED AC UNIT AND ASSOCIATED DUCTWORK, PIPING, SUPPORTS, CONTROLS, ACCESSORIES, ETC.
5. REMOVE EXISTING DUCT BACK TO THIS POINT FOR RECONNECTION IN NEW WORK.
6. REMOVE EXISTING DX SPLIT SYSTEM INDOOR UNIT AND ASSOCIATED DUCTWORK, PIPING, SUPPORTS, CONTROLS, ACCESSORIES, ETC.
7. REMOVE EXISTING AIR-COOLED CHILLER ON GRADE AND ASSOCIATED PIPING, SUPPORTS, CONTROLS, ACCESSORIES, ETC.
8. REMOVE EXISTING DX SPLIT SYSTEM AIR-COOLED CONDENSING UNIT IN AREA WELL, AND ASSOCIATED PIPING, SUPPORTS, CONTROLS, ACCESSORIES, ETC.
9. REMOVE EXISTING PIPING TO THIS POINT AND CAP.
10. **BALANCE THIS DUCT BRANCH TO CFM INDICATED.**
11. REMOVE EXISTING DUCT AND ASSOCIATED ACCESSORIES, SUPPORTS, ETC.
12. REMOVE EXISTING AIR DEVICE AND ASSOCIATED RUNOUT DUCTWORK.
13. EXISTING DUCTWORK TO REMAIN.
14. BLACK TAR WRAP/TAPE IN THIS AREA SHALL BE REMOVED BY A STATE-LICENSED ASBESTOS ABATEMENT CONTRACTOR. REFER TO SPECIFICATION SECTION 02 82 11.
15. DURATION OF WORK WITHIN THIS AREA SHALL BE A MAXIMUM OF 7 CALENDAR DAYS. DURING PERFORMANCE OF WORK, ROOM SHALL BE VACATED/UNOCCUPIED BY THE VA.
16. REFER TO ROOM B020 PLAN ON THIS SHEET FOR CONTINUATION.
17. REFER TO ROOM B019 PLAN ON THIS SHEET FOR CONTINUATION.
18. REMOVE EXISTING PIPING BACK TO THIS POINT FOR RECONNECTION IN NEW WORK.
19. EXISTING PIPING TO REMAIN.
20. REMOVE EXISTING STEAM CONVECTOR AND ASSOCIATED CONTROLS, ACCESSORIES, ETC.
21. EXISTING CONDENSERS ASSOCIATED WITH CANTEEN WALK-IN COOLER AND FREEZER TO REMAIN.
22. PROVIDE TEMPORARY COOLING UNIT IN THIS SPACE DURING FCU REPLACEMENT, TO ENSURE NO DOWNTIME OF SPACE COOLING. TEMPORARY COOLING UNIT MAY BE AIR-COOLED, WATER-COOLED, OR CHILLED WATER TYPE. DOOR TO ROOM SHALL REMAIN LOCKED WHEN UNATTENDED.



**1ST FLOOR KEY PLAN**  
NO SCALE



**FIRST FLOOR PLAN - NEW WORK**  
SCALE: 1/4" = 1'-0"

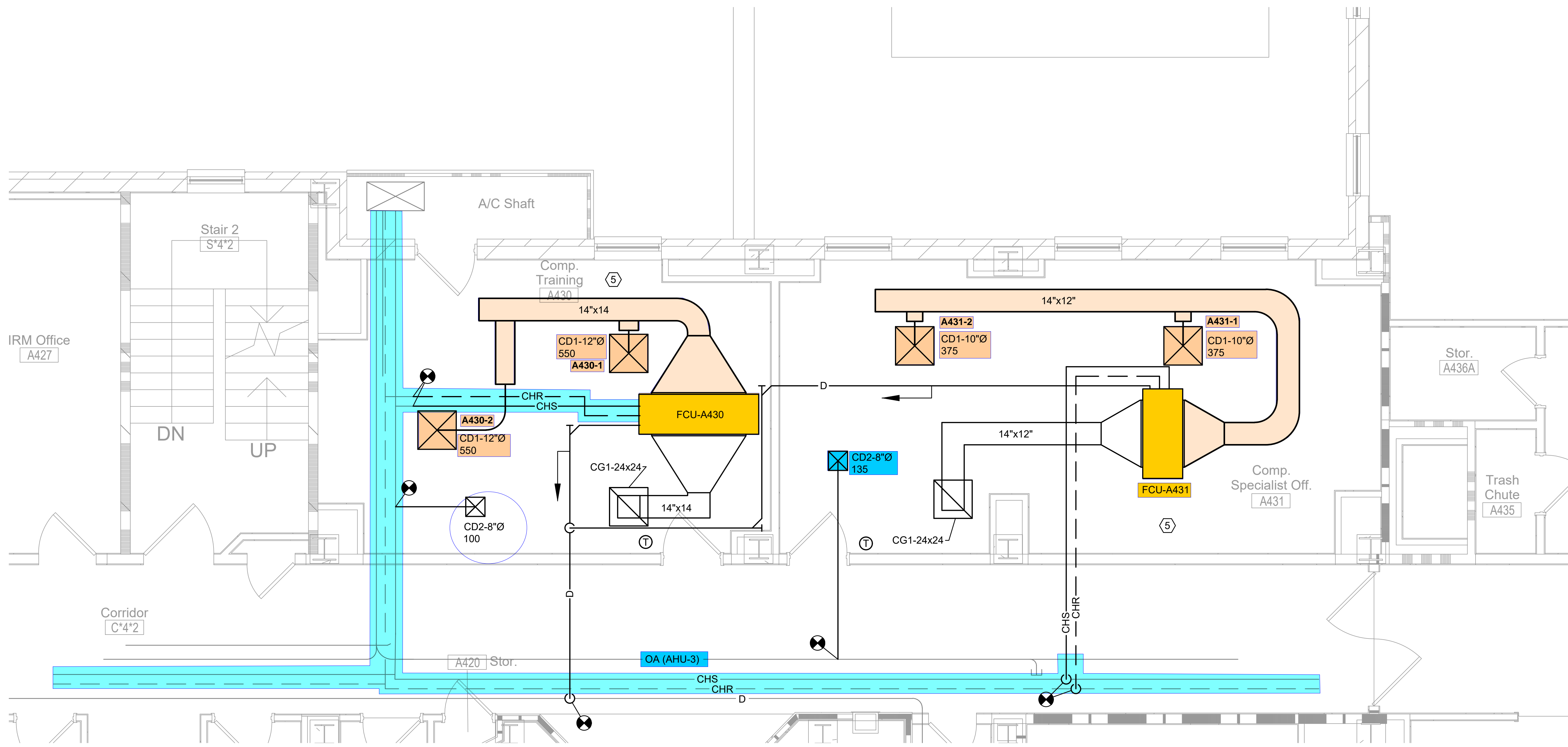


2ND FLOOR KEY PLAN  
NO SCALE

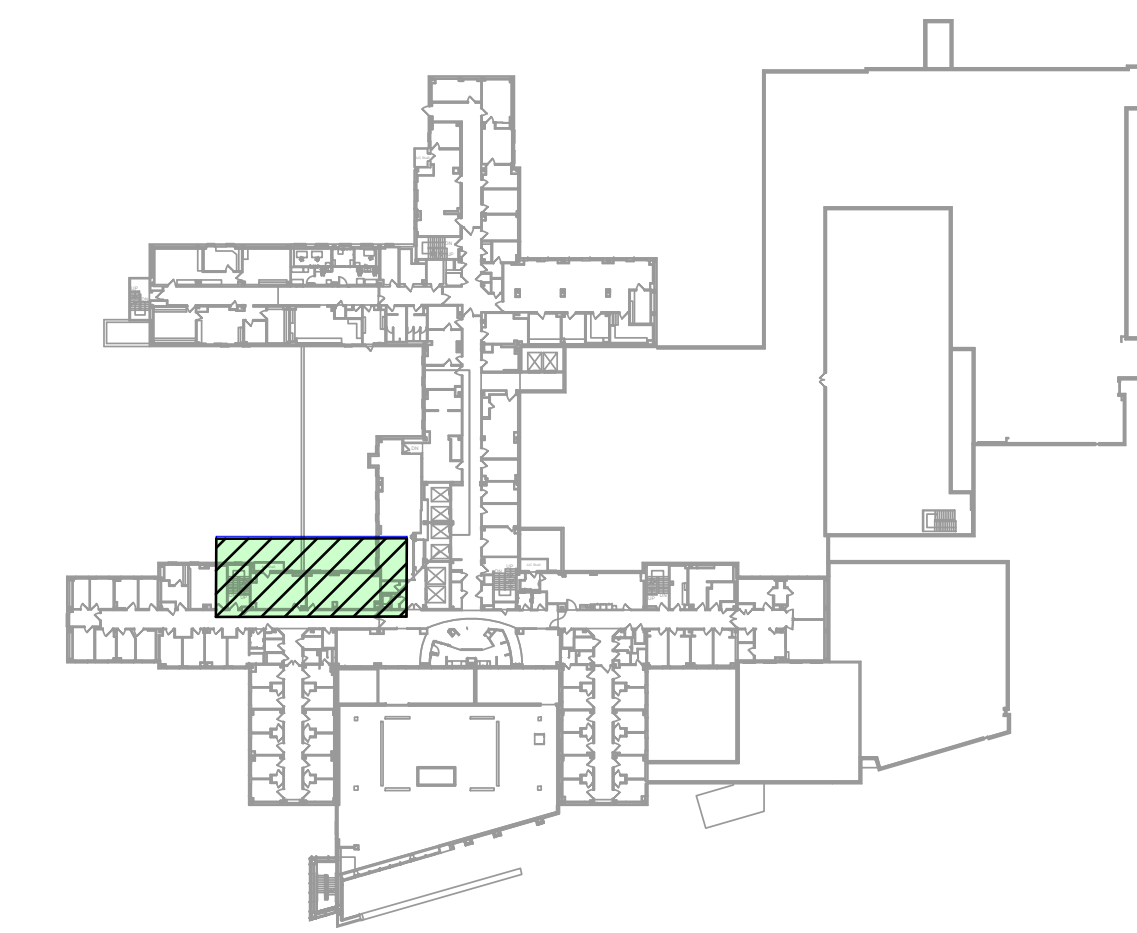
**SECOND FLOOR PLAN - NEW WORK**  
SCALE: 1/8" = 1'-0"

**PLAN NOTES**

1. REMOVE EXISTING VERTICAL FLOOR-SET WATER-COOLED AC UNIT AND ASSOCIATED DUCTWORK, PIPING, SUPPORTS, CONTROLS, ACCESSORIES, ETC.
  2. EXISTING DUAL DUCT TERMINAL UNIT AND ASSOCIATED DUCTWORK, SUPPORTS, CONTROLS, ACCESSORIES, ETC. TO REMAIN.
  3. REMOVE EXISTING AIR DEVICE AND ASSOCIATED RUNOUT DUCTWORK.
  4. PROVIDE VALVED AND CAPPED PIPE STUBS FOR FUTURE CONTINUATION.
  5. REMOVE EXISTING DUCT TO THIS POINT FOR RECONNECTION IN NEW WORK.
  6. REMOVE EXISTING DUCT TO THIS POINT, CAP AND SEAL AIRTIGHT.
  7. EXISTING DUCT AND ASSOCIATED SUPPORTS, ACCESSORIES, ETC. TO REMAIN.
  8. ASBESTOS-CONTAINING BROWN MASTIC ON DUCT WORK IN THIS AREA SHALL BE REMOVED BY A STATE-LICENSED ASBESTOS ABATEMENT CONTRACTOR. REFER TO SPECIFICATION SECTION 02 82 11.
9. WORK WITHIN THIS AREA SHALL BE DELETED FROM THE SCOPE OF THE PROJECT UNDER BID ITEM #2 (DEDUCT ALTERNATE #1).
10. EXISTING FLOOR DRAIN TO REMAIN.
  11. REMOVE EXISTING WALL MOUNTED THERMOSTAT ASSOCIATED WITH WATER-COOLED AC UNIT.
  12. ROUTE CONDENSATE DRAIN PIPING DOWN INTO EXISTING FLOOR DRAIN.
  13. DURATION OF WORK WITHIN THIS AREA SHALL BE A MAXIMUM OF 7 CALENDAR DAYS. DURING PERFORMANCE OF WORK, AREA SHALL BE VACATED/UNOCCUPIED BY THE VA.
  14. REFER TO ARCHITECTURAL DRAWINGS FOR TEMPORARY PARTITIONS ASSOCIATED WITH WORK IN THIS AREA.
15. WORK WITHIN THIS AREA SHALL BE DELETED FROM THE SCOPE OF THE PROJECT UNDER BID ITEM #3 (DEDUCT ALTERNATE #2).
16. REMOVE EXISTING DOMESTIC COLD WATER PIPING TO THIS POINT AND CAP.
  17. EXISTING AIR DEVICE AND ASSOCIATED RUNOUT DUCTWORK TO REMAIN.



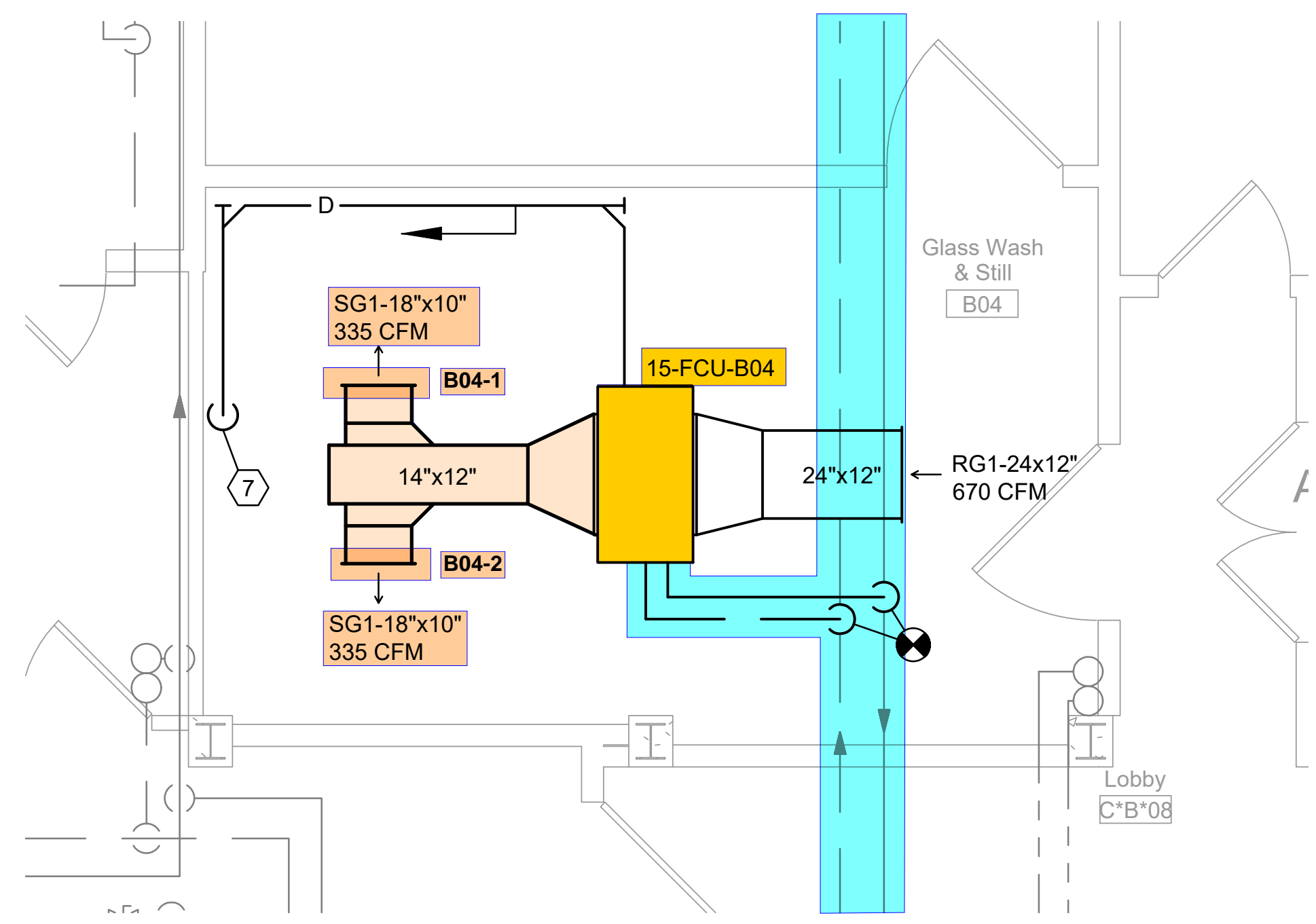
**FOURTH FLOOR PLAN - NEW WORK**  
SCALE: 1/4" = 1'-0"



**FOURTH FLOOR KEY PLAN**  
NO SCALE

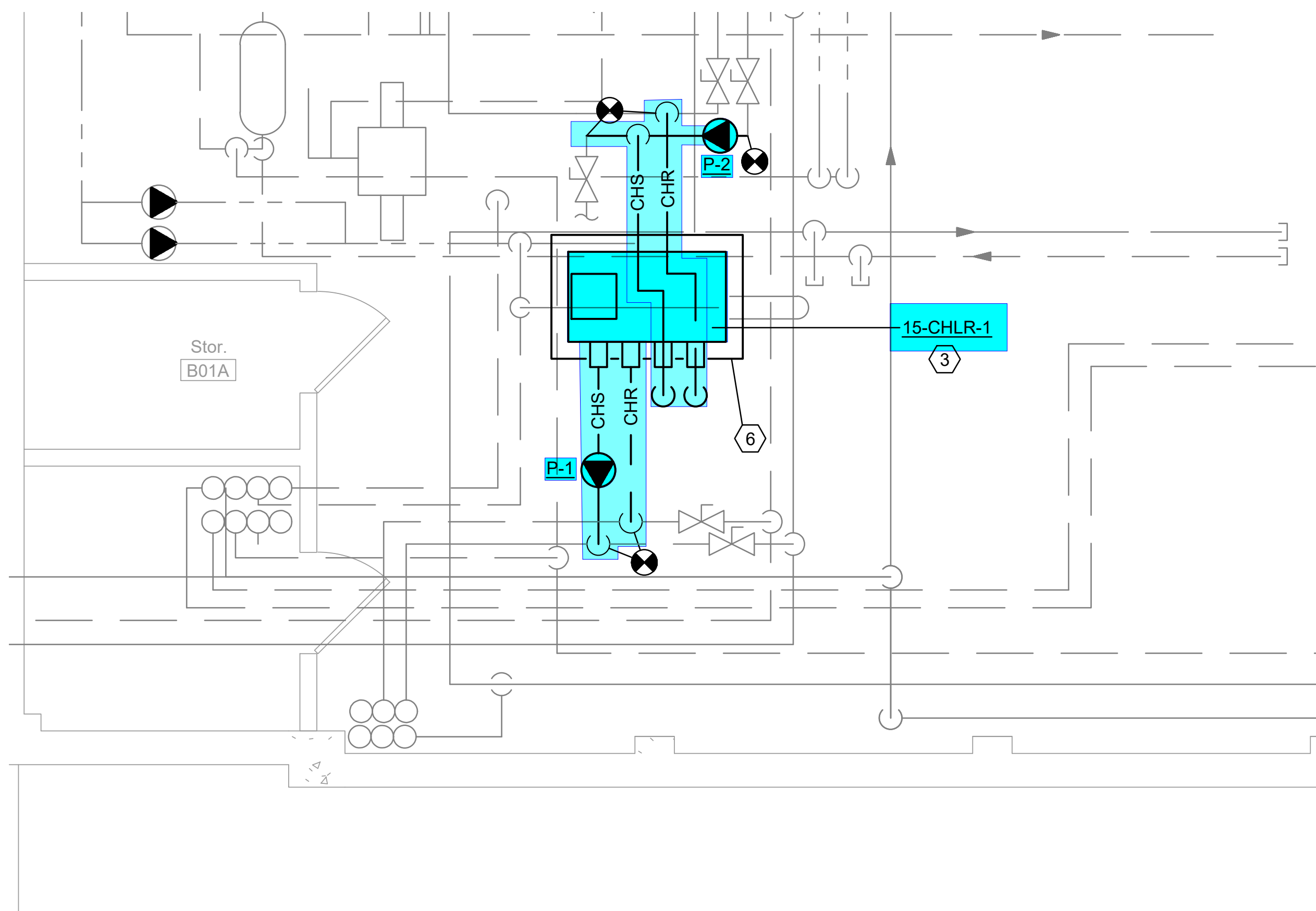
**PLAN NOTES**

1. REMOVE EXISTING DX SPLIT SYSTEM AIR-COOLED CONDENSING UNIT ON ROOF, AND ASSOCIATED PIPING, SUPPORTS, CONTROLS, ACCESSORIES, ETC.
2. REMOVE EXISTING DX SPLIT SYSTEM INDOOR UNIT AND ASSOCIATED DUCTWORK, PIPING, SUPPORTS, CONTROLS, ACCESSORIES, ETC.
3. REMOVE EXISTING FAN COIL UNIT AND ASSOCIATED DUCTWORK, PIPING, ACCESSORIES, SUPPORTS, CONTROLS, ETC.
4. REMOVE EXISTING PIPING TO THIS POINT FOR RECONNECTION IN NEW WORK.
5. DURATION OF WORK WITHIN THIS AREA SHALL BE A MAXIMUM OF 21 CALENDAR DAYS. DURING PERFORMANCE OF WORK, AREA WILL BE VACATED/UNOCCUPIED BY THE VA.
6. REMOVE EXISTING REFRIGERANT PIPING AND ASSOCIATED SPECIALTIES, SUPPORTS, ETC. APPROXIMATE ROUTE SHOWN.



- ### PLAN NOTES
1. REMOVE EXISTING WATER-COOLED CHILLER AND ASSOCIATED SUPPORTS, ACCESSORIES, ETC.
  2. REMOVE EXISTING VERTICAL FLOOR-SET WATER-COOLED AC UNIT AND ASSOCIATED PIPING, SUPPORTS, CONTROLS, ACCESSORIES, ETC.
  3. DURATION OF WORK WITHIN THIS AREA SHALL BE A MAXIMUM OF 7 CALENDAR DAYS.
  4. REMOVE EXISTING PIPING TO THIS POINT FOR RECONNECTION IN NEW WORK. REFER TO CHILLER PIPING DETAILS ON SHEET M502.
  5. REMOVE PIPING TO THIS POINT AND CAP.
  6. PROVIDE 4" HIGH CONCRETE PAD FOR NEW CHILLER - REFER TO DETAIL ON SHEET M501.
  7. ROUTE CONDENSATE DRAIN PIPING DOWN TIGHT TO WALL AND SPILL INTO EXISTING OPEN DRAIN.

**BASEMENT PLAN - BUILDING 15 - NEW WORK**  
SCALE: 1/4" = 1'-0"



**BASEMENT PLAN - BUILDING 15 - NEW WORK**  
SCALE: 1/4" = 1'-0"