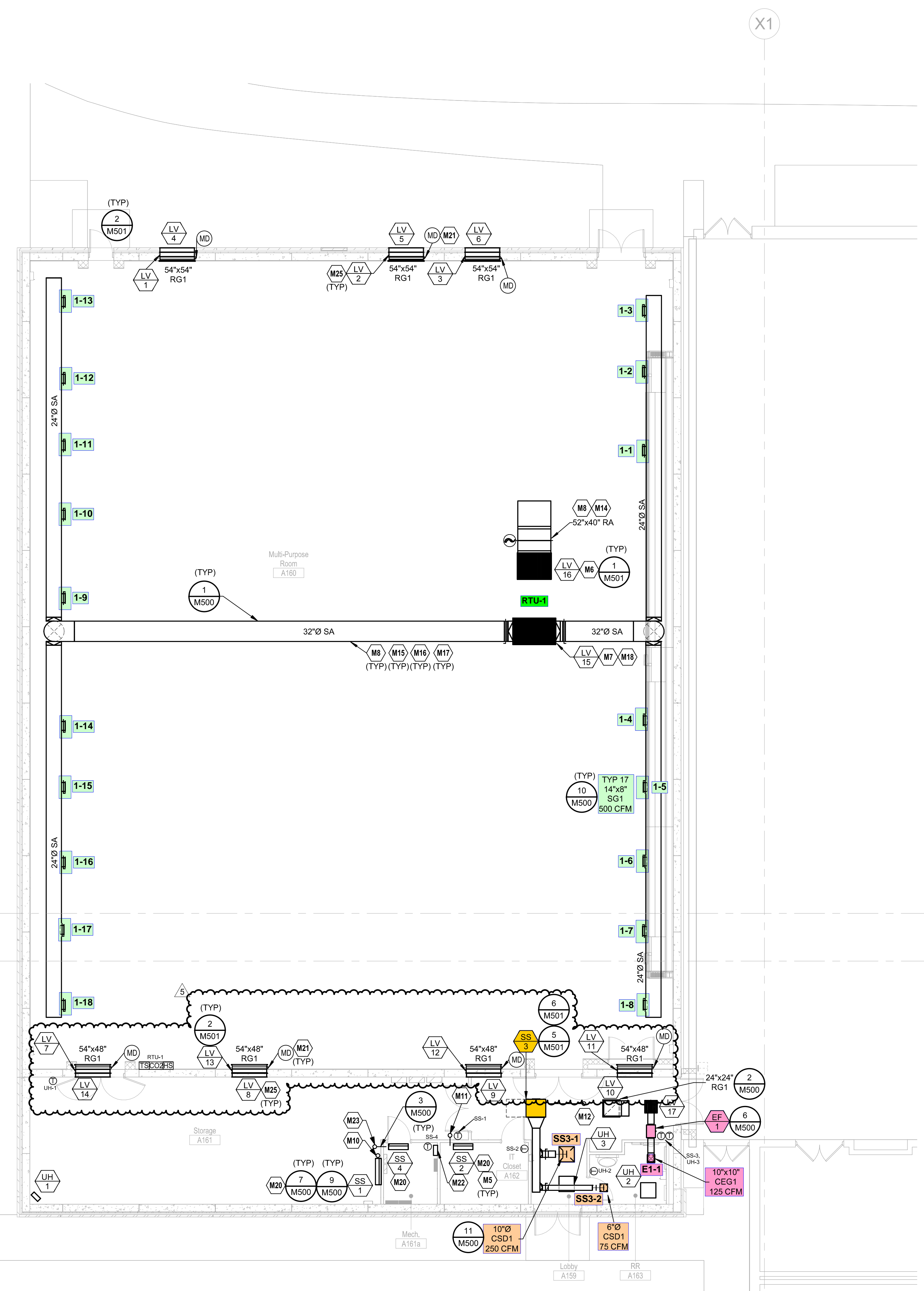


**ICC 500 PASSIVE VENTILATION...**

SAFE ROOM OCCUPANTS	1455.00 PEOPLE
VENTING AREA PER OCCUPANT	6.00 IN. SQ.
TOTAL VENTING AREA REQUIRED	60.63 FT. SQ.
LOW FREE AREA PROVIDED	28.55 FT. SQ.
HIGH FREE AREA PROVIDED	34.56 FT. SQ.
TOTAL FREE AREA PROVIDED	63.11 FT. SQ.

**MECHANICAL PLAN NOTES:**

- M5 COORDINATE INSTALLATION OF EQUIPMENT, DUCTWORK AND PIPING WITH ALL TRADES. DO NOT ROUTE DUCTWORK OR PIPING OVER ELECTRICAL PANELS OR SERVER RACKS.
- M6 54"x40" RA DUCT UP TO RTU-1 PLENUM ROOF CURB.
- M7 66"x40" SA DUCT UP TO RTU-1 PLENUM ROOF CURB.
- M8 ROUTE DUCT TIGHT TO STRUCTURE.
- M10 REFRIGERANT PIPING UP TO CU-1 ON THE ROOF. SIZE AND ROUTE PIPING PER MANUFACTURER'S RECOMMENDATION.
- M11 REFRIGERANT PIPING UP TO CU-2 ON THE ROOF. ROUTE REFRIGERANT PIPE OUT OF THE IT ROOM IMMEDIATELY AND PENETRATE ROOF ABOVE THE STORAGE ROOM. SIZE AND ROUTE PIPING PER MANUFACTURER'S RECOMMENDATION.
- M12 REFRIGERANT PIPING UP TO CU-3 ON THE ROOF. SIZE AND ROUTE PIPING PER MANUFACTURER'S RECOMMENDATION.
- M14 PROVIDE 1" ACOUSTICAL INTERNAL DUCT LINER IN ENTIRE LENGTH OF RETURN DUCTWORK.
- M15 PROVIDE 1" ACOUSTICAL INTERNAL DUCT LINER IN SUPPLY DUCT FROM UNIT DISCHARGE TO FIRST TAKEOFF.
- M16 EXPOSED DUCTWORK IN GYM SHALL BE FIELD PAINTED. REFER TO SPECIFICATIONS FOR DUCT FINISH FOR FIELD PAINTING. COLOR TO BE SELECTED BY ARCHITECT.
- M17 DUCTWORK IN GYM SHALL BE FULLY LINED. DIMENSIONS SHOWN ARE CLEAR INTERNAL DIMENSIONS. INCREASE SHEET METAL SIZE TO ACCOUNT FOR SPECIFIED LINER THICKNESS. REFER TO SPECIFICATIONS FOR MORE INFORMATION.
- M18 INSTALL ICC 500 LOUVER IN ROOF PENETRATION. REFER TO SHEET M501/1 FOR DETAIL. TRANSITION DUCT INSIDE PLENUM CURB TO CONNECT TO RTU.
- M20 MOUNT SS AT ROOF TO THE BOTTOM OF THE UNIT.
- M21 PROVIDE PASSIVE VENTILATION CONTROL DAMPER, RUSKIN CD-40 OR EQUIVALENT. PROVIDE WITH 24-DC POWER OPEN POWER CLOSED ACTUATOR. ACTUATOR SHALL BE COMPATIBLE WITH PASSIVE VENTILATION DAMPER CONTROL PANEL. TYPICAL FOR (7) PASSIVE VENTILATION LOUVERS.
- M22 FURNISH AND INSTALL A PASSIVE VENTILATION DAMPER CONTROL PANEL IN THIS APPROXIMATE LOCATION. PANEL SHALL BE SUPPLIED BY HVAC MANUFACTURING AND TECHNOLOGY. CONTACT LEN KOBYLUS AT 903-681-5067, LKOBYLUS@HVACMFG.COM. INSTALL LOW VOLTAGE CONTROL WIRING FROM CONTROL PANEL TO PASSIVE VENTILATION DAMPER ACTUATORS. TORQUE REQUIREMENTS TO OPEN DAMPERS SHALL BE VERIFIED PRIOR TO PROCUREMENT OF CONTROL PANEL.
- M23 REFRIGERANT PIPING UP TO CU-4 ON THE ROOF. ROUTE REFRIGERANT PIPE OUT OF THE ELECTRICAL ROOM IMMEDIATELY AND PENETRATE ROOF ABOVE THE STORAGE ROOM. SIZE AND ROUTE PIPING PER MANUFACTURER'S RECOMMENDATION.
- M25 REFER TO ARCHITECTURAL SHEETS FOR INFORMATION ON THE LOUVER ASSEMBLY'S EXACT INSTALLATION LOCATION.



1 HVAC LEVEL 1 PLAN - AREA A  
1/8" = 1'-0"

we design the future<sup>®</sup>  
1828 Walnut Street Suite 922  
Kansas City, MO 64108  
781.412.7700

115 Wilcox Street Suite 210  
Castle Rock, CO 80104  
720.949.1699  
HOLLISANDMILLER.COM

Hollis + Miller Architects  
Missouri State Certificate of Authority  
Architecture # 000001

**Henderson Engineers**  
MEP Engineers  
8345 Lenexa Drive, Suite 300  
Lenexa, KS 66214  
913.742.5397 phone  
913.742.5001 fax

**Olsson Associates**  
Civil Engineers  
7301 W. 133rd Street, Suite 200  
Overland Park, KS 66213  
913.381.1170 phone  
913.381.1174 fax

**Aubry Bend MS Multi-Purpose Addition**

Blue Valley School District  
12501 W. 175th St.  
Overland Park, Kansas 66221

BVSD Project Number: #ABM-2301

Confirmed  
Construction  
Documents

REVISIONS:

#	Description	Date
1	Addendum 02	03.09.2023
2	PKT 02	04.08.2023



09/07/2023

JOB NO: 22121  
DRAWN BY: AK  
CHECKED BY: KPC  
DATE: 04.07.2023

**HENDERSON**  
ENGINEERS  
8345 LENEXA DRIVE, SUITE 300  
LENEXA, KS 66214  
TEL 913.742.5000 FAX 913.742.5001  
WWW.HENDERSONENGINEERS.COM

**M101A**

225004693  
KS. CORPORATE NO. L-325  
EXPIRES 12/31/2024