

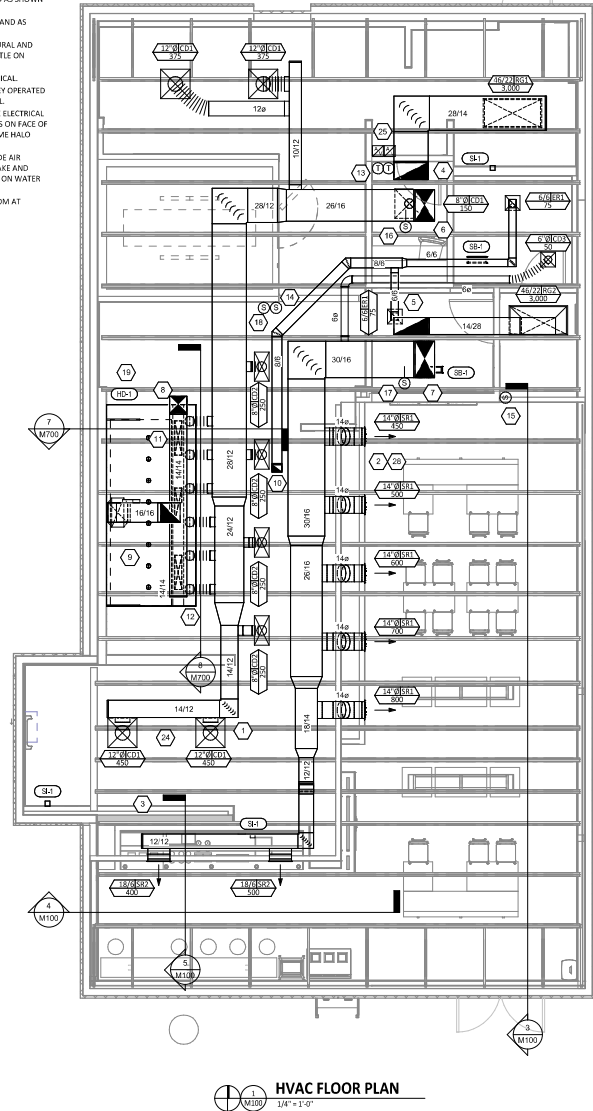
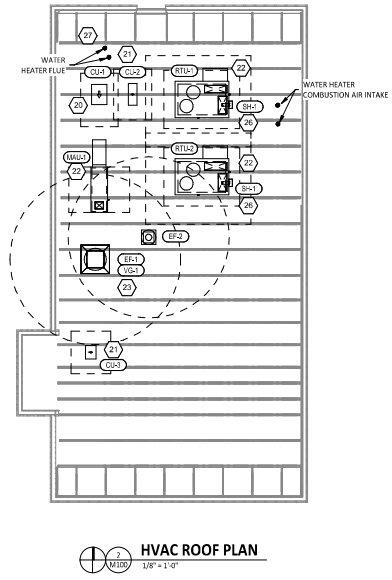
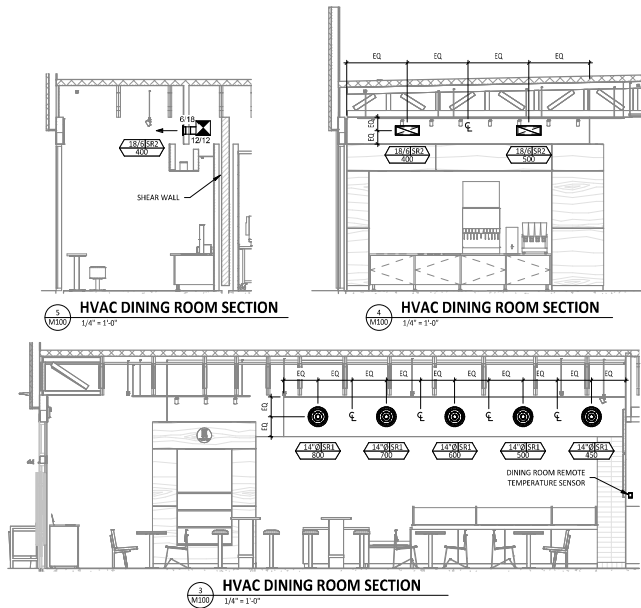


**HVAC PLAN NOTES**

- SEE ARCHITECTURAL REFLECTED CEILING PLAN FOR CEILING MOUNTED EQUIPMENT LOCATION. TYPICAL.
- PANTRY DUCTWORK VISIBLE THROUGH DINING ROOM SUPPLY REGISTERS BLACK. TYPICAL.
- PENETRATIONS THROUGH SHEAR WALL SHALL BE LIMITED TO 10" DIAMETER (OR A GROUP OF PENETRATIONS ALL CONTAINED WITHIN 10" DIAMETER). IF LARGER PENETRATIONS OR GROUPS OF PENETRATIONS ARE REQUIRED COORDINATE WITH STRUCTURAL ENGINEER FOR APPROPRIATE BRACING. SEE STRUCTURAL DRAWINGS FOR SHEAR WALL LOCATION.
- 28/14 DUCT UP FOR TRANSITION TO RTU-1 RETURN CONNECTION IN ROOF CURB. RTU-1 SHALL HAVE A G.C. PROVIDED SMOKE DETECTOR MOUNTED IN THE RETURN AIR STREAM. INTERLOCK SMOKE DETECTOR TO RTU-1 OPERATION.
- 28/14 DUCT UP FOR TRANSITION TO RTU-2 RETURN CONNECTION IN ROOF CURB. RTU-2 SHALL HAVE A G.C. PROVIDED SMOKE DETECTOR MOUNTED IN THE RETURN AIR STREAM. INTERLOCK SMOKE DETECTOR TO RTU-2 OPERATION.
- 26/16 DUCT UP FROM BUILDING SUPPLY THROUGH ROOF. TRANSITION TO RTU-1 SUPPLY CONNECTION IN ROOF CURB.
- 30/16 DUCT UP FROM BUILDING SUPPLY TO RTU-2 SUPPLY CONNECTION. TRANSITION IN ROOF CURB.
- 14/14 DUCT UP THROUGH ROOF. TRANSITION TO MAU-1 SUPPLY CONNECTION IN ROOF CURB.
- 16/16 DUCT UP FROM HOOD THROUGH ROOF TO EF-1 COMPLIANT WITH NFPA 96. PROVIDE RADIUS ELBOWS WITH AN INSIDE RADIUS OF 0.5W AT ELBOWS IN GREASE DUCT.
- 8/6 DUCT UP THROUGH ROOF TO EF-2.
- 28/6 DUCT DOWN TO MAKEUP AIR PSP DUCT CONNECTION. TRANSITION TO SUPPLY PLENUM OPENING SIZE. TYPICAL. CAP UNUSED DUCT CONNECTIONS.
- 8" DIA. DUCT DOWN TO AG PSP DUCT CONNECTION. TRANSITION TO SUPPLY PLENUM OPENING SIZE. TYPICAL. CAP UNUSED DUCT CONNECTIONS.
- INSTALL SINGLE GANG VERTICAL J-BOX GRIDPOINT THERMOSTATS FURNISHED BY TENS FOR RTU-1 AND RTU-2 AT THIS LOCATION AT 48" AFF. COORDINATE WITH ELECTRICAL SWITCHING IN THIS AREA. PROVIDE WIRING AS SHOWN IN DETAIL 8/E/730.
- INSTALL GRIDPOINT ZONE SENSOR MODULE FURNISHED BY TENS FOR RTU-1 AT THIS LOCATION 72" AFF DIRECTLY TO WALL (NO JUNCTION BOX). COORDINATE LOCATION WITH EQUIPMENT. PROVIDE WIRING AS SHOWN IN DETAIL 8/E/730.
- INSTALL GRIDPOINT ZONE SENSOR MODULE FURNISHED BY TENS FOR RTU-2 AT THIS LOCATION 66" AFF DIRECTLY TO WALL (NO JUNCTION BOX). COORDINATE LOCATION WITH EQUIPMENT. PROVIDE WIRING AS SHOWN IN DETAIL 8/E/710.
- INSTALL GRIDPOINT SUPPLY PROBE FURNISHED BY TENS FOR RTU-1 IN THE SUPPLY DUCTWORK UPSTREAM FROM THE FIRST BRANCH CONNECTION. PROVIDE WIRING AS SHOWN IN DETAIL 8/E/710.
- INSTALL GRIDPOINT SUPPLY PROBE FURNISHED BY TENS FOR RTU-2 IN THE SUPPLY DUCTWORK UPSTREAM FROM THE FIRST BRANCH CONNECTION. PROVIDE WIRING AS SHOWN IN DETAIL 8/E/710.
- INSTALL REMOTE TEMPERATURE SENSOR FOR HOOD HD-1 AT THIS LOCATION 72" AFF. COORDINATE LOCATION WITH EQUIPMENT. PROVIDE (2) #18 G. THERMISTOR CABLE FROM TEMPERATURE SENSOR TO HOOD CONTROL PANEL.
- INSTALL KITCHEN HOOD, HD-1. SUPPORT HOOD PER MANUFACTURER'S INSTALLATION INSTRUCTIONS AND AS DETAILED IN THE ARCHITECTURAL AND STRUCTURAL DRAWINGS. INSTALL HOOD ACCORDING TO THE REQUIREMENTS OF THE LISTING, IN COMPLIANCE WITH NFPA-96, THE BUILDING CODE, AND AUTHORITIES HAVING JURISDICTION. HOOD SHALL HAVE AN INTEGRAL DUCT COLLAR TEMPERATURE SENSOR TO AUTOMATICALLY ENERGIZE THE EXHAUST AND MAKEUP AIR FANS IF COOKING TEMPERATURES ARE DETECTED. EXHAUST DUCT SYSTEM TO BE WELDED OR FACTORY-MANUFACTURED WATER AND AIR TIGHT. INSTALL CLEANOUTS PER CODE AND AS SHOWN. INSTALL HOOD PER DETAILS 2, 4, AND 9/M/700. CHIPOTLE WILL PROVIDE AN INDEPENDENT TESTING AGENCY FOR TESTING THE INTEGRITY OF THE GREASE DUCT SYSTEM.

**HVAC PLAN NOTES**

- INSTALL REMOTE CONDENSING UNIT FOR WALK-IN COOLER ON ROOF AS DETAILED IN THE ARCHITECTURAL AND STRUCTURAL DRAWINGS. INSTALL REFRIGERANT LINE SET, THERMOSTATIC EXPANSION VALVE, SOLENOID VALVE, TEMPERATURE CONTROL, SIGHT GLASS, FILTER DRIER, PRESSURE CONTROL, LOW AMBIENT CONTROLS, AND WEATHERPROOF HOUSING. TRAP AND SLOPE REFRIGERANT LINES PER MANUFACTURER'S RECOMMENDATIONS. INSTALLATION SHALL COMPLY WITH ASHRAE/ANSI STANDARD 15. INSTALL THE REFRIGERANT LINE SET UNDER THE ROOF DECK TO WITHIN 3" OF THE CONDENSING UNIT. CUT 2-1/2" HOLE IN WALK-IN COOLER ROOF FOR REFRIGERANT LINE SET AND SEAL PER THE COOLER MANUFACTURER'S INSTALLATION INSTRUCTIONS AFTER LINE SET IS INSTALLED.
- INSTALL REMOTE CONDENSER FOR ICE MACHINE ON ROOF AS DETAILED IN THE ARCHITECTURAL AND STRUCTURAL DRAWINGS. INSTALL REFRIGERANT LINE SET, THERMOSTATIC EXPANSION VALVE, SOLENOID VALVE, TEMPERATURE CONTROL, SIGHT GLASS, FILTER DRIER, PRESSURE CONTROL, LOW AMBIENT CONTROLS, AND WEATHERPROOF HOUSING. TRAP AND SLOPE REFRIGERANT LINES PER MANUFACTURER'S RECOMMENDATIONS. SEAL PIPING PENETRATIONS THROUGH ROOF. INSTALLATION SHALL COMPLY WITH ASHRAE/ANSI STANDARD 15. INSTALL THE REFRIGERANT LINE SET UNDER THE ROOF DECK TO WITHIN 3" OF THE REMOTE CONDENSER. IF REFRIGERANT PIPING TO ICE MAKER IS EXPOSED TO PUBLIC VIEW CONCEAL WITHIN A STAINLESS STEEL SHROUD AS SHOWN IN THE ARCHITECTURAL DRAWINGS.
- INSTALL ROOFTOP EQUIPMENT PER MANUFACTURER'S INSTALLATION INSTRUCTIONS AND AS DETAILED IN THE ARCHITECTURAL AND STRUCTURAL DRAWINGS.
- INSTALL EXHAUST FAN EF-1 PER DETAIL 5/M/700 AND AS DETAILED IN THE ARCHITECTURAL AND STRUCTURAL DRAWINGS. INSTALL GREASE WRESGUARD SYSTEM FURNISHED BY CHIPOTLE ON EXHAUST FAN, EF-1.
- PROVIDE SUPPLY DIFFUSER CONNECTION TO SUPPLY SYSTEM PER DETAIL 1/M/700. TYPICAL.
- PROVIDE AUDIO VISUAL REMOTE SMOKE DETECTOR ANNUNCIATOR WITH REMOTE KEY OPERATED RESET. WIRE A UNIT BACK TO EACH SMOKE DETECTOR. MOUNT UNIT 60" AFF. TYPICAL.
- INSTALL REME HALO AIR PURIFIER FURNISHED BY TUV IN RTU PER DETAIL 6/M/700. SEE ELECTRICAL DRAWINGS FOR POWER CONNECTION INFORMATION. INSTALL UV WARNING STICKERS ON FACE OF ENCLOSURE PER DETAIL AND ON ANY RTU ACCESS DOORS THROUGH WHICH THE REME HALO WOULD BE VISIBLE IF OPENED.
- MAINTAIN 10" CLEARANCE BETWEEN WATER HEATER FLEU TERMINATION AND OUTSIDE AIR INTAKES. MAINTAIN 10" CLEARANCE BETWEEN WATER HEATER COMBUSTION AIR INTAKE AND EXHAUST FAN EF-1 DISCHARGE. SEE PLUMBING DRAWINGS FOR MORE INFORMATION ON WATER HEATER FLEU AND COMBUSTION AIR TERMINATIONS.
- ADJUST SUPPLY REGISTERS SO THAT SUPPLY AIR HITS WALL ON OPPOSITE SIDE OF ROOM AT APPROXIMATELY 7' AFF WITH NO DRAFTS FELT IN THE DINING ROOM.



**NATIONAL**  
4635 Trieman Blvd, Suite 250  
Hilliard, Ohio 43026  
Phone: (614) 751-9610  
Fax: (614) 552-5240  
Contact: Joe Jones  
(614) 328-2024  
jones@nationalengineering.com

**FOR CONSTRUCTION**

COPYRIGHT 2025  
THIS DOCUMENT IS AN INSTRUMENT OF SERVICE  
AND AS SUCH REMAINS THE PROPERTY OF  
CHIPOTLE MEXICAN GRILL, INC. PERMISSION FOR  
USE OF THIS DOCUMENT IS LIMITED AND CAN BE  
EXTINGUISHED BY WRITTEN AGREEMENT WITH  
CHIPOTLE MEXICAN GRILL, INC.



STORE NO.: 5584  
GEORGETOWN & I-75  
98 OSBORNE WAY  
GEORGETOWN, KY 40324

Issue Reason:	
03/19/2025	PERMIT SET
07/16/2025	CONSTRUCTION SET

Drawn:	Checked:
JEI	CKJ

Project No:  
2402035

Contract:  
HVAC PLAN

**M100**







**PLUMBING SUPPLY PLAN NOTES**

- CONNECT TO THE EXISTING 1-1/2" DOMESTIC WATER LINE IN THE LOCATION SHOWN.
- PROVIDE 1/2" FILTERED WATER TO THE BAG-IN-BOX SODA CARBONATOR AT 100" AFF. SODA CARBONATOR SHALL HAVE AN INTEGRAL ASSE 1002-3ATED CARBONATED BEVERAGE BACKFLOW PREVENTION DEVICE.
- PROVIDE WATER HEATERS DWH-1 AND DWH-2 PER DETAIL 1/P700.
- PROVIDE WATER HEATERS MOUNTED TO WALL PER DETAIL 1/P700. PROVIDE 1/2" SUPPLY PIPES FROM FILTERS TO ICE MAKER AND SODA CARBONATOR AS SHOWN.
- PROVIDE 1/2" FILTERED WATER ROUGH-IN TO THE ICE MAKER AT 56" AFF. PROVIDE 6' LONG STAINLESS STEEL FLEXIBLE BRIDGED WASHING MACHINE WATER CONNECTOR WITH MINIMUM 0.48" ID (BRASSCRAFT 5L12 220A F OR EQUAL FOR FINAL CONNECTION TO ICE MAKER).
- PROVIDE DOMESTIC WATER ROUGH-INS FOR THE MOP BASIN FAUCET AT 36" AFF. PROVIDE DOMESTIC WATER ROUGH-INS FOR THE CHEMICAL DISPENSER FAUCET (HB-1) AT 64" AFF DIRECTLY ABOVE THE MOP BASIN FAUCET. SEE ARCHITECTURAL ELEVATION FOR ADDITIONAL INFORMATION.
- CONNECT TO THE EXISTING GAS PIPE IN THE SPACE.
- PROVIDE GAS CONNECTIONS TO THE ICE COOKER AND RANGE (SEE DETAIL 1/P700). SUPPORT THE GAS PIPE ON THE ROOF PER DETAIL 5/P700. WOOD BLOCKING IS NOT AN ACCEPTABLE METHOD OF SUPPORTING THE GAS PIPE.
- PROVIDE ACCESSIBLE LINE-SIZED GAS VALVE, DIRT LEG, AND UNION AT GAS CONNECTION TO THE EQUIPMENT.
- REFER TO ARCHITECTURAL DRAWINGS FOR PAINTING OF INTERIOR AND EXTERIOR EXPOSED GAS PIPE.
- PROVIDE DOMESTIC WATER ROUGH-INS FOR THE CHEMICAL DISPENSER FAUCET (HB-2) AT 52" AFF. SEE ARCHITECTURAL ELEVATION FOR ADDITIONAL INFORMATION.
- PROVIDE DOMESTIC WATER ROUGH-INS FOR THE VICTORY WASH DISPENSER FAUCET (HB-2) AT 52" AFF. SEE ARCHITECTURAL ELEVATION FOR ADDITIONAL INFORMATION.
- PROVIDE RESTROOM HAND SINK WALL CARRIER IN WALL PER PLUMBING SCHEDULE. INSTALL THERMOSTATIC MIXING VALVE FURNISHED WITH HAND SINK FAUCET SECURED TO WALL BELOW HAND SINK. ALL HAND SINK PIPING AND ACCESSORIES SHALL BE FULLY CONTAINED DIRECTLY BELOW HAND SINK.
- PROVIDE KITCHEN EQUIPMENT GAS SHUTOFF 6" BELOW THE CEILING PER DETAIL 4/P700.

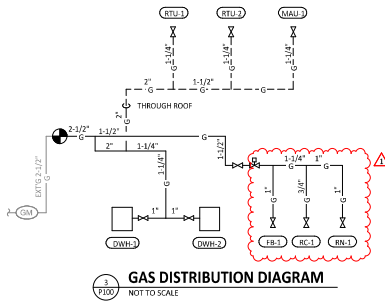
**PLUMBING SUPPLY PLAN NOTES**

- CONNECT CHEMICAL DISPENSER TO HB-1. CHEMICAL DISPENSER HAS AN INTEGRAL AIR GAP AS IS SHOWN IN DETAIL 10/P700.
- PROVIDE ASSE 1016/1070 POINT-OF-USE THERMOSTATIC MIXING VALVE, WATTS LFUSG-6, ON WATER SUPPLY TO KITCHEN HAND SINKS. PROVIDE ANGLE STOP BELOW SINK, FASTEN MIXING VALVE TO WALL, AND MAKE FINAL CONNECTION FROM ANGLE STOPS TO MIXING VALVE AND FROM MIXING VALVE TO FAUCET USING BRANDED STAINLESS STEEL HOSE. ADJUST MIXING VALVE FOR A DISCHARGE TEMPERATURE OF APPROXIMATELY 110° F.
- PROVIDE ACCESSIBLE VALVE IN WATER SUPPLY TO FIXTURE AS SHOWN.
- PROVIDE GAS CONNECTION TO THE ICE COOKER PER DETAIL 1/P700.
- NO USER.
- PROVIDE 1/2" FILTERED WATER ROUGH-IN TO THE ICE MAKER AT 24" AFF. PROVIDE 6' LONG STAINLESS STEEL FLEXIBLE BRIDGED WASHING MACHINE WATER CONNECTOR WITH MINIMUM 0.48" ID (BRASSCRAFT 5L12 220A F OR EQUAL FOR FINAL CONNECTION TO ICE MAKER).
- INSTALL RGF IM5B ICE MAKER SANITIZER FURNISHED BY TUV PER CHIPOTLE'S INSTALLATION INSTRUCTIONS.
- PROVIDE 3/4" DOMESTIC HOT AND COLD WATER ROUGH-INS FOR THE PREP SINK (SK-2) FAUCET AT 24" AFF TO ALLOW FOR THE VICTORY WASH CHEMICAL DOCK TO BE INSTALLED DIRECTLY BELOW THE PREP SINK BASIN. MAKE FINAL CONNECTION TO PREP SINK FAUCET USING 3/4" BRANDED STAINLESS STEEL WATER HEATER CONNECTOR HOSE.
- PROVIDE 1/2" HOT WATER TO THE DISH MACHINE AT 66" AFF ABOVE LEFT SIDE OF DISH MACHINE, MAKING FINAL CONNECTION USING HOSE FURNISHED WITH DISH MACHINE. PROVIDE WATER HAMMER ARRESTOR ON HOT WATER LINE.
- PROVIDE ROOF HYDRANT RH-1 WITH BOTTOM OF NOZZLE INSTALLED 24" ABOVE THE BOTTOM OF ROOF DECK. PROVIDE ACCESSIBLE ISOLATION VALVE IN WATER SUPPLY TO ROOF HYDRANT. SUPPORT ROOF HYDRANT PER THE MANUFACTURER'S INSTALLATION INSTRUCTIONS.
- PROVIDE FILTERED DOMESTIC WATER ROUGH-IN FOR THE SPEED FILL PUP FILLER FAUCET (PF-1) AT 42" AFF. SEE ARCHITECTURAL ELEVATION FOR DETAIL.
- PROVIDE WATER SOFTENER PER DETAIL 14/P700.
- INSTALL RGF IM5B ICE MAKER SANITIZER FURNISHED BY TUV PER CHIPOTLE'S INSTALLATION INSTRUCTIONS. LOCATE AND BELOW UTENSIL COUNTER IN A LOCATION THAT DOES NOT INTERFERE WITH THE ROLLING RACK BELOW THE UTENSIL COUNTER.
- PENETRATIONS THROUGH SHEAR WALL SHALL BE LIMITED TO 10" DIAMETER (OR A GROUP OF PENETRATIONS ALL CONTAINED WITHIN 10" DIAMETER). IF LARGER PENETRATIONS OR GROUPS OF PENETRATIONS ARE REQUIRED COORDINATE WITH STRUCTURAL ENGINEER FOR APPROPRIATE BRACING. SEE STRUCTURAL DRAWINGS FOR SHEAR WALL LOCATION.
- PROVIDE ACCESSIBLE TRAP PRIMER ABOVE LAY-IN CEILING UTENSIL COUNTER. INSTALL PER MANUFACTURER'S INSTALLATION INSTRUCTIONS WITH A SERVICE VALVE AT THE TRAP PRIMER INLET. PROVIDE 1/2" DISTRIBUTION PIPES TO FLOOR DRAIN TRAP PRIMER CONNECTION(S) AS SHOWN. HORIZONTAL DISTRIBUTION PIPING SHALL HAVE CONTINUOUS SLOPE TO THE FLOOR DRAIN(S).
- REPLACE STOCK WATER CLOSET HANDLE WITH UNIVERSAL CABLE OPERATED HANDLE (FLUSHMATE AP3050503 OR AP305004 - FIELD VERIFY COMPATIBILITY WITH FLUSHMATE SYSTEM IN WATER CLOSET).
- PROVIDE AN ACCESSIBLE MAIN DOMESTIC WATER SHUTOFF VALVE ABOVE LAY-IN CEILING AS SHOWN. WATER SHUTOFF VALVE SHALL BE LOCATED BELOW THE VALVE.

**PLUMBING GAS CONNECTIONS**

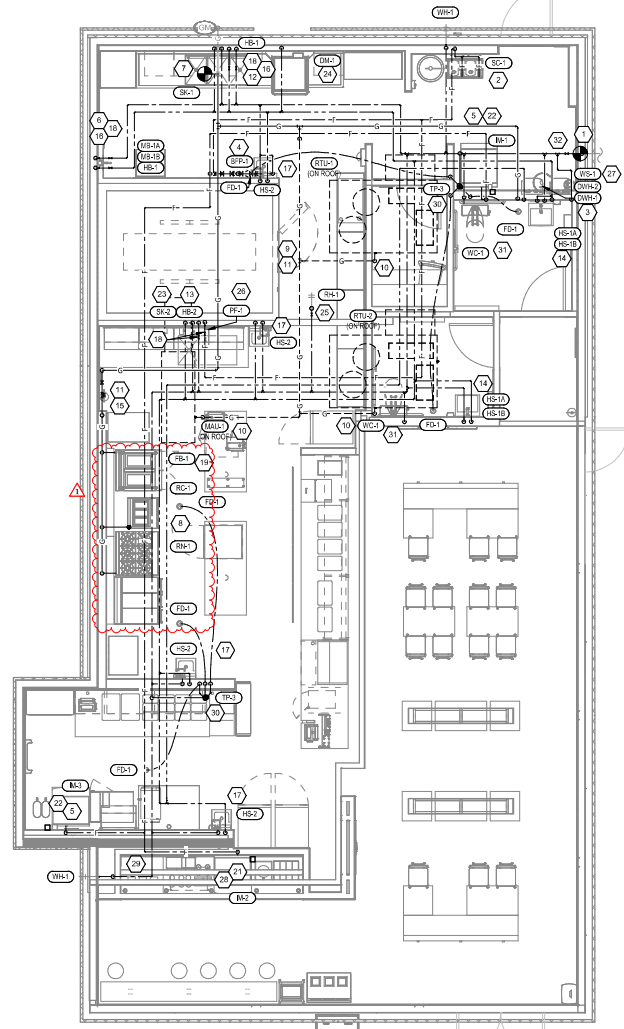
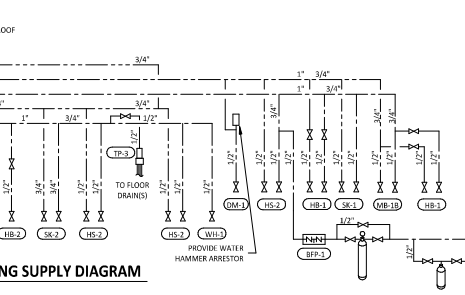
TAG	DESCRIPTION	CONNECTION SIZE	EQUIVALENT LENGTH	INPUT
DWH-1	WATER HEATER (GAS TANKLESS)	3/4"	65'	159,000 Btu/h
DWH-2	WATER HEATER (GAS TANKLESS)	3/4"	65'	159,000 Btu/h
FB-1	FLUE VENT GAS PIPER	1-1/2"	85'	170,000 Btu/h
MAU-1	DIRECT FIRED MAKEUP AIR UNIT	1-1/2"	70'	215,000 Btu/h
RC-1	RICE COOKER	3/4"	90'	33,000 Btu/h
BN-1	BURNER RANGE	3/4"	95'	192,000 Btu/h
RTU-1	KITCHEN ROOFTOP UNIT	3/4"	90'	250,000 Btu/h
RTU-2	DINING ROOM ROOFTOP UNIT	3/4"	65'	250,000 Btu/h
<b>GRAND TOTAL</b>				<b>1,518,000 Btu/h</b>

- NOTES:  
 1. PRESSURE REQUIRED AFTER METER: 7" W.C.  
 2. DISTANCES ARE APPROXIMATE



**PLUMBING FIXTURE SUPPLY CONNECTIONS**

TAG	DESCRIPTION	CONNECTION SIZE		ROUGH-IN TYPE	WSEU		TOTAL COUNT	TOTAL WSEU
		CW	HW		CW	HW		
BFP-1	RFP BACKFLOW PREVENTER	1/2"	1/2"	DIRECT	0	0	0	1
DM-1	DISH SANITIZING MACHINE (PUMPED OUTLET)	0"	1/2"	HOSE 1/2"	0	3	3	1
ET-1	EXPANSION TANK	3/4"	3/4"	DIRECT	0	2	2	0
HB-1	CHEMICAL DISPENSER HOSE BIB	1/2"	1/2"	MIP	2	2	3	2
HB-2	VEGETABLE WASH HOSE BIB	1/2"	1/2"	MIP	1	1	1	1
HS-1B	RESTROOM HAND SINK FAUCET	1/2"	1/2"	ANGLE 3/8"	1	1	2	2
HS-2	KITCHEN HAND SINK	1/2"	1/2"	ANGLE 3/8"	1	1	2	4
IM-1	ICE MAKER - BOH	1/2"	1/2"	HOSE 1/2"	1	1	1	1
IM-2	ICE MAKER - SODA	1/2"	1/2"	HOSE 1/2"	1	1	1	1
IM-3	ICE MAKER - SODA	1/2"	1/2"	HOSE 1/2"	1	1	1	1
MB-1B	MOP SINK FAUCET	1/2"	1/2"	MIP	2	2	3	1
PF-1	SPEED FILL FAUCET	3/8"	3/8"	DIRECT	1	1	1	1
RH-1	FREEZE PROOF ROOF HYDRANT	3/4"	3/4"	DIRECT	1	1	1	1
SC-1	BAG-IN-BOX SODA RACK WITH CARBONATORS	1/2"	1/2"	ANGLE 3/8"	1	1	1	1
SK-1	THREE COMPARTMENT SINK	1/2"	1/2"	ANGLE 1/2"	3	3	4	1
SK-2	PREP SINK	3/4"	3/4"	ANGLE 3/4"	3	3	4	1
TP-3	TRAP PRIMER (THREE-FOUR FLOOR DRAINS)	1/2"	1/2"	DIRECT	0	0	2	0
WC-1	WATER CLOSET	1/2"	1/2"	ANGLE 3/8"	2	2	2	2
WH-1	FREEZE PROOF WALL HYDRANT	3/4"	3/4"	DIRECT	1	1	1	2
YS-1	WATER SOFTENER	1"	1"	DIRECT	0	0	1	0
<b>GRAND TOTAL</b>								<b>46</b>



**NATIONAL**  
 4635 Trieman Blvd., Suite 250  
 Hilliard, Ohio 43026  
 Phone: (614) 751-9610  
 Fax: (614) 552-5240  
 Contact: Joe Jones  
 (614) 328-2024  
 jones@nationalengineering.com

FOR CONSTRUCTION

**CHIPOTLE MEXICAN GRILL**  
 CHIPOTLE MEXICAN GRILL, INC.  
 PO BOX 183566  
 COLUMBUS, OH 43218-2566  
 TELEPHONE: 614 393 2400  
 INTERNET: WWW.CHIPOTLE.COM

STORE NO.: 5584  
 GEORGETOWN & I-75  
 98 OSBORNE WAY  
 GEORGETOWN, KY 40324

Issue/Revision	Checked	Permit Set
03/19/2025		PERMIT SET
07/16/2025		CONSTRUCTION SET

Revision	HEEP UPDATE
07/16/2025	HEEP UPDATE

Drawn:	Checked:
JEI	CK
Project No:	
2402035	
Contract:	

PLUMBING PLAN  
 WATER & GAS

P100

FOR  
 CONSTRUCTION



STORE NO.: 5584  
 GEORGETOWN & I-75  
 98 OSBORNE WAY  
 GEORGETOWN, KY 40324

Issue Reason:	
03/19/2025	PERMIT SET
07/16/2025	CONSTRUCTION SET

Drawn:	Checked:
JEI	CJK

Project No:	
2402035	

CONCRETE:  
 PLUMBING PLAN  
 WASTE & VENT

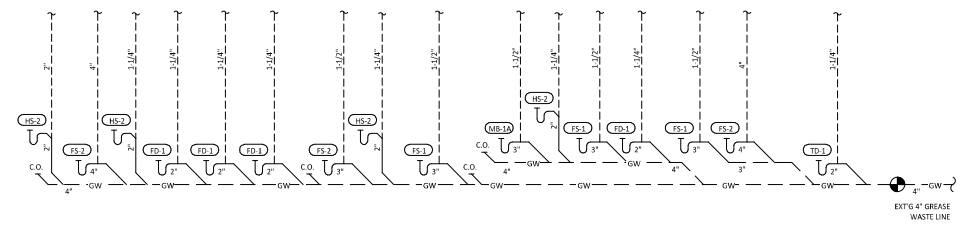
P110

**PLUMBING WASTE AND VENT PLAN NOTES**

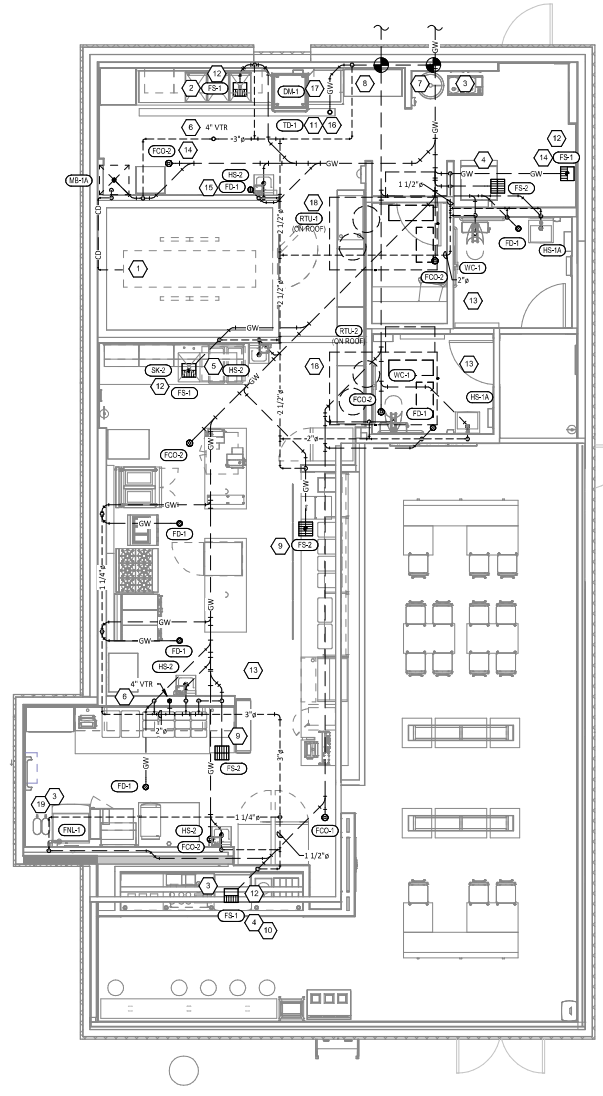
- 1 PROVIDE 3/4" CONDENSATE DRAIN FROM THE WALK-IN COOLER EVAPORATOR TO THE MOP SINK AS SHOWN. SLOPE CONDENSATE DRAIN A MINIMUM OF 1" PER FOOT. HOLD EXPOSED CONDENSATE DRAIN IN WALK-IN COOLER AS HIGH AS POSSIBLE. CONCEAL DRAIN PIPING WITHIN FRAMED WALLS AS SHOWN. DISCHARGE THROUGH AN AIR GAP. MAKE FINAL CONNECTION TO EVAPORATOR INSIDE WALK-IN COOLER USING A UNION. CONDENSATE DRAIN SHOULD PENETRATE WALL AT POINT OF DISCHARGE AT 8" AFF.
- 2 PROVIDE DRAIN CONNECTIONS TO THE THREE COMPARTMENT SINK PER DETAIL 12/P700.
- 3 COORDINATE ROUTING OF SODA BUNDLES WITH COCA-COLA TECHNICIAN FROM BAG-IN-BOY AREA TO EACH SODA FOUNTAIN, OTHER THAN WITHIN THE WALLS DOWN TO THE DRIVER BOX THE SODA BUNDLE SHALL BE ROUTED OVERHEAD WITHOUT CONDUIT. COORDINATE SUPPORT AND ROUTING OF THE SODA LINE BUNDLES WITH COCA-COLA TECHNICIAN DURING ROUGH-IN AND PROVIDE NECESSARY SUPPORTS. SEE ARCHITECTURAL DRAWINGS FOR SODA BUNDLE TERMINATION LOCATION AND PROVIDE TERMINATION PER DETAIL 12/P700.
- 4 PROVIDE PVC DRAIN PIPES FROM THE ICE MACHINE TO THE FLOOR SINK PER THE MANUFACTURER'S INSTALLATION INSTRUCTIONS. PROVIDE A CODE-APPROVED AIR GAP AT THE DISCHARGE TO THE FLOOR SINK. SECURE ICE MAKER DRAIN PIPES TO THE BOTTOM OF THE ICE MAKER.
- 5 PROVIDE DRAIN LINES FROM THE FOOD PREP SINK TO THE FLOOR SINK. PROVIDE AN AIR GAP AT THE DISCHARGE TO THE FLOOR SINK.
- 6 PROVIDE A 4" VENT THROUGH THE ROOF PER DETAIL 3/P700.
- 7 CONNECT TO THE EXISTING 4" GREASE WASTE LINE LEADING TO THE EXISTING DEDICATED 1500 GALLON GREASE INTERCEPTOR.
- 8 CONNECT TO THE EXISTING 4" SANITARY SEWER LINE.
- 9 PROVIDE 3/4" VALVED DRAIN FROM HOT FOOD TABLE TO THE FLOOR SINK. DRAIN THROUGH AN AIR GAP.
- 10 PROVIDE INSULATED COPPER DRAIN LINES FROM THE TEA TRAY DRAIN AND THE SODA MACHINE DRAIN TO THE FLOOR SINK. DRAIN THROUGH AN AIR GAP. HOLD TEA TRAY DRAIN AS HIGH AS POSSIBLE AND SECURE TO STRUCTURE BELOW THE UTENSIL COUNTER.
- 11 TRIM TRENCH DRAIN ENDS PER THE MANUFACTURER'S INSTALLATION INSTRUCTIONS PRIOR TO INSTALLATION SO THAT GRATE FITS WITHOUT GAPS. INSTALL TRENCH DRAIN WITH SLIGHT POSITIVE SLOPE TOWARD THE DRAIN CONNECTION TO AVOID STANDING WATER IN TRENCH DRAIN.
- 12 INSTALL FS-1 BASED WITH TOP OF SINK AT 1" AFF.
- 13 DO NOT PROVIDE WALL CLEANDOUTS ON TILE OR PUBLICLY-VISIBLE WALLS. IF A WALL CLEANDOUT IS REQUIRED ON THESE SURFACES COORDINATE THE EXACT LOCATION WITH CHIPOTLE'S CONSTRUCTION MANAGER.
- 14 PROVIDE INDIRECT WASTE AND CONDENSATE DRAINS FROM FIXTURES OTHER THAN KITCHEN SINKS CONCEALED IN THE WALL AS SHOWN IN DETAIL 9/P700.
- 15 PROVIDE DRAIN FROM WATER FILTER BFP TO FLOOR DRAIN CONCEALED IN THE WALL AS SHOWN IN DETAIL 9/P700.
- 16 PROVIDE TRENCH DRAIN AS SHOWN IN DETAIL 15/P700.
- 17 INSTALL DRAIN HOSE FURNISHED WITH DISH MACHINE FROM DISH MACHINE OUTLET TO FLOOR SINK. HOLD DRAIN HOSE TIGHT TO WALL AND SECURE TO 3-COMP SINK DRAIN TO MAINTAIN AN AIR GAP AT THE FLOOR SINK.
- 18 PROVIDE CONDENSATE TRAP ON RTU PER DETAIL 13/P700.
- 19 SEE DETAIL 18/P700 FOR DRAINS FROM TEA TRAY, ICE MAKER, AND SODA MACHINE TO FUNNEL DRAIN.

**PLUMBING FIXTURE WASTE CONNECTIONS**

TAG	DESCRIPTION	CONNECTION SIZE - WASTE	DFU	COUNT	TOTAL DFU
DM-1	DISH SANITIZING MACHINE (DUMPED OUTLET)	5/8"	7	1	7
FCD-1	FLOOR CLEANDOUT (3")	3"	0	1	0
FCD-2	FLOOR CLEANDOUT (4")	4"	0	5	0
FD-1	FLOOR DRAIN	2"	2	6	12
FNL-1	FUNNEL DRAIN	2"	2	1	2
FS-1	FLOOR SINK	3"	5	4	20
FS-2	FLOOR SINK	3"	5	3	15
HS-1A	RESTROOM HAND SINK	2"	1	2	2
HS-2	KITCHEN HAND SINK	2"	1	4	4
MB-1A	MOP BASIN	2"	2	1	2
SK-1	THREE COMPARTMENT SINK	2"	0	1	0
SK-2	PREP SINK	2"	0	1	0
TD-1	TRENCH DRAIN	2"	2	1	2
WC-1	WATER CLOSET	2"	4	2	8
GRAND TOTAL					74



**7** SANITARY WASTE & VENT DIAGRAM  
 P110 NOT TO SCALE



**1** SANITARY WASTE & VENT PLAN  
 P110 1/4" = 1'-0"

**PLUMBING FIXTURE SCHEDULE**

TAG	DESCRIPTION	FURNISHED BY	INSTALLED BY	BASIS FOR DESIGN		REMARKS	COUNT	CONNECTION SIZE			WATER SUPPLY FIXTURE UNITS			DRAINAGE FIXTURE UNITS
				MANUFACTURER	MODEL			CW	HW	WASTE	CW	HW	TOTAL	
BFP-1	RPT BACKFLOW PREVENTER	GC	GC	CONBRACO	4ALF-203-1ZF	LEAD FREE REDUCED PRESSURE PRINCIPLE BACKFLOW PREVENTER WITH AUTOMATIC DIFFERENTIAL RELIEF VALVE	1	1/2"			0	0	0	
DM-1	DISH SANITIZING MACHINE (PUMPED OUTLET)	KES	GC	SEE ARCH	--	CHEMICAL SANITIZING DISH MACHINE WITH INTEGRAL ELECTRIC BOOSTER HEATER AND PUMPED OUTLET	1	0"	1/2"	5/8"	0	3	3	7
ET-1	EXPANSION TANK	GC	GC	AMTROL	ST-5	2 GALLON CAPACITY	1	3/4"			0		0	
FB-1	DUAL VAT GAS FRYER	KES	GC	SEE ARCH	--		1							
FC0-1	FLOOR CLEANDOUT (3")	GC	GC	SIoux CHIEF	852-3PWR	ON-GRADE ADJUSTABLE CLEANDOUT WITH INTERNAL THREADED CLEANDOUT PLUG AND ROUND NICKEL BRONZE RING AND COVER (OR APPROVED EQUAL WITH INTERNAL THREADED CLEANDOUT PLUG)	1			3"				0
FC0-2	FLOOR CLEANDOUT (4")	GC	GC	SIoux CHIEF	852-4PWR	ON-GRADE ADJUSTABLE CLEANDOUT WITH INTERNAL THREADED CLEANDOUT PLUG AND ROUND NICKEL-BRONZE RING AND COVER (OR APPROVED EQUAL WITH INTERNAL THREADED CLEANDOUT PLUG)	5			4"				0
FD-1	FLOOR DRAIN	GC	GC	SIoux CHIEF	842-2-PWR	ADJUSTABLE FLOOR DRAIN WITH PVC BODY, ROUND POLISHED METAL RING AND STRAINER, AND TRAP PRIMER PORT	6	1/2"		2"				2
FNL-1	FUNNEL DRAIN	GC	GC	JAY R. SMITH	3823T	FUNNEL DRAIN WITH CAST BRONZE BODY AND THREADED OUTLET	1			2"				2
FS-1	FLOOR SINK	GC	GC	SIoux CHIEF	861-3PU2	HEAVY DUTY PVC FLOOR SINK WITH ALUMINUM DOME BOTTOM STRAINER AND OPEN HALF PVC GRATE	4			3"				5
FS-2	FLOOR SINK	GC	GC	SIoux CHIEF	861-3PU2	HEAVY DUTY PVC FLOOR SINK WITH ALUMINUM DOME BOTTOM STRAINER AND FULL PVC GRATE	3			3"				5
HB-1	CHEMICAL DISPENSER HOSE BIB	KES	GC	SEE ARCH	--	COMMERCIAL QUALITY HOT & COLD MIXING WALL HYDRANT. SUPPLY ARMS SHALL HAVE INTEGRAL SHUT-OFF STOP AND CHECK VALVE. FAUCET HAS FEMALE NPT INLETS.	2	1/2"	1/2"		2.25	2.25	3	
HB-2	VEGETABLE WASH HOSE BIB	KES	GC	SEE ARCH	--	SILL FAUCET WITH NPT FEMALE INLET	1	1/2"			1.5		1.5	
HS-1A	RESTROOM HAND SINK	GC	GC	AMERICAN STANDARD	9024.001TC	ADA-ACCESSIBLE, WALL-MOUNTED, PORCELAIN LAVATORY. PROVIDE ZURN Z1231 (Z1231-0 FOR BACK-TO-BACK APPLICATIONS) CONCEALED ARM CARRIER IN WALL. APPROVED ALTERNATE: KOHLER K-2064	2			2"				1
HS-1B	RESTROOM HAND SINK FAUCET	KES	GC	SEE ARCH	--	METERED FAUCET WITH 0.5 GPM AERATOR AND FURNISHED WITH THERMOSTATIC MIXING VALVE. ADJUST FAUCET FOR 30 SECOND RUN TIME.	2	1/2"	1/2"		1.5	1.5	2	
HS-2	KITCHEN HAND SINK	KES	GC	SEE ARCH	--	STAINLESS STEEL SINK WITH WALL MOUNTING BRACKET AND BACKSPASH MOUNTED FAUCET WITH SMOOTH GOOSENECK.	4	1/2"	1/2"	2"	1.5	1.5	2	1
IM-1	ICE MAKER - BIN	KES	KES	SEE ARCH	--	BACK OF HOUSE ICE MAKER WITH BIN (STANDARD CAPACITY REMOTE AIR COOLED)	1	1/2"					1	1
IM-2	ICE MAKER - SODA	KES	KES	SEE ARCH	--	SODA MACHINE-MOUNTED ICE MACHINE (INTEGRAL AIR COOLED)	1	1/2"			1		1	1
IM-3	ICE MAKER - SODA	KES	KES	SEE ARCH	--	SODA MACHINE-MOUNTED ICE MACHINE (REMOTE AIR COOLED)	1	1/2"			1		1	1
MB-1A	MOP BASIN	GC	GC	FIAT	M5B2424	PROVIDE 20"X24"X10" MOLDED-STONE MOP BASIN. INSTALL MOP BASIN IN A BED OF GROUT SO THERE ARE NO VOIDS BETWEEN THE MOP BASIN AND THE SLAB.	1			3"				2
MB-1B	MOP SINK FAUCET	KES	GC	SEE ARCH	--	SERVICE SINK FAUCET WITH BUILT-IN STOPS, LEVER HANDLES, WALL BRACE, AND NPT FEMALE INLETS	1	1/2"	1/2"		2.25	2.25	3	
PF-1	SPEED FILL FAUCET	KES	GC	SEE ARCH	--	WALL-MOUNTED POT FILLER W/ SELF-CLOSING FILLER VALVE AND NPT FEMALE INLET	1	3/8"			1.5		1.5	
RC-1	RICE COOKER	KES	GC	SEE ARCH	--		1							
RH-1	FREEZE PROOF ROOF HYDRANT	GC	GC	HOEFTNER	2131R	AUTOMATIC DRAINING, FREEZELESS ROOF HYDRANT WITH ANTI-SIPHON VACUUM BREAKER	1	3/4"			1		1	
RH-1	RICE COOKER	KES	GC	SEE ARCH	--	HOEFTNER PRODUCTS 1408 847 7813	1							
RN-1	6 BURNER RANGE	KES	GC	SEE ARCH	--		1							
SC-1	BAG-IN-BOX SODA RACK WITH CARBONATORS	SPS	SPS	SEE ARCH	--	SODA CARBONATOR(S) SHALL HAVE AN INTEGRAL ASSE 1022-RATED CARBONATED BEVERAGE BACKFLOW PREVENTION DEVICE	1	1/2"			1		1	
SK-1	THREE COMPARTMENT SINK	KES	GC	SEE ARCH	--	THREE COMPARTMENT WARE-WASHING SINK FURNISHED WITH (1) PRE-RINSE UNIT WITH ADD-ON FAUCET	1	1/2"	1/2"	3"	3	3	4	0
SK-2	PREP SINK	KES	GC	SEE ARCH	--	STAINLESS STEEL PREP TABLE WITH INTEGRAL PREP SINK. FURNISHED WITH "BIG FLO" FAUCET	1	3/4"	3/4"	2"	3	3	4	0
TD-1	TRENCH DRAIN	GC	GC	ZURN	Z886 8601 8602	6" X 160" HDPE 1/2" INCH DRAIN (CLOPED FROM 3.50" TO 4.70") WITH (2) CLOSED END CAPS, (1) 4" NO-HUB BOTTOM OUTLET, AND CLASS 4 FIBER-GLASS POLYESTER GRATES. SET DETAIL ON SHEET P700 FOR REDUCTION TO 2" DRAIN CONNECTION.	1			2"				2
TR-3	TRAP PRIMER (THREE-FOUR FLOOR BIRNS)	GC	GC	PRECISION PLUMBING PRODUCTS	P1-300 W/ DU-U	TRAP PRIMER WITH INTEGRAL VACUUM BREAKER AND DISTRIBUTION UNIT. CAP UNUSED	2	1/2"			0		0	
WC-1	WATER CLOSET	GC	GC	KOHLER	K-3519 W/ SEAT K-4666-C	WHITE ENGLINE 1.0 GPF, 17-1/8"-HIGH, ADA ACCESSIBLE, PRESSURE ASSIST WATER CLOSET WITH OPEN-FRONT SEAT. INSTALL TRIP LEVER ON THE TANK TO THE OPEN SIDE OF THE STALL (ADD-BA TO THE MODEL FOR RIGHT HAND TRIP LEVER).	2	1/2"		3"	2		2	4
WH-1	FREEZE PROOF WALL HYDRANT	GC	GC	WOODGORD	MODEL 65	AUTOMATIC DRAINING, FREEZELESS WALL HYDRANT WITH ANTI-SIPHON VACUUM BREAKER. PROVIDE WITH STEM LONG ENOUGH TO REACH INSIDE THE THERMAL ENVELOPE OF THE BUILDING.	2	3/4"			1		1	
WS-1	WATER SOFTENER	KES	GC	CUNO	CFSM1254E	POINT OF ENTRY HIGH CAPACITY WATER TREATMENT SYSTEM. PROVIDE STARTUP PER MANUFACTURER'S INSTALLATION INSTRUCTIONS.	1	1"			0		0	

**WATER HEATER SCHEDULE**

TAG	DESCRIPTION	NATURAL GAS		ELECTRICAL		FURNISHED BY	INSTALLED BY	BASIS FOR DESIGN		REMARKS
		INPUT	CONNECTION SIZE	FLA	V/P/H			MANUFACTURER	MODEL	
DWH-1	WATER HEATER (GAS TANKLESS)	199,000 Btu/h	3/4"		120/1/60	GC	GC	NAVEN	NPE-240A2	RATED FLOW RATE: 5.6 GPM @ 67°F RISE THERMAL EFFICIENCY: 90% PROVIDE WITH LEAD FREE "PLUMB EASY VALVE SET". GC SHALL PURCHASE WATER HEATER DIRECTLY THROUGH A NAVEN AUTHORIZED DISTRIBUTOR (1-800-519-8794 OR WWW.NAVEN.COM TO LOCATE AUTHORIZED DISTRIBUTOR).
DWH-2	WATER HEATER (GAS TANKLESS)	199,000 Btu/h	3/4"		120/1/60	GC	GC	NAVEN	NPE-240A2	RATED FLOW RATE: 5.6 GPM @ 67°F RISE THERMAL EFFICIENCY: 90% PROVIDE WITH LEAD FREE "PLUMB EASY VALVE SET". GC SHALL PURCHASE WATER HEATER DIRECTLY THROUGH A NAVEN AUTHORIZED DISTRIBUTOR (1-800-519-8794 OR WWW.NAVEN.COM TO LOCATE AUTHORIZED DISTRIBUTOR).

**NATIONAL**  
 4635 Trieman Blvd, Suite 250  
 Hilliard, Ohio 43026  
 Phone: (614) 751-9610  
 Fax: (614) 552-5240  
 Contact: Joe Jones  
 (614) 328-2024  
 jones@nationaleengineering.com

FOR  
 CONSTRUCTION

Copyright 2025  
 This document is an instrument of service  
 and as such remains the property of  
 CHIPOTLE MEXICAN GRILL, INC. PERMISSION FOR  
 USE OF THIS DOCUMENT IS LIMITED AND CAN BE  
 EXTENDED ONLY BY WRITTEN AGREEMENT WITH  
 CHIPOTLE MEXICAN GRILL, INC.



STORE NO.: 5584  
 GEORGETOWN & I-75  
 98 OSBORNE WAY  
 GEORGETOWN, KY 40324

Issue/Revised:  
 03/19/2025 PERMIT SET  
 07/16/2025 CONSTRUCTION SET

Drawn: \_\_\_\_\_  
 Check: \_\_\_\_\_  
 JEL: \_\_\_\_\_  
 CLK: \_\_\_\_\_

Project No.: \_\_\_\_\_  
 2402035  
 Contain: \_\_\_\_\_

PLUMBING  
 SCHEDULES

P600











VOLTS: 208/120V Wye												PANEL A											
PHASES: 3												MAINS: MCB											
WIRES: 4												AMPERAGE: 400 A											
ENCLOSURE: Type 1												MCB RATING: 400 A											
CR	#	NOTES	LOAD	LOAD	LOAD	LOAD	LOAD	LOAD	LOAD	LOAD	LOAD	CR	#	NOTES	LOAD	LOAD	LOAD	LOAD	LOAD	LOAD	LOAD		
A			(VA)	(VA)	(VA)	(VA)	(VA)	(VA)	(VA)	(VA)	(VA)	A			(VA)	(VA)	(VA)	(VA)	(VA)	(VA)	(VA)		
1												1											
1	1		4.1	2.0								1	1		4.1	2.0							
2	1	W/COMBINATION SWITCH (TYPE 1) (30A, 125V, 1P, 1C)	4.1	2.0								2	1		4.1	2.0							
3	1	W/COMBINATION SWITCH (TYPE 1) (30A, 125V, 1P, 1C)	4.1	2.0								3	1		4.1	2.0							
4	1	W/COMBINATION SWITCH (TYPE 1) (30A, 125V, 1P, 1C)	4.1	2.0								4	1		4.1	2.0							
5	1	W/COMBINATION SWITCH (TYPE 1) (30A, 125V, 1P, 1C)	4.1	2.0								5	1		4.1	2.0							
6	1	W/COMBINATION SWITCH (TYPE 1) (30A, 125V, 1P, 1C)	4.1	2.0								6	1		4.1	2.0							
7	1	W/COMBINATION SWITCH (TYPE 1) (30A, 125V, 1P, 1C)	4.1	2.0								7	1		4.1	2.0							
8	1	W/COMBINATION SWITCH (TYPE 1) (30A, 125V, 1P, 1C)	4.1	2.0								8	1		4.1	2.0							
9	1	W/COMBINATION SWITCH (TYPE 1) (30A, 125V, 1P, 1C)	4.1	2.0								9	1		4.1	2.0							
10	1	W/COMBINATION SWITCH (TYPE 1) (30A, 125V, 1P, 1C)	4.1	2.0								10	1		4.1	2.0							
11	1	W/COMBINATION SWITCH (TYPE 1) (30A, 125V, 1P, 1C)	4.1	2.0								11	1		4.1	2.0							
12	1	W/COMBINATION SWITCH (TYPE 1) (30A, 125V, 1P, 1C)	4.1	2.0								12	1		4.1	2.0							
13	1	W/COMBINATION SWITCH (TYPE 1) (30A, 125V, 1P, 1C)	4.1	2.0								13	1		4.1	2.0							
14	1	W/COMBINATION SWITCH (TYPE 1) (30A, 125V, 1P, 1C)	4.1	2.0								14	1		4.1	2.0							
15	1	W/COMBINATION SWITCH (TYPE 1) (30A, 125V, 1P, 1C)	4.1	2.0								15	1		4.1	2.0							
16	1	W/COMBINATION SWITCH (TYPE 1) (30A, 125V, 1P, 1C)	4.1	2.0								16	1		4.1	2.0							
17	1	W/COMBINATION SWITCH (TYPE 1) (30A, 125V, 1P, 1C)	4.1	2.0								17	1		4.1	2.0							
18	1	W/COMBINATION SWITCH (TYPE 1) (30A, 125V, 1P, 1C)	4.1	2.0								18	1		4.1	2.0							
19	1	W/COMBINATION SWITCH (TYPE 1) (30A, 125V, 1P, 1C)	4.1	2.0								19	1		4.1	2.0							
20	1	W/COMBINATION SWITCH (TYPE 1) (30A, 125V, 1P, 1C)	4.1	2.0								20	1		4.1	2.0							
21	1	W/COMBINATION SWITCH (TYPE 1) (30A, 125V, 1P, 1C)	4.1	2.0								21	1		4.1	2.0							
22	1	W/COMBINATION SWITCH (TYPE 1) (30A, 125V, 1P, 1C)	4.1	2.0								22	1		4.1	2.0							
23	1	W/COMBINATION SWITCH (TYPE 1) (30A, 125V, 1P, 1C)	4.1	2.0								23	1		4.1	2.0							
24	1	W/COMBINATION SWITCH (TYPE 1) (30A, 125V, 1P, 1C)	4.1	2.0								24	1		4.1	2.0							
25	1	W/COMBINATION SWITCH (TYPE 1) (30A, 125V, 1P, 1C)	4.1	2.0								25	1		4.1	2.0							
26	1	W/COMBINATION SWITCH (TYPE 1) (30A, 125V, 1P, 1C)	4.1	2.0								26	1		4.1	2.0							
27	1	W/COMBINATION SWITCH (TYPE 1) (30A, 125V, 1P, 1C)	4.1	2.0								27	1		4.1	2.0							
28	1	W/COMBINATION SWITCH (TYPE 1) (30A, 125V, 1P, 1C)	4.1	2.0								28	1		4.1	2.0							
29	1	W/COMBINATION SWITCH (TYPE 1) (30A, 125V, 1P, 1C)	4.1	2.0								29	1		4.1	2.0							
30	1	W/COMBINATION SWITCH (TYPE 1) (30A, 125V, 1P, 1C)	4.1	2.0								30	1		4.1	2.0							
31	1	W/COMBINATION SWITCH (TYPE 1) (30A, 125V, 1P, 1C)	4.1	2.0								31	1		4.1	2.0							
32	1	W/COMBINATION SWITCH (TYPE 1) (30A, 125V, 1P, 1C)	4.1	2.0								32	1		4.1	2.0							
33	1	W/COMBINATION SWITCH (TYPE 1) (30A, 125V, 1P, 1C)	4.1	2.0								33	1		4.1	2.0							
34	1	W/COMBINATION SWITCH (TYPE 1) (30A, 125V, 1P, 1C)	4.1	2.0								34	1		4.1	2.0							
35	1	W/COMBINATION SWITCH (TYPE 1) (30A, 125V, 1P, 1C)	4.1	2.0								35	1		4.1	2.0							
36	1	W/COMBINATION SWITCH (TYPE 1) (30A, 125V, 1P, 1C)	4.1	2.0								36	1		4.1	2.0							
37	1	W/COMBINATION SWITCH (TYPE 1) (30A, 125V, 1P, 1C)	4.1	2.0								37	1		4.1	2.0							
38	1	W/COMBINATION SWITCH (TYPE 1) (30A, 125V, 1P, 1C)	4.1	2.0								38	1		4.1	2.0							
39	1	W/COMBINATION SWITCH (TYPE 1) (30A, 125V, 1P, 1C)	4.1	2.0								39	1		4.1	2.0							
40	1	W/COMBINATION SWITCH (TYPE 1) (30A, 125V, 1P, 1C)	4.1	2.0								40	1		4.1	2.0							
41	1	W/COMBINATION SWITCH (TYPE 1) (30A, 125V, 1P, 1C)	4.1	2.0								41	1		4.1	2.0							
42	1	W/COMBINATION SWITCH (TYPE 1) (30A, 125V, 1P, 1C)	4.1	2.0								42	1		4.1	2.0							
43	1	W/COMBINATION SWITCH (TYPE 1) (30A, 125V, 1P, 1C)	4.1	2.0								43	1		4.1	2.0							
44	1	W/COMBINATION SWITCH (TYPE 1) (30A, 125V, 1P, 1C)	4.1	2.0								44	1		4.1	2.0							
45	1	W/COMBINATION SWITCH (TYPE 1) (30A, 125V, 1P, 1C)	4.1	2.0								45	1		4.1	2.0							
46	1	W/COMBINATION SWITCH (TYPE 1) (30A, 125V, 1P, 1C)	4.1	2.0								46	1		4.1	2.0							
47	1	W/COMBINATION SWITCH (TYPE 1) (30A, 125V, 1P, 1C)	4.1	2.0								47	1		4.1	2.0							
48	1	W/COMBINATION SWITCH (TYPE 1) (30A, 125V, 1P, 1C)	4.1	2.0								48	1		4.1	2.0							
49	1	W/COMBINATION SWITCH (TYPE 1) (30A, 125V, 1P, 1C)	4.1	2.0								49	1		4.1	2.0							
50	1	W/COMBINATION SWITCH (TYPE 1) (30A, 125V, 1P, 1C)	4.1	2.0								50	1		4.1	2.0							
51	1	W/COMBINATION SWITCH (TYPE 1) (30A, 125V, 1P, 1C)	4.1	2.0								51	1		4.1	2.0							
52	1	W/COMBINATION SWITCH (TYPE 1) (30A, 125V, 1P, 1C)	4.1	2.0								52	1		4.1	2.0							
53	1	W/COMBINATION SWITCH (TYPE 1) (30A, 125V, 1P, 1C)	4.1	2.0								53	1		4.1	2.0							
54	1	W/COMBINATION SWITCH (TYPE 1) (30A, 125V, 1P, 1C)	4.1	2.0								54	1		4.1	2.0							
55	1	W/COMBINATION SWITCH (TYPE 1) (30A, 125V, 1P, 1C)	4.1	2.0								55	1		4.1	2.0							
56	1	W/COMBINATION SWITCH (TYPE 1) (30A, 125V, 1P, 1C)	4.1	2.0								56	1		4.1	2.0							
57	1	W/COMBINATION SWITCH (TYPE 1) (30A, 125V, 1P, 1C)	4.1	2.0								57	1		4.1	2.0							
58	1	W/COMBINATION SWITCH (TYPE 1) (30A, 125V, 1P, 1C)	4.1	2.0								58	1		4.1	2.0							
59	1	W/COMBINATION SWITCH (TYPE 1) (30A, 125V, 1P, 1C)	4.1	2.0								59	1		4.1	2.0							
60	1	W/COMBINATION SWITCH (TYPE 1) (30A, 125V, 1P, 1C)	4.1	2.0								60	1		4.1	2.0							
PHASE TOTAL (kVA):			46.2	24.1	46.3	PHASE TOTAL (AMPS):			387	376	387												
TYPE			DESCRIPTION			CONNECTED LOAD			DEMAND FACTOR			ESTIMATED DEMAND			PANEL TOTALS								
A	INTERIOR LIGHTING			2	kVA			125	0.8%			2	kVA			TOTAL CONNECTED kVA: 138 kVA							
B	EXTERIOR LIGHTING			1	kVA			125	0.0%			1	kVA			TOTAL CONNECTED kVA: 382 A							
C	COOLING/COOLING			37	kVA			100	0.0%			37	kVA			TOTAL ESTIMATED kVA: 208.6 kVA							
D	COMFORT HEATING			2	kVA			100	0.0%			2	kVA			TOTAL ESTIMATED AMPS: 301 A							
E	MISC. MOTOR			5	kVA			100	0.0%			5	kVA										
F	KITCHEN EQUIPMENT			85	kVA			65	0.0%			85	kVA										
G	RECEPTACLES			7	kVA			100	0.0%			7	kVA										

VOLTS: 208/120V Wye												PANEL B											
PHASES: 3												MAINS: LUGS											
WIRES: 4												AMPERAGE: 400 A											
ENCLOSURE: Type 1												MCB RATING: 0 A											
CR	#	NOTES	LOAD	LOAD	LOAD	LOAD	LOAD	LOAD	LOAD	LOAD	LOAD	CR	#	NOTES	LOAD	LOAD	LOAD	LOAD	LOAD	LOAD	LOAD		
A			(VA)	(VA)	(VA)	(VA)	(VA)	(VA)	(VA)	(VA)	(VA)	A			(VA)	(VA)	(VA)	(VA)	(VA)	(VA)	(VA)		

