

Chick-fil-A

Chick-fil-A
5200 Buffington Road
Atlanta, Georgia
30349-2998

INTERPLAN
INTERPLAN LLC
AR0011595
CA 8660

ARCHITECTURE
ENGINEERING
PERMITTING

220 E. CENTRAL PKWY, STE 4000
ALAMONTE SPRINGS, FL 32701
407.645.5038

SEAL:

THIS DOCUMENT IS NOT
FOR REGULATORY
APPROVAL, PERMITTING,
OR CONSTRUCTION.

CHICK-FIL-A
MADISON STREET
1626 Madison St.
Clarksville
TN, 37043

FSR#01673

BUILDING TYPE / SIZE: S04-152

RELEASE:

PRINTED FOR:

BID FOR CONSTRUCTION

REVISION SCHEDULE

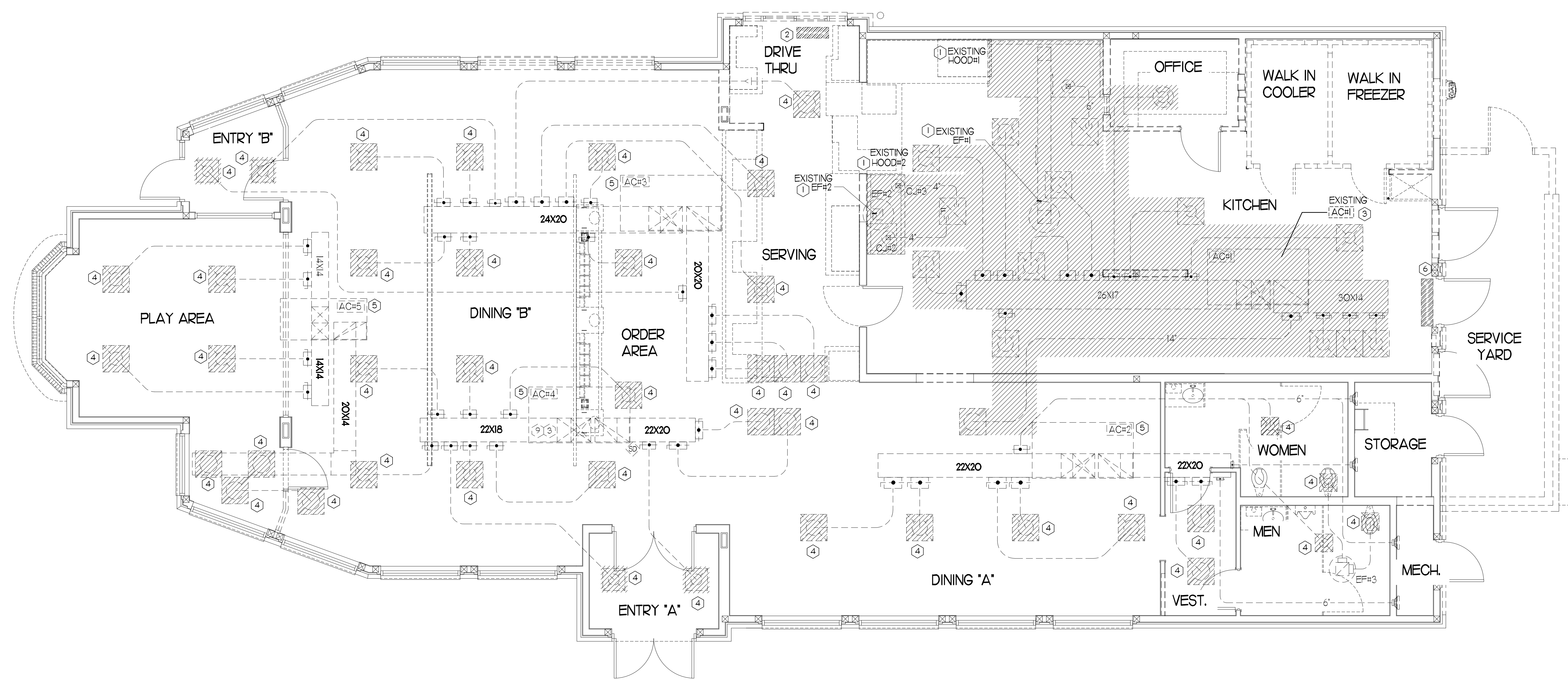
NO.	DATE	DESCRIPTION

CONSULTANT PROJECT # 2020.0755
DATE March 2022
DRAWN BY JR

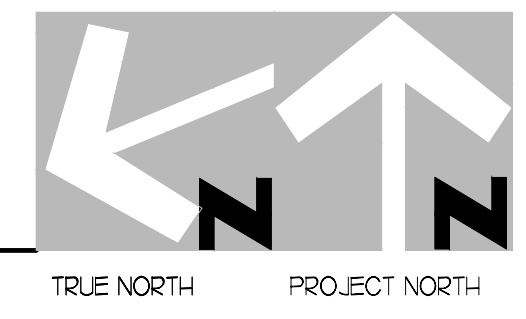
CHECKED BY DAK
Information contained on this drawing and all digital files produced for above named project may not be reproduced or modified without express written or verbal consent from the project design team.

SHEET MECHANICAL DEMO PLAN

SHEET NUMBER
M1.0



MECHANICAL DEMOLITION PLAN
1/4" = 1'-0"



DEMOLITION LEGEND

	EXISTING EQUIPMENT, DUCT, AIR DEVICES ETC. TO REMAIN INTACT.
	EXISTING EQUIPMENT, DUCT, AIR DEVICES ETC. TO BE DEMOLISHED.

LEGEND

A-12-400	TYPE - NECK SIZE - CFM	[EF#]	EXHAUST FAN # (TYP)
	SPIN-IN FITTING WITH MANUAL BALANCING DAMPER, WITHOUT SCOOP	[ACH#]	AIR CONDITIONING UNIT # (TYP)
	SPIN-IN HARD O FLEXIBLE O DIFFUSER		RETURN/EXHAUST (TYP)
	EXISTING EQUIPMENT, DUCT, & AIR DEVICE		SUPPLY DIFFUSER, SQ FACE (TYP)
	NEW EQUIPMENT, DUCT, & AIR DEVICE	①	PLAN NOTE REFERENCE
	REMOTE TEMPERATURE SENSOR		MANUAL VOLUME DAMPER
	HUMIDITY SENSOR		DIRECTION OF THROW ON DIFFUSER
	STROBE AUDIO/VISUAL ALARM-ANNUNCIATOR		CO2 SENSOR
	DUCT SIZE (REVERSE FOR ELEVATION VIEWS)		PULL STATION
	POINT OF DISCONNECTION		CONTROL PANEL
	POINT OF CONNECTION		SMOKE DETECTOR
	INDICATES 2-WAY DIFFUSER. INDICATES BLANKED OFF SIDE		

DEMOLITION NOTES

- CONTRACTOR IS RESPONSIBLE FOR OBTAINING ALL NECESSARY PERMITS AND PAYING ALL APPLICABLE FEES.
- DISPOSAL OF EQUIPMENT AND MATERIALS REQUIRED TO BE REMOVED SHALL BE THE RESPONSIBILITY OF THE CONTRACTOR PERFORMING THE WORK.
- DE-ENERGIZE ALL ELECTRICAL CIRCUITS RELATED TO EQUIPMENT THAT WILL BE MOVED OR REMOVE PRIOR TO STARTING WORK. DE-ENERGIZE CIRCUITS SHALL BE PROTECTED WITH LOCKING DEVICES USING APPROPRIATE WARNING LABELS.
- MECHANICAL CONTRACTOR SHALL BE RESPONSIBLE FOR PATCHING ROOF AFTER REMOVAL OF EXISTING MECHANICAL EQUIPMENT. SEE ARCHITECTURAL DRAWINGS FOR ROOF PATCHING REQUIREMENTS.
- EXCEPT WHERE NOTED, EXISTING REMOTE TEMPERATURE AND/OR HUMIDITY SENSORS TO REMAIN. IF DURING RENOVATION PURPOSES CONTROLS SHALL BE TAKEN DOWN. MECHANICAL CONTRACTOR SHALL BE RESPONSIBLE FOR REINSTALLING AND TO PROVIDE ANY ADDITIONAL WIRING NEEDED.
- MECHANICAL CONTRACTOR SHALL PERFORM ROUTINE MAINTENANCE ON EXISTING ROOFTOP UNITS AND MAKE ANY NECESSARY REFRIGERANT WITH NO LEAKS, NEW BELTS AND REPLACE AND FAN MOTORS NECESSARY.
- DISCONNECT GAS PIPING FROM EXISTING ROOFTOP UNITS) TO BE REPLACED. PLUMBING CONTRACTOR WILL REMOVE EXISTING GAS PIPING TO BE DEMOLISHED.
- CONTRACTOR SHALL INDICATE SALVAGE VALUE IN BID FOR ROOFTOP UNITS BEING REPLACED.

DEMOLITION KEY NOTES

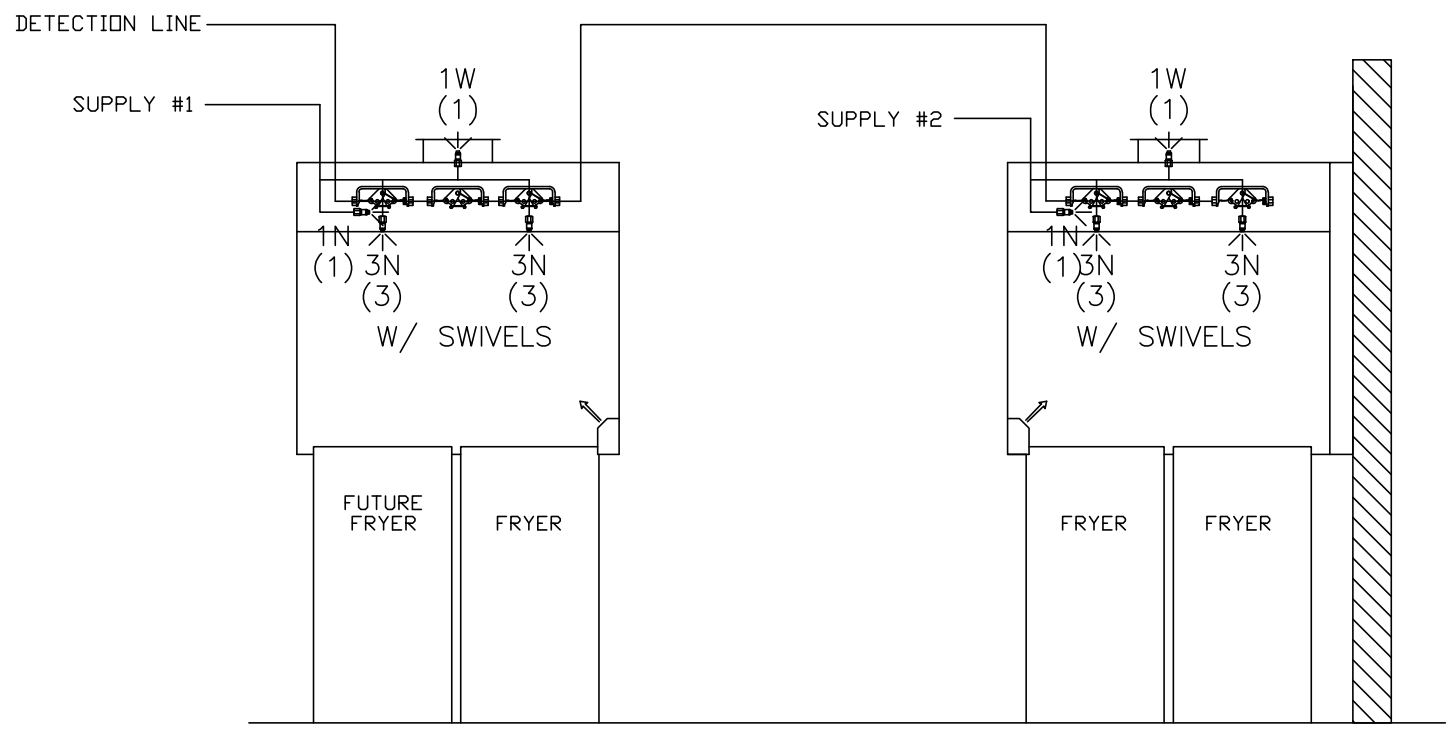
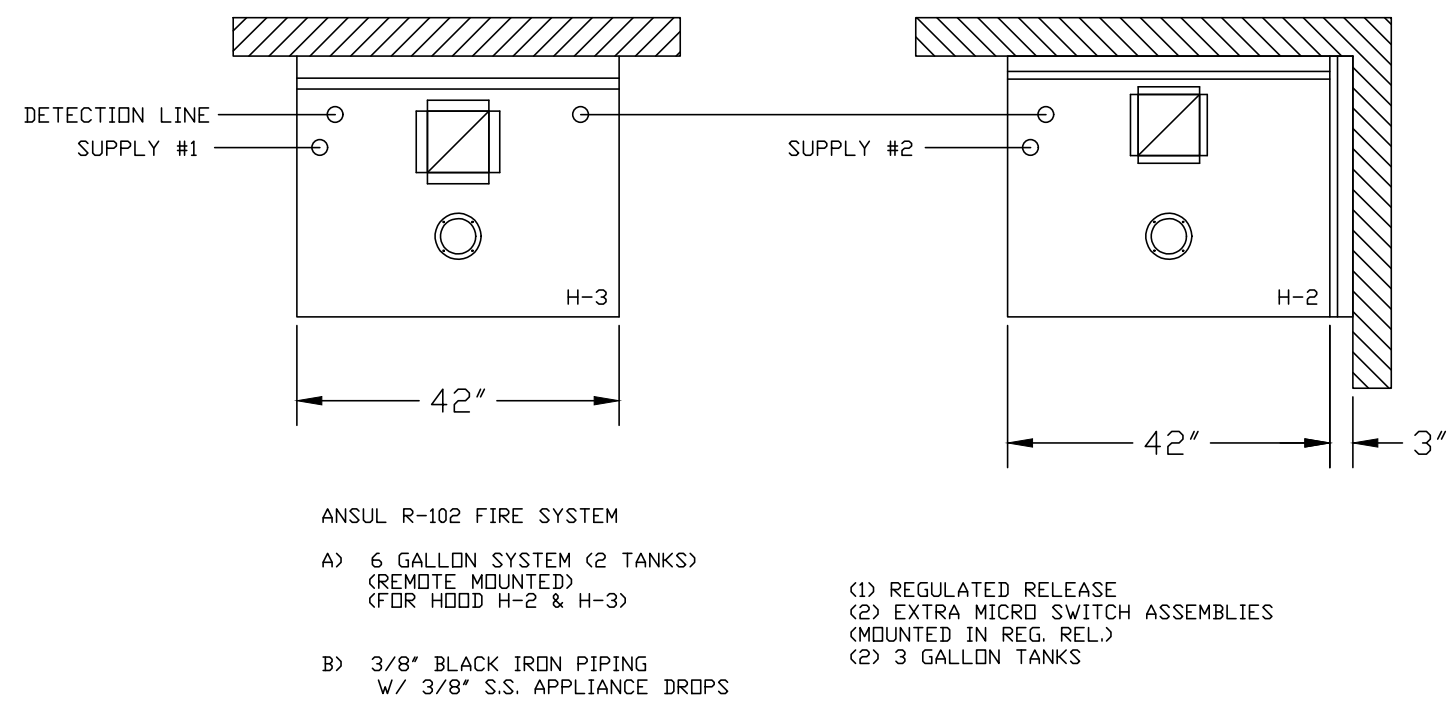
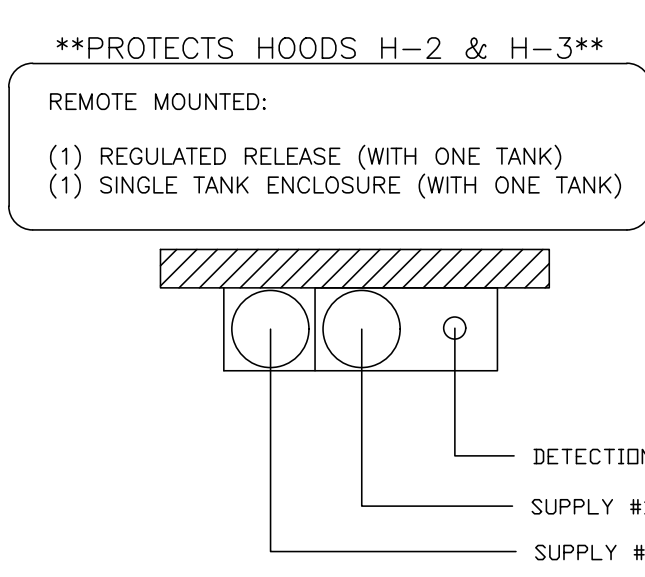
- DEMOLISH EXISTING KITCHEN HOOD, ALL ASSOCIATED GREASE DUCT, AND EXHAUST FAN ON ROOF. EXISTING EXHAUST FAN TO BE REPLACED, TURN OVER EXISTING EXHAUST FAN TO OWNER. COVER ROOF OPENING WEATHER-TIGHT FOR RE-USE. REFER TO SHEET MJI & M3I FOR FURTHER INFORMATION.
- EXISTING AIR CURTAIN TO BE REPLACED WITH NEW ADH1. REFER TO MJI AND M3I.
- DEMOLISH EXISTING KITCHEN A/C UNIT AND, SUPPLY/RETURN AIR DROPS, ALL ASSOCIATED SUPPLY/RETURN DUCT (UNLESS OTHERWISE NOTED), AIR DEVICES AND TEMPERATURE SENSOR, CAP, SEAL AND COVER EXISTING ROOF CURB WEATHER-TIGHT, DISCONNECT GAS, ELECTRICAL, AND UNIT CONTROLS FROM EXISTING ROOFTOP UNIT. EXISTING ROOFTOP UNIT TO BE REPLACED WITH NEW AS SCHEDULED ON SHEET M3I. SEE SHEETS MJI AND M3I FOR FURTHER INFORMATION.
- DETACH AND DEMOLISH EXISTING AIR DEVICE SEE SHEET MJI FOR NEW AIR DEVICE LOCATIONS.
- EXISTING ELECTRIC COOLING/GAS HEATING ROOFTOP HVAC UNIT AND ASSOCIATED TEMPERATURE SENSOR TO REMAIN. REFER TO SHEET M3I FOR FURTHER INFORMATION.
- EXISTING AIR CURTAIN TO BE RELOCATED. REFER TO MJI AND M3I.

FIELD VERIFY ALL CONDITIONS

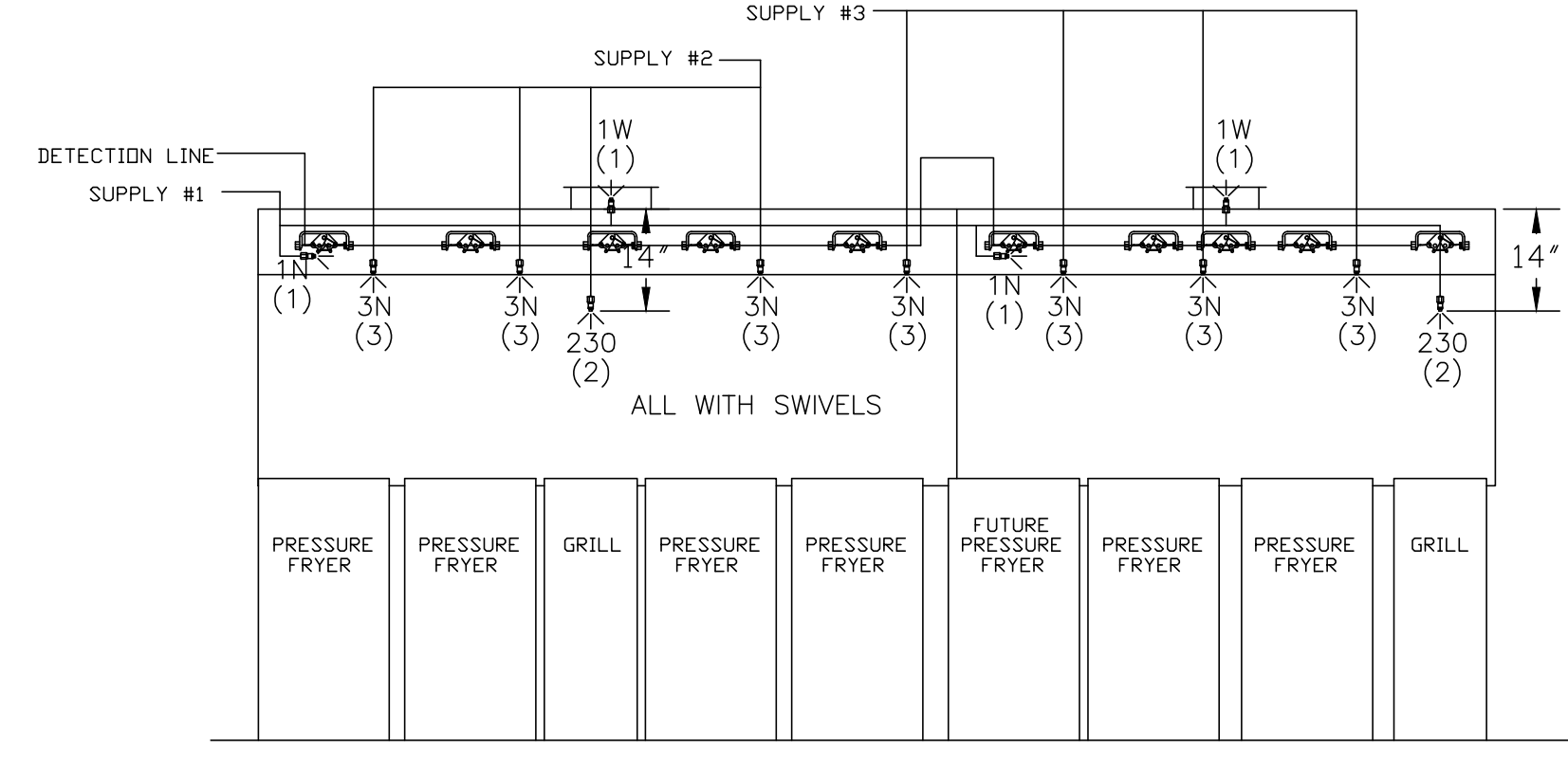
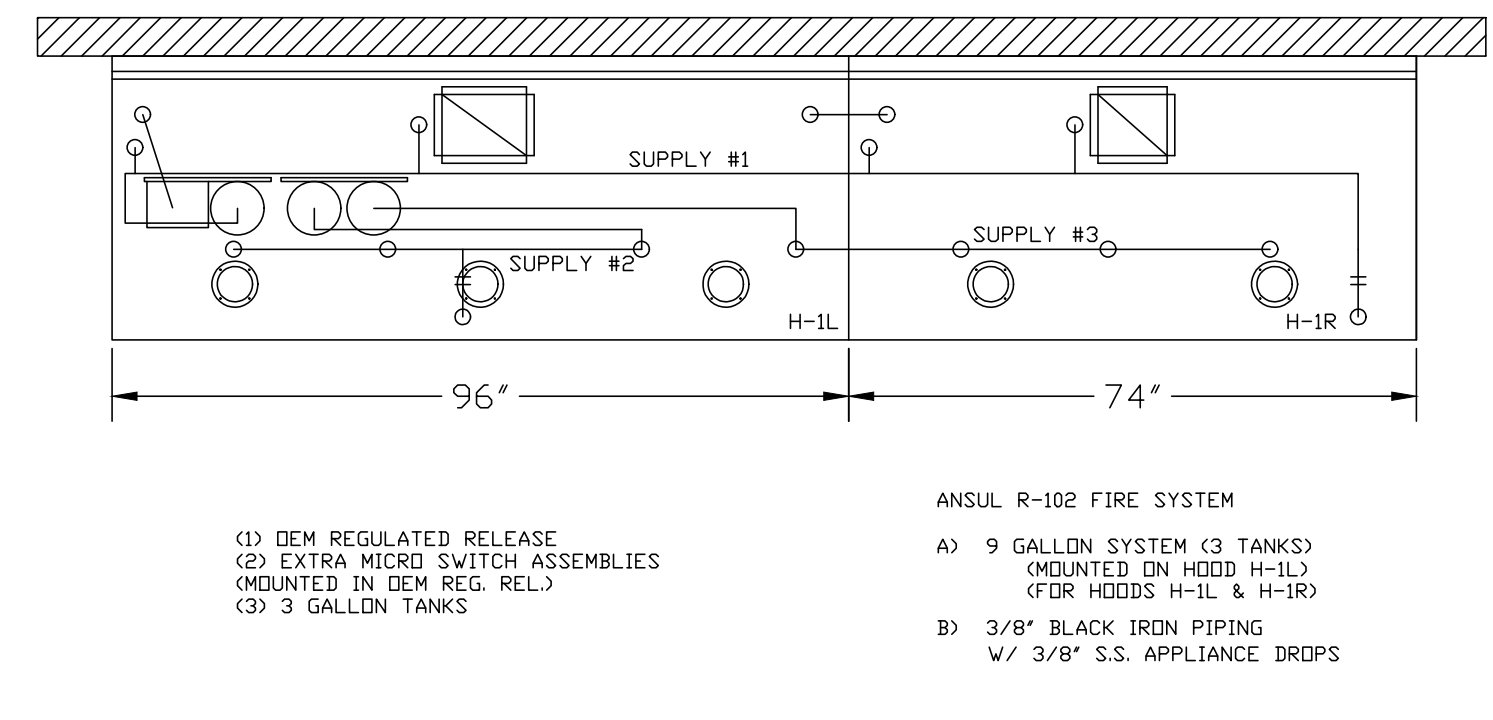
NOTE: AS NOTED IN THE SPECIFICATIONS, ALL WIRING LAYOUTS, PIPING LAYOUTS AND DUCT LAYOUTS ARE SCHEMATIC. EXACT LOCATIONS SHALL BE DETERMINED BY THE CONTRACTOR AND STRUCTURE OF THE BUILDING AND SHALL BE VERIFIED AND COORDINATED IN THE FIELD. EACH TRADE CONTRACTOR SHALL VERIFY WITH THE GENERAL CONTRACTOR THAT HE HAS THOROUGHLY REVIEWED AND COORDINATED ALL LOCATIONS AND ROUTINGS WITH ALL OTHER TRADES PRIOR TO FABRICATION OF CONDUITS, DUCTS, OR PIPING, AND START OF INSTALLATION OF SAME (INCLUDING SPRINKLER PIPING WHEN PRESENT ON JOB). ANY INSTALLATION OR CONSTRUCTION CONFLICTS WHICH OCCUR IN THE FIELD SHALL BE RESOLVED BY THE TRADE CONTRACTOR TO THE SATISFACTION OF THE OWNER AND ARCHITECT AND AT NO EXPENSE TO THE OWNER, ARCHITECT AND/OR GENERAL CONTRACTOR.

THE CONTRACTOR SHALL CONTACT THE ARCHITECT, ENGINEER OR OWNER PRIOR TO BIDDING FOR INTERPRETATIONS AND CLARIFICATIONS OF THE DESIGN AND INCLUDE IN HIS BID ALL COSTS TO MEET THE DESIGN INTENT, CLARIFICATIONS MADE BY THE ARCHITECT, ENGINEER OR OWNER AFTER BIDDING WILL BE FINAL AND SHALL BE IMPLEMENTED AT CONTRACTORS COST.

BIDDING CONTRACTORS SHALL HAVE A WORKING KNOWLEDGE OF LOCAL CODES AND ORDINANCES AND SHALL INCLUDE IN THEIR BIDS THE COSTS FOR ALL WORK INSTALLED IN STRICT ACCORDANCE WITH GOVERNING CODES, THE PLANS AND SPECIFICATIONS NOT WITHSTANDING. THE CONTRACTOR SHALL ALERT ARCHITECT, ENGINEER OR OWNER OF ANY APPARENT DISCREPANCIES BETWEEN GOVERNING CODES AND DESIGN INTENT.



ANSUL R-102 FIRE SYSTEM LAYOUT



ANSUL R-102 FIRE SYSTEM LAYOUT

FUSIBLE LINK RATINGS

ITEM	TEMP
OPEN FRYERS	450°
2 BURNER / FLAT TOP	450°
PRESSURE FRYERS	450°
GRILL	450°
EXHAUST COLLARS	450°

ANSUL R-102 FIRE SYSTEM NOTES
 THREE TANK SYSTEM MOUNTED ON TOP OF (H-1L)
 MAXIMUM FLOW POINTS = 33

ANSUL R-102 FIRE SYSTEM NOTES
 TWO TANK SYSTEM REMOTE MOUNTED
 MAXIMUM FLOW POINTS = 22

ITEM #	QTY	DESCRIPTION	FLOW PTS (TOTAL)
1W	4	DUCT NOZZLES	4
1N	4	PLENUM NOZZLES	4
230	2	APPLIANCE NOZZLES	4
3N	11	APPLIANCE NOZZLES	33
TOTAL FLOW POINTS - 45			

ITEM #	QTY	DESCRIPTION
#200	14	SERIES DETECTORS W/ FUSIBLE LINKS
#201	2	TERMINAL DETECTOR W/ FUSIBLE LINKS
#202	1	DEM REGULATED RELEASE
#202	1	W/ DOUBLE POLE MICRO SWITCH
#203	5	REGULATED RELEASE
#203	5	W/ DOUBLE POLE MICRO SWITCH
#204	1	3 GALLON TANKS
#205	2	SINGLE TANK ENCLOSURE
#205	2	REMOTE PULL STATION

ANSUL R-102 FIRE SYSTEM
 UL LISTED PER STD LATEST STD 300

- FINAL INSTALLATION IS TO BE MADE IN ACCORDANCE WITH ALL APPLICABLE CODES
- ALL ELECTRICAL COMPONENTS FOR EQUIPMENT SHUT DOWN TO BE PROVIDED BY THE ELECTRICIAN. MICRO-SWITCH INSTALLED IN REGULATED RELEASE BY ANSUL INSTALLER
- REMOTE PULL STATION LOCATED PER MECHANICAL DRAWINGS

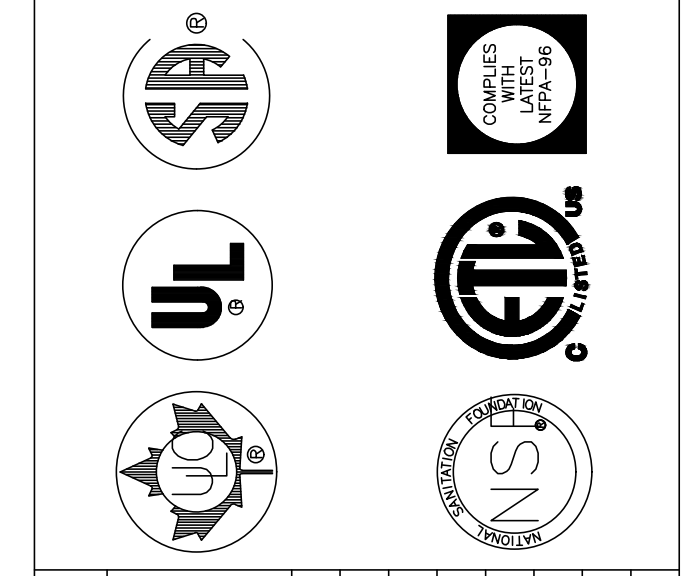
THIS DRAWING MUST BE CHECKED, SIGNED AND RETURNED TO THE APPROPRIATE FACTORY. PLEASE VERIFYING THE FOLLOWING:

- ALL DIMENSIONAL INFORMATION, MOUNTING POSITIONS
- THE LOCATION AND TYPE OF COOKING EQUIPMENT.

NOTE TO APPROVER
 ANY CHANGES IN COOKING EQUIPMENT SUCH AS INCREASED ENERGY INPUTS OR EQUIPMENT POSITION MAY AFFECT EXHAUST AIRFLOW. HALTON MUST BE NOTIFIED IF ANY OF THESE CHANGES OCCUR. A RECALCULATION EXHAUST AIRFLOW MAY BE REQUIRED.

REVERSE AND RESUBMIT
 APPROVED FOR FABRICATION
 WITH NO CHANGES
 WITH CHANGES AS NOTED

APPROVED BY _____ DATE _____



MAIL APPROVED DRAWINGS TO APPROPRIATE FACTORY BELOW: WEBSITE: WWW.HALTONCOMPANY.COM

HALTON CO. (USA) 101 INDUSTRIAL DRIVE SCOTSDALE, AZ 85164 1-270-237-8600	DATE	BY
HALTON CO. (CANADA) 1021 BREVIK PLACE MISSISSAUGA, ON L4W 3R7 1-905-624-0301	REVISION	DESCRIPTION
REV. 1	1	
REV. 2	2	
REV. 3	3	
REV. 4	4	
REV. 5	5	
REV. 6	6	
REV. 7	7	

PROJECT: CHICK-FIL-A #1673
 MADISON STREET FSU
 LOCATION: CLARKSVILLE, TN
 DRAWN BY: AF DATE: 04.27.22
 SCALE: NTS
 Halton Dwg: U22-335-02

Halton
 CARE FOR INDOOR AIR

Sheet H-1.2



INTERPLAN
 INTERPLAN LLC
 AR0011595
 CA 8660

ARCHITECTURE
 ENGINEERING
 PERMITTING

220 E. CENTRAL PKWY, STE 4000
 ALTAMONTE SPRINGS, FL 32701
 407.645.5038

SEAL: _____

THIS DOCUMENT IS NOT FOR REGULATORY APPROVAL, PERMITTING, OR CONSTRUCTION.

FOR INFORMATION ONLY

CHICK-FIL-A
 MADISON STREET
 1626 Madison St.
 Clarksville
 TN, 37043

FSR#01673

BUILDING TYPE / SIZE: S04-152

RELEASED FOR: PRINTED FOR

BID FOR CONSTRUCTION

REVISION SCHEDULE

NO.	DATE	DESCRIPTION

CONSULTANT PROJECT # 2020.0755
 DATE March 2022
 DRAWN BY JR
 CHECKED BY DAK

Information contained on this drawing and all digital files produced for above named project may not be reproduced or transmitted in any form or by any means, electronic, mechanical, photocopying, recording, or by any information storage and retrieval system, without the prior written permission of the project architect.

HOOD DETAILS

SHEET NUMBER
MH1.2